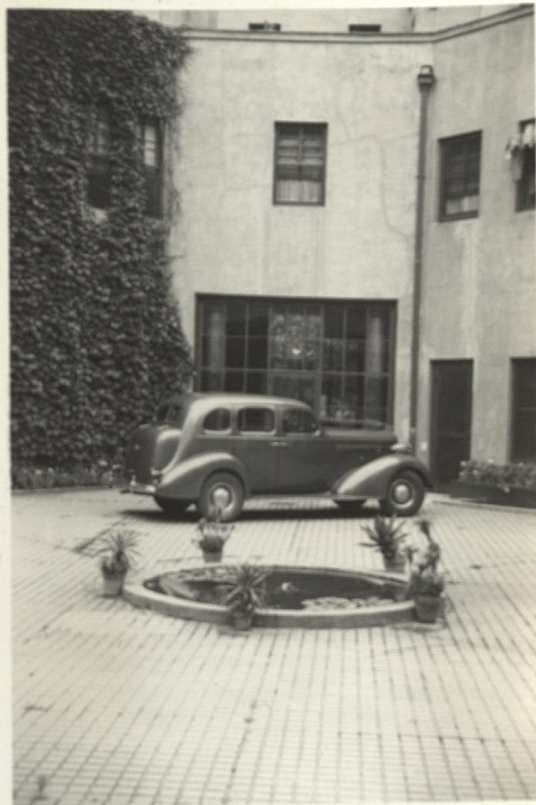




Entry to court yard of studio.

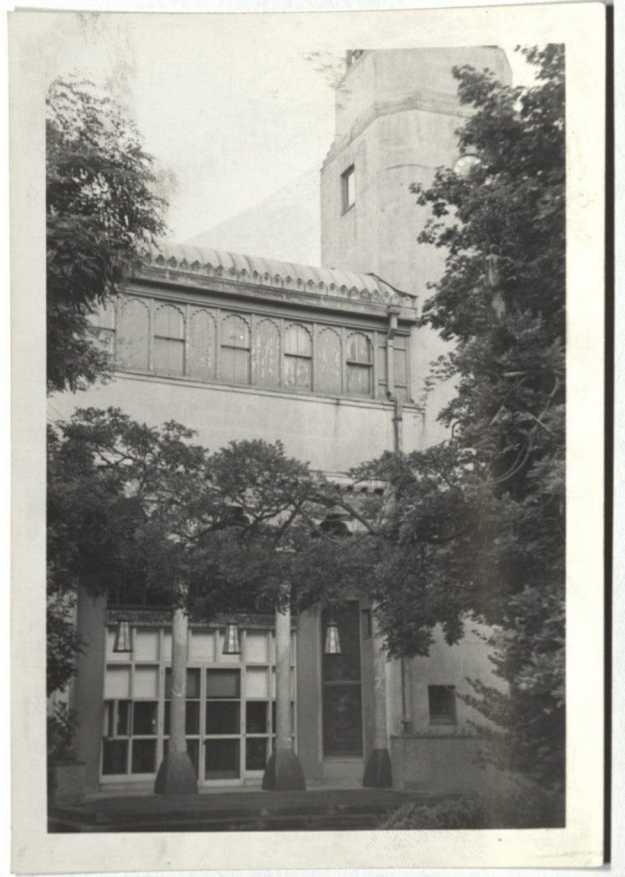


Studio court yard.
Office door at right.
Exhibition room beyond
auto.

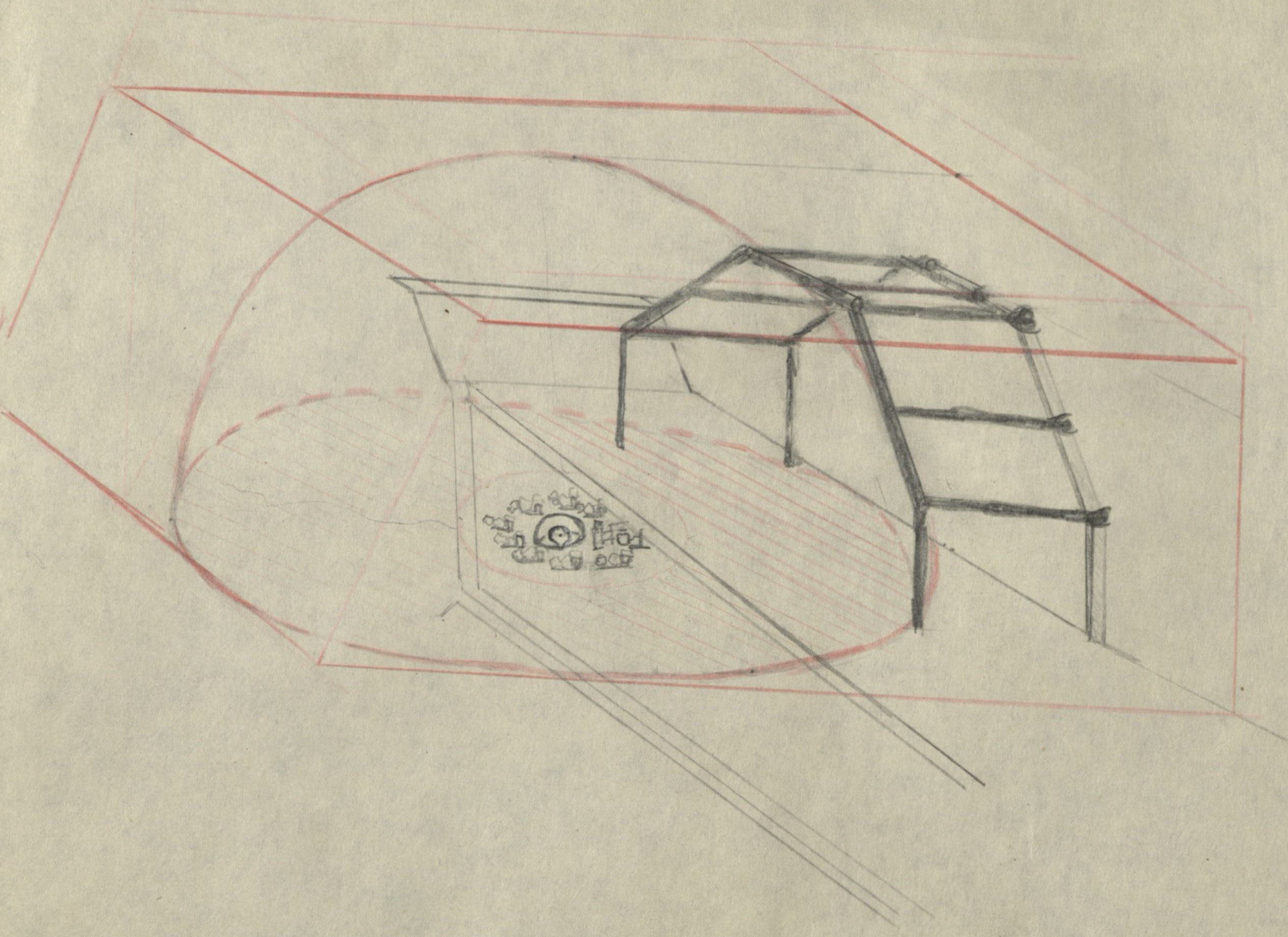


Studio as seen
from across the
pond in the main
lawn.



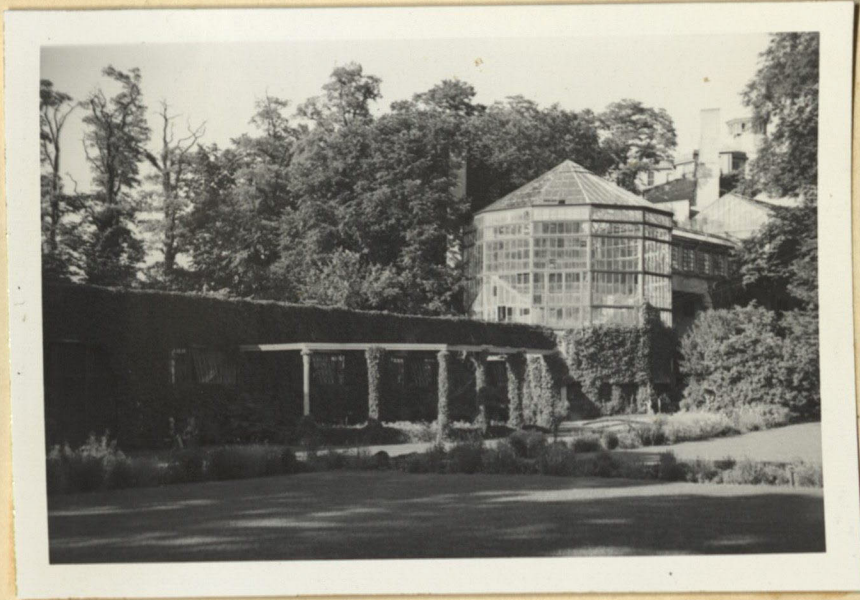






Gardens and lawn
behind the studio.

(Looking south)

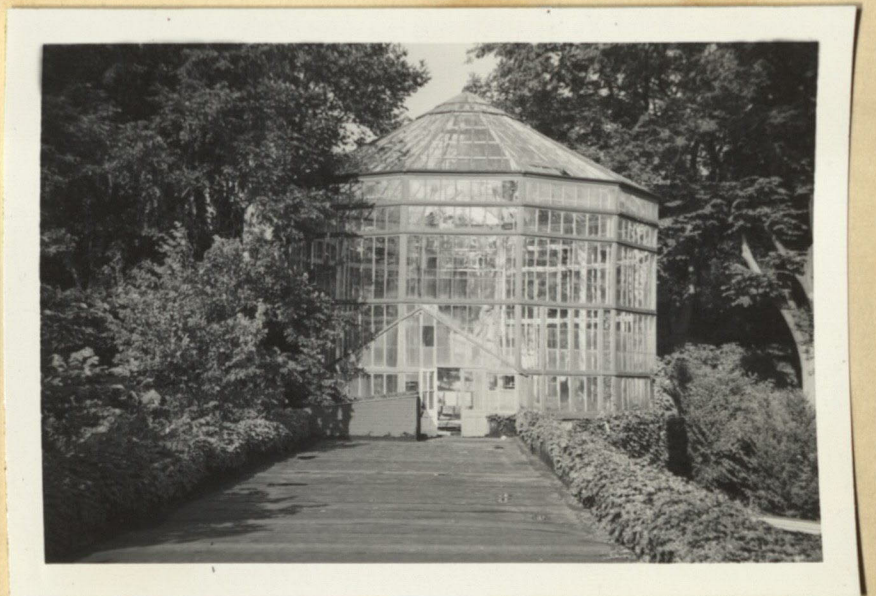


Model shop and
conservatory
connecting the studio
with the big house.

(Looking north-east)

Roof of model shop.
Main conservatory.

(Looking east)





Drive approaching
big house.

(Looking south-east)

Big house as seen
from the front beach.
Power house chimney
at left.

(Looking south-west)

Part of main lawn
as seen from cactus
garden.

(looking north)



Main house as seen
from the cactus
garden.

(Looking south.)



Cold Spring Harbor
as seen from the
terrace of the
main house.

(Looking north-east.)

Gardens



Side beach.
Bath house & Power
house.
(Looking south.)



Power house and
main house as seen
from the beach.
(Looking south-west)

Yacht anchorage
and oil storage
tanks across
Cold Spring Harbor
from side beach.

(Looking south-east)



Long Island Sound
at the end of
Cold Spring Harbor
as seen from the
bath house.

(Looking north.)



Long Island Sound
at the end of
Cold Spring Harbor
as seen from the
power house.

(Looking north.)

Cold Spring Harbor
as seen from the
north end of the
retaining wall.

(Looking north.)

