

Slide images from the **Walter Munk Papers. SMC 17. Special Collections & Archives, UC San Diego.**

Slide groupings were determined by the original order of Walter Munk's slide collection, and a corresponding inventory. Titles and descriptions were transcribed from Munk's labels and the inventory, with some editing for consistency and clarity.

Joint Oceanographic Assembly (JOA), Edinburgh, 1976

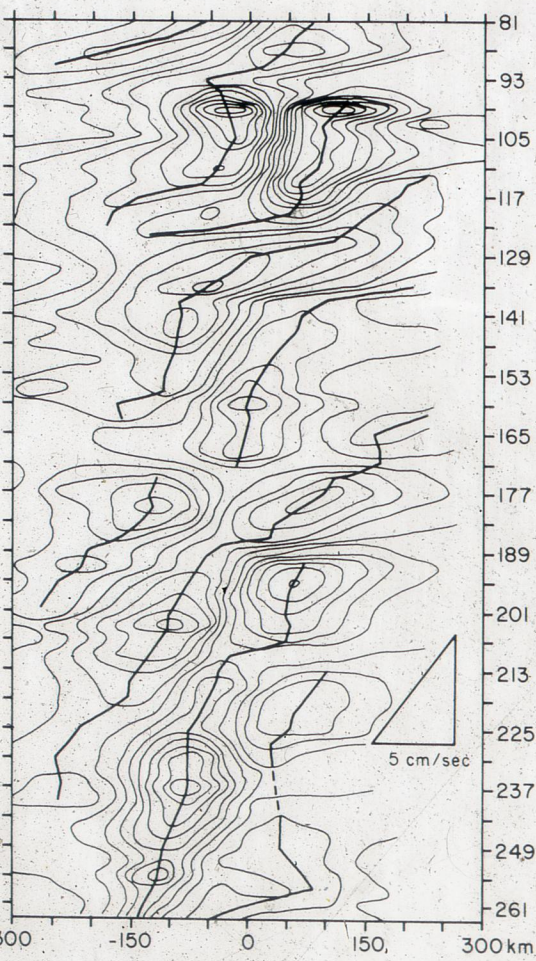
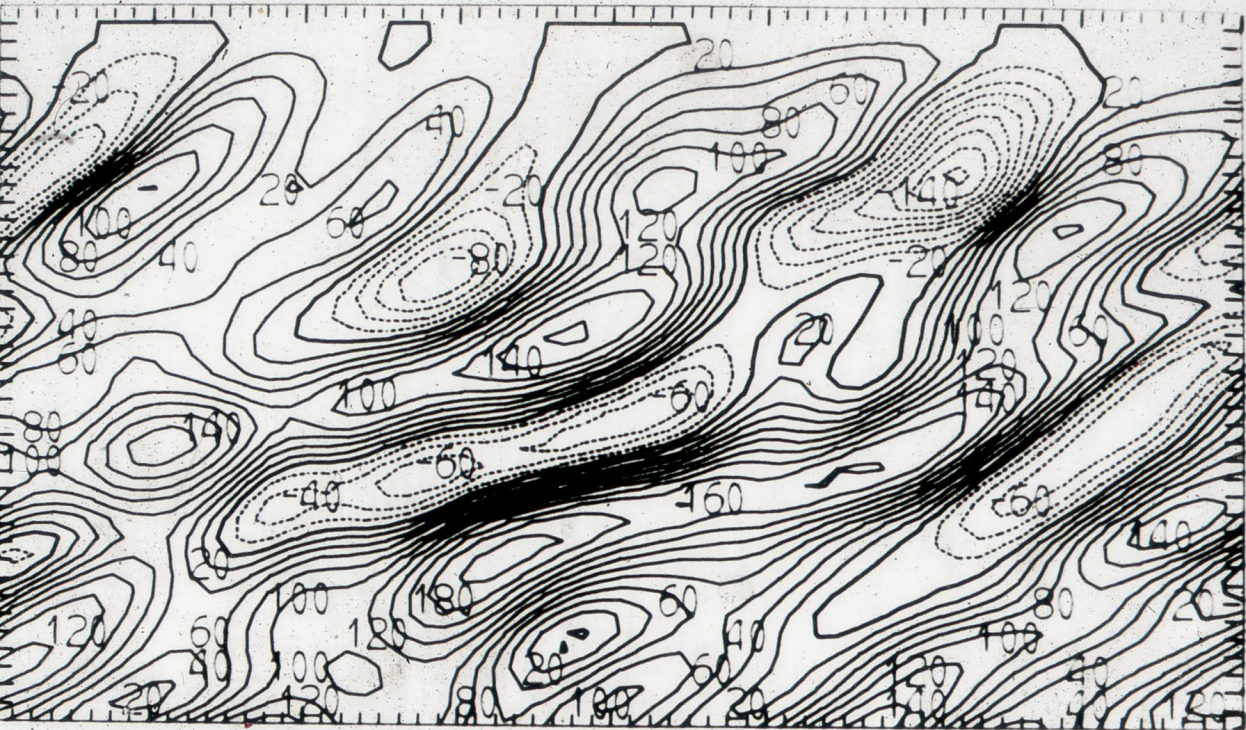
1. Major features of the surface circulation of the oceans (after McLellan), 1965
2. Depth chart, 1973
3. Depth chart, 1973 April-June
4. Isotherms and current vectors - Graph, 1973 April
5. Data table
6. Currents and eddies - Chart
7. Cloud formations - Aerial photograph
8. Current vectors - Graph, 1970 May
9. Abundance of dominant Euphausiids - Graph
10. Transmitter and receiver locations - Diagram
11. Gulf Stream infrared (IR) data, 1974 April 28
12. East Coast of United States - Chart
13. Temperature Section, Nova Scotia-Bermuda - Graph, 1932 August 14-20
14. Temperature Section, Nova Scotia-Bermuda - Graph, 1931 November 21-26
15. East Coast of United States - Data and diagram, 1973 March 16-July 9

Copyright: Dr. Munk transferred rights to his works represented in his collection to the UC Regents. Slides documenting work by others may have an unknown copyright status.

Use: This work is available from the UC San Diego Library. This digital copy of the work is intended to support research, teaching, and private study. Constraints: This work is protected by the U.S. Copyright Law (Title 17, U.S.C.). Use of this work beyond that allowed by "fair use" requires written permission of the UC Regents. Permission may be obtained from the UC San Diego Library program having custody of the work (<https://library.ucsd.edu/research-and-collections/collections/special-collections-and-archives/index.html>). Responsibility for obtaining permissions and any use and distribution of this work rests exclusively with the user and not the UC San Diego Library.



Figure 1. Major features of the surface circulation of the oceans. (After McLellan, 1965)



Day Number of 1973

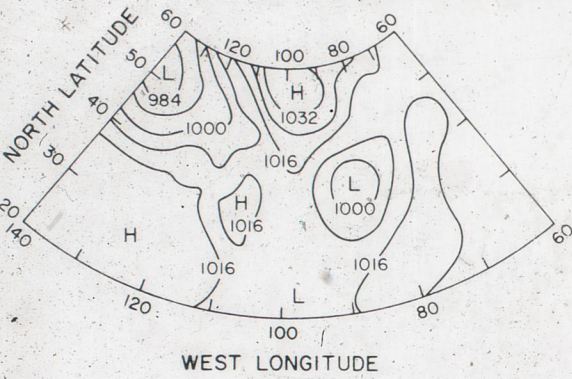
5 cm/sec

Distance East of Central Site Mooring

C.I. = 8 mb

1600 km

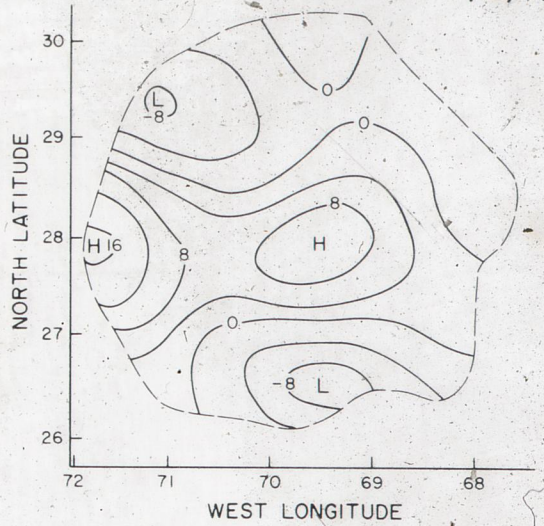
7 p.m. EST 12/13/73



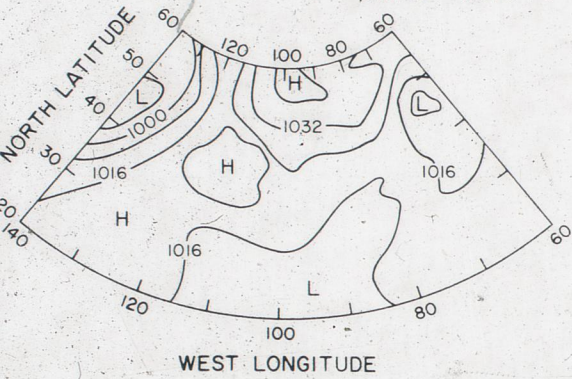
C.I. = 4 mb

100 km

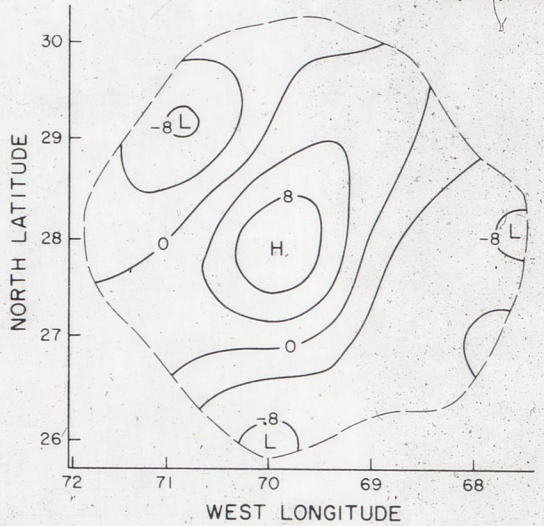
4/15/73



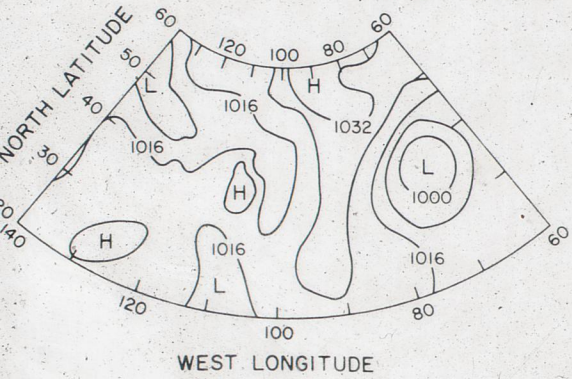
7 p.m. EST 12/15/73



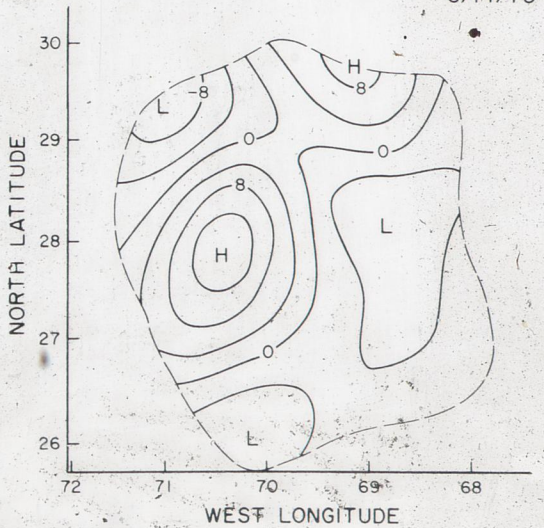
5/15/73

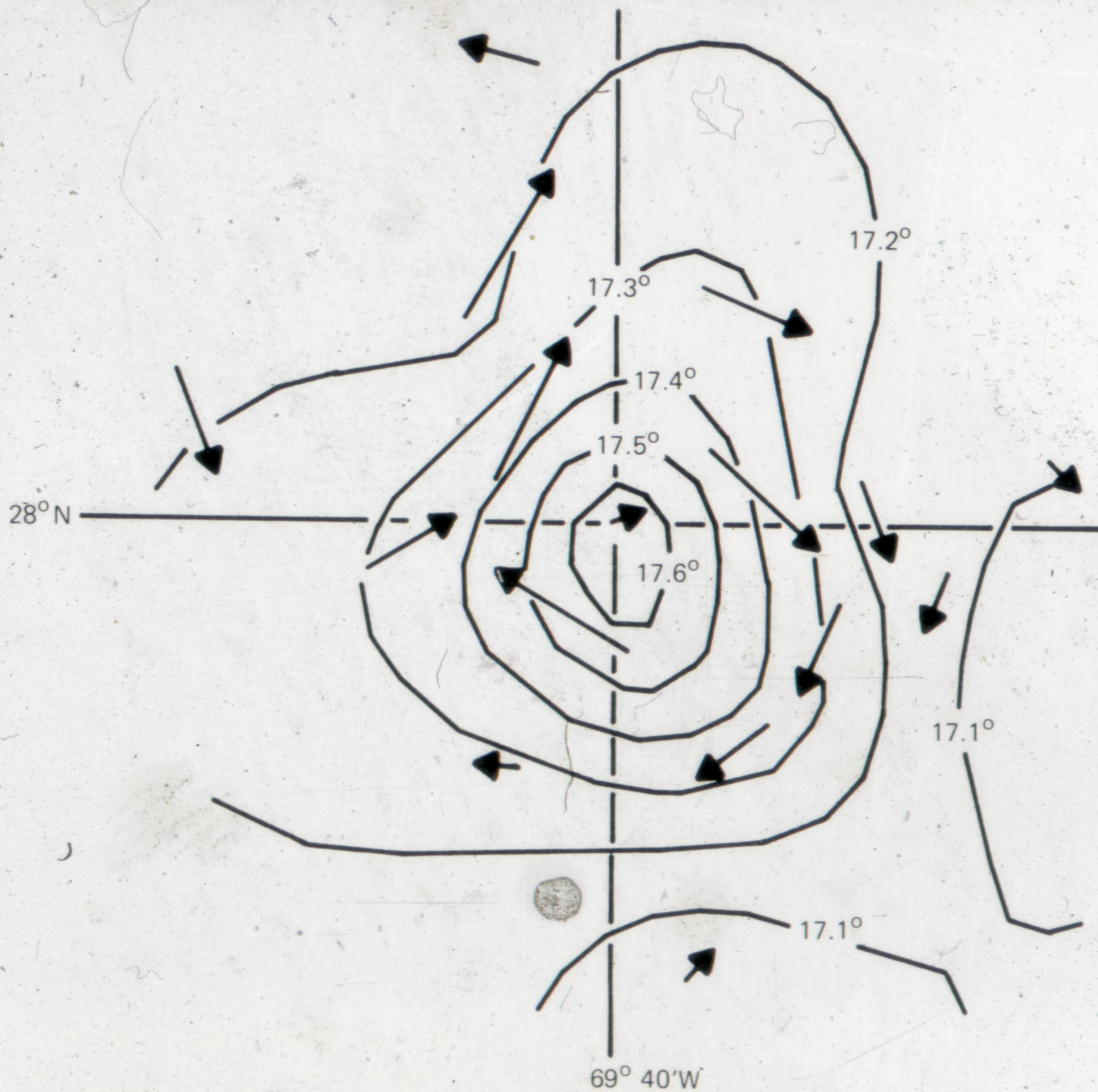


7 p.m. EST 12/17/73



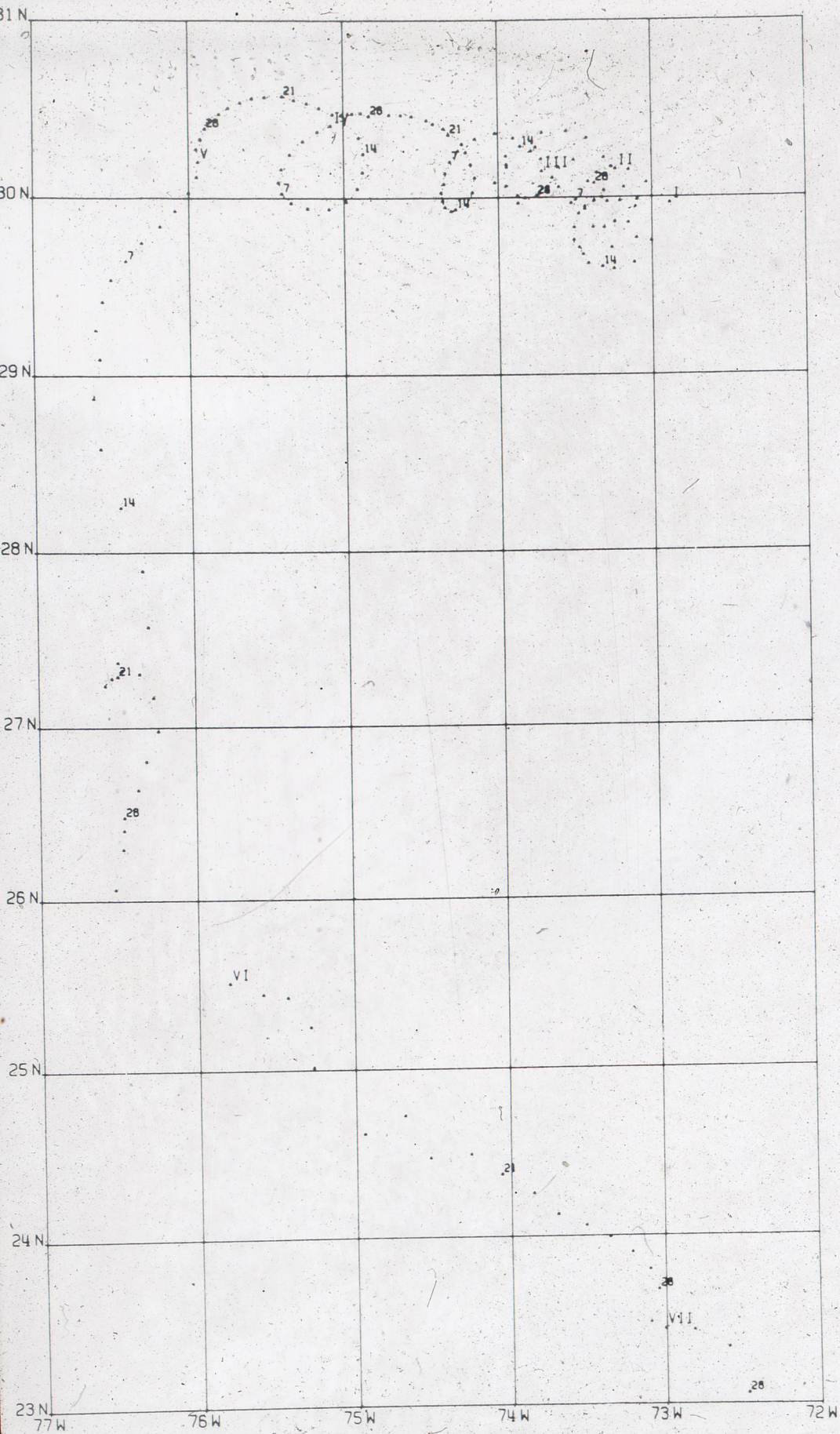
6/14/73

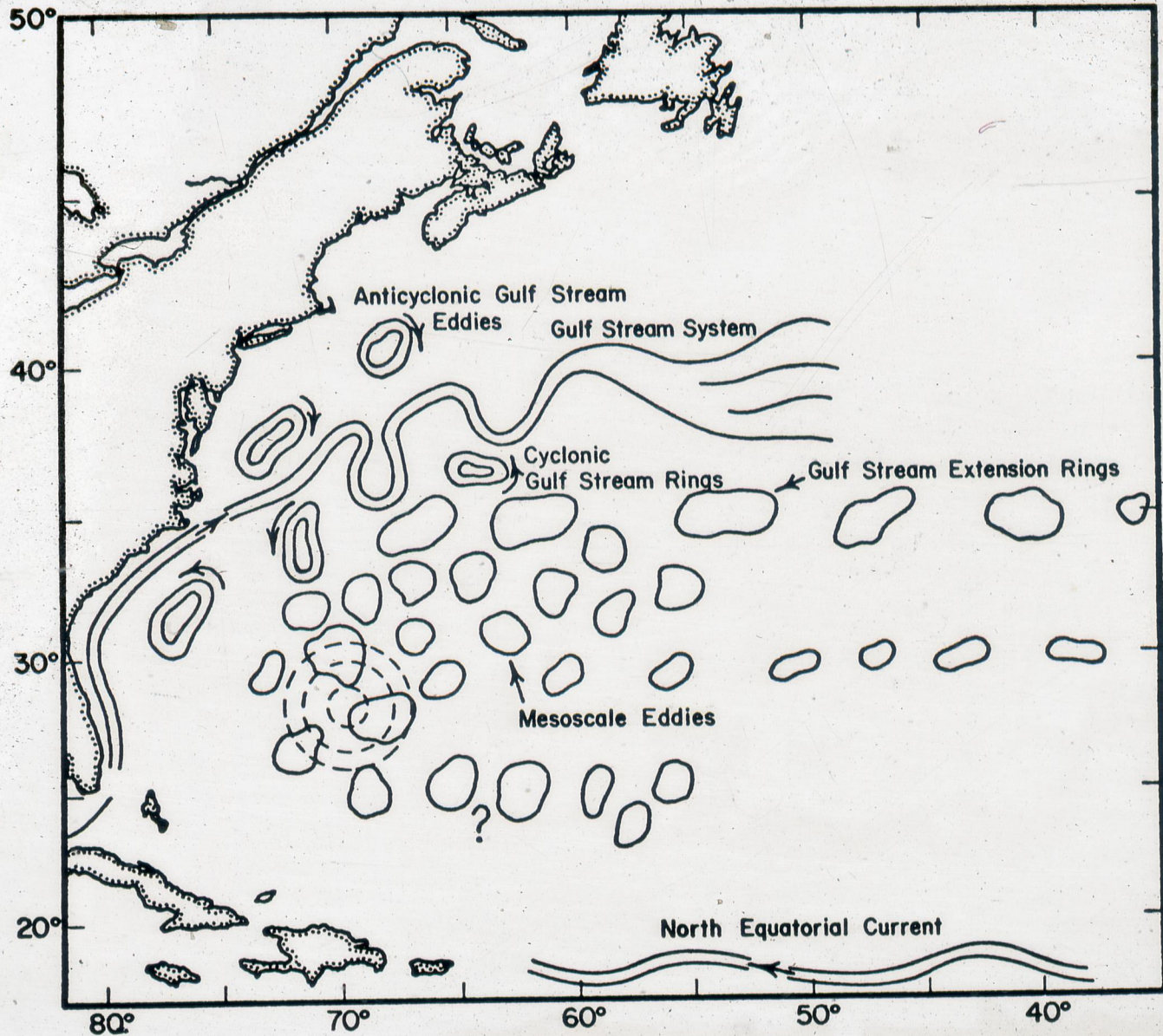


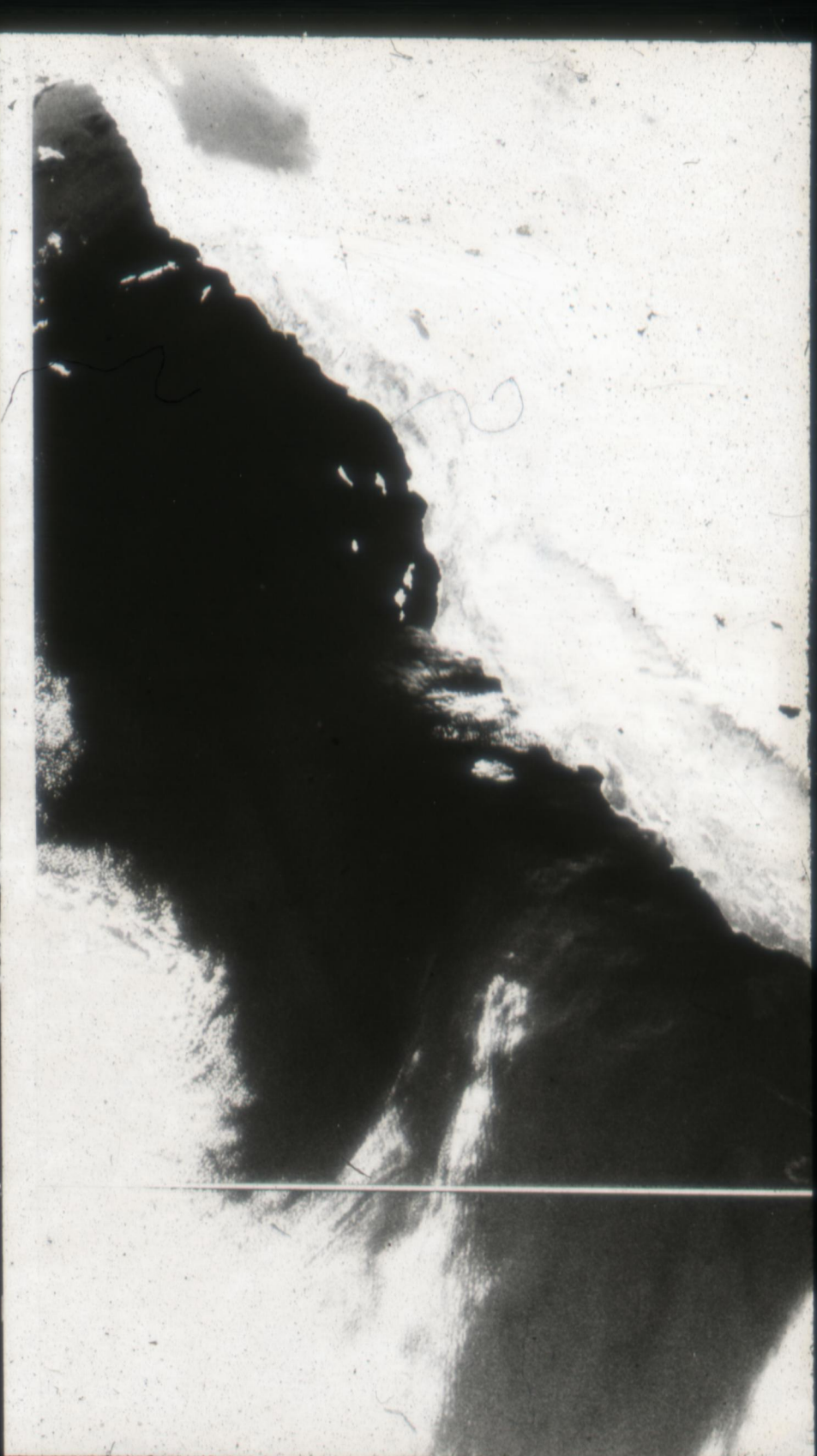
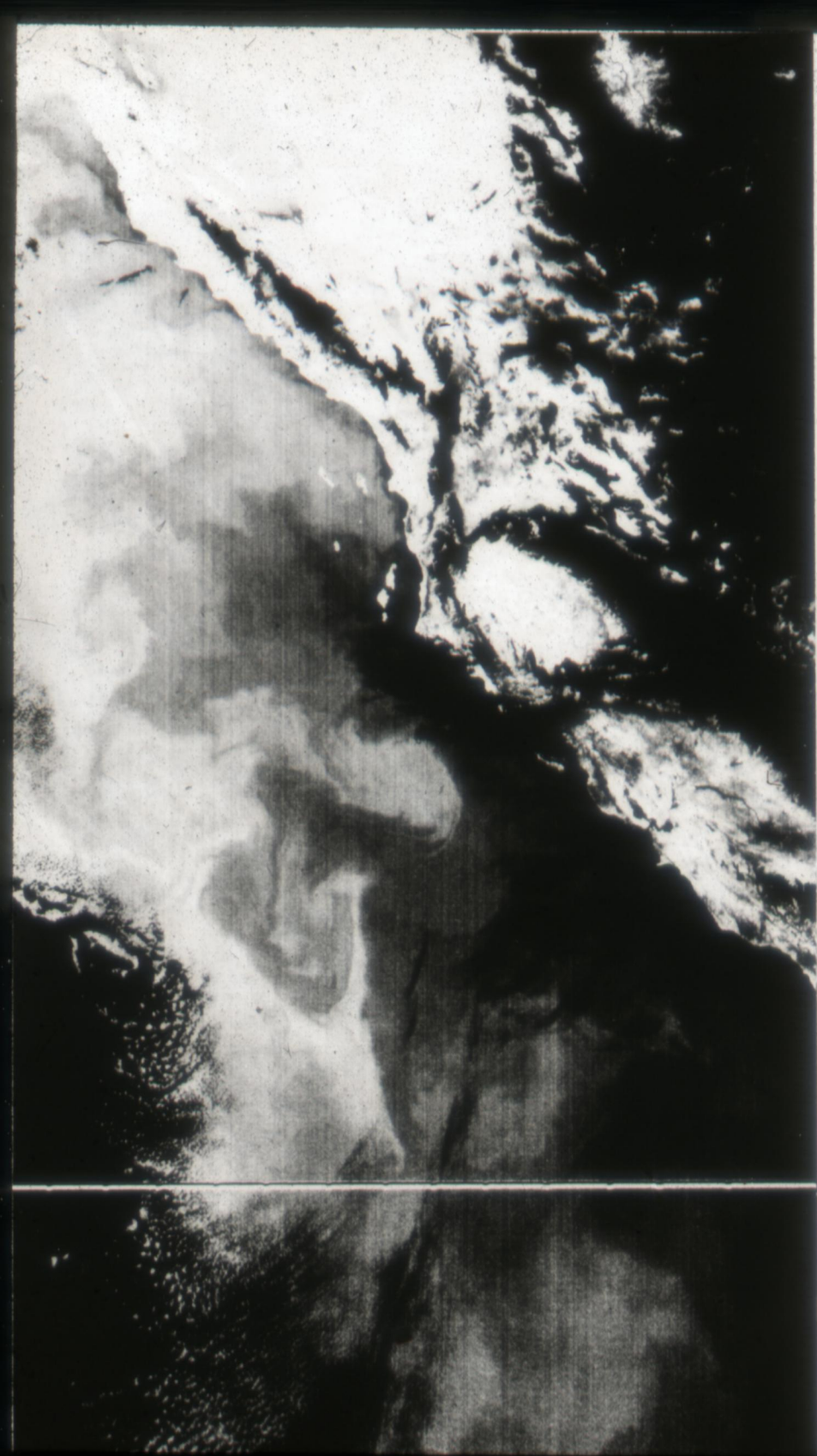


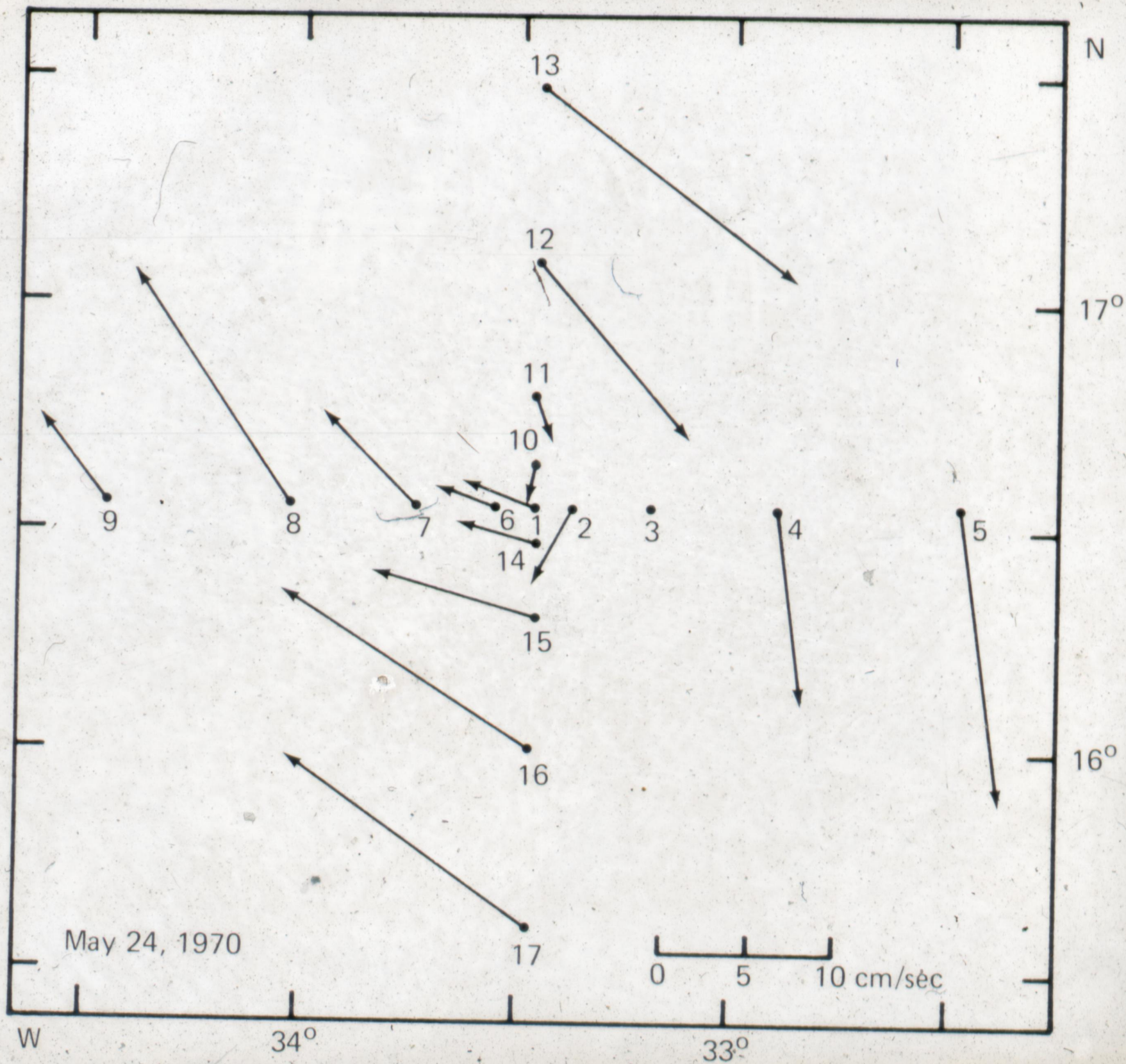
100 km

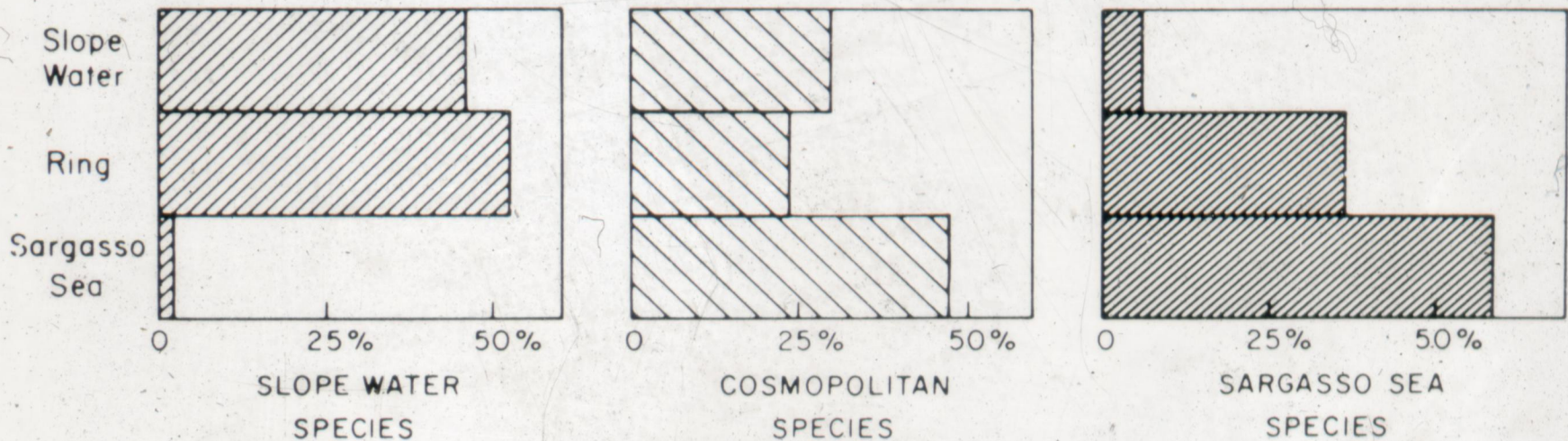
20 cm/sec





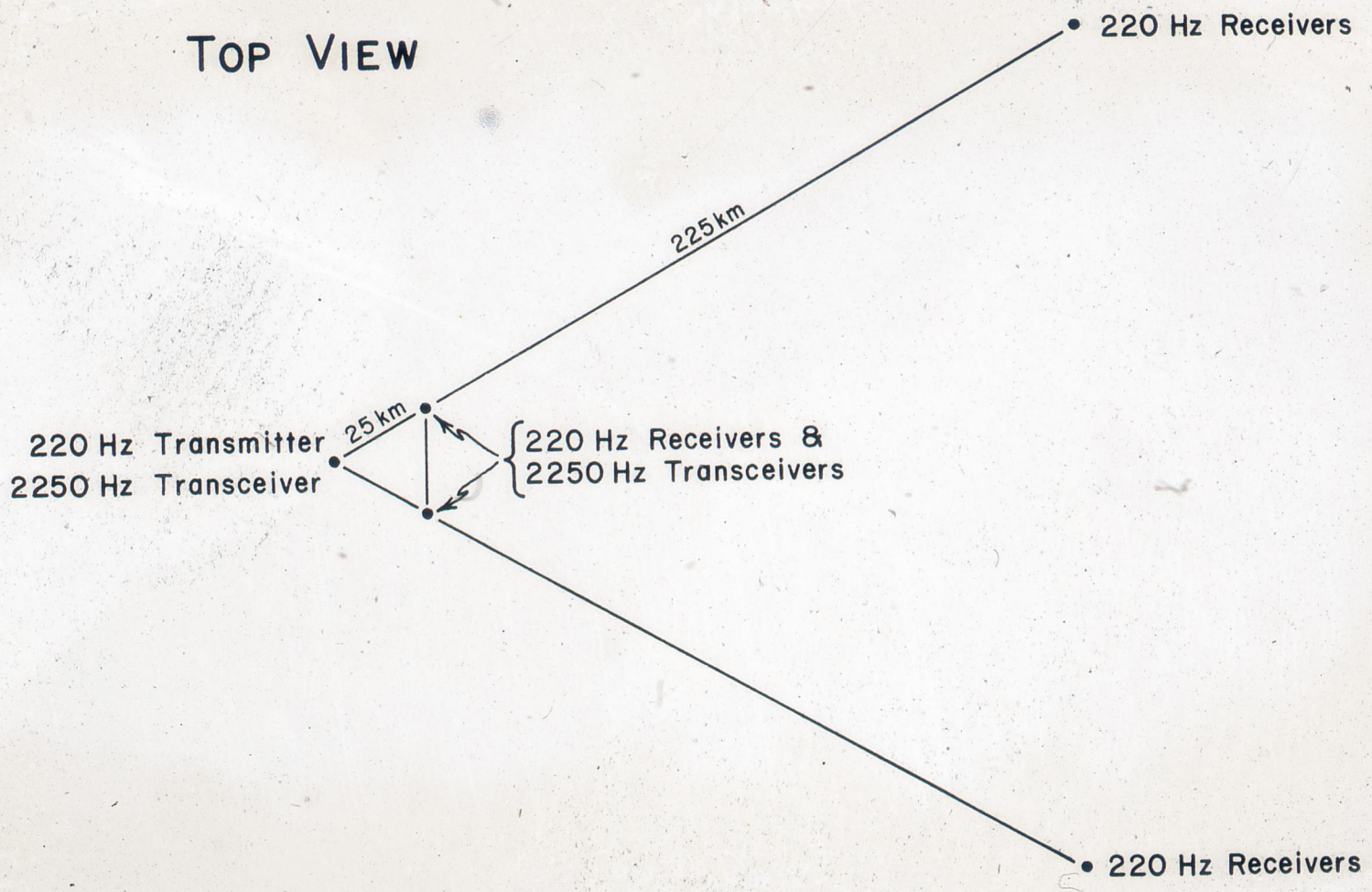


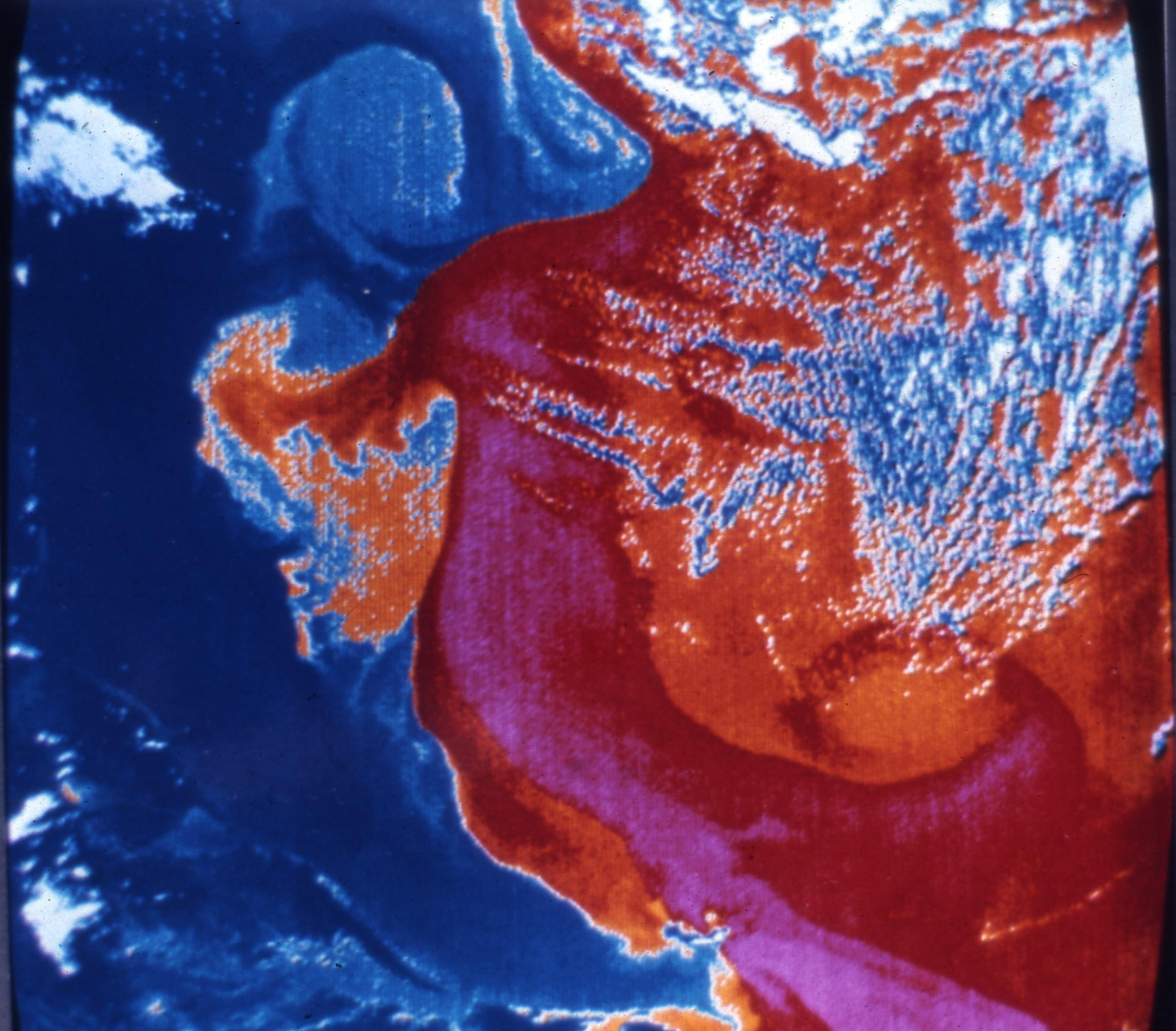


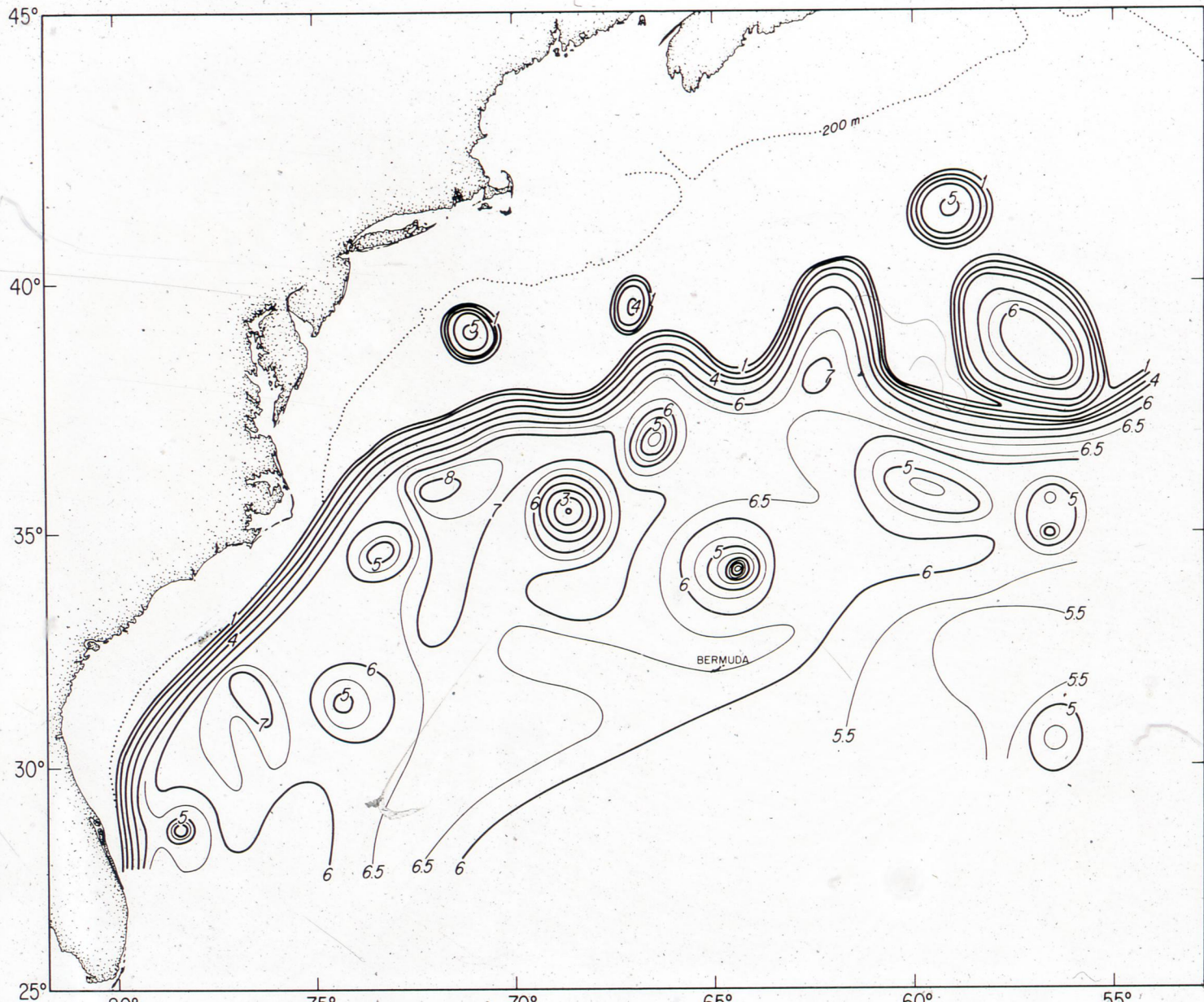


ABUNDANCE OF DOMINANT EUPHAUSIIDS

TOP VIEW







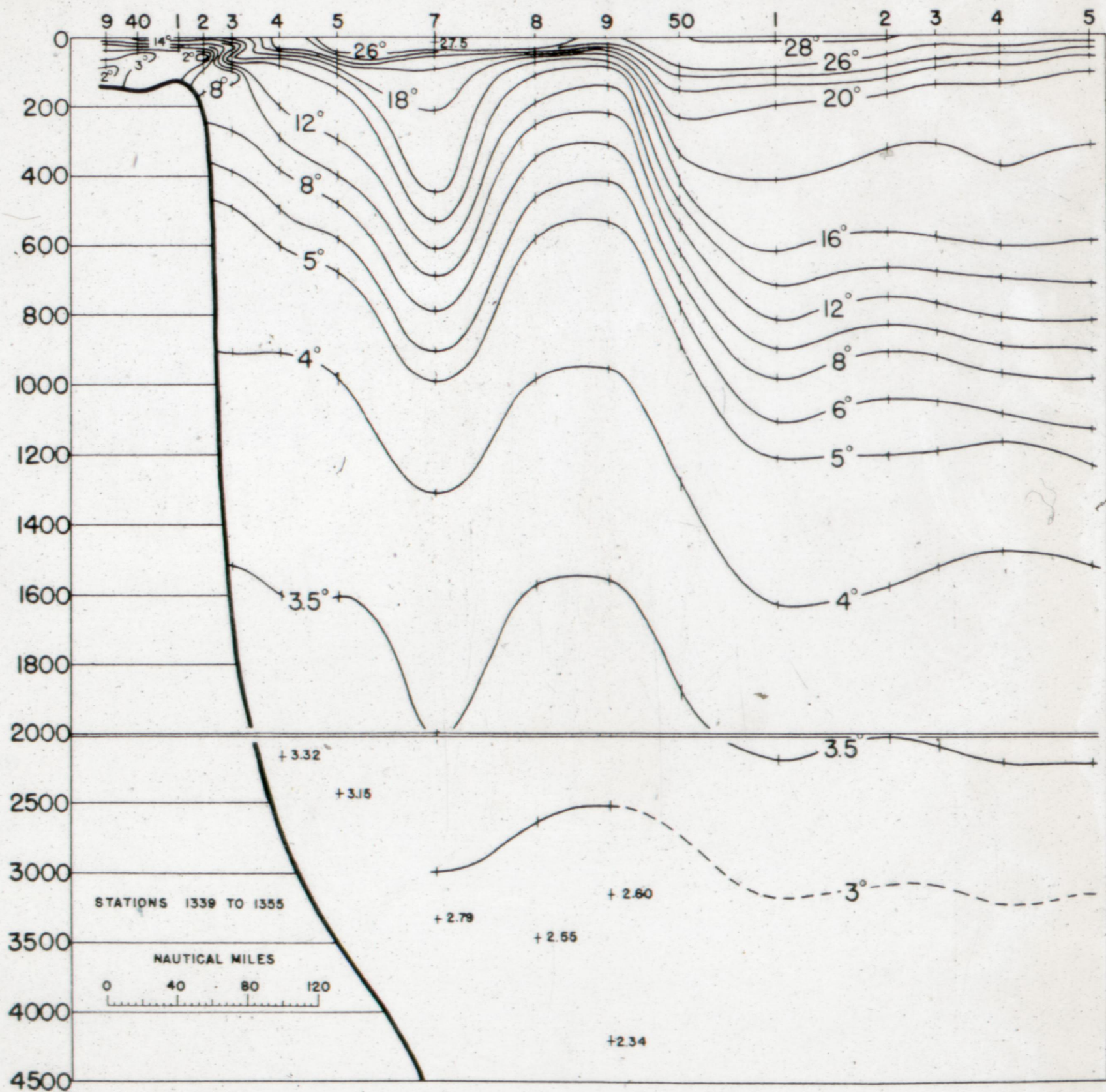


FIG. 14.—Temperature section, Nova Scotia-Bermuda, Aug. 14-20, 1932.

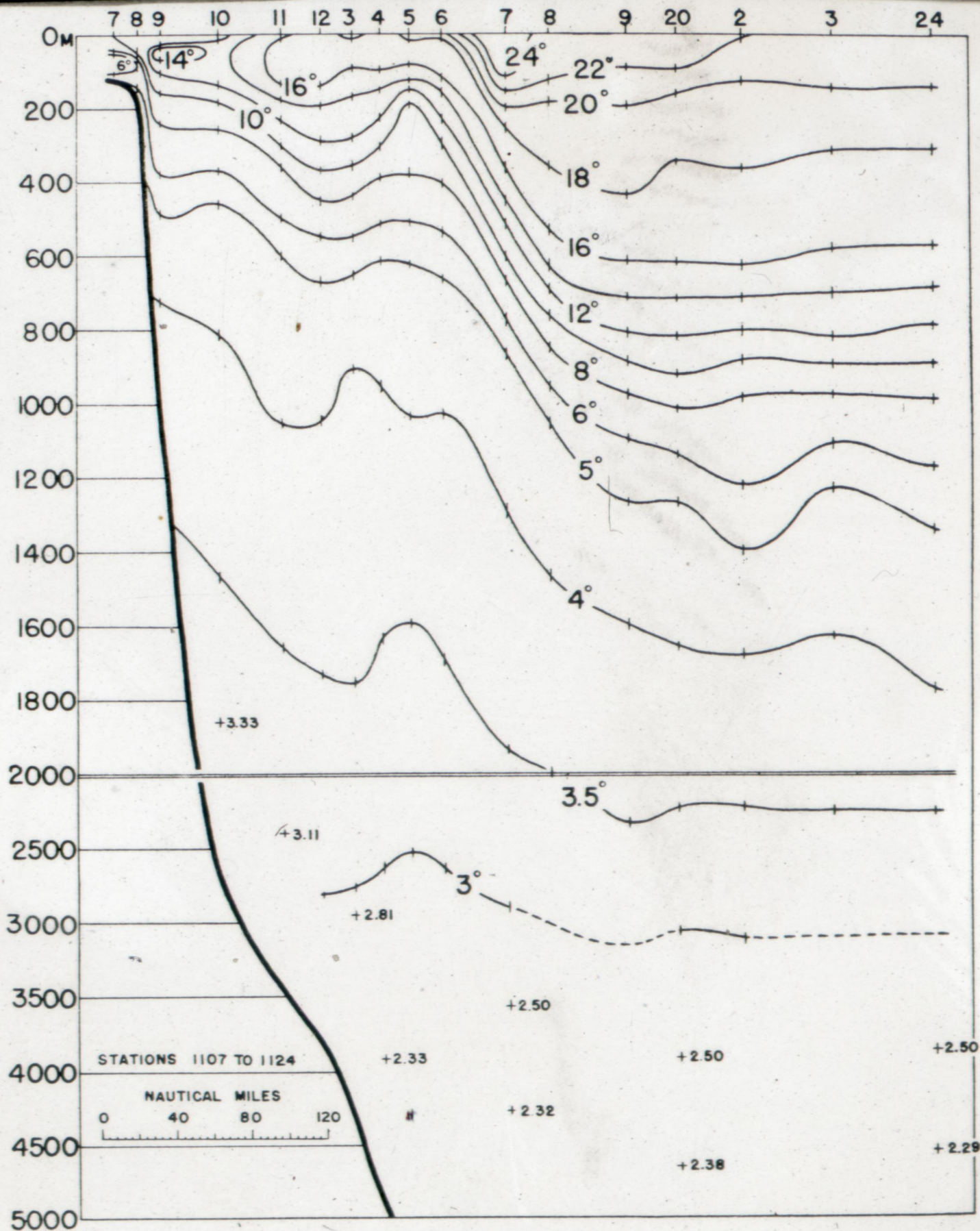


FIG. 12.—Temperature section, Nova Scotia-Bermuda, Nov. 21-26, 1931.

