

Mail It With Your Letters

Facts and Figures

ABOUT

SANTA ANA

METROPOLIS OF

Orange County

CALIFORNIA

1914

There's a Reason for Living Here

HEALTHFUL
INVIGORATING
C L E A N

Write
To
The
Cham-
ber
of
Com-
merce
Santa
Ana
Cal.
For
Full
Informa-
tion

PICTORIAL
STATISTICAL
DESCRIPTIVE

SANTA ANA, THE ORANGE COUNTY METROPOLIS

Population (estimated 1914) 15,000. Area of city, nine square miles. Suburban within an area of 25 square miles, population 10,000. Greater Santa Ana, 25,000.

Commercial center and county seat of ORANGE COUNTY, a rich agricultural and horticultural district watered by irrigation. Distance to mountains 10 miles; distance to sea 10 miles. 35 miles southeast of Los Angeles. 92 miles northwest of San Diego, between Exposition cities of 1915—ask for stop-over.

SIX BANKS with deposits of nearly \$6,000,000. Resources of over \$8,000,000. Savings & Trust Company. Building and Loan deposits \$550,000.

Building permits issued in 1913 totaled 460 with a value of \$704,009, leading all cities of its class.

The first three months of 1914, permits issued were worth \$224,000.

Miles of paved streets, 16; miles of graded streets, 50; miles of cement sidewalk, 100.

Outfall sewer to the ocean; large municipal sewer farm.

Theatres, 5; parks, 2; race track, 1; public halls, 4.

Twenty-eight churches and religious organizations.

Saloons—none.

Over fifty miscellaneous fraternal organizations and societies represented.

Death rate less than 10 per 1000, the most favorable in Southern California.

RAILWAY FACILITIES

Pacific Electric Railway to Los Angeles and the beaches.

Atchison, Topeka and Santa Fe Railway to Los Angeles, San Diego, north and east.

Southern Pacific Railway to Los Angeles, north and east.

SOURCES OF EMPLOYMENT

Sugar beet factories; large packing houses; railways; ice and cold storage plants; collar pad factory; large cannery; citrus fruit by-products factory; iron and brass foundry; planing mills; lumber mills; laundries; wholesale grocery; title companies; nurseries; artificial stone works; brick yards; garages; machine shops; Botanical and Wild Plant Improvement Garden; gas and electric companies; telephone companies; job printers. Many others too numerous to mention.

POSTAL BUSINESS

Total postal receipts, 1913, \$41,000. Beginning July 1, 1914, first-class postoffice.

Number of pieces of mail handled 1913, 6,000,000; value of money orders issued 1913, \$122,281.73; value of money orders paid, 1913, \$86,445.78; number of clerks and carriers, 26.

WATER SUPPLY

Owned by the city; pure artesian water pumped from subterranean rivers. Daily consumption, 2,500,000 gallons; storage capacity, 6,000,000 gallons. Cost per 1000 cubic feet (7500 gallons), \$1.00. Meters in use, 3632.

MISCELLANEOUS

Inexhaustible supply of natural gas, at a low rate; electric service for all purposes at low rates. Fresh fruits, vegetables and flowers the year round. Beautiful parks and residence streets; modern stores, theaters; one of the finest court houses in the state. Masonic Hall, B. P. O. E. Home, I. O. O. F. Home, Armory, Athletic Club. Commodious church buildings, noted for size and architectural beauty. Assessed valuation over \$7,000,000 on a low assessment basis.

The orange and lemon orchards, the walnut groves, the avocado trees, and flowers that bloom throughout the year are everywhere around beautiful Santa Ana, for it has aptly been called the land of eternal springtime.

NEWSPAPERS

Daily, 2; weekly, 2; semi-weekly, 1.

EDUCATIONAL

Total number of pupils 1913-1914, 3102.

Schools: 7 grammar; 5 kindergarten; domestic science, art, manual training; \$200,000 Polytechnic and High Schools; agricultural department; Commercial High School; Business College; Conservatory of Music; Public Library.

AUTOMOBILE TRIPS NEAR SANTA ANA

Orange County is expending over one and one-quarter million dollars on its highways, and will soon have one of the finest road systems for its size in the world.

Among the near-by trips the following will be found of unusual interest:

Hewes Park, 5 miles; Lemon Heights and Sky Line Drive, 5 miles; Orange County Park, a beautiful natural park of native trees and running mountain water, 10 miles; "Arden," the home of Modjeska in Santiago canyon, 20 miles; Silverado canyon, a beautiful scenic drive through a wooded road to a silver mine, 25 miles; Trabuco canyon, one of nature's wonder spots, 25 miles; Newport Bay, a land-locked harbor, extending 8 miles inland, 10 miles; Laguna Beach, where artists of international fame have painted the beauties of the mountain and the sea, 22 miles; San Juan Capistrano Mission, established 1776, a place of historical interest, 23 miles; the famous oil wells of Orange County, which produced \$12,000,000 worth of crude oil in 1913, 15 miles; Huntington Beach, whose citizens are proud of the longest solid concrete pier on the Pacific Coast, 12 miles; Bay City and Seal Beach, 14 miles; Santa Ana canyon, a combination of river and mountains 20 miles. Through paved thoroughfares to Los Angeles, San Diego, Pasadena and all other important Southern California cities.

METEOROLOGICAL

Average rainfall, 15 inches; snow unknown; sunstroke unknown. A most equable all-the-year climate; our weather records indicate that SANTA ANA is to Southern California what Southern California is to the rest of the world.

Investigate this daily temperature table and be convinced. Highest and lowest temperatures registered each day for the year ending April 30th, 1914:

Day of Month	1913					1914							
	May	June	July	Aug	Sept	Oct	Nov	Dec	Jan	Feb	Mar	Apr	
1	73-47	68-60	84-60	85-61	80-66	76-54	74-56	63-37	60-41	64-40	66-50	75-45	
2	70-48	70-60	82-62	90-62	78-64	77-60	75-51	63-40	59-50	64-40	68-52	75-50	
3	72-52	76-61	80-60	94-62	80-57	75-62	72-59	64-40	58-53	61-40	71-43	75-49	
4	72-54	72-60	80-50	93-64	83-58	77-62	72-54	62-39	70-52	63-42	73-42	77-56	
5	76-53	73-60	86-56	82-62	81-62	77-50	72-54	62-37	76-45	66-46	75-46	78-52	
6	73-54	75-62	86-64	79-61	80-64	77-48	73-48	65-36	76-43	64-44	86-53	74-58	
7	71-52	77-62	89-66	78-63	81-65	79-46	82-48	74-40	70-43	66-40	88-66	74-50	
8	71-52	77-60	86-65	77-64	81-62	76-48	82-53	73-42	67-47	68-37	84-59	77-52	
9	74-57	76-60	84-62	78-65	87-52	78-56	85-54	73-44	62-38	70-38	88-48	74-53	
10	74-53	74-52	85-64	81-61	94-59	87-53	86-55	72-41	67-44	70-42	70-50	75-58	
11	78-57	80-46	82-64	84-60	95-60	85-48	76-57	63-40	70-38	70-41	68-52	78-56	
12	74-52	80-60	78-60	83-58	93-62	84-50	73-60	66-40	66-40	70-42	81-50	80-49	
13	70-56	80-62	76-66	81-55	93-64	76-47	70-55	65-40	67-36	70-42	84-47	84-50	
14	75-57	80-60	82-66	78-56	86-59	72-52	68-48	64-48	70-36	76-45	81-46	85-54	
15	77-51	79-59	82-64	79-58	86-58	72-54	75-48	64-40	69-40	78-56	79-48	85-56	
16	78-52	80-60	80-66	77-58	96-59	75-52	72-52	64-43	64-57	78-50	90-72	76-54	
17	78-57	79-60	78-68	80-57	106-62	85-50	69-50	66-46	62-51	72-52	90-60	88-50	
18	74-57	82-62	78-66	80-56	88-72	91-52	70-53	64-38	63-54	62-51	82-57	93-52	
19	73-60	84-56	81-61	79-59	88-65	93-56	65-51	62-40	60-47	72-51	74-54	90-54	
20	74-59	84-54	81-67	85-59	86-65	90-57	68-50	63-41	60-38	70-59	72-60	79-55	
21	74-58	83-60	84-65	86-63	86-62	80-55	66-50	62-40	63-38	70-56	73-62	70-51	
22	78-60	78-60	81-64	90-64	79-64	76-60	70-44	58-49	64-42	67-46	72-54	66-46	
23	77-59	77-62	78-64	89-64	74-66	73-58	72-44	64-42	66-48	72-46	67-52	74-45	
24	76-52	80-63	76-62	88-67	80-57	72-56	71-46	60-40	62-53	72-47	68-54	72-46	
25	72-60	74-62	77-58	90-65	82-54	78-53	68-43	58-44	64-56	67-45	70-50	76-49	
26	68-60	76-60	76-64	88-65	90-52	75-55	66-42	63-44	61-55	73-48	68-54	77-54	
27	70-60	76-60	77-61	88-68	90-52	76-54	68-44	66-48	62-48	71-42	69-53	77-52	
28	70-59	78-59	74-64	92-68	85-54	74-56	68-48	64-42	60-36	73-43	71-54	74-55	
29	70-58	93-58	78-64	86-67	76-57	75-58	68-44	61-43	67-38	71-49	70-53	
30	76-54	89-60	77-56	80-65	83-53	74-58	63-41	56-52	68-40	68-45	73-53	
31	72-60	82-61	78-66	73-54	63-53	68-42	70-46	
Average Maximum	74	78	80	83	85	78	72	65	65	69	75	78	
Average Minimum	55	59	62	62	60	54	50	42	45	45	52	52	
Average Daily	65	69	72	73	72	66	61	54	55	58	64	65	

Average daily temperature 65 degrees.

Story of Prosperity Told in Cold Figures

Total Value of Orange County's Important Products for the Year 1913

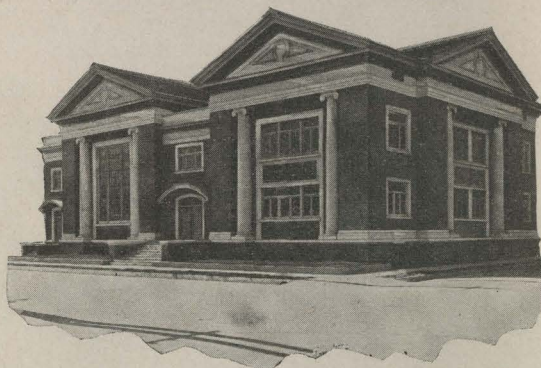
Walnuts	-	-	-	\$ 1,500,000
Oranges	-	-	-	3,500,000
Lemons	-	-	-	200,000
Sugar Beets	-	-	-	3,500,000
Beans	-	-	-	1,500,000
Apricots	-	-	-	250,000
Poultry and Eggs	-	-	-	1,500,000
Sugar	-	-	-	5,000,000
Crude Oil	-	-	-	12,000,000
Celery	-	-	-	600,000
Bees and Honey	-	-	-	100,000
Irish Potatoes	-	-	-	650,000
Sweet Potatoes	-	-	-	135,000
Chili Peppers	-	-	-	250,000
Grain	-	-	-	600,000
Hay	-	-	-	500,000
Live Stock	-	-	-	300,000
Tomatoes	-	-	-	60,000
Berries	-	-	-	40,000
Butter	-	-	-	50,000
Cream	-	-	-	75,000
Apples	-	-	-	10,000
Olives and Olive Oil	-	-	-	100,000
Wine and Beer	-	-	-	125,000
Wool	-	-	-	25,000
Miscellaneous Fruits	-	-	-	75,000
Miscellaneous Vegetables	-	-	-	120,000
Avocados (Alligator Pear)	-	-	-	4,000

Grand total Value - - - \$32,769,000

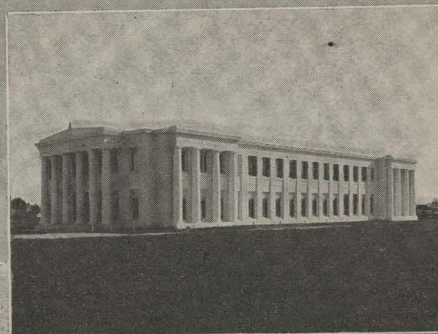
Santa Ana is the commercial center of Orange County's enormous annual production, as shown above. This section might be quarantined from all the world and live on in luxury.



CONGREGATIONAL CHURCH



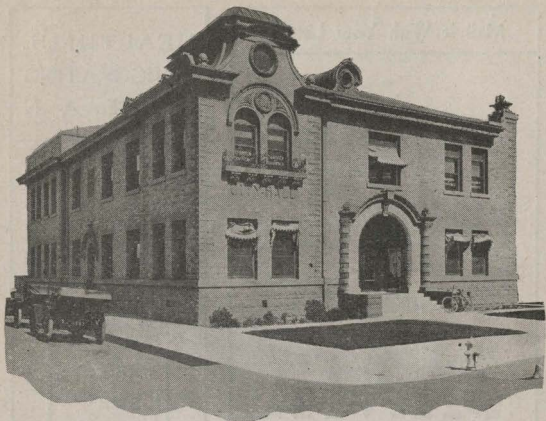
UNITED PRESBYTERIAN CHURCH



POLYTECHNIC HIGH SCHOOL

☐ Santa Ana enjoys unexcelled educational advantages

Melvin - 3 Ban UCI UCSB



CITY HALL AND CHAMBER OF COMMERCE

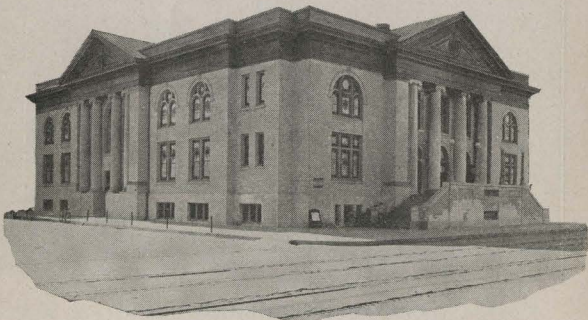


Orange County citizens are proud of the 160 acre park
10 miles from ^{the}Santa Ana

FIRST PRESBYTERIAN CHURCH



Twenty-eight churches and religious organizations in Santa Ana. Many of the structures being costly and artistically beautiful.



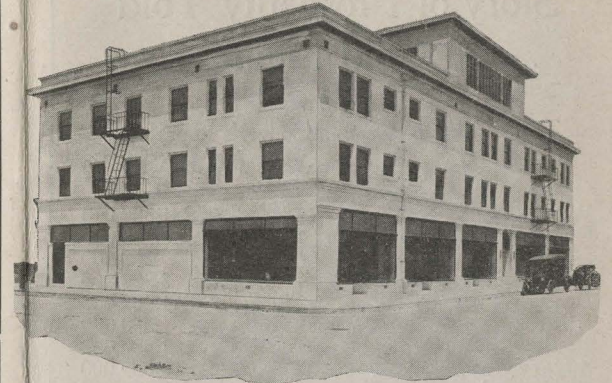
FIRST BAPTIST CHURCH



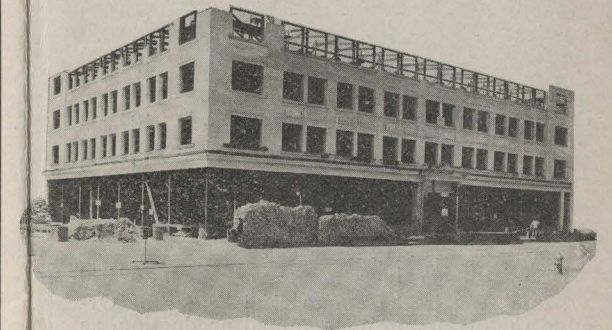
BUSY BUSINESS STREETS



MEYER APARTMENTS

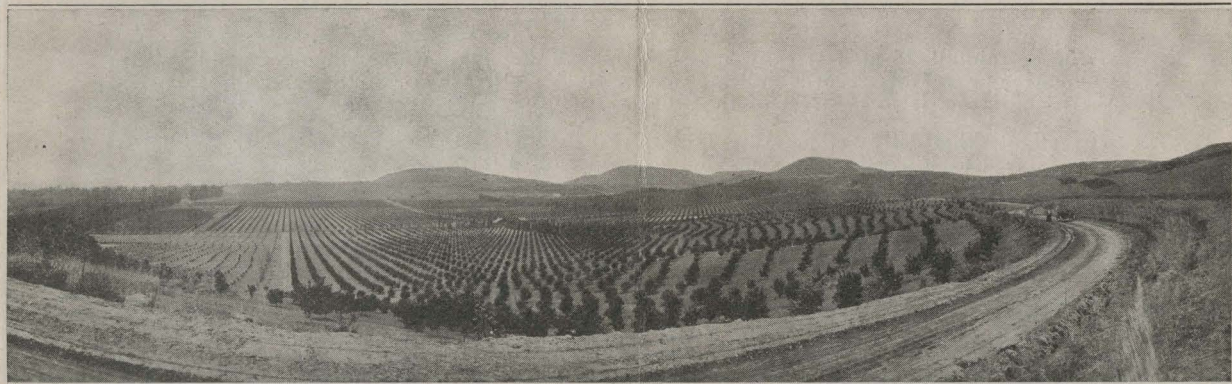


Building permits issued in 1913 totaled 460, with a value of \$704,000.00, Santa Ana leading all cities in its class. The first three months in 1914 permits issued were worth \$224,000.00.



NEW SPURGEON BLOCK

SKY-LINE DRIVE AND LEMON HEIGHTS

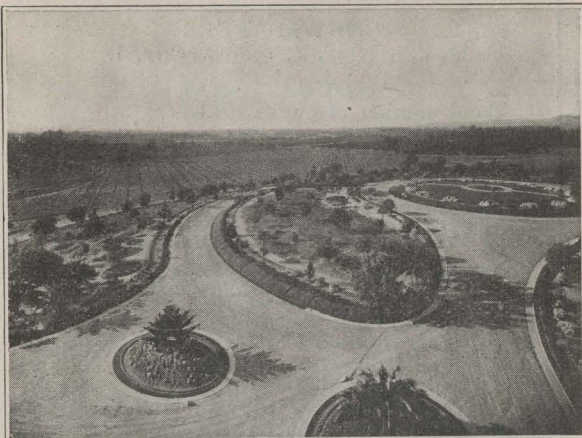


☐ Sky Line Drive and Lemon Heights, showing a wonderful new citrus district in Orange County's famous frostless belt, near Santa Ana

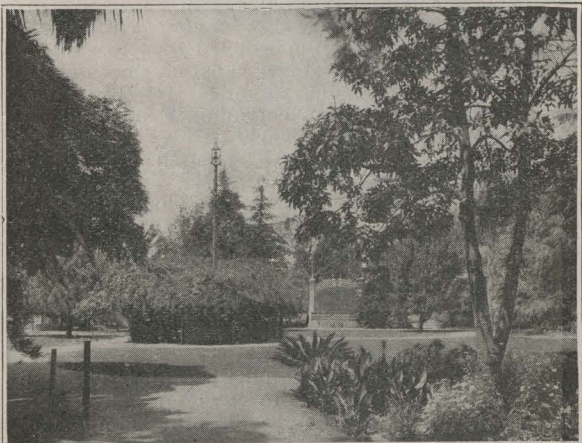
MISSION AT SAN JUAN CAPISTRANO



Ruins of the old Mission at San Juan Capistrano, established 1776, twenty-three miles from Santa Ana



BEAUTIFUL PARKS IN AND NEAR SANTA ANA



ORANGE COUNTY COURT HOUSE



STREET SCENES IN RESIDENCE SECTION



SANTA ANA ATHLETIC CLUB