

*REPORT AND INDEX OF  
UNDERWAY MARINE GEOPHYSICAL DATA*

**PANORAMA EXPEDITION**

**LEG 2**

**(PANR02MV)**

R/V Melville)

(Issued May 1998)

**Ports:**

Acapulco, Mexico (14 December 1997)

to

Callao, Peru (29 December 1997)

**Chief Scientist:**

Nancy Kanjorski (Scripps Institution)

James Charters, Computer Engineer

James Charters, acting Resident Marine Tech

Post-Cruise Processing and Report Preparation by the  
Geological Data Center, Scripps Institution of Oceanography  
La Jolla, California 92093-0223

**NOTE:** *This is an index of underway geophysical data edited and processed after the completion of the cruise leg and is intended primarily for informal use within the institution. This document is not to be reproduced or distributed outside Scripps without prior approval of the chief scientist or the Geological Data Center, Scripps Institution of Oceanography, La Jolla, California 92093-0223*

GDC Cruise I.D.# 278

**REPORT AND INDEX OF NAVIGATION  
AND UNDERWAY GEOPHYSICAL DATA**

Processed by the Geological Data Center  
Scripps Institution of Oceanography

**Contents:**

**Index Chart** - gives track of cruise leg, dates, ports, and mileage of each type of data collected.

**Track Charts** - annotated with dates and hour ticks.

**Profiles** - depth, magnetic and gravity free air anomaly vs. distance. (Sections of track with seismic reflection data have a wide black line along the bottom of the profile.)

**Sample Index** - list of begin/end times and positions of all underway records as well as samples and measurements from other disciplines collected on the leg.

**NOTE:** One or more of the underway data types may not be collected on a given leg. For information on the availability and reproduction costs of data in the following forms, contact S.M. Smith, Curator, Geological Data Center, Scripps Institution of Oceanography, La Jolla, California 92093-0223. Phone: (619)534-2752, FAX: (619)534-6500, Internet email: ssmith@ucsd.edu

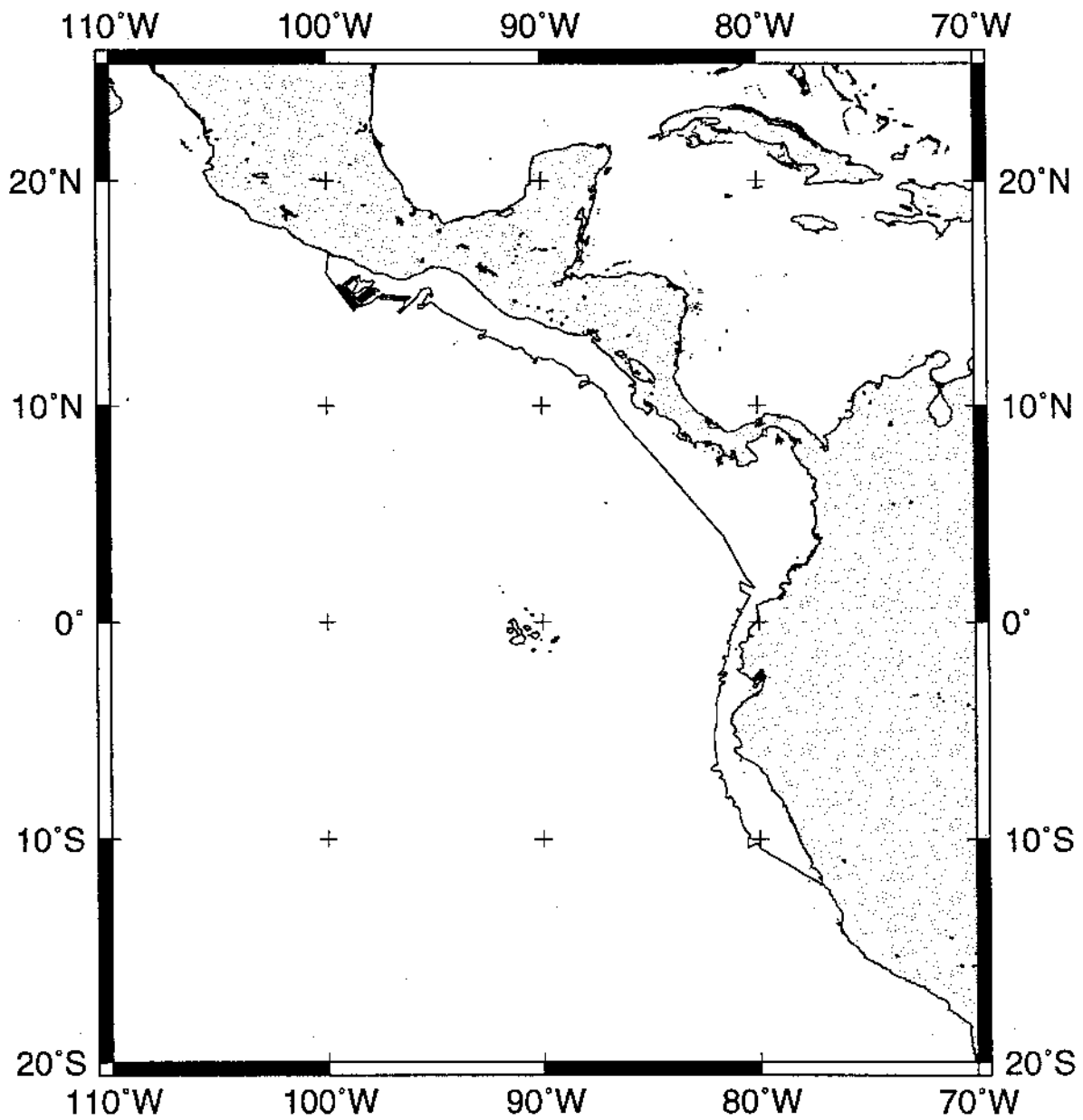
1. Files via ftp or on 8mm (Exabyte) and 4mm (DAT) magnetic tape:
  - a) Separate time series ASCII files of navigation, single beam depth, gravity and magnetics.
  - b) Above data in a single merged ASCII file in the MGD77 Exchange Format.
  - c) SeaBeam depth data (binary, Sun byte order)
  - d) SeaBeam Sidescan data.
2. Microfilm (35 mm flowfilm) or hard copies of:
  - a) Underway watch log book.
  - b) SeaBeam vertical beam profile/Sidescan records.
  - c) 3.5 kHz and 12 kHz echosounder records.
  - d) Seismic reflection profiler records.
3. Navigation listing with times and positions of fixes and course and speed changes.
4. Custom plots in Mercator projection:
  - a) Track plots.
  - b) SeaBeam depth contour plots.
  - c) Depth, magnetic or gravity values printed or profiled along track.

### Sea Beam Data Collected in Ancillary Mode

In the absence of funding for collecting multi-beam data on this leg, Sea Beam data were collected by SIO/STS in ancillary mode. In this mode of operation, no Hardware Technician or SB/Underway Processor were on board and the types of realtime records and post-processed data products are reduced from those available under the fully funded mode.

The Sea Beam data remain proprietary to the SIO Shipboard Technical Support Group, not the chief scientist.

May 1998



**PANORAMA EXPEDITION LEG 2**

**CHIEF SCIENTIST:** Nancy Kanjorski, Scripps Institution

**PORTS:** Acapulco, Mexico - Callao, Peru

**DATES:** 14 - 29 December 1997

**SHIP:** R/V Melville

**TOTAL MILEAGE OF UNDERWAY DATA COLLECTED**

**Cruise - 4315 miles**

**Magnetics - 4080 miles**

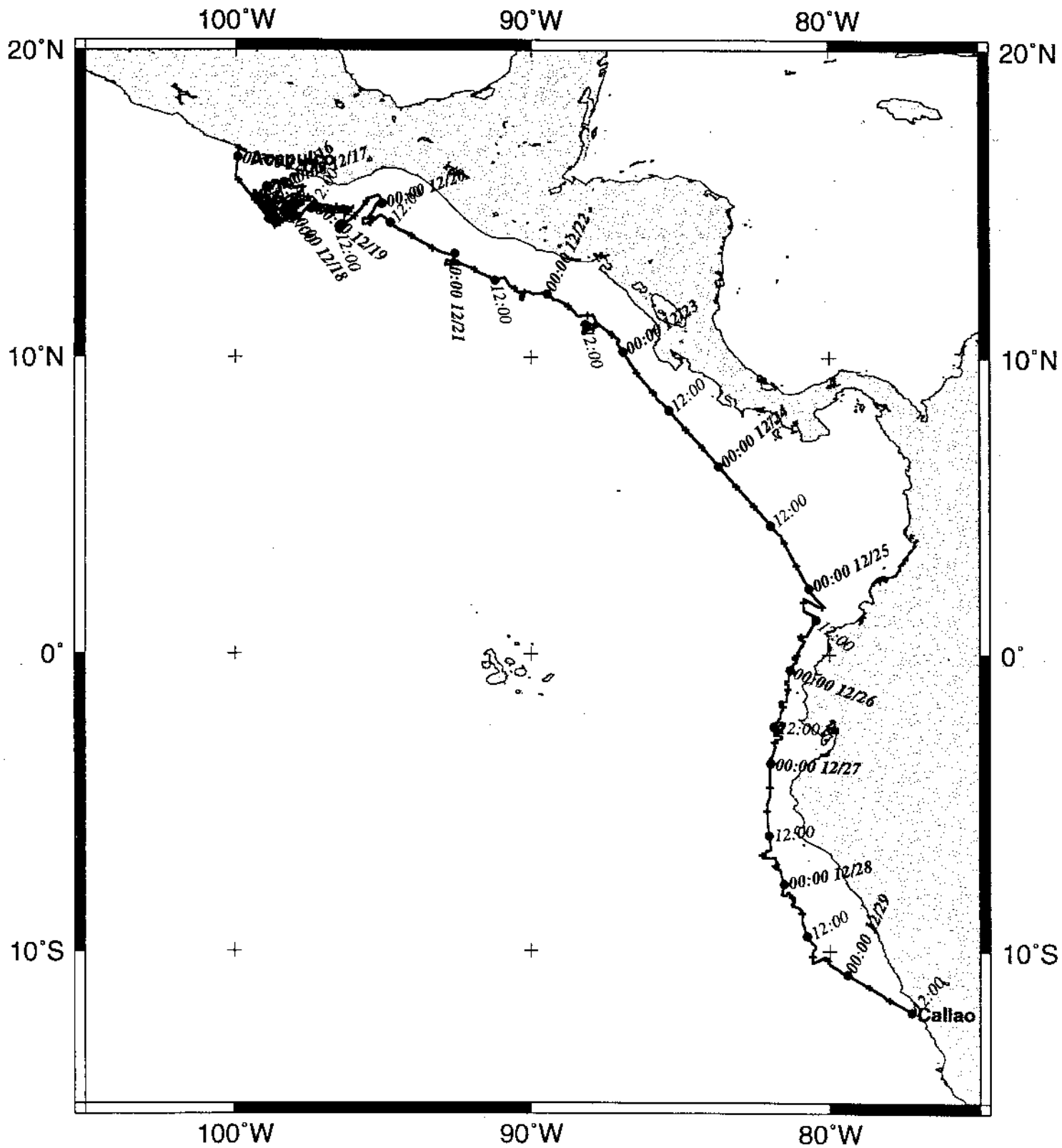
**Bathymetry - 4310 miles**

**Seismic Reflection - none collected**

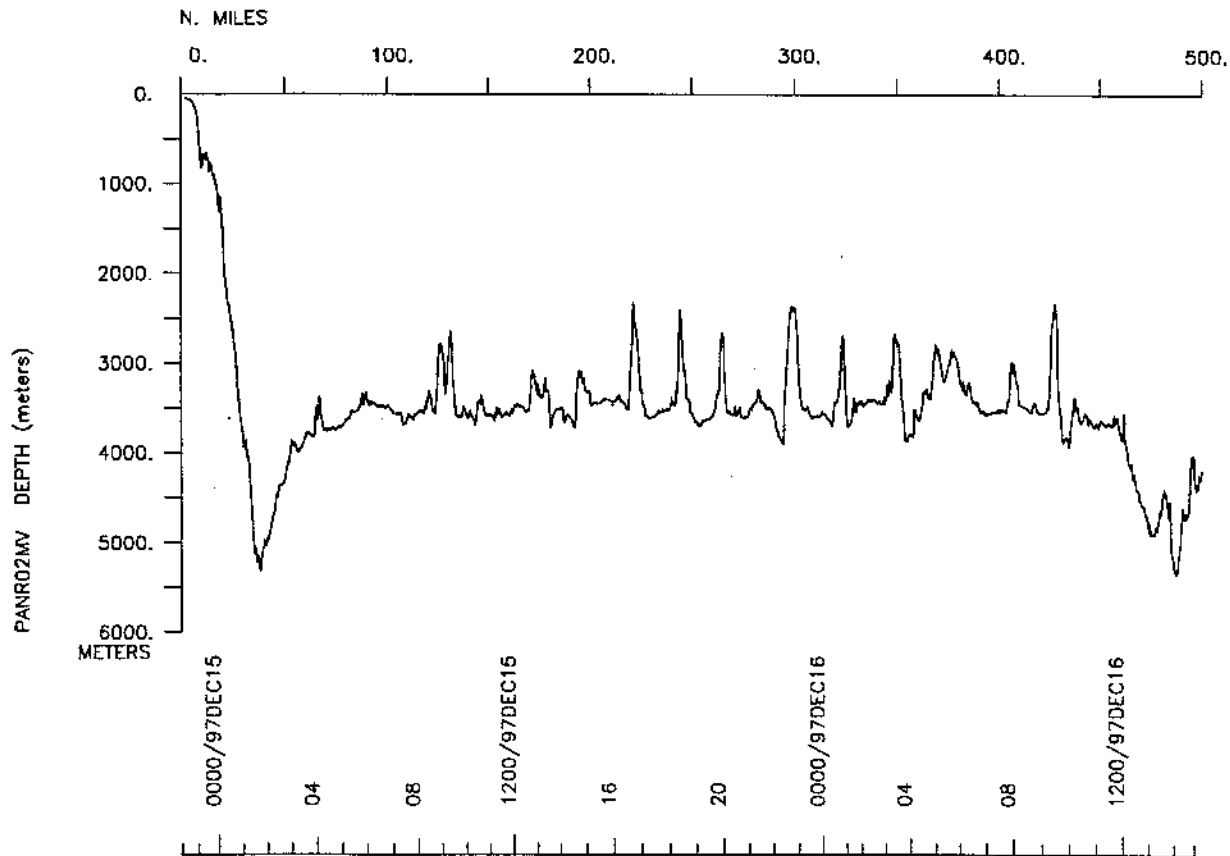
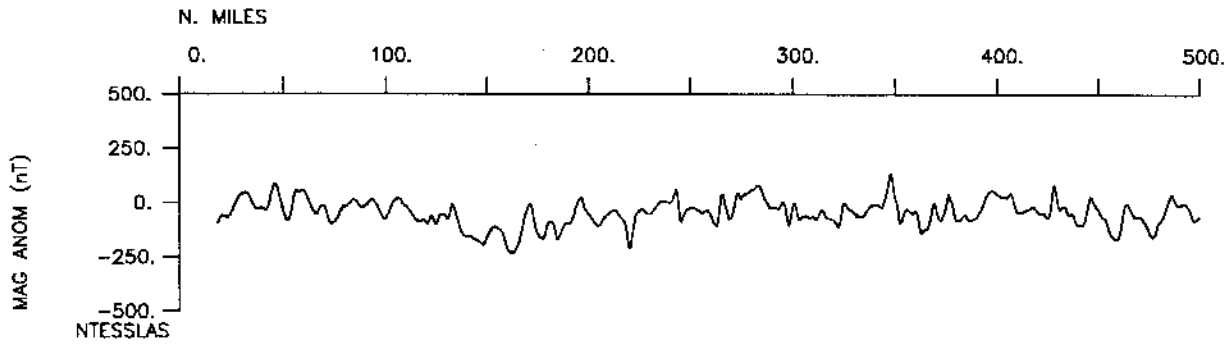
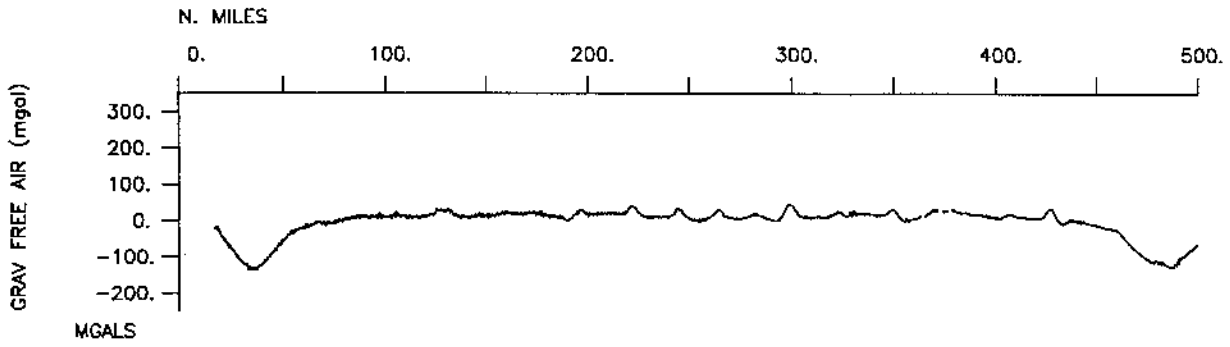
**Sea Beam - 4310 miles**

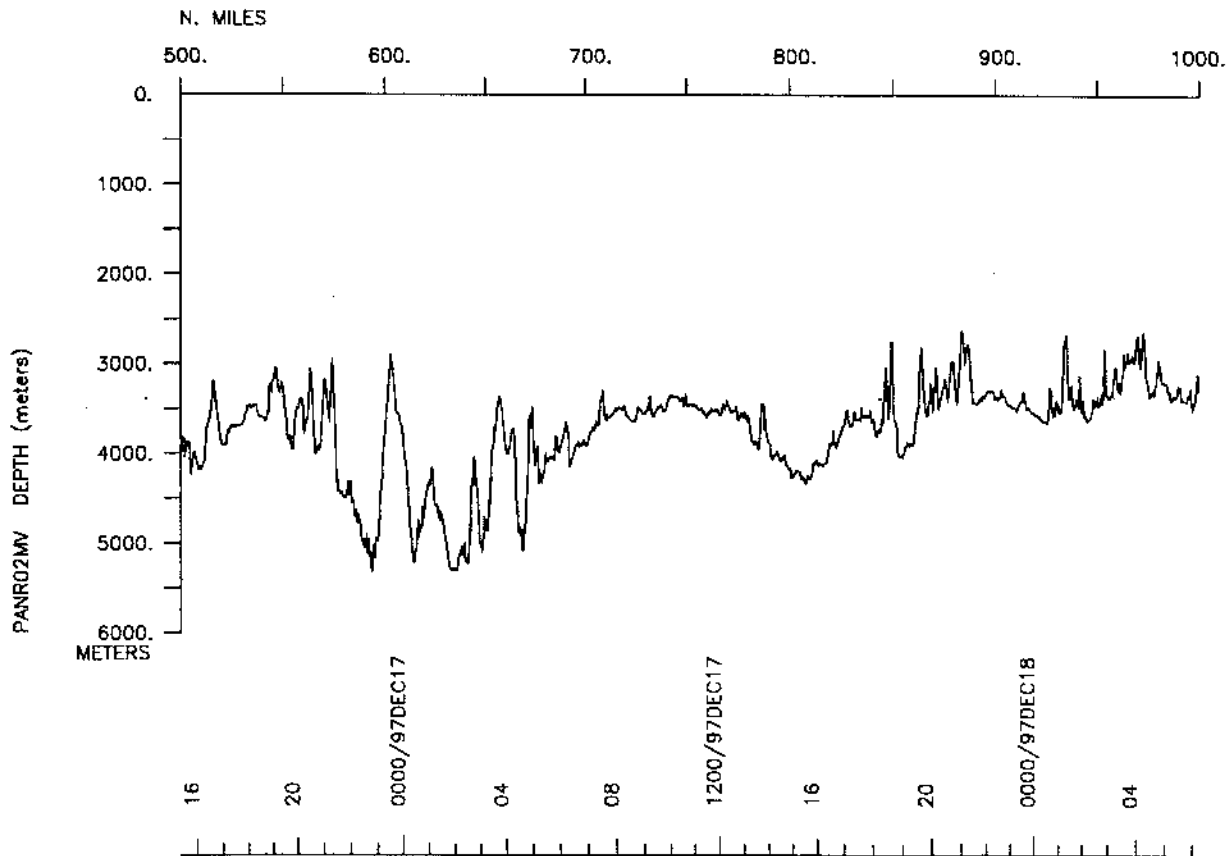
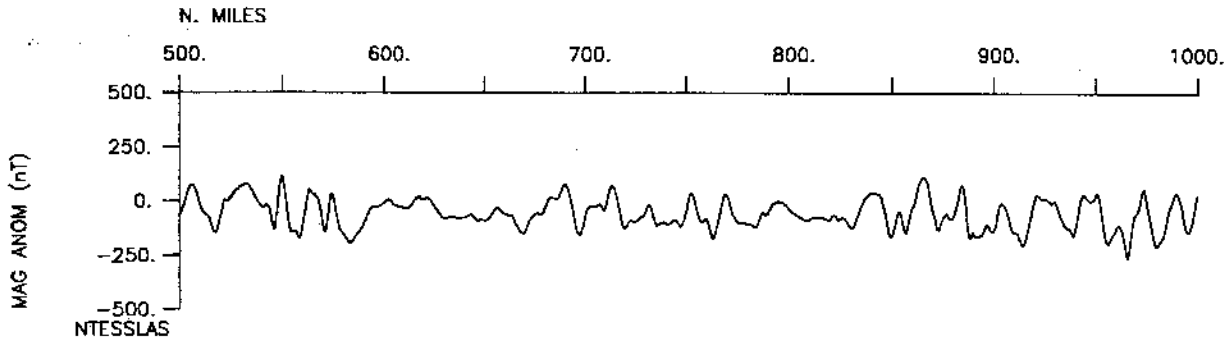
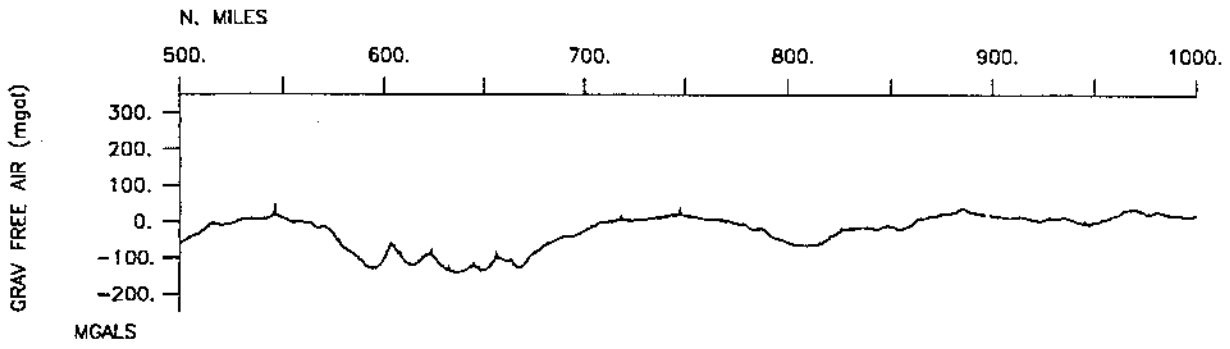
**Gravity - 4130 miles**

# PANR02MV

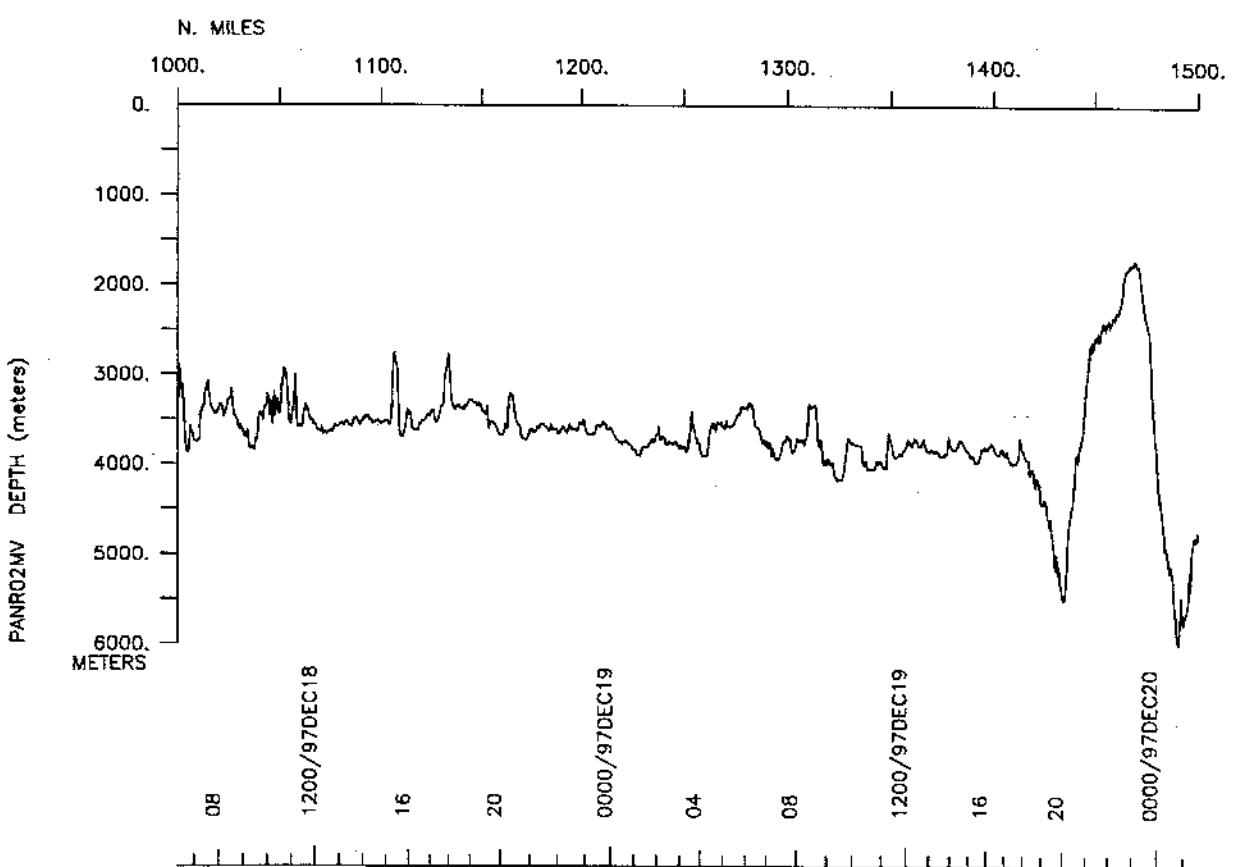
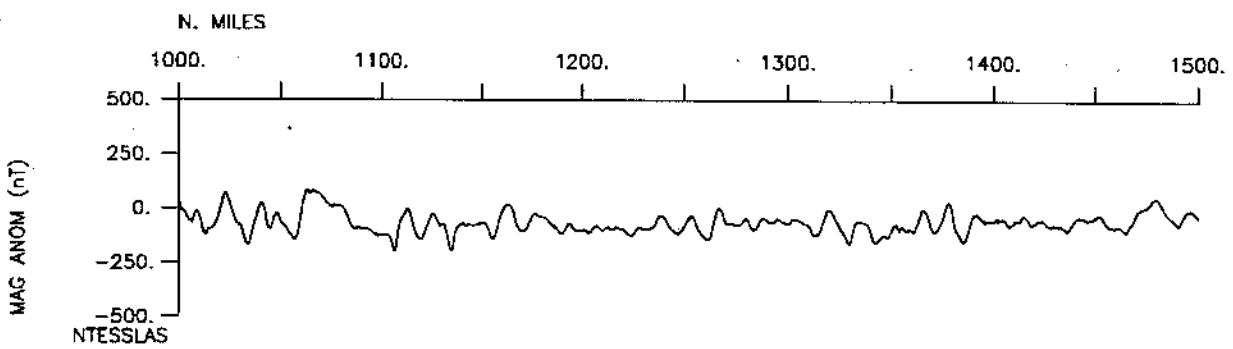
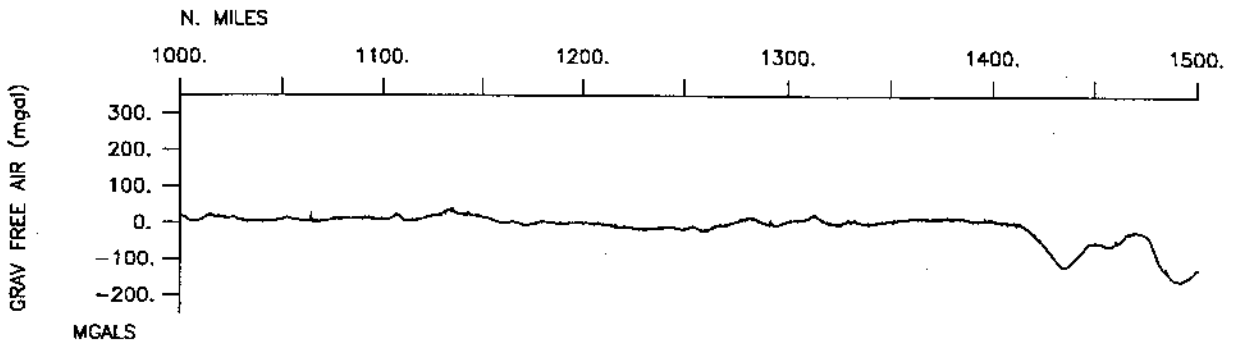


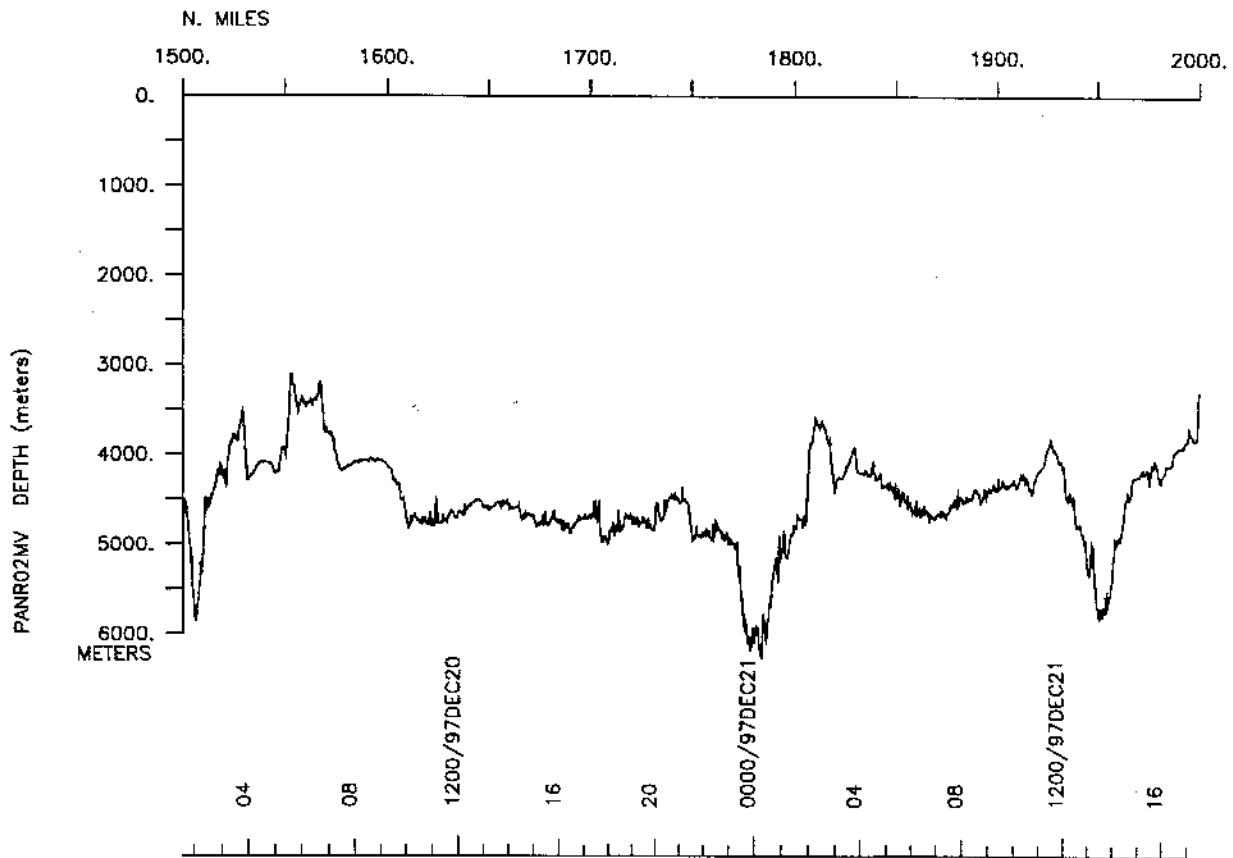
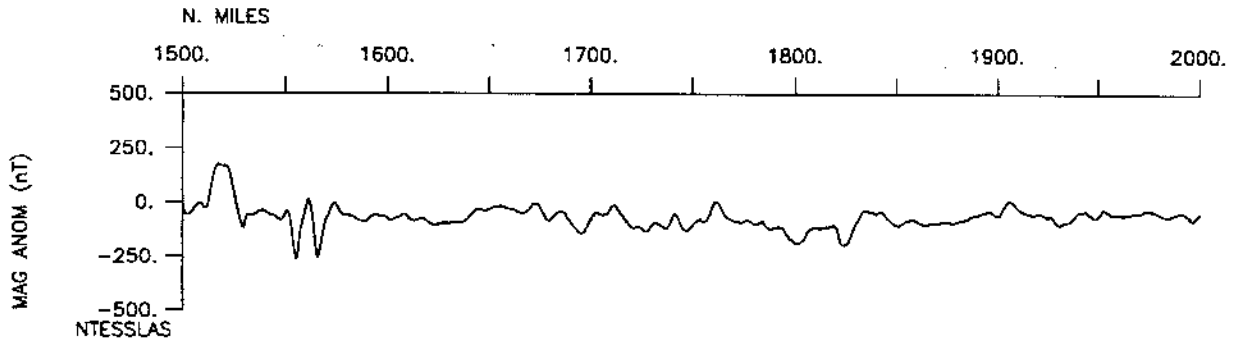
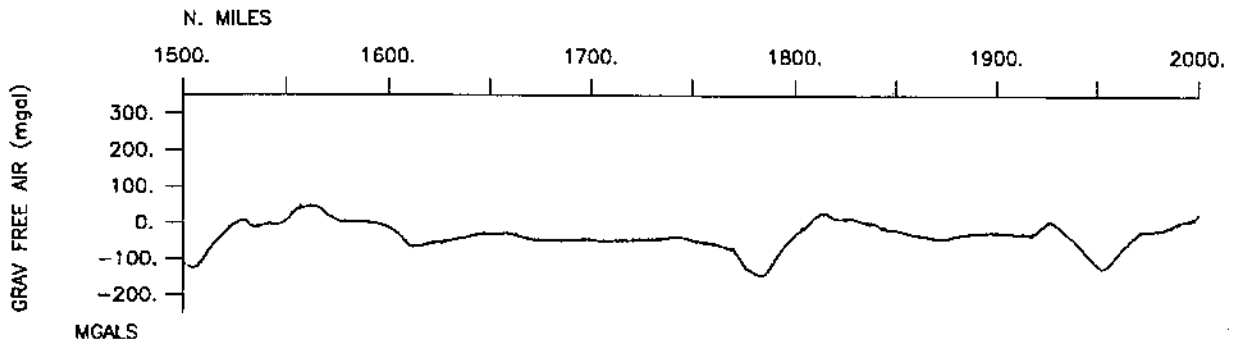


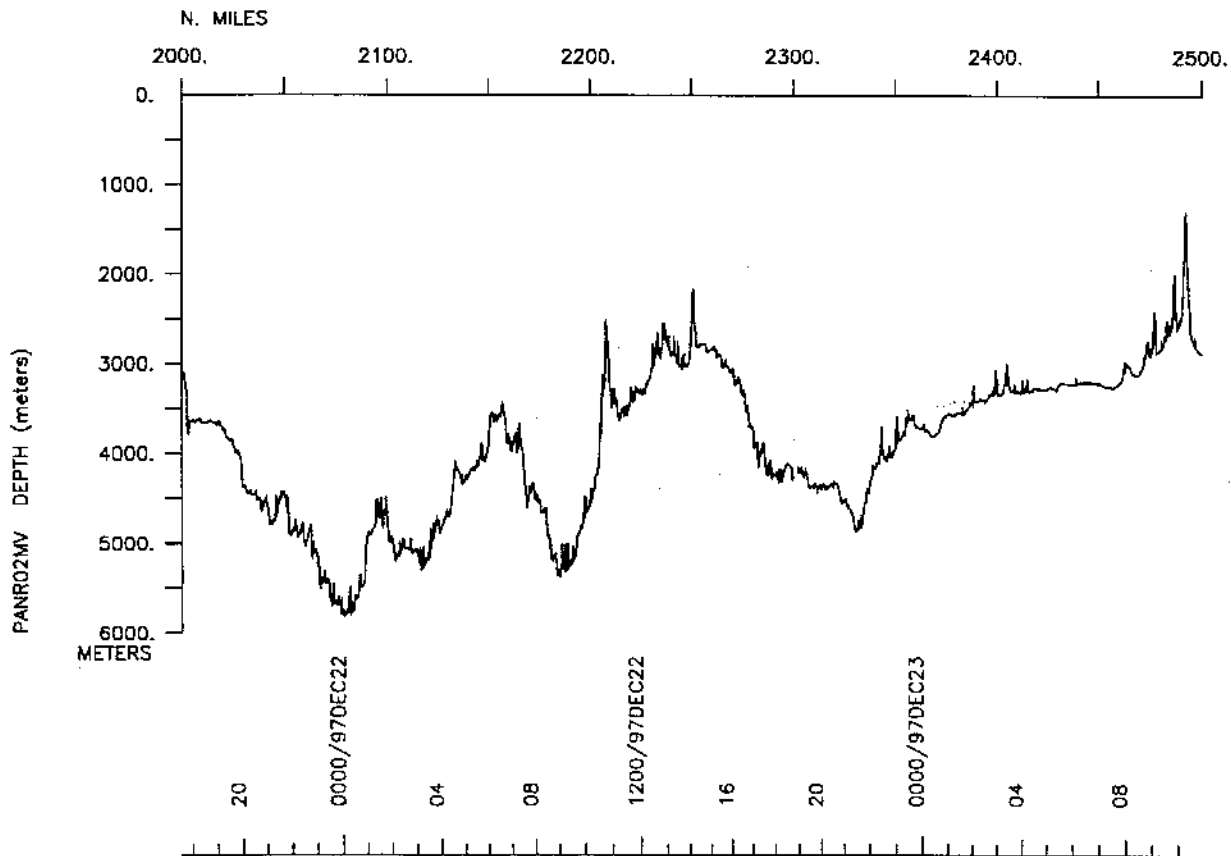
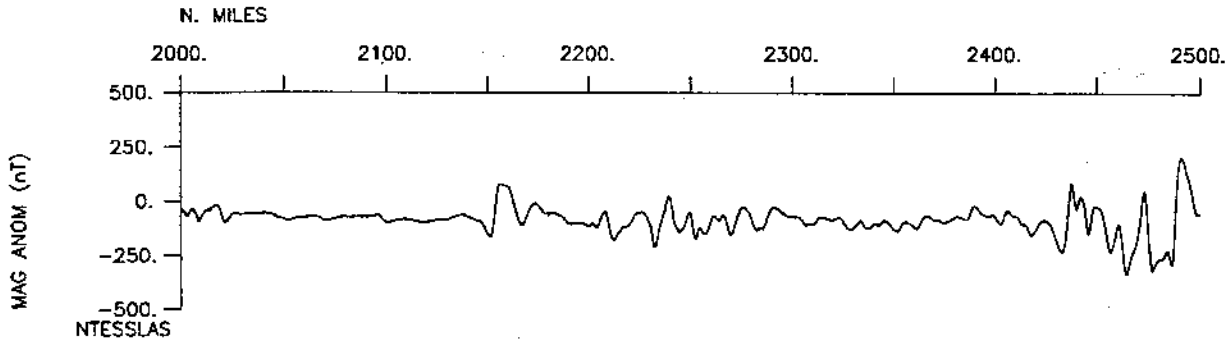
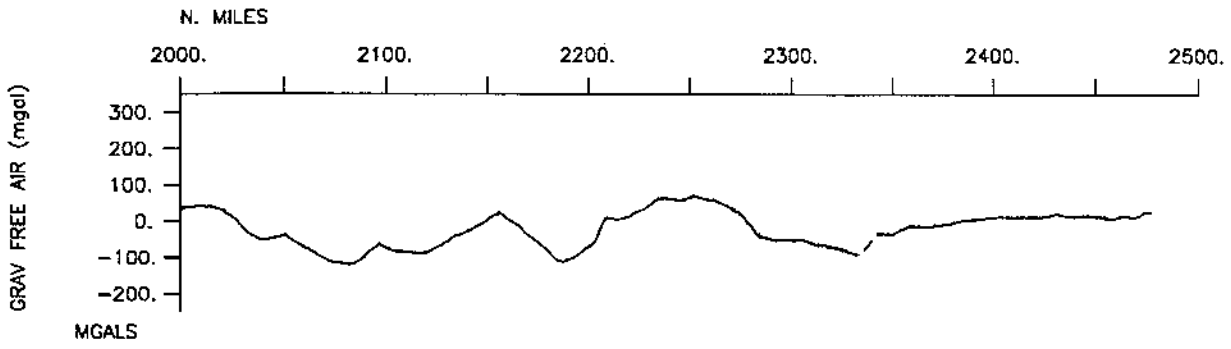


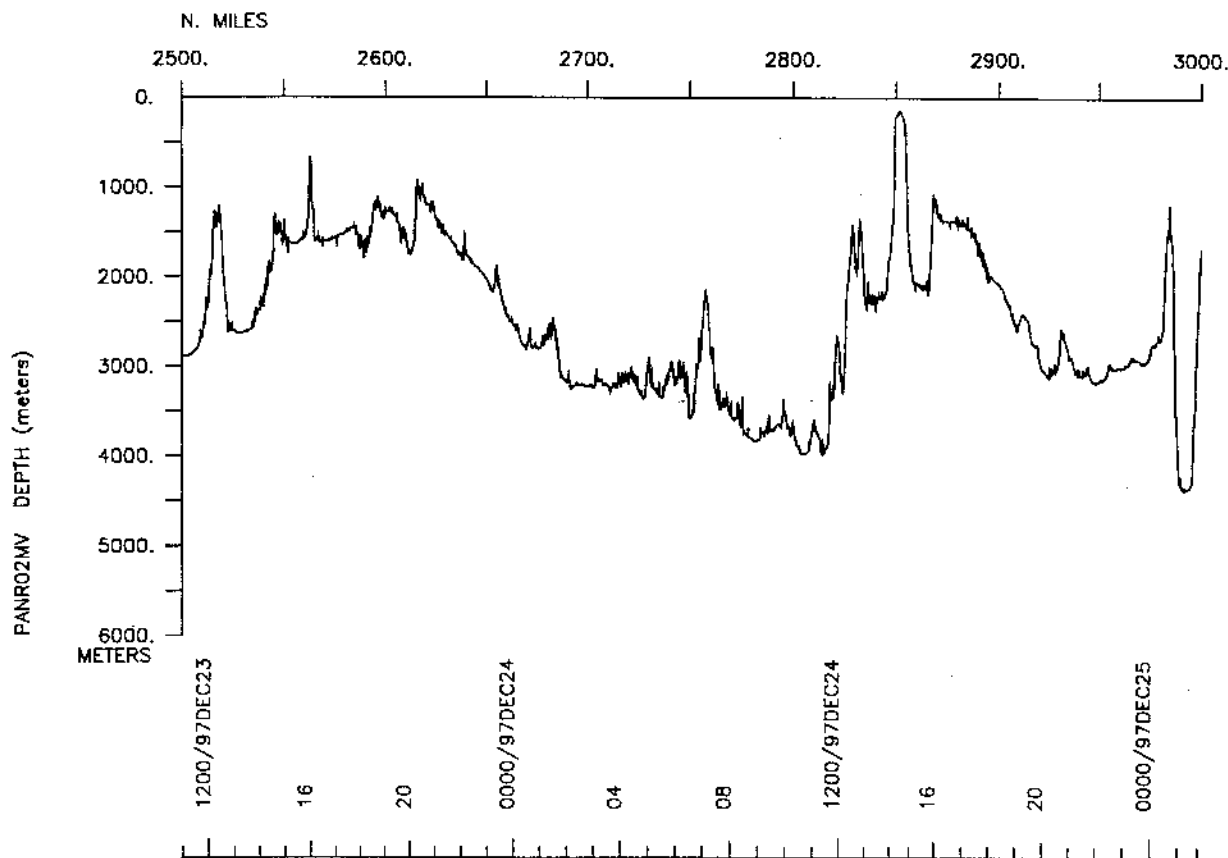
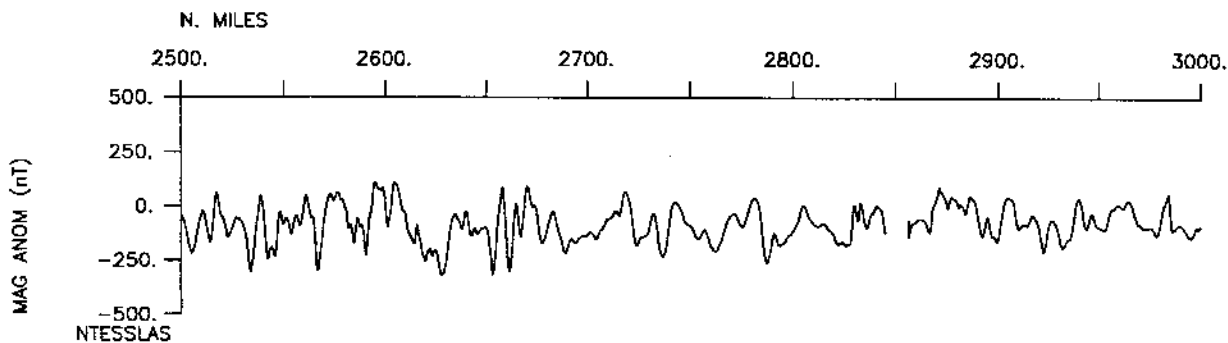
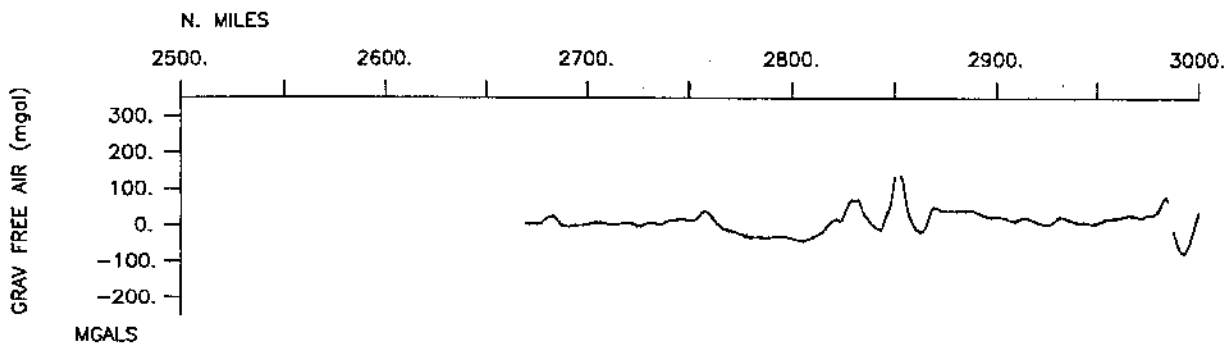


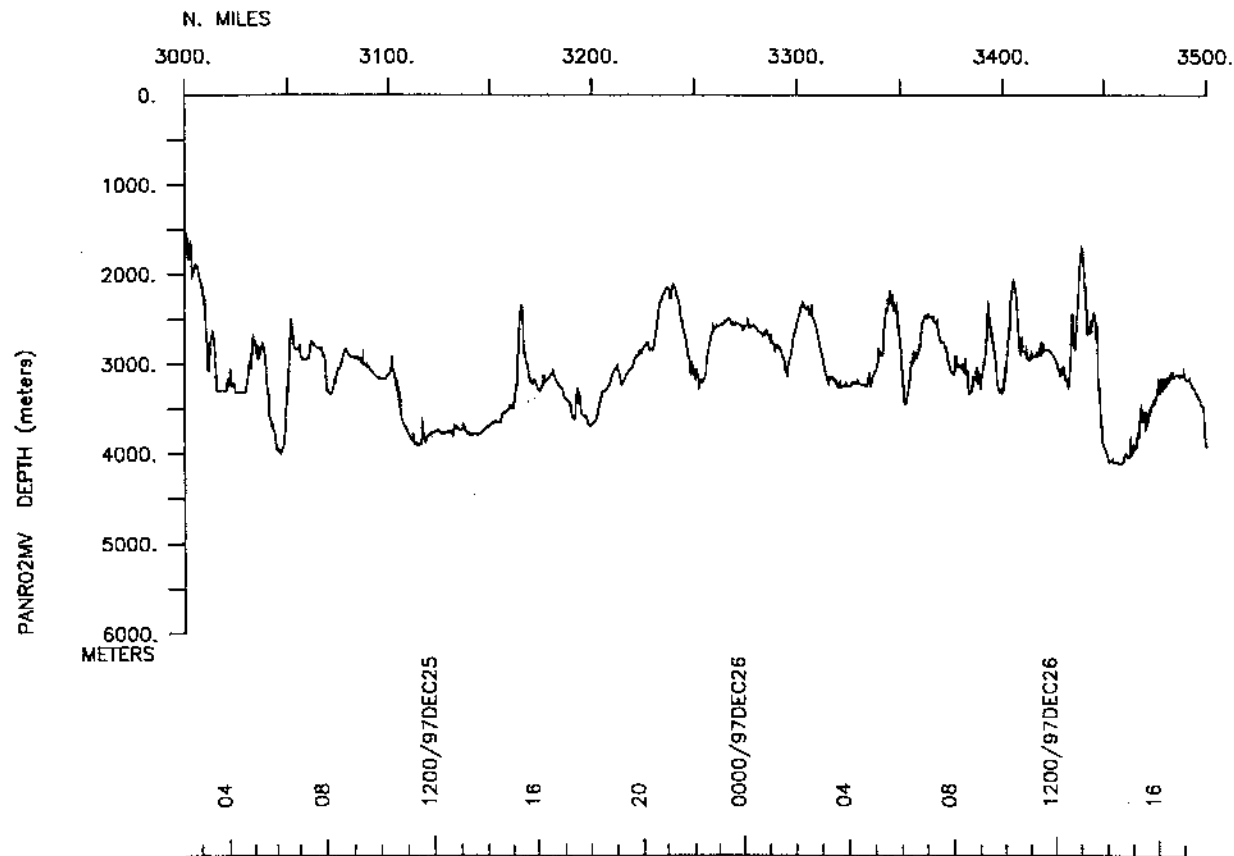
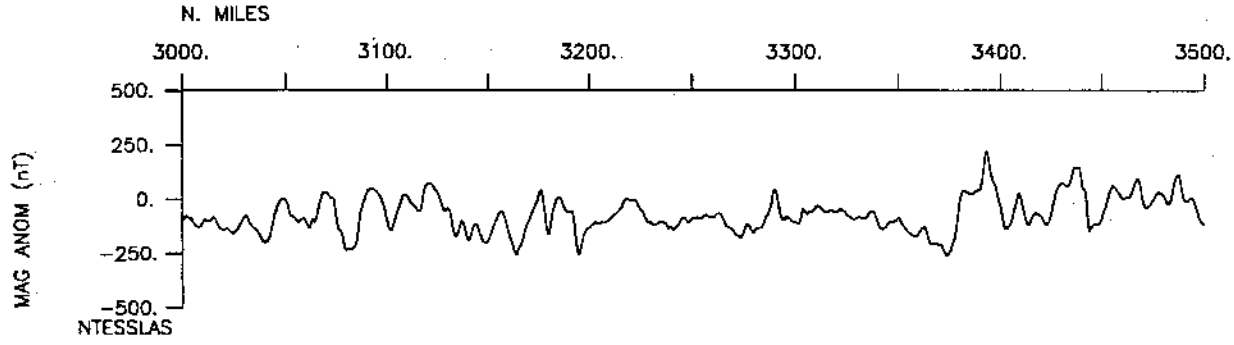
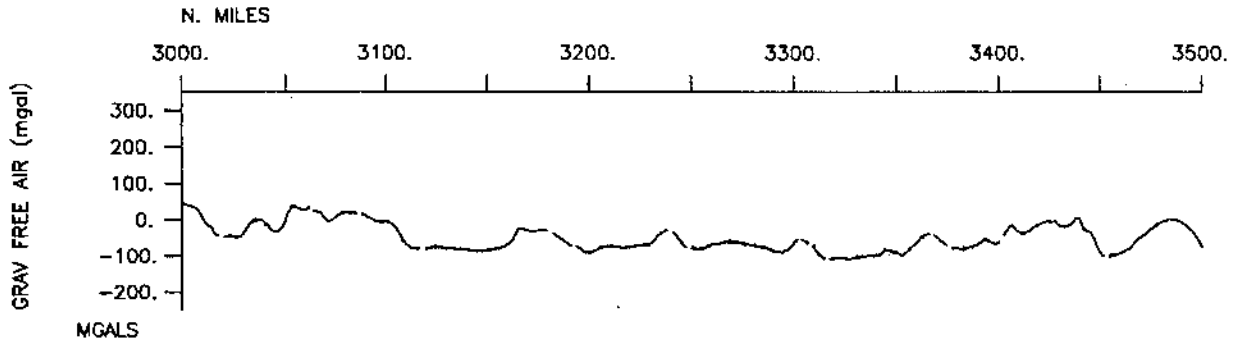


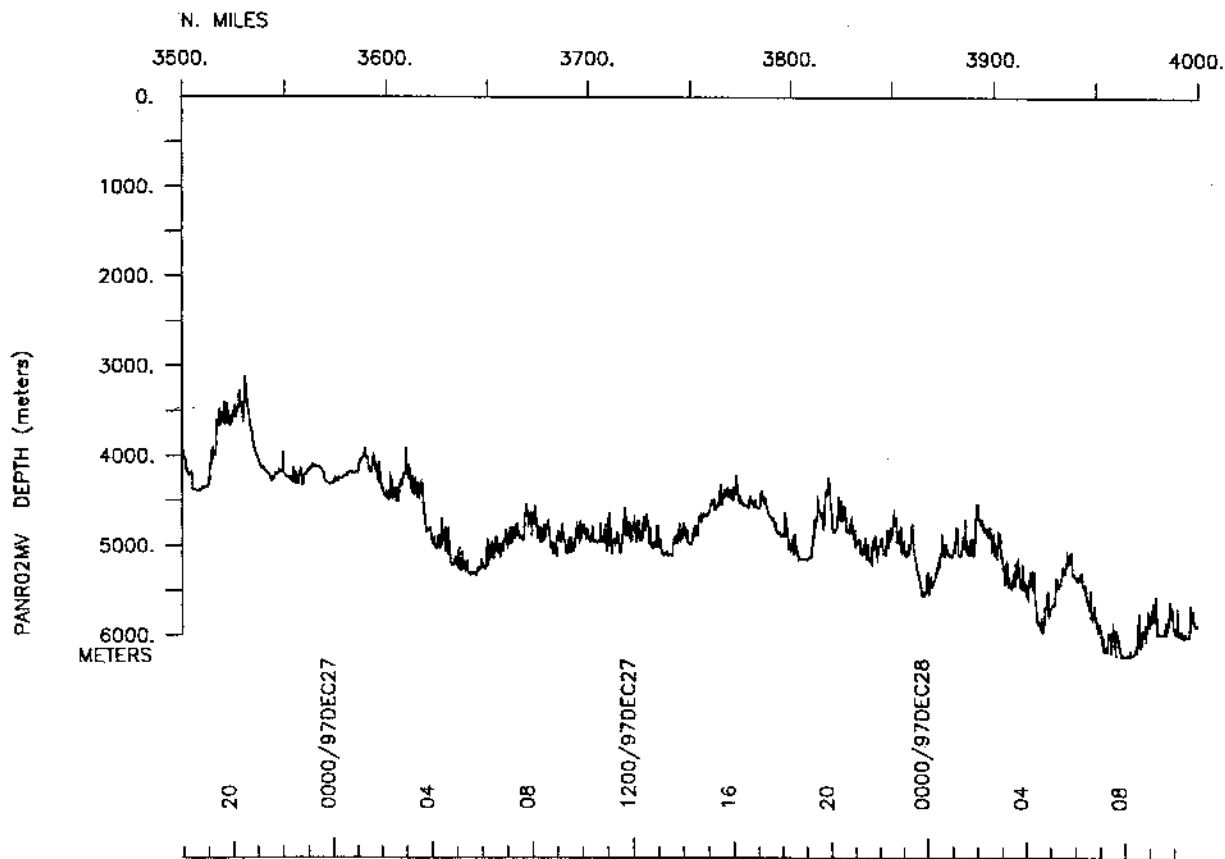
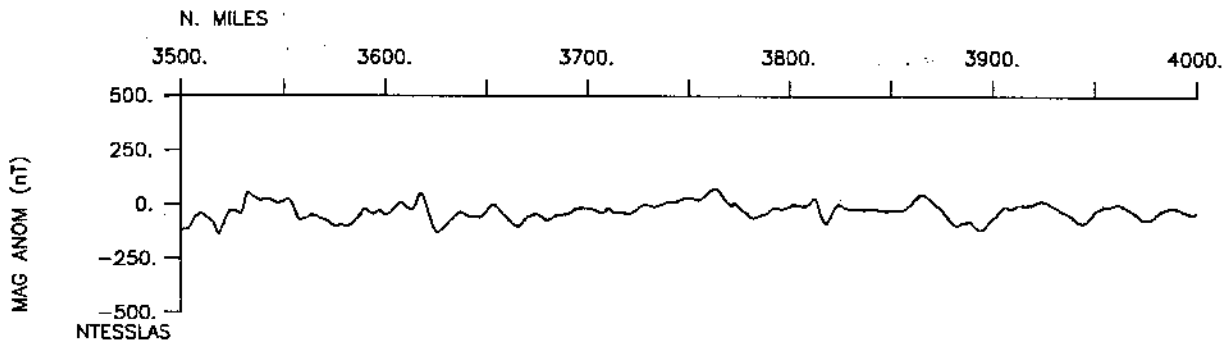
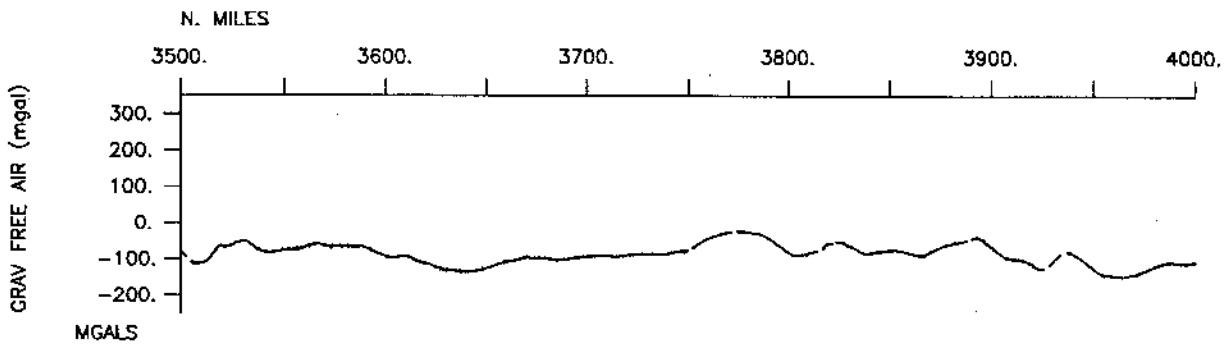




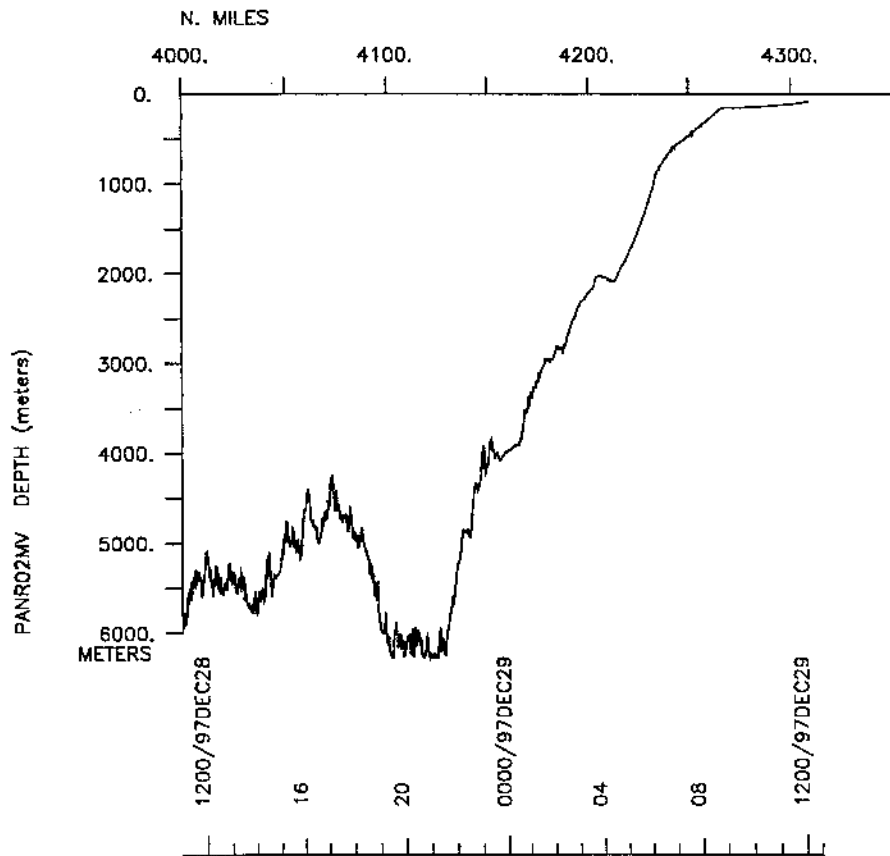
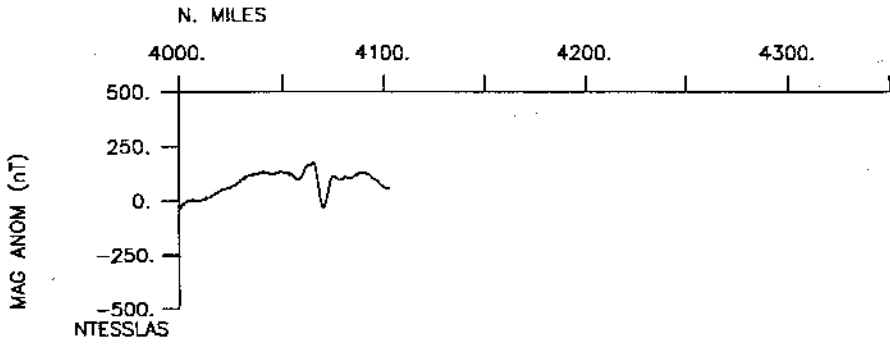
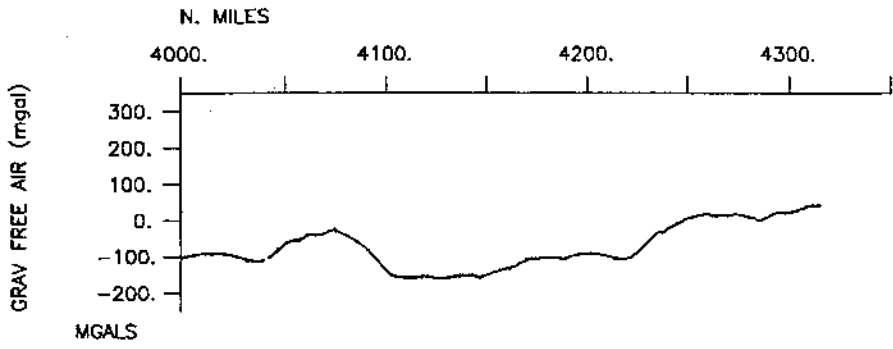








# PANR02MV



**S.I.O. SAMPLE INDEX**

**PANORAMA EXPEDITION**

**LEG 2**

**(PANR02MV)**

R/V Melville

(Issued May 1998)

**PORTS:**

Acapulco, Mexico (14 December 1997)

to

Callao, Peru (29 December 1997)

**Chief Scientist:**

Nancy Kanjorski (Scripps Institution)

Sample Index constructed by Ginny Wells, GDC

*The Sample Index is a first level interdisciplinary listing of time, position, sample identification and disposition of all samples, records and measurements collected on this cruise leg. The index data are encoded at sea by the resident marine technician and processed on shore by the S.I.O. Geological Data Center shortly after the completion of the cruise leg.*

*Positions are interpolated on the basis of sample time by comparison to a single, edited navigation file. Samples beginning at one time and position and ending at another are entered on two consecutive lines. Disposition and sample type are represented by three and four character codes to permit future computer searches on these parameters. (Listings defining these codes are available from the Geological Data Center.)*

GDC Cruise I.D.# 278



## \*\*\* Ports \*\*\*

2348	141297	LGPT B	Acapulco, Mexico	16-51.00N	99-56.00W	f	PANR02MV
1319	291297	LGPT E	Callao, Peru	12-03.00S	77-10.00W	f	PANR02MV

## \*\*\* Personnel \*\*\*

#	*****NAME*****	*****TITLE*****	*****AFFILIATION*****	**CRID**
PECS SIO	Kanjorski, Nancy	Chief Scientist	Scripps Institution	PANR02MV
PESP SIO	Bowers, Nancy	Scientist	Scripps Institution	PANR02MV
PESP SIX	Canales, Sandra T.	Observer	INETER, Nicaragua	PANR02MV
PECT SIO	Charters, Jim	Computer Tech	Scripps Institution	PANR02MV
PESP SIX	Hernandez, Maria I.	Observer	INVEMAR, Colombia	PANR02MV
PESP SIX	Portocarerra, Aldo	Observer	MEDE-PESCA, Nicaragua	PANR02MV
PESP SIX	Rojas, Paula	Observer	IDEAM, Colombia	PANR02MV
PESP SIO	Shaw, Allison	Scientist	Scripps Institution	PANR02MV

## \*\*\* NOTES \*\*\*

#An 'X' in the (B)egin/(E)nd column following the sample code indicates no #sample or data recovered. A 'C' indicates continuation of data collection #from before the beginning or after the end of a particular leg. (Moored #bottom instruments, for example.) The number appearing in the columns #between the sample identifier and the disposition code, for many sample #entries, is the water depth in corrected meters.

#GMT	D	M	M	Y	SAMP	B	SAMPLE	DISP		p	CRUISE
#TIME	DATE	TZ	CODE	E	IDENTIFIER	CODE	LATITUDE	LONGITUDE	c	LEG-SHIP	

\*\*\* Underway Data Curator - S. M. Smith ext. 42752 \*\*\*

## \*\*\* Log Books \*\*\*

2333	141297	0	LBUW B	Underway watch Log	GDC	16-36.99N	99-55.29W	g	PANR02MV
1208	291297	0	LBUW E	Underway watch log	GDC	12-02.26S	77-14.43W	g	PANR02MV

## \*\*\* Digital Magnetics (Earth Total Field) \*\*\*

2258	141297	0	MGRA B	Magnetics	GDC	16-43.98N	99-54.20W	g	PANR02MV
0039	291297	0	MGRA E	Magnetics	GDC	10-51.54S	79-16.90W	g	PANR02MV

## \*\*\* Digital Gravity \*\*\*

2248	141297	0	GVCR B	Gravity	GDC	16-46.00N	99-53.84W	g	PANR02MV
1319	291297	0	GVCR E	Gravity	GDC	12-03.27S	77-08.96W	g	PANR02MV

## \*\*\* Sea Beam Records (vertical beam and side scan) \*\*\*

2238	141297	0	MBSR B	v.beam&sscan r-01	GDC	16-48.05N	99-53.51W	g	PANR02MV
0257	261297	0	MBSR E	v.beam&sscan r-01	GDC	1-00.67S	81-24.41W	g	PANR02MV
0300	261297	0	MBSR B	v.beam&sscan r-02	GDC	1-00.96S	81-23.79W	g	PANR02MV
1203	291297	0	MBSR E	v.beam&sscan r-02	GDC	12-02.08S	77-15.44W	g	PANR02MV

## \*\*\* Echo Sounder Records \*\*\*

2238	141297	0	DPR3 B	Knudsen 3.5khz r-01	GDC	16-48.05N	99-53.51W	g	PANR02MV
1208	291297	0	DPR3 E	Knudsen 3.5khz r-01	GDC	12-02.26S	77-14.43W	g	PANR02MV

#

End Sample Index

PANR02MV