

Revellations

A Revelle College Publication - University of California, San Diego



In Brief

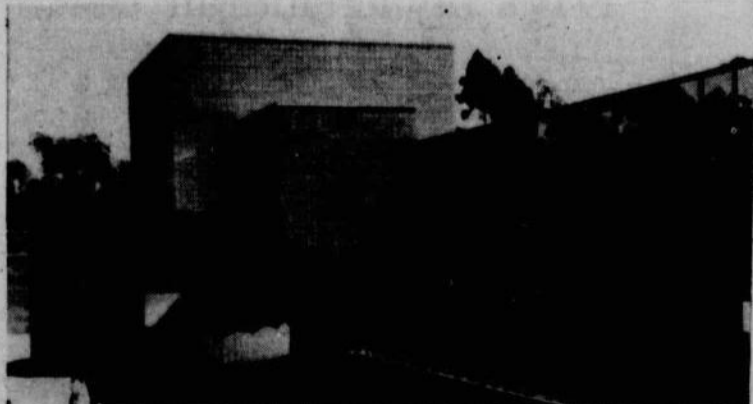
Applications now available for Revelle Dean's Interns! Paid positions are for chairs of the Commuter Advisory Board, Noon Program Board, Faculty-Student Program Board, and for Editor of *Revellations*. Pick up a job referral at the Career Services Center (pictured below) and pick up an application in the Revelle Dean's Office. Hurry, because applications are due *real* soon!

The Revelle Renaissance Faire swings into action this quarter, on April 30th! The Renaissance Faire Planning Committee will meet this Wednesday, April 12, at 4 p.m. in the Revelle Resident Dean's Conference Room. All are invited to attend!

Due to cases of vandalism last quarter, the Revelle Commuter Lounge will close at 7 p.m. Monday through Thursday, and at 4 p.m. on Friday. On behalf of the unknown vandals, the Dean's Intern staff apologizes for the inconvenience.

UCSD, SDSU, and USD are running this year's San Diego County Special Olympics Track and Field meet on Saturday, April 15. There are over 60 positions for judges alone, and 200 to 300 participating athletes will need buddies for the day. Transportation will be provided to San Diego High School that Saturday. Those who wish to be judges must attend a brief training session on Wednesday, April 12 at 7 p.m. in the War Memorial Building, 3325 Zoo Drive (North end of the zoo parking lot). For more information, contact The Volunteer Connection at 534-1414.

Are you interested in seeing how your professors live? In what happened to former students who graduated from UCSD? In a free, home cooked meal? Join other students, alumni, staff and faculty by signing up for GUESS WHO'S COMING TO DINNER? on Sunday, May 7th. UCSD Alumni and faculty members will be hosting a number of simultaneous dinners on that evening. Approximately 6 students will be invited to each dinner. Sign-up sheets for those students who would like to attend a dinner will be at MOM, EDNA, the Revelle Commuter Lounges, the College Deans' offices and the Resident Deans' offices. The sign-up deadline is April 11th. Sign up and bring a friend! If you need additional information, call the Alumni Office at 684-8900.



The Career Services Center, site of job referrals for Revelle Dean's Intern positions.



Brothers of Pi Kappa Phi invite pledges to join UCSD's first dry rush.

Bite into Health!

Classes, work, clubs, friends....just too busy to bother with your health? Well think again, it is your good health that keeps you going and enables you to do all those activities. And UCSD has the answer for you. The annual Health and Fitness Fair on Wednesday April 12 from 11am-2pm on Revelle Plaza. There will be over 20 assessment and information stations where you can stop and learn more about your health, fitness, habits and knowledge. To name a few, there will be body composition, nutrition, and stress checks, recreation, spirituality, sexual health, anemia screening, alcohol and drug information, sports injury prevention and skin cancer screening. Also karate, frisbee, aerobic dance and kung fu demonstrations from 11:30 to 1:30. And it's all free of course, including some healthy food from Green-tree Grocers!! So, "Bite into Health" on Wednesday, April 12, 11-2pm on Revelle Plaza!!

Inside: RCC Candidates Academics Breaking Up Quarterly Calendar

Vote!!
A.S. Elections
April 11-13

Dry Rush Hits Campus *Fraternities to Promote Non-Alcoholic Parties*

By Aimee Nielsen

Everyone knows the typical stereotype of a Greek, and who of us hasn't seen or at least heard about the film "Animal House?" Many of us identify Greeks with huge parties that get out of control, people who are so insecure that they must "buy their friends" and secret rituals that put initiates through embarrassing and sometimes even dangerous situations. But the fact is that Greek organizations have a side to them, a positive and selfless side, that is often overlooked.

The Dry Rush, sponsored in part by the Inter-Fraternity Council, is an example of the other side of Greeks. "Hell Week" has become "Help Week" at most major universities, and rushes are going dry. But as most Greeks will point out to you, this dry rush is not an attempt to make the Greek system "look good" for a week or so. Instead it is a recognition by the fraternities (for the sorority rushes have always been dry) that dry rushes promote membership that enhances the Greek system and separates those who want to commit to fraternity from those who want to party. The fraternities are also planning on sponsoring a Scholarship Cup which will recognize academic skills rather than social skills. Sororities and Fraternities alike are reaching back to the roots of their organization and emphasizing scholarship and philanthropy.

These events give students the chance to see the other side of the Greek system that is often overlooked. They provide social opportunities at schools that are academically oriented, and give people a chance to improve social skills that will become invaluable throughout their college years and beyond. At large universities, sororities and fraternities give students a chance to develop close and last-

ing friendships, and provide a sort of "home a way from home" where each member works to support and help other members in times of need and in times of success. Greeks recognize academic achievement, emphasize good study habits, and require that a certain GPA is maintained in order to remain in the sorority or fraternity. Greeks have philanthropy projects which support community need and national charities, and often include participation by the whole school, not just Greeks. And, like any other organization on campus, sororities and fraternities require money to make their programs possible, and this money comes from the fees that members must pay.

The Greek system here at UCSD is unique in that there is no housing at UCSD for Greeks. As a result, Greeks are still very much a part of campus life at UCSD and the exclusiveness that may found at other campuses is not as prevalent. Because of limited space that Greeks have, the system is small, casual and relaxed. Members get a chance to become close to one another and are not just another face in the crowd. Membership fees and dues are almost half those at other universities, because fraternities and sororities do not have to support the upkeep of a house or a large membership. Greeks at UCSD more often than not must make a special effort to make their system and social events work because of limited space.

The Greeks at UCSD are not doubt a high visibility group because they have Greek letters that show who they are. But we should stop seeing the negative things in those letters and start seeing some of the positive things. It can be good to be Greek.

UCSD Establishes Microscopy Center

The marriage of advanced electron microscope technology and the rapid computing capabilities of the supercomputer will soon allow researchers throughout the Southwest to better explore the structure and function of the cell. A regional center for computer-aided intermediate voltage transmission electron microscopy and three-dimensional image analysis will be established at the UCSD School of Medicine with a \$3.9 million Biotechnology Resource Grant from the National Institutes of Health.

The sophisticated intermediate voltage electron microscope (IVEM) will be linked to the Cray supercomputer at the San Diego Supercomputer Center on the UCSD campus, according to Mark Ellisman, Ph.D., professor of neurosciences at UCSD and director of the new Southwestern Regional IVEM and Image Analysis Resource.

"This microscope facility will allow investigators to obtain image information about biological materials in three dimensions and at a higher resolution than possible with any other tech-

nology," said Ellisman. "The relationship with the supercomputer gives us the potential for computer modeling of larger structures with greater speed and accuracy than previously possible.

"Our objective is to take existing technologies never before linked and put them together in a user friendly way to serve biologists throughout the region," he said.

The center will have five main components, Ellisman said: technology development, collaborative research, service to investigators, training and dissemination of information. A number of collaborative investigators are affiliated with the center. Researchers from UCSD, the Salk Institute, Scripps Clinic and Research Foundation and UC Irvine will be using the new facility for specific projects, primarily for studies of the structure and function of the nervous system.

The center will be based in newly renovated space in the Basic Science Building at the UCSD School of Medicine, and is expected to be operational in the fall of 1989.



David Kaplan Freshman

A general perception exists among students that the university's policies do not represent the needs or interests of the student population. This perception works to the detriment of both the college and the students because it inhibits cooperation and interaction between the two groups. I would like the RCC to work toward the destruction of the barriers to college unity by reinvigorating the sense of Revelle's mission at UCSD, and through serving greater student needs; greater input into disciplinary policies of the college, improvement of services from student organizations, and by guaranteeing the presence of a governing body that responds to needs that arise.



Meredith Knobler Sophomore

In RCC I would like to see activities at noon to one be moved into 12:30 to 1:30 so that students that have twelve o'clock class will be able to go to the activity as well. A big factor will be the new Price Center and the supposed "shift of campus". I think Revelle will have to program more activities during the weekdays to keep the crowd on the plaza. Also, we need to somehow revise the selection process for committee appointments to make it more efficient and enable more student involvement.



Eva Vadasy Junior

I believe that the most important priority of the RCC is to govern Revelle College in a way that creates a good atmosphere for students. This type of atmosphere can be created only through active participation and attention to student issues. Some of the important issues facing Revelle College next year will be the new student center, parking, student safety, resident programming and commuter-resident relations. I think that the student center will have an effect on student programming for Revelle College because the plaza will no longer be the focus. Also, there should be active collaboration and planning among all of the colleges in order to create more unity. I feel that the most important priority for the RCC is Revelle students.

1989-90 R C C Candidates

These nine students are running for positions on the Revelle College Council. Each candidate was asked to describe the priorities they would like to see the Revelle College Council establish, and their views on important issues affecting Revelle students.



Stephen Chow Senior, Incumbent

Should I be elected to RCC, I would make sure that RCC doesn't lose sight of what our main objective is, which is to further the interests of the Revelle College student. It is our responsibility as RCC members to act as the main liaison between the student body and the administration. I will do my best to make sure that the voice of Revelle College students is heard by and fairly represented to the administration.



Evan Weisenfeld Senior

My main concern for the upcoming year is Revelle's identity. The opening of the Price Center means that a lot of the activities on campus will be moving from Revelle Plaza. Also, a lot of the programming that Revelle does will now be competing against programming in the Price Center. I would like to see Revelle be the first college to really take advantage of everything the Price Center offers, but at the same time, maintain Revelle's identity. I would also like to see everyone more informed about the decisions that are made that will affect us in the future.



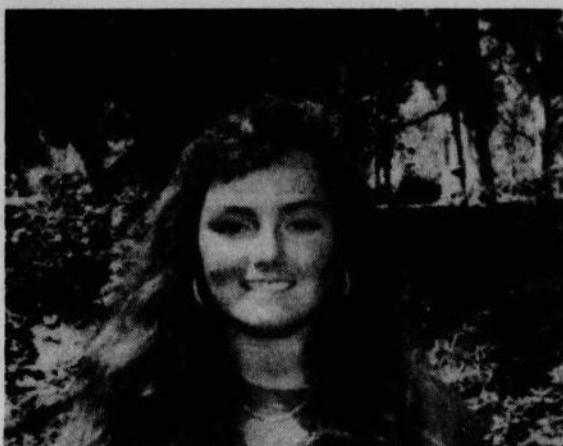
Les Bruvold Sophomore

In my two years at Revelle College, I have carefully observed and noted what fellow students want from their university. I feel that I understand which policies students most desire from student government. Because of this, I believe that I can capably represent the best interests of Revelle's student body in dealing with the administration. As a member of the Revelle College Council, I will make every effort to better shape Revelle's stringent academic requirements to the students' needs. Also, I will strive to make Revelle student life as socially stimulating as it is scholastically superior.



Armin Afsahi Senior, Incumbent

As an 88-89 RCC member, I have learned to understand the council and its role. Furthermore, I have become able to recognize its functions, responsibilities and my role within it. I have served on various leadership positions at Revelle: Dean's intern for two years, orientation leader, executive council to the Provost, and other campus-wide clubs and organizations. I have also undertaken projects on the council: appointments sub-committee, which appoints students to the revelle committees, and RCC awareness day. The council needs to set precedents for funds allocation, and implement a more effective communication medium, thus assessing student body needs.



Christy Hicks Junior

In order for RCC to accurately represent Revelle College, I think the council should strive to maintain an open line of communication between the student body and themselves, as the central governing committee at Revelle. From this input, RCC should respond to the student's needs and concerns accordingly.

It seems that the students at Revelle can be easily overwhelmed by all of the event programming that is done.

I think a more organized system of publicity and communication is necessary to effectively inform the students at Revelle of all of the activities and avoid misplaced efforts on programming during the same day or of the same type. In these cases, sponsoring groups should work together to insure a larger, undivided attendance.



Priya Jayachandran Sophomore, Incumbent

I believe that Revelle College Council should strive to improve Revelle College life. RCC is there to address student concerns and thus must be well aware of issues affecting fellow students. Therefore, communication with their peers should be of the highest priority for RCC.

However, communication with Revelle Students should surpass merely polling their views. Students college-wide must be informed not only of programmed events but also of the status of issues affecting them such as parking, registration, fees, new construction and other vitally important developments in both Revelle College and UCSD. As a continuing RCC member improving Revelle College through increased student involvement should be my top priority.

NPB Briefs

The Revelle College Noon Programming Board would like to welcome everyone back to school for the spring quarter! We hope that you're all relaxed and ready to enjoy some entertaining and exciting events on the plaza! We have a full quarter planned, including several bands, dance groups, and some large scale events. For example, we have planned a Spring Fashion show featuring all sorts of spring and summer attire (yes, including bathing suits!)... we will be needed student models, so if you're an aspiring model, keep your eyes open for upcoming announcements. We also have planned a "Fun in the Sun Faire" and a show featuring animals from the San Diego Wild Animal Park.

All of the events are included in the calendar section of this issue. However, due to past experience, sometimes dates may change due to the availability (or, actually, unavailability) of the performers. So please keep watching future issues of *Revellations*, as well as for posters, banners and fliers posted around campus. If you have any questions about the events, or have an idea for an event, please contact the Noon Programming Board Intern (Barbara) at 534-2519 most days between 10 a.m. and 1 p.m. See you on the plaza!!!!

Revellations Staff 1988-89

Editor-in-Chief Kevin T. Kelly
Assistant Editor Tanya McGraw
Photo Editor Daniel Massey
Copy Editor Jason Snell
Cartoonist Terry Ho
Writers Juan Bacalaki
Arthur Gu
Aimee Nielsen
Mary Ann Nogak
Jennifer Oyama
Ashlee Tanimoto
Todd Thorsen
Brian Lawenda
Susan Faulhaber
Photographers Fianna Muehnik
Rachael Crane
Brigitte Kanter
Linda Kung
Keiko Shiga
Deborah Yoo
Layout

Editor:

Letters to the Editor should be typed, double spaced, and delivered to *Revellations*, c/o the Revelle Dean's Office, B-021, La Jolla 92093.

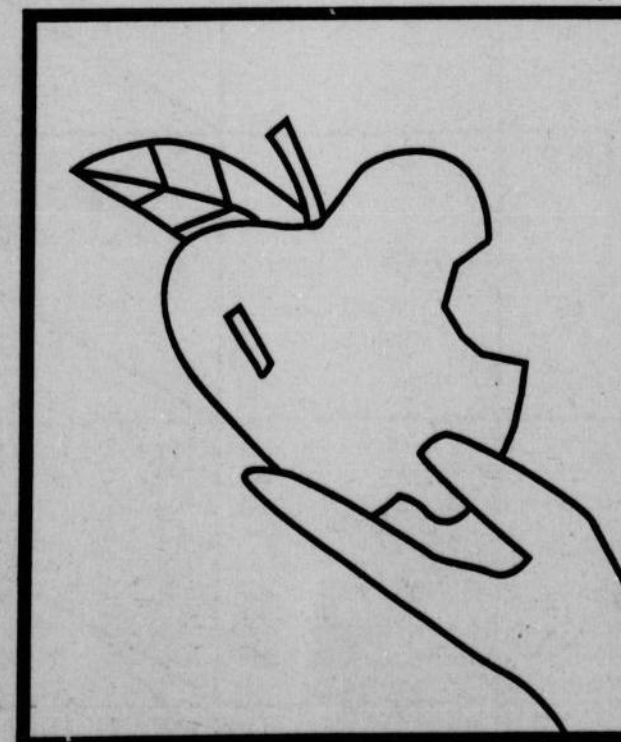
The views expressed herein are of the individual writers, and are not intended to represent the collective views of *Revellations*, the Revelle Dean's Office, or anyone else. Any reproduction, retransmission, or other use of the pictures, descriptions and accounts of this paper, without the expressed written consent of the Editor and your mother, is strictly prohibited. Any similarity to actual persons, living or dead, is purely coincidental. So there.

The Revelle
Commuter Lounge
will now close at
the following times:
Mon-Thu 7 p.m.
Fri 4 p.m.



UCSD Health & Fitness FAIR

Wednesday, April 12
11 a.m. to 2 p.m.



"Bite into Health"

Accent on Academics

THE MAJOR SHOWCASE

For those of you who are undecided or considering a change in major, this program is designed for you! Come to the final part of the "Identifying your major" workshops presented by the five colleges of UCSD. The MAJOR SHOWCASE will be presented by the Academic Counselors, Departments and Career Services. Majors will be reviewed as follows:

Humanities & Fine Arts
Thurs., Apr 13, HUL 1438, 4-6pm
Engineering
Mon., Apr 17, APM 2402, 4-6pm
Social Science
Tues., Apr 18, P&L 1110, 4-6pm
Biology
Wed., Apr 19, P&L 1110, 4-6pm
Chem, Math, Physics
Thurs., Apr 20, HUL 1438, 4-6pm

IMPORTANT DATES:

April 28, 1989- Final day to drop classes without "W" appearing on your transcript.

DECLARE YOURSELF!

If your transcript still reflects an "Undeclared Status" you may face unnecessary delays in enrollment for future classes. You need to declare your major course of study as soon as possible, especially if you have junior or senior status. We encourage you to make an appointment with an academic counselor to help you in your decision making process. Also, you may be interested in the Career Services workshop entitled "Identifying your career". This is an all day workshop to identify viable career options through extensive self-assessment.

ADD/DROP:

After submitting an add/drop card for any reason, Always request a class confirmation at the Registrars Office, and CHECK IMMEDIATELY to verify that the add/drop has been processed correctly.

GRADING OPTION:

When changing to/from a grade to a P/NP, you must first DROP THE COURSE THEN RE-ADD IT. You MAY NOT petition for a change of grading option after the second week of the quarter.

GRADUATING SENIORS, SU '89:

Make sure you submit a Degree and Diploma Application AS SOON AS POSSIBLE if you intend to complete graduation requirements during Summer, 1989. This will insure that your name is included in the spring graduation program.

PETITIONS:

Submission of a petition in no way guarantees its approval. Until you have been notified by the Provost's Office of the outcome, you should assume that your request has NOT been approved.

Don't forget to write your current address in the space indicated on the petition form. Without it, notification of this decision on your petition is delayed.

Summer Job Fair:

Scheduled for April 19, this event will bring over fifty employers to campus to talk to our students and, most importantly, offer them summer jobs. Students who are in the market should be advised to visit our Part-Time Employment Program to get the exact descriptions of the jobs that are available.

Liberal Arts Interviewing Week, April 24-28:

This year will be its best, since fifty employers will visit campus to interview liberal arts students for a wide range of career employment opportunities. Interested students should attend an Orientation to On-Campus Interviewing session early in the term to qualify for this unique program.

Breaking Up Not an End, But a New Beginning

By Tanya McGraw and Dr. Hugh Pates

Every good thing must come to an end, or so the saying goes. Relationships are no different. Some of them last forever, but even in these relationships there is an end. It may just be to a certain period, like the change from a casual relationship to a true commitment or just a settling after the relationship has matured and the thrill of the chase is gone. And, of course, there is the final break-up. That is what I am talking about.

In the end of a relationship, there is usually two parties, the "dumper" and the "dumpee" (not always, but usually). It is probably one of the hardest times for anyone because everyone knows that love isn't logical; it doesn't follow any rules that help to predict the outcome. Love is based on emotions, and when those emotions get hurt, it can make people act very different than they would normally. When people are hurt, they can say things they don't really mean and be on purposely cruel to hurt the other person back for making them hurt.

There are many reasons for the end of a relationship. The most traumatic is probably when there is a third party involved. Being cheated on hurts because it is a violation of that precious feeling of trust. It is always easy to get mad at your partner, but usually not beneficial if you are still in love with him/her and

want to keep the relationship, thus the brunt of the anger usually goes towards the "other man/women." Another reason for a break-up is when feeling change. When both people grow apart, the end usually isn't as traumatic, but is still sad because it is the end of a period in one's life and the end of a very close relationship. Of course there are variations and combinations of the above scenarios that can occur, but these seem to be by far the most common.

Now, I'm not saying any of this will be easy, but as a wise professor once told me, don't look at the end of a relationship as the end, but rather, as a new beginning. The relationship that you put your heart and soul into and just got it trampled into the ground can turn out to be to your advantage if you change your perspective. That isn't that I am suggesting you just pick yourself up and go out there in the dating world with all of these raw emotions, looking for something to fill the void, I am just saying, mourn a little, because it will help. How many people know friends who immediately became involved in another relationship immediately to fill that void and to receive love, just to experience more heartache because they became involved on the rebound. Don't deny your feelings, but look towards the future. Don't dwell in the past. And, even though I know this will sound corny and cliché, but time does heal all wounds.

3 APRIL	4	5	6	7 APB Block Party	8 9
10 Election Candidates Speakers Forum	11 RPB Trip to "The Price is Right" A.S. Elections	12 CAB Breakfast A.S. Elections	13 Health and Fitness Fair on the Plaza A.S. Elections	14 Tritonfest on Urey Lawn NPB Noon Concert and Penguins Yogurt	15 Renaissance Faire workshop 16
17 A.S. run-off candi- dates forum (if needed)	18	19	20 Passover	21 ICRHA Getaway Dance	22 HPA Beach BBQ A.S. Charity Ball at Price Center Language house trip to Tijuana Cultural Center, Bullfights, and Jai-Alai 23
24 Disabled Students Awareness Day on the Plaza	25	26 CAB Breakfast	27	28	29 UCSD Open House and Revelle Renais- sance Faire 30
1 MAY NPB presents UCSD Pep Band and free haircuts	2 CAB Padre night Celebrating Diversi- ty Week	3 CAB Dinner and movie night	4	5 Cinco de Mayo	6 All-campus com- muter softball tour- ney 7
8	9	10 CAB Breakfast NPB Fun in the Sun Fair	11	12 NPB presents San Diego Wild Animal Park Sun God Festival	13 CAB presents "Let's Tour San Diego" Mother's Day 14
15	16 Revelle Awards Ban- quet at Price Center	17 NPB Presents Bill Cosby in the Com- muter Lounge CAB Study Break - Dinner and Movie	18	19 NPB Spring Fling Fashion Show RPB Drive-In Movie	20 Revelle Leadership Retreat 21
22	23	24 CAB Breakfast NPB Bar/Bri Law School seminar	25	26 NPB noon concert and carne asada sale	27 CAB Padre night 28
29 Memorial Day holiday observed	30 Memorial Day CAB Renters Workshop	31 NPB Magic Show	1 JUNE	2 NPB Comedy Hour	3 ICRHA Comedy Night 4
5 Christy's 21st Birthday	6	7 CAB Breakfast Watermelon Queen Pageant	8	9 NPB Watermelon Drop w/ Cardiff Reefers	10 Senior Breakfast 11
12 Finals	13 Finals	14 Finals	15 Finals	16 Finals	17 Finals Sea World Graduation Party Father's Day GRADUATION 18