

*Report and Index of
Underway Marine geophysical Data*

Centennial

Leg 11

(CNTL11RR)

R/V Roger Revelle

(Issued May 2004)

Ports:

Honolulu, HI (18-Jun-03)

to

Honolulu, HI (22-Jun-03)

Chief Scientist: Tom Gregory
University of Hawaii
thomasg@hawaii.edu

Computer Tech - Barry Quiel
Resident Tech - Gene Pillard

Post-Cruise processing and report preparation by the
Shipboard Technical Support Group,
Scripps Institution of Oceanography
La Jolla, CA 92093-0223

Note: *This is an index of underway geophysical data edited and processed after the completion of the leg and is intended primarily for informal use within the institution. This document is not to be reproduced or distributed outside Scripps without prior approval of the chief scientist or Shipboard Technical Support, Scripps Institution of Oceanography, La Jolla, California 92093-0223*

STS Cruise ID#300

Report and Index of Navigation and Underway Geophysical Data

Contents:

Index Chart - give track of cruise leg, dates, ports.

Track Charts - annotated with dates and hour ticks.

Profiles - depth, magnetic and gravity free air anomaly vs. distance.

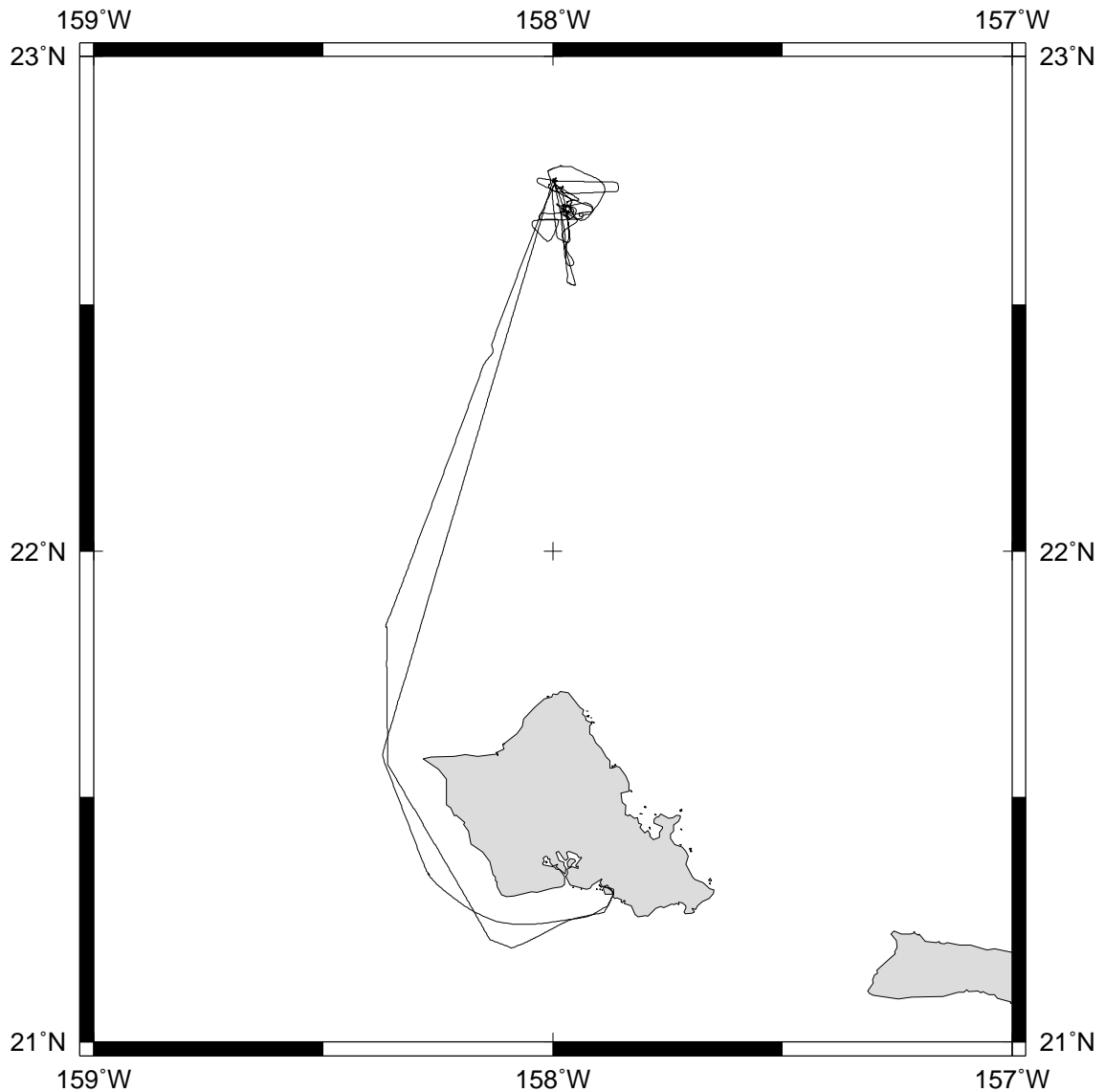
Sample Index - list of begin/end times and positions of all underway records as well as samples and measurements from other disciplines collected on the leg.

Note:

For information on the availability of this current digital data as well as archived digital data contact:

Stephen P. Miller
Geological Data Center
Scripps Institution of Oceanography
La Jolla, California 92093-0220
Phone: (858) 534-1898
Internet email: spmiller@ucsd.edu; or his website: <http://SIOExplorer@ucsd.edu>

Rev 05/2002



CENTENNIAL EXPEDITION LEG 11 (CNTL11RR)

=====

CHIEF SCIENTIST: Tom Gregory, University of Hawaii

PORTS: Honolulu - Honolulu, Hawaii

DATES: 18 - 22 June 2003

SHIP: R/V Revelle

TOTAL MILEAGE OF UNDERWAY DATA COLLECTED

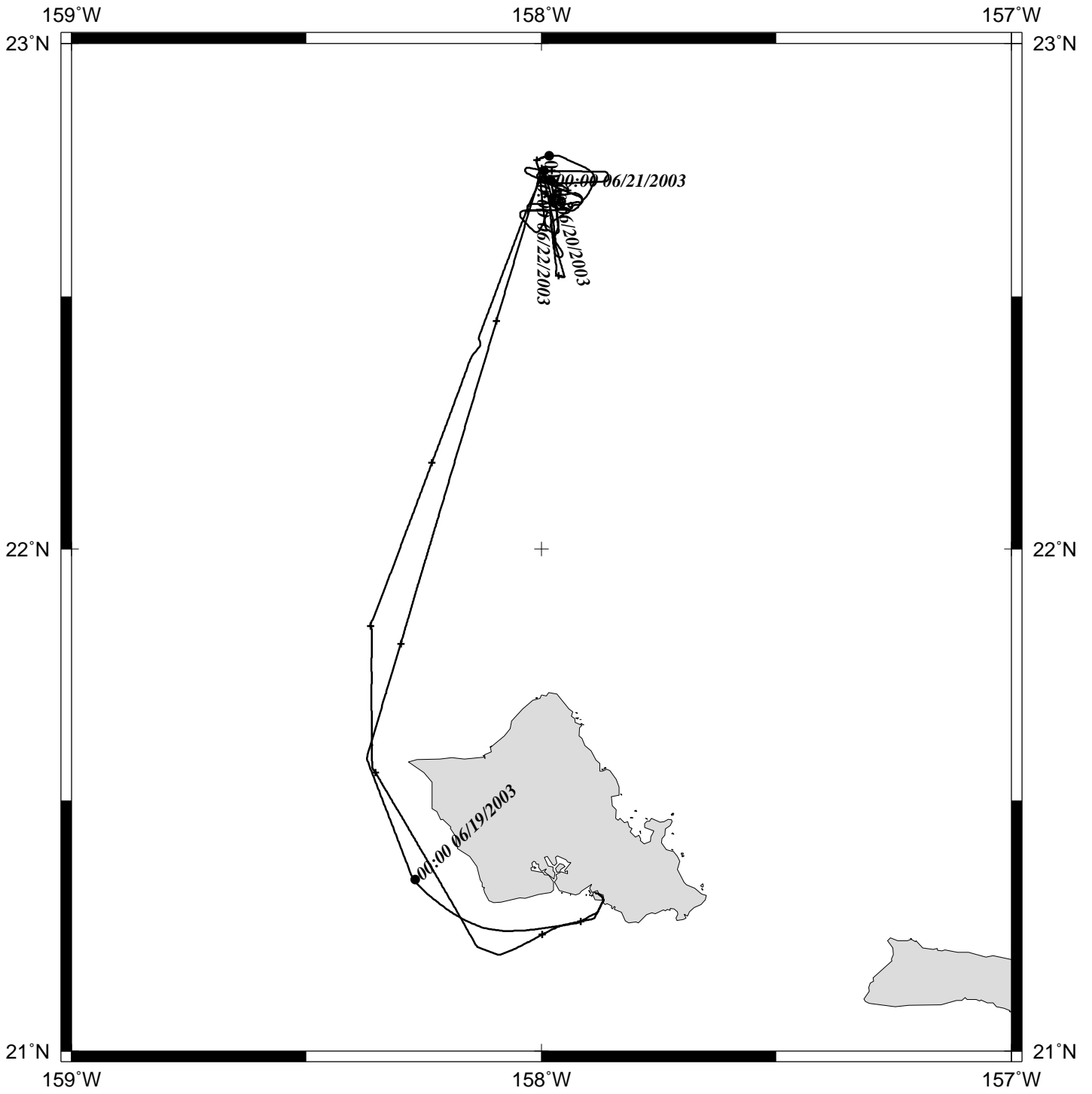
Cruise-400 miles

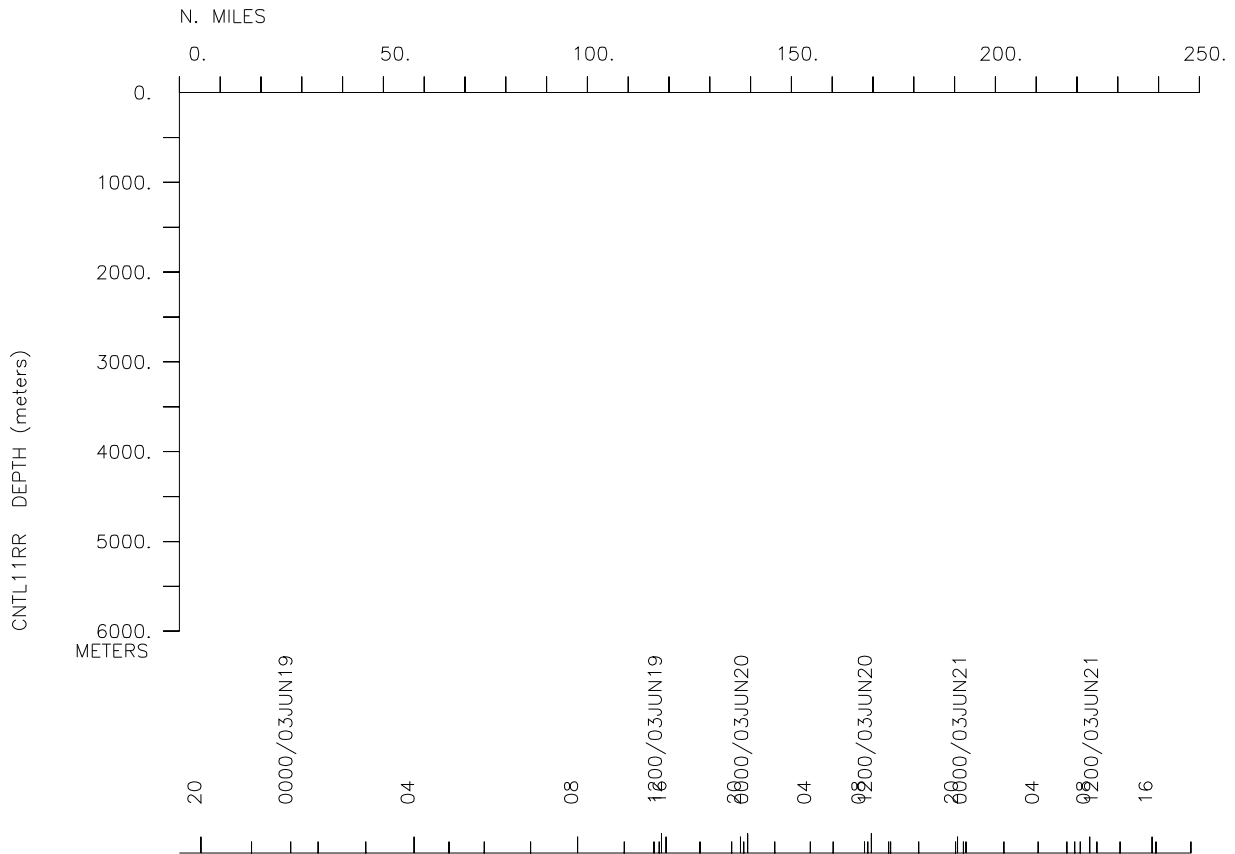
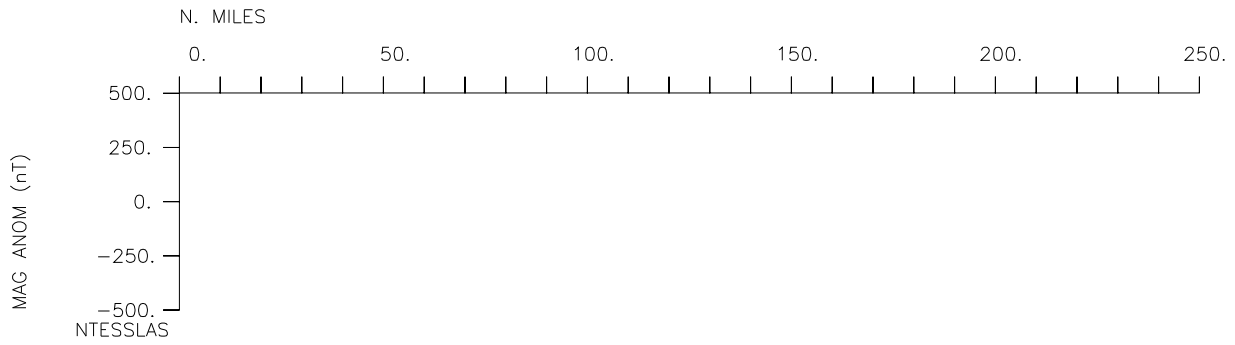
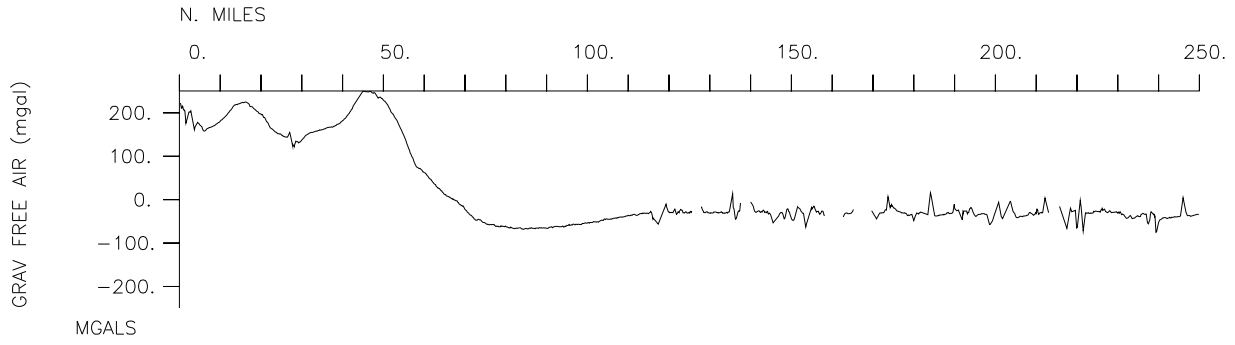
Magnetics-none collected

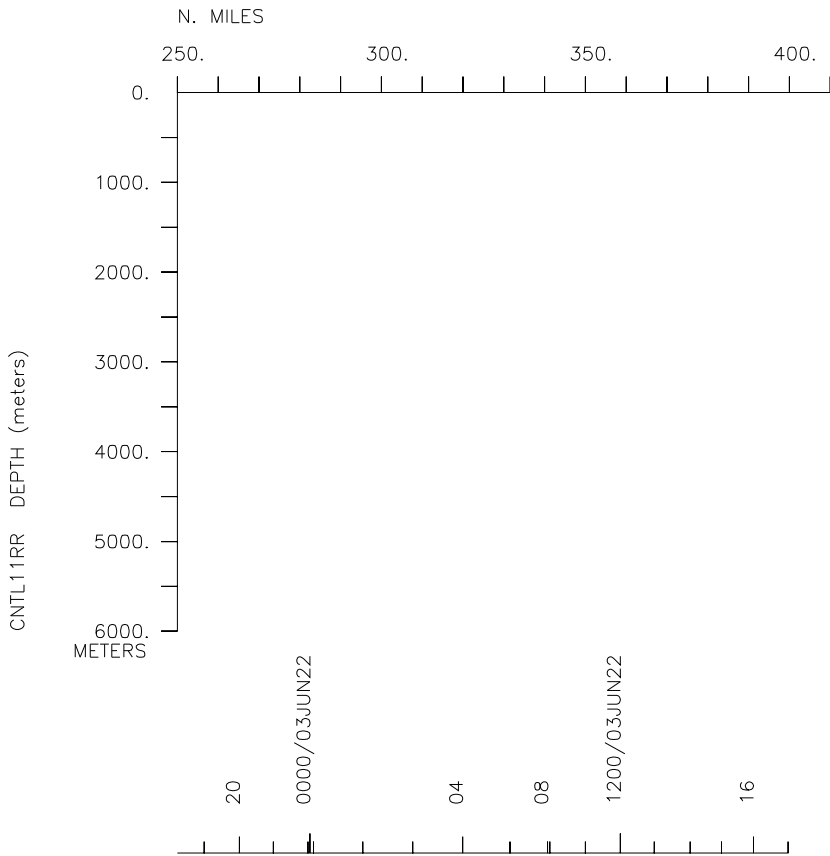
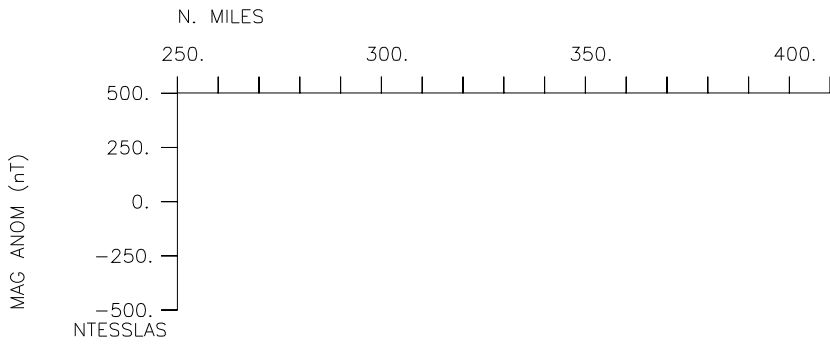
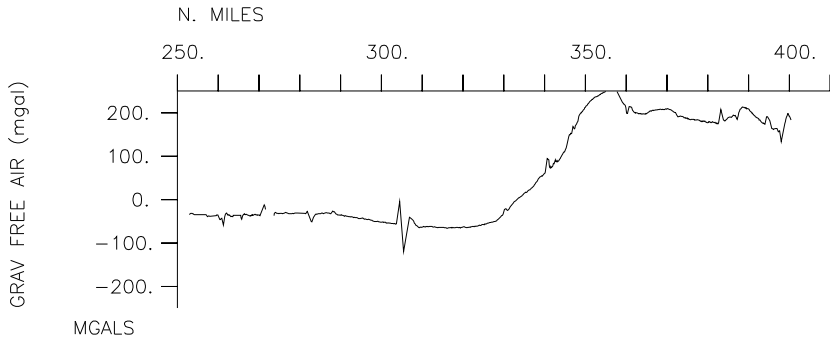
Bathymetry-none collected Seismic Reflection-none collected

Multibeam-none collected Gravity-400 miles

CNTL11RR







**** Ports ***

1912 180603 0 LGPT B Honolulu,Hawaii 21-18.96N 157-53.17W g CNTL11RR
 1730 220603 0 LGPT E Honolulu,Hawaii 21-18.70N 157-52.55W g CNTL11RR

**** Personnel ***

#	*****NAME*****	*****TITLE*****	*****AFFILIATION*****	**CRID**
PECS UHI	Gregory,T.	Chief Scientist	Univ. of Hawaii	CNTL11RR
PEST UHI	Andrionis,S.	Grad Student	Univ. of Hawaii	CNTL11RR
PEST UHI	Bishop,J.	Grad Student	Univ. of Hawaii	CNTL11RR
PEST UHI	Bjorkman,K.	Grad Student	Univ. of Hawaii	CNTL11RR
PESP UHI	Dafner,E.	Scientist	Univ. of Hawaii	CNTL11RR
PESP UHI	Fitzgerald,D.	Scientist	Univ. of Hawaii	CNTL11RR
PESP UHI	Fujieki,L.	Technician	Univ. of Hawaii	CNTL11RR
PESP UHI	Grabowski,E.	Scientist	Univ. of Hawaii	CNTL11RR
PESP UHI	Helmreich,S.	Scientist	Univ. of Hawaii	CNTL11RR
PEST UHI	Iriondo,M.	Grad Student	Univ. of Hawaii	CNTL11RR
PEST UHI	Kime,K.	Grad Student	Univ. of Hawaii	CNTL11RR
PEST UHI	Kline,J.	Grad Student	Univ. of Hawaii	CNTL11RR
PEST UHI	Most,R.	Grad Student	Univ. of Hawaii	CNTL11RR
PERT STS	Pillard,E.	Resident Tech	Scripps Institution	CNTL11RR
PECT STS	Quiel,B.	Computer Tech	Scripps Institution	CNTL11RR
PERT STS	Ravenhill,G.	Resident Tech	Scripps Institution	CNTL11RR
PESP UHI	Rii,S.	Scientist	Univ. of Hawaii	CNTL11RR
PESP UHI	Sadler,D.	Technician	Univ. of Hawaii	CNTL11RR
PESP UHI	Santiagomandujano,F.	Scientist	Univ. of Hawaii	CNTL11RR
PEST UHI	Sshlappa,K.	Grad Student	Univ. of Hawaii	CNTL11RR
PEST UHI	Sheridan,C.	Grad Student	Univ. of Hawaii	CNTL11RR
PEST UHI	Valenciano,M.	Technician	Univ. of Hawaii	CNTL11RR

**** NOTES ***

#An 'X' in the (B)egin/(E)nd column following the sample code indicates no
 #sample or data recovered. A 'C' indicates continuation of data collection
 #from before the beginning or after the end of a particular leg, (moored
 #bottom instruments, for example.) The number appearing in the columns
 #between the sample identifier and the disposition code, for many sample
 #entries, is the water depth in corrected meters.

#GMT DDMMYY	SAMP B	SAMPLE	DISP	p	CRUISE
#TIME DATE	TZ	CODE E	IDENTIFIER	CODE	LATITUDE LONGITUDE c LEG-SHIP
#-----	---	-----	-----	-----	-----

**** Underway Data Curator - Shipboard Technical Support Group ext.41899 ***
 **** Digital Data Curator - Geological Data Center, S.P. Miller, ext.41898 ***

**** MultiBeam Data (vertical beam and side scan) ***
 **** No multibeam data collected ***

**** Digital Gravity ***

1912 180603 0 GVDD B Digital gravity GDC 21-18.96N 157-53.17W g CNTL11RR
 1700 220603 0 GVDD E Digital gravity GDC 21-17.67N 157-52.30W g CNTL11RR

**** Acoustic Doppler Current Profiler ***

1912 180603 0 ADCP B Current measurements GDC 21-18.96N 157-53.17W g CNTL11RR
 1700 220603 0 ADCP E Current measurements GDC 21-17.67N 157-52.30W g CNTL11RR

#GMT	DDMMYY	SAMP	B	SAMPLE	DISP				p	CRUISE
#TIME	DATE	TZ	CODE	E IDENTIFIER	CODE	LATITUDE	LONGITUDE		c	LEG-SHIP
#-----	---	-----	-----	-----	-----	-----	-----	-----	-----	-----
#*** Temperature, Conductivity, Depth ***										
0000	190603	0	TDCT	B Cast S1C1 < ,=24 btls	UHI	21-20.52N	158-16.13W	g		CNTL11RR
0109	190603	0	TDCT	E TSONIC D PQ 1015m	UHI	21-20.51N	158-16.14W	g		CNTL11RR
1216	190603	0	TDCT	B Cast S2C1 < ,=24 btls	UHI	22-44.94N	157-59.54W	g		CNTL11RR
1541	190603	0	TDCT	E TSONIC D PQ 4772m	UHI	22-44.94N	157-59.54W	g		CNTL11RR
1814	190603	0	TDCT	B Cast S2C2 < ,=24 btls	UHI	22-44.49N	158-00.50W	g		CNTL11RR
1922	190603	0	TDCT	E 1015m	UHI	22-44.49N	158-00.50W	g		CNTL11RR
2104	190603	0	TDCT	B Cast S2C3 < ,=24 btls	UHI	22-46.49N	157-59.89W	g		CNTL11RR
2159	190603	0	TDCT	E TSONIC D PQ	UHI	22-46.49N	157-59.89W	g		CNTL11RR
0009	200603	0	TDCT	E Cast S2C4 < ,=24 btls	UHI	22-46.73N	157-59.00W	g		CNTL11RR
0103	200603	0	TDCT	E TSONIC D PQ 1020m	UHI	22-46.73N	157-59.00W	g		CNTL11RR
0305	200603	0	TDCT	B Cast S2C5 < ,=24 btls	UHI	22-42.18N	157-59.47W	g		CNTL11RR
0400	200603	0	TDCT	E TSONIC D PQ	UHI	22-42.18N	157-59.46W	g		CNTL11RR
0606	200603	0	TDCT	B Cast S2C6 < ,=24 btls	UHI	22-42.42N	157-58.15W	g		CNTL11RR
0703	200603	0	TDCT	E TSONIC D PQ	UHI	22-42.42N	157-58.15W	g		CNTL11RR
0903	200603	0	TDCT	B Cast S2C7 < ,=24 btls	UHI	22-42.63N	157-57.48W	g		CNTL11RR
1000	200603	0	TDCT	E TSONIC D PQ	UHI	22-42.63N	157-57.48W	g		CNTL11RR
1150	200603	0	TDCT	B Cast S2C8 < ,=24 btls	UHI	22-42.61N	157-56.67W	g		CNTL11RR
1255	200603	0	TDCT	E TSONIC D PQ 1016m	UHI	22-42.61N	157-56.67W	g		CNTL11RR
1511	200603	0	TDCT	B Cast S2C9 < ,=24 btls	UHI	22-44.89N	157-59.65W	g		CNTL11RR
1602	200603	0	TDCT	E TSONIC D PQ 1015m	UHI	22-44.87N	157-59.67W	g		CNTL11RR
1806	200603	0	TDCT	B Cast S2C10 < ,=24 btls	UHI	22-44.30N	157-59.65W	g		CNTL11RR
1902	200603	0	TDCT	E TSONIC D PQ	UHI	22-44.30N	157-59.65W	g		CNTL11RR
2110	200603	0	TDCT	B Cast S2C11 < ,=24 btls	UHI	22-43.75N	157-58.99W	g		CNTL11RR
2158	200603	0	TDCT	E TSONIC D PQ	UHI	22-43.75N	157-58.98W	g		CNTL11RR
0000	210603	0	TDCT	B Cast S2C12 < ,=24 btls	UHI	22-43.72N	157-58.80W	g		CNTL11RR
0053	210603	0	TDCT	E TSONIC D PQ 1015m	UHI	22-43.72N	157-58.80W	g		CNTL11RR
0306	210603	0	TDCT	B Cast S2C13 < ,=24 btls	UHI	22-42.12N	157-58.52W	g		CNTL11RR
0400	210603	0	TDCT	E TSONIC D PQ	UHI	22-42.12N	157-58.52W	g		CNTL11RR
0636	210603	0	TDCT	B Cast S2C14	UHI	22-42.21N	157-57.68W	g		CNTL11RR
0733	210603	0	TDCT	E TSONIC D PQ	UHI	22-42.21N	157-57.68W	g		CNTL11RR
0903	210603	0	TDCT	B Cast S2C15 < ,=24 btls	UHI	22-45.20N	157-59.95W	g		CNTL11RR
1204	210603	0	TDCT	E TSONIC D PQ 4729m	UHI	22-45.19N	157-59.95W	g		CNTL11RR
0609	220603	0	TDCT	B Cast S6C16 < ,=24 btls	UHI	21-50.81N	158-21.80W	g		CNTL11RR
0744	220603	0	TDCT	E TSONIC D PQ	UHI	21-50.81N	158-21.80W	g		CNTL11RR

#GMT	DDMMYY	SAMP	B	SAMPLE	DISP				p	CRUISE
#TIME	DATE	TZ	CODE	E IDENTIFIER	CODE	LATITUDE	LONGITUDE		c	LEG-SHIP
#-----	--	-----	-----	-----	-----	-----	-----	-----	-	-----
*** Self Contained CTDs with Transmissometer ***										
2245	200603	0	TDSC	B AC9/FRRF	UHI	22-43.72N	157-58.80W	g		CNTL11RR
2341	200603	0	TDSC	E pres.sens.trans.250m	UHI	22-43.72N	157-58.80W	g		CNTL11RR
1305	210603	0	TDSC	B AC9/FRRF	UHI	22-45.19N	157-59.95W	g		CNTL11RR
1419	210603	0	TDSC	E pres.sens.trans.300m	UHI	22-45.19N	157-59.95W	g		CNTL11RR
2251	210603	0	TDSC	B AC9/FRRF	UHI	22-44.96N	157-59.69W	g		CNTL11RR
2349	210603	0	TDSC	E pres.sens.trans.250m	UHI	22-44.96N	157-59.69W	g		CNTL11RR
2351	210603	0	TDSC	B AC9/FRRF	UHI	22-44.96N	157-59.69W	g		CNTL11RR
0047	220603	0	TDSC	E pres.sens.trans.250m	UHI	22-44.96N	157-59.69W	g		CNTL11RR
*** Open Net Vertical Tow ***										
1018	190603	0	ONVT	B Net tow	UHI	22-45.02N	158-00.05W	g		CNTL11RR
1046	190603	0	ONVT	E 64 & 202 um	170m UHI	22-45.28N	157-59.64W	g		CNTL11RR
2011	190603	0	ONVT	B Net tow	UHI	22-46.22N	158-00.54W	g		CNTL11RR
2047	190603	0	ONVT	E 64 & 202 um	170m UHI	22-46.49N	157-59.89W	g		CNTL11RR
2304	190603	0	ONVT	E to	UHI	22-46.51N	157-59.83W	g		CNTL11RR
2338	190603	0	ONVT	E 64 & 202 um	170m UHI	22-46.73N	157-59.01W	g		CNTL11RR
0814	200603	0	ONVT	B Net tow	UHI	22-42.49N	157-57.91W	g		CNTL11RR
0846	200603	0	ONVT	E 64 & 202 um	170m UHI	22-42.63N	157-57.48W	g		CNTL11RR
1100	200603	0	ONVT	B Net tow	UHI	22-42.61N	157-57.35W	g		CNTL11RR
1136	200603	0	ONVT	E 64 & 202 um	170m UHI	22-42.62N	157-56.69W	g		CNTL11RR
2006	200603	0	ONVT	B Net tow	UHI	22-43.96N	157-59.53W	g		CNTL11RR
2046	200603	0	ONVT	E 64 & 202 um	170m UHI	22-44.28N	157-58.70W	g		CNTL11RR
*** Submerged Photometers ***										
2232	180603	0	PSXX	B Profiling reflect-	UHI	21-20.59N	158-16.37W	g		CNTL11RR
2248	180603	0	PSXX	E ance radiometer 200m	UHI	21-20.55N	158-16.26W	g		CNTL11RR
2232	180603	0	PSXX	B TSRB	UHI	21-20.59N	158-16.37W	g		CNTL11RR
2257	180603	0	PSXX	E Radiometric bouy	UHI	21-20.53N	158-16.14W	g		CNTL11RR
2206	200603	0	PSXX	B TSRB	UHI	22-43.75N	157-58.98W	g		CNTL11RR
2228	200603	0	PSXX	E Radiometric bouy	UHI	22-43.71N	157-58.74W	g		CNTL11RR
2212	200603	0	PSXX	B Profiling reflect-	UHI	22-43.75N	157-58.98W	g		CNTL11RR
2223	200603	0	PSXX	E ance radiometer 200m	UHI	22-43.72N	157-58.84W	g		CNTL11RR
2207	210603	0	PSXX	B TSRB	UHI	22-45.00N	158-00.00W	g		CNTL11RR
2229	210603	0	PSXX	E Radiometric bouy	UHI	22-44.96N	157-59.70W	g		CNTL11RR
1212	210603	0	PSXX	B Profiling reflect-	UHI	22-45.20N	157-59.95W	g		CNTL11RR
2223	210603	0	PSXX	E ance radiometer 200m	UHI	22-44.98N	157-59.79W	g		CNTL11RR
*** Sediment Trap ***										
1151	190603	0	SDTR	Sediment Trap	UHI	22-44.95N	157-59.69W	g		CNTL11RR
*** Primary Productivity ***										
1445	200603	0	PHIS	Primary Productivity	UHI	22-44.92N	157-59.93W	g		CNTL11RR

End Sample Index

CNTL11RR