

*Report and Index of
Underway Marine Geophysical Data*

Vancouver Expedition

Leg 20

(VANC20MV)

R/V Melville

(Issued Apr 2004)

Ports:

Port Moresby, PNG (13-Jan-04)

to

Port Moresby, PNG (25-Jan-04)

Chief Scientist: C. Nittrouer
Univ. of Washington
nittroue@ocean.washington.edu

Computer Tech - Steve Foley
Resident Tech - Geoff Ravenhill

Post-Cruise processing and report preparation by the
Shipboard Technical Support Group,
Scripps Institution of Oceanography
La Jolla, CA 92093-0223

Note: *This is an index of underway geophysical data edited and processed after the completion of the leg and is intended primarily for informal use within the institution. This document is not to be reproduced or distributed outside Scripps without prior approval of the chief scientist or Shipboard Technical Support, Scripps Institution of Oceanography, La Jolla, California 92093-0223*

STS Cruise ID#299

Report and Index of Navigation and Underway Geophysical Data

Contents:

Index Chart - give track of cruise leg, dates, ports.

Track Charts - annotated with dates and hour ticks.

Profiles - depth, magnetic and gravity free air anomaly vs. distance.

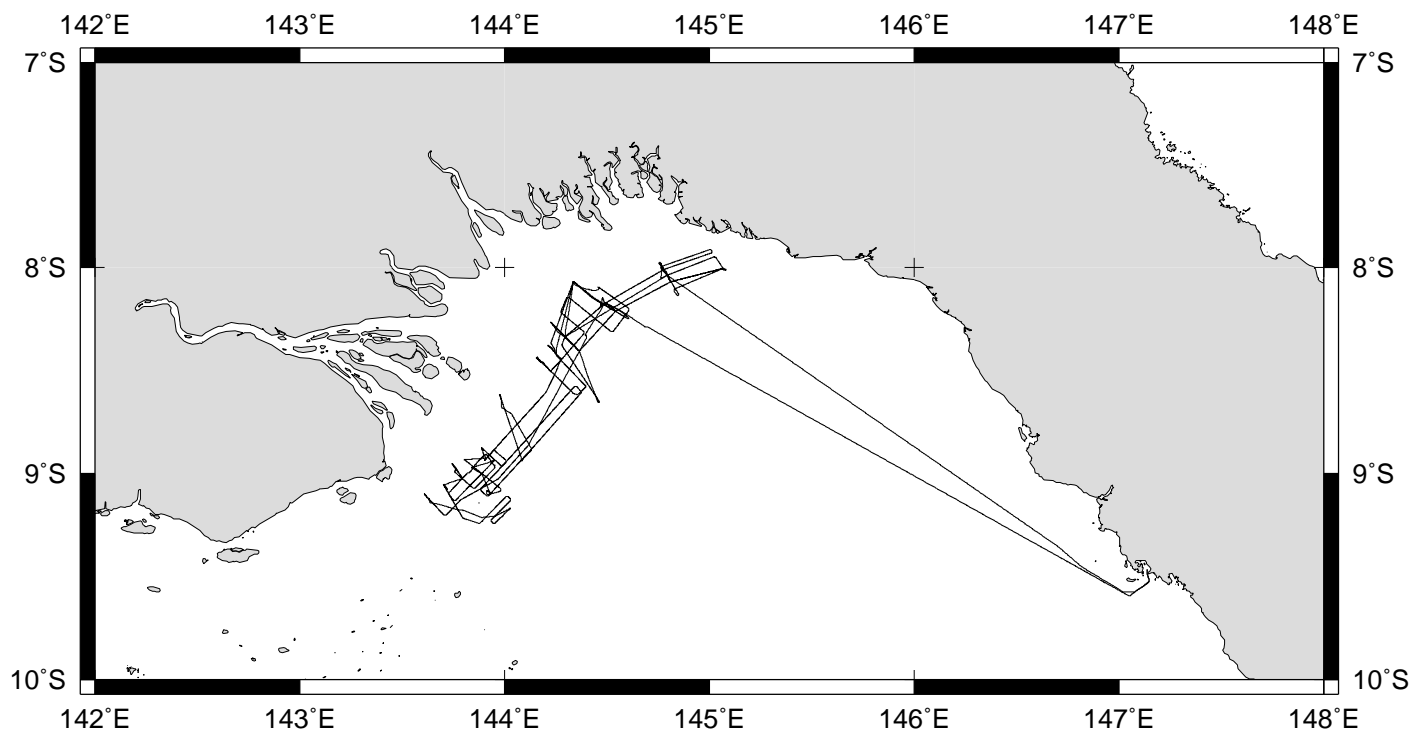
Sample Index - list of begin/end times and positions of all underway records as well as samples and measurements from other disciplines collected on the leg.

Note:

For information on the availability of this current digital data as well as archived digital data contact:

Stephen P. Miller
Geological Data Center
Scripps Institution of Oceanography
La Jolla, California 92093-0220
Phone: (858) 534-1898
Internet email: spmiller@ucsd.edu; or his website: <http://SIOExplorer@ucsd.edu>

Rev 05/2002



VANCOUVER EXPEDITION LEG 20 (VANC20MV)

=====

CHIEF SCIENTIST: Charles Nittrouer, University of Washington

PORTS: Port Moresby - Port Moresby, Papua New Guinea

DATES: 13 -25 January 2004

SHIP: R/V Melville

TOTAL MILEAGE OF UNDERWAY DATA COLLECTED

Cruise-1377 miles

Magnetics-none collected

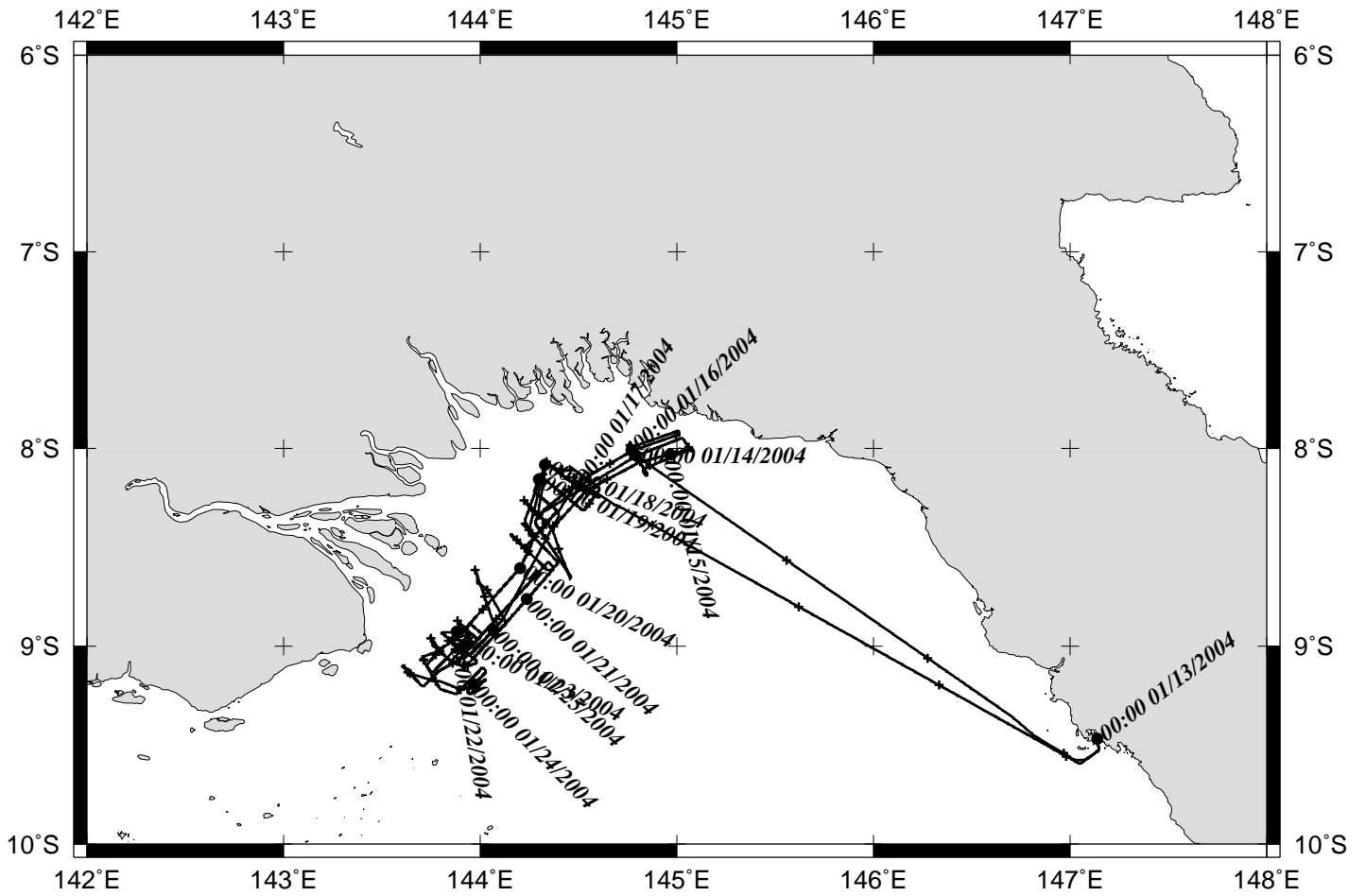
Bathymetry-240 miles

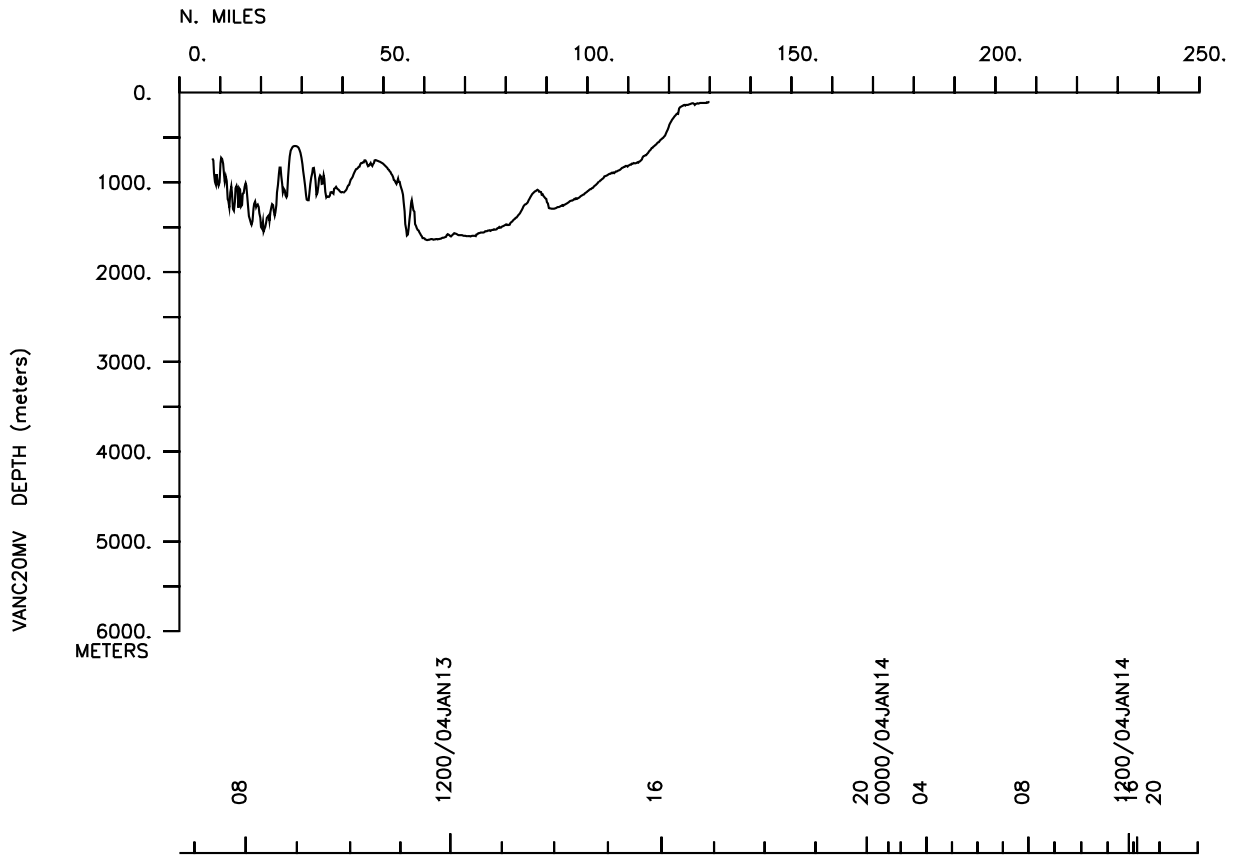
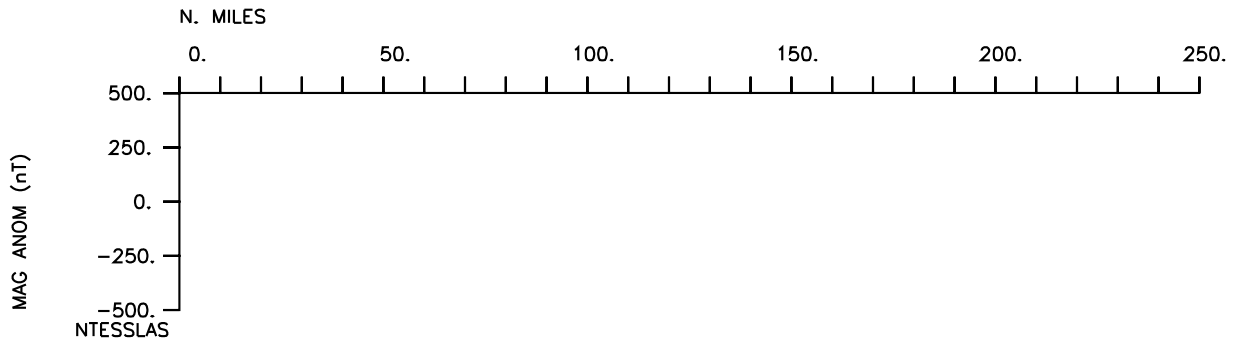
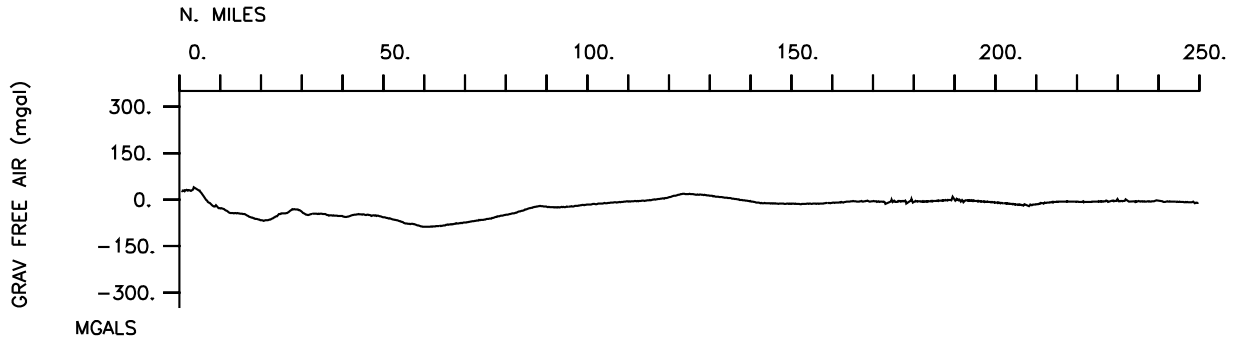
Seismic Reflection-none collected

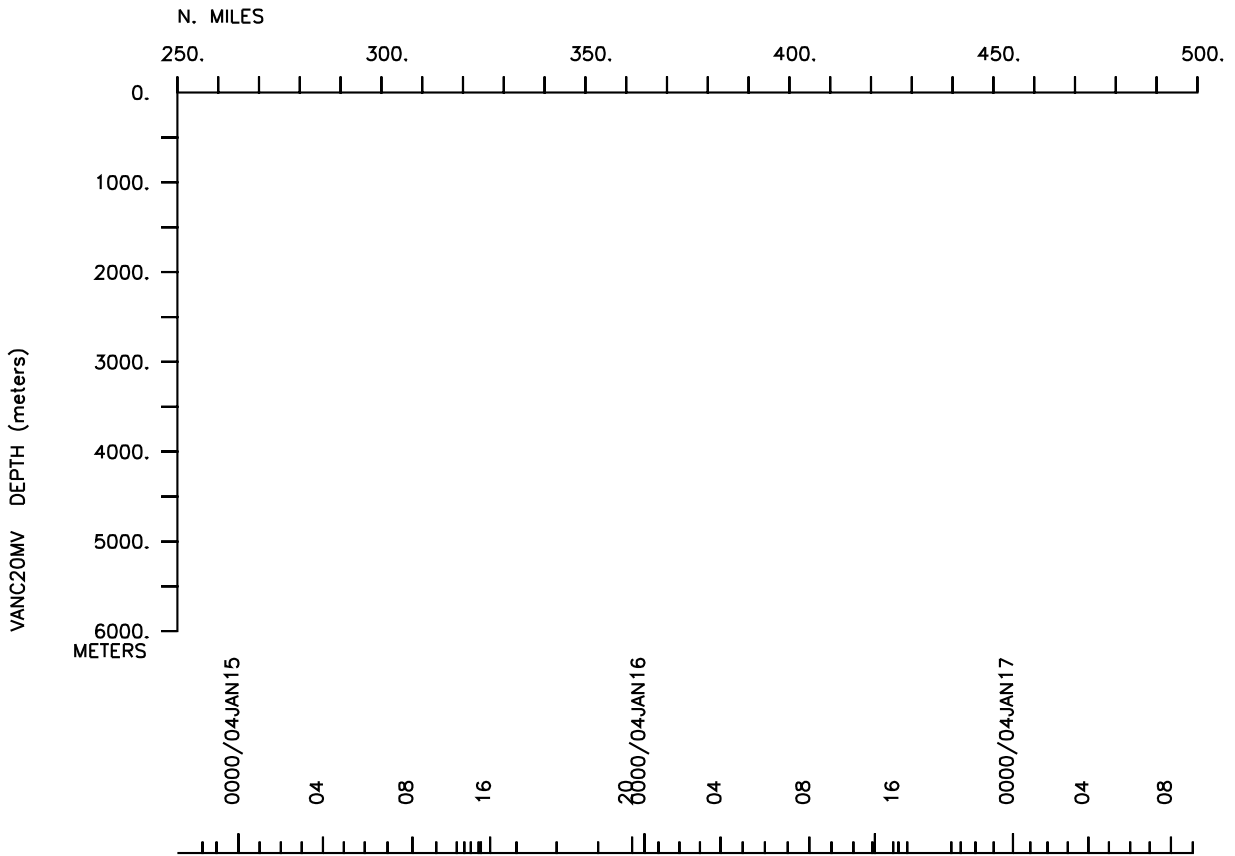
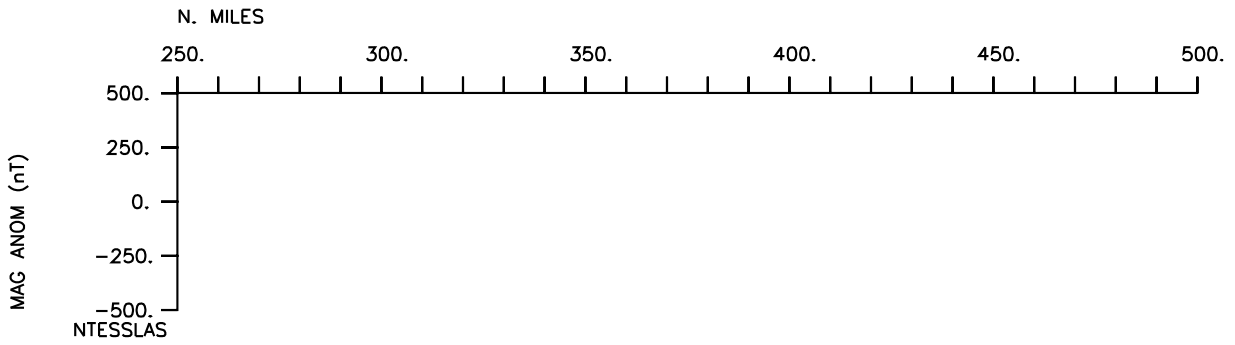
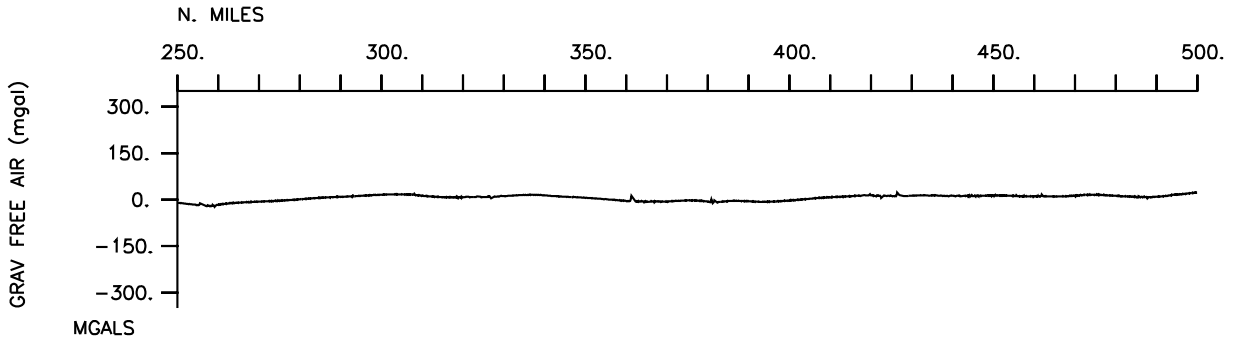
Multibeam-240 miles

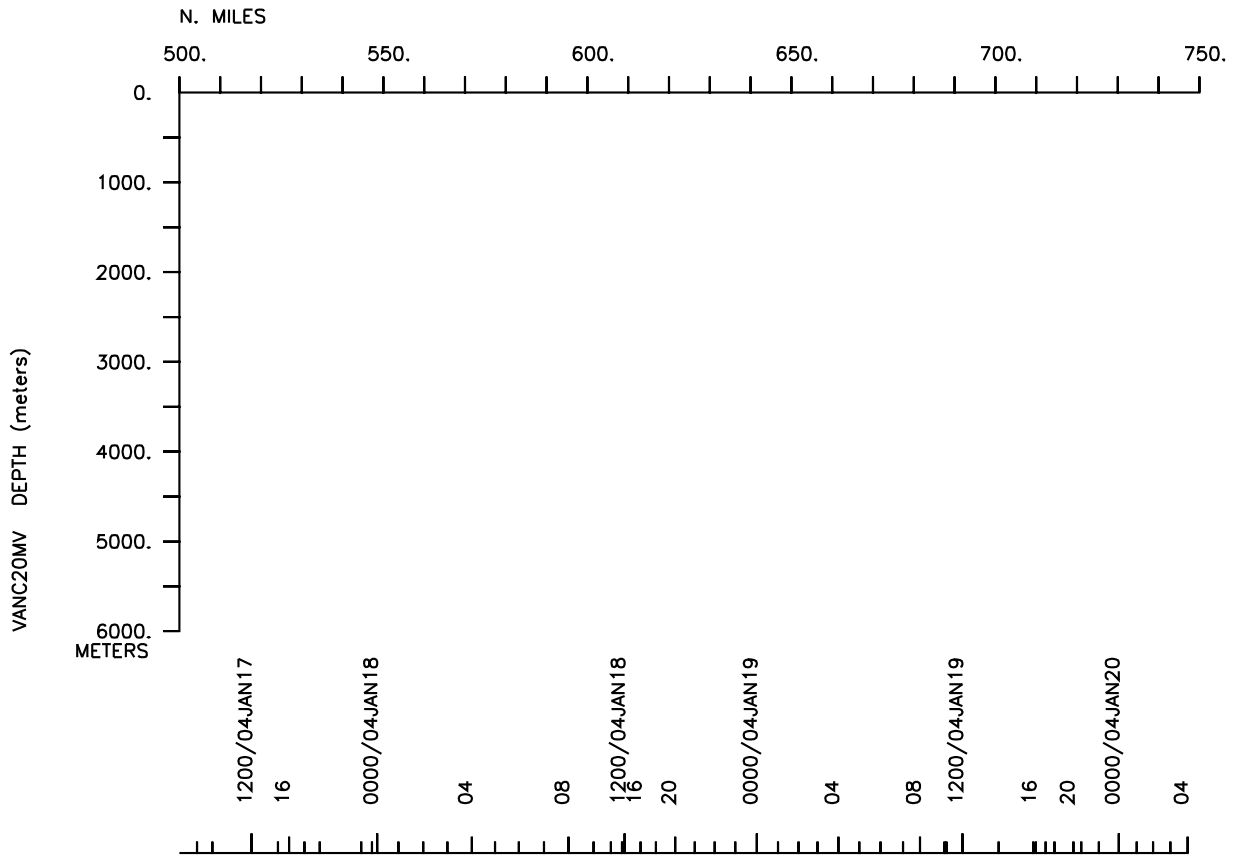
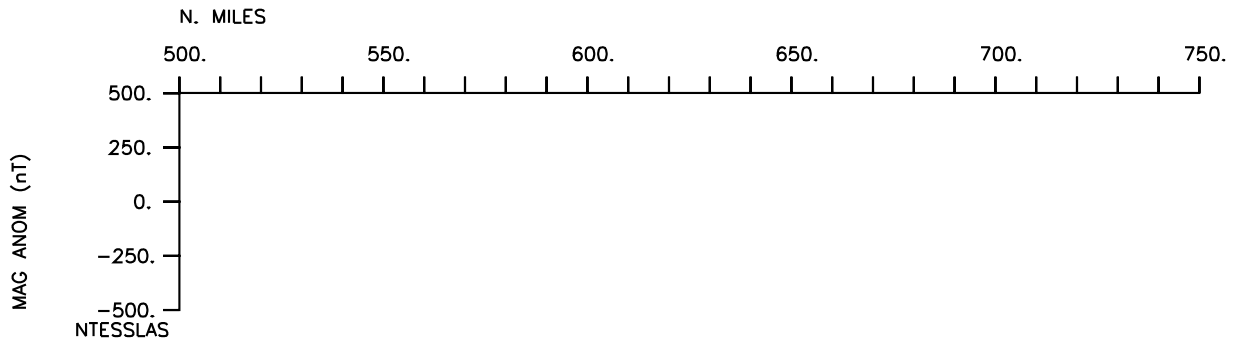
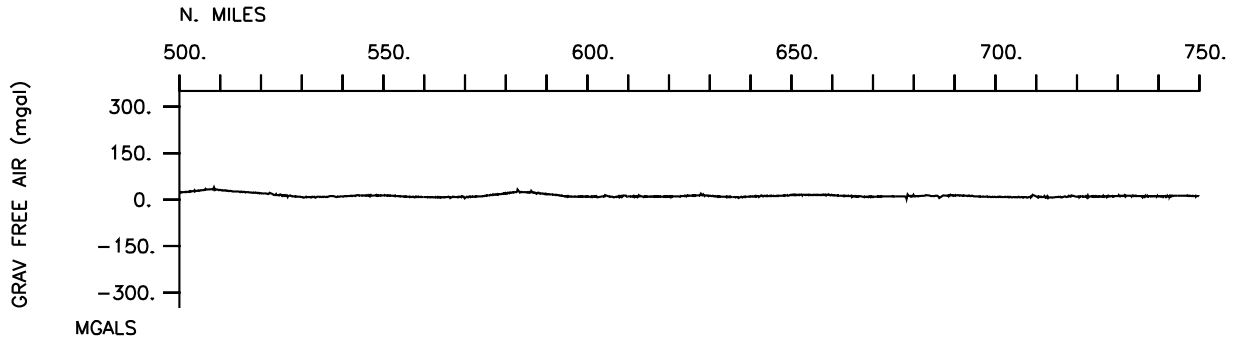
Gravity-1377 miles

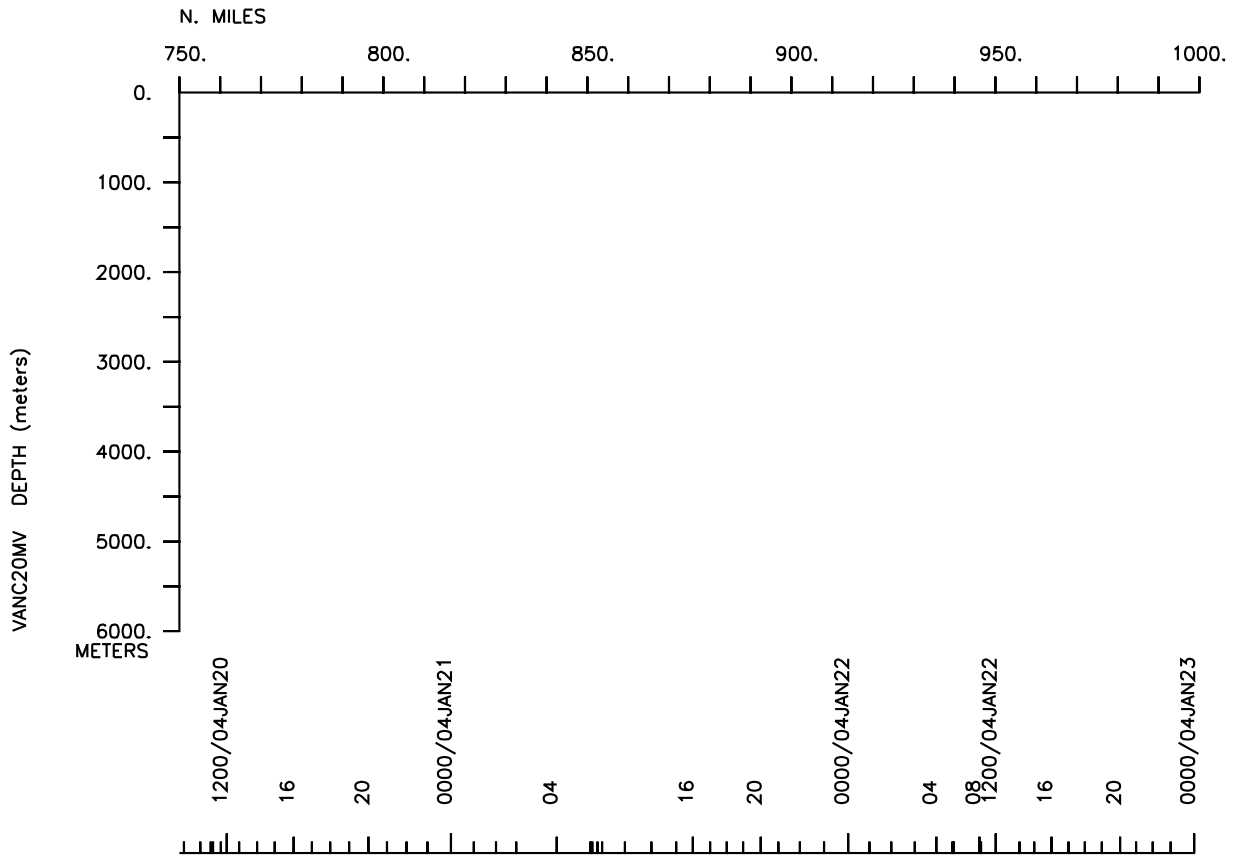
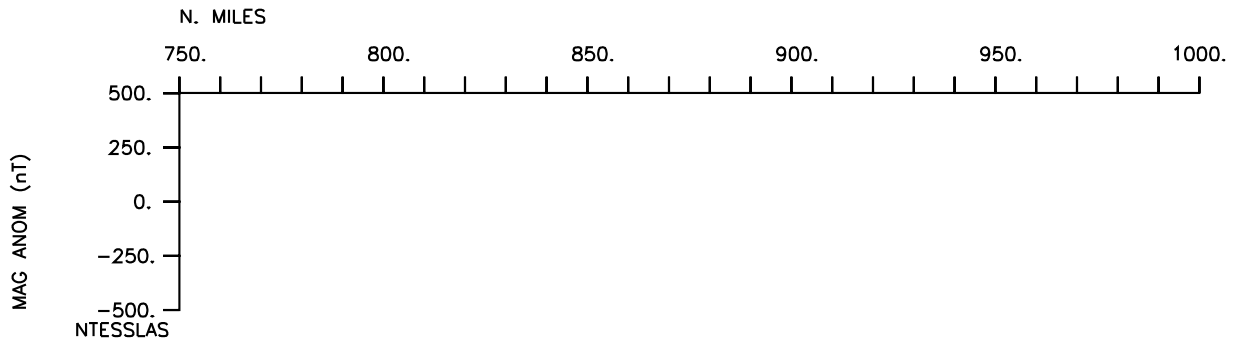
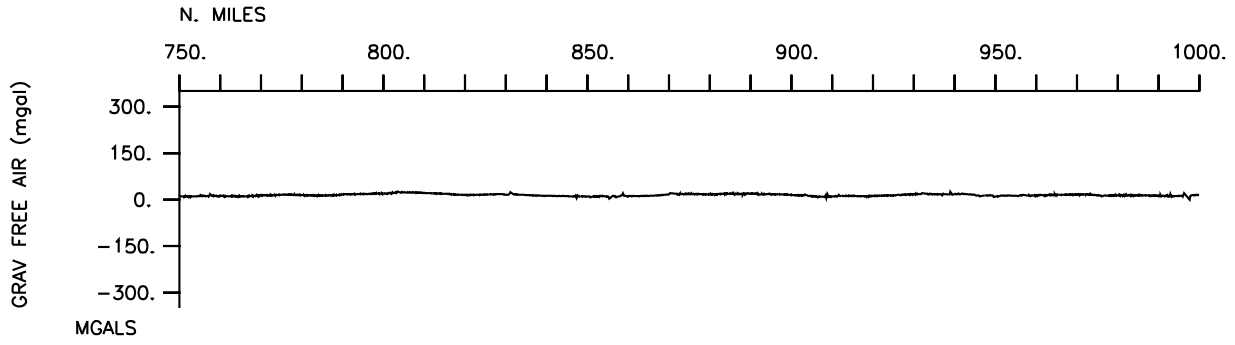
VANC20MV

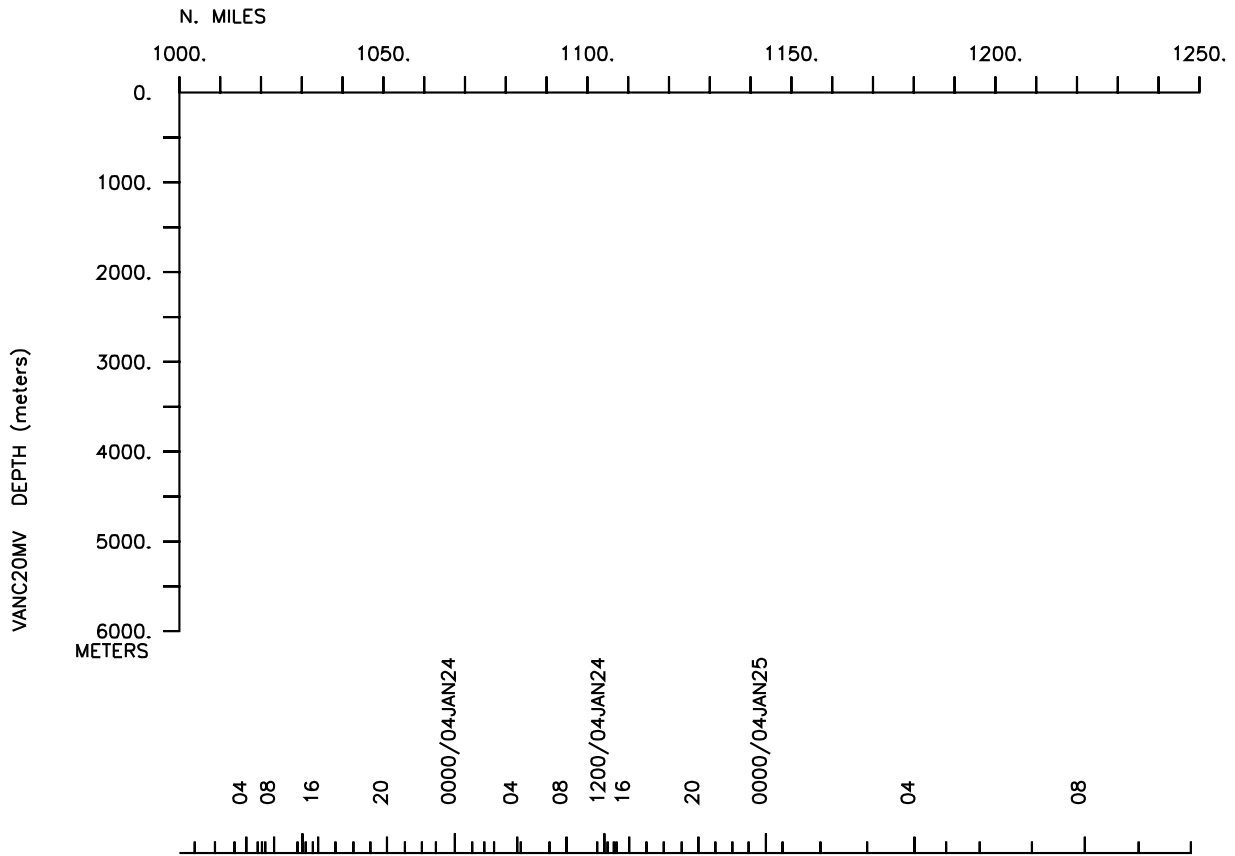
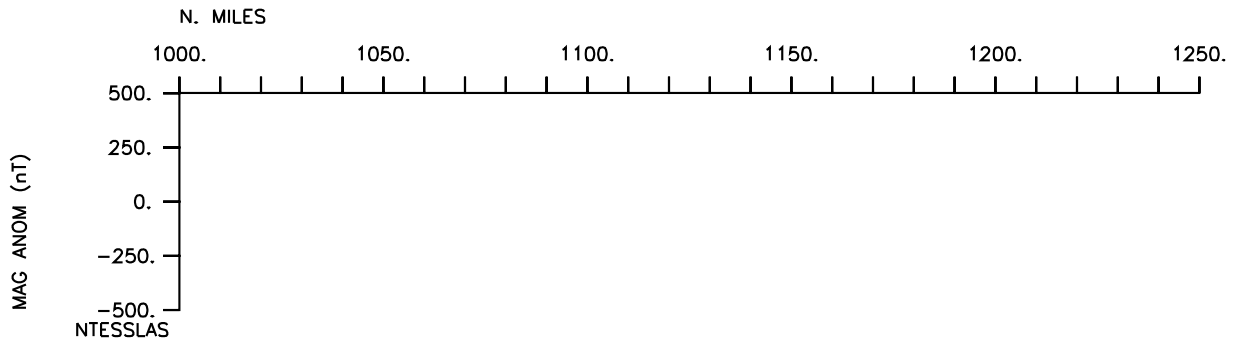
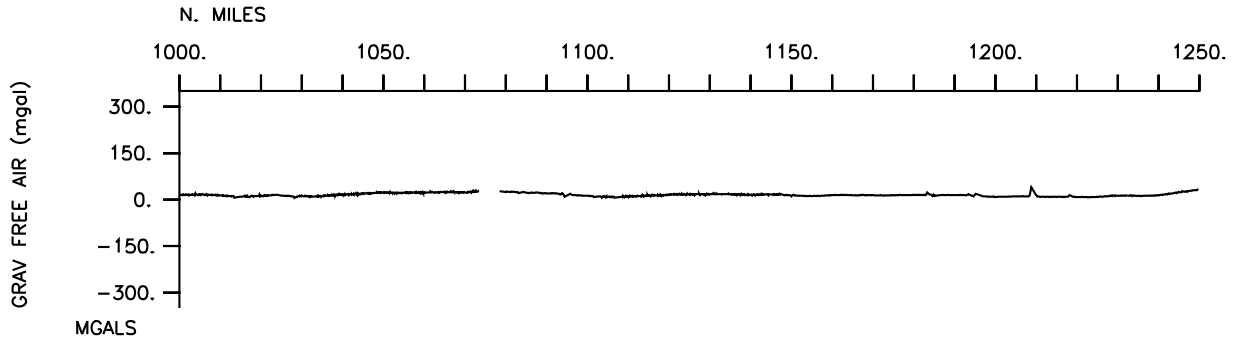


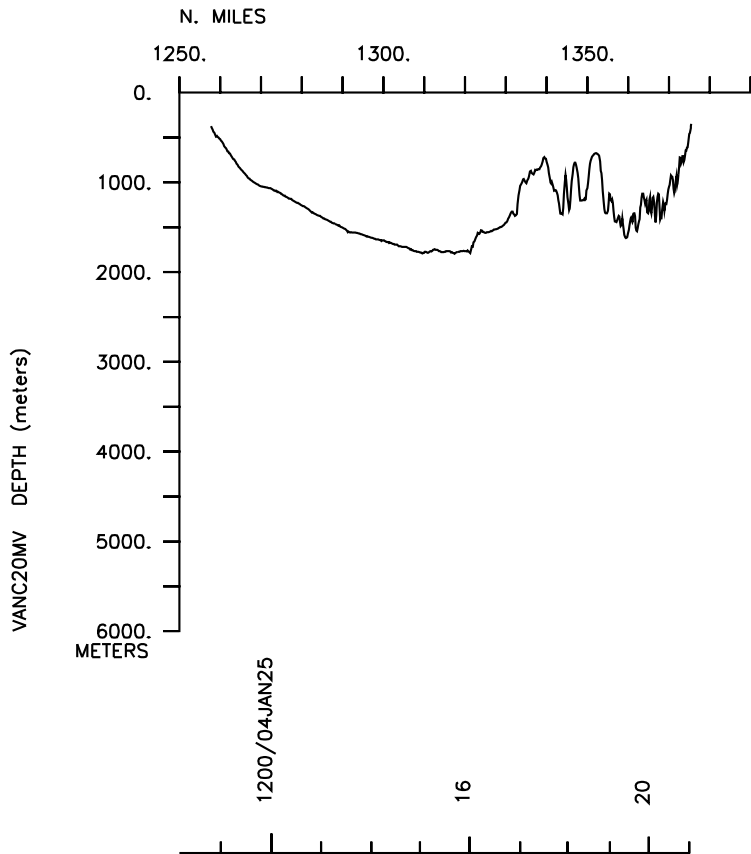
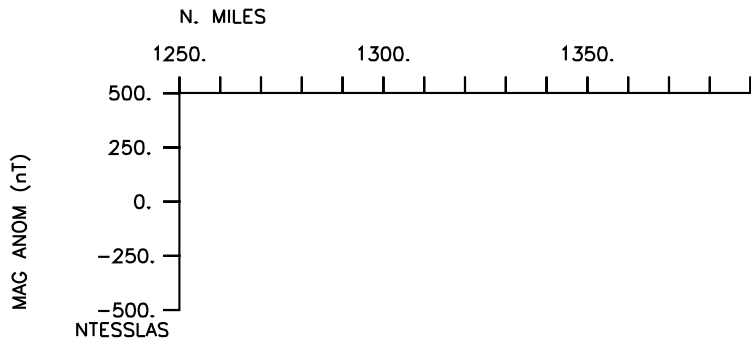
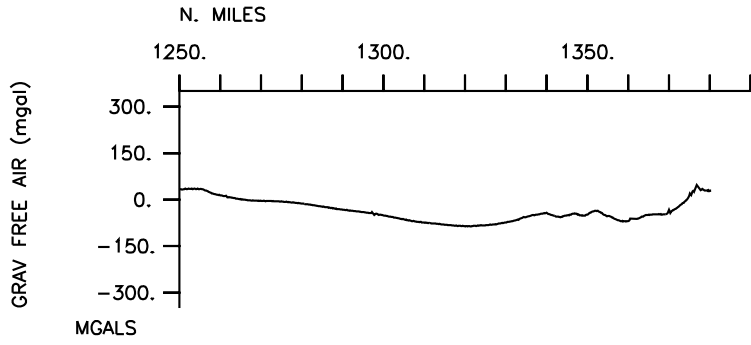












1200/04-JAN25

16

20

**** Ports ***

0600 130104 LGPT B Port Moresby, PNG 09-28.00S 147-09.00E f VANC20MV
 2159 250104 LGPT E Port Moresby, PNG 09-28.00S 147-09.00E f VANC20MV

**** Personnel ***

#	*****NAME*****	*****TITLE*****	*****AFFILIATION*****	**CRID**
PECS UWA	Nittrouer, C.	Chief Scientist	Univ. of Washington	VANC20MV
PESP SIX	Aller, R.	Scientist	S.U.of N.Y.Stonybrk	VANC20MV
PESP SIO	Driscoll,N.	Scientist	Scripps Institution	VANC20MV
PESP SIX	Goni, M.	Scientist	Univ. South Carolina	VANC20MV
PESP WHOI	Kautz, C.	Scientist	Woods Hole	VANC20MV
PESP WHOI	Martin, C.	Scientist	Woods Hole	VANC20MV
PECT STS	Foley,S.	Computer Tech	Scripps Institution	VANC20MV
PEMT UWA	Nittrouer, D.	Technician	Univ. of Washington	VANC20MV
PERT STS	Ravenhill, G.	Resident Tech	Scripps Institution	VANC20MV
PEST SIX	Apami, T.	Grad student	U. Papua New Guinea	VANC20MV
PEST UWA	Crockett, J.	Grad student	Univ. of Washington	VANC20MV
PEST SIO	Hill,J.	Grad student	Scripps Institution	VANC20MV
PEST SIX	Homu, H.	Grad student	U. Papua New Guinea	VANC20MV
PEST SIX	Ila, A.	Grad student	U. Papua New Guinea	VANC20MV
PEST SIX	Inia, R.	Grad student	U. Papua New Guinea	VANC20MV
PEST SIX	Laim, G.	Grad student	U. Papua New Guinea	VANC20MV
PEST SIX	Lale, P.	Grad student	U. Papua New Guinea	VANC20MV
PEST SIX	Madrid, V.	Grad student	S.U.of N.Y.Stonybrk	VANC20MV
PEST SIX	Monacci, N.	Grad student	Univ. South Carolina	VANC20MV
PEST SIX	Panzeca, C.	Grad student	S.U.of N.Y.Stonybrk	VANC20MV
PEST UWA	Presto, M.	Grad student	Univ. of Washington	VANC20MV
PEST SIX	Rarua, O.	Grad student	U. Papua New Guinea	VANC20MV

**** NOTES ***

#An 'X' in the (B)egin/(E)nd column following the sample code indicates no
 #sample or data recovered. A 'C' indicates continuation of data collection
 #from before the beginning or after the end of a particular leg, (moored
 #bottom instruments, for example.) The number appearing in the columns
 #between the sample identifier and the disposition code, for many sample
 #entries, is the water depth in corrected meters.

#GMT	DDMMYY	SAMP	B	SAMPLE	DISP			p	CRUISE
#TIME	DATE	TZ	CODE	E IDENTIFIER	CODE	LATITUDE	LONGITUDE	c	LEG-SHIP

**** Underway Data Curator - Shipboard Technical Support Group ext.41899 ***
 **** Digital Data Curator - Geological Data Center, S.P. Miller, ext.41898 ***

**** MultiBeam Data (vertical beam and side scan) ***

0723 130104 0 MBSR B Multibeam&sidescan GDC 9-33.97S 147-05.52E g VANC20MV
 2105 250104 0 MBSR E Multibeam&sidescan GDC 9-32.45S 147-07.65E g VANC20MV

**** Digital Gravity ***

0600 130104 0 GVDD B Digital gravity GDC 9-28.04S 147-08.24E g VANC20MV
 2159 250104 0 GVDD E Digital gravity GDC 9-28.19S 147-08.37E g VANC20MV

**** Echo Sounder Records ***

2159 130104 0 DPR3 B Echosounder 3.5kHz GDC 8-02.24S 144-47.63E g VANC20MV
 0800 250104 0 DPR3 E Echosounder 3.5kHz GDC 8-23.25S 144-52.52E g VANC20MV

#GMT	DDMMYY	SAMP	B	SAMPLE	DISP				p	CRUISE
#TIME	DATE	TZ	CODE	E IDENTIFIER	CODE	LATITUDE	LONGITUDE		c	LEG-SHIP
#-----	--	---	-	-----	----	-----	-----	-----	-	-----
#*** Integrated Meteorological Acquisition System ***										
2159	130104	0	IMET	B Weather Measurements	GDC	8-02.24S	144-47.63E	g		VANC20MV
0800	250104	0	IMET	E Weather Measurements	GDC	8-23.25S	144-52.52E	g		VANC20MV
#*** Acoustic Doppler Current Profiler ***										
1600	130104	0	ADCP	B 300khz Current Meas.	GDC	8-33.99S	145-33.54E	g		VANC20MV
2159	250104	0	ADCP	E Current Measurements	GDC	9-28.19S	147-08.37E	g		VANC20MV
#*** Hydrocasts ***										
2048	130104	0	HCXX	BLISP #5 47M	UWA	8-02.24S	144-47.63E	g		VANC20MV
2130	130104	0	HCXX	BLISP #6 51M	UWA	8-02.24S	144-47.63E	g		VANC20MV
1318	140104	0	HCXX	BLISP #7 18M	UWA	7-58.81S	144-45.80E	g		VANC20MV
1653	140104	0	HCXX	BLISP #8 67M	UWA	8-04.11S	144-48.76E	g		VANC20MV
1114	150104	0	HCXX	BLISP #9 12M	UWA	8-15.80S	144-13.44E	g		VANC20MV
1359	150104	0	HCXX	BLISP #10 19M	UWA	8-18.66S	144-15.44E	g		VANC20MV
1546	150104	0	HCXX	BLISP #11 29M	UWA	8-20.20S	144-17.73E	g		VANC20MV
2020	150104	0	HCXX	BLISP #12 53M	UWA	8-02.24S	144-47.65E	g		VANC20MV
2028	150104	0	HCXX	BLISP #13 49M	UWA	8-02.25S	144-47.62E	g		VANC20MV
1134	160104	0	HCXX	BLISP #14 21M	UWA	8-08.84S	144-28.61E	g		VANC20MV
1426	160104	0	HCXX	BLISP #15 51M	UWA	8-12.76S	144-32.49E	g		VANC20MV
1842	160104	0	HCXX	BLISP #16 10M	UWA	8-04.06S	144-20.13E	g		VANC20MV
1318	170104	0	HCXX	BLISP #17 62M	UWA	8-24.37S	144-21.89E	g		VANC20MV
1620	170104	0	HCXX	BLISP #18 46M	UWA	8-22.55S	144-20.11E	g		VANC20MV
1032	180104	0	HCXX	BLISP #19 15M	UWA	8-26.31S	144-09.49E	g		VANC20MV
1126	180104	0	HCXX	BLISP #20 19M	UWA	8-27.68S	144-11.08E	g		VANC20MV
1418	180104	0	HCXX	BLISP #21 32M	UWA	8-30.35S	144-13.57E	g		VANC20MV
0910	190104	0	HCXX	BLISP #22 15M	UWA	8-04.08S	144-20.14E	g		VANC20MV
1440	190104	0	HCXX	BLISP #23 20M	UWA	8-24.88S	144-14.87E	g		VANC20MV
1506	190104	0	HCXX	BLISP #24 20M	UWA	8-24.88S	144-14.87E	g		VANC20MV
1733	190104	0	HCXX	BLISP #25 13M	UWA	8-22.72S	144-12.68E	g		VANC20MV
1854	190104	0	HCXX	BLISP #26 33M	UWA	8-26.85S	144-16.77E	g		VANC20MV
1941	190104	0	HCXX	BLISP #28 21M	UWA	8-26.85S	144-16.77E	g		VANC20MV
0730	200104	0	HCXX	BLISP #27 39M	UWA	8-55.81S	143-54.55E	g		VANC20MV
1142	200104	0	HCXX	BLISP #29 15M	UWA	8-52.44S	143-53.16E	g		VANC20MV
0521	210104	0	HCXX	BLISP #30 23M	UWA	8-36.91S	143-58.54E	g		VANC20MV
0839	210104	0	HCXX	BLISP #31 24M	UWA	8-36.91S	143-58.52E	g		VANC20MV
0934	210104	0	HCXX	BLISP #32 27M	UWA	8-38.95S	143-59.09E	g		VANC20MV
1102	210104	0	HCXX	BLISP #33 35M	UWA	8-42.93S	144-02.18E	g		VANC20MV
0530	220104	0	HCXX	BLISP #34 95M	UWA	9-05.94S	143-55.81E	g		VANC20MV
0836	220104	0	HCXX	BLISP #35 96M	UWA	9-00.10S	143-53.36E	g		VANC20MV
1154	220104	0	HCXX	BLISP #36 26M	UWA	8-58.36S	143-50.33E	g		VANC20MV
0425	230104	0	HCXX	BLISP #37 15M	UWA	8-57.06S	143-44.55E	g		VANC20MV
0524	230104	0	HCXX	BLISP #38 24M	UWA	8-59.42S	143-46.14E	g		VANC20MV
0742	230104	0	HCXX	BLISP #39 33M	UWA	9-01.62S	143-47.63E	g		VANC20MV
1018	230104	0	HCXX	BLISP #40 17M	UWA	9-03.43S	143-42.17E	g		VANC20MV
1415	230104	0	HCXX	BLISP #42 28M	UWA	9-04.76S	143-43.29E	g		VANC20MV
2002	230104	0	HCXX	BLISP #41 22M	UWA	9-13.21S	143-54.08E	g		VANC20MV
0433	240104	0	HCXX	BLISP #43 51M	UWA	9-12.53S	143-57.12E	g		VANC20MV
0753	240104	0	HCXX	BLISP #44 39M	UWA	9-10.70S	143-46.40E	g		VANC20MV
1013	240104	0	HCXX	BLISP #45 24M	UWA	9-08.87S	143-39.16E	g		VANC20MV
1420	240104	0	HCXX	BLISP #47 17M	UWA	9-06.03S	143-36.46E	g		VANC20MV
2301	240104	0	HCXX	BLISP #46 25M	UWA	8-57.98S	144-01.41E	g		VANC20MV

#GMT	DDMMYY	SAMP	B	SAMPLE	DISP				p	CRUISE
#TIME	DATE	TZ	CODE	E IDENTIFIER	CODE	LATITUDE	LONGITUDE		c	LEG-SHIP
#-----	--	---	-	-----	-----	-----	-----	-----	-	-----

*** Temperature, Conductivity, Density ***
 *** Samples to Univ. of South Carolina ***

2109	130104	0	TDCT	CTD	#2	45M	24BTLS	SIX	8-02.24S	144-47.63E	g	VANC20MV
1330	140104	0	TDCT	CTD	#3	16M	24BTLS	SIX	7-58.81S	144-45.80E	g	VANC20MV
1715	140104	0	TDCT	CTD	#4	63M	24BTLS	SIX	8-04.11S	144-48.76E	g	VANC20MV
1128	150104	0	TDCT	CTD	#5	13M	24BTLS	SIX	8-15.81S	144-13.44E	g	VANC20MV
1417	150104	0	TDCT	CTD	#6	17M	24BTLS	SIX	8-18.66S	144-15.44E	g	VANC20MV
1604	150104	0	TDCT	CTD	#7	24M	24BTLS	SIX	8-20.20S	144-17.73E	g	VANC20MV
1152	160104	0	TDCT	CTD	#8	18M	24BTLS	SIX	8-08.84S	144-28.61E	g	VANC20MV
1449	160104	0	TDCT	CTD	#9	43M	24BTLS	SIX	8-12.77S	144-32.49E	g	VANC20MV
1857	160104	0	TDCT	CTD	#10	10M	24BTLS	SIX	8-04.06S	144-20.13E	g	VANC20MV
1342	170104	0	TDCT	CTD	#11	64M	24BTLS	SIX	8-24.37S	144-21.89E	g	VANC20MV
1639	170104	0	TDCT	CTD	#12	42M	24BTLS	SIX	8-22.55S	144-20.11E	g	VANC20MV
1932	170104	0	TDCT	CTD	#13	24M	24BTLS	SIX	8-20.20S	144-17.72E	g	VANC20MV
1140	180104	0	TDCT	CTD	#14	17M	24BTLS	SIX	8-27.68S	144-11.08E	g	VANC20MV
1435	180104	0	TDCT	CTD	#15	29M	24BTLS	SIX	8-30.35S	144-13.57E	g	VANC20MV
0936	190104	0	TDCT	CTD	#16	12M	24BTLS	SIX	8-04.07S	144-20.14E	g	VANC20MV
1451	190104	0	TDCT	CTD	#17	15M	24BTLS	SIX	8-24.88S	144-14.87E	g	VANC20MV
1913	190104	0	TDCT	CTD	#18	30M	24BTLS	SIX	8-26.85S	144-16.77E	g	VANC20MV
0749	200104	0	TDCT	CTD	#19	38M	24BTLS	SIX	8-55.81S	143-54.55E	g	VANC20MV
0956	200104	0	TDCT	CTD	#20	20M	24BTLS	SIX	8-53.70S	143-53.70E	g	VANC20MV
0543	210104	0	TDCT	CTD	#21	12M	24BTLS	SIX	8-36.91S	143-58.53E	g	VANC20MV
0634	210104	0	TDCT	CTD	#22	14M	24BTLS	SIX	8-36.91S	143-58.52E	g	VANC20MV
0947	210104	0	TDCT	CTD	#23	17M	24BTLS	SIX	8-38.95S	143-59.09E	g	VANC20MV
1122	210104	0	TDCT	CTD	#24	31M	24BTLS	SIX	8-42.93S	144-02.18E	g	VANC20MV
0558	220104	0	TDCT	CTD	#25	89M	24BTLS	SIX	9-05.94S	143-55.80E	g	VANC20MV
0901	220104	0	TDCT	CTD	#26	90M	24BTLS	SIX	9-00.10S	143-53.36E	g	VANC20MV
1210	220104	0	TDCT	CTD	#27	24M	24BTLS	SIX	8-58.36S	143-50.33E	g	VANC20MV
0545	230104	0	TDCT	CTD	#28	16M	24BTLS	SIX	8-59.42S	143-46.13E	g	VANC20MV
0806	230104	0	TDCT	CTD	#29	36M	24BTLS	SIX	9-01.63S	143-47.63E	g	VANC20MV
1032	230104	0	TDCT	CTD	#30	17M	24BTLS	SIX	9-03.43S	143-42.17E	g	VANC20MV
2218	230104	0	TDCT	CTD	#31	19M	24BTLS	SIX	9-06.70S	144-00.83E	g	VANC20MV
0506	240104	0	TDCT	CTD	#32	20M	24BTLS	SIX	9-12.52S	143-57.12E	g	VANC20MV
0808	240104	0	TDCT	CTD	#33	35M	24BTLS	SIX	9-10.70S	143-46.40E	g	VANC20MV
1028	240104	0	TDCT	CTD	#34	21M	24BTLS	SIX	9-08.88S	143-39.16E	g	VANC20MV
1246	240104	0	TDCT	CTD	#35	22M	24BTLS	SIX	9-07.43S	143-37.86E	g	VANC20MV

*** Cores ***

2350	130104	0	COBX	BOX	#10	52M		UWA	8-02.24S	144-47.63E	g	VANC20MV
0018	140104	0	COBX	BOX	#11	52M		UWA	8-02.24S	144-47.63E	g	VANC20MV
1440	140104	0	COBX	BOX	#12	15M		UWA	7-58.81S	144-45.81E	g	VANC20MV
1915	140104	0	COBX	BOX	#13	67M		UWA	8-04.11S	144-48.76E	g	VANC20MV
1218	150104	0	COBX	BOX	#14	14M		UWA	8-15.81S	144-13.44E	g	VANC20MV
2112	150104	0	COBX	BOX	#15	48M		UWA	8-02.24S	144-47.64E	g	VANC20MV
2120	150104	0	COBX	BOX	#16	53M		UWA	8-02.24S	144-47.63E	g	VANC20MV
1220	160104	0	COBX	BOX	#17	19M		UWA	8-08.84S	144-28.61E	g	VANC20MV
1625	160104	0	COBX	BOX	#18	54M		UWA	8-12.77S	144-32.49E	g	VANC20MV
1942	160104	0	COBX	BOX	#19	16M		UWA	8-04.07S	144-20.13E	g	VANC20MV
1407	170104	0	COBX	BOX	#20	64M		UWA	8-24.37S	144-21.89E	g	VANC20MV
1752	170104	0	COBX	BOX	#21	49M		UWA	8-22.55S	144-20.11E	g	VANC20MV
1950	170104	0	COBX	BOX	#22	30M		UWA	8-20.20S	144-17.72E	g	VANC20MV
1500	180104	0	COBX	BOX	#23	34M		UWA	8-30.34S	144-13.56E	g	VANC20MV
0954	190104	0	COBX	BOX	#24	14M		UWA	8-04.07S	144-20.15E	g	VANC20MV
1613	190104	0	COBX	BOX	#25	20M		UWA	8-24.88S	144-14.87E	g	VANC20MV
1934	190104	0	COBX	BOX	#26	34M		UWA	8-26.85S	144-16.77E	g	VANC20MV
0813	200104	0	COBX	BOX	#27	40M		UWA	8-55.81S	143-54.55E	g	VANC20MV

#GMT	DDMMYY	SAMP	B	SAMPLE		DISP			p	CRUISE
#TIME	DATE	TZ	CODE	E	IDENTIFIER	CODE	LATITUDE	LONGITUDE	c	LEG-SHIP
#-----	----	--	----	-	-----	----	-----	-----	-	-----
1034	200104	0	COBX	BOX	#28 20M	UWA	8-53.70S	143-53.70E	g	VANC20MV
0726	210104	0	COBX	BOX	#29 12M	UWA	8-36.90S	143-58.53E	g	VANC20MV
1242	210104	0	COBX	BOX	#30 34M	UWA	8-42.93S	144-02.18E	g	VANC20MV
0655	220104	0	COBX	BOX	#31 95M	UWA	9-05.94S	143-55.81E	g	VANC20MV
0927	220104	0	COBX	BOX	#32 92M	UWA	9-00.10S	143-53.36E	g	VANC20MV
1234	220104	0	COBX	BOX	#33 24M	UWA	8-58.36S	143-50.33E	g	VANC20MV
0636	230104	0	COBX	BOX	#34 21M	UWA	8-59.42S	143-46.13E	g	VANC20MV
0826	230104	0	COBX	BOX	#35 20M	UWA	9-01.63S	143-47.63E	g	VANC20MV
1112	230104	0	COBX	BOX	#36 17M	UWA	9-03.43S	143-42.17E	g	VANC20MV
1234	230104	0	COBX	BOX	#37 23M	UWA	9-04.11S	143-42.80E	g	VANC20MV
0525	240104	0	COBX	BOX	#38 52M	UWA	9-12.53S	143-57.12E	g	VANC20MV
0851	240104	0	COBX	BOX	#39 40M	UWA	9-10.70S	143-46.40E	g	VANC20MV
1052	240104	0	COBX	BOX	#40 24M	UWA	9-08.88S	143-39.16E	g	VANC20MV
1324	240104	0	COBX	BOX	#41 27M	UWA	9-07.43S	143-37.86E	g	VANC20MV
2226	130104	0	COMC	MULTI	#1 52M	SIX	8-02.24S	144-47.63E	g	VANC20MV
1838	140104	0	COMC	MULTI	#2 67M	SIX	8-04.11S	144-48.76E	g	VANC20MV
1154	150104	0	COMC	MULTI	#3 14M	SIX	8-15.80S	144-13.44E	g	VANC20MV
1250	160104	0	COMC	MULTI	#4 19M	SIX	8-08.84S	144-28.61E	g	VANC20MV
1306	160104	0	COMC	MULTI	#5 19M	SIX	8-08.84S	144-28.61E	g	VANC20MV
1511	160104	0	COMC	MULTI	#6 54M	SIX	8-12.77S	144-32.49E	g	VANC20MV
2007	160104	0	COMC	MULTI	#7 16M	SIX	8-04.07S	144-20.13E	g	VANC20MV
1446	170104	0	COMC	MULTI	#8 64M	SIX	8-24.37S	144-21.89E	g	VANC20MV
1710	170104	0	COMC	MULTI	#9 49M	SIX	8-22.55S	144-20.11E	g	VANC20MV
1728	170104	0	COMC	MULTI	#10 49M	SIX	8-22.55S	144-20.11E	g	VANC20MV
2013	170104	0	COMC	MULTI	#11 30M	SIX	8-20.20S	144-17.72E	g	VANC20MV
1202	180104	0	COMC	MULTI	#12 14M	SIX	8-27.68S	144-11.08E	g	VANC20MV
1529	180104	0	COMC	MULTI	#13 34M	SIX	8-30.35S	144-13.56E	g	VANC20MV
1057	190104	0	COMC	MULTI	#14 14M	SIX	8-04.07S	144-20.15E	g	VANC20MV
1527	190104	0	COMC	MULTI	#15 20M	SIX	8-24.88S	144-14.87E	g	VANC20MV
2033	190104	0	COMC	MULTI	#16 34M	SIX	8-26.85S	144-16.77E	g	VANC20MV
0842	200104	0	COMC	MULTI	#17 40M	SIX	8-55.81S	143-54.55E	g	VANC20MV
1016	200104	0	COMC	MULTI	#18 20M	SIX	8-53.70S	143-53.70E	g	VANC20MV
0818	210104	0	COMC	MULTI	#19 12M	SIX	8-36.91S	143-58.52E	g	VANC20MV
1148	210104	0	COMC	MULTI	#20 34M	SIX	8-42.93S	144-02.18E	g	VANC20MV
0629	220104	0	COMC	MULTI	#21 95M	SIX	9-05.94S	143-55.81E	g	VANC20MV
0958	220104	0	COMC	MULTI	#22 92M	SIX	9-00.10S	143-53.36E	g	VANC20MV
1256	220104	0	COMC	MULTI	#23 24M	SIX	8-58.36S	143-50.33E	g	VANC20MV
0615	230104	0	COMC	MULTI	#24 21M	SIX	8-59.42S	143-46.13E	g	VANC20MV
0856	230104	0	COMC	MULTI	#25 20M	SIX	9-01.63S	143-47.63E	g	VANC20MV
1052	230104	0	COMC	MULTI	#26 17M	SIX	9-03.43S	143-42.17E	g	VANC20MV
1259	230104	0	COMC	MULTI	#27 23M	SIX	9-04.11S	143-42.81E	g	VANC20MV
0600	240104	0	COMC	MULTI	#28 52M	SIX	9-12.53S	143-57.12E	g	VANC20MV
0830	240104	0	COMC	MULTI	#29 40M	SIX	9-10.70S	143-46.40E	g	VANC20MV
1302	240104	0	COMC	MULTI	#31 27M	SIX	9-07.43S	143-37.85E	g	VANC20MV
0856	130104	0	COKS	Kasten#1	54M	UWA	9-26.27S	146-47.95E	g	VANC20MV
2322	130104	0	COKS	Kasten#2	54M	UWA	8-02.24S	144-47.63E	g	VANC20MV
1536	140104	0	COKS	Kasten#3	16M	UWA	7-58.81S	144-45.81E	g	VANC20MV
1744	140104	0	COKS	Kasten#4	49M	UWA	8-04.11S	144-48.76E	g	VANC20MV
1805	140104	0	COKS	Kasten#5	68M	UWA	8-04.11S	144-48.76E	g	VANC20MV
2025	160104	0	COKS	Kasten#6	16M	UWA	8-04.06S	144-20.13E	g	VANC20MV
1222	180104	0	COKS	Kasten#7	20M	UWA	8-27.68S	144-11.09E	g	VANC20MV
1712	180104	0	COKS	Kasten#8	36M	UWA	8-30.35S	144-13.56E	g	VANC20MV
1022	190104	0	COKS	Kasten#9	14M	UWA	8-04.07S	144-20.15E	g	VANC20MV
1550	190104	0	COKS	Kasten#10	19M	UWA	8-24.88S	144-14.87E	g	VANC20MV
2004	190104	0	COKS	Kasten#11	35M	UWA	8-26.85S	144-16.78E	g	VANC20MV
0754	210104	0	COKS	Kasten#12	17M	UWA	8-36.91S	143-58.52E	g	VANC20MV
1210	210104	0	COKS	Kasten#13	34M	UWA	8-42.93S	144-02.18E	g	VANC20MV

#GMT	DDMMYY	SAMP	B	SAMPLE	DISP				p	CRUISE
#TIME	DATE	TZ	CODE	E IDENTIFIER	CODE	LATITUDE	LONGITUDE		c	LEG-SHIP
#-----	--	---	-	-----	----	-----	-----	-----	-	-----
0856	130104	0	COPS	Piston#1	54M	UWA	9-26.27S	146-47.95E	g	VANC20MV
2304	150104	0	COPS	Piston#2	39M	UWA	8-02.24S	144-47.63E	g	VANC20MV
1603	160104	0	COPS	Piston#3	50M	UWA	8-12.77S	144-32.49E	g	VANC20MV
2252	170104	0	COPS	Piston#4	32M	UWA	8-04.08S	144-20.15E	g	VANC20MV
1609	180104	0	COPS	Piston#5	21M	UWA	8-30.35S	144-13.56E	g	VANC20MV
1044	220104	0	COPS	Piston#6	90M	UWA	9-00.10S	143-53.36E	g	VANC20MV
1328	230104	0	COPS	Piston#7	19M	UWA	9-04.11S	143-42.81E	g	VANC20MV

*** Surface Samples ***

1423	140104	0	SSXX	Trace #1	15M	WHOI	7-58.81S	144-45.80E	g	VANC20MV
1445	150104	0	SSXX	Trace #2	20M	WHOI	8-18.66S	144-15.45E	g	VANC20MV
2055	150104	0	SSXX	Trace #3	52M	WHOI	8-02.24S	144-47.63E	g	VANC20MV
1928	160104	0	SSXX	Trace #4	14M	WHOI	8-04.06S	144-20.13E	g	VANC20MV
1920	170104	0	SSXX	Trace #5	31M	WHOI	8-20.20S	144-17.72E	g	VANC20MV
0605	210104	0	SSXX	Trace #6	10M	WHOI	8-36.91S	143-58.52E	g	VANC20MV
0619	210104	0	SSXX	Trace #7	11M	WHOI	8-36.91S	143-58.53E	g	VANC20MV

*** Towed Subbottom Depth Profiler ***

0219	140104	0	DPXX	CHIRP #1		SIO	8-02.24S	144-47.63E	g	VANC20MV
1120	140104	0	DPXX	CHIRP #1		SIO	8-03.18S	144-45.77E	g	VANC20MV
2216	140104	0	DPXX	CHIRP #2		SIO	8-00.57S	145-03.97E	g	VANC20MV
1035	150104	0	DPXX	CHIRP #2		SIO	8-15.88S	144-13.52E	g	VANC20MV
0000	160104	0	DPXX	CHIRP #3		SIO	8-00.56S	144-46.12E	g	VANC20MV
1032	160104	0	DPXX	CHIRP #3		SIO	8-11.26S	144-28.22E	g	VANC20MV
2110	160104	0	DPXX	CHIRP #4		SIO	8-04.43S	144-20.52E	g	VANC20MV
0040	170104	0	DPXX	CHIRP #4		SIO	8-12.88S	144-32.68E	g	VANC20MV
2352	170104	0	DPXX	CHIRP #5		SIO	8-04.56S	144-19.98E	g	VANC20MV
0930	180104	0	DPXX	CHIRP #5		SIO	8-26.50S	144-09.75E	g	VANC20MV
1815	180104	0	DPXX	CHIRP #6		SIO	8-30.22S	144-13.67E	g	VANC20MV
0800	190104	0	DPXX	CHIRP #6		SIO	8-06.49S	144-25.08E	g	VANC20MV
2136	190104	0	DPXX	CHIRP #7		SIO	8-26.95S	144-16.66E	g	VANC20MV
0636	200104	0	DPXX	CHIRP #7		SIO	8-56.24S	143-54.21E	g	VANC20MV
1216	200104	0	DPXX	CHIRP #8		SIO	8-52.68S	143-53.43E	g	VANC20MV
0235	210104	0	DPXX	CHIRP #8		SIO	8-56.12S	144-05.25E	g	VANC20MV
1450	210104	0	DPXX	CHIRP #9		SIO	8-53.38S	144-07.67E	g	VANC20MV
0433	220104	0	DPXX	CHIRP #9		SIO	9-05.43S	143-54.82E	g	VANC20MV
1425	220104	0	DPXX	CHIRP #10		SIO	8-56.65S	143-56.68E	g	VANC20MV
0315	230104	0	DPXX	CHIRP #10		SIO	8-59.14S	143-45.74E	g	VANC20MV
1544	230104	0	DPXX	CHIRP #11		SIO	9-03.62S	143-42.34E	g	VANC20MV
0248	240104	0	DPXX	CHIRP #11		SIO	9-11.31S	144-00.50E	g	VANC20MV
1525	240104	0	DPXX	CHIRP #12		SIO	9-06.72S	143-37.10E	g	VANC20MV

*** Expendable Bathythermographs ***

1145	250104	0	BTXP	MK21 #1	Fast_Deep	GDC	8-46.57S	145-34.43E	g	VANC20MV
#				End Sample Index						VANC20MV