

Revelations

May 12, 1990

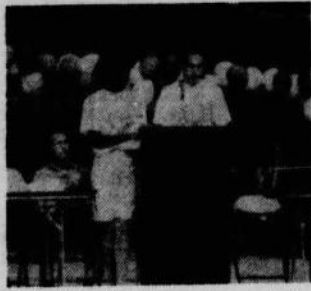
a revelle college publication

Issue 11

Revelle College's 25th Anniversary Celebration



Assemblywoman Sunny Mojoner presented Revelle College with a proclamation of honor on behalf of the California State Assembly.



Dr. Paul Saltman, a former Provost of Revelle College, students Tracy Johnson and Evan Wiesenfeld and several Revelle College alumni addressed the crowd at the 25th Anniversary celebration.



After the ceremonies, alumni, families, faculty and students attended a dinner in Anchorview and a traditional Pit Dance.

Students Find Fulfillment as Med Center Volunteers

By Monte McClain

Established in 1966 as teaching hospital for the UCSD Medical School, the UCSD Medical Center is recognized today as one of the nation's leading hospitals. Because the hospital is so large and has so many patients it is difficult for the hospital staff to meet each patient's needs, that's where Volunteer Services comes in. Volunteers are used primarily to assist in the patients' emotional and social recovery, by providing the extra one on one time with the patients that the busy staff might not otherwise be able to get around to. Out of the 400 working volunteers at the Medical Center since the beginning of the fall approximately 75 of these volunteers have been UCSD students, and more than 26 percent of the 15,219 hours donated by volunteers in 1989 have been done so by volunteers.

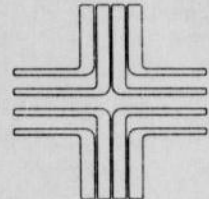
Students have been volunteers at the hospital ever since Volunteer Services first began operating in the early 60's. Many of the students that volunteer their time are interested in medicine and are hoping to learn more about assorted medical fields through on the job experience, and also to help make their future medical school applications even more attractive. But, community service is also another big motivation for students to volunteer their time.

So, this experience is good for Pre-Med majors and students that are interested in giving something back to society, but why is it a valuable experience for me? Elizabeth Thomas, the Assistant Director of Volunteer Services, describes volunteering as an "opportunity for students to get away from the academic environment up on campus, for even a few hours a week, and immerse themselves in the work place. And the experience also assists students in getting a different perspective of the medical field and their future career possibilities.

Tonya Cardoza, a Revelle sophomore who volunteers in the Pediatrics department vouched that she would "definitely recommend the experience because it provides a glimpse of what goes on in a hospital, and a glimpse into the lives of

doctors and nurses and what they must go through. But the experience has also been valuable for me because it has given me a sense of respect for my health, and has taught me to be thankful for the health that I have."

Through volunteering close friendships can be developed, and valuable



UCSD
MEDICAL CENTER

University of California, San Diego,
Medical Center

references for future jobs, as well as graduate and medical school applications can be created. Volunteering can also be a sort of job for students who can't afford the ten or more hours a week in their busy schedule for a part-time job, but can afford a few hours a week to help out at the hospital.

So, volunteering might sound good, but you're wondering what exactly it entails. To be involved as a volunteer requires no previous medical experience whatsoever, but does involve a minimal time commitment of four or five hours a week, and fifty hours total. Volunteers can choose to work in practically any area of the hospital from maximum patient contact such as the Burn Unit and Pediatrics, to minimum patient contact like the Operating Room, to no contact opportunities in research labs on campus at the Medical School. You don't have a source of transportation? Well, don't worry because there are free shuttles for UCSD students that depart and arrive every half hour from the Medical Center. The Volunteer Services Agency comes to campus to recruit prospective students during the Fall and Winter quarters, but if you would like to get involved as soon as possible you can get in touch with Volunteer Services at 543-6370 to sign up for the upcoming June orientations.

and population.

Under Gann, the state's annual budgetary growth averages only seven percent, short of the almost nine percent a year the University will need to keep up with enrollment demands as well as maintaining the quality of academic programs.

Please See Prop 111, Page 2

INSIDE:

Clo's Encounters:
Love is in the Air

Page 2

RCC 1990-91
Elections

Page 3

Campus Notes

Page 4

Free Public Forum to be held at UCSD

UC President Comments on Prop. 111

The University of California Board of Regents has strongly endorsed the passage next June of Senate Constitutional Amendment 1, Prop 111, and the Governor and Legislature backed measure to modify the state's spending limit.

UCSD Extension services are hosting a free public forum entitled "Proposition 111: It's More Than a Gas Tax." This forum will take place on Tuesday, May 22 in Galbraith Hall Room 1438 from 6:30 p.m. to 9 p.m. The Moderator will be Glen Sparrow, a professor of public administration and urban affairs, at San Diego State University. Panelists will include Bruce Darling, associate vice chancellor for university relations at UCSD, Tom Larwin, general manager, San Diego Metropolitan Transit Development Board, Bill Nelson, president, Prospect Center Corp., Dick Rider, chairman emeritus, Libertarian Party of San Diego, Jim Ryan, executive director, San Diego Taxpayers Association and Grace Roos, transportation director, League of Women Voters of San Diego County ILO.

The resolution, adopted by the full Board of Regents at its meeting on Friday, July 21 at UC San Francisco-Laurel Heights reads in part, "The Traffic Congestion Relief and Spending Limitation Act of 1990 (Prop 111) will secure for the Governor and the Legislature the capacity to fund the University of California to meet its long-range planning goals, to maintain the distinction of its programs, and to continue providing access to qualified students."

Gardner said the University will join other major interest groups in the state to inform voters on how the ballot measure can help meet the long-term needs of the University and other state programs. Gardner also mentioned the impact that the measure could have on future students. "Unless Prop 111 is approved by voters, the simple, painful truth is: It will be impossible to continue the policies of the state and the University which ensure access to eligible California residents seeking undergraduate admission and which maintain resident student fees at relatively low levels."

"We will lend the full weight and support of the University to its approval," Gardner said, working with organizations such as the California Taxpayers Association, business, labor, city and county governments, the health community, transportation interests and the California State University, among others. "We will also be calling upon the University community -- students, faculty, staff and alumni -- to help get the message out," he said.

Through modifications to the state spending limit, Prop 111 would protect the schools and community colleges (K-14) by essentially guaranteeing budget growth while also ensuring adequate long-term support for other state-funded programs, including the University.

Prop 111 would generally maintain a 40/60 split between K-14 education and other programs in the state budget. It would change the spending limit formula to take into account real economic and population growth, rather than the present Gann limit which reflects only changes in inflation

Prop 111 and the UC System

Continued from Page 1

William B. Baker, UC vice president for budget and university relations, told the Regents that he estimates Prop 111 will permit annual budgetary growth averaging 8.5 percent for programs other than K-14.

"Given the University's projections of significant enrollment growth (63,000 more students by 2005 and the need for up to three new campuses), we can expect to do slightly better than this average and, therefore, would have an opportunity to meet our long-range needs," Baker said.

"The bottom line is this," he said, "With voter approval of Prop 111 the University's projected long-term growth is feasible. Without voter approval, it is not possible. Period."

Prop 111 is part of fiscal package approved by the Legislature and the Governor that also included a short-term solution to funding the 1989-90 state budget, and a proposal to raise the state's gasoline tax.

"This was a truly remarkable achievement when considering the range of issues involved and the disparity of viewpoints," Gardener said. "The Governor and legislative leadership deserve our thanks for having forged a workable solution to the state's fiscal needs. (State Schools) Superintendent (Bill) Honig also played a critical role in these discussions, and we appreciate the many hours he personally spent with UC's representatives in an effort to forge an acceptable compromise."

The result for fiscal 1989-90 is a \$2.09 billion general fund operating budget for UC, an increase of 5.8 percent or \$115 million over last year.

Baker said the actual expenditure

will increase about 10 percent in total because of several special actions, the most notable being a one-time diversion of the state's \$68 million contribution to the University's retirement fund to operating expenses. The money will be paid back with interest by the state, with no effect on retirement benefits.

The final state budget bill also included \$12 million to reduce the resident student fee increase from 10 to 3 percent. That action was made official by the Regents also on the July 21, 1989 meeting. The result will be an average increase of \$42 in resident student fees to \$1,476 for the academic year. Students also pay \$120 a year in miscellaneous campus fees. Out-of-state students additionally pay a tuition of \$5,799, up 17 percent for 1989-90.

The University will also receive \$188 million in state funds for its building needs.

Gardener said planning is now underway for the 1990-91 University budget. Assuming voter approval of the change in the state spending limit in June, the budget request, he said, will be consistent with recent years in seeking funding for enrollment increases, fixed costs and selected program improvements.

Those improvements will include expanded funding in areas such as additional research assistantships for graduate students, research in ethnic cultural diversity, increases in library acquisitions, expanded affirmative action programs, continued improvements in instructional programs, and improvements in building maintenance, which has been severely underfunded compared to state standards for many years.

Graduating Seniors

GRADUATION ANNOUNCEMENTS

Announcements are available upstairs at the University Bookstore. They can be purchased for \$.65 each or 10 for \$5.75.

CAPS AND GOWNS

Fitting and all orders for caps and gowns must be made at the University Bookstore beginning June 4-16th. The cost for the rental is \$14.00.

COMMENCEMENT

Ceremony is on Sunday, June 17, 1990 at 2:30 p.m. at Stonehenge. All participating seniors must meet at the Revelle Plaza at 1:30 p.m. for special announcements and line up. Reception will follow immediately after the ceremony.

IMPORTANT



CLO's Encounters

Love is in the Air

Spring is here!!! It is the time for baseball, growth, and most importantly, Love. For some of us, though, the feeling never seems to manifest itself...or it seems not to. You tend to get moody and sometimes withdrawn into your studies in an effort to forget what is happening around you, or you actively go seeking it and find that it is never quite there. That is sort of the way things are sometimes. You get used to them. It really makes you wonder, though. Is there someone out there for you, waiting to receive the warmth of emotion you are prepared to give. Let this be the topic: Can love actually be found?

Love, Amor in French, Ai in Japanese, it means the same in every language, but can have a lot of different levels. Physical love, lust, whatever you wish to call it is primal. An urge to procreate, with or without purpose. Finding that isn't really a matter of interest to some. Put a personal in the Koala, go to a dating service with that in mind, or if you are really desperate...go to Tijuana. That, however, is not the spring fever that most look for. What they look for is a sense of belonging, an end to the loneliness that seem to fill their minds and lives. This loneliness can be an extreme cause of pain...and can drive people to great lengths to get the needed attention. Let's look at the symptoms and possible remedies to this affliction.

You ever get the feeling that no one cares? That there is no one who will look at you as a suitable mate? This is a definite downer for most people. It tends to make you look at yourself in a negative way, like you are some kind of freak. It's not like that at all. Most of your friends will tell you so. You have to realize that no one is perfect and that you, like that stereotypical jock who struts his stuff in front of the ladies, are just as perfect. Ok, maybe not as muscular or good athletically, but you have some strengths that he can never have. Ladies, look at yourself in the mirror. You think yourself overweight, or not as well endowed? That is a cultural thing that has no bearing on the things you can do or the people who think highly of you. That certain someone will love you no matter how you look. It is all a matter of self-confidence, how well you believe in your abilities and your physical comeliness. There are some people who I

would not choose as a suitable mate just because they are too good. They are physically attractive, almost a perfection of beauty, yet they lack the feelings or emotions to suit me. In short they could care less about some scrawny guy who never parties and isn't buff. Who cares about them? It's like looking in a magazine full of models, who would know you anyways. Look instead to those who seem to show some interest in your personality or skills. I am not a psychologist, but I can tell you that those are the ones worth caring for. If you're still after the model types, go ahead and dream...you may even get lucky!

Ever feel that you have too many friends, and that you rather have that special someone instead? Come on! You can never have too many friends...that just isn't so. Ok, so they're not like a boyfriend or girlfriend, but believe me, a friend is something that is always forever. Not like some relationships, that seem to fragment and break away. A true friend, whether of the same sex or opposite, can always be a comfort, a person to talk to when there doesn't seem to be anyone else. I know it's hard sometimes, I could probably cite quite a few times in my life when I felt that way. It's just not worth the grief of worrying about what is and what may be. Think about all of your friend and how luck you (and they) are. It's a good life and it's worth sharing it with everyone.

How about that person whom you've been following with your eyes and heart and doesn't seem to know you exist. What about them? If they don't see you forget them...they don't matter and probably never will. Like I said before, look at the ones who do care, and try to be there for them. Chances are, if you're still worrying about them, you're wasting your time.

Life and love can be good for all of us, but here it isn't worth the trouble or hassle. Your studies could suffer if you decide to put too much into your endeavors. Best to stop looking. It is from the best possible sources, that if you stop looking for it, most of the time it will come looking for you and then you'll be happy. Hope this will help someone...
Til next time....

Revelle College Council

Elections 1990-91

Next year the individual's pictured here will represent Revelle College Council. Six members were elected in the A.S. elections, but two elected members resigned allowing the current council time to appoint two more members for next year.

The current council appointed Bill Mohler and Mike Aklufi to the open positions. Only Meredith Knobler and Mike Aklufi are incumbents, so the Council will be almost starting fresh. Mike was this year's Frosh appointee to the council.



Brad Fields



Kiki Lowrey



Toni Cacciatore



Meredith Knobler



Mike Aklufi



Bill Mohler

Ren Faire



Revelle College Presents:

An Evening

with

Ray Bradbury

"Creativity Personified"

Tuesday, May 29
8 pm, Revelle Cafe

REVELLE TALENT SHOW GALA May 17, Thursday 6 p.m. Stonehenge

Ren Faire Notes



by Helen Tse

revellations

Editor-in-Chief Leesa K. Light
Photo Editors Erin Adams, Teresa Baile
Staff Writers Mary Ann Nogaki, Ken Schrepfer, Helke Farin, Daphne Galang, Chien Tang, Tanya McGraw, Lisa Deines, Toni Cacciatore, Rosalind Young
Cartoonist Helen Tse
Photographers Leesa K. Light, Chien Tang

Opinions expressed in *Revellations* in no way represent the opinions of UCSD, Revelle College or its staff. They are the opinion of the writer only. To respond to any of the material found in *Revellations* write to Leesa K. Light, B-021, La Jolla, CA 92093.

International Events

Are you trying to get through your Revelle foreign language requirement? Or, are you interested in improving your foreign language skills before you go EAP? Or, do you want to meet foreign students and listen to stories of international adventure? Whatever the case may be, join us for Language Tables, every Tuesday night from 5:00-7:00 in W.N.H.? Language Tables are conducted in Spanish, German, French, and Japanese. There's no better way to learn a foreign language than to speak with natives and practice casual conversation over dinner.

Special Notes

This year's Watermelon Queen Pageant will be held on May 23. Applications for the pageant are due on May 21 so you should start thinking of some fun and exciting ideas for your individual or group entry. Remember, the first place winner not only gets to be the reigning Watermelon Queen, but it involves a \$100 prize. Contact the Revelle Dean's Office for applications and more information.

Get in shape for summer NOW!! Aerobics in the Main Gym at 9 p.m. on Mondays and Wednesdays and Wednesdays in Why Not Here? at 6 p.m. The aerobics in WNH? are low impact.

The last issue of *Revellations* will appear on May 30 so please turn any last minute copy into the Dean's Office by May 22. Anyone interested in participating on next year's newspaper staff should contact the Dean's Office.

Have you ever had a problem that you didn't feel comfortable talking about to any of your friends? Have you ever had any questions about alcohol or substance abuse? If you have, then there is a place on campus for you to go. Underneath Argo Hall, on the North wall, is a room where two people can help you. Crystal Shannon is a Psychology Intern for Revelle College who is available for you to talk to about any problems you might have. She is

excellent for roommate conflicts, personal conflicts, relationship problems, and any personal problems you may have, including possible eating disorders, and self-esteem. It is an informal setting and she can give referrals to other professionals if needed. Her hours are posted on the door of Argo 104/105, and most of the time, you can just drop in. If you want to make sure that she is free, you can set up an appointment through the Revelle Dean's office at 534-3493.

Mark Wintriss is a Peer Counselor on campus who specializes in alcohol and substance abuse. He gives straight answers to tough questions. If you are concerned about yourself or someone you care about, you can ask him questions and get advice on how to get help. His office hours are also located on the door under Argo and you can drop in during any of his hours.

Remember, you can ignore problems and pretend they aren't there, but they don't do away. They come

back when you need them the least. Deal with them now, before they become too serious.

Look out and get ready for "Suite Feuds" starting Wednesday, May 23 at Why Not Here?. Sign-up early in WNH? to participate and win some great prizes. Can you pick the best answer to that survey?

Former UC President, Clark Kerr, will be the speaker at this year's Revelle College Honors Banquet. Kerr, along with Roger Revelle was instrumental in the founding of First College, which later was renamed for Dr. Revelle. Kerr was in the midst of much of the turmoil that plagued the UC system during the 60's. However, during his term of office, he organized and instituted the idea of the master plan for the systemwide UC's. He also was fundamental in the founding of three new UC campuses.

Clear your schedules for this exceptional event. The well-known science fiction writer Ray Bradbury will be speaking in the Revelle Cafeteria. (Yes, you read that correctly!) Bradbury will speak May 29 at 8 p.m. in Anchorview on the subject of "Creativity Personified." Dr. Paul Saltman will introduce Bradbury as he did almost 20 years ago when Bradbury spoke in the cafeteria.

ACCENT ON ACADEMICS

Dropping a course and the "W" grade:

A student may drop a course before the end of the ninth week of instruction by filing the appropriate form with the Registrar after first notifying the instructor and/or department.

If you drop a course after the end of the fourth week of instruction and before the end of the ninth week of instruction, the Registrar will assign a final grade of "W" for that course.

After submitting an add/drop card for any reason, always request a class confirmation at the Registrar's Office, and CHECK IMMEDIATELY to verify that the add/drop has been processed correctly. Keep the receipt of the add/drop for your records.

You may not drop a course after the end of the ninth week of instruction (June 1, 1990).

When considering dropping a course,

keep in mind the minimum progress requirement of 36.0 units per academic year.

Planning and Scheduling:

The fall '90 Schedule of Classes should be available at the Bookstore or the Revelle Sundry Store on May 4. Purchase a copy so that you can begin planning your fall classes.

Telephone Registration:

Special needs students, National Merit and Regents Scholars, Early Admissions Honors and Honors Workshop students have Telephone Priority Registration for continuing students is May 9-25, 1990. You will receive your appointment time in the mail. If you do not receive an appointment time, the Registrar's probably does not have a current address for you. You will have to go to the Registrar's Office to get your appointment time. Some majors require faculty advisor's approval before you register. If your

personal access codes is not enclosed with your appointment time, you probably need your department advisor's approval (not a college academic counselor's approval). This means you must see the department advisor to get your personal access code. The following majors require prior approval:

Linguistics (all levels)
Physics (Juniors and Seniors)

Advising Hours:

From Monday May 7 through Friday, May 25 academic counselors will be available on a drop-in basis in order to better serve more students. Juniors and Seniors will be given priority May 7-15, Sophomores and Freshmen have priority May 15-25. For help with academic planning, come by the Provost's Office, open 8 a.m. - 12:30 p.m., and 1 - 4:30 p.m.

Graduating Seniors...now what??

For those of you who haven't decided

what to do after college, the Career Services Center has many workshops planned to help you get started. Some topics include: Marketable Resume; Interviewing Skills; On-Camera Practice of Interviewing Skills; and Finding the Hidden Job Market. If these workshops sound interesting to you, go the Career Services Center or call 534-3750 for more information.

Graduating Seniors:

Check the Revelle Plaza kiosk periodically to see if your name is listed on the "graduating senior" list. If your name has been removed, check with us to see what problem(s) have developed.

Drop-In Advising

May 15 - 25

Revelle Committees Spring 1990

For more information on these committees feel free to call the numbers listed below or the Dean's office. Most committee meetings are open to the public, but it is always best to check with the chair listed below.

Committee	Phone	Day	Time	Location
Revelle College Council (RCC)	Armin Afsahi 457-2184	Mon	4:30 p.m.	Provost/Dean Office
Commuter Advisory Board (CAB)	Toni Cacciatore 534-2519	Fri	11:00 a.m.	Provost/Dean Office
Curriculum Review	Steve Brown 459-7718	Wed	4:00 p.m.	Provost/Dean Office
Faculty-Student Programming Board (FSPB)	Lisa Deines 534-3492	Mon	2:00 p.m.	Commuter Lounge
Graduation	Luis Ramirez 453-5737	Thu	10:00 a.m.	Provost/Dean Office
Judicial	not yet decided 534-3492	Fri	12:00 p.m.	Provost/Dean Office
Noon Programming Board (NPB)	Rosalind Young 534-3492	Thu	4:00 p.m.	Publicity Room Argo
Organizational (ROC)	Armin Afsahi 457-2184	Tue	9:00 a.m.	Provost/Dean Office
Program Board (RPB)	Mona Saint 534-3492	Wed	5:00 p.m.	Provost/Dean Office
Revellations	Leesa Light 534-2519	call	call	Commuter Lounge
Students Acting For the Environment (SAFE)	Laura Murray 558-8514	Tue	6:00 p.m.	Revelle Formal Lounge
Student Committee for Cultural Appreciation (SCCA)	Tracy Johnson 451-3899	Mon	5:45 p.m.	Resident Dean's Office