

*Report and Index of
Underway Marine geophysical Data*

Centennial

Leg 08

(CNTL08RR)

R/V Roger Revelle

(Issued May 2004)

Ports:

San Diego, CA (19-May-03)

to

San Diego, CA (22-May-03)

Chief Scientist: Mark Zumberge
University of California, San Diego
mzumberge@ucsd.edu

Computer Tech - Scott Allen
Resident Tech - Ron Comer

Post-Cruise processing and report preparation by the
Shipboard Technical Support Group,
Scripps Institution of Oceanography
La Jolla, CA 92093-0223

Note: *This is an index of underway geophysical data edited and processed after the completion of the leg and is intended primarily for informal use within the institution. This document is not to be reproduced or distributed outside Scripps without prior approval of the chief scientist or Shipboard Technical Support, Scripps Institution of Oceanography, La Jolla, California 92093-0223*

STS Cruise ID#300

Report and index of Navigation and Underway Geophysical Data

Contents:

Index Chart - give track of cruise leg, dates, ports.

Track Charts - annotated with dates and hour ticks.

Profiles - depth, magnetic and gravity free air anomaly vs. distance.

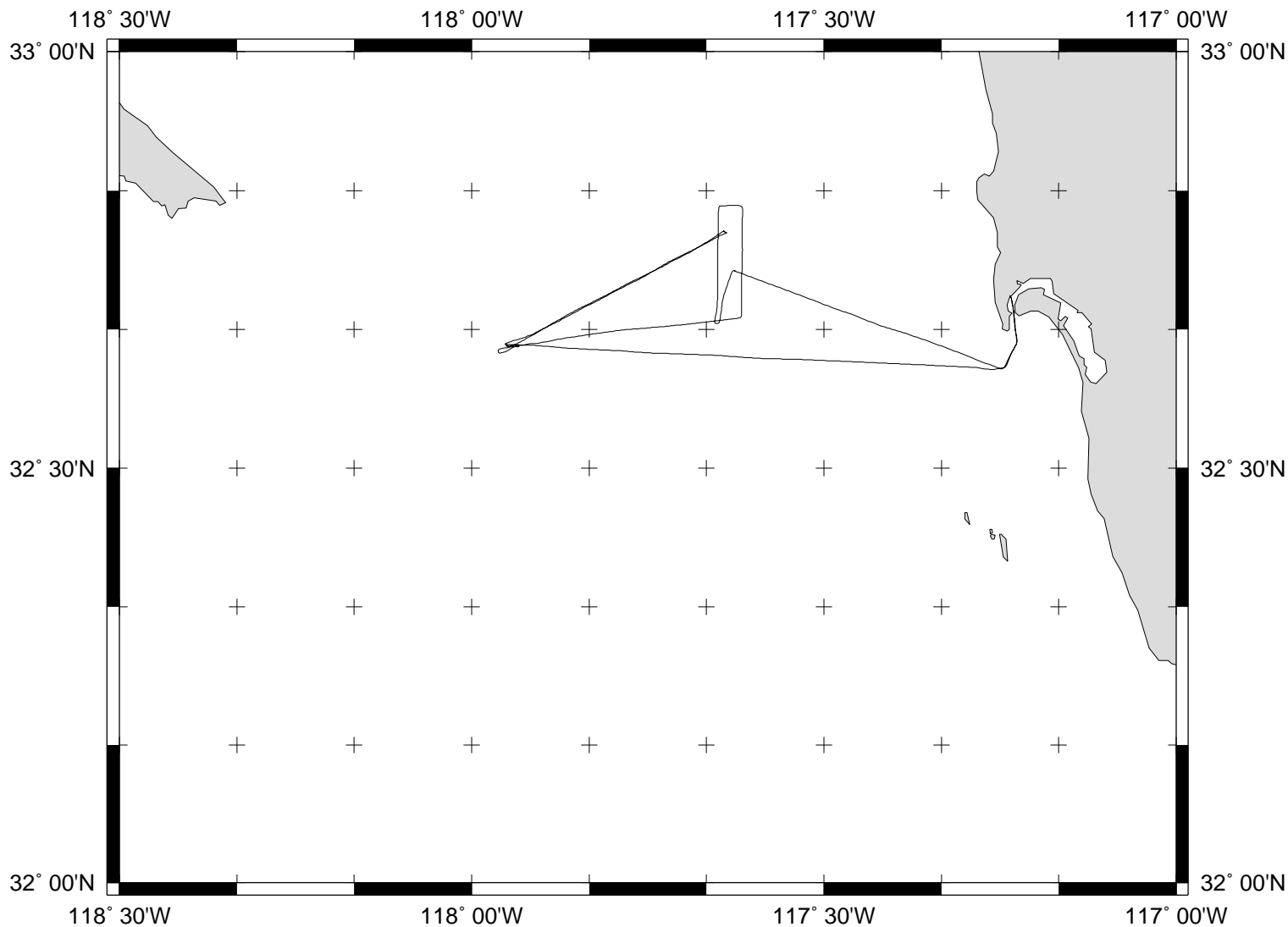
Sample Index - list of begin/end times and positions of all underway records as well as samples and measurements from other disciplines collected on the leg.

Note:

For information on the availability of this current digital data as well as archived digital data contact:

Stephen P. Miller
Geological Data Center
Scripps Institution of Oceanography
La Jolla, California 92093-0220
Phone: (858) 534-1898
Internet email: spmiller@ucsd.edu; or his website: <http://SIOExplorer@ucsd.edu>

Rev 05/2002



CENTENNIAL EXPEDITION LEG 8 (CNTL08RR)

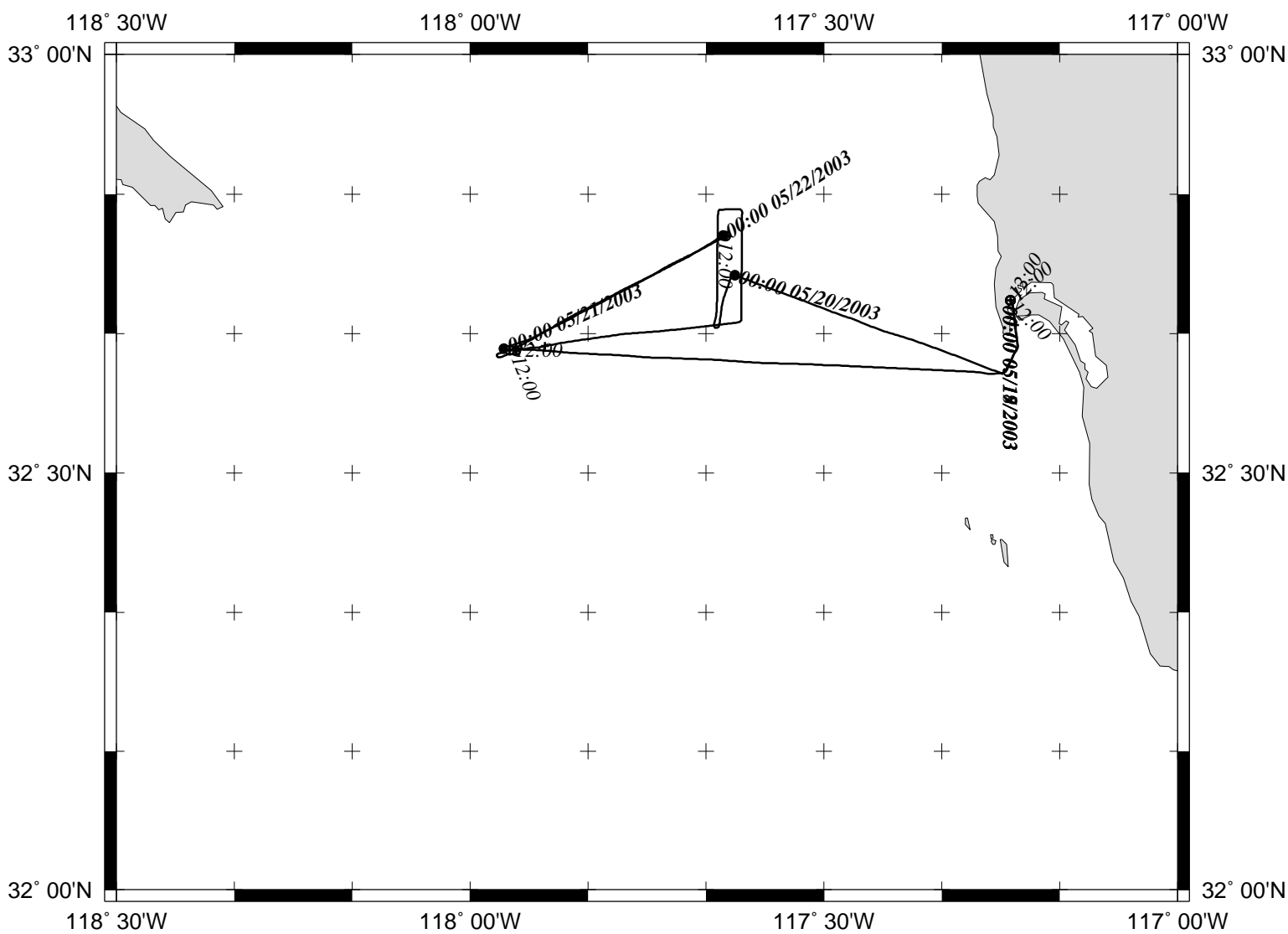
=====

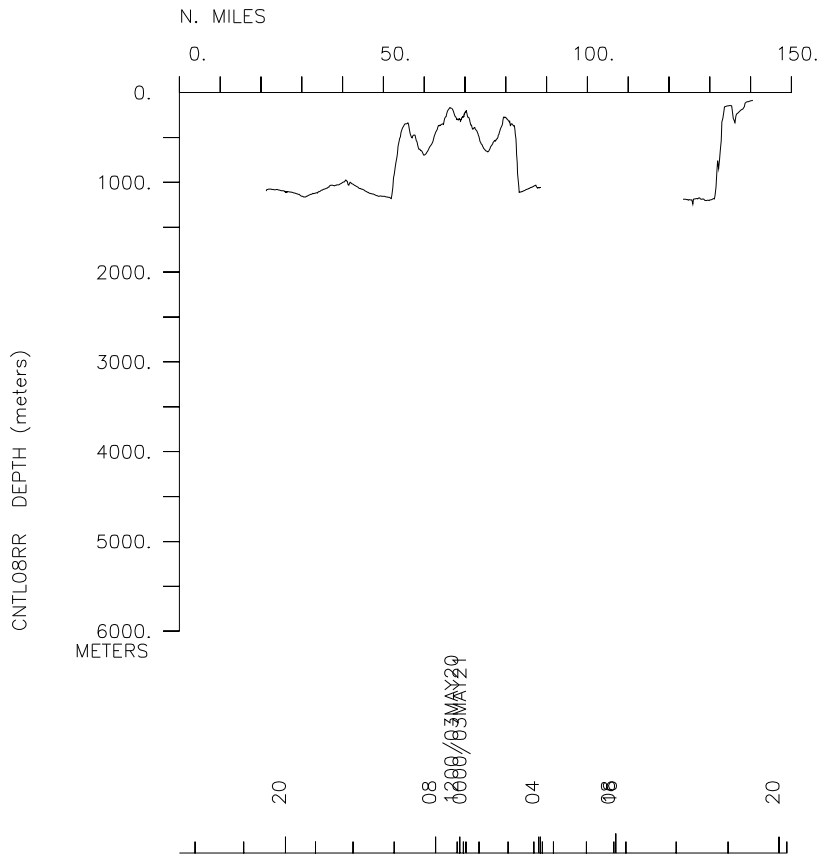
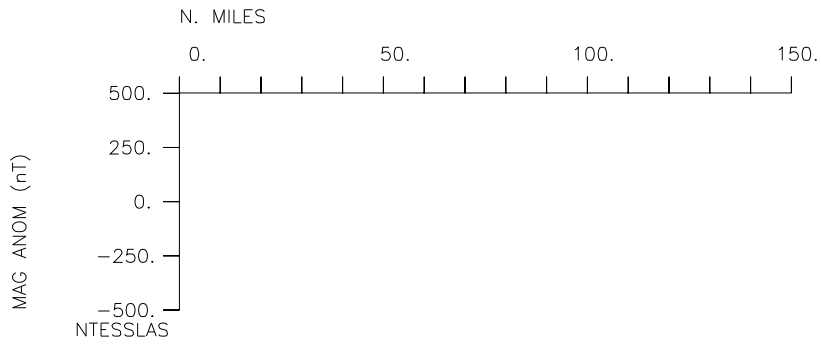
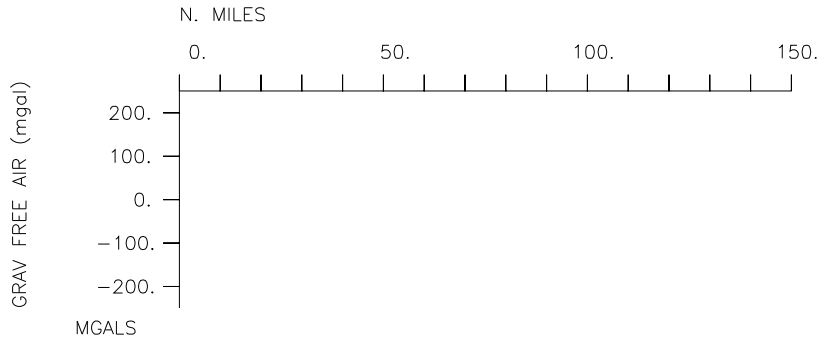
CHIEF SCIENTIST: Mark Zumberge, Scripps Institution
PORTS: San Diego, Calif. - Honolulu, Hawaii
DATES: 19 - 22 May 2003
SHIP: R/V Revelle

TOTAL MILEAGE OF UNDERWAY DATA COLLECTED

Cruise - 148 miles	Magnetics-none collected
Bathymetry - 85 miles	Seismic Reflection-none collected
Multibeam - 85 miles	Gravity-collected but not included

CNTL08RR





**** Ports ***

1718 190503 0 LGPT B San Diego, Calif. 32-42.40N 117-14.17W g CNTL08RR
 2048 220503 0 LGPT E San Diego, Calif. 32-47.01N 117-38.41W g CNTL08RR

**** Personnel ***

#	*****NAME*****	*****TITLE*****	*****AFFILIATION*****	**CRID**
PECS MPL	Zumberge, M.	Chief Scientist	Scripps Institution	CNTL08RR
PECS MPL	Spieß, F.	Chief Scientist	Scripps Institution	CNTL08RR
PERT STS	Comer, R.	Resident tech	Scripps Institution	CNTL08RR
PERT STS	Engstrom, T.	Resident tech	Scripps Institution	CNTL08RR
PECT STS	Allen, S.	Computer tech	Scripps Institution	CNTL08RR
PESP MPL	Sasagawa, G.	Scientist	Scripps Institution	CNTL08RR
PESP GRD	Craig, V.	Observer	Scripps Institution	CNTL08RR
PESP SIX	Sharpe, D.	Engineer	Oceaneering, San Diego	CNTL08RR
PESP SIX	Jones, W.	Engineer	Oceaneering, San Diego	CNTL08RR
PESP MPL	Waters, N.	Development tech	Scripps Institution	CNTL08RR
PESP SIX	Warford, D.	Engineer	Oceaneering, San Diego	CNTL08RR
PESP MPL	Husmann, E.	Development tech	Scripps Institution	CNTL08RR
PESP IGPP	Chen, F.	Development tech	Scripps Institution	CNTL08RR
PESP IGPP	Norenberg, M.	Development tech	Scripps Institution	CNTL08RR

**** NOTES ***

#An 'X' in the (B)egin/(E)nd column following the sample code indicates no #sample or data recovered. A 'C' indicates continuation of data collection #from before the beginning or after the end of a particular leg, (moored #bottom instruments, for example.) The number appearing in the columns #between the sample identifier and the disposition code, for many sample #entries, is the water depth in corrected meters.

#GMT	DDMMYY	SAMP	B	SAMPLE	DISP			p	CRUISE
#TIME	DATE	TZ	CODE	E IDENTIFIER	CODE	LATITUDE	LONGITUDE	c	LEG-SHIP
#-----	---	---	---	-----	---	-----	-----	-	-----

**** Underway Data Curator - Shipboard Technical Support Group ext.41899 ***
 **** Digital Data Curator - Geological Data Center, S.P. Miller, ext.41898 ***

**** MultiBeam Data (vertical beam and side scan) ***

1928 190503 0 MBSR B vbeam & sidescan GDC 32-42.56N 117-32.31W g CNTL08RR
 1929 210503 0 MBSR E vbeam & sidescan GDC 32-37.31N 117-18.04W g CNTL08RR

**** Digital Gravity ***

1928 190503 0 GVDD B digital gravity GDC 32-42.56N 117-32.31W g CNTL08RR
 1929 220503 0 GVDD E digital gravity GDC 32-37.31N 117-18.04W g CNTL08RR

#GMT	DDMMYY	SAMP	B	SAMPLE	DISP				p	CRUISE
#TIME	DATE	TZ	CODE	E IDENTIFIER	CODE	LATITUDE	LONGITUDE		c	LEG-SHIP
#-----	--	-----	-----	-----	-----	-----	-----	-----	-	-----
*** Acoustic Doppler Current Profiler ***										
1547	220503	0	ADCP	current measurements	GDC	32-38.83N	117-56.64W	g		CNTL08RR
*** Autonomous Towed Vehicle ***										
2043	190503	0	DSFV	Test tether cable	MPL	32-44.21N	117-37.55W	g		CNTL08RR
1601	200503	0	DSFV	B deployed ATV	MPL	32-38.78N	117-56.08W	g		CNTL08RR
1956	200503	0	DSFV	E on deck ATV	MPL	32-38.78N	117-56.03W	g		CNTL08RR
2109	200503	0	DSFV	B deployed ATV	MPL	32-38.80N	117-56.65W	g		CNTL08RR
2246	200503	0	DSFV	E on deck ATV	MPL	32-38.93N	117-57.09W	g		CNTL08RR
1605	210503	0	DSFV	B deployed ATV	MPL	32-47.00N	117-38.30W	g		CNTL08RR
1626	210503	0	DSFV	E on deck ATV	MPL	32-47.00N	117-38.30W	g		CNTL08RR
1825	210503	0	DSFV	B deployed ATV	MPL	32-47.00N	117-38.30W	g		CNTL08RR
1616	220503	0	DSFV	E on deck ATV	MPL	32-38.83N	117-56.64W	g		CNTL08RR
*** Expendable Bathythermographs ***										
0421	200503	0	BTXP	MK12 # 2 Fast_Deep	GDC	32-43.71N	117-38.02W	g		CNTL08RR
#				End Sample Index						CNTL08RR