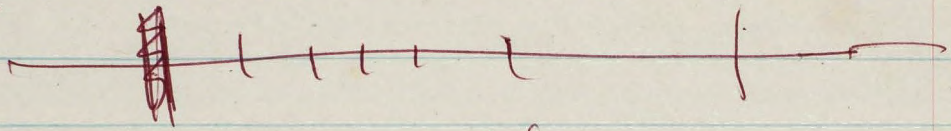
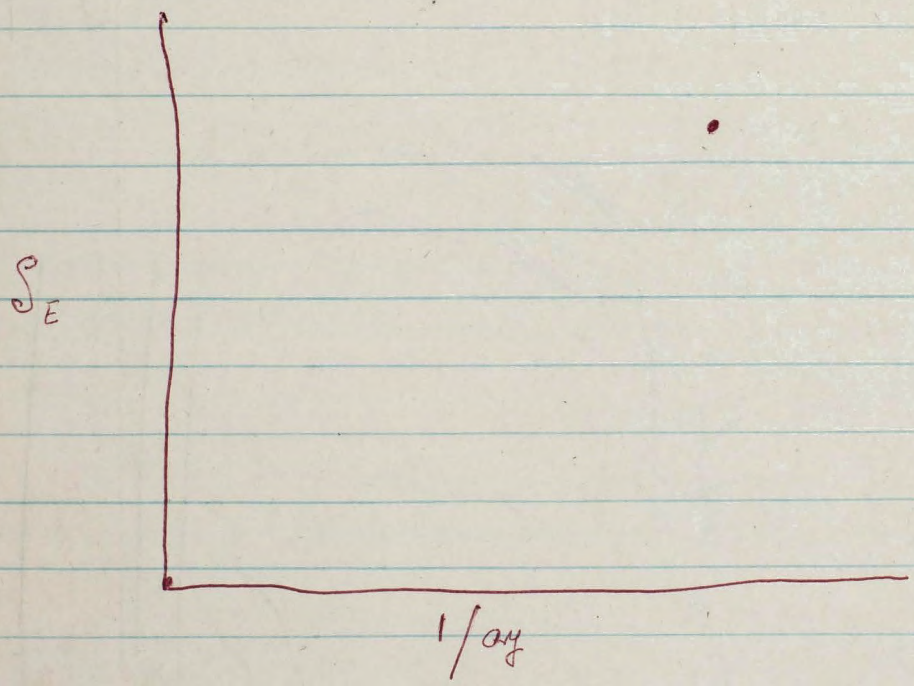


Mass Apr 20/57 N.Y.H.
Pack Bruce Ames Bethesda (Hort)



Vis to line class
all our pres present



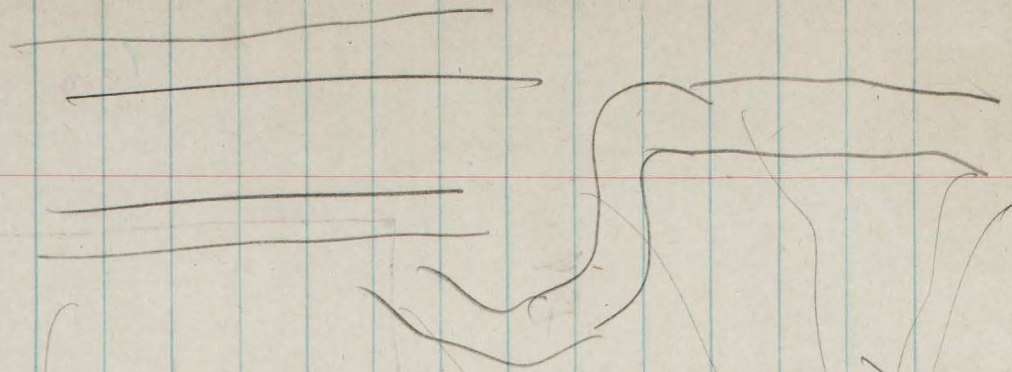
hist 1.0
0.5

gut lumen

capillary

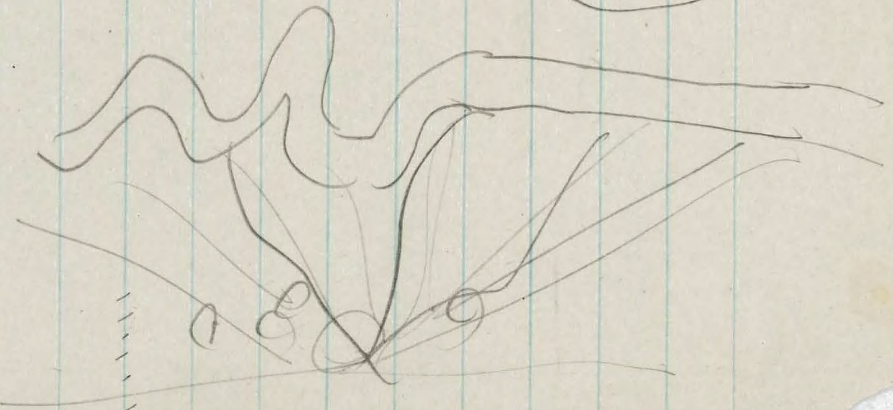
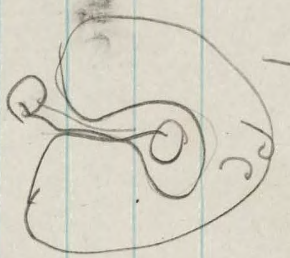
capillary

interstice



mesothelium

muscle is
lymph duct



$$\int_0^t \frac{e^{-\beta t}}{\beta} dt = [1 - e^{-\beta t}] \beta$$

~~u du~~ $\frac{u du}{dt} + \frac{v du}{dt}$

$$\frac{d}{dt} [e^{-\beta t} - \beta t e^{-\beta t}]_0$$

$$\int t e^{-\beta t} = \int e^{-\beta t} - \beta \int t e^{-\beta t}$$

$$(1 - \beta) \int t e^{-\beta t} = \int e^{-\beta t}$$
$$= [1 - e^{-\beta t}] \beta / (1 - \beta)$$

$$\frac{\int t e^{-\beta t}}{\int e^{-\beta t}} = 1$$

Apr 26/57

Werner says: Perdee incoli
when Uracil behaves like histidine
story, -

#

Rose Apr 27/57 [Lerner graph]

For mult help drops "Metabolism"
Vol 6 No 6 Nov/56 "Sulphabenz"
CO₂ effect "Nature" Runde & Whitby Vol 179.
p. 473/57
↓ 25% burst.

Randerson
~~Proter~~ Rats, Threonine low trypt. low
more Threonine - less grows but if
you add nicotinamide it reverses
Wisconsin - Harper - Elvehjem -
Rats Fulbright 1956

By kidney metabolism: Len Right
Ascher = Holzer Christiansen Widjyan Sharp & Solam
Ann Arbor Urbilium Pratt

Valin - Isomarine Lueding
Mithamine Levene - Valine

Hill (Terrell) ~~XXXXXX~~ Novel Med Res *

Angus
~~William Frankel~~
Las Alamos
John Stone

Henry Cohen
Berkeley - Rad Lab.

Howard Curtis
Brookhaven

~~Carlson~~
Wahsington Seale

Rochester
Hush
rats

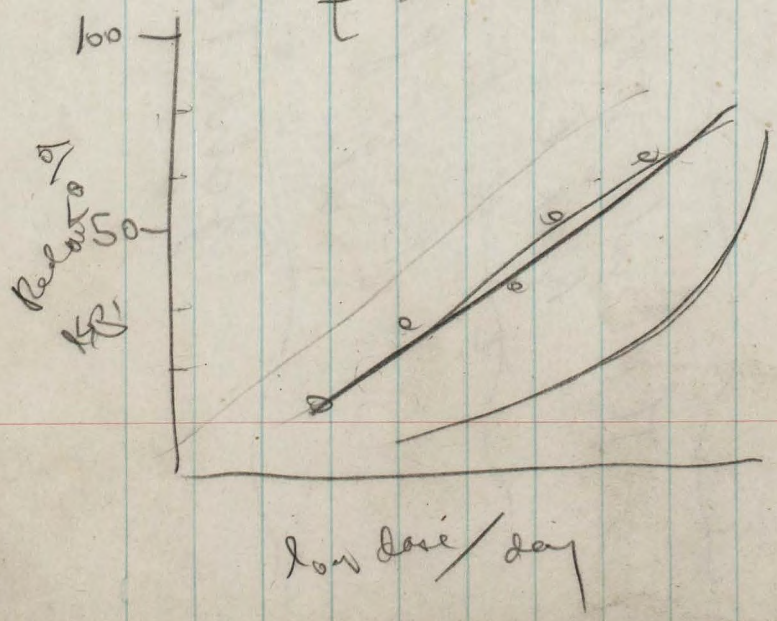
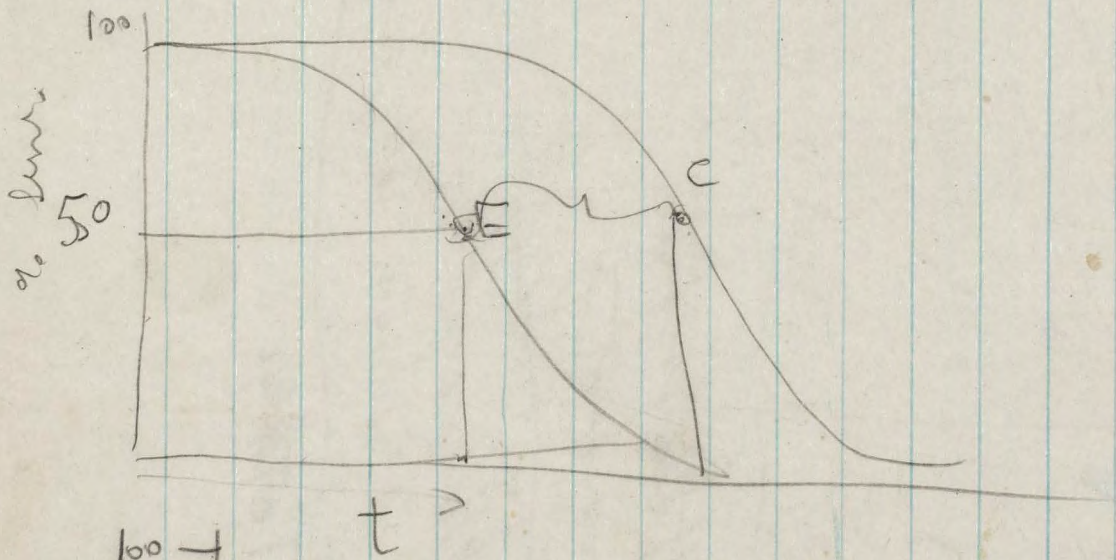
long
route

The Biology of Senescence
Alex Carnant

~~2. Nutritional Biology?~~

Bacq of Alexander
Wise
Charles Beatty Aust.

John Totter



P_1
 ~~P_2~~

\downarrow
 \downarrow
 \downarrow
Sheldon Wolf

~~T~~
 T

\downarrow

~~T~~

Fach

(X)

α^2

single break - double break

(H)

double break - tridescantia

X ray
of ray

$$\alpha^2 + \beta^2 \left[\frac{2506350}{101} \right] \frac{\alpha}{\beta} \approx \frac{300}{100}$$

membrane (not done)

$$\left(\frac{500150}{101} \right) \frac{100}{1}$$

curly Smith & Daniels

translucent - Genes 1957

litter size - reduction

due to X ray - 1 2 2 2

irradiate (one ovary only) (Kaplan-Stampfer Henry)

Experiment:

irradiate slowly brain only.

Mice: 100 with ϵ (edema constant)
of rays (both effects equal)

(quadratic effect more in p. per rays)

X rays 300 r with ϵ (time constant)

This means if ray you may give
10 r per ϵ and 5% will be quadratic
X rays are better from this point of view.

Lifespan and metabolic

Review: Samuel Brady (Bank)

~~Abnormalities of growth~~

~~hapi~~
Mature 1/2 mouse

Box A-2

- (12) Block fund, applic. 1958
- (13) Alumni Assoc. MIT, July 1958. Draft
Disarmament - (Out)
- (14) Various political writings, Bulletins etc.
(Choose material) Pax Russo-Americana
Drafts 4/24/58 + 7/16/58 with many corrections
- (15) Notebooks Biology, 1957. Chicago.
15 a, b, c, d, e, f
- (16) Pugwash, 1957 Drafts - many handwritten corrections
- (17) Bulletins At. Sci -
Calling for a Crusade
- (18) Diary of Dr. Paves } Minico versions,
Grand Central St. } Mark Gable Foundation

Chem. Eng. News Dec. 3rd
Doc No 20771, 396

Phisior
Di amino pimelic - lysine