

REPORT AND INDEX OF  
UNDERWAY MARINE GEOPHYSICAL DATA

**BOOMERANG EXPEDITION**

**LEG 3**

**(BMRG03MV)**

R/V MELVILLE

(Issued April 1996)

**Ports:**

Chatham Is., New Zealand (11 December 1995)

to

Dunedin, New Zealand (3 January 1996)

**Chief Scientist: Ellen Druffel**

(University of California, Irvine)

Resident Marine Technician - Bob Wilson

Computer Technician - Ron Moe

Post-Cruise Processing and Report Preparation by the  
Geological Data Center, Scripps Institution of Oceanography  
La Jolla, California 92093-0223

Data Collection and Processing Funded by:  
NSF OCE94-00707

**NOTE:** *This is an index of underway geophysical data edited and processed after the completion of the cruise leg and is intended primarily for informal use within the institution. This document is not to be reproduced or distributed outside Scripps without prior approval of the chief scientist or the Geological Data Center, Scripps Institution of Oceanography, La Jolla, California 92093-0223*

GDC Cruise I.D.# 267

**REPORT AND INDEX OF NAVIGATION  
AND UNDERWAY GEOPHYSICAL DATA**

Processed by the Geological Data Center  
Scripps Institution of Oceanography

**Contents:**

**Index Chart** - gives track of cruise leg, dates, ports, and mileage of each type of data collected.

**Track Charts** - annotated with dates and hour ticks.

**Profiles** - depth, magnetic and gravity free air anomaly vs. distance. (Sections of track with seismic reflection data have a wide black line along the bottom of the profile.)

**Sample Index** - list of begin/end times and positions of all underway records as well as samples and measurements from other disciplines if collected on the cruise leg.

**NOTE:** One or more of the underway data types may not be collected on a given cruise leg. For information on the availability and reproduction costs of data in the following forms, contact S.M. Smith, Curator, Geological Data Center, Scripps Institution of Oceanography, La Jolla, California 92093-0223.

Phone: (619)534-2752, FAX: (619)534-5306, Internet email: [ssmith@ucsd.edu](mailto:ssmith@ucsd.edu)

1. Files on Exabyte, DAT or 1/2 inch magnetic tape:
  - a) Separate time series ASCII files of navigation, single beam depth, gravity and magnetics.
  - b) These same data in a merged ASCII file in the MGD77 Exchange Format.
  - c) SeaBeam depth data (binary, Sun byte order) in SIO Swath Bathymetry Format (not available on 1/2" tape).
  - d) SeaBeam Sidescan data (not available on 1/2" tape).
2. Microfilm (35 mm flowfilm) or hard copies of:
  - a) Underway watch log book
  - b) SeaBeam vertical beam profile/Sidescan records.
  - c) Echosounder records - 3.5 kHz frequency.
  - d) Magnetometer records.
  - e) Seismic reflection profiler records.
3. Navigation listing with times and positions of fixes and course and speed changes.
4. Plots:
  - a) Copies of archived track plots.
  - b) Copies of archived SeaBeam contour plots.
  - c) Custom plots in Mercator projection:
    - 1) Track plots.
    - 2) SeaBeam depth contour plots.
    - 3) Depth, magnetic or gravity values printed or profiled along track.

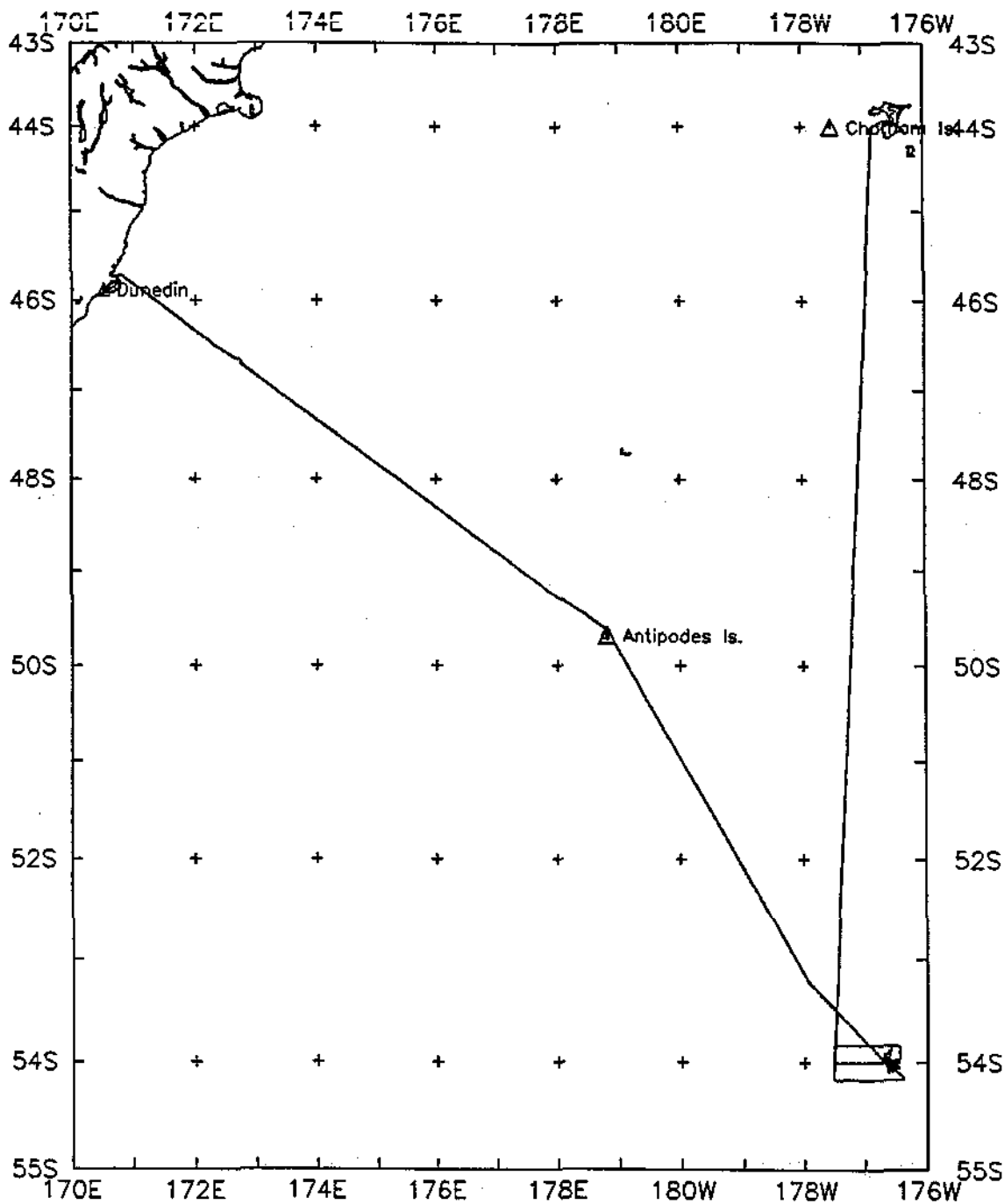
rev 7/93

## **Sea Beam 2000 Data Collected in Ancillary Mode**

In the absence of funding for Sea Beam operations on this leg, Sea Beam data were collected in "ancillary mode". In this mode of operation, no Hardware Technician or SB/Underway Processor were on board and the types of realtime records and post-processed data products are reduced from those available under the fully funded mode.

The Sea Beam data remain proprietary to the SIO Shipboard Technical Support Group, not the chief scientist.

May 1993



\*

**BOOMERANG EXPEDITION LEG 3**  
 =====

**CHIEF SCIENTIST: Ellen Druffel**

**University of California, Irvine**

**PORTS: Chatham Island, New Zealand - Dunedin, New Zealand**

**DATES: 11 December 1995 - 3 January 1996**

**SHIP: R/V Melville**

**TOTAL MILEAGE OF UNDERWAY DATA COLLECTED**

**Cruise - 1899 miles**

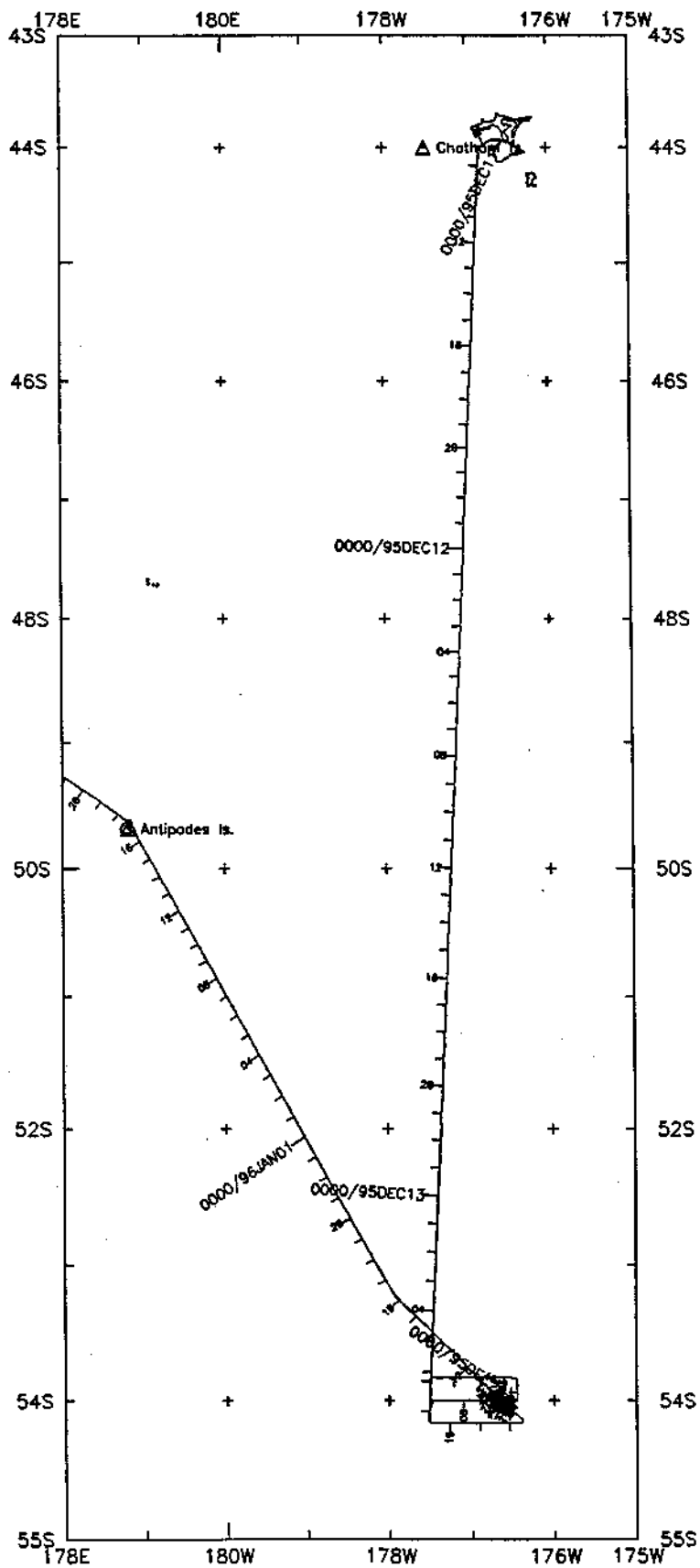
**Magnetics - 897 miles**

**Bathymetry - 1371 miles**

**Seismic Reflection - none collected**

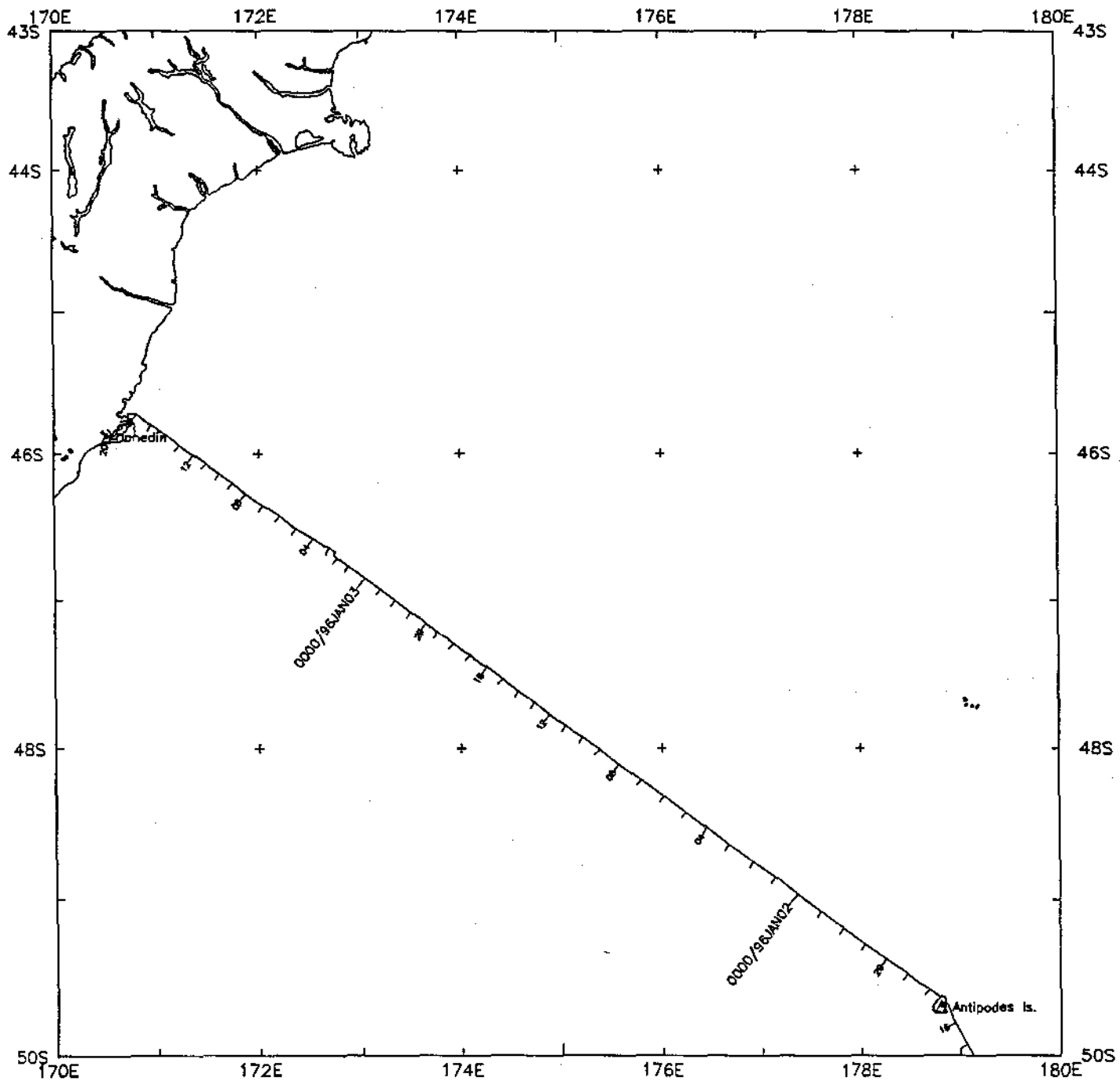
**Sea Beam - 1371 miles**

**Gravity - 1659 miles**



BOOMERANG Leg 3 (BMRG03MV)

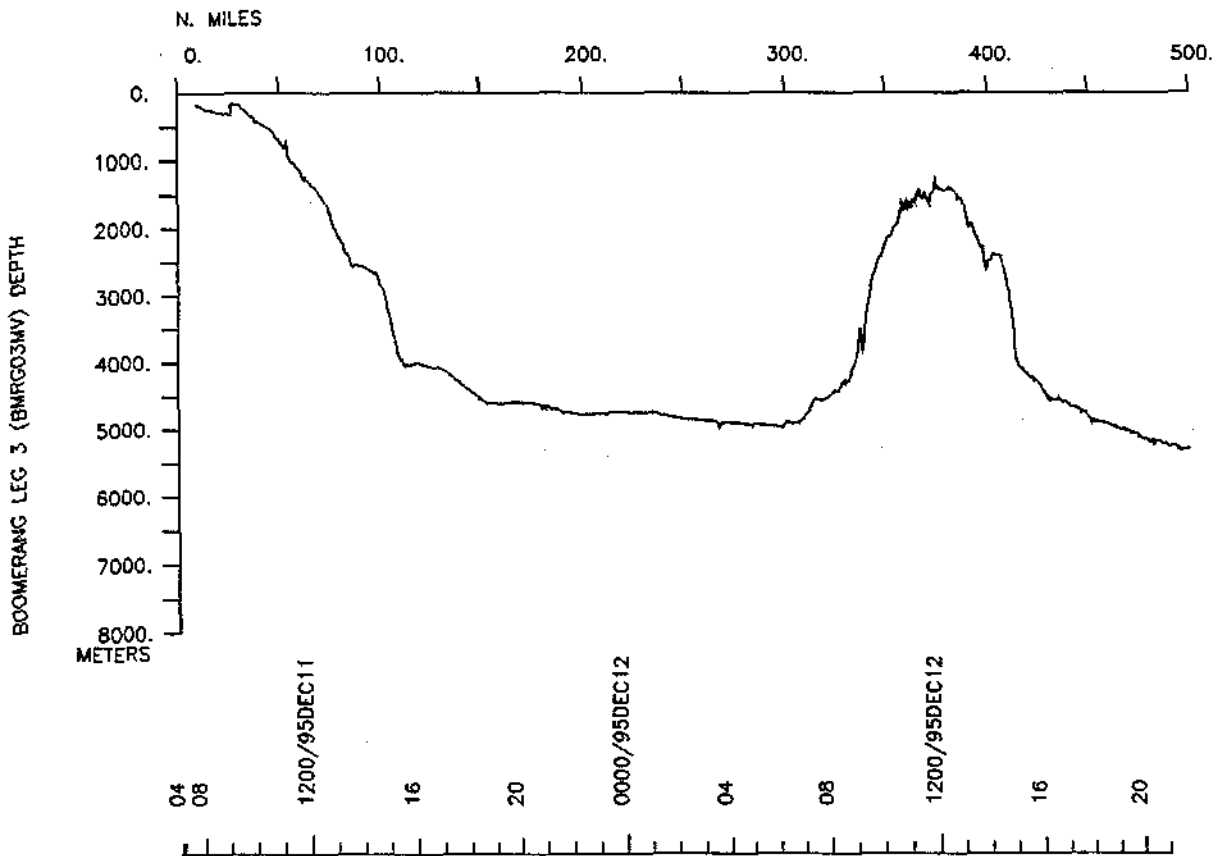
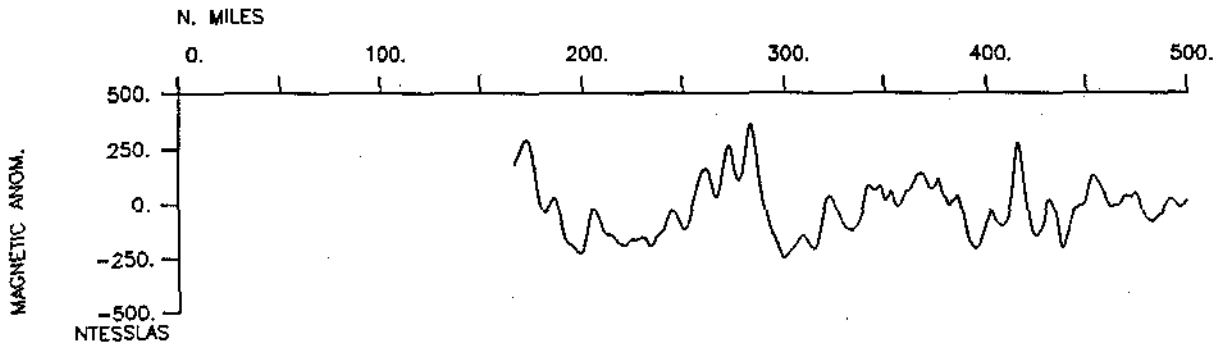
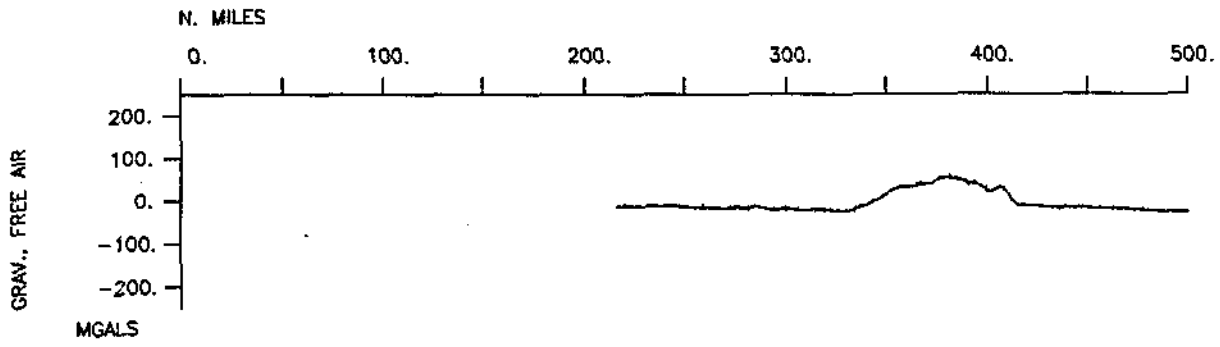
\*



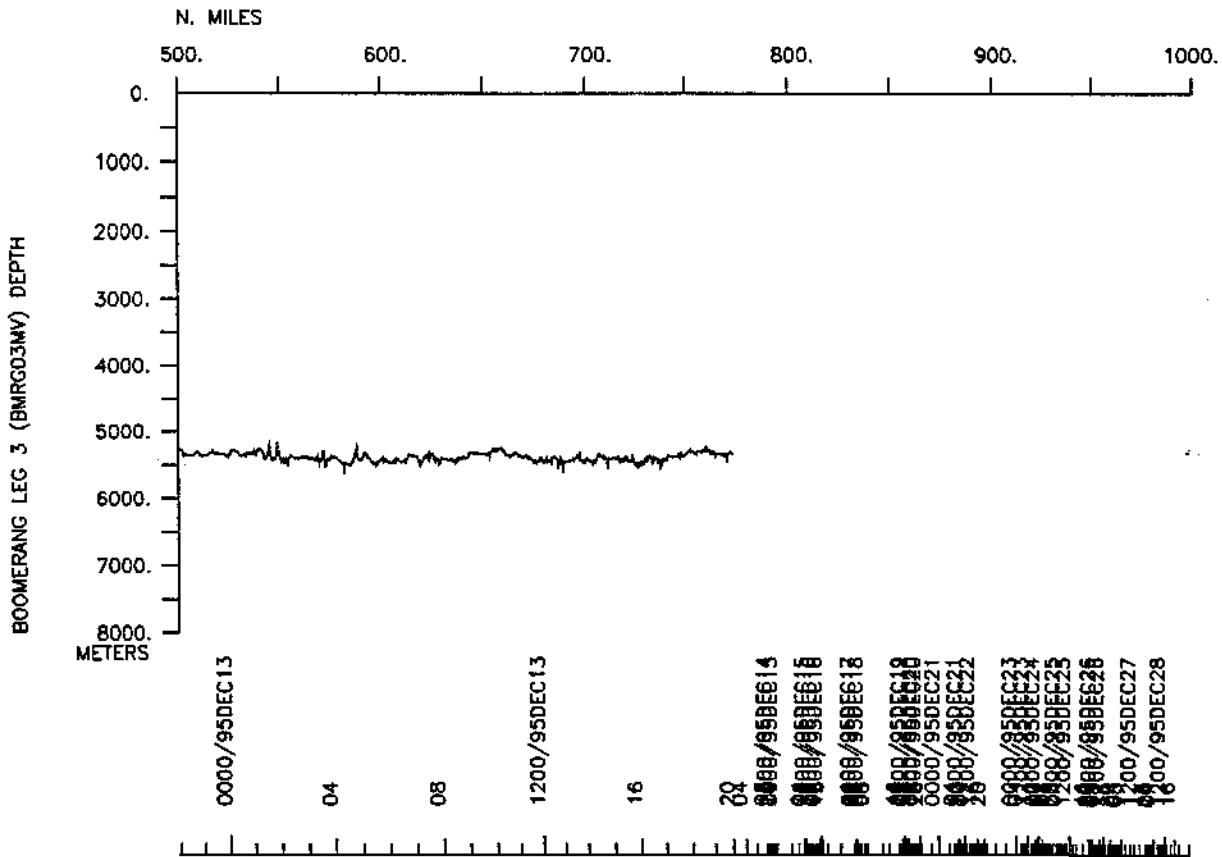
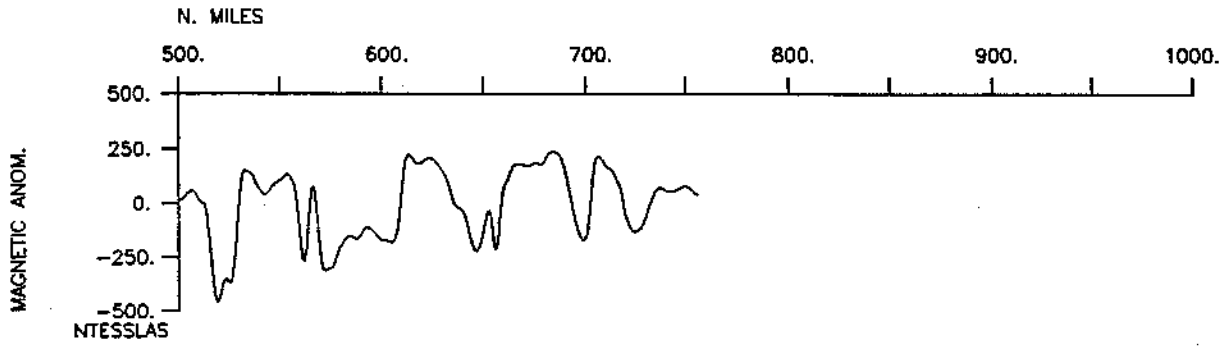
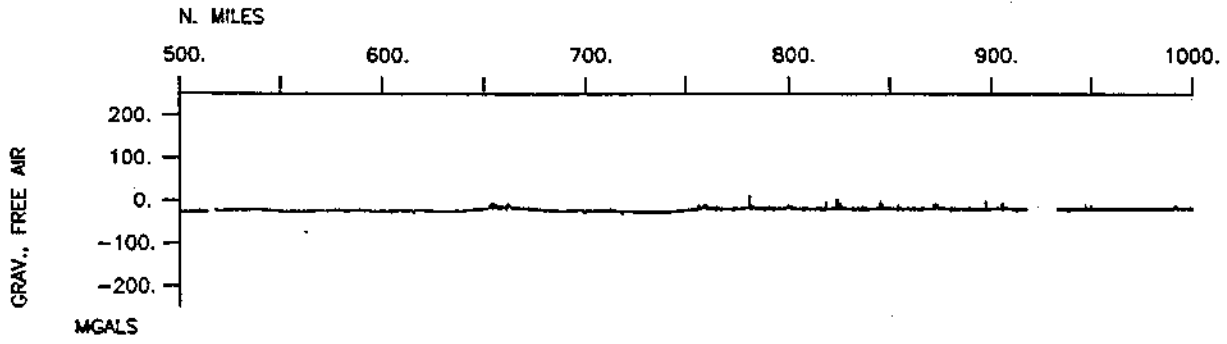
BOOMERANG Leg 3 (BMRG03MV)

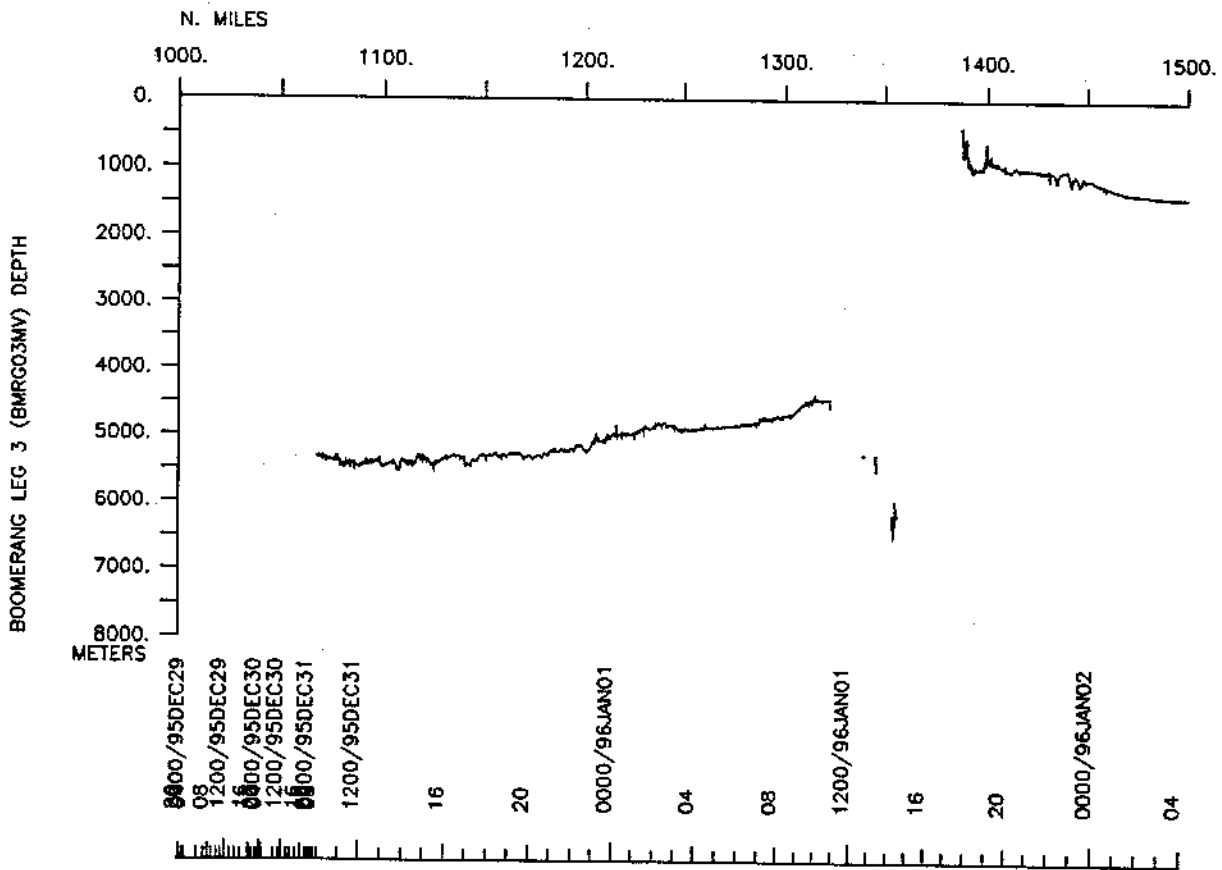
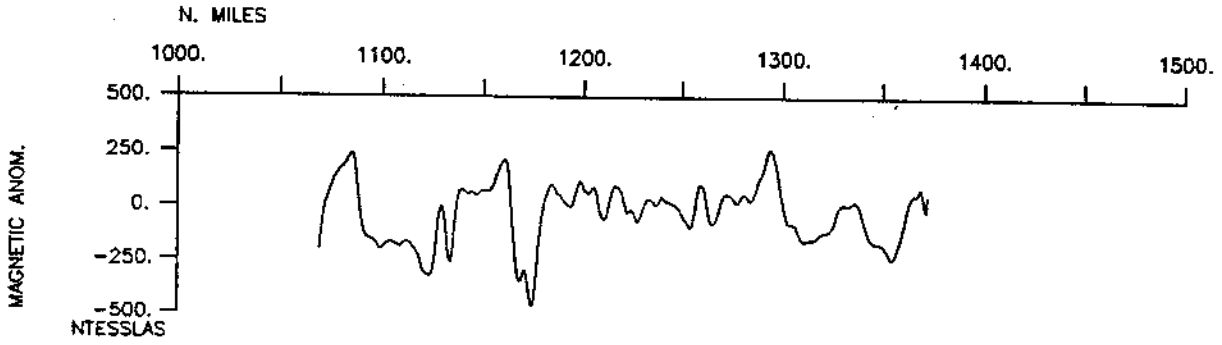
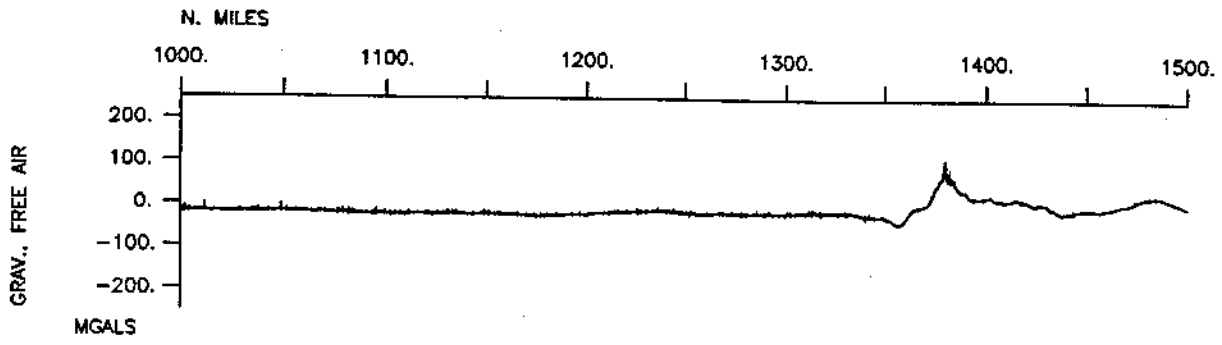
\*

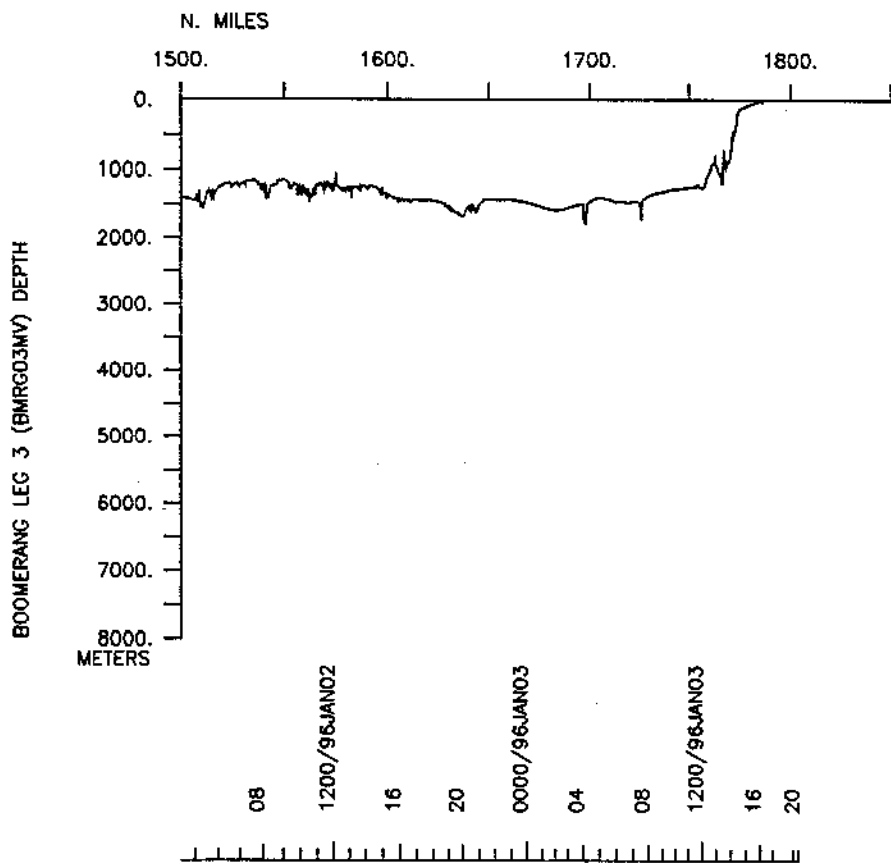
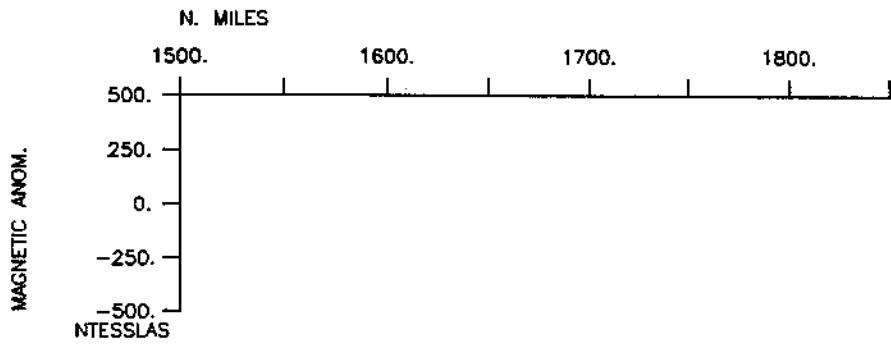
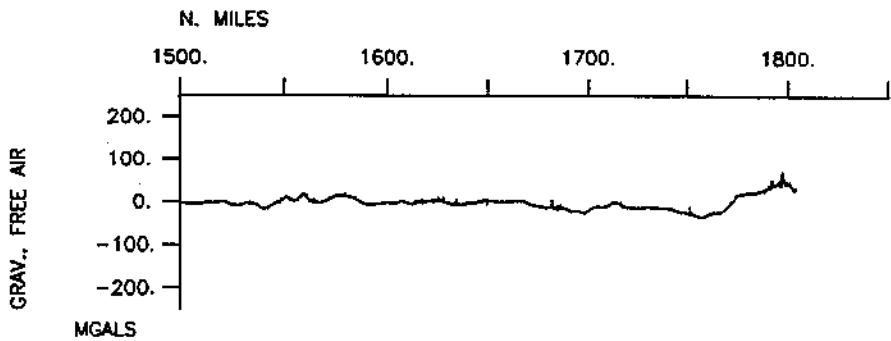












**S.I.O. SAMPLE INDEX**  
**BOOMERANG EXPEDITION**

**LEG 3**

**(BMRG03MV)**

R/V Melville

(Issued April 1996)

Chatham Is., New Zealand (11 December 1995)  
to  
Dunedin, New Zealand (3 January 1996)

**Chief Scientist: Ellen Druffel**

(University of California, Irvine)

*The Sample Index is a first level interdisciplinary listing of time, position, sample identification and disposition of all samples, records and measurements collected on this cruise leg. The index data are encoded at sea by the resident marine technician and processed on shore by the S.I.O. Geological Data Center shortly after the completion of the cruise leg.*

*Positions are interpolated on the basis of sample time by comparison to a single, edited navigation file. Samples beginning at one time and position and ending at another are entered on two consecutive lines. Disposition and sample type are represented by three and four character codes to permit future computer searches on these parameters. (Listings defining these codes are available from the Geological Data Center.)*

*GDC Cruise I.D.# 267*

\*\*\*\* Ports \*\*\*\*

0700	111295	0	LGPT B Chatham Is., N.Zeal.	44-00.00S	177-30.00E	f	BMRG03MV
1625	030196	0	LGPT E Dunedin, New Zealand	45-53.00S	170-31.00E	f	BMRG03MV

\*\*\*\* Personnel \*\*\*\*

#	*****NAME*****	*****TITLE*****	*****AFFILIATION*****	**CRID**
PECS	UCI Druffel, E.	Chief Scientist	U. of Cal. Irvine	BMRG03MV
PESP	UCI Griffin, S.	Specialist	U. of Cal. Irvine	BMRG03MV
PESP	UCI Gaza, B.	Research asso	U. of Cal. Irvine	BMRG03MV
PEST	UCI Masiello, C.	Grad student	U. of Cal. Irvine	BMRG03MV
PESP	SIO Wolgast, D.	Research asso	Scripps Institution	BMRG03MV
PESP	SIX Bauer, J.	Professor	VA.Inst.of Mar.Sci.	BMRG03MV
PESP	SIX Schrope, M.	Lab specialist	VA.Inst.of Mar.Sci.	BMRG03MV
PEST	SIX Loh, A.	Grad student	VA.Inst.of Mar.Sci.	BMRG03MV
PESP	SIX Taranto, M.	Volunteer	VA.Inst.of Mar.Sci.	BMRG03MV
PESP	UCI Wolgast, M.	Volunteer	U. of Cal. Irvine	BMRG03MV
PECT	SIO Moe, R.	Computer tech	Scripps Institution	BMRG03MV
PERT	SIO Wilson, R.	Resident tech	Scripps Institution	BMRG03MV

\*\*\*\* NOTES \*\*\*\*

#An 'X' in the (B)egin/(E)nd column following the sample code indicates no sample or data recovered. A 'C' indicates continuation of data collection #from before the beginning or after the end of a particular leg, (moored #bottom instruments, for example.) The number appearing in the columns #between the sample identifier and the disposition code, for many sample #entries, is the water depth in corrected meters.

#GMT	DDMMYY	SAMP	B	SAMPLE	DISP				p	CRUISE
#TIME	DATE	TZ	CODE	E IDENTIFIER	CODE	LATITUDE	LONGITUDE		c	LEG-SHIP
#*** Underway data curator - S. M. Smith ext. 42752										
#*** Sea Beam Records (vertical beam and side scan) ***										
0749	111295	0	MBSR	B v.beam&sidescan r-01	GDC	43-57.43S	176-43.50W	g		BMRG03MV
1625	030196	0	MBSR	E v.beam&sidescan r-01	GDC	45-43.52S	170-45.69E	g		BMRG03MV
#*** Magnetics (Earth Total Field) Records ***										
1947	111295	0	MGRA	B magnetics roll 1	GDC	46-30.91S	176-59.50W	g		BMRG03MV
1614	010196	0	MGRA	E magnetics roll 1	GDC	49-45.22S	178-54.92E	g		BMRG03MV
#*** Continuous Recorded Gravity ***										
0100	121295	0	GVCR	B gravity auto record	GDC	47-37.97S	177-03.93W	g		BMRG03MV
1625	030196	0	GVCR	E gravity auto record	GDC	45-43.52S	170-45.69E	g		BMRG03MV
#*** Conductivity, Temperature, Depth ***										
2054	131295	0	TDCT	B recording ctd	UCI	53-59.97S	176-39.96W	g		BMRG03MV
0010	141295	0	TDCT	E UCI sta 303a	UCI	53-59.59S	176-39.94W	g		BMRG03MV
0100	161295	0	TDCT	B recording ctd	UCI	53-59.59S	176-40.01W	g		BMRG03MV
0419	161295	0	TDCT	E UCI sta 316 5395m	UCI	53-59.59S	176-40.01W	g		BMRG03MV
0533	231295	0	TDCT	B recording ctd	UCI	53-59.59S	176-40.00W	g		BMRG03MV
0835	231295	0	TDCT	E UCI sta 355 5340m	UCI	54-00.00S	176-39.99W	g		BMRG03MV
2100	281295	0	TDCT	B recording ctd	UCI	54-00.01S	176-39.98W	g		BMRG03MV
0000	291295	0	TDCT	E UCI sta 386	UCI	53-59.59S	176-39.99W	g		BMRG03MV
0018	311295	0	TDCT	B recording ctd	UCI	53-59.96S	176-40.03W	g		BMRG03MV
0319	311295	0	TDCT	E UCI sta 398 5253m	UCI	54-00.00S	176-39.97W	g		BMRG03MV
#*** Hydrographic Casts ***										
0113	141295	0	HCGF	sta 304 25,85m	UCI	53-59.98S	176-39.99W	g		BMRG03MV
0239	141295	0	HCGF	306 250,1000m	UCI	53-59.99S	176-39.95W	g		BMRG03MV
0542	151295	0	HCGF	309 3000,3600m	UCI	53-59.99S	176-40.00W	g		BMRG03MV
2245	151295	0	HCGF	312 100mab,50mab	UCI	54-00.02S	176-40.03W	g		BMRG03MV
1846	171295	0	HCGF	322 2100,2800m	UCI	54-00.00S	176-40.03W	g		BMRG03MV
2255	171295	0	HCGF	323 50mab,4800m	UCI	54-00.00S	176-39.99W	g		BMRG03MV
1150	181295	0	HCGF	325a 3,10m	UCI	54-00.02S	176-40.00W	g		BMRG03MV

#	GMT	DDMMYY	TZ	SAMP CODE	B E	SAMPLE IDENTIFIER	DISP CODE	LATITUDE	LONGITUDE	p c	CRUISE LEG-SHIP
1842	181295	0	HCGF	326		2400,3300m	UCI	54-00.01S	176-40.04W	g	BMRG03MV
0959	191295	0	HCGF	330		150,450m	UCI	53-59.59S	176-40.00W	g	BMRG03MV
1108	191295	0	HCGF	331		600,800m	UCI	54-00.01S	176-40.01W	g	BMRG03MV
2111	191295	0	HCGF	333		1300,1500m	UCI	53-59.98S	176-40.01W	g	BMRG03MV
0159	211295	0	HCGF	342a		25m	UCI	54-00.05S	176-39.89W	g	BMRG03MV
0217	211295	0	HCGF	342b		25m	UCI	54-00.17S	176-39.80W	g	BMRG03MV
0424	211295	0	HCGF	342c		25m	UCI	53-59.99S	176-39.96W	g	BMRG03MV
0306	221295	0	HCGF	349a		25m	UCI	53-59.99S	176-39.95W	g	BMRG03MV
0314	221295	0	HCGF	349b		25m	UCI	53-59.99S	176-39.99W	g	BMRG03MV
0513	221295	0	HCGF	350		3600m, 3590, 3595m	UCI	54-00.00S	176-40.01W	g	BMRG03MV
1238	231295	0	HCGF	354		1000m	UCI	53-57.62S	176-41.22W	g	BMRG03MV
2210	231295	0	HCGF	358a		5,10m	UCI	54-00.00S	176-39.99W	g	BMRG03MV
0010	241295	0	HCGF	358b		25,50m	UCI	54-00.02S	176-40.05W	g	BMRG03MV
0110	241295	0	HCGF	358c		85,100m	UCI	54-00.03S	176-40.01W	g	BMRG03MV
0200	241295	0	HCGF	359		150,250m	UCI	54-00.01S	176-40.07W	g	BMRG03MV
0754	241295	0	HCGF	364a		25m	UCI	53-58.26S	176-39.11W	g	BMRG03MV
0801	241295	0	HCGF	364b		25m	UCI	53-58.27S	176-39.11W	g	BMRG03MV
0809	241295	0	HCGF	364c		25m	UCI	53-58.27S	176-39.11W	g	BMRG03MV
0824	241295	0	HCGF	364d		25m	UCI	53-58.27S	176-39.09W	g	BMRG03MV
0830	241295	0	HCGF	364e		25m	UCI	53-58.27S	176-39.11W	g	BMRG03MV
1214	241295	0	HCGF	365		3600m	UCI	53-58.27S	176-39.12W	g	BMRG03MV
1603	241295	0	HCGF	365a		3600m	UCI	53-58.28S	176-39.12W	g	BMRG03MV
2035	241295	0	HCGF	366		1700,1900m	UCI	54-00.00S	176-40.00W	g	BMRG03MV
0006	251295	0	HCGF	367		15mab,45mab	UCI	53-59.59S	176-40.00W	g	BMRG03MV
0330	251295	0	HCGF	370		450,600m	UCI	53-59.98S	176-39.97W	g	BMRG03MV
0753	251295	0	HCGF	369		1000,2800m	UCI	53-59.59S	176-40.00W	g	BMRG03MV
0259	261295	0	HCGF	374		2100,3600m	UCI	54-00.00S	176-39.99W	g	BMRG03MV
0807	261295	0	HCGF	375		20mab,30mab	UCI	54-00.01S	176-40.00W	g	BMRG03MV
2313	261295	0	HCGF	377a		25m	UCI	54-00.00S	176-39.98W	g	BMRG03MV
2326	261295	0	HCGF	377b		25m	UCI	53-59.59S	176-39.99W	g	BMRG03MV
0204	271295	0	HCGF	378		3600m	UCI	53-59.59S	176-39.99W	g	BMRG03MV
0551	271295	0	HCGF	380		450m	UCI	54-00.00S	176-40.00W	g	BMRG03MV
0656	271295	0	HCGF	381		1500m	UCI	54-00.00S	176-40.03W	g	BMRG03MV
2318	271295	0	HCGF	382		20,30&60mab	UCI	53-59.59S	176-40.03W	g	BMRG03MV
2318	271295	0	HCGF	382		40mab,50mab	UCI	53-59.59S	176-40.03W	g	BMRG03MV
0638	281295	0	HCGF	385		2100,2800m	UCI	53-59.99S	176-40.02W	g	BMRG03MV
0148	291295	0	HCGF	388		1500m,1450,1550m	UCI	54-00.01S	176-40.00W	g	BMRG03MV
2029	291295	0	HCGF	389		2800m	UCI	54-00.02S	176-40.00W	g	BMRG03MV
2308	291295	0	HCGF	389a		2800m	UCI	53-59.59S	176-39.98W	g	BMRG03MV
0543	301295	0	HCGF	391		2800m	UCI	53-59.98S	176-39.99W	g	BMRG03MV
0610	301295	0	HCGF	392a		25m	UCI	53-59.99S	176-39.99W	g	BMRG03MV
0622	301295	0	HCGF	392b		25m	UCI	53-59.99S	176-39.98W	g	BMRG03MV
1820	301295	0	HCGF	393		25m	UCI	53-59.96S	176-39.94W	g	BMRG03MV
2114	301295	0	HCGF	394		45&55mab,2800m	UCI	54-00.01S	176-39.99W	g	BMRG03MV
0616	311295	0	HCGF	399		25m	UCI	54-00.01S	176-39.97W	g	BMRG03MV
0716	311295	0	HCGF	401		450,3600m	UCI	53-59.99S	176-39.99W	g	BMRG03MV
0716	311295	0	HCGF	401		1500,2100m	UCI	53-59.99S	176-39.99W	g	BMRG03MV

#GMT	DDMMYY	SAMP	B	SAMPLE	DISP			p	CRUISE
#TIME	DATE	TZ	CODE	E IDENTIFIER	CODE	LATITUDE	LONGITUDE	c	LEG-SHIP
#									
#*** Yentsch Pump ***									
0710	141295	0	YNPM	B yentsch pump 25,85m	UCI	54-00.01S	176-40.01W	g	BMRG03MV
0955	141295	0	YNPM	E sta 307	UCI	54-00.02S	176-39.97W	g	BMRG03MV
1110	141295	0	YNPM	B yentsch 3000,3600m	UCI	53-59.98S	176-39.92W	g	BMRG03MV
0044	151295	0	YNPM	E sta 308	UCI	53-59.99S	176-39.98W	g	BMRG03MV
1035	151295	0	YNPM	B yentsch 1300,1500m	UCI	53-59.99S	176-39.98W	g	BMRG03MV
1842	151295	0	YNPM	E sta 311	UCI	54-00.02S	176-40.04W	g	BMRG03MV
0645	161295	0	YNPM	B yentsch 50&100mab	UCI	54-00.01S	176-40.00W	g	BMRG03MV
2100	161295	0	YNPM	E sta 317	UCI	53-59.69S	176-38.45W	g	BMRG03MV
0410	171295	0	YNPM	B yentsch 4200,4800m	UCI	53-59.99S	176-40.00W	g	BMRG03MV
1255	171295	0	YNPM	E sta 321	UCI	54-00.01S	176-39.99W	g	BMRG03MV
0520	181295	0	YNPM	B yentsch 2100,2800m	UCI	54-00.02S	176-39.97W	g	BMRG03MV
0920	181295	0	YNPM	E sta 325	UCI	54-00.00S	176-40.03W	g	BMRG03MV
2301	181295	0	YNPM	B yentsch 150,450m	UCI	53-59.98S	176-39.99W	g	BMRG03MV
0058	191295	0	YNPM	E sta 327	UCI	54-00.00S	176-40.01W	g	BMRG03MV
0344	191295	0	YNPM	B yentsch 800+1000m	UCI	53-59.59S	176-39.98W	g	BMRG03MV
0910	191295	0	YNPM	E sta 329	UCI	54-00.01S	176-40.01W	g	BMRG03MV
1340	191295	0	YNPM	B yentsch 450+600m	UCI	53-59.99S	176-39.99W	g	BMRG03MV
1840	191295	0	YNPM	E sta 332	UCI	54-00.01S	176-39.99W	g	BMRG03MV
0241	201295	0	YNPM	B yentsch 6and16m	UCI	54-00.01S	176-39.99W	g	BMRG03MV
0441	201295	0	YNPM	E sta 336	UCI	54-00.00S	176-39.97W	g	BMRG03MV
0655	201295	0	YNPM	B yentsch 25,250m	UCI	54-00.01S	176-40.01W	g	BMRG03MV
0856	201295	0	YNPM	E sta 337	UCI	54-00.00S	176-40.00W	g	BMRG03MV
1440	201295	0	YNPM	B yentsch 50&100mab	UCI	54-00.05S	176-39.99W	g	BMRG03MV
1840	201295	0	YNPM	E sta 338	UCI	54-00.02S	176-40.00W	g	BMRG03MV
0750	211295	0	YNPM	B yentsch 3000,3600m	UCI	54-00.01S	176-40.00W	g	BMRG03MV
1150	211295	0	YNPM	E sta 343	UCI	53-59.98S	176-39.94W	g	BMRG03MV
2006	211295	0	YNPM	B yentsch 2400,3300m	UCI	53-59.99S	176-39.99W	g	BMRG03MV
2309	211295	0	YNPM	E sta 345	UCI	53-59.59S	176-40.01W	g	BMRG03MV



#GMT	DDMMYY	SAMP	B	SAMPLE	DISP				p	CRUISE
#TIME	DATE	TZ	CODE	E IDENTIFIER	CODE	LATITUDE	LONGITUDE		c	LEG-SHIP
#										
#*** Open Nets ***										
2309	131295	0	ON25	B sta305	UCI	53-59.98S	176-39.98W	g		BMRG03MV
2313	131295	0	ON25	E sta305	UCI	53-59.98S	176-39.97W	g		BMRG03MV
0126	141295	0	ON25	B sta305a	UCI	53-59.59S	176-39.98W	g		BMRG03MV
0139	141295	0	ON25	E sta305a	UCI	54-00.02S	176-39.94W	g		BMRG03MV
1149	151295	0	ON25	B sta310	UCI	54-00.03S	176-40-02W	g		BMRG03MV
1200	151295	0	ON25	E sta310	UCI	53-59.98S	176-39.96W	g		BMRG03MV
2336	151295	0	ON25	B sta314	UCI	54-00.00S	176-39.99W	g		BMRG03MV
2346	151295	0	ON25	E sta314	UCI	54-00.00S	176-40.01W	g		BMRG03MV
2350	151295	0	ON25	B sta315	UCI	54-00.01S	176-40.01W	g		BMRG03MV
0000	161295	0	ON25	E sta315	UCI	53-59.99S	176-39.98W	g		BMRG03MV
0920	231295	0	ON1M	B net tow 120m	UCI	53-59.91S	176-40.10W	g		BMRG03MV
0950	231295	0	ON1M	E sta 356a	UCI	53-59.60S	176-40.27W	g		BMRG03MV
1004	231295	0	ON1M	B net tow 85m	UCI	53-59.42S	176-40.36W	g		BMRG03MV
1034	231295	0	ON1M	E sta 356b	UCI	53-58.97S	176-40.58W	g		BMRG03MV
1045	231295	0	ON1M	B net tow 50m	UCI	53-58.80S	176-40.67W	g		BMRG03MV
1115	231295	0	ON1M	E sta 356c	UCI	53-58.49S	176-40.81W	g		BMRG03MV
1125	231295	0	ON1M	B net tow 25m	UCI	53-58.36S	176-40.89W	g		BMRG03MV
1153	231295	0	ON1M	E sta 356d	UCI	53-57.97S	176-41.05W	g		BMRG03MV
0326	241295	0	ON1M	B net tow 120m	UCI	53-59.76S	176-39.89W	g		BMRG03MV
0347	241295	0	ON1M	E sta 362a	UCI	53-59.33S	176-39.84W	g		BMRG03MV
0355	241295	0	ON1M	B net tow 85m	UCI	53-59.15S	176-39.75W	g		BMRG03MV
0415	241295	0	ON1M	E sta 362b	UCI	53-58.74S	176-39.76W	g		BMRG03MV
0547	241295	0	ON1M	B net tow 50m	UCI	53-58.43S	176-39.62W	g		BMRG03MV
0608	241295	0	ON1M	E sta 362c	UCI	53-58.01S	176-39.65W	g		BMRG03MV
0615	241295	0	ON1M	B net tow 25m	UCI	53-57.88S	176-39.64W	g		BMRG03MV
0634	241295	0	ON1M	E sta 362d	UCI	53-57.47S	176-39.74W	g		BMRG03MV
2159	251295	0	ON1M	B net tow 120m	UCI	53-59.93S	176-39.86W	g		BMRG03MV
2227	251295	0	ON1M	E sta 372a	UCI	53-59.59S	176-39.97W	g		BMRG03MV
2231	251295	0	ON1M	B net tow 85m	UCI	53-59.59S	176-40.01W	g		BMRG03MV
2255	251295	0	ON1M	E sta 372b	UCI	53-59.95S	176-39.91W	g		BMRG03MV

#GMT	DDMMYY	SAMP	B	SAMPLE	DISP				p	CRUISE
#TIME	DATE	TZ	CODE	E IDENTIFIER	CODE	LATITUDE	LONGITUDE		c	LEG-SHIP
2303	251295	0	ON1M	B net tow 50m	UCI	53-59.93S	176-39.88W	g		BMRG03MV
2322	251295	0	ON1M	E sta 372c	UCI	53-59.90S	176-39.87W	g		BMRG03MV
2325	251295	0	ON1M	B net tow 25m	UCI	53-59.93S	176-39.92W	g		BMRG03MV
2339	251295	0	ON1M	E sat 372d	UCI	54-00.00S	176-40.04W	g		BMRG03MV

\*\*\* Bucket Samples \*\*\*

2306	131295	0	BKST	bucket sta 305	UCI	53-59.99S	176-39.98W	g		BMRG03MV
2249	141295	0	BKST	bucket sta 310	UCI	54-00.01S	176-39.99W	g		BMRG03MV
2346	151295	0	BKST	bucket sta 314	UCI	54-00.00S	176-40.01W	g		BMRG03MV
2350	151295	0	BKST	bucket sta 315	UCI	54-00.01S	176-40.01W	g		BMRG03MV
0043	171295	0	BKST	bucket sta 319	UCI	54-00.00S	176-39.99W	g		BMRG03MV
0328	211295	0	BKST	bucket sta 340	UCI	53-59.99S	176-39.98W	g		BMRG03MV
2328	211295	0	BKST	bucket sta 346	UCI	54-00.02S	176-40.01W	g		BMRG03MV
2354	241295	0	BKST	bucket sta 368	UCI	54-00.01S	176-40.02W	g		BMRG03MV
2320	261295	0	BKST	bucket sta 379	UCI	53-59.99S	176-40.01W	g		BMRG03MV
2302	271295	0	BKST	bucket sta 383	UCI	54-00.00S	176-40.01W	g		BMRG03MV
2323	291295	0	BKST	bucket sta 387	UCI	53-59.99S	176-40.01W	g		BMRG03MV
2314	301295	0	BKST	bucket sta 395	UCI	53-59.98S	176-40.01W	g		BMRG03MV

\*\*\* Air Samples \*\*\*

0228	211295	0	ASCS	B aerosol sample	UCI	54-00.30S	176-39.37W	g		BMRG03MV
0118	231295	0	ASCS	E sta 339	UCI	53-59.99S	176-39.93W	g		BMRG03MV
1938	231295	0	ASCS	B aerosol sample	UCI	54-00.00S	176-40.03W	g		BMRG03MV
1939	251295	0	ASCS	E sta 352	UCI	53-59.99S	176-40.04W	g		BMRG03MV
1941	251295	0	ASCS	B aerosol sample	UCI	54-00.00S	176-40.00W	g		BMRG03MV
1955	271295	0	ASCS	E sta 371	UCI	53-59.99S	176-40.03W	g		BMRG03MV

\*\*\* Gravity Cores \*\*\*

0241	231295	0	COGV	gravity1 sta352a	UCI	53-59.59S	176-40.02W	g		BMRG03MV
1845	231295	0	COGV	gravity2 sta357a	UCI	54-00.01S	176-40.02W	g		BMRG03MV
2046	261295	0	COGV	gravity3 sta376a	UCI	54-00.01S	176-39.98W	g		BMRG03MV
1941	271295	0	COGV	gravity4 sta381a	UCI	53-59.59S	176-40.01W	g		BMRG03MV

\*\*\* Biological Sample \*\*\*

\*\*\* Boat Hook Kelp \*\*\*

0442	271295	0	BLXX	boathk.kelp sta378a	UCI	54-00.05S	176-39.45W	g		BMRG03MV
0223	281295	0	BLXX	boathk.kelp sta384a	UCI	53-59.99S	176-40.00W	g		BMRG03MV

#

End Sample Index

BMRG03MV