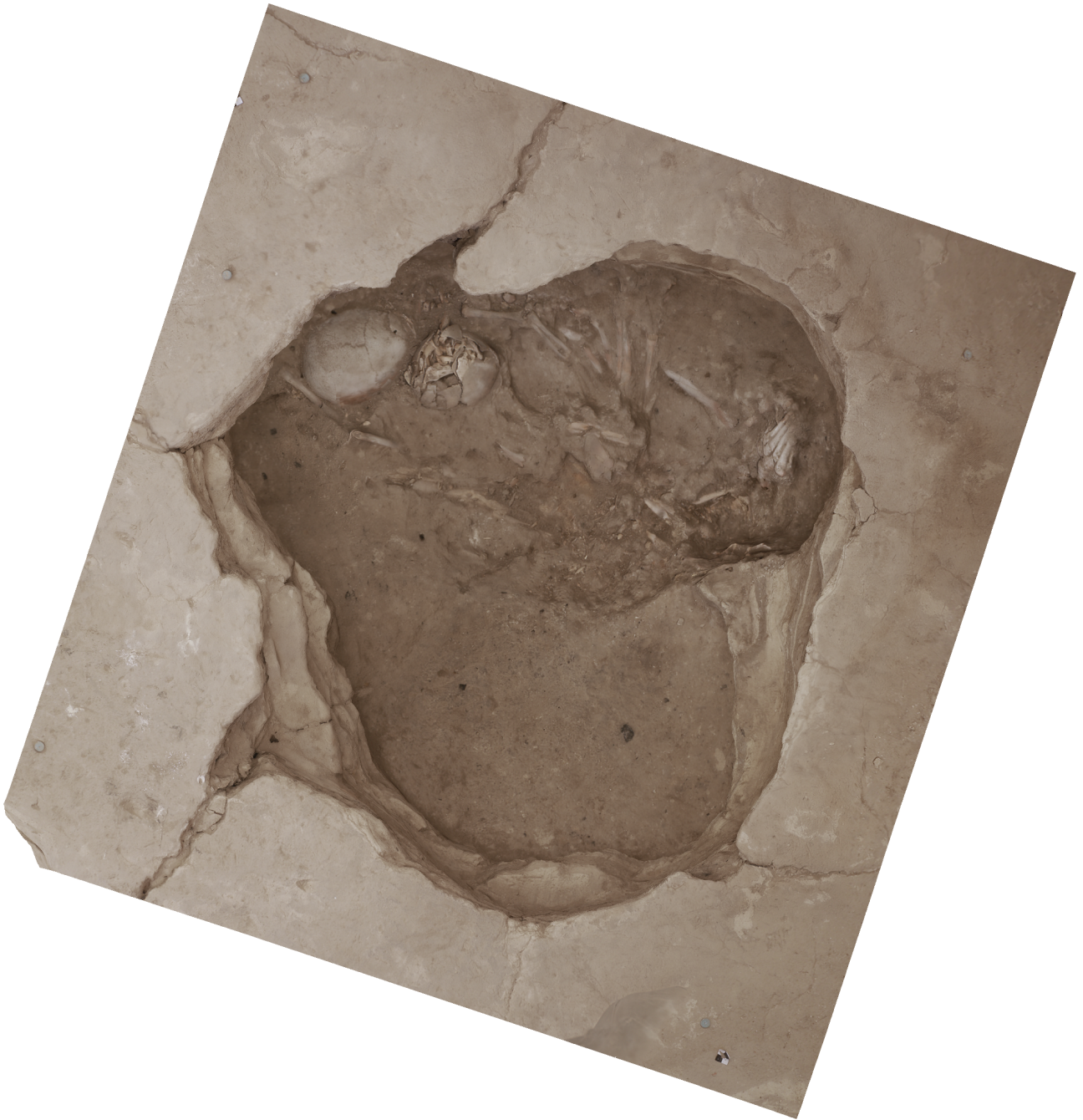


Agisoft PhotoScan

Processing Report
06 November 2014



Survey Data

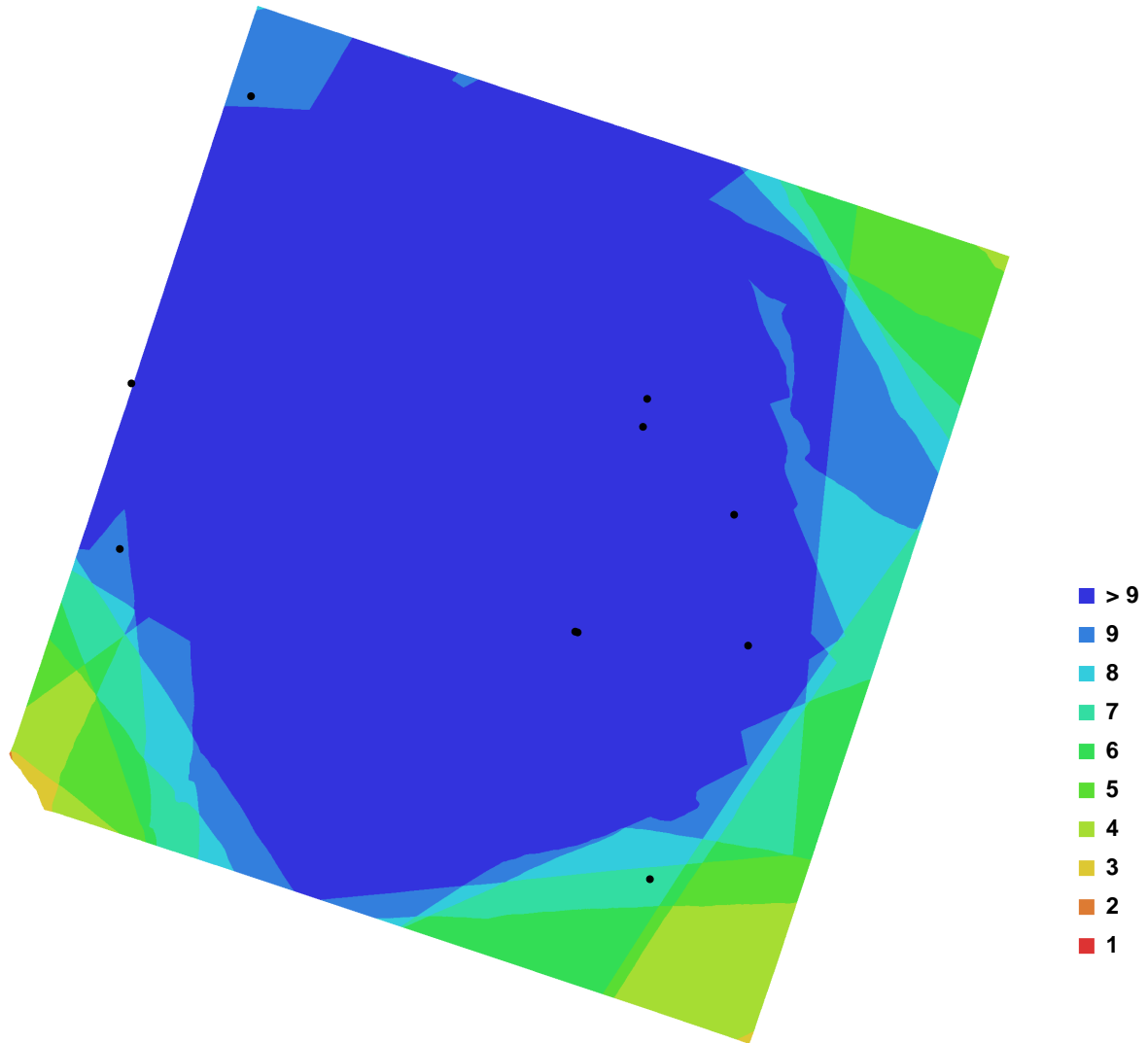


Fig. 1. Camera locations and image overlap.

Number of images:	17	Camera stations:	17
Flying altitude:	1.72389 m	Tie-points:	62947
Ground resolution:	0.000274894 m/pix	Projections:	162577
Coverage area:	1.46393e-006 sq km	Error:	0.721407 pix

Camera Model	Resolution	Focal Length	Pixel Size	Precalibrated
Canon EOS M (20 mm)	5184 x 3456	20 mm	4.384 x 4.384 um	No

Table. 1. Cameras.

Digital Elevation Model

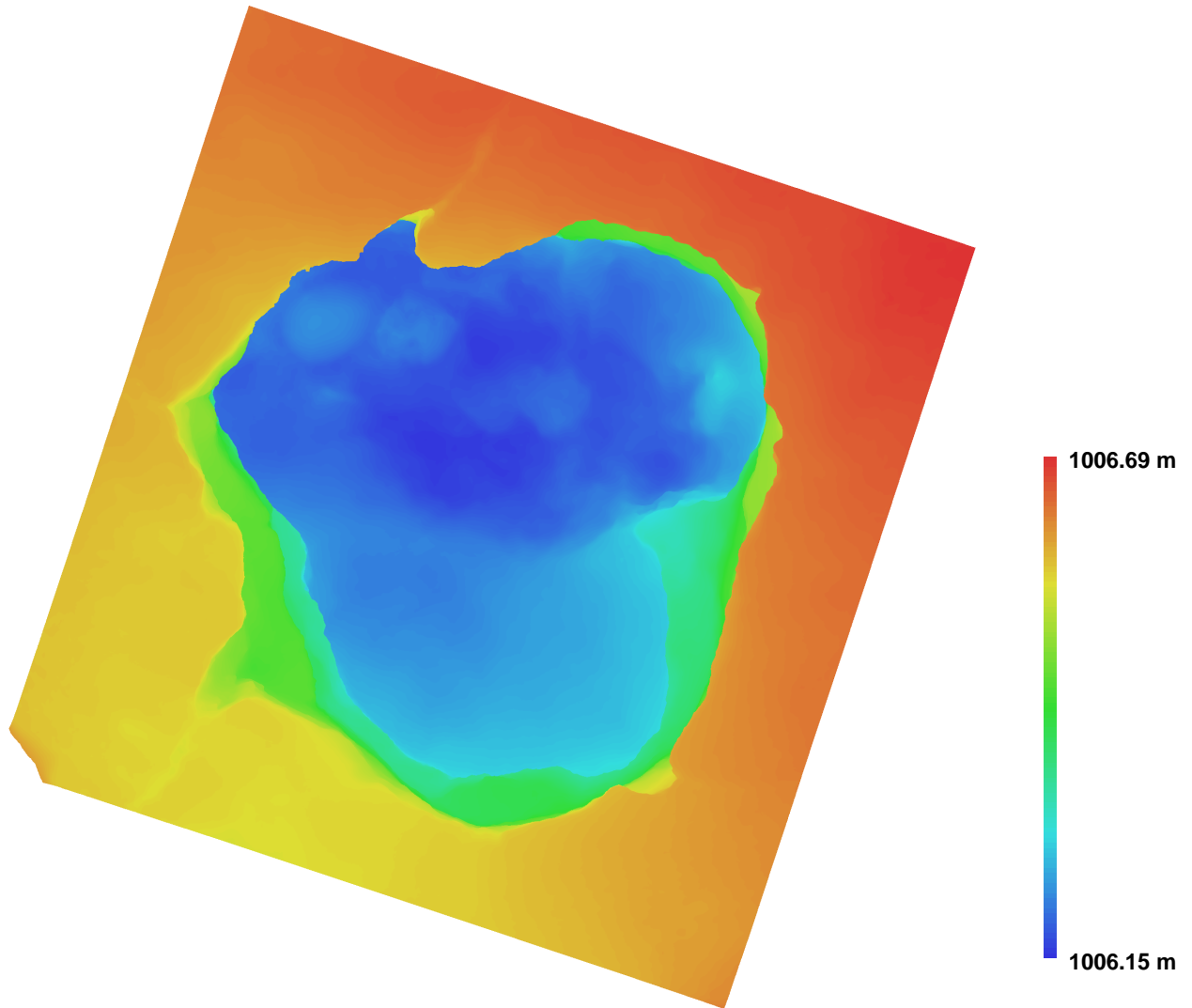


Fig. 2. Reconstructed digital elevation model.

Resolution: 0.00109958 m/pix
Point density: 827083 points per sq m