

REPORT AND INDEX OF
UNDERWAY MARINE GEOPHYSICAL DATA
NPAL98MV
(NORTH PACIFIC ACOUSTIC LABORATORY)

(R/V Melville)

(Issued October 1998)

Ports:

San Diego, California (06 July 1998)

to

San Diego, California (17 July 1998)

Chief Scientist:

Peter Worcester, Scripps Institution
email: pworcester@ucsd.edu

Marc Silver, Computer Technician
Robert Wilson, Resident Technician
Lynn Butler, Resident Technician

Post-Cruise Processing and Report Preparation by the
Geological Data Center, Scripps Institution of Oceanography
La Jolla, California 92093-0223
GDC email: gdcinfo@gdcmp1.ucsd.edu

NOTE: *This is an index of underway geophysical data edited and processed after the completion of the cruise leg and is intended primarily for informal use within the institution. This document is not to be reproduced or distributed outside Scripps without prior approval of the chief scientist or the Geological Data Center, Scripps Institution of Oceanography, La Jolla, California 92093-0223*

GDC Cruise I.D.# 280

**REPORT AND INDEX OF NAVIGATION
AND UNDERWAY GEOPHYSICAL DATA**

Processed by the Geological Data Center
Scripps Institution of Oceanography

Contents:

Index Chart - gives track of cruise leg, dates, ports, and mileage of each type of data collected.

Track Charts - annotated with dates and hour ticks.

Profiles - depth; magnetic and gravity free air anomaly vs. distance. (Sections of track with seismic reflection data have a wide black line along the bottom of the profile.)

Sample Index - list of begin/end times and positions of all underway records as well as samples and measurements from other disciplines collected on the leg.

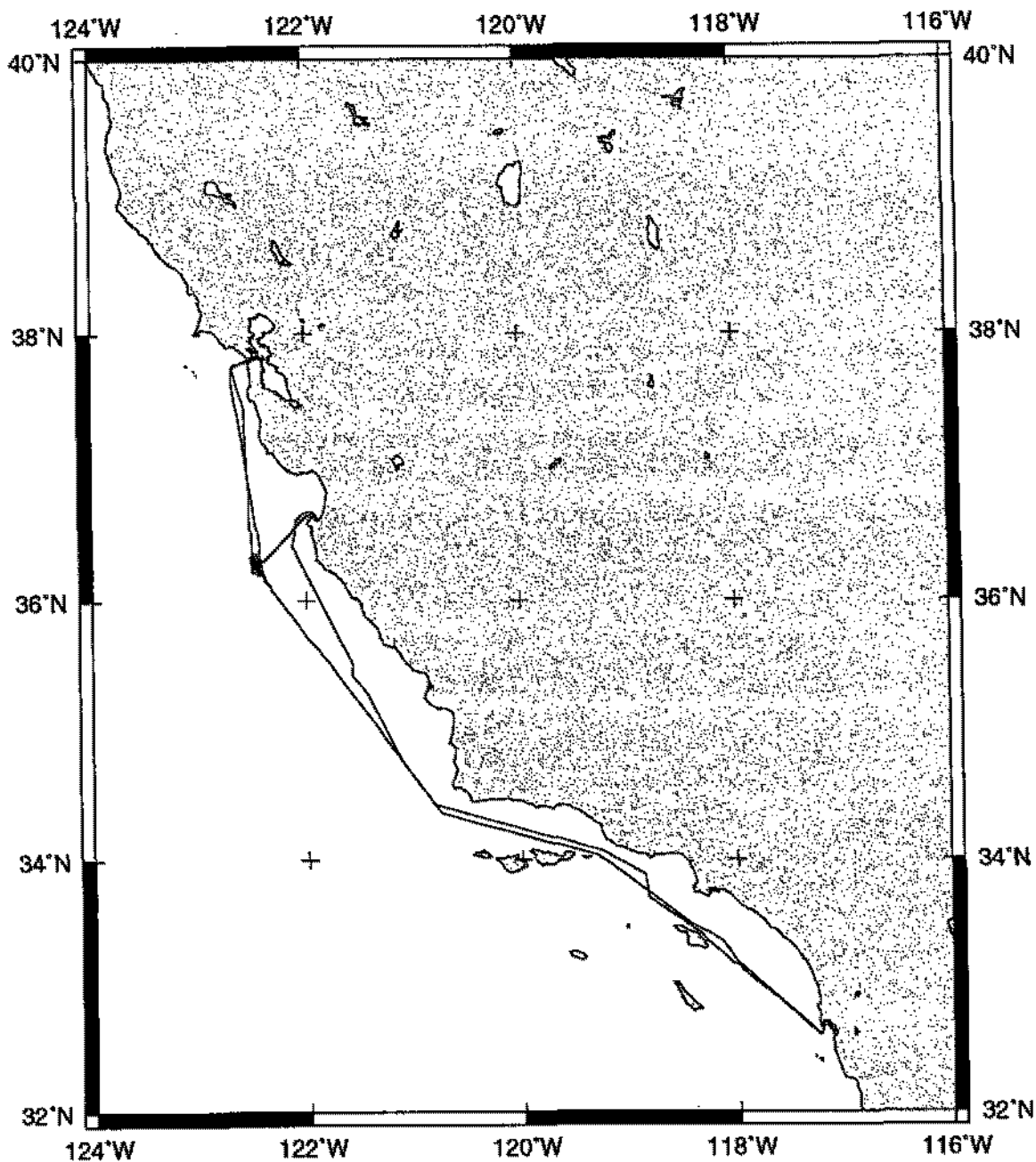
NOTE: One or more of the underway data types may not be collected on a given leg. For information on the availability and reproduction costs of data in the following forms, contact S.M. Smith, Curator, Geological Data Center, Scripps Institution of Oceanography, La Jolla, California 92093-0223. Phone: (619)534-2752, FAX: (619)534-6500, Internet email: ssmith@ucsd.edu

1. Files via ftp or on 8mm (Exabyte) and 4mm (DAT) magnetic tape:
 - a) Separate time series ASCII files of navigation, single beam depth, gravity and magnetics.
 - b) Above data in a single merged ASCII file in the MGD77 Exchange Format.
 - c) SeaBeam depth data (binary, Sun byte order)
 - d) SeaBeam Sidescan data.

2. Microfilm (35 mm flowfilm) or hard copies of:
 - a) Underway watch log book.
 - b) SeaBeam vertical beam profile/Sidescan records.
 - c) 3.5 kHz and 12 kHz echosounder records.
 - d) Seismic reflection profiler records.

3. Navigation listing with times and positions of fixes and course and speed changes.

4. Custom plots in Mercator projection:
 - a) Track plots.
 - b) SeaBeam depth contour plots.
 - c) Depth, magnetic or gravity values printed or profiled along track.



NORTH PACIFIC ACOUSTIC EXPEDITION (NPAL98MV)

CHIEF SCIENTIST: Peter Worcester, Scripps Institution

PORTS: San Diego - San Diego, California

DATES: 6 - 17 July 1998

SHIP: R/V Melville

TOTAL MILEAGE OF UNDERWAY DATA COLLECTED

Cruise - 1201 miles

Magnetics - none collected

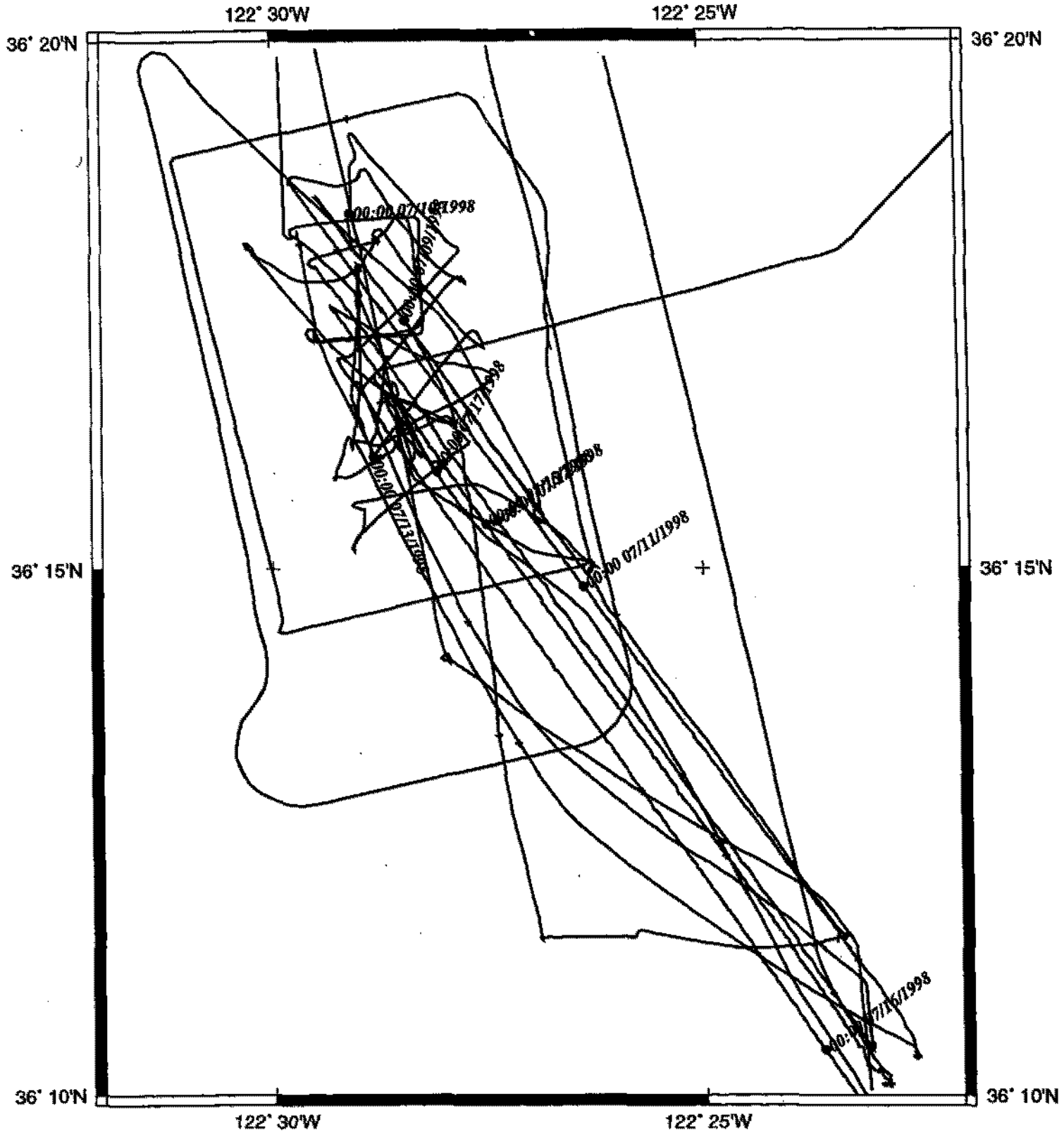
Bathymetry - 620 miles

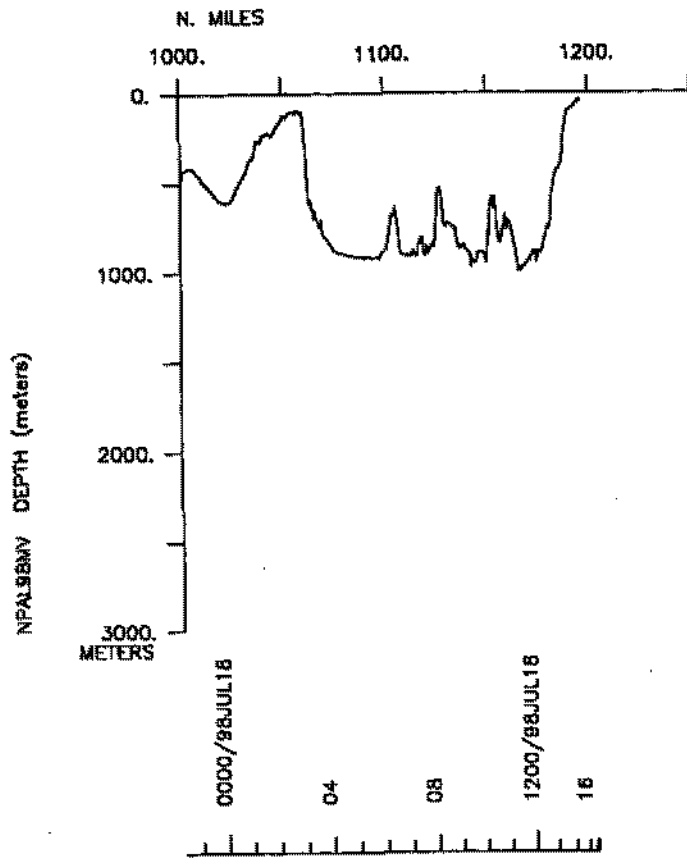
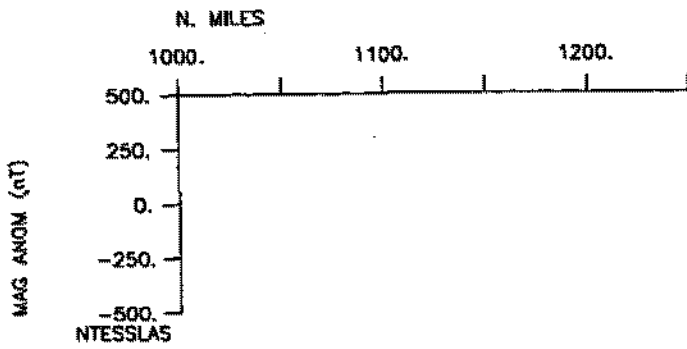
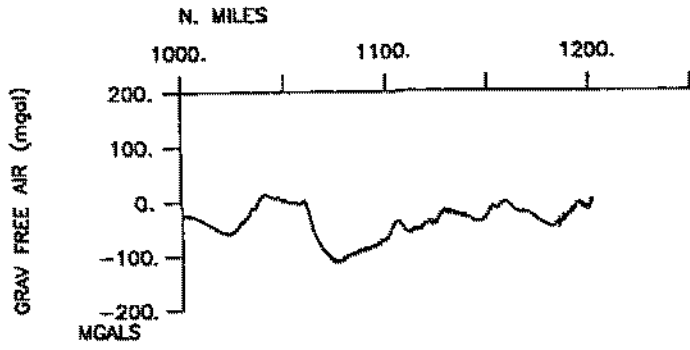
Seismic Reflection - none collected

Sea Beam - 620 miles

Gravity - 1146 miles

NPAL98MV Survey





S.I.O. SAMPLE INDEX

NPAL98 EXPEDITION

(NPAL98MV)

R/V Melville

(Issued October 1998)

PORTS:

San Diego, California (06 July 1997)

to

San Diego, California (17 July 1997)

Chief Scientist:

Peter Worcester, Scripps Institution

The Sample Index is a first level interdisciplinary listing of time, position, sample identification and disposition of all samples, records and measurements collected on this cruise leg. The index data are encoded at sea by the resident marine technician and processed on shore by the S.I.O. Geological Data Center shortly after the completion of the cruise leg.

Positions are interpolated on the basis of sample time by comparison to a single, edited navigation file. Samples beginning at one time and position and ending at another are entered on two consecutive lines. Disposition and sample type are represented by three and four character codes to permit future computer searches on these parameters. (Listings defining these codes are available from the Geological Data Center.)

GDC Cruise I.D.# 280

*** Ports ***

1707	060798	LGPT B San Diego, Calif.	32-40.00N	117-14.00W	f	NPAL98MV
1730	180798	LGPT E San Diego, Calif.	32-40.00N	117-14.00W	f	NPAL98MV
2300	120798	LGSS B San Francisco, Calif.	37-50.00N	122-25.00W	f	NPAL98MV
0600	130798	LGSS E San Francisco, Calif.	37-50.00N	122-25.00W	f	NPAL98MV

#***Personnel***

#	*****Name*****	*****Title*****	*****Affiliation*****	**Crid**
PECS	IGPP Worcester, P.	Chief Scientist	Scripps Institution	NPAL98MV
PERT	STS Butler, L.	Resident tech	Scripps Institution	NPAL98MV
PERT	STS Wilson, R.	Resident tech	Scripps Institution	NPAL98MV
PESP	IGPP Day, L.	Scientist	Scripps Institution	NPAL98MV
PESP	SIO Doherty, D.	Technician	Scripps Institution	NPAL98MV
PESP	IGPP Dzieciuch, M.	Scientist	Scripps Institution	NPAL98MV
PEST	MPL Green, L.	Technician	Scripps Institution	NPAL98MV
PESP	IGPP Hardy, K.	Engineer	Scripps Institution	NPAL98MV
PESP	IGPP Horwitt, D.	Scientist	Scripps Institution	NPAL98MV
PEST	UWA Howe, B.	Scientist	Univ. of Washington	NPAL98MV
PESP	WHOI Kemp, L.	Technician	Woods Hole	NPAL98MV
PESP	SIO Norenberg, M.	Technician	Scripps Institution	NPAL98MV
PESP	IGPP Rivera, A.	Technician	Scripps Institution	NPAL98MV
PECT	SCG Silver, M.	Computer tech	Scripps Institution	NPAL98MV
PESP	SIO Tiemann, C.	Scientist	Scripps Institution	NPAL98MV
PESP	WHOI Wage, K.	Student	Woods Hole/MIT	NPAL98MV

#*** NOTES ***

#An 'X' in the (B)egin/(E)nd column following the sample code indicates no
 #sample or data recovered. A 'C' indicates continuation of data collection
 #from before the beginning or after the end of a particular leg. (Moored
 #bottom instruments, for example.) The number appearing in the columns
 #between the sample identifier and the disposition code, for many sample
 #entries, is the water depth in corrected meters.

#GMT	DDMMYY	SAMP	B	SAMPLE	DISP				p	CRUISE
#TIME	DATE	TZ	CODE	E IDENTIFIER	CODE	LATITUDE	LONGITUDE		c	LEG-SHIP
#	-----	---	---	-----	---	-----	-----	-----	---	-----

*** Underway Data Curator - S. M. Smith ext. 42752 ***

#*** Log Books ***

1700	060798	0	LBOW	B	Underway watch log	GDC	32-42.40N	117-14.18W	g	NPAL98MV
1730	180798	0	LBOW	E	Underway watch log	GDC	32-42.40N	117-14.18W	g	NPAL98MV
0212	070798	0	LBSC	B	Science log book	IGPP	32-42.40N	117-14.18W	g	NPAL98MV
1730	180798	0	LBSC	E	Science log book	IGPP	32-42.40N	117-14.18W	g	NPAL98MV

#*** Sea Beam Digital Data (Vertical Beam and Side Scan) ***

0130	070798	0	MBSR	B	v.beam&sidescan	GDC	32-59.91N	117-46.74W	g	NPAL98MV
1600	180798	0	MBSR	E	v.beam&sidescan	GDC	32-38.94N	117-13.31W	g	NPAL98MV

#*** Gravity Digital Data ***

1700	060798	0	GVDR	B	gravity	GDC	32-42.40N	117-14.18W	g	NPAL98MV
1730	180798	0	GVDR	E	gravity	GDC	32-42.40N	117-14.18W	g	NPAL98MV

#GMT	DDMMYY	SAMP	B	SAMPLE	DISP				p	CRUISE
#TIME	DATE	TZ	CODE	E IDENTIFIER	CODE	LATITUDE	LONGITUDE		c	LEG-SHIP
#										
*** Moored Instrument ***										
2215	090798	0	BUXX	B mooring vla1	IGPP	36-18.30N	122-29.27W	g		NPAL98MV
1730	180798	0	BUXX	C mooring vla1	IGPP	32-42.40N	117-14.18W	g		NPAL98MV
0400	110798	0	BUXX	B mooring vla2	IGPP	36-18.02N	122-29.21W	g		NPAL98MV
1730	180798	0	BUXX	C mooring vla2	IGPP	32-42.40N	117-14.18W	g		NPAL98MV
0159	120798	0	BUXX	B mooring vla3	IGPP	36-17.34N	122-29.01W	g		NPAL98MV
1730	180798	0	BUXX	C mooring vla3	IGPP	32-42.40N	117-14.18W	g		NPAL98MV
0204	150798	0	BUXX	B mooring vla4	IGPP	36-17.00N	122-28.89W	g		NPAL98MV
1730	180798	0	BUXX	C mooring vla4	IGPP	32-42.40N	117-14.18W	g		NPAL98MV
0757	160798	0	BUXX	B mooring vla5a	IGPP	36-16.41N	122-28.74W	g		NPAL98MV
1730	180798	0	BUXX	C mooring vla5a	IGPP	32-42.40N	117-14.18W	g		NPAL98MV
0204	150798	0	BUXX	B pop up buoy vla4	IGPP	36-17.00N	122-28.89W	g		NPAL98MV
1730	180798	0	BUXX	E pop up buoy vla4	IGPP	32-42.40N	117-14.18W	g		NPAL98MV
0757	160798	0	BUXX	B pop up buoy vla5	IGPP	36-16.41N	122-28.74W	g		NPAL98MV
1730	180798	0	BUXX	E pop up buoy vla5	IGPP	32-42.40N	117-14.18W	g		NPAL98MV
*** Expendable Bathythermographs ***										
1304	080798	0	BTXP	xbt 1	1000m	GDC	36-13.67N	122-27.18W	g	NPAL98MV
1725	120798	0	BTXP	xbt 2	760m	GDC	36-16.06N	122-28.81W	g	NPAL98MV
*** Conductivity, Temperature, Depth ***										
0134	130798	0	TDCT	B ctd 1	1802m	IGPP	36-16.06N	122-28.81W	g	NPAL98MV
0302	130798	0	TDCT	E ctd 1		IGPP	36-16.06N	122-28.81W	g	NPAL98MV
***				End Sample Index						NPAL98MV