

Cell Centered Database

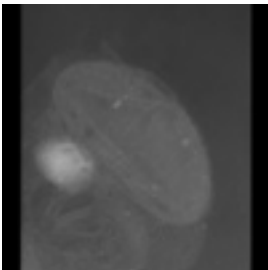
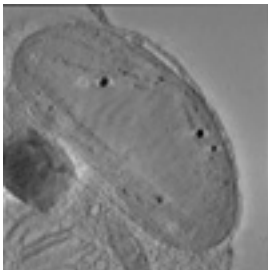

University of California, San Diego

Maryann Martone

Microscopy Product #:3432 Phaeo27

For the most updated information, please visit

<http://ccdb.ucsd.edu/CCDBWebSite/main?event=displaySum&mpid=3432>

Image2D	Reconstruction	Segmentation
		

Project Information:

PROJECT_ID	P1576
PROJECT_NAME	Chloroplast Ultrastructure of Phaeocystis antarctica in High and Low Light Conditions
PROJECT_DESCRIPTION	The three-dimensional morphological rearrangements for two conditions that mimic light conditions for the Antarctic summer and winter were studied in Phaeocystis antarctica Karsten
LEADER	Tiffany Moisan
FUNDING_AGENCY	National Aeronautics and Space Administration
PROJECT_START_DATE	
PROJECT_END_DATE	
COLLABORATORS	Gina Sosinsky , Casey Buitenhuis, Mark Ellisman
PUBLICATION1	Moisan, T., Ellisman, M. H., Buitenhuis, C.W., Sosinsky, G. E., (2006) Differences in Chloroplast Ultrastructure of Phaeocystis antarctica in High and Low Light Conditions, Marine Biology, 149 (6) 1281-1290
PUBLICATION2	
PUBLICATION3	

Experiment Information -

PURPOSE	To examine thylakoid membrane architecture under conditions of high light
TITLE	High light condition
EXPERIMENTER	Tiffany Moisan
EXPERIMENT_NAME	
EXPERIMENT_DATE	

Subject Information -	
GROUP_BY	Light level
SUBJECT_NAME	High light
FIXATION_METHOD_ID	
SCIENTIFIC_NAME	Phaeocystis antarctica
SPECIES	algae
STRAIN	Karsten
AGE	days
AGECLASS	6-8 generation cultured cells
ANIMAL_NAME	
LITTER_ID	
SEX	unspecified
VENDOR	
WEIGHT	grams

Tissue -	
ANATOMIC_LOCATION	
MICROTOME	Ultramicrotome
ORIENTATION	
THICKNESS	.25 um
TISSUE_PROD_STORAGE	
EXTERNAL_FILE_NAME	P1576_Phaeo1.xml
TISSUE_GROUP_TYPE	

Microscopy Product Information -	
MICROSCOPY_PRODUCT_ID	3432
IMAGE_BASENAME	Phaeo27
CREATE_DATE	
INSTRUMENT	JEOL 4000EX IVEM
MICROSCOPE_TYPE	IVEM
PLANE_COUNT	
PRODUCT_TYPE	SINGLE TILT
PURL	
SESSION_NAME	
TELESCIENCE_SRB	P1576/Experiment_3363/Subject_61/Tissue_75/Microscopy_3432
X_RESOLUTION	nm/pixels
Y_RESOLUTION	nm/pixels
XSIZE	
YSIZE	

Protocol:

Culture conditions. Cultures of colonial *P. antarctica* (CCMP 1374) were grown semi-continuously for 5-8 generations in f/2 medium (Guillard and Ryther 1962) under continuous blue light at 4°C at irradiances of 14 and 259 $\mu\text{mol quanta m}^{-2} \text{s}^{-1}$.

Specific growth rate. Specific growth rate was estimated by a linear regression of loge transformed daily determinations of in vivo

fluorescence intensity (n=2) measured with a Turner Model 10 fluorometer.

Sample preparation for electron microscopy. *P. antarctica* colonies were fixed on ice with a 2% glutaraldehyde and 1.3% osmium tetroxide solution for 30 minutes and rinsed in distilled water. Cells were dehydrated through a series of ethanol: water washes (25:75, 50:50, 75:25, 95:5), three 100% ethanol washes and finally through three washes of 100% acetone. Cells were pelleted and fixed in an Epon resin. The fixation process lends itself to a breakup of the colonial matrix and we were able to examine *P. antarctica* individual colonial cells using electron tomography. Embedded samples were cut on a Reichert-Jung Ultracut E microtome, transferred to 50/50 mesh copper clam grids, and stained with uranyl acetate and lead citrate. After staining, 20 nm colloidal gold particles (Sigma-Aldrich Chemicals, St. Louis, MO) were added to both sides of the grid to serve as fiducial markers for aligning tilted images. Individual colonial cells were observed at low magnification at 80kV on a JEOL 100CX to determine specimen quality and to select suitable samples.

Intermediate voltage electron microscopy. Sections of 0.25 (high light condition) and 0.75 μ m (low light condition) in thickness were cut, post-stained with uranyl acetate and lead citrate and examined at 400 kV on a JEOL 4000 intermediate voltage electron microscope. Tilt series consisting of 61 images (-60 \circ to 60 \circ at 2 \circ tilt increments) were collected at either 12-15,000 magnification (low light condition) or 20-30,000 magnification (high light condition). Images were collected on film (Kodak 4489 electron image film) or on a Slow-Scan Cooled CCD camera (Fan et al. 2000). Sections were pre-irradiated before each tilt series in order to limit anisotropic specimen thinning during specimen examination (Luther 1992). The illumination was held constant using parallel electron beam conditions and the image was maximized for each exposure. A computer-controlled goniometer was used to accurately tilt the specimen. For tilt series acquired on film, digitization was accomplished using a Photometrics 1024 x 1024 Cooled CCD camera containing a 19- μ m² pixel with sampling sizes of ~50-85 μ m pixel⁻¹.

Single-axis tilt series tomographic reconstruction methodology. Tilted images were aligned with each other by use of a set of common fiducial marks consisting of 20 nm colloidal gold beads. Reconstruction methods follow that those of Perkins et al. (1997). The common fiducial marks on each image of the tilt series were aligned using the program XFIDO. Alignment of the tilt series was initially calculated using a least-squares algorithm through the z-direction of the tilt series using the program SAXALIGN. After initial alignment, volumes were computed using either a standard r-weighted simple back projection algorithm or a Globus enabled parallelized version of this algorithm that considerably speeded up these computations (Smallen et al. 2000).

The 3D reconstruction is viewed and analyzed with ANALYZE AVW (Biomedical Imaging Resource, Mayo Clinic, <http://www.mayo.edu/bir/Software/Analyze/Analyze.html>). Individual thylakoids, pyrenoids, and chloroplast membranes were traced on the electron tomographic reconstruction using the program XVOXTRACE. The resolution of the organelles was estimated to be ~10 nm (based on detectability of features and pixel sampling criteria). All computations and graphics were performed on either Silicon Graphics or Sun workstations.

Image Type -	
SINGLE_TILT_IMAGE_SEQ_ID	6001
TILT_INCREMENT	2 degrees
SINGLE_TILT_NOTES	Specimen was preirradiated prior to imaging
SINGLE_TILT_IMAGE_SEQ_ID	6001
TILT_INCREMENT	2 degrees
RANGE_MAX	60 degrees
RANGE_MIN	-60 degrees
SINGLE_NOTES	Specimen was preirradiated prior to imaging

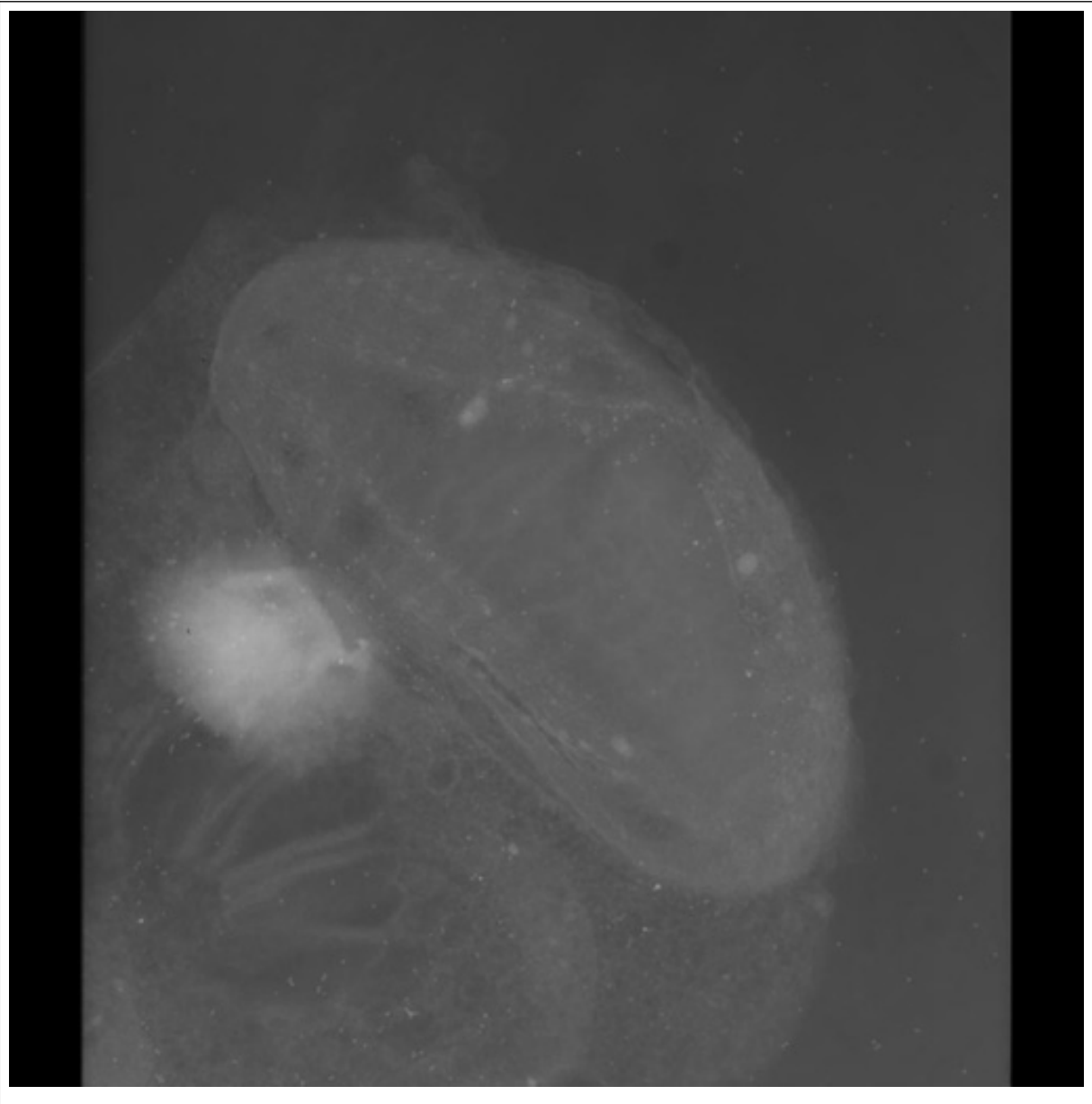
Specimen Description -	
ANATOMICAL_DETAIL	6007
ATLAS_COORD	, ,
CELL_TYPE	algae
STRUCTURE	chloroplast

Electron Microscopy Product -	
--------------------------------------	--

EM_PRODUCT_ID	6004
ACCELERATING_VOLTAGE	400 KEV
EMBEDDING_MEDIUM	resin
MAGNIFICATION	15000
RECORDING_MEDIUM	film
EM_NOTES	Check the magnification before submitting

Raw 2D Image

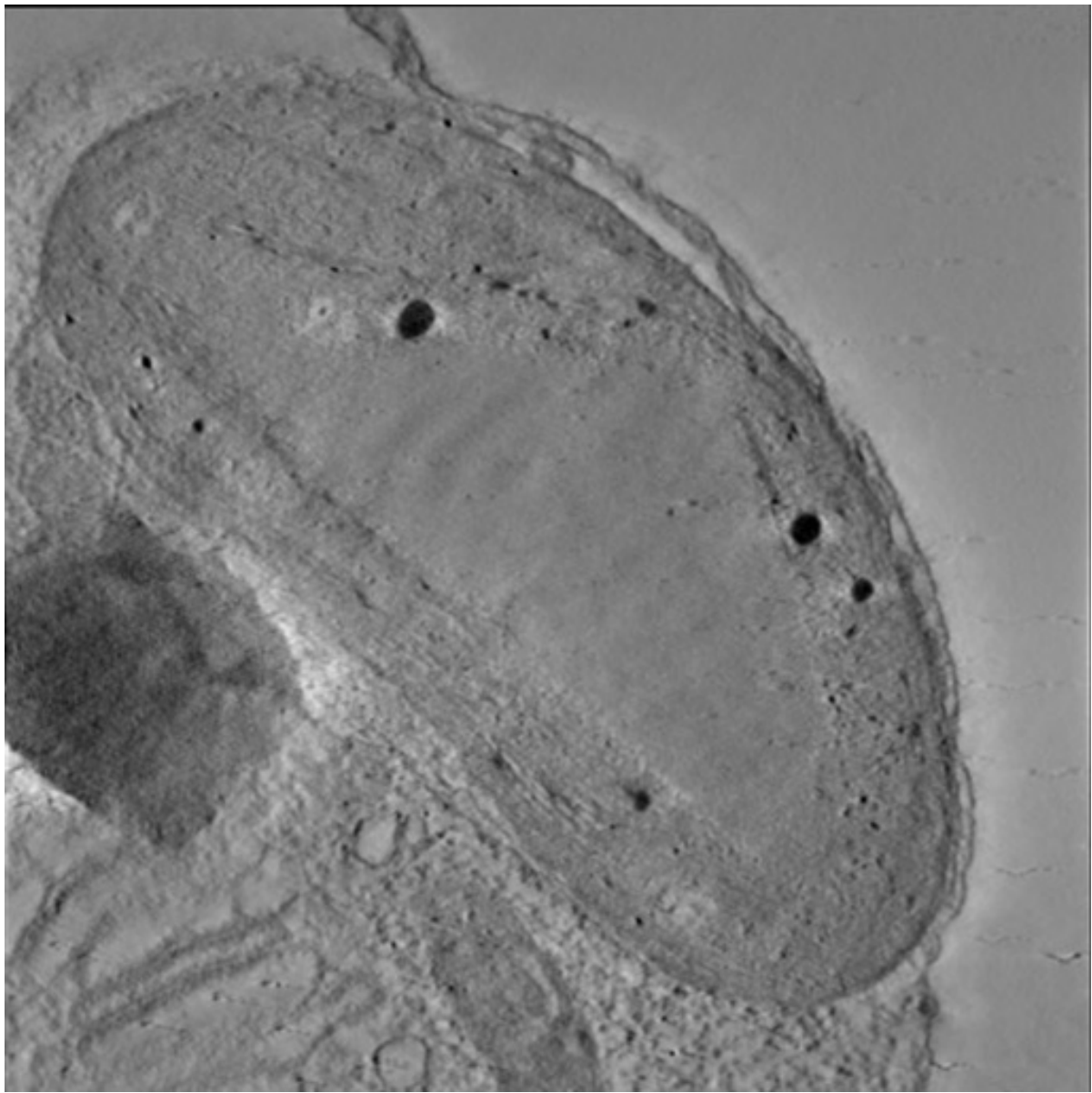
Raw Low Resolution 2D Image -



Raw 2D Image -	
IMAGE2D_ID	6002
BIT_DEPTH	14 bit
DIGITIZED_BY	Rocco Grecco
DIGITIZING_PLATFORM	Photometrics 1024x1024 cooled CCD camera with 19 sq um pixels.
IMAGE_DESC	Tar file containing full resolution unaligned digitized images in suprim format (.f) along with the fiducial mark file used to align them (.fido) and the file containing a list of the angles used (.ang) and the origin file (.origin)
IMAGE_FILE_FORMAT	Suprim
IMAGE_FILE_NAME	/telescience/home/CCDB_DATA_USER.portal/P1576/Experiment_3363/Subject_61/Tissue_75/Microscopy_3432/phaeo27_img.jpg
RAW_DATA_FILE	/telescience/home/CCDB_DATA_USER.portal/P1576/Experiment_3363/Subject_61/Tissue_75/Microscopy_3431/phaeo26_img.tar
THUMBNAIL_DESC	Zero tilt image of a 0.5 um thick section of a blue green algae cell taken with intermediate voltage electron microscopy. Contrast is reversed so that electron dense structures appear bright.
THUMBNAIL_FILE	P1576/phaeo27_img_thmb.jpg
X_RESOLUTION	.005 um/pixel
Y_RESOLUTION	.005 um/pixel
X_SIZE	1024 pixels
Y_SIZE	1024 pixels
NOTES	Check pixel resolution before submitting

Reconstruction

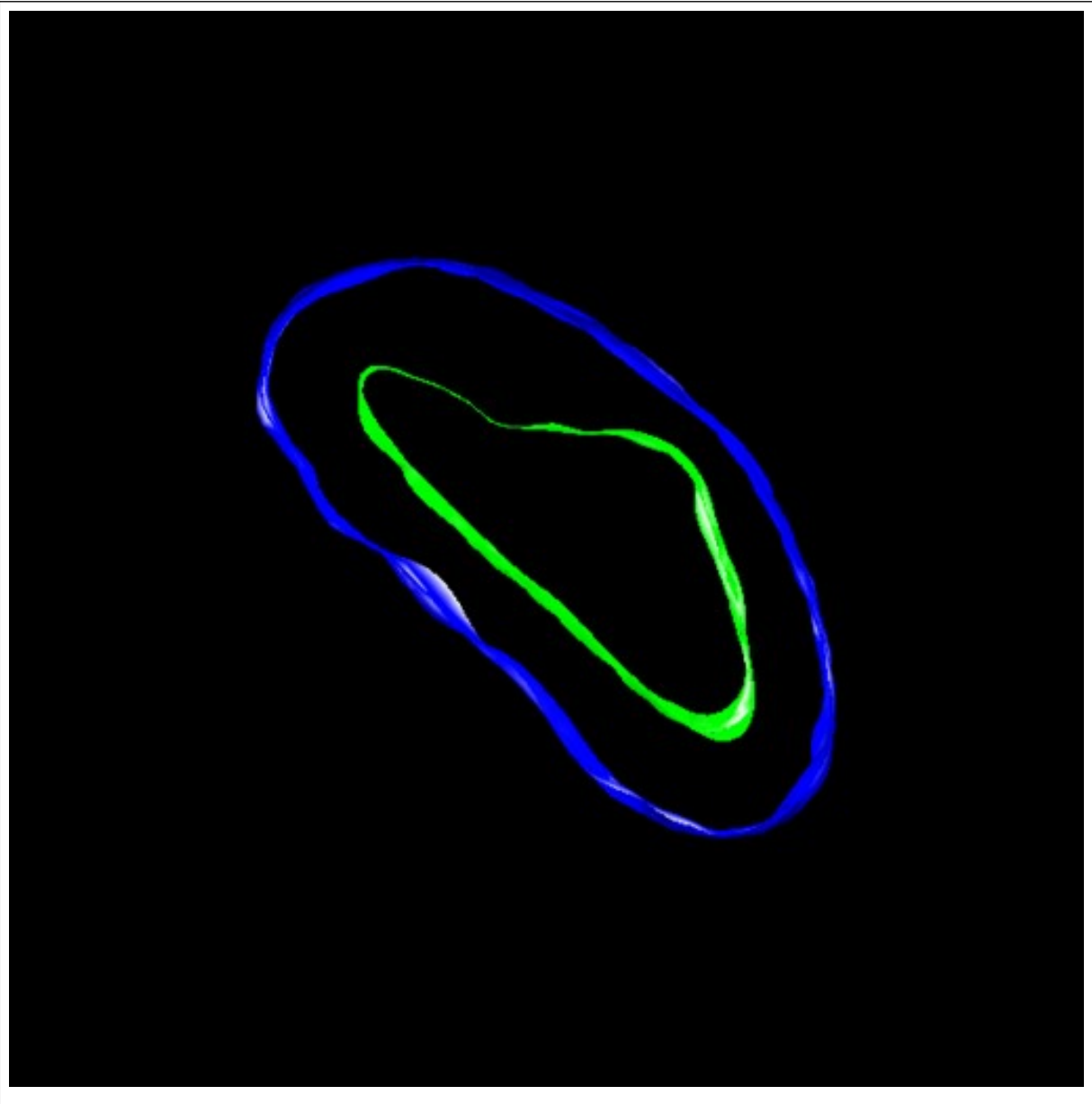
Reconstruction Image -



Reconstruction -	
RECONSTRUCTION3D_ID	6005
ALIGNMENT_METHOD	manual
ALIGNMENT_PROGRAM	xfido, saxalign
CROPPING_COORDINATE1	,
CROPPING_COORDINATE2	,
NOTES	Check voxel scale before submitting.
RECON_ALGORITHM	R-weighted back projection
RECON_DESC	Tar file containing two volumes in Analyze 7.5 format: Obliques75.img/hdr and Phaeo27_91sub.img/hdr. Obliques75 was produced by reslicing Phaeo27_91sub along an oblique angle using the oblique section function of Analyze.
RECON_PROGRAM	Suprim
RECON_TYPE	single tilt electron tomography
VOLUME_DIMENSION	684, 693, 75
VOLUME_NAME	/telescience/home/CCDB_DATA_USER.portal/P1576/Experiment_3363/Subject_61/Tissue_75/Microscopy_3432/phaeo27_vol.tar
VOXEL_SCALE	.005, .005, .005
RECONSTRUCTION_IMAGES_ID	6005
RECON_IMAGE_DESC	Single computed slice of a tomographic volume of a chloroplast contained in a blue green algae cell grown under high light conditions. The pyrenoid is very prominent, although the thylakoid membranes are difficult to resolve.
RECON_FILE_NAME	/telescience/home/CCDB_DATA_USER.portal/P1576/Experiment_3363/Subject_61/Tissue_75/Microscopy_3432/Phaeo27_vol.jpg
VOLUME_THUMBNAIL	P1576/phaeo27_vol_thmb.jpg
ANIMATION_FILE	/telescience/home/CCDB_DATA_USER.portal/P1576/Experiment_3363/Subject_61/Tissue_75/Microscopy_3432/Phaeo27_vol.mov
ANIMATION_FILE_FORMAT	Quicktime
ANIMATION_DESC	Animation through the computed slices of a tomographic volume of a chloroplast contained in a blue green algae cell grown under high light conditions. The pyrenoid is very prominent, although the thylakoid membranes are difficult to resolve.

Segmentation

Segmentation Image -



Segmentation -	
SEGMENTED_OBJECT_ID	6002
DISPLAY_IMAGE_DESC	Surface segmentation of the chloroplast outer membrane (blue) and the pyrenoid (green) from a tomographic reconstruction of the chloroplast from a blue green algae.
DOWNLOADABLE_FILE_DESC	Zipped archive containing the surfaced segmentations of the chloroplast outer membrane and the pyrenoid in Synu format along with the Viewdata file required for viewing with Synu. The original trace file (.trace) containing the manual contours generated in Xvoxtrace is also included.
IS_MANUAL	Y
LABELING_RANK	none
NUMBER_OF_OBJECT	1
OBJECT_DESC	chloroplast outer membrane
OBJECT_NAME	membrane
OBJECT_TYPE	surface
SEGMENTED_OBJ_2D_IMAGE	/telescience/home/CCDB_DATA_USER.portal/P1576/Experiment_3363/Subject_61/Tissue_75/Microscopy_3432/phaeo27_seg.jpg
SEGMENTED_OBJECT_ID	6002
SEGMENT_PERSON_NAME	Rocco Grecco
SEG_DESC	Manual segmentation of the chloroplast outer membrane and pyrenoid membrane using Xvoxtrace 2.7 followed by surfacing using Synu. Thylakoid membranes were difficult to resolve and so were not completely traced.
SEG_FILE_NAME	/telescience/home/CCDB_DATA_USER.portal/P1576/Experiment_3363/Subject_61/Tissue_75/Microscopy_3432/Phaeo27_seg.zip
THUMBNAIL	P1576/phaeo27_seg_thmb.jpg
SEGMENTED_OBJECT_ID	6003
DISPLAY_IMAGE_DESC	Surface segmentation of the chloroplast outer membrane (blue) and the pyrenoid (green) from a tomographic reconstruction of the chloroplast from a blue green algae.
DOWNLOADABLE_FILE_DESC	Zipped archive containing the surfaced segmentations of the chloroplast outer membrane and the pyrenoid in Synu format along with the Viewdata file required for viewing with Synu. The original trace file (.trace) containing the manual contours generated in Xvoxtrace is also included.
IS_MANUAL	Y
LABELING_RANK	none
NUMBER_OF_OBJECT	1
OBJECT_DESC	pyrenoid
OBJECT_NAME	pyrenoid
OBJECT_TYPE	surface
SEGMENTED_OBJ_2D_IMAGE	/telescience/home/CCDB_DATA_USER.portal/P1576/Experiment_3363/Subject_61/Tissue_75/Microscopy_3432/phaeo27_seg.jpg
SEGMENTED_OBJECT_ID	6003
SEGMENT_PERSON_NAME	Rocco Grecco
SEG_DESC	Manual segmentation of the chloroplast outer membrane and

Segmentation -

	pyrenoid membrane using Xvoxtrace 2.7 followed by surfacing using Synu. Thylakoid membranes were difficult to resolve and so were not completely traced.
SEG_FILE_NAME	/telescience/home/CCDB_DATA_USER.portal/P1576/Experiment_363/Subject_61/Tissue_75/Microscopy_3432/Phaeo27_seg.zip
THUMBNAIL	P1576/phaeo27_seg_thmb.jpg

USER AGREEMENT

Data Sharing and Citation Policy: The mission of the CCDB is to promote data sharing among scientists interested in cellular and subcellular anatomy and in developing computer algorithms for 3D reconstruction and modeling of such data. Data sets may be viewed or shared at the discretion of the author of the data. In some cases, the data may be freely viewed and downloaded without contacting the original author while in other cases, permission of the author may have to be obtained prior to downloading the data. In either case, failure to cite or give proper credit to the original authors who collected these data in subsequent published articles or presentations is a material breach of this User Agreement. CCDB requires all researchers re-analyzing these published data via the CCDB access to reference the original published article and the CCDB. An example of an appropriate acknowledgement is provided on the CCDB web site. CCDB is not in a position to police every intended use of these data. The scientific community will self-police the compliance of this contractual obligation.

DISCLAIMER

THE DATA PROVIDED BY THE CCDB ARE FREELY DISTRIBUTED AND WITHOUT CHARGE. THESE DATA ARE PROVIDED BY THE CCDB "AS IS" AND WITHOUT ANY EXPRESS OR IMPLIED WARRANTIES, INCLUDING, BUT NOT LIMITED TO, THE IMPLIED WARRANTIES OF MERCHANTABILITY, FITNESS FOR A PARTICULAR PURPOSE, OR NON-INFRINGEMENT, TO ANY THIRD PARTY RIGHTS. IN NO EVENT SHALL THE CCDB BE LIABLE FOR ANY DIRECT, INDIRECT, INCIDENTAL, SPECIAL, EXEMPLARY, OR CONSEQUENTIAL DAMAGES (INCLUDING, BUT NOT LIMITED TO, PROCUREMENT OF SUBSTITUTE GOODS OR SERVICES; LOSS OF USE, DATA, OR PROFITS; OR BUSINESS INTERRUPTION) HOWEVER CAUSED AND ON ANY THEORY OF LIABILITY, WHETHER IN CONTRACT, STRICT LIABILITY, OR TORT (INCLUDING NEGLIGENCE OR OTHERWISE) ARISING IN ANY WAY OUT OF THE USE OF THESE DATA, EVEN IF ADVISED OF THE POSSIBILITY OF SUCH DAMAGE.

USER NOTIFICATION

For large size image data, it will take several minutes to download, please be patient. Thanks!

ACKNOWLEDGEMENT

Data used from the CCDB should be appropriately referenced, including both the author of the data and the CCDB. If the data were from a published study, the reference is included in the database record. The following reference should be cited for the CCDB:

Martone, M. E., Gupta, A., Wong, M., Qian, X., Sosinsky, G., Ludaescher, B., and Ellisman, M. H. A cell centered database for electron tomographic data. *J. Struct. Biology* 138: 145-155, 2002.

In addition, the support for the Cell Centered Database should be included in the acknowledgement section of any publication: The Cell Centered Database is supported by NIH grants from NCRR RR04050, RR RR08605 and the Human Brain Project DA016602 from the National Institute on Drug Abuse, the National Institute of Biomedical Imaging and Bioengineering and the National Institute of Mental Health, and NSF grants supporting the National Partnership for Advanced Computational Infrastructure NSF-ASC 97-5249 and MCB-9728338.

Maryann Martone