

INFORMAL REPORT AND INDEX OF
NAVIGATION, DEPTH, MAGNETIC AND SUBBOTTOM PROFILER DATA

(Issued September 1987)

CROSSGRAIN EXPEDITION

LEG 1

San Diego, California (17 February 1987)
to
Papeete, Tahiti (25 March 1987)

R/V T. Washington

Chief Scientist - E. L. Winterer

Resident Marine Tech - J. Boaz

Post-Cruise Processing and Report Preparation
by S.I.O. Geological Data Center.

Data Collection and Processing Funded by
University of California General Funds
and U.S. Navy-0720

NOTE: This is an index of underway geophysical data edited and processed after the completion of the cruise leg and is intended primarily for informal use within the institution. This document is not to be reproduced or distributed outside Scripps without prior approval of the chief scientist or the Geological Data Center, Scripps Institution of Oceanography, La Jolla, California 92093.

GDC Cruise I.D.# 228

INFORMAL REPORT AND INDEX OF NAVIGATION
AND UNDERWAY GEOPHYSICAL DATA

Processed by the Geological Data Center
Scripps Institution of Oceanography

Contents:

-
- Index Chart - gives track of cruise leg, dates, ports, and mileage of each type of data collected.
- Track Charts - annotated with dates and hour ticks.
- Profiles - depth, magnetic anomaly and gravity free air anomaly vs. distance. Sections of track having subbottom profiles (airgun or watergun) records have a wide black line along the bottom of the profile. Sections having Sea Beam are indicated by a narrow black line.
- Sample Index - list of beginning and end times and positions of all underway records as well as all other samples and measurements (geology, biology, physical oceanography, etc.) collected on the cruise leg.

NOTE: One or more of the underway data types may not be collected on a given cruise leg.

For information on the availability and reproduction costs of data in the following forms, contact S. M. Smith, Curator, Geological Data Center, Scripps Institution of Oceanography, La Jolla, CA 92093. Phone (619)534-2752.

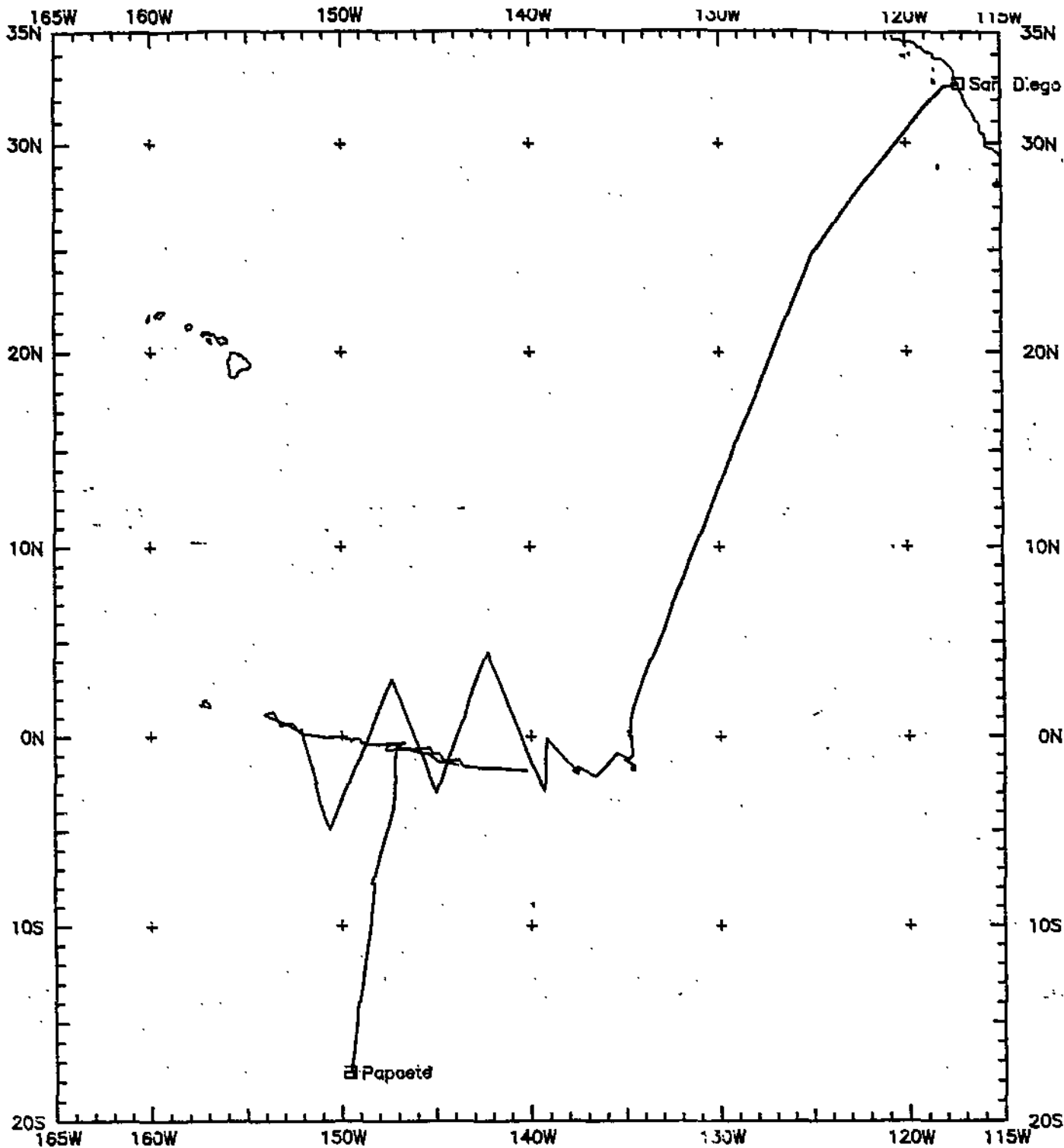
1. Navigation listing with times and positions of course and speed changes, fixes and drift velocity.
2. Depth compilation plots - compilation plots at the traditional scale of 4in/degree longitude (1:1,000,000) are no longer produced for Sea Beam cruises. Custom plots may be requested of vertical beam (2 $\frac{2}{3}$ degree beam width) depths retrieved at one minute intervals of ship time.
3. Plots of depths, magnetics or gravity profiles along track - custom plots at various map and profile scales on Mercator projection may be requested.
4. Separate time series files of navigation, depth, gravity and magnetics as well as these data merged in the MGD77 Exchange format on magnetic tape.
5. Microfilm or Xerox copies of:
 - a. Echosounder records - 12 and 3.5 kHz frequency
 - b. Subbottom profiler records
 - c. Magnetometer records
 - d. Gravity records
 - e. Underway data log book

SIO Sea Beam Data

The following forms are available, subject to approval of the cruise leg chief scientist:

- 1) Archive copy of contour swath books generated in real time on board ship available for inspection at the data center.
- 2) Microfilm (35mm flowfilm) containing swath books plus, for some cruises, the Sea Beam monitor record and navigation list.
- 3) Sea Beam merged tapes - Sea Beam data merged with navigation. (Navigation is edited to the extent that DR courses and speeds are edited and poor fixes are removed after inspection of drift vectors between fix pairs. No editing is done on the basis of adjusting to overlapping Sea Beam swaths.)
- 4) Archive contour plots - 16"/degree chart scale, with contour interval nominally 50m, are generated for all transit lines. Some survey areas are plotted at appropriate scales as well. Available for inspection at data center; additional copies may be generated from plot files stored on tape.
- 5) Custom generated plots of Sea Beam swaths on Mercator projection in four colors at variable plot scales and contour intervals. There are provisions to adjust positions of individual track lines and to edit out beams (bad data or overlapping data on inside of turns).

revised October 1986



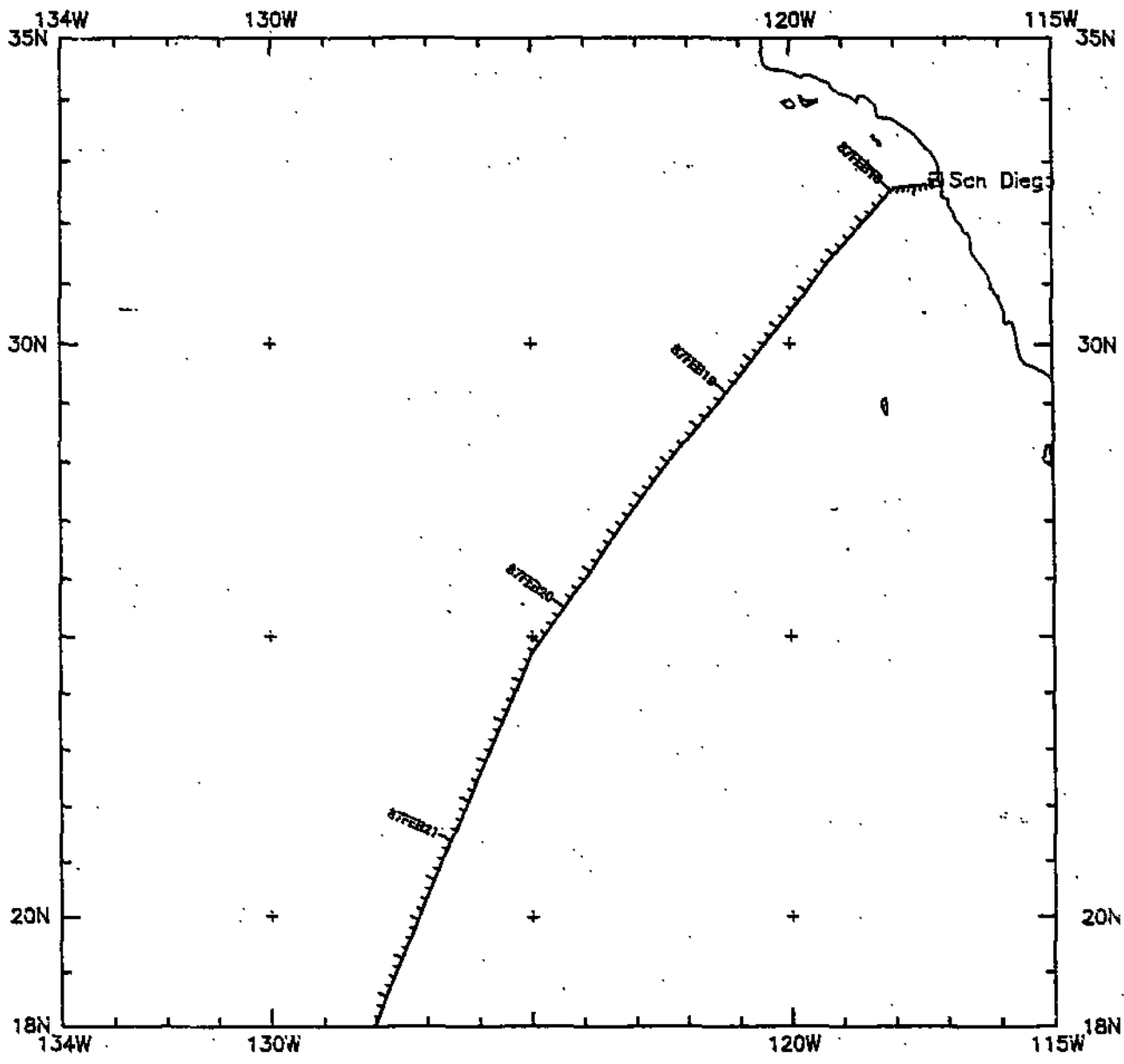
CROSSGRAIN LEG 1
Track at .1300 in/deg

CROSSGRAIN EXPEDITION
LEG 1

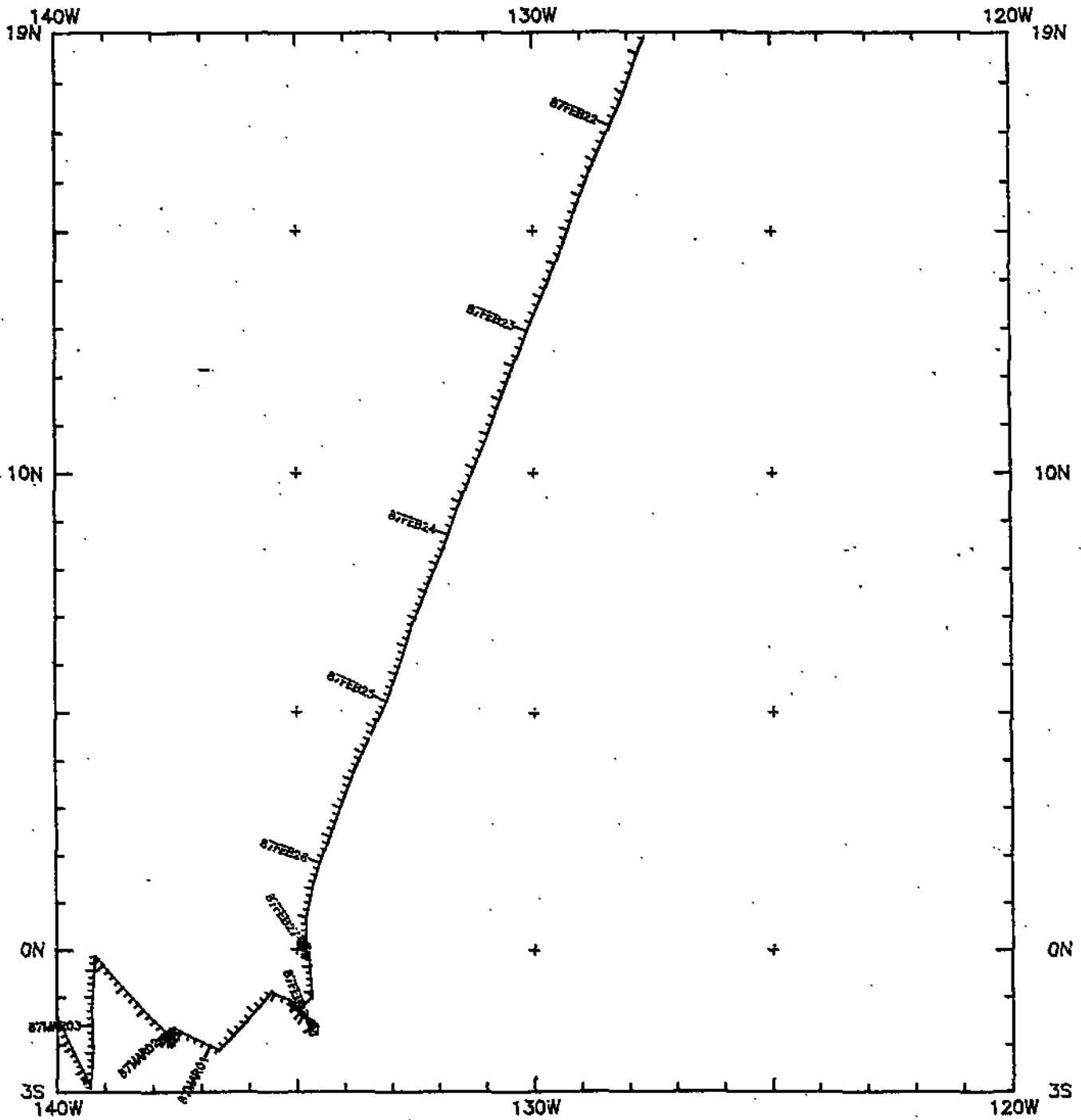
CHIEF SCIENTIST: E. L. Winterer
 PORTS: San Diego, Calif. - Papeete, Tahiti
 DATES: 17 February - 25 March 1987
 SHIP: R/V T. Washington

TOTAL MILEAGE OF UNDERWAY DATA COLLECTED

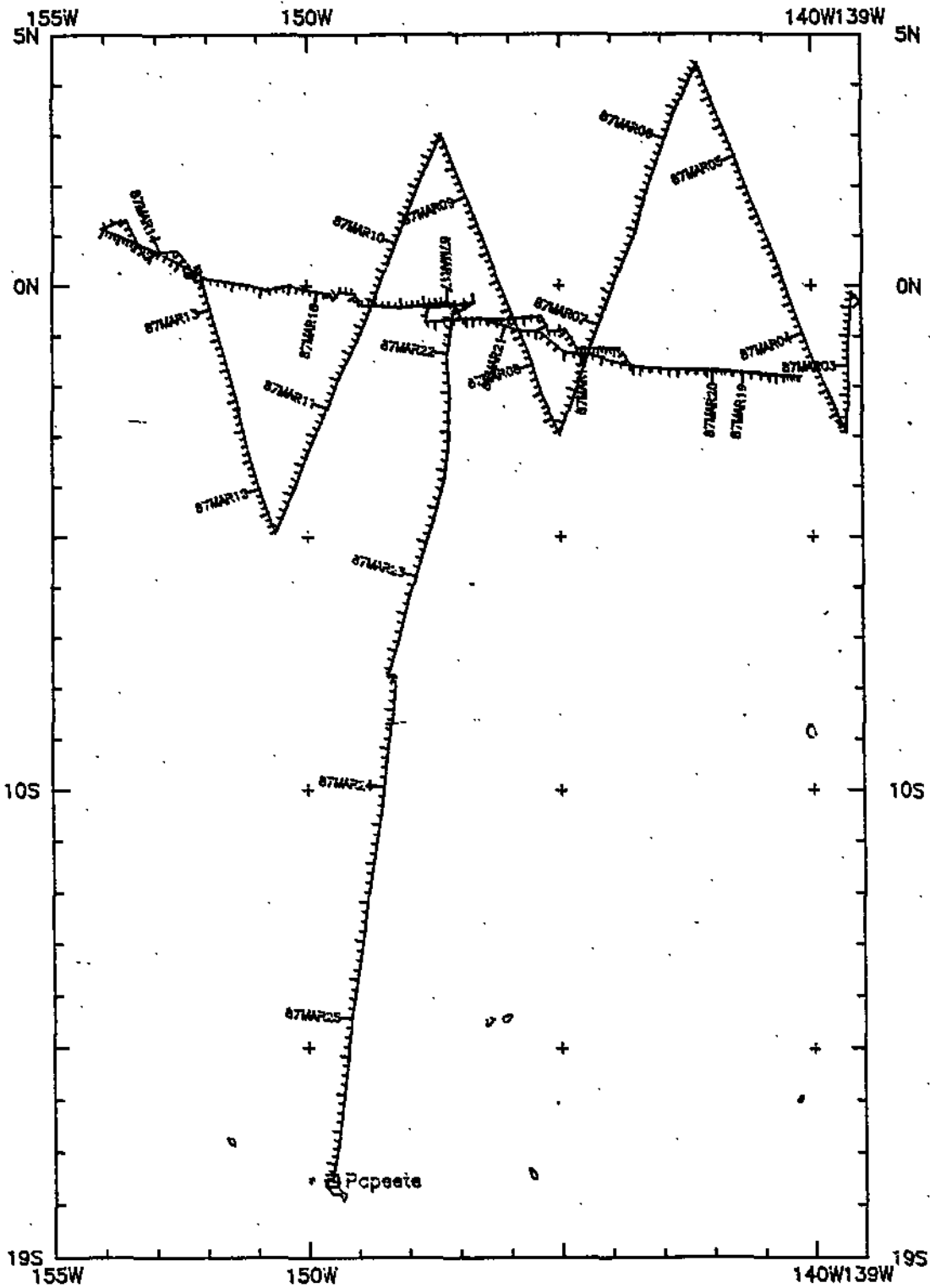
- 1) Cruise - 8376 miles
- 2) Bathymetry - 8286 miles
- 3) Magnetics - 8176 miles
- 4) Seismic Reflection - 8096 miles
- 5) Gravity - 7086 miles
- 6) SeaBeam - 8286 miles



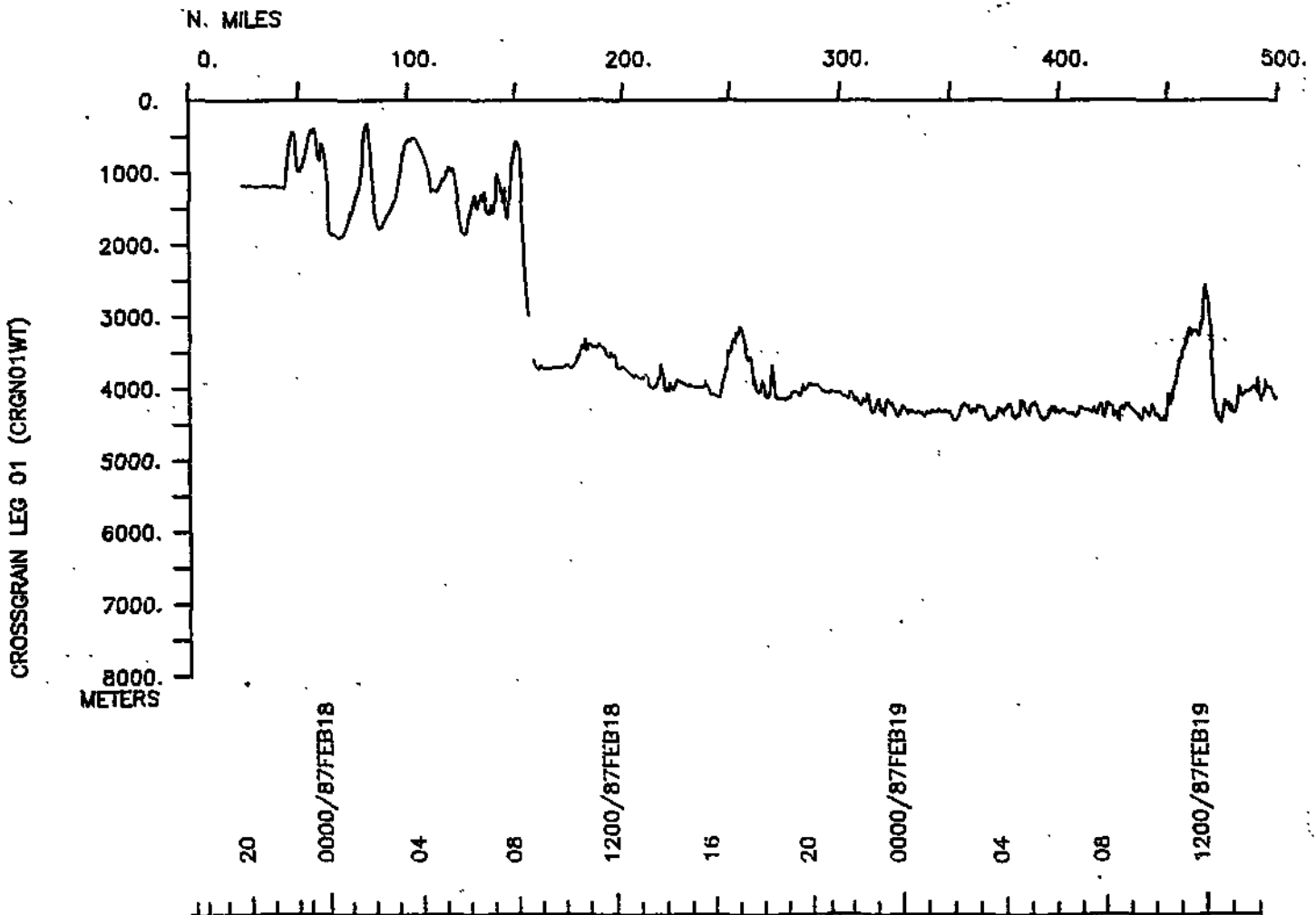
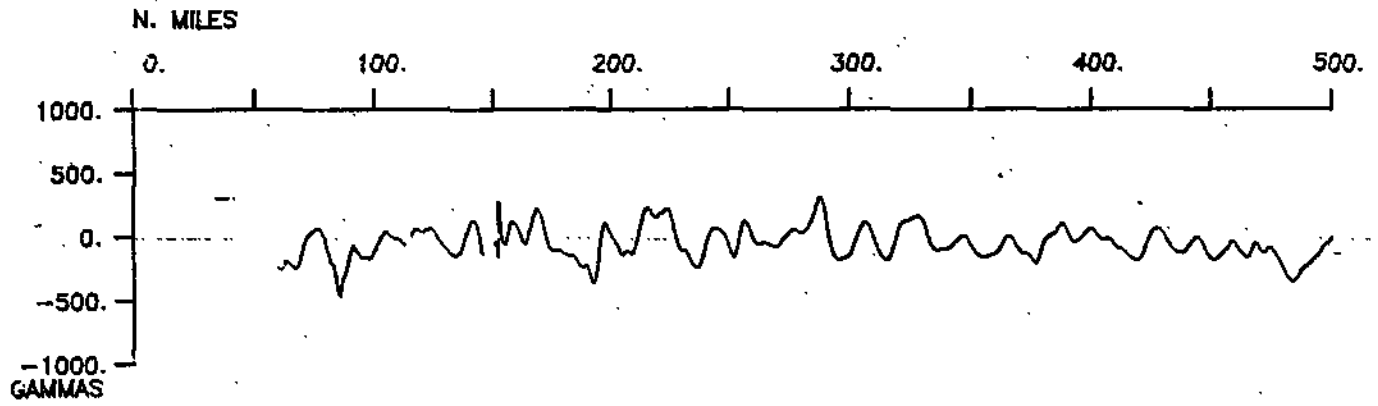
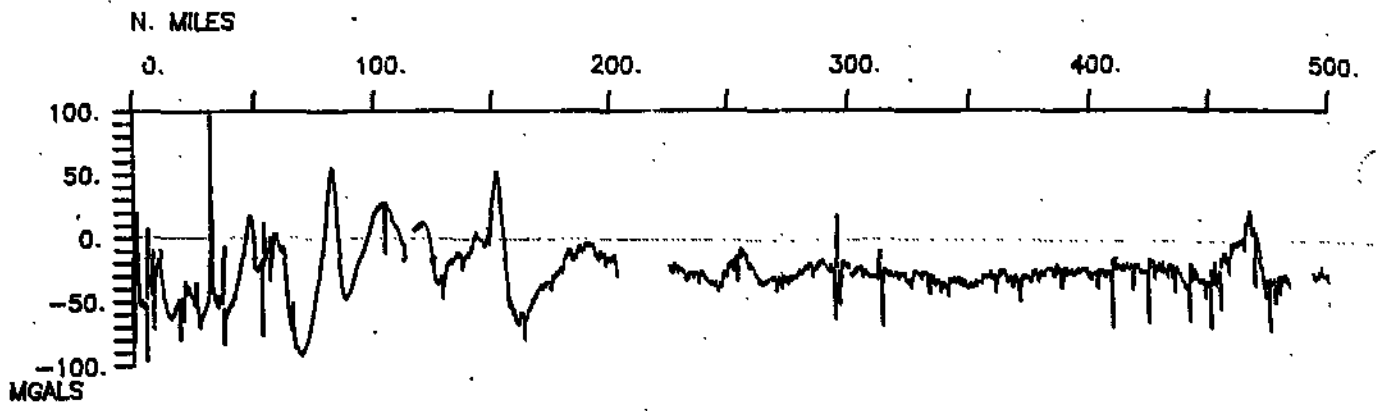
CROSSGRAIN LEG 1 (CRGN01WT) - R/V Washington
Track # 1 at 0.312 inch/degree longitude

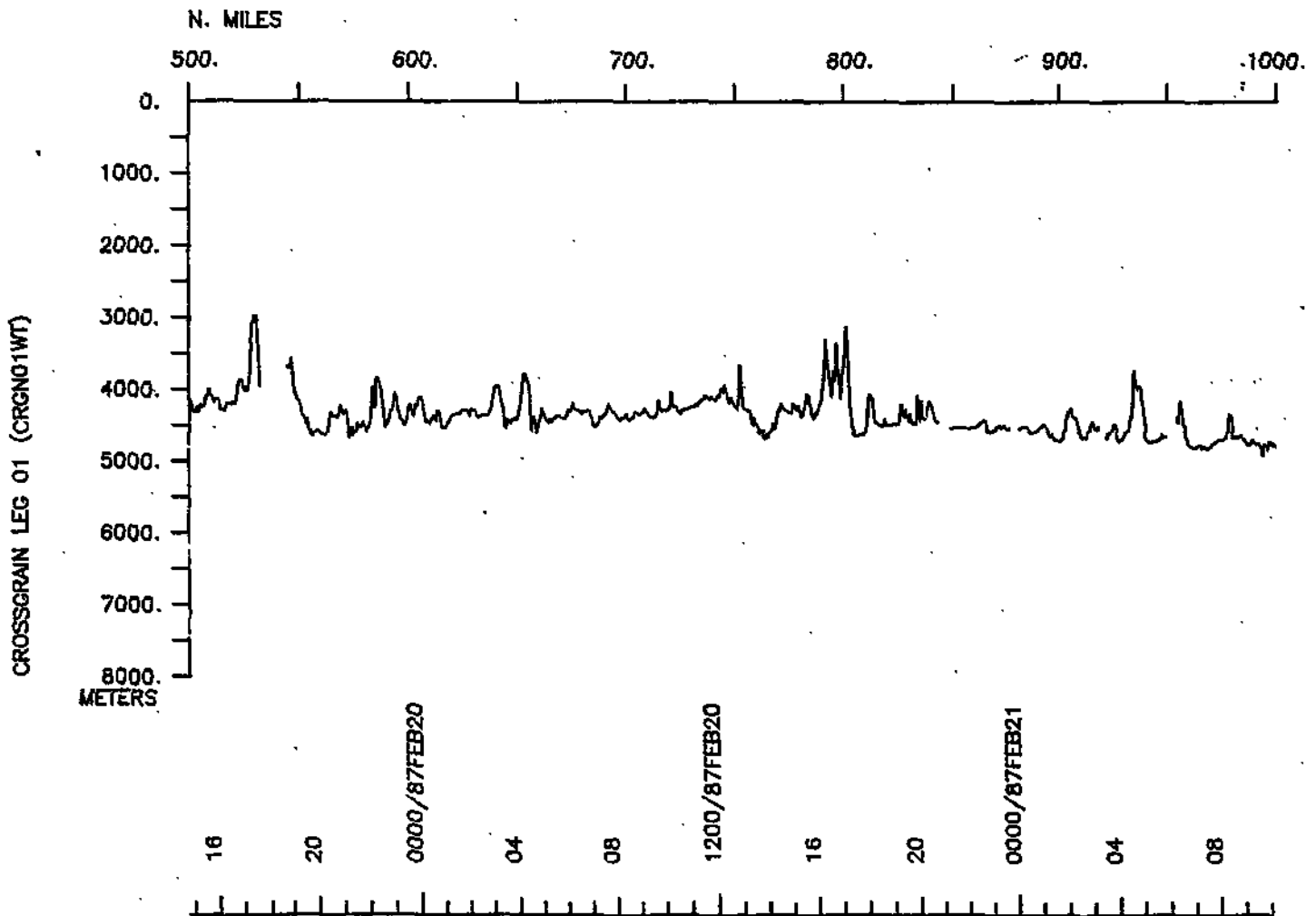
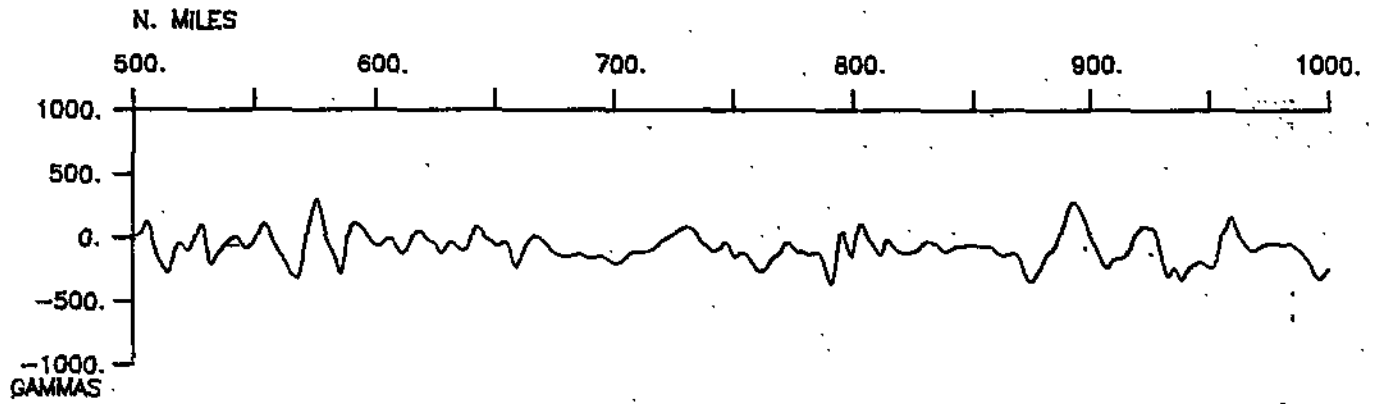
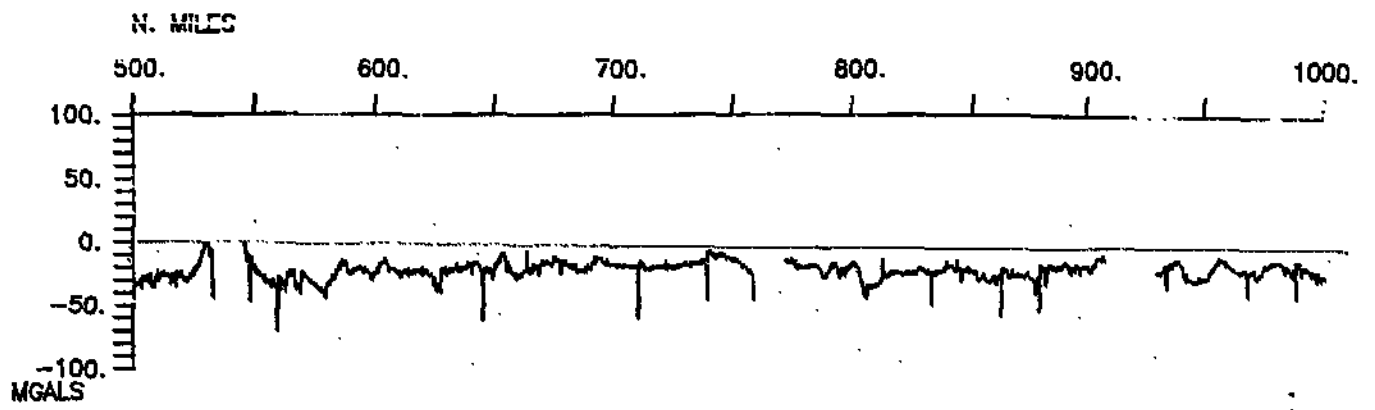


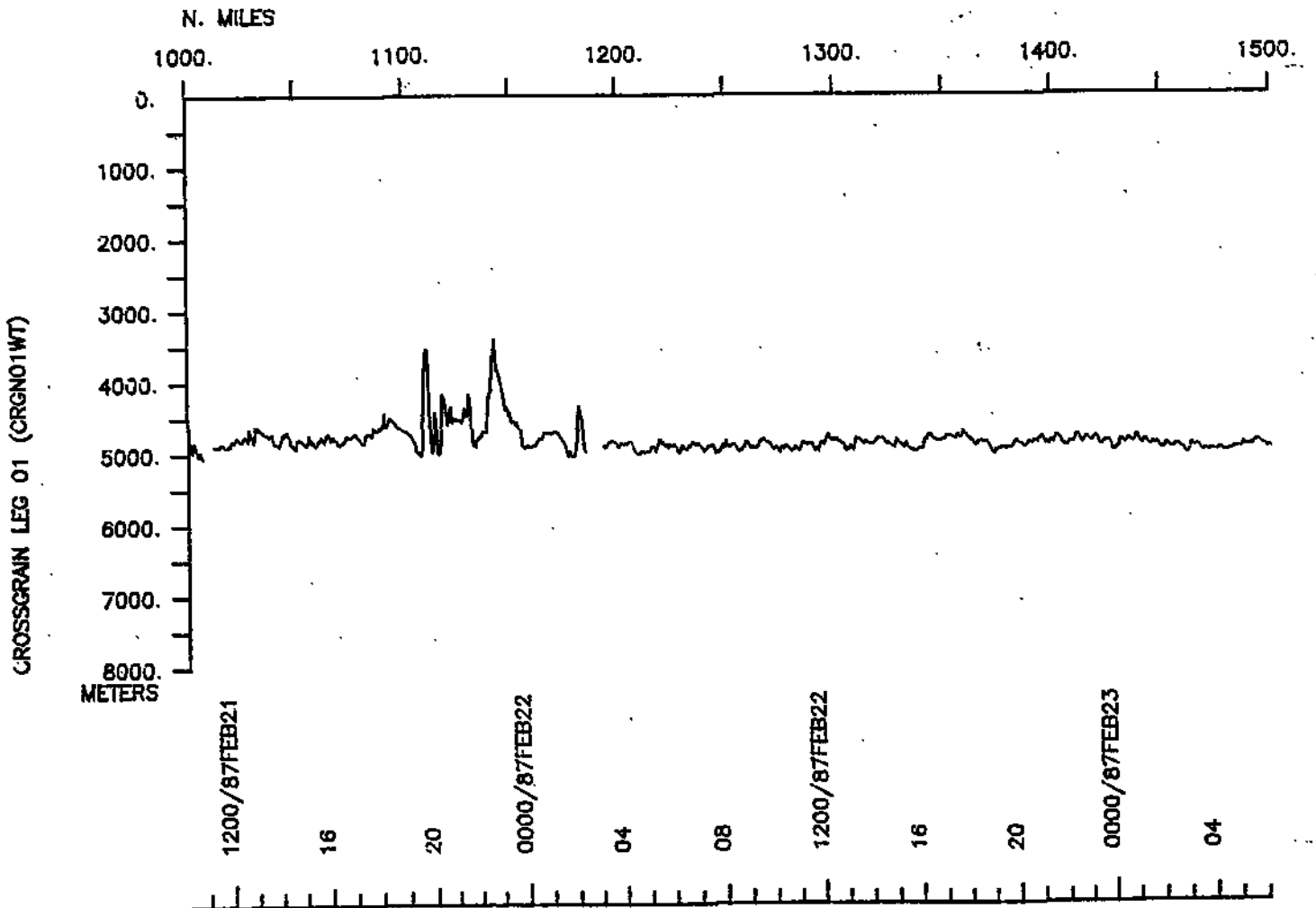
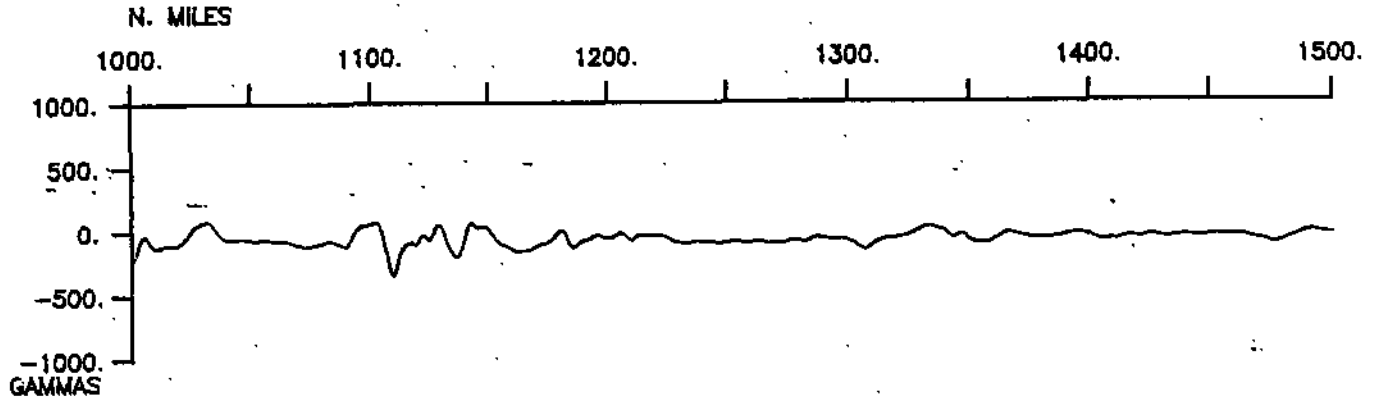
CROSSGRAIN LEG 1 (CRGN01WT) - R/V Washington
 Track # 2 at 0.312 inch/degree longitude

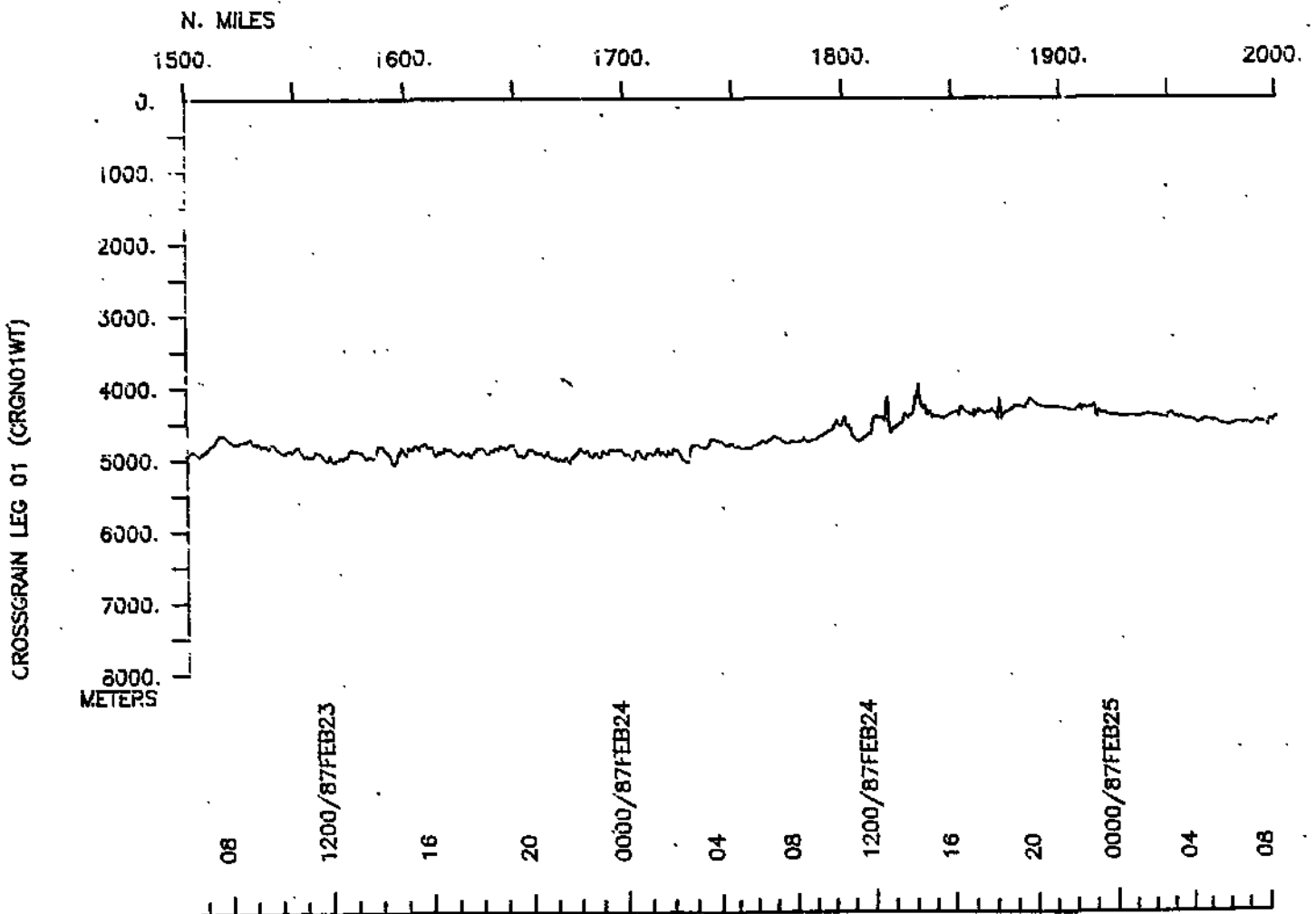
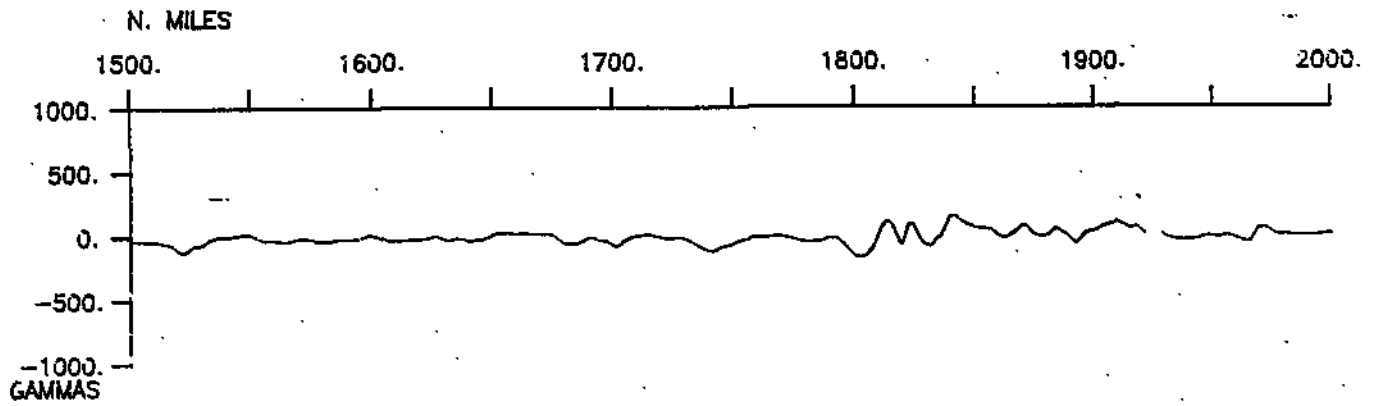
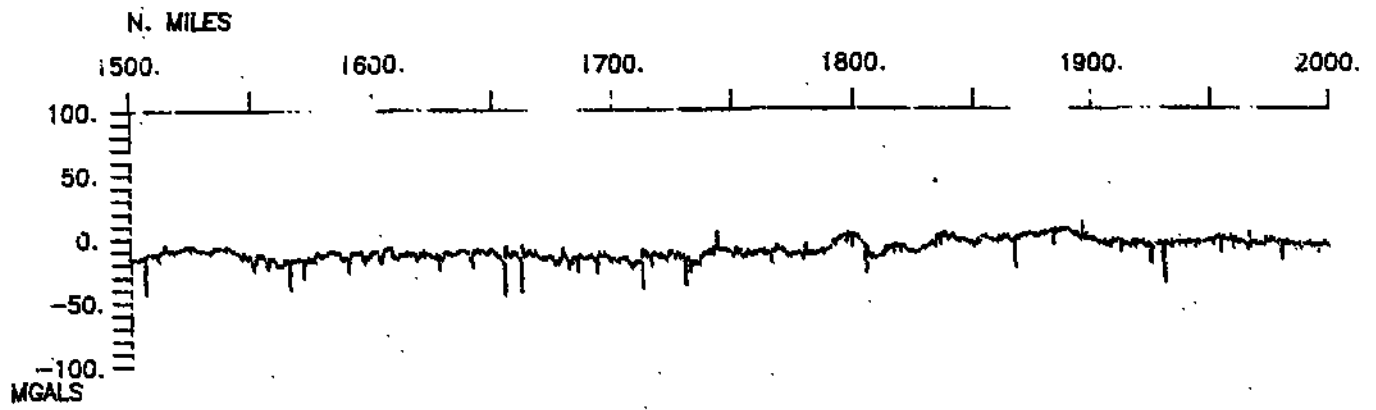


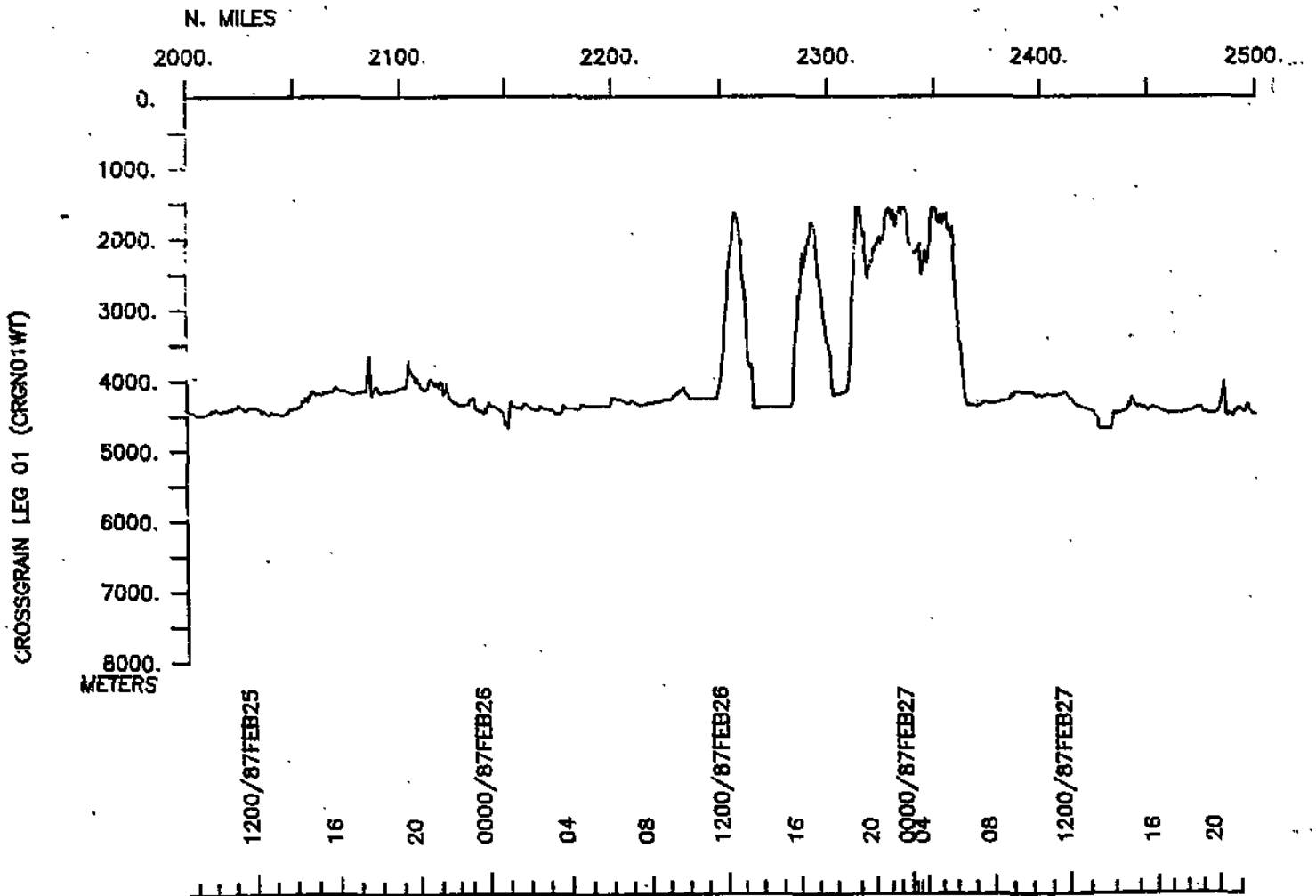
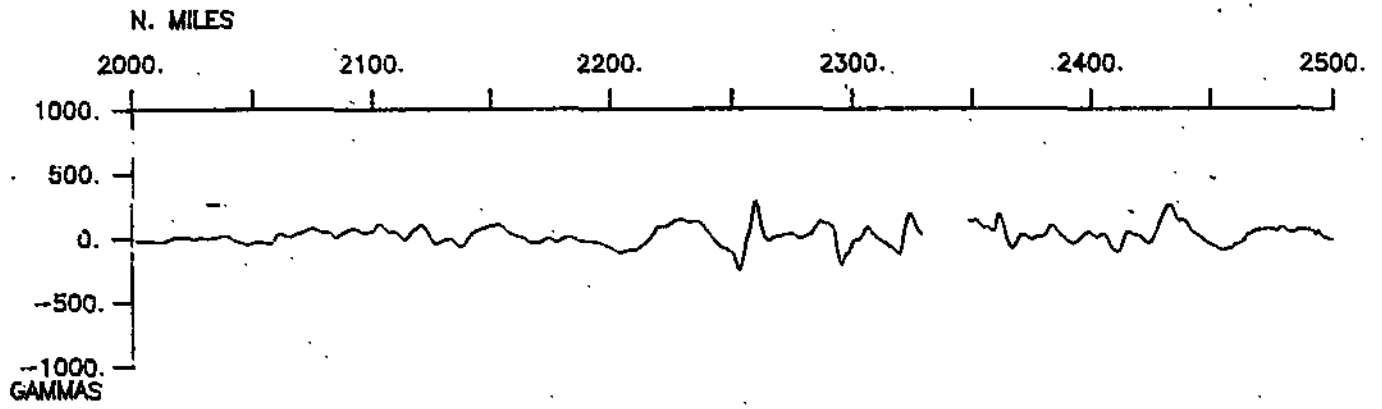
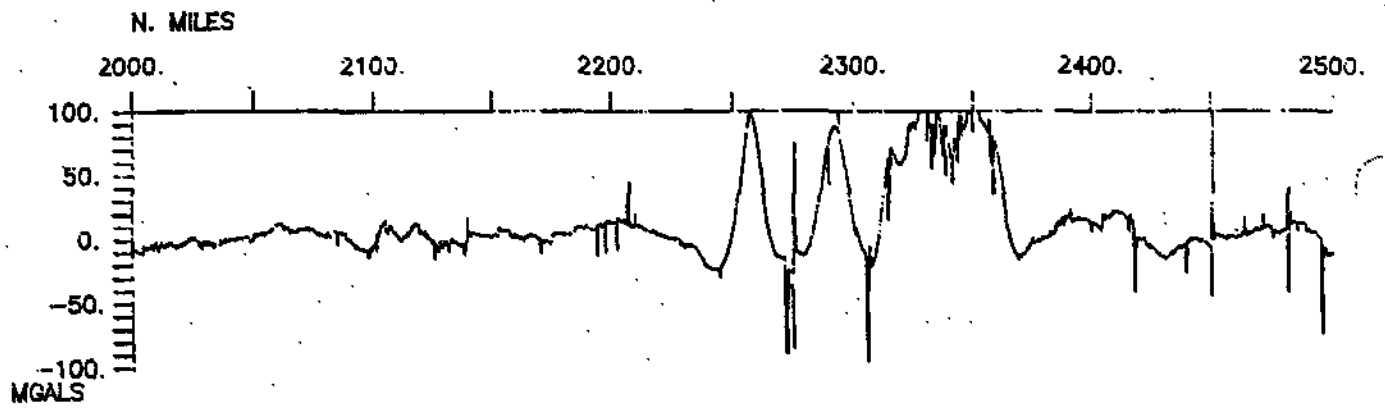
CROSSGRAIN LEG 1 (CRGN01WT) - R/V Washington
Track # 3 at 0.312 inch/degree longitude

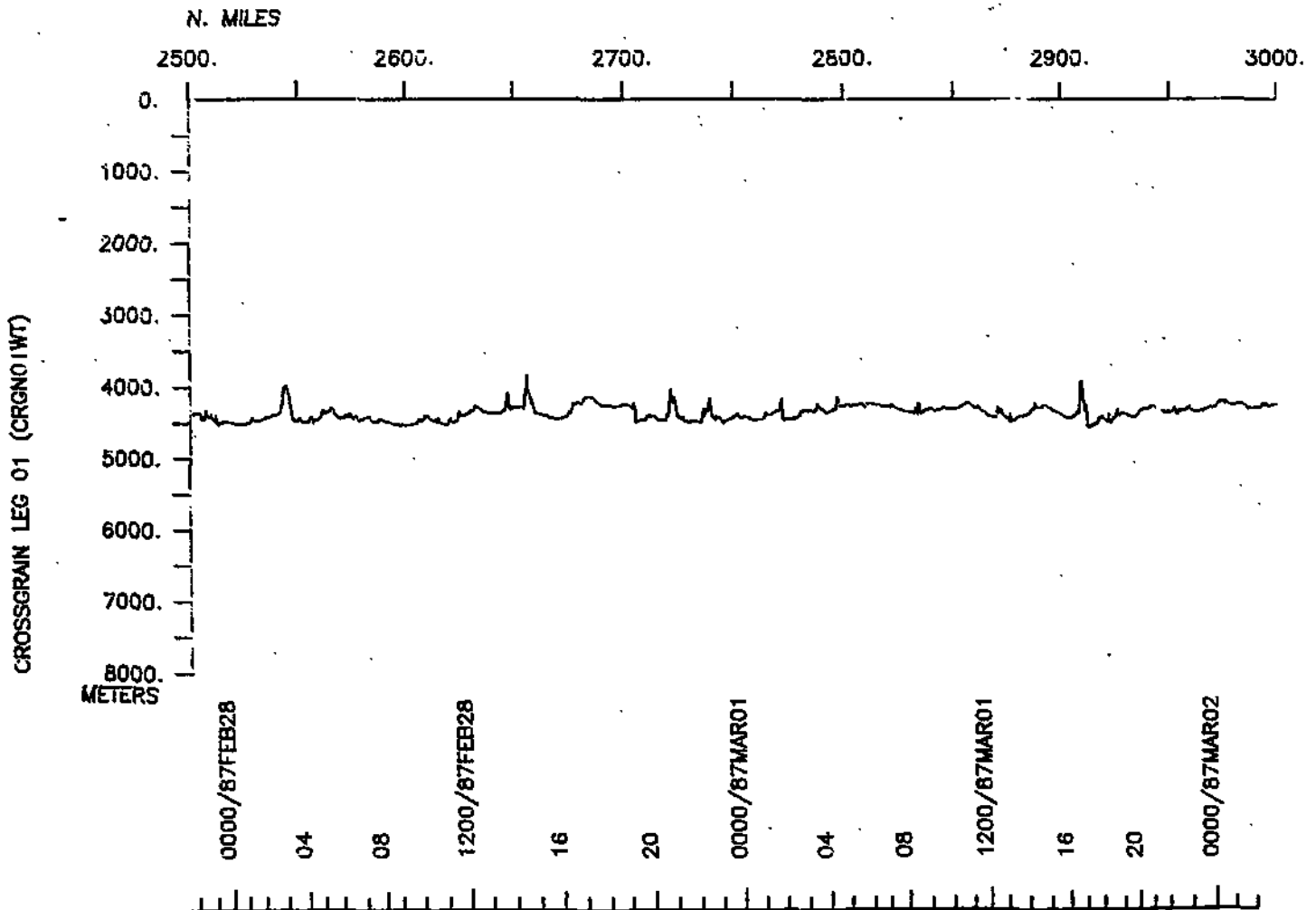
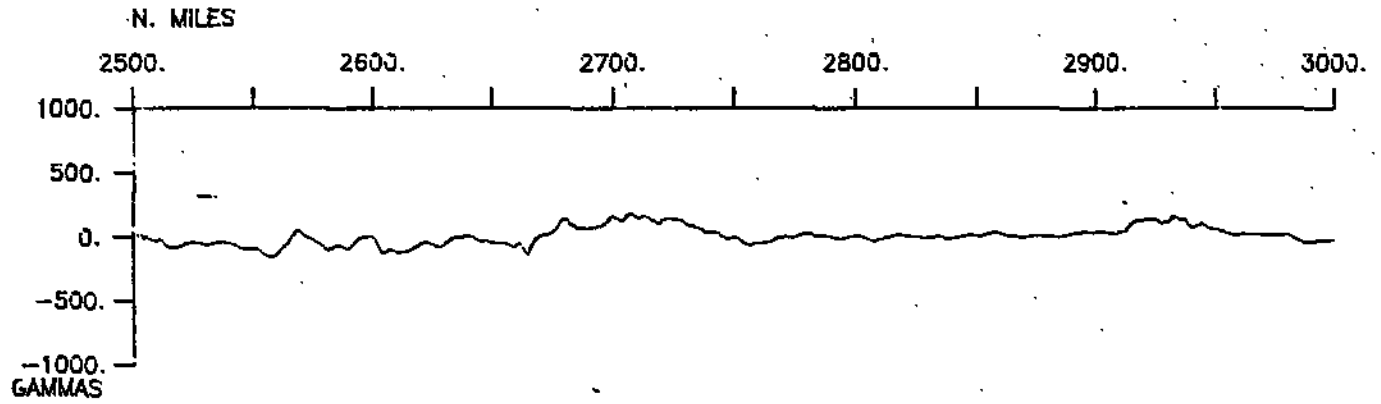
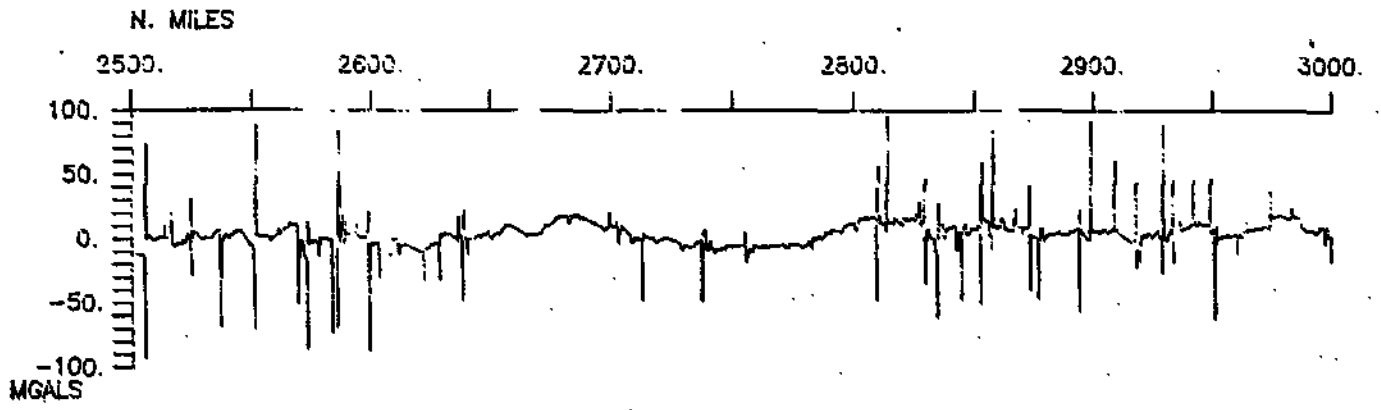


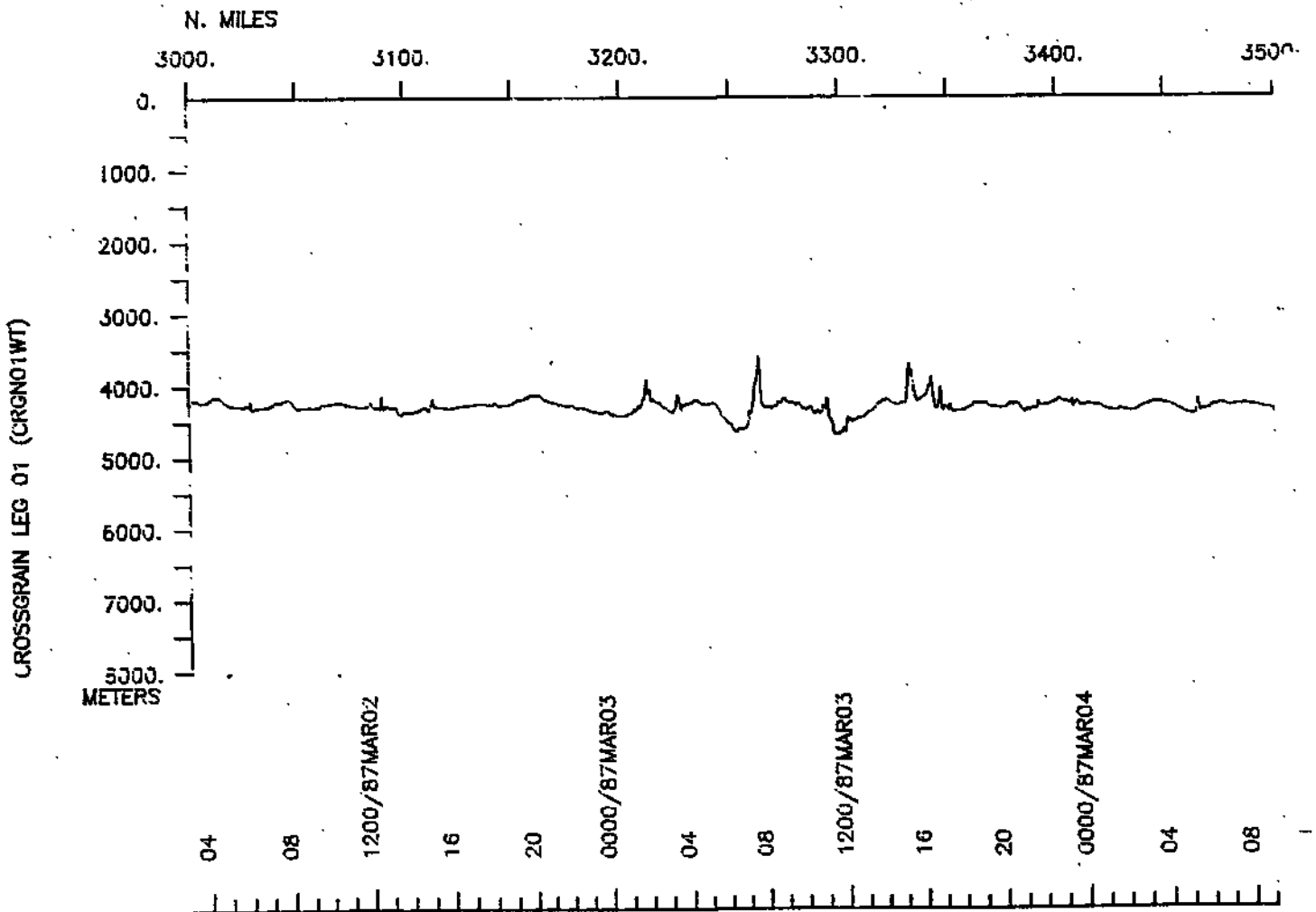
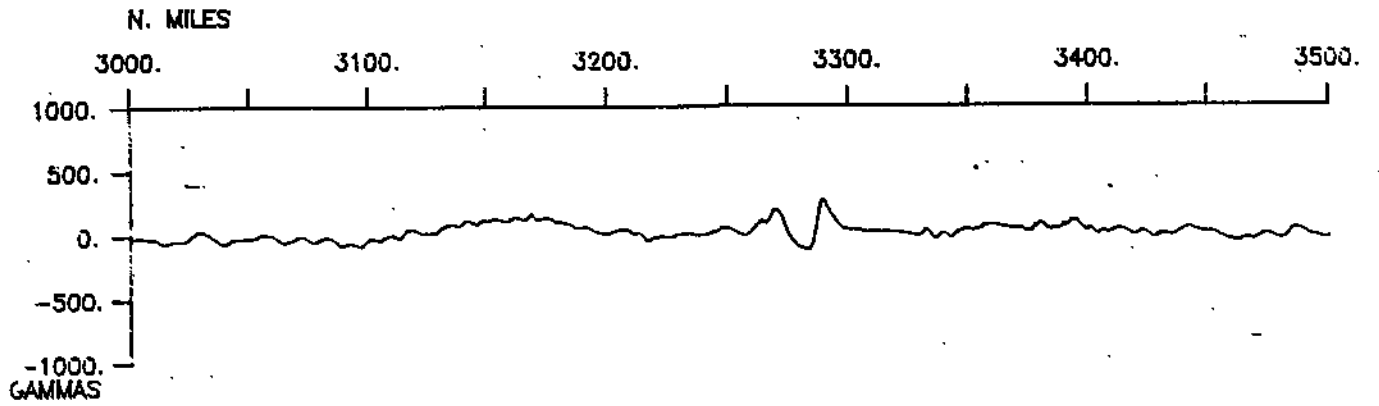
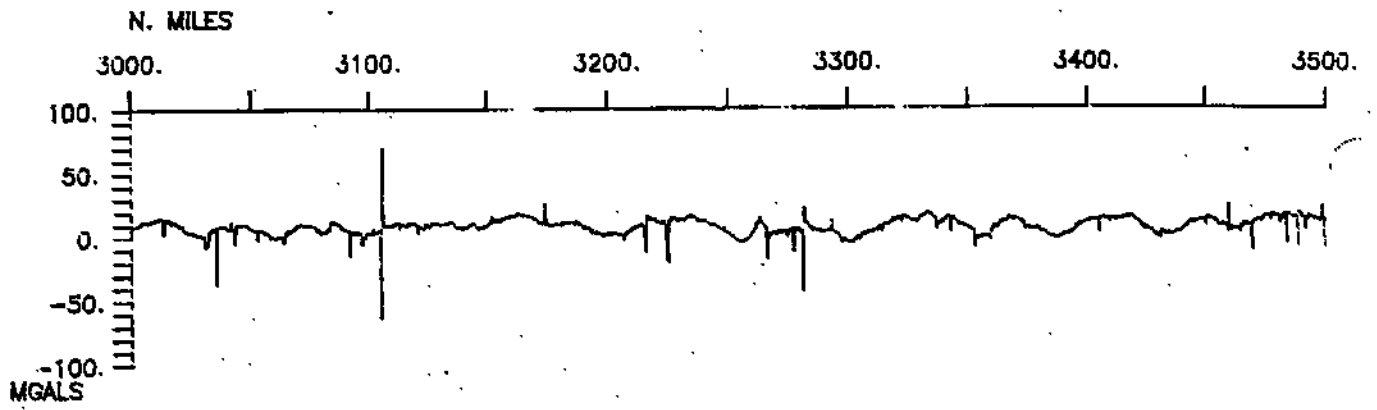


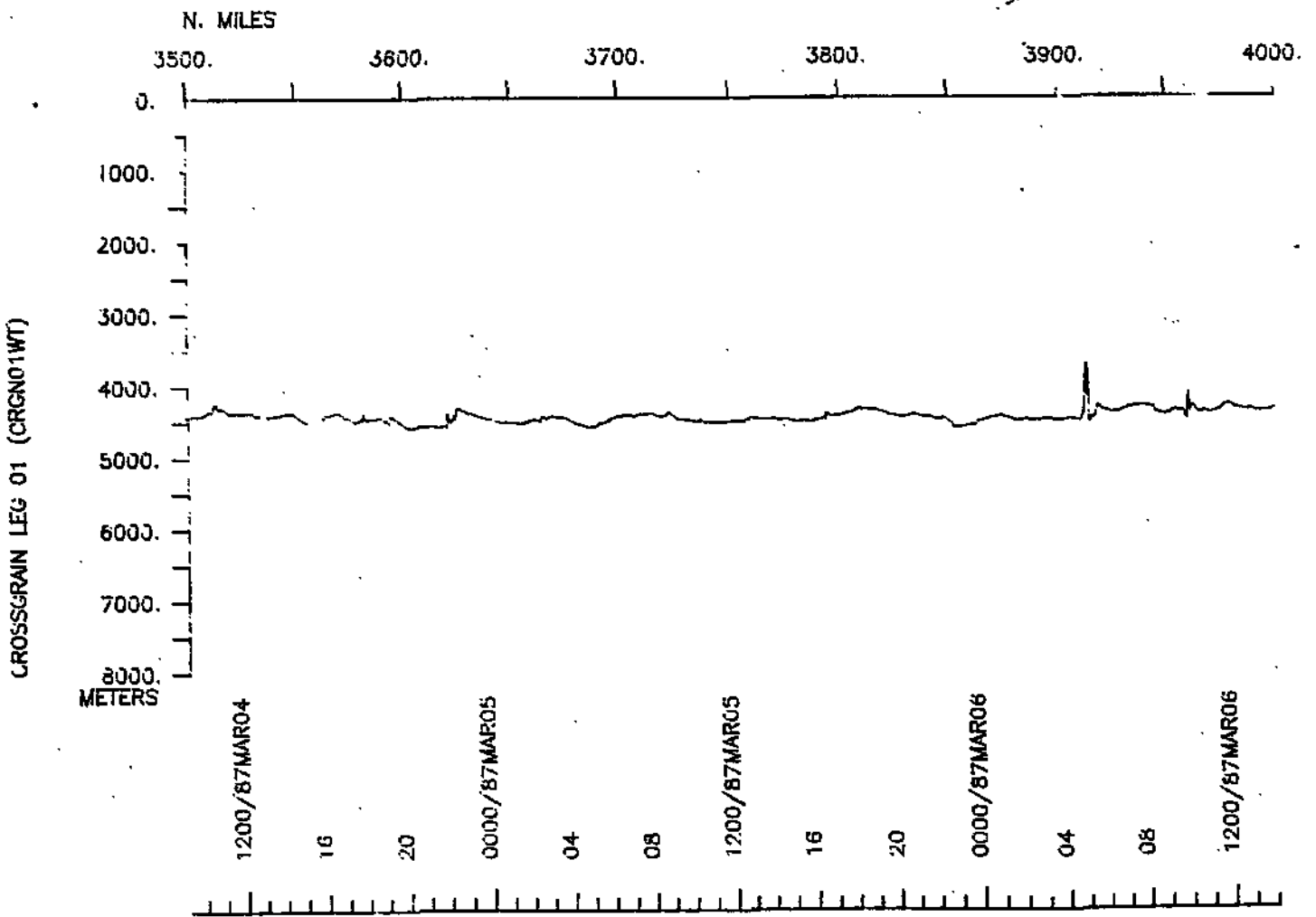
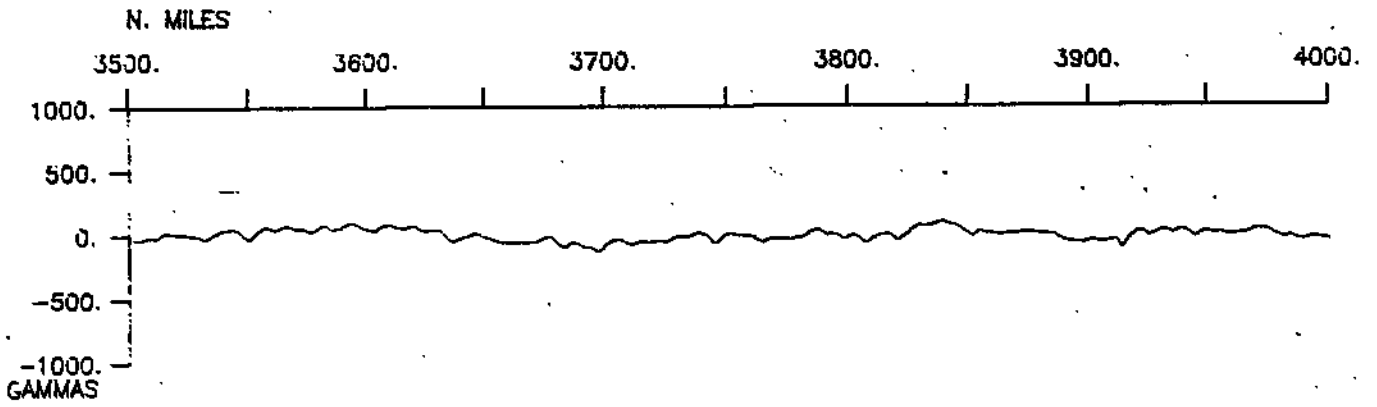
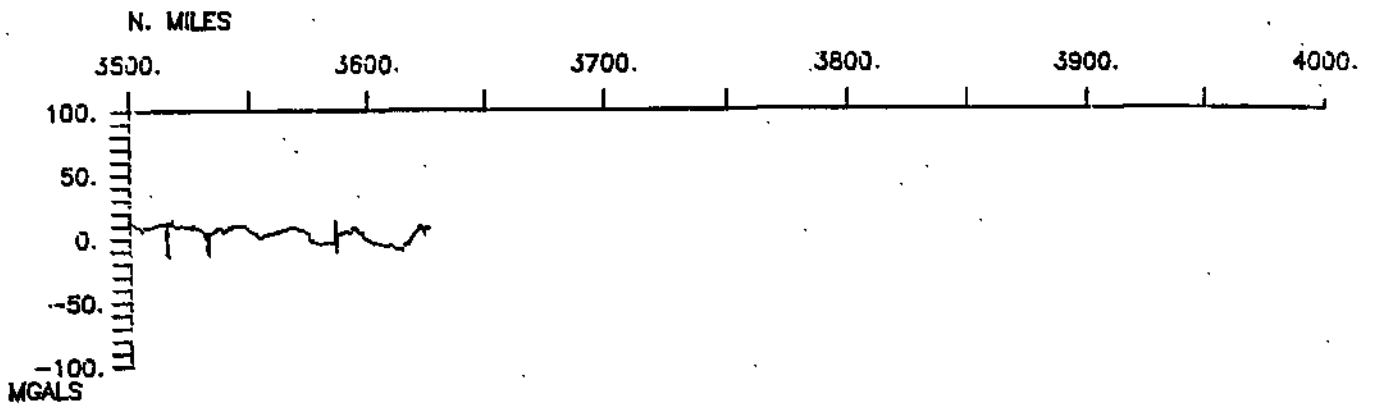


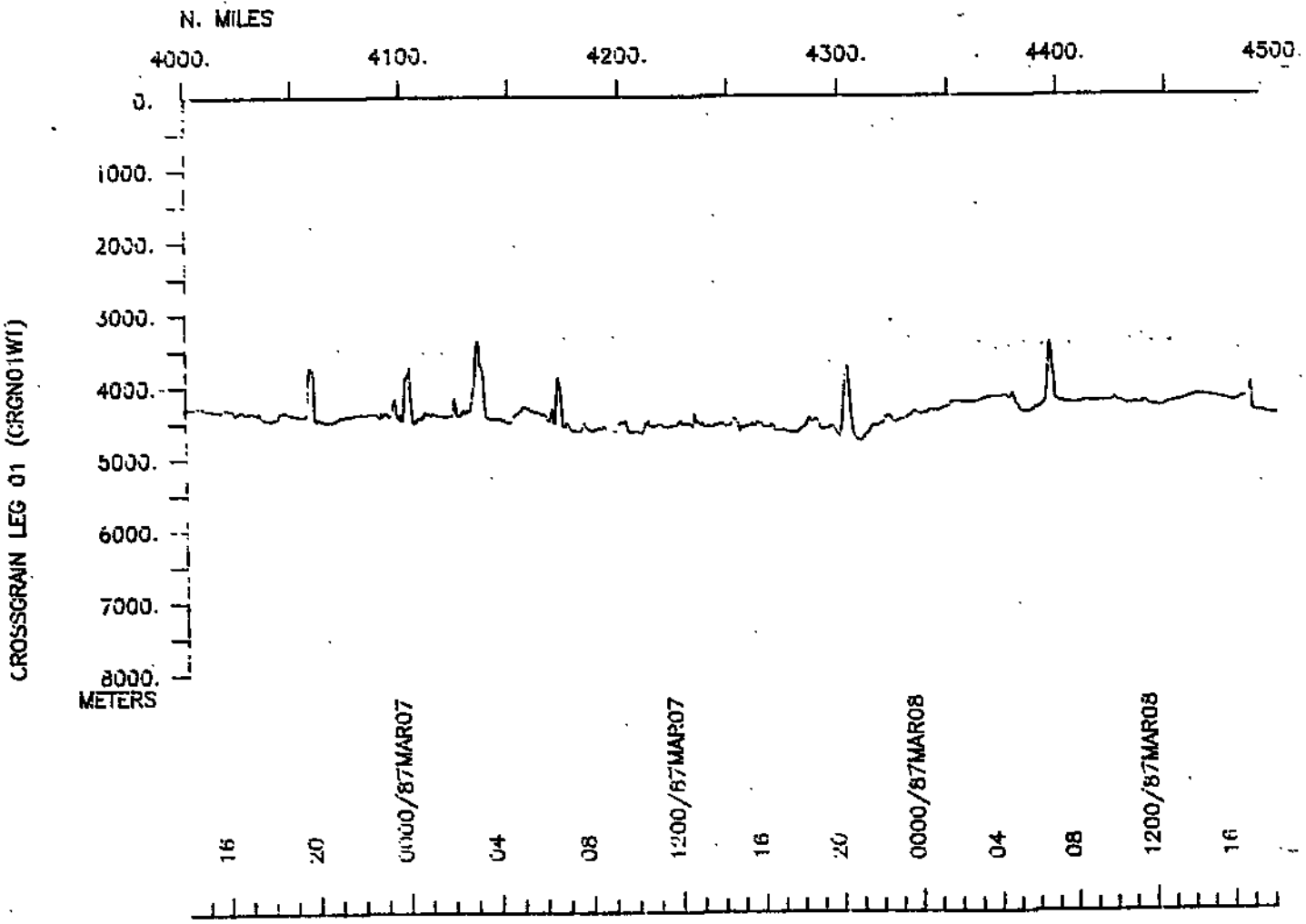
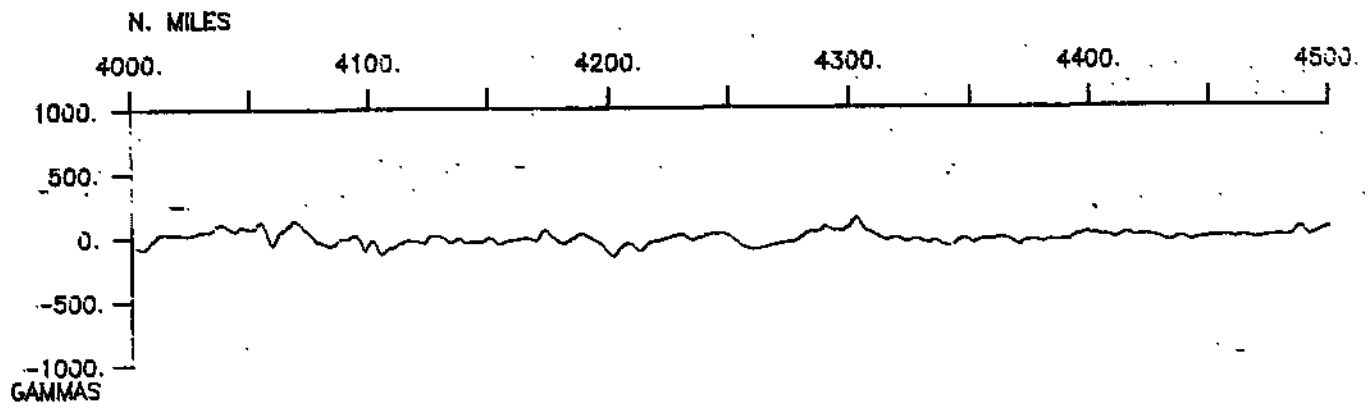
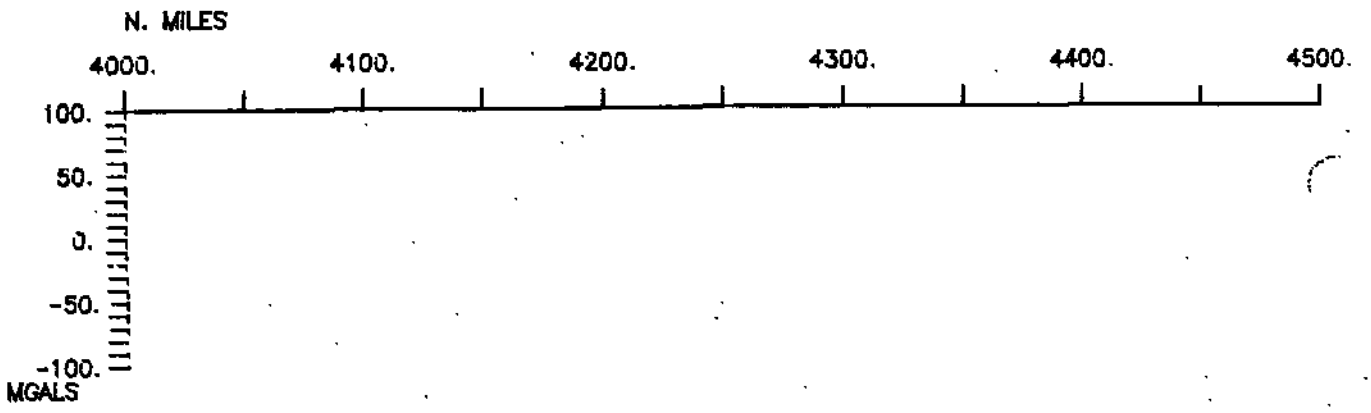


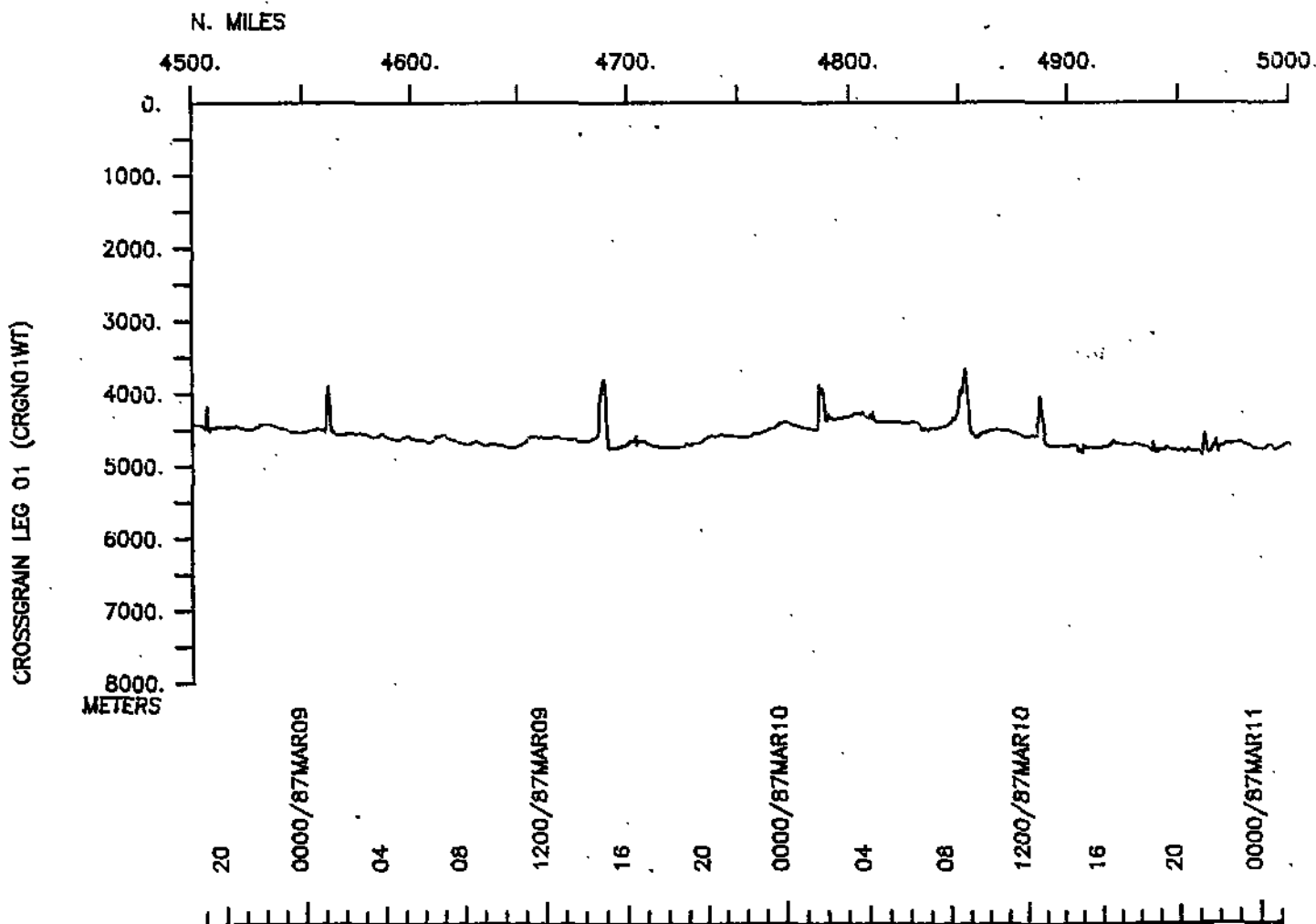
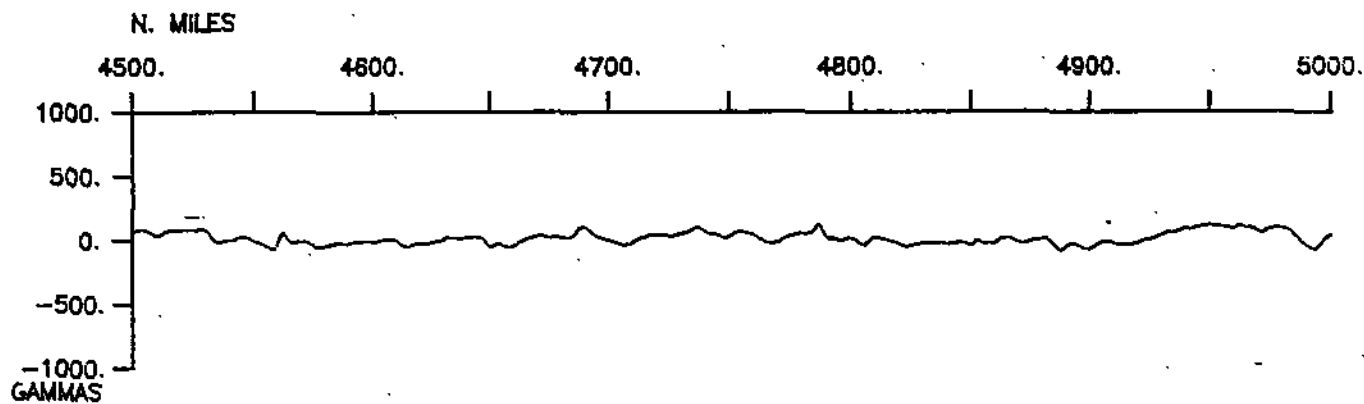
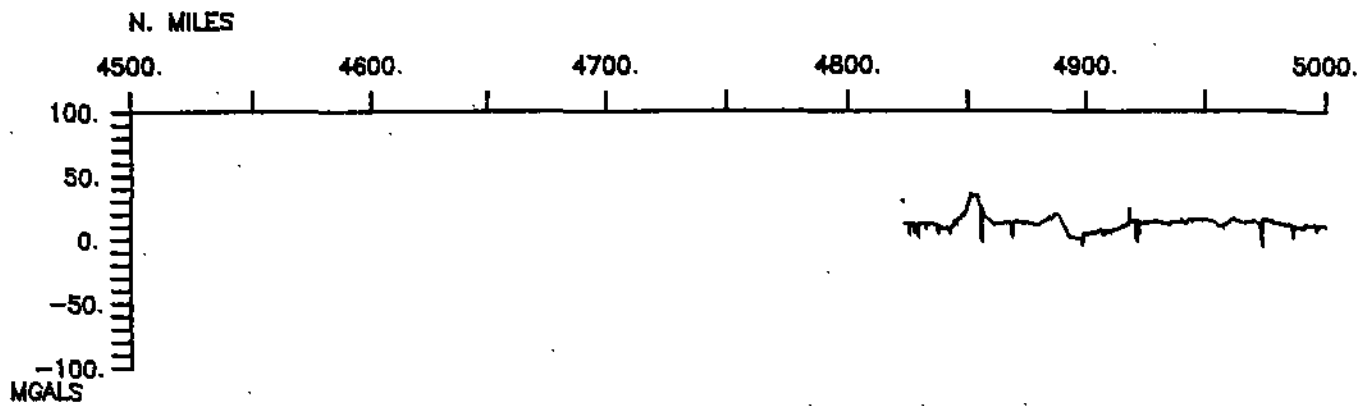


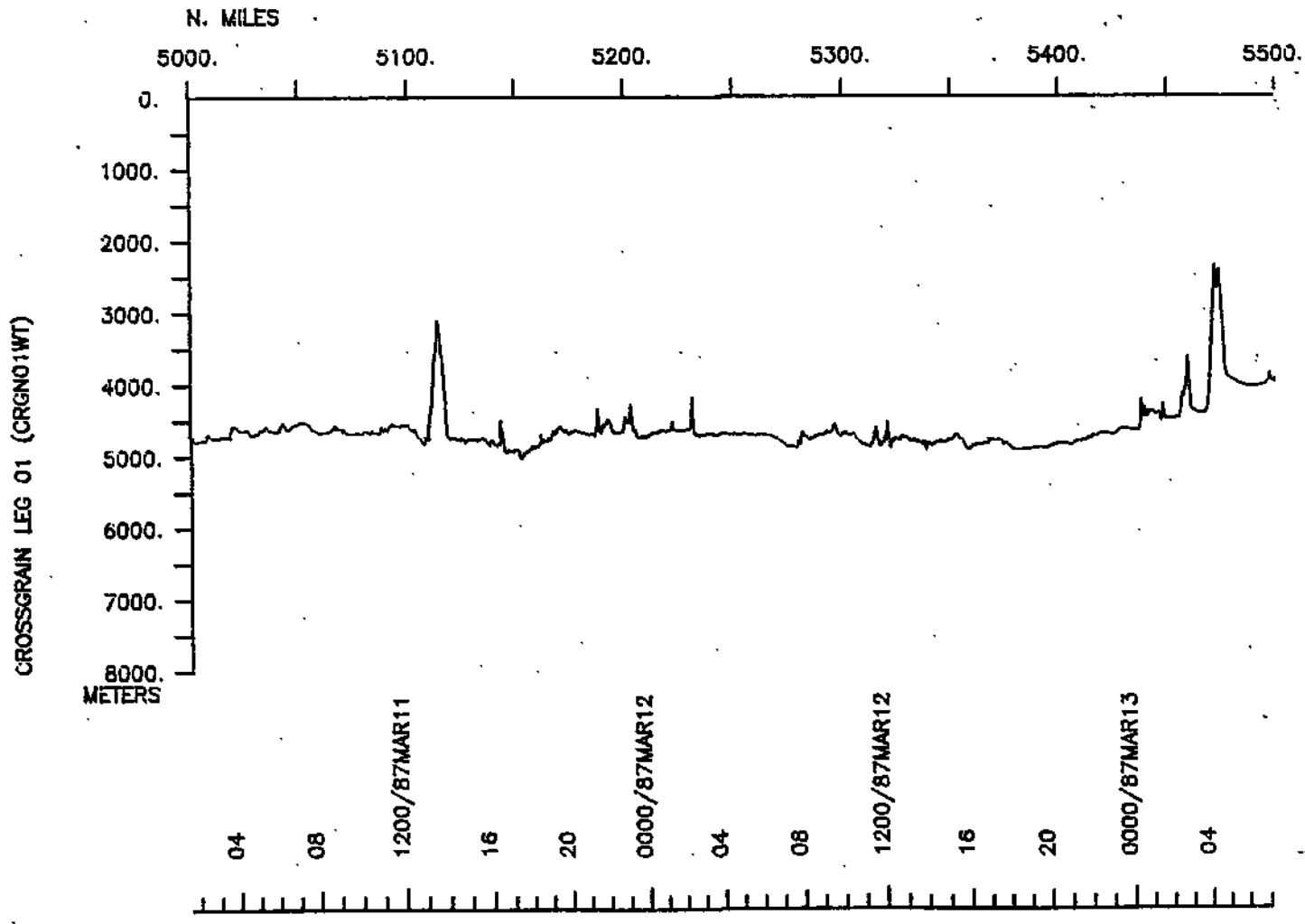
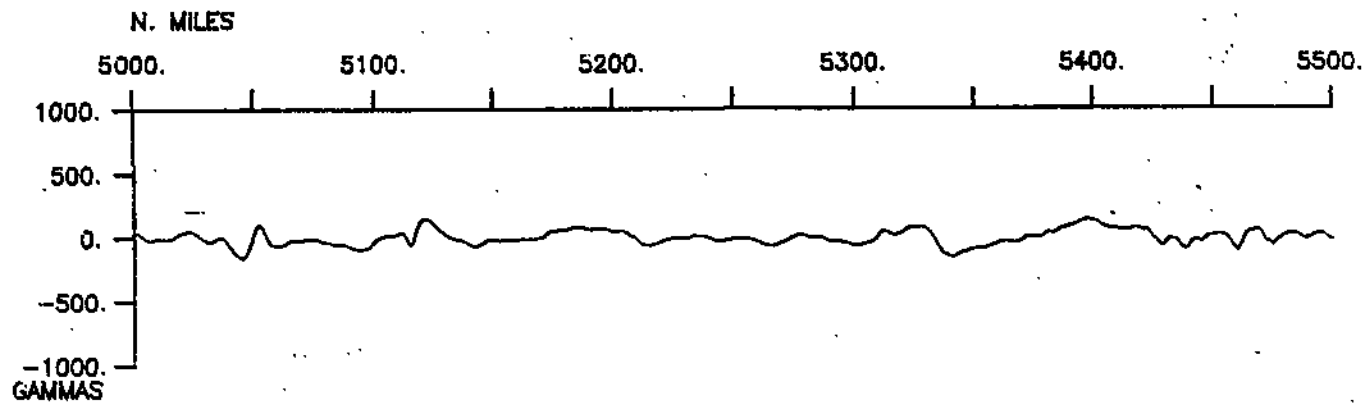
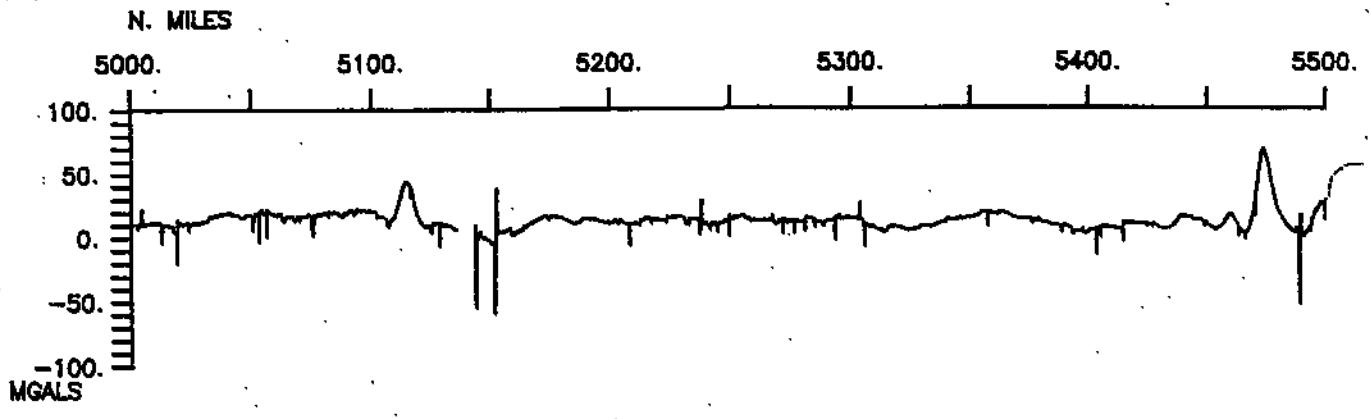


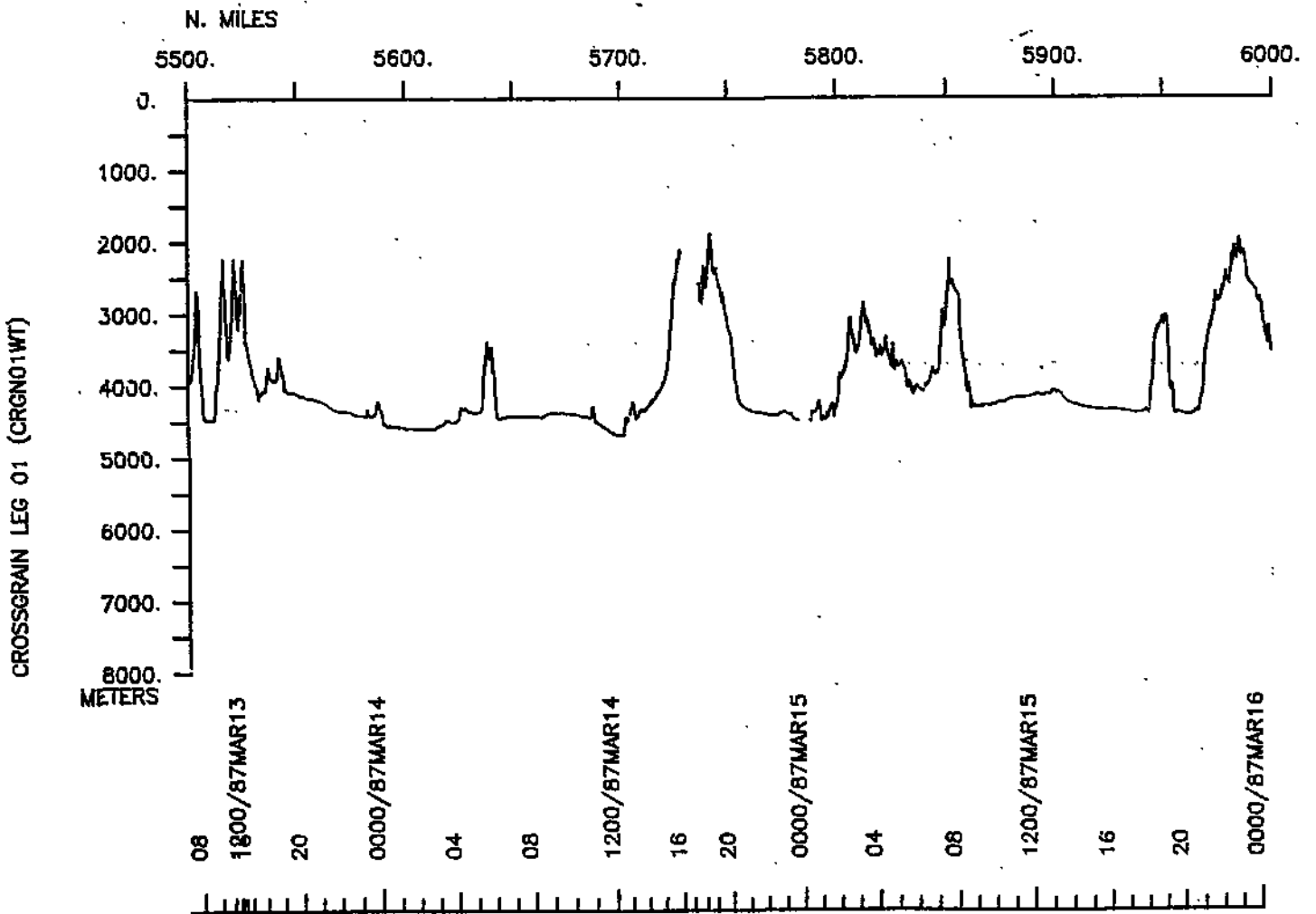
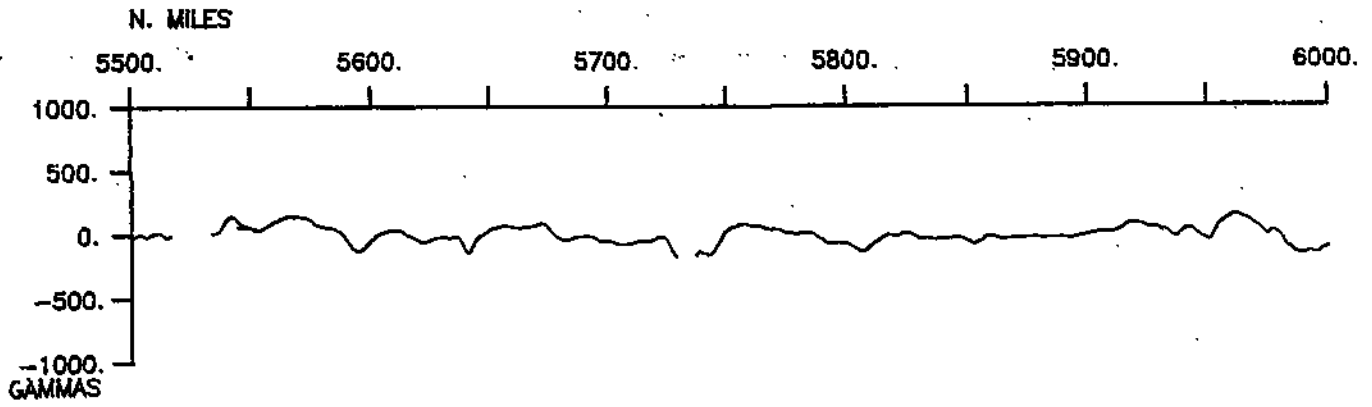
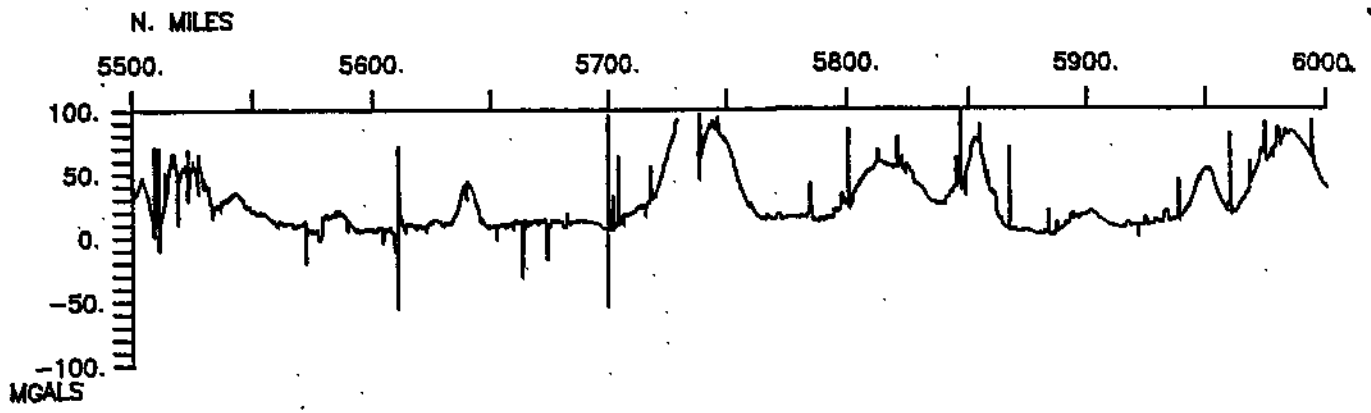


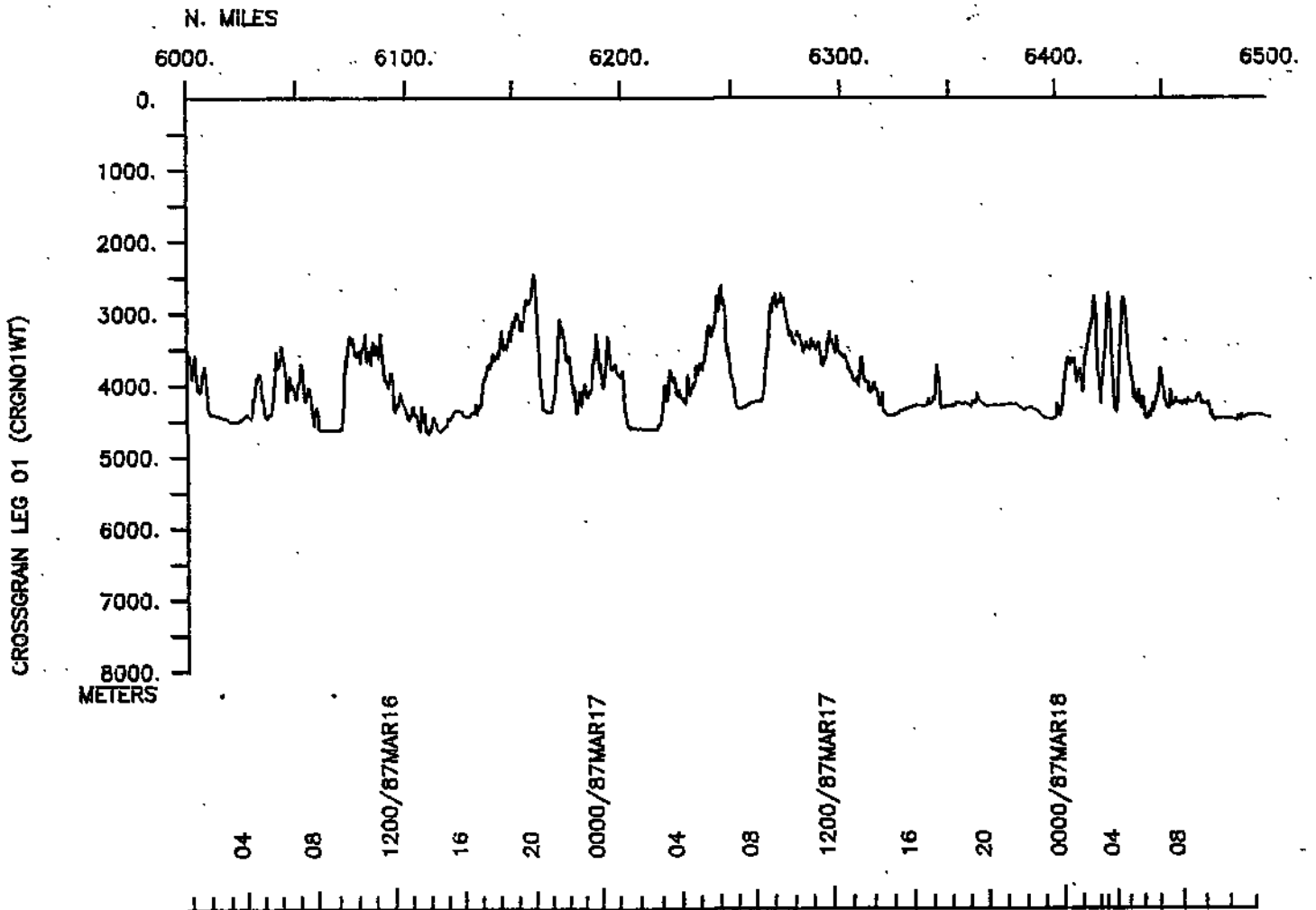
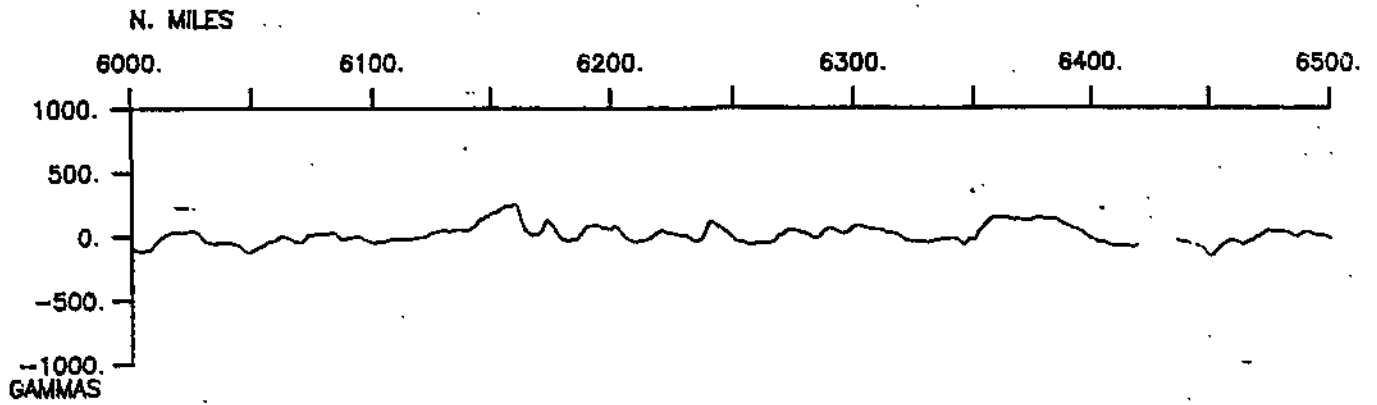
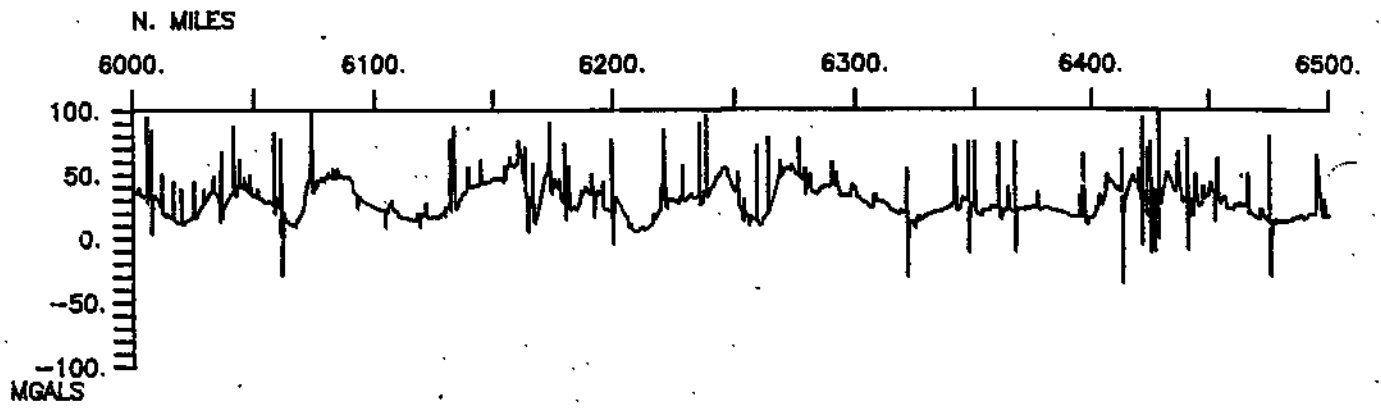


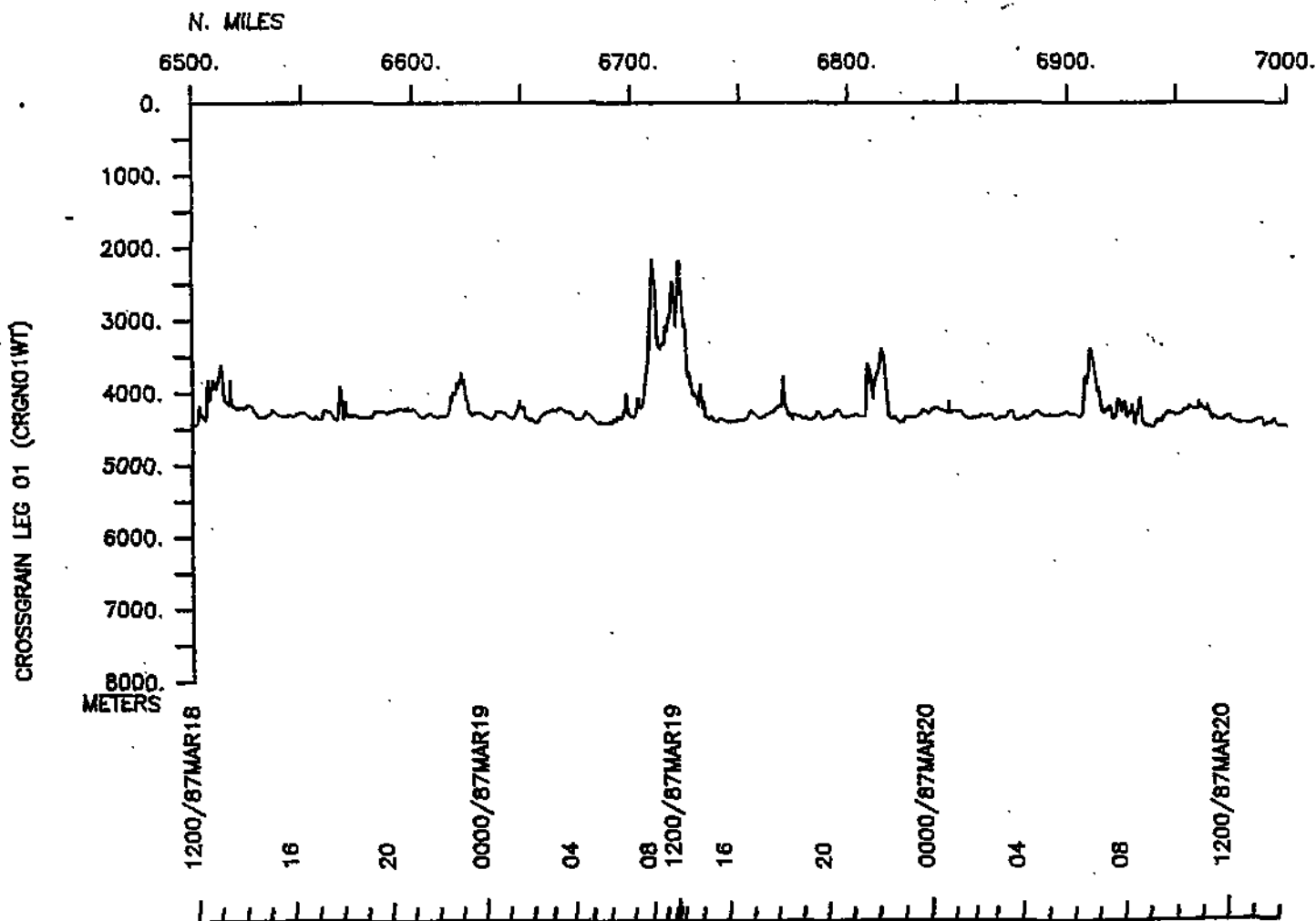
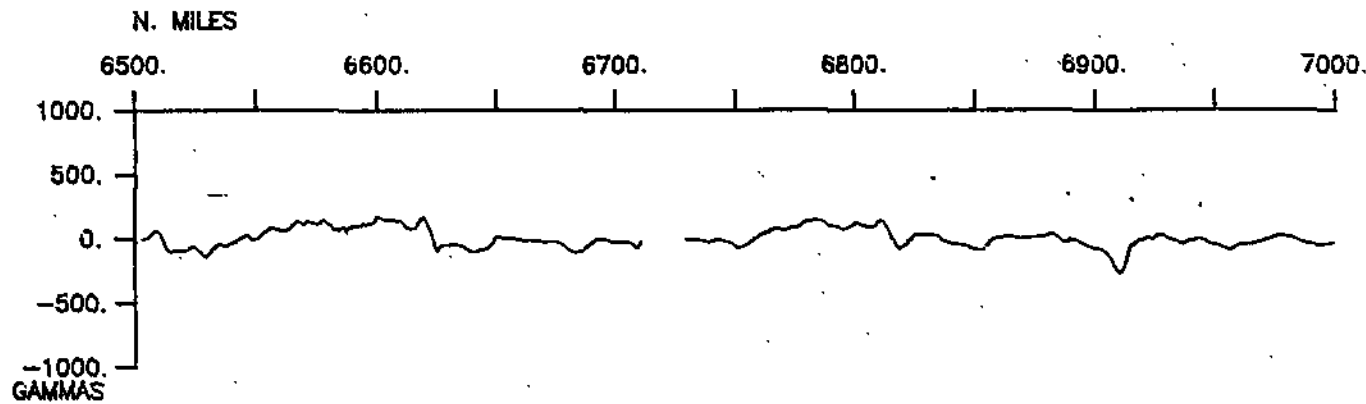
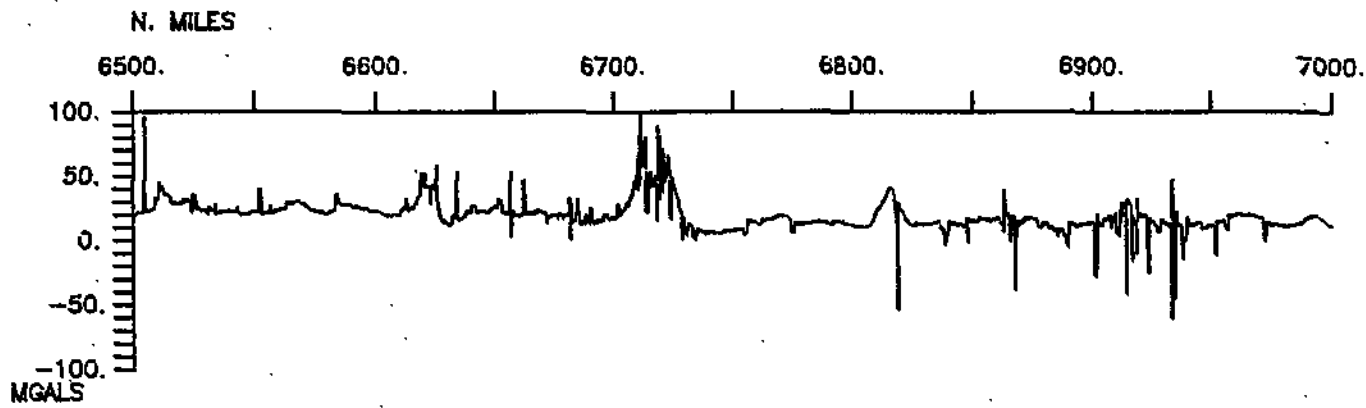


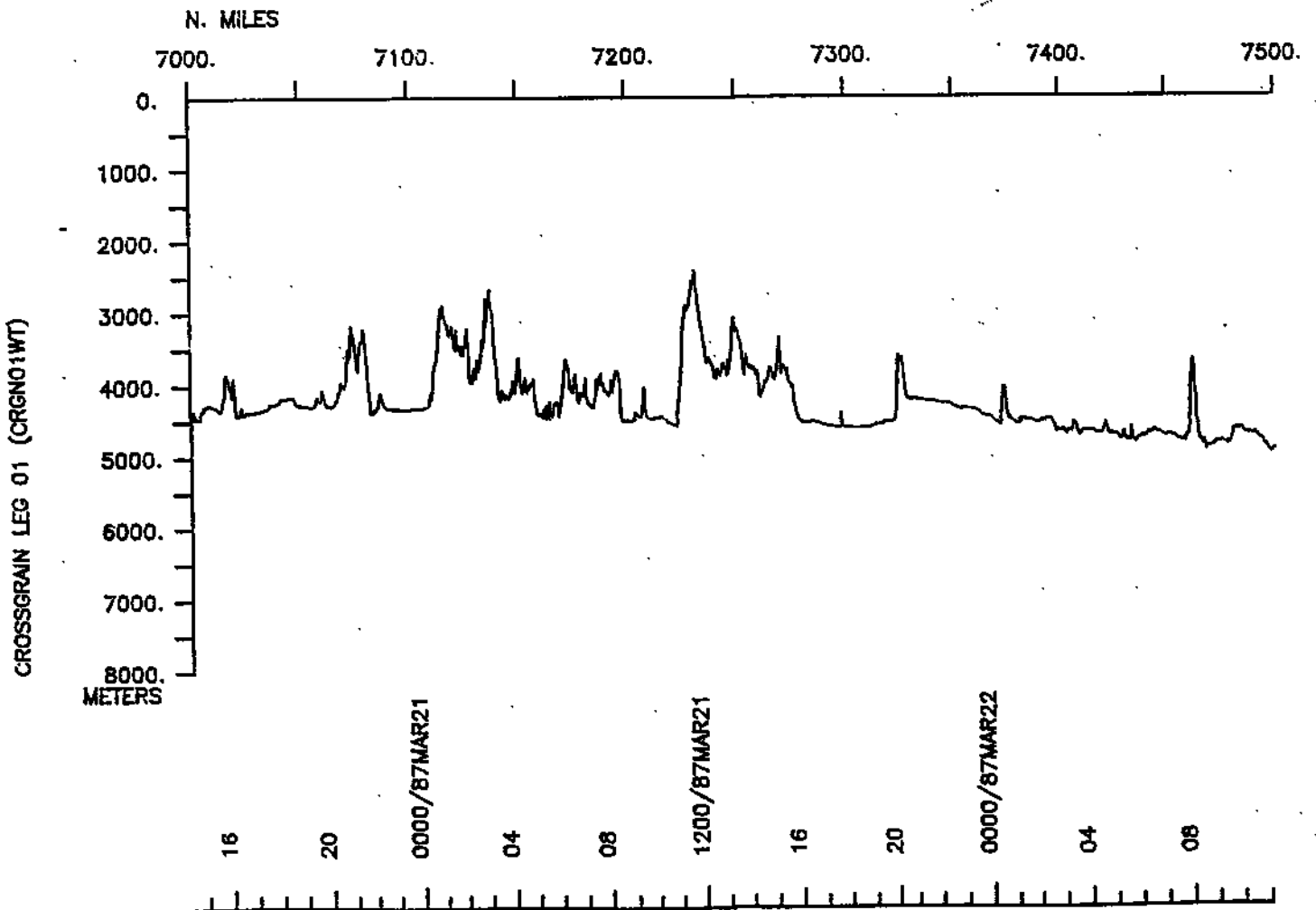
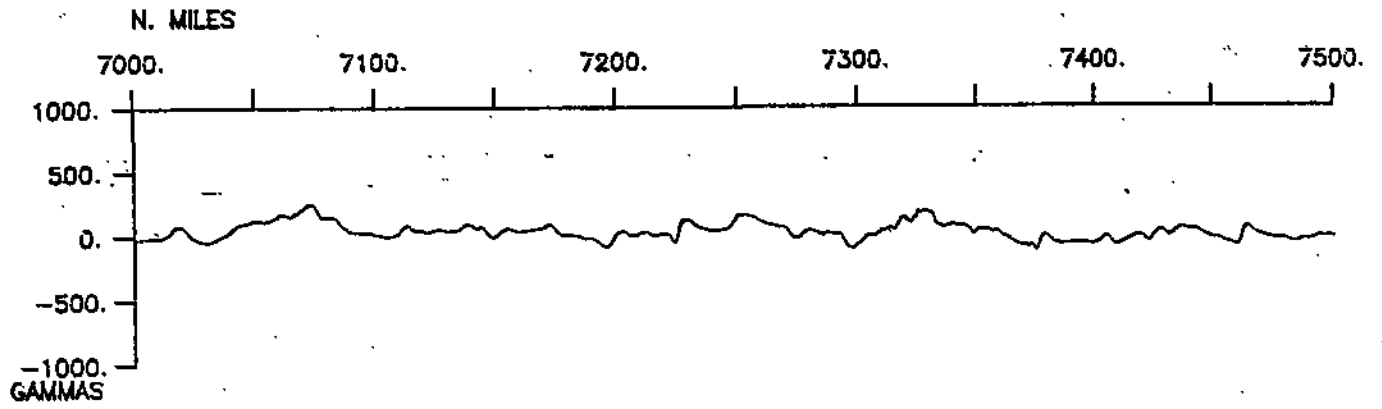
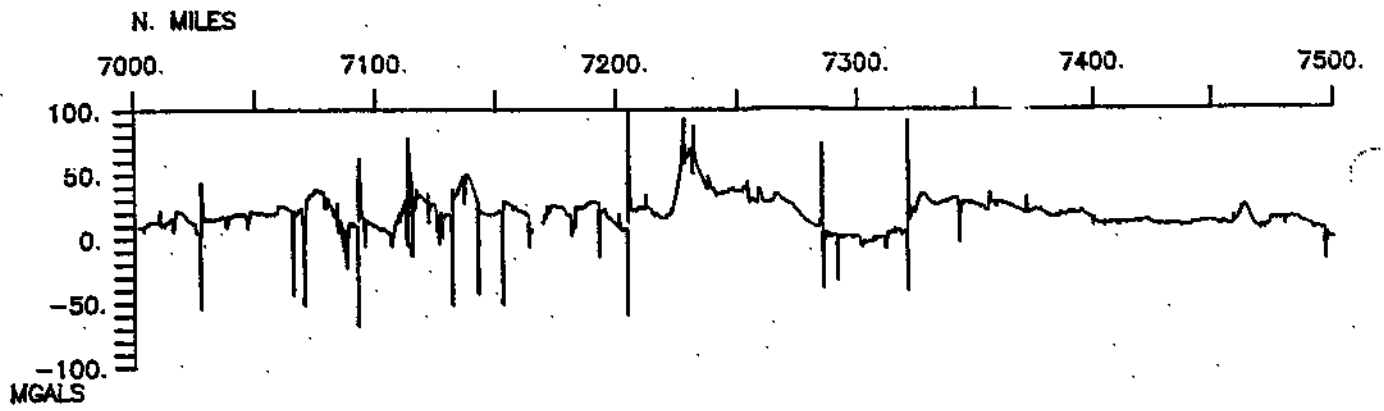


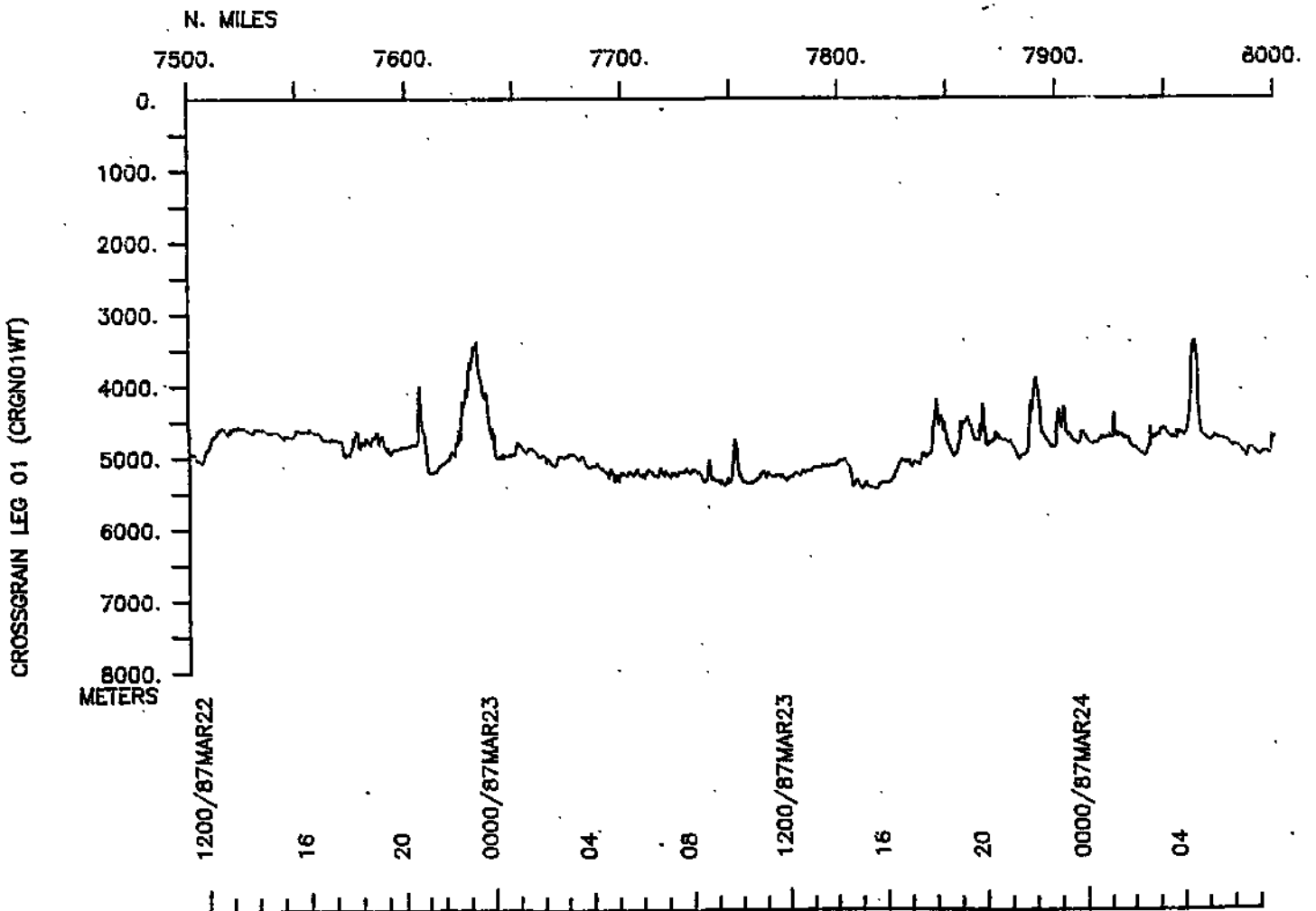
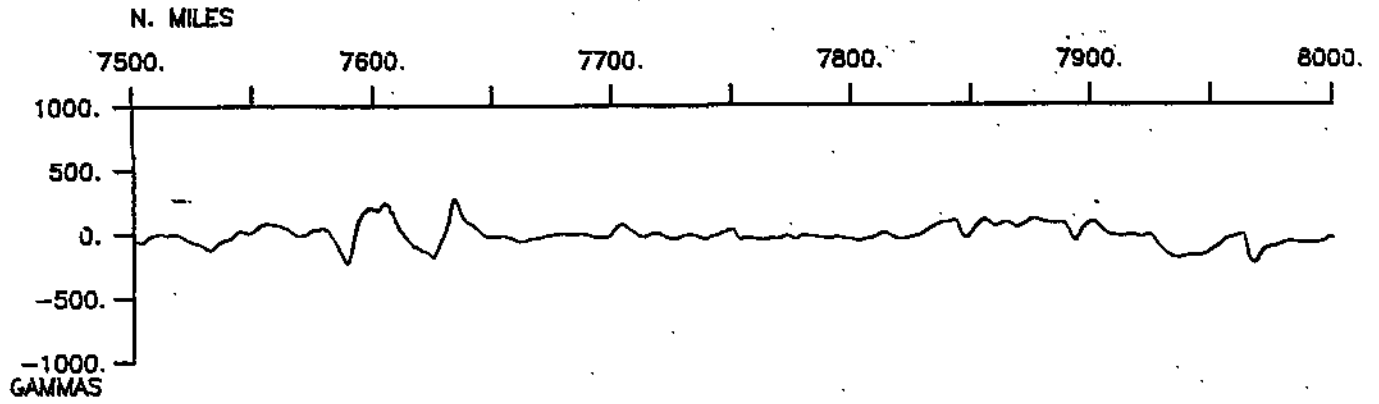
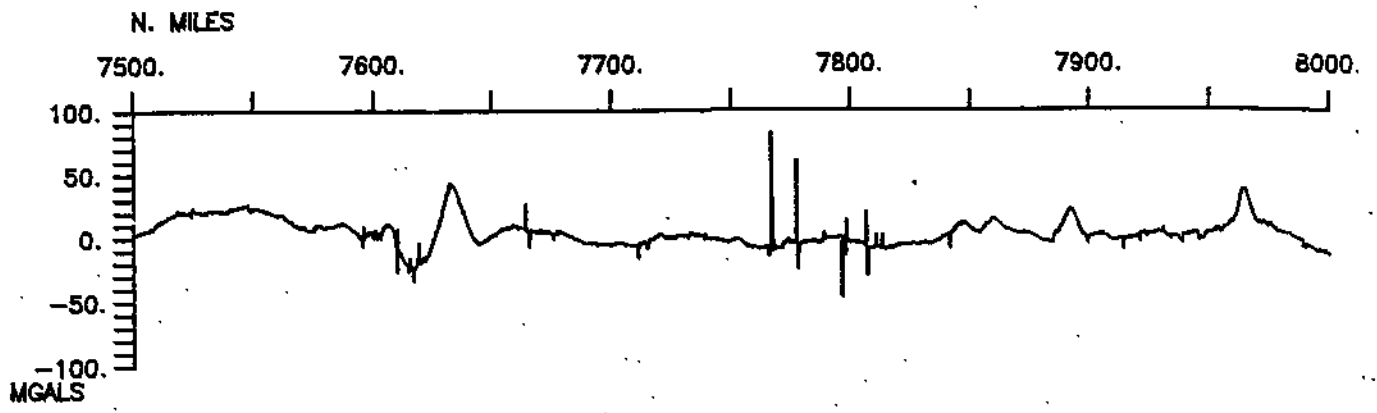




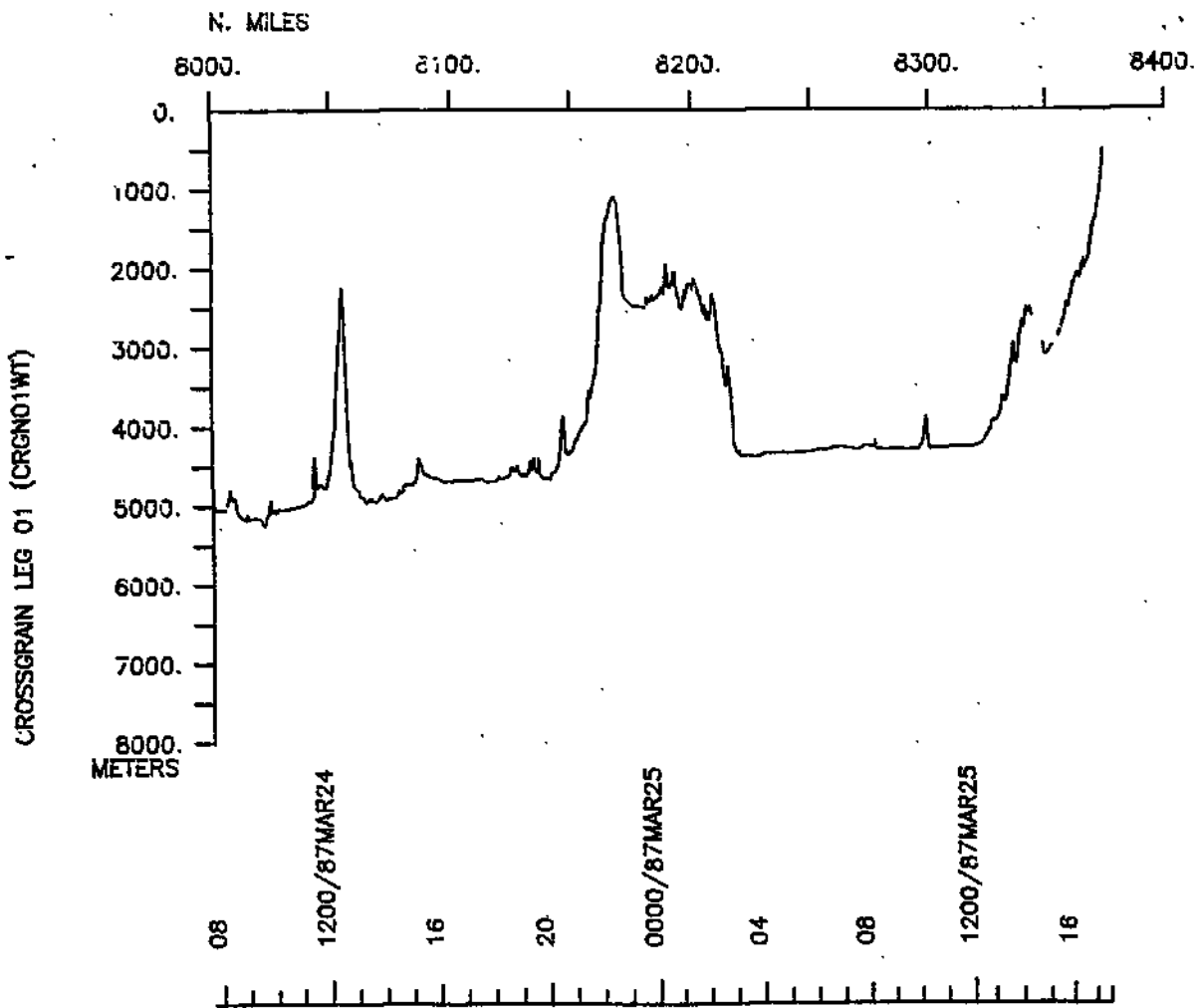
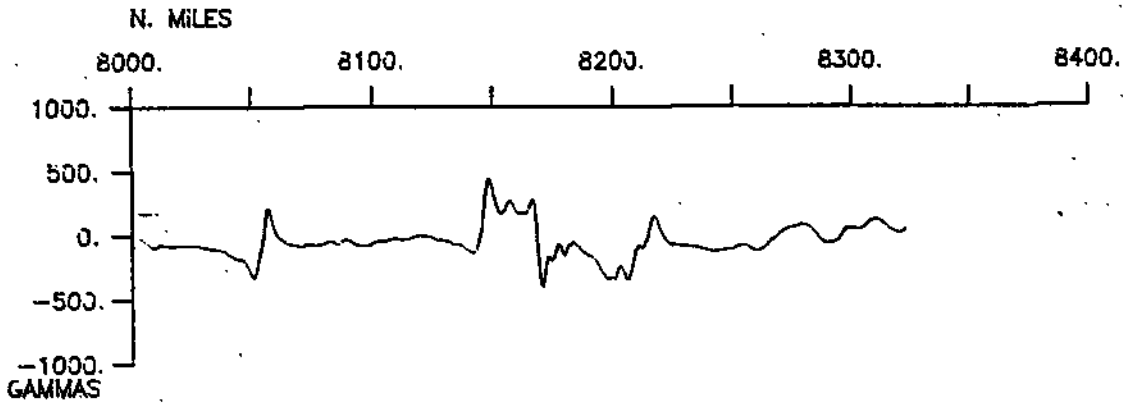
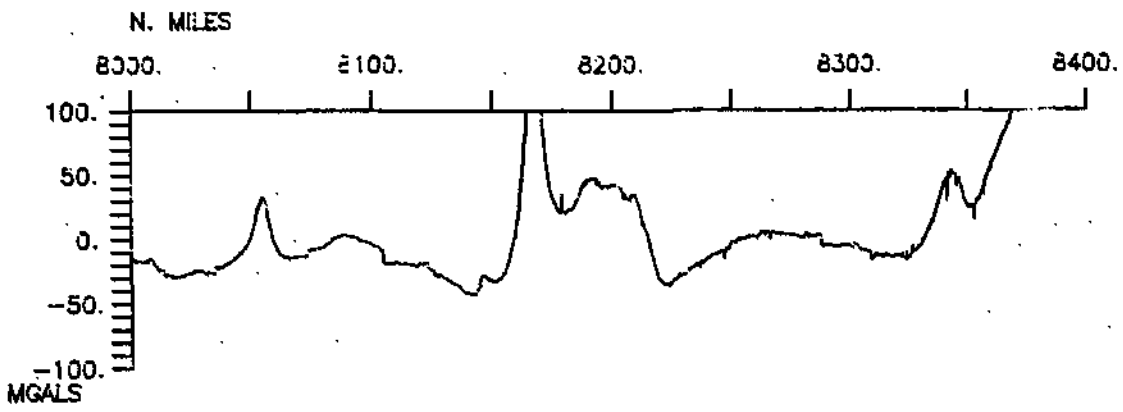








CROSSGRAIN LEG 01 (CRGN01WT)



S.I.O. SAMPLE INDEX

(Issued September 1987)

CROSSGRAIN EXPEDITION

Leg 1

San Diego, Calif. (17 February 1987)
to
Papeete, Tahiti (25 March 1987).

R/V Washington

Chief Scientist - E. L. Winterer

Post-Cruise Processing and Report Preparation
by S.I.O. Geological Data Center

Index Encoding Funded by NSF.
Grant Number OCE86-16368
Index Processing and Report Preparation
funded in part by SIA

The Sample Index is a first level interdisciplinary listing of time, position, sample identification and disposition of all samples, records and measurements collected on this cruise leg. The index data are encoded at sea by the resident marine technician and processed on shore by the S.I.O. Geological Data Center shortly after the completion of the cruise leg.

Positions are interpolated on the basis of sample time by comparison to a single, edited navigation file. Samples beginning at one time and position and ending at another are entered on two consecutive lines. Disposition and sample type are represented by three and four character codes to permit future computer searches on these parameters. (Listings defining these codes are available from the Geological Data Center.)

GDC Cruise I.D. #228

****PORTS****

1600 170287	LGPT B SAN DIEGO, CAL.	32-382N 117-141W	sCRGNO1WT
1800 250387	LGPT E PAPEETE, TAHITI	17-319S 149-339W	sCRGNO1WT

****PERSONNEL****

	NAME	***TITLE***	***AFFILIATION***	**CRID**
PECS GRD	WINTERER, E. L.	CHIEF SCIENTIST	SCRIPPS INSTITUTION	CRGNO1WT
PESP SIX	SANDWELL, D.	PROFESSOR	UNIVERSITY OF TEXAS	CRGNO1WT
PEST GRD	LYNCH, M.	STUDENT	SCRIPPS INSTITUTION	CRGNO1WT
PEVL GRD	HARRISON, K.	VOLUNTEER	SCRIPPS INSTITUTION	CRGNO1WT
PERT STS	BOAZ, J.	RESIDENT TECH	SCRIPPS INSTITUTION	CRGNO1WT
PECT STS	ABBOTT, J.	COMPUTER TECH	SCRIPPS INSTITUTION	CRGNO1WT
PEST GRD	GEE, J.	STUDENT	SCRIPPS INSTITUTION	CRGNO1WT
PEST GRD	WU, G.	STUDENT	SCRIPPS INSTITUTION	CRGNO1WT
PECT GRD	HENKART, P.	COMPUTER TECH	SCRIPPS INSTITUTION	CRGNO1WT
PESP STS	CRAMPTON, P.	AIRGUN TECH	SCRIPPS INSTITUTION	CRGNO1WT
PEBO STS	SMITH, S.	SEABEAM OPERATOR	SCRIPPS INSTITUTION	CRGNO1WT
PEBE STS	PHILLIPS, J.	SEABEAM TECH	SCRIPPS INSTITUTION	CRGNO1WT
PEVL GRD	GRANIRER, J.	VOLUNTEER	SCRIPPS INSTITUTION	CRGNO1WT
PEST GRD	MEAD, G.	STUDENT	SCRIPPS INSTITUTION	CRGNO1WT

****NOTES****

#AN 'X' IN THE (B)EGIN/(E)ND COLUMN FOLLOWING THE SAMPLE CODE INDICATES NO
 #SAMPLE OR DATA RECOVERED. A 'C' INDICATES CONTINUATION OF DATA COLLECTION
 #FROM BEFORE THE BEGINNING OR AFTER THE END OF A PARTICULAR LEG. (MOORED
 #BOTTOM INSTRUMENTS, FOR EXAMPLE.) THE NUMBER APPEARING IN THE COLUMNS
 #BETWEEN THE SAMPLE IDENTIFIER AND THE DISPOSITION CODE, FOR MANY SAMPLE
 #ENTRIES, IS THE WATER DEPTH IN CORRECTED METERS. POSITIONS ARE IN TENTHS
 #OF MINUTES.

#GMT #TIME	DDMMYY DATE	LOC TIME	T Z	SAMP CODE	SAMPLE IDENTIFIER	DISP CODE	LAT.	LONG.	CRUISE LEG-SHIP
---------------	----------------	-------------	--------	--------------	----------------------	--------------	------	-------	--------------------

***UNDERWAY DATA CURATOR - S. M. SMITH EXT. 42752

LOG BOOKS

1910	170287			LBUW B	UNDERWAY WATCH LOG	GDC	32-380N	117-365W	sCRGNO1WT
1730	250387			LBUW E	UNDERWAY WATCH LOG	GDC	17-315S	149-354W	sCRGNO1WT

*** SINGLE SONOBOUY SEISMIC RUN ***

0046	020387			SRSS B	SEIS. RUN CRGNO1-01	GDC	1-405S	137-525W	sCRGNO1WT
0203	020387			SRSS E	UR/AG/SD/AN/DG	GDC	1-314S	138-004W	sCRGNO1WT
0355	020387			SRSS B	SEIS. RUN CRGNO1-02	GDC	1-181S	138-124W	sCRGNO1WT
0436	020387			SRSS E	UR/AG/SD/AN/DG	GDC	1-132S	138-168W	sCRGNO1WT
0949	020387			SRSS B	SEIS. RUN CRGNO1-03	GDC	0-592S	139-165W	sCRGNO1WT
2112	020387			SRSS E	UR/AG/SD/AN/DG	GDC	1-109S	139-170W	sCRGNO1WT
2353	020387			SRSS B	SEIS. RUN CRGNO1-04	GDC	1-348S	139-175W	sCRGNO1WT
0219	030387			SRSS E	UR/AG/SD/AN/DG	GDC	1-567S	139-170W	sCRGNO1WT
0444	040387			SRSS B	SEIS. RUN CRGNO1-05	GDC	0-133S	140-267W	sCRGNO1WT
0624	040387			SRSS E	UR/AG/SD/AN/DG	GDC	0-013N	140-319W	sCRGNO1WT
1850	040387			SRSS B	SEIS. RUN CRGNO1-06	GDC	1-482N	141-160W	sCRGNO1WT
2023	040387			SRSS E	UR/AG/SD/AN/DG	GDC	2-022N	141-209W	sCRGNO1WT
2026	040387			SRSS B	SEIS. RUN CRGNO1-07	GDC	2-027N	141-211W	sCRGNO1WT
2156	040387			SRSS E	UR/AG/SD/AN/DG	GDC	2-163N	141-260W	sCRGNO1WT
2202	040387			SRSS B	SEIS. RUN CRGNO1-08	GDC	2-172N	141-264W	sCRGNO1WT
2248	040387			SRSS E	UR/AG/SD/AN/DG	GDC	2-243N	141-290W	sCRGNO1WT
2300	040387			SRSS B	SEIS. RUN CRGNO1-09	GDC	2-261N	141-296W	sCRGNO1WT
0034	050387			SRSS E	UR/AG/SD/AN/DG	GDC	2-405N	141-348W	sCRGNO1WT
0037	050387			SRSS B	SEIS. RUN CRGNO1-10	GDC	2-410N	141-350W	sCRGNO1WT
0216	050387			SRSS E	UR/AG/SD/AN/DG	GDC	2-553N	141-409W	sCRGNO1WT
1821	050387			SRSS B	SEIS. RUN CRGNO1-11	GDC	3-455N	142-353W	sCRGNO1WT
1958	050387			SRSS E	UR/AG/SD/AN/DG	GDC	3-318N	142-416W	sCRGNO1WT
2002	050387			SRSS B	SEIS. RUN CRGNO1-12	GDC	3-312N	142-418W	sCRGNO1WT
2135	050387			SRSS E	UR/AG/SD/AN/DG	GDC	3-180N	142-477W	sCRGNO1WT

#GMT #TIME	DDMMYY DATE	LOC T TIME Z	SAMP CODE	SAMPLE IDENTIFIER	DISP CODE	LAT.	LONG.	CRUISE LEG-SHIP
2114	060387		SRSS B	SEIS. RUN CRGN01-13	GDC	0-201S	144-051W	sCRGN01WT
2244	060387		SRSS E	UR/AG/SD/AN/DG	GDC	0-349S	144-099W	sCRGN01WT
2252	060387		SRSS B	SEIS. RUN CRGN01-14	GDC	0-362S	144-104W	sCRGN01WT
0022	070387		SRSS E	UR/AG/SD/AN/DG	GDC	0-507S	144-154W	sCRGN01WT
1743	070387		SRSS B	SEIS. RUN CRGN01-15	GDC	2-276S	145-174W	sCRGN01WT
1858	070387		SRSS E	UR/AG/SD/AN/DG	GDC	2-173S	145-207W	sCRGN01WT
1900	070387		SRSS B	SEIS. RUN CRGN01-16	GDC	2-170S	145-208W	sCRGN01WT
2036	070387		SRSS E	UR/AG/SD/AN/DG	GDC	2-034S	145-244W	sCRGN01WT
1755	080387		SRSS B	SEIS. RUN CRGN01-17	GDC	0-552N	146-312W	sCRGN01WT
1930	080387		SRSS E	UR/AG/SD/AN/DG	GDC	1-087N	146-360W	sCRGN01WT
1936	080387		SRSS B	SEIS. RUN CRGN01-18	GDC	1-096N	146-363W	sCRGN01WT
2116	080387		SRSS E	UR/AG/SD/AN/DG	GDC	1-238N	146-413W	sCRGN01WT
2121	080387		SRSS B	SEIS. RUN CRGN01-19	GDC	1-245N	146-416W	sCRGN01WT
2255	080387		SRSS E	UR/AG/SD/AN/DG	GDC	1-376N	146-471W	sCRGN01WT
2258	080387		SRSS B	SEIS. RUN CRGN01-20	GDC	1-380N	146-473W	sCRGN01WT
0035	090387		SRSS E	UR/AG/SD/AN/DG	GDC	1-517N	146-527W	sCRGN01WT
0038	090387		SRSS B	SEIS. RUN CRGN01-21	GDC	1-521N	146-529W	sCRGN01WT
0133	090387		SRSS E	UR/AG/SD/AN/DG	GDC	1-599N	146-557W	sCRGN01WT
0135	090387		SRSS B	SEIS. RUN CRGN01-22	GDC	2-002N	146-558W	sCRGN01WT
0303	090387		SRSS E	UR/AG/SD/AN/DG	GDC	2-129N	147-001W	sCRGN01WT
1823	090387		SRSS B	SEIS. RUN CRGN01-23	GDC	1-372N	147-566W	sCRGN01WT
2006	090387		SRSS E	UR/WG/SD/AN/DG	GDC	1-230N	148-021W	sCRGN01WT
2008	090387		SRSS B	SEIS. RUN CRGN01-24	GDC	1-228N	148-022W	sCRGN01WT
2134	090387		SRSS E	UR/WG/SD/AN/DG	GDC	1-109N	148-063W	sCRGN01WT
2137	090387		SRSS B	SEIS. RUN CRGN01-25	GDC	1-105N	148-065W	sCRGN01WT
2258	090387		SRSS E	UR/WG/SD/AN/DG	GDC	0-592N	148-105W	sCRGN01WT
2303	090387		SRSS B	SEIS. RUN CRGN01-26	GDC	0-585N	148-107W	sCRGN01WT
0045	100387		SRSS E	UR/WG/SD/AN/DG	GDC	0-443N	148-170W	sCRGN01WT
1759	100387		SRSS B	SEIS. RUN CRGN01-27	GDC	1-373S	149-166W	sCRGN01WT
1930	100387		SRSS E	UR/WG/SD/AN/DG	GDC	1-491S	149-225W	sCRGN01WT
1948	100387		SRSS B	SEIS. RUN CRGN01-28	GDC	1-514S	149-235W	sCRGN01WT
2115	100387		SRSS E	UR/WG/SD/AN/DG	GDC	2-034S	149-282W	sCRGN01WT

#GMT #TIME	DDMMYY DATE	LOC T TIME Z	SAMP CODE	SAMPLE IDENTIFIER	DISP CODE	LAT.	LONG.	CRUISE LEG-SHIP
2022	170387		SRSS B	SEIS. RUN CRGN01-29	GDC	0-559S	144-501W	sCRGN01WT
2145	170387		SRSS E	UR/WG/SD/AN/DG	GDC	1-069S	144-445W	sCRGN01WT
2240	170387		SRSS B	SEIS. RUN CRGN01-30	GDC	1-142S	144-409W	sCRGN01WT
2308	170387		SRSS E	UR/WG/SD/AN/DG	GDC	1-180S	144-392W	sCRGN01WT
0102	200387		SRSS B	SEIS. RUN CRGN01-31	GDC	1-403S	142-117W	sCRGN01WT
0229	200387		SRSS E	UR/WG/SD/AN/DG	GDC	1-398S	142-246W	sCRGN01WT
*** SEABEAM SWATH BOOKS ***								
1941	170287		MBSB B	SB SWATH BOOK 01	GDC	32-383N	117-343W	sCRGN01WT
1959	180287		MBSB E	SB SWATH BOOK 01	GDC	29-410N	120-463W	sCRGN01WT
1959	180287		MBSB B	SB SWATH BOOK 02	GDC	29-410N	120-463W	sCRGN01WT
637	200287		MBSB E	SB SWATH BOOK 02	GDC	22-417N	125-571W	sCRGN01WT
1637	200287		MBSB B	SB SWATH BOOK 03	GDC	22-417N	125-571W	sCRGN01WT
0706	220287		MBSB E	SB SWATH BOOK 03	GDC	15-532N	128-575W	sCRGN01WT
0706	220287		MBSB B	SB SWATH BOOK 04	GDC	15-532N	128-575W	sCRGN01WT
0352	240287		MBSB E	SB SWATH BOOK 04	GDC	8-044N	132-034W	sCRGN01WT
0352	240287		MBSB B	SB SWATH BOOK 05	GDC	8-044N	132-034W	sCRGN01WT
1355	260287		MBSB E	SB SWATH BOOK 05	GDC	0-090S	134-482W	sCRGN01WT
1355	260287		MBSB B	SB SWATH BOOK 06	GDC	0-090S	134-482W	sCRGN01WT
0018	010387		MBSB E	SB SWATH BOOK 06	GDC	2-013S	136-534W	sCRGN01WT
0018	010387		MBSB B	SB SWATH BOOK 07	GDC	2-013S	136-534W	sCRGN01WT
0451	030387		MBSB E	SB SWATH BOOK 07	GDC	2-195S	139-151W	sCRGN01WT
0451	030387		MBSB B	SB SWATH BOOK 08	GDC	2-195S	139-151W	sCRGN01WT
0910	050387		MBSB E	SB SWATH BOOK 08	GDC	3-539N	142-058W	sCRGN01WT
0917	050387		MBSB B	SB SWATH BOOK 09	GDC	3-549N	142-062W	sCRGN01WT
1035	070387		MBSB E	SB SWATH BOOK 09	GDC	2-310S	144-506W	sCRGN01WT
1039	070387		MBSB B	SB SWATH BOOK 10	GDC	2-316S	144-509W	sCRGN01WT
1620	090387		MBSB E	SB SWATH BOOK 10	GDC	1-545N	147-494W	sCRGN01WT
1623	090387		MBSB B	SB SWATH BOOK 11	GDC	1-541N	147-496W	sCRGN01WT
2226	110387		MBSB E	SB SWATH BOOK 11	GDC	4-163S	150-534W	sCRGN01WT
2226	110387		MBSB B	SB SWATH BOOK 12	GDC	4-163S	150-534W	sCRGN01WT
0826	140387		MBSB E	SB SWATH BOOK 12	GDC	1-198N	153-357W	sCRGN01WT

#GMT #TIME	DDMMYY DATE	LOC TIME	T Z	SAMP CODE	SAMPLE IDENTIFIER	DISP CODE	LAT.	LONG.	CRUISE LEG-SHIP
0826	140387			MBSB B	SB SWATH BOOK 13	GDC	1-198N	153-357W	sCRGN01WT
1903	160387			MBSB E	SB SWATH BOOK 13	GDC	0-260S	147-423W	sCRGN01WT
1903	160387			MBSB B	SB SWATH BOOK 14	GDC	0-260S	147-423W	sCRGN01WT
0324	190387			MBSB E	SB SWATH BOOK 14	GDC	1-471S	140-488W	sCRGN01WT
0324	190387			MBSB B	SB SWATH BOOK 15	GDC	1-471S	140-488W	sCRGN01WT
0317	210387			MBSB E	SB SWATH BOOK 15	GDC	0-382S	146-356W	sCRGN01WT
0317	210387			MBSB B	SB SWATH BOOK 16	GDC	0-382S	146-356W	sCRGN01WT
2230	220387			MBSB E	SB SWATH BOOK 16	GDC	5-317S	147-465W	sCRGN01WT
2230	220387			MBSB B	SB SWATH BOOK 17	GDC	5-317S	147-465W	sCRGN01WT
1740	240387			MBSB E	SB SWATH BOOK 17	GDC	13-150S	148-573W	sCRGN01WT
1740	240387			MBSB B	SB SWATH BOOK 18	GDC	13-150S	148-573W	sCRGN01WT
1734	250387			MBSB E	SB SWATH BOOK 18	GDC	17-317S	149-352W	sCRGN01WT
*** SEABEAM 12KHZ UGR MONITOR RECORDS ***									
1940	170287			MBRM B	SB MONITOR R-01	GDC	32-383N	117-345W	sCRGN01WT
1634	210287			MBRM E	SB MONITOR R-01	GDC	18-267N	127-503W	sCRGN01WT
1644	210287			MBRM B	SB MONITOR R-02	GDC	18-248N	127-509W	sCRGN01WT
1239	250287			MBRM E	SB MONITOR R-02	GDC	3-308N	133-550W	sCRGN01WT
1245	250287			MBRM B	SB MONITOR R-03	GDC	3-299N	133-553W	sCRGN01WT
0355	010387			MBRM E	SB MONITOR R-03	GDC	1-453S	137-253W	sCRGN01WT
0400	010387			MBRM B	SB MONITOR R-04	GDC	1-449S	137-260W	sCRGN01WT
1837	040387			MBRM E	SB MONITOR R-04	GDC	1-463N	141-153W	sCRGN01WT
1840	040387			MBRM B	SB MONITOR R-05	GDC	1-468N	141-155W	sCRGN01WT
0508	080387			MBRM E	SB MONITOR R-05	GDC	0-514S	145-488W	sCRGN01WT
0515	080387			MBRM B	SB MONITOR R-06	GDC	0-505S	145-492W	sCRGN01WT
0045	120387			MBRM E	SB MONITOR R-06	GDC	3-567S	150-590W	sCRGN01WT
0052	120387			MBRM B	SB MONITOR R-07	GDC	3-557S	150-593W	sCRGN01WT
1930	150387			MBRM E	SB MONITOR R-07	GDC	0-014S	150-244W	sCRGN01WT
1940	150387			MBRM B	SB MONITOR R-08	GDC	0-011S	150-230W	sCRGN01WT
1425	190387			MBRM E	SB MONITOR R-08	GDC	1-484S	140-107W	sCRGN01WT
1434	190387			MBRM B	SB MONITOR R-09	GDC	1-483S	140-118W	sCRGN01WT
0656	230387			MBRM E	SB MONITOR R-09	GDC	7-051S	148-116W	sCRGN01WT
0700	230387			MBRM B	SB MONITOR R-10	GDC	7-058S	148-118W	sCRGN01WT
1734	250387			MBRM E	SB MONITOR R-10	GDC	17-317S	149-352W	sCRGN01WT

#GMT #TIME	DDMMYY DATE	LOC TIME	T Z	SAMP CODE	SAMPLE IDENTIFIER	DISP CODE	LAT.	LONG.	CRUISE LEG-SHIP		
*** SEISMIC REFLECTION RECORDS ***											
2308 0909	170287 230287			SPRS SPRS	B WATERGUN E WATERGUN	SLOW SLOW	R-01 R-01	GDC GDC	32-348N 11-185N	117-536W 130-456W	sCRGN01WT sCRGN01WT
0914 1816	230287 020387			SPRS SPRS	B WATERGUN E WATERGUN	SLOW SLOW	R-02 R-02	GDC GDC	11-175N 0-452S	130-459W 139-157W	sCRGN01WT sCRGN01WT
1819 0300	020387 060387			SPRS SPRS	B WATERGUN E WATERGUN	SLOW SLOW	R-03 R-03	GDC GDC	0-457S 2-282N	139-157W 143-057W	sCRGN01WT sCRGN01WT
0311 0525	060387 110387			SPRS SPRS	B WATERGUN E WATERGUN	SLOW SLOW	R-04 R-04	GDC GDC	2-266N 3-127S	143-063W 149-564W	sCRGN01WT sCRGN01WT
0531 0913	110387 130387			SPRS SPRS	B WATERGUN E WATERGUN	SLOW SLOW	R-05 R-05	GDC GDC	3-135S 0-105N	149-567W 152-128W	sCRGN01WT sCRGN01WT
0746 0915	130387 170387			SPRS SPRS	B WATERGUN E WATERGUN	SLOW SLOW	R-06 R-06	GDC GDC	0-165N 0-407S	152-158W 146-077W	sCRGN01WT sCRGN01WT
0925 1330	170387 240387			SPRS SPRS	B WATERGUN E WATERGUN	SLOW SLOW	R-07 R-07	GDC GDC	0-407S 12-283S	146-061W 148-511W	sCRGN01WT sCRGN01WT
1332 1221	240387 250387			SPRS SPRS	B WATERGUN E WATERGUN	SLOW SLOW	R-08 R-08	GDC GDC	12-287S 16-423S	148-511W 149-256W	sCRGN01WT sCRGN01WT
2300 1808	170287 210287			SPRS SPRS	B WATERGUN E WATERGUN	FAST FAST	R-01 R-01	GDC GDC	32-347N 18-090N	117-531W 127-563W	sCRGN01WT sCRGN01WT
1811 0209	210287 010387			SPRF SPRF	B WATERGUN E WATERGUN	FAST FAST	R-02 R-02	GDC GDC	18-084N 1-533S	127-565W 137-097W	sCRGN01WT sCRGN01WT
0212 0126	010387 080387			SPRF SPRF	B WATERGUN E WATERGUN	FAST FAST	R-03 R-03	GDC GDC	1-530S 1-222S	137-101W 145-371W	sCRGN01WT sCRGN01WT
0129 0802	080387 150387			SPRF SPRF	B WATERGUN E WATERGUN	FAST FAST	R-04 R-04	GDC GDC	1-218S 0-087N	145-373W 152-021W	sCRGN01WT sCRGN01WT
0805 1202	150387 220387			SPRF SPRF	B WATERGUN E WATERGUN	FAST FAST	R-05 R-05	GDC GDC	0-085N 3-423S	152-017W 147-140W	sCRGN01WT sCRGN01WT
1206 1221	220387 250387			SPRF SPRF	B WATERGUN E WATERGUN	FAST FAST	R-06 R-06	GDC GDC	3-431S 16-423S	147-142W 149-256W	sCRGN01WT sCRGN01WT

#GMT #TIME	DDMMYY DATE	LOC TIME	T Z	SAMP CODE	SAMPLE IDENTIFIER	DISP CODE	LAT.	LONG.	CRUISE LEG-SHIP
---------------	----------------	-------------	--------	--------------	----------------------	--------------	------	-------	--------------------

*** MAGNETOMETER RECORDS ***

2315	170287			MGRA B	MAGNETICS R-01	GDC	32-348N	117-548W	sCRGNO1WT
0342	010387			MGRA E	MAGNETICS R-01	GDC	1-463S	137-235W	sCRGNO1WT
0350	010387			MGRA B	MAGNETICS R-02	GDC	1-457S	137-246W	sCRGNO1WT
1745	120387			MGRA E	MAGNETICS R-02	GDC	1-251S	151-388W	sCRGNO1WT
1748	120387			MGRA B	MAGNETICS R-03	GDC	1-246S	151-389W	sCRGNO1WT
2249	240387			MGRA E	MAGNETICS R-03	GDC	14-128S	149-087W	sCRGNO1WT
2256	240387			MGRA B	MAGNETICS R-04	GDC	14-142S	149-088W	sCRGNO1WT
1249	250387			MGRA E	MAGNETICS R-04	GDC	16-454S	149-258W	sCRGNO1WT

*** ECHOSOUNDER RECORDS ***

0019	240387			DPR3 B	EPC 3.5KHZ R-01	GDC	10-007S	148-288W	sCRGNO1WT
0745	240387			DPR3 E	EPC 3.5KHZ R-01	GDC	11-231S	148-424W	sCRGNO1WT
0750	240387			DPR3 B	EPC 3.5KHZ R-02	GDC	11-240S	148-426W	sCRGNO1WT
0940	250387			DPR3 E	EPC 3.5KHZ R-02	GDC	16-121S	149-209W	sCRGNO1WT

*** EXPENDABLE BATHY THERMOGRAPH RECORDS ***

1642	180287			BTXP	XBT 001	GDC	30-105N	120-212W	sCRGNO1WT
0357	190287			BTXP	XBT 002	GDC	28-363N	121-488W	sCRGNO1WT
1609	190287			BTXP	XBT 003	GDC	26-449N	123-267W	sCRGNO1WT
0409	200287			BTXP	XBT 004	GDC	24-522N	124-537W	sCRGNO1WT
1616	200287			BTXP	XBT 005	GDC	22-453N	125-551W	sCRGNO1WT
0405	210287			BTXP	XBT 006	GDC	20-394N	126-530W	sCRGNO1WT
1753	210287			BTXP	XBT 007	GDC	18-118N	127-555W	sCRGNO1WT
2208	210287			BTXP	XBT 008	GDC	17-269N	128-149W	sCRGNO1WT
0353	220287			BTXP	XBT 009	GDC	16-271N	128-415W	sCRGNO1WT
0933	220287			BTXP	XBT 010	GDC	15-268N	129-074W	sCRGNO1WT
1632	220287			BTXP	XBT 011	GDC	14-137N	129-341W	sCRGNO1WT
2150	220287			BTXP	XBT 012	GDC	13-187N	129-584W	sCRGNO1WT
0356	230287			BTXP	XBT 013	GDC	12-142N	130-243W	sCRGNO1WT
0924	230287			BTXP	XBT 014	GDC	11-157N	130-465W	sCRGNO1WT
1706	230287			BTXP	XBT 015	GDC	9-542N	131-206W	sCRGNO1WT
2218	230287			BTXP	XBT 016	GDC	9-008N	131-417W	sCRGNO1WT
0439	240287			BTXP	XBT 017	GDC	7-589N	132-059W	sCRGNO1WT
1035	240287			BTXP	XBT 018	GDC	7-111N	132-267W	sCRGNO1WT
1729	240287			BTXP	XBT 019	GDC	6-111N	132-473W	sCRGNO1WT
2256	240287			BTXP	XBT 020	GDC	5-232N	133-043W	sCRGNO1WT

#GMT #TIME	DDMMYY DATE	LOC T TIME Z	SAMP CODE	SAMPLE IDENTIFIER	DISP CODE	LAT.	LONG.	CRUISE LEG-SHIP
0440	250287		BTXP	XBT 021	GDC	4-363N	133-254W	sCRGN01WT
1115	250287		BTXP	XBT 022	GDC	3-431N	133-500W	sCRGN01WT
1710	250287		BTXP	XBT 023	GDC	2-490N	134-103W	sCRGN01WT
2324	250287		BTXP	XBT 024	GDC	1-595N	134-317W	sCRGN01WT
0530	260287		BTXP	XBT 025	GDC	1-031N	134-478W	sCRGN01WT
1149	260287		BTXP	XBT 026	GDC	0-088N	134-471W	sCRGN01WT
1824	260287		BTXP	XBT 027	GDC	0-176N	134-539W	sCRGN01WT
0540	270287		BTXP	XBT 028	GDC	0-017N	134-414W	sCRGN01WT
1005	270287		BTXP	XBT 029	GDC	0-372S	134-405W	sCRGN01WT
1750	270287		BTXP	XBT 030	GDC	1-271S	134-479W	sCRGN01WT
2250	270287		BTXP	XBT 031	GDC	1-444S	134-472W	sCRGN01WT
0519	280287		BTXP	XBT 032	GDC	1-166S	134-551W	sCRGN01WT
1135	280287		BTXP	XBT 033	GDC	0-586S	135-244W	sCRGN01WT
1739	280287		BTXP	XBT 034	GDC	1-336S	136-057W	sCRGN01WT
2347	280287		BTXP	XBT 035	GDC	2-034S	136-489W	sCRGN01WT
0443	010387		BTXP	XBT 036	GDC	1-414S	137-319W	sCRGN01WT
1124	010387		BTXP	XBT 037	GDC	1-504S	137-424W	sCRGN01WT
1721	010387		BTXP	XBT 038	GDC	2-002S	137-378W	sCRGN01WT
2341	010387		BTXP	XBT 039	GDC	1-462S	137-436W	sCRGN01WT
0206	020387		BTXP	XBT 040	GDC	1-310S	138-007W	sCRGN01WT
1041	020387		BTXP	XBT 041	GDC	0-298S	138-544W	sCRGN01WT
1945	020387		BTXP	XBT 042	GDC	0-586S	139-165W	sCRGN01WT
2322	020387		BTXP	XBT 043	GDC	1-301S	139-177W	sCRGN01WT
0447	030387		BTXP	XBT 044	GDC	2-189S	139-151W	sCRGN01WT
1111	030387		BTXP	XBT 045	GDC	2-457S	139-275W	sCRGN01WT
1815	030387		BTXP	XBT 046	GDC	1-466S	139-515W	sCRGN01WT
2307	030387		BTXP	XBT 047	GDC	1-050S	140-093W	sCRGN01WT
0513	040387		BTXP	XBT 048	GDC	0-090S	140-282W	sCRGN01WT
1053	040387		BTXP	XBT 049	GDC	0-388N	140-471W	sCRGN01WT
1729	040387		BTXP	XBT 050	GDC	1-366N	141-111W	sCRGN01WT
2320	040387		BTXP	XBT 051	GDC	2-292N	141-307W	sCRGN01WT
0534	050387		BTXP	XBT 052	GDC	3-240N	141-530W	sCRGN01WT
1102	050387		BTXP	XBT 053	GDC	4-097N	142-123W	sCRGN01WT
1740	050387		BTXP	XBT 054	GDC	3-514N	142-328W	sCRGN01WT
2307	050387		BTXP	XBT 055	GDC	3-041N	142-529W	sCRGN01WT
0530	060387		BTXP	XBT 056	GDC	2-060N	143-149W	sCRGN01WT
1051	060387		BTXP	XBT 057	GDC	1-171N	143-270W	sCRGN01WT
1739	060387		BTXP	XBT 058	GDC	0-147N	143-515W	sCRGN01WT
2332	060387		BTXP	XBT 059	GDC	0-427S	144-125W	sCRGN01WT
0604	070387		BTXP	XBT 060	GDC	1-469S	144-361W	sCRGN01WT
1107	070387		BTXP	XBT 061	GDC	2-360S	144-525W	sCRGN01WT
1800	070387		BTXP	XBT 062	GDC	2-254S	145-183W	sCRGN01WT
2343	070387		BTXP	XBT 063	GDC	1-367S	145-324W	sCRGN01WT
J457	080387		BTXP	XBT 064	GDC	0-529S	145-481W	sCRGN01WT
1804	080387		BTXP	XBT 065	GDC	0-565N	146-316W	sCRGN01WT

#GMT #TIME	DDMMYY DATE	LOC TIME	T Z	SAMP CODE	SAMPLE IDENTIFIER	DISP CODE	LAT.	LONG.	CRUISE LEG-SHIP
2330	080387			BTXP	XBT 066	GDC	1-424N	146-492W	sCRGNO1WT
0534	090387			BTXP	XBT 067	GDC	2-340N	147-092W	sCRGNO1WT
1107	090387			BTXP	XBT 068	GDC	2-388N	147-289W	sCRGNO1WT
1752	090387			BTXP	XBT 069	GDC	1-415N	147-548W	sCRGNO1WT
2327	090387			BTXP	XBT 070	GDC	0-551N	148-122W	sCRGNO1WT
0526	100387			BTXP	XBT 071	GDC	0-039N	148-325W	sCRGNO1WT
1104	100387			BTXP	XBT 072	GDC	0-434S	148-504W	sCRGNO1WT
1746	100387			BTXP	XBT 073	GDC	1-356S	149-158W	sCRGNO1WT
2259	100387			BTXP	XBT 074	GDC	2-181S	149-337W	sCRGNO1WT
0500	110387			BTXP	XBT 075	GDC	3-091S	149-549W	sCRGNO1WT
0945	110387			BTXP	XBT 076	GDC	3-507S	150-108W	sCRGNO1WT
1833	110387			BTXP	XBT 077	GDC	4-491S	150-431W	sCRGNO1WT
2320	110387			BTXP	XBT 078	GDC	4-086S	150-557W	sCRGNO1WT
0525	120387			BTXP	XBT 079	GDC	3-178S	151-112W	sCRGNO1WT
1124	120387			BTXP	XBT 080	GDC	2-236S	151-235W	sCRGNO1WT
1735	120387			BTXP	XBT 081	GDC	1-265S	151-384W	sCRGNO1WT
2345	120387			BTXP	XBT 082	GDC	0-309S	151-554W	sCRGNO1WT
0514	130387			BTXP	XBT 083	GDC	0-171N	152-074W	sCRGNO1WT
2234	130387			BTXP	XBT 084	GDC	0-443N	152-433W	sCRGNO1WT
0557	140387			BTXP	XBT 085	GDC	1-002N	153-271W	sCRGNO1WT
1004	140387			BTXP	XBT 086	GDC	1-136N	153-501W	sCRGNO1WT
1753	140387			BTXP	XBT 087	GDC	1-002N	153-456W	sCRGNO1WT
0438	150387			BTXP	XBT 088	GDC	0-240N	152-285W	sCRGNO1WT
1140	150387			BTXP	XBT 089	GDC	0-046N	151-308W	sCRGNO1WT
1733	150387			BTXP	XBT 090	GDC	0-057S	150-401W	sCRGNO1WT
2321	150387			BTXP	XBT 091	GDC	0-066S	149-528W	sCRGNO1WT
0455	160387			BTXP	XBT 092	GDC	0-073S	149-217W	sCRGNO1WT
1149	160387			BTXP	XBT 093	GDC	0-259S	148-397W	sCRGNO1WT
1856	160387			BTXP	XBT 094	GDC	0-259S	147-433W	sCRGNO1WT
2325	160387			BTXP	XBT 095	GDC	0-223S	147-159W	sCRGNO1WT
0512	170387			BTXP	XBT 096	GDC	0-400S	146-402W	sCRGNO1WT
1109	170387			BTXP	XBT 097	GDC	0-375S	145-511W	sCRGNO1WT
1841	170387			BTXP	XBT 098	GDC	0-535S	145-014W	sCRGNO1WT
2303	170387			BTXP	XBT 099	GDC	1-173S	144-395W	sCRGNO1WT
0450	180387			BTXP	XBT 100	GDC	1-180S	144-276W	sCRGNO1WT
1050	180387			BTXP	XBT 101	GDC	1-285S	143-414W	sCRGNO1WT
1904	180387			BTXP	XBT 102	GDC	1-402S	142-166W	sCRGNO1WT
2355	180387			BTXP	XBT 103	GDC	1-453S	141-248W	sCRGNO1WT
0521	190387			BTXP	XBT 104	GDC	1-481S	140-322W	sCRGNO1WT
0006	200387			BTXP	XBT 105	GDC	1-413S	142-014W	sCRGNO1WT
0521	200387			BTXP	XBT 106	GDC	1-395S	142-559W	sCRGNO1WT

#GMT #TIME #	DDMMYY DATE	LOC TIME	T Z	SAMP CODE	SAMPLE IDENTIFIER	DISP CODE	LAT.	LONG.	CRUISE LEG-SHIP
1142	200387			BTXP	XBT 107	GDC	1-279S	144-064W	sCRGNO1WT
1918	200387			BTXP	XBT 108	GDC	0-578S	145-222W	sCRGNO1WT
2338	200387			BTXP	XBT 109	GDC	0-480S	146-008W	sCRGNO1WT
0521	210387			BTXP	XBT 110	GDC	0-384S	146-580W	sCRGNO1WT
1118	210387			BTXP	XBT 111	GDC	0-255S	147-333W	sCRGNO1WT
1807	210387			BTXP	XBT 112	GDC	0-279S	146-531W	sCRGNO1WT
0029	220387			BTXP	XBT 113	GDC	1-277S	147-129W	sCRGNO1WT
0547	220387			BTXP	XBT 114	GDC	2-296S	147-111W	sCRGNO1WT
1006	220387			BTXP	XBT 115	GDC	3-203S	147-099W	sCRGNO1WT
1824	220387			BTXP	XBT 116	GDC	4-543S	147-342W	sCRGNO1WT
0020	230387			BTXP	XBT 117	GDC	5-522S	147-524W	sCRGNO1WT
0610	230387			BTXP	XBT 118	GDC	6-566S	148-091W	sCRGNO1WT
0957	230387			BTXP	XBT 119	GDC	7-377S	148-220W	sCRGNO1WT
1834	230387			BTXP	XBT 120	GDC	8-551S	148-220W	sCRGNO1WT
2356	230387			BTXP	XBT 121	GDC	9-563S	148-285W	sCRGNO1WT
0608	240387			BTXP	XBT 122	GDC	11-050S	148-394W	sCRGNO1WT
1048	240387			BTXP	XBT 123	GDC	11-576S	148-478W	sCRGNO1WT

END SAMPLE INDEX