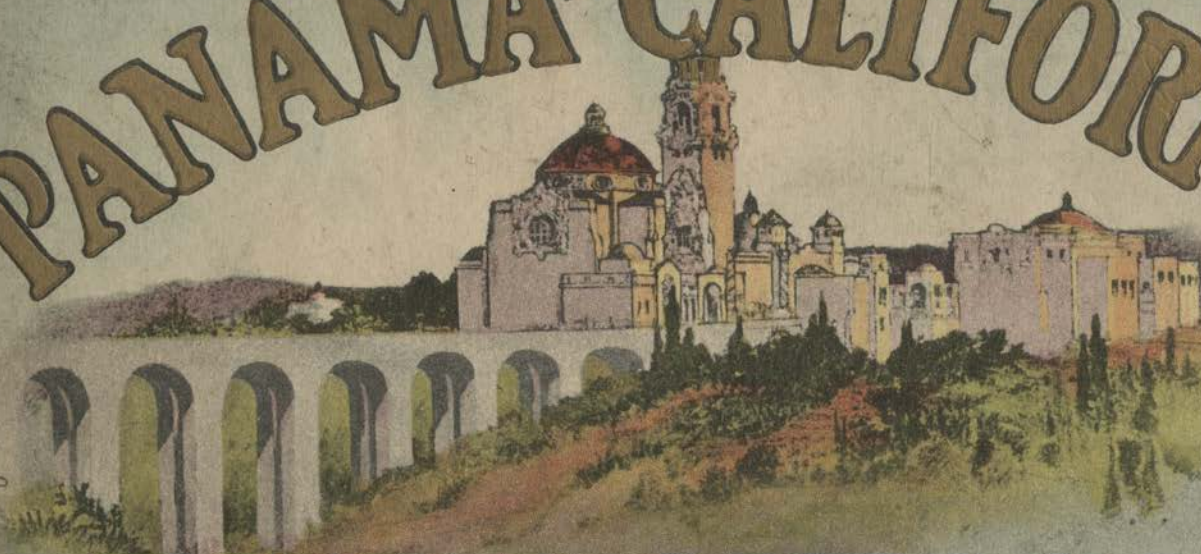


# PANAMA-CALIFORNIA



## EXPOSITION

AND VICINITY

*Art Views*

# DESCRIPTIVE VIEWS IN COLORS

*of the*

## Panama California Exposition 1915

Arranged by CHARLES A. WIDGER, A. M.

*Author, Lecturer and Traveler.*

Presenting the History of Man, and the Evolution of his Arts and Sciences.

Housed in Buildings of Beautiful Colonial Architecture in a  
Gorgeous Setting of Tropical Verdure.

*Copyright 1914*

AROUND THE WORLD VIEWS COMPANY  
Northwestern Bldg., Fifth Ave. and Lake St.  
Chicago, U. S. A.

ALL RIGHTS RESERVED

*Exposition to be open entire year 1915*



# DESCRIPTION OF VIEWS

## California State Building. (Front Cover).

The California State Building is Spanish Renaissance of the sixteenth and seventeenth centuries with ornament in the Churriguerresque.

The group to which this building belongs dominates the Exposition in the same wonderful picturesque manner as many instances in Spain and Mexico, notably Toledo and Tasco.

The dome recalls and rivals that at Oaxaca in its beautiful coloring of tile.

The Great California State Building looks to the unpractised eye as if it had been in its place for hundreds of years, solid and grand, its walls of concrete and many feet thick, with wings and jutting angles it dominates the whole view as you cross the bridge to the Exposition.

The great dome that surmounts it is copied after the wonderful Cathedral of Arizaba, Mexico, and its wonderful color is supplied by the colored tile. No paint mars the beauty of the California Building as it stands on its sunlit hill, its enormous tower, 500 feet above sea level, visible 100 miles at sea, its minarets and points decorated with colored tile, the roof beneath it shouldering its way to the clouds as if daring Jupiter Pluvius to drench its acres of old tiles; tiles gathered from the old structures of Mexico, Central America, and Peru; its cover, a roof that will endure for all time and present a vivid picture for future generations.

Inside the building is found practically everything that illustrates the History of Golden California from the time that Cabrillo discovered San Diego in 1542 to the present day.

## Home Economy Building.

The Home Economy Building is modeled after the stately Hacienda of Conde d'Heras in Southern Mexico; it is surmounted by a tower copied from the palace of Philip V. at Monteray, Spain, and its doorways and windows are most elaborately decorated with carvings and tracery.

The whole building is covered with a lacework of ornamentation, and like all its fellows has the arcade along its front.

Inside are the wonders of electricity for the home, and everything pertaining to cooking and housework, children's departments and society functions, and everything of interest to women and the home.

## Science and Education Building.

This building is all that its name implies, and in addition there are more of the wonders of the Smithsonian and National Museums, and you will find much to interest and please you.

## Platycerium Alicorne. Australia.

This is a Staghorn Fern in the Exposition Nursery. It feeds on moisture and air and comes from Australia.

## The Agricultural and Horticultural Building.

The Agricultural and Horticultural Building on its Prado Front is in design a dignified building of the Churriguerresque style. The loggia is in the character of the Monastery of San Augustin, Queretaro, Mexico, middle of the eighteenth century.

The east portion of the building simulates a great Spanish Monastery with a Castle facade as its dominating feature in the Spanish Churriguerresque with Baroque features.

Towards the west, the apse and choir of the chapel extends from the great mass of the building, making one side of a charming Spanish Court.

The building itself is enormous, larger than any three on the grounds.

Inside will be found everything of interest to those engaged in agricultural and horticultural pursuits and everything pertaining to the cultivation of the soil from the flower bed in the yard to the greatest of the ranches or farms.



HOME ECONOMY BUILDING.



SCIENCE AND EDUCATION BUILDING.





PLATYCERIUM ALICORNE, AUSTRALIA. PANAMA-CALIFORNIA EXPOSITION.



THE AGRICULTURAL AND HORTICULTURAL BUILDING.



A PALM DRIVE.

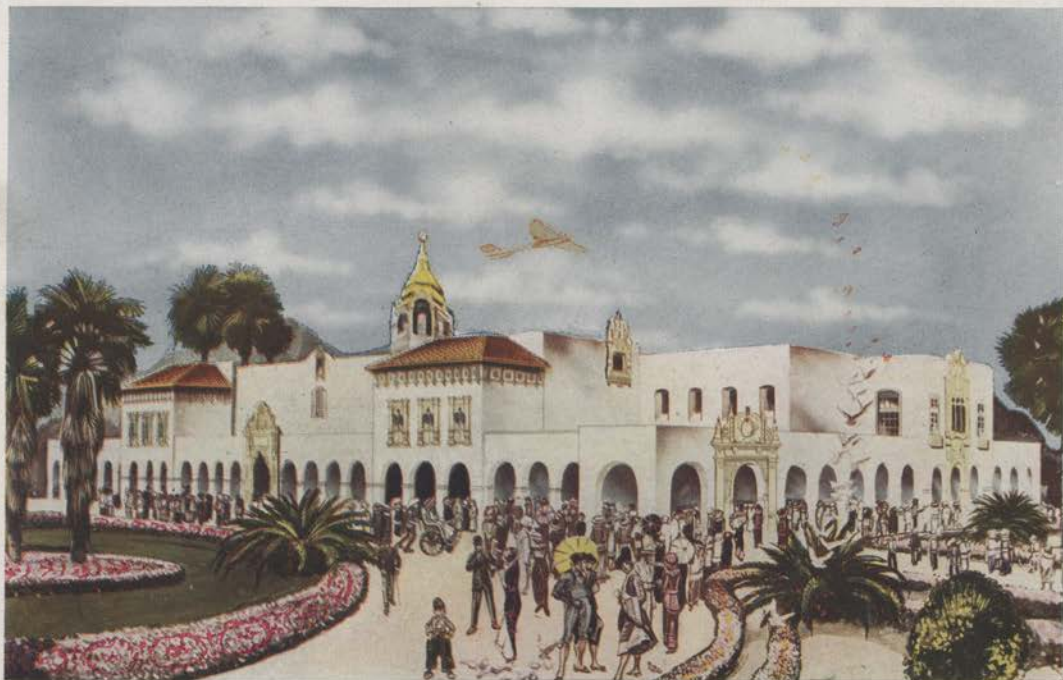




WATER FETE, PANAMA-CALIFORNIA EXPOSITION.



SAN GABRIEL MISSION.



THE ARTS AND CRAFTS BUILDING.





FLOWER BORDERED PATHS.



U. S. GRANT HOTEL.



MISSION CLIFF GARDENS.





DOORWAY OF THE HOME ECONOMY BUILDING.



U. S. GRANT'S RESIDENCE.



GIANT PALMS. PANAMA-CALIFORNIA EXPOSITION.





MR. J. D. SPRECKELS' HOME.

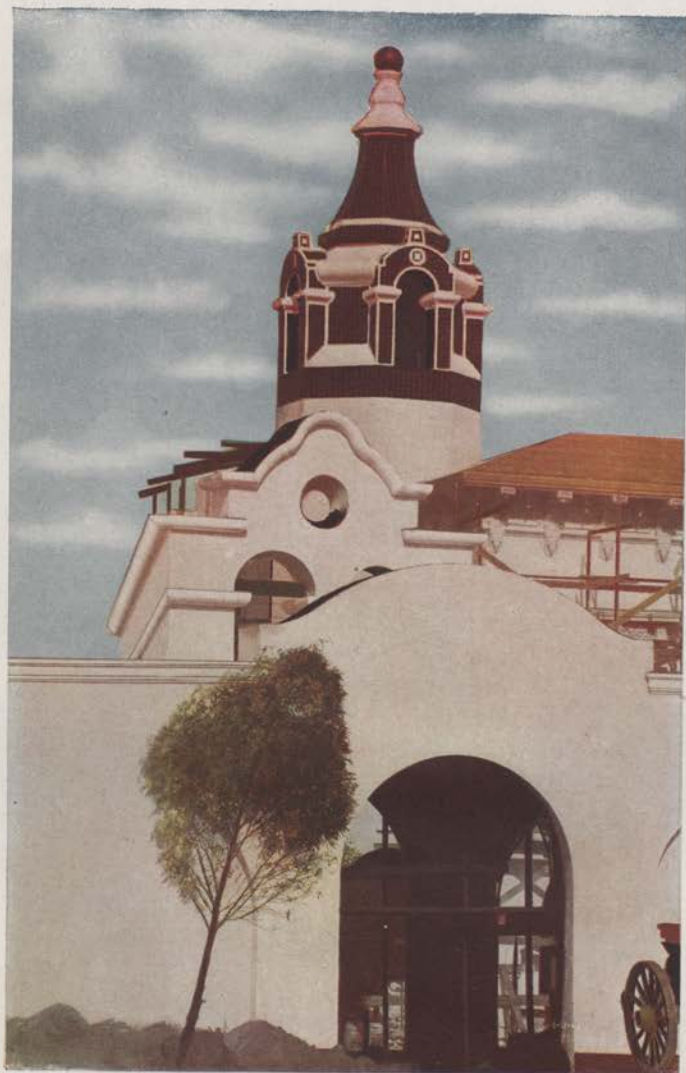


HOTEL DEL CORONADO.

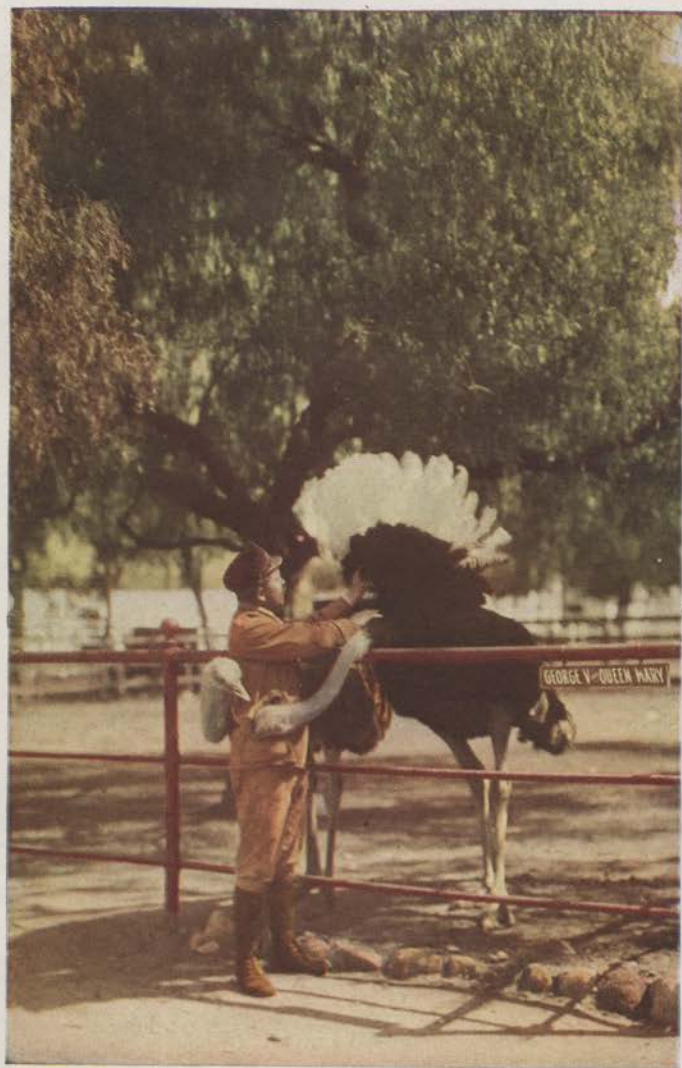


SAN JUAN CAPISTRANO MISSION.





TOWER OF THE ARTS AND CRAFTS BUILDING.



CAWSTON'S OSTRICH FARM, PASADENA, CAL.



TOWER OF THE HOME ECONOMY BUILDING.





THE OLD CHAPEL AT LA JOLLA.



STREET SCENE, SAN DIEGO, CAL.



RAMONA'S HOME.





SAN JUAN CAPISTRANO MISSION.



THE JAPANESE GARDENS AT LOS ANGELES.



SAN DIEGO MISSION.





THE OCEAN BEACH AT SAN DIEGO.



THE COURT HOUSE AND COUNTY JAIL, SAN DIEGO COUNTY.

### **Palm Drive.**

When you visit the Exposition you will want to take a ride through some of these drives, as they are perhaps the most beautiful in the world, and you will find several in the vicinity of the Exposition.

### **Water Fete, Panama-California Exposition.**

This is a picture of the proposed Water Fete on opening night at the Exposition, and the management confidently expect more than 1,000,000 visitors on that evening.

### **San Gabriel Mission.**

This mission was founded in 1771, by Padres Benito Cambon and Angel Semoro, by order of the Old Spanish Father Junipero Serra.

The Church, over a century old, is still in a good state of preservation.

The four bells of San Gabriel Mission originally came from Spain; originally there were six of them, and are still in use calling the faithful to mass, and ringing the Angelus.

It is said that Ramona worshipped in this church when she visited the San Jacinto Mountains and received here the wonderful blessing to her life and character as described by that great novelist, Helen Hunt Jackson.

### **The Arts and Crafts Building.**

The Arts and Crafts Building is one that will delight the eye of the world traveler.

It is builded in Mission style with the east front showing the strong influence of the Sanctuario de Guadalupe, Guadalajara, Mexico.

A building undoubtedly strongly influencing the Mission work of the Spanish padres in California.

Because of this and the Carmelite Belfry over the arcade or "PORTALES" the style of this building may truly be designated as Mission.

The ornamental facade on the Prado is Churrigueresque, late eighteenth century.

This building has a wonderful tower covered with colored tile that from the entrance seems to be gold.

On closer examination this tower is covered with a peculiar diamond shaped black and orange tile, that seems from a distance to be pure gold leaf shining in the sunlight.

Arcades stretch along the forefront of this building the whole length.

Cool shaded walks beneath these arches and a tiny court, between the arched colonnade and the entrance, charms one, and together with the fragrance of the flowers and wonderful shrubs—shrubs gathered from the seven seas—make a setting for this building and others of similar beauty in the grounds.

Inside this building are the wonders from the National Museum, the things that best illustrate the progress of man in the arts and sciences from the time man marked a huge rock with a smaller one by the simple expedient of clipping it with a sharp stone, to the modern Wonders of Inter-Communication; modern handicraft and modern progress.

### **Flower Bordered Paths.**

This is one of the flower bordered paths in Mission Cliff Gardens.

One of the most beautiful and restful spots in all Southern California is this beautiful park with its flowered paths and its lovely fountain and trees.

### **U. S. Grant Hotel.**

### **Mission Cliff Gardens.**

Around the Fountain.

### **Doorway of the Home Economy Building. Woman's Building.**

Copied from the Hacienda of the Conde d'Heras, Mexico.

### **U. S. Grant's Residence.**



890  
PAGE  
T  
872  
-61  
1954  
1711

### **Giant Palms.**

This picture shows the method used in transplanting Giant Palms at the Panama California Exposition.

More than three thousand palms have been planted in the Exposition Grounds to delight the weary and furnish pleasant rest after a day of sight seeing.

### **Mr. J. D. Spreckels' Home.**

This home is said to have cost the owner more than one million dollars.

### **Hotel Del Coronado.**

### **San Juan Capistrano Mission.**

The Bells of this Old Spanish Mission make one dream of the days past and gone and arouse many pleasant memories.

Will remind you of some of the ruins in Old England or on the Continent.

### **Tower of the Arts and Crafts Building.**

The Tower of the Arts and Crafts Building is covered with colored tile in square, orange and black triangles.

From a distance the tower appears to be covered with burnished gold.

All colors on all buildings, roofs, domes and towers are of baked colored tile, no paints.

### **Cawston's Ostrich Farm, Pasadena, Cal.**

"ORIGINAL HOME" of the Ostrich is what they say of Cawston's Ostrich Farm.

On the banks of the Arroyo Seco and at its entrance a beautiful avenue of palms and flowers.

Here you will find displayed many thousand dollars worth of the finest feather goods in the world and many souvenirs that are very interesting.

There are all sizes and kinds of ostriches with more than 300 full grown birds, our pickpockets being of the number.

### **Tower of the Home Economy Building.**

Copied from the Palace of Philip V. of Spain at Montebay, Spain.

### **The Old Chapel at La Jolla.**

This old chapel at La Jolla is worthy of a visit as are also the Caves.

### **Street Scene, San Diego, Cal.**

This is a street scene looking north on Fifth Street from F Street.

### **Ramona's Home.**

Famed in song and story is Ramona's home and marriage place.

This home is visited by many thousands of people every year.

### **San Juan Capistrano Mission.**

Another view of this famous old mission.

### **The Japanese Gardens at Los Angeles.**

### **San Diego Mission.**

Famed all over the world.

### **The Ocean Beach at San Diego.**

### **The Court House and County Jail. San Diego County.**

This Court House is among the many public buildings of San Diego.

This huge pile of masonry, imposing and beautiful, typifies the strength, resources and unbounded ambition of the citizens of San Diego County.

