

*REPORT AND INDEX OF
UNDERWAY MARINE GEOPHYSICAL DATA*

WESTWARD EXPEDITION

LEG 11

(WEST11MV)

R/V MELVILLE

(Issued July 1995)

Ports:

Hobart, Tasmania (18 March 1995)
to
Hobart, Tasmania (14 April 1995)

Chief Scientist:

Douglas Luther (University of Hawaii)

Computer Technician - Ronald Moe

Resident Marine Technician - Ronald Comer

No Sea Beam Processor on board

Post-Cruise Processing and Report Preparation by the
Geological Data Center, Scripps Institution of Oceanography
La Jolla, California 92093-0223

Data Collection and Processing Funded by:
NSF OCE94-00707

NOTE: *This is an index of underway geophysical data edited and processed after the completion of the cruise leg and is intended primarily for informal use within the institution. This document is not to be reproduced or distributed outside Scripps without prior approval of the chief scientist or the Geological Data Center, Scripps Institution of Oceanography, La Jolla, California 92093-0223*

GDC Cruise I.D.# 266

**REPORT AND INDEX OF NAVIGATION
AND UNDERWAY GEOPHYSICAL DATA**

Processed by the Geological Data Center
Scripps Institution of Oceanography

Contents:

Index Chart - gives track of cruise leg, dates, ports, and mileage of each type of data collected.

Track Charts - annotated with dates and hour ticks.

Profiles - depth, magnetic and gravity free air anomaly vs. distance. (Sections of track with seismic reflection data have a wide black line along the bottom of the profile.)

Sample Index - list of begin/end times and positions of all underway records as well as samples and measurements from other disciplines if collected on the cruise leg.

NOTE: One or more of the underway data types may not be collected on a given cruise leg. For information on the availability and reproduction costs of data in the following forms, contact S.M. Smith, Curator, Geological Data Center, Scripps Institution of Oceanography, La Jolla, California 92093-0223.

Phone: (619)534-2752, FAX: (619)534-5306, Internet email: ssmith@ucsd.edu

1. Files on Exabyte, DAT or 1/2 inch magnetic tape:
 - a) Separate time series ASCII files of navigation, single beam depth, gravity and magnetics.
 - b) These same data in a merged ASCII file in the MGD77 Exchange Format.
 - c) SeaBeam depth data (binary, Sun byte order) in SIO Swath Bathymetry Format (not available on 1/2" tape).
 - d) SeaBeam Sidescan data (not available on 1/2" tape).
2. Microfilm (35 mm flowfilm) or hard copies of:
 - a) Underway watch log book
 - b) SeaBeam vertical beam profile/Sidescan records.
 - c) Echosounder records - 3.5 kHz frequency.
 - d) Magnetometer records.
 - e) Seismic reflection profiler records.
3. Navigation listing with times and positions of fixes and course and speed changes.
4. Plots:
 - a) Copies of archived track plots.
 - b) Copies of archived SeaBeam contour plots.
 - c) Custom plots in Mercator projection:
 - 1) Track plots.
 - 2) SeaBeam depth contour plots.
 - 3) Depth, magnetic or gravity values printed or profiled along track.

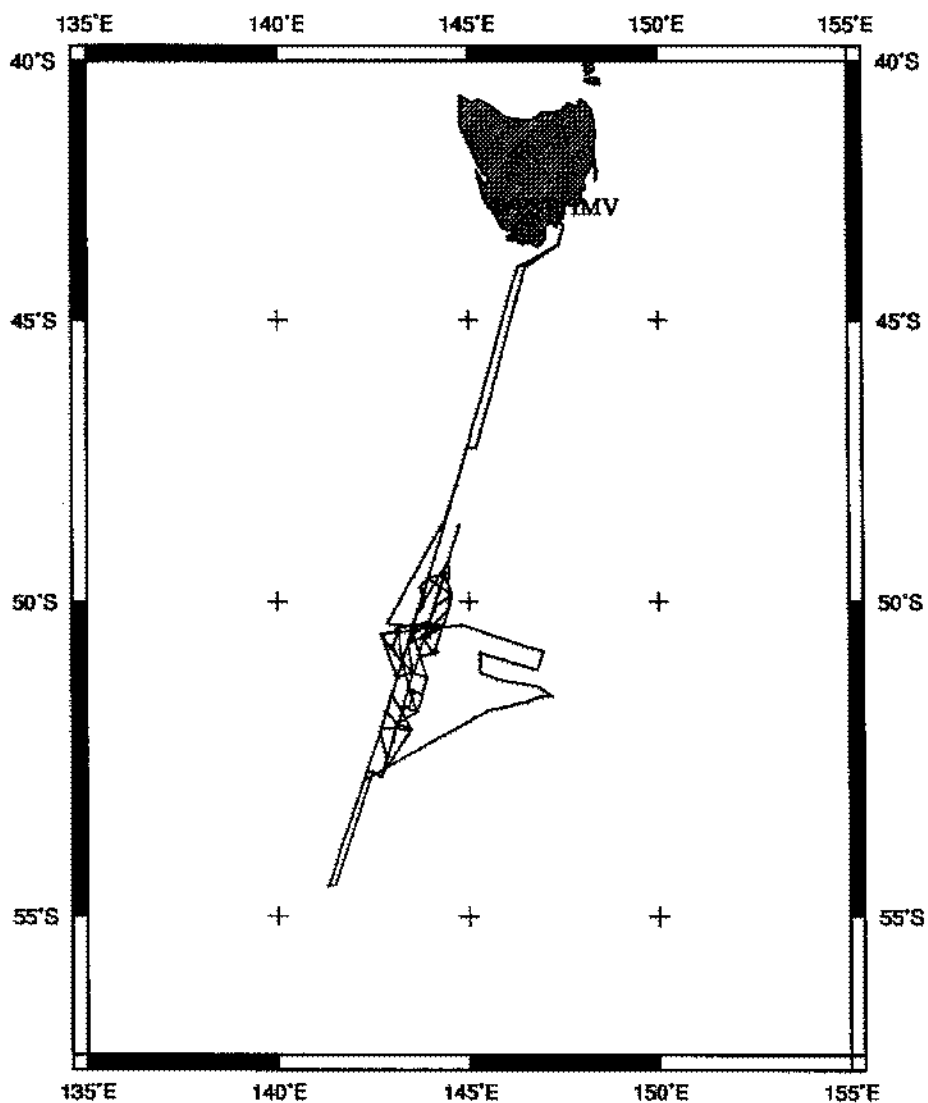
rev 7/93

SeaBeam 2000 Data Collected in Ancillary Mode

In the absence of funding for SeaBeam operations on this leg, SeaBeam data were collected in "ancillary mode". In this mode of operation, no Hardware Technician or SB/Underway Processor were on board and the types of realtime records and post-processed data products are reduced from those available under the fully funded mode.

The SeaBeam data remain proprietary to the SIO Shipboard Technical Support Group, not the chief scientist.

May 1993



WESTWARD LEG 11

=====

CHIEF SCIENTIST: D.Luther Univ.of Hawaii

CO-SCIENTISTS:

R.Watts (URI), J.Richman (OSU), A.Chave (WHOI), J.Filloux (SIO)

PORTS: Hobart, Australia - Hobart, Australia

DATES: 18 March - 14 April 1995

TOTAL MILEAGE OF UNDERWAY DATA COLLECTED

Cruise - 4198 miles

Magnetics - none collected

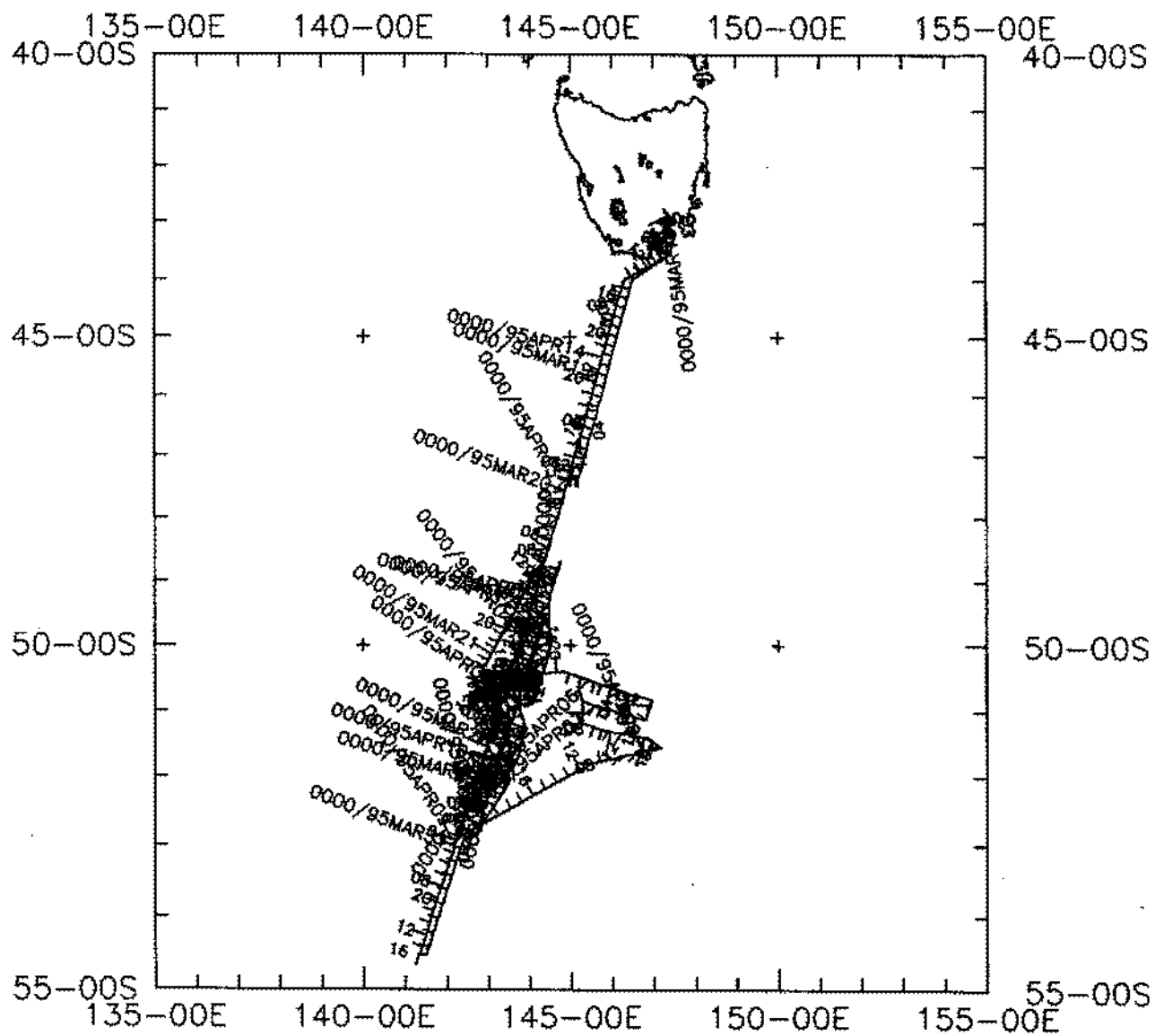
Bathymetry - 3858 miles

Seismic Reflection - none collected

Sea Beam - 3858 miles

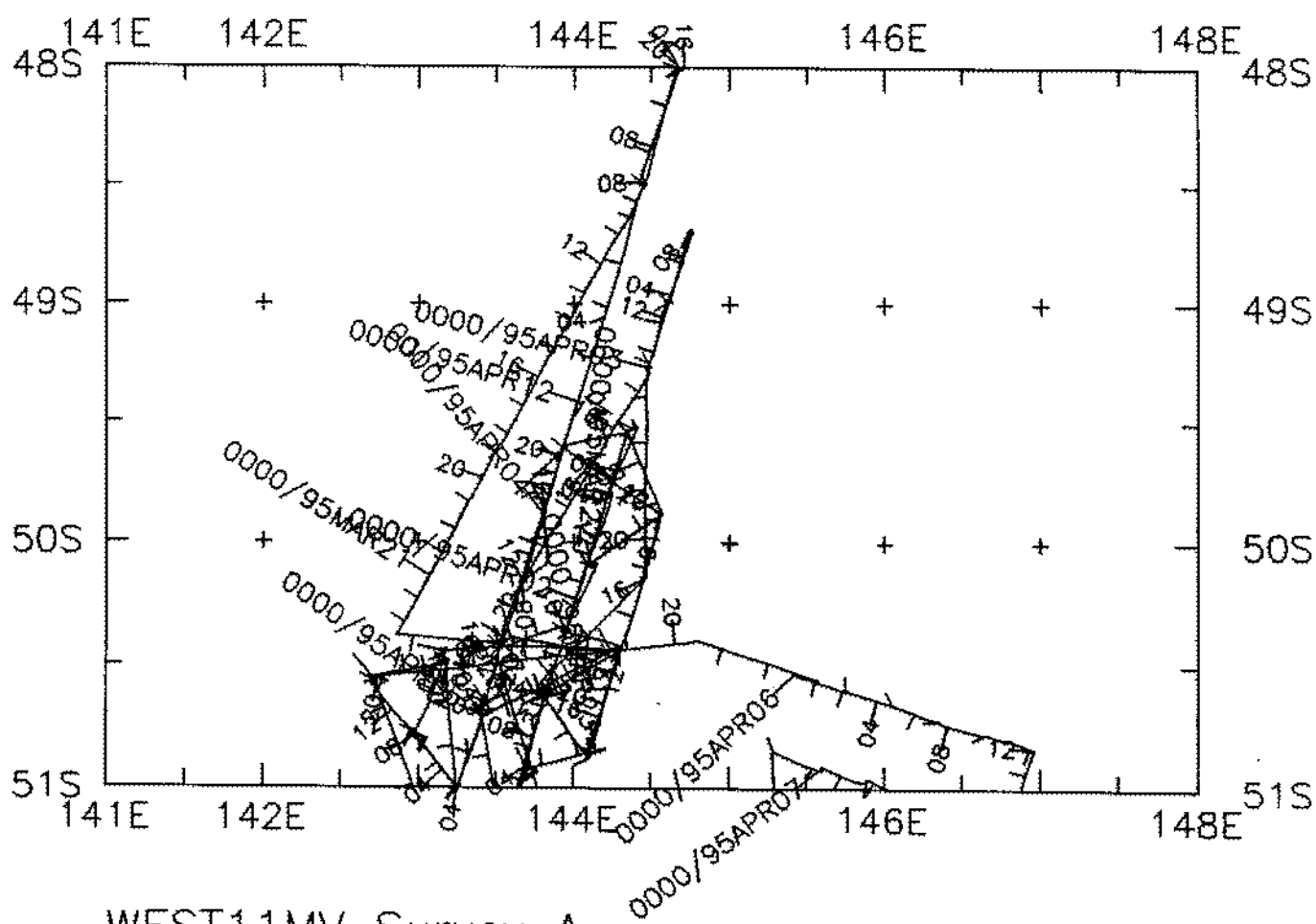
Gravity - 4198 miles - not processed

gravity meter malfunctioned



WESTWARD Leg 11 (WEST11MV)

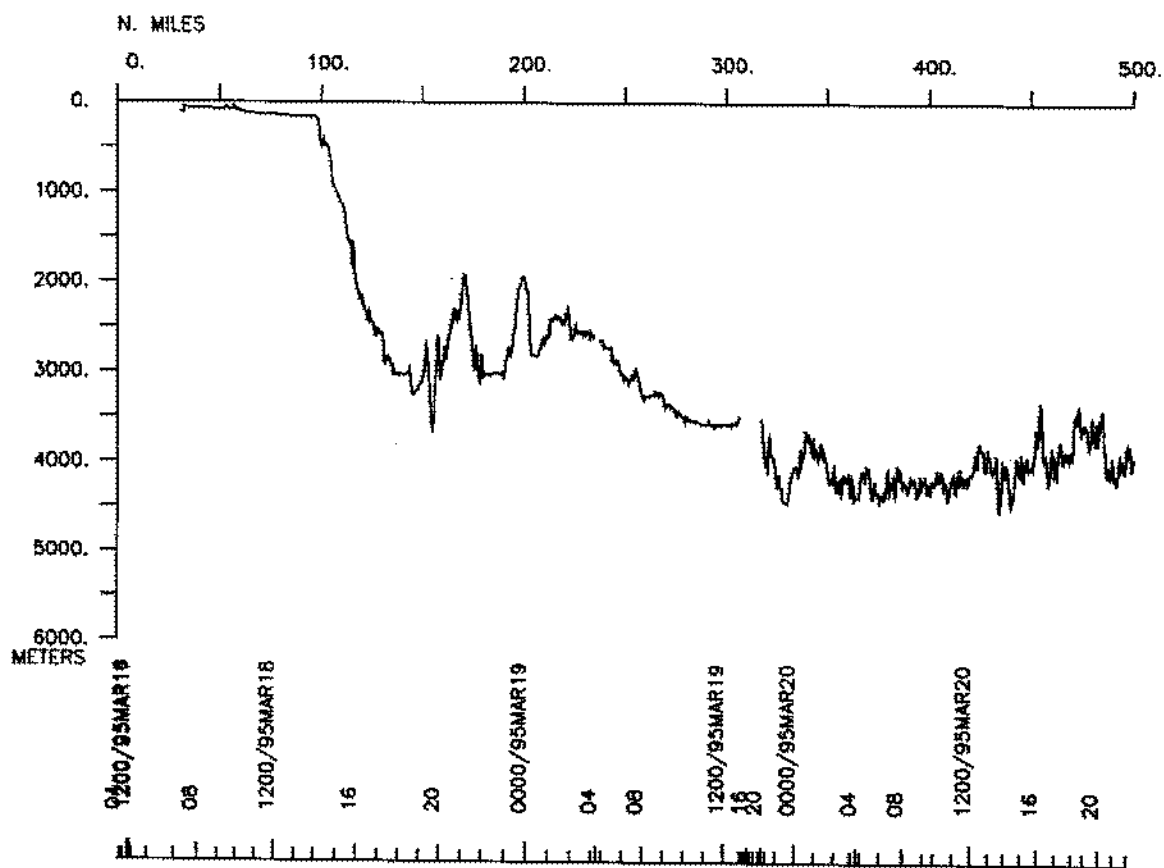
✱



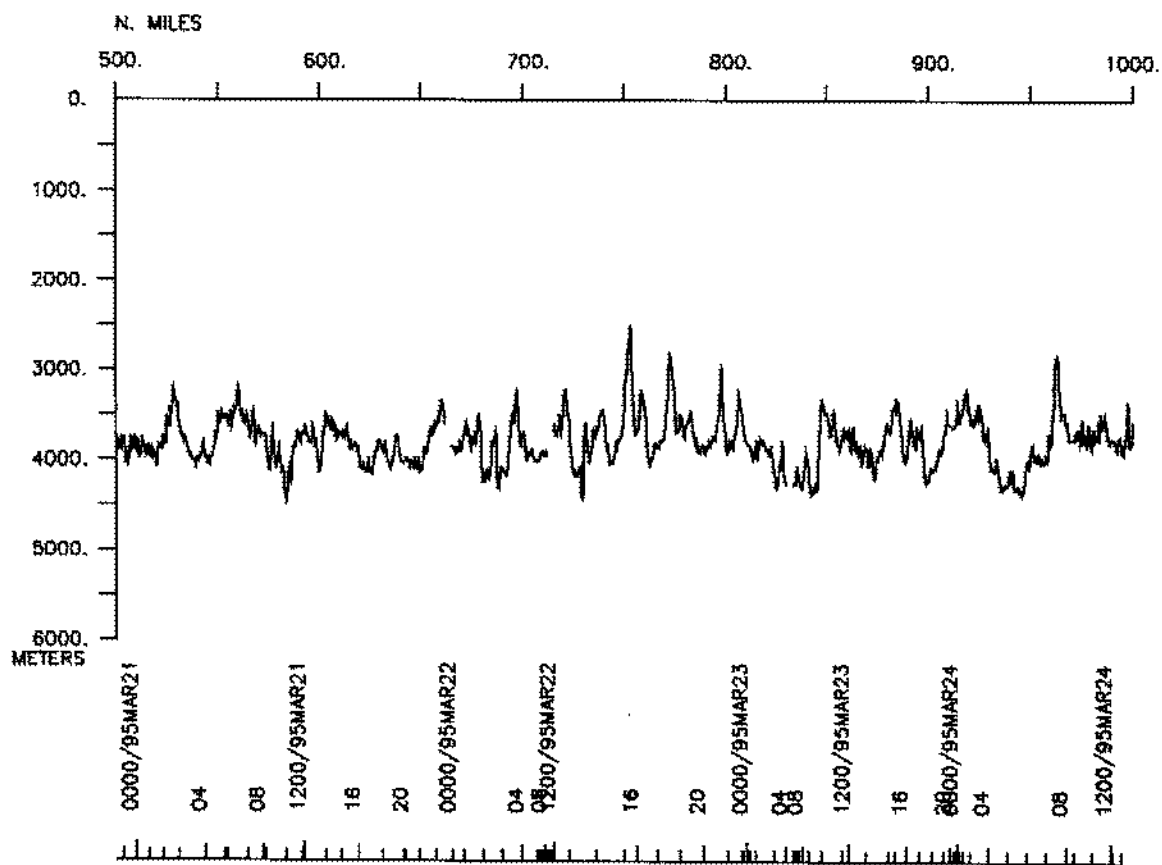
WEST11MV Survey A

*

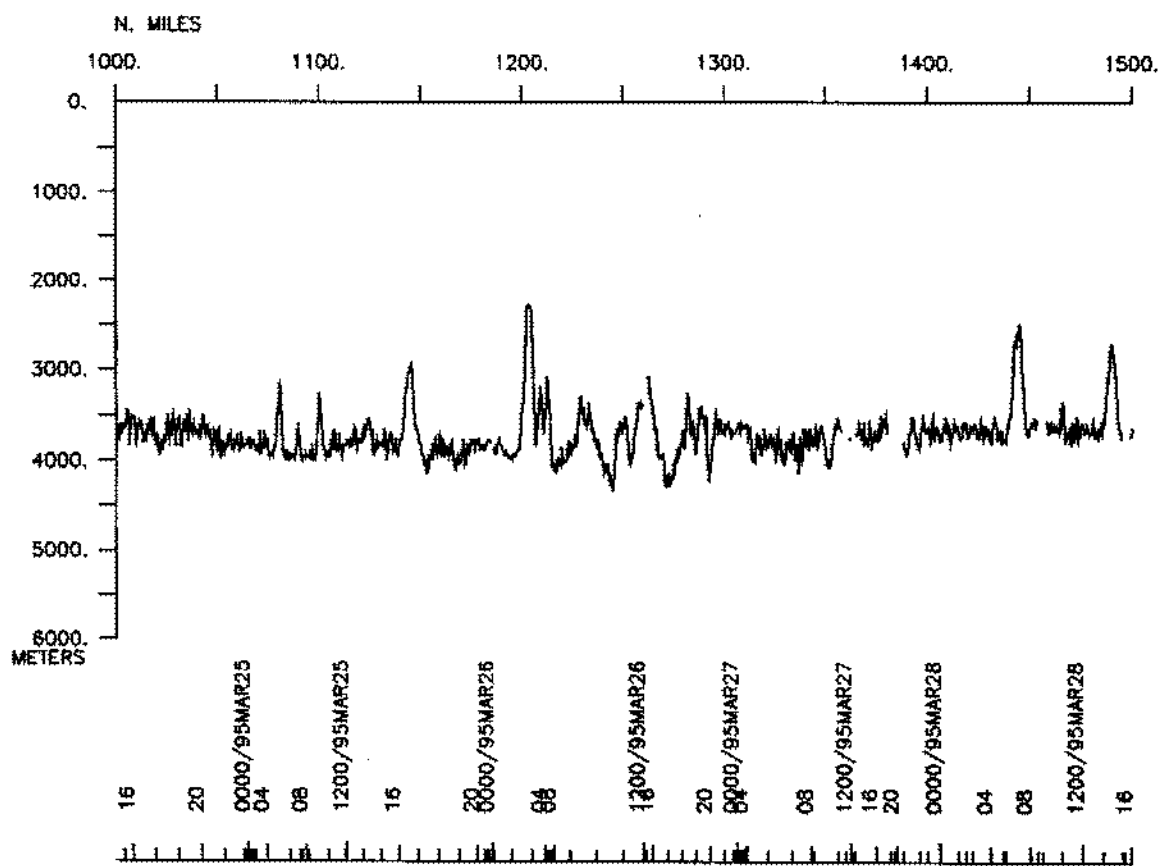
WESTWARD, Leg 11



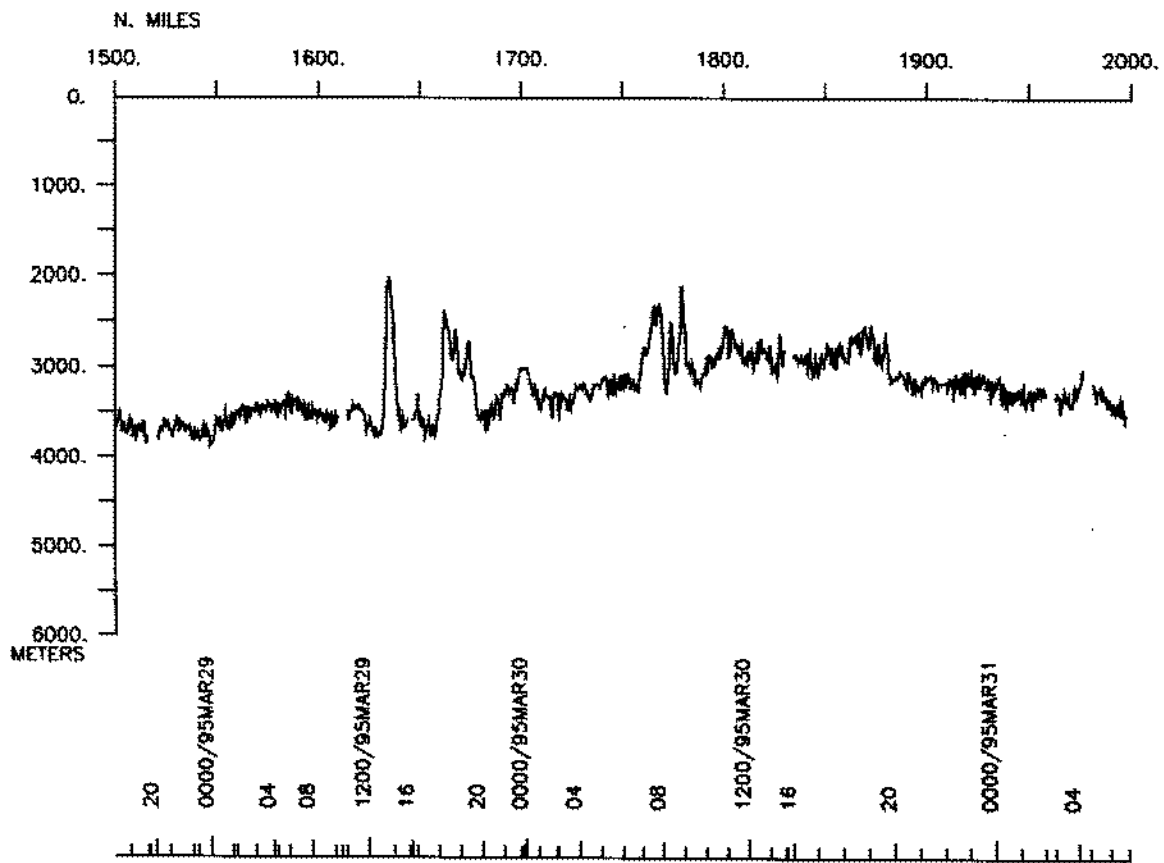
WESTWARD, Leg 11



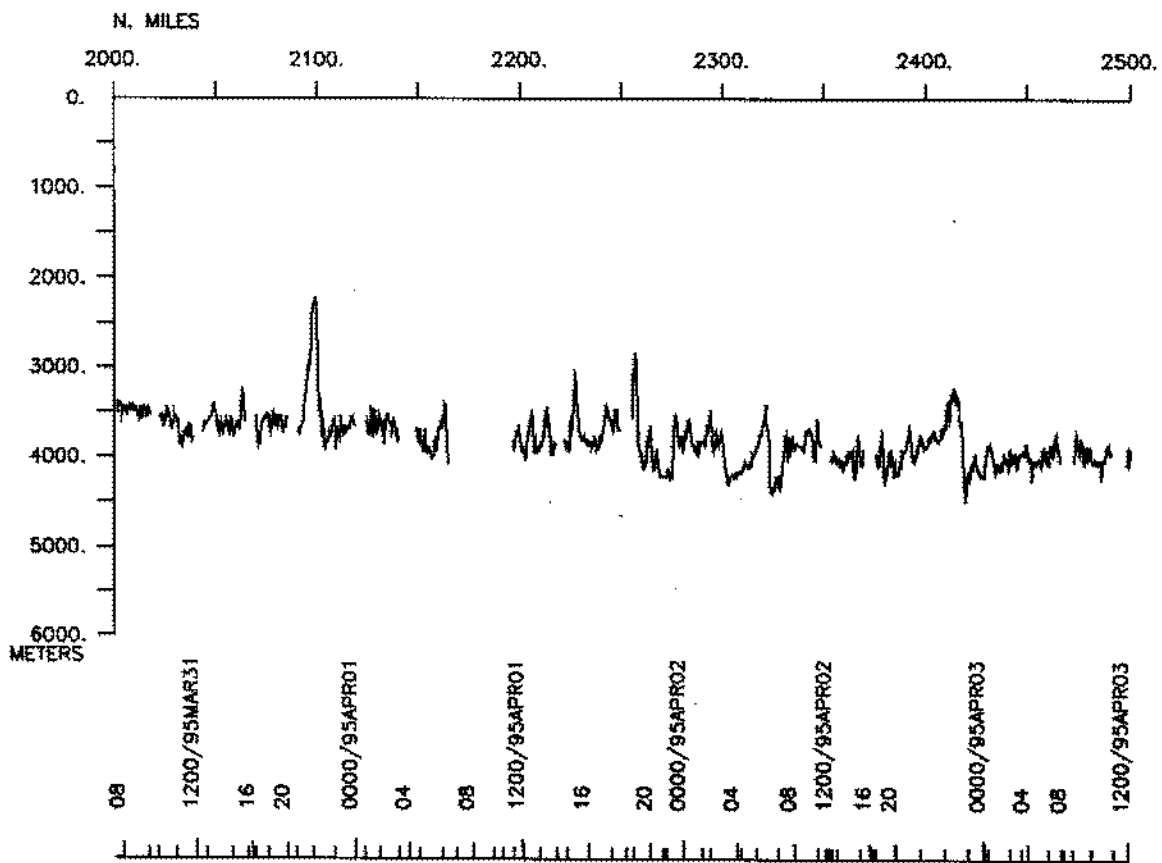
WESTWARD, Leg 11

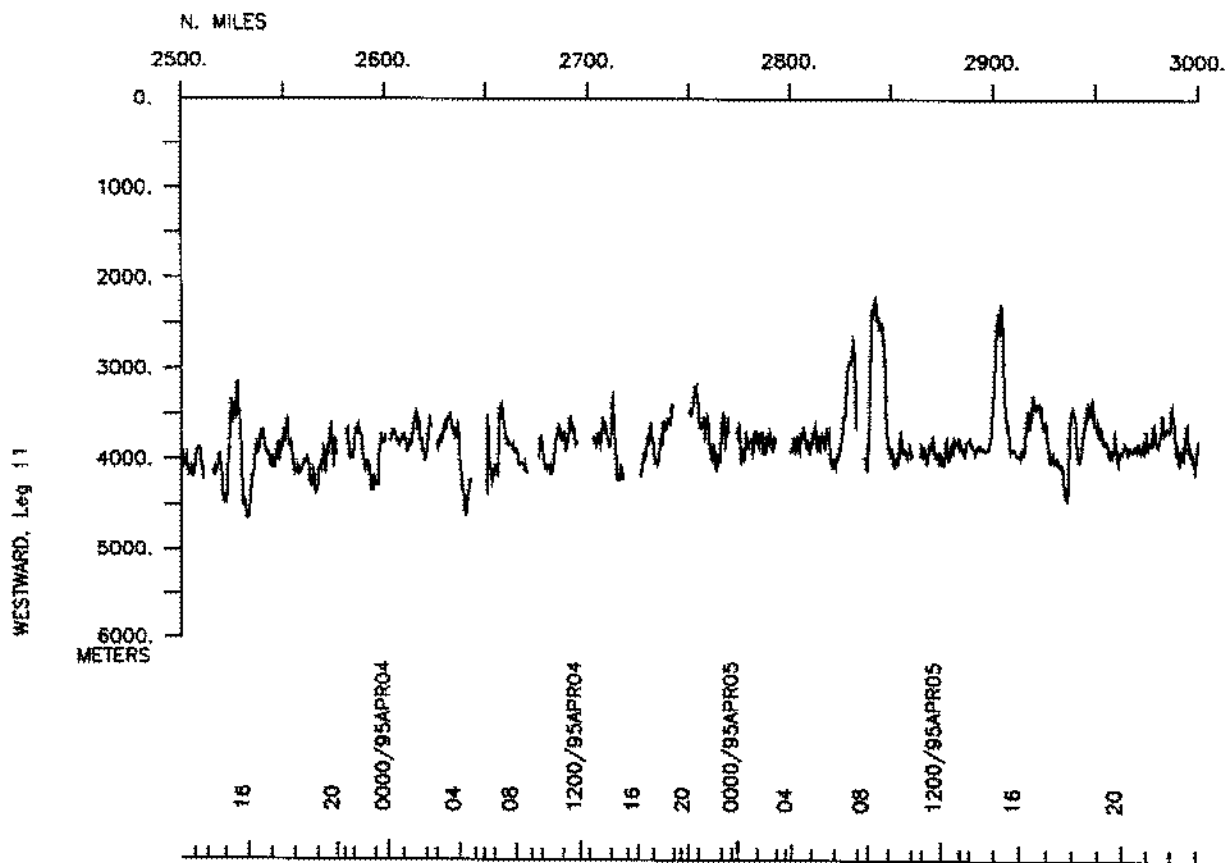


WESTWARD, Leg 11

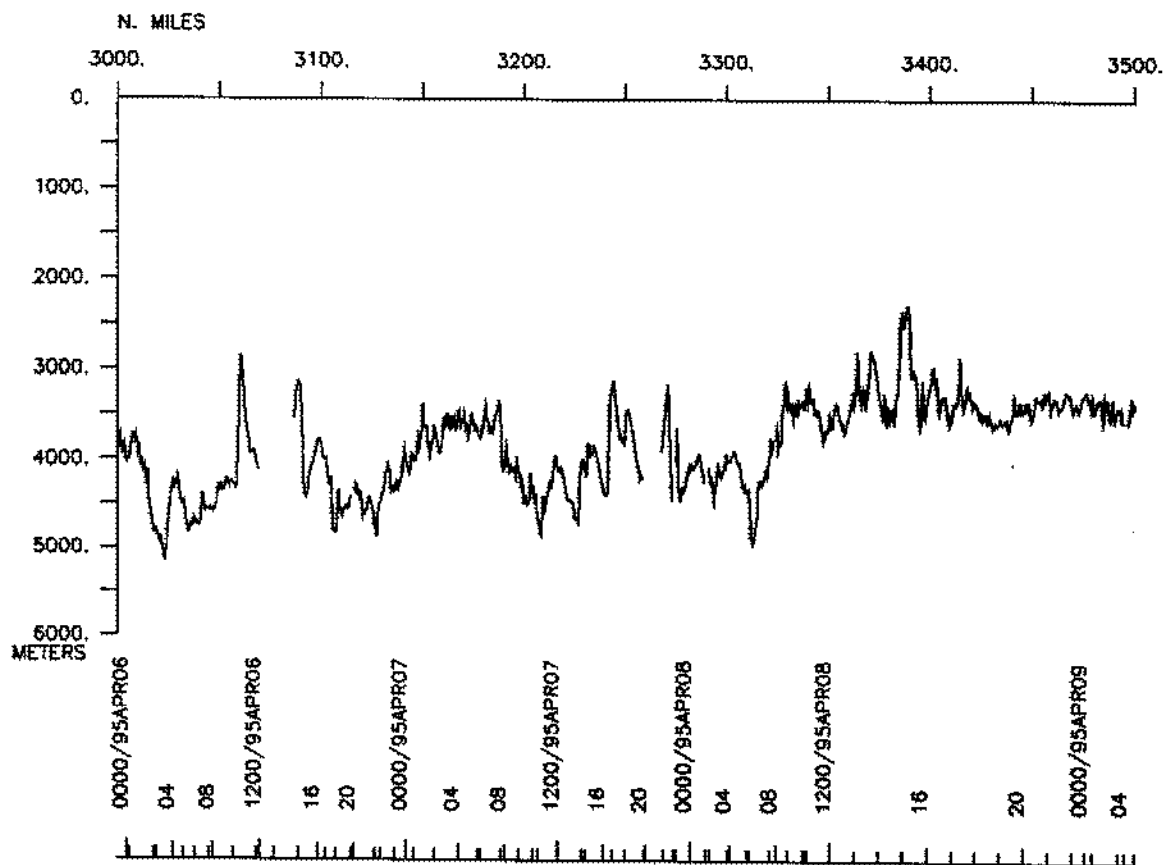


WESTWARD, Leg 11

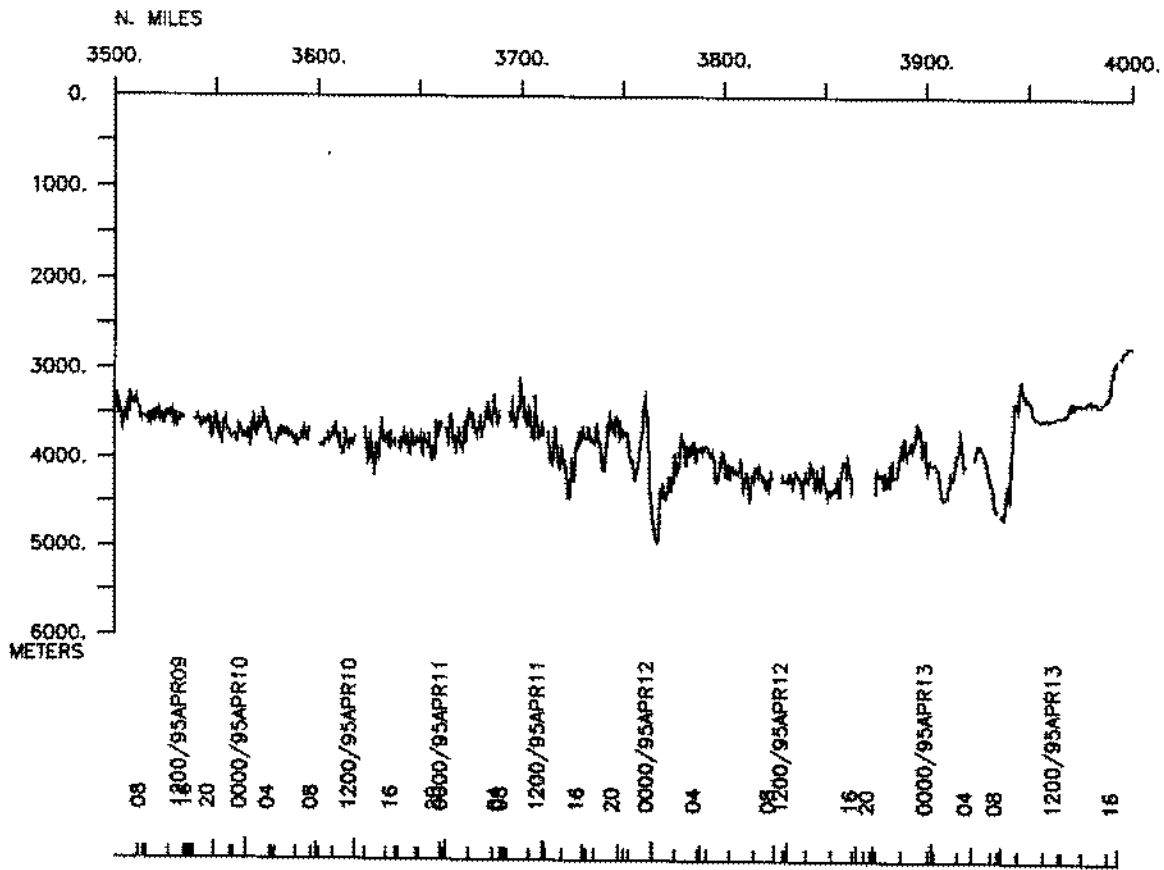




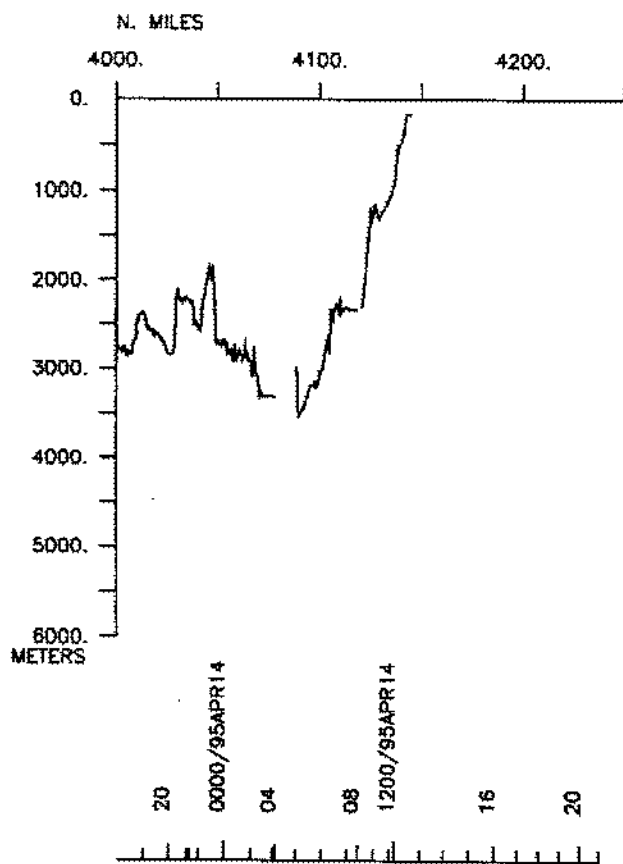
WESTWARD, Leg 11



WESTWARD, Leg 11



WESTWARD, Leg 11



S.I.O. SAMPLE INDEX

(Issued July 1995)

WESTWARD EXPEDITION

Leg 11

(WEST11MV)

R/V Melville

Hobart, Tasmania (18 March 1995)
to
Hobart, Tasmania (14 April 1995)

Chief Scientist: Douglas Luther, University of Hawaii

The Sample Index is a first level interdisciplinary listing of time, position, sample identification and disposition of all samples, records and measurements collected on this cruise leg. The index data are encoded at sea by the resident marine technician and processed on shore by the S.I.O. Geological Data Center shortly after the completion of the cruise leg.

Positions are interpolated on the basis of sample time by comparison to a single, edited navigation file. Samples beginning at one time and position and ending at another are entered on two consecutive lines. Disposition and sample type are represented by three and four character codes to permit future computer searches on these parameters. (Listings defining these codes are available from the Geological Data Center.)

GDC Cruise I.D.# 266

**** Ports ****

0500	180395	LGPT B Hobart, Tasmania, Aus.	42-53.00S 147-20.00E f WEST11MV
2123	140495	LGPT E Hobart, Tasmania, Aus.	42-53.00S 147-20.00E f WEST11MV

**** Personnel ****

#	*****NAME*****	*****TITLE*****	*****AFFILIATION*****	**CRID**
PECS UHI	Luther, Dr. D.	Chief Scientist	Univ. of Hawaii	WEST11MV
PECS URI	Watts, Dr. R.	Co-Chief Sci.	Univ. of Rhode Island	WEST11MV
PECS OSU	Richman, Dr. J.	Co-Chief Sci.	Oregon State Univ.	WEST11MV
PECS WHOI	Chave, Dr. A.	Co-Chief Sci.	Woods Hole Ocean. Ins	WEST11MV
PECS PORD	Filloux, Dr. J.	Co-Chief Sci.	Scripps Institution	WEST11MV
PERT STS	Comer, R. L.	Resident Tech.	Scripps Institution	WEST11MV
PECT STS	Moe, R.	Computer Eng.	Scripps Institution	WEST11MV
PESP PORD	Moeller, H.	Mech. Eng.	Scripps Institution	WEST11MV
PESP OSU	Root, D.	Sr. Res. Assoc.	Oregon State Univ.	WEST11MV
PESP URI	Holloway, D.	Computer Prog.	Univ. of Rhode Island	WEST11MV
PESP URI	Mulroney, M.	Technician	Univ. of Rhode Island	WEST11MV
PESP WHOI	Pettit, B.	Elec. Eng.	Woods Hole Ocean. Ins	WEST11MV
PESP WHOI	Bailey, J.	Technician	Woods Hole Ocean. Ins	WEST11MV
PEXN AUA	Miller, K.	Elec. Tech.	CSIRO, Australia	WEST11MV
PEST URI	Meiner, C.	Grad. Stud.	Univ. of Rhode Island	WEST11MV
PEST AUA	Phillips, H.	Grad. Stud.	CSIRO, Australia	WEST11MV
PEVL URI	McCormack, A.	Volunteer	Univ. of Rhode Island	WEST11MV
PEST AUA	Carvalho, O.	Grad. Stud.	Flinders Univ.	WEST11MV
PEST AUA	Hattfield, B.	Grad. Stud.	CSIRO, Australia	WEST11MV

**** NOTES ****

#An 'X' in the (B)egin/(E)nd column following the sample code indicates no
#sample or data recovered. A 'C' indicates continuation of data collection
#from before the beginning or after the end of a particular leg, (moored
#bottom instruments, for example.) The number appearing in the columns
#between the sample identifier and the disposition code, for many sample
#entries, is the water depth in corrected meters. Positions are in tenths
#of minutes.

#GMT DDMYY	SAMP B SAMPLE	DISP				p CRUISE
#TIME DATE TZ CODE E IDENTIFIER	CODE LATITUDE	LONGITUDE	c LEG-SHIP			

*** Underway data curator - S. M. Smith ext. 42752

*** Log books***

0705	180395	0	LBUW	B	Underway watch log	GDC	43-13.34S	147-31.33E	g	WEST11MV
1330	140495	0	LBUW	E	Underway watch log	GDC	43-53.75S	146-34.34E	g	WEST11MV

*** Sea Beam Records (vertical beam and side scan) ***

0719	180395	0	MBSR	B	v.beam&sscan r-01	GDC	43-15.92S	147-30.39E	g	WEST11MV
1230	140495	0	MBSR	E	v.beam&sscan r-01	GDC	43-59.59S	146-19.63E	g	WEST11MV

*** Continuous Recorded Gravity ***

0500	180395	0	GVCR	B	digital gravity	GDC	42-54.35S	147-21.66E	g	WEST11MV
2123	140495	0	GVCR	E	digital gravity	GDC	42-53.81S	147-21.59E	g	WEST11MV

*** Remote Tracked Drifter Current Meter ***

0253	300395	0	CMRT		SVP Drifter Deployed	NOAA	52-45.97S	142-19.49E	g	WEST11MV
0253	300395	0	CMRT		SVP Ser.No. 22052	NOAA	52-45.97S	142-19.49E	g	WEST11MV
0342	130495	0	CMRT		SVP Drifter Deployed	NOAA	47-20.16S	144-58.94E	g	WEST11MV
0342	130495	0	CMRT		SVP Ser.No. 22051	NOAA	47-20.16S	144-58.94E	g	WEST11MV

*** Conductivity, Temperature, Depth ***

0424	190395	0	TDCT	CTD	1 06	1300M	URI	46-13.00S	145-39.10E	g	WEST11MV
1208	260395	0	TDCT	CTD	2 05	3407M	URI	50-26.28S	144-17.69E	g	WEST11MV
1157	270395	0	TDCT	CTD	3 06	3749M	URI	51-16.14S	143-54.25E	g	WEST11MV
1753	270395	0	TDCT	CTD	4 06	3779M	URI	51-32.31S	143-46.66E	g	WEST11MV
1355	290395	0	TDCT	CTD	5 06	3561M	URI	52-05.46S	143-29.59E	g	WEST11MV
1546	310395	0	TDCT	CTD	6 06	3625M	URI	51-48.83S	143-38.00E	g	WEST11MV
1023	020495	0	TDCT	CTD	7 6	3799M	URI	49-52.96S	144-34.13E	g	WEST11MV
1741	020495	0	TDCT	CTD	8 6	3675M	URI	50-08.73S	144-27.42E	g	WEST11MV
0023	060495	0	TDCT	CTD	9	1200M	URI	50-32.05S	145-24.94E	g	WEST11MV
0244	060495	0	TDCT	CTD	10	1200M	URI	50-36.02S	145-45.06E	g	WEST11MV
0526	060495	0	TDCT	CTD	11	1200M	URI	50-39.55S	146-03.37E	g	WEST11MV
0654	060495	0	TDCT	CTD	12	1200M	URI	50-43.35S	146-21.31E	g	WEST11MV
0929	060495	0	TDCT	CTD	13	1200M	URI	50-46.74S	146-39.54E	g	WEST11MV
1151	060495	0	TDCT	CTD	14	1200M	URI	50-50.20S	146-57.66E	g	WEST11MV
1440	060495	0	TDCT	CTD	15	1200M	URI	51-08.07S	146-48.03E	g	WEST11MV
1650	060495	0	TDCT	CTD	16	1200M	URI	51-04.73S	146-29.85E	g	WEST11MV
1925	060495	0	TDCT	CTD	17	1200M	URI	51-01.37S	146-11.67E	g	WEST11MV

#GMT	DDMMYY	SAMP	B	SAMPLE	DISP				p	CRUISE	
#TIME	DATE	TZ	CODE	E IDENTIFIER	CODE	LATITUDE	LONGITUDE		c	LEG-SHIP	
#											
2146	060495	0	TDCT	CTD	18	1200M URI	50-57.75S	145-53.37E	g	WEST11MV	
0009	070495	0	TDCT	CTD	19	1200M URI	50-54.96S	145-35.99E	g	WEST11MV	
0233	070495	0	TDCT	CTD	20	1200M URI	50-50.89S	145-16.95E	g	WEST11MV	
0530	070495	0	TDCT	CTD	21	1200M URI	51-11.44S	145-17.32E	g	WEST11MV	
0749	070495	0	TDCT	CTD	22	1200M URI	51-15.03S	145-35.14E	g	WEST11MV	
1015	070495	0	TDCT	CTD	23	1200M URI	51-18.61S	145-53.39E	g	WEST11MV	
1230	070495	0	TDCT	CTD	24	1200M URI	51-20.52S	146-12.58E	g	WEST11MV	
1440	070495	0	TDCT	CTD	25	1200M URI	51-22.45S	146-31.78E	g	WEST11MV	
1656	070495	0	TDCT	CTD	26	1200M URI	51-24.75S	146-51.37E	g	WEST11MV	
1935	070495	0	TDCT	CTD	27	1200M URI	51-33.75S	147-10.89E	g	WEST11MV	
2206	070495	0	TDCT	CTD	28	1200M URI	51-34.92S	146-51.21E	g	WEST11MV	
0119	080495	0	TDCT	CTD	29	1200M URI	51-38.76S	146-33.55E	g	WEST11MV	
0329	080495	0	TDCT	CTD	30	1200M URI	51-40.05S	146-20.21E	g	WEST11MV	
0532	080495	0	TDCT	CTD	31	1200M URI	51-42.02S	146-07.78E	g	WEST11MV	
0753	080495	0	TDCT	CTD	32	1200M URI	51-44.87S	145-49.30E	g	WEST11MV	
1018	080495	0	TDCT	CTD	33	1200M URI	51-47.52S	145-30.02E	g	WEST11MV	
2343	080495	0	TDCT	CTD	34	3140M URI	52-54.24S	142-15.46E	g	WEST11MV	
0333	090495	0	TDCT	CTD	35	3584M URI	52-37.81S	142-24.04E	g	WEST11MV	
0748	090495	0	TDCT	CTD	36	3536M URI	52-21.53S	142-33.42E	g	WEST11MV	
1753	090495	0	TDCT	CTD	37	3553M URI	52-04.92S	142-42.15E	g	WEST11MV	
2210	090495	0	TDCT	CTD	38	2	3759M URI	51-48.49S	142-50.68E	g	WEST11MV
0230	100495	0	TDCT	CTD	39	3	3780M URI	51-32.14S	142-59.31E	g	WEST11MV
0907	100495	0	TDCT	CTD	40	3	3820M URI	51-15.72S	143-07.83E	g	WEST11MV
1544	100495	0	TDCT	CTD	41	3	3854M URI	51-00.08S	143-15.22E	g	WEST11MV
2155	100495	0	TDCT	CTD	42	2	3595M URI	50-42.22S	143-24.97E	g	WEST11MV
0755	110495	0	TDCT	CTD	43	3	3450M URI	50-24.84S	143-32.14E	g	WEST11MV
1259	110495	0	TDCT	CTD	44	3	3760M URI	50-09.60S	143-40.16E	g	WEST11MV
1715	110495	0	TDCT	CTD	45	3	3650M URI	49-53.15S	143-48.33E	g	WEST11MV
2135	110495	0	TDCT	CTD	46	2	3667M URI	49-36.47S	143-56.04E	g	WEST11MV
0324	120495	0	TDCT	CTD	47	3	3948M URI	49-03.37S	144-11.46E	g	WEST11MV
1025	120495	0	TDCT	CTD	48	3	4213M URI	48-30.15S	144-26.92E	g	WEST11MV
1925	120495	0	TDCT	CTD	49	3	4404M URI	47-59.96S	144-40.41E	g	WEST11MV
0041	130495	0	TDCT	CTD	50	3	4109M URI	47-34.11S	144-51.34E	g	WEST11MV
0649	130495	0	TDCT	CTD	51	3	4553M URI	47-08.31S	145-02.20E	g	WEST11MV
1208	130495	0	TDCT	CTD	52	3	3534M URI	46-42.38S	145-13.09E	g	WEST11MV
1620	130495	0	TDCT	CTD	53	3	2866M URI	46-16.49S	145-23.69E	g	WEST11MV
2139	130495	0	TDCT	CTD	54	3	2203M URI	45-37.54S	145-39.33E	g	WEST11MV
0305	140495	0	TDCT	CTD	55	3	3327M URI	44-58.63S	145-54.60E	g	WEST11MV
0836	140495	0	TDCT	CTD	56	3	2318M URI	44-19.71S	146-09.49E	g	WEST11MV
1115	140495	0	TDCT	CTD	57	3	1078M URI	44-06.78S	146-15.45E	g	WEST11MV

#GMT	DDMMYY	SAMP	B	SAMPLE	DISP				P	CRUISE
#TIME	DATE	TZ	CODE	E IDENTIFIER	CODE	LATITUDE	LONGITUDE		C	LEG-SHIP

*** Electric Field Free Vehicle ***

2100	190395	0	EFFV	B HEF-01 Drop	4065M	URI	47-20.04S	144-57.70E	g	WEST11MV
2123	140495	0	EFFV	C HEF-01		URI	42-53.00S	147-20.00E	f	WEST11MV
0422	230395	0	EFFV	B HEF-11 Drop	4262M	URI	50-54.29S	143-41.93E	g	WEST11MV
2123	140495	0	EFFV	C HEF-11		URI	42-53.00S	147-20.00E	f	WEST11MV
1201	230395	0	EFFV	B HEF-08 Drop	3749M	URI	50-37.70S	143-48.69E	g	WEST11MV
2123	140495	0	EFFV	C HEF-08		URI	42-53.00S	147-20.00E	f	WEST11MV
0848	270395	0	EFFV	B HEF-12 Drop	3761M	URI	51-10.85S	143-32.21E	g	WEST11MV
2123	140495	0	EFFV	C HEF-12		URI	42-53.00S	147-20.00E	f	WEST11MV
2317	270395	0	EFFV	B HEF-13 Drop	3611M	URI	51-28.20S	143-24.85E	g	WEST11MV
2123	140495	0	EFFV	C HEF-13		URI	42-53.00S	147-20.00E	f	WEST11MV
0237	280395	0	EFFV	B HEF-14 Drop	3579M	URI	51-44.68S	143-16.30E	g	WEST11MV
2123	140495	0	EFFV	C HEF-14		URI	42-53.00S	147-20.00E	f	WEST11MV
2258	280395	0	EFFV	B HEF-15 Drop	3785M	URI	52-00.49S	143-07.75E	g	WEST11MV
2123	140495	0	EFFV	C HEF-15		URI	42-53.00S	147-20.00E	f	WEST11MV
0200	290395	0	EFFV	B HEF-16 Drop	3497M	URI	52-17.14S	142-59.62E	g	WEST11MV
2123	140495	0	EFFV	C HEF-16		URI	42-53.00S	147-20.00E	f	WEST11MV
0554	290395	0	EFFV	B HEF-17 Drop	3530M	URI	52-34.14S	142-51.24E	g	WEST11MV
2123	140495	0	EFFV	C HEF-17		URI	42-53.00S	147-20.00E	f	WEST11MV
0015	300395	0	EFFV	B HEF-18 Drop	3004M	URI	52-50.43S	142-42.10E	g	WEST11MV
2123	140495	0	EFFV	C HEF-18		URI	42-53.00S	147-20.00E	f	WEST11MV
2250	010495	0	EFFV	B HEF-07 Drop	4221M	URI	50-21.79S	143-56.97E	g	WEST11MV
2123	140495	0	EFFV	C HEF-07		URI	42-53.00S	147-20.00E	f	WEST11MV
0235	020495	0	EFFV	B HEF-06 Drop	3858M	URI	50-05.57S	144-04.97E	g	WEST11MV
2123	140495	0	EFFV	C HEF-06		URI	42-53.00S	147-20.00E	f	WEST11MV
0522	020495	0	EFFV	B HEF-05 Drop	4171M	URI	49-48.99S	144-12.69E	g	WEST11MV
2123	140495	0	EFFV	C HEF-05		URI	42-53.00S	147-20.00E	f	WEST11MV
0711	020495	0	EFFV	B HEF-04 Drop	4229M	URI	49-32.51S	144-20.54E	g	WEST11MV
2123	140495	0	EFFV	C HEF-04		URI	42-53.00S	147-20.00E	f	WEST11MV
0040	030495	0	EFFV	B HEF-03 Drop	4213M	URI	49-16.01S	144-28.25E	g	WEST11MV
2123	140495	0	EFFV	C HEF-03		URI	42-53.00S	147-20.00E	f	WEST11MV
0315	030495	0	EFFV	B HEF-02 Drop	3947M	URI	48-59.51S	144-36.10E	g	WEST11MV
2123	140495	0	EFFV	C HEF-02		URI	42-53.00S	147-20.00E	f	WEST11MV
0615	030495	0	EFFV	B HEF-X Drop	4067M	URI	48-42.05S	144-43.86E	g	WEST03MV

#GMT	DDMMYY	SAMP	B	SAMPLE	DISP				p	CRUISE
#TIME	DATE	TZ	CODE	E IDENTIFIER	CODE	LATITUDE	LONGITUDE		c	LEG-SHIP

*** Anchored Bottom Current Meters ***

1201	220395	0	CMAB	B CM Mooring NE	3749M OSU	50-37.86S	143-47.81E	g	WEST11MV
2123	140495	0	CMAB	C CM Mooring NE	OSU	42-53.00S	147-20.00E	f	WEST11MV
0133	230395	0	CMAB	B CM Mooring E	3921M OSU	50-51.67S	144-05.11E	g	WEST11MV
2123	140495	0	CMAB	C CM Mooring E	OSU	42-53.00S	147-20.00E	f	WEST11MV
0811	230395	0	CMAB	B CM Mooring SE	4346M OSU	50-54.06S	143-41.27E	g	WEST11MV
2123	140495	0	CMAB	C CM Mooring SE	OSU	42-53.00S	147-20.00E	f	WEST11MV
0209	240395	0	CMAB	B CM Mooring N	3480M OSU	50-25.38S	143-31.14E	g	WEST11MV
2123	140495	0	CMAB	C CM Mooring N	OSU	42-53.00S	147-20.00E	f	WEST11MV
0317	250395	0	CMAB	B CM Mooring S	3897M OSU	50-59.62S	143-14.38E	g	WEST11MV
2123	140495	0	CMAB	C CM Mooring S	OSU	42-53.00S	147-20.00E	f	WEST11MV
0847	250395	0	CMAB	B CM Mooring SW	3883M OSU	50-46.58S	142-57.60E	g	WEST11MV
2123	140495	0	CMAB	C CM Mooring SW	OSU	42-53.00S	147-20.00E	f	WEST11MV
0100	260395	0	CMAB	B CM Mooring W	3818M OSU	50-33.21S	142-41.66E	g	WEST11MV
2123	140495	0	CMAB	C CM Mooring W	OSU	42-53.00S	147-20.00E	f	WEST11MV
0758	260395	0	CMAB	B CM Mooring NW	4041M OSU	50-26.53S	143-09.35E	g	WEST11MV
2123	140495	0	CMAB	C CM Mooring NW	OSU	42-53.00S	147-20.00E	f	WEST11MV
0231	270395	0	CMAB	B CM Mooring C	3636M OSU	50-42.33S	143-23.64E	g	WEST11MV
2123	140495	0	CMAB	C CM Mooring C	OSU	42-53.00S	147-20.00E	f	WEST11MV

*** Pressure Gauge Free Vehicle ***

0530	200395	0	PRFV	B P-Gauge 1 Dep.	4382M URI	47-59.95S	144-40.16E	g	WEST11MV
2123	140495	0	PRFV	C P-Gauge 1	URI	42-53.00S	147-20.00E	f	WEST11MV
0916	200395	0	PRFV	B P-Gauge 2 Dep.	4213M URI	48-30.08S	144-26.80E	g	WEST11MV
2123	140495	0	PRFV	C P-Gauge 2	URI	42-53.00S	147-20.00E	f	WEST11MV
0246	300395	0	PRFV	B P-Gauge 3 Dep.	3275M URI	52-45.97S	142-19.47E	g	WEST11MV
2123	140495	0	PRFV	C P-Gauge 3	URI	42-53.00S	147-20.00E	f	WEST11MV
1400	300395	0	PRFV	B P-Gauge 4 Dep.	2840M URI	54-32.08S	141-19.16E	g	WEST11MV
2123	140495	0	PRFV	C P-Gauge 4	URI	42-53.00S	147-20.00E	f	WEST11MV

#GMT DDMYY	SAMP B	SAMPLE	DISP					p	CRUISE
#TIME DATE	TZ	CODE E	IDENTIFIER	CODE	LATITUDE	LONGITUDE		c	LEG-SHIP

**** Acoustical Studies (Inverted Echo Sounder)****

0334	200395	0	ACXX	B	IES	1	Deploy.	4379M	URI	47-59.95S	144-40.20E	g	WEST11MV
2123	140495	0	ACXX	C	IES	1			URI	42-53.00S	147-20.00E	f	WEST11MV
0510	210395	0	ACXX	B	IES	8	Deploy.	3530M	URI	50-24.93S	143-32.03E	g	WEST11MV
2123	140495	0	ACXX	C	IES	8			URI	42-53.00S	147-20.00E	f	WEST11MV
0806	210395	0	ACXX	B	IES	6	Deploy.	3765M	URI	50-09.74S	143-39.99E	g	WEST11MV
2123	140495	0	ACXX	C	IES	6			URI	42-53.00S	147-20.00E	f	WEST11MV
1108	210395	0	ACXX	B	IES	4	Deploy.	3764M	URI	49-53.14S	143-48.06E	g	WEST11MV
2123	140495	0	ACXX	C	IES	4			URI	42-53.00S	147-20.00E	f	WEST11MV
1407	210395	0	ACXX	B	IES	2	Deploy.	3769M	URI	49-36.56S	143-55.82E	g	WEST11MV
2123	140495	0	ACXX	C	IES	2			URI	42-53.00S	147-20.00E	f	WEST11MV
1909	210395	0	ACXX	B	IES	3	Deploy.	4009M	URI	49-53.16S	144-33.66E	g	WEST11MV
2123	140495	0	ACXX	C	IES	3			URI	42-53.00S	147-20.00E	f	WEST11MV
1606	220395	0	ACXX	B	IES	5	Deploy.	3713M	URI	50-08.87S	144-27.03E	g	WEST11MV
2123	140495	0	ACXX	C	IES	5			URI	42-53.00S	147-20.00E	f	WEST11MV
1422	230395	0	ACXX	B	IES	7	Deploy.	3422M	URI	50-26.28S	144-17.73E	g	WEST11MV
2123	140495	0	ACXX	C	IES	7			URI	42-53.00S	147-20.00E	f	WEST11MV
0828	240395	0	ACXX	B	IES	11	Deploy.	3775M	URI	51-15.87S	143-54.34E	g	WEST11MV
2123	140495	0	ACXX	C	IES	11			URI	42-53.00S	147-20.00E	f	WEST11MV
1206	240395	0	ACXX	B	IES	13	Deploy.	3780M	URI	51-32.35S	143-46.56E	g	WEST11MV
2123	140495	0	ACXX	C	IES	13			URI	42-53.00S	147-20.00E	f	WEST11MV
1608	240395	0	ACXX	B	IES	15	Deploy.	3500M	URI	51-48.89S	143-37.91E	g	WEST11MV
2123	140495	0	ACXX	C	IES	15			URI	42-53.00S	147-20.00E	f	WEST11MV
1106	250395	0	ACXX	B	IES	10	Deploy.	3841M	URI	51-00.15S	143-15.09E	g	WEST11MV
2123	140495	0	ACXX	C	IES	10			URI	42-53.00S	147-20.00E	f	WEST11MV
1406	250395	0	ACXX	B	IES	12	Deploy.	3859M	URI	51-15.73S	143-07.51E	g	WEST11MV
2123	140495	0	ACXX	C	IES	12			URI	42-53.00S	147-20.00E	f	WEST11MV
0406	270395	0	ACXX	B	IES	9	Deploy.	3608M	URI	50-42.31S	143-24.17E	g	WEST11MV
2123	140495	0	ACXX	C	IES	9			URI	42-53.00S	147-20.00E	f	WEST11MV
0828	280395	0	ACXX	B	IES	17	Deploy.	3580M	URI	52-05.44S	143-29.47E	g	WEST11MV
2123	140495	0	ACXX	C	IES	17			URI	42-53.00S	147-20.00E	f	WEST11MV
1409	280395	0	ACXX	B	IES	14	Deploy.	3765M	URI	51-32.08S	142-59.09E	g	WEST11MV
2123	140495	0	ACXX	C	IES	14			URI	42-53.00S	147-20.00E	f	WEST11MV
1807	280395	0	ACXX	B	IES	16	Deploy.	3761M	URI	51-48.63S	142-50.57E	g	WEST11MV
2123	140495	0	ACXX	C	IES	16			URI	42-53.00S	147-20.00E	f	WEST11MV
0923	290395	0	ACXX	B	IES	18	Deploy.	3580M	URI	52-04.99S	142-41.92E	g	WEST11MV
2123	140495	0	ACXX	C	IES	18			URI	42-53.00S	147-20.00E	f	WEST11MV

#

End Sample Index

WEST11MV