

Agisoft PhotoScan

Processing Report
01 November 2014



Survey Data

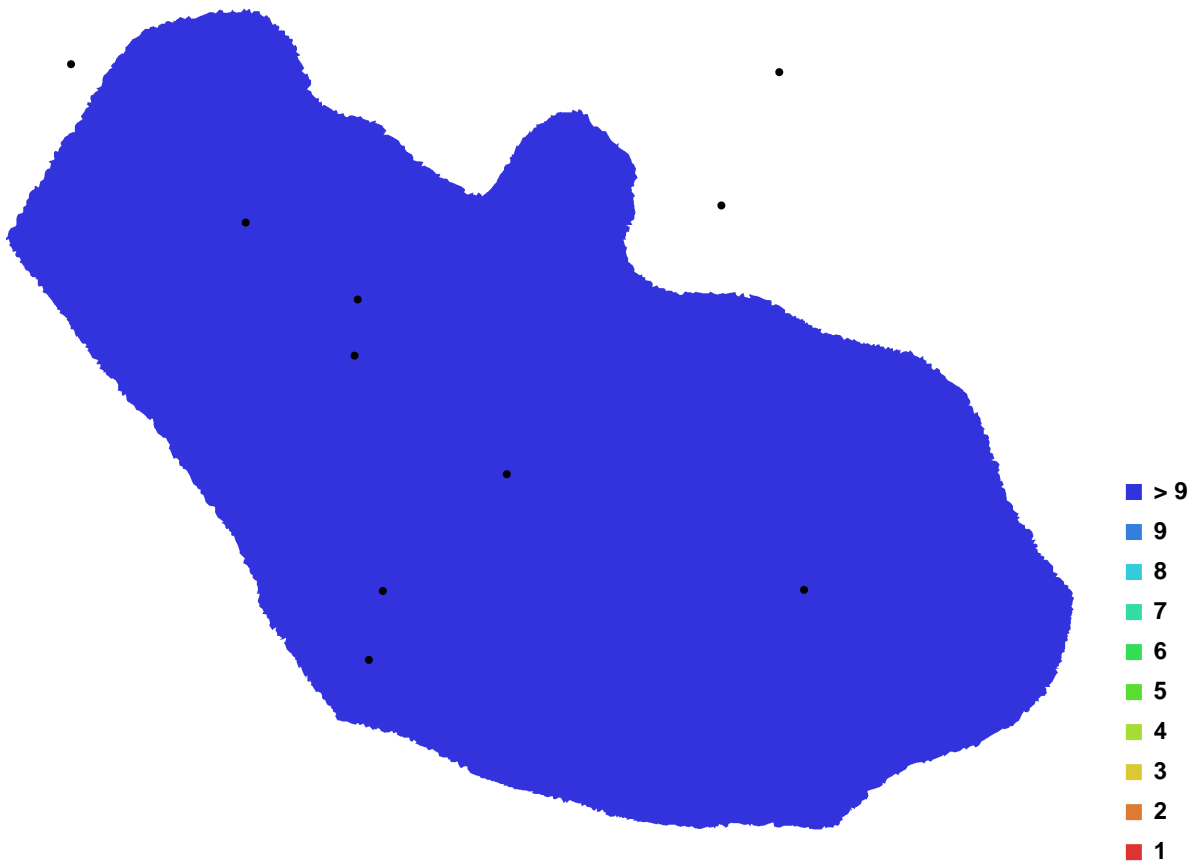


Fig. 1. Camera locations and image overlap.

Number of images:	33	Camera stations:	33
Flying altitude:	1.19154 m	Tie-points:	110643
Ground resolution:	0.000129137 m/pix	Projections:	278953
Coverage area:	1.143e-007 sq km	Error:	0.769925 pix

Camera Model	Resolution	Focal Length	Pixel Size	Precalibrated
Canon EOS M (18 mm)	5184 x 3456	18 mm	4.384 x 4.384 um	No

Table. 1. Cameras.

Digital Elevation Model

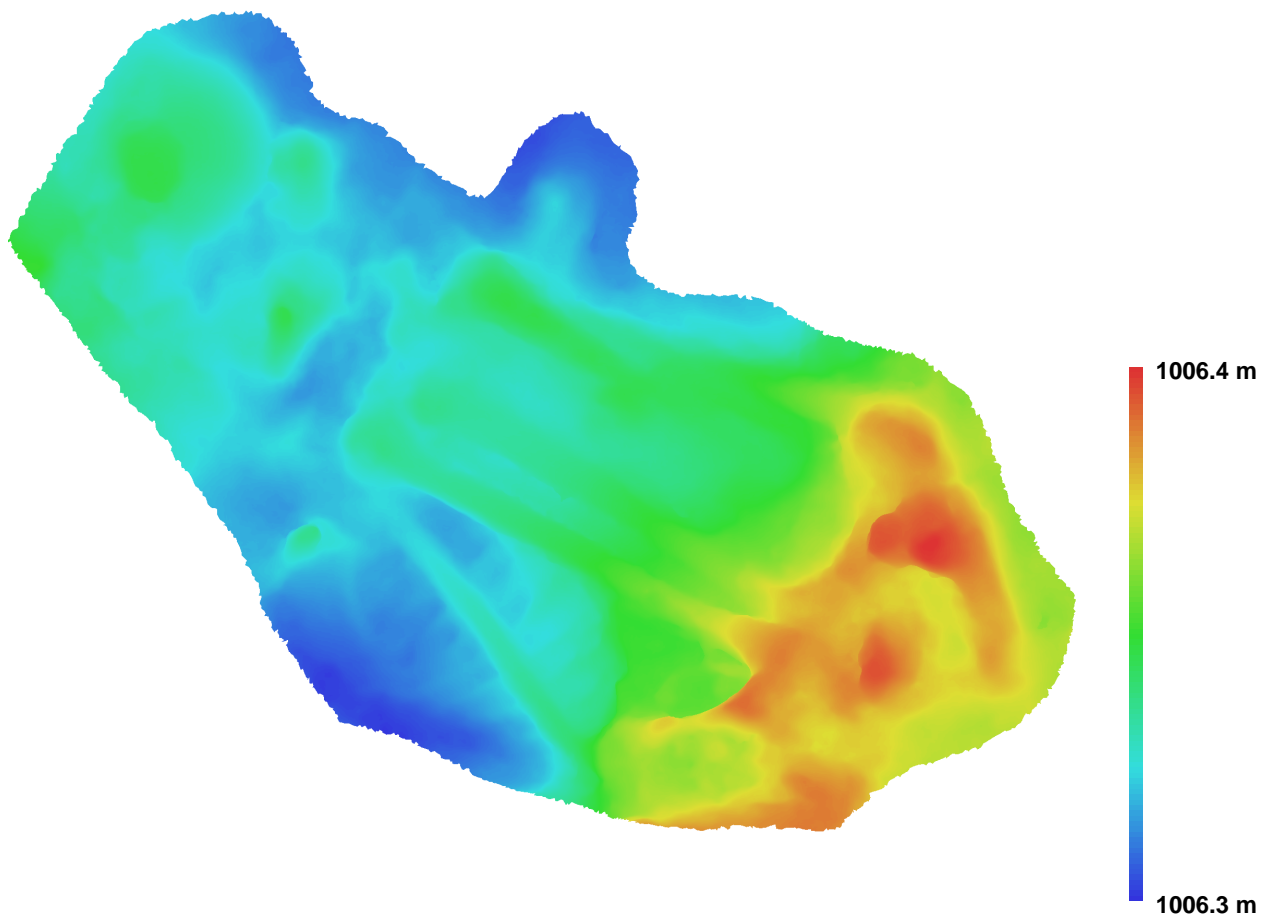


Fig. 2. Reconstructed digital elevation model.

Resolution: 0.000516547 m/pix
Point density: 3.74783e+006 points per sq m