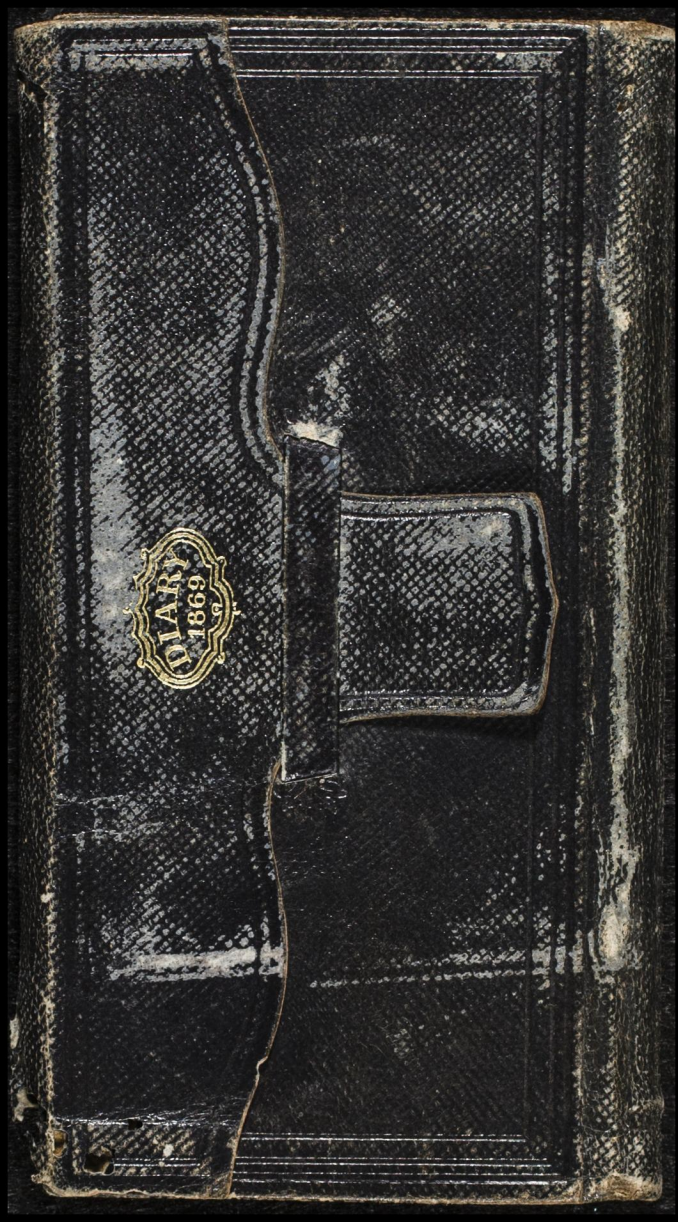


DIARY
1869



E. W. Morse

BANCROFT'S

DIARY

FOR

1869,

CONTAINING

Useful Memoranda,

AND

TABLES FOR REFERENCE.

Published Annually.

SAN FRANCISCO:
BANCROFT & COMPANY,
BOOKSELLERS & STATIONERS.

MDCCLXIX.

CALENDAR

1869.

CONTENTS.

	PAGE
Counting-House Calendar.....	3
Festivals and Fasts of the Church.....	4
Hebrew Calendar.....	5
Locations of Public Offices, Buildings, and Churches, in San Francisco.....	6
San Francisco Fire Alarm Stations.....	14
Hack Fare in San Francisco.....	15
Distances from San Francisco.....	16
California State Stamp Tax.....	17
Note to Tides at San Francisco.....	17
United States Stamp Duties.....	18
Temperature of Various Localities.....	23
Important Epochs and Eras.....	23
Weights and Measures.....	24
Specific Gravity of Substances.....	25
The Metric System.....	26
Value of Foreign Coins.....	27
Rates of Postage.....	29
The Solar System.....	30
Time Table.....	31
Chronological Cycles.....	31
Eclipses.....	32
List of Sundays in 1869.....	32
Almanac.....	33

JANUARY.							JULY.						
Su.	Mo.	Tu.	We.	Th.	Fr.	Sa.	Su.	Mo.	Tu.	We.	Th.	Fr.	Sa.
..	1	2	1	2	3
3	4	5	6	7	8	9	4	5	6	7	8	9	10
10	11	12	13	14	15	16	11	12	13	14	15	16	17
17	18	19	20	21	22	23	18	19	20	21	22	23	24
24	25	26	27	28	29	30	25	26	27	28	29	30	31
31

FEBRUARY.							AUGUST.						
Su.	Mo.	Tu.	We.	Th.	Fr.	Sa.	Su.	Mo.	Tu.	We.	Th.	Fr.	Sa.
..	1	2	3	4	5	6	1	2	3	4	5	6	7
7	8	9	10	11	12	13	8	9	10	11	12	13	14
14	15	16	17	18	19	20	15	16	17	18	19	20	21
21	22	23	24	25	26	27	22	23	24	25	26	27	28
28	29	30	31

MARCH.							SEPTEMBER.						
Su.	Mo.	Tu.	We.	Th.	Fr.	Sa.	Su.	Mo.	Tu.	We.	Th.	Fr.	Sa.
..	1	2	3	4	5	6	1	2	3	4
7	8	9	10	11	12	13	5	6	7	8	9	10	11
14	15	16	17	18	19	20	12	13	14	15	16	17	18
21	22	23	24	25	26	27	19	20	21	22	23	24	25
28	29	30	31	26	27	28	29	30

APRIL.							OCTOBER.						
Su.	Mo.	Tu.	We.	Th.	Fr.	Sa.	Su.	Mo.	Tu.	We.	Th.	Fr.	Sa.
..	1	2	3	3	4	5	6	7	8	9
4	5	6	7	8	9	10	10	11	12	13	14	15	16
11	12	13	14	15	16	17	17	18	19	20	21	22	23
18	19	20	21	22	23	24	24	25	26	27	28	29	30
25	26	27	28	29	30	..	31

MAY.							NOVEMBER.						
Su.	Mo.	Tu.	We.	Th.	Fr.	Sa.	Su.	Mo.	Tu.	We.	Th.	Fr.	Sa.
..	1
2	3	4	5	6	7	8	..	1	2	3	4	5	6
9	10	11	12	13	14	15	7	8	9	10	11	12	13
16	17	18	19	20	21	22	14	15	16	17	18	19	20
23	24	25	26	27	28	29	21	22	23	24	25	26	27
30	31	28	29	30

JUNE.							DECEMBER.						
Su.	Mo.	Tu.	We.	Th.	Fr.	Sa.	Su.	Mo.	Tu.	We.	Th.	Fr.	Sa.
..
..	1	2	3	4	5	6	1	2	3	4
6	7	8	9	10	11	12	5	6	7	8	9	10	11
13	14	15	16	17	18	19	12	13	14	15	16	17	18
20	21	22	23	24	25	26	19	20	21	22	23	24	25
27	28	29	30	26	27	28	29	30	31	..

Entered according to Act of Congress, A. D. 1868,
By BANCROFT & COMPANY,
in the Clerk's office of the District Court of the United States for
the District of California.

FESTIVALS AND FASTS OF THE CHURCH.

Dates italicized apply only to 1869.

EPIPHANY is twelve days after Christmas, January 6th.
SHROVE SUNDAY, the first Sunday before Shrove Tuesday.— *February 7th.*

SHROVE TUESDAY is the first Tuesday after the first change of the moon in February.— *February 9th.*

ASH WEDNESDAY, the day after Shrove Tuesday.— *February 10th.*

The Fast of LENT is from Ash Wednesday to the feast of Easter, forty days.

The FIRST SUNDAY IN LENT is *February 14th.*

MIDLENT is the fourth Sunday from Shrove Tuesday.— *March 7th.*

CARLE SUNDAY, the fifth Sunday from Shrove Tuesday.— *March 14th.*

ST. PATRICK.— *March 17th.*

PALM SUNDAY, the 6th Sunday from Shrove Tuesday.— *March 21st.*

PASSION WEEK, the week after Palm Sunday.— *March 21st to March 28th.*

GOOD FRIDAY, the Friday in Passion Week.— *March 26th.*

EASTER DAY, the festival appointed in commemoration of Christ's Resurrection, is the seventh Sunday after Shrove Tuesday, or the first after the full moon, which happens on or after the 21st of March.— *March 28th.*

LOW SUNDAY is the first after Easter.— *April 4th.*

ROGATION SUNDAY is the fifth after Easter.— *May 2d.*

ASCENSION DAY, or HOLY THURSDAY, is the Thursday in Rogation Week, the fortieth day from Easter.— *May 6th.*

PENTECOST, or WHITSUNTIDE, is the forty-ninth day, or seventh Sunday after Easter.— *May 16th.*

TRINITY SUNDAY is the next after Pentecost.— *May 23d.*

ST. JOHN BAPTIST'S DAY.— *June 24th.*

ST. PETER.— *June 29th.*

ST. MICHAEL.— *September 29th.*

ALL SAINTS' DAY.— *November 1st.*

ADVENT SUNDAY, the nearest Sunday to the feast of St. Andrew.— *November 28th.*

ST. ANDREW.— *November 30th.*

ST. THOMAS.— *December 21st.*

CHRISTMAS.— *December 25th.*

ST. STEPHEN.— *December 26th.*

ST. JOHN, EVANGELIST.— *December 27th.*

HEBREW CALENDAR.

5629-5630.

[Prepared by Rev. Dr. H. A. Henry.]

COMMENCEMENT { 5629, SEPTEMBER 17-18, 1868.
OF THE YEAR { 5630, SEPTEMBER 6-7, 1869.

NEW MOONS.	FASTS AND FEASTS.	DATES.
5629.		1869.
<i>Shebat</i>		We. Jan. 13
<i>Adar</i>	Th. & Fri.,	Feb. 11-12
<i>Adar</i> , 13.....	Fast of Esther.....	We., Feb. 24
<i>Adar</i> , 14-15....	Purim.....	Th. & Fri., Feb. 25-26
<i>Neson</i>		Sat., March 13
<i>Neson</i> , 15-22..	Pesach.....	Sat. to Sat., Mar. 27 to Apr. 3
<i>Iyar</i>		Su. & Mo., April 11-12
<i>Iyar</i> , 18.....	Lag Laomer.....	Th., Apr. 29
<i>Sivan</i>		Tu., May 11
<i>Sivan</i> , 6-7....	Shebuoth.....	Su. & Mo., May 16-17
<i>Tammooz</i>		We. & Th., June 9-10
<i>Tammooz</i> , 17.	Fast.....	Sun., June 27
<i>Ab</i>		Fri., July 9
<i>Ab</i> , 9.....	Tishabeab—Fast.....	Sun., July 18
<i>Ellool</i>		Sat. & Sun., Aug. 7-8
5630.		
<i>Tishree</i> , 1-2..	New Year.....	Mo. & Tu., Sept. 6-7
<i>Tishree</i> , 3....	Fast of Gedaliah.....	We., Sept. 8
<i>Tishree</i> , 10....	Kippur—Fast.....	We., Sept. 15
<i>Tishree</i> , 15-16.	Tabernacles.....	Mo. & Tu., Sept. 20-21
<i>Tishree</i> , 21....	Hoshaanah Rabbah.....	Sun., Sept. 26
<i>Tishree</i> , 22....	Shemene Atzareth.....	Mo., Sept. 27
<i>Tishree</i> , 23....	Simchath Torah.....	Tu., Sept. 28
<i>Heshwan</i>		Tu. & We., Oct. 5-6
<i>Kisive</i>		Th. & Fri., Nov. 4-5
<i>Kisive</i> , 25....	Hanucha, (first day),.....	Mo., Nov. 29
<i>Tebet</i>		Sat. & Su., Dec. 4-5
<i>Tebet</i> , 10....	Fast.....	Tu., Dec. 14

LOCATIONS
OF
Public Offices and Buildings
IN
SAN FRANCISCO.

ACADEMY OF NATURAL SCIENCES, 622 Clay street.
ALMADEN QUICKSILVER Co., Office, 207 Battery street.
ARMY HEADQUARTERS, 742 Washington and 204 Sutter's sts.
ASSAY OFFICES:

J. A. Bauer, 644 Washington street.
Falkenau & Hanks, 623 Montgomery street.
Goldsmith Brothers, 422 Montgomery street.
H. G. Hanks, 622 Clay street.
Hentsch & Berton, cor. Clay and Leidesdorff streets.
D. T. Hughes, 423 Washington street.
A. P. Mollitor, 611 Commercial street.
Pacific Gold and Silver Refinery, 334 Montgomery st.
Riehn, Hemme & Co., 432 Montgomery street.
G. E. Rogers, 512 California street.
S. F. Assaying and Refining Works, 416 Montgom'y st.
B. B. Thayer, State Assayer, S. E. cor. Montgomery and Bush streets.

ASYLUMS:

Protestant Orphan, near Market street R. R.
R. Catholic Orphan, Market st., bet. Second and Third.
State Deaf, Dumb, and Blind, cor. Mission and 15th sts.
Magdalen, San Bruno Road.

BANKS:

Bank of British Columbia, c. Cal. and Sansome streets.
Bank of British North America, 413 California street.
Bank of California, cor. California and Sansome sts.
Banks & Co., S.W. c. Montgomery and Commercial sts.
Belloc Freres, 535 Clay street.
A. Borel, cor. Montgomery and Jackson sts.
B. Davidson & Co., N. W. cor. Montgomery and Com'l.
Donohoe, Kelly & Co., S.E. cor. Montgomery and Sacramento streets.
Grain & Menzies, 413 California street.
Abel Guy, 411 Washington street.
Hentsch & Berton, cor. Clay and Leidesdorff streets.
Hickox & Spear, 500 Montgomery street.
London and San Francisco Bank, 412 Montgomery st.
Luning & Co., 215 Front street.

LOCATIONS OF PUBLIC OFFICES, ETC.

BANKS, (continued.)

Pacific Bank, 400 Montgomery street.
Parrott & Co., N.W. c. Montgomery & Sacramento sts.
Sather & Co., N.E. c. Montgomery and Commercial sts.
John Sime & Co., N.W. cor. Montgomery and Clay sts.
Tallant & Co., 321 Battery street.
Wells, Fargo & Co., N.W. c. M'tgomery & California sts.
BIBLE DEPOSITORY, 757 Market street.

BOARDS OF BROKERS, San Francisco Stock and Exchange,
New Merchants' Exchange, California street.

San Francisco Long Room, New Merchants' Exchange.
BOARD OF EDUCATION, 22 City Hall, 2nd floor, op. the Plaza.
BOARD OF SUPERVISORS, Room 3 City Hall, op. the Plaza.
CALIFORNIA STEAM NAVIGATION Co., N. E. cor. Front and Jackson streets.

CHAMBER OF COMMERCE, New Merchants' Exchange, cor.
California and Leidesdorff sts.

CHINA AND JAPAN STEAMERS, N. W. cor. Sacramento and Leidesdorff sts.

CHURCHES:

Baptist, First, north side Washington st., n. Stockton.
Baptist, Second, Fifth st., bet. Market and Mission sts.
Baptist, Third, (colored), cor. Jane and Natoma sts.
Baptist Tabernacle, Post street, near Larkin.
Baptist, Union Square, Post street, near Powell.
Chinese Mission House, N. E. cor. Sacramento and Stockton streets.
Congregationalist, First, S. W. cor. California and Dupont streets.
Congregationalist, Second, Taylor street, near Geary.
Congregationalist, Third, Fifteenth st., near Mission.
Congregationalist, Fourth, S. side Green, near Stockton street.
Disciples, Church of Christ, 318 Post street.
Episcopal, Grace, S.E. cor. California and Stockton sts.
Episcopal, Trinity, N. E. cor. Post and Powell sts.
Episcopal, St. John's, Mission Dolores.
Episcopal, Advent, Howard st., bet. Second and Third.
Episcopal, St. James', Post street, near Mason.
Episcopal, Church of the Nativity, cor. Polk and Pacific sts.
Friends of Progress, Mechanics' Institute, 29 Post st.
Hebrew, Sherith Israel, east side Stockton street, bet. Broadway and Vallejo street.
Hebrew, Emanu El, Sutter, bet. Stock't'n and Powell sts.

CHURCHES, (continued.)

- Hebrew, Ohabei Shalome, Mason, b. Geary and Post sts.
 Hebrew, Beth Israel, Sutter street, near Stockton.
 Lutheran, German, 245 Stevenson street.
 Lutheran, St. Paul's, German, Dashaway Hall, Post st.
 Lutheran, St. Mark's, German, south side of Geary street, bet. Stockton and Powell.
 Lutheran, Swedish, 320 Sansome street.
 Mariner's Church, cor. Sacramento and Drumm sts.
 Mariner's Church, German, Mission st., bet. Second and Third.
 Methodist Episcopal, Powell Street, west side Powell street, bet. Washington and Jackson.
 Methodist, Howard Street, Howard street, bet. Second and Third.
 Methodist, Central, cor. Sixth and Mission streets.
 Methodist, Mission St., Mission st., oppo. the Willows.
 Methodist, Seaman's Bethel, Mission street, bet. First and Second sts.
 Methodist, Minna St., Minna st., bet. Fourth and Fifth.
 Methodist, Kentucky St., on the Potrero, nr. L. Bridge.
 Methodist, Bernal Wesleyan, Prospect Avenue, Bernal Heights.
 Methodist, German, Folsom st., b. Fourth and Fifth.
 Methodist, German, north side Broadway, bet. Stockton and Powell sts.
 Methodist, African (colored), west side Powell, bet. Jackson and Pacific streets.
 Methodist, Zion Wesleyan, (colored), Stockton st., near Sacramento.
 Presbyterian, First, Stockton street, near Clay.
 Presbyterian, Calvary, cor. Geary and Powell sts.
 Presbyterian, Howard, S. side Mission st., near Third.
 Presbyterian, Larkin Street, c. Larkin and Pacific sts.
 Presbyterian, Central, Mission st., bet. Fifth and Sixth.
 Presbyterian, Folsom St., cor. Folsom and Seventh sts.
 Presbyterian, Westminster, Hayes st., Hayes Valley.
 Presbyterian, United, 727 Market street.
 Reformed Protestant Dutch, 629 California street.
 Roman Catholic, St. Mary's Cathedral, N.E. c. California and Dupont sts.
 Roman Catholic, St. Francis, Vallejo street, bet. Dupont and Stockton sts.
 Roman Catholic, St. Patrick's, south side Market, bet. Second and Third streets.

LOCATIONS OF PUBLIC OFFICES, ETC.

CHURCHES, (continued.)

- Roman Catholic, St. Boniface, (German,) north side Sutter, between Montgomery and Kearney streets.
 Roman Catholic, St. Ignatius, Market, bet. Fourth and Fifth streets.
 Roman Catholic, Notre Dame, (French), Bush, between Dupont and Stockton streets.
 Roman Catholic, Mission Dolores, S.W. cor. Sixteenth and Dolores sts.
 Roman Catholic, St. Joseph's, Tenth street, bet. Folsom and Howard sts.
 Roman Catholic, St. Rose's, Bryant street.
 Roman Catholic, St. Bridget's, S. W. cor. Van Ness Avenue and Broadway.
 Swedenborgian, New Jerusalem, O'Farrell street, bet. Mason and Taylor.
 Unitarian, First, Geary street, near Stockton.
 CITY HALL, Kearney street, opposite the Plaza.
 COAST SURVEY, Custom House, 3d floor, N.W. cor. Battery and Washington streets.
 COMMISSIONER OF IMMIGRATION, N. E. cor. Washington and Battery sts.
 COURTS :
 Federal, U. S. Court Building, N. E. cor. Washington and Battery sts.
 District, County, and Probate, City Hall, op. the Plaza.
 Justices of the Peace, N. E. cor. Jackson and Montgomery sts., 2d floor.
 CUSTOM HOUSE, N.W. cor. Battery and Washington streets.
 DASHAWAY HALL, Post street, near Dupont.
 EXPRESSES :
 Alameda Co., Wheeler & Co., Pacific Fruit Market, Clay street.
 Brooklyn, Webster & Cadwell, Pacific Fruit Market.
 City and Hayes Valley, J. Tyson, 500 Sansom.
 City Letter, S. E. cor. Washington and Sansom streets.
 Contra Costa, Bamber & Co., c. Davis and Jackson sts.
 Half Moon Bay and Pescadero, Kennedy & Co., 679 Market st.
 Mission Dolores, H. S. Dorland, c. Battery and Clay sts.
 Olima, Henderson & Look, S. E. cor. Washington and Sansom sts.
 S. F. & San Jose, Truman & Co., N. E. cor. Washington and Battery sts.
 San Leandro, Bryant & Shuey, 319 Washington st.

EXPRESSES, (*continued.*)

San Rafael, W. L. Barnard, S. E. cor. Washington and Sansom sts.

Wells, Fargo & Co., N. W. cor. California and Montgomery sts.

GAS COMPANIES:

San Francisco, Office, S. E. cor. First and Natoma sts. Citizens, 702 Washington, near Kearney street.

HARBOR COMMISSIONERS, 302 Montgomery street.

HOSPITALS:

Alms House, vicinity of Lake Honda.

British, 522 Market street.

County, S. W. cor. Francisco and Stockton streets.

French Mutual Benevolent Society, Brannan st., bet. Fifth and Sixth.

German, Brannan street, near Third.

Italian Benevolent Society, at St. Mary's Hospital.

Marine, Rincon Point, bet. Main and Spear streets.

St. Mary's Sisters of Mercy, cor. Bryant and First sts.

INDIAN AGENT, Southern District, S. E. cor. Washington and Sansom streets.

INDUSTRIAL SCHOOL, Office, City Hall, No. 9, third floor.

INTERNAL REVENUE, N. W. cor. Washington and Custom House Place.

LADIES' PROTECTION AND RELIEF SOCIETY, Franklin Avenue, between Post and Geary streets.

LAND OFFICE, 729 Montgomery street.

LIBRARIES:

Mercantile, N. side Bush street, near Montgomery.

Odd Fellows, 327 Montgomery near California street.

Mechanics Institute, 636 Market st. and 27 Post st.

MARSHAL, U. S., 13 and 14 U. S. Court Building, N. E. cor. Washington and Battery streets.

MASONIC HALL, cor. Montgomery and Post streets.

MECHANICS' INSTITUTE, 27 Post street.

MERCHANTS' EXCHANGE, south side California street, near Montgomery.

MEXICAN STEAMSHIP LINE, Office, 426 California street.

MINT, U. S. Branch, north side Commercial street, near Montgomery.

NEWSPAPER AND PERIODICAL OFFICES:

Abend Post, (German,) 521 Clay street.

Alta California, 529 California street.

Banner of Progress, 522 Clay street.

Cal. China Mail and Flying Dragon, 528 Clay street.

NEWSPAPER AND PERIODICAL OFFICES, (*continued.*)

California Christian Advocate, 711 Mission street.

California Demokrat, (German,) N. W. cor. Sacramento and Kearney sts.

California Farmer, 320 Clay street.

California Police Gazette, 525 Front street.

California Teacher, 302 Montgomery street.

Californian, 532 Merchant street.

Commercial Herald, 409 Washington street.

Commercial Record, 517 Clay street.

Courrier de San Francisco, (French,) Jackson st., near Montgomery.

Dramatic Chronicle, 606 Montgomery street.

El Nuevo Mundo, (Spanish,) 533 Commercial st.

Elevator, corner Sansom and Jackson sts.

Evangel, 528 Clay street.

Evening Bulletin, 622 Montgomery street.

Evening Dispatch, 517 Clay street.

Examiner, 535 Washington street.

Golden City, 522 Montgomery street.

Golden Era, 543 Clay street.

Guide, 517 Clay street.

Hebrew, 540 Clay street.

Hebrew Observer, 502 Montgomery street.

Howard Quarterly, 417 Clay street.

La Voz de Chile, 728 Montgomery street.

L' Eco Della Patria, (Spanish,) 415 Washington st.

Le National, (French,) 533 Commercial street.

Mercury, 420 Montgomery street.

Mining and Scientific Press, 505 Clay street.

Monitor, 622 Clay street.

Morning Call, 612 Commercial street.

New Age, 325 Montgomery street.

Occident, 609 Montgomery street.

Occidental and Vanguard, 625 Merchant street.

Our Mutual Friend, 412 Commercial street.

Pacific, N. E. cor. Front and Clay streets.

Pacific Appeal, 541 Merchant street.

Pacific Churchman, 4 Clay Avenue.

Pacific Gospel Herald, 402 Washington street.

Pacific Hygienist, N. E. cor. Montgomery and Sac. sts.

Pacific Medical and Surgical Journal, 609 Montgomery street.

Pacific Musical Gazette, 423 Montgomery st.

Real Estate Circular, 610 Merchant street.

NEWSPAPER AND PERIODICAL OFFICES, (*continued.*)

San Francisco News Letter, 528 Clay street.
 Social Voices, 708 Kearney street.
 Spare Hour, 505 Clay street.
 Spectator, 710 Washington street.
 Spirit of the Times, corner Sansom and Jackson sts.
 Stock Circular, corner Battery and Clay streets.
 Times, 386 Montgomery street.
 World's Crisis, N. E. cor. Washington and Kearny sts.

NICARAGUA OPPOSITION TRANSIT COMPANY, N.W. c. Battery and Pine streets.

ODD FELLOWS HALL, S.W. c. Montgomery and California sts.

OLYMPIC CLUB, Rooms, 25 Sutter street, near Montgomery.

OREGON STEAMSHIP LINE, Office, 426 California street.

OVERLAND MAIL COMPANY, N. W. cor. Montgomery and California streets.

PACIFIC MAIL STEAMSHIP COMPANY, N. W. cor. Sacramento and Leidesdorff sts.

PIONEER'S HALL, 808 Montgomery street, cor. Gold.

POLICE OFFICE, City Hall, opposite the Plaza.

POST OFFICE, Custom House, N.W. cor. Battery and Washington streets.

RAILROAD COMPANIES :

Central, Office, east side Taylor street, between Turk and Eddy.

Central Pacific, N. E. cor. California and Front sts.

City, Office, 520 Kearney street.

Front Street, Mission, and Ocean, Office, cor. Broadway and Polk sts.

Market Street and Mission Dolores, cor. Market and Valencia sts.

North Beach and Mission, Fourth street, near Bryant, cor. Louisa.

Omnibus Railroad, Howard street, near Third.

Potrero and Bay View, Office, 627 Sacramento street.

San Francisco and Alameda, Office, S. W. cor. Davis and Jackson sts.

San Francisco and Oakland, Office, S. W. cor. Davis and Jackson st.

San Francisco and San Jose, N. E. cor. Montgomery and Market streets.

RECORDER'S OFFICE, City Hall, opposite the Plaza.

REGISTRAR IN BANKRUPTCY, 10 Court Block, 636 Clay street.

SAVINGS BANKS :

California Building, Loan and Savings, 405 Cal. street.

LOCATIONS OF PUBLIC OFFICES, ETC.

SAVINGS BANKS, (*continued.*)

Farmers' and Mechanics' Bank of Savings, 223 Sansom st.

French Savings and Loan Mutual, 533 Commercial st.

Hibernia Savings and Loan, N. E. cor. Montgomery and Market streets.

Odd Fellows' Savings and Loan, S.W. cor. Montgomery and California sts.

San Francisco Savings Union, 513 California street.

Savings and Loan Society, 619 Clay street.

STATE GEOLOGIST, 90 Montgomery Block.

STEAMBOAT LANDINGS, Broadway Street Wharf.

STEAMER (Ocean) LANDINGS, cor. First and Bryant streets.

SURVEYOR GENERAL'S OFFICE, U. S., Pioneer Hall, cor. Montgomery and Gold.

TELEGRAPH OFFICE, 507 Montgomery street.

UNION HALL, Howard street, near Third.

UNITED STATES SUB-TREASURY, 428 Montgomery street.

WATER WORKS, Spring Valley, 516 California street.

YOUNG MEN'S CHRISTIAN ASSOCIATION, 526 California street, bet. Montgomery and Kearney.

SAN FRANCISCO

FIRE ALARM STATIONS.

FIRE ALARM BOXES are located at the corners of the following streets:

- | | |
|---------------------------------------|--|
| 1. Stockton and Francisco. | 42. Geary, near Mason. |
| 2. Mason and Lombard. | 43. O'Farrell, near Dupont. |
| 3. Stockton and Greenw'h. | 45. Hyde and O'Farrell. |
| 4. Sansome and Greenw'h. | 46. Jones and Turk. |
| 5. Battery and Union. | 47. Market and Powell. |
| 6. Jones and Filbert. | 48. Geary and Kearney. |
| 7. Union and Hyde. | 49. Mission and Steuart. |
| 8. Powell and Union. | 51. Folsom and Spear. |
| 9. Dupont and Green. | 52. Mission and Fremont. |
| 12. California and Kearney. | 53. Folsom and First. |
| 13. Front and Broadway. | 54. Second, near Howard. |
| 14. Stockton and Broadw'y. | 56. Harrison and Second. |
| 15. Leavenw'ith and Pacific. | 57. Brannan and Second. |
| 16. Mason and Pacific. | 58. Townsend and Third. |
| 17. Kearney and Pacific. | 59. Third and Bryant. |
| 18. Sansome and Jackson. | 61. Howard and Third. |
| 19. Davis and Washington. | 62. Fourth and Everett. |
| 21. City Hall. | 63. Harrison and Fourth. |
| 23. Taylor and Clay. | 64. Howard and Fifth. |
| 24. Powell and Clay. | 65. Mission and Sixth. |
| 25. Dupont and Clay. | 67. Sixth, near Folsom. |
| 26. Battery and Clay. | 68. Harrison and Seventh. |
| 27. Montgomery and Commercial. | 69. Howard and Eighth. |
| 28. Leavenworth and Sacramento. | 71. Mission and Eleventh. |
| 29. Stockton and California. | 72. Mission and Thirteenth. |
| 31. California, n. Sansome. | 73. Folsom and Sixteenth. |
| 32. Drum and California. | 74. Eng. House No. 13, 16th. |
| 34. Mason and Pine. | 75. Kearney and Union. |
| 35. Hyde and Bush. | 76. Montgomery and Green. |
| 36. Bush, between Dupont and Kearney. | 78. Folsom and Eleventh. |
| 37. Market and Battery. | 79. Polk and Broadway. |
| 38. Montgom'y and Sutter. | 81. Hayes and Franklin. |
| 39. Stockton and Sutter. | 82. Pioneer Woolen Mills, North Beach. |
| 41. Sutter, near Jones. | 83. Brannan and Eighth. |
| | 84. Market and Valencia. |
| | 85. P. M. S. S. Co's Wharf. |

HACK FARE IN SAN FRANCISCO.

ORDER No. 285, amending Section 4 of Order No. 43, regulating Hacks, Cabs, and other Vehicles in Public Streets.

RATES OF FARE.

For a Hack for one person, not exceeding one mile.	\$ 1 50
For a Hack for two or more persons, not exceeding one mile	2 50
For each additional mile, for each passenger.....	50
For a Cab for one person, not exceeding one mile ..	1 00
For a Cab for two or more persons, not exceeding one mile	1 50
For each passenger for each additional mile.....	25
For a Cab for two persons, when engaged by the hour, to be computed for the time occupied in going and returning, including detention, for the first hour.....	1 50
For each subsequent hour so used.....	1 00
For a Hack for four or less persons, when engaged by the hour, to be computed for the time occupied in going and returning, including detention, for the first hour.....	3 00
For each subsequent hour so used	2 00

No extra charge to any passenger shall be made for the ordinary amount of baggage.

SEC. 5 OF ORDER 43.—“From the landing of any steamboat to any point east of the west line of Mason street, and north of the south line of Brannan street east of Third street, shall in all cases be estimated not to exceed one mile.”

The penalty for the violation of any of the provisions of the above Order shall not be less than five dollars, nor more than ten dollars for each offence, exclusive of costs.

DISTANCES FROM SAN FRANCISCO

To various points in the vicinity of San Francisco Bay.

NAMES OF PLACES.	MS	CONVEYANCES.	TIME & C.
Fort Point	4	Omnibus	Four trips a day.
Lone Mountain	3	Street Railway	
Seal Rock	6	Cars & Omnibus	Two trips a day.
Mission Dolores	3	Street Railways	
Ocean House	8	Private Carriage	
San Mateo	20	Railroad	
Crystal Springs	23	Railroad & Stage	} Stage from San Mateo.
Half Moon Bay	29	" "	
Redwood City	30	Railroad	
Mountain View	38	"	
Santa Clara	47	"	
SAN JOSE	50	"	
Alviso	46	Steamer	One trip a day.
San Jose	54	Steamer & Stage	Stage from Alviso.
Almaden Mines	64	Railroad & Stage	" " San Jose
Santa Cruz	78	" " " "	" " " "
OAKLAND	8	Steamer & R. R.	Six trips a day.
Alameda	11	" " "	Four trips a day.
San Leandro	15	" " "	
Mission San Jose	34	St'r, R.R. & Stage	
Warm Springs	37	" " "	
San Pablo	18	Steamer & Stage	Stage f. Pt. Isabel.
BENICIA	30	Steamer	
Sacramento	117	"	} Leaves S. F. at 4 P. M., daily.
Stockton	117	"	
Martinez	33	"	Ferry fm. Benicia.
Pacheco	38	Steamer & Stage	} St'ge f. Martinez Round trip d'ly
Diablo Coal Mines	44	"	
Suisun City	50	Steamer	Tri-weekly.
Suisun	54	Steamer & Stage	Stage fm. Benicia.
Vallejo and }	28	Steamer	Daily.
Mare Island }	37	Steamer & Stage	Stage fm. Benicia.
Napa City	50	Steamer & R. R.	Daily.
" "	52	Steamer & Stage	Stage fm. Benicia.
Calistoga Springs	67	" " "	} Stage from Napa
Geyser Springs	118	" " "	
Sonoma	52	Steamer	Tri-Weekly.
Petaluma	48	"	Daily.
Santa Rosa	64	Steamer & Stage	} Daily Stage fm. Petaluma.
Healdsburg	80	" " "	
Geyser Springs	105	" " "	
San Quentin	12	Steamer	Daily.
San Rafael	16	Steamer & Stage	Stage from S. Q.
Sauclitto	9	Sail Boat	Passing Alcatraz.
Farallone Isls.	21	" " "	In the Ocean.

CALIFORNIA STATE STAMP TAX.

**Rates of Stamp Tax on Bills of Exchange,
Policies of Insurance, &c.**

AMOUNTS TAXED.	Bills of Exchange.	Letters of Credit.	Policies of Insurance.
\$20 to \$50	\$ 0 08	\$ 0 08	\$ 0 04
50 to 100	0 20	0 20	0 10
100 to 150	0 30	0 30	0 15
150 to 200	0 40	0 40	0 20
200 to 300	0 60	0 60	0 30
300 to 400	0 80	0 80	0 40
400 to 500	1 00	1 00	0 50
500 to 750	1 40	1 40	0 70
750 to 1,000	2 00	2 00	1 00
1,000 to 1,500	3 00	3 00	1 50
1,500 to 2,000	4 00	4 00	2 00
2,000 to 3,000	6 00	6 00	3 00
3,000 to 4,000	8 00	8 00	4 00
4,000 to 5,000	10 00	10 00	5 00
5,000 to 7,000	14 00	14 00	7 00
7,000 to 10,000	20 00	20 00	10 00
10,000 to 15,000	30 00	30 00	15 00
15,000 to 20,000	38 00	38 00	19 00
20,000 to 30,000	56 00	56 00	28 00
30,000 to 50,000	90 00	90 00	45 00
50,000 to 100,000	175 00	175 00	87 00
Above 100,000	200 00	200 00	100 00

Policies of Insurance, if for nine months and not less than six months, three fourths of the rates above charged; if for six months and not less than three months, one-half the rates above charged; if for three months or less than one-fourth the rates above charged.

Passengers' and Attorneys'.

FIRST CLASS	\$ 6 00
SECOND CLASS	4 00
STEERAGE	2 00
ATTORNEYS'	10 00

TIDES AT SAN FRANCISCO.

NOTE. — The table of Tides for San Francisco are obtained from the latest data of the United States Coast Survey. These Tides are extremely irregular, and as regards interval and height. The two daily tides may occur either during the same morning, or during the same afternoon. In the tide columns of these pages the asterisk (*) denotes the second morning tide, and the obelisk (†) the first afternoon tide of the day when so occurring. Finally, the larger tide of the day is distinguished by the letter (I), and the smaller by (o).

A COMPLETE

Table of Stamp Duties,

AS APPROVED MARCH 26, 1867.

AGREEMENT, or CONTRACT, not otherwise specified; any appraisal of value or damage, or for other purpose; for each agreement, or for each sheet of each agreement, &c., or renewal of same, \$0. 05

ASSIGNMENT.—See conveyance.

BANK CHECK, DRAFT, or ORDER for the payment of any sum of money drawn upon any bank, banker, or trust company, or for any sum exceeding \$10, drawn upon any other person, companies, or corporations, at sight or on demand. 02

BILL OF EXCHANGE, (*Inland*.) DRAFT, or ORDER, for the payment of money, not at sight or on demand, or any PROMISSORY NOTE, (except bank notes issued for circulation, and checks made and intended to be forthwith presented, and which shall be presented to a bank or banker for payment,) or any memorandum, check, receipt, or other written or printed evidence of money to be paid on demand, or at a time designated, for every \$100 or part thereof. 05

BILL OF EXCHANGE, (*Foreign*.) or LETTERS OF CREDIT, drawn in but payable out of the United States: If drawn singly or in duplicate, same as Inland bills of Exchange. If drawn in sets of three or more, every bill of each set, for every \$100, or the equivalent thereof, in any foreign currency in which the bill is expressed. 02

BILL OF LADING, or RECEIPT, (other than charter party,) for any goods &c., exported to a foreign port. 10

UNITED STATES STAMP DUTIES.

BILL OF SALE OF VESSEL, or any part thereof, consideration of value not over \$500 50
Every add'l \$500, or part thereof, 50 cents more.

BOND OF INDEMNITY, every \$1,000, or part thereof. . 50

BOND, for the execution of the duties of any office. . 1.00

BOND, other than required in legal proceedings, or used in connection with mortgage deeds, and not otherwise charged. 25

CERTIFICATE OF STOCK, in incorporated company. . . 25

CERTIFICATE OF PROFITS, or any certificate or memorandum showing an interest in the property or accumulations of any incorporated company, if for \$10 and not over \$50 10

Over \$50 and not over \$1,000 25

Every add'l \$1,000, or part thereof, 25 cents more.

CERTIFICATE OF DAMAGE, or otherwise, and all other certificates or documents issued by any port warden, marine surveyor, or person acting as such. 25

CERTIFICATE OF DEPOSIT, \$100 or less. 02

Over \$100. 05

(Certificates of measurement or weight of animals, wood, coal, or hay; certificate of the record of a deed or other instrument in writing, or of the acknowledgment or proof thereof, by attesting witnesses, require no stamp.)

CERTIFICATE, of any other description. 05

CHARTER PARTY, (or renewal &c. of same,) contract or agreement for charter of vessel or steamer of registered tonnage, not over 150 tons. 1.00

Over 150 and not over 300 tons. 3.00

Over 300 and not over 600 tons. 5.00

Over 600 tons. 10.00

CONTRACT, or renewal, Broker's note, or memorandum of sale of merchandise, exchange, real estate, or other property issued by brokers, or persons acting as such, each. 10

CONVEYANCE.—Deed or writing, whereby any lands, tenements, or other realty sold is granted, assigned, or transferred, for every \$500, or part thereof. 50

BANCROFT'S DIARY.—1869.

ENTRY OF GOODS, &c., at any custom house, for consumption or warehousing, of value not over \$100	.25
Over \$100 and not over \$500	.50
Over 500	1.00
WITHDRAWAL from bonded warehouse	.50
INSURANCE (<i>Life</i>).—Policy, (or assignment, &c. of same,) not over \$1,000	.25
Over \$1,000 and not over \$5000	.50
Over 5,000	1.00
INSURANCE, (<i>Marine, Inland, and Fire</i>).—Each policy or renewal, (or assignment, &c. of same,) on which premium is \$10 or less	.10
Over \$10 and not over \$50	.25
Over 50	.50
INSURANCE against accidental injury to persons, exempt.	
LEASE, agreement, memorandum, or contract, for the hire, use, or rent of any land, tenement, or portion thereof, when rent or rental value is not over \$300 per annum	.50
Every add'l \$200, or part thereof, 50 cents more.	
LEASE, ASSIGNMENT OF.—A stamp duty equal to that imposed on the original instrument, increased by a stamp duty on the consideration or value of the assignment equal to that imposed upon the conveyance of land for similar consideration or value. (See Conveyance.)	
MANIFEST, for custom house entry or clearance of vessel's cargo for foreign port, (except to British North America,) tonnage not over 300 tons	1.00
Over 300 and not over 600 tons	3.00
Over 600 tons	5.00
MORTGAGE, Trust Deed, or Personal Bond, for the payment of money, over \$100 and not over \$500	.50
Every add'l \$500, or part thereof, 50 cents more.	
Upon each assignment or transfer of a mortgage, a stamp duty equal to that upon a mortgage for the amount remaining unpaid.	
TRUST DEED conveying estate to uses, to be stamped as a conveyance.	

UNITED STATES STAMP DUTIES.

OFFICIAL INSTRUMENTS, documents and papers issued by the officers of the United States government, or by the officers of any State, county or town, require no stamp.	
Affidavits in suits or legal proceedings, exempt.	
ORDER for the payment of money.— See Bank Check.	
PASSAGE TICKET, to foreign port, (except British North America,) costing \$35 or less	.50
Over \$35 and not over \$50	1.00
Every add'l \$50, or part thereof, \$1 more.	
POWER OF ATTORNEY, to sell or transfer any stock, bond, or scrip, or for the collection of any dividend, or interest thereon	.25
To vote by proxy for officers of any corporation or society, (except religious, charitable, literary societies, or public cemeteries,)	.10
To sell or rent real estate	1.00
To collect rents	.25
To perform any act not herein mentioned	.50
PROBATE OF WILL, or LETTERS OF ADMINISTRATION, value of estate not over \$2,000	1.00
Every add'l \$1,000, or part thereof, 50 cents more. (Probate of will, letters testamentary or of administration, or administrator's or guardian's bonds, when the value of the estate, real and personal, does not exceed \$1,000, require no stamp.)	
PROMISSORY NOTE.—See Bill of Exchange, Inland.	
PROTEST of note, bill of exchange, acceptance, check or draft, or any marine protest, whether protested by a notary public or by any other officer who may be authorized by law to make such protest	.25
RECEIPTS for any sum of money, or for the payment of any debt exceeding \$20 in amount, not being for the satisfaction of any mortgage or judgment or decree of any court, or by indorsement on any stamped obligation in acknowledgment of its fulfilment	.02
CANNED MEATS, &c., for and upon every can, bottle or other single package, containing meats, fruits, vegetables, sauces, sirups, prepared mustard, jams or jellies, not exceeding 2 lbs. in weight	.01
Every addit'n'l pound or part thereof, 1 cent more.	

PROPRIETARY, Medicines, Perfumery, Cosmetics, Preparations, &c., each package retailed at not over 25 cents01
 Over 25 cents and not over 50 cents02
 Over 50 cents and not over 75 cents03
 Over 75 cents and not over \$1.04
 Every add'l 50 cents, or part thereof, 2 cents more.

FRICION MATCHES, or lucifer matches, or other articles made in part of wood, and used for like purposes, each package of 100 matches or part thereof01
 Packages of more than 100 matches, for each 100 or part thereof01

CIGAR LIGHTS, made in part of wood, wax, glass, paper, or other materials, in packages containing twenty-five lights or less, each package01
 Every additional twenty-five lights or part thereof, 1 cent more.

PLAYING CARDS, for and upon every pack, not exceeding fifty-two cards in number, irrespective of price or value05



The indiscriminate use of all kinds of stamps (except postage or proprietary) is permitted, care being taken to affix a stamp or stamps of the proper amount.

Documents made in any foreign country, to be used in the United States, shall pay the same duty as when made here.

Powers of Attorney, or other papers relating to applications for bounties, arrearages of pay, or pensions, require no stamp; neither do indorsement of negotiable instrument, nor any warrant of attorney accompanying a bond or note when such bond or note shall be stamped; and whenever any bond or note shall be secured by mortgage, and one stamp duty is required, provided the stamp duty placed thereon is the highest rate required for said instrument, or either of them.

The person using or affixing the stamp or stamps, shall write thereupon the initials of his name and the date upon which the same shall be attached or used, so that the same shall not be used again, under a penalty of \$50; or they may be otherwise canceled as the Commissioner of Internal Revenue may prescribe.

Violations of these Stamp Duties will be punished as the law directs.

TEMPERATURE OF VARIOUS LOCALITIES.

PLACE.	LATITUDE.	MEAN TEMPERATURE.		
		OF YEAR	OF WINT'R	OF SUM'R
Algiers	36° 48'	69.98°	61.52°	80.24°
Amsterdam	52.22	51.62	36.86	65.84
Berne	46.05	49.28	32.00	66.56
Bourdeaux	44.50	56.48	42.08	70.88
Brussels	50.50	51.80	36.68	66.20
Cairo	30.02	72.32	58.46	85.10
Cambridge, U.S.	42.25	50.36	33.98	70.70
Cincinnati	39.06	53.78	32.90	72.86
Copenhagen	55.41	45.68	30.74	62.60
Dublin	53.21	49.10	39.20	59.54
Edinburgh	55.57	47.84	38.66	58.28
Geneva	46.12	49.28	34.70	64.94
Havana	23.10	78.08	71.24	83.30
London	51.30	50.36	39.56	63.14
Marsailles	43.17	59.00	45.50	72.50
Moscow	55.45	40.10	10.78	67.10
Nagasaki	32.45	60.80	39.38	82.94
Natchez	31.28	64.76	48.56	79.16
New York	40.40	53.78	29.84	79.16
Paris	48.50	51.08	38.66	64.58
Pekin	39.54	54.86	26.42	82.58
Philadelphia	39.56	53.42	32.18	73.94
Quebec	46.47	41.74	14.18	68.00
Rome	41.53	60.44	45.86	75.20
Sacramento	38.32	59.90	48.46	70.77
San Francisco	37.47	55.85	50.59	58.97
Stockholm	59.20	42.26	25.52	61.88
St. Petersburg	59.56	38.84	17.06	62.06
Vera Cruz	19.11	77.72	71.96	81.50
Vienna	48.12	50.54	32.72	69.26
Warsaw	52.14	48.56	28.76	69.08

IMPORTANT EPOCHS AND ERAS,

WITH THE PERIODS OF THEIR COMMENCEMENT.

—:0:—

Grecian Year of the World	September 1, B. C. 5508.
Julian Period	January 1, B. C. 4713.
Jewish Mundane Era	Vernal Equinox, B. C. 3763.
Destruction of Troy	June, B. C. 1184.
Building of Solomon's Temple	May, B. C. 1015.
Era of Olympiads	New Moon, Summer Solstice, B. C. 776.
Roman Era	April 24, B. C. 753.
Era of Nabonasser	February 26, B. C. 747.
Metonic Cycle	July 15, B. C. 432.
Julian Year	January 1, B. C. 45.
Augustan Era	February 14, B. C. 27.
Indiction of Constantinople	September 1, B. C. 3.
Christian Era	January 1, A. D. 1, A. M. 4004.
Destruction of Jerusalem	September 21, A. D. 69.
Era of Diocletian	September 17, A. D. 284.
Era of Hegira	July 16, A. D. 622.
Persian Era	June 16, A. D. 632.
Conquest of England	October 14, A. D. 1066.
Declaration American Independence	July 4, A. D. 1776.

WEIGHTS AND MEASURES.

WEIGHT OF UNITED STATES COINS.

	Grains. Ounces.		Grains. Ounces.
Double Eagle =	516 = 1.075	3-Dollar piece =	77.4 = .16125
Eagle..... =	258 = 0.5375	Quarter Eagle =	64.5 = .144375
Half-Eagle... =	129 = 0.26875	Dollar piece... =	25.8 = .05375

The ounce of Gold is valued at \$18.6046.
The ounce of Silver is valued at \$1.25.

TROY WEIGHT.

Pound.	Ounces.	Pennyweights.	Grains.	Pounds Avoi.
1 =	12 =	240 =	5,760 =	.822861
..	1 =	20 =	480 =	.068571
..	..	1 =	24 =	.0034285

AVOIRDUPOIS WEIGHT.

Ton.	Cwt.	Pounds.	Ounces.	Drams.
1 =	20 =	2,240 =	35,840 =	573,440
..	1 =	112 =	1,792 =	28,672
..	..	1 =	16 =	256
..	1 =	16

APOTHECARIES' WEIGHT.

Pound.	Ounces.	Drams.	Scruples.	Grains.
1 =	12 =	96 =	288 =	5,760
..	1 =	8 =	24 =	480
..	..	1 =	3 =	60
..	1 =	20

LIQUID CAPACITY.

Gallon.	Quarts.	Pints.	Gills.	Cubic Inches.
1 =	4 =	8 =	32 =	231.
..	1 =	2 =	8 =	57.75
..	..	1 =	4 =	28.875
..	1 =	7.2175

A cylinder 7 inches in diameter and 6 inches high, holds a gallon.

A cubic foot contains 6.232 gallons.

DRY CAPACITY.

1 Bushel = 4 Pecks = 8 Gallons = 32 Quarts = 2150.42 Cubic Inches.

A cylinder 18.5 inches in diameter and 8 inches deep, holds a bushel.

WEIGHTS AND MEASURES.

MEASURES OF LENGTH.

Milo.	Furlongs.	Chains.	Rods.	Yards.	Feet.	Inches.
1 =	8 =	80 =	320 =	1,760 =	5,280 =	63,360
..	1 =	10 =	40 =	220 =	660 =	7,920
..	..	1 =	4 =	22 =	66 =	792
..	1 =	5.5 =	16.5 =	198
..	1 =	3 =	36
..	1 =	12

1 Statute Mile = 5,280 feet = .86275 Nautical Miles.

1 Nautical Mile = 6,120 feet = 1.15908 Statute Miles.

60 Nautical Miles = 69,545 Statute Miles.

1 Cable Length = 120 Fathoms = 240 Yards = 720 Feet.

MEASURES OF SURFACE.

Sq. Mile.	Acres.	Sq. Chains.	Sq. Rods.	Sq. Yards.	Sq. Feet.
1 =	640 =	6,400 =	102,400 =	3,037,600 =	27,878,400
..	1 =	10 =	160 =	4,840 =	43,560
..	..	1 =	16 =	484 =	4,356
..	1 =	30.25 =	272.25
..	1 =	9

220 by 198 feet square = 1 Acre.

A 50-vara lot, San Francisco measurement, is 137½ feet square.

A 100-vara lot is 275 feet square. The San Francisco Vara is 2 feet 9 inches. The true Vara is 2.781 feet. A San Francisco 100-vara lot = 1,7367.

DRAWING PAPER.

Cap	13 × 16 in.	Columbier.....	23 × 33½ in.
Demy	15½ × 19½ "	Atlas	26 × 33 "
Medium	18 × 22 "	Theorem	28 × 34 "
Royal	19 × 24 "	Double Elephant ..	26 × 40 "
Super-royal	19 × 27 "	Antiquarian	31 × 52 "
Imperial	21½ × 29 "	Emperor	40 × 60 "
Elephant	22½ × 27½ "	Uncle Sam	48 × 120 "

SPECIFIC GRAVITY OF SUBSTANCES.

Barometer, 30 in.; Fahr. Thermometer, 0 deg.

Platinum, wire.....	21.04	Aluminium	2.56
Gold, British standard..	17.49	Glass, flint	2.8 to 3.6
Mercury	13.57	Limestone	2.4 to 3.0
Lead	11.35	Slate	2.1 to 2.9
Silver	10.51	Marble, Parian	2.84
Copper.....	8.8 to 8.9	Granite	2.65 to 2.75
Brass	7.8 to 8.7	Chalk	2.2 to 2.7
Steel	7.83	Ivory	1.83
Iron, wrought	7.70	Mahogany	1.06
Iron, cast	7.21	India Rubber.....	0.93
Tin	7.30	Proof Spirit	0.92
Zinc	6.2 to 7.2	Alcohol, pure	0.79
Antimony	6.70	Cork	0.24

THE METRIC SYSTEM.

MEASURES OF LENGTH.

Metric Denominations and Values.	Equivalents in Denominations in use.
Myriameter = 10,000 meters	= 6,2137 miles.
Kilometer = 1,000 meters	= 0.62137 m., or 3,280 ft., 10 in.
Hectometer = 100 meters	= 328 feet and 1 inch.
Dekameter = 10 meters	= 393.7 inches.
Meter = 1 meter	= 39.37 inches.
Decimeter = .1 of a meter	= 3.937 inches.
Centimeter = .01 of a meter	= 0.3937 inches.
Millimeter = .001 of a meter	= 0.0394 inch.

MEASURES OF SURFACE.

Metric Denominations and Values.	Equivalents in Denominations in use.
Hectare = 10,000 square meters	= 2.471 acres.
Are = 100 square meters	= 119.6 square yards.
Centare = 1 square meter	= 1550 square inches.

MEASURES OF CAPACITY.

Metric Denominations and Values.	Equivalents in Denominations in use.
NAMES. NO. OF LITERS. CUBIC MEASURE. DRY MEASURE. WINE MEASURE.	
Kiloliter or stere, = 1,000	= 1 cubic meter = 1.308 cubic yds. = 264.17 galls.
Hectoliter = 100	= .1 cubic meter = 2 bush., 3.35 pks. = 26.417 galls.
Dekaliter = 10	= 10 c.declmet's = 9.08 quarts = 2.6417 galls.
Liter = 1	= 1 cu.declimeter = 0.908 quarts = 1.0567 quarts.
Deciliter = .1	= .1 c. declimeter = 6.1022 cubic ins. = 0.845 gill.
Centiliter = .01	= 10 c.centimet's = 0.6102 cubic in. = 0.338 fl'id.oz.
Milliliter = .001	= 1 c. centimeter = 0.061 cubic inch = 0.27 fluid dr.

WEIGHTS.

Metric Denominations and Values.	Equivalents in Denominations in use.		
Names.	No. grams.	Weight of what quantity of water at maxim'm density.	Avoirdupois Weight.
Millier or tonneau	= 1,000,000	= 1 cubic meter	= 2204.6 pounds.
Quintal	= 100,000	= 1 hectoliter	= 220.46 pounds.
Myriagram	= 10,000	= 10 liters	= 22.046 pounds.
Kilogram or kilo	= 1,000	= 1 liter	= 2.2046 pounds.
Hectogram	= 100	= 1 deciliter	= 3.5274 ounces.
Dekagram	= 10	= 10 c.centimet's	= 0.3527 ounce.
Gram	= 1	= 1 c. centimeter	= 15.432 grains.
Decigram	= .1	= .1 c. centimeter	= 1.5432 grains.
Centigram	= .01	= 10 c. millimet's	= 0.1543 grain.
Milligram	= .001	= 1 c. millimeter	= 0.0154 grain.

VALUE OF

FOREIGN GOLD AND SILVER COINS.

		D.	C.	M.
AUSTRIA.....	Gold, Quadruple Ducat.....	9	12	0
"	" Ducat.....	2	27	5
"	" Sovereign (for Lombardy).....	6	75	0
"	" Silver, Rix Dollar.....	0	97	0
"	" Florin.....	0	48	0
"	" Twenty Kreuzers.....	0	16	0
"	" Lira (for Lombardy).....	0	16	0
BADEN.....	Gold, Five Gulden.....	2	04	0
"	" Silver, Crown.....	1	07	0
"	" Gulden, or Florin.....	0	39	5
BAVARIA.....	Gold, Ducat.....	1	06	5
"	" Silver, Crown.....	0	39	5
"	" Florin.....	0	39	5
"	" Six Kreuzers.....	0	63	0
BELGIUM.....	Gold, Twenty-franc piece.....	3	83	2
"	" Twenty-five-Franc piece.....	4	72	0
"	" Silver, Five Francs.....	0	93	0
"	" Two-and-a-half Francs.....	0	46	5
"	" Two Francs.....	0	37	0
"	" Franc.....	0	18	5
BOLIVIA.....	Gold, Doubloon.....	15	58	0
"	" Silver, Dollar.....	1	06	6
"	" Half Dollar (debased, 1830).....	0	37	5
"	" Quar. Dollar (debased, 1830).....	0	18	7
BRAZIL.....	Gold, Piece of 6400 Reis.....	8	72	0
"	" Silver, Twelve hundred Reis.....	0	99	2
"	" Eight hundred Reis.....	0	66	0
"	" Four Hundred Reis.....	0	33	0
BREMEN.....	Silver, Thirty-six Grote.....	4	35	6
BRITAIN.....	Gold, Sovereign.....	4	34	5
"	" Silver, Half Crown.....	0	54	0
"	" Shilling.....	0	21	7
"	" Sixpence.....	0	10	8
"	" Fourpence.....	0	07	1
BRUNSWICK.....	Gold, Ten Thaler.....	7	89	0
"	" Silver, Thaler.....	0	68	0
CEN'L AMERICA, Gold, Doubloon.....		14	00	0
"	" Escudo.....	0	67	0
"	" Silver, Dollar (about).....	0	67	0
COSTA RICA.....	Gold, Half Doubloon (1850).....	7	62	0
"	" Silver, New Real.....	0	05	8
CHILL.....	Gold, Doubloon (before 1835).....	15	57	0
"	" Doubloon (1835, and since).....	15	66	0
"	" Silver, Dollar.....	1	01	0
"	" Quarter Dollar.....	0	24	4
"	" Eighth Dollar, or Real.....	0	11	2
DENMARK.....	Gold, Double Fred. or Ten Thaler.....	7	88	0
"	" Silver, Rigsbank Daler.....	0	52	3
"	" Specie Daler.....	1	04	7
"	" Thirty-two Skillings.....	0	17	0
ECUADOR.....	Gold, Half Doubloon.....	7	60	0
"	" Silver, Quarter Dollar.....	0	18	7
EGYPT.....	Gold, Hundred Piastres.....	4	97	0
"	" Silver, Twenty Piastres.....	0	96	0
FRANCE.....	Gold, Twenty Francs.....	3	85	0
"	" Silver, Five Francs.....	0	93	2
"	" Franc.....	0	18	5
FRANKFORT.....	Silver, Florin.....	0	39	5
GREECE.....	Gold, Twenty Drachms.....	3	45	0
"	" Drachm.....	0	18	5
GUIANA, BRITISH.....	Silver, Guilder.....	0	26	2
HANOVER.....	Gold, Ten Thaler.....	7	89	0
"	" Silver, Thaler (fine silver).....	0	59	2
"	" Thaler (750 fine).....	0	68	0
HAYTI.....	Silver, Dollar, or 100 Centimes.....	0	25	7

VALUE OF FOREIGN COINS.

		D.	C.	M.
HESSE CASSEL...	Silver, Thaler	0	67	5
"	One-sixth Thaler	0	11	0
HESSE DARMSTADT, "	Florin, or Gulden	0	39	5
HINDOSTAN...	Gold, Mohur (E. I. Co.)	7	10	0
"	Silver, Rupee	0	44	5
MECKLENBURG...	Gold, Ten Thaler	7	89	0
MEXICO.....	Gold, Doubloon (average)	15	53	0
"	Silver, Dollar (average)	1	00	7
NAPLES.....	Silver, Scudo	0	94	0
"	Ducat	2	26	5
"	Ten Guilders	4	00	7
"	Silver, Three Guilders	1	29	0
"	Guilder	0	40	0
"	Twenty-five Cents	0	09	5
"	Two-and-a-half Guilders	0	98	2
NEW GRANADA...	Gold, Doubloon, 21 carat stand,	15	61	0
"	" including the silver, 15	66	00	0
"	" nine-tenths stand, 15	31	00	0
"	" including the silver, 15	36	00	0
"	Silver, Dollar, usual weight	1	02	0
"	Dollar, or Ten Reals, 1850	0	93	0
NORWAY.....	Silver, Rigsdaler	1	05	0
PEERSIA.....	Gold, Tomann	2	23	0
"	Silver, Sahib Koran	0	21	5
PERU.....	Gold, Doubloon, Lima, to 1833	15	55	0
"	Doubloon, Cuzco, to 1833	15	62	0
"	Doubloon, Cuzco, 1837	15	53	0
"	Silver, Dollar, Lima mint	1	00	0
"	Dollar, Cuzco	1	00	9
"	Half Dollar, Cuzco, debased	0	36	0
"	Half Dollar, Arequipa	0	36	0
"	Half Dollar, Pasco	0	49	5
POLAND.....	Silver, Zloty	0	11	2
PORTUGAL.....	Gold, Half Joe (full weight)	8	65	0
"	Crown	5	81	0
"	Silver, Cruzado	0	55	2
"	Crown of 1000 Reils	1	12	0
"	Half Crown	0	56	0
PRUSSIA.....	Gold, Double Frederick	8	00	0
"	Silver, Thaler, average	0	68	0
"	One-sixth Thaler, average	0	11	0
"	Double Thaler, or 3/4 Gulden	1	39	0
ROME.....	Gold, Ten Scudi	10	37	0
"	Silver, Scudo	1	00	5
"	Teston (3-10 Scudo)	0	30	0
RUSSIA.....	Gold, Five Roubles	3	96	7
"	Silver, Rouble	0	75	0
"	Ten Zloty	1	13	5
"	Thirty Copecks	0	22	0
SARDINIA.....	Gold, Twenty Lire	3	84	5
"	Silver, Five Lire	0	83	2
SAXONY.....	Gold, Ten Thaler	7	84	0
"	Ducat	2	26	0
"	Silver, Species Thaler	0	96	0
"	Thaler (XIV. F.M.)	0	68	0
SIAM.....	Silver, Tical	0	58	5
SPAIN.....	Gold, Pistole (Quarter Doubloon)	3	90	5
"	Silver, Pistaren (4 Reals Vellon.)	0	19	5
SWEDEN.....	Silver, Species Daler	1	04	2
"	Half Daler	0	22	0
TURKEY.....	Gold, Hundred Piastres	4	37	4
"	Twenty Piastres (new)	0	82	0
"	Silver, Twenty Piastres (new)	0	82	0
TUSCANY.....	Gold, Sequin	2	30	0
"	Silver, Leopoldone	1	05	0
"	Florin	0	26	2
WURTEMBERG...	Silver, Gulden, 1824	0	38	5
"	Gulden, 1838, and since	0	39	5
"	Double Thaler, or 3/4 Gulden	1	39	0

RATES OF POSTAGE.

LETTERS TO ANY PART OF THE UNITED STATES, 3 cents for each 1-2 ounce or part thereof.

DROP LETTERS, 2 cents per each half ounce.

ADVERTISED LETTERS, 1 cent, in addition to the regular rates.

VALUABLE LETTERS may be registered on application at the office of mailing, and the payment of a registration fee not exceeding 20 cents.

TRANSIENT NEWSPAPERS, Periodicals, Pamphlets, Blanks, Proof Sheets, Book Manuscripts, and all mailable printed matter, (except circulars and books,) 2 cents for each and every 4 ounces. Double these rates are charged for Books.

UNSEALED CIRCULARS, (to one address,) not exceeding 3 in number, 2 cents, and in the same proportion for a greater number.

SEEDS, CUTTINGS, ROOTS, &c., 2 cents for each 4 ounces or less quantity.

ALL PACKAGES of Mail Matter not charged with letter postage must be so arranged that the same can be conveniently examined by Postmasters; if not, letter postage will be charged.

NO PACKAGE will be forwarded by mail which weighs over 4 pounds.

ALL POSTAGE MATTER, for delivery within the United States, must be PREPAID by stamps, except duly certified letters of soldiers and sailors.

WEEKLY NEWSPAPERS, (one copy only,) sent to actual Subscribers within the County where printed and published, free.

LETTERS TO CANADA and other British North American Provinces, 10 cents for each 1-2 ounce. Prepayment optional.

LETTERS TO GREAT BRITAIN OR IRELAND, 12 cents for each 1-2 ounce. Prepayment compulsory.

LETTERS TO FRANCE AND GERMANY, 15 cents for each 1-4 ounce. Prepayment optional.

LETTERS TO OTHER FOREIGN COUNTRIES vary in rate according to the route by which they are sent, and the proper information can be obtained of any Postmaster in the United States.

*Paper Boston England 2¹/₂
China 8¹/₂*

THE SOLAR SYSTEM.

The Sun, the centre of the Solar System, has a diameter of 885,680 miles, and its bulk is 1,400,000 times greater than that of the Earth, and 700 times greater than that of all the bodies revolving around it.

THE PLANETS.

Name.	Diameter in Miles.	Volume.	Distance from Sun.	Period of Revolution.
Mercury,	2,950	1-19	37,000,000	3 mos.
Venus,	7,800	9-10	68,000,000	7½ mos.
Earth,	7,912	1	95,000,000	1 yr.
Mars,	4,500	1-6	145,000,000	2 yrs.
Asteroids, (approximate)			250,000,000	4½ yrs.
Jupiter,	89,000	1,400	495,000,000	12 yrs.
Saturn,	79,000	1,000	900,000,000	29 yrs.
Uranus,	35,000	86	1,800,000,000	84 yrs.
Neptune,	31,000	60	2,800,000,000	164½ yrs.

The Moon's diameter is 2,160 miles, and her volume one forty-ninth of that of the Earth. She revolves in her orbit once in 29½ days, at a distance of 240,000 miles from the Earth.

The Asteroids number 79, of which 2 were discovered in 1868. Leverrier estimates that their aggregate mass does not exceed one-third of that of the Earth.

VELOCITY OF THE EARTH'S MOTION.—The Earth moves forward in its orbit, 1,640,000 miles per day, 68,000 miles per hour, 1,100 miles per minute, and nearly 19 miles every second.

APPARENT TIME is reckoned by the revolutions of the Sun from the meridian to the meridian again. These intervals being unequal, of course the apparent solar days are unequal to each other.

MEAN TIME is time reckoned by the *average* length of all the solar days throughout the year. This is the period which constitutes the civil day of 24 hours.

TIME TABLE.

Time of day at various places on the globe when it is 12 o'clock (noon) at San Francisco.

A. M.		H. M. S.		P. M.		H. M. S.	
Astoria, Oregon...	11 54	12		Gt. Salt Lake City...	12 41	40	
Calcutta, India....	1 35	56		Halifax, N. S.....	3 55	36	
Canton, China....	3 43	00		Havana, Cuba.....	2 41	00	
Honolulu, S. I....	9 39	8		Jerusalem, Pal....	10 31	24	
Melbourne, Aust..	5 48	00		Lima, Peru.....	3 1	36	
Pekin, China.....	3 56	00		London, Eng.....	8 9	31	
Sydney, Australia.	6 14	00		Los Angeles, Cal..	12 16	30	
Singapore, E. I....	3 8	00		Louisville, Ky....	2 27	4	
Shanghai, China..	4 12	40		Mexico, Mex.....	1 33	44	
Tobolsk, Siberia..	12 43	00		Mecca, Ara.....	10 50	00	
Yedo, Japan.....	5 30	00		Montreal, Canada.	3 15	44	
Yreka, Cal.....	11 59	30		New Orleans, La... 2 9 40			
P. M.							
Acapulco, Mex....	1 26	28		Nevada, Cal.....	12 5	15	
Archangel, Russia.	10 50	00		Oregon City, Ore..	12 0	40	
Aspinwall, Isthm's.	2 50	40		Panama, Isthmus..	2 52	40	
Berlin, Prus.....	9 3 35			Paris, France....	8 19	24	
Boston, Mass.....	3 25	48		Philadelphia, Pa..	3 9	22	
Cape Good Hope..	9 32	50		Placerville, Cal..	12 6	18	
Charleston, S. C..	2 50	40		Portland, Me.....	3 29	8	
Chicago, Ill.....	2 19	44		Rio Janeiro, Brazil.	5 17	8	
Cincinnati, O.....	2 32	16		Rome, Italy.....	9 0	3	
Constantinople... 10 9 44				Sacramento, Cal..	12 3	58	
Detroit, Mich....	2 38	12		Santa Fe, N. Mex..	12 55	44	
Eastport, Maine... 3 42 00				St. Louis, Mo....	2 9	4	
Fort Yuma, Cal... 12 31 18				St. Petersburg... 10 11 20			
Frankfort, Ger... 8 43 24				Stockholm, Sw'd'n.	9 22	20	
Galveston, Tex... 1 50 32				Toronto, Canada..	2 52	00	
Geneva, Switz... 8 34 42				Vienna, Austria... 9 15 35			
Gibraltar, Spain... 7 48 44				Washington, D. C.	3 2	00	

At the Isle of France, Indian Ocean, it is midnight, when it is noon at San Francisco.

Chronological Cycles, 1869.

Dominical Letters.....	C.	Lunar Cycle or Golden No. 8
Epact	17	Roman Indiction..... 12
Solar Cycle	2	Julian Period..... 6,582

ALMANAC FOR 1869.

Eclipses in the Year 1869.

In the year 1869 there will be four Eclipses; two of the Sun, and two of the Moon.

I.—A PARTIAL ECLIPSE OF THE MOON, January 27th, visible as follows:

PHASES.	NEW YORK.	ST. LOUIS.	S. FRANCIS.
	<i>d h m</i>	<i>d h m</i>	<i>d h m</i>
Moon enters Penumbra	27 6 22 A.	27 5 17 A.	Invisible.
Moon enters Shadow	27 7 33 A.	27 6 28 A.	Invisible.
Middle of Eclipse	27 8 42 A.	27 7 37 A.	27 5 28 A.
Moon leaves Shadow	27 9 51 A.	27 8 46 A.	27 6 37 A.
Moon leaves Penumbra	27 11 2 A.	27 9 57 A.	27 7 48 A.

This Eclipse visible to North and South America, Europe, and a greater part of Asia and Africa.

II.—AN ANNULAR ECLIPSE OF THE SUN, February 11th. Invisible in North America. Visible in southern Africa and southern South America.

III.—A PARTIAL ECLIPSE OF THE MOON, July 23d. Visible to Australia, Sandwich Islands, Asia, southern part of Africa, and western part of North America. Visible to San Francisco, as follows:

Moon enters Penumbra.....23d. 3h. 10m., morn.
Moon enters Shadow.....23d. 4h. 30m., morn.

IV.—A TOTAL ECLIPSE OF THE SUN, August 7th, visible as follows:

PHASES.	NEW YORK.	ST. LOUIS.	S. FRANCIS.
	<i>d h m</i>	<i>d h m</i>	<i>d h m</i>
Eclipse begins	7 5 12 A.	7 4 3 A.	7 1 28 A.
Eclipse ends	sunset.	7 6 1 A.	7 3 41 A.

Central and total along a line drawn through Raleigh, N. C., Springfield, Ill., and Behrings Straits. This Eclipse visible to North America, and the extreme northeastern edge of Asia.

Morning and Evening Stars.

VENUS will be *Morning Star* until May 9th, and *Evening Star* the rest of the year.

JUPITER will be *Evening Star* until April 17th, then *Morning Star* till November 8th, and *Evening Star* the rest of the year.

List of Sundays in 1869.

JANUARY	3	10	17	24	31
FEBRUARY	7	14	21	28	
MARCH	7	14	21	28	
APRIL	4	11	18	25	
MAY	2	9	16	23	30
JUNE	6	13	20	27	
JULY	4	11	18	25	
AUGUST	1	8	15	22	29
SEPTEMBER	5	12	19	26	
OCTOBER	3	10	17	24	31
NOVEMBER	7	14	21	28	
DECEMBER	5	12	19	26	

January.

MOON'S PHASES.

Last Quarter, 4d. 10h. 12m. A.
New Moon, 12d. 10h. 43m. M.
First Quarter, 20d. 4h. 16m. A.
Full Moon, 27d. 5h. 20m. A.

D of M	D of M	Sun Rises h m	Sun Sets h m	Days' Length h m	Moon R & S h m
1	Fr	7 16 4	52	9 36	8 48
2	Sa	7 16 4	53	9 37	9 57
3	S	7 16 4	54	9 38	11 6
4	Mo	7 16 4	55	9 39	morn
5	Tu	7 16 4	56	9 40	1 12
6	We	7 16 4	57	9 41	0 17
7	Th	7 16 4	58	9 42	2 21
8	Fr	7 16 4	59	9 43	3 23
9	Sa	7 15 5	0	9 45	4 23
10	S	7 15 5	1	9 46	5 21
11	Mo	7 15 5	2	9 47	6 15
12	Tu	7 15 5	2	9 47	sets
13	We	7 15 5	3	9 48	6 11
14	Th	7 14 5	5	9 51	7 6
15	Fr	7 14 5	6	9 52	8 1
16	Sa	7 14 5	7	9 53	8 57
17	S	7 14 5	8	9 54	9 52
18	Mo	7 13 5	9	9 56	10 48
19	Tu	7 13 5	10	9 57	11 45
20	We	7 12 5	11	9 59	morn
21	Th	7 12 5	12	10 0	2 42
22	Fr	7 12 5	13	10 1	4 41
23	Sa	7 11 5	14	10 2	4 43
24	S	7 11 5	15	10 4	3 46
25	Mo	7 10 5	17	10 7	4 48
26	Tu	7 9 5	18	10 9	5 49
27	We	7 8 5	19	10 11	rises
28	Th	7 7 5	20	10 13	6 25
29	Fr	7 7 5	21	10 14	7 38
30	Sa	7 6 5	22	10 16	8 50
31	S	7 5 5	23	10 18	10 0

February.

MOON'S PHASES.

Last Quarter, 3d. 8h. 46m. M.
New Moon, 11d. 5h. 44m. M.
First Quarter, 19d. 5h. 56m. M.
Full Moon, 26d. 3h. 54m. M.

D of M	D of M	Sun Rises h m	Sun Sets h m	Days' Length h m	Moon R & S h m
1	Mo	7 4 5	24	10 20	11 7
2	Tu	7 3 5	25	10 22	morn
3	We	7 2 5	26	10 24	0 13
4	Th	7 1 5	28	10 27	1 16
5	Fr	7 0 5	29	10 29	2 18
6	Sa	6 59 5	30	10 31	3 16
7	S	6 58 5	31	10 33	4 11
8	Mo	6 57 5	32	10 35	5 2
9	Tu	6 56 5	34	10 38	5 48
10	We	6 55 5	35	10 40	sets
11	Th	6 54 5	36	10 42	5 54
12	Fr	6 53 5	37	10 44	6 50
13	Sa	6 52 5	38	10 46	7 46
14	S	6 51 5	39	10 48	8 42
15	Mo	6 50 5	40	10 50	9 38
16	Tu	6 49 5	41	10 52	10 33
17	We	6 48 5	42	10 54	11 31
18	Th	6 47 5	43	10 56	morn
19	Fr	6 45 5	44	10 59	0 30
20	Sa	6 44 5	45	11 1	1 30
21	S	6 43 5	46	11 3	2 31
22	Mo	6 42 5	47	11 5	3 31
23	Tu	6 40 5	48	11 8	4 28
24	We	6 38 5	49	11 11	5 23
25	Th	6 37 5	50	11 13	6 11
26	Fr	6 36 5	51	11 15	rises
27	Sa	6 34 5	52	11 18	7 36
28	S	6 33 5	53	11 20	8 48
29	Mo	6 32 5	54	11 22	9 57
30	Tu	6 31 5	55	11 24	11 3
31	We	6 30 5	56	11 26	12 15

HIGH TIDES :: JANUARY.

D	Morn's	Even'g	D	Morn's	Even'g
1	3 7	1 17	17	3 27	3 31
2	3 55	2 27	18	4 28	4 61
3	4 38	3 42	19	4 38	4 24
4	5 38	5 41	20	5 40	5 58
5	6 28	6 28	21	6 27	7 12
6	7 11	7 41	22	7 41	8 39
7	7 51	9 08	23	7 40	9 40
8	8 34	10 08	24	8 24	10 58
9	9 01	11 10	25	9 41	11 58
10	9 44		26	9 32	
11	10 08	10 57	27	9 38	10 27
12	10 38	10 47	28	1 15	11 18
13	1 20	11 41	29	2 6	12 17
14	2 08	1 26	30	2 46	1 9
15	2 52	1 15	31	3 23	2 13
16	2 58	2 34			

HIGH TIDES :: FEBRUARY.

D	Morn's	Even'g	D	Morn's	Even'g
1	4 38	3 24	16	3 14	3 32
2	4 48	4 47	17	3 46	4 35
3	5 29	6 16	18	4 30	5 56
4	6 28	7 36	19	5 64	7 6
5	7 10	8 59	20	5 51	8 17
6	7 50	10 11	21	6 37	9 31
7	8 35	11 3	22	7 30	10 30
8	9 11	11 52	23	8 27	11 28
9	9 52		24	9 27	
10	10 28	10 32	25	10 11	10 15
11	1 08	11 20	26	10 48	11 13
12	1 28	1 14	27	1 32	1 16
13	1 57	1 7	28	2 08	1 13
14	2 16	1 52			
15	2 40	2 31			

* For explain at story rem arks, s ee Note on page 17

ALMANAC FOR 1869.

March.

MOON'S PHASES.

Last Quarter, 4d. 9h. 33m. A.
New Moon, 13d. 0h. 36m. M.
First Quarter, 20d. 9h. 44m. A.
Full Moon, 27d. 1h. 22m. A.

April.

MOON'S PHASES.

Last Quarter, 3d. 0h. 38m. A.
New Moon, 11d. 5h. 37m. A.
First Quarter, 19d. 6h. 56m. M.
Full Moon, 25d. 10h. 11m. A.

D of M	D of W	Sun Rises h m	Sun Sets h m	Days' Length h m	Moon R & S h m
1	Mo	6 32	5 55	11 22	9 57
2	Tu	6 31	5 54	11 24	11 4
3	We	6 29	5 56	11 27	morn
4	Th	6 28	5 57	11 29	0 9
5	Fr	6 26	5 58	11 32	1 10
6	Sa	6 25	5 59	11 34	2 6
7	Su	6 23	6 01	11 37	2 59
8	Mo	6 22	6 1	11 39	3 47
9	Tu	6 20	6 2	11 42	4 29
10	We	6 19	6 3	11 44	5 6
11	Th	6 17	6 4	11 47	5 41
12	Fr	6 16	6 5	11 49	sets
13	Sa	6 14	6 11	12 6	6 38
14	Su	6 13	6 7	11 54	7 32
15	Mo	6 11	6 7	11 56	8 29
16	Tu	6 9	6 8	11 59	9 26
17	We	6 8	6 9	12 1	10 24
18	Th	6 7	6 10	12 3	11 23
19	Fr	6 6	6 11	12 6	morn
20	Sa	6 4	6 12	8 0 22	
21	Su	6 2	6 13	12 11	1 20
22	Mo	6 1	6 14	12 13	2 17
23	Tu	5 59	6 14	12 15	3 10
24	We	5 57	6 16	12 19	3 59
25	Th	5 55	6 17	12 22	4 43
26	Fr	5 54	6 18	12 24	5 24
27	Sa	5 52	6 19	12 27	rises
28	Su	5 51	6 20	12 29	7 33
29	Mo	5 50	6 20	12 30	8 43
30	Tu	5 48	6 21	12 33	9 52
31	We	5 46	6 22	12 36	10 57

D of M	D of W	Sun Rises h m	Sun Sets h m	Days' Length h m	Moon R & S h m
1	Th	5 45	6 23	12 38	11 58
2	Fr	5 44	6 24	12 40	morn
3	Sa	5 42	6 25	12 43	0 53
4	Su	5 40	6 26	12 46	1 43
5	Mo	5 39	6 27	12 48	2 28
6	Tu	5 38	6 28	12 50	3 3
7	We	5 36	6 28	12 52	3 47
8	Th	5 35	6 29	12 54	4 15
9	Fr	5 33	6 30	12 57	4 44
10	Sa	5 32	6 31	12 59	5 14
11	Su	5 30	6 32	13 2	sets
12	Mo	5 29	6 33	13 4	7 20
13	Tu	5 28	6 34	13 6	8 18
14	We	5 26	6 35	13 9	9 17
15	Th	5 24	6 36	13 12	10 16
16	Fr	5 23	6 37	13 14	11 15
17	Sa	5 22	6 37	13 15	morn
18	Su	5 19	6 38	13 17	0 12
19	Mo	5 16	6 39	13 20	1 5
20	Tu	5 18	6 41	13 23	1 55
21	We	5 16	6 42	13 26	2 40
22	Th	5 15	6 43	13 28	3 20
23	Fr	5 14	6 43	13 29	3 58
24	Sa	5 13	6 44	13 31	4 34
25	Su	5 11	6 45	13 34	5 11
26	Mo	5 10	6 46	13 35	rises
27	Tu	5 9	6 47	13 38	8 37
28	We	5 8	6 48	13 40	9 42
29	Th	5 6	6 49	13 43	10 42
30	Fr	5 6	6 50	13 45	11 36
31	Sa

HIGH TIDES: MARCH.

D	Morn'g	Even'g	D	Morn'g	Even'g
1	2 37	2 20	17	2 9	3 55
2	3 32	3 35	18	4 34	4 35
3	4 43	4 22	19	3 18	5 44
4	4 25	6 18	20	4 37	6 57
5	5 12	7 38	21	4 58	7 58
6	6 01	8 48	22	6 2	9 0
7	6 54	9 52	23	7 11	9 59
8	7 52	10 42	24	8 15	10 52
9	8 44	11 28	25	9 15	11 25
10	9 31	11 51	26	10 16	11 2
11	10 19	11 20	27	10 6	11 9
12	10 58	10 58	28	10 25	10 25
13	10 38	10 14	29	11 1	1 27
14	10 2	9 48	30	1 17	2 38
15	1 27	1 48	31	2 3	3 37
16	1 47	2 37			

HIGH TIDES: APRIL.

D	Morn'g	Even'g	D	Morn'g	Even'g
1	3 37	4 47	16	1 32	4 17
2	3 21	6 12	17	2 34	5 25
3	4 18	7 28	18	3 51	6 35
4	5 23	8 25	19	4 32	7 30
5	6 27	9 14	20	5 42	8 30
6	7 30	10 3	21	6 54	9 30
7	8 28	10 36	22	8 7	10 21
8	9 22	11 1	23	9 47	10 50
9	10 11	11 25	24	10 51	11 30
10	11 11	11 38	25	11 47	11 46
11	11 42		26	1 31	0 23
12	12 25	0 43	27	2 32	1 24
13	1 25	1 25	28	3 52	2 25
14	3 07	1 37	29	5 07	3 25
15	4 1	2 30	30	2 13	4 25
16	1 27	3 27	31	1 57	4 30

ALMANAC FOR 1869.

May.

MOON'S PHASES.

Last Quarter, 3d. 5h. 30m. M.
New Moon, 11d. 7h. 56m. M.
First Quarter, 18d. 1h. 19m. A.
Full Moon, 25d. 7h. 13m. M.

D of M	D of W	Sun Rises h m	Sun Sets h m	Days' Length h m	Moon R & S h m
1	Sa	5 4	6 51	13 47	morn
2	Mo	5 3	6 52	13 49	0 23
3	Tu	5 2	6 52	13 50	1 6
4	We	5 1	6 53	13 52	1 43
5	Th	4 59	6 54	13 55	2 16
6	Fr	4 58	6 55	13 57	2 46
7	Sa	4 56	6 56	13 59	3 16
8	Su	4 56	6 57	14 1	3 44
9	Mo	4 55	6 58	14 3	4 12
10	Tu	4 54	6 59	14 5	4 44
11	We	4 53	7 0	14 7	sets
12	Th	4 52	7 1	14 9	8 11
13	Fr	4 51	7 1	14 10	9 10
14	Sa	4 50	7 3	14 13	11 3
15	Su	4 49	7 4	14 15	11 53
16	Mo	4 48	7 5	14 17	morn
17	Tu	4 47	7 6	14 19	0 38
18	We	4 47	7 6	14 19	1 19
19	Th	4 46	7 7	14 21	1 58
20	Fr	4 45	7 8	14 23	2 34
21	Sa	4 45	7 9	14 24	3 8
22	Su	4 44	7 10	14 26	3 44
23	Mo	4 43	7 10	14 27	4 21
24	Tu	4 43	7 11	14 28	rises
25	We	4 42	7 12	14 30	8 26
26	Th	4 42	7 13	14 31	9 25
27	Fr	4 41	7 14	14 33	10 16
28	Sa	4 41	7 14	14 33	11 2
29	Su	4 40	7 15	14 35	11 42
30	Mo	4 40	7 16	14 35	morn

HIGH TIDES: MAY.

D	Morn'g	Even'g	D	Morn'g	Even'g
1	2 42	5 40	17	3 8	5 56
2	3 40	6 47	18	4 26	7 0
3	4 40	7 43	19	5 41	7 58
4	5 57	8 28	20	6 57	8 56
5	6 54	9 14	21	8 6	9 36
6	7 41	9 48	22	9 13	10 56
7	8 52	10 19	23	10 17	11 57
8	9 52	10 47	24	11 17	12 51
9	10 38	11 8	25	12 0	1 20
10	11 25	11 22	26	1 25	1 24
11	12 0	11 46	27	0 9	1 22
12	0 17	1 22	28	0 38	1 24
13	0 37	2 28	29	1 18	1 47
14	0 53	3 28	30	2 9	2 17
15	1 6	4 6	31	3 9	2 58
16	1 52	4 56			

June.

MOON'S PHASES.

Last Quarter, 1d. 11h. 11m. A.
New Moon, 9d. 7h. 42m. A.
First Quarter, 16d. 6h. 5m. A.
Full Moon, 23d. 5h. 28m. A.

D of M	D of W	Sun Rises h m	Sun Sets h m	Days' Length h m	Moon R & S h m
1	Tu	4 40	7 17	14 37	0 17
2	We	4 39	7 17	14 38	0 49
3	Th	4 39	7 18	14 39	1 17
4	Fr	4 39	7 18	14 39	1 45
5	Sa	4 38	7 19	14 41	2 13
6	Su	4 38	7 19	14 41	2 43
7	Mo	4 38	7 20	14 42	3 15
8	Tu	4 37	7 20	14 43	3 50
9	We	4 37	7 21	14 44	sets
10	Th	4 37	7 21	14 44	8 1
11	Fr	4 37	7 21	14 44	8 59
12	Sa	4 37	7 22	14 45	9 51
13	Su	4 37	7 22	14 45	10 39
14	Mo	4 37	7 23	14 46	11 21
15	Tu	4 37	7 23	14 46	morn
16	We	4 37	7 23	14 46	0 0
17	Th	4 37	7 24	14 46	0 36
18	Fr	4 38	7 24	14 46	1 10
19	Sa	4 38	7 25	14 47	1 45
20	Su	4 38	7 25	14 47	2 21
21	Mo	4 38	7 25	14 47	2 59
22	Tu	4 38	7 25	14 47	3 41
23	We	4 39	7 26	14 47	4 28
24	Th	4 39	7 26	14 47	rises
25	Fr	4 39	7 26	14 47	8 55
26	Sa	4 39	7 26	14 47	9 39
27	Su	4 40	7 26	14 46	10 15
28	Mo	4 40	7 26	14 46	10 48
29	Tu	4 41	7 26	14 45	11 19
30	We	4 41	7 26	14 45	11 47
31	Th

HIGH TIDES: APRIL.

D	Morn'g	Even'g	D	Morn'g	Even'g
1	2 37	2 20	17	2 9	3 55
2	3 32	3 35	18	4 34	4 35
3	4 43	4 22	19	3 18	5 44
4	4 25	6 18	20	4 37	6 57
5	5 12	7 38	21	4 58	7 58
6	6 01	8 48	22	6 2	9 0
7	6 54	9 52	23	7 11	9 59
8	7 52	10 42	24	8 15	10 52
9	8 44	11 28	25	9 15	11 25
10	9 31	11 51	26	10 16	11 2
11	10 19	11 20	27	10 6	11 9
12	10 58	10 58	28	10 25	10 25
13	10 38	10 14	29	11 1	1 27
14	10 2	9 48	30	1 17	2 38
15	1 27	1 48	31	2 3	3 37
16	1 47	2 37			

HIGH TIDES: JUNE.

D	Morn'g	Even'g	D	Morn'g	Even'g
1	2 42	5 40	17	3 8	5 56
2	3 40	6 47	18	4 26	7 0
3	4 40	7 43	19	5 41	

ALMANAC FOR 1869.

July.

MOON'S PHASES.

Last Quarter, 1d. 4h. 30m. A.
New Moon, 9d. 5h. 25m. M.
First Quarter, 15d. 10h. 38m. A.
Full Moon, 23d. 5h. 44m. M.
Last Quarter, 31d. 3h. 55m. M.

D of M	D of W	Sun Rises h m	Sun Sets h m	Days' Length h m	Moon R & S h m
1	Th	4 47	7 26	14 45	morn
2	Fr	4 42	7 26	14 44	0 15
3	Sa	4 42	7 25	14 43	0 45
4	Su	4 43	7 25	14 42	1 14
5	Mo	4 43	7 25	14 42	1 46
6	Tu	4 44	7 24	14 40	2 22
7	We	4 44	7 24	14 40	3 5
8	Th	4 45	7 24	14 39	3 56
9	Fr	4 45	7 23	14 38	sets
10	Sa	4 46	7 23	14 37	8 34
11	Su	4 47	7 23	14 36	9 19
12	Mo	4 48	7 22	14 34	10 0
13	Tu	4 48	7 22	14 34	10 38
14	We	4 49	7 22	14 33	11 13
15	Th	4 50	7 21	14 31	11 46
16	Fr	4 51	7 20	14 29	morn
17	Sa	4 52	7 20	14 28	0 21
18	Su	4 52	7 19	14 27	0 59
19	Mo	4 53	7 19	14 26	1 40
20	Tu	4 54	7 18	14 24	2 23
21	We	4 55	7 17	14 22	3 03
22	Th	4 55	7 16	14 21	4 8
23	Fr	4 56	7 16	14 20	rises
24	Sa	4 57	7 15	14 18	8 14
25	Su	4 58	7 14	14 16	8 49
26	Mo	4 59	7 13	14 14	9 21
27	Tu	5 0	7 12	14 12	9 50
28	We	5 0	7 12	14 12	10 17
29	Th	5 1	7 11	14 10	10 45
30	Fr	5 2	7 10	14 8	11 13
31	Sa	5 3	7 9	14 6	11 44

August.

MOON'S PHASES.

New Moon, 7d. 1h. 58m. A.
First Quarter, 14d. 4h. 30m. A.
Full Moon, 21d. 5h. 14m. A.
Last Quarter, 29d. 11h. 48m. A.

D of M	D of W	Sun Rises h m	Sun Sets h m	Days' Length h m	Moon R & S h m
1	Su	5 47	7 14	13 44	morn
2	Mo	5 47	7 14	13 43	0 19
3	Tu	5 47	7 14	13 43	0 57
4	We	5 47	7 13	13 41	1 43
5	Th	5 47	7 13	13 41	2 36
6	Fr	5 47	7 13	13 41	3 37
7	Sa	5 47	7 13	13 41	sets
8	Su	5 47	7 13	13 41	sets
9	Mo	5 47	7 13	13 41	3 59
10	Tu	5 47	7 13	13 41	4 35
11	We	5 47	7 13	13 41	5 12
12	Th	5 47	7 13	13 41	5 48
13	Fr	5 47	7 13	13 41	6 24
14	Sa	5 47	7 13	13 41	7 00
15	Su	5 47	7 13	13 41	morn
16	Mo	5 47	7 13	13 41	0 23
17	Tu	5 47	7 13	13 41	1 8
18	We	5 47	7 13	13 41	1 57
19	Th	5 47	7 13	13 41	2 53
20	Fr	5 47	7 13	13 41	3 50
21	Sa	5 47	7 13	13 41	4 47
22	Su	5 47	7 13	13 41	5 42
23	Mo	5 47	7 13	13 41	6 37
24	Tu	5 47	7 13	13 41	7 32
25	We	5 47	7 13	13 41	8 27
26	Th	5 47	7 13	13 41	9 15
27	Fr	5 47	7 13	13 41	10 45
28	Sa	5 47	7 13	13 41	11 33
29	Su	5 47	7 13	13 41	12 21
30	Mo	5 47	7 13	13 41	1 13
31	Tu	5 47	7 13	13 41	morn

ALMANAC FOR 1869.

September.

MOON'S PHASES.

New Moon, 5d. 9h. 57m. M.
First Quarter, 12d. 1h. 13m. A.
Full Moon, 20d. 0h. 31m. A.
Last Quarter, 28d. 1h. 0m. A.

D of M	D of W	Sun Rises h m	Sun Sets h m	Days' Length h m	Moon R & S h m
1	We	5 30	6 29	12 59	0 22
2	Th	5 31	6 28	12 57	1 18
3	Fr	5 32	6 26	12 54	2 20
4	Sa	5 33	6 25	12 52	3 30
5	Su	5 34	6 23	12 49	sets
6	Mo	5 34	6 22	12 48	7 7
7	We	5 35	6 20	12 45	7 43
8	Th	5 36	6 19	12 43	8 20
9	Fr	5 37	6 17	12 40	8 58
10	Sa	5 38	6 15	12 37	9 38
11	Su	5 38	6 14	12 36	10 20
12	Mo	5 39	6 12	12 33	11 5
13	Tu	5 40	6 11	12 31	11 54
14	We	5 41	6 9	12 28	morn
15	Th	5 42	6 7	12 25	0 48
16	Fr	5 42	6 12	12 24	1 44
17	Sa	5 43	6 11	12 21	2 41
18	Su	5 44	6 10	12 18	3 38
19	Mo	5 45	6 12	12 16	4 35
20	Tu	5 46	6 12	12 14	rises
21	We	5 47	6 11	12 11	5 31
22	Th	5 48	6 10	12 9	6 27
23	Fr	5 49	6 10	12 6	7 47
24	Sa	5 49	6 10	12 4	8 18
25	Su	5 50	6 10	12 2	8 52
26	Mo	5 51	6 10	12 0	9 31
27	Tu	5 52	6 10	11 57	10 15
28	We	5 53	6 10	11 55	11 7
29	Th	5 54	6 10	11 52	morn
30	Fr	5 55	6 10	11 49	0 4
31	Sa	5 56	6 10	11 46	0 4

October.

MOON'S PHASES.

New Moon, 5d. 6h. 9m. M.
First Quarter, 12d. 1h. 52m. M.
Full Moon, 20d. 5h. 47m. M.
Last Quarter, 28d. 0h. 24m. M.

D of M	D of W	Sun Rises h m	Sun Sets h m	Days' Length h m	Moon R & S h m
1	Fr	5 56	5 42	11 46	1 8
2	Sa	5 57	5 41	11 44	2 16
3	Su	5 58	5 40	11 42	3 27
4	Mo	5 58	5 38	11 40	4 41
5	Tu	5 59	5 37	11 38	sets
6	We	6 0	5 35	11 35	6 50
7	Th	6 1	5 33	11 32	7 29
8	Fr	6 2	5 32	11 30	8 12
9	Sa	6 3	5 31	11 28	8 58
10	Su	6 4	5 30	11 26	9 48
11	Mo	6 5	5 28	11 23	10 42
12	Tu	6 6	5 26	11 20	11 38
13	We	6 7	5 25	11 18	morn
14	Th	6 8	5 24	11 16	0 34
15	Fr	6 8	5 23	11 15	1 32
16	Sa	6 9	5 21	11 12	2 28
17	Su	6 10	5 20	11 10	3 24
18	Mo	6 12	5 18	11 6	4 20
19	Tu	6 13	5 17	11 4	5 15
20	We	6 14	5 15	11 1	rises
21	Th	6 15	5 14	10 59	6 20
22	Fr	6 16	5 13	10 57	6 33
23	Sa	6 17	5 11	10 54	7 50
24	Su	6 18	5 10	10 52	8 11
25	Mo	6 19	5 9	10 50	9 0
26	Tu	6 20	5 7	10 47	9 55
27	We	6 21	5 6	10 45	10 55
28	Th	6 22	5 4	10 43	11 59
29	Fr	6 23	5 4	10 41	morn
30	Sa	6 24	5 3	10 39	1 6
31	Su	6 25	5 2	10 37	2 17

HIGH TIDES::JULY.

D	Morn's	Even'g	D	Morn's	Even'g
1	5 32	6 11	17	6 49	6 50
2	6 15	7 02	18	8 9	7 43
3	6 22	7 40	19	9 27	8 27
4	7 58	8 10	20	10 54	9 8
5	9 9	8 51	21	11 37	9 43
6	10 17	9 20	22	0 30	10 30
7	11 29	9 12	23	1 13	11 15
8	0 17	10 17	24	1 52	9
9	1 13	11 27	25	0 4	2 26
10	2 22	11 51	26	0 40	2 42
11	3 42	12 46	27	1 30	3 18
12	4 22	1 36	28	2 23	3 43
13	4 57	2 38	29	3 19	4 23
14	5 11	3 41	30	4 17	5 7
15	4 12	3 58	31	5 25	6 40
16	5 33	6 18			

HIGH TIDES::AUGUST.

D	Morn's	Even'g	D	Morn's	Even'g
1	6 39	6 22	17	9 36	7 42
2	7 18	7 57	18	10 43	8 36
3	9 35	7 47	19	11 34	9 30
4	10 38	8 20	20	0 16	10 24
5	11 23	9 12	21	0 45	11 11
6	0 18	10 44	22	1 07	11 57
7	1 28	11 57	23	1 30	12 42
8	1 45	11 40	24	2 40	1 54
9	2 23	2 23	25	3 30	2 47
10	0 44	3 34	26	2 6	3 42
11	1 42	3 47	27	3 0	4 36
12	2 40	3 31	28	4 3	5 29
13	4 13	4 25	29	5 12	6 24
14	5 43	5 14	30	6 23	7 17
15	7 3	6 32	31	7 41	8 31
16	8 19	6 53			

HIGH TIDES::SEPTEMBER.

D	Morn's	Even'g	D	Morn's	Even'g
1	8 57	7 6	17	11 7	9 33
2	10 48	8 6	18	11 43	10 20
3	11 46	9 6	19	0 44	11 14
4	11 54	10 21	20	0 27	12 0
5	0 36	10 55	21	0 31	0 32
6	1 07	11 54	22	0 37	1 17
7	1 44	1 44	23	1 36	1 57
8	0 11	3 28	24	1 55	2 32
9	1 58	2 56	25	2 42	3 16
10	3 18	3 25	26	3 42	4 01
11	4 38	3 51	27	4 38	4 51
12	5 46	4 51	28	6 4	5 28
13	7 9	5 15	29	7 22	6 33
14	8 28	6 28	30	8 33	6 42
15	9 58	7 17			
16	10 27	8 20			

HIGH TIDES::OCTOBER.

D	Morn's	Even'g	D	Morn's	Even'g
1	9 40	7 52	17	11 30	10 13
2	10 58	8 53	18	11 23	10 50
3	11 27	9 49	19	11 45	11 32
4	0 58	10 50	20		0 12
5	0 40	11 40	21	0 31	0 14
6	1 16	1 16	22	1 4	0 34
7	0 50	1 07	23	0 56	0 51
8	1 56	1 24	24	2 11	1 21
9	2 55	1 55	25	3 47	1 54
10	3 18	2 47	26	4 48	2 57
11	3 36	3 43	27	5 57	3 31
12	4 54	4 54	28	7 5	4 22
13	6 15	5 29	29	8 58	5 11
14	7 17	6 17	30	9 58	6 11
15	8 54	7 17	31	10 58	7 46
16	10 31	9 17			8 54

ALMANAC FOR 1869.



Thursday, January 7, 1869.

November.

MOON'S PHASES.

New Moon, 3d. 3h. 25m. A.
 First Quarter, 10d. 6h. 45m. A.
 Full Moon, 18d. 11h. 8m. M.
 Last Quarter, 26d. 10h. 4m. M.

December.

MOON'S PHASES.

New Moon, 3d. 2h. 31m. M.
 First Quarter, 10d. 3h. 1m. A.
 Full Moon, 18d. 3h. 40m. A.
 Last Quarter, 25d. 6h. 23m. A.

D M	D W	Sun Rises h m	Sun Sets h m	Days' Length h m	Moon R & S h m
1	Mo	6 26	5 1	10 35	3 29
2	Tu	6 27	5 0	10 33	4 41
3	We	6 28	4 59	10 31	5 53
4	Th	6 29	4 58	10 29	sets
5	Fr	6 30	4 57	10 27	6 45
6	Sa	6 31	4 56	10 25	7 35
7	Su	6 32	4 56	10 23	8 29
8	Mo	6 33	4 54	10 21	9 25
9	Tu	6 34	4 54	10 20	10 23
10	We	6 36	4 53	10 17	11 21
11	Th	6 37	4 52	10 15	morn
12	Fr	6 38	4 51	10 13	0 19
13	Sa	6 39	4 50	10 11	1 17
14	Su	6 40	4 49	10 9	2 14
15	Mo	6 41	4 48	10 7	3 8
16	Tu	6 42	4 48	10 6	4 4
17	We	6 43	4 47	10 4	5 0
18	Th	6 44	4 46	10 2	5 57
19	Fr	6 45	4 46	10 1	rises
20	Sa	6 46	4 45	9 59	6 10
21	Su	6 47	4 45	9 58	6 57
22	Mo	6 48	4 45	9 57	7 50
23	Tu	6 49	4 44	9 55	8 48
24	We	6 50	4 43	9 53	9 51
25	Th	6 51	4 43	9 52	10 56
26	Fr	6 52	4 42	9 50	morn
27	Sa	6 53	4 42	9 49	0 4
28	Su	6 54	4 42	9 48	1 12
29	Mo	6 55	4 42	9 47	2 21
30	Tu	6 56	4 41	9 45	3 31
...

D M	D W	Sun Rises h m	Sun Sets h m	Days' Length h m	Moon R & S h m
1	We	6 57	4 41	9 44	4 42
2	Th	6 58	4 41	9 43	5 52
3	Fr	6 59	4 41	9 42	7 2
4	Sa	7 0	4 41	9 41	sets
5	Su	7 1	4 41	9 40	7 9
6	Mo	7 2	4 41	9 39	8 8
7	Tu	7 3	4 41	9 38	9 7
8	We	7 4	4 41	9 37	10 6
9	Th	7 4	4 41	9 37	11 5
10	Fr	7 5	4 42	9 37	morn
11	Sa	7 6	4 42	9 36	0 2
12	Su	7 7	4 42	9 35	0 57
13	Mo	7 7	4 42	9 35	1 53
14	Tu	7 8	4 43	9 35	2 49
15	We	7 8	4 43	9 35	3 46
16	Th	7 9	4 44	9 35	4 45
17	Fr	7 10	4 44	9 34	5 45
18	Sa	7 11	4 45	9 34	6 44
19	Su	7 11	4 45	9 34	rises
20	Mo	7 12	4 45	9 33	6 41
21	Tu	7 12	4 45	9 33	7 44
22	We	7 13	4 46	9 33	8 49
23	Th	7 13	4 46	9 33	9 56
24	Fr	7 14	4 47	9 33	11 3
25	Sa	7 14	4 48	9 34	morn
26	Su	7 14	4 48	9 34	0 11
27	Mo	7 15	4 49	9 34	1 19
28	Tu	7 15	4 49	9 34	2 27
29	We	7 15	4 50	9 35	3 35
30	Th	7 16	4 51	9 35	4 44
31	Fr	7 16	4 51	9 35	5 50

HIGH TIDES :: NOVEMBER.

D	Morn'g	Even'g	D	Morn'g	Even'g
1	10 44	9 55	17	10 52	11 42
2	11 19	10 57	18	11 13	
3	11 50		19	0 38	11 28
4	0 36	11 34	20	1 28	11 41
5	1 48	0 42	21	2 7	0 52
6	2 58	0 40	22	2 59	0 44
7	3 58	1 11	23	3 44	1 30
8	4 18	2 13	24	4 34	2 40
9	5 24	3 20	25	5 28	3 57
10	6 32	4 44	26	6 31	5 17
11	7 24	5 50	27	7 34	6 33
12	8 15	7 11	28	8 28	7 44
13	8 56	8 6	29	9 8	8 58
14	9 34	9 10	30	9 47	10 11
15	10 2	10 6			
16	10 27	10 43			

HIGH TIDES :: DECEMBER.

D	Morn'g	Even'g	D	Morn'g	Even'g
1	10 21	11 13	17	10 20	
2	10 47		18	0 29	10 47
3	0 10	10 44	19	1 13	11 32
4	1 16	11 22	20	1 57	11 48
5	2 16	0 16	21	2 48	0 32
6	3 48	1 6	22	3 31	1 25
7	3 50	2 21	23	4 13	2 31
8	4 48	3 43	24	5 6	3 31
9	5 32	4 18	25	6 5	4 27
10	6 24	5 34	26	6 52	5 10
11	7 15	6 40	27	7 43	6 27
12	7 45	7 49	28	8 41	7 27
13	8 19	8 51	29	9 22	8 48
14	9 17	9 33	30	10 11	10 58
15	9 42	10 32	31	10 32	11 58
16	10 6	11 32			

Friday, January 8, 1869.

Saturday, January 9, 1869.

Gatewood to night says
 he wrote to Sweeting
 about 3 weeks ago
 to Clark & Inatell

LOW TIDES, NOVEMBER. HIGH TIDES, DECEMBER.

Day	Time	Day	Time
Nov 1	10 30	Dec 1	10 30
Nov 2	10 30	Dec 2	10 30
Nov 3	10 30	Dec 3	10 30
Nov 4	10 30	Dec 4	10 30
Nov 5	10 30	Dec 5	10 30
Nov 6	10 30	Dec 6	10 30
Nov 7	10 30	Dec 7	10 30
Nov 8	10 30	Dec 8	10 30
Nov 9	10 30	Dec 9	10 30
Nov 10	10 30	Dec 10	10 30
Nov 11	10 30	Dec 11	10 30
Nov 12	10 30	Dec 12	10 30
Nov 13	10 30	Dec 13	10 30
Nov 14	10 30	Dec 14	10 30
Nov 15	10 30	Dec 15	10 30
Nov 16	10 30	Dec 16	10 30
Nov 17	10 30	Dec 17	10 30
Nov 18	10 30	Dec 18	10 30
Nov 19	10 30	Dec 19	10 30
Nov 20	10 30	Dec 20	10 30
Nov 21	10 30	Dec 21	10 30
Nov 22	10 30	Dec 22	10 30
Nov 23	10 30	Dec 23	10 30
Nov 24	10 30	Dec 24	10 30
Nov 25	10 30	Dec 25	10 30
Nov 26	10 30	Dec 26	10 30
Nov 27	10 30	Dec 27	10 30
Nov 28	10 30	Dec 28	10 30
Nov 29	10 30	Dec 29	10 30
Nov 30	10 30	Dec 30	10 30
Nov 31	10 30	Dec 31	10 30

Friday, March 5, 1869.

oil Ambers 2 oz
Wormwood 2 oz
Sage 2 oz
Gum Camphor 2 oz
Spirits Arnica 2 oz
Alcohol 1 pint

Mix in quart bottle

Will cure Rheumatism
A. W. Scoble

Horn Liniment

Saturday, March 6, 1869.

Wednesday, May 12, 1869.

111 m 3^d day

Saturday, May 15, 1869.

Thursday, June 17, 1869.

Moved to day some of the
Goods & Material of
the Express office
to New San Diego.

I on the ¹⁸ went
ourselves to New Town

Tuesday, June 22, 1869.

~~C. A. Wetmore
50 Cash \$100 =~~

Wednesday, June 23, 1869.

Articles & tools belonging to
me left loose in Hester's
barn

2 Axes

1 Hand axe

2 Forks

✓ 1 L. H. Spade

✓ 2 J. H. "

✓ 1 Garden Hoe

✓ 1 " Hoe - Rake

2 Picks

✓ 1 Small steel bar

✓ 1 Saw

✓ 1 Saddle Coco

20 or 30 burl sacks

✓ 1 Lantern

✓ 1 shovel

4 Water Pails

1 Small monkey Wrench

✓ 1 Hatchet

✓ 1 Garden Trowel

✓ 1 Rake Iron 12 teeth

Thursday, June 24, 1869.

Thursday, July 1, 1869.

Paid for Masonic Dinner
(\$8.50)

Masonic Dinner
to Wallace

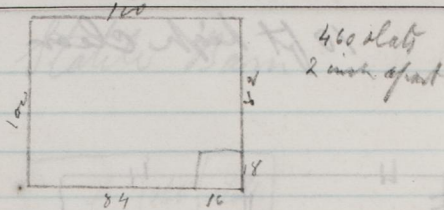
Friday, July 2, 1869.

Friday, August 20, 1869.

Saturday, August 21, 1869.

Was Morse gone & lots
to day for a Horse
to Mr. Caglanth.

Wednesday, September 15, 1869.



20 slats to 48 feet

2-course

184 feet slat = 460 slats

182 " Boards 6 ft high = 1072 = 385

46 posts 12

366 feet rails 2x3 12

184 " Board bottom 675

184

192

366

$\frac{2}{732}$ ft length of rails 3x4 = 732

Bottom Board 184

46 Posts 4x4 172

Eight Boards 5 feet high }

182 feet in length say $5\frac{1}{3}$ } 970

20558 @ 32 = fence = \$65.85

Thursday, September 16, 1869.

M. M.

Box stall 9-6 x 11-6
see page 92 Wood. Archi.

Stairs ^{tree} 7 x 9 1/2 size

I think 7 tread x 10 rise
will do

Upper stairs in Wind Mill
are 4 3/4 tread x 9 rise

2 men worked 6 days
on the fence

Friday, September 17, 1869.

Depth of Northern stall
is 7-6

It could be 2 feet
narrower
that is $3\frac{1}{2}$ feet

So that if a stall
is 8 feet it will
answer for two
occasionally

North narrowest stall is 4-6 wide
and 6 feet deep

Eight boards 5 feet high

182 feet in length say $5\frac{1}{2}$

$182 \times 5\frac{1}{2} = 1001$

Saturday, September 18, 1869.

A great day for San Diego

Gov Seward

Gen^l Moneman

" Hunter

Col Sedgewick

L. B. Axtel

Roots

all arrived to day

Saturday, September 25, 1869.

Told North that I
would sell about 80 m^{ns}
for \$10 if with cotts \$13⁰⁰
50. to be picked out

Sunday, September 26, 1869.

Pooles Wife was
- Daniels

Ken father kept a
Butcher shop in Salem
in 1857.
has several fathers daughters

Sent out 30/69
to C. O. Moore

Saturday, December 4, 1869.

Land quieting paper

met at J. S. Mammun. Stein
Cleveland Wetmore Sedgwick
More & Schiller Water by
More proxy

electd Wetmore
Tracy & Sherman
Committee

Must raise about
\$1000. & loads to fee
lobbyists &c

Wetmore says

Mc-Coy is with us
Kato is afraid of Taggart

Cleaveland says ^{Ca} Johnson
opposes everything wants
to fight it out by law
suits.

Sunday, December 5, 1869.

MEMORANDA.

Date.	Directors	Dollars.	Cts.
1	Cleveland		
2	Gatewood		
3	Horton		
4	Lyon		
5	Mannopfe		
6	Morse		
7	Pascoe		
8	Pendleton		
9	Robinson		
10	Rose		
11	Sloan		
12	Whaley		
13	Witherby		

Standing Committee

Finance { Gatewood
Robinson
Whaley

Surveys & Location { Morse
Horton
Pascoe

Printing { Rose
Mannopfe
Pendleton

Assessments { Witherby
Rose
Cleveland

Correspondence { Morse
Gatewood
Whaley

Special Com^{tee} on Lands { Rose
Horton
Pascoe
Morse
Lyon

STAMPS.

Though we have for some time been living under the rule of stamps, the question is one of every day asking: "How much of a stamp does this require?" The following embraces, it is said, the most general use of stamps as applied to manufacturers and particular classes of business that pay special tax:

"All notes and evidences of debt, five cents on each \$100; if under \$100, five cents; if over \$100, five cents on each \$100 or part thereof. All receipts for any amount, without limit, over \$20, two cents; if under \$20, nothing. Checks of any amount, two cents. All deeds and deeds of trust, five cents on each \$500 in value of the property conveyed or the amount secured; when a deed of trust is fully stamped the note secured need not be; but they should be endorsed to show the reason why. Mortgage bonds need not be stamped if stamps are affixed to the mortgage. All the appraisements, estates or estrays, five cents on each piece of paper. Affidavits of every description are exempt from stamp duty. Acknowledgments to deeds, etc., are also exempt. Contracts and agreements, five cents on each sheet or piece of paper, except for rents, or when for rent, fifty cents for each \$300 of rent or less; if over \$300, fifty cents for each additional \$200 or fractional part thereof in excess of \$300. Any person interested can affix or cancel stamps."

