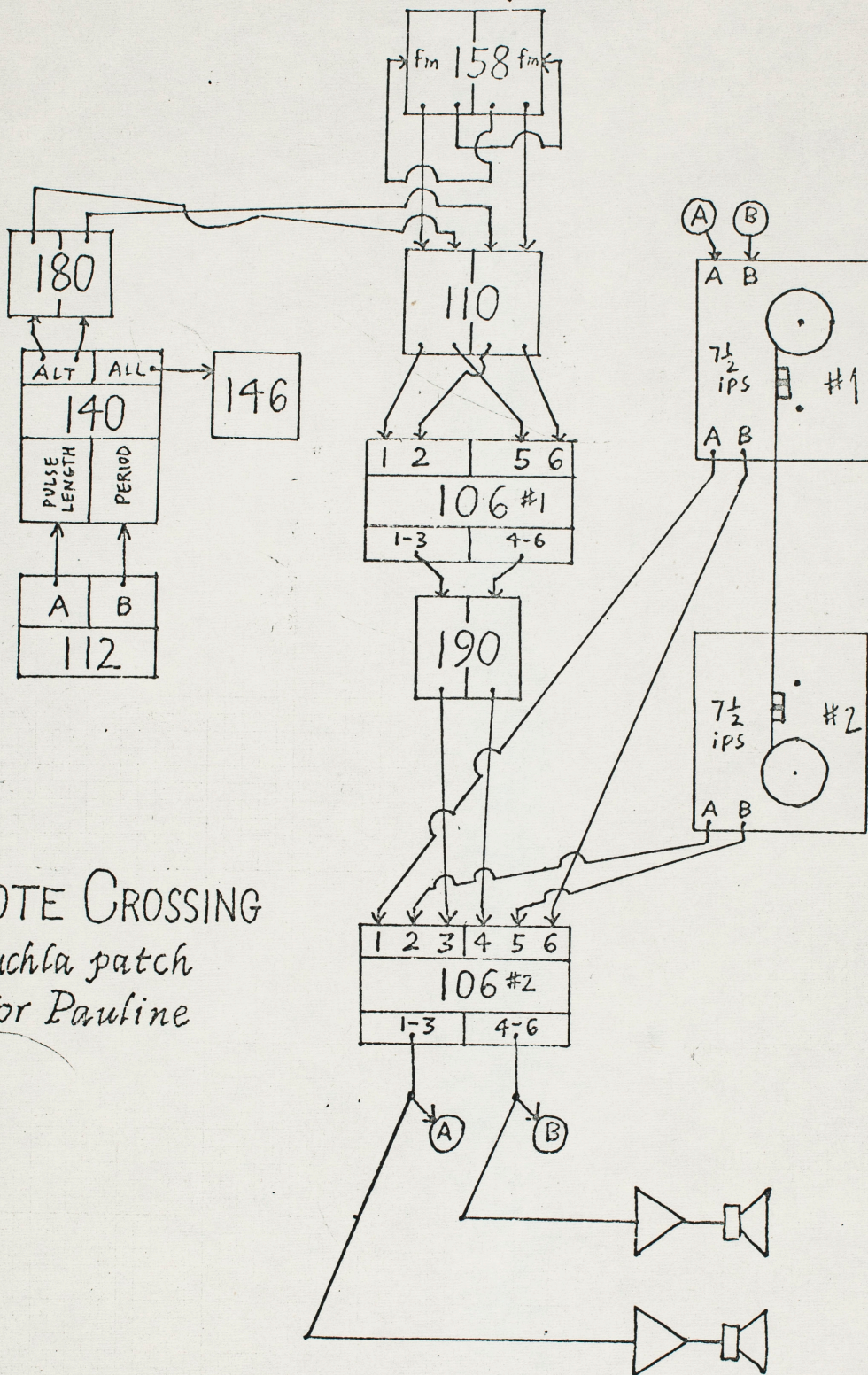
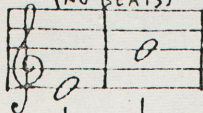


TUNING FOR 158
(NO BEATS)



2 stereo
Tape recorders
with separate
record and
playback
heads,
spaced for
6 to 8 second
tape delay.

COYOTE CROSSING
a Buchla patch
for Pauline

CHARLIE BUEL
9-2-70

C. BUEL: COYOTE CROSSING
INSTRUCTIONS, PAGE 1 OF 2

- ① Silently set up equipment & do patch according to diagram.
- ② Set pots on 112 for a variety of pulse length & period combinations, using lights of 146 as a guide.
- ③ Hold 110 open to let constant signals from the 158 through.
- ④ Using a pitch pipe, tuning fork or reasonably in tune instrument as a guide, tune the left half of the 158 to e'. Then tune the right half to b' by ear, until you have a perfect fifth (no beats). The 158 should be giving out sine waves with no frequency modulation, at a gentle dynamic level. The exact pitch of the perfect fifth is not important but it should be close to e' & b'.
- ⑤ Slowly increase loudness and frequency modulation until both are near maximum & set recording levels on tape recorder #1.
- ⑥ Start pulsing the 110
- ⑦ Start tape recorders - #1 recording & playing back, #2 playing back only.
- ⑧ Slowly introduce delayed signals via 106#2, making adjustments in the overall output loudness as necessary to control feedback.

Improvise, using modules as follows

- 106 #1: Vary pot settings (crossover system)
- 106 #2: Vary pot settings. Use feedback as a timbral resource.
- 110: set pots at or near maximum & leave them alone.
- 112: Vary pot settings
- 140: Leave it alone
- 146: Strictly visual
- 180: Vary attack & decay times; leave note length externally controlled.

C. BUEL: COYOTE CROSSING
INSTRUCTIONS, PAGE 2 OF 2

158: Vary waveform and amount of frequency modulation.

At some point in the piece do rhythmic things by flicking the internal-external control switch up & down. Do not leave it on external control for more than a second or two. Do not change internal ~~for~~ frequency pot settings once they have been turned.

190: Vary amount of reverb

Slow changes in settings

Fast changes in settings

Simultaneous changes affecting

different parameters as well as changes in one parameter.

Keep it moving, flowing, shifting

Do not repeat a section. Start

simple & expand the vocabulary.

End with a fade between 30 seconds

& a minute long, as the tape is running out.

PLAYERS SHOULD EXCHANGE POSITIONS IF THEY WISH
SO THAT EVERYONE CAN DO WHAT HE WANTS. OR
USE FIXED POSITIONS IF CHANGING POSITIONS IS
INCONVENIENT. DEPENDS ON THE AMOUNT OF
TAPE USED (THE LENGTH OF THE PIECE), TOO.