

*Report and Index of
Underway Marine geophysical Data*

Vancouver Expedition

Leg 06

(VANC06MV)

R/V Melville

(Issued Mar 2003)

Ports:

Capetown, South Africa (02-JAN-03)
to
Capetown, South Africa (16-JAN-03)

Chief Scientist: Deidre Byrne
University of Maine
dbyrne@umeoce.maine.edu

Computer Tech - Dan Jacobson
Resident Tech - Gene Pillard

Post-Cruise processing and report preparation by the
Shipboard Technical Support Group,
Scripps Institution of Oceanography
La Jolla, CA 92093-0223

Note: *This is an index of underway geophysical data edited and processed after the completion of the leg and is intended primarily for informal use within the institution. This document is not to be rereduced or distributed outside Scrips without prior approval of the chief scientist or Shipboard Technical Support, Scripps Institution of Oceanography, La Jolla, California 92093-0223*

STS Cruise ID#299

Report and index of Navigation and Underway Geophysical Data

Contents:

Index Chart - give track of cruise leg, dates, ports.

Track Charts - annotated with dates and hour ticks.

Profiles - depth, magnetic and gravity free air anomaly vs. distance. (Sections of track with seismic reflection data have a wide black line along the bottom of the profile.)

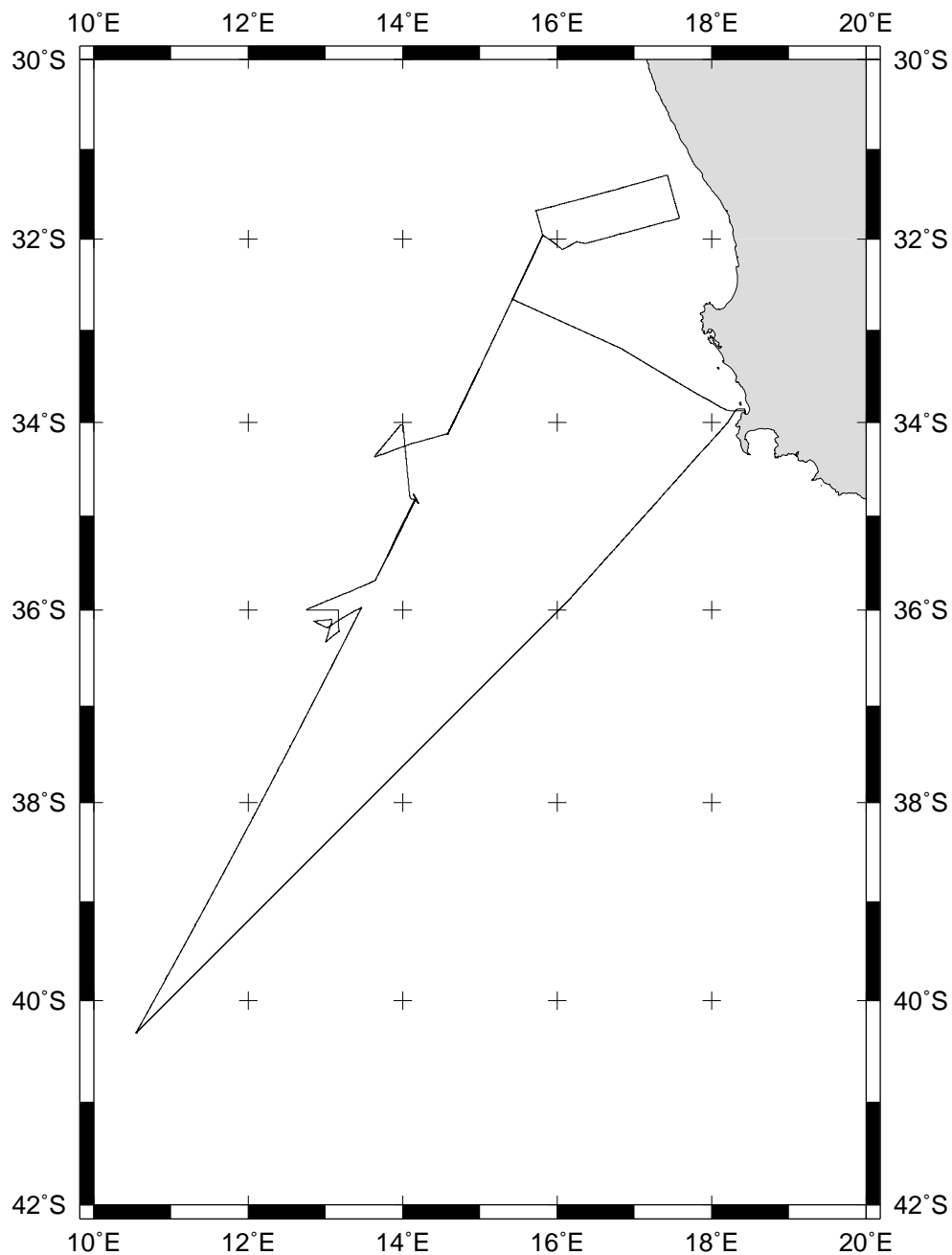
Sample Index - list of begin/end times and positions of all underway records as well as samples and measurements from other disciplines collected on the leg.

Note:

For information on the availability of this current digital data as well as archived digital data contact:

Stephen P. Miller
Geological Data Center
Scripps Institution of Oceanography
La Jolla, California 92093-0220
Phone: (858) 534-1898
Internet email: spmiller@ucsd.edu; or his website: <http://SIOExplorer@ucsd.edu>

Rev 05/2002



VANCOUVER EXPEDITION LEG 6 (VANC06MV)

=====

CHIEF SCIENTIST: Deidre Byrne, University of Maine

PORTS: Cape Town - Cape Town, South Africa

DATES: 2 - 16 January 2003

SHIP: R/V Melville

TOTAL MILEAGE OF UNDERWAY DATA COLLECTED

Cruise-2003 miles

Magnetics-none collected

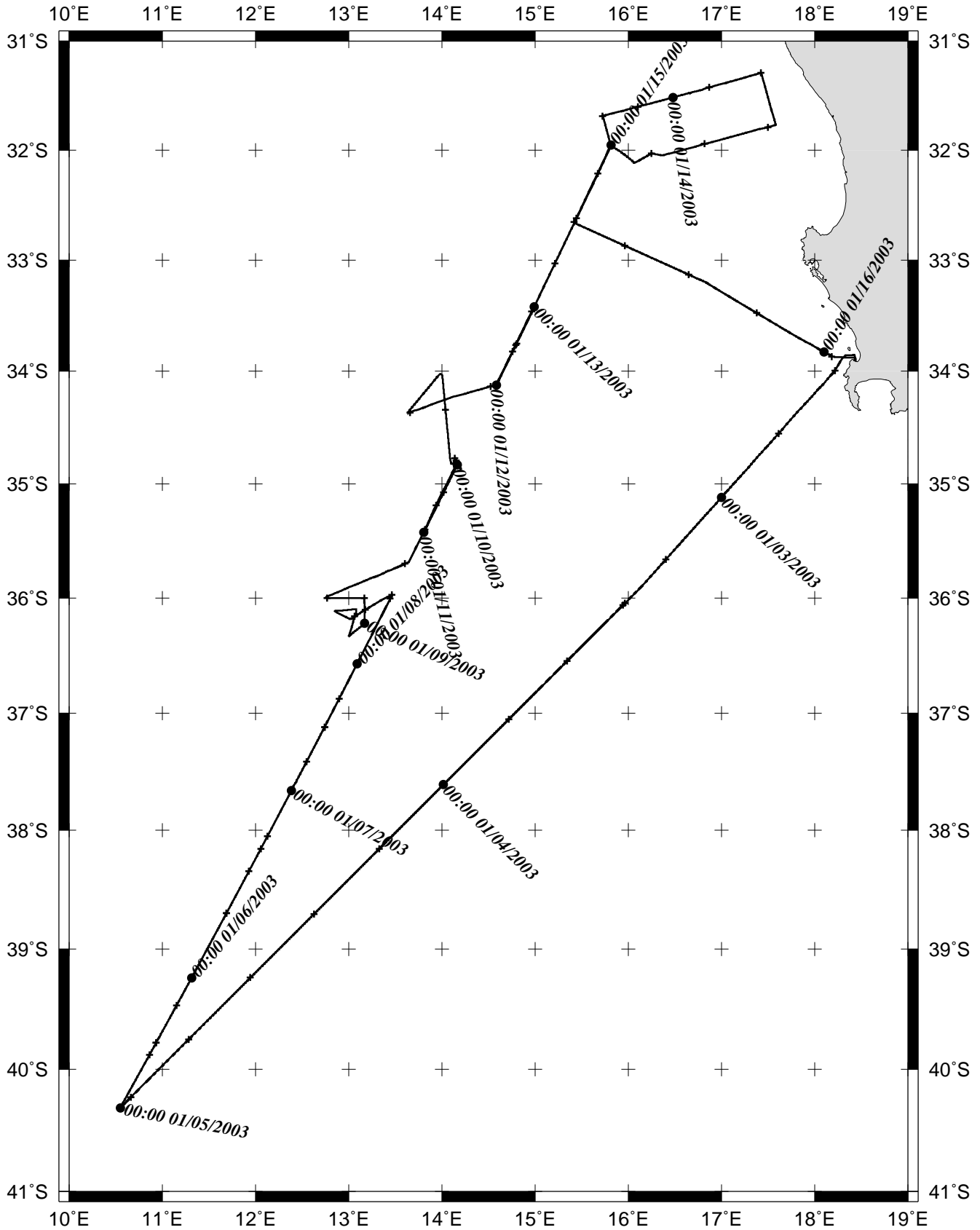
Bathymetry-1693 miles

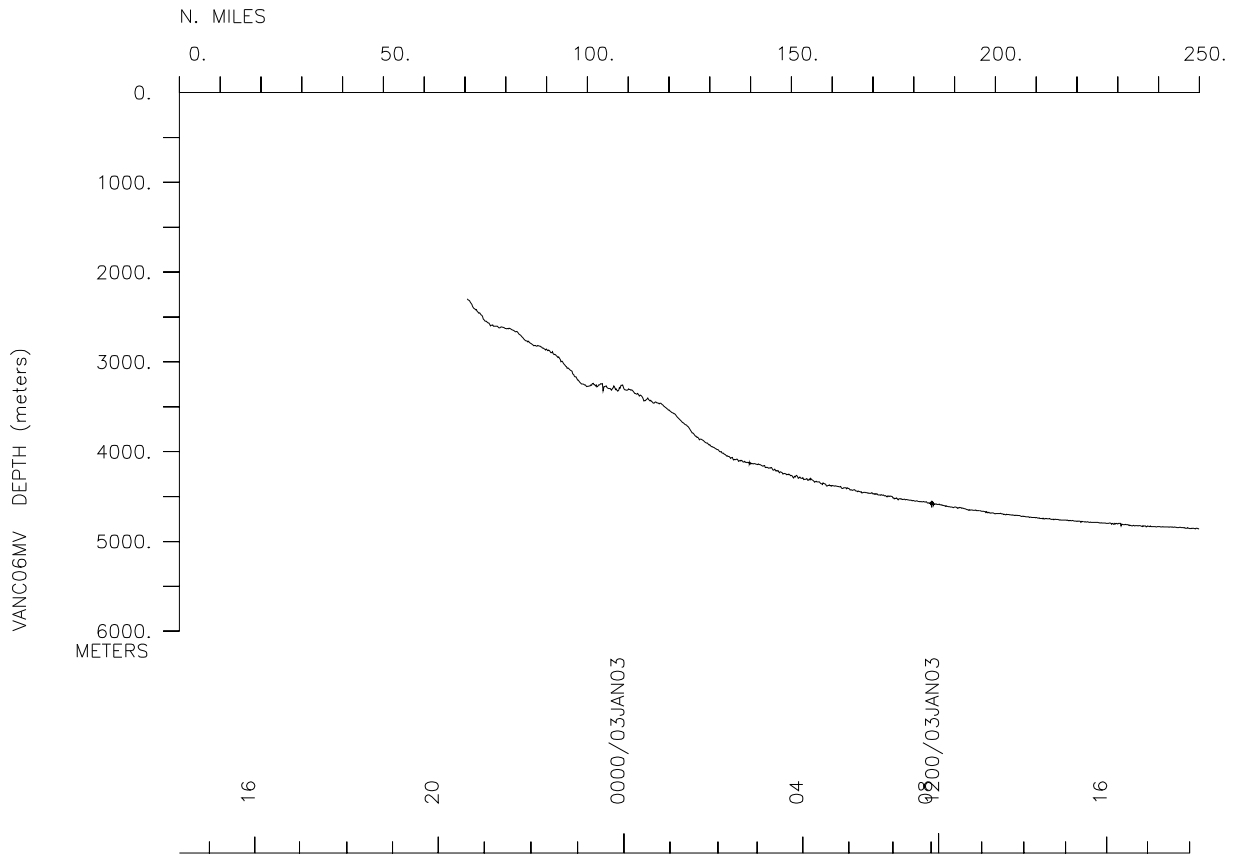
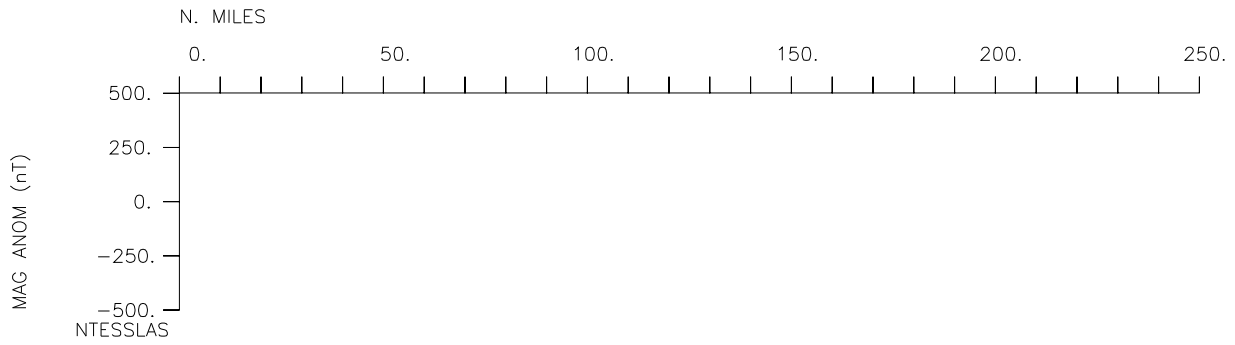
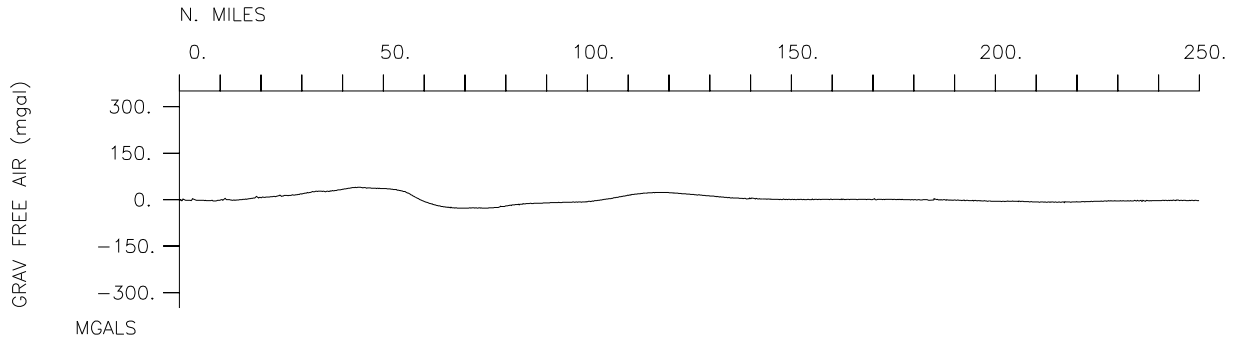
Seismic Reflection-none collected

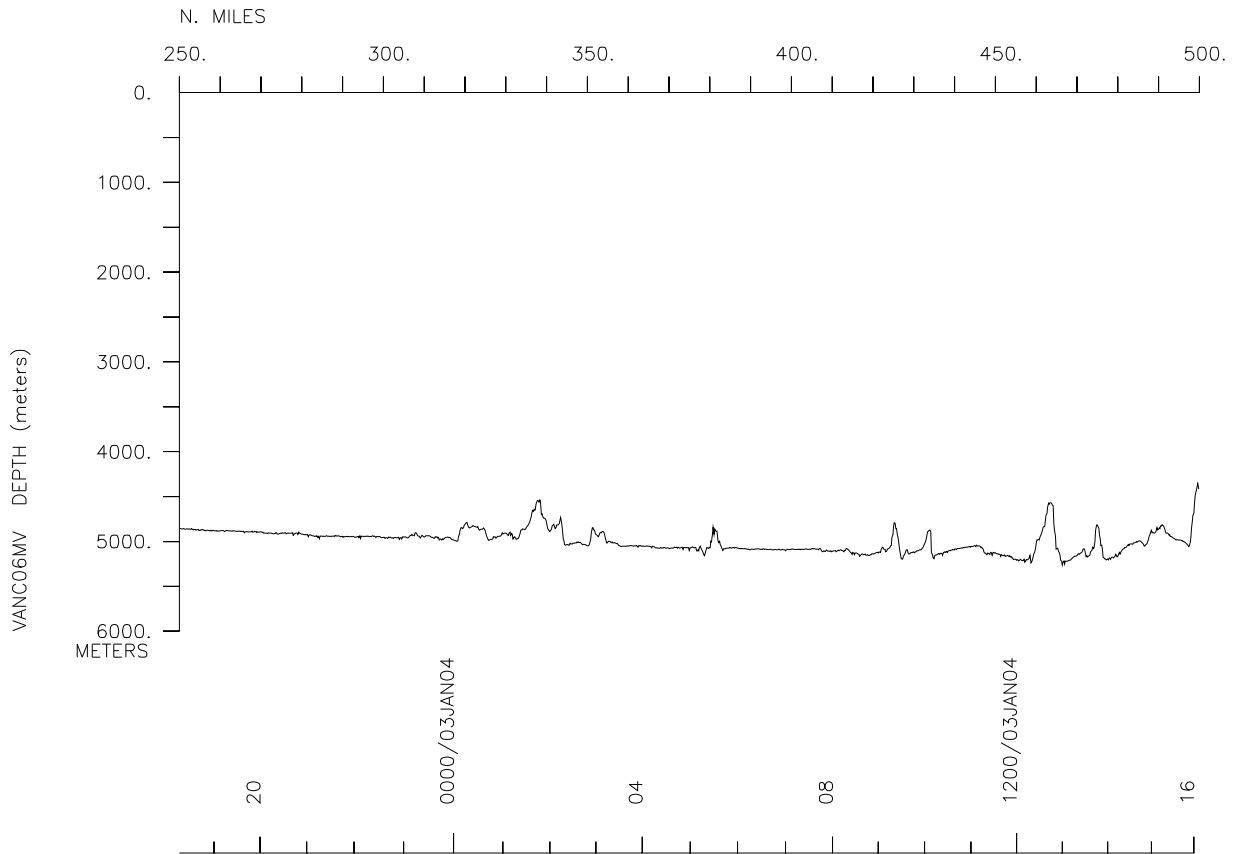
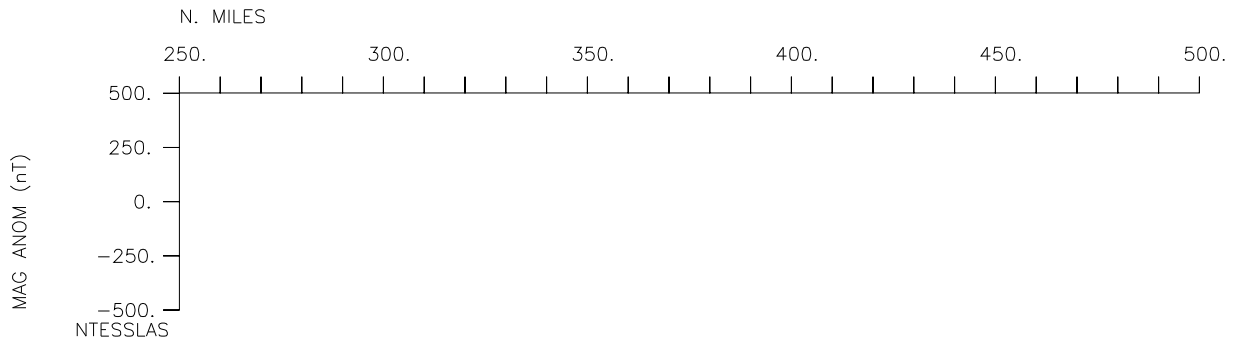
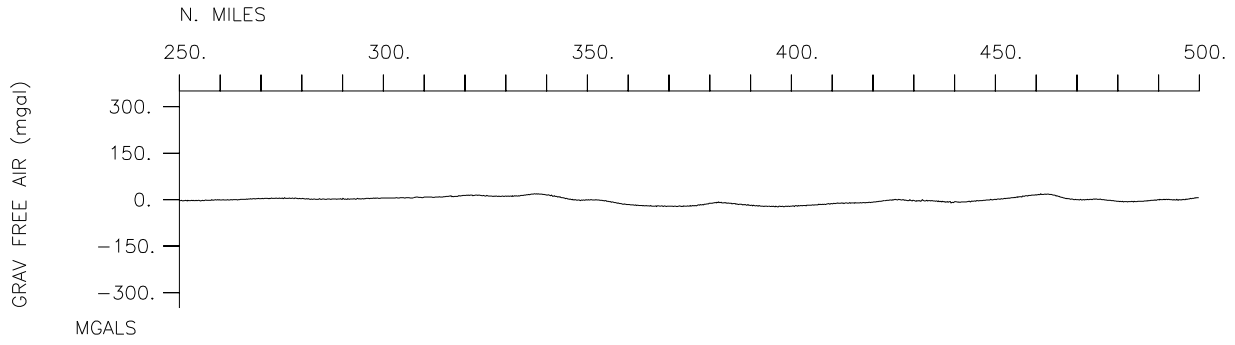
Multibeam-1693 miles

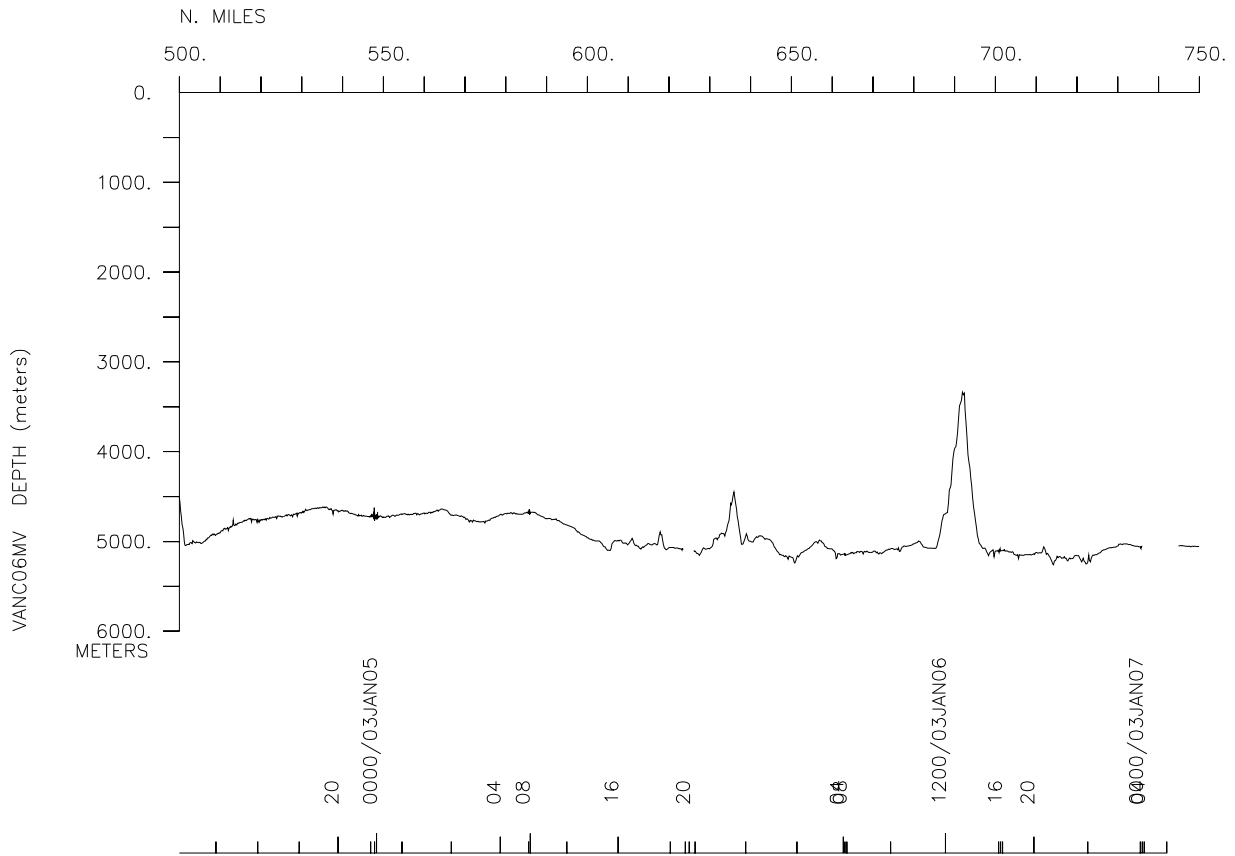
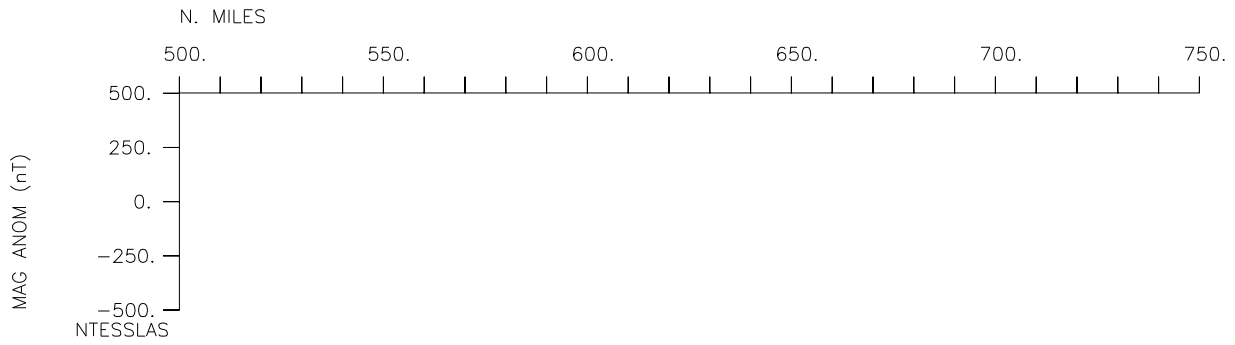
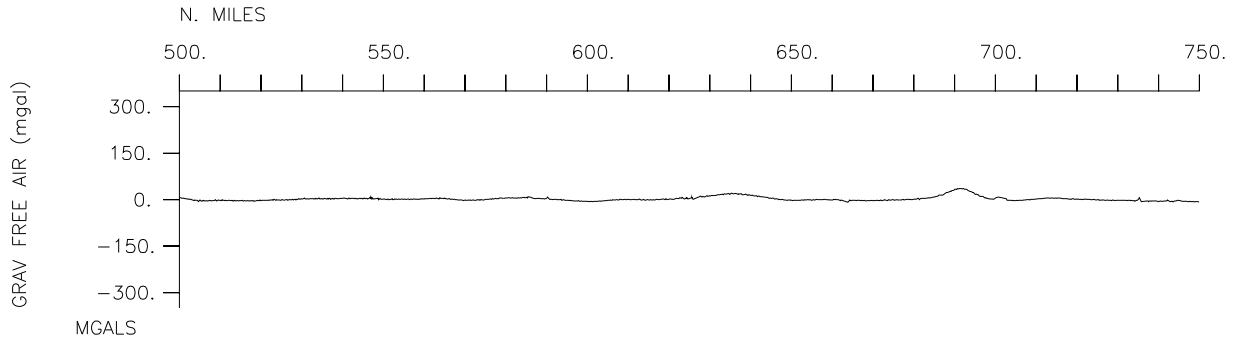
Gravity-2003 miles

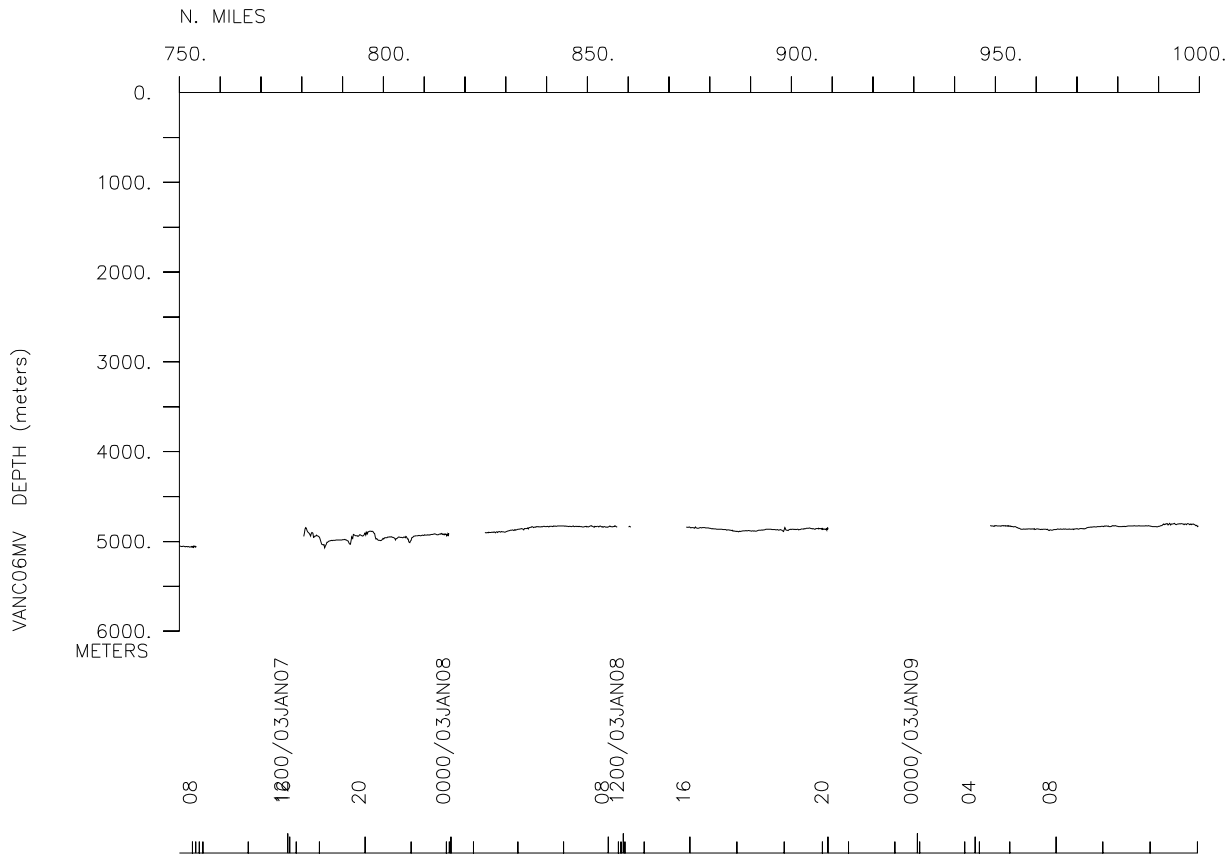
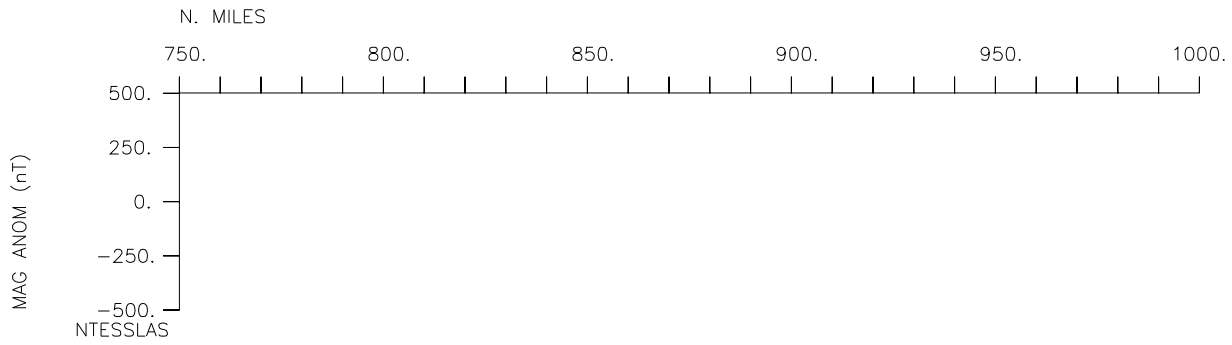
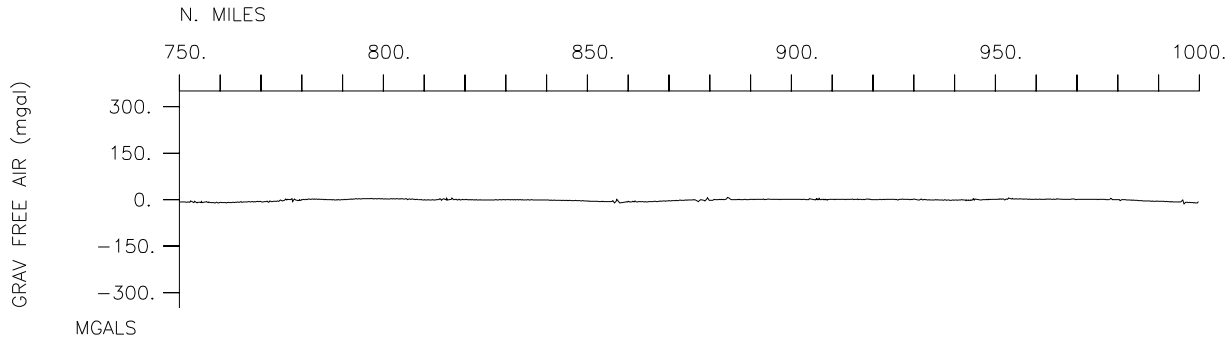
VANC06MV

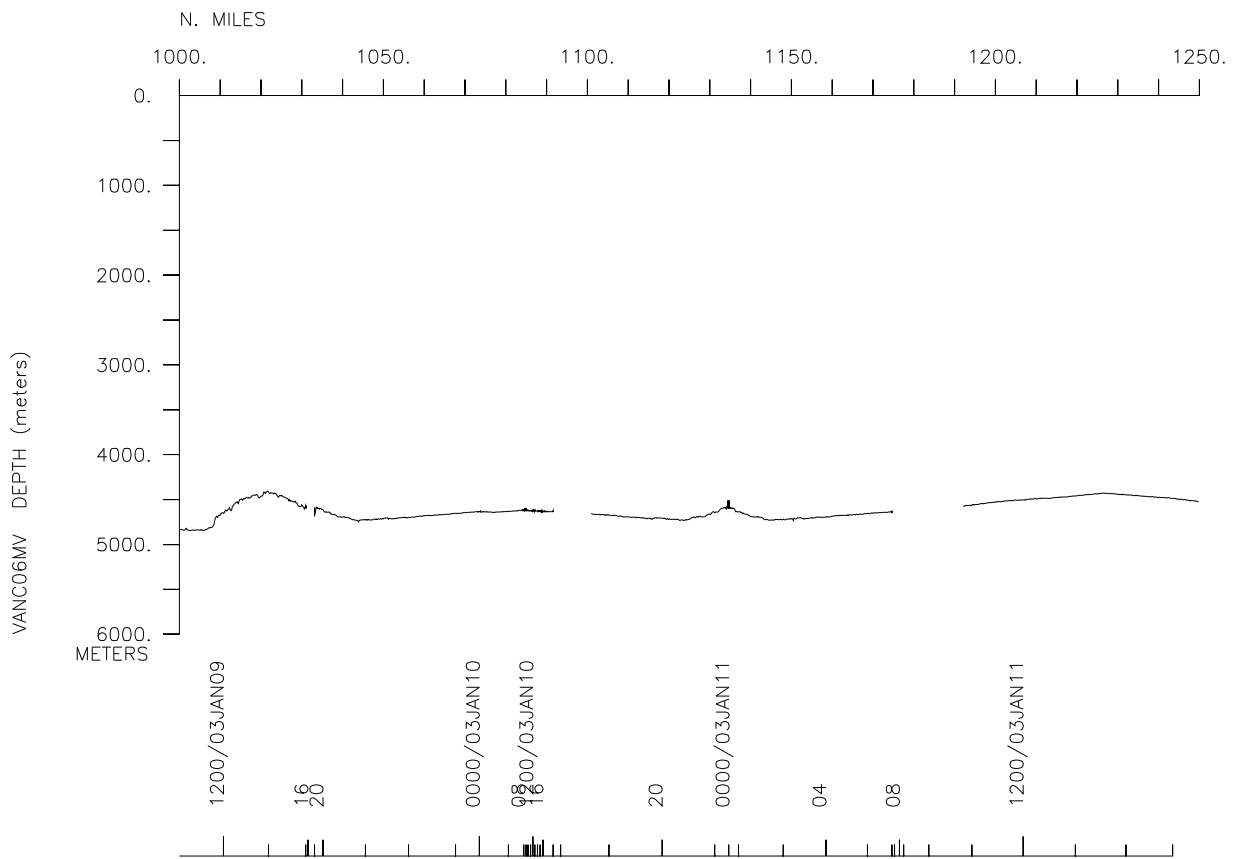
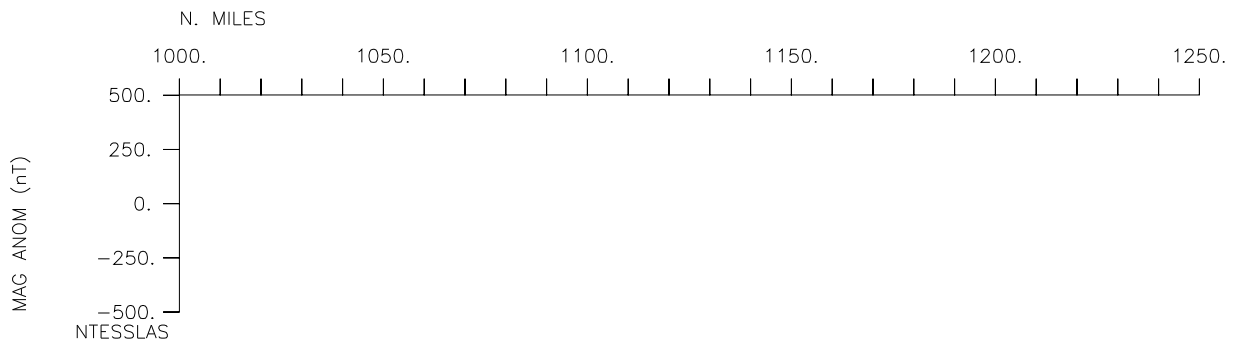
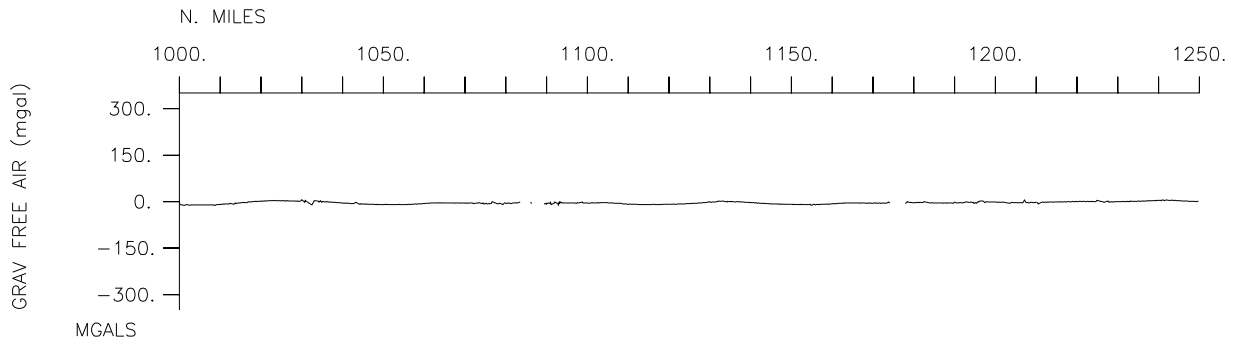


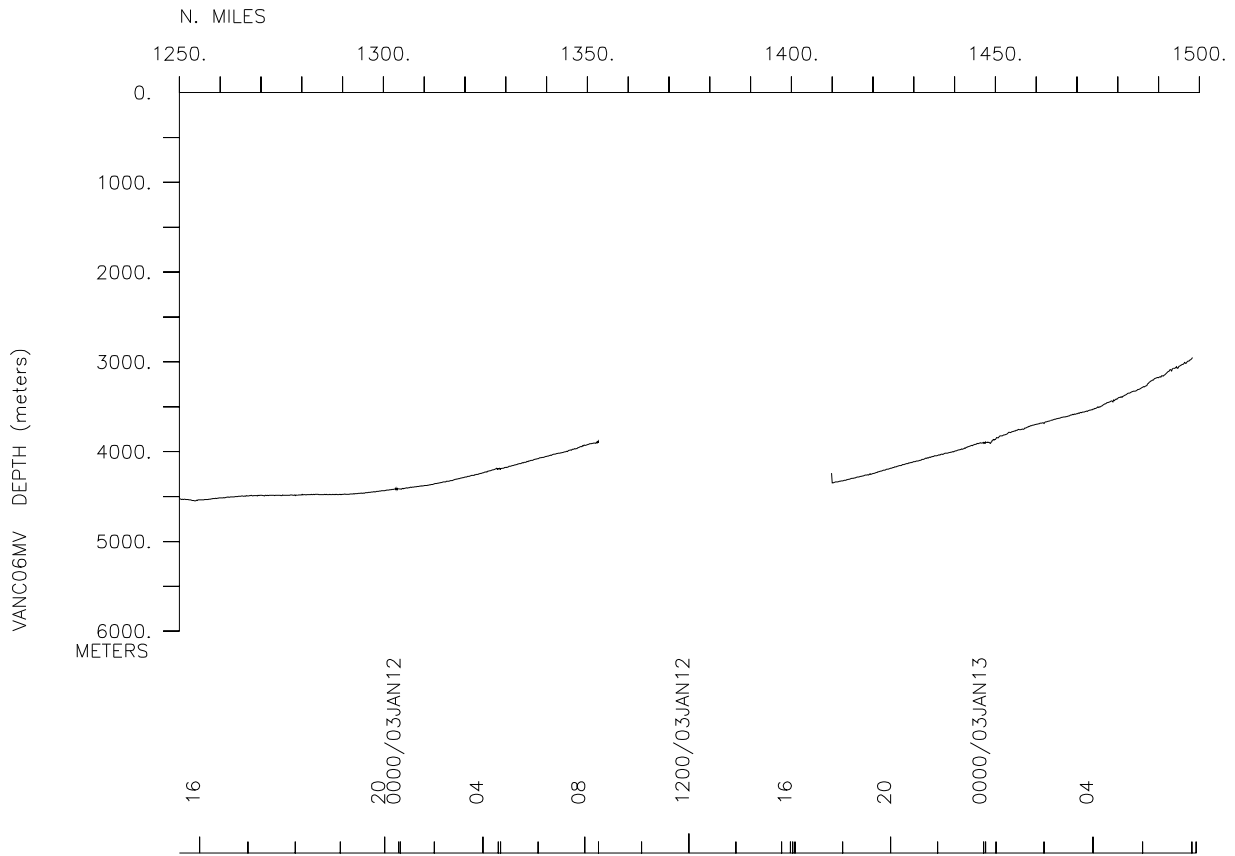
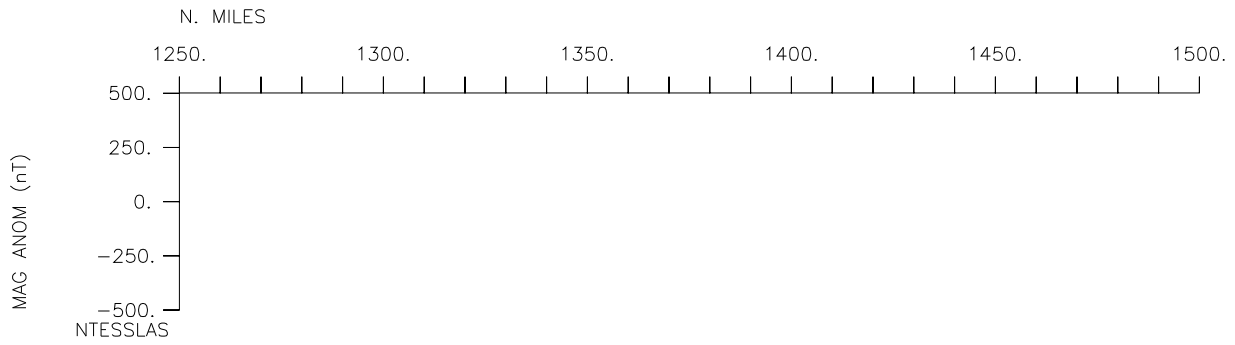
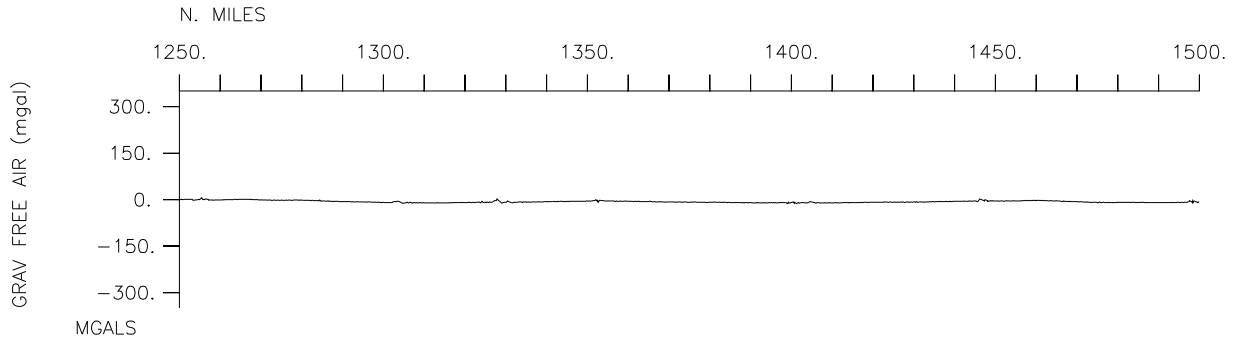


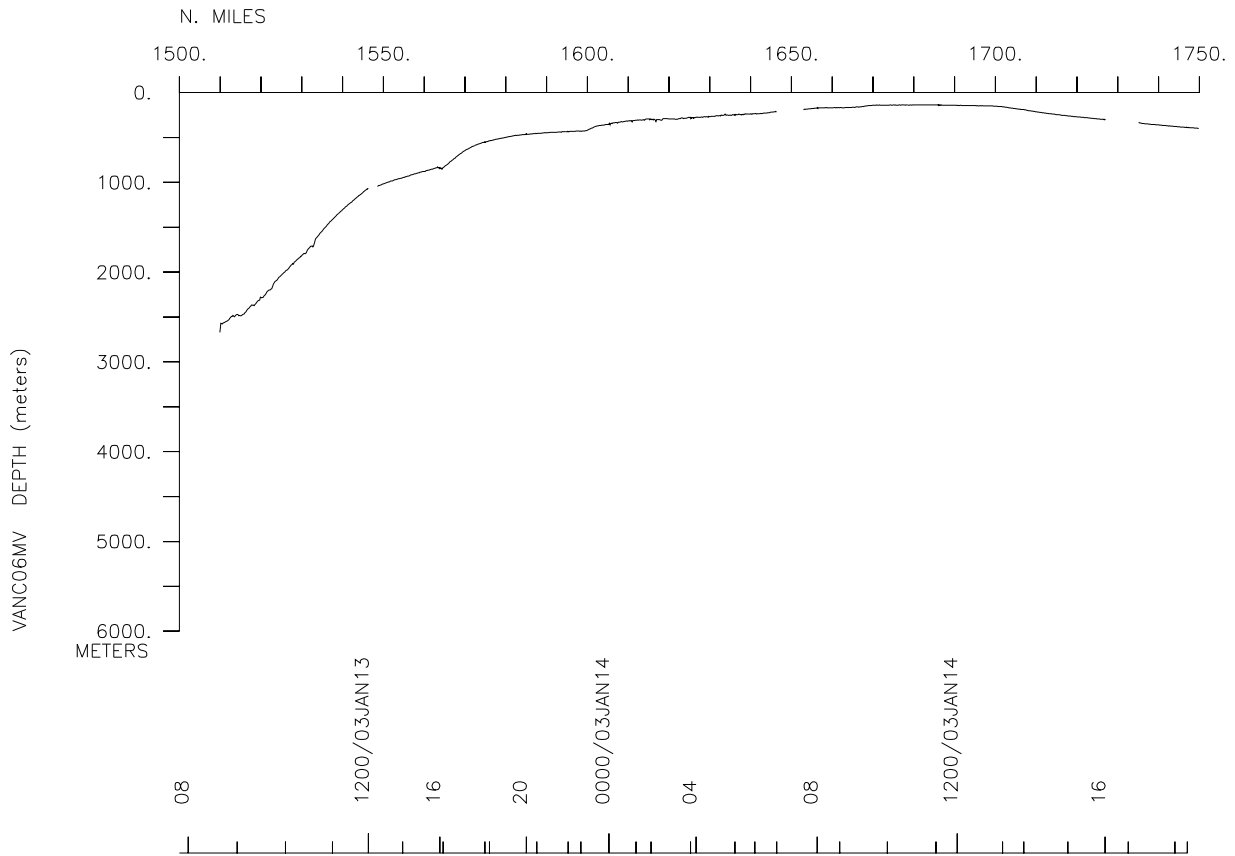
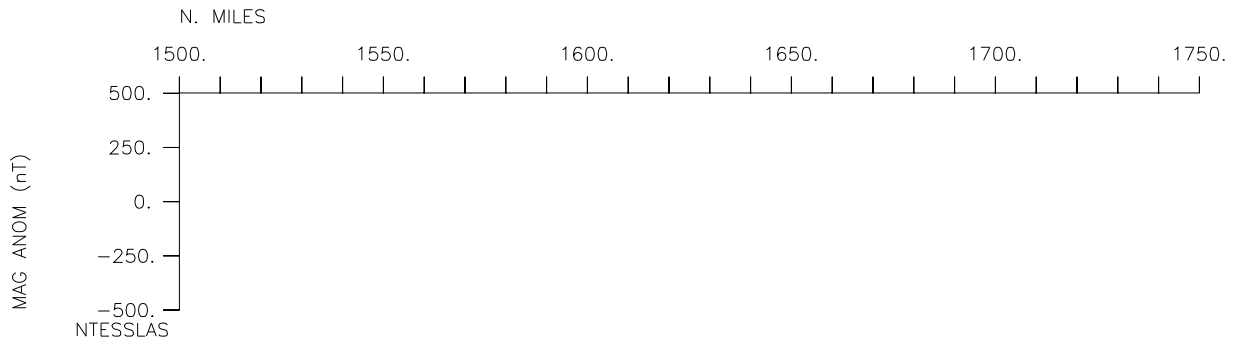
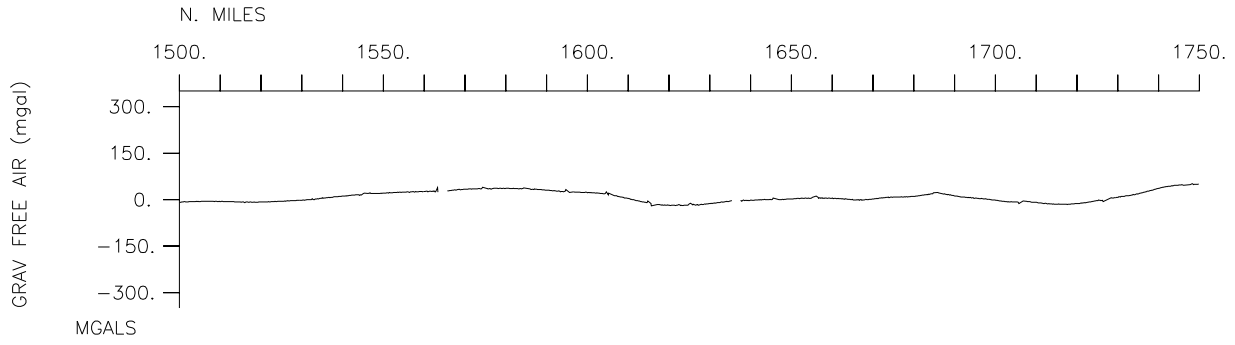


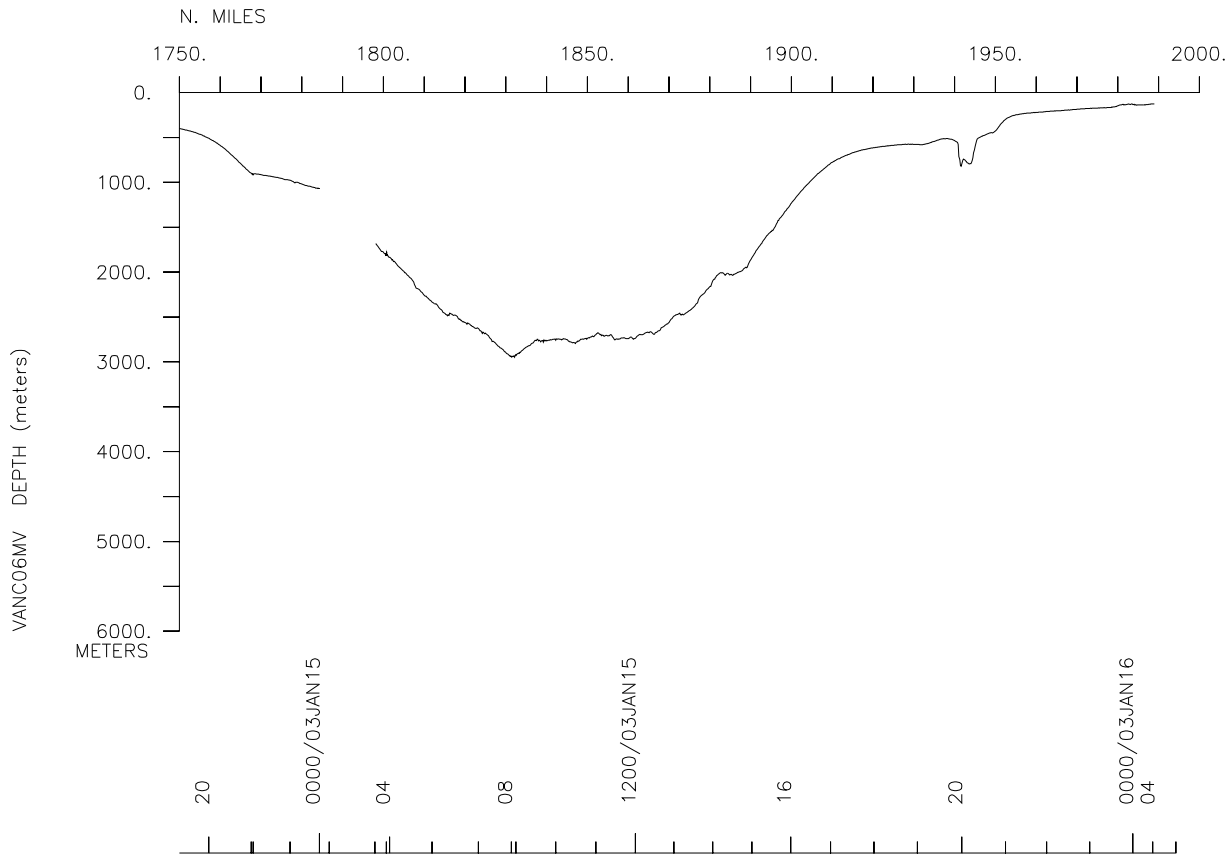
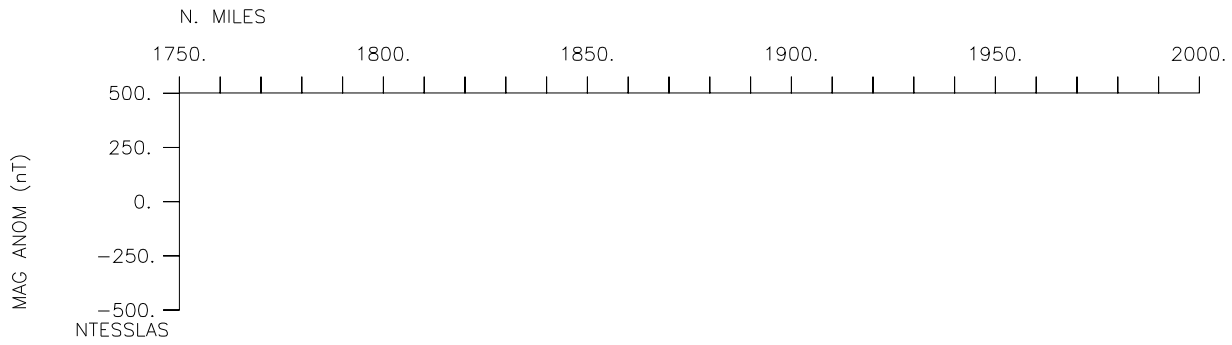
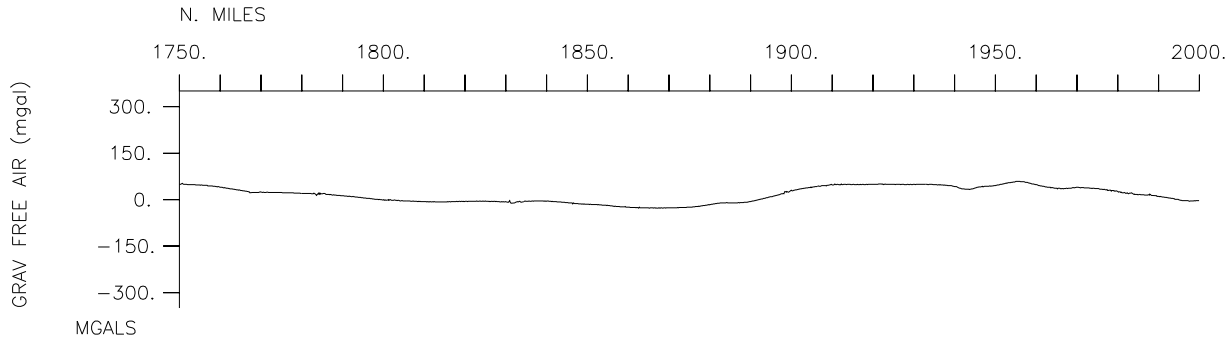


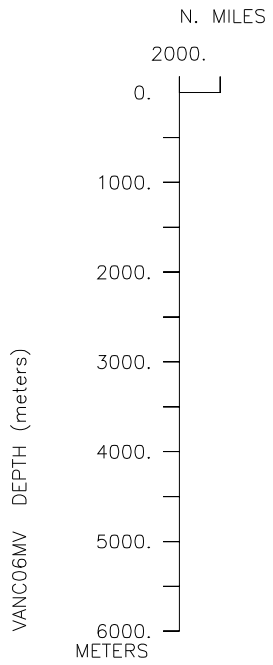
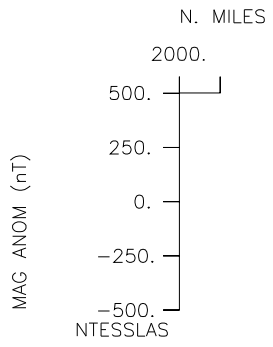
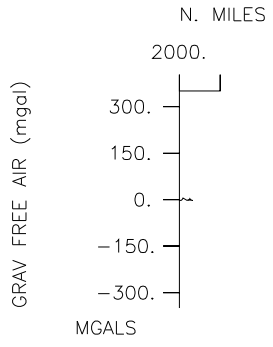












└

**** Ports ***

1406	020103	LGPT B	Capetown, South Africa	33-54.00S	18-26.00E	f	VANC06MV
0606	160103	LGPT E	Capetown, South Africa	33-54.00S	18-26.00E	f	VANC06MV

**** Personnel ***

#	*****NAME*****	*****TITLE*****	*****AFFILIATION*****	**CRID**
PECS SIX	Byrne,D.	Chief Scientist	Univeristy of Maine	VANC06MV
PESP SIX	Iita,A.F.	Scientist	MFMR Namibia	VANC06MV
PESP SIX	Pettigrew,N.	Scientist	Univeristy of Maine	VANC06MV
PESP SIX	Rae,C.D.	Scientist	MCM South Africa	VANC06MV
PESP URI	Watts.R.	Scientist	U. of Rhode Island	VANC06MV
PESP SIX	Frantz,F.	Technician	MCM South Africa	VANC06MV
PESP SIX	Mangum,L.	Technician	Univeristy of Maine	VANC06MV
PESP SIX	Roman,R.	Technician	Univ. of Cape Town	VANC06MV
PESP SIX	Titus,J.	Technician	MFMR Namibia	VANC06MV
PEST URI	Baker,S.	Grad student	Un. of Rhode Island	VANC06MV
PERT STS	Pillard,G.	Resident Tech	Scripps Institution	VANC06MV
PECT STS	Jacobson,D.	Computer Tech.	Scripps Institution	VANC06MV

**** NOTES ***

#An 'X' in the (B)egin/(E)nd column following the sample code indicates no #sample or data recovered. A 'C' indicates continuation of data collection #from before the beginning or after the end of a particular leg, (moored #bottom instruments, for example.) The number appearing in the columns #between the sample identifier and the disposition code, for many sample #entries, is the water depth in corrected meters.

**** Underway Data Curator - Shipboard Technical Support Group ext.41899 ***
 **** Digital Data Curator - Geological Data Center, S.P. Miller, ext.41898 ***

**** MultiBeam Data (vertical beam and side scan) ***

2038	020103	MBSR B	v.beam and sidescan	GDC		VANC06MV
0411	160103	MBSR E	v.beam and sidescan	GDC		VANC06MV

**** Digital Gravity ***

1345	020103	GVDD B	Digital Gravity	GDC		VANC06MV
0633	160103	GVDD E	Digital Gravity	GDC		VANC06MV

**** Integrated Meteorological Acquisition System ***

1345	020103	IMET B	Weather measurements	GDC		VANC06MV
0633	160103	IMET E	Weather measurements	GDC		VANC06MV

**** Acoustic Doppler Current Profiler ***

1345	020103	ADCP B	300khz Current meas.	GDC		VANC06MV
0633	160103	ADCP E	300khz Current meas.	GDC		VANC06MV

#GMT	DDMMYY	SAMP	B	SAMPLE	DISP				p	CRUISE
#TIME	DATE	TZ	CODE	E IDENTIFIER	CODE	LATITUDE	LONGITUDE		c	LEG-SHIP
#-----	---	---	---	-----	---	-----	-----	---	---	-----

**** Current Meters ****
 **** Samples shared between NOAA And U. of Maine ****

0244	030103		CMRT	B SOLO FLOAT #178	NOAA					VANC06MV
0633	160103		CMRT	C current & salinity	NOAA					VANC06MV
0125	050103		CMRT	B SOLO FLOAT #179	NOAA					VANC06MV
0633	160103		CMRT	C current & salinity	NOAA					VANC06MV
0812	070103		CMAB	B CMM #3	SIX					VANC06MV
0633	160103		CMAB	C CMM #3	SIX					VANC06MV
0418	080103		CMRT	B SOLO FLOAT #192	NOAA					VANC06MV
0633	160103		CMRT	C current & salinity	NOAA					VANC06MV
1632	100103		CMAB	B Validation mooring	SIX					VANC06MV
0633	160103		CMAB	C Validation mooring	SIX					VANC06MV
0516	120103		CMAB	B CMM2 ANCHOR	SIX					VANC06MV
0633	160103		CMAB	C CMM2 ANCHOR	SIX					VANC06MV
0704	130103		CMAB	B CMM1	SIX					VANC06MV
0633	160103		CMAB	C CMM1	SIX					VANC06MV

**** Conductivity, Temperature, Depth ****
 **** Samples to U. of Maine ****

0823	030103		TDCT	B CTD #1A		24btls	SIX			VANC06MV
1141	030103		TDCT	E TSO	G	4597M	SIX			VANC06MV
2127	040103		TDCT	B CTD #2		24btls	SIX			VANC06MV
0106	050103		TDCT	E TSO	G	4734M	SIX			VANC06MV
0455	050103		TDCT	B CTD #3		24btls	SIX			VANC06MV
0833	050103		TDCT	E TSO	G	4685M	SIX			VANC06MV
2047	050103		TDCT	B CTD #4		24btls	SIX			VANC06MV
0043	060103		TDCT	E TSO	G	5161M	SIX			VANC06MV
0608	060103		TDCT	B CTD #5		24btls	SIX			VANC06MV
1001	060103		TDCT	E TSO	G	5163M	SIX			VANC06MV
1518	060103		TDCT	B CTD #6		24btls	SIX			VANC06MV
1911	060103		TDCT	E TSO	G	4940M	SIX			VANC06MV
0025	070103		TDCT	B CTD #7		24btls	SIX			VANC06MV
0419	070103		TDCT	E TSO	G	5097M	SIX			VANC06MV
1415	070103		TDCT	B CTD #8		24btls	SIX			VANC06MV
1816	070103		TDCT	E TSO	G	5125M	SIX			VANC06MV
0021	080103		TDCT	B CTD #9		24btls	SIX			VANC06MV
0412	080103		TDCT	E TSO	G	4955M	SIX			VANC06MV
1007	080103		TDCT	B CTD #10		24btls	SIX			VANC06MV
1359	080103		TDCT	E TSO	G	4868M	SIX			VANC06MV
1932	080103		TDCT	B CTD #11		24btls	SIX			VANC06MV
2116	080103		TDCT	E TSO	G	2000M	SIX			VANC06MV
2339	080103		TDCT	B CTD #12		24btls	SIX			VANC06MV
0128	090103		TDCT	E TSO	G	2000M	SIX			VANC06MV
0345	090103		TDCT	B CTD #13		24btls	SIX			VANC06MV

0546 090103 TDCT E TSO G 2020M SIX

VANC06MV

#GMT #TIME #-----	DDMMYY DATE -----	SAMP CODE ---	B E	SAMPLE IDENTIFIER	DISP CODE	LATITUDE	LONGITUDE	p c	CRUISE LEG-SHIP
1609	090103	TDCT	B	CTD #14	24btls	SIX			VANC06MV
1935	090103	TDCT	E	TSO G	4624M	SIX			VANC06MV
0130	100103	TDCT	B	CTD #15	24btls	SIX			VANC06MV
0306	100103	TDCT	E	TSO G	4688M	SIX			VANC06MV
2130	100103	TDCT	B	CTD #16	24btls	SIX			VANC06MV
0128	110103	TDCT	E	TSO G	4637M	SIX			VANC06MV
0542	110103	TDCT	B	CTD #17		SIX			VANC06MV
0715	110103	TDCT	E	TSO G	4690M	SIX			VANC06MV
2230	110103	TDCT	B	CTD # 18	24btls	SIX			VANC06MV
0204	120103	TDCT	E	TSO G	4380M	SIX			VANC06MV
1426	120103	TDCT	B	CTD #19	24btls	SIX			VANC06MV
1556	120103	TDCT	E	TSO G	4421M	SIX			VANC06MV
2214	120103	TDCT	B	CTD #20		SIX			VANC06MV
0130	130103	TDCT	E	CTD #20	3900M	SIX			VANC06MV
1245	130103	TDCT	B	CTD #21	24btls	SIX			VANC06MV
1405	130103	TDCT	E	TSO G	1056M	SIX			VANC06MV
1554	130103	TDCT	B	CTD R # 11	24btls	SIX			VANC06MV
1647	130103	TDCT	E	TSO G	840M	SIX			VANC06MV
1804	130103	TDCT	B	CTD R # 10	24btls	SIX			VANC06MV
1844	130103	TDCT	E	TSO G	552M	SIX			VANC06MV
2003	130103	TDCT	B	CTD R # 9	24btls	SIX			VANC06MV
2036	130103	TDCT	E	TSO G	452M	SIX			VANC06MV
2153	130103	TDCT	B	CTD R # 8	24btls	SIX			VANC06MV
2233	130103	TDCT	E	TSO G	420M	SIX			VANC06MV
2345	130103	TDCT	B	CTD R # 7	24btls	SIX			VANC06MV
1624	140103	TDCT	E	TSO G	294M	SIX			VANC06MV
1825	140103	TDCT	B	CTD S # 9	24btls	SIX			VANC06MV
1854	140103	TDCT	E	TSO G	377M	SIX			VANC06MV
2117	140103	TDCT	B	CTD S # 11	24btls	SIX			VANC06MV
2203	140103	TDCT	E	TSO G	377M	SIX			VANC06MV
2345	140103	TDCT	B	CTD #37	24btls	SIX			VANC06MV
0037	150103	TDCT	E	TSO G	1045M	SIX			VANC06MV
0228	150103	TDCT	B	CTD # S 13	24btls	SIX			VANC06MV
0344	150103	TDCT	E	TSO G	1790M	SIX			VANC06MV
0653	150103	TDCT	B	CTD #38	24btls	SIX			VANC06MV
0844	150103	TDCT	E	TSO G					VANC06MV

#GMT	DDMMYY	SAMP	B	SAMPLE	DISP				p	CRUISE
#TIME	DATE	TZ	CODE	E IDENTIFIER	CODE	LATITUDE	LONGITUDE		c	LEG-SHIP
#-----	---	---	---	-----	---	-----	-----	---	---	-----
**** Anchored Buoys **** **** Samples to U. of Maine ****										
1840	050103		BUAB	B PIES 052 inverted	SIX					VANC06MV
0633	160103		BUAB	C echo sounder	SIX					VANC06MV
0420	060103		BUAB	B PIES #064 inverted	SIX					VANC06MV
0633	160103		BUAB	C echo sounder	SIX					VANC06MV
1315	060103		BUAB	B PIES #054 inverted	SIX					VANC06MV
0633	160103		BUAB	C echo sounder	SIX					VANC06MV
2231	060103		BUAB	B PIES #061 inverted	SIX					VANC06MV
0633	160103		BUAB	C echo sounder	SIX					VANC06MV
1212	070103		BUAB	B PIES #066 inverted	SIX					VANC06MV
0633	160103		BUAB	C echo sounder	SIX					VANC06MV
2227	070103		BUAB	B PIES #060 inverted	SIX					VANC06MV
0633	160103		BUAB	C echo sounder	SIX					VANC06MV
0826	080103		BUAB	B PIES #051 inverted	SIX					VANC06MV
0633	160103		BUAB	C echo sounder	SIX					VANC06MV
1422	090103		BUAB	B PIES #055 inverted	SIX					VANC06MV
0633	160103		BUAB	C echo sounder	SIX					VANC06MV
2347	090103		BUAB	B PIES #050 inverted	SIX					VANC06MV
0633	160103		BUAB	C echo sounder	SIX					VANC06MV
2030	110103		BUAB	B PIES #059 inverted	SIX					VANC06MV
0633	160103		BUAB	C echo sounder	SIX					VANC06MV
0835	120103		BUAB	B PIES #049 inverted	SIX					VANC06MV
0633	160103		BUAB	C echo sounder	SIX					VANC06MV
1202	130103		BUAB	B PIES #042 inverted	SIX					VANC06MV
0633	160103		BUAB	C echo sounder	SIX					VANC06MV
#				End Sample Index						VANC06MV