

Daily Excursions

FROM SAN DIEGO
VIA

Cuyamaca Ry.

DAILY OPPORTUNITY TO GO
To the Mountains



EL CAJON VALLEY

or visit the highly improved Fruit Ranches of the hillsides

and Valleys

Tourists and Home-Seekers usually make headquarters

At Lakeside

There is a First-Class Hotel there, also Cheap Livery.

GOOD HUNTING, BEAUTIFUL DRIVES,
QUIET REST

OTHER MOUNTAIN RESORTS ARE

ALPINE, DESCANSO, CUYAMACA,
RAMONA, WITCH CREEK, SANTA YSABEL,
JULIAN, MESA GRANDE,
WARNER RANCH HOT SPRINGS

Each of these points have good hotels and many attractions.

Ask for Illustrated *S.S.S.*

S.S.S. **Descriptive Pamphlet**

At Station, Foot of Tenth St., or at Hotels and }
Ferris & Ferris' Drug Store, Fifth and H St. } San Diego

ROUND TRIP RATES

GOOD ONLY ON DAY OF SALE

To Lemon Grove or La Mesa	50 Cts.
To Alta or El Cajon	75 Cts.
To Santee or Lakeside	\$1.00
To Moreno or Foster	\$1.15

Tickets on Sale at CUYAMACA DEPOT, Foot of Tenth St., and at FERRIS & FERRIS' Drug Store, Fifth and H Sts. Logan Avenue Street Cars leaving Fifth and D Streets at 8:50 a. m. and 4:10 p. m. make close connection at Sixteenth and N Streets with outgoing morning and afternoon trains.

TRAINS LEAVE DEPOT, Foot of Tenth Street, Daily at 9:02 A. M. and 4:22 P. M., and Sixteenth Street Crossing at 9:03 A. M. and 4:23 P. M. Return at 3:30 P. M. Week Days, and 5:05 P. M. Sundays.

SEE FOLDERS AT ALL SAN DIEGO HOTELS

Frye, Garrett & Smith, Printers

(OVER)

375-
RK08F
B [1908?]

VIA THE...

CUYAMACA RY.



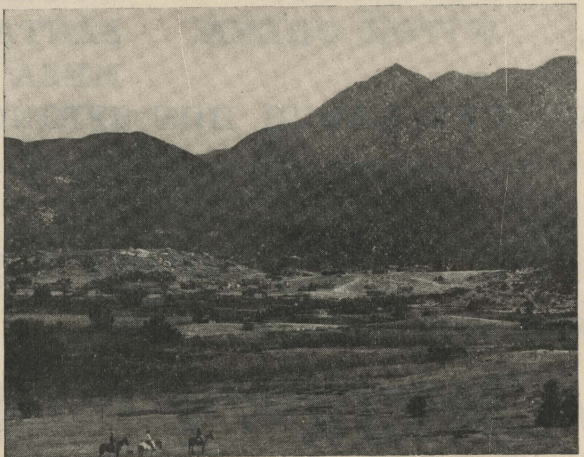
A MOUNTAIN DRIVE



LAKESIDE



HUNTING GROUNDS



WARNER RANCH HOT SPRINGS



A SUBURBAN HOME

Over