

INFORMAL REPORT AND INDEX OF  
NAVIGATION, DEPTH AND MAGNETIC DATA

(Issued April 4, 1978)

INDOMED EXPEDITION

LEG 3

Cadiz, Spain (4 December 1977)  
to  
Alexandria, Egypt (12 December 1977)

R/V Melville

Chief Scientist - R. Williams (SIO)

Resident Marine Tech - W. Keith

Post-Cruise Processing and Report Preparation  
by S.I.O. Geological Data Center

Data Collection Funded by NSF  
Grant Number OCE76-03936  
Data Processing Funded by SIA, NSF and ONR

NOTE: This is an index of underway geophysical data edited and processed shortly after the completion of the cruise leg and is intended primarily for informal use within the institution. This document is not to be reproduced or distributed outside Scripps without prior approval of the Geological Data Center, Scripps Institution of Oceanography, La Jolla, California 92093.

GDC Cruise ID# 169

## Informal Report and Index of Navigation, Depth, Magnetic and Subbottom Profiler Data\*

### Contents:

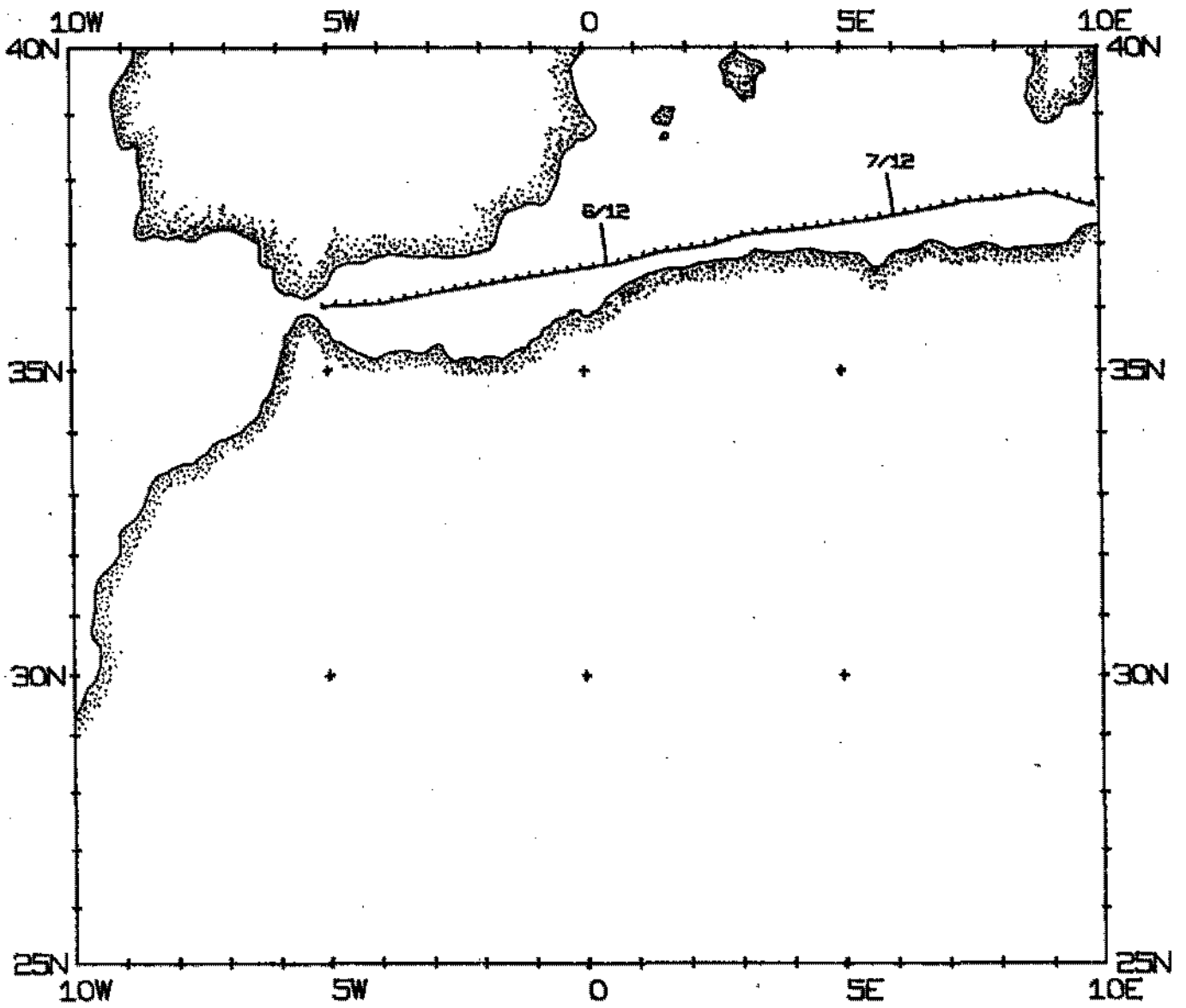
- Index Chart - gives track of cruise leg and boundaries of depth compilation plots (see below).
- Track Charts - annotated with dates (day/month) and hour ticks. The scale is .3"/deg. long.
- Profiles - Depth and magnetic anomaly vs. distance. Dates (day/month) and positions of major course changes (greater than 30 degrees) are annotated. Sections of track having subbottom profiler (airgun) records have a solid black line along the bottom of the profile.

For information on the availability and reproduction costs of data in the following forms, contact S. M. Smith, Curator, Geological Data Center, Scripps Institution of Oceanography, La Jolla, California 92093. Phone: (714) 452-2752.

1. Navigation listing of times and positions of course and speed changes, fixes and drift velocity.
2. Depth compilation plots - in fathoms (assumed sound velocity of 800 fm./sec.) at approximately 1 mile spacing, plotted at 4"/degree with standard U. S. Navy Oceanographic Office BC series boundaries (see index chart).
3. Plots of magnetic anomaly profiles along track - map scale = 1.2"/degree; anomaly scale between 15°N and 15°S latitude = 500 gamm/inch; anomaly scale north of 15°N and south of 15°S = 1000 gamm/inch; from values retrieved at approximately 1 mile spacing and regional field removed using the 1975 IGRF.
4. Card decks of navigation, depth and magnetics (for specific formats, contact S. M. Smith, Geological Data Center).
5. S. I. O. Sample Index - list of beginning and end times and positions of all underway records as well as all other samples (geology, biology, physical oceanography, etc.) collected on the cruise leg.
6. Microfilm or Xerox copies of:
  - a. Echosounder records - 12 and 3.5 kHz frequency
  - b. Subbottom profiler records (airgun)
  - c. Magnetometer records
  - d. Underway Data Log

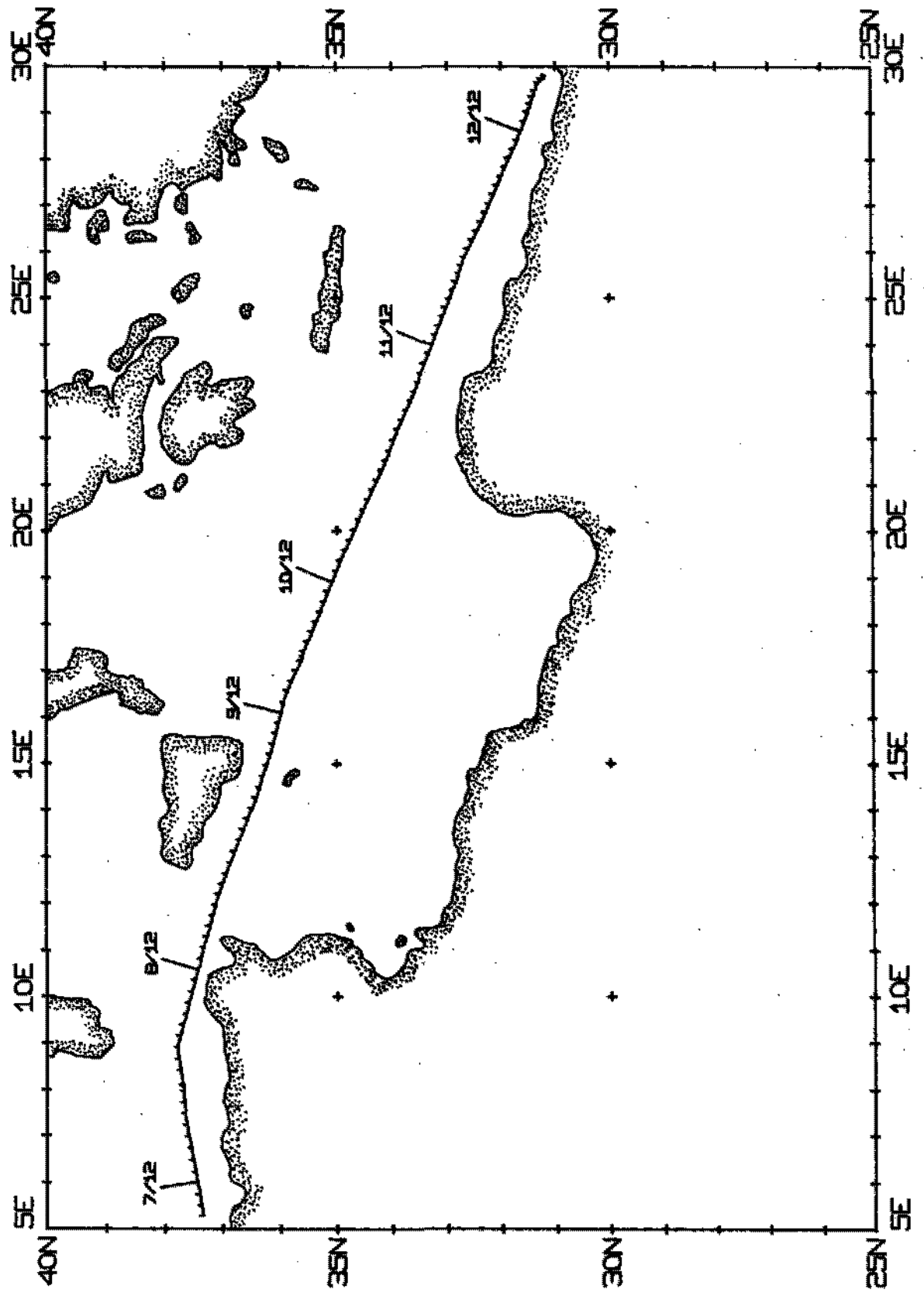
INM003MV TRACK PLOT (1 OF 2)

MERCATOR PROJECTION, SCALE= 0.312 IN/DEG LONGITUDE



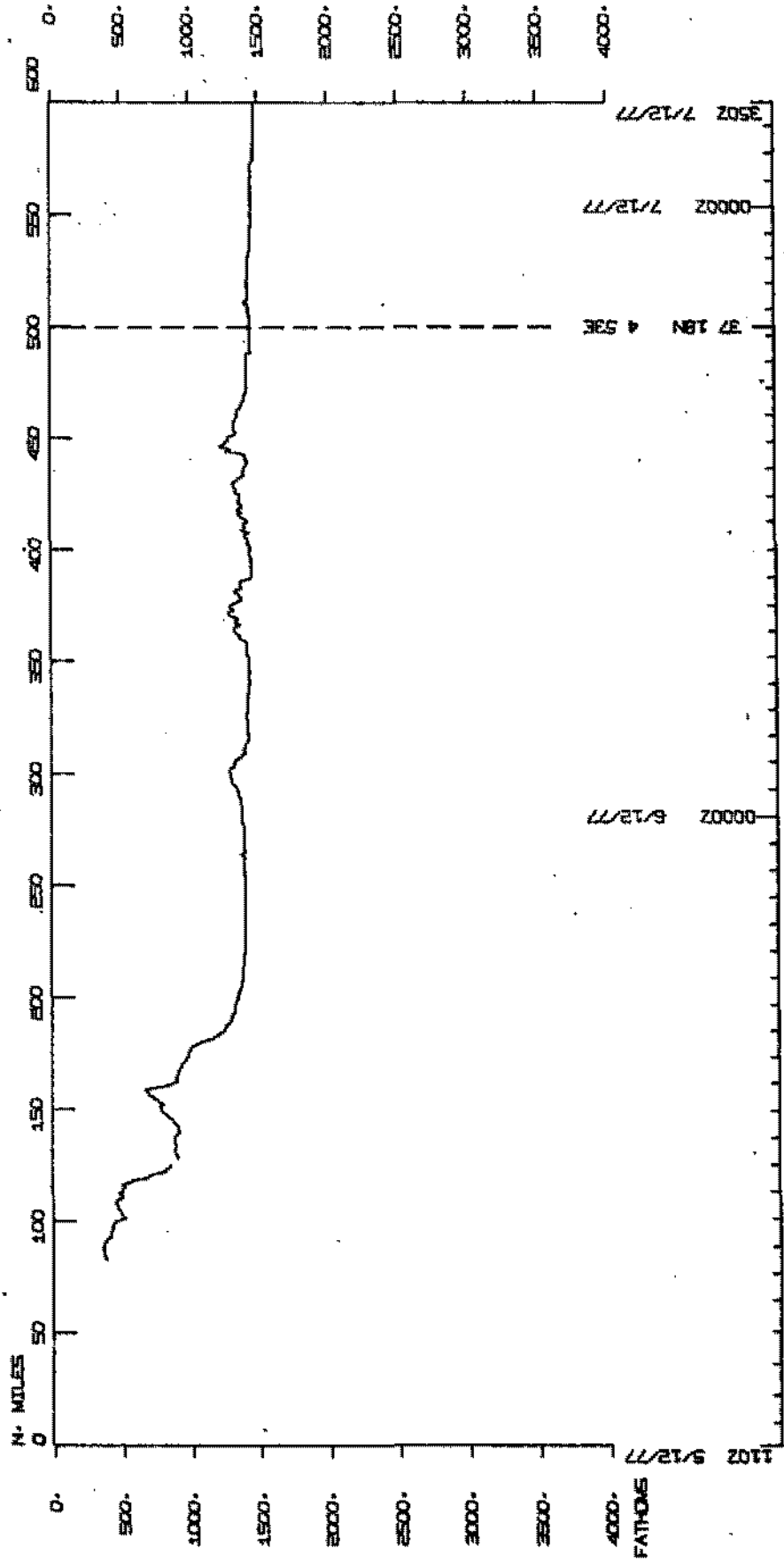
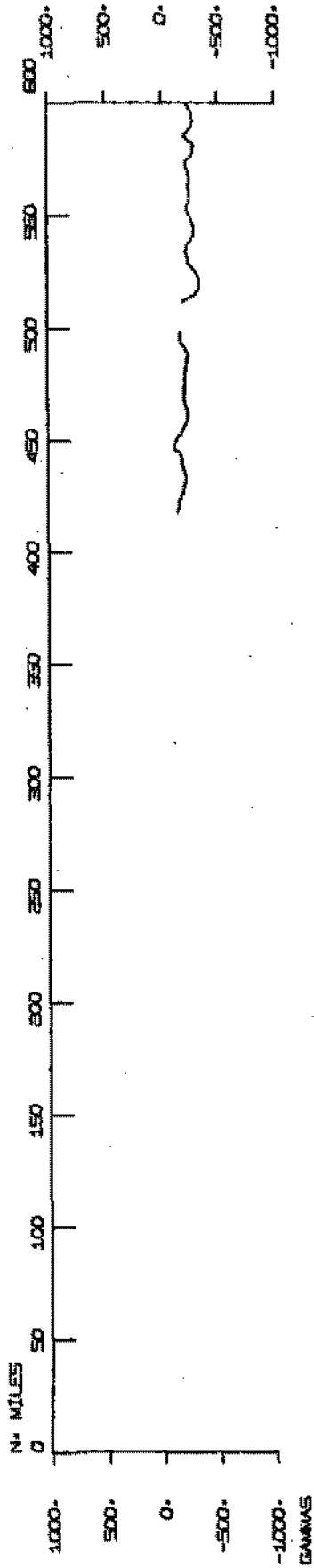
INMDC3M TRACK PLOT (2 OF 2)

MERCATOR PROJECTION; SCALE= 0.312 IN/DEG LONGITUDE

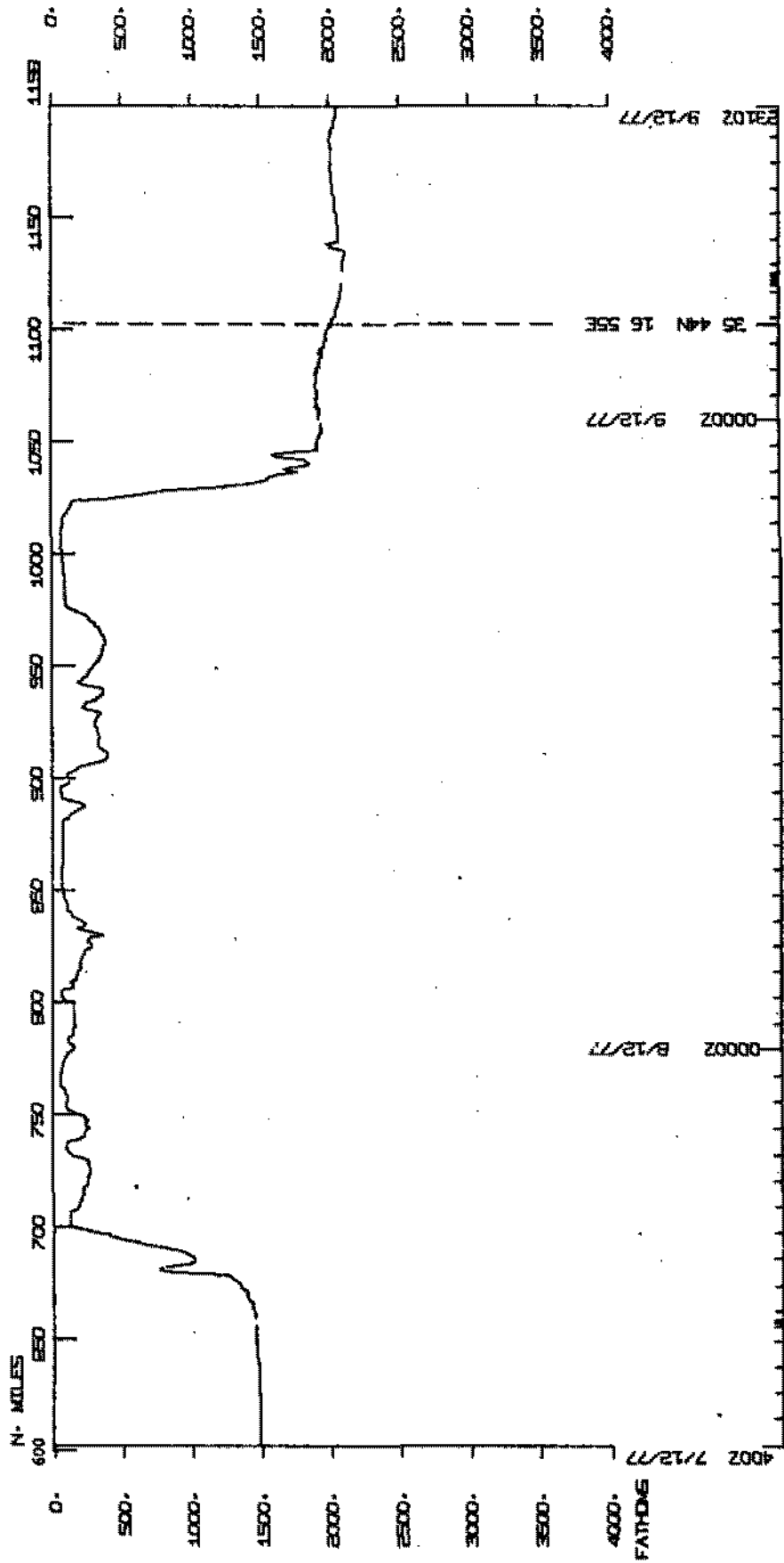
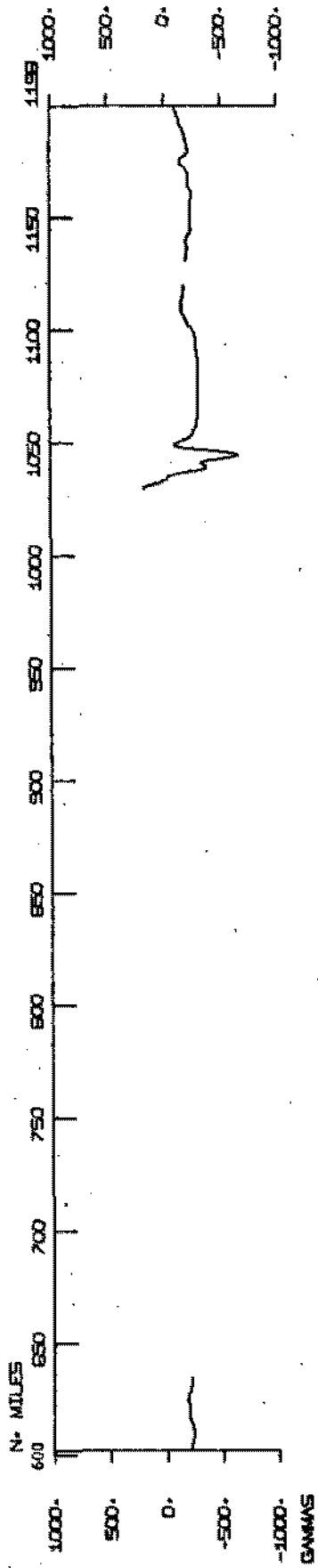




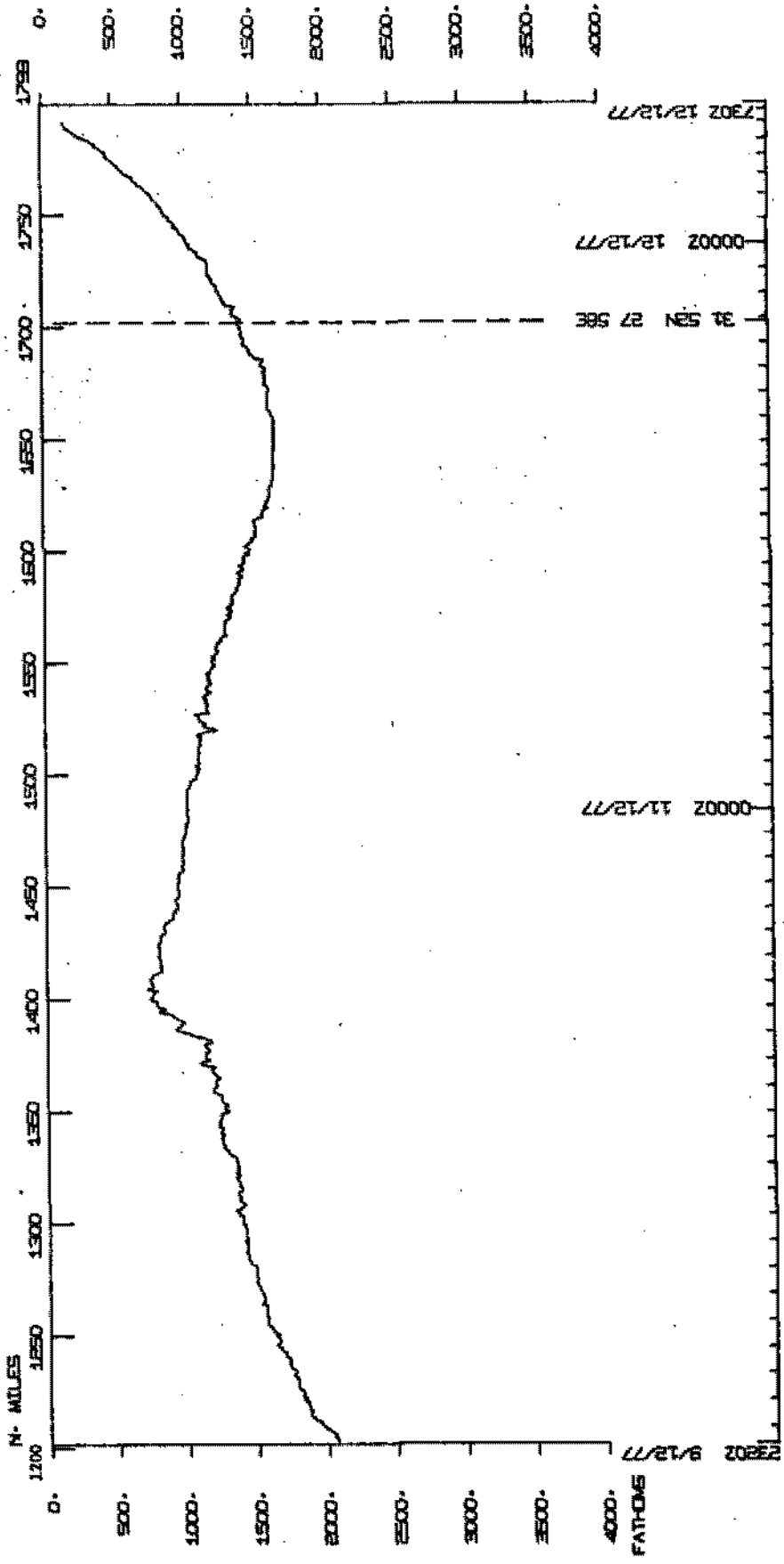
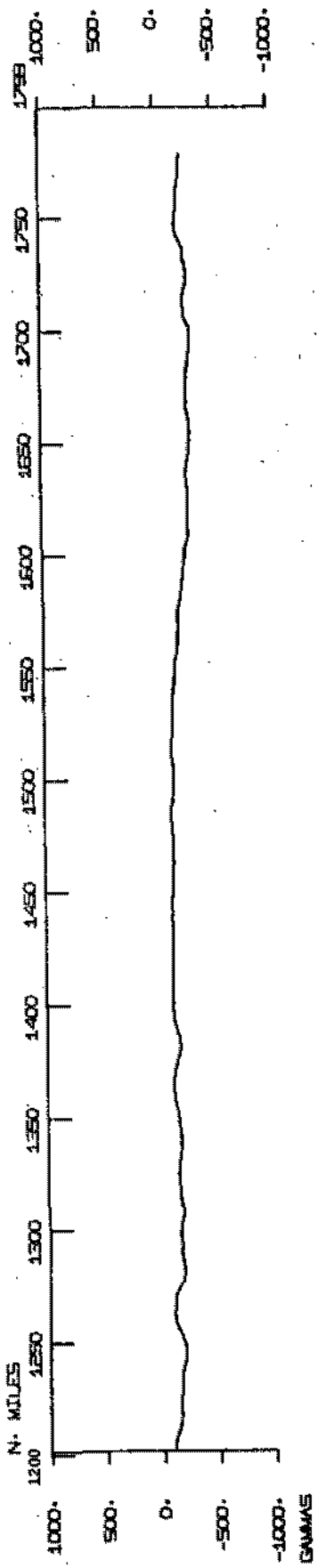
INMDO3MV



# INMDSMV



# INMOUNTAIN





S.I.O. SAMPLE INDEX

(Issued April 4, 1978)

INDOMED EXPEDITION

LEG 3

Cadiz, Spain (4 December 1977)  
to  
Alexandria, Egypt (12 December 1977)

R/V Melville

Chief Scientist - R. Williams (SIO)

Resident Marine Tech - W. Keith

Post-Cruise Processing and Report Preparation  
by S.I.O. Geological Data Center.

Index Encoding Funded by NSF  
Grant Number OCE76-80618  
Index Processing and Report Preparation  
Funded in part by SIA

The Sample Index is a first level interdisciplinary listing of time, position, sample identification and disposition of all samples, records and measurements collected on this cruise leg. The index data are encoded at sea by the Resident Technician and processed on shore by the S.I.O. Geological Data Center shortly after the completion of the cruise leg.

Positions are interpolated on the basis of sample time by comparison to a single, edited navigation file. Samples beginning at one time and position and ending at another are entered on two consecutive cards. Disposition and sample type are represented by three and four character codes to permit future computer searches on these parameters. (Listings defining these codes are available from the Geological Data Center.)

NOTE: This document is intended primarily for informal use within the institution and is not to be reproduced or distributed outside Scripps without prior approval of the Geological Data Center, Scripps Institution of Oceanography, La Jolla, California 92093.

NUMBER OF SAMPLES OF CLASS 'TYPE' GOING TO DESTINATION 'DISP'

DISP	TYPE					TOTAL
	DP	GC	LB	MG	PE	
GDC	1	4	1	1	1	6
GUG	1		3		1	3
LDD	1				4	4
SIO	1				12	12
SIX	1				1	1
TOTAL	1	4	3	1	17	26

SAMPLE 'TYPE' CODES USED ABOVE

DP = DEPTH  
 GC = GEOCHEMICAL SAMPLING  
 LB = LOG BOOKS  
 MG = MAGNETICS (TOWED VEHICLE, SURFACE, TOTAL FIELD)  
 PE = PERSONNEL IN SCIENTIFIC PARTY

SAMPLE 'DISP' CODES USED ABOVE

GDC = GEOLOGICAL DATA CENTER -- S. SMITH (EXT. 2752)  
 GUG = GEOCHEMICAL OCEAN SECTIONS PROJECT - (ext. 4420)  
 LDD = LAMONT-DOHERTY GEOPHYSICAL OBSERVATORY, COLUMBIA UNIVERSITY  
 SIO = SCRIPPS INSTITUTION OF OCEANOGRAPHY, LA JOLLA, CAL. 92093  
 SIX = SCRIPPS INSTITUTION NON-EMPLOYEE -(CONTACT DORCAS UTTER EXT. 2356)



## INDOMED LEG 3 SAMPLE INDFX

INMDO3MV

## \*\*\* PORTS \*\*\*

1200 41277	LGPT B CADIZ, SPAIN	36 32 N	6 18 W F	INMDO3MV
500 121277	LGPT E ALEXANDRIA, EGYPT	31 11 N	29 54 E F	INMDO3MV

## \*\*\*PERSONNEL\*\*\*

PECS	WILLIAMS, R	SIO	INMDO3MV
PERT	KEITH, W	SIO	INMDO3MV
PECT	ELSTON, M	SIO	INMDO3MV
PE	BISCAYE, P	LDD	INMDO3MV
PE	CUNNINGHAM, L	SIX	INMDO3MV
PE	DIGRE, T	SIO	INMDO3MV
PE	HESTER, A	SIO	INMDO3MV
PE	JAEGER, E	SIO	INMDO3MV
PE	KAITERTS, P	LDD	INMDO3MV
PE	MORRIONE, M	SIO	INMDO3MV
PE	RICHTER, W	SIO	INMDO3MV
PE	SAIGH, D	LDD	INMDO3MV
PE	SCHECHTMAN, N	LDD	INMDO3MV
PE	SLATER, E	SIO	INMDO3MV
PE	VAN WOY, F	SIO	INMDO3MV
PE	WELLS, J	SIO	INMDO3MV
PE	WITHEROW, S	SIO	INMDO3MV

\*\*\* NOTE \*\*\* TIME ZONES AND MINUTES OF LATITUDE AND LONGITUDE ARE LISTED IN TENTHS (E.G. 10.6 IS LISTED AS 106)

\*\*\* NOTE \*\*\* AN 'X' IN THE (B)EGIN/(F)IND COLUMN FOLLOWING THE SAMPLE CODE INDICATES NO SAMPLE OR DATA RECOVERED

TIME GMT	DATE D.M.Y.	TIME LOC	TZ LOC	SAMP CODE	SAMPLE IDENT.	DISP CODE	LAT.	LONG.	CRUISE LEG-SHIP
-------------	----------------	-------------	-----------	--------------	---------------	--------------	------	-------	--------------------

\*\*\* LOG BOOKS \*\*\*

320	51277			LBWU B	UNDERWAY WATCH LOG	GDC 36	19N	4 445W	S INMD03MV
2355	51277			LBWU F	UNDERWAY WATCH LOG	GDC 36	403N	0 248E	S INMD03MV

\*\*\* FATHOGRAMS \*\*\*

320	51277			DPRT B	GDR 12KHZ R-01	GDC 36	19N	4 445W	S INMD03MV
850	51277			DPRT E	GDR 12KHZ R-01	GDC 36	102N	3 164W	S INMD03MV
730	51277			DPR3 B	ED0 3.5KHZ R-01	GDC 36	70N	3 361W	S INMD03MV
1504	71277			DPR3 E	ED0 3.5KHZ R-01	GDC 37	440N	8 262E	S INMD03MV
1524	71277			DPR3 B	ED0 3.5KHZ R-02	GDC 37	446N	8 311E	S INMD03MV
1130	101277			DPK3 E	ED0 3.5KHZ R-02	GDC 34	93N	21 237E	S INMD03MV
1136	101277			DPK3 B	ED0 3.5KHZ R-03	GDC 34	88N	21 250E	S INMD03MV
612	121277			DPR3 E	ED0 3.5KHZ R-03	GDC 31	195N	29 363E	S INMD03MV

\*\*\* MAGNETUMETER \*\*\*

1234	61277			MGR B	MAGNETICS R-01	GDC 37	87N	3 111E	S INMD03MV
429	121277			MGR E	MAGNETICS R-01	GDC 31	241N	29 230E	S INMD03MV

\*\*\*GEOCHEMICAL SAMPLE\*\*\*

1155	61277			GCXX	STATION 402 WINCH	GOG 37	79N	3 53E	S INMD03MV
1238	71277			GCTD	STATION 403	GOG 37	416N	8 57E	S INMD03MV
737	91277			GCLV B	STATION 404	GOG 35	360N	17 151E	S INMD03MV
1700	91277			GCLV E	STATION 404	GOG 35	350N	17 244E	S INMD03MV
9900					END SAMPLE INDEX				INMD03MV