

2011 ENTREPRENEUR

# HALL OF FAME


Honoring  
**Gene Ray**  
March 31, 2011  
Estancia La Jolla



 CONNECT<sup>®</sup>

LEAD SPONSOR

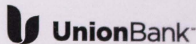
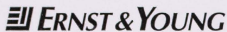


A  Sempra Energy utility<sup>SM</sup>

VIDEO SPONSOR



SUPPORT SPONSORS



CONTRIBUTING SPONSORS



WALTER J. AND BETTY C. ZABLE  
FOUNDATION



YOUNG INNOVATORS HOST

MR. & MRS. STUART J. RABIN  
& NINE THIRTY CAPITAL  
FOUNDATION

About CONNECT

CONNECT is a nonprofit organization dedicated to creating and sustaining the growth of innovative technology and life sciences businesses in San Diego. Since 1985, CONNECT has assisted in the formation and development of over 2,000 companies and is widely regarded as the world's most successful regional program linking inventors and entrepreneurs with the resources they need for success. CONNECT focuses on research institution support, business creation and development, entrepreneurial learning, access to capital, public policy advocacy, awards, recognition and networking. More than 40 countries and regions have adopted the CONNECT model, including New York City, U.K., Sweden, Norway, Denmark, Australia and India. For more information, please visit [www.connect.org](http://www.connect.org).

- 11:00am**                      **REGISTRATION AND NETWORKING**
- 11:30am**                      **BALLROOM OPENS**  
Luncheon Seating Begins  
Lunch is Served
- 12:30pm**                      **LUNCHEON PROGRAM BEGINS**  
**Welcome** : Duane Roth, CEO, CONNECT  
**Opening Remarks** : Frank Urtasun, Director of  
Community Relations, SDG&E
- 12:40pm**                      **INTRODUCTION OF HONOREE**  
Malin Burnham, Chairman, The Burnham Foundation
- LIVE INTERVIEW**  
Gene Ray, Managing Director, GMT Ventures  
Jane Mitchell, Producer and Anchor, Channel 4  
San Diego's *One on One with Jane Mitchell*
- 1:30pm**                      **PROGRAM CONCLUDES**

SELECTION  
COMMITTEE

**SPECIAL THANKS TO THE  
HALL OF FAME SELECTION COMMITTEE MEMBERS**

**COMMITTEE CHAIR**

Brent Jacobs : Cushman & Wakefield Inc.

**COMMITTEE MEMBERS**

Knox Bell : DLA Piper

Malin Burnham : The Burnham Foundation

Edward Dennis : UC San Diego

Sandy Ehrlich : SDSU Entrepreneurial Management Center

Stan Fleming : Forward Ventures

Jessie Knight, Jr. : San Diego Gas & Electric

Cub Parker : CONNECT Association


Duane Roth : CONNECT



THE energy OF  
*achievement*

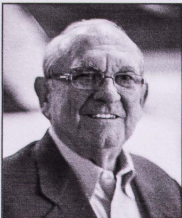
SDG&E® salutes *Gene Ray*, the latest inductee into CONNECT's Entrepreneur Hall of Fame. We admire his lifelong dedication to improving technology in government sectors nationwide. And we're proud to support an organization that has made significant achievements in the areas of science, research and technology in the San Diego region.



A  Sempra Energy utility®

Here for you, every day.™

[sdge.com](http://sdge.com)



## GENE RAY

---

Dr. Gene Ray is founder and former CEO and member of the board of The Titan Corporation, a technology-based company and leading provider of comprehensive information and communications products, solutions and services for the Department of Defense, Department of Homeland Security and other government Agencies. Titan also created, built and launched several commercial technology-based companies including an IT business, a global telecommunications services business providing wireless services to underdeveloped countries and a business that pasteurized food using electron beams. When Titan was sold in 2005, it had more than 15,000 employees and annualized sales of approximately \$2.5 billion.

Prior to launching Titan, Gene was hired as the 32nd employee of SAIC and served as executive vice president, general manager and a member of the board of directors for 11 years. Previously, Gene served as senior appointee, chief strategic division, operations analyses reporting to the U.S. Air Force Chief of Staff, where he led a team of military and civilian analysts. Earlier in his career, he was with Aerospace Corporation where he contributed to weapon system analysis programs and specialized in the area of nuclear survivability.

Presently, Gene is the Chairman of the Board of Decision Sciences Corporation; a developer of a Multi-Mode Passive Detection System (MMPDS) which detects nuclear materials and nuclear weapons being illicitly transported across international borders. He also serves as Chairman of the Board of the Heart, Lung & Vascular Advisory Board at Scripps Clinic and is a member of the board of Scripps Clinic/Green Hospital, Murray State University Foundation, Tactronics Corporation and several other early stage technology companies.

Gene received his Ph.D. in theoretical physics at the University of Tennessee; an M.S. in physics at the University of Tennessee; and a B.S. in mathematics, physics and chemistry at Murray State University.







## Ready to celebrate?

There's no better reason than a milestone achievement.  
At Ernst & Young, we couldn't be happier for  
CONNECT honoring Gene Ray.  
We hope you'll join us in congratulating Gene.  
Bravo!

[ey.com](http://ey.com)

©2011 Ernst & Young LLP  
Ernst & Young refers to the global organization of member firms of  
Ernst & Young Global Limited, a Swiss entity. Ernst & Young LLP  
Ernst & Young LLP is a client-serving member firm located in the US.

**ERNST & YOUNG**  
*Quality In Everything We Do*




## JANE MITCHELL

Channel 4 San Diego

Jane Mitchell produces and anchors *One on One with Jane Mitchell*, giving viewers an in-depth look at San Diego's top sports figures. Now in its 15th season on Channel 4 San Diego, the signature show has featured more than 100 guests, including Ted Williams and Tony Gwynn. Jane has earned 26 Emmys and numerous other local, regional and national awards for her work. Jane is also a feature reporter for the Padres pre and postgame shows and co-hosts the in-depth interview show *Forefront* and the annual Holiday Bowl Parade. She also added published author to her list of accomplishments when her book "One on One: My Journey with Hall of Famers, Fan Favorites and Rising Stars" hit the stands in November of 2010. She has degrees from UC San Diego and Northwestern University and has worked in television news in Texas, Oklahoma and San Diego. In 1996 Jane was hired by COX to help create Channel 4 San Diego and entered the world of sports. She is board chairman of the ALS Association, Greater San Diego Chapter, in honor of her father who died of Lou Gehrig's Disease. Her passion for journalism and storytelling stems from her growing up in a Navy family, traveling the world and being encouraged by her mother, a teacher, to write about her experiences.

JANE HAS EARNED  
26 EMMYS AND NUMEROUS  
OTHER LOCAL, REGIONAL  
AND NATIONAL AWARDS  
FOR HER WORK.



The top half of the page features a stylized, monochromatic representation of the American flag, with white stars on a dark background and wavy horizontal stripes below.

# **Congratulations to a great American**

*Honoring Gene Ray*





**Cushman & Wakefield**

Cushman & Wakefield operates nearly 100 owned and alliance offices in the United States with access to more than 15,000 employees globally. With a history of commercial real estate leadership that spans 90 years, Cushman & Wakefield's brokerage and services professionals are the most trusted in the industry, typically involved in the largest, most complex assignments from New York to San Diego and in major business centers everywhere in between. Whatever the requirements, Cushman & Wakefield's professionals offer expertise in all aspects of commercial real estate—from buying, selling, financing, leasing, managing and valuing properties; to providing strategic planning, research, portfolio analysis, site selection and space location assistance, among many other consulting services. For more information, visit [www.cushwake.com](http://www.cushwake.com).

**The Foundation for Enterprise Development (FED)**

The Foundation for Enterprise Development (FED) was established in 1986 by Dr. J. Robert Beyster to promote the concept of broad-based, participative employee ownership and entrepreneurship. The FED funds inter-disciplinary research and curriculum development at business, engineering, and liberal arts schools. The FED also creates and engages in research and training programs that inspire innovation and entrepreneurship for solving problems of national and global importance. The FED supports the Beyster Institute, which was named in 2002, as part of the FED, and in 2004 became part of the Rady School of Management at UCSD. The Institute is a leader in education and consulting on employee ownership and the creation of effective ownership cultures. For more information, visit [www.fed.org](http://www.fed.org).

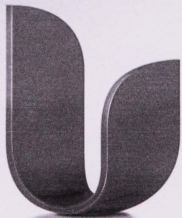
**Walter J. & Betty C. Zable Foundation**

This Foundation, named for Cubic Corporation's founder Walter Zable and his wife, Betty, has been instrumental in funding and supporting a number of philanthropic efforts in and around the San Diego region. Founded in San Diego in 1951, Cubic Corporation's two major segments, Cubic Defense Applications and Cubic Transportation Systems, provide a wide spectrum of products and services to both the military and civilian markets.

**About the Entrepreneur Hall of Fame**

The CONNECT Entrepreneur Hall of Fame recognizes individuals who have achieved distinction over the years for founding, leading or advancing a San Diego life sciences or technology based business or organization. Such entrepreneurs have contributed to our region individually and, through their organizations, to the business sectors that shape our local economy and improve our quality of life. The Entrepreneur Hall of Fame celebrates these individual success stories that continue to inspire future generations of innovators and entrepreneurs. Members include Irwin Jacobs, Walter Zable, Ivor Royston, William Rastetter, J. Robert Beyster, Neal Blue, Linden Blue, Peter Preuss and now, Gene Ray.






## You are a leader.

You dare to lead when others follow. You make a true difference in the lives of those you touch. You light the way by your shining example. For your steady guidance, we salute you.

Union Bank is a proud sponsor of the CONNECT Entrepreneur Hall of Fame Awards honoring Gene Ray for his tireless dedication to our community.

San Diego Corporate Banking – 530 B Street, 4th Floor, San Diego, CA 92101  
Bruce Breslau, SVP & Market Manager, 619-230-3758

[unionbank.com](http://unionbank.com)

 **UnionBank**<sup>®</sup>  
Invest in you<sup>®</sup>

Member  
**FDIC** ©2011 Union Bank, N.A.

Without these guys,  
this would be high tech.



\* formerly the  
San Diego Information Technology  
Executive of the Year Awards.

MAY  
11

THE PADDOCK  
AT THE DEL MAR  
RACETRACK

WE'VE COME A LONG WAY, BABY! It's time to celebrate San Diego's Top Tech Execs – you know, the executives who keep today's technology working at your company and are envisioning the technology you'll take for granted tomorrow. So come – say thanks and meet the future!


For more info go to: [www.sandiegomagazine.com/toptech](http://www.sandiegomagazine.com/toptech)

**SAN DIEGO**  
MAGAZINE

presented by  
**COX**  
Business\*



**TOP TECH EXEC  
AWARDS  
2011**

sponsored by  
Alcatel-Lucent 

**SDSIG**  
SANDIEGO INFORMATION TECHNOLOGY ASSOCIATION



8950 Villa La Jolla Drive  
Suite A124  
La Jolla, CA 92037  
858.964.1300

CONNECT.ORG