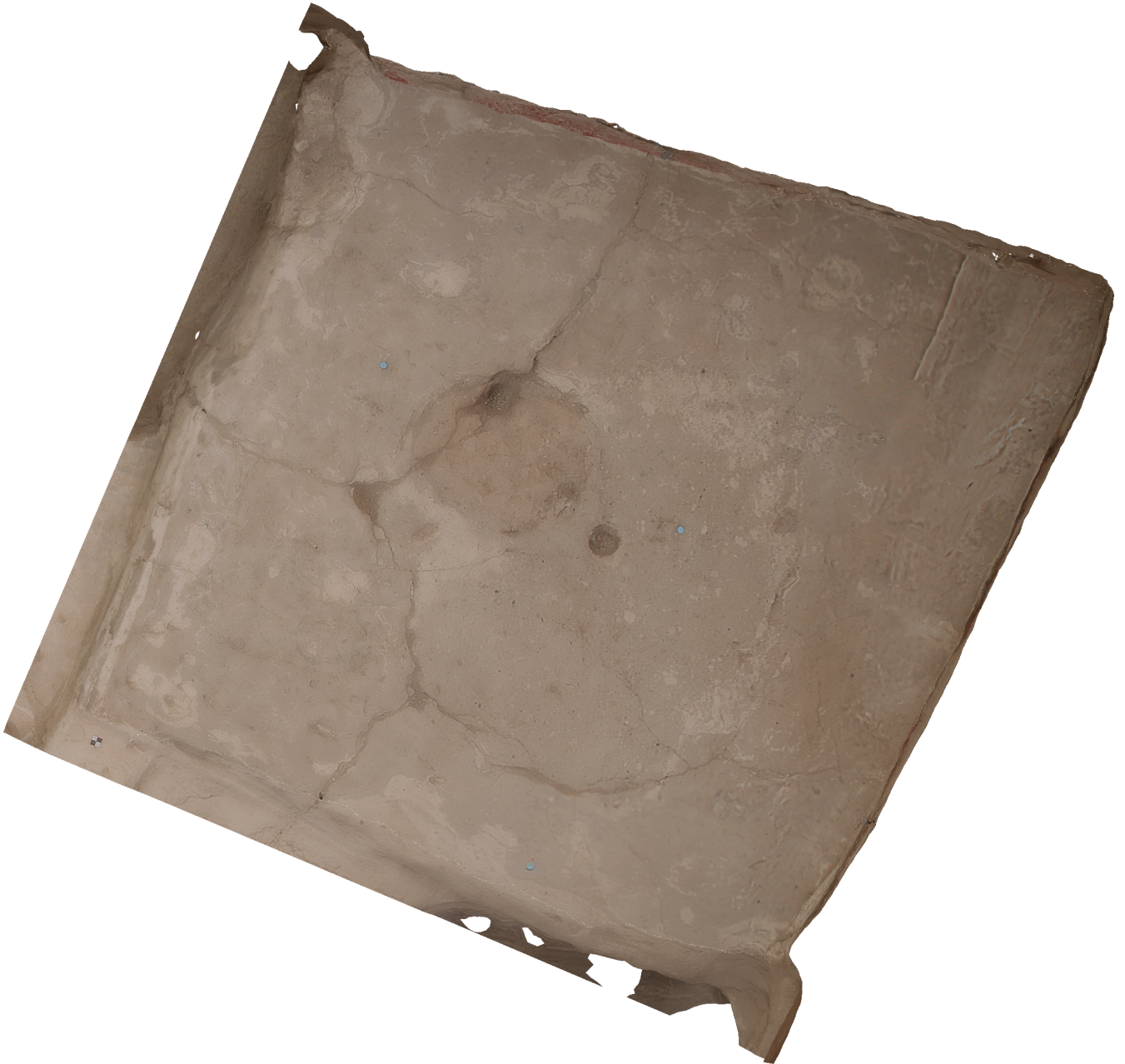


Agisoft PhotoScan

Processing Report
01 November 2014



Survey Data

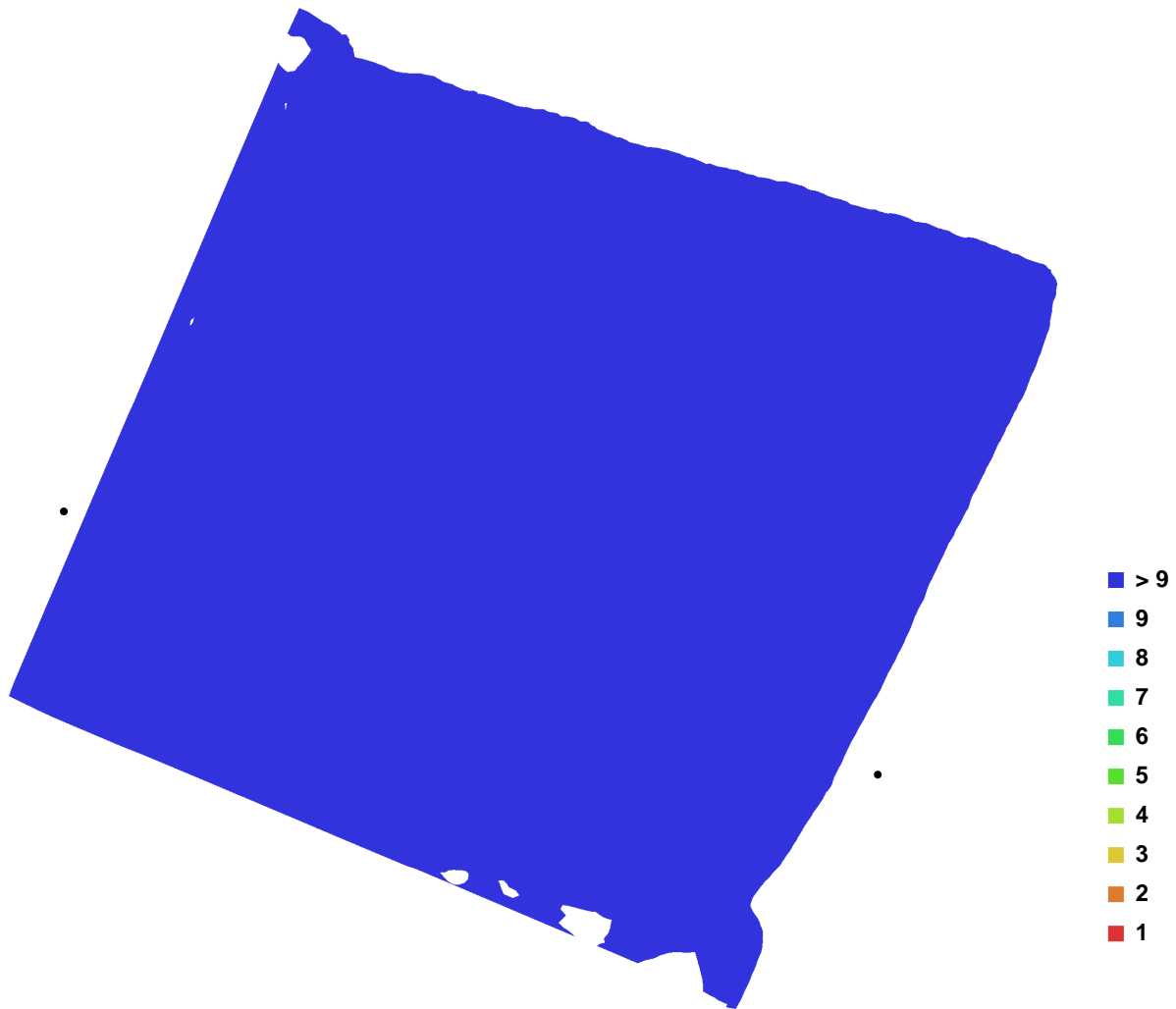


Fig. 1. Camera locations and image overlap.

Number of images:	25	Camera stations:	25
Flying altitude:	5.24056 m	Tie-points:	75990
Ground resolution:	0.000680952 m/pix	Projections:	194093
Coverage area:	2.81999e-006 sq km	Error:	0.677113 pix

Camera Model	Resolution	Focal Length	Pixel Size	Precalibrated
Canon EOS 550D (15 mm)	5184 x 3456	15 mm	4.4036 x 4.4036 um	No

Table. 1. Cameras.

Ground Control Points



Fig. 2. GCP locations.

Label	X error (m)	Y error (m)	Z error (m)	Error (m)	Projections	Error (pix)
C10	-0.007546	0.004511	0.002206	0.009064	16	0.000078
C2	-0.000504	0.003752	-0.006804	0.007786	18	0.000077
C23	0.002434	0.008094	-0.004545	0.009597	15	0.000093
C27	-0.000094	-0.001279	-0.000466	0.001365	16	0.000071
M18	0.004952	-0.002995	0.004156	0.007125	16	0.000071
M7	0.001319	-0.011101	0.003381	0.011679	24	0.000092
Total	0.003860	0.006242	0.004098	0.008405	105	0.000082

Table. 2. Control points.

Digital Elevation Model

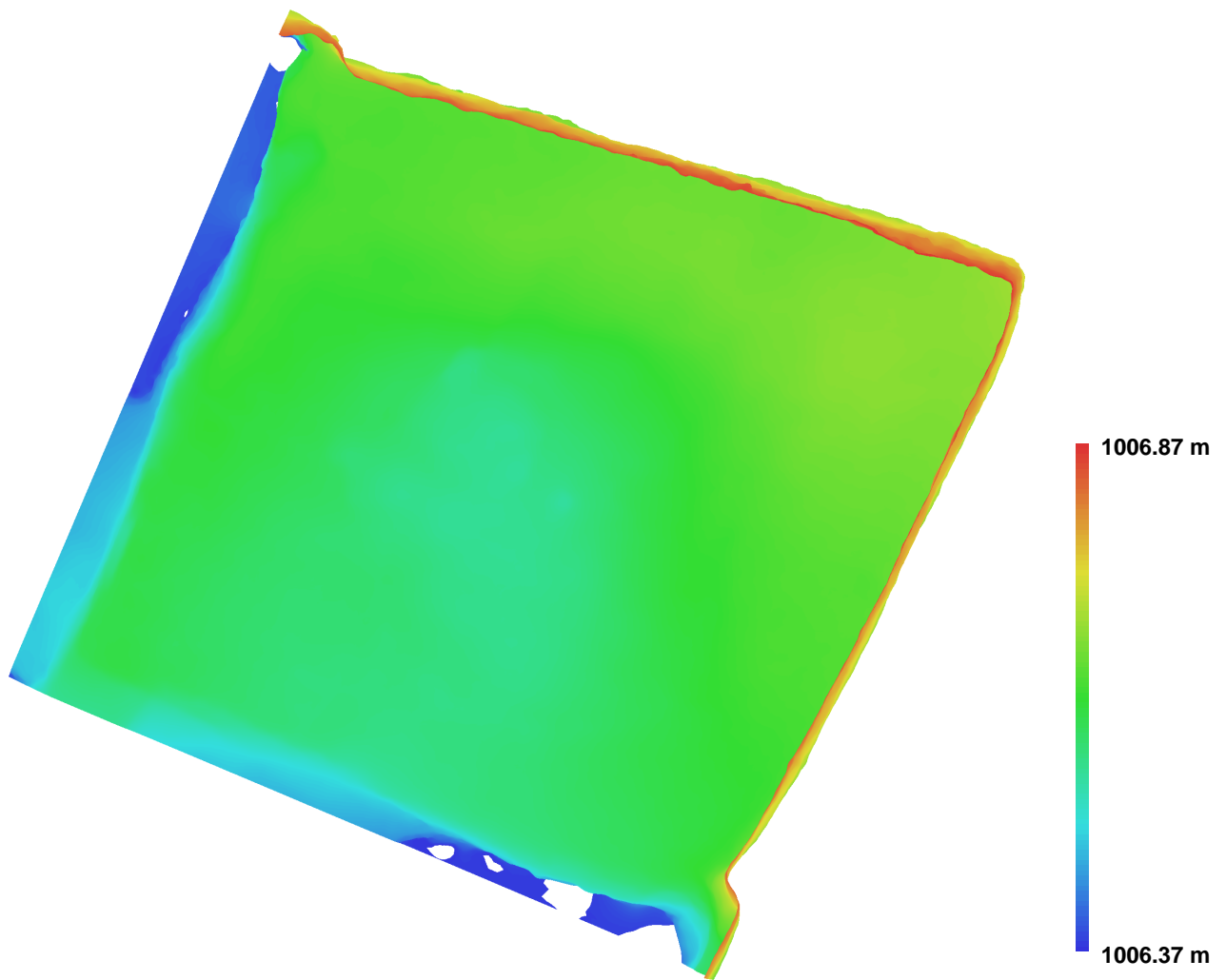


Fig. 3. Reconstructed digital elevation model.

Resolution: 0.00272381 m/pix
Point density: 134787 points per sq m