

*Report and Index of
Underway Marine geophysical Data*

Laperouse Expedition

Leg 02

(LPRS02RR)

R/V Roger Revelle

(Issued Jul 2002)

Ports:

Newport, OR (26-Jun-02)

to

Newport, OR (27-Jul-02)

Chief Scientist: Chris Goldfinger

OSU

gold@oce.orst.edu

Computer Tech - Steve Foley

Resident Tech - Bob Wilson

Post-Cruise processing and report preparation by the
Shipboard Technical Support Group,
Scripps Institution of Oceanography
La Jolla, CA 92093-0223

Note: *This is an index of underway geophysical data edited and processed after the completion of the leg and is intended primarily for informal use within the institution. This document is not to be rereduced or distributed outside Scrips without prior approval of the chief scientist or Shipboard Technical Support, Scripps Institution of Oceanography, La Jolla, California 92093-0223*

STS Cruise ID#

Report and index of Navigation and Underway Geophysical Data

Contents:

Index Chart - give track of cruise leg, dates, ports.

Track Charts - annotated with dates and hour ticks.

Profiles - depth, magnetic and gravity free air anomaly vs. distance. (Sections of track with seismic reflection data have a wide black line along the bottom of the profile.)

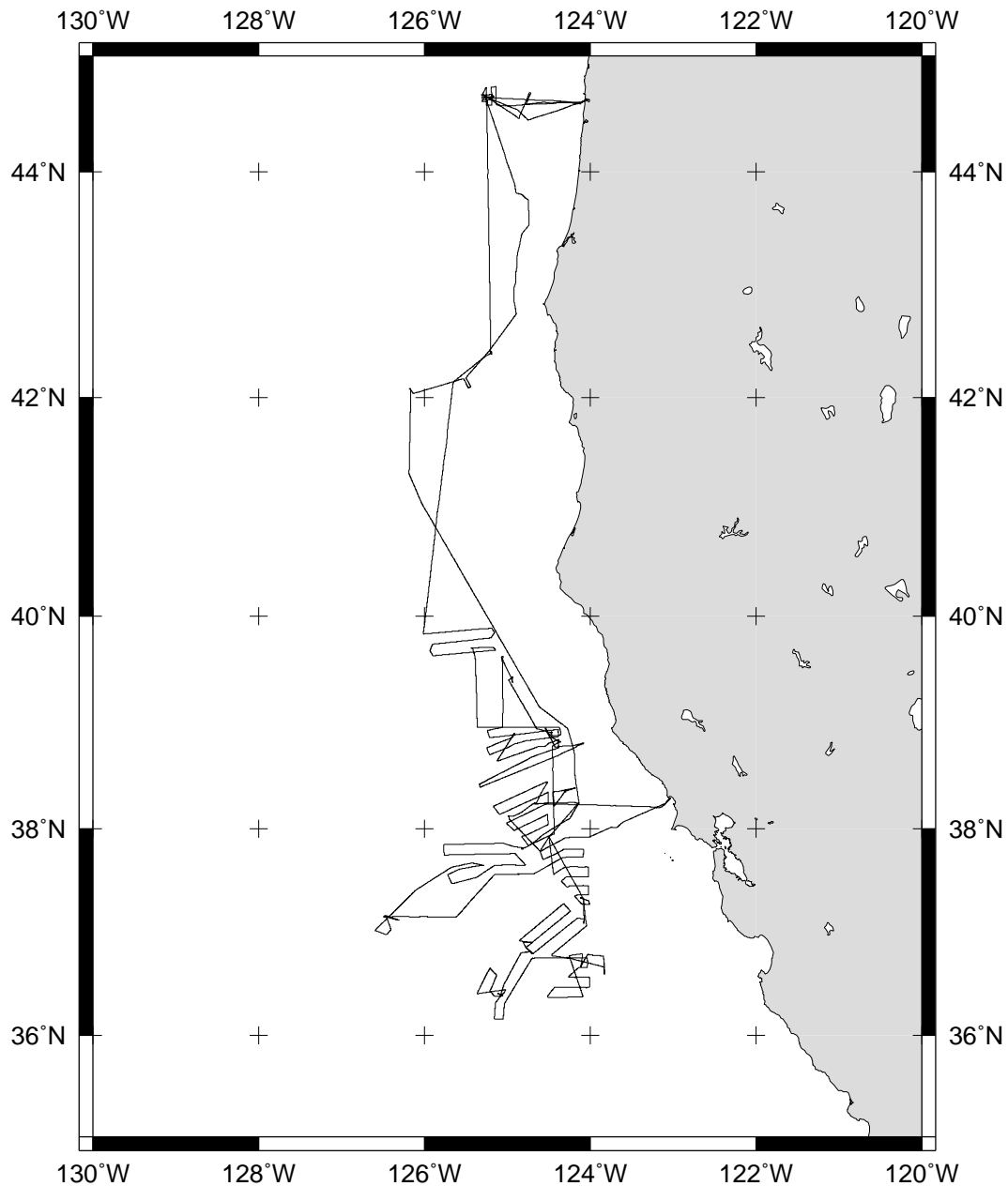
Sample Index - list of begin/end times and positions of all underway records as well as samples and measurements from other disciplines collected on the leg.

Note:

For information on the availability of this current digital data as well as archived digital data contact:

Stephen P. Miller
Geological Data Center
Scripps Institution of Oceanography
La Jolla, California 92093-0220
Phone: (858) 534-1898
Internet email: spmiller@ucsd.edu; or his website: <http://SIOExplorer@ucsd.edu>

Rev 05/2002



LAPEROUSE EXPEDITION LEG 2 (LPRS02RR)

=====

CHIEF SCIENTIST: Chris Goldfinger, Oregon State University

PORTS: Newport - Newport, Oregon

DATES: 27 June - 27 July 2002

SHIP: R/V Revelle

TOTAL MILEAGE OF UNDERWAY DATA COLLECTED

Cruise-3593 miles

Magnetics-none collected

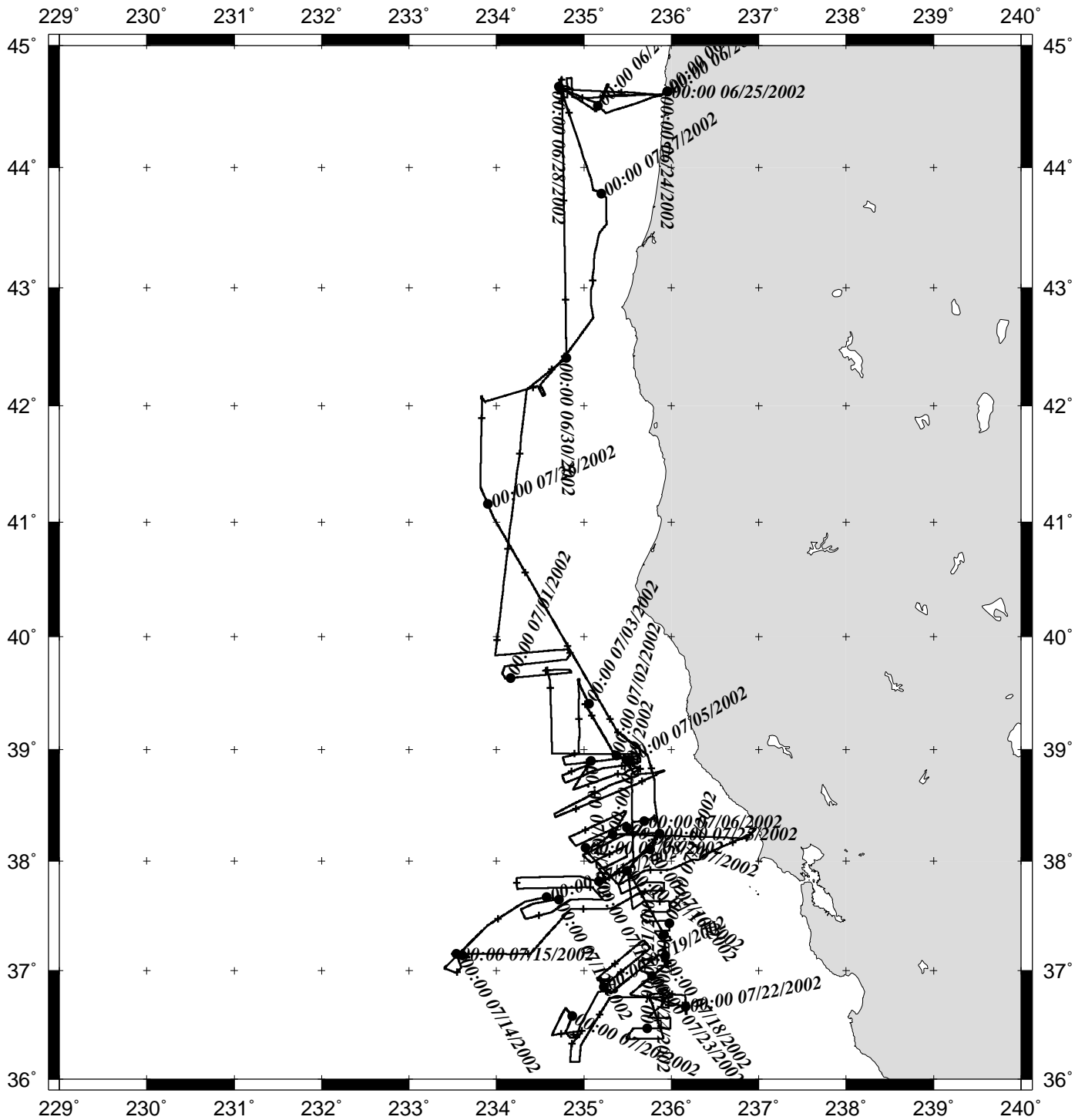
Bathymetry-3223 miles

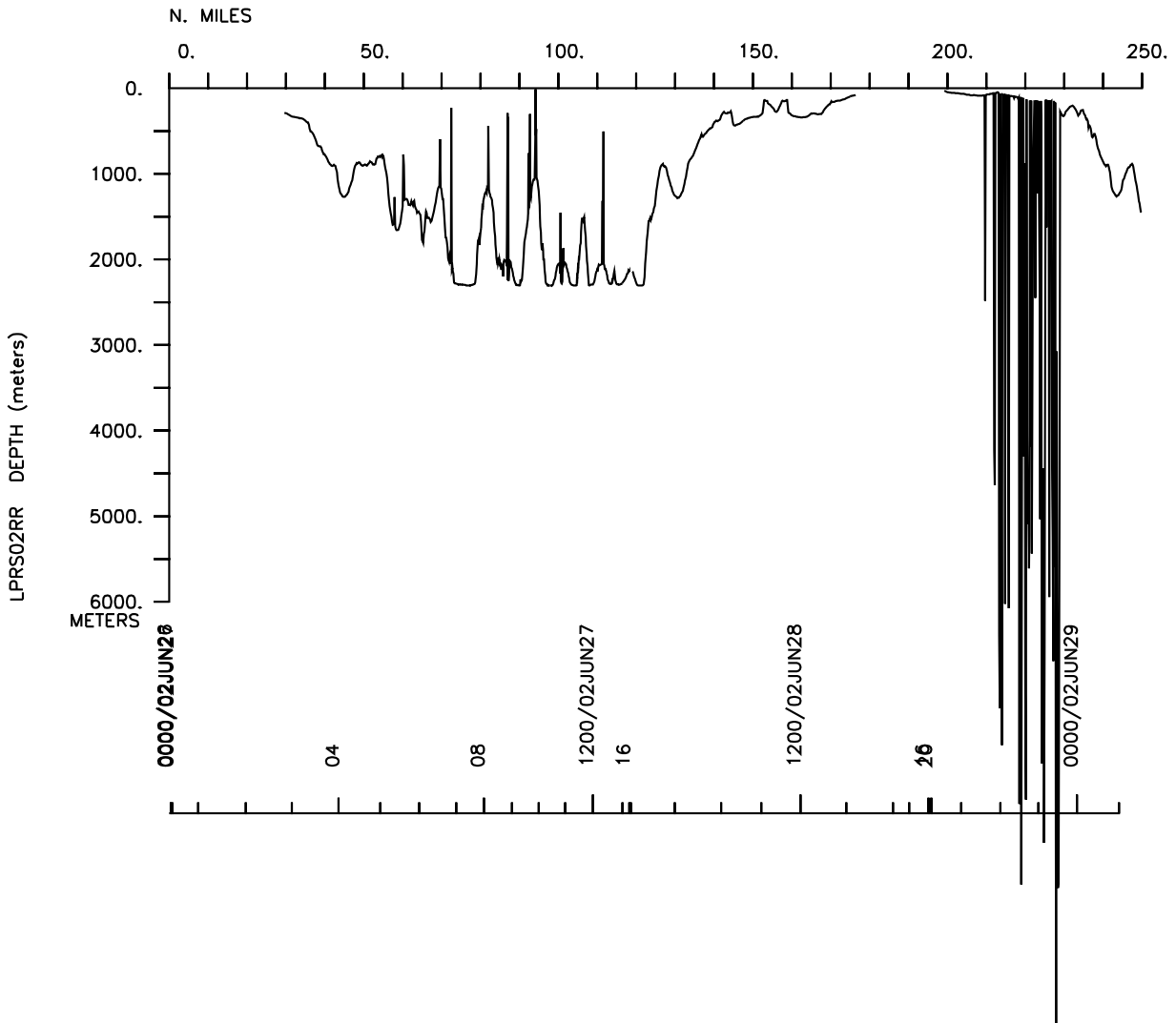
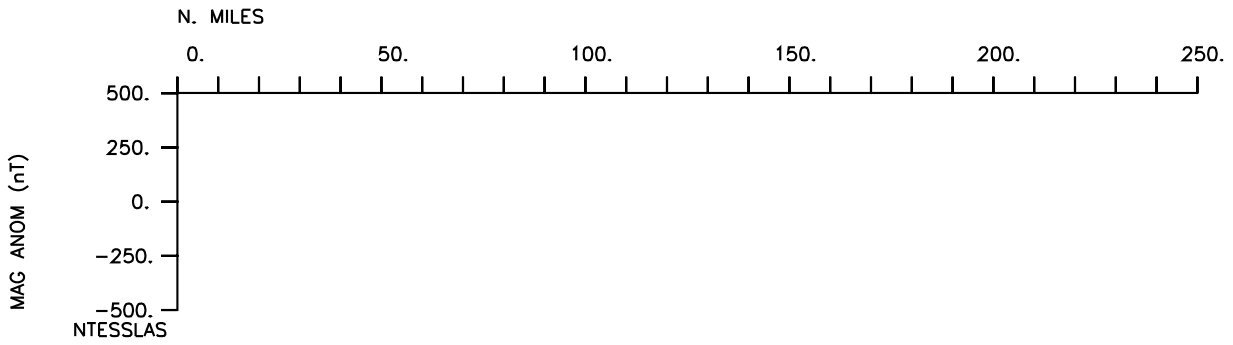
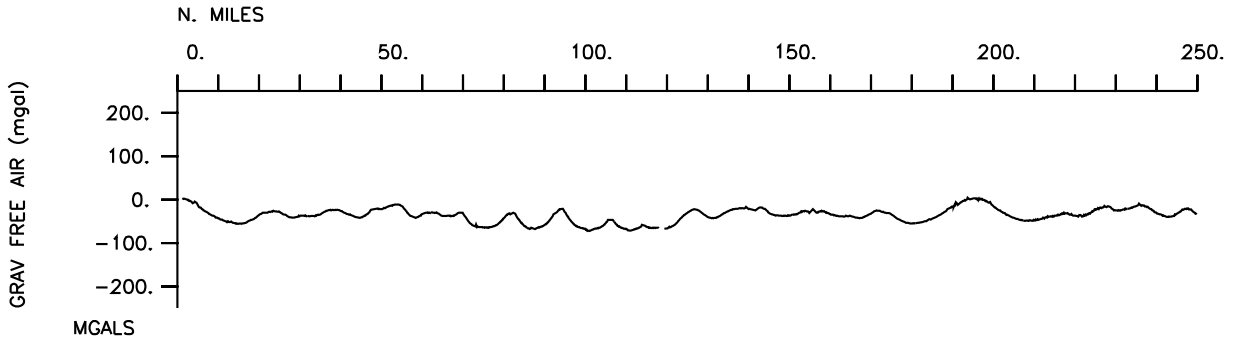
Seismic Reflection-none collected

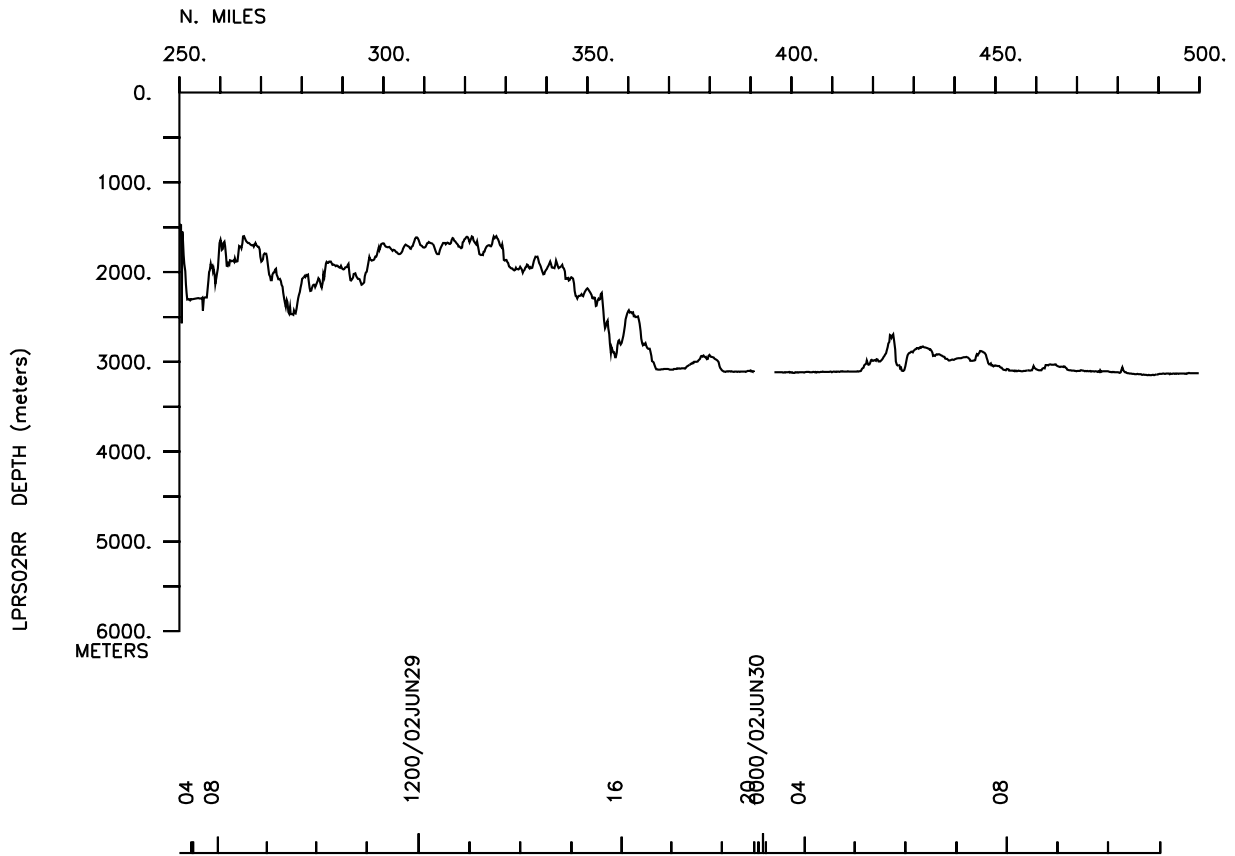
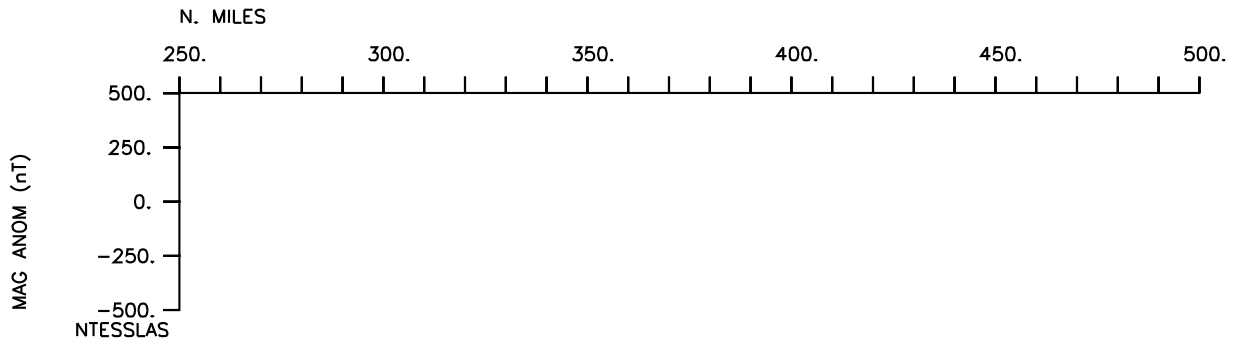
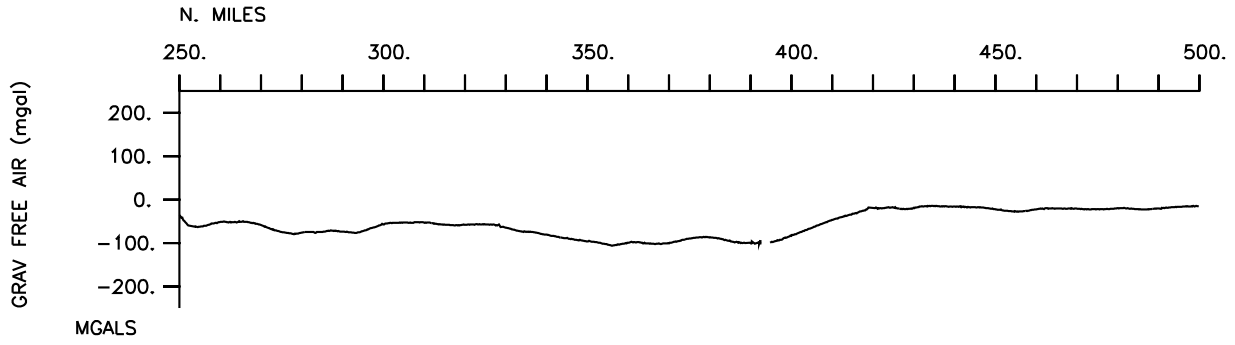
Multibeam-3223 miles

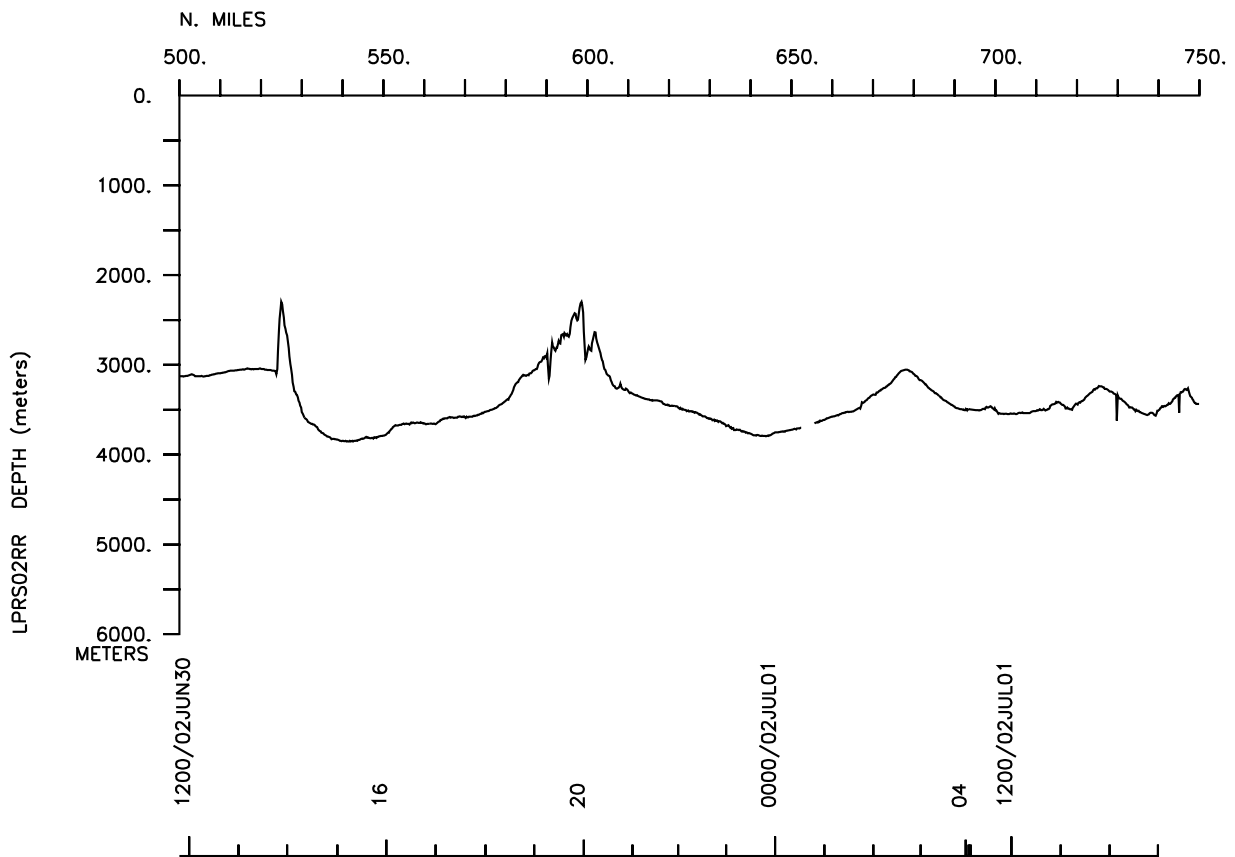
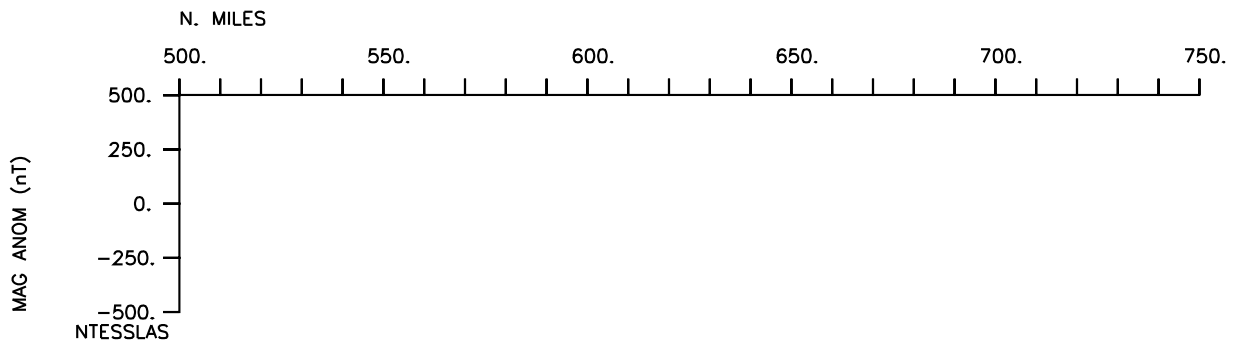
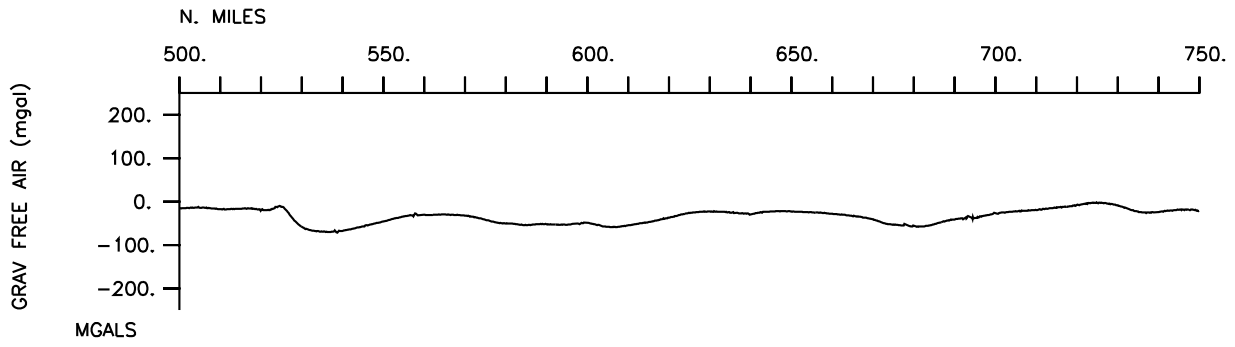
Gravity-3582 miles

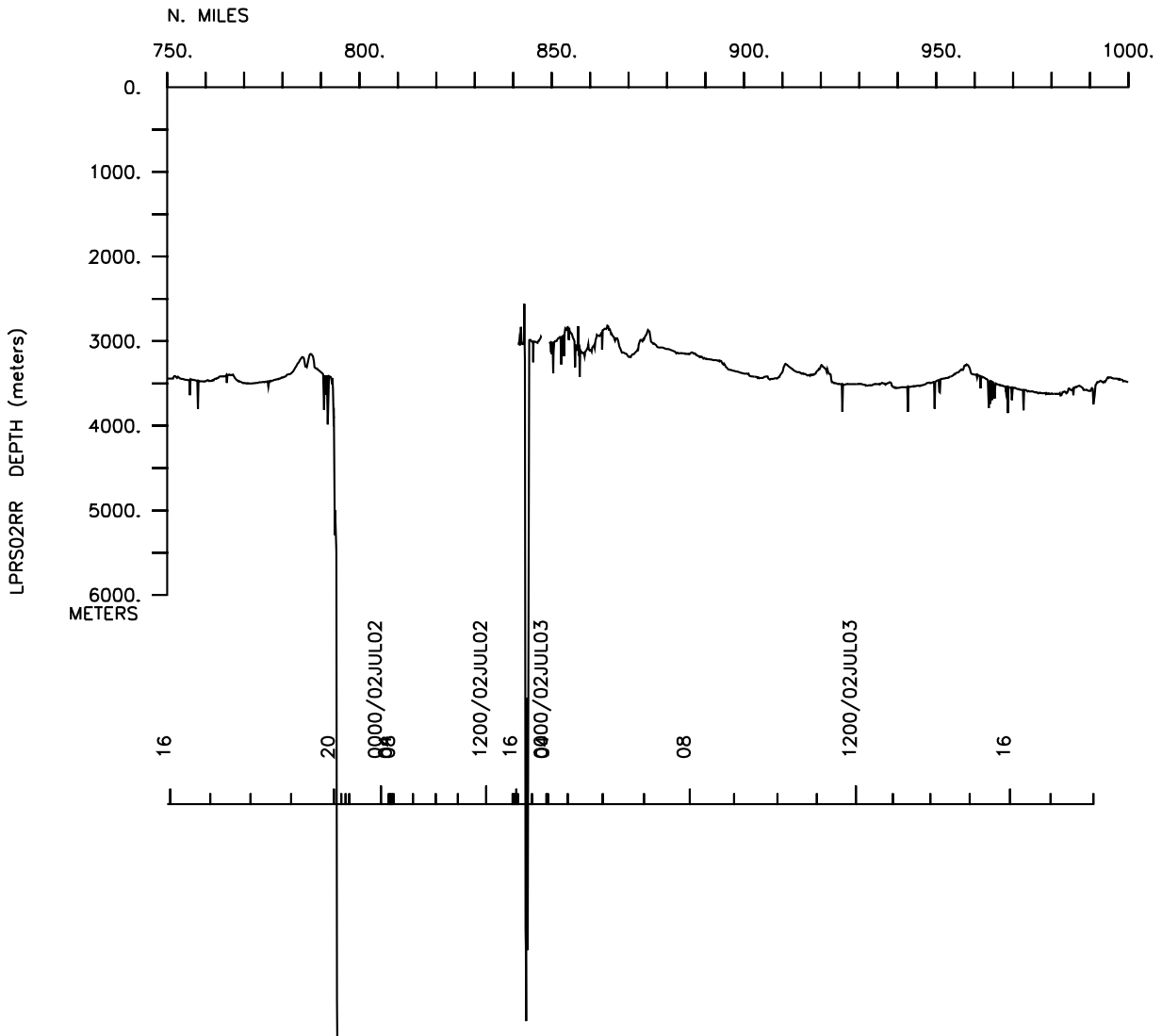
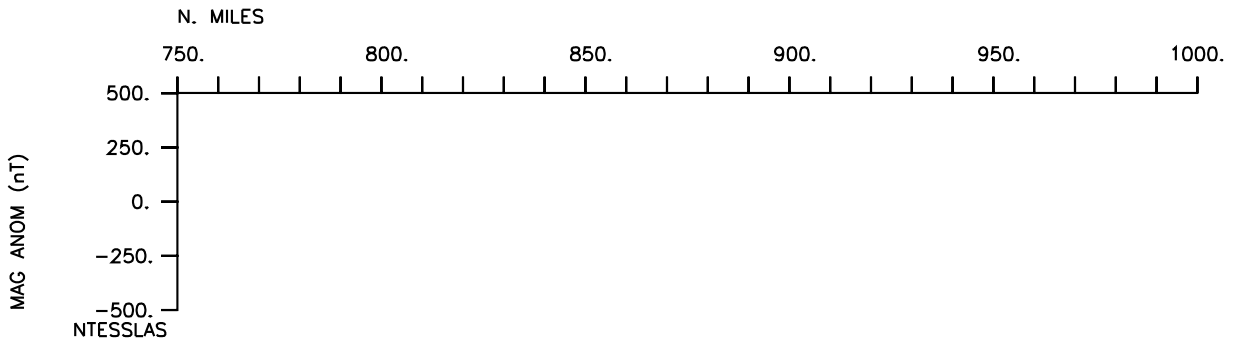
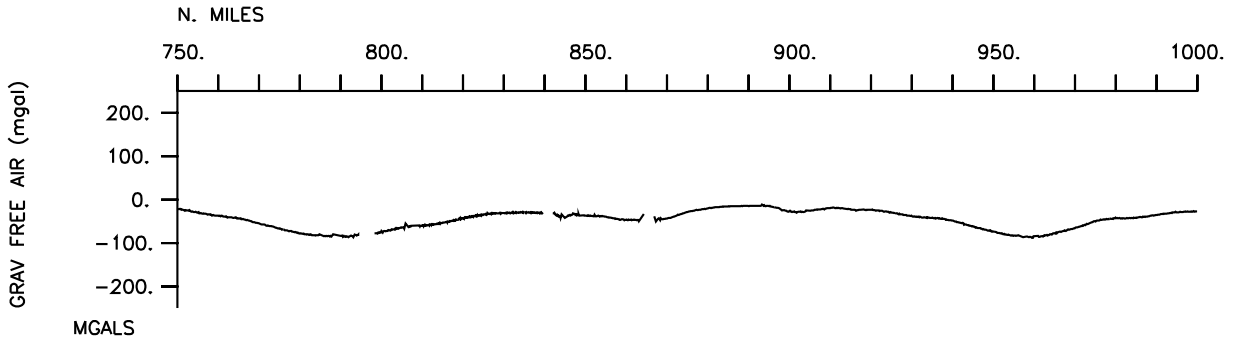
LPRS02RR

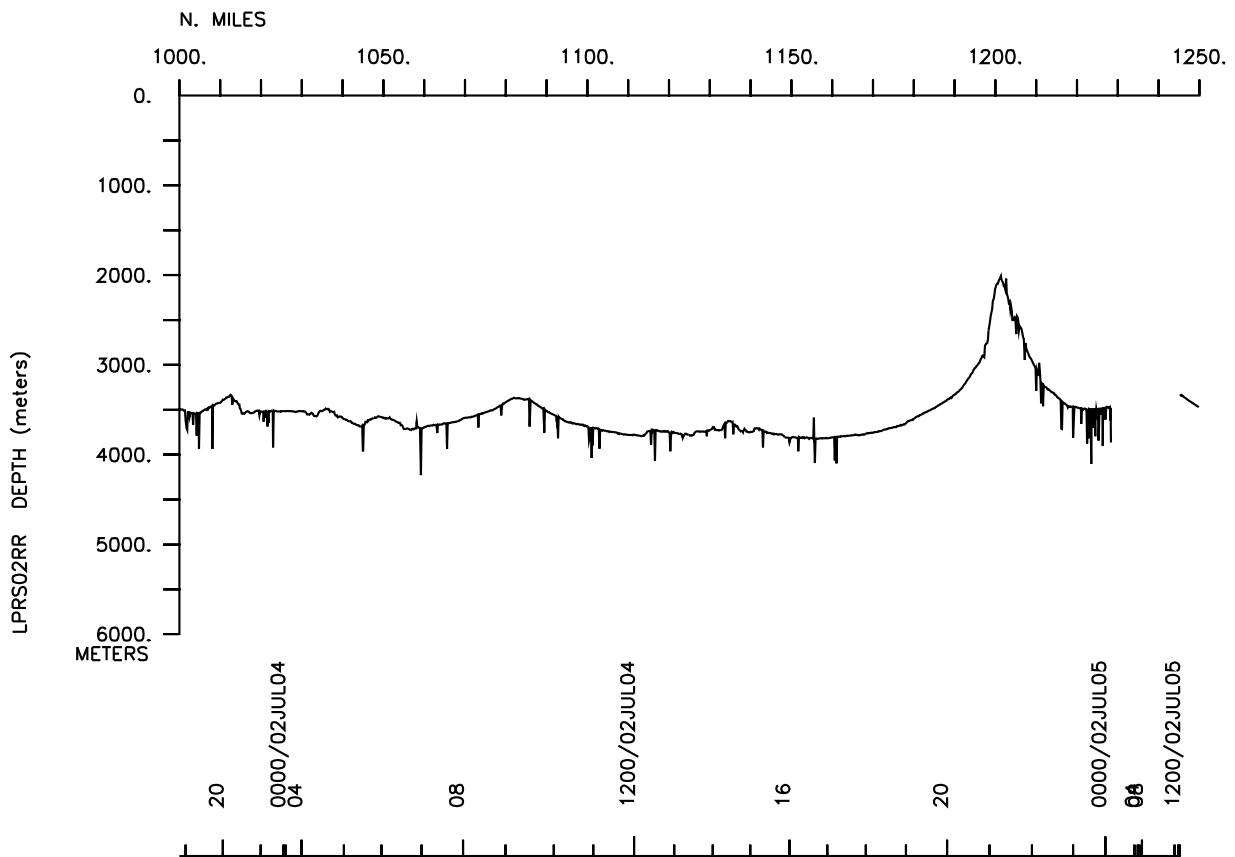
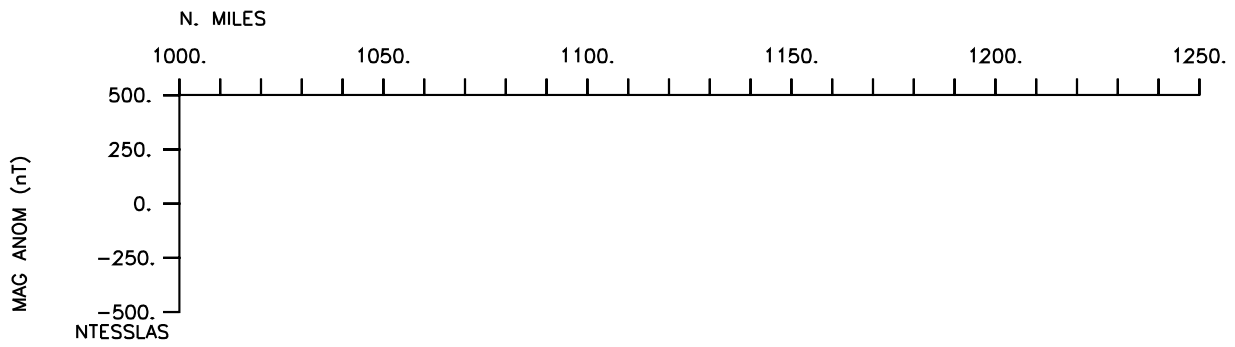
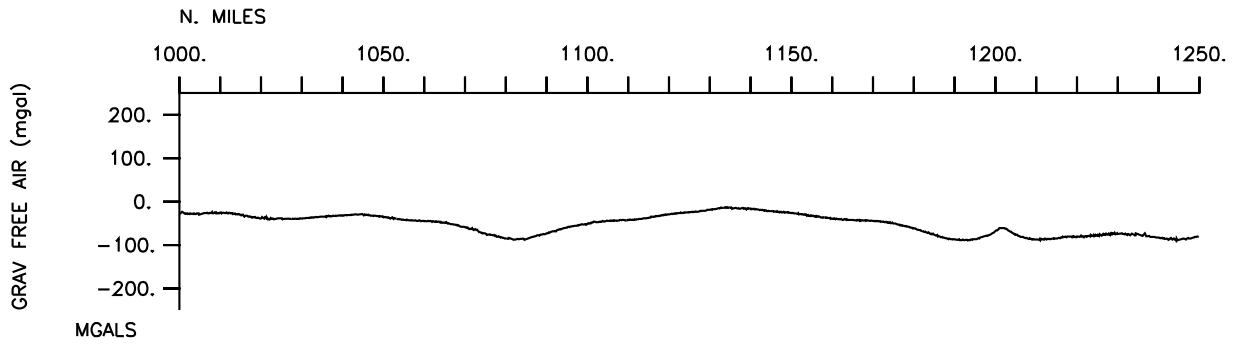


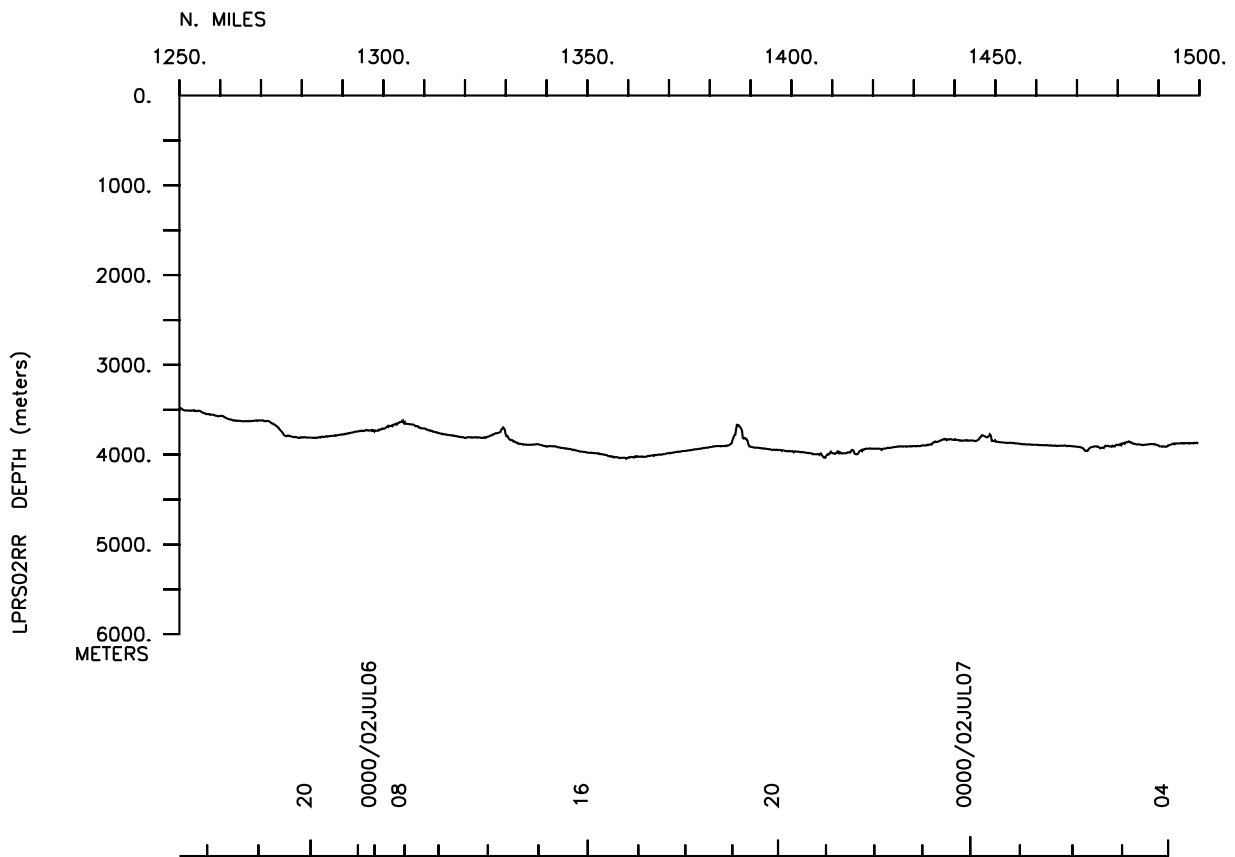
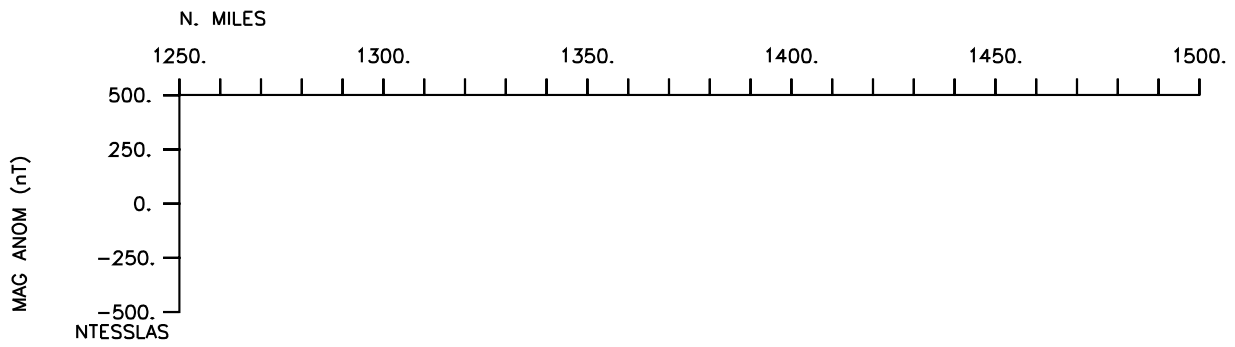
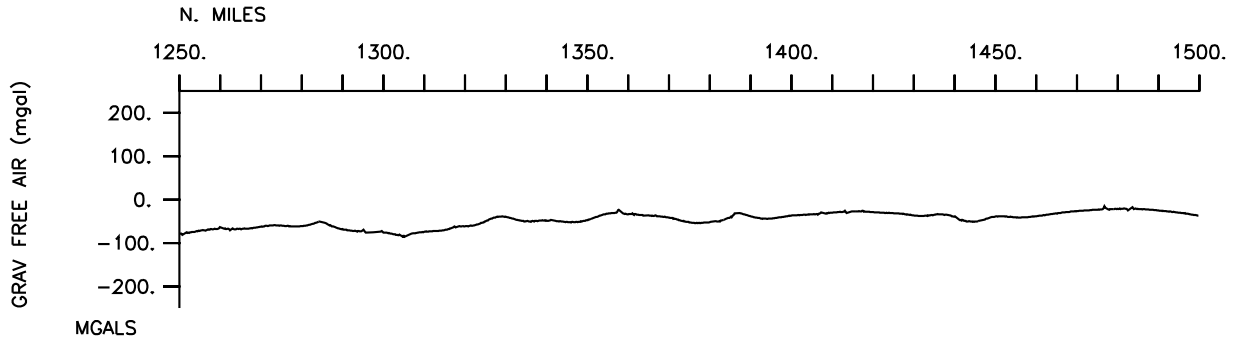


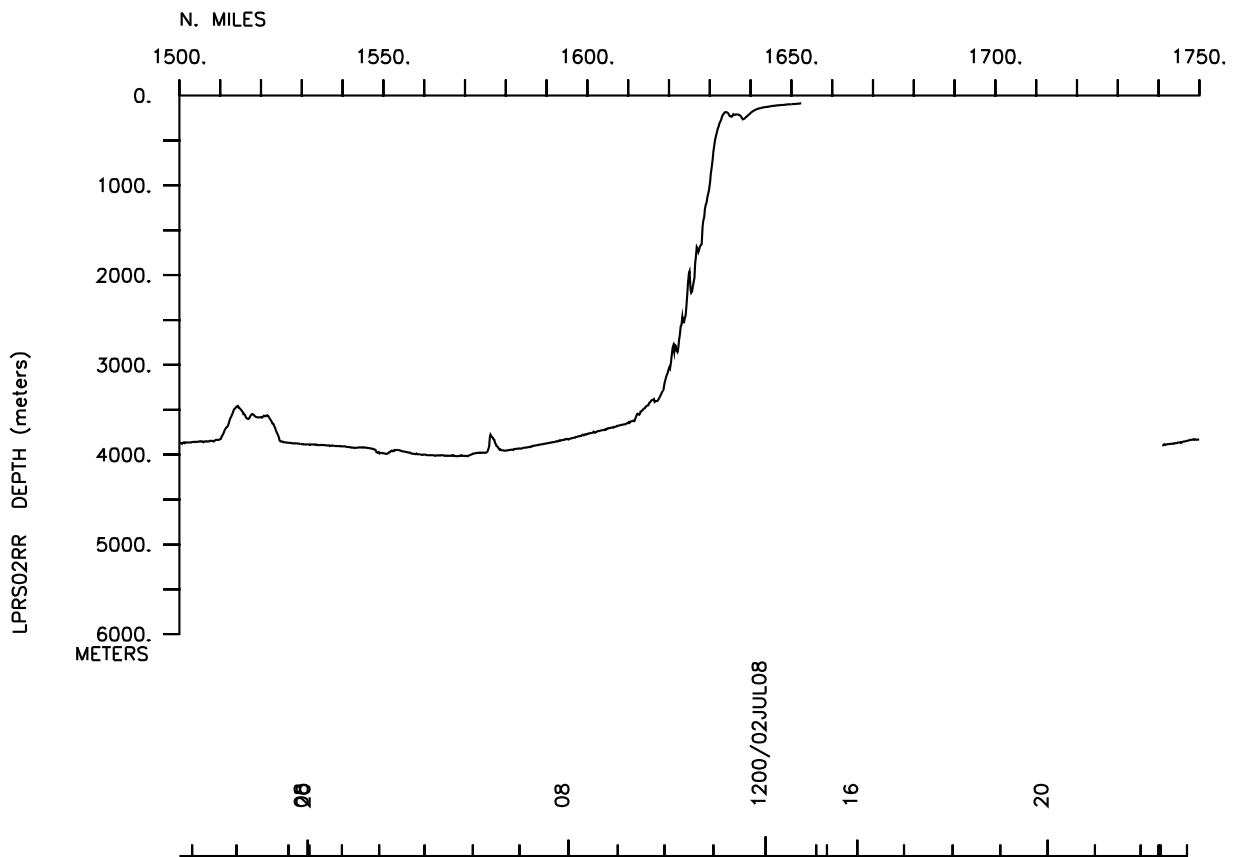
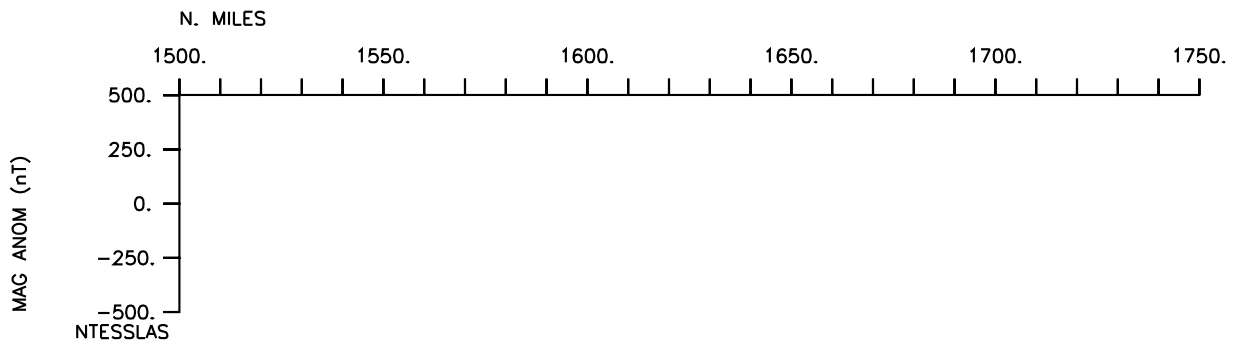
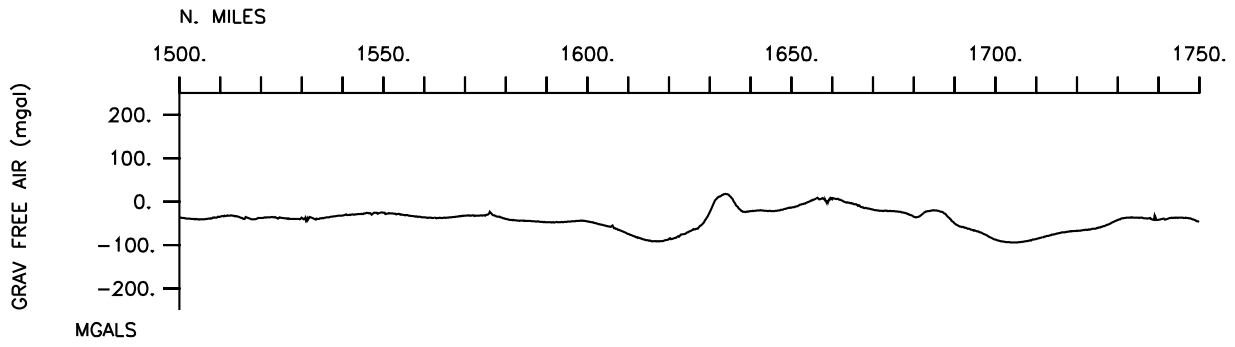


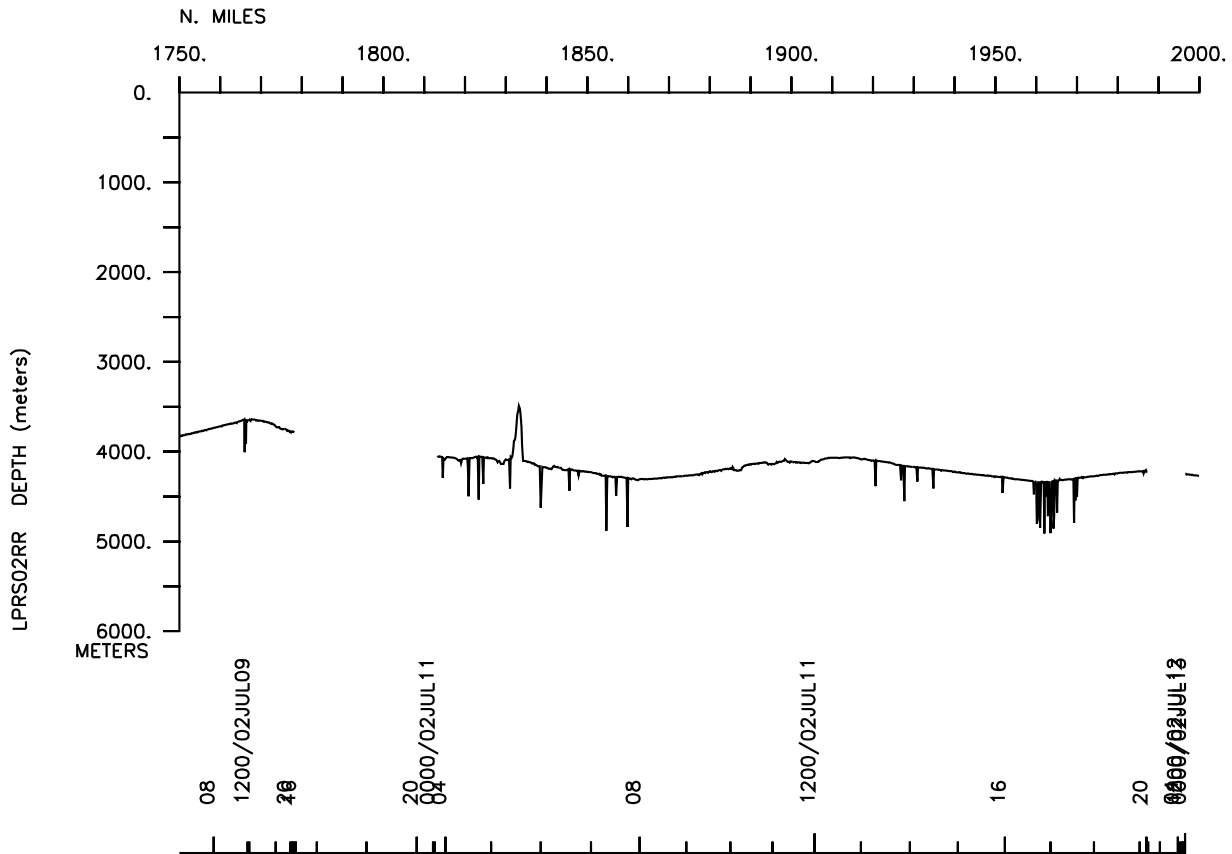
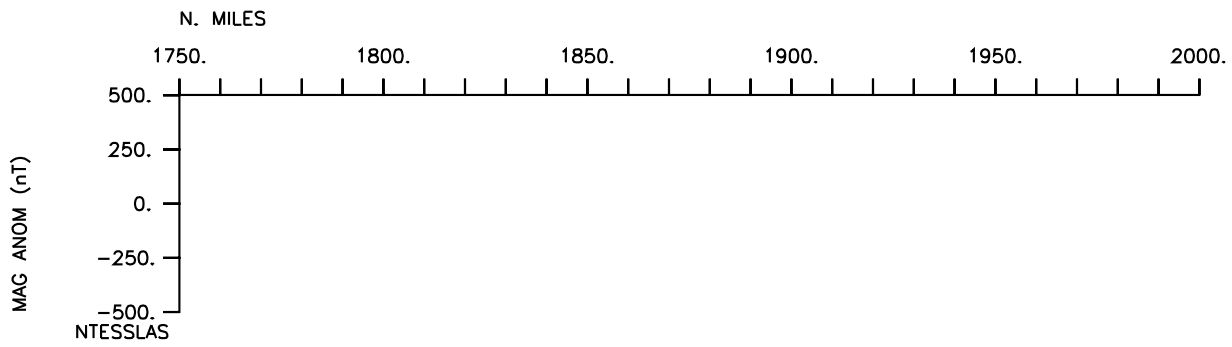
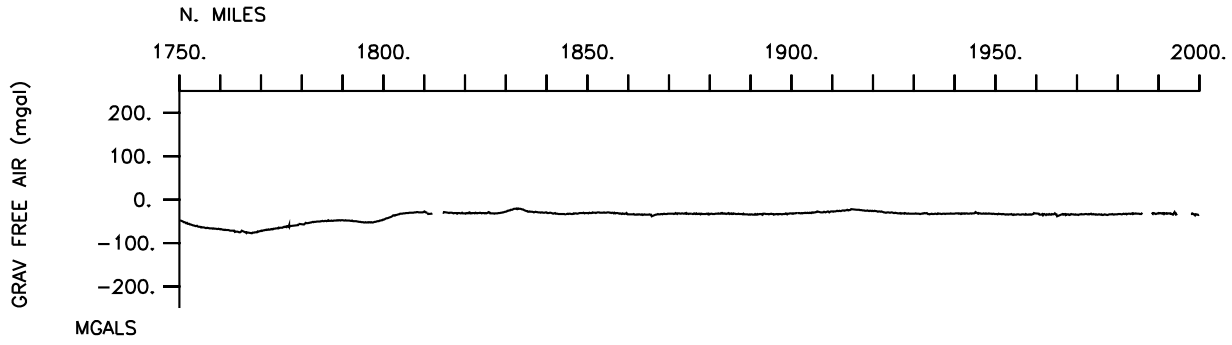


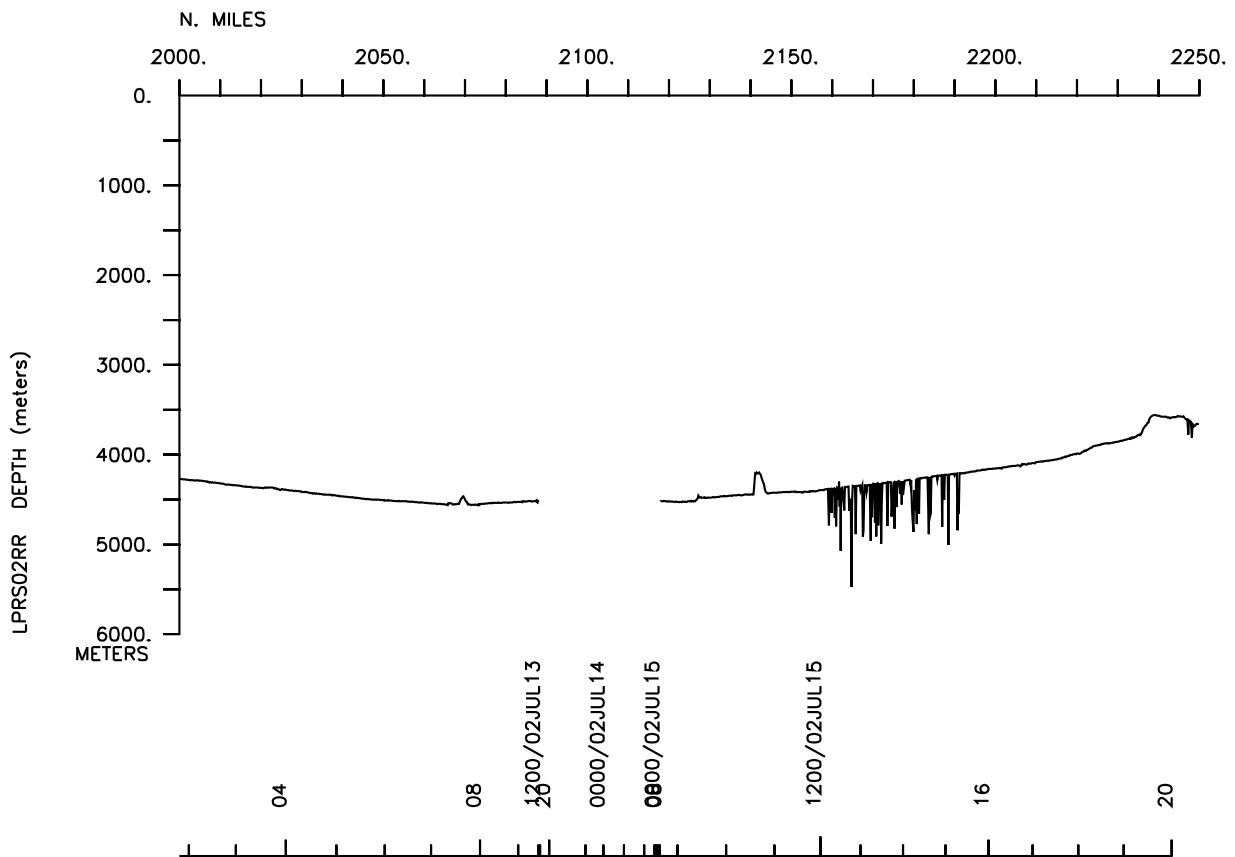
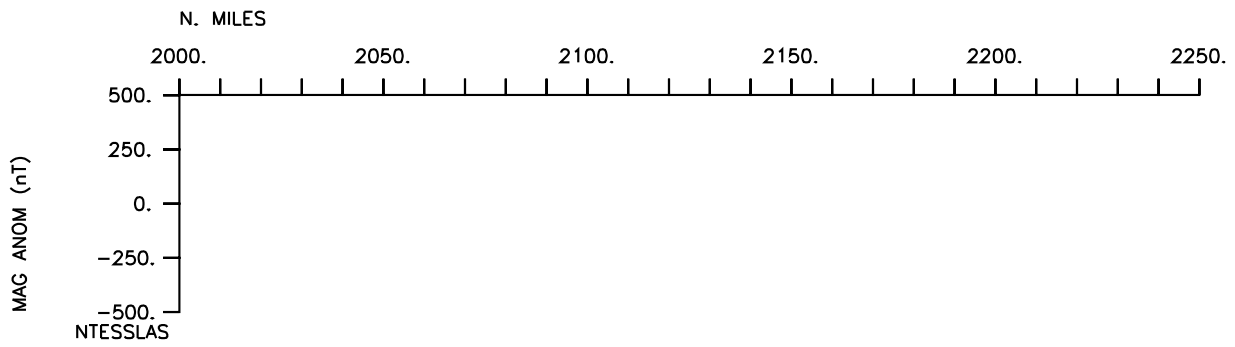
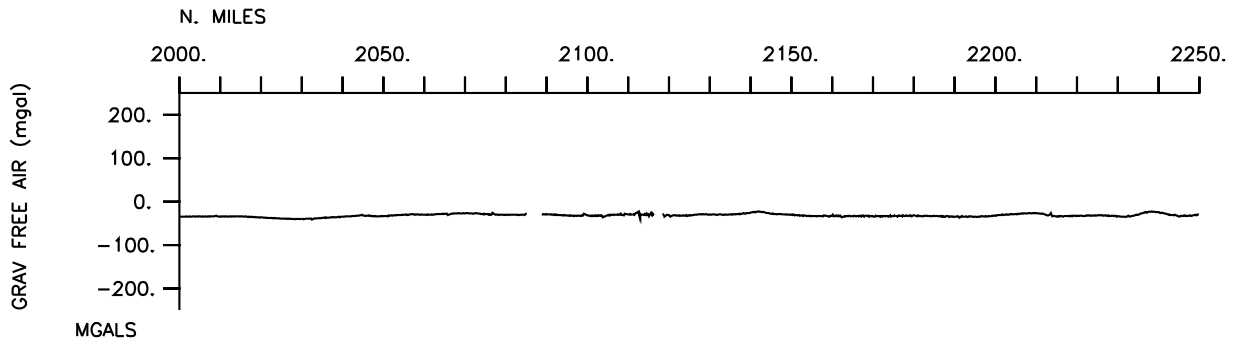


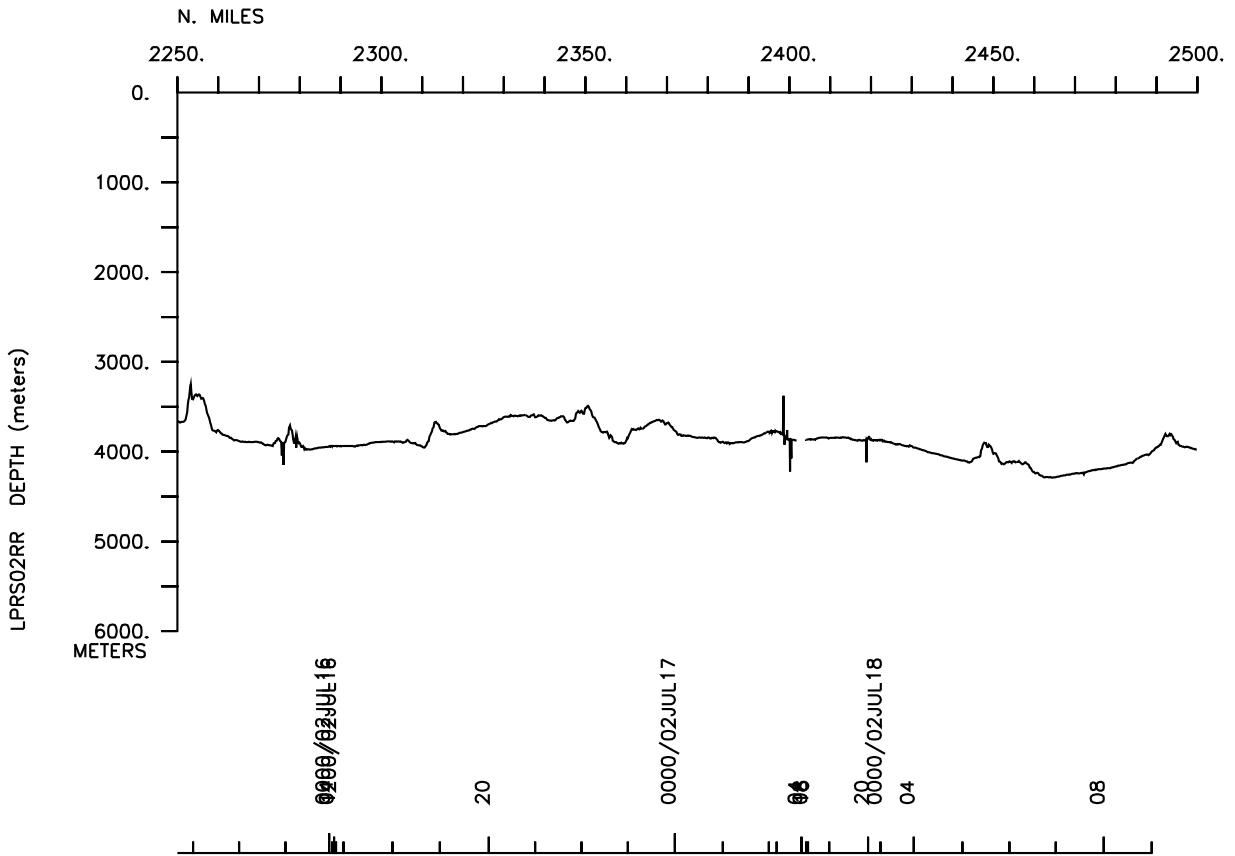
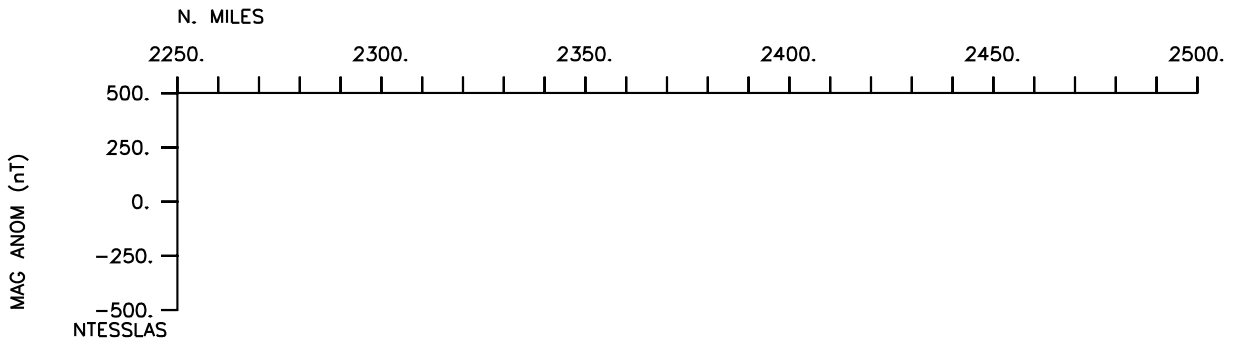
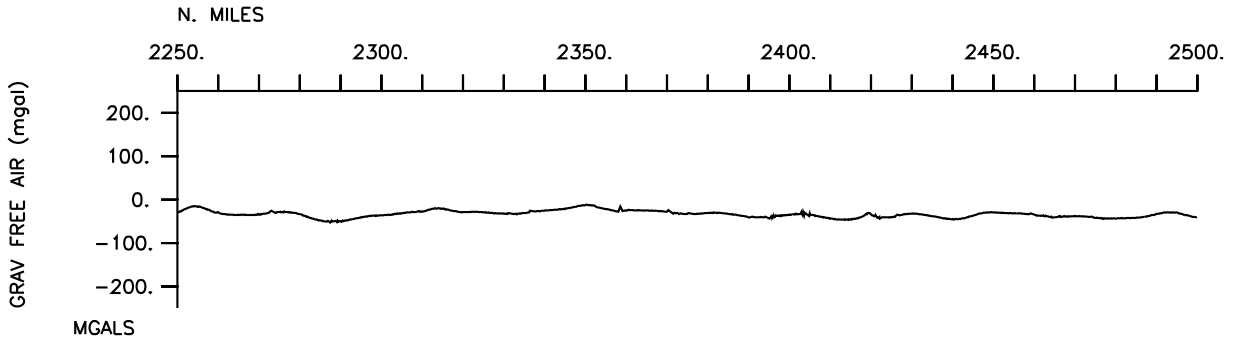


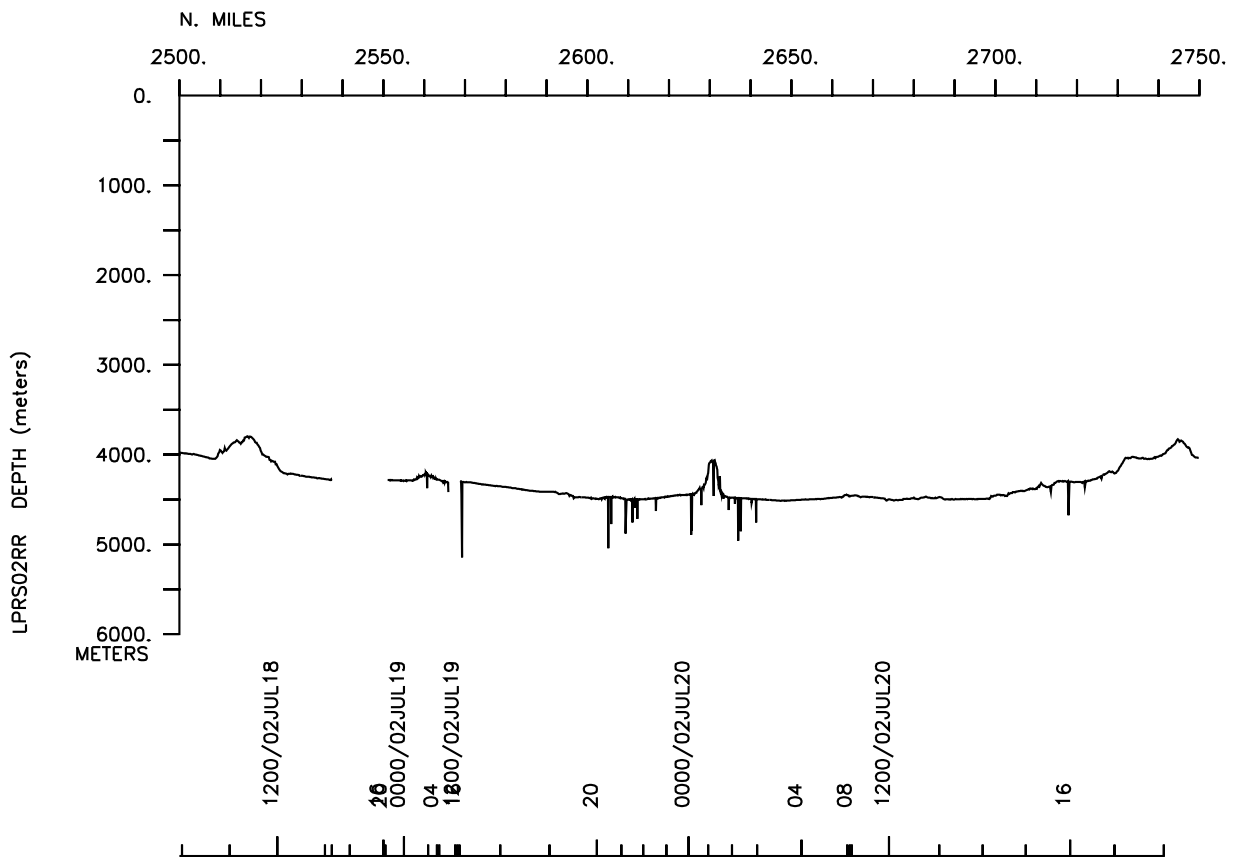
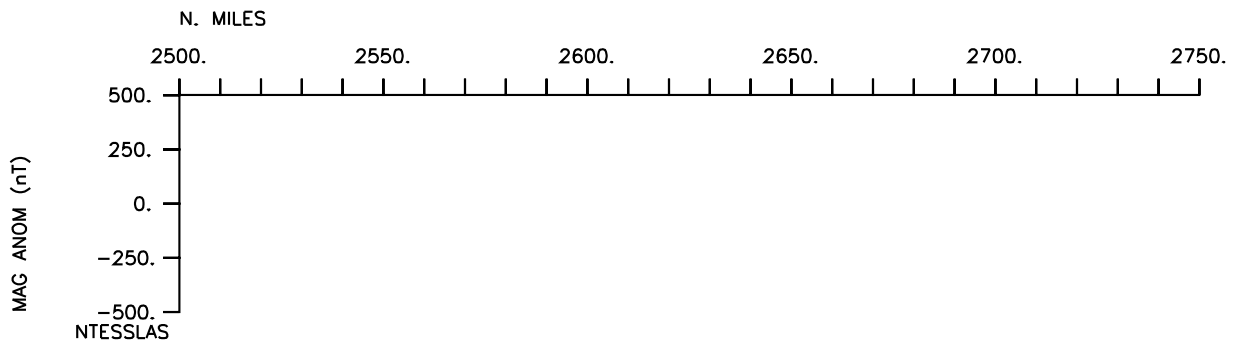
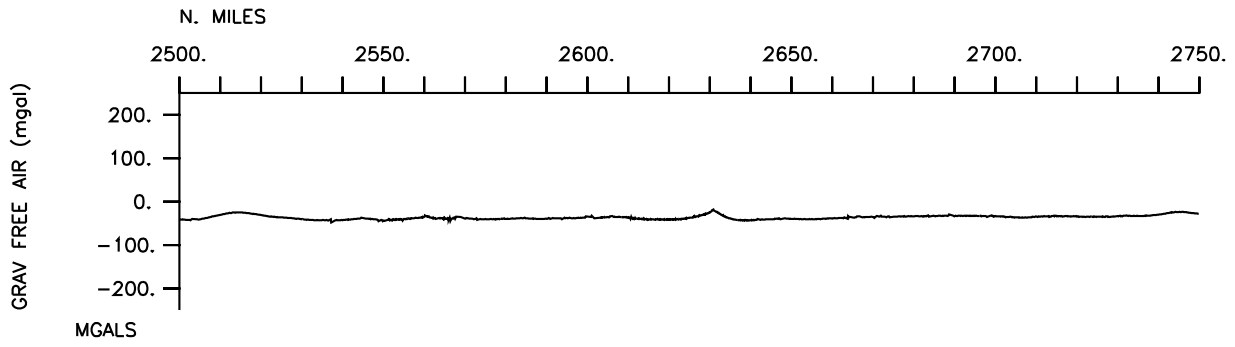


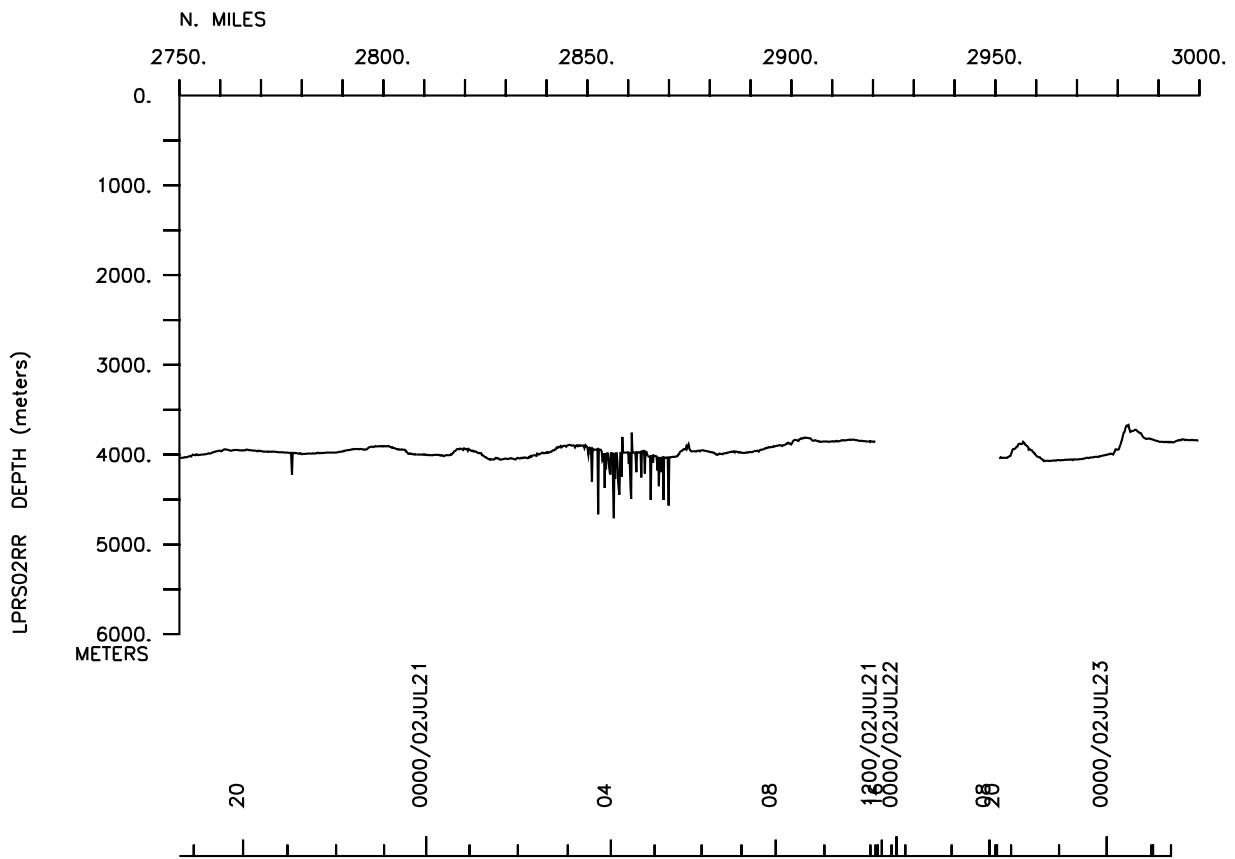
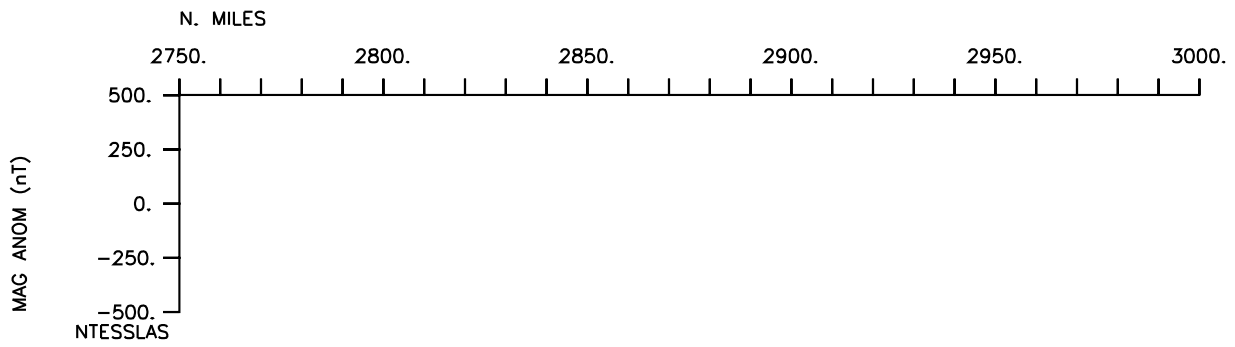
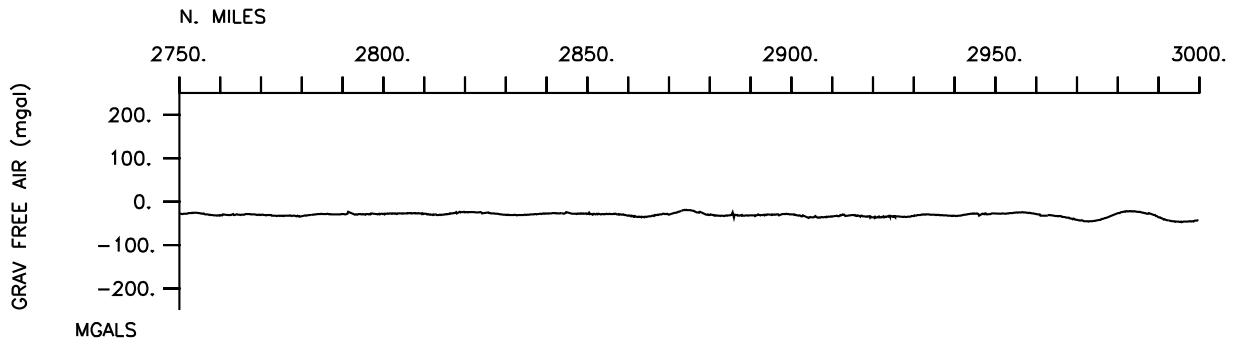


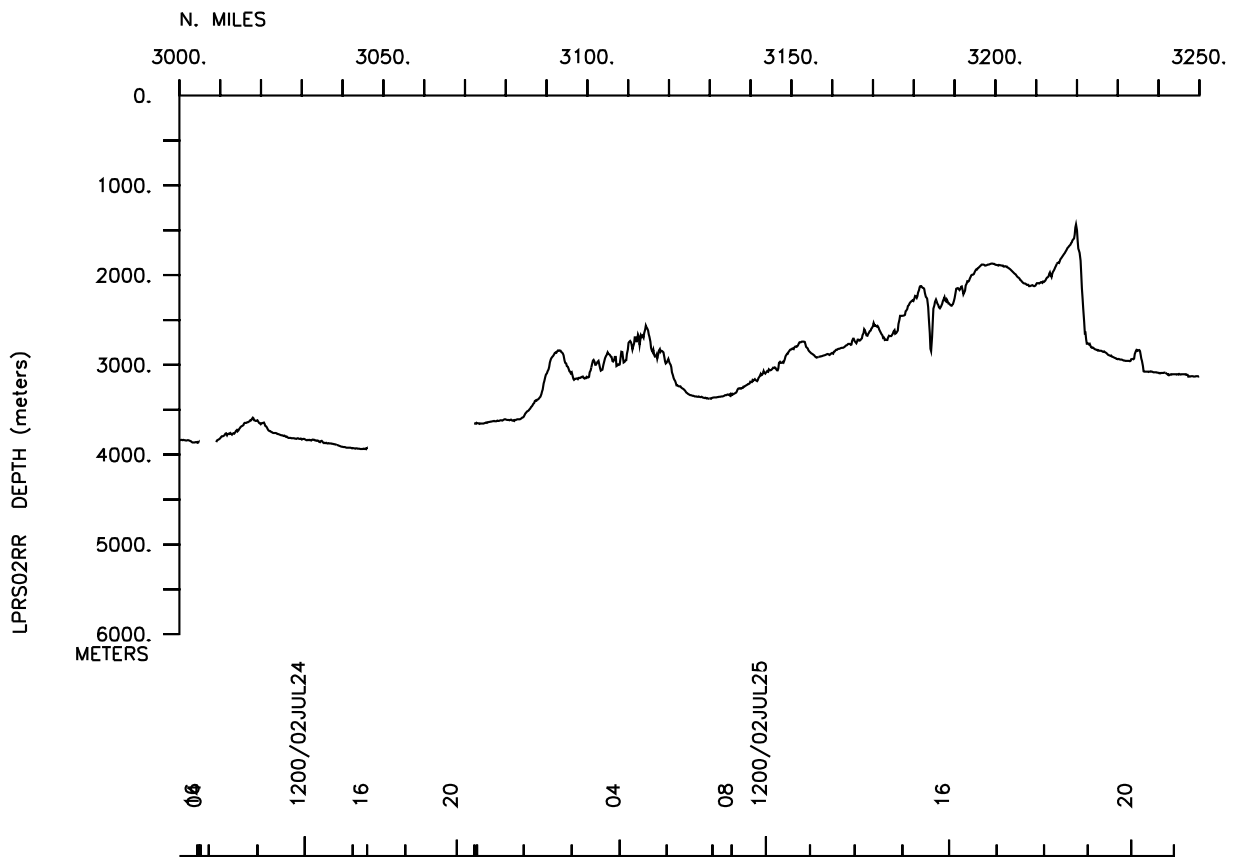
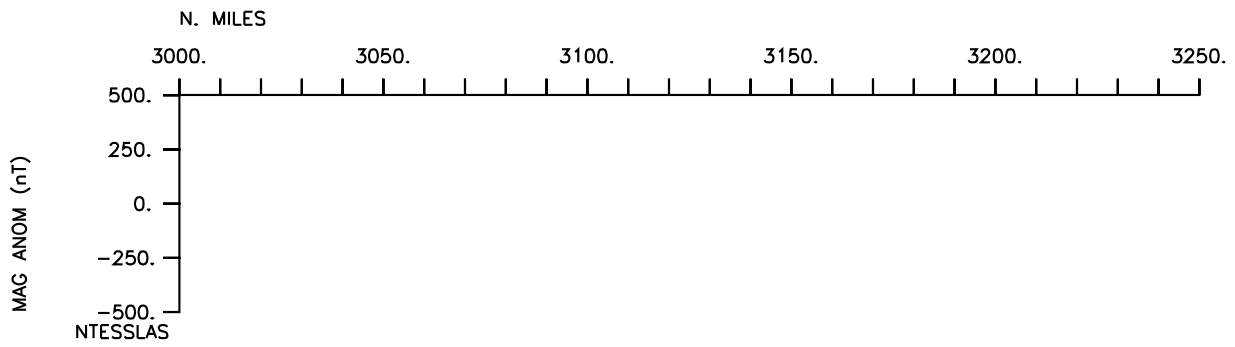
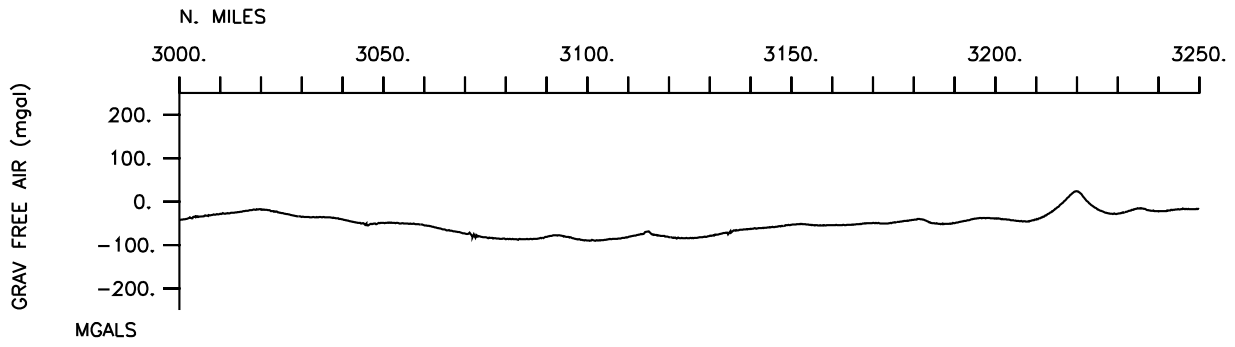


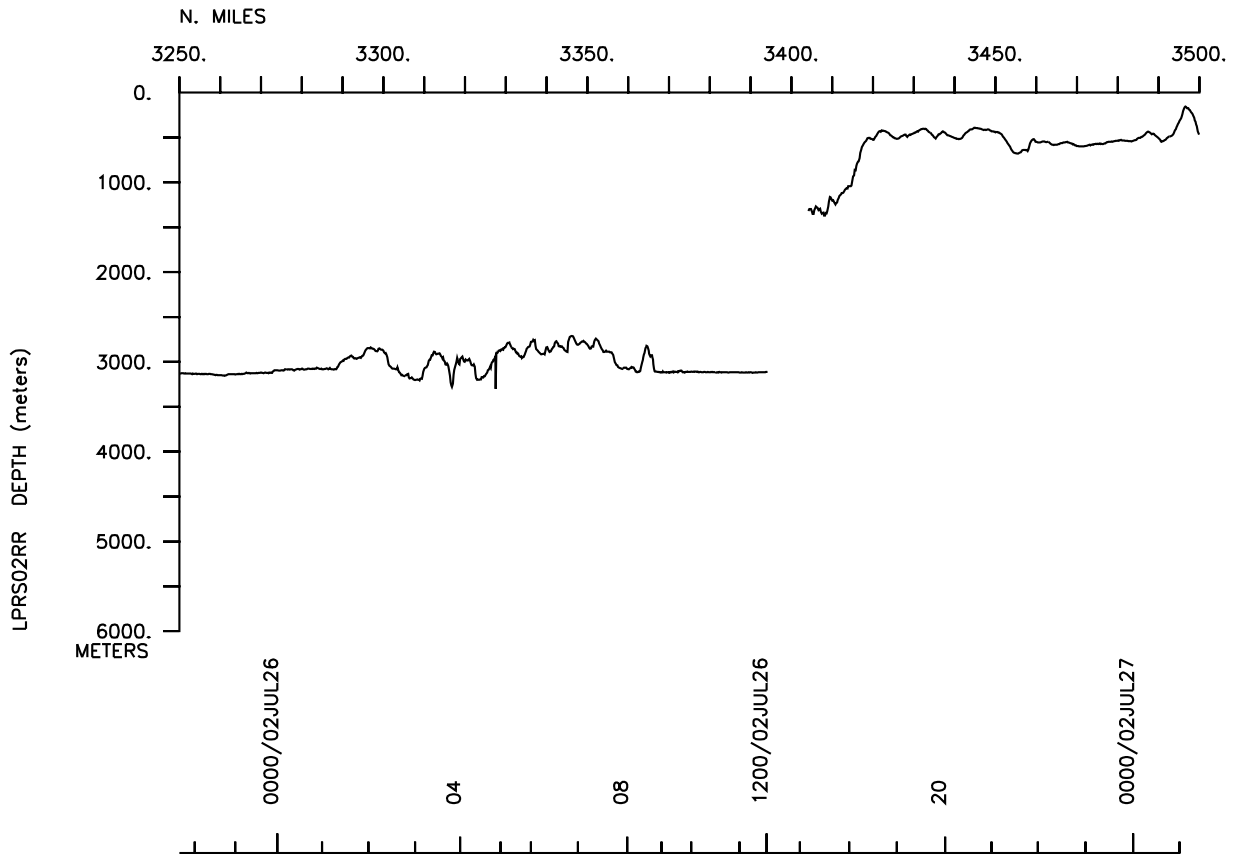
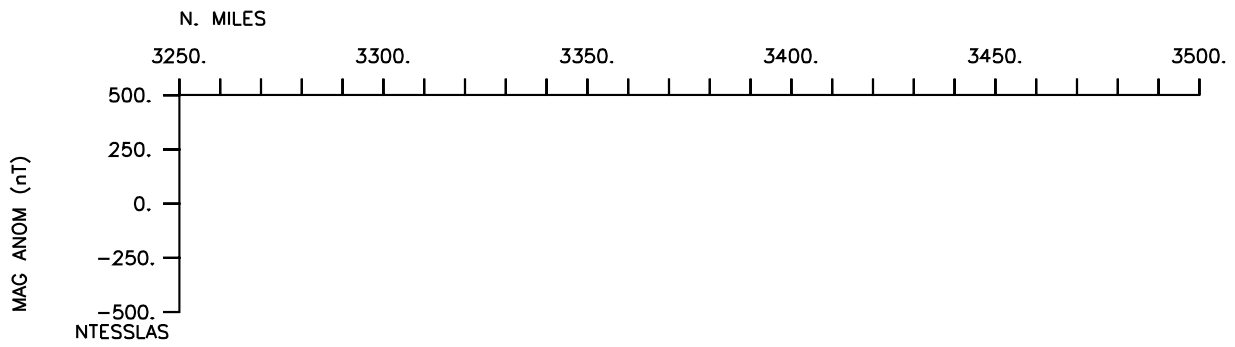
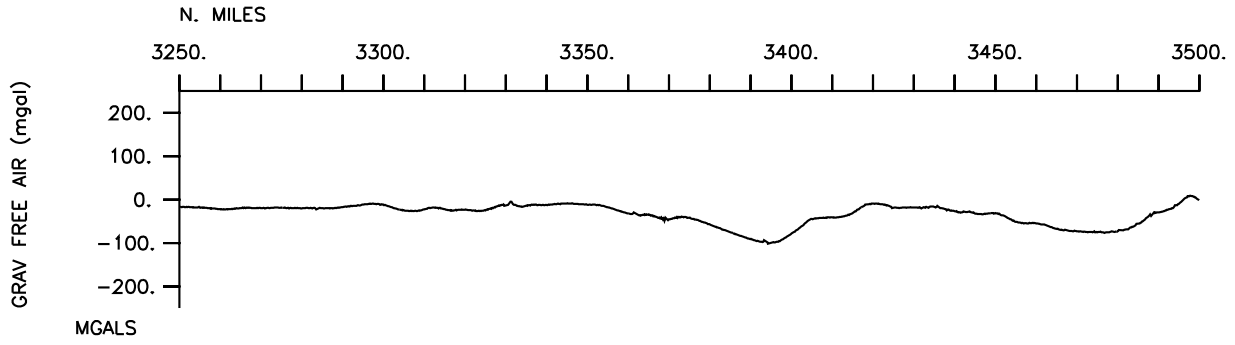


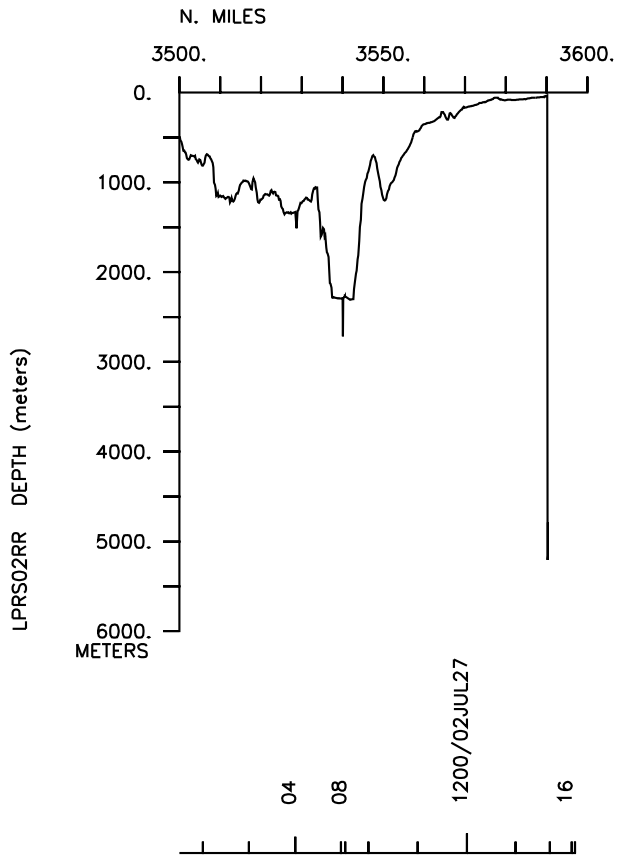
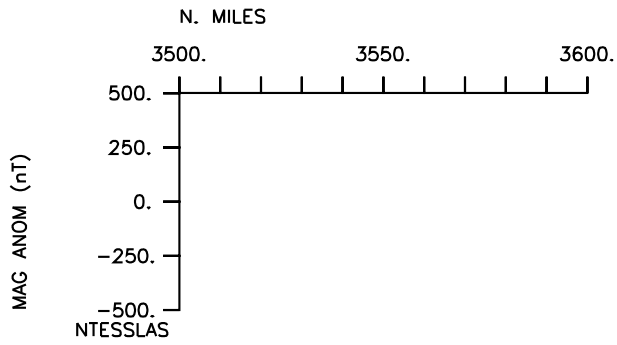
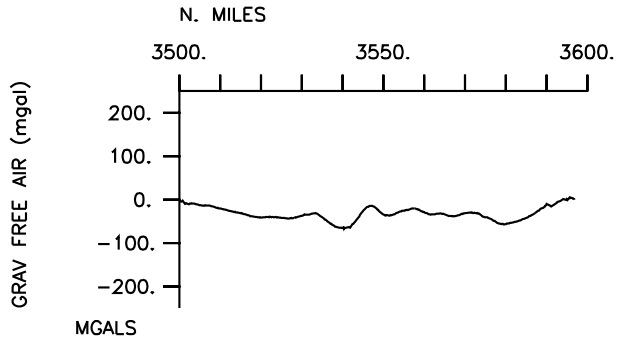












**** Ports ***

0013	270602	0	LGPT B	Newport, Oregon	44-37.55N	124-02.65W	g	LPRS02RR
1454	270702	0	LGPT E	Newport, Oregon	44-37.50N	124-02.05W	g	LPRS02RR
1546	280602	0	LGSS B	Newport, Oregon	44-36.99N	124-03.94W	g	LPRS02RR
2029	280602	0	LGSS E	Newport, Oregon	44-36.32N	124-05.64W	g	LPRS02RR
1400	080702	0	LGSS B	Bodega, California	38-17.99N	123-02.00W	g	LPRS02RR
1500	080702	0	LGSS E	Bodega, California	38-17.99N	123-02.00W	g	LPRS02RR

**** Personnel ***

#	*****NAME*****	*****TITLE*****	*****AFFILIATION*****	**CRID**
#---	----	-----	-----	-----
PECS OSU	Goldfinger, C.	Chief Scientist	Oregon State Univ.	LPRS02RR
PESP TAMU	Nelson, H.	Scientist	Texas A&M Univ.	LPRS02RR
PESP SIX	Charlet, F.	Scientist	U. of Ghent	LPRS02RR
PESP USGS	Crosby, C.	Scientist	U.S.Geol.Survey	LPRS02RR
PESP SIX	Gracia, E.	Scientist	Spain	LPRS02RR
PESP SIX	Karabanov, Z.	Scientist	U. of S. Carolina	LPRS02RR
PESP OSU	Lovelady, S.	Scientist	Oregon State Univ.	LPRS02RR
PESP SIX	Montes, S.	Scientist	Spain	LPRS02RR
PEST OSU	Oxford, J.	Scientist	Oregon State Univ.	LPRS02RR
PESP USGS	Stenner, H.	Scientist	U.S.Geol.Survey	LPRS02RR
PESP OSU	Kalk, P.	Technician	Oregon State Univ.	LPRS02RR
PESP OSU	Moser, C.	Technician	Oregon State Univ.	LPRS02RR
PEST SIX	Baranco, A.	Student	Spain	LPRS02RR
PEST OSU	Erickson, D.	Student	Oregon State Univ.	LPRS02RR
PEST OSU	Johnson, J.	Student	Oregon State Univ.	LPRS02RR
PEST OSU	Chaytor, J.	Student	Oregon State Univ.	LPRS02RR
PEST OSU	Etheredge, D.	Student	Oregon State Univ.	LPRS02RR
PEST OSU	Romsos, C.	Student	Oregon State Univ.	LPRS02RR
PEST OSU	Popham, C.	Student	Oregon State Univ.	LPRS02RR
PEST OSU	Pastor, J.	Student	Oregon State Univ.	LPRS02RR
PEST GBN	Schmid, S.	Student	U. of Liverpool,Eng.	LPRS02RR
PEST OSU	Robison, R.	Student	Oregon State Univ.	LPRS02RR
PEST SIX	Casas, D.	Student	Spain	LPRS02RR
PECT SCG	Foley, S.	Computer tech	Scripps Institution	LPRS02RR
PERT STS	Wilson, R.	Resident tech	Scripps Institution	LPRS02RR
PERT STS	Ravenhill, G.	Resident tech	Scripps Institution	LPRS02RR
PEST SIX	Pedrosa, M.	Student	Spain	LPRS02RR
PEST SIX	Garcia, D.	Student	Spain	LPRS02RR
PEST SIX	Perez, S.	Student	Spain	LPRS02RR
PEST SIX	Perez, J.	Student	Spain	LPRS02RR
PEST SIX	Falcon, H.	Student	Spain	LPRS02RR
PEST SIX	Marin, M.	Student	Spain	LPRS02RR
PEST SIX	Jiminez, S.	Student	Spain	LPRS02RR
PEST OSU	Rinterknecht, V.	Student	Oregon State Univ.	LPRS02RR
PEST SIX	Mas, M.	Student	Spain	LPRS02RR
PEST OSU	Hinrishson, B.	Student	Oregon State Univ.	LPRS02RR
PEST SIX	Turra, A.	Student	Spain	LPRS02RR
PEST SIX	Veaind, A.	Student	Spain	LPRS02RR
PEST SIX	Villalonga, R.	Student	Spain	LPRS02RR

**** NOTES ***

#An 'X' in the (B)egin/(E)nd column following the sample code indicates no #sample or data recovered. A 'C' indicates continuation of data collection #from before the beginning or after the end of a particular leg, (moored #bottom instruments, for example.) The number appearing in the columns #between the sample identifier and the disposition code, for many sample #entries, is the water depth in corrected meters.

#GMT	DDMMYY	SAMP	B	SAMPLE	DISP				p	CRUISE
#TIME	DATE	TZ	CODE	E IDENTIFIER	CODE	LATITUDE	LONGITUDE		c	LEG-SHIP
#-----	--	----	-	-----	----	-----	-----	-----	-	-----

**** Underway Data Curator - Shipboard Technical Support Group ext.41899 ****
 **** Digital Data Curator - Geological Data Center, S.P. Miller, ext.41898 ****

**** Log Books ****

0440	280602	0	LBSC	B OSU Core log	OSU	44-40.02N	125-17.06W	g	LPRS02RR
1355	270702	0	LBSC	E OSU Core log	OSU	44-36.14N	124-06.69W	g	LPRS02RR
1312	270602	0	LBSC	B OSU Way point log	OSU	44-39.79N	125-16.86W	g	LPRS02RR
1355	270702	0	LBSC	E OSU Way point log	OSU	44-36.14N	124-06.69W	g	LPRS02RR

**** MultiBeam Data (SIMRAD) ****

0139	270602	0	MBSI	B EM120 multibeam data	GDC	44-36.43N	124-21.73W	g	LPRS02RR
1355	270702	0	MBSI	E EM120 multibeam data	GDC	44-36.14N	124-06.69W	g	LPRS02RR

**** Echo Sounder Records ****

0139	270602	0	DPR3	B Knudsen 3.5kHz r-01	GDC	44-36.43N	124-21.73W	g	LPRS02RR
1355	270702	0	DPR3	E Knudsen 3.5kHz r-01	GDC	44-36.14N	124-06.69W	g	LPRS02RR

**** Digital Gravity ****

0030	270602	0	GVDD	B Digital gravity	GDC	44-36.79N	124-04.42W	g	LPRS02RR
1454	270702	0	GVDD	E Digital gravity	GDC	44-37.50N	124-02.05W	g	LPRS02RR

**** Integrated Meteorological Acquisition System ****

0030	270602	0	IMET	B weather measurements	GDC	44-36.79N	124-04.42W	g	LPRS02RR
1454	270702	0	IMET	E weather measurements	GDC	44-37.50N	124-02.05W	g	LPRS02RR

**** Acoustic Doppler Current Profiler ****

0030	270602	0	ADCP	B current measurements	GDC	44-36.79N	124-04.42W	g	LPRS02RR
1454	270702	0	ADCP	E current measurements	GDC	44-37.50N	124-02.05W	g	LPRS02RR

**** Kasten Cores ****

0440	280602	0	COKS	Kasten 01	2113M OSU	44-40.02N	125-17.06W	g	LPRS02RR
2048	290602	0	COKS	Kasten 03	3085M OSU	42-24.59N	125-11.99W	g	LPRS02RR
0126	030702	0	COKS	Kasten 04	3100M OSU	39-24.46N	124-56.41W	g	LPRS02RR
1747	070702	0	COKS	Kasten 15	3871M OSU	38-14.49N	124-40.23W	g	LPRS02RR
1309	100702	0	COKS	Kasten 21	3753M OSU	38-06.45N	124-14.32W	g	LPRS02RR
0908	140702	0	COKS	Kasten 29	4520M OSU	37-09.38N	126-27.40W	g	LPRS02RR
0225	150702	0	COKS	Kasten 32	4517M OSU	37-09.40N	126-27.52W	g	LPRS02RR
1050	220702	0	COKS	Kasten 46	4022M OSU	36-45.18N	124-14.70W	g	LPRS02RR
0320	230702	0	COKS	Kasten 47	3813M OSU	37-04.16N	124-02.53W	g	LPRS02RR
2205	230702	0	COKS	Kasten 50	3848M OSU	37-19.89N	124-05.01W	g	LPRS02RR
0540	240702	0	COKS	Kasten 51	3849M OSU	37-19.89N	124-05.01W	g	LPRS02RR
1407	240702	0	COKS	Kasten 52	3921M OSU	37-55.25N	124-29.87W	g	LPRS02RR
2055	250702	0	COKS	Kasten 53	3633M OSU	40-42.26N	125-46.69W	g	LPRS02RR
0716	260702	0	COKS	Kasten 54	3313M OSU	42-06.95N	125-46.47W	g	LPRS02RR
1213	260702	0	COKS	Kasten 55	3090M OSU	42-25.17N	125-13.12W	g	LPRS02RR

#GMT	DDMMYY	SAMP	B	SAMPLE	DISP				p	CRUISE
#TIME	DATE	TZ	CODE	E IDENTIFIER	CODE	LATITUDE	LONGITUDE		c	LEG-SHIP
#-----	---	---	---	-----	-----	-----	-----	-----	---	-----

#*** Piston Cores ***

0350	280602	0	COPS	Piston 02	2311M OSU	44-40.02N	125-17.06W	g	LPRS02RR
0745	010702	0	COPS	Piston 05	3473M OSU	39-42.45N	125-25.25W	g	LPRS02RR
0326	020702	0	COPS	Piston 06	3485M OSU	38-57.64N	124-39.21W	g	LPRS02RR
1707	020702	0	COPS	Piston 07	3022M OSU	39-24.39N	124-58.96W	g	LPRS02RR
0055	030702	0	COPS	Piston 08	3006M OSU	39-24.46N	124-56.41W	g	LPRS02RR
1137	050702	0	COPS	Piston 11	3316M OSU	38-49.86N	124-21.58W	g	LPRS02RR
2346	050702	0	COPS	Piston 12	3718M OSU	38-21.50N	124-18.51W	g	LPRS02RR
0815	060702	0	COPS	Piston 13	3636M OSU	38-23.21N	124-11.50W	g	LPRS02RR
1013	070702	0	COPS	Piston 14	3872M OSU	38-14.49N	124-40.23W	g	LPRS02RR
0007	080702	0	COPS	Piston 16	3941M OSU	38-07.11N	124-58.91W	g	LPRS02RR
0149	090702	0	COPS	Piston 17	3842M OSU	38-14.49N	124-40.23W	g	LPRS02RR
1246	090702	0	COPS	Piston 18	3605M OSU	38-15.06N	124-08.12W	g	LPRS02RR
2134	090702	0	COPS	Piston 19	3736M OSU	38-06.45N	124-14.38W	g	LPRS02RR
0519	100702	0	COPS	Piston 20	3739M OSU	38-06.45N	124-14.31W	g	LPRS02RR
2258	100702	0	COPS	Piston 22	4081M OSU	37-49.04N	124-49.72W	g	LPRS02RR
2237	110702	0	COPS	Piston 23	4181M OSU	37-39.01N	125-17.21W	g	LPRS02RR
2140	120702	0	COPS	Piston 26	4241M OSU	37-40.46N	125-25.63W	g	LPRS02RR
1537	140702	0	COPS	Piston 30	4507M OSU	37-09.41N	126-27.52W	g	LPRS02RR
2052	140702	0	COPS	Piston 31	4517M OSU	37-09.40N	126-27.52W	g	LPRS02RR
0119	160702	0	COPS	Piston 33	3924M OSU	37-55.25N	124-29.87W	g	LPRS02RR
1145	160702	0	COPS	Piston 34	3924M OSU	37-55.25N	124-29.87W	g	LPRS02RR
1321	170702	0	COPS	Piston 36	3851M OSU	37-19.89N	124-05.01W	g	LPRS02RR
1633	180702	0	COPS	Piston 38	4270M OSU	36-55.02N	124-48.69W	g	LPRS02RR
0008	220702	0	COPS	Piston 44	3839M OSU	36-40.16N	123-50.15W	g	LPRS02RR
0915	220702	0	COPS	Piston 45	4022M OSU	36-45.18N	124-14.70W	g	LPRS02RR
0920	230702	0	COPS	Piston 48	3813M OSU	37-04.16N	124-02.53W	g	LPRS02RR
1542	230702	0	COPS	Piston 49	3848M OSU	37-19.89N	124-05.01W	g	LPRS02RR

#*** Gravity Cores ***

0018	040702	0	COPG	Gravity 09	3496M OSU	38-53.93N	124-55.31W	g	LPRS02RR
0316	050702	0	COPG	Gravity 10	3455M OSU	38-54.13N	124-30.18W	g	LPRS02RR
0636	120702	0	COPG	Gravity 24	4242M OSU	37-40.46N	125-25.63W	g	LPRS02RR
1351	120702	0	COPG	Gravity 25	4230M OSU	37-40.47N	125-25.63W	g	LPRS02RR
1301	130702	0	COPG	Gravity 27	4505M OSU	37-09.40N	126-27.53W	g	LPRS02RR
0019	140702	0	COPG	Gravity 28	4535M OSU	37-08.47N	126-23.41W	g	LPRS02RR
0441	170702	0	COPG	Gravity 35	3851M OSU	37-19.89N	124-05.01W	g	LPRS02RR
2049	170702	0	COPG	Gravity 37	3854M OSU	37-08.01N	124-04.49W	g	LPRS02RR
0155	190702	0	COPG	Gravity 39	4272M OSU	36-49.39N	124-43.94W	g	LPRS02RR
1100	190702	0	COPG	Gravity 40	4288M OSU	36-49.09N	124-44.95W	g	LPRS02RR
0530	200702	0	COPG	Gravity 41	4450M OSU	36-26.90N	125-01.42W	g	LPRS02RR
1045	210702	0	COPG	Gravity 42	3840M OSU	36-42.42N	123-50.16W	g	LPRS02RR
1655	210702	0	COPG	Gravity 43	3837M OSU	36-39.25N	123-50.16W	g	LPRS02RR

#GMT	DDMMYY	SAMP	B	SAMPLE	DISP				p	CRUISE
#TIME	DATE	TZ	CODE	E IDENTIFIER	CODE	LATITUDE	LONGITUDE		c	LEG-SHIP
#-----	--	---	-	-----	----	-----	-----	-----	-	-----
#*** Expendable Bathythermographs ***										
0243	270602	0	BTXP	MK12 # 1	Fast_Deep	GDC	44-35.72N	124-38.79W	g	LPRS02RR
0537	270602	0	BTXP	MK12 # 2	Fast_Deep	GDC	44-43.96N	125-10.96W	g	LPRS02RR
1523	300602	0	BTXP	MK12 # 3	Fast_Deep	GDC	40-06.44N	125-58.27W	g	LPRS02RR
1547	010702	0	BTXP	MK12 # 4	Fast_Deep	GDC	38-57.85N	125-10.58W	g	LPRS02RR
1603	010702	0	BTXP	MK12 # 5	Fast_Deep	GDC	38-57.85N	125-06.84W	g	LPRS02RR
1943	010702	0	BTXP	MK12 # 6	Fast_Deep	GDC	38-53.46N	124-21.90W	g	LPRS02RR
0632	030702	0	BTXP	MK12 # 7	Fast_Deep	GDC	39-34.17N	125-03.51W	g	LPRS02RR
2110	040702	0	BTXP	MK12 # 8	Fast_Deep	GDC	38-47.91N	124-07.15W	g	LPRS02RR
1233	060702	0	BTXP	MK12 # 9	Fast_Deep	GDC	38-22.80N	124-13.90W	g	LPRS02RR
0424	080702	0	BTXP	MK12 # 10	Fast_Deep	GDC	38-04.60N	124-57.45W	g	LPRS02RR
0409	110702	0	BTXP	MK12 # 11	Fast_Deep	GDC	37-49.36N	124-50.77W	g	LPRS02RR
0140	130702	0	BTXP	MK12 # 12	Fast_Deep	GDC	37-40.12N	125-27.15W	g	LPRS02RR
0900	150702	0	BTXP	MK12 # 14	Fast_Deep	GDC	37-09.37N	126-22.22W	g	LPRS02RR
1714	160702	0	BTXP	MK12 # 15	Fast_Deep	GDC	37-50.55N	124-29.15W	g	LPRS02RR
1836	170702	0	BTXP	MK12 # 15	Fast_Deep	GDC	37-18.66N	124-04.90W	g	LPRS02RR
1742	190702	0	BTXP	MK12 # 16	Fast_Deep	GDC	36-46.40N	124-51.44W	g	LPRS02RR
2209	220702	0	BTXP	MK12 # 18	Fast_Deep	GDC	36-45.83N	124-20.81W	g	LPRS02RR
0145	250702	0	BTXP	MK12 # 18	Fast_Deep	GDC	38-23.94N	124-09.88W	g	LPRS02RR
2241	250702	0	BTXP	MK12 # 19	Fast_Deep	GDC	40-57.96N	125-58.56W	g	LPRS02RR
1918	260702	0	BTXP	MK12 # 20	Fast_Deep	GDC	42-56.25N	124-55.22W	g	LPRS02RR
#***										End Sample Index
										LPRS02RR