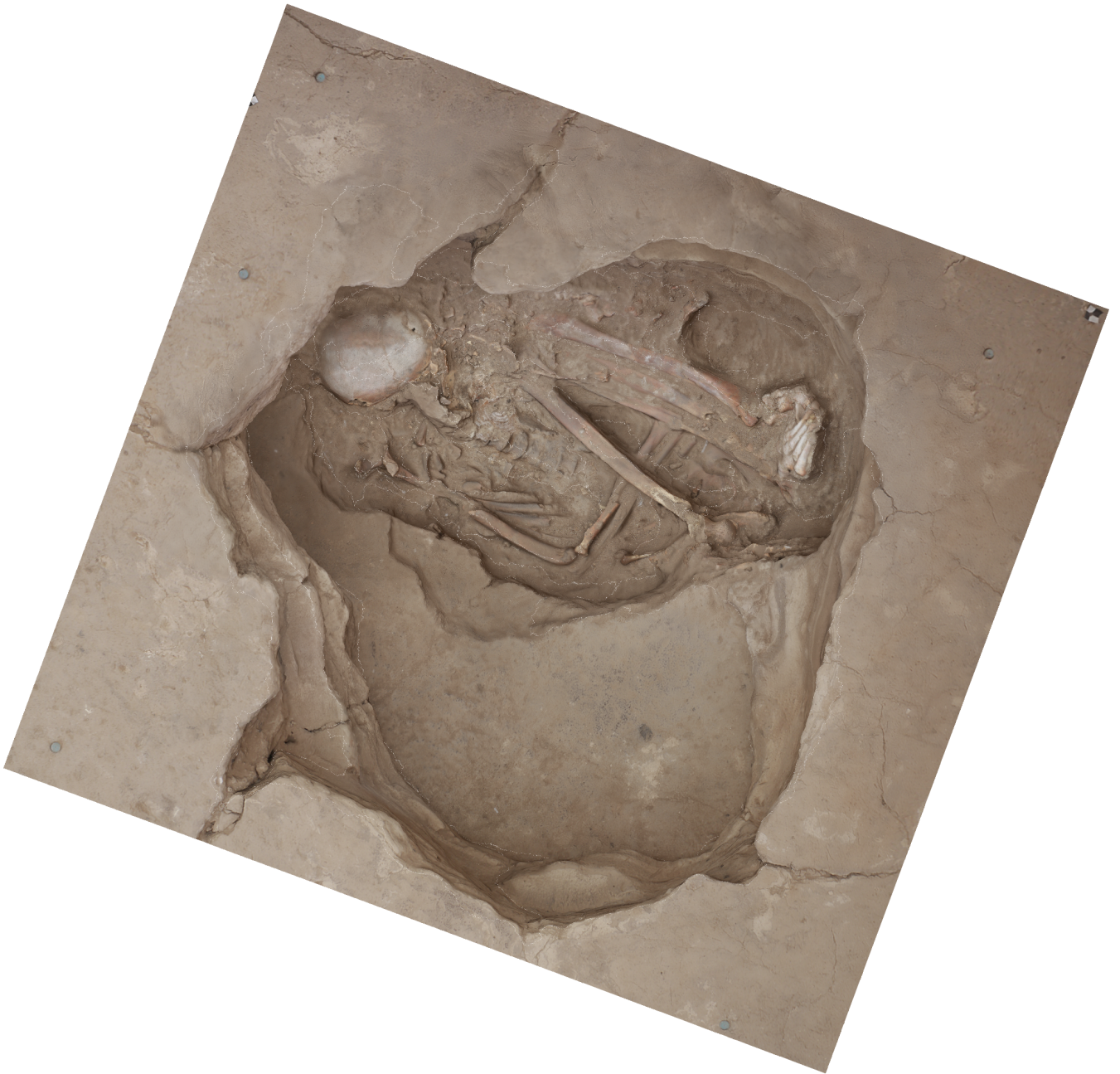


# Agisoft PhotoScan

Processing Report  
06 November 2014



# Survey Data

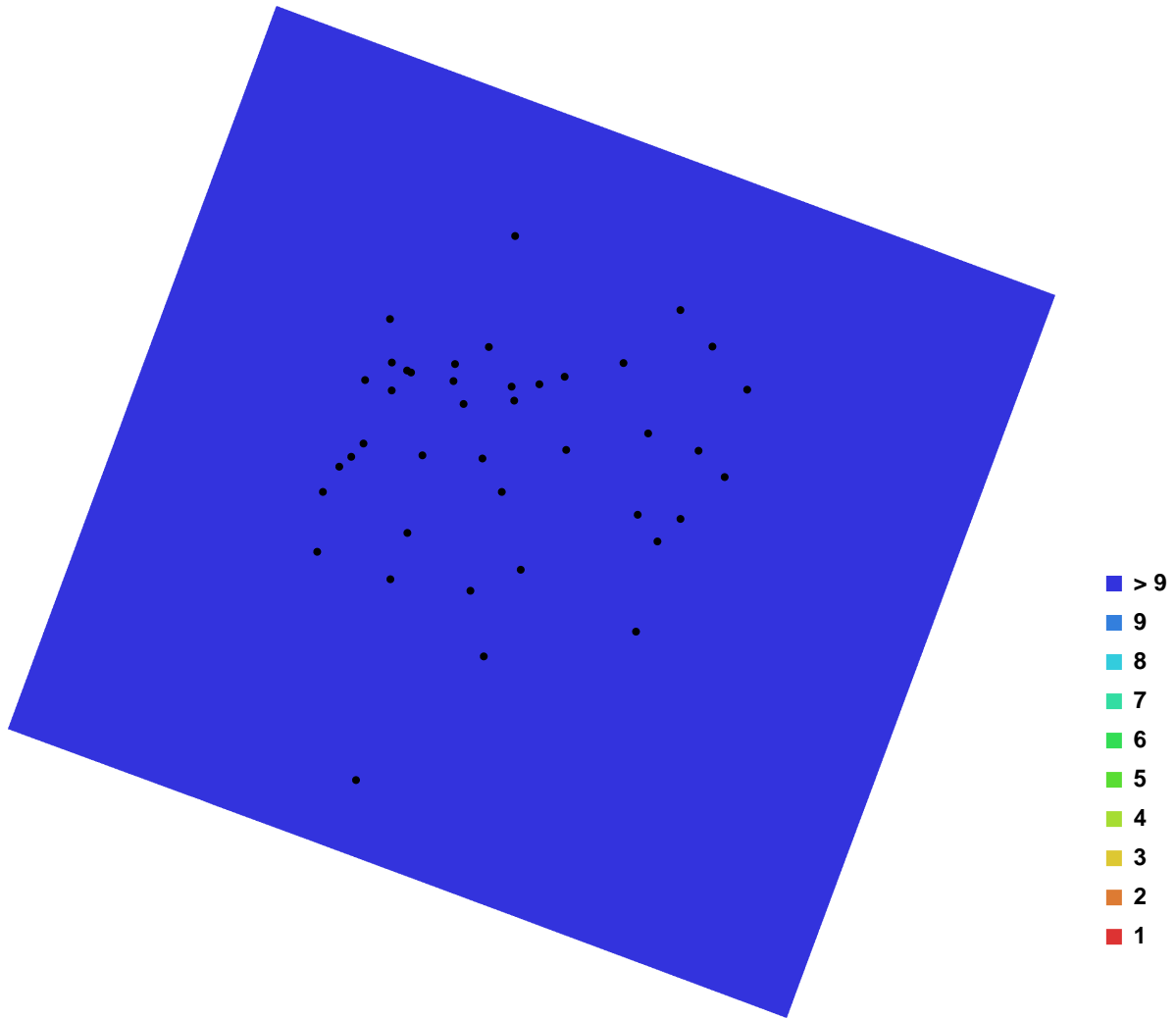


Fig. 1. Camera locations and image overlap.

Number of images:	55	Camera stations:	53
Flying altitude:	0.946357 m	Tie-points:	182289
Ground resolution:	0.000152392 m/pix	Projections:	526521
Coverage area:	1.36708e-006 sq km	Error:	1.12313 pix

Camera Model	Resolution	Focal Length	Pixel Size	Precalibrated
Canon EOS M (18 mm)	5184 x 3456	18 mm	4.384 x 4.384 um	No
Canon EOS M (20 mm)	5184 x 3456	20 mm	4.384 x 4.384 um	No

Table. 1. Cameras.

# Digital Elevation Model

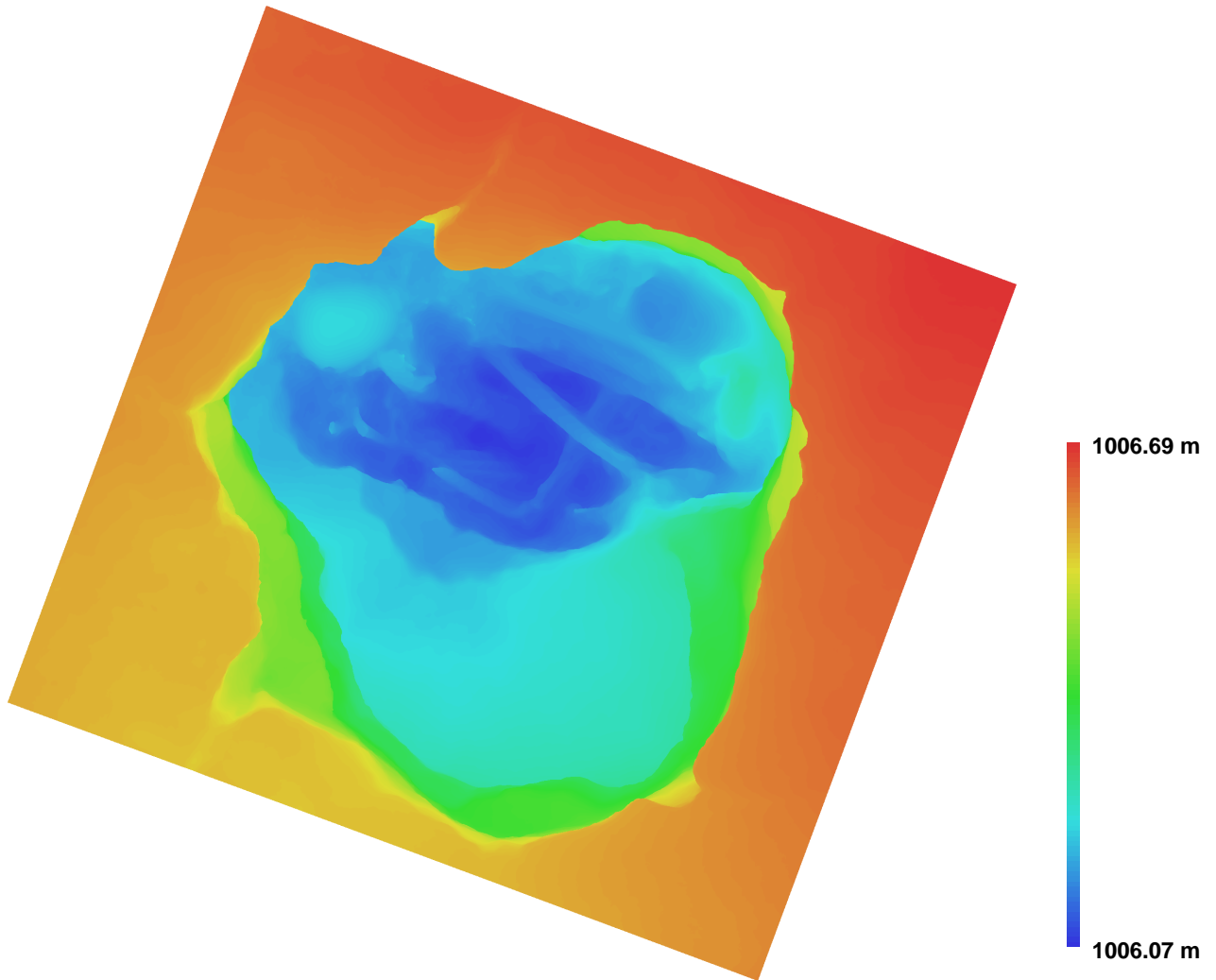


Fig. 2. Reconstructed digital elevation model.

Resolution: 0.000609568 m/pix  
Point density: 2.69126e+006 points per sq m