A large, detailed illustration of the Mexican flag, featuring vertical stripes of green, white, and red, with a central emblem of an eagle on a cactus. The flag is shown with folds and fringes.

SAN DIEGO SOUTHERN  
RAILWAY COMPANY

EXCURSIONS TO  
TIJUANA, MEXICO  
& SWEETWATER DAM.

I have over  
ordered  
at the  
Mexico.  
I old where one can  
see a Bull fight  
(Tijuana)



THE FIRST PLACE  
YOU SHOULD VISIT IS

# Barbour's

For there you will find just the box of candy you want. The dainty lunch to take with you, and returning—the refreshing soda or ice cream you will enjoy.

There is only one best

when you want any thing in the confectionery line, and that is —

## Barbour's

Corner Fifth and D Streets,  
San Diego, California.

(CA 1902) 1754 2085

## WHERE TO GO AND HOW TO GET THERE

**TIA JUANA.** Just across the line in Mexico, is visited by tens of thousands annually, via San Diego Southern Ry. Depot foot of Sixth street.

**SWEETWATER DAM,** Great work of masonry engineering, via San Diego Southern Ry. Depot foot of Sixth street.

**CHULA VISTA.** The Pasadena of San Diego. Heart of the great lemon belt. Large packing houses. Beautiful homes, eucalyptus and pepper avenues. San Diego Southern; Electric Car, Union Building, 3rd and D streets.

**TIA JUANA HOT SPRINGS.** Mud and Sulphur Baths, via San Diego Southern Railway. Depot, foot of Sixth street.

**CORONADO.** Just across the bay from San Diego, with its famous all-the-year-round Hotel del Coronado and noted **GENT CITY** which opens June 15 and closes in September. Electric cars and ferry. Cars leave 5th and D streets every twenty minutes.

**POINT LOMA PROMONTORY,** which extends between bay and ocean. Location of Fort Rosecrans; Wireless telegraph station; Lighthouse; Theosophical Headquarters and government coaling station. Take Coronado ferry car to Point Loma Ferry Dock, foot of H street.

**OCEAN BEACH.** On westerly slope of Point Loma. Rugged cliff formation. Reached by electric car, Union Building, 3rd and D streets. Hour and forty minute service.

**OLD TOWN.** Home of Ramona; Old Mission Bells and historic church and ruins of Fort Stockton. Winder street car, 3rd and D streets.

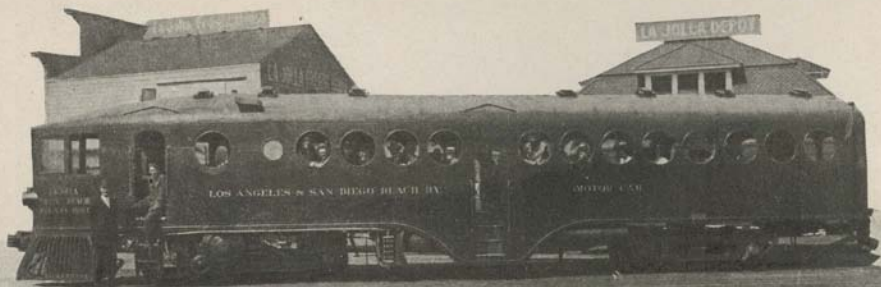
**MISSION, SAN DIEGO.** Founded July 16th 1769. Reached by electric car and tally ho.

**CORONADO ISLANDS.** Off the coast of Mexico, for fishing trip. Take Coronado Ferry car to McKinley Boat House, foot of H street.

**LA JOLLA.** The place of caves and beautiful scenery, via L. A. & S. D. B. Ry. Ticket Office 4th and C streets.

**LAKESIDE INN and IDEAL HEALTH RESORT.** Via San Diego and Cuyamaca Ry. Depot foot of 10th street. Ticket Office — Balloon Route Excursion—1340 D street.

While Sight-seeing in San Diego  
**REMEMBER!!!** no other place like LA JOLLA  
CAVES-CLIFFS-ROCKS-MARINE GARDENS-GOLD FISH-BATHING



The elegant LA JOLLA LINE GASOLINE MOTOR CARS run daily between Brewster Hotel 4th & C Sts. San Diego, and La Jolla. Steam trains run from foot of C street.

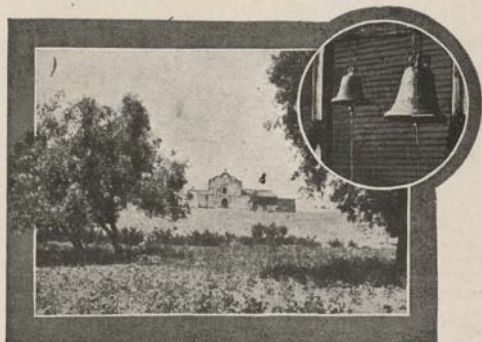
## A BIT OF SAN DIEGO HISTORY

Fifty years after the discovery of America by Columbus, there dropped anchor in the land locked harbor, now called San Diego Bay, two ships flying the Spanish flag, under the command of a Portuguese navigator named Cabrillo.

He called the port San Miguel (St Michael), and under this name it went for fifty-nine years, until 1601, when Sebastiano Viscaino, an explorer from Mexico, sailed into the harbor and re-named it San Diego, (St. James). From the time of Viscaino's visit, nothing further is mentioned in history up to the arrival of the Mission Fathers under Juniperra Serra, in 1769. They built the first Mission, the ruins of which now stand about three miles up the valley from what is called Old Town.

During the Mexican War, San Diego was captured and recaptured by the opposing forces, and finally captured by Commodore Stockton, with his fleet and land forces. The most sanguinary engagement in California during the war, was fought in San Diego County. This was the battle of San Pasqual, where many were killed and wounded. From the end of the Mexican war in 1848, until 1867, the history of San Diego was uneventful. At this time the man who was to make San Diego's permanent history, came in the person of Alonzo Horton, (recently deceased at the age of 95). During his forty-two years of life in San Diego, he saw the infant town develop into a city of commercial and municipal importance. San Diego, once a barren waste, is today a busy, thriving city of nearly 50,000 inhabitants.

The Old  
Mission Bells  
San Diego

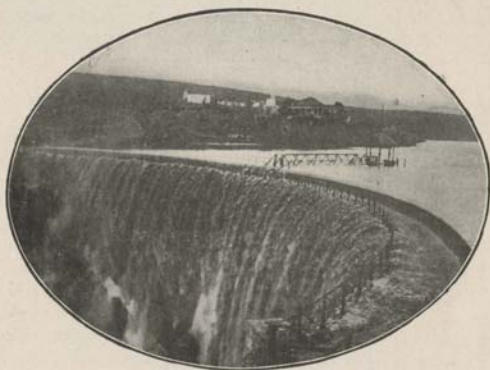


## OLD MEXICO AND SWEETWATER DAM



N E should never leave San Diego without visiting Old Mexico. The *SAN DIEGO SOUTHERN RAILWAY CO.*, runs personally conducted excursion to Tia Juana, Mexico; leaving depot, foot of Sixth street, San Diego, at 9:18 a. m., daily. Traversing the shore line of the bay, entering National City by a broad avenue of majestic eucalyptus trees of many species. ¶ As the cars wind along, one commands a grand view of the mountains, bay, ocean, Corpus Christi Islands of Mexico, Point Loma, and Coronado with its magnificent hotel in the distance. ¶ In National City will be seen the only citric acid plant on the Pacific Coast; manufacturing acids, oils, extracts and syrups from lemons, oranges and grape fruit. This plant consumes twenty tons of fruit daily. ¶ Adjoining National City is Olivewood, with the oldest olive grove in the state, the trees being of immense size and noted for their production of fine olives. ¶ The Terrace is the next place of interest, its summit dotted with a cluster of palatial homes overlooking the fertile valley of the Sweetwater. ¶ You are now headed for Chula Vista (Enchanting View). This spot Nature has blessed with all the charms of which she is capable, to make it worthy of its name. The mountains for a background, the rolling mesa in the distance, a vista of fields and orchards, the bay and the blue Pacific in the foreground, all combine to make Chula Vista a place never to be forgotten. While in this locality, you ride for miles with beautiful orchards on both sides of the tract, here and there a fine residence approached by paths marked with hedges of roses, geraniums and calla lilies which bloom in profusion the year round. From this point a birds-eye view will be obtained of the entire country traversed. ¶ Journeying on over rolling mesas, through valleys, expansive and fertile, passing the towns of Otay and Nestor, on down the valley of the Tia Juana river to the noted Monument, the dividing line between the United States and Mexico. There you are transferred by a comfortable stage to the old town of Tia Juana, Mexico, where ample time is given to visit the Curio Stores where one can purchase fine Indian

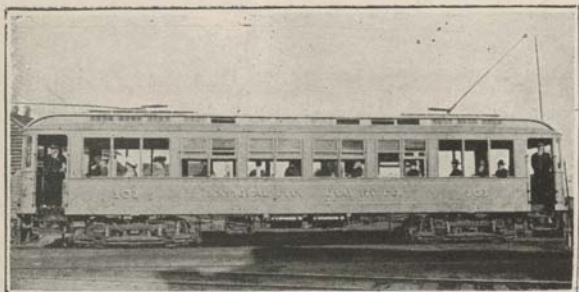
pottery, blankets, drawn work, Mexican cigars etc. ¶ Any one wishing a genuine Spanish dinner, can procure same at the Spanish restaurants. ¶ The Excursion Agent conducts you to the Mexican Custom House, where handkerchiefs can be stamped with the Mexican Coat of Arms, free of charge; then to the adobe church, historic jail and arena, where the famous bull fights are held. Returning to the train, time is given to visit the granite Monument which marks the boundary line. At this point one can see many miles into Mexico. Table Mountain in the distance, guard house of the Rurales, and the fertile valley of Tia Juana.



SWEETWATER DAM BUILT NOV. 17, 1886. COMPLETED APRIL 7, 1888.  
WALL 500 FT. LONG; 100 FT. HIGH; 47 FT. THICK AT BASE, 12 FT. AT  
TOP; CAPACITY, EIGHT BILLION GALLONS.

Boarding the train, you return to National City, the transferring point for Sweetwater Dam. Lunch can be had at this point and those wishing to visit the great Sweetwater Dam, can do so without extra charge, returning to San Diego at 3:52 p.m. Those not wishing to take this side trip, arrive at San Diego at 1:17 p. m., connecting with special electric car for the north bound Santa Fe train. ¶ Remember; this line offers the tourist the only means of leaving the city at 9:18 a. m., seeing all the sights of Tia Juana and returning at 1:17 p. m., leaving the afternoon to visit other places of interest.

*Fare for the round trip, including stage to old Mexico and side trip to Sweetwater Dam—\$1.00.*



## See this Big Electric Car?

Well, it will convey all the Mr. and Mrs, Tourists and all the little Tourists, ten miles without change, into the beautiful country; through National City, with its wonderful avenues, of graceful peppers, lovely date palms and tall majestic eucalyptus trees; the olive country, with the oldest olive grove in Southern California. and finally into Chula Vista, the lemon belt of America, which has the largest lemon grove in the U. S. A.

Observation cars leave the corner of Third and D streets, every 45 minutes (See Time Table below). Passengers wishing to visit groves and packing houses will be given ample time for same. Returning cars leave the terminus station at Chula Vista, every hour and a half for San Diego.

Fare for the round trip, 30 cents.

Ticket Office, Union Building, 3rd and D streets.

---

### TIME TABLE SAN DIEGO SOUTHERN RAILWAY CO. Electric Division

**CARS LEAVE FOOT of D STREET FOR:—**


**NATIONAL CITY**—6:40-7:25-8:10-8:55-9:40-10:25-11:10

11:55 *A. M.* 12:40-1:25-2:10-2:55

3:40-4:25-5:15-6:00-6:40-8:10-9:30-11:25 *P. M.*

**CHULA VISTA**—6:40-7:25-8:55-10:25-11:55 *A. M.*

1:25-2:55-4:25-5:15-6:00-9:30-11:25 *P. M.*

 Passengers leaving articles on cars of the **SAN DIEGO ELECTRIC Ry. Co.**, inquire at "Barbours" 5th & D streets.



A CHULA VISTA HOME

IN taking that most delightful ride on the big electric cars from foot of D street, San Diego, through National City to Chula Vista, or steam cars from foot of Fifth street, through National City to Sweetwater Dam, you have a charming view of San Diego Bay, with Coronado and Point Loma in the distance on one side, mountains and valleys with intervening landscape on the other. En route, you pass through hundreds of acres belonging to the San Diego Land Co., some of which is rich bottom land, suitable for raising alfalfa, small fruits, garden truck etc. On the uplands are beautiful orchards, mostly lemons.

Chula vista, styled "Crescent City of the Silver Gate," is the star residential suburb of San Diego. This is not only the finest lemon section of Southern California, but a place of beautiful homes, with clear sparkling water delivered under heavy pressure through iron pipes to every tract, from our Sweetwater System. Our holdings in San Diego, National City, Chula Vista and Sweetwater Valley, comprise over 30,000 acres from which to select anything from a city lot to acreage for any purpose. Some of the high plateaus command scenic views, both mountain and marine, which are unsurpassed. We have several miles of bay frontage for industrial purposes.

**SAN DIEGO LAND COMPANY.**

307-308 Union Building,

San Diego, California.

# RAILROAD & STEAMSHIP TIME TABLES

## ATCHISON, TOPEKA & SANTA FE

(Depot foot of D street)  
Leave San Diego—8.35 a. m., 2.05, and  
11.55 p. m.

Arrive " " —1.10, 6.25 p. m. 7 a. m.  
Leave Los Angeles—8.45 a. m., 2.05,  
11.55 p. m.  
Arrive " " —1.00, 6.35 p. m.,  
6.55 a. m.

## SAN DIEGO SOUTHERN

### Steam Division

(Depot foot of 6th street)  
Lv. San Diego—9.18 a. m., 1.38, 4.08 p. m.  
Lv. National City—\*7.10, 9.40 a. m. 2.00  
4.30 p. m.

Ar. Tia Juana—\*7.50, 10.20 a. m., 5.08  
p. m.

Lv. " " —\*7.56, a. m., 12.16, 5.15  
p. m.

Ar. Sweetwater Dam—2.31 p. m.

Lv. " " —2.59 p. m.

Ar. National City—8.35 a. m., 12.55, 3.30  
5.53 p. m.

Ar. San Diego—8.57 a. m., 1.17, 3.52 p. m.

*\*Daily except Sunday*

## LOS ANGELES & SAN DIEGO BEACH RY.

(Depot foot of C street)

For current time tables and information,  
call at our offices 4th and C streets  
under Brewster Hotel and depot, foot  
of C street, or telephone or see time  
table in Daily Papers

## LOWER CALIFORNIA DEVELOP- MENT CO.

Ticket Office, Keating Blk., 5th & F  
For Ensenada, Mexico.

Leaves; 1st, 10th, 20th.

Arrives; 4th, 13th, 23rd.

## THE MCKINLEY BOAT AND FERRY COMPANY

(Wharf foot of H street)

### SOUTH SAN DIEGO

Lv. San Diego, 9.20 a. m., 1.00, 5.20 p. m. Lv. So. San Diego, 7.00, 11.00 a. m., 3.40 p. m.

### CORONADO ISLANDS

Saturday and Sunday Mornings at 9:00

## SAN DIEGO & CUYAMACA RY.

(Depot foot of 10th street)

### Steam Trains

Lv. San Diego—Daily, Except Satur-  
days and Sundays—7.25, 8.45 a. m.; 1.10  
5.15 p. m. Saturdays—7.25, 8.45 a. m.;  
1.10, 5.00, 11.15 p. m. Sundays—9.25  
a. m.; 5.15 p. m.

Way Stations—Encanto, Lemon Grove  
La Mesa, El Cajon, Santee, Lakeside.

Ar. at Foster—Daily except Saturdays  
and Sundays—9.45, 9.52 a. m.; 2.32, 6.23  
p. m. Saturdays—9.45, 9.52 a. m.; 2.32,  
6.07 p. m.; 12.25 p. m. Sundays—10.35,  
a. m.; 6.23 p. m.

## PACIFIC COAST S. S. CO.

(Wharf foot of 5th street)

*See opposite page*

J. DON DUNANN, Ticket Agent.

## SALT LAKE ROUTE

San Diego, Lv. 11.55 P. M.

Los Angeles, Lv. 10.00 A. M.

Chicago, Ar. 11.55 A. M. 4th day

C. C. JEWETT, C. P. & T. Agt.

## SOUTHERN PACIFIC RY.

Ticket Office, 5th and E streets

San Diego, Lv. 8.35 A. M.

New Orleans, Ar. 6.45 P. M., 3rd day.

New York, 12.30 M., 5th day.

J. R. DOWNS, Com. Agt.

## Point Loma and Roseville Ferry

(Wharf foot of H street)

Ticket Office—Balloon Route Excursion  
1340 D street.

Lv. 7.00, 9.00, 10.00 a. m.; 2.00, 4.20,  
5.40 p. m.

"FASTER THAN EVER BEFORE"

ON BIG NEW STEAMSHIPS



LEAVE SAN DIEGO

*For Los Angeles, San Francisco,  
Seattle and Puget Sound Ports*

PRESIDENT or GOVERNOR — WEDNESDAYS 10. P. M.

---

*For Los Angeles, Santa Barbara  
San Francisco*

SANTA ROSA — SATURDAYS 10. P. M.

*connecting at San Francisco with Company's  
Steamers for Victoria, Seattle, Puget Sound  
Ports and Mexico; and at Seattle for Ketch-  
ikan, Wrangel, Juneau, Skagway, Sitka,  
St. Michael, Nome.*

*Right reserved to change Schedule*

THROUGH TICKETS SOLD AT LOWEST RATES  
*Including BERTH and Meals*

SAN DIEGO TICKET OFFICES

3rd and D Streets

Wharf—Foot of Fifth Street

J. DON DUNANN, City Passenger Agent

## SAN DIEGO BAY EXCURSION



This popular trip will give one a magnificent marine view. Leaving the McKinley wharf, foot of H street, daily at 9:20 a m. one can take an eighteen mile bay ride for 25 cents, passing National City, Chula Vista, on to South San Diego, returning home at 12.20. A stop-over is allowed to return later in the evening.

### EXCURSIONS TO CORONADO ISLANDS, MEXICO

A ride of fifty miles on bay and ocean, long to be remembered. This excursion leaves every Saturday and Sunday at 9 a. m., on the Steamer McKinley, Gliding through the smooth waters of the bay, passing Roseville, La Playa, Government Quarantine, Coaling Station, Fort and Jetty out to the open sea. Those wishing to fish are supplied with tackle. The sport is keen until the islands are reached. Landing on the islands, two hours are given to gather shells, sea mosses; view the marine gardens and seal rookeries. This delightful excursion is well worth the price—one dollar for the trip. Capt. L. B. Rhodimer, who is in charge, is a reliable and experienced navigator. Parties wishing to charter boats, large or small, can make arrangements at the boat house. Go and see them; visitors are always welcome. Take Ferry car for McKinley boat house, foot of H street.

*All sailing dates subject to change without notice. Phone Sunset, 2117.*

## SCENIC VIEW PLACES IN THE CITY

*LOOKOUT POINT, CITY PARK.* Best general view of the city, bay, Coronado, ocean, Point Loma and mountains. Take Pavilion car from 5th and D streets.

*OSTRICH FARM and SILK MUSEUM.* Take Pavilion car from 5th and D streets.

*MISSION CLIFF PARK.* Terraced Gardens overlooking Mission Valley. Pavilion car leaves corner 5th and D streets every ten minutes for the park.

*CITY HEIGHTS.* Suburban resident section; an interesting car ride. Take Pavilion car at 5th and D streets, transfer to City Heights.

*UNIVERSITY and NORMAL HEIGHTS.* Pavilion car 5th street, transfer to Adams Ave., line.

*GOLDEN HILL.* Terminus of the D street car line.

*FLORENCE HEIGHTS.* Third street cars from Union Bldg., 3rd and D streets. Some of the city's finest residences will be seen on the way to the scenic points on this line.

---

## Diamond Carriage and Livery Co.

and

## San Diego Transfer Co.

Office 4th and C streets  
Stable 2nd and D streets

Hacks—Tally Ho's—Livery of all  
description and Transfer wagons

Sunset 171

PHONES

Home 1171



## A COZY CORNER TABLE

In this restaurant is just the spot to finish up the day's visit to Tia Juana. Stop in and have a little snack or a good dinner as you prefer. When finished, you will remember the time spent here as the most enjoyable feature of your day's pleasure. Try it and prove it.

## Rudder's Cafe Union

### The Handsomest Restaurant in Southern California

Music during Lunch and Dinner. Beer, Wine  
or Ale served with meals.

BASEMENT UNION BUILDING  
3rd and D Streets

SAN DIEGO  
CALIFORNIA

**THE FIRST NATIONAL BANK**  
**OF SAN DIEGO, CALIFORNIA**  
**UNITED STATES DEPOSITARY**  
**CAPITAL \$150,000.00**  
**SURPLUS AND UNDIVIDED PROFITS**  
**\$200,000.00**

**CORRESPONDENTS**

**NEW YORK**  
NATIONAL PARK BANK

**CHICAGO**  
COMMERCIAL NATIONAL BANK

**KANSAS CITY**  
FIRST NATIONAL BANK

**SAINT LOUIS**  
THIRD NATIONAL BANK

**SAN FRANCISCO**  
FIRST NATIONAL BANK

# Agnew Sanitarium

Fifth and Beach streets, San Diego, California

This institution is thoroughly modern in construction and equipment, conducted as a Medical and Surgical Sanitarium, with complete maternit and rest-cure departments, and is open to all reputable physicians.

The Agnew Sanitarium (Incorporated)  
W. L. ROHRER, Secretary & Manager

---

E. E. GIBBS

TOURISTS' DINING PARLOR  
FOR FIRST-CLASS DINNERS

COR. 23RD & 7TH AVE. NATIONAL CITY, CAL.

---

## Tia Juana Stage Line

Meets Train Leaving San Diego

DAILY—9:18 A. M.

FARE 25 CENTS

# The Manhattan Restaurant

Located right in the heart of  
the City where all cars meet

**OPEN DAY and NIGHT**

A. AMMON, PROPRIETOR

Choice Steaks, Chops, and Oysters at all hours.  
Wine and Beer served with meals. Regular dinner  
from 11 a. m. to 8 p. m. **OPEN ALL NIGHT**

**White help only employed. Prompt service**

Home, 1223

PHONES

Sunset, 623

D Street, near 5th

San Diego, Calif.

---

## When in Tia Juana

VISIT

### THE INSIDE INN

Hotel and Grill—Cafe in connection

### CHICKEN RIGHTS

The Great Mexican Sport, every  
SATURDAY and SUNDAY

A. RUSSEL, Prop.

Tia Juana, Mexico



The LARGEST Assortment of  
Mexican Curios  
Indian Baskets and Blankets  
California Souvenirs  
Native Gem Stones

## Burnell's Curiosity Store

Established 1887

1415-17 F St. Bet. 5th & 6th

Makers of Hand Carved and Art Leather Goods  
Wholesale and Retail

---

# HOTEL NACIONAL

## TIA JUANA, MEXICO

A first class American or  
Spanish Meal or Lunches.  
All kinds of drinks. ☾ The  
BEST place to eat while in  
Mexico. ☸ ☸ ☸ ☸ ☸ ☸

JOSE G. PADILLA, PROPRIETOR

MEALS AT ALL HOURS

SATISFACTION GUARANTEED

## Maison Doree Restaurant

Claude Le Carboulee, Prop.

GOOD MEXICAN, FRENCH  
AND AMERICAN DINNERS

ALSO NEW  
FURNISHED ROOMS

TIA JUANA, MEXICO

---

## HOTEL SAN MIGUEL DINING ROOM

NEAR DEPOT

NATIONAL CITY

JOS. CLAVERT, CHEF AND MANAGER

PHONE: SUNSET-NATIONAL 332

---

## THE BIG STORE ON THE CORNER

Don't forget to visit the Second Store—second in location, but first in assortment; the place where you get a dollar's worth for a DOLLAR

CIGARS, POSTAL CARDS, DRAWN WORK, SARAPES, FILIGREE JEWELRY, MEXICAN AND INDIAN POTTERY AND OTHER CURIOS

JORGE IBS,

TIAJUANA, MEXICO



INTERIOR OF BAZAAR MEXICANO. TIJUANA MEXICO

## BAZAAR MEXICANO

TIJUANA  
MEXICO

### DEPOSITORY OF

### MEXICAN SOUVENIRS—FILIGREE WORK—DRAWN WORK

Genuine Panama Hats, Fine Mexican Cigars and Cigarettes, Souvenir Spoons,  
Mexican Carved Leather Goods, Pottery, Indian and Mexican Art Goods, Serapes  
Specialty of Japanese Art Goods, Pongee Silks, Laces and Embroidery

LOWEST PRICES

Alexander Savin

## HOT SPRINGS


### TIA JUANA, MEXICO

ALBERT ARGUELLO, PROPRIETOR

**RATES**— INCLUDING EVERYTHING — **\$10. PER WEEK**

MUD BATHS FOR LADIES AND GENTLEMEN

**WATER 13% MINERAL**

Three miles from depot.  Trains  
leave San Diego, Daily, 9:18 A. M.

Established 1900

# LOUIS SCHLESINGER

CLOTHING and HATS  
GENTS' FURNISHING GOODS

SUITS MADE TO ORDER—CLEANING,  
DYEING AND REPAIRING

1328 F St.,      Keating Bldg.      San Diego, Cal.  
Home Phone 2191

---

*Cuartos  
Amueblados*

*Cantina*

*Furnished  
Rooms*

## THE CLUB

*All kinds of*

MEXICAN and AMERICAN LICORES  
MEXICAN CIGARS, CARTA BLANCA

MEXICAN BEER

*Jose R. Alvarez,  
Proprietor*

TIJUANA  
B. C., MEXICO

SPEC  
PAGE  
868  
-915  
5278  
1902

## THE OSTRICH FARM A SIGHT BY ITSELF



GENERAL  
LOGAN

TAKE Pavilion car which leaves the corner of 5th and D street every 10 minutes, for the *BENTLEY OSTRICH FARM*, established 1883. Here one will gaze upon 125 magnificent birds, presenting an imposing sight. To interest the callers, a courteous guide will accompany parties about the ranch, giving a lecture on the birds, their raising and habits. The exhibit rooms display thousands of dollars worth of feathered art, manufactured into plumes, boas, tips etc., the choice of same can be purchased at producers prices. This farm is one of the finest in Southern California, and should be visited by all.

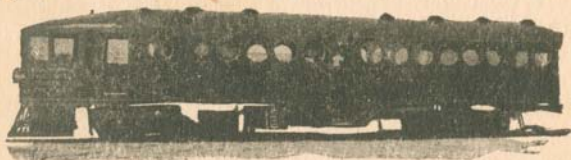
When in Oakland Calif., don't fail to visit the branch farm of this; "the original ostrich farm of America". "*BENTLEY OSTRICH FARM*", San Diego, Cal.

W. H. BENTLEY, Pres.

# SAN DIEGO AND CUYAMACA RY.

direct line to

LAKE SIDE INN  
and all mountain resorts



Special Motor Car Excursions  
through beautiful

## EL CAJON VALLEY

For further information, enquire of E. W.  
BOUR, Excursion Agent, 1314 E St., or at  
GENERAL OFFICE, TENTH and N STS.

E. A. HORNBECK,  
General Manager

