

ORGANIZATIONAL STRUCTURE OF EL PARTIDO NACIONAL LA RAZA UNIDA

INTRODUCTION

As a Revolutionary Chicano Mexicano Party, La Raza Unida needs a two level organization. We must be able to deal with the numerous community issues and simultaneously work on our political and ideological commitment. Recognizing the need for this type of organization, different organizational models were investigated. With this in mind, the National Congreso met in 1982 in order to mobilize a structure that would permit the Partido to function as both a close and open organism. This document is another step towards building such an organization.

Questions may arise over the need for a two level organization rather than an organization that allows open participation. Such questions are put to rest when our movement, goals, and strategies for accomplishing those goals are understood. We are in struggle for national liberation - our goal is liberation. Thus, it stands to reason that we need an organization that is capable of sustaining our movement through that struggle.

The Black Liberation Movement of the 60's, the Native American Struggle, and the Chicano Power Movement of the late 60's and early 70's and their respective downfalls are clear examples of the type of reaction we can expect from the powers that be. We can not expect our oppressor to give us our liberty. We must demand it and struggle for it. During the late 60's, the state focused their force on the Chicano Power Movement. In the state's efforts to destroy our Movement, organizers were jailed, some died under mysterious conditions, and we were infiltrated with provocatures and undercover police. By the early 70's, our organization was virtually eliminated. Our organizational structure allowed the state easy access to our leaders, and thus, facilitated their mission to eliminate them.

The Partido has transcended three periods. The action-reaction period, known as the Chicano Power period of 1965-1975 was the first. The period of reflection (1975-1983) followed. It was a period of analysis when we utilized the lessons learned from the Chicano Power period to help us understand the type of movement we were and what type of an organization we needed. The last period was one of ideological solidification. During this period, 1983 to the present, we consolidated our Party and developed our own ideological direction: Revolutionary Nationalism. Revolutionary Nationalism is based on our history and struggle. It utilizes Scientific Socialism as our method of interpreting our political, social and economic situation.

Through this transition, we have also realized that an issue oriented organization is only as effective as the duration of the issue. This is not to say that issues aren't important, but that issues don't build organizations. If issue oriented organizations

don't build movements, the alternative is a goal oriented organization. Our goal is national liberation. It is important to define what type of organization we are because it will determine what kind of organizers we will attract to the Partido.

As a colonized people, we have been conditioned to view our lives in short ranged goals, simply seeking instant gratification from an individualistic point of view. Typical of colonized people, we have left the "thinking" to the master. Even in our movement we had left the thinking, the ideological development, to the Anglo Left. If, in fact, we are serious about our commitment, we must accept the responsibility of organizing our movement and working toward self-determination.

Since the formation of the Partido in the early 1970's, a debate existed within the organization that demonstrated the contradictions between an issue oriented organization and a goal oriented one. The contradictions also revolved around the question of whether we were a mass or revolutionary organization. We had not been able to take a firm position on what type of organization we were partly due to the lack of clarity as to what constituted an issue or a goal oriented organization. At this time, the Left was also very present in the Movement in general, but particularly in the Partido. They, (the Left) ensured that the Partido did not see itself with the ability to develop its own ideological line that would in turn clarify that a revolutionary party could also be a mass party. This struggle has continued to the present. Today we are still confronted with honest and sincere Chicanos Mexicanos that don't understand the necessity for this type of organization. As previously stated, the answer to this question is clear. It revolves around understanding the question itself: What kind of Movement are we? Who is the oppressor, the entity that we struggle against? It must be clear that we are an internal colony, struggling for national liberation and our enemy is the imperialist capitalist system. Only when we understand the questions, will we be able to understand the need for a revolutionary goal oriented organization.

INTERNAL

NATIONAL ASSEMBLY

This is the highest decision making body of the Partido. It is open to all credential Partido activists and invited guests. Party business is conducted and Central Committee members, as well as national officers are elected at the National Assembly.

CENTRAL COMMITTEE

This is the highest decision making body between National Assemblies. The Central Committee carries out the resolutions of the National Assemblies and internal Partido work. The Central Committee

also elects all Commission heads: political, popular action, workers, youth, cultural, and La Mujer. The Central Committee may also elect the National and International Secretary in between National Assemblies. In addition, the Study Class Circle is the Central Committee's responsibility.

EXTERNAL

STUDY CLASS CIRCLE

The Study Class Circle is the first component of the Partido to be completely external. Its purpose is to educate, politicize, and conscientize. The organization initiates a life long process of political and ideological education through the Study Class Circle. It is the Partido's position that we should never stop learning and investigating. The Study Class Circle is directly responsible to the Central Committee or an appointed Partido activist.

COMMISSION ON COMMUNITY ACTION

The Commission on Community Action is responsible for community action direction such as August 29th, The Youth Committee, and other approved projects. Basically, the Commission guides our popular activities, ensuring that we do not get involved in activities that will not benefit our Party or people. All activities must fall under the principles and documents of the Partido. Through this commission, our organization is open to other groups and individuals. This allows us the opportunity to bring people in to the Study Class Circle. The Commission's main purpose is to translate our ideology into community action. All Commissions have periodical meetings with the Central Committee.

YOUTH/WORKER COMMISSION

This commission will become two when deemed necessary. The Youth Commission is responsible for developing programs to bring in more youth and working with other national and international Youth Commissions. Based on our political and ideological positions, the Workers Commission addresses all worker related issues.

WOMEN'S/CULTURAL COMMISSION

This commission will also divide into separate commissions when deemed necessary. The Women's Commission develops programs to recruit more women and deals with issues that affect Raza women. It will also communicate with other national and international Women's Commissions.

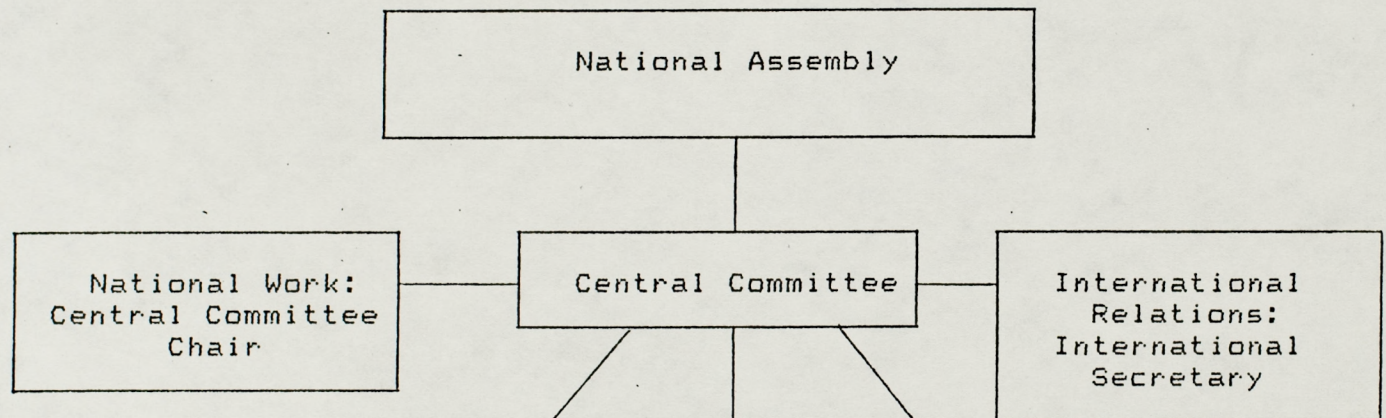
The Cultural Commission deals directly with the struggle to preserve our culture and use it as a weapon against imperialism.

LA RAZA PROJECTS

La Raza Projects is the open community component of the Party. Projects such as August 29th, Fiestas Patriotas, and The Youth Committee are organized under this component. Through La Raza Projects, new projects can be proposed. For some people, it may be the first step towards getting involved with the Partido. La Raza Projects also enable us to work with community agencies and other organizations.

LA RAZA UNIDA NATIONAL PARTY STRUCTURE

INTERNAL



EXTERNAL

