

***Report and Index of
Underway Marine Geophysical Data***

Cook Expedition

Leg 19

(COOK19MV)

R/V Melville

(Issued April 2002)

Ports: ¹⁹
Lyttleton, New Zealand (25 January 2002)
to
Lyttleton, New Zealand (26 February 2002)

Chief Scientist: Kenneth Coale
Moss Landing Marine Laboratory
coale@mlml.calstate.edu

Computer Tech - Jim Charters
Resident Marine Tech - Gene Pillard

Post-Cruise processing and report preparation by
Shipboard Technical Support Group,
Scripps Institution of Oceanography
La Jolla, CA 92093-0223

NOTE: This is an index of underway geophysical data edited and processed after the completion of the cruise leg and is intended primarily for informal use within the institution. This document is not to be reproduced or distributed outside Scripps without prior approval of the chief scientist or the Shipboard Technical Support Group, Scripps Institution of Oceanography, La Jolla, California 92093-0223.

***Report and Index of Navigation
and Underway Geophysical Data***

Processed by the Shipboard Technical Support Group
Scripps Institution of Oceanography

Contents:

Index Chart – gives track of cruise leg, dates, ports, and mileage of each type of data collected.

Track Charts– annotated with dates and hour ticks

Profiles – depth, magnetic and gravity free air anomaly vs. distance. (Sections of track with seismic reflection data have a wide black line along the bottom of the profile.)

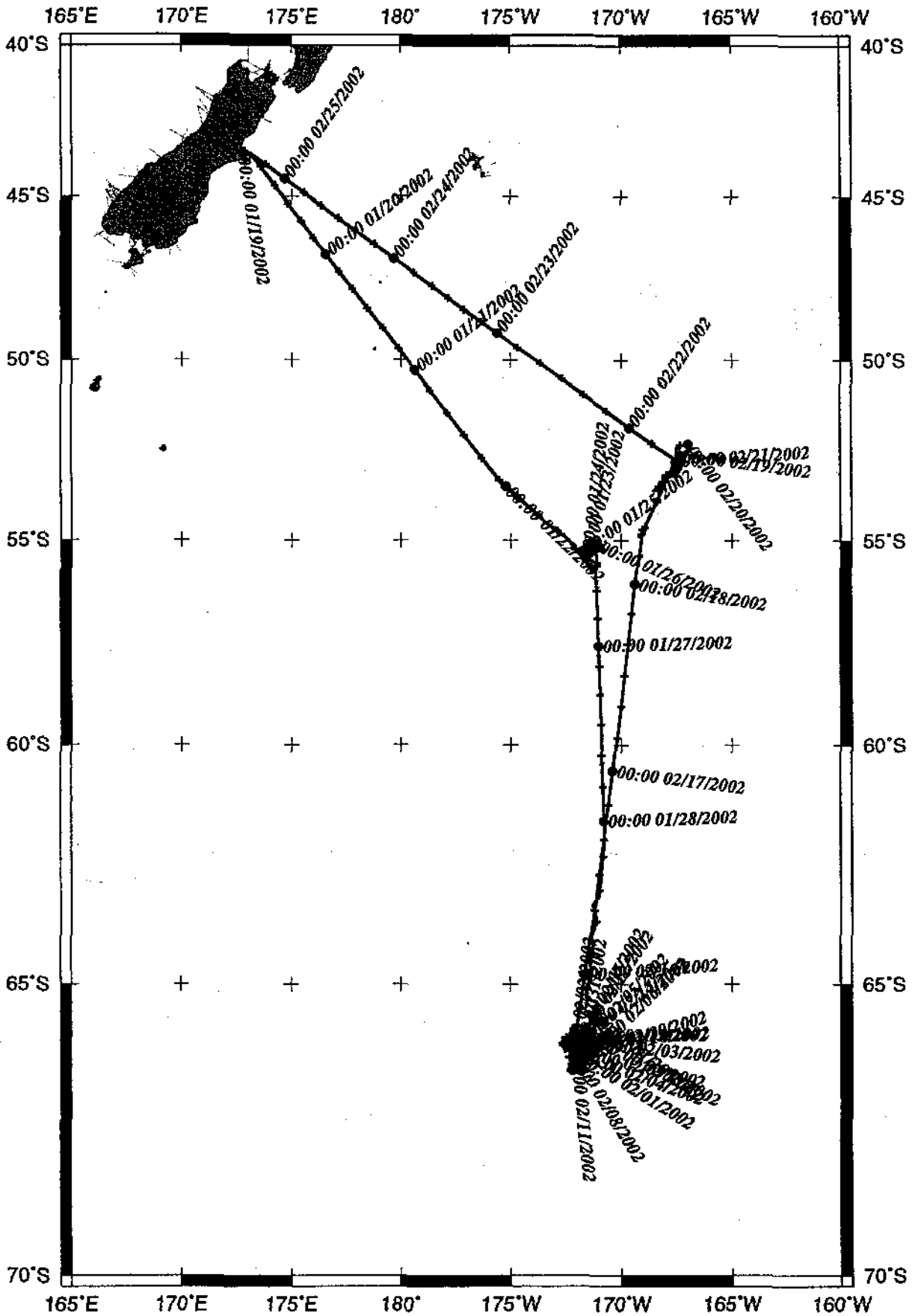
Sample Index – list of begin/end times and positions of all underway records as well as samples and measurements from other disciplines collected on the leg.

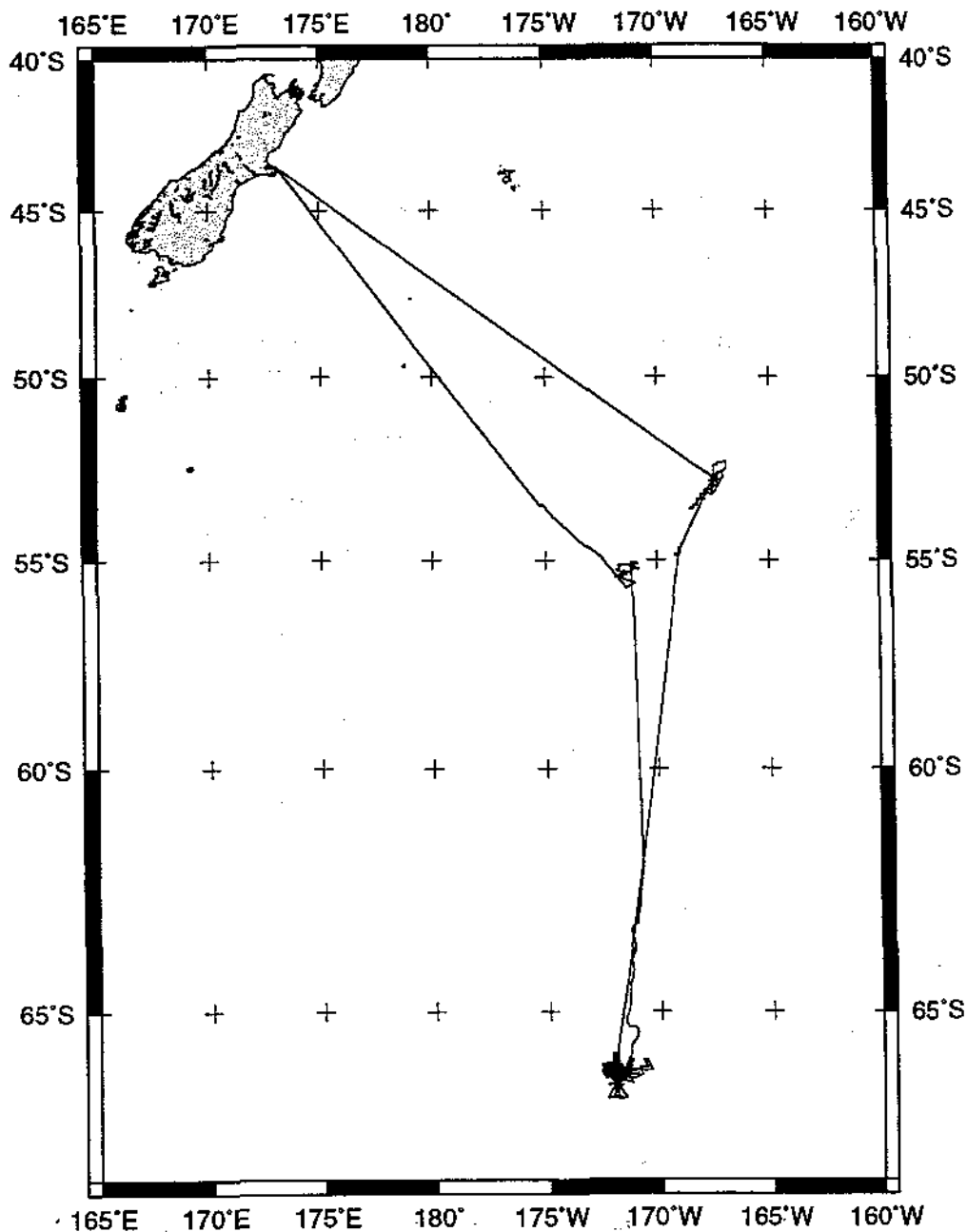
NOTE:

For information on the availability of this current digital data as well as archived digital data contact Stephen P. Miller, Geological Data Center, Scripps Institution of Oceanography, La Jolla, California 92093-0220 Phone: (858)534-1898, internet email: spmiller@ucsd.edu; or his Website: <http://SIOExplorer@ucsd.edu>

Rev 6/2001

COOK19MV





COOK EXPEDITION LEG 19 (COOK19MV)

CHIEF SCIENTIST: Kenneth Coale, Moss Landing Marine Lab

PORTS: Lyttleton - Lyttleton, New Zealand

DATES: 25 January - 26 February 2002

SHIP: R/V Melville

TOTAL MILEAGE OF UNDERWAY DATA COLLECTED

Cruise-5531 miles

Magnetics-none collected

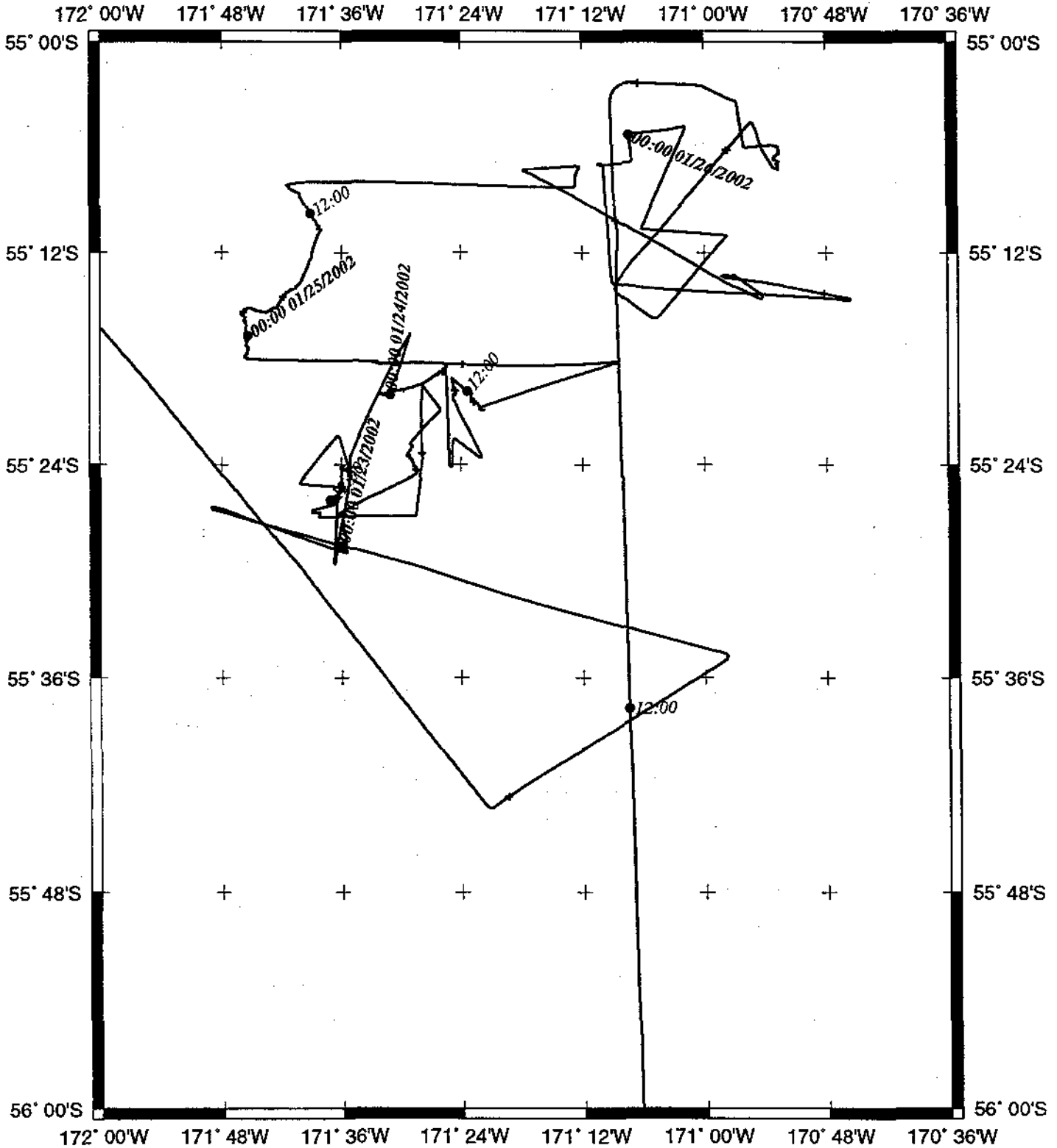
Bathymetry-5370 miles

Seismic Reflection-none collected

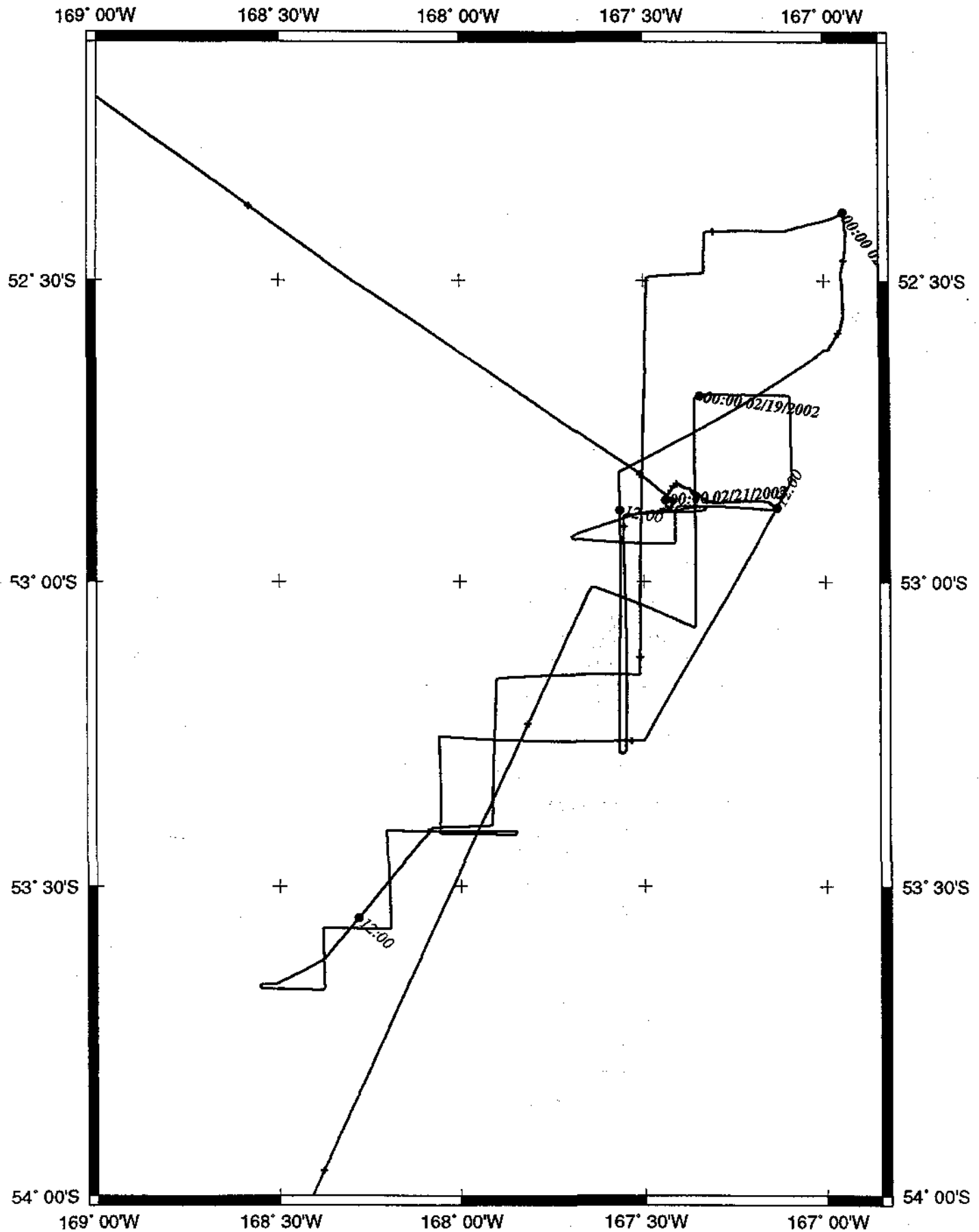
Sea Beam-5370 miles

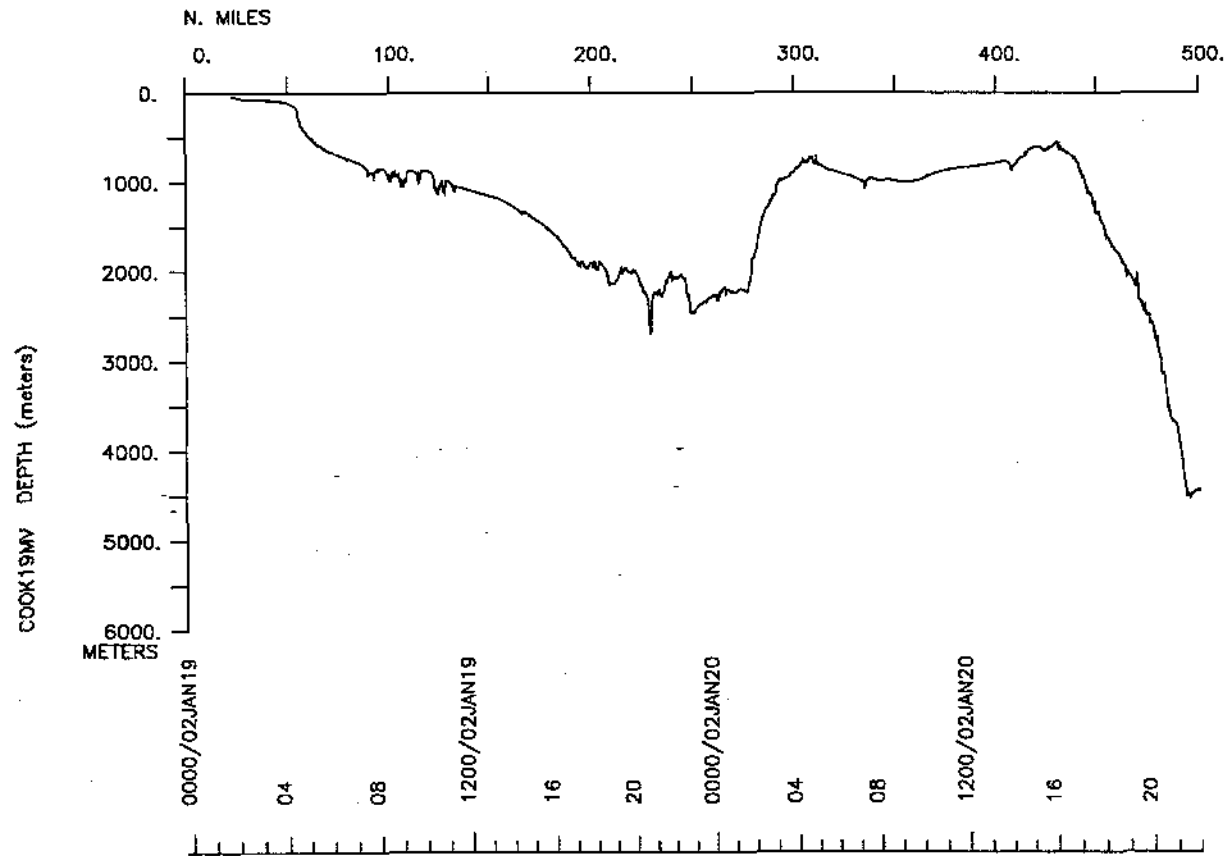
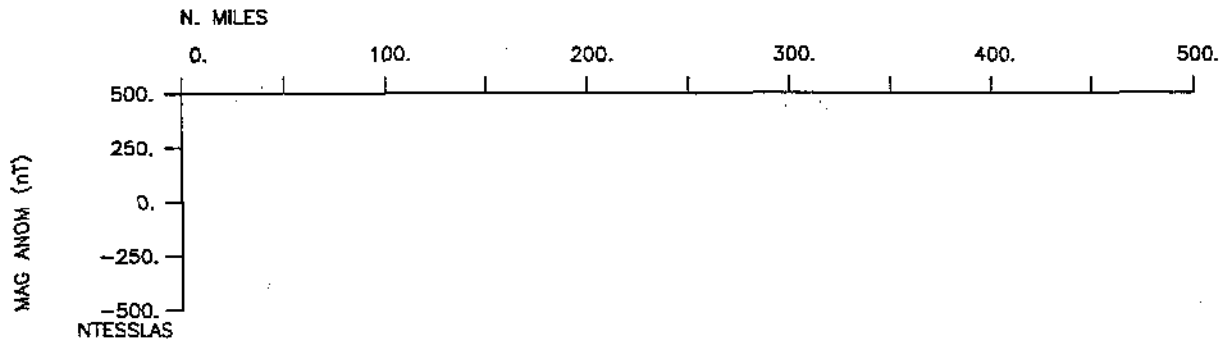
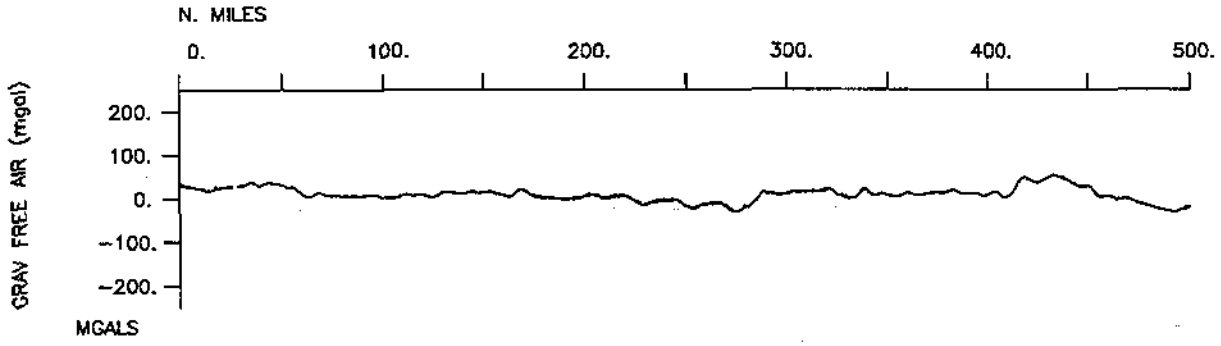
Gravity-5531 miles

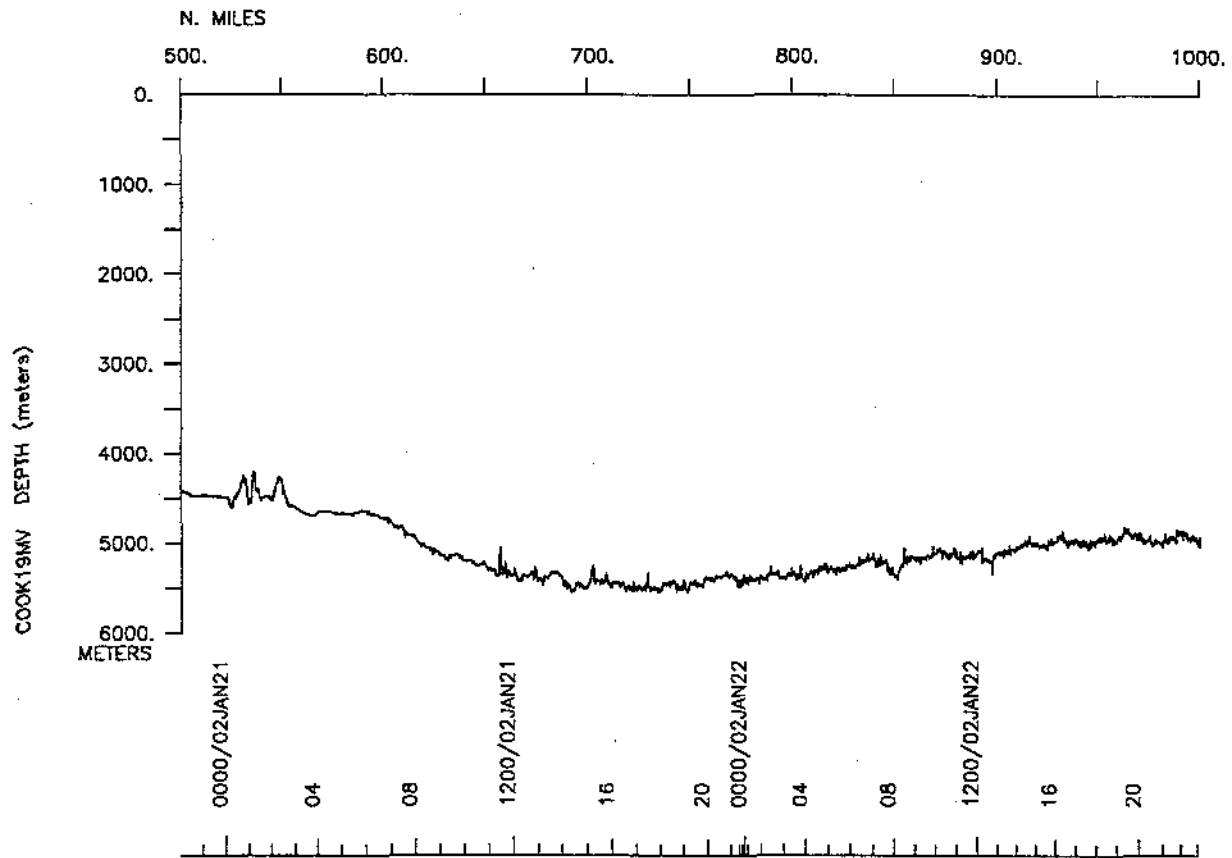
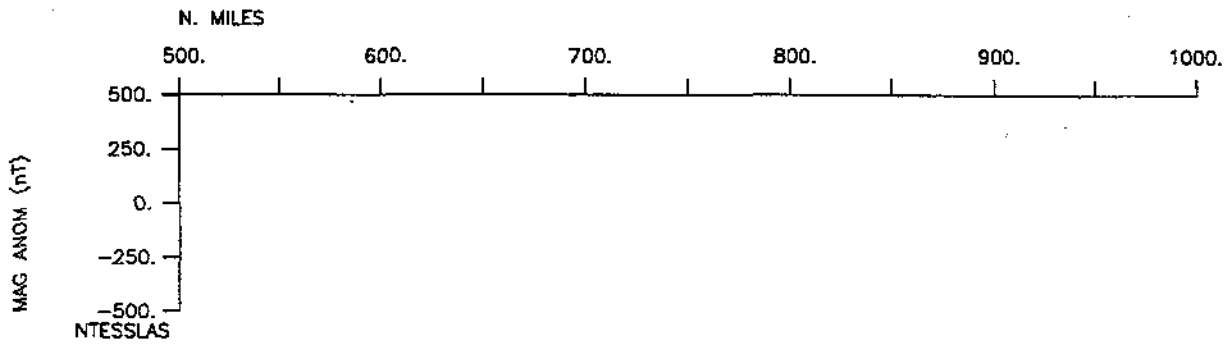
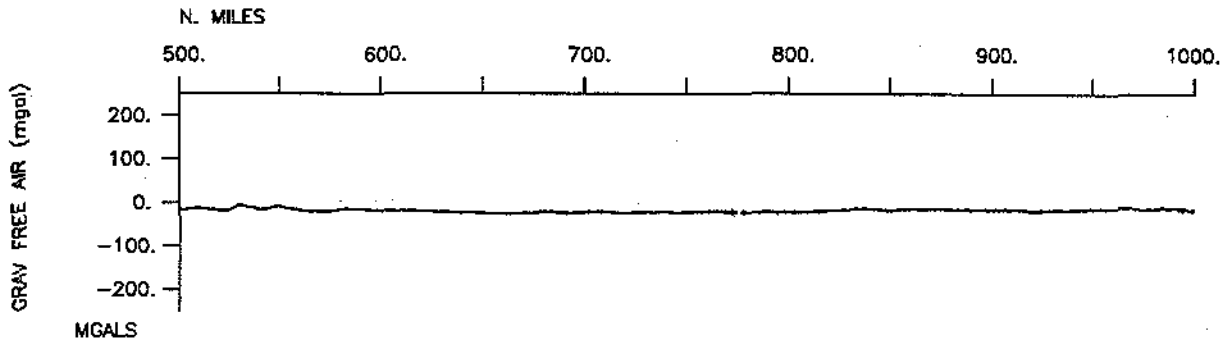
COOK19MV.west.survey

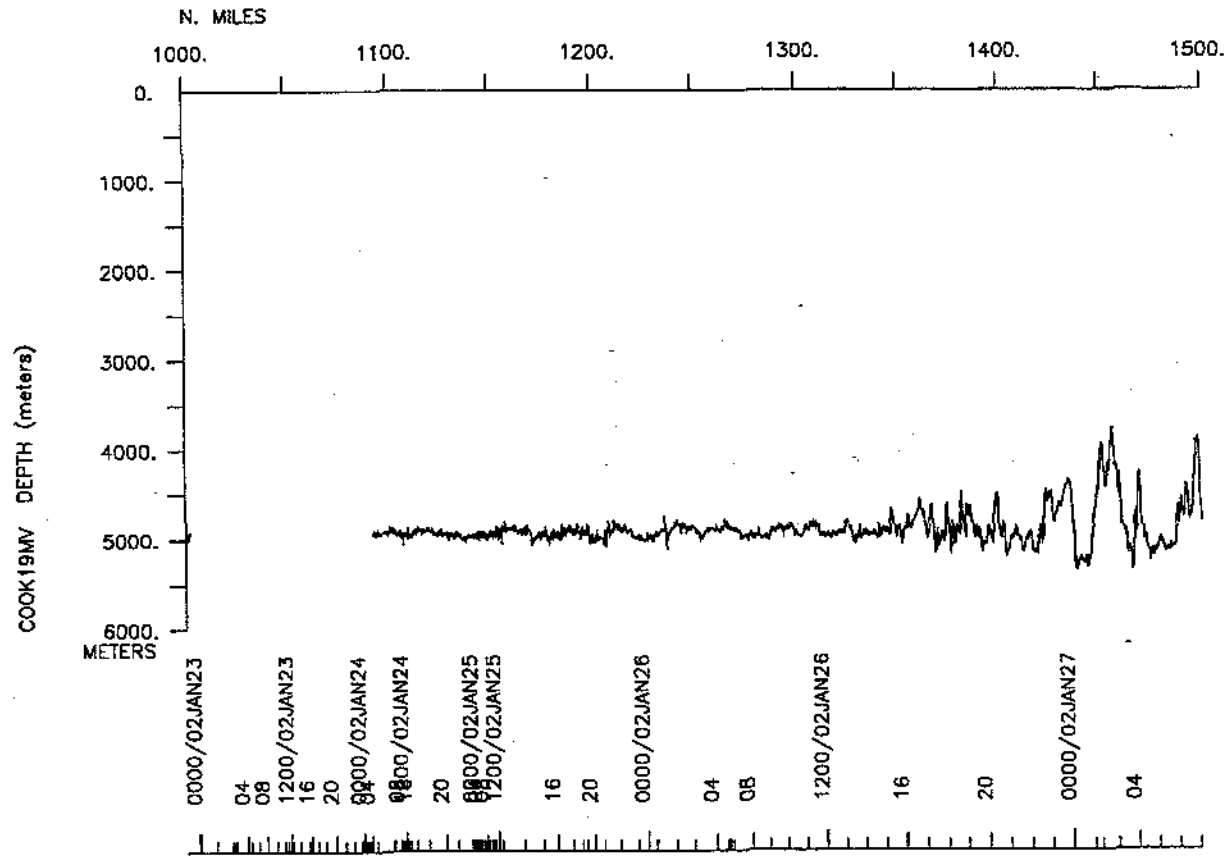
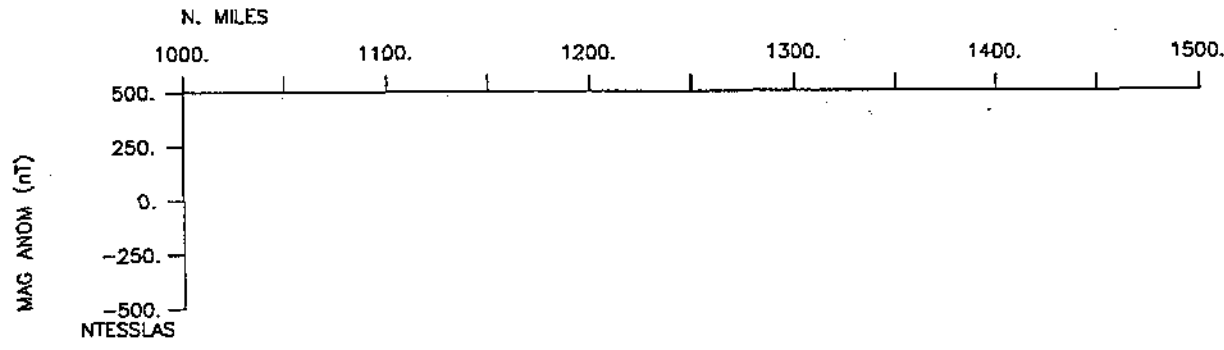
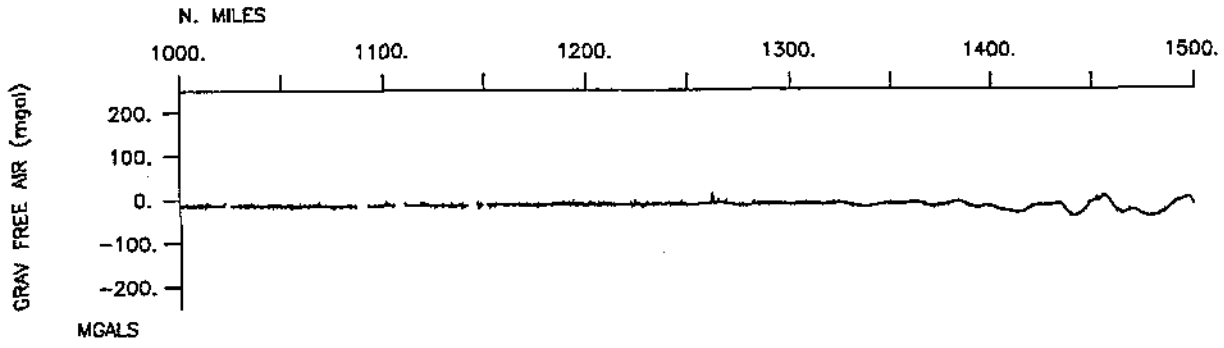


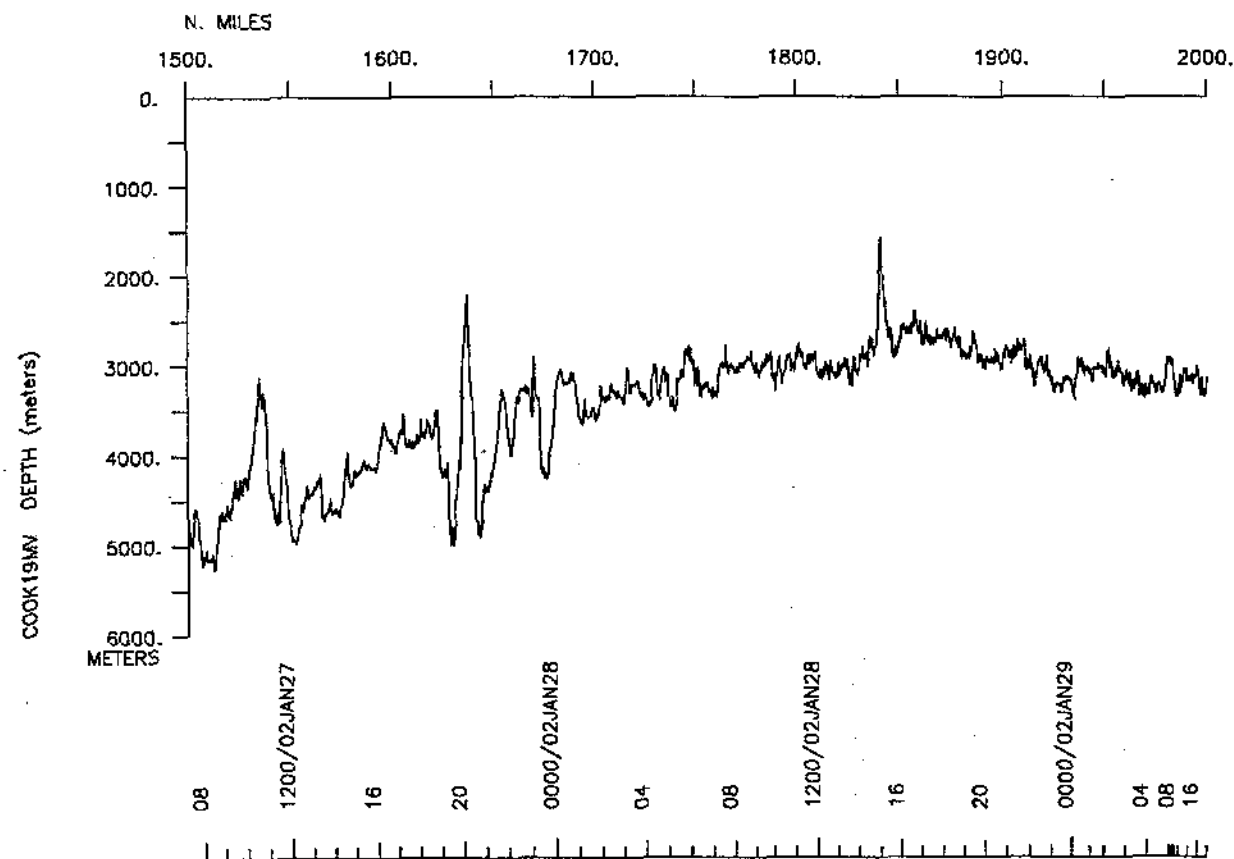
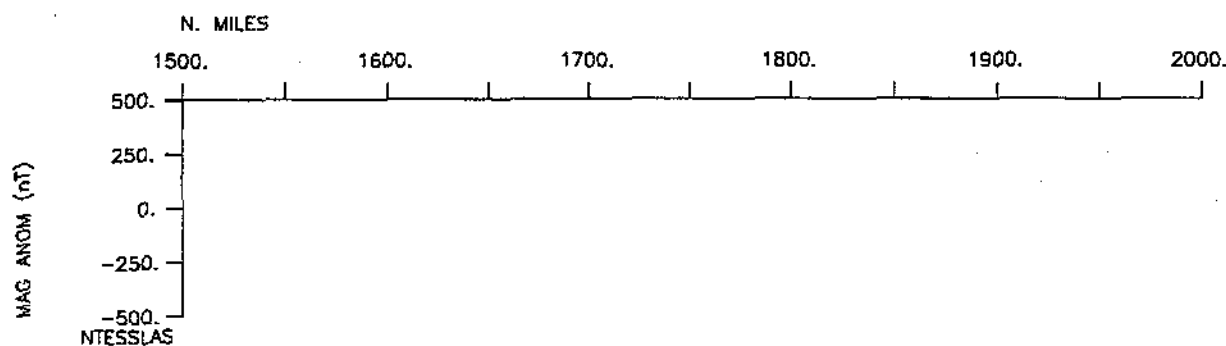
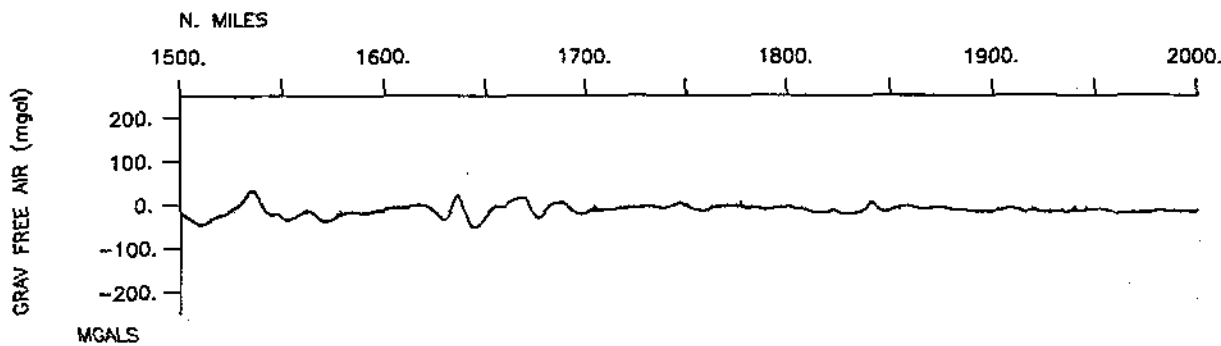
COOK19MV.east.survey

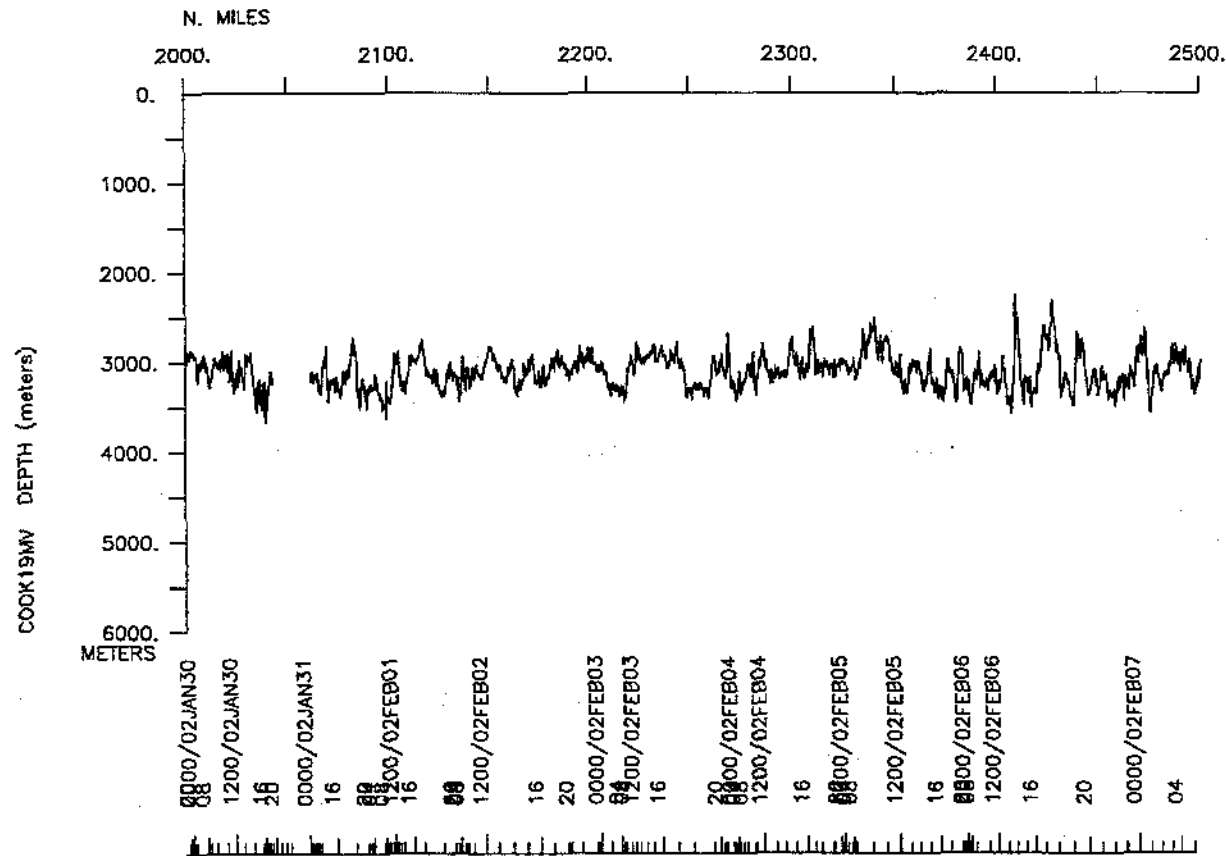
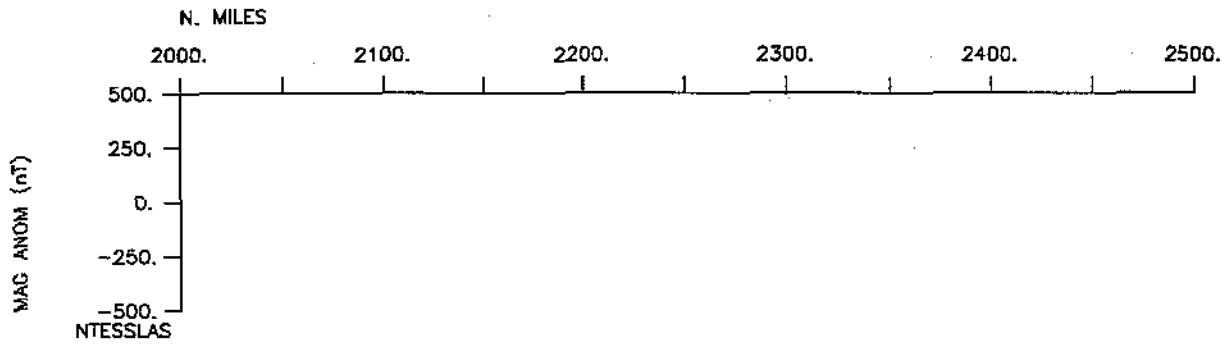
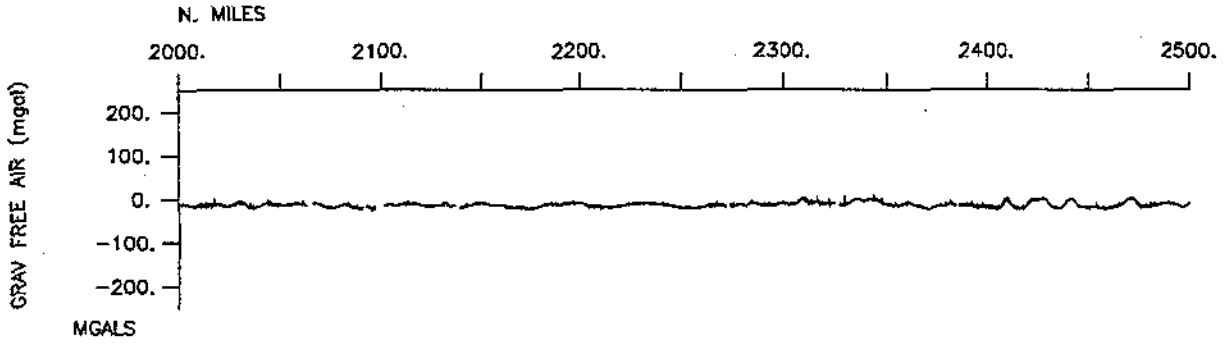


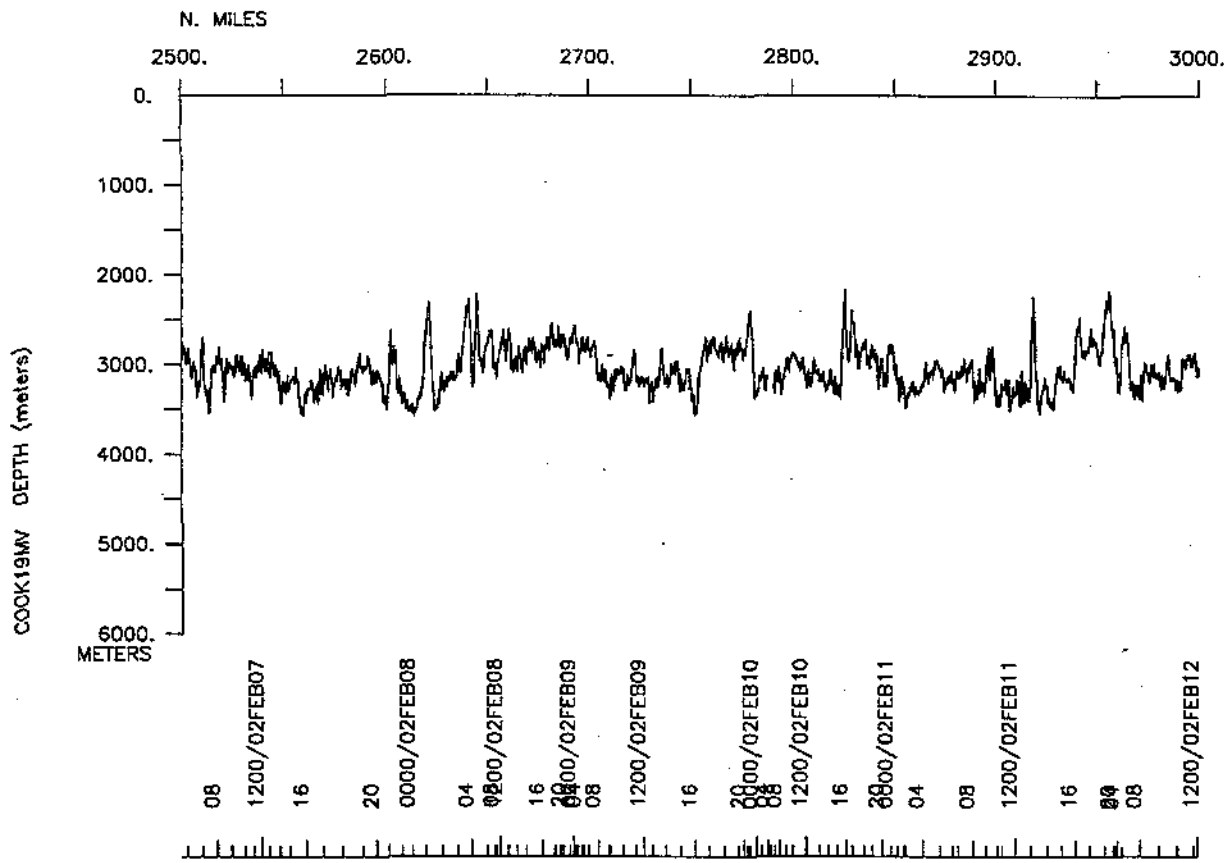
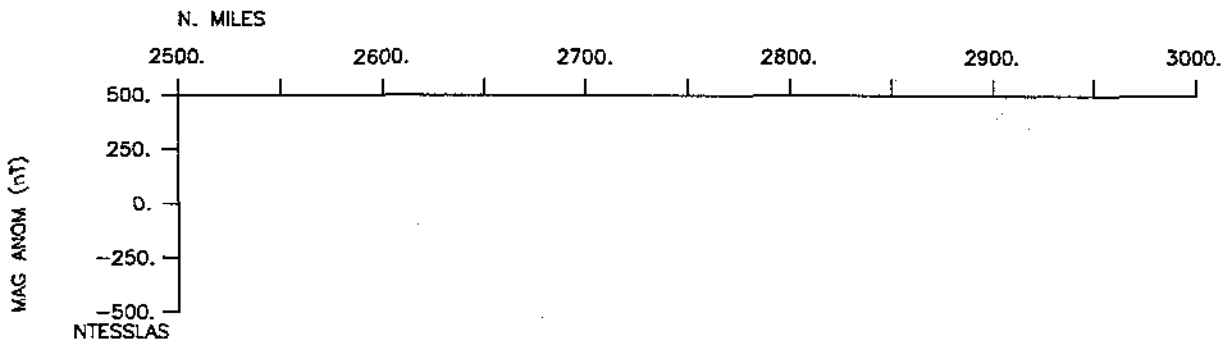
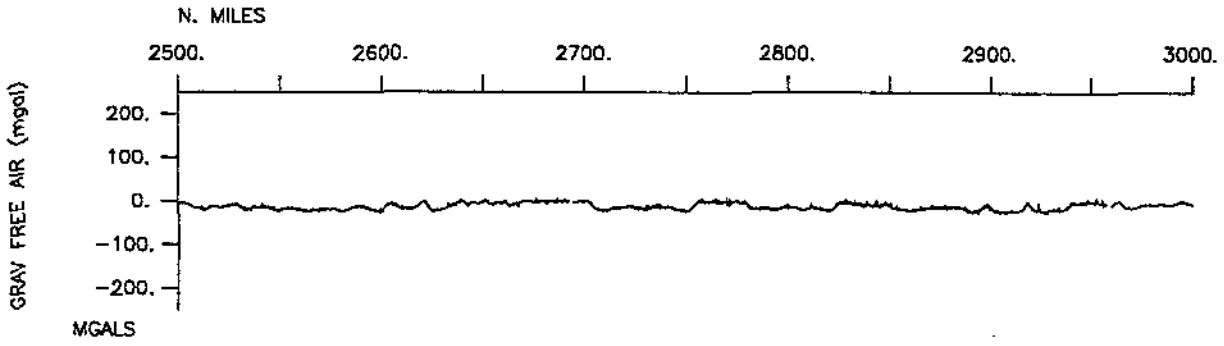


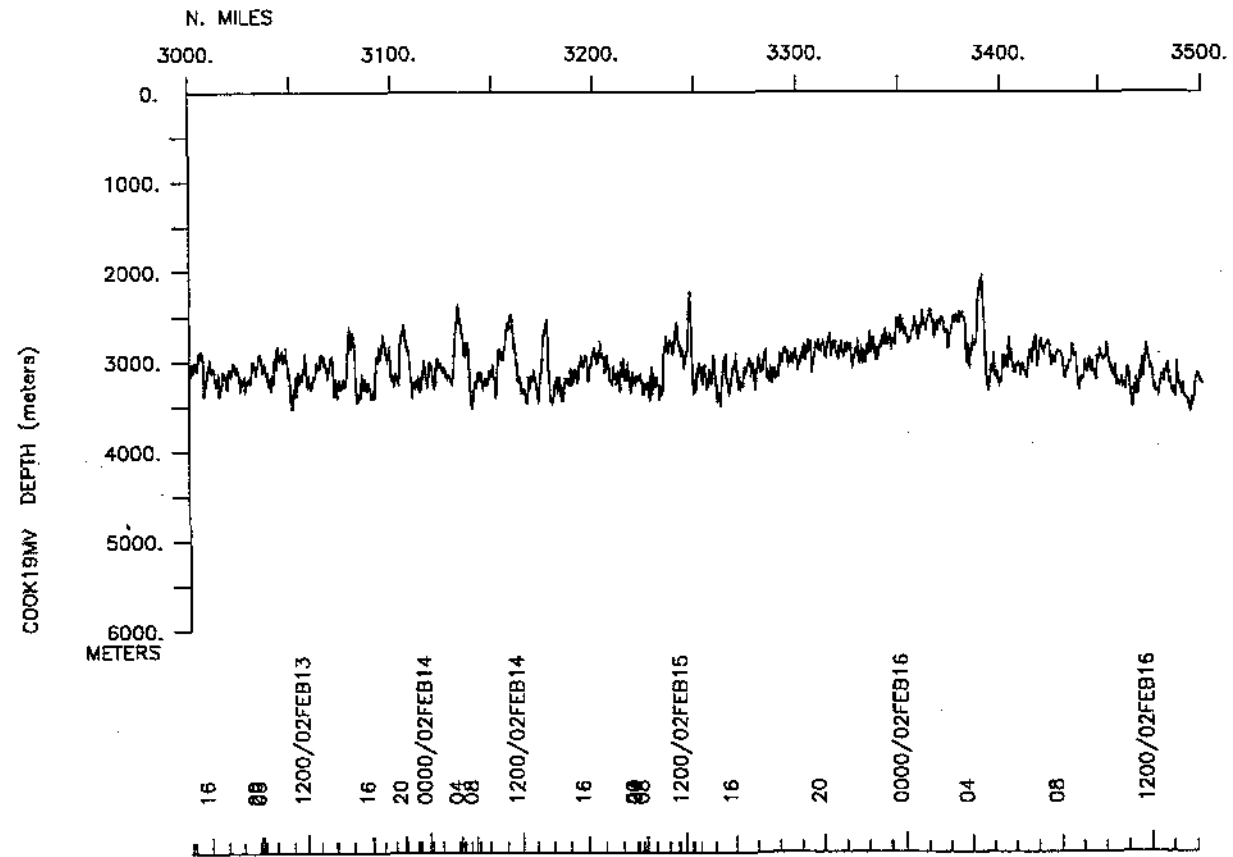
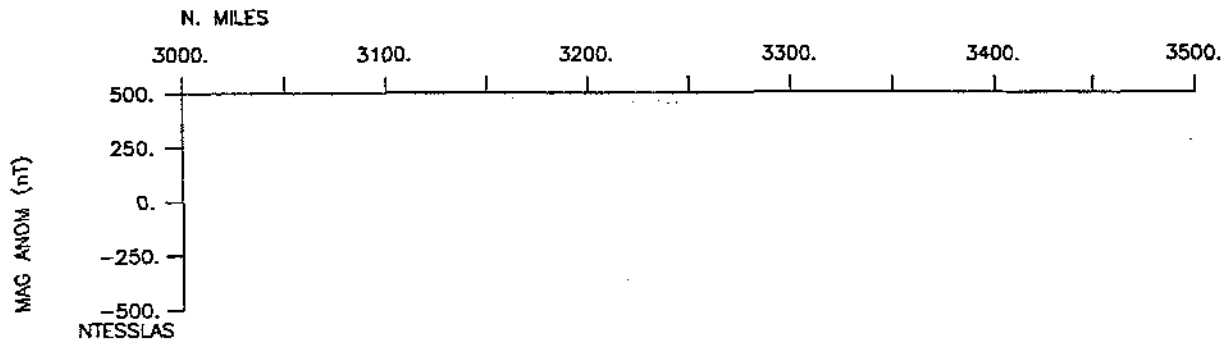
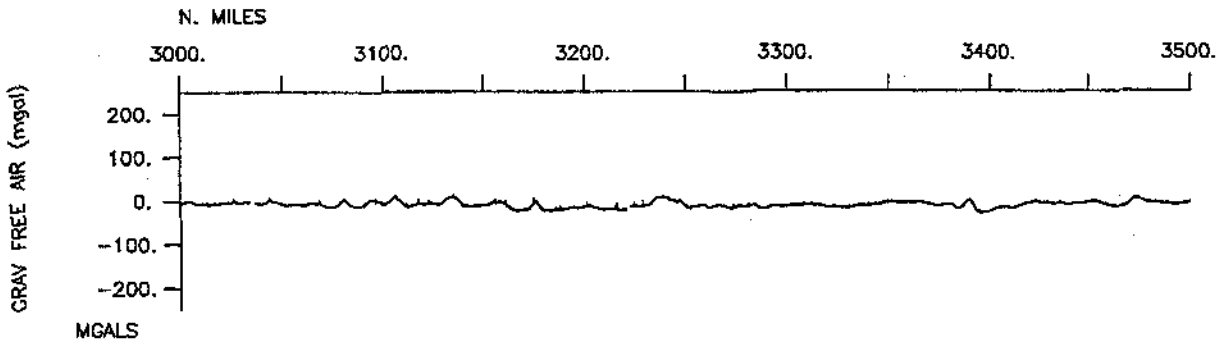


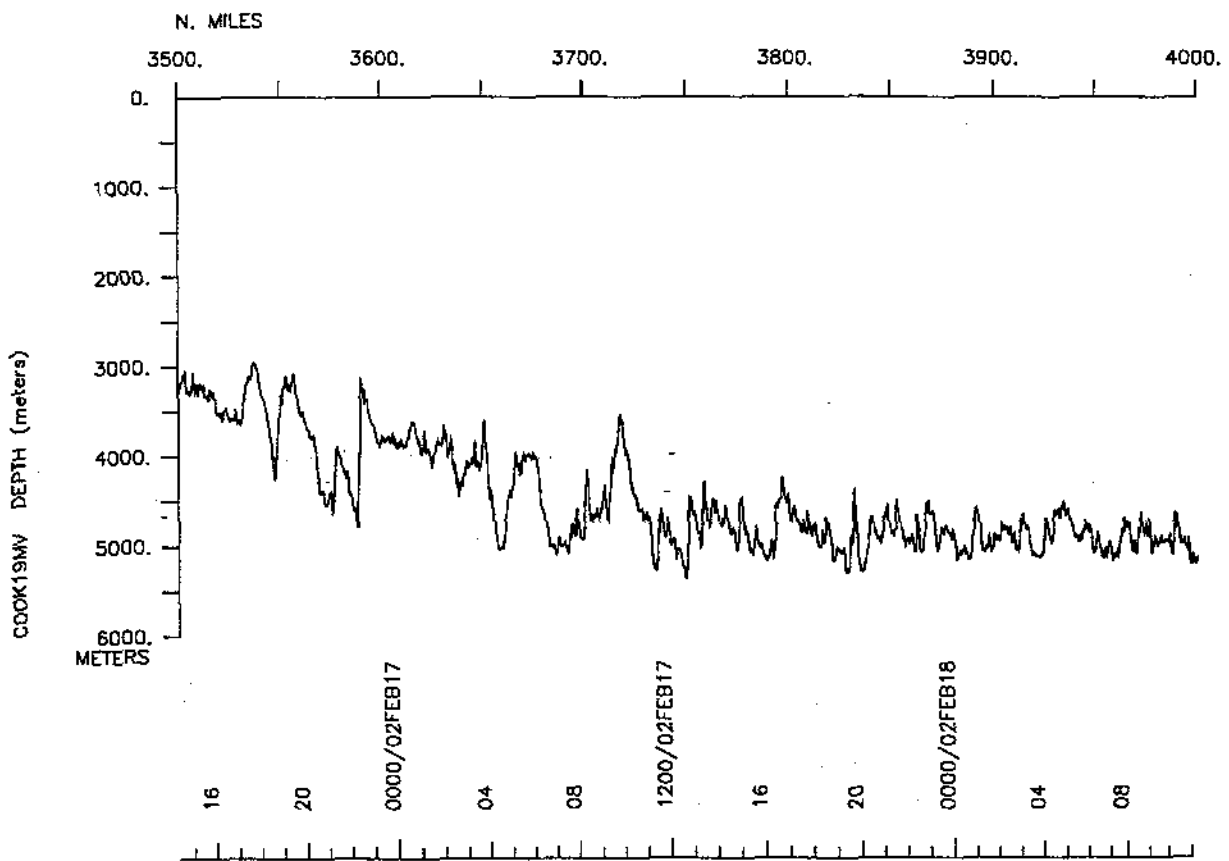
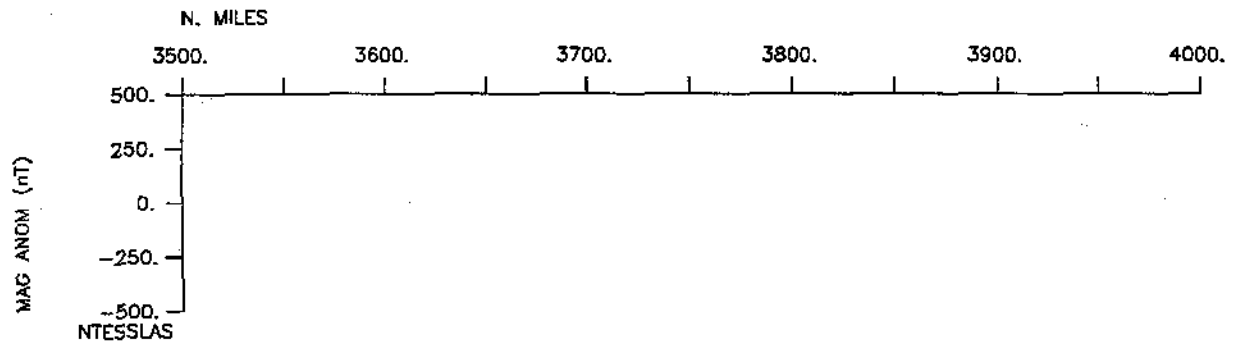
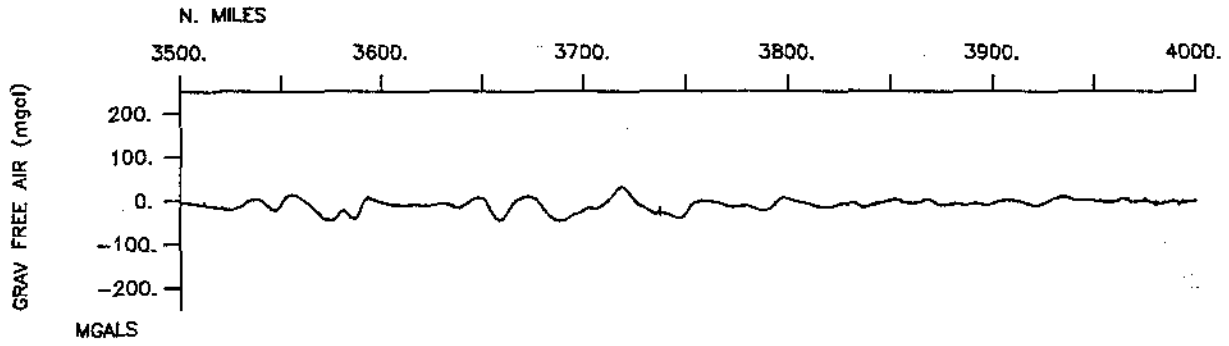


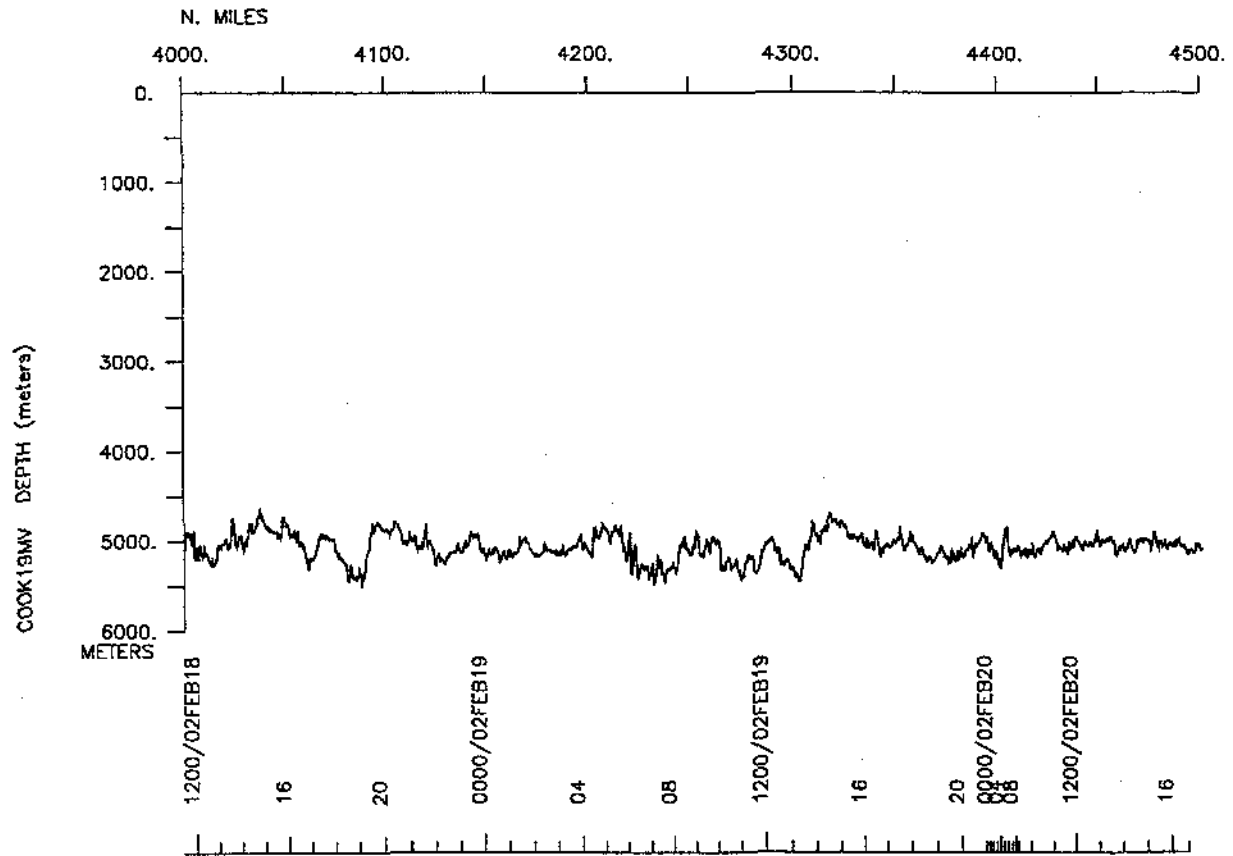
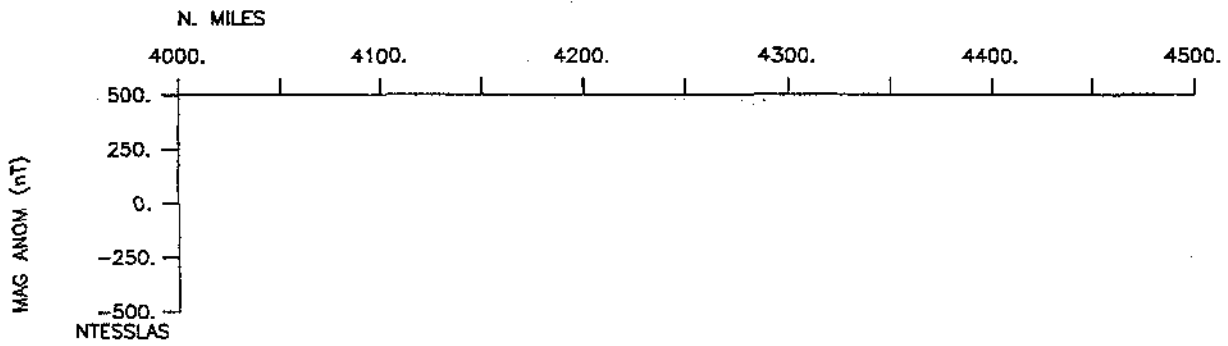
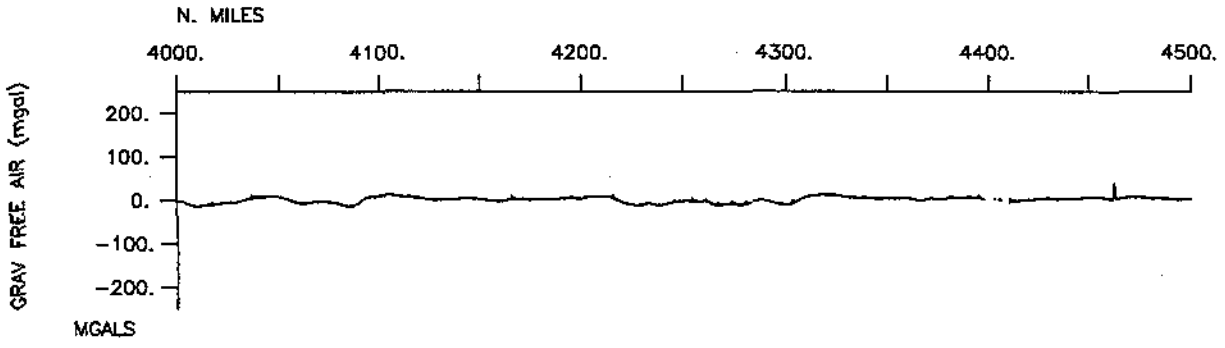


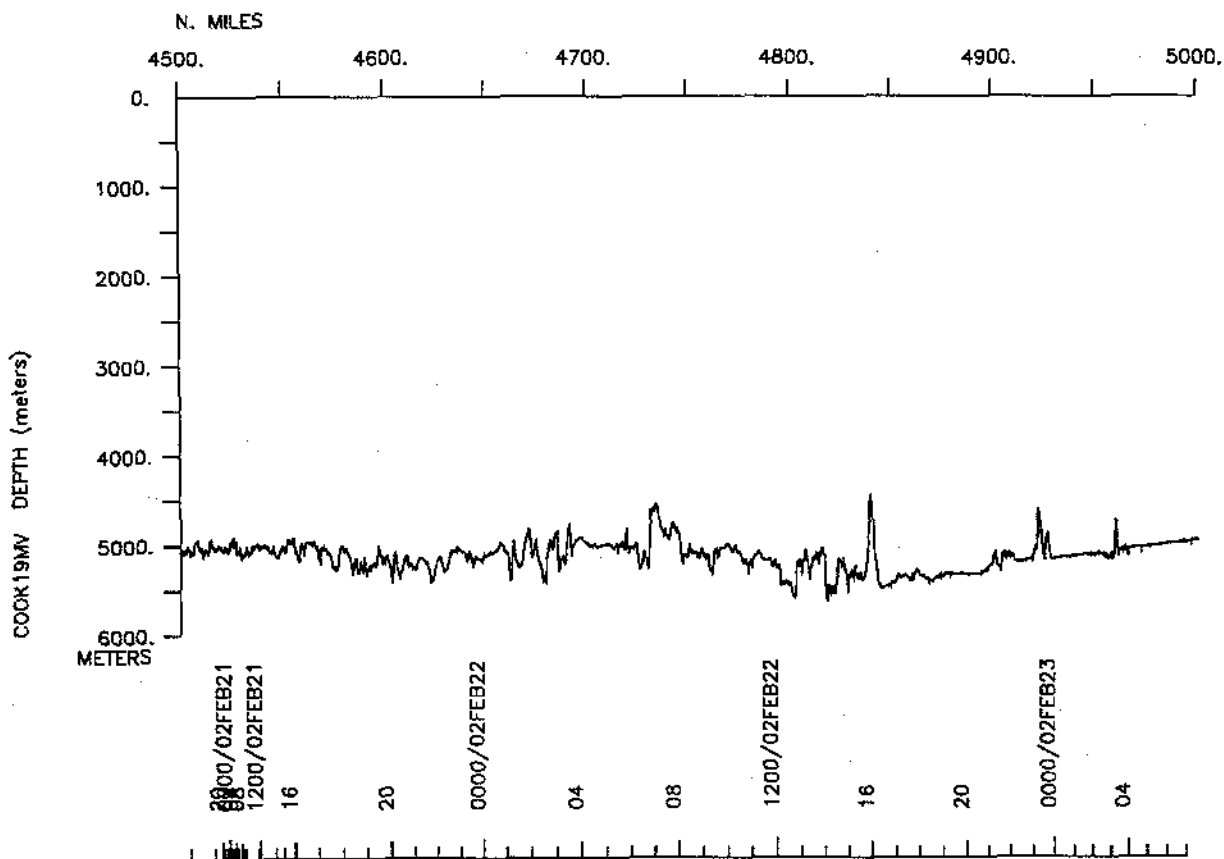
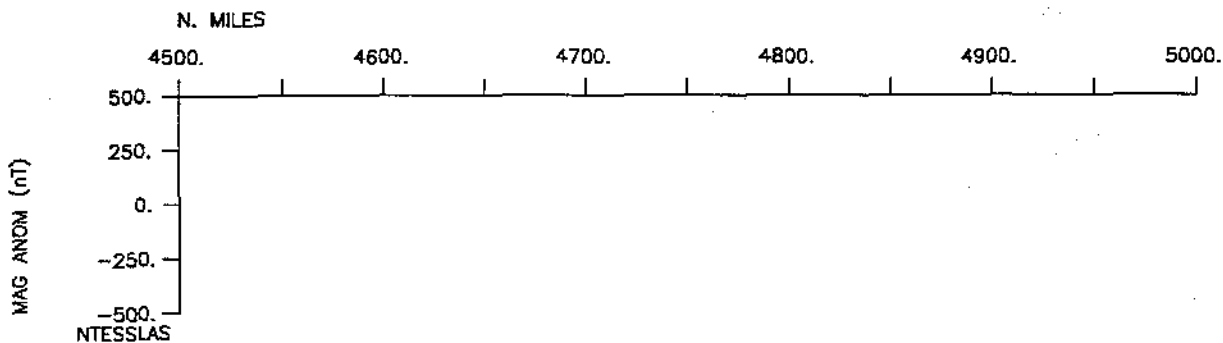
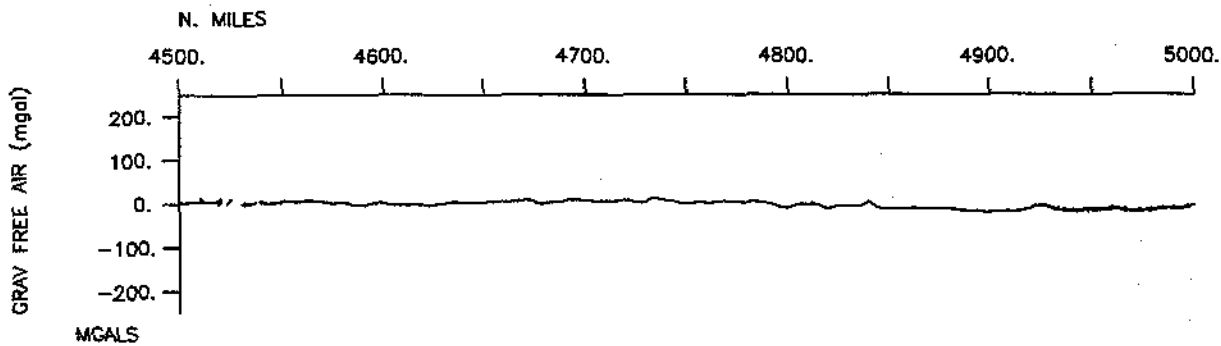


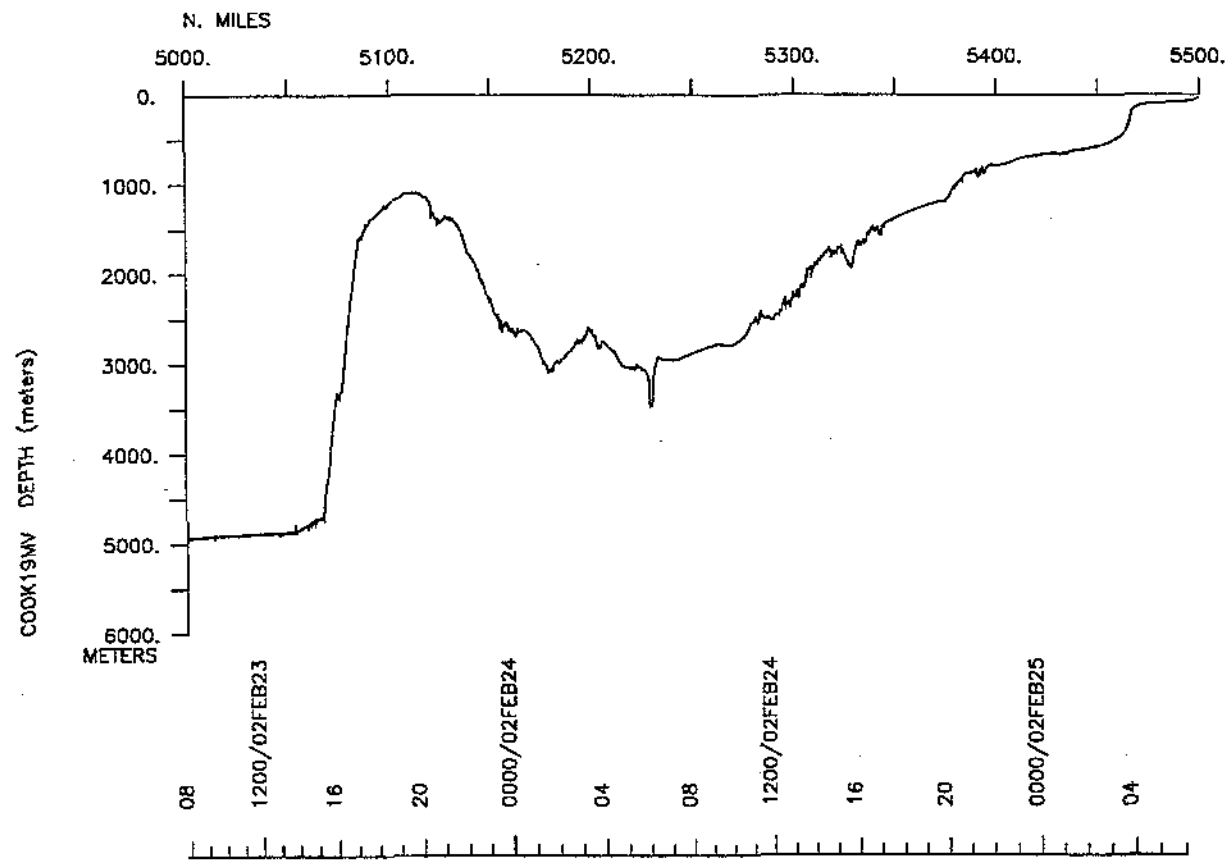
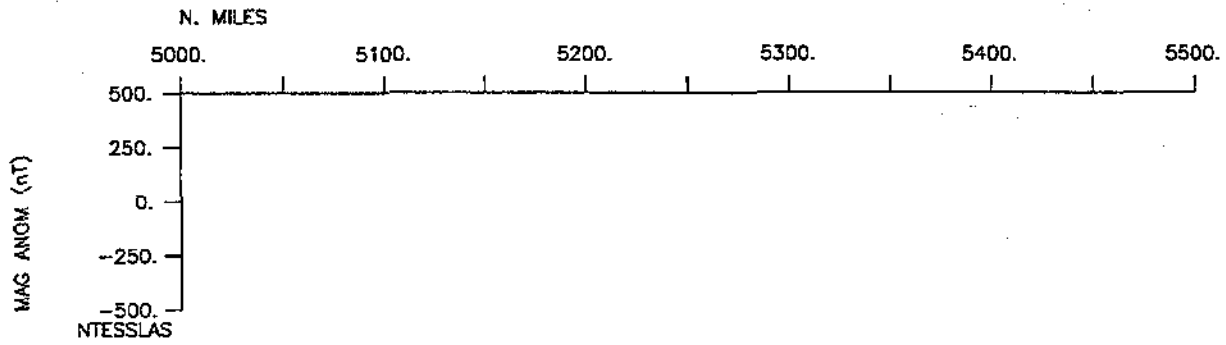
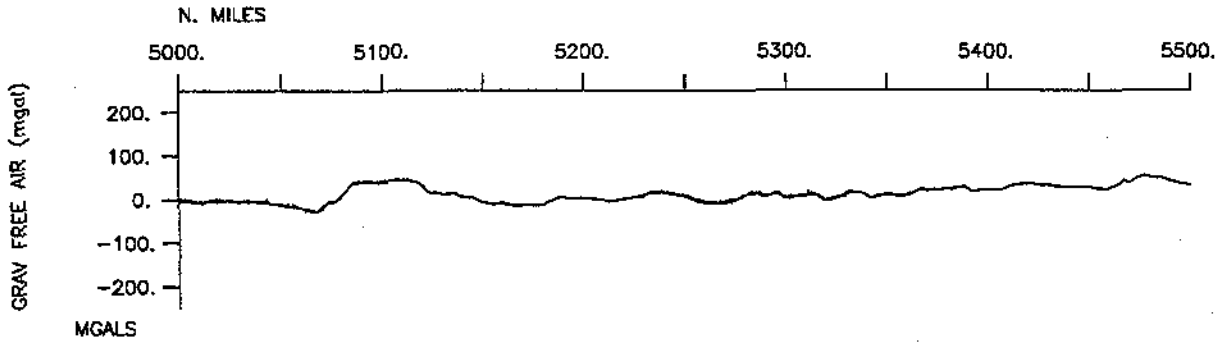


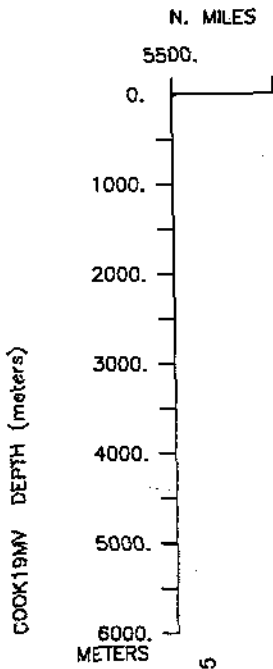
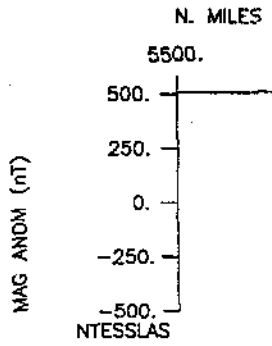
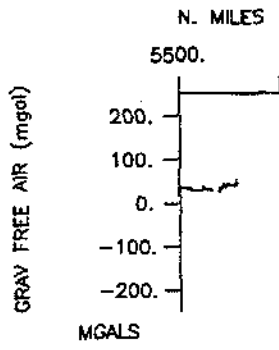












0200/02FEB25



S.I.O. Sample Index

COOK Expedition

Leg 19

(COOK19MV)

R/V Melville

(Issued April 2002)

PORTS:

Lyttleton, New Zealand (25¹⁹ January 2002)

to

Lyttleton, New Zealand (26 February 2002)

Chief Scientist : Kenneth Coale
Moss Landing Marine Laboratory

The Sample Index is a first level interdisciplinary listing of time, position, sample identification and disposition of all samples, records and measurements collected on this cruise leg. The index data are encoded at sea by the resident marine technician and processed on shore by the S.I.O. Shipboard Technical Support Group shortly after the completion of the cruise leg.

Positions are interpolated on the basis of sample time by comparison to a single, edited navigation file. Samples beginning at one time and position and ending at another are entered on two consecutive lines. Disposition and sample type are represented by three and four character codes to permit future computer searches on these parameters. (Listings defining these codes are available from the Shipboard Technical Support Group.)

GDC Cruise ID# 295

#*** Ports ***

2318	180102	LGPT B Lyttleton, New Zealand	43-36.00S 172-43.00E f	COOK19MV
1900	250202	LGPT E Lyttleton, New Zealand	43-36.00S 172-43.00E f	COOK19MV

#*** Personnel ***

#	*****NAME*****	*****TITLE*****	*****AFFILIATION*****	**CRID**
PECS	MLML Coales, K.	Chief Scientist	Moss Land.Marine Lab	COOK19MV
PESP	WHOI Andrews, J.	Technician	Woods Hole	COOK19MV
PEST	SIO Apprill, A.	Grad student	Scripps Institution	COOK19MV
PESP	SIX Bailey	Scientist	Virginia I.Marine S.	COOK19MV
PESP	UHI Bidigare, B.	Scientist	Univ. of Hawaii	COOK19MV
PEST	MLML Brewster, J.	Grad student	Moss Land.Marine Lab	COOK19MV
PESP	UCSB Brzezinski, M.	Scientist	U.C. Santa Barbara	COOK19MV
PESP	UMI Cabrera, A.	Scientist	Univ. of Miami	COOK19MV
PECT	STS Charters, J.	Computer engineer	Scripps Institution	COOK19MV
PESP	WHOI Crossin, G.	Technician	Woods Hole	COOK19MV
PESP	SIX Cochlan, W.	Scientist	San Francisco S. U.	COOK19MV
PESP	MLML Cooper, D.	Scientist	Moss Land.Marine Lab	COOK19MV
PEST	UCSB Demarest, M.	Grad student	U.C. Santa Barbara	COOK19MV
PEST	SIX Delizo, L.	Grad student	Virginia I.Marine S.	COOK19MV
PESP	SIX Gorbunov, M.	Scientist	Rutgers University	COOK19MV
PESP	MLML Gordon, M.	Technician	Moss Land.Marine Lab	COOK19MV
PESP	SIX Herndon, J.	Grad student	San Francisco S. U.	COOK19MV
PESP	SIX Hilting, A.	Scientist	Duke University	COOK19MV
PESP	SIX Hiscock, M.	Scientist	Duke University	COOK19MV
PESP	UMI Hiscock, w.	Scientist	Univ. of Miami	COOK19MV
PESP	MIT Johnson, Z.	Scientist	Mass. Inst. Tech..	COOK19MV
PESP	UCSB Jones, J.	Scientist	U.C. Santa Barbara	COOK19MV
PESP	UMI Koehler, V.	Scientist	Univ. of Miami	COOK19MV
PESP	SIX Koblizek, M.	Scientist	Rutgers University	COOK19MV
PEST	MLML Ladizinsky, N.	Grad student	Moss Land.Marine Lab	COOK19MV
PESP	UHI Landry, M.	Scientist	Univ. of Hawaii	COOK19MV
PEST	SIX Oliver, J.	Grad student	Virginia I.Marine S.	COOK19MV
PESP	STS Palomares, R.	Electronic tech	Scripps Institution	COOK19MV
PERT	STS Pillard, G.	Resident tech	Scripps Institution	COOK19MV
PESP	SIX Roberts, A.	Technician	U.C. Santa Cruz	COOK19MV
PESP	UHI Selph, K.	Scientist	Univ. of Hawaii	COOK19MV
PEST	UHI Sheridan, C.	Grad student	Univ. of Hawaii	COOK19MV
PESP	MLML Smith, G.	Technician	Moss Land.Marine Lab	COOK19MV
PESP	MLML Tanner, S.	Technician	Moss Land.Marine Lab	COOK19MV
PESP	UMI Timothy, D.	Scientist	Univ. of Mass	COOK19MV
PESP	MLML Wang, X.	Scientist	Moss Land.Marine Lab	COOK19MV
PESP	UMI Zhu, A.	Scientist	Univ. of Miami	COOK19MV

#*** NOTES ***

#An 'X' in the (B)egin/(E)nd column following the sample code indicates no #sample or data recovered. A 'C' indicates continuation of data collection #from before the beginning or after the end of a particular leg, (moored #bottom instruments, for example.) The number appearing in the columns #between the sample identifier and the disposition code, for many sample #entries, is the water depth in corrected meters.

#GMT	DDMMYY	SAMP	B	SAMPLE	DISP				p	CRUISE
#TIME	DATE	TZ	CODE	E IDENTIFIER	CODE	LATITUDE	LONGITUDE		c	LEG-SHIP
#	-----			-----						
*** Underway Data Curator - Shipboard Technical Support Group, ext.41899 ***										
*** Digital Data Curator - Geological Data Center, S.P. Miller, ext.41898 ***										
*** Log Books ***										
0442	230102	0	LBUW	B SOFeX Event Log	MLML	55-23.89S	171-28.77W	g	COOK19MV	
1333	210202	0	LBUW	E SOFeX Event Log	MLML	52-52.90S	167-25.53W	g	COOK19MV	
*** MultiBeam Data (vertical beam and side scan) ***										
0142	190102	0	MBSR	B v.beam&sidescan	GDC	43-36.32S	172-43.18E	g	COOK19MV	
0653	250202	0	MBSR	E v.beam&sidescan	GDC	43-44.47S	173-20.65E	g	COOK19MV	
*** Digital Gravity ***										
2348	180102	0	GVDD	B Digital gravity	GDC	43-36.32S	172-43.18E	g	COOK19MV	
1900	250202	0	GVDD	E Digital gravity	GDC	43-36.51S	172-46.01E	g	COOK19MV	
*** Integrated Meteorological Acquisition System ***										
2318	180102	0	IMET	B Weather Measurements	GDC	43-36.32S	172-43.18E	g	COOK19MV	
1900	250202	0	IMET	E Weather measurements	GDC	43-36.51S	172-46.01E	g	COOK19MV	
*** Acoustic Doppler Current Profiler ***										
2318	180102	0	ADCP	B 300kHz current meas.	GDC	43-36.32S	172-43.18E	g	COOK19MV	
1900	250202	0	ADCP	E 300kHz current meas.	GDC	43-36.51S	172-46.01E	g	COOK19MV	
*** Atmospheric samples ***										
0001	210102	0	ASXX	B Atmospheric samples	MLML	50-16.47S	179-22.07W	g	COOK19MV	
0001	210202	0	ASXX	E Atmospheric samples	MLML	52-51.88S	167-26.43W	g	COOK19MV	
*** Continuous surface water samples ***										
0001	210102	0	CSXX	B Surface H2O, SF6	MLML	50-16.47S	179-22.07W	g	COOK19MV	
0001	210202	0	CSXX	E TSO G	MLML	52-51.88S	167-26.43W	g	COOK19MV	
0424	230102	0	CSXX	B PCO2,NO2,Si,Chloro	MLML	55-24.06S	171-28.72W	g	COOK19MV	
0001	210202	0	CSXX	E BioSi, Hplc Pigments	MLML	52-51.88S	167-26.43W	g	COOK19MV	
0424	230102	0	CSXX	B Stable N Isotopes	MLML	55-24.06S	171-28.72W	g	COOK19MV	
0001	210202	0	CSXX	E TCO2	MLML	52-51.88S	167-26.43W	g	COOK19MV	

#GMT	DDMMYY	SAMP	B	SAMPLE	DISP				p	CRUISE
#TIME	DATE	TZ	CODE	E IDENTIFIER	CODE	LATITUDE	LONGITUDE		c	LEG-SHIP
#										
#*** Hydrocasts GoFlow ***										
2321	210102	0	HCGF	B COMMENCE GO FLOW H	MLML	53-33.38S	175-11.76W	g		COOK19MV
0048	220102	0	HCGF	E hydrocasts complet	MLML	53-31.99S	175-09.91W	g		COOK19MV
2215	240102	0	HCGF	B GO FL #2	2 btls MLML	55-17.80S	171-45.51W	g		COOK19MV
2238	240102	0	HCGF	E Enrichment	20m MLML	55-17.27S	171-45.57W	g		COOK19MV
0537	250102	0	HCGF	B GO FLO #2	2 btls MLML	55-15.23S	171-44.74W	g		COOK19MV
0547	250102	0	HCGF	E trace metals	100m MLML	55-15.31S	171-44.63W	g		COOK19MV
0734	280102	0	HCGF	B GO FLO #3	2 btls MLML	63-04.22S	170-58.25W	g		COOK19MV
0814	290102	0	HCGF	E trace metals	50m MLML	66-20.12S	171-57.59W	g		COOK19MV
0208	300102	0	HCGF	B Go flo #4	2 btls MLML	66-20.04S	171-57.63W	g		COOK19MV
0245	300102	0	HCGF	E trace metals	100m MLML	66-20.05S	171-57.65W	g		COOK19MV
0610	300102	0	HCGF	B GOFLO #5	2 btls MLML	66-20.04S	171-57.63W	g		COOK19MV
0624	300102	0	HCGF	E trace metals	150m MLML	66-20.04S	171-57.63W	g		COOK19MV
0210	310102	0	HCGF	B Go Flo #6	2 btls MLML	66-36.69S	171-49.13W	g		COOK19MV
0240	310102	0	HCGF	E trace metals	20m MLML	66-36.69S	171-49.15W	g		COOK19MV
1106	310102	0	HCGF	B Go Flo #7	2 btls MLML	66-36.69S	171-49.14W	g		COOK19MV
1240	310102	0	HCGF	E enrichment (S)	25m MLML	66-36.69S	171-49.14W	g		COOK19MV
2050	310102	0	HCGF	B Go Flo #8	2 btls MLML	66-19.18S	171-54.89W	g		COOK19MV
2055	310102	0	HCGF	E trace metals	25m MLML	66-19.16S	171-54.86W	g		COOK19MV
0123	010202	0	HCGF	B Go Flo #9	2 btls MLML	66-18.23S	171-55.65W	g		COOK19MV
0147	010202	0	HCGF	E trace metals	25m MLML	66-18.23S	171-55.66W	g		COOK19MV
2240	010202	0	HCGF	B Go Flo #10	2 btls MLML	66-35.62S	172-12.05W	g		COOK19MV
2245	010202	0	HCGF	E trace metals	25m MLML	66-35.62S	172-12.04W	g		COOK19MV
0134	020202	0	HCGF	B Go Flo #11	2 btls MLML	66-35.62S	172-13.29W	g		COOK19MV
0149	020202	0	HCGF	E trace metals	25m MLML	66-35.60S	172-13.58W	g		COOK19MV
2000	020202	0	HCGF	B Go Flo #11	2 btls MLML	65-53.27S	171-22.68W	g		COOK19MV
2020	020202	0	HCGF	E trace metals	20m MLML	65-53.61S	171-23.18W	g		COOK19MV
2337	020202	0	HCGF	B Go Flo#12	2 btls MLML	66-03.85S	171-34.31W	g		COOK19MV
2346	020202	0	HCGF	E trace metals	20m MLML	66-03.86S	171-34.30W	g		COOK19MV
0243	030202	0	HCGF	B Go Flo #13	2 btls MLML	66-08.57S	171-40.62W	g		COOK19MV
0257	030202	0	HCGF	E trace metals	20m MLML	66-08.63S	171-40.74W	g		COOK19MV
0530	030202	0	HCGF	B GO FLO #15	2 btls MLML	66-12.32S	171-48.22W	g		COOK19MV
0534	030202	0	HCGF	E trace metals	20m MLML	66-12.32S	171-48.22W	g		COOK19MV
0746	030202	0	HCGF	B GO Flo #16	2 btls MLML	66-14.27S	171-51.11W	g		COOK19MV
0752	030202	0	HCGF	E trace metals	20m MLML	66-14.27S	171-51.11W	g		COOK19MV
1004	030202	0	HCGF	B Go Flo #17	2 btls MLML	66-16.16S	171-54.01W	g		COOK19MV
1017	030202	0	HCGF	E trace metals	20m MLML	66-16.23S	171-54.23W	g		COOK19MV

#GMT #TIME #	DDMMYY DATE	TZ	SAMP CODE	B E	SAMPLE IDENTIFIER	DISP CODE	LATITUDE	LONGITUDE	p c	CRUISE LEG-SHIP
1230	030202	0	HCGF	B	Go Flo#18	2 btls	MLML 66-18.02S	171-57.24W	g	COOK19MV
1237	030202	0	HCGF	E	trace metals	20m	MLML 66-18.02S	171-57.24W	g	COOK19MV
0045	040202	0	HCGF	B	Go Flo #19	2 btls	MLML 66-15.57S	171-57.85W	g	COOK19MV
0116	040202	0	HCGF	E	trace metals	40m	MLML 66-15.57S	171-57.85W	g	COOK19MV
0558	040202	0	HCGF	B	GO FLO #20	2 btls	MLML 66-14.44S	172-01.70W	g	COOK19MV
0616	040202	0	HCGF	E	trace metals	100m	MLML 66-14.42S	172-01.90W	g	COOK19MV
0928	040202	0	HCGF	B	Go Flo #21	2 btls	MLML 66-15.80S	172-05.55W	g	COOK19MV
0949	040202	0	HCGF	E	trace metals	150m	MLML 66-15.80S	172-05.55W	g	COOK19MV
2153	040202	0	HCGF	B	Go Flo #22	2 btls	MLML 66-16.53S	172-08.06W	g	COOK19MV
2157	040202	0	HCGF	E	trace metals	20m	MLML 66-16.53S	172-08.05W	g	COOK19MV
0007	050202	0	HCGF	B	Go Flo #23	2 btls	MLML 66-17.31S	172-08.06W	g	COOK19MV
0025	050202	0	HCGF	E	trace metals	20m	MLML 66-17.32S	172-08.06W	g	COOK19MV
2048	050202	0	HCGF	B	Go Flo #24	2 btls	MLML 66-18.68S	171-22.40W	g	COOK19MV
2101	050202	0	HCGF	E	trace metals	60m	MLML 66-18.68S	171-22.41W	g	COOK19MV
2255	050202	0	HCGF	B	Go Flo #25	2 btls	MLML 66-18.87S	171-22.54W	g	COOK19MV
2315	050202	0	HCGF	E	trace metals	100m	MLML 66-19.07S	171-23.25W	g	COOK19MV
0320	060202	0	HCGF	B	GOFLO #26	2 btls	MLML 66-19.07S	171-23.36W	g	COOK19MV
0346	060202	0	HCGF	E	trace metals	150m	MLML 66-19.07S	171-23.36W	g	COOK19MV
0734	080202	0	HCGF	B	Go Flo #27	2 btls	MLML 66-14.40S	172-07.21W	g	COOK19MV
0737	080202	0	HCGF	E	trace metals	25m	MLML 66-14.40S	172-07.21W	g	COOK19MV
2041	080202	0	HCGF	B	Go Flo #28	2 btls	MLML 66-10.33S	172-12.80W	g	COOK19MV
2045	080202	0	HCGF	E	trace metals	20m	MLML 66-10.33S	172-12.79W	g	COOK19MV
2049	080202	0	HCGF	B	Go Flo #29	2 btls	MLML 66-10.33S	172-12.80W	g	COOK19MV
2101	080202	0	HCGF	E	trace metals	25m	MLML 66-10.33S	172-12.80W	g	COOK19MV
2112	110202	0	HCGF	B	Go Flo #30	2 btls	MLML 66-06.13S	172-03.90W	g	COOK19MV
2128	110202	0	HCGF	E	trace metals	60m	MLML 66-06.13S	172-03.90W	g	COOK19MV
2330	110202	0	HCGF	B	Go Flo #31	2 btls	MLML 66-06.13S	172-03.91W	g	COOK19MV
2358	110202	0	HCGF	E	trace metals	100m	MLML 66-06.13S	172-03.91W	g	COOK19MV
0326	120202	0	HCGF	B	GO FLO #32	2 btls	MLML 66-05.89S	172-05.26W	g	COOK19MV
0350	120202	0	HCGF	E	trace metals	150m	MLML 66-05.89S	172-05.26W	g	COOK19MV
2104	120202	0	HCGF	B	Go Flo #33	2 btls	MLML 66-01.98S	170-59.86W	g	COOK19MV
2119	120202	0	HCGF	E	trace metals	40m	MLML 66-02.03S	170-59.92W	g	COOK19MV
2328	120202	0	HCGF	B	Go Flo #34	2 btls	MLML 66-02.03S	170-59.92W	g	COOK19MV
2355	120202	0	HCGF	E	trace metals	110m	MLML 66-02.03S	170-59.92W	g	COOK19MV
0403	130202	0	HCGF	B	GO FLO #35	2 btls	MLML 66-02.03S	170-59.92W	g	COOK19MV
0424	130202	0	HCGF	E	trace metals	150m	MLML 66-02.03S	170-59.92W	g	COOK19MV
1908	130202	0	HCGF	B	Go Flo #36	2 btls	MLML 65-59.92S	172-41.55W	g	COOK19MV
1912	130202	0	HCGF	E	trace metals	25m	MLML 65-59.92S	172-41.57W	g	COOK19MV

#GMT	DDMMYY	SAMP	B	SAMPLE	DISP				p	CRUISE
#TIME	DATE	TZ	CODE	E IDENTIFIER	CODE	LATITUDE	LONGITUDE		c	LEG-SHIP
1915	130202	0	HCGF	B Go Flo #37	2 btls	MLML	65-59.92S	172-41.56W	g	COOK19MV
1918	130202	0	HCGF	E trace metals	25m	MLML	65-59.92S	172-41.57W	g	COOK19MV
2103	140202	0	HCGF	B Go Flo #38	2 btls	MLML	65-57.09S	172-11.25W	g	COOK19MV
2115	140202	0	HCGF	E trace metals	60m	MLML	65-57.09S	172-11.26W	g	COOK19MV
2300	140202	0	HCGF	B Go Flo #39	2 btls	MLML	65-57.07S	172-11.33W	g	COOK19MV
2328	140202	0	HCGF	E trace metals	100m	MLML	65-57.07S	172-11.33W	g	COOK19MV
0416	150202	0	HCGF	B GO FLO #40	2 btls	MLML	65-57.08S	172-11.34W	g	COOK19MV
0437	150202	0	HCGF	E trace metals	150m	MLML	65-57.08S	172-11.34W	g	COOK19MV
2336	190202	0	HCGF	B Go Flo #41	2 btls	MLML	52-23.12S	166-56.82W	g	COOK19MV
2357	190202	0	HCGF	E trace metals	40m	MLML	52-23.12S	166-56.82W	g	COOK19MV
0200	200202	0	HCGF	B Go Flo #42	2 btls	MLML	52-24.25S	166-56.55W	g	COOK19MV
0227	200202	0	HCGF	E trace metals	100m	MLML	52-25.13S	166-56.33W	g	COOK19MV
0608	200202	0	HCGF	B GO FLO #43	2 btls	MLML	52-31.83S	166-56.90W	g	COOK19MV
0638	200202	0	HCGF	E trace metals	150m	MLML	52-32.83S	166-56.80W	g	COOK19MV
2115	200202	0	HCGF	B Go Flo #44	2 btls	MLML	52-53.06S	167-27.17W	g	COOK19MV
2133	200202	0	HCGF	E trace metals	40m	MLML	52-52.93S	167-26.94W	g	COOK19MV
0000	210202	0	HCGF	B Go Flo #45	2 btls	MLML	52-51.90S	167-26.43W	g	COOK19MV
0031	210202	0	HCGF	E trace metals	100m	MLML	52-51.64S	167-26.20W	g	COOK19MV
0448	210202	0	HCGF	B GOFLO #41	2 btls	MLML	52-50.46S	167-24.01W	g	COOK19MV
0514	210202	0	HCGF	E trace metals	50m	MLML	52-50.60S	167-23.60W	g	COOK19MV

**** Pumps ****

**** Data shared between UHI and WHOI ****

0529	240102	0	PMXX	B THORIUM/BIOMARKER #1	WHOI	55-23.63S	171-24.80W	g	COOK19MV
0745	240102	0	PMXX	E Lipid Biomarkers	65m WHOI	55-19.99S	171-24.53W	g	COOK19MV
0829	250102	0	PMXX	B THOR/BIO PUMP #02	UHI	55-14.21S	171-41.28W	g	COOK19MV
1055	250102	0	PMXX	E Lipid Biomarkers	65m UHI	55-11.28S	171-38.53W	g	COOK19MV
0927	290102	0	PMXX	B THOR/BIO PUMP #03	WHOI	66-20.12S	171-57.59W	g	COOK19MV
1104	290102	0	PMXX	E Lipid Biomarkers	75m WHOI	66-20.12S	171-57.59W	g	COOK19MV
2230	290102	0	PMXX	B THOR/BIO PUMP #04	UHI	66-20.10S	171-57.80W	g	COOK19MV
0105	300102	0	PMXX	E Lipid Biomarkers	55m UHI	66-20.22S	171-57.72W	g	COOK19MV
0808	310102	0	PMXX	B THOR/BIO PUMP #05	WHOI	66-36.69S	171-49.14W	g	COOK19MV
1043	310102	0	PMXX	E Lipid Biomarkers	70m WHOI	66-36.69S	171-49.14W	g	COOK19MV
0220	010202	0	PMXX	B THOR/BIO PUMP #06	UHI	66-18.23S	171-55.64W	g	COOK19MV
0457	010202	0	PMXX	E Lipid Biomarkers	70m UHI	66-18.23S	171-55.65W	g	COOK19MV
0308	020202	0	PMXX	B THOR/BIO PUMP #07	WHOI	66-35.36S	172-13.69W	g	COOK19MV
0533	020202	0	PMXX	E Lipid Biomarkers	55m WHOI	66-35.29S	172-14.02W	g	COOK19MV

#GMT	DDMMYY	SAMP	B	SAMPLE	DISP			p	CRUISE
#TIME	DATE	TZ	CODE	E IDENTIFIER	CODE	LATITUDE	LONGITUDE	c	LEG-SHIP
#									
0239	040202	0	PMXX	B THOR/BIO PUMP #08	UHI	66-15.21S	171-57.65W	g	COOK19MV
0516	040202	0	PMXX	E Lipid Biomarkers 67m	UHI	66-13.55S	171-59.66W	g	COOK19MV
0150	050202	0	PMXX	B THOR/BIO PUMP #09	WHOI	66-17.30S	172-07.96W	g	COOK19MV
0455	050202	0	PMXX	E Lipid Biomarkers 70m	WHOI	66-16.99S	172-06.22W	g	COOK19MV
0020	060202	0	PMXX	B THOR/BIO PUMP #10	UHI	66-19.07S	171-23.36W	g	COOK19MV
0300	060202	0	PMXX	E Lipid Biomarkers 85m	UHI	66-19.08S	171-23.39W	g	COOK19MV
0457	060202	0	PMXX	B THOR/BIO PUMP #11	WHOI	66-19.05S	171-23.36W	g	COOK19MV
0712	060202	0	PMXX	E Lipid Biomarkers 70m	WHOI	66-18.98S	171-23.16W	g	COOK19MV
0021	090202	0	PMXX	B THOR/BIO PUMP #12	UHI	66-12.15S	172-05.42W	g	COOK19MV
0305	090202	0	PMXX	E Lipid Biomarkers 70m	UHI	66-10.95S	172-04.05W	g	COOK19MV
0014	120202	0	PMXX	B THOR/BIO PUMP #13	WHOI	66-06.13S	172-03.90W	g	COOK19MV
0250	120202	0	PMXX	E Lipid Biomarkers 80m	WHOI	66-05.89S	172-05.26W	g	COOK19MV
0110	130202	0	PMXX	B THOR/BIO PUMP #14	UHI	66-02.03S	170-59.93W	g	COOK19MV
0350	130202	0	PMXX	E Lipid Biomarkers 80m	UHI	66-02.03S	170-59.92W	g	COOK19MV
0026	150202	0	PMXX	B THOR/BIO PUMP #15	WHOI	65-57.08S	172-11.34W	g	COOK19MV
0255	150202	0	PMXX	E Lipid Biomarkers 75m	WHOI	65-57.08S	172-11.33W	g	COOK19MV
0316	200202	0	PMXX	B THOR/BIO PUMPS #16	UHI	52-26.64S	166-56.41W	g	COOK19MV
0603	200202	0	PMXX	E Lipid Biomarkers 80m	UHI	52-31.67S	166-56.90W	g	COOK19MV
0145	210202	0	PMXX	B THOR/BIO PUMPS #17	MLML	52-50.74S	167-25.42W	g	COOK19MV
0437	210202	0	PMXX	E Lipid Biomarkers 50m	MLML	52-50.39S	167-24.18W	g	COOK19MV

*** Surface Nets ***

0554	250102	0	SNXX	B 22 v plankton	MLML	55-15.30S	171-44.46W	g	COOK19MV
0558	250102	0	SNXX	E diversity	10m MLML	55-15.31S	171-44.39W	g	COOK19MV
1118	290102	0	SNXX	B 22 v plankton	MLML	66-20.12S	171-57.59W	g	COOK19MV
1123	290102	0	SNXX	E diversity	10m MLML	66-20.12S	171-57.59W	g	COOK19MV
0933	310102	0	SNXX	B 22 v plankton	MLML	66-36.69S	171-49.14W	g	COOK19MV
0937	310102	0	SNXX	E diversity	10m MLML	66-36.69S	171-49.15W	g	COOK19MV
0134	020202	0	SNXX	B 22 v plankton	MLML	66-35.62S	172-13.29W	g	COOK19MV
0138	020202	0	SNXX	E diversity	10m MLML	66-35.62S	172-13.28W	g	COOK19MV
0403	050202	0	SNXX	B 22 v plankton	MLML	66-17.11S	172-06.54W	g	COOK19MV
0410	050202	0	SNXX	E diversity	10m MLML	66-17.11S	172-06.56W	g	COOK19MV
0518	060202	0	SNXX	B 22 v plankton	MLML	66-19.04S	171-23.29W	g	COOK19MV
0523	060202	0	SNXX	E diversity	10m MLML	66-19.01S	171-23.22W	g	COOK19MV

#GMT	DDMMYY	SAMP	B	SAMPLE	DISP				p	CRUISE
#TIME	DATE	TZ	CODE	E IDENTIFIER	CODE	LATITUDE	LONGITUDE		c	LEG-SHIP
#										
0201	090202	0	SNXX	B 22 v plankton	MLML	66-11.48S	172-04.28W	g		COOK19MV
0205	090202	0	SNXX	E diversity	10m MLML	66-11.45S	172-04.25W	g		COOK19MV
0050	120202	0	SNXX	B 22 v plankton	MLML	66-06.13S	172-03.91W	g		COOK19MV
0054	120202	0	SNXX	E diversity	10m MLML	66-06.13S	172-03.91W	g		COOK19MV
0610	130202	0	SNXX	B Hand phytoplankton	MLML	66-02.03S	170-59.92W	g		COOK19MV
0614	130202	0	SNXX	E tow on deck	MLML	66-02.03S	170-59.92W	g		COOK19MV
0151	200202	0	SNXX	B 22 v plankton	MLML	52-23.96S	166-56.67W	g		COOK19MV
0154	200202	0	SNXX	E diversity	10m MLML	52-24.05S	166-56.60W	g		COOK19MV
0335	210202	0	SNXX	B 22 v plankton	MLML	52-50.36S	167-24.86W	g		COOK19MV
0345	210202	0	SNXX	E diversity	10m MLML	52-50.31S	167-24.79W	g		COOK19MV

*** Conductivity, Temperature, Depth ***

2159	210102	0	TDCT	B CTD Test 12 btl	MLML	53-34.48S	175-13.56W	g		COOK19MV
2250	210102	0	TDCT	E TSON	200m MLML	53-33.76S	175-12.25W	g		COOK19MV
0424	230102	0	TDCT	B CTD #02 12 btl	300m MLML	55-24.06S	171-28.72W	g		COOK19MV
0525	230102	0	TDCT	E TSO I G	B MLML	55-23.64S	171-29.11W	g		COOK19MV
2315	230102	0	TDCT	B CTD #03 12 btl	300m MLML	55-20.04S	171-31.90W	g		COOK19MV
0026	240102	0	TDCT	E TSO I G	B MLML	55-20.11S	171-30.73W	g		COOK19MV
0337	240102	0	TDCT	B CTD #04 12 btl	200m MLML	55-18.96S	171-26.33W	g		COOK19MV
0430	240102	0	TDCT	E TSO PQ	B MLML	55-18.43S	171-25.37W	g		COOK19MV
1236	240102	0	TDCT	B CTD #05 12 btl	200m MLML	55-19.98S	171-23.17W	g		COOK19MV
1419	240102	0	TDCT	E TSO C & N Isotopes	MLML	55-19.98S	171-23.10W	g		COOK19MV
2325	240102	0	TDCT	B CTD #06 12 btl	300m MLML	55-17.01S	171-45.39W	g		COOK19MV
0050	250102	0	TDCT	E TSO I G	B MLML	55-16.36S	171-45.52W	g		COOK19MV
0250	250102	0	TDCT	B CTD #07 12 btl	200m MLML	55-15.54S	171-45.98W	g		COOK19MV
0348	250102	0	TDCT	E TSO PQ	B MLML	55-15.41S	171-45.89W	g		COOK19MV
0725	250102	0	TDCT	B CTD #08 12 btl	100m MLML	55-15.13S	171-42.45W	g		COOK19MV
0804	250102	0	TDCT	E TSO C & N Isotopes	MLML	55-14.49S	171-41.80W	g		COOK19MV
0545	290102	0	TDCT	B CTD #09 12 btl	300m MLML	66-20.12S	171-57.51W	g		COOK19MV
0653	290102	0	TDCT	E TSO I G	B MLML	66-20.12S	171-57.52W	g		COOK19MV
0824	290102	0	TDCT	B CTD #10 12 btl	200m MLML	66-20.12S	171-57.58W	g		COOK19MV
0913	290102	0	TDCT	E TSO PQ	B MLML	66-20.12S	171-57.58W	g		COOK19MV
1133	290102	0	TDCT	B CTD #11 12 btl	200m MLML	66-20.12S	171-57.59W	g		COOK19MV
1237	290102	0	TDCT	E TSO PQ	B MLML	66-20.12S	171-57.59W	g		COOK19MV
1914	290102	0	TDCT	B CTD #12 12 btl	300m MLML	66-20.10S	171-57.80W	g		COOK19MV
2007	290102	0	TDCT	E TSO I G	B MLML	66-20.10S	171-57.79W	g		COOK19MV

#GMT #TIME #	DDMMYY DATE	TZ	SAMP CODE	B E	SAMPLE IDENTIFIER	DISP CODE	LATITUDE	LONGITUDE	p c	CRUISE LEG-SHIP
2207	290102	0	TDCT	B	CTD #13 12 btl	84m MLML	66-20.10S	171-57.80W	g	COOK19MV
2238	290102	0	TDCT	E	TSO PQ	B MLML	66-20.10S	171-57.80W	g	COOK19MV
0032	310102	0	TDCT	B	CTD #14 12 btl	300m MLML	66-36.23S	171-46.97W	g	COOK19MV
0145	310102	0	TDCT	E	TSO I G	B MLML	66-36.37S	171-47.35W	g	COOK19MV
0350	310102	0	TDCT	B	CTD #15 12 btl	200m MLML	66-36.69S	171-49.14W	g	COOK19MV
0438	310102	0	TDCT	E	TSO PQ	B MLML	66-36.69S	171-49.14W	g	COOK19MV
0643	310102	0	TDCT	B	CTD #16 12 btl	100m MLML	66-36.69S	171-49.14W	g	COOK19MV
0723	310102	0	TDCT	E	TSO C & N Isotopes	MLML	66-36.69S	171-49.14W	g	COOK19MV
1908	310102	0	TDCT	B	CTD #17 12 btl	300m MLML	66-19.21S	171-54.92W	g	COOK19MV
1957	310102	0	TDCT	E	TSO I G	B MLML	66-19.21S	171-54.93W	g	COOK19MV
2140	310102	0	TDCT	B	CTD #18 12 btl	200m MLML	66-19.17S	171-54.89W	g	COOK19MV
2228	310102	0	TDCT	E	TSO PQ	B MLML	66-18.67S	171-54.51W	g	COOK19MV
0022	010202	0	TDCT	B	CTD #19 12 btl	200m MLML	66-18.23S	171-55.66W	g	COOK19MV
0107	010202	0	TDCT	E	TSO C & N Isotopes	MLML	66-18.23S	171-55.65W	g	COOK19MV
1939	010202	0	TDCT	B	CTD #20 12 btl	300m MLML	66-35.60S	172-12.00W	g	COOK19MV
2033	010202	0	TDCT	E	TSO I G	B MLML	66-35.60S	172-12.01W	g	COOK19MV
2134	010202	0	TDCT	B	CTD #21 12 btl	200m MLML	66-35.60S	172-12.00W	g	COOK19MV
2226	010202	0	TDCT	E	TSO PQ	B MLML	66-35.60S	172-12.00W	g	COOK19MV
0025	020202	0	TDCT	B	CTD #22 12 btl	200m MLML	66-35.62S	172-12.05W	g	COOK19MV
0114	020202	0	TDCT	E	TSO C & N Isotopes	MLML	66-35.62S	172-12.04W	g	COOK19MV
1912	020202	0	TDCT	B	CTD #23 12 btl	150m MLML	65-53.27S	171-22.68W	g	COOK19MV
1951	020202	0	TDCT	E	TSO I G	B MLML	65-53.27S	171-22.68W	g	COOK19MV
2250	020202	0	TDCT	B	CTD #24 12 btl	150m MLML	66-03.85S	171-34.31W	g	COOK19MV
2332	020202	0	TDCT	E	TSO I G	B MLML	66-03.85S	171-34.31W	g	COOK19MV
0148	030202	0	TDCT	B	CTD #25 12 btl	150m MLML	66-08.57S	171-40.63W	g	COOK19MV
0238	030202	0	TDCT	E	TSO I G	B MLML	66-08.57S	171-40.62W	g	COOK19MV
0432	030202	0	TDCT	B	CTD #26 12 btl	150m MLML	66-12.32S	171-48.22W	g	COOK19MV
0520	030202	0	TDCT	E	TSO I G	B MLML	66-12.32S	171-48.23W	g	COOK19MV
0648	030202	0	TDCT	B	CTD #27 12 btl	150m MLML	66-14.29S	171-51.11W	g	COOK19MV
0739	030202	0	TDCT	E	TSO I G	B MLML	66-14.27S	171-51.11W	g	COOK19MV
0905	030202	0	TDCT	B	CTD #28 12 btl	150m MLML	66-16.16S	171-54.01W	g	COOK19MV
0954	030202	0	TDCT	E	CTD #28 on	150m MLML	66-16.17S	171-54.01W	g	COOK19MV
1125	030202	0	TDCT	B	CTD #29 12 btl	150m MLML	66-18.02S	171-57.23W	g	COOK19MV
1215	030202	0	TDCT	E	TSO I G	B MLML	66-18.02S	171-57.24W	g	COOK19MV
2041	030202	0	TDCT	B	CTD #30 12 btl	300m MLML	66-17.76S	171-57.46W	g	COOK19MV
2154	030202	0	TDCT	E	TSO I G	B MLML	66-18.27S	171-56.97W	g	COOK19MV

#GMT	DDMMYY	TZ	SAMP B	SAMPLE	DISP	LATITUDE	LONGITUDE	p	CRUISE
#TIME	DATE		CODE E	IDENTIFIER	CODE			c	LEG-SHIP
2350	030202	0	TDCT B	CTD #31 12 btl 200m	MLML	66-15.58S	171-57.84W	g	COOK19MV
0034	040202	0	TDCT E	TSO PQ B	MLML	66-15.57S	171-57.84W	g	COOK19MV
0626	040202	0	TDCT B	CTD #32 12 btl 200m	MLML	66-14.43S	172-01.88W	g	COOK19MV
0724	040202	0	TDCT E	TSO C & N Isotopes	MLML	66-14.42S	172-01.88W	g	COOK19MV
1950	040202	0	TDCT B	CTD #33 12 btl 300m	MLML	66-16.26S	172-06.77W	g	COOK19MV
2056	040202	0	TDCT E	TSO I G B	MLML	66-16.52S	172-08.03W	g	COOK19MV
2214	040202	0	TDCT B	CTD #34 12 btl 200m	MLML	66-16.53S	172-08.05W	g	COOK19MV
2315	040202	0	TDCT E	TSO PQ B	MLML	66-16.95S	172-08.11W	g	COOK19MV
0606	050202	0	TDCT B	CTD #35 12 btl 200m	MLML	66-16.47S	172-03.18W	g	COOK19MV
0712	050202	0	TDCT E	TSO C & N Isotopes	MLML	66-16.43S	172-03.12W	g	COOK19MV
1906	050202	0	TDCT B	CTD #36 12 btl 300m	MLML	66-18.68S	171-22.40W	g	COOK19MV
2007	050202	0	TDCT E	TSO PQ B	MLML	66-18.68S	171-22.40W	g	COOK19MV
2115	050202	0	TDCT B	CTD #37 12 btl 200m	MLML	66-18.68S	171-22.41W	g	COOK19MV
2210	050202	0	TDCT E	TSO PQ B	MLML	66-18.68S	171-22.41W	g	COOK19MV
0353	060202	0	TDCT B	CTD #38 12 btl 200m	MLML	66-19.07S	171-23.36W	g	COOK19MV
0445	060202	0	TDCT E	TSO C & N Isotopes	MLML	66-19.06S	171-23.36W	g	COOK19MV
0755	060202	0	TDCT B	CTD #39 12 btl 1000m	MLML	66-18.69S	171-23.29W	g	COOK19MV
0926	060202	0	TDCT E	TSO C & N Isotopes	MLML	66-18.68S	171-23.29W	g	COOK19MV
2302	060202	0	TDCT B	CTD #40 12 btl 300m	MLML	66-13.66S	171-51.26W	g	COOK19MV
2334	060202	0	TDCT X		MLML	66-11.40S	171-57.13W	g	COOK19MV
0543	080202	0	TDCT B	CTD #41 12 btl 300m	MLML	66-14.00S	172-06.84W	g	COOK19MV
0649	080202	0	TDCT E	TSO I G B	MLML	66-14.35S	172-07.15W	g	COOK19MV
0748	080202	0	TDCT B	CTD #42 12 btl 200m	MLML	66-14.40S	172-07.21W	g	COOK19MV
0848	080202	0	TDCT E	TSO PQ B	MLML	66-14.47S	172-07.34W	g	COOK19MV
0926	080202	0	TDCT B	CTD #43 12 btl 200m	MLML	66-14.47S	172-07.34W	g	COOK19MV
1020	080202	0	TDCT E	TSO C & N Isotopes	MLML	66-14.27S	172-07.50W	g	COOK19MV
1903	080202	0	TDCT B	CTD #44 12 btl 300m	MLML	66-10.43S	172-13.00W	g	COOK19MV
1957	080202	0	TDCT E	TSO I G B	MLML	66-10.34S	172-12.80W	g	COOK19MV
2155	080202	0	TDCT B	CTD #45 12 btl 200m	MLML	66-12.27S	172-09.83W	g	COOK19MV
2248	080202	0	TDCT E	TSO PQ B	MLML	66-12.28S	172-09.80W	g	COOK19MV
1941	090202	0	TDCT B	CTD #46 12 btl 150m	MLML	66-10.06S	172-05.24W	g	COOK19MV
2040	090202	0	TDCT E	TSO I G B	MLML	66-10.06S	172-05.24W	g	COOK19MV
2223	090202	0	TDCT B	CTD #47 12 btl 125m	MLML	66-07.57S	172-04.66W	g	COOK19MV
2314	090202	0	TDCT E	TSO I G B	MLML	66-07.56S	172-04.67W	g	COOK19MV
0020	100202	0	TDCT B	CTD #48 12 btl 125m	MLML	66-04.76S	172-04.42W	g	COOK19MV
0104	100202	0	TDCT E	TSO I G B	MLML	66-04.76S	172-04.42W	g	COOK19MV
0158	100202	0	TDCT B	CTD #49 12 btl 125m	MLML	66-02.32S	172-02.78W	g	COOK19MV
0242	100202	0	TDCT E	TSO I G B	MLML	66-02.32S	172-02.77W	g	COOK19MV

#GMT #TIME #	DDMMYY DATE	TZ	SAMP CODE	B E	SAMPLE IDENTIFIER	DISP CODE	LATITUDE	LONGITUDE	p c	CRUISE LEG-SHIP
0352	100202	0	TDCT	B	CTD #50	12 btl 125m	MLML 65-59.48S	172-02.77W	g	COOK19MV
0558	100202	0	TDCT	E	TSO I	G B	MLML 65-58.69S	172-02.90W	g	COOK19MV
2009	100202	0	TDCT	B	CTD #51	12 btl 125m	MLML 66-08.32S	172-00.87W	g	COOK19MV
2100	100202	0	TDCT	E	TSO I	G B	MLML 66-08.32S	172-00.87W	g	COOK19MV
2215	100202	0	TDCT	B	CTD #52	12 btl 125m	MLML 66-10.98S	172-02.74W	g	COOK19MV
2312	100202	0	TDCT	E	TSO I	G B	MLML 66-10.98S	172-02.75W	g	COOK19MV
0143	110202	0	TDCT	B	CTD #53	12 btl 125m	MLML 66-16.13S	172-00.72W	g	COOK19MV
0235	110202	0	TDCT	E	TSO I	G B	MLML 66-15.93S	171-59.96W	g	COOK19MV
1918	110202	0	TDCT	B	CTD #54	12 btl 300m	MLML 66-06.13S	172-03.90W	g	COOK19MV
2021	110202	0	TDCT	E	TSO I	G B	MLML 66-06.13S	172-03.90W	g	COOK19MV
2142	110202	0	TDCT	B	CTD #55	12 btl 200m	MLML 66-06.13S	172-03.91W	g	COOK19MV
2300	110202	0	TDCT	E	TSO PQ	B	MLML 66-06.13S	172-03.90W	g	COOK19MV
0354	120202	0	TDCT	B	CTD #56	12 btl 200m	MLML 66-05.89S	172-05.27W	g	COOK19MV
0459	120202	0	TDCT	E	TSO C & N Isotopes		MLML 66-05.89S	172-05.25W	g	COOK19MV
1914	120202	0	TDCT	B	CTD #57	12 btl 200m	MLML 66-01.98S	170-59.85W	g	COOK19MV
2014	120202	0	TDCT	E	TSO I	G B	MLML 66-01.98S	170-59.85W	g	COOK19MV
2128	120202	0	TDCT	B	CTD #58	12 btl 200m	MLML 66-02.03S	170-59.92W	g	COOK19MV
2226	120202	0	TDCT	E	TSO PQ	B	MLML 66-02.03S	170-59.92W	g	COOK19MV
0444	130202	0	TDCT	B	CTD #59	12 btl 150m	MLML 66-02.03S	170-59.92W	g	COOK19MV
0545	130202	0	TDCT	E	TSO C & N Isotopes		MLML 66-02.03S	170-59.92W	g	COOK19MV
1807	130202	0	TDCT	B	CTD #60	12 btl 150m	MLML 65-59.93S	172-41.58W	g	COOK19MV
1902	130202	0	TDCT	E	CTD #60	150m	MLML 65-59.92S	172-41.56W	g	COOK19MV
2017	130202	0	TDCT	B	CTD #61	12 btl 150m	MLML 65-59.93S	172-28.27W	g	COOK19MV
2057	130202	0	TDCT	E	TSO I PQG	B	MLML 65-59.93S	172-28.25W	g	COOK19MV
2154	130202	0	TDCT	B	CTD #62	12 btl 150m	MLML 65-59.94S	172-14.91W	g	COOK19MV
2244	130202	0	TDCT	E	TSO I PQG	B	MLML 65-59.94S	172-14.90W	g	COOK19MV
2337	130202	0	TDCT	B	CTD #63	12 btl 150m	MLML 66-01.00S	172-01.33W	g	COOK19MV
0041	140202	0	TDCT	E	TSO I PQG	B	MLML 66-01.00S	172-01.33W	g	COOK19MV
0318	140202	0	TDCT	B	CTD #64	12 btl 150m	MLML 66-07.02S	172-05.24W	g	COOK19MV
0404	140202	0	TDCT	E	TSO I PQG	B	MLML 66-07.02S	172-05.25W	g	COOK19MV
0730	140202	0	TDCT	B	CTD #65	12 btl 150m	MLML 66-07.07S	172-17.89W	g	COOK19MV
0819	140202	0	TDCT	E	TSO I PQG	B	MLML 66-07.07S	172-17.89W	g	COOK19MV
1925	140202	0	TDCT	B	CTD #66	12 btl 300m	MLML 65-57.09S	172-11.24W	g	COOK19MV
2024	140202	0	TDCT	E	TSO I	G B	MLML 65-57.09S	172-11.25W	g	COOK19MV
2123	140202	0	TDCT	B	CTD #67	12 btl 075m	MLML 65-57.09S	172-11.25W	g	COOK19MV
2206	140202	0	TDCT	E	TSO PQ	B	MLML 65-57.07S	172-11.33W	g	COOK19MV
0307	150202	0	TDCT	B	CTD #68	12 btl 200m	MLML 65-57.08S	172-11.33W	g	COOK19MV
0404	150202	0	TDCT	E	TSO C & N Isotopes		MLML 65-57.08S	172-11.34W	g	COOK19MV

#GMT #TIME #	DDMMYY DATE	SAMP TZ	B CODE	SAMPLE E IDENTIFIER	DISP CODE	LATITUDE	LONGITUDE	p c	CRUISE LEG-SHIP
0500	150202	0	TDCT	B CTD #69 12 bt1 200m	MLML	65-57.08S	172-11.34W	g	COOK19MV
0558	150202	0	TDCT	E TSO I PQG B	MLML	65-57.07S	172-11.34W	g	COOK19MV
2126	190202	0	TDCT	B CTD #70 12 bt1 300m	MLML	52-23.12S	166-56.82W	g	COOK19MV
2229	190202	0	TDCT	E TSO I G B	MLML	52-23.12S	166-56.82W	g	COOK19MV
0005	200202	0	TDCT	B CTD #71 12 bt1 210m	MLML	52-23.12S	166-56.82W	g	COOK19MV
0104	200202	0	TDCT	E TSO PQ B	MLML	52-23.16S	166-56.79W	g	COOK19MV
0641	200202	0	TDCT	B CTD #72 12 bt1 200m	MLML	52-32.93S	166-56.80W	g	COOK19MV
0737	200202	0	TDCT	E TSO I PQG B	MLML	52-34.62S	166-57.18W	g	COOK19MV
1933	200202	0	TDCT	B CTD #73 12 bt1 300m	MLML	52-53.05S	167-27.17W	g	COOK19MV
2030	200202	0	TDCT	E TSO I G B	MLML	52-53.06S	167-27.17W	g	COOK19MV
2144	200202	0	TDCT	B CTD #74 12 bt1 200m	MLML	52-52.95S	167-26.65W	g	COOK19MV
2245	200202	0	TDCT	E TSO PQ B	MLML	52-52.75S	167-25.45W	g	COOK19MV
0520	210202	0	TDCT	B CTD #75 12 bt1 200m	MLML	52-50.62S	167-23.52W	g	COOK19MV
0628	210202	0	TDCT	E TSO C & N Isotopes	MLML	52-50.77S	167-22.64W	g	COOK19MV
0804	210202	0	TDCT	B CTD #76 12 bt1 1500m	MLML	52-51.44S	167-21.25W	g	COOK19MV
1000	210202	0	TDCT	E Thorium control	MLML	52-52.12S	167-19.10W	g	COOK19MV
1105	210202	0	TDCT	B CTD #77 12 bt1 300m	MLML	52-52.27S	167-09.01W	g	COOK19MV
1205	210202	0	TDCT	E TSO I G B	MLML	52-52.72S	167-07.90W	g	COOK19MV
1335	210202	0	TDCT	B CTD #78 12 bt1 300m	MLML	52-52.87S	167-25.51W	g	COOK19MV
1435	210202	0	TDCT	E TSO PQ B	MLML	52-52.14S	167-25.23W	g	COOK19MV
1501	210202	0	TDCT	B CTD #79 12 bt1 040m	MLML	52-52.03S	167-24.98W	g	COOK19MV
1527	210202	0	TDCT	E TSO C & N Isotopes	MLML	52-51.81S	167-25.22W	g	COOK19MV
2159	210202	0	TDCT	B CTD Test 12 bt1	MLML	52-09.29S	169-05.16W	g	COOK19MV
2250	210202	0	TDCT	E TSON 200m	MLML	52-03.69S	169-17.87W	g	COOK19MV

*** Conductivity, Temperature, Depth ***

0145	240102	0	TDXX	B TM #1 8 btls	152m	MLML	55-19.76S	171-29.55W	g	COOK19MV
0217	240102	0	TDXX	E TSON QGH AN 15	MLML	55-19.61S	171-28.64W	g	COOK19MV	
1119	240102	0	TDXX	B TM #2 8 btls	041m	MLML	55-19.22S	171-24.76W	g	COOK19MV
1137	240102	0	TDXX	E TSO PQGH	MLML	55-19.49S	171-24.20W	g	COOK19MV	
1508	240102	0	TDXX	B TM #3 8 btls	027m	MLML	55-20.11S	171-22.99W	g	COOK19MV
1534	240102	0	TDXX	E TSO L	MLML	55-20.27S	171-23.00W	g	COOK19MV	
0115	250102	0	TDXX	B TM #4 8 btls	163m	MLML	55-16.03S	171-45.59W	g	COOK19MV
0150	250102	0	TDXX	E TSON QGH AN 15	MLML	55-15.82S	171-45.70W	g	COOK19MV	
0412	250102	0	TDXX	B TM #5 8 btls	046m	MLML	55-15.35S	171-45.72W	g	COOK19MV
0434	250102	0	TDXX	E TSO PQGH	MLML	55-15.22S	171-45.57W	g	COOK19MV	
0600	250102	0	TDXX	B TM #6 8 btls	28m	MLML	55-15.31S	171-44.36W	g	COOK19MV
0654	250102	0	TDXX	E TSO L	MLML	55-15.36S	171-43.32W	g	COOK19MV	

#GMT	DDMMYY	SAMP	B	SAMPLE	DISP				p	CRUISE
#TIME	DATE	TZ	CODE	E IDENTIFIER	CODE	LATITUDE	LONGITUDE		c	LEG-SHIP
#										
2100	290102	0	TDXX	B TM #7	8 btls 126m	MLML	66-20.10S	171-57.80W	g	COOK19MV
2128	290102	0	TDXX	E TSON	QGH AN 15	MLML	66-20.10S	171-57.81W	g	COOK19MV
0122	300102	0	TDXX	B TM #8	8 btls 127m	MLML	66-20.22S	171-57.72W	g	COOK19MV
0150	300102	0	TDXX	E TSO	PQGH	MLML	66-20.12S	171-57.64W	g	COOK19MV
0332	300102	0	TDXX	B TM #9	8 btls 030m	MLML	66-20.04S	171-57.64W	g	COOK19MV
0346	300102	0	TDXX	B TSO	L	MLML	66-20.04S	171-57.64W	g	COOK19MV
0523	300102	0	TDXX	B TM #10	8 btls 030m	MLML	66-20.04S	171-57.64W	g	COOK19MV
0539	300102	0	TDXX	E TSO	L	MLML	66-20.04S	171-57.64W	g	COOK19MV
0301	310102	0	TDXX	B TM #11	8 btls 160m	MLML	66-36.69S	171-49.14W	g	COOK19MV
0333	310102	0	TDXX	E TSON	QGH AN 15	MLML	66-36.69S	171-49.14W	g	COOK19MV
0536	310102	0	TDXX	B TM #12	8 btls 042m	MLML	66-36.69S	171-49.14W	g	COOK19MV
0555	310102	0	TDXX	E TSO	PQGH	MLML	66-36.69S	171-49.14W	g	COOK19MV
0741	310102	0	TDXX	B TM #13	8 btls 030m	MLML	66-36.69S	171-49.14W	g	COOK19MV
0752	310102	0	TDXX	E TSO	L	MLML	66-36.69S	171-49.14W	g	COOK19MV
2010	310102	0	TDXX	B TM #14	8 btls 132m	MLML	66-19.21S	171-54.93W	g	COOK19MV
2037	310102	0	TDXX	E TSON	QGH AN 15	MLML	66-19.20S	171-54.93W	g	COOK19MV
2300	310102	0	TDXX	B TM #15	8 btls 035m	MLML	66-18.16S	171-55.51W	g	COOK19MV
2318	310102	0	TDXX	E TSO	PQGH	MLML	66-18.17S	171-55.52W	g	COOK19MV
1605	010202	0	TDXX	B TM #16	8 btls 023m	MLML	66-19.51S	171-59.57W	g	COOK19MV
1615	010202	0	TDXX	E TSO	L	MLML	66-19.51S	171-59.57W	g	COOK19MV
2045	010202	0	TDXX	B TM #17	8 btls	MLML	66-35.60S	172-12.01W	g	COOK19MV
2111	010202	0	TDXX	E TSON	QGH AN 15	MLML	66-35.60S	172-12.00W	g	COOK19MV
2304	010202	0	TDXX	B TM #18	8 btls 033m	MLML	66-35.62S	172-12.05W	g	COOK19MV
2320	010202	0	TDXX	E TSO	PQGH	MLML	66-35.62S	172-12.05W	g	COOK19MV
0231	020202	0	TDXX	B TM #19	8 btls 023m	MLML	66-35.36S	172-13.70W	g	COOK19MV
0245	020202	0	TDXX	E TSO	L	MLML	66-35.36S	172-13.69W	g	COOK19MV
1834	020202	0	TDXX	B TM #20	8 btls 151m	MLML	65-53.27S	171-22.68W	g	COOK19MV
1858	020202	0	TDXX	E TSON	QGH AN 15	MLML	65-53.27S	171-22.69W	g	COOK19MV
2130	020202	0	TDXX	B TM #21	8 btls 150m	MLML	66-02.15S	171-24.57W	g	COOK19MV
2227	020202	0	TDXX	E TSON	QGH AN 15	MLML	66-03.85S	171-34.30W	g	COOK19MV
0115	030202	0	TDXX	B TM #22	8 btls 150m	MLML	66-08.57S	171-40.62W	g	COOK19MV
0140	030202	0	TDXX	E TSON	QGH AN 15	MLML	66-08.57S	171-40.63W	g	COOK19MV
0409	030202	0	TDXX	B TM #23	8 btls 150m	MLML	66-12.32S	171-48.21W	g	COOK19MV
0429	030202	0	TDXX	E TSON	QGH AN 15	MLML	66-12.32S	171-48.22W	g	COOK19MV
0622	030202	0	TDXX	B TM #24	8 btls 152m	MLML	66-14.24S	171-51.04W	g	COOK19MV
0645	030202	0	TDXX	E TSON	QGH AN 15	MLML	66-14.29S	171-51.10W	g	COOK19MV
0839	030202	0	TDXX	B TM #25	8 btls 150m	MLML	66-16.16S	171-54.01W	g	COOK19MV
0901	030202	0	TDXX	E TSON	QGH AN 15	MLML	66-16.17S	171-54.01W	g	COOK19MV

#GMT	DDMMYY	SAMP	B	SAMPLE	DISP				p	CRUISE
#TIME	DATE	TZ	CODE	E IDENTIFIER	CODE	LATITUDE	LONGITUDE		c	LEG-SHIP
1100	030202	0	TDXX	B TM #26	8 btls 150m	MLML	66-18.02S	171-57.24W	g	COOK19MV
1123	030202	0	TDXX	E TSON	QGH AN 15	MLML	66-18.02S	171-57.24W	g	COOK19MV
2320	030202	0	TDXX	B TM #27	8 btls 020m	MLML	66-15.51S	171-57.78W	g	COOK19MV
2337	030202	0	TDXX	E TSON	QGH AN 15	MLML	66-15.51S	171-57.77W	g	COOK19MV
0135	040202	0	TDXX	B TM #28	8 btls 070m	MLML	66-15.57S	171-57.85W	g	COOK19MV
0152	040202	0	TDXX	E TSO	PQGH	MLML	66-15.57S	171-57.85W	g	COOK19MV
2129	040202	0	TDXX	B TM #29	8 btls 020m	MLML	66-16.53S	172-08.05W	g	COOK19MV
2140	040202	0	TDXX	E TSON	QGH AN 15	MLML	66-16.53S	172-08.06W	g	COOK19MV
2330	040202	0	TDXX	B TM #30	8 btls 076m	MLML	66-17.31S	172-08.06W	g	COOK19MV
2355	040202	0	TDXX	E TSO	PQGH	MLML	66-17.32S	172-08.04W	g	COOK19MV
0107	050202	0	TDXX	B TM #31	8 btls 040m	MLML	66-17.31S	172-08.06W	g	COOK19MV
0128	050202	0	TDXX	E TSO	L	MLML	66-17.32S	172-08.03W	g	COOK19MV
2028	050202	0	TDXX	B TM #32	8 btls 035m	MLML	66-18.68S	171-22.40W	g	COOK19MV
2038	050202	0	TDXX	E TSON	QGH AN 15	MLML	66-18.68S	171-22.40W	g	COOK19MV
2221	050202	0	TDXX	B TM #33	8 btls 129m	MLML	66-18.71S	171-22.39W	g	COOK19MV
2241	050202	0	TDXX	E TSO	PQGH	MLML	66-18.71S	171-22.40W	g	COOK19MV
2354	050202	0	TDXX	B TM #34	8 btls 040m	MLML	66-19.07S	171-23.37W	g	COOK19MV
0010	060202	0	TDXX	E TSO	L	MLML	66-19.07S	171-23.36W	g	COOK19MV
0701	080202	0	TDXX	B TM #35	8 btls 102m	MLML	66-14.40S	172-07.21W	g	COOK19MV
0721	080202	0	TDXX	E TSON	QGH AN 15	MLML	66-14.40S	172-07.21W	g	COOK19MV
0900	080202	0	TDXX	B TM #36	8 btls 018m	MLML	66-14.48S	172-07.34W	g	COOK19MV
0909	080202	0	TDXX	E TSO	PQGH	MLML	66-14.47S	172-07.34W	g	COOK19MV
2007	080202	0	TDXX	B TM #37	8 btls 100m	MLML	66-10.33S	172-12.80W	g	COOK19MV
2027	080202	0	TDXX	E TSON	QGH AN 15	MLML	66-10.33S	172-12.80W	g	COOK19MV
2330	080202	0	TDXX	B TM #38	8 btls 027m	MLML	66-12.57S	172-07.10W	g	COOK19MV
2344	080202	0	TDXX	E TSO	PQGH	MLML	66-12.59S	172-07.13W	g	COOK19MV
0322	090202	0	TDXX	B TM #39	8 btls 025m	MLML	66-10.81S	172-04.03W	g	COOK19MV
0333	090202	0	TDXX	E TSO	L	MLML	66-10.72S	172-04.01W	g	COOK19MV
2103	090202	0	TDXX	B TM #40	8 btls 075m	MLML	66-10.06S	172-05.25W	g	COOK19MV
2121	090202	0	TDXX	E TSON	QGH AN 15	MLML	66-10.06S	172-05.25W	g	COOK19MV
0646	100202	0	TDXX	B TM #41	8 btls 100m	MLML	65-56.61S	172-02.82W	g	COOK19MV
0708	100202	0	TDXX	E TSON	QGH AN 15	MLML	65-56.61S	172-02.82W	g	COOK19MV
0952	100202	0	TDXX	B TM #42	8 btls 100m	MLML	65-48.83S	172-02.10W	g	COOK19MV
1015	100202	0	TDXX	E TSON	QGH AN 15	MLML	65-48.82S	172-02.11W	g	COOK19MV
2040	110202	0	TDXX	B TM #43	8 btls 077m	MLML	66-06.13S	172-03.91W	g	COOK19MV
2101	110202	0	TDXX	E TSON	QGH AN 15	MLML	66-06.13S	172-03.90W	g	COOK19MV
2310	110202	0	TDXX	B TM #44	8 btls 021m	MLML	66-06.13S	172-03.90W	g	COOK19MV
2326	110202	0	TDXX	E TSO	PQGH	MLML	66-06.13S	172-03.90W	g	COOK19MV

#GMT	DDMMYY	SAMP	B	SAMPLE	DISP				p	CRUISE
#TIME	DATE	TZ	CODE	E IDENTIFIER	CODE	LATITUDE	LONGITUDE		c	LEG-SHIP
#										
0303	120202	0	TDXX	B TM #45	8 btls 050m	MLML	66-05.89S	172-05.26W	g	COOK19MV
0317	120202	0	TDXX	E TSO	L	MLML	66-05.89S	172-05.25W	g	COOK19MV
2025	120202	0	TDXX	B TM #46	8 btls 124m	MLML	66-01.98S	170-59.85W	g	COOK19MV
2055	120202	0	TDXX	E TSON	QGH AN 15	MLML	66-01.98S	170-59.86W	g	COOK19MV
2302	120202	0	TDXX	B TM #47	8 btls 033m	MLML	66-02.03S	170-59.92W	g	COOK19MV
2325	120202	0	TDXX	E TSO	PQGH	MLML	66-02.03S	170-59.92W	g	COOK19MV
0029	130202	0	TDXX	B TM #48	8 btls 050m	MLML	66-02.03S	170-59.92W	g	COOK19MV
0054	130202	0	TDXX	E TSO	L	MLML	66-02.03S	170-59.92W	g	COOK19MV
0600	130202	0	TDXX	B TM #49	8 btls 100m	MLML	66-02.03S	170-59.92W	g	COOK19MV
0618	130202	0	TDXX	X TSON	QGH AN 15	MLML	66-02.03S	170-59.92W	g	COOK19MV
0634	130202	0	TDXX	B TM #50	8 btls 076m	MLML	66-02.03S	170-59.92W	g	COOK19MV
0652	130202	0	TDXX	E TSO	L	MLML	66-02.03S	170-59.93W	g	COOK19MV
2039	140202	0	TDXX	B TM #51	8 btls	MLML	65-57.09S	172-11.26W	g	COOK19MV
2054	140202	0	TDXX	E TSON	QGH AN 15	MLML	65-57.09S	172-11.25W	g	COOK19MV
2216	140202	0	TDXX	B TM #52	8 btls 075m	MLML	65-57.08S	172-11.34W	g	COOK19MV
2241	140202	0	TDXX	E TSO	PQGH	MLML	65-57.08S	172-11.33W	g	COOK19MV
2350	140202	0	TDXX	B TM #53	8 btls 020m	MLML	65-57.08S	172-11.33W	g	COOK19MV
0002	150202	0	TDXX	E TSO	L	MLML	65-57.08S	172-11.33W	g	COOK19MV
2242	190202	0	TDXX	B TM #54	8 btls	MLML	52-23.12S	166-56.82W	g	COOK19MV
2326	190202	0	TDXX	E TSON	QGH AN 15	MLML	52-23.12S	166-56.82W	g	COOK19MV
0116	200202	0	TDXX	B TM #55	8 btls 042m	MLML	52-23.26S	166-56.76W	g	COOK19MV
0147	200202	0	TDXX	E TSO	PQGH	MLML	52-23.82S	166-56.69W	g	COOK19MV
0250	200202	0	TDXX	B TM #56	8 btls 028m	MLML	52-25.84S	166-56.35W	g	COOK19MV
0307	200202	0	TDXX	E TSO	L	MLML	52-26.36S	166-56.39W	g	COOK19MV
2040	200202	0	TDXX	B TM #57	8 btls 096m	MLML	52-53.06S	167-27.16W	g	COOK19MV
2108	200202	0	TDXX	E TSON	QGH AN 15	MLML	52-53.05S	167-27.15W	g	COOK19MV
2321	200202	0	TDXX	B TM #58	8 btls 024m	MLML	52-52.62S	167-26.17W	g	COOK19MV
2337	200202	0	TDXX	E TSO	PQGH	MLML	52-52.61S	167-26.35W	g	COOK19MV
0054	210202	0	TDXX	B TM #59	8 btls 030m	MLML	52-51.36S	167-26.04W	g	COOK19MV
0115	210202	0	TDXX	E TSO	L	MLML	52-51.17S	167-25.76W	g	COOK19MV

#GMT	DDMMYY	SAMP	B	SAMPLE	DISP			p	CRUISE
#TIME	DATE	TZ	CODE	E IDENTIFIER	CODE	LATITUDE	LONGITUDE	c	LEG-SHIP
#									
#*** Open Nets ***									
1549	230102	0	ON1M	B 202 o	UHI	55-24.41S	171-34.99W	g	COOK19MV
1609	230102	0	ON1M	E Biomass	138m UHI	55-24.34S	171-35.42W	g	COOK19MV
1615	230102	0	ON1M	B 202 o	UHI	55-24.32S	171-35.52W	g	COOK19MV
1631	230102	0	ON1M	E Biomass,Grazing	100m UHI	55-24.26S	171-35.85W	g	COOK19MV
1432	240102	0	ON1M	B 202 o	UHI	55-19.99S	171-23.09W	g	COOK19MV
1438	240102	0	ON1M	E Biomass,Grazing	100m UHI	55-19.99S	171-23.09W	g	COOK19MV
1258	290102	0	ON1M	B 202 o	UHI	66-20.12S	171-57.81W	g	COOK19MV
1314	290102	0	ON1M	E Biomass	112m UHI	66-20.17S	171-58.31W	g	COOK19MV
1320	290102	0	ON1M	B 202 o	UHI	66-20.19S	171-58.49W	g	COOK19MV
1333	290102	0	ON1M	E Grazing	100m UHI	66-20.22S	171-59.12W	g	COOK19MV
1318	310102	0	ON1M	B 202 o	UHI	66-36.63S	171-49.29W	g	COOK19MV
1325	310102	0	ON1M	E Biomass	34m UHI	66-36.55S	171-49.57W	g	COOK19MV
1330	310102	0	ON1M	B 202 o	UHI	66-36.52S	171-49.68W	g	COOK19MV
1343	310102	0	ON1M	E Biomass	34m UHI	66-36.38S	171-50.07W	g	COOK19MV
1347	310102	0	ON1M	B 202 o	UHI	66-36.35S	171-50.18W	g	COOK19MV
1400	310102	0	ON1M	E Biomass	90m UHI	66-36.36S	171-50.67W	g	COOK19MV
1405	310102	0	ON1M	B 202 o	UHI	66-36.40S	171-50.85W	g	COOK19MV
1415	310102	0	ON1M	E Biomass	90m UHI	66-36.46S	171-51.40W	g	COOK19MV
1423	310102	0	ON1M	B 202 o	UHI	66-36.53S	171-51.68W	g	COOK19MV
1434	310102	0	ON1M	E Biomass	90m UHI	66-36.64S	171-52.25W	g	COOK19MV
1440	310102	0	ON1M	B 202 o	UHI	66-36.71S	171-52.46W	g	COOK19MV
1445	310102	0	ON1M	E Biomass	90m UHI	66-36.77S	171-52.68W	g	COOK19MV
0703	020202	0	ON1M	B 202 o	UHI	66-35.25S	172-14.54W	g	COOK19MV
0730	020202	0	ON1M	E Biomass	107m UHI	66-35.35S	172-15.33W	g	COOK19MV
0746	040202	0	ON1M	B 333 v	UHI	66-14.53S	172-02.35W	g	COOK19MV
0758	040202	0	ON1M	E Grazing	50m UHI	66-14.60S	172-02.53W	g	COOK19MV
0821	040202	0	ON1M	B 333 v	UHI	66-14.86S	172-03.04W	g	COOK19MV
0826	040202	0	ON1M	E Grazing	50m UHI	66-14.93S	172-03.19W	g	COOK19MV
0837	040202	0	ON1M	B 333 v	UHI	66-15.07S	172-03.48W	g	COOK19MV
0846	040202	0	ON1M	E Grazing	50m UHI	66-15.20S	172-03.73W	g	COOK19MV
0854	040202	0	ON1M	B 202 o	UHI	66-15.36S	172-04.10W	g	COOK19MV
0906	040202	0	ON1M	E Biomass	104m UHI	66-15.60S	172-04.79W	g	COOK19MV
0736	050202	0	ON1M	B 202 o	MLML	66-16.31S	172-02.86W	g	COOK19MV
0748	050202	0	ON1M	E Biomass	105m MLML	66-16.37S	172-02.64W	g	COOK19MV
0721	060202	0	ON1M	B 22 v plankton	MLML	66-18.98S	171-23.18W	g	COOK19MV
0733	060202	0	ON1M	E diversity	10m MLML	66-18.92S	171-23.37W	g	COOK19MV

#GMT	DDMMYY	SAMP	B	SAMPLE	DISP			p	CRUISE
#TIME	DATE	TZ	CODE	E IDENTIFIER	CODE	LATITUDE	LONGITUDE	c	LEG-SHIP
1048	080202	0	ON1M	B 333 o	UHI	66-14.00S	172-08.08W	g	COOK19MV
1058	080202	0	ON1M	E Grazing	90m UHI	66-14.00S	172-08.19W	g	COOK19MV
1110	080202	0	ON1M	B 333 o	UHI	66-13.95S	172-08.43W	g	COOK19MV
1120	080202	0	ON1M	E Grazing	90m UHI	66-13.93S	172-08.56W	g	COOK19MV
1130	080202	0	ON1M	B 202 o	UHI	66-13.92S	172-08.76W	g	COOK19MV
1140	080202	0	ON1M	E Biomass	106m UHI	66-13.90S	172-09.03W	g	COOK19MV
0518	090202	0	ON1M	B 333 o	UHI	66-09.67S	172-06.14W	g	COOK19MV
0530	090202	0	ON1M	E Grazing	90m UHI	66-09.69S	172-06.67W	g	COOK19MV
0537	090202	0	ON1M	B 333 o	UHI	66-09.66S	172-07.07W	g	COOK19MV
0548	090202	0	ON1M	E Grazing	90m UHI	66-09.68S	172-07.56W	g	COOK19MV
0608	090202	0	ON1M	B 202 o	UHI	66-09.68S	172-08.34W	g	COOK19MV
0620	090202	0	ON1M	E Biomass	106m UHI	66-09.75S	172-08.76W	g	COOK19MV
0532	120202	0	ON1M	B 333 o	UHI	66-05.87S	172-05.44W	g	COOK19MV
0548	120202	0	ON1M	E Grazing	100m UHI	66-05.89S	172-05.60W	g	COOK19MV
0550	120202	0	ON1M	B 333 o	UHI	66-05.90S	172-05.58W	g	COOK19MV
0604	120202	0	ON1M	E Grazing	100m UHI	66-05.87S	172-05.89W	g	COOK19MV
0612	120202	0	ON1M	B 202 o	UHI	66-05.87S	172-06.03W	g	COOK19MV
0622	120202	0	ON1M	E Biomass	109m UHI	66-05.85S	172-06.31W	g	COOK19MV
0625	120202	0	ON1M	B 202 o	UHI	66-05.85S	172-06.39W	g	COOK19MV
0633	120202	0	ON1M	E Biomass	50m UHI	66-05.80S	172-06.71W	g	COOK19MV
0715	130202	0	ON1M	B 202 o	UHI	66-02.19S	171-00.04W	g	COOK19MV
0737	130202	0	ON1M	E Biomass	300m UHI	66-02.53S	171-00.13W	g	COOK19MV
0741	130202	0	ON1M	B 202 o	UHI	66-02.63S	171-00.12W	g	COOK19MV
0747	130202	0	ON1M	E Biomass	50m UHI	66-02.74S	171-00.02W	g	COOK19MV
0758	130202	0	ON1M	B 202 o	UHI	66-02.90S	170-59.83W	g	COOK19MV
0805	130202	0	ON1M	E Biomass	52m UHI	66-03.02S	170-59.67W	g	COOK19MV
0828	130202	0	ON1M	B 202 o	UHI	66-03.25S	170-59.24W	g	COOK19MV
0840	130202	0	ON1M	E Biomass	98m UHI	66-03.44S	170-58.98W	g	COOK19MV
0845	130202	0	ON1M	B 333 o	UHI	66-03.56S	170-58.85W	g	COOK19MV
0857	130202	0	ON1M	E Grazing	100m UHI	66-03.73S	170-58.58W	g	COOK19MV
0903	130202	0	ON1M	B 333 o	UHI	66-03.77S	170-58.48W	g	COOK19MV
0914	130202	0	ON1M	E Grazing	100m UHI	66-03.92S	170-58.24W	g	COOK19MV

#GMT	DDMMYY	SAMP	B	SAMPLE	DISP	LATITUDE	LONGITUDE	p	CRUISE
#TIME	DATE	TZ	CODE	E IDENTIFIER	CODE			c	LEG-SHIP
#									
0619	150202	0	ON1M	B 202 o	UHI	65-57.19S	172-11.74W	g	COOK19MV
0634	150202	0	ON1M	E Biomass	95m UHI	65-57.37S	172-12.38W	g	COOK19MV
0639	150202	0	ON1M	B 202 o	UHI	65-57.43S	172-12.63W	g	COOK19MV
0647	150202	0	ON1M	E Biomass	50m UHI	65-57.52S	172-12.99W	g	COOK19MV
0651	150202	0	ON1M	B 333 o	UHI	65-57.57S	172-13.13W	g	COOK19MV
0703	150202	0	ON1M	E Grazing	100m UHI	65-57.74S	172-13.57W	g	COOK19MV
0707	150202	0	ON1M	B 333 o	UHI	65-57.80S	172-13.75W	g	COOK19MV
0718	150202	0	ON1M	E Grazing	100m UHI	65-57.98S	172-14.38W	g	COOK19MV
0750	200202	0	ON1M	B 202 o	UHI	52-34.98S	166-57.41W	g	COOK19MV
0818	200202	0	ON1M	E Biomass	300m UHI	52-35.67S	166-58.03W	g	COOK19MV
0825	200202	0	ON1M	B 202 o	UHI	52-35.82S	166-58.17W	g	COOK19MV
0832	200202	0	ON1M	E Biomass	50m UHI	52-35.97S	166-58.31W	g	COOK19MV
0842	200202	0	ON1M	B 202 o	UHI	52-36.18S	166-58.53W	g	COOK19MV
0854	200202	0	ON1M	E Biomass	95m UHI	52-36.43S	166-58.80W	g	COOK19MV
0902	200202	0	ON1M	B 333 o	UHI	52-36.59S	166-58.96W	g	COOK19MV
0914	200202	0	ON1M	E Grazing	100m UHI	52-36.85S	166-59.13W	g	COOK19MV
0643	210202	0	ON1M	B 202 o	UHI	52-50.74S	167-22.50W	g	COOK19MV
0656	210202	0	ON1M	E Biomass	107m UHI	52-50.91S	167-22.39W	g	COOK19MV
0701	210202	0	ON1M	B 202 o	UHI	52-50.96S	167-22.32W	g	COOK19MV
0714	210202	0	ON1M	E Biomass	96m UHI	52-51.11S	167-22.19W	g	COOK19MV

**** Expendable Bathythermographs ****

2005	180202	0	BTXP	MK21 # 18	T-5 GDC	53-12.95S	167-48.02W	g	COOK19MV
0102	220202	0	BTXP	MK21 # 19	T-5 GDC	51-48.90S	169-51.32W	g	COOK19MV
0114	220202	0	BTXP	MK21 # 20	T-5 GDC	51-47.60S	169-54.26W	g	COOK19MV
2136	220202	0	BTXP	MK21 # 21	T-5 GDC	49-27.34S	175-02.62W	g	COOK19MV
2114	200102	0	BTXP	MK21 # 8 Fast_Deep	GDC	49-51.40S	179-52.16W	g	COOK19MV
0048	220102	0	BTXP	MK21 # 9 Fast_Deep	GDC	53-31.97S	175-09.88W	g	COOK19MV
0303	230102	0	BTXP	MK21 # 10 Fast_Deep	GDC	55-27.15S	171-35.93W	g	COOK19MV
1955	230102	0	BTXP	MK21 # 11 Fast_Deep	GDC	55-24.54S	171-35.21W	g	COOK19MV
0005	280102	0	BTXP	MK21 # 12 Fast_Deep	GDC	61-42.01S	170-46.27W	g	COOK19MV
0010	280102	0	BTXP	MK21 # 13 Fast_Deep	GDC	61-42.86S	170-46.20W	g	COOK19MV
1956	180202	0	BTXP	MK21 # 17 Fast_Deep	GDC	53-14.74S	167-49.40W	g	COOK19MV

#

End Sample Index

COOK19MV