

1812

WELCOME



A BOOKLET OF
COMPLETE
INFORMATION
OF THE CITY OF
SAN DIEGO

Published by the San Diego
Advertising Agency
816 Timken Bldg
San Diego, California

Coming to San Diego to Live?
Looking to Buy From a
Reliable Store?

We carry nothing but Ladies' and Men's Furnishings. Only store of its kind in San Diego. Every Article sold Guaranteed Exclusive sale of "ONYX" Hosiery and "MERODE" Underwear.

CROSS & SONS

1211-1215 5th St., Bet. A & B Sts.

LA JOLLA The
Charming
Seaside
Resort

(15 Miles North of San Diego)

A Delightful Place for Recreation, Scenery, Climate, Ocean

Motor Cars and Steam Trains leave 4th and C St., Ticket Office, (opp. Brewster Hotel) and Depot, Ft. C St.

Frequently Daily
via

Los Angeles & San Diego Beach Ry.

LA JOLLA LINE

1912 35
Impress
THEATRE

FIFTH & B STREETS

**WHERE
EVERYBODY
GOES**

SULLIVAN & CONSIDINE

Implies The Best In

VAUDEVILLE

Offering a form of amusement that has set the pace for the world.

At all times wholesome, refined and dignified—appealing to all classes.

Seats Reserved in Advance.

Phones: Main 100—Home 4578

Two Shows: Nightly at 7:30 and 9:00 p. m.
10, 20 and 30c.

Matinees: Mon., Wed., Sat. and Sun. at
2:45 p. m.—10 and 20c (except Sunday and Holidays 10, 20 and 30c.

Seats reserved 20 and 30c. Seats reserved in advance.

Wm. TOMPKINS, Res. Mgr.

FOUR ROUTES EAST

SUNSET

Double Daily Service to
New Orleans and East
through Dixie Land

EL PASO

"GOLDEN STATE LIMITED"
The Train de Luxe, exclusively
first class
The "CALIFORNIAN" for
both first and second class travel
The line of low altitudes

OGDEN

The trail of the Argonauts—
The route of the
SAN FRANCISCO

"OVERLAND LIMITED"

SHASTA

The "ROAD OF A THOUSAND
WONDERS"—
To the East through the
great Northwest

For information and descrip-
tive folders; see

A. D. HAGAMAN, Com. Agent

SOUTHERN PACIFIC CO.

951 Fifth St. San Diego, Cal.

Phones: Home, 3608; Sunset, Main 128

INDEX

Banks	31
Blocks and Buildings	17, 19, 21
Cafes	41
Cafeterias	41
Cemeteries	37
Clubs	41
Churches	57, 59, 61
City Officers	37
County Officers	37
Diagram of Streets	5
Elevations and Distances	55
Excursion Trips	31
Express Companies	31
Fire Alarm Signals	27, 31
Garages	37
Halls	21
Hospitals	37
Hotels and Apartments	23, 25
Information Bureaus	39
Parks	31
Points of Interest	43, 53
Public Buildings	39, 37
Railway Offices	15
Railway Time Tables	7
Real Estate Firms	39
Secret Societies	35, 37
Street Railway Time Tables	11, 13, 15
Steamship Time Tables	9, 11
Steamship Offices	39
Telephone Offices	31
Telegraph Offices	39
Theatres	31
Transfer Companies	31
Wharves	21

THE SAN DIEGO POCKET GUIDE

Has Been Placed on the "Authorized
List of Advertising by

**THE MERCHANTS' ASSOCIATION
OF SAN DIEGO, CAL.**

HEADQUARTERS FOR NATIVE GEMS

Abalone Shell Jewelry
Blister Pearl
Novelty Jewelry
Beads
Shell Souvenirs
Kelp Novelties
Mexican Burnt Leather
Goods
Indian Moccasins
Pennants
Full Line of
Souvenir Post Cards
Stationery
All the Latest
Magazines and Newspapers

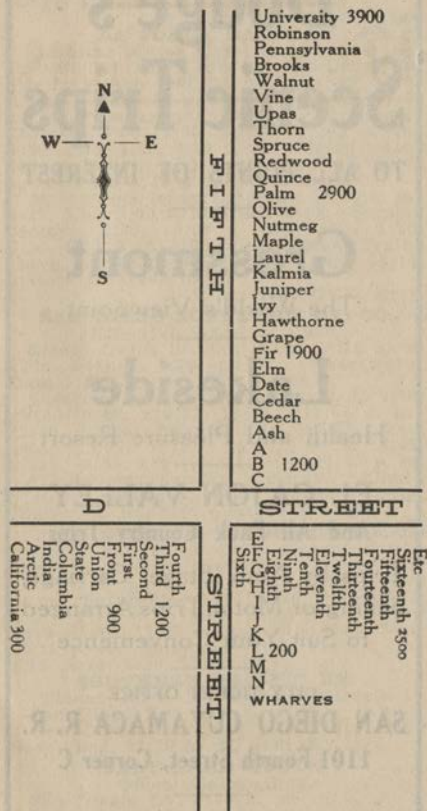
San Diego Curio Co.

1410 F Street,

One Door East from Cor. Fifth & F Sts.

SAN DIEGO :: CALIFORNIA

Diagram Showing Arrangement
of Streets from "Fifth and D"



This corner is the heart of the shopping district.
These streets are parallel to the compass indices,
and one can tell the direction on any street here

Dodge's Scenic Trips

TO ALL POINTS OF INTEREST

Grossmont

The World's Viewpoint

Lakeside

Health and Pleasure Resort

EL CAJON VALLEY

And All Back Country Trips

Trips by Auto, Stage, Carriage,
Sailing or Motor Trips Arranged
to Suit Your Convenience

CITY TICKET OFFICE

SAN DIEGO CUYAMACA R. R.

1101 Fourth Street, Corner C

FRANK E. DODGE, Excursion Manager
HOME PHONE 3493 SUNSET MAIN 462

RAILWAY TIME TABLES

SANTA FE. *Foot of D St*

Leave 8:40 a. m., 1:10; p. m., 3:00 p. m.,
*4:05 p. m., 2:45 a. m., *6:35 p. m. Ar-
rive 1:10 p. m., 5:20 p. m., 6:30 p. m.,
4:40 a. m., *10:25 a. m.

*To Escondido. *Sunday only.

S. C. PAYSON, Gen'l Agt.

LA JOLLA RAILWAY *4th C*

Gasoline Motor Cars leave Ticket Of-
fice, Fourth and C streets, San Diego, for
Pacific Beach and La Jolla: 9:05, 11:00
a. m., 4:05, 6:10 p. m. week days (11:00
p. m. Tuesday and Saturday). Sunday
Motors: 8:00, 9:05, 10:00, 11:00 a. m.,
1:30, 2:45, 4:20, 6:10 p. m. Steam trains
leave Fourth and C streets 7:40, 10:00
a. m., 2:00, 5:15 p. m. week days.

Motor Cars leave La Jolla: 10:00 a. m.,
1:15, 5:00, 7:00 p. m. week days. Sunday
Motors: 8:50, 10:00 a. m., 12:25, 1:55,
3:30, 4:20, 5:10, 7:00 p. m. Steam Trains
leave La Jolla: 6:55, 8:28 a. m., 12:10,
3:45 p. m. week days.

E. S. BABCOCK, Pres.

SAN DIEGO SOUTHERN RY. CO. *Foot 5th*

Effective Sept. 1st, 1910.

Steam trains lv. San Diego: 9:18 a. m.
(Tia Juana) 1:38 p. m. (Sweetwater
Dam), *2:06 p. m. (Tia Juana).

Electric cars lv. *x6:40, x7:40, 8:10,
x8:55, 9:40, x10:25, 11:10, x11:55 a. m.,
12:40, x1:25, *x1:40, 2:10, x2:55, 3:40,
x4:25, 5:05, -5:15, x5:55, 6:20, 6:40,
x7:15, -9:35, x10:40, c11:45, ox11:45 p. m.

*Daily ex. Sunday. xOtay. -Chula
Vista. †Saturday and Sunday only.
cDaily ex. Sunday. oSaturday only.

SAN DIEGO & CUYAMACA RY. *Foot of 10th*

Leave San Diego Daily Except Satur-
day and Sunday, eastbound: 7:00, *7:30,
8:50, 11:05 a. m., 1:15, 3:14, 5:20, 10:00
p. m. Saturday—7:00, *7:30, 8:50, 11:05
a. m., 1:15, 3:14, 5:00, 11:15 p. m. Sun-
days—8:50, 11:05 a. m., 1:15, 3:14, 5:00,
11:15 p. m. Sundays—8:50, 11:05 a. m.,
1:15, 3:14, 5:20, 10:00 p. m.

SOUTHERN PACIFIC RY.

Ticket Office, Fifth and E Streets
San Diego, Lv. 8:30 a. m.
New Orleans, Ar. 6:45 p. m., third day;
New York, 12:30 p. m., fifth day.

SALT LAKE ROUTE.

Office, Union Bldg.
San Diego, Lv. 2:45 a. m.
Los Angeles, Lv. 10:30 a. m.
Chicago, Ar. 11:55 a. m. the third day.



GOING EAST?

For a Comfortable and Pleasant Trip we Suggest the

SALT LAKE ROUTE

With its Beautiful Scenic Attractions and Excellent Service Including The

LOS ANGELES LIMITED

THREE DAYS TO CHICAGO

A Palatial Train

For Particulars Ask

C. C. JEWETT, Com'l. Agent

UNION BUILDING SAN DIEGO

Pres. sails May 22, 11 PM. fr San Diego 72¹⁵
Redondo

Rate of half sails Sundays 10 AM fr San Pedro for S. Pedro 3⁰⁰

STEAMSHIP TIME CARDS

LOS ANGELES, SAN FRANCISCO
SEATTLE, TACOMA

PRESIDENT OR GOVERNOR

Every Wednesday 11 P. M.

LOS ANGELES-SANTA BARBARA
SAN FRANCISCO

STEAMSHIP

STATE OF CALIFORNIA

Every Saturday 10 p. m. Wpm

Right Reserved to Change.

Ticket Office 3rd and D

Sunset 7, Home 3166

WHARF, FOOT FIFTH ST.



NORTH PACIFIC STEAMSHIP CO.



The Thru Line—San Diego to Portland, via Los Angeles, San Francisco, Eureka, Astoria.

Steamers—"Roanoke" and "Geo. W. Elder." Alternate leaving San Diego every Tuesday at 1 p. m. Arrive at San Francisco Thursdays and at

Portland, Ore. Sundays.

Ensenada Service—S. S. Eureka will sail for Ensenada, Mex., Tuesdays and Fridays of every week at 8 p. m.

For further information regarding Freight and Passengers apply North Pacific S. S. Co., 1122 D St.

PACIFIC NAVIGATION S. S. CO.

"Harvard" and "Yale" for Los Angeles and San Francisco, from Santa Fe Wharf, Friday and Sunday, 8 a. m.

Connecting at East San Pedro with Salt Lake Line for all points east. Schedule time to San Francisco, 25 hours, to Los Angeles 6 hours.

Telephone: Home 4441, Sunset 227.

Grant Hotel Building, Corner Third and D Sts.

MEXICAN STEAMER

"BENITO JUAREZ"

Of Compania Naviera del Pacifico, S. A., Sail from San Diego Jan. 22 and every 20 days thereafter. Stops at Ensenada, San Quintin, Magdalena Bay, San Jose del Cabo and Mazatlan on both north and south-bound trips. S.S. Victoria leaves for Ensenada every Tuesday and Friday at 8 p. m. For passenger and freight rates apply to GEO. W. BEERMAKER, Gen'l Agent, 1422 F St. Phone Sunset Main 514.

2¹⁵ includes berth + meal.

Harvard, Thursday May 21
Ensenada, 2 1/2 hrs to stay
to East - Pedro 2 1/2 Salt Lake, 2 1/2
Los Ang.

MEXICO



Don't Fail to Visit
Tia Juana, Mexico,
the recent Battle
Ground

MUCH OF INTEREST TO SEE

Reached by San Diego Southern
Railway, leaving foot of
Sixth St., San Diego,
daily at 9:18 a. m.

FARE, ROUND TRIP 90 Cts.

STEAMSHIP TIME TABLES

CONTINUED

Ferry and Excursion Boats

POINT LOMA FERRY. *foot of H St*

Leaves Star Boat House, foot of H street. Take Coronado Ferry car.

Leaves San Diego for Point Loma Dock, La Playa, Quarantine Station and Fort Rosecrans at *7:00, 9:00, 10:00 and 11:00 a. m., 2:00, 4:00, *5:40 p. m.

*7:00 a. m., trip omitted on Sundays.

*5:40 p. m., trip to Point Loma Dock only.

STREET RAILWAY TIME TABLES

SAN DIEGO ELECTRIC RAILWAY CO.

ROUTE NO. 1.

PAVILION CARS leave Fifth and D Streets on the hour and every 10 minutes thereafter from 5:50 a. m. to 11:50 p. m. 5 minute service from 6:00 a. m. to 9:00 a. m. and from 2:00 to 3:00 p. m. Last car leaves 5th and D 11:50 p. m. Sundays 5 minute service from 8 a. m. to 9:00 p. m.

CITY HEIGHTS LINE to connect take cars leaving 5th and D Streets on the 20 and 50 minutes after the hour; 15 minute service from 6:55 a. m. to 6:10 p. m. during which time previous cars can be taken from 5th and D to connect. Last car from 5th and D to connect with City Heights car leaves at 11:30 p. m.

ADAMS AVENUE LINE to connect take cars leaving 5th and D on the 20 and 50 minutes after the hour. Last car to connect leaves 5th and D at 11:30 p. m.

ROUTE NO. 1.

LOGAN HEIGHTS CARS leave 5th and D on the 6, 16, 26, 36, 46 and 55 minutes after the hour. Last car 11:50 p. m.

ROUTE NO. 2.

D STREET & BROOKLYN HEIGHTS.

Leave Foot of D Street for Fairmount Ave. and City Heights on the 5, 15, 25, 35, 45, 55 minutes after the hour from 5:55 a. m. to 11:55 p. m. Last car at 11:55 p. m.

Leave Fairmount Ave. and City Heights for Santa Fe Depot and Foot of D Street on the hour and every 10 minutes thereafter from 5:50 a. m. to 12:40 after midnight.

Five Minute service between 5th and D

Transfer to Adams Ave. at Mission

THE

Timken Building

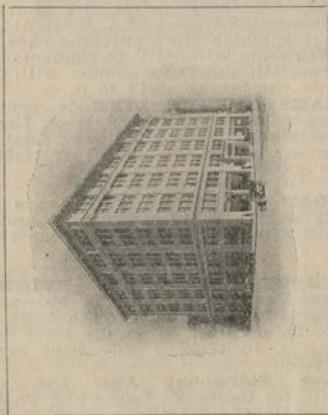
SIXTH & E STREETS

The Finest Office Building in San Diego. Every Convenience, The Best of Service.

FOR OFFICES SEE

JOHN BURNHAM & CO.,

Rooms 212-214



STREET RAILWAY TIME TABLES

CONTINUED

Sts., and 30th and Kalmia Sts. from 6:05 a. m. to 8:15 a. m. and from 4:05 p. m. to 7:15 p. m.

These cars for Santa Fe Station.

ROUTE NO. 6.

FIRST AND F STREET LINE.

Leave First and Laurel for 25th and F Sts. on the hour and every 10 minutes thereafter from 6 a. m. to 11:50 p. m.

Leave 25th and F Streets for First and Laurel on the even hour and every 10 minutes thereafter from 6 a. m. till 11:50 p. m.

These cars run via 3rd and D Sts to F.

ROUTE NO. 3.

THIRD STREET CARS leave 3rd and D for Mission Hills on the 5, 15, 25, 35, 45 and 55 minutes after the hour, 5:45 a. m. to 11:45 p. m.

ROUTE NO. 5.

30TH AND GRANT STREET CARS leave 3rd and D on the 5, 25 and 45 minutes after the hour from 5:45 a. m. to 11:45 p. m. Last car 11:45 p. m.

ROUTE NO. 3.

25TH AND H STREET CARS leave 3rd and D on the 15, 35 and 55 minutes after the hour, from 5:55 a. m. to 11:55 p. m. Last car 11:55 a. m.

ROUTE NO. 4.

"M" STREET CARS leave 5th and D for Greenwood Cemetery on the 4, 24 and 44 minutes after the hour from 5:44 a. m. to 11:44 p. m. Last car 11:44 p. m. This line makes connection with the Pacific Coast Steamship Co's steamers.

ROUTE NO. 4.

STATE AND WINDER STREET CARS leave 5th and D on the 1, 21 and 41 minutes after the hour from 6:21 to 11:41 p. m.

ROUTE NO. 9 AND 10.

FERRY CARS leave 5th and D on the 10, 30 and 50 minutes after the hour from 6:10 a. m. to 11:30 p. m. Last car 11:30 p. m. except on Saturday night when last car leaves 5th and D 11:50 p. m., connecting with Ferry for Coronado.

*Tennis & Ferris } 15¢ return tickets
Union Building } for Coronado*

Elmo Riddell & Company

1725 D STREET

Homes,
Apartment House
Sites
and Business Property

We guarantee you a square deal at this office, and always endeavor to state only facts.

We know the true value of nearly every piece of property in San Diego, this knowledge is at your disposal.

Call and get acquainted.

Elmo Riddell & Company

1725 D STREET

Home 4464

Main 3532

STREET RAILWAY TIME TABLES

CONTINUED

CORONADO CARS leave Hotel del Coronado on the hour, 20 and 40 minutes after the hour from 6:20 a. m. to 11:20 p. m. Last car 11:20 p. m., except Saturday night when last car leaves 11:40 p. m., connecting with Ferry for San Diego.

B STREET CARS leave Fourteenth and B on the hour, 20 and 40 minutes thereafter from 6:20 a. m. to 12:00 Midnight. Leave Arctic and B on the 10, 30 and 50 minutes after the hour from 6:30 a. m. to 11:50 p. m.

POINT LOMA RAILROAD CO.

Leave

Fourth and D Streets, 7:01, 7:41, 8:21, 9:01, 9:41, 10:01 (Express), 10:21, 11:01, 11:41, a. m., 12:21, 1:01, 1:41, 2:21, 3:01, 3:41, 4:21, 5:01, 5:41, 7:01, 8:21, 9:41, 11:21 p. m.

Ocean Beach, 6:22, 7:02, 7:42, 8:22, 9:02, 9:42, 10:22, 11:02 (Express), 11:02, 11:42 a. m., 12:22, 1:02, 1:42, 2:22, 3:02, 3:42, 4:22, 5:02, 5:42, 6:22, 7:42, 9:02, 10:22 p. m., 12:00 Midnight.

Cars leaving Fourth and D at 7:01, 11:41 a. m. and 4:21 and 5:01 p. m. will run via south arm of loop into Ocean Beach, returning via short line.

Express car daily except Sunday from Third and D streets at 10:01 and leaving Ocean Beach at 11:02 a. m.

Except Sundays and Holidays, and 8:21 car leaving Third and D Streets, all cars run to Santa Cruz Street.

Sunday Schedule—7:01, 7:41, 8:21, 9:01, 9:41, 10:21, 11:01, 11:41 a. m., 12:21, 1:01, 1:41, 2:21, 3:01, 3:41, 4:21, 5:01, 5:41, 6:21, 7:01, 7:41, 9:21, 11:21 p. m.

RAILWAY OFFICES.

A. T. & Santa Fe—Ticket office, Grant Hotel, 4th bet. C and D Sts.

Los Angeles & San Diego Beach Ry.—Foot of C.

San Diego & Arizona Ry.—209 Union Building.

San Diego, Cuyamaca & Eastern Ry.—10th and M Sts.

San Diego Electric Ry.—Union Building.

San Diego Southern Ry.—Foot of 6th.

Salt Lake Ry.—3rd and D Sts.

Southern Pacific—5th and E Sts.

A PREDOMINANT FEATURE

INTEREST PAID ON ALL DEPOSITS

- 3** Per Compound Interest on Ordinary Accounts with Checking Privilege
- 4** Per Compound Interest on Term Accounts for a Term of Six Months

This fact, combined with the known strength and solidity of this Bank, should prove an incentive to the habit of saving.

M. T. GILMORE, Pres.

J. W. SEFTON, JR., Vice-Pres.

E. M. BARBER, Cashier

SAN DIEGO SAVINGS BANK

Fifth and F Sts.
KEATING BLOCK

BLOCKS AND BUILDINGS

- American Nat'l Bank Block—N. E. Cor. 5th and D Sts.
- Armory—13th and G. Sts.
- Backesto—N. W. Cor. 5th and H Sts.
- Bancroft—S. E. Cor. 5th and G Sts.
- Bank of Commerce—341 5th St.
- Barney McMurtrie & Decker—N. W. Cor. 5th and A Sts.
- Bon Ton—S. W. Cor. 6th and D Sts.
- Botsford—1040 6th St.
- Braun—S. E. Cor. 5th and J Sts.
- Brewster—S. E. Cor. 4th and C Sts.
- Brown—561 5th St.
- Builders Exchange—820 5th St.
- Burbank—542 6th St.
- Carnegie—Bet. 8th and 9th on E. St.
- Central—767 5th St.
- Chaffee—1037 5th St.
- Choate and Peterson—832 5th St.
- City Hall—S. W. Cor. 5th and G. Sts.
- Cole—N. W. Cor. 5th and G Sts.
- Cosgrove Bldg.—960 4th St.
- Combine—1012 5th St.
- Commerce—1331 E. St.
- Conrad—1047 5th St.
- Cosgrove-Greer—846-56 5th St.
- County Hospital—End of 1st St.
- Court House—D St. bet. Front and Union Sts.
- Crane—1133 5th St.
- Crane—6th St. bet. B and C Sts.
- Dalton Bldg.—5th St.
- Dunton—1616 F St.
- Elks Building—N. W. Cor. 2nd and D
- Ernsting Building—915-17 5th St.
- Express—S. E. Cor. 2nd and D St.
- First National Bank—1332 E. St.
- Fletcher-Salmons—N. E. Cor. 6th and D Sts.
- Francis Apartments—S. W. Cor. 10th and D Sts.
- Fox-Heler Bldg.—S. E. Cor. 5th and E
- Gassen—1515 D St.
- Gerichten—820 5th St.
- Germania Hall—S. W. Cor. 9th and G Sts.
- Gilbert—965 5th St.
- Gould—1239 E.
- Granger—S. W. Cor. 5th and D Sts.
- Grant—1036 5th St.
- Grant Hotel—D St. bet. 3rd and 4th Sts.
- Griswold—1162 5th St.
- Hamilton—723 5th St.
- Hawley—1047 5th St.
- Helix—5th bet. A and B Sts.
- Hill—S. W. Cor. 6th and F Sts.

TRAVEL BY SEA

On our big new Steamships
Leave San Diego

Fast Through Service

Los Angeles, San Francisco
Seattle, Tacoma

PRESIDENT or GOVERNOR
Every Wednesday, 11 p. m.

Los Angeles, Santa Barbara
San Francisco

STATE OF CALIFORNIA
Every Saturday, 10 p. m

Close connections at Seattle with
the Company's Steamer
For Alaska

Berths and meals included in Fare
Special Round-Trip Rates

Right Reserved to Change Schedule



Ticket Offices
Union Building
THIRD AND D STREETS
J. Don Dunann

And Wharf Foot of Fifth Street

BLOCKS AND BUILDINGS

CONTINUED

Homeland—939 6th St.
Home Telephone—1027 6th St.
Humphrey-Tutten—929 5th St.
Ingersoll-Tutten—932 5th St.
Ingle—1324 F St.
Isis Theatre—1135 4th St.
Josse—S. E. Cor. 5th and D Sts.
Johnston, Jr.—S. E. Cor. 5th and B Sts.
Jessop—S. W. Cor. 6th and B Sts.
Kastle—631 6th St.
Leighton McMurtrie—N. W. Cor. 3rd and B Sts.
McNeece, Formerly Keating—N. W. Cor. 5th and F Sts.
Kuhn—1313 D St.
Langham—N. W. Cor. 4th and C Sts.
Lawyers—919 4th St.
Llewellyn—728 5th St.
McGuirk—611 5th St.
M. E. Church—N. E. Cor. 4th and D Sts.
Mirror Theatre Bldg.—S. E. Cor. 3rd and C Sts.
Marshall-Higgins—S. W. Cor. 4th and C Sts.
Marston—N. E. Cor. 5th and C Sts.
Masonic Temple—1423 H St.
New Masonic Temple—5th and Ash Sts.
Morse—1642 H St.
Murphy-Tutten—929 5th St.
Navajo—S. E. Cor. 3rd and F Sts.
Nesmith-Greeley—325 5th St.
New York—N. W. Cor. 6th and D Sts.
Overbaugh—1521 H St.
Otis Block—4th St. bet. B and C Sts.
Pacific—1424 F St.
Peterson—823 5th St.
Phillips—920 5th St.
Pierce-Morse—1436 F St.
Plaza—920 4th St.
Price—1512 H St.
Richelieu—1055 5th St.
Royal—1226 4th St.
Sabin—S. W. Cor. 6th and D Sts.
Savoy Theatre Bldg.—N. W. Cor. 3rd and C Sts.
Schafer—961 4th St.
Schmidt—961 4th St.
Schneider—5th bet. F and G Sts.
Scripps—S. W. Cor. 6th and C Sts.
Sefton—C bet. 4th and 5th Sts.
Selwyn—5th near H St.
Shaw—5th bet. A and B.
Sheldon—818 6th St.

CAFES AND CAFETERIAS

Sargent's

PALACE CAFE AND GRILL

Nicholas F. Sargent
Proprietor
SAN DIEGO, CALIFORNIA

Cor. 4th & Plaza

Opposite
U. S. Grant Hotel

Between C and D Sts.

Brewster Hotel

Savoy Cafe & Oyster Grotto

GOOD THINGS TO EAT

Private Rooms For Ladies

1055-1057 Fourth St. San Diego, Cal.

F. Solari

R. Olson

Berger's Grill

Leading Restaurant & Cafe in the City

1054-56 Fourth St. San Diego, Cal.

Sunset, Main 704; Home, 2537 Private Booths for Ladies

OYSTER LOAF CAFE

S. SOLAK, G. TOPUZES, Props.

The Only Place of the Kind in the City

We Serve Fresh Daily
Oysters, Clams, Crabs,
Shrimps, Lobsters

Fine Steaks and Poultry
Game and Dairy Dishes
Our Specialties

1228-1230 C St.—1114 Fourth St

VEGETARIAN CAFETERIA

M. A. HOLLISTER

Phone Home 3398

N. W. Cor. Fifth Sts. A &

BLOCKS AND BUILDINGS

CONTINUED

Snyder—835 6th St.
Starkey Building—5th and A Sts.
Steele—S. W. Cor. 6th and H Sts.
Stone—N. W. Cor. 2nd and F Sts.
Sun Building—S. E. Cor. 7th and B Sts.
Sunny Petrikowska Bldg.—S. W. Cor. 3d and F Sts.
Taber—4th bet. C and D Sts.
Thum—Cor. 7th and D Sts.
Timken—S. E. Cor. 6th and E Sts.
Title—841 5th St.
Tremont—841 5th St.
Turn-Hall—934 2nd St.
Union—S. W. Cor. 3rd and D Sts.
Watts—Cor. 5th and E Sts.
Worth—1232 5th St.
Whitney—1027 5th St.
Wright—752 5th St.
W. L. Minear Bldg.—S. E. Cor. 4th and F Sts.
Yuma—Bet. G and H on 5th St.
Y. M. C. A.—N. E. Cor. 7th and D Sts.
Beatty—1330 B St.

PUBLIC HALLS.

American Foresters Hall—1433 F St.
A. O. F. Hall—961 4th St.
Armory Hall—647 8th St.
Eagles' Hall—1521 H St.
Elks' Hall—Elks' Building, N. W. Cor. 2nd and D Sts.
Germania Hall—S. W. Cor. 9th and G Sts.
Harmony Hall—751 5th St.
K. of P. Hall—Cor. Third and E.
Kastle Hall—631 6th St.
N. G. S. M. Hall—Express Building, S. E. Cor. 6th and F Sts.
Odd Fellows' Hall—1428 H St.
San Diego Club—9th bet. D and E.
Wednesday Club—6th and Pennsylvania Ave.
Woodmen's Hall—937 6th St.
G. A. R. Hall—813 5th St.
Labor Temple—1536 H St.
Masonic Temple—Fifth and Ash Sts.
Armory Hall—13th and G Sts.
Longshoremans' Hall—Foot of H St.
Social Hall—1035 6th St.

WHARVES.

Star Boat House—Foot of H Street.
P. C. C. Co., Wharf—Foot of 5th St.
McKinley Wharf—Foot of H St.
Spreckels Bros.' Wharf—Foot of G St.
Santa Fe Wharf—Take Coronado Ferry Cars.

Have You Had a Ride on the Bay ?

If not, your visit to San Diego
is not complete

Take The

POINT LOMA FERRY

For Roseville, Quarantine Station, La Playa Theosophical School, U. S. Coal- ing Station and Fort Rosencrans.

FARE 40 CENTS ROUND TRIP

TAKE CORONADO FERRY CARS

No. 9 or 10 to foot of H Street and get off at Star Boat House Wharf.

CORONADO ISLANDS every WED- NESDAY and SUNDAY, Str. "Golden West" leaves at 9 A. M., returns at 5 P. M. Good Fishing all the way.

FARE ROUND TRIP, \$1.00

SPECIAL BAY TRIP

Leaves every afternoon at 2 o'clock with Guide.

FARE ROUND TRIP 50 CENTS

Launches and Shore Boats for Char- ter Day or Night at Reason- able Prices.

Visitors are Always Welcome
On Our Wharf.

STAR BOAT HOUSE,

Foot of H Street

PHONES: Sunset, Main 350. Home, 2350

CAPT. C. R. CRESWELL, Mgr.

HOTELS.

Albatross Inn.....	1815 Third St.
Arthur.....	Third & C Sts.
Ashforth.....	Fourth & Ash Sts.
Belcourt.....	Cor. Third & B Sts.
Bellevue.....	1314 G St.
Bon Ton.....	Sixth & D Sts.
Botsford.....	1048 Sixth St.
Brooklyn.....	1623 E St.
Burnap.....	1138 D St.
Brewster.....	Fourth & C Sts.
Brunswick.....	1468 First St.
Barstow.....	Fourth & A Sts.
Cabrillo.....	La Jolla, Cal.
Cecil Hotel —6th St. bet. B and C. . . .	
Chelsea.....	917 Fifth St.
Commerce.....	Fifth & E Sts.
Colonial Inn.....	Fifth & Fir Sts.
Coronado View.....	Fifth & G Sts.
Crane.....	1125 Fifth St.
Davis Camp.....	Mesa Grande
Denver.....	Fifth St. near F.
Del Coronado.....	Coronado
Detroit.....	D bet. First & Second Sts.
Dunlap.....	726 1/2 Fifth St.
Dunton.....	Seventh & F Sts.
El Cajon.....	El Cajon
Florence.....	Fourth & Fir Sts.
Grand Central.....	841 Fifth St.
Grossmont Inn.....	Grossmont
Haddon Hall.....	7th bet. A & Ash Sts.
Hawthorne Inn.....	2121 First St.
Helix.....	Fifth & A Sts.
Imperial.....	Seventh & D Sts.
Jewett.....	Fourth & A Sts.
Keystone.....	943 Tenth St.
Kingston.....	1161 Fifth St.
Lakeside Inn.....	Lakeside
Leland.....	Sixth & E Sts.
La Mesa.....	La Mesa
Lanier.....	Third & Ash Sts.
Lincoln.....	Fourth & D Sts.
Loraine.....	1632 Fourth St.
Lynne.....	Eighth and D Sts.
McCory.....	Chula Vista
Manhattan.....	Fifth bet. D & E Sts.
Majestic.....	Sixth and F Sts.
Martin.....	Seventh & E Sts.
New Russ.....	Third & E Sts.
New York.....	Sixth & D Sts.
New Arlington.....	Fifth & B Sts.
Normandie.....	825 Fifth St.
Nye.....	1041 Sixth St.
Onyx.....	Fifth St., near F St.
Ramona.....	Ramona, Cal.
Raymond.....	Sixth & H Sts.
Rex.....	1521 C St.
Richelieu.....	1055 Fifth St.
Richmond.....	Second & F Sts.

REAL ESTATE

California Ranch & Home Co.

We have some beautiful New Lots 50x
140 with water at \$150. each.
Terms \$5.00 Per Month

Home 1533 Main 2076

872 SIXTH STREET

SAN DIEGO, CALIFORNIA

THE MACRATE-CAYCE CO.

REAL ESTATE, INVESTMENTS,
INSURANCE

1032 Fourth St. U. S. Grant Hotel Bldg.

Chas. F. Mohnike

Chula Vista Real Estate

AND LOANS

Main 363
Home 4816

1021 Fourth Street

M. HALL

REAL ESTATE AND INSURANCE

1310 D STREET

Reference
Merchants National Bank

Main 552

Home 4497

Sunset Main 4407

Home 3682

NELSON MARTIN

BUSINESS BROKER AND INVESTMENTS

1065 Second Street

San Diego, Cal.

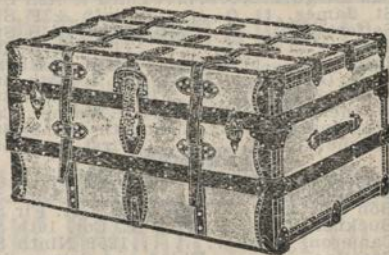
HOTELS—Continued

Robinson Julian
Roxbury 729 Seventh St.
San Diego Third & Ash Sts.
St. James Sixth & F Sts.
Seifert Fifth & B Sts.
Tioga Third & B Sts.
Troy 1055 Sixth St.
U. S. Grant D St. bet. 3rd 4th Sts.
Upas Fifth & Upas Sts.
Warner's Hot Springs Warner, Cal.
Washington Fourth and F Sts.
Wayne First & A Sts.

APARTMENTS.

Amelia Apartments 901 Tenth St.
Balmoral, The 2165 Second St.
Bon Air, The 4th N. E. Cor. Fir St.
Buckner, The F, S. E. Cor. 10th St.
Cameron, Alex. 1250 Ninth St.
Catalina Third and Spruce Sts.
Costa Vista Third and Cedar
Cordona 2831 H St.
Crest Fifth and University
Dahlia Twenty-Sixth St. & Logan Av.
Elk Apartments 1665 Ninth St.
Fanita Apartments 620 D St.
Florette, The—N. E. Cor. Front and
Grape Sts.
Frances Apartments 1835 D St.
Greylock Hall 2150 First St.
Hamilton, The 941 Eleventh St.
Harveyborgh, The 2017 First St.
Hill, Mrs. Laura E. 1440 First St.
Iris 5th bet. Hawthorne & Ivy Sts.
Ivanhoe Apartments 1439 Ninth St.
La Vista Apts. D St. Cor. 22nd St.
Lee, The Ninth and B
Leslie, The 3272 Fourth St.
Loomis, Junction Park & Univ. Bldgs.
McClung Apartments 741 Twelfth St.
Mason, The Third and F Sts.
Marine View, The 2100 First St.
Newbery 1440 First St.
Ohio Apartments 1010 Fifteenth St.
Ormond, The 203 Twenty-first St.
Park View, The 1555 Eighth St.
Princess 2130 First St.
Purrier Apartments 2022 Tyler St.
Roosevelt, The 906 Eleventh St.
Rudolph, The 20th, S. W. Cor. I St.
Savoy, The 1731 D St.
Soler Fifth and Thorn
Sparks 4242 Campus
Thorbus Apartments 1430 Seventh St.
Touraine Apartments 1942 F St.
Waldorf, The 1955 E St.
Victoria Apartments 1069 Tenth St.
Vista Granda Fifth & Olive Sts.

HEADQUARTERS FOR



TRUNKS, SUIT CASES, TRAVELING BAGS
AND

LADIES' HAND BAGS

"SEE US BEFORE YOU BUY"

PACIFIC TRUNK & BAG CO.

GROSSE BROS., Props.

1429 F Street,

Bet. 5th and 6th Streets

WHITTALLS RUGS

Are Strong and Pretty. One Firm
Sell 'em in this City

The Benbough Furniture Co.

5th & B

Brewster Buffet

HOMER FENTERS, Prop.

1065 Fourth Street

SAN DIEGO,

CALIFORNIA

FIRE ALARM BOXES

The location of a fire in San Diego is indicated by a whistle at the power house. For example: Box 19 would be indicated by two short blasts, about 5 seconds intermission, then 9 short blasts.

To send in fire alarm, break glass, tian the key and open the large door. Pull down hook once and let go.

* Telephone Signal—No alarm box at location. Fire alarm boxes at all other locations.

Telephone Fire Calls

Sunset Main 482 Home 2511

Engine Houses

No. 1 Second and E	No. 5 Ninth and Univ'st
No. 2 Tenth and B	No. 6 Twenty-third & F
No. 3 Fifth and Palm	No. 7 Kearney & Sicard
No. 4 Eighth and J	No. 8 Park Blvd & Mead
12 Fifth & B	*292 Santa Fe Wh
121 Fourth & A	31 Front & A
123 Second & B	311 State & B
124 Sixth & A	32 India & Ash
125 Seventh & B	321 Columbia & Cedar
13 Fourth & C	*323 Arctic & Date
132 Sixth & C	34 4th & Beech
14 Fifth & D	341 5th & Ash
141 Seventh & D	*342 3rd & Date
142 Ninth & D	343 1st & Cedar
15 Sixth & E	35 4th & Fir
151 Fourth & E	351 1st & Grape
16 Fifth & F	36 Union & Elm
161 Third & F	*361 India & Grape.
162 Eighth & F	37 8th & Beech
*163 Tenth & F	38 State & Ivy
164 Sixth & G	381 2nd & Ivy
165 Fourth & G	382 India & Maple
17 Fifth & H	383 India & Quince
171 Fourth & I	384 India & Win-der.
172 Sixth & I	*385 Union & Quince.
18 Fifth & J	39 1st & Laurel
181 Fourth & K	41 10th & M
182 Sixth & K	411 11th & K
*19 Fifth & L	412 13th & M
191 Seventh & L	413 8th & J
*192 Pac C S S Wh	414 8th & H
21 Third & H	42 11th & E
*212 Whf ft of 7th	43 14th & C
23 Third & J	431 17th & C
24 First & I	432 10th & B
241 State & H	*434 Russ H Sch'l
242 First & G	*435 Children's H
25 Third & D	45 11th & H
251 Second & E	*451 13th & I
26 Front & D	46 16th & H
27 Union & F	
271 Arctic & F	
28 India & D	
29 Atlantic & H	
*291 Sreckels Wh	

LOOK

FOR THE NEWS WAGONS

NEWSPAPERS

From All Cities and All
Parts of the World

Get your Home Papers
With all the Latest

News from
Home

All The Papers
All The Time

All the Latest Magazines and Periodicals

STANDS:

Cor. Fifth and D Streets

Cor. Fifth and F Streets

Cor. Fourth and D Streets

Opposite U. S. Grant Hotel

Ralph M. Childs' News Wagons

Ralph M. Childs, Mgr. San Diego, Calif.

- *461 19th & I
- 47 14th & K
- 471 20th & K
- 48 16th & N
- 49 14th & F
- 51 23rd & F
- 511 25th & H
- 52 20th & D
- 521 20th & G
- 523 18th & F
- *524 City Stables
- 53 24th & C
- 54 26th & D
- 56 27th & B
- *561 29th & G
- *562 30th & E
- 57 29th & Beech
- *571 Ida & A
- *572 31st & Cedar
- *573 Dale & Elm
- 58 30th & Juniper.
- *581 Ida & Grape
- 59 30th & Upas
- 61 22nd & J
- 611 22nd & N
- 62 Pierce & Sigsbee
- 621 National & Beardsley
- 63 Dewey & Logan
- 631 Newton & Evans.
- 632 Jullan & Dewey.
- *635 Dewey & R.
- 64 25th & L
- 641 27th & L
- 65 30th & M
- 67 31st & J
- *671 28th & J
- *68 26th & I
- *69 33rd & J
- 7 5th & Palm
- 71 4th & Maple
- *712 5th & Juniper
- 72 2nd & Spruce
- *721 Albross & Thorne
- 73 4th & Walnut
- 731 6th & Upas
- *732 1st & Brooks
- 74 4th & Penn.
- 741 1st & Robin'n
- 75 2nd & Washington.
- *751 Co. Hospital
- 752 Washington & Eagle.
- *753 Sutter & Goldfinch.
- *754 3rd & Stockton
- 76 Lewis & Ingalls.
- *761 Altura & Sierra Vista
- *762 Boone & Pringle.
- *78 Sunset Blvd & Howard.
- 8 9th & Univ'ty
- 81 7th & Penns'a
- 811 5th & Univ'ty
- 812 Lincoln & Vermont.
- 813 Center & University.
- 814 Utah & Lincoln.
- 815 Idaho & Madison.
- *816 Texas & Landis.
- 817 St. Joseph's Hospital.
- 82 Vermont & Pennsylvania.
- 83 Cleveland & Lincoln.
- *831 Louisiana & Lincoln.
- *832 Iowa & Lincoln.
- 84 Park Blvd. & El Cajon.
- *841 Polk & Georgia.
- *842 Texas & El Cajon.
- *843 Nebraska & El Cajon.
- 85 Park Blvd. & Monroe.
- *851 Alabama & Meade.
- 86 Park Blvd. & Adams.
- 87 Maryland & Monroe.
- *871 Maryland & Van Buren.
- 89 Park Blvd. & Cypress.
- 9 Kearney & Sicard.

The Daniel Co.

Jewelers

WATCH FOR OUR WINDOW DISPLAY OF NATIVE GEMS

Jewelry of all Kinds

Full Line of
NATIVE GEMS

SOUVENIR SPOONS

Let US do your Watch
and Jewelry Re-
pairing

All Work Guaranteed
Prices Reasonable

SUNSET 2997

HOME 1370

1022 Fifth Street,

San Diego, : California

Opposite American National Bank Building

- | | |
|---------------------------|------------------------|
| 911 28th & Frank-
lin. | 94 32nd & Grand |
| 911 Evans &
Harrison. | *941 31st & Main |
| *12 32nd & Clay | *95 26th & Pierce |
| 92 26th & Grand | *96 32nd &
Greeley. |
| 93 29th & Na- | *97 Brewery. |

BANKS.

- American National Bank—5th bet. C and D Sts.
Bank of Commerce and Trust Co.—5th and E Sts.
Blochman Banking Co.—635 5th St.
Citizens' Savings Bank—1040 5th St.
First National Bank—5th and E Sts.
Marine National Bank—5th St., near D.
Merchants' National Bank—5th and D.
San Diego Savings Bank—5th and F.
Southern Trust and Savings Bank—Grant Hotel, 4th and D Sts.
University Avenue Bank—1448 University Ave.

TELEPHONE OFFICES.

- Home Telephone Co.—1027 6th St.
Pacific Telephone and Telegraph Co.—953 6th St.

EXPRESS COMPANIES.

- Wells Fargo Co.—Cor. 6th and F Sts.

PUBLIC BUILDINGS.

- City Hall—S. W. Cor. 5th and G Sts.
Court House—D St. bet. Front and Union Sts.
Public Library—E St. bet. 8th and 9th
Postoffice—S. W. Cor. 8th and F Sts.
TRANSFER COMPANIES.
Pacific Transfer Co.—3rd & C Sts.
San Diego Transfer Co.—Cor. 4th and C Sts.

THEATRES.

- Empress—6th and B Sts.
Crystal Theatre—E St., bet. 6th and 7th Sts.
Dream Theatre—5th St., near F.
Empire—4th and F Sts.
Grand—5th bet. B and C Sts.
Pickwick—4th bet. C and D Sts.
Queen—5th bet. A and B Sts.
Princess—4th St., bet. B and C.
Savoy Theatre—Cor. 3rd and C Sts.
Isis Theatre—4th St., near C.
Mirror Theatre—S. E. Cor. 3rd and C Sts.

EXCURSION TRIPS.

- Auto Service Co.—1340 D St.
Dodge's Scenic Trips—4th and C Sts.

One of
Our
Cutters



NAYLOR GEM CO.

MINERS & CUTTERS OF PRECIOUS STONES



Our
Location

1250 D Street, U. S. Grant Hotel Building, San Diego, Cal.

BUY NATIVE SOUTHERN CALIFORNIA STONES

DIRECT FROM MINERS AND CUTTERS

We are the most extensive miners of precious stones on the Coast and have one of the best equipped lapidary plants in Southern California, and are associated with one of the largest jewelry manufacturing establishments in the West, who use many thousands carats of our output annually. Visiting tourists are welcome to visit our establishment while in San Diego and will take great pleasure in showing you native Southern California Gems, both cut and in the rough, and how we cut them. We have our own mines of Tourmaline, Kunzite, Beryl, Turquoise, Opal, Hyacinth and Garnet.

ONE OF THE SIGHTS OF THE CITY



Burnell's Curiosity Store

ESTABLISHED IN 1887

1045 SIXTH ST. BET. C AND D STS.

SAN DIEGO, CAL.

MEXICAN

CURIOSITIES

INDIAN

AND SOUVENIR GOODS

CALIFORNIA GEM STONES AND PEARLS

MAKERS OF HAND CARVED AND ART LEATHER GOODS

WHOLESALE AND RETAIL

Nimble Hints says:

"When you Chuze a Suit uv Cloze or a Wife, get one that is not Loud, haz a Good Shaip, will not Wrinkl easily and Remember that Both must be Pressed Often."

The same can be had at

W. E. ROSS & CO., TAILORS

CLEANING AND PRESSING
Home 3463

403 H STREET

SAN DIEGO, CALIFORNIA

SECRET SOCIETIES.

- A. O. U. W.**—G. A. R. Hall, H St.
Eagles—Eagles Hall, 1521 H St.
Elks—Elks' Building, N. W. Cor 2nd and E Sts.
Ben Hur (Jewel Court)—Kastle Hall, 6th St.
Foresters—G. A. R. Hall.
Fraternal Brotherhood, No. 12—Fraternal Brotherhood Hall, 5th and A.
Golden Rule Fraternity—G. A. R. Hall.
G. A. E.—G. A. R. Hall.
I. O. O. F.
San Diego Lodge—H St. bet. 5th and 6th Sts.
Sunset Lodge—Germania Hall, 9th and G Sts.
Knight Templars—Masonic Temple, 5th and Ash.
Knights and Ladies of Security—Meets 2d and 4th Wednesday evenings at Fraternal Brotherhood hall, 5th St., bet. A and Ash.
Knights of Columbus—Germania Hall, S. W. Cor. G and 9th Sts.
Knights of Pythias—3rd and E Sts.
K. O. T. M.—Fraternal Brotherhood Hall, 5th and A Sts.
I. O. Foresters—I. O. O. F. Hall, 1428 F St.
I. O. E. B. Yonker Lodge No. 370, Sam Schiller, Sec'y.
Modern National Reserve—Kastle Hall, 631 6th Street.
Loyal Order of Moose, San Diego Lodge No. 508—K. of P. Hall, 3rd and E Sts.
Modern Woodmen of America—Kastle Hall, 631 6th St.
Order of Herman's Sons—Germania Hall, S. W. Cor. 9th and G Sts.
Royal Arcanum—G. A. R. Hall, 812 5th St.
Royal Neighbors—G. A. R. Hall, 812 5th St.
United Spanish War Veterans—G. A. R. Hall, 5th St.
Woodmen of the World—K. of P. Hall, 3rd and E Sts.
Red Men—Improved Order of Red Men, K. P. Hall, 6th and F Sts.
Concordia Turnverein—Germania Hall, 9th and G Sts.
German Ladies' Society—Germania Hall, 9th and G Sts.
Credit Men's Association—403-4 Union Bldg.
Ladies' Auxiliary of Y. M. C. A.—N. E. Cor. 8th and C Sts.

What is your Health Worth?

Wouldn't you like to regain your health and learn a Profession at the same time which will bring you from \$3,000 to \$10,000 a year?

Isn't your Health Worth That?

Investigate The

San Diego School of Chiropractic

1550 Third Street

SAN DIEGO, CALIFORNIA

NON-SECRET ORGANIZATIONS

CONTINUED

- Ladies' Pioneer Society of San Diego
Merchants' Ass'n.—704 Tinklen Build-
San Diego Floral Association.
San Diego Stadt-Vert. and Germania
Hall—S. W. Cor. 9th and G Sts.
Socialist Party of America—Harmony
Hall, 752 5th St.
Southern California Society of Sons of
American Revolution—A. E. Dodson,
Pres.; res. 3872 3rd St.
Y. M. C. A.—N. E. Cor 8th and C
Y. W. C. A.—Thum Block, N. W. Cor.
7th and D Sts.

CEMETERIES.

- Catholic Cemetery—West and Wash-
ington Sts.
G. A. R. Cemetery—See Mt. Hope.
Greenwood Cemetery—H and 40th Sts.
Jewish Cemetery—See Mt. Hope.
Masonic Cemetery—See Mt. Hope.
Mount Hope Cemetery—end of 32nd
and M St. car line.
Odd Fellows' Cemetery—See Mt. Hope.
U. S. Cemetery—Point Loma.

HOSPITALS.

- Agnew Sanitarium—N. E. Cor. 5th and
Beech Streets.
Paradise Valley Sanitarium—National
City.
St. Joseph Sanitarium—Conducted by
the Sisters of Mercy, University Ave. and
County Hospital—University Heights.

CITY OFFICERS.

- Mayor—James E. Wadham.
City Clerk—Allen H. Wright.
City Attorney—W. R. Andrews.
City Engineer—E. M. Capps.
Chief Police—J. K. Wilson.
Chief Fire Department—Louis Alm-
gren, Jr.
City Auditor—J. N. Newkirk.
City Treasurer and Tax Collector—
Don M. Stewart.
City Council—A. E. Dodson, John L.
Sehon, Maj. H. R. Fay, Percival E.
Woods, D. K. Adams.

COUNTY OFFICERS.

- County Clerk—J. T. Butler.
Sheriff—Fred M. Jennings.
District Attorney—H. S. Utley.
County Recorder—John H. Ferry.
County Auditor—C. R. Hammond.
County Assessor—M. M. Moulton.
Tax Collector—A. F. Cornell.
Coroner—S. W. Bell.
County Treasurer—John F. Schwartz.

For Souvenirs, Curios and old Relics

With a Free Museum of Natural History
Specimens See

Glazier's Shell Shop

702 D STREET

Imported Austrian Beads
Manufacturers of Shell and Bead Jewelry
Latest Souvenir Post Cards of San
Diego---Shells Polished

Sunset Main 4407

Home 3682

Red Cross Employment Agency

NELSON MARTIN, Manager

Guarantees you good service and don't cost you one cent. When in need of help of any kind ring us up. New office; new people. Come in and see us in the new office, Ground Floor.

1065 Second Street

SAN DIEGO, CALIFORNIA

PARKS.

Balboa Park, Formerly City Park—1400 acres. From A to Upas, bet. 6th and 28th Streets.

Golden Hill Section—25th and A.

Pavilion—End Pavilion car line.

The Plaza—D St., bet. 3rd and 4th Sts.

New Town Park—F and Columbia.

Mission Cliff Park—End Pavilion car line.

K St. Park—13th and K Sts.

Base Ball Grounds—Sicard and Newton Ave. Logan Height car.

INFORMATION BUREAU.

Chamber of Commerce—Elks' Building, 2d and D Sts.

Balloon Route Agency—D St., bet. 4th and 5th Streets.

TELEGRAPH OFFICES.

Postal Telegraph Co.—5th and E Sts.

Western Union Telegraph Co.—936 5th St.

STEAMSHIP TICKET OFFICES.

Pacific Coast Steamship Co.—Union Building, 3rd and D Sts.

Meteor Boat Co.—1322 F St.

Compania Naviera Del Pacifico S. A.—1422 F.

North Pacific S. S. Co.—1122 D St.

American Hawaiian S. S. Co.—210 Granger Bldg.

Pacific Navigation Co.—Cor 3rd & D St

REAL ESTATE FIRMS

John Burnham & Co., 212-14 Timken.

Elmo Riddell & Co., 1725 D St.

Dibble Realty Co., 1053 4th St.

Gray & Quackenbush, 207 Scripps Bldg.

Martha Ingersoll Robinson, 520 Granger Block.

F. L. Botsford, Corner 3d and D Sts.

Macrate Cayse Co., 1031 4th St.

E. A. Pond, 908 6th St.

Homeland Improvement Co., 1321 D St.

M. Hall, 1310 D St.

Cal. Ranch & Home Co., Cor. 6th and E

Chas. F. Mohnike, 1021 4th St.

Montana Realty Co., 1044 2d St.

San Diego Securities Co., Cor. 6th and E

Going & Mollison, 4th St. Grant Hotel.

McFadden & Buxton, 1109-11 D St.

CLOTHIERS & TAILORS

"Nuthin But Cloz"
For Men and Young Men
STANWOOD-BROWN CO.
(Incorporated)
1051 Fifth Street

High Grade Haberdashery

Pacific, Home
Main Smith's Phone,
3583 4383

Walter C. Smith, 858-860 Fifth Street
General Manager San Diego, Cal.

CLEANING, SHOP PHONE
PRESSING, REPAIRING SUNSET 1954

HOWARD W. HINMAN
FINE TAILORING
956 SEVENTH STREET
SAN DIEGO, CALIFORNIA

Suits Made to Order

Best of Work Guaranteed

Complete Stock of

Domestic and Foreign Goods

JOHN LUNEBERG

THE TAILOR

1034 Third Street San Diego, Cal.

SAN DIEGO CLUBS.

- Channing Club—949 9th St.
Columbia Bowling Club—Foot of C St.
Coronado Country Club.
Junior Yacht Club—Foot of 28th St.
Outlook Club—949 9th St.
San Diego Club—949 9th St.
University Club—1244 A St.
Bay City Athletic Club—933 2nd St...
Carmen's Club—Cor. 4th and D Sts...
Cabrillo Club—Cor. 7th and E Sts...
Country Club—Indiana St. and Myrtle Ave. University Heights.
Cuyamaca Club—6th floor Union Building, S. W. Cor. 3rd and D Sts.
Florence Heights Improvement Club—J. N. Newkirk, Pres.; res. 3430 5th St.
Logan Heights Improvement Club—C. C. Park, Sec., 1529 D St.
Olympia Rowing Club—Atlantic St., near D St.
Pacific Coast Automobile Club—J. H. Babcock, Pres.; res. Mission Bay Park.
San Diego Club—Club House on 9th St. bet. D and E Sts.
San Diego Yacht Club—Foot of Hawthorne St.
San Diego Rowing Club—P. C. S. S. wharf.
University Heights Improvement Club—Between Lincoln and Campus Aves. on Park Blvd.
Washington Heights Club—D. P. Griswold, Sec.; res. Goldfinch and Washington Sts.
Wednesday Club—Club House, 6th and Pennsylvania Ave.
Y. M. C. A. Rowing Club—P. C. S. S. wharf.
Zlac Rowing Club—Foot of H St.

CAFES.

- Rudder's Cafe—Union Bldg., cor. 3rd St.
Crane's Restaurant—5th St. bet. B & C.
Manhattan Restaurant—D St. bet. 5th and 6th Sts.
The Pelican—Ocean Bay Beach.
The Casino—Ocean Beach, Cal.
Oyster Loaf—1228 C St., near 4th St.
Berger's Cafe—4th and C Sts.
Sargent's Cafe—4th and D Sts.

CAFETERIAS

- Dirigo Cafeteria—1040 3rd St., bet. C & D
Furitan Cafeteria—928 7th St., bet D & E
Opera Cafeteria—1126 4th St.
Vegetarian Cafeteria—Cor. 5th & A Sts.
Silver Gate Cafeteria—1310 5th St.

Printing



*—The other fellow may do
better work than I*

—He may do it cheaper too

*—But you can not know un-
til you have given me a trial.*

Albert G. Rogers,

PRINTER

824 SECOND STREET

SAN DIEGO, CALIFORNIA

HOME PHONE 4492

POINTS OF INTEREST.

Alpine—Half-way between Lakeside and Descanso on stage line about thirty miles from San, Diego. Fine farming section, fruits and olives. Good hotel. Population 350.

Banner—Five miles from Julian. Gold mine town, with ten-stamp mill.

Chula Vista—A pleasant car-ride from San Diego where large orange and lemon orchards and a beautiful view may be seen. Two large fruit packing houses are to be found.

Del Mar by the Sea—The million-dollar watering place of the Pacific on the main line of the Santa Fe, twenty miles north of San Diego. No other resort in America can boast as perfect a climate or grander natural surroundings. The Stratford Inn is as perfect as money and experienced management can make it. It has a thoroughly up-to-date bath-house, with fine plunge, costing \$50,000, and the finest mile and a half beach on the coast—surf bathing the year around. Boating and canoeing in the lagoons and duck and quail hunting make it the ideal resort for the sportsman.

El Cajon Canyon—The raisin grapes here are the largest export; oranges and lemons are increasing each year. A trip on train to Lakeside take in a portion of the valley.

Escondido—City of 1500, and the centre of a prosperous agricultural district. Escondido is chiefly noted for the raisin grape. Each autumn a grape festival is given.

Fallbrook—Unusually beautiful mountain scenery. On Santa Fe R. R.

Imperial Valley—Once a part of San Diego County. This wonderful fertile valley—watered by the Colorado river and its tributaries—will be directly connected with this city by the San Diego & Arizona Ry.—now under construction.

Fort Rosecrans—U. S. fortification and barracks commanding the entrance to the harbor. See Point Loma. Reached by Point Loma Ferry.

Grossmont—In visiting points of interest in and around San Diego, the tourist should not fail to visit Grossmont (elevation 1200 feet above sea level) one of the most beautiful attractions of San Diego's back country. From the top of Grossmont one beholds a magnificent

BANK DIRECTORY

Merchants National

Granger
Block

Bank

Cor. 5th &
D

SAN DIEGO

Largest SURPLUS of any Bank in San Diego

American National Bank

Capital and Surplus - \$ 150,000

Total Resources - - 1,700,000

Now located in our new Banking Room
N. E. Cor. 5th and D Streets

CITIZENS SAVINGS BANK

of San Diego, Cal.

Pays Interest on all Deposits---Paid its
Depositors \$14,859.96 During 1910.

Blochman Banking Co.

Commercial & Savings

Established 1893

Banking in ALL its Branches

635 Fifth Street San Diego, Cal.

MARINE NATIONAL BANK

SAN DIEGO, CAL.

947 Fifth St., Near D

Capital and Surplus - \$350,000

POINTS OF INTEREST—Continued

panorama of ocean, mesa and valley. One hundred and fifty miles to the north the snow-crowned head of Old Baldy is plainly visible, and in the nearer distance San Jacinto and Palomar mountains. To the east is the beautiful Cuyamaca range, covered with timber; to the south the Table Mountain of Mexico; to the west the grand old Pacific, the Coronado Islands, Point Loma, San Diego city, La Mesa and Spring Valley, while at one's feet lies the famous El Cajon Valley, fifteen miles in length and five miles in width, with its thousands of acres of vineyards, eucalyptus plantations and pleasant homes. And while enjoying the beautiful coloring of the landscape with the mountains as a background.

Julian—Situating about fifty miles away, at an altitude of 4000 feet. The cold, snowy winters are an attraction to the city man who wants a "breath of the east." Apples grown there took first prize at St. Louis Exposition, while all kinds of ranching have proven profitable. There are four stamp mills in Julian district, which handle the ore from the several mines. There is a stage line run to Foster, thirty miles away.

La Jolla—This beautiful place is becoming known as a winter resort all over the United States. The government supports here a biological station, which attracts scientists. Of interest to the tourist are the caves, where may be seen exquisite coloring, peculiar geological formations and weird figures in the stones. Take the La Jolla motor car from 4th and C Sts.

Lakeside—Fresh water resort, located 20 miles east of San Diego, on the Cuyamaca R. R.; noted for the excellent sport. Duck shooting, fishing and many other features. Here is located the famous Lakeside Inn on the shore of a beautiful fresh water lake. The Inn is a modern resort hostelry of the highest class, conducted on the American plan. The grounds adjoining the hotel comprise over 700 acres, all belonging to the Inn property. Amusement features include a sporty 9-hole golf course, cement tennis courts, croquet grounds, the famous two mile auto speedway and the lake, which is well stocked with both perch and

BANK DIRECTORY

First National Bank SAN DIEGO

Oldest Bank in San Diego
"United States Depository"
Fifth and E Streets

THE SAN DIEGO SAVINGS BANK

Cor. 5th and F Sts.
San Diego's Largest Bank
Interest Paid on Deposits

SOUTHERN TRUST and SAVINGS BANK

of San Diego, Cal.
U. S. GRANT HOTEL BUILDING
RESOURCES, \$1,600,000
COMMERCIAL & SAVINGS

LIFE INSURANCE

California National Life Insurance Co.

Timken Bldg., 6th & E

POINTS OF INTEREST—Continued

black bass. A fleet of steel row boats has just been installed.

Mesa Grande—A famous health resort 3350 feet altitude. Beautiful trees are scattered over the hills. Has famous mines, which produce tourmalines, topaz and other semi-precious stones in abundance. About a hundred families of Indians are scattered about here, being the last of the Mission Indians.

National City—On the bay below San Diego.

Ocean Beach—This is considered by many to be the most beautiful beach in Southern California. Take Ocean Beach car at 4th and D Sts. Round trip, 25 cents.

Oceanside—A popular and growing beach resort between San Diego and Los Angeles.

Old Mexico—See Tia Juana.

Old Mission—This Mission was founded by Father Junipero Serra on July 16, 1769.

Old Town—The most hallowed and historical spot in all California—where the brown-robed Franciscan, Father Junipero Serra first planted the cross in 1769—where a monument marks the spot where General Fremont first planted the United States flag in 1846. Here you will see the old chapel and the bells brought from Spain in 1802; the picturesque old dam built by the early fathers, and the first palm tree planted in California; the old grave-yard; the old jail; the first brick house; old Fort Stockton, and the "Marriage Place of Ramona," now restored to its former condition, with its thick adobe walls, heavy mission timbers, its hide-bound rafters and beautiful flowered court yard. Here you can see California as it was a hundred years ago, here the interesting story of the Missions and see the oldest collection of Indian Mission pictures in the world, besides many other interesting features. Old Town is reached by cars marked "Ramona's Home," leaving down town every twenty minutes.

Palomar Mountain—Favorite resort for huntsmen. Scenery, bracing air. Via Oceanside, thence by auto.

Point Loma—The view from the top of this promontory is said by Charles Dudley Warner to be the most beautiful in the world. On the one hand the



"Holds a Cure for Every Ill"

Dr. Chas. I. White

NATUROPATHIC PHYSICIAN

Successfully treats all Chronic and Acute Diseases.

Rheumatism, Paralysis, Nervous Prostration, Heart, Lung, Kidney, Liver, Stomach, Blood and Nerve Ailments, etc.

If sick, investigate NATUROPATHY, free of charge.

OFFICE AT

Nature Cure Institute

Cor. Third and Cedar Sts.

Main 4478

Home 3124

POINTS OF INTEREST—Continued

boundless Pacific; on the other the blue, blue San Diego bay with Coronado, North Island and in the distance the mountains of Old Mexico. The drive, which may be taken by automobile or tally-ho over the Point Loma Boulevard, may include Fort Rosecrans, the Quarantine Station and the International Theosophical Headquarters, of which Madame Katherine Tingley is the Head, the U. S. Wireless Station the U. S. Cemetery and Bennington Monument and the Light House. These points are also reached by Point Loma Ferry. To visit the International Theosophical Headquarters should apply at the Point Loma Bungalow and Tent Village, register, and secure admission cards. The Theosophical Grounds are open from 10 A. M. to 4 P. M. daily, except Sundays.

Pacific Beach—This beautiful beach is about a mile from the town of the name on the La Jolla car line.

Quarantine Station—First stopping place for all boats entering the harbor. Reached by Point Loma Ferry.

Sweetwater Dam—One of the sources of San Diego water supply. An excellent piece of masonry, and pretty sheet of water and country scenery. May be visited on return from Tia Juana, by steam train, or by auto or tally ho.

Tia Juana—This trip is taken by ninety percent of the visitors to San Diego, as it is only a drive of a few miles to a "foreign country." The shops are of great interest, containing all kinds of curios. One person is allowed to bring back to the United States one dollar's worth of goods free of duty. Good Mexican dinners cooked by a Chinaman and served by a Frenchman, may be had for 50 cents. The trip may be taken by tally-ho, automobile, or by the steam train leaving the foot of 6th street, (for which take the 32d and M car at 5th and D streets at 9:18 a. m.) Fare by train, 90 cents. Train may be made to include the Sweetwater Dam on return trip.

Warner's Hot Springs—Situated on Warner's ranch, about seventy miles inland, at an altitude of 3300 feet.

Imperial Beach—One of the prettiest and most attractive beaches around San Diego is Imperial. A good hotel and charming residences. The launch ride

*10 miles
1/2 way by launch
stage
San J. 10 20 30
launch leaves 9:11:40*

Servself Cafeteria

Servself System
and
Short Orners

Open every day continuously from 6:30
A. M. to 7:30 P. M.

Our place is small, but we are there
with the EATS.

Prompt, Quick and Courteous Service

1646 D Street

SAN DIEGO, - CALIFORNIA

Near Cor. 8th. Under Hotel Lynne



Eye Sight Specialists

OVER 20 YEARS EXPERIENCE

Brown Optical Co.

1022 5TH STREET.

Lenses
Duplicated



Eyes Examined
by the Latest
Methods

POINTS OF INTEREST—Continued

down the bay is exhilarating, and one of the pleasant trips to be taken. The steamer "Imperial" starts from McKinley wharf, foot of H street. Take Coronado car at Fifth and D streets.

South San Diego—This little village down the bay is adjacent to Imperial Beach and has many of the same advantages. Summer or winter, spring or fall, South San Diego is "livable." (For transportation, see "Imperial Beach.")

POINTS OF INTEREST IN THE CITY

Book-Lover's Shop—The most beautiful and unique Book-store in Southern California, having a Lecture Hall in connection with it where men of prominence in great movements and affairs come to lecture. This store is one that tourists should visit. Gift books, travel books, late novels, stationery, post cards and a circulating library. Home of the fifty cent Reprint Fiction. N. W. Cor. 3rd and B Sts. 500 feet north of U. S. Grant Hotel.

Brooklyn Heights—On the east side of the City Park. Take 30th and Juniper car at 4th and D.

Chamber of Commerce—The exhibits here will prove of great interest. Information will be courteously given and all questions will be correctly answered. Hall is filled with San Diego products and manufactories. Second and D Sts.

Chamber of Mines—Information concerning the mining output of the county and an excellent collection of the minerals. Chamber of Commerce.

Balboa Park, formerly City Park—1400 acres in the centre of the city, partially improved. Lookout Point is the most visited of any portion, because of the magnificent view. A short distance north may be found the birds, a collection made by the late J. W. Sefton. The down-town entrance is from the 6th and Date streets. Pavilion car to Date street.

Coronado—A fashionable all-the-year-around resort, with fine residences, beautiful hotel and splendid beach. Tent City, on the peninsula below, is open from June to September. Bathing in both bay and ocean. Reached by ferry, for which take Coronado car at 5th and D streets.

LOS BAÑOS BATH HOUSE

OPPOSITE SANTA FE STATION
FOOT OF D STREET

Purest Sea Water Elegant Plunge
Courteous Attendants

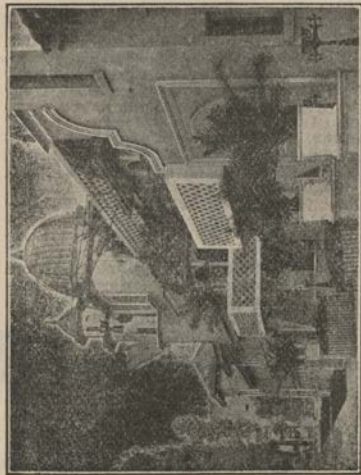
SAN DIEGO, CALIFORNIA

Los Baños have a fine Plunge Tank, containing 200,000 gallons of the purest sea water, which is constantly renewing and assures a correct temperature. This plunge is the children's delight. Bring or send yours down, then come to see them at their play.

Hot and Cold Sea Water Tub Baths
25c; Plunge, 25c; Small Children 15c

Visitors Always Welcome

JAS. L. STROUP, Lessee and Gen. Manager



Florence Heights—One of the select residence sections. From the car may be seen the Putnam Gardens and Mitchell Place. Washington or Mission Hills car at 3d and D streets.

Golden Hill—Charming residences and wonderful view of bay make Golden Hill a favorite car-ride. "Golden Hill Park," an improved section of City Park, may be reached by walking north from 25th street. Twenty-fifth and D car at 5th and D.

Glazier's Shell Shop—One of the most interesting places for the tourist to visit. Sea Shells, Coral, Starfish, Shell Jewelry, Relics, Curios, Souvenirs, Portier Beads and Post Cards. 702 D street.

Los Baños—Sea water bathing every day in the year. An artistic mission style building wherein the young and the old are the envy of the far famed mermaids, as they sport in the fountain of youth, doing the high dive and shooting the shutes. D and Arctic Streets, transfer to car No. 2 from 5th and D Streets.

Normal Heights—Just outside of the city limits. Take Pavillion car and transfer to Adams Ave. car.

Normal School—Supported by the State. The average attendance is between 600 and 700 pupils. Take Pailion car at 5th and D.

Ostrich Farm—Farm and feather factory, is located opposite the park at the end of the Pailion car line. Admission 10 cents.

Pavilion Park—Maintained at the expense of the S. D. Electric Railway Co. A large building, with good dance hall and commodious plazas; is at the disposal of guests. The grounds are exquisitely kept with a bird house, fish pond and silk museum. The view down into Mission Valley is magnificent.

Silk Museum—Here may be seen the whole process of silk manufacture, from the worms making cocoons to the beautiful fabric ready for use. Occupies building near the Pavillion.

South Park—Just south of Brooklyn Heights and east of Golden Hill. Thirtieth and Juniper St. car at 5th and D Sts., and huns to Brooklyn Heights.

University Heights—A comparatively new, but exceedingly prosperous part of town. It contains the Normal School, St. Joseph's Sanitarium, the Pavillion Park and ostrich farm.

NEW COMERS ATTENTION

As Pioneers, with over 25 years residence in San Diego Co. and being well acquainted with the same, and all of the conditions, can give to prospective settlers and others, the most full and reliable information, that can be obtained in this City. See Gray or Quackenbush, at 207 Scripps Building, Corner 6th and C Streets, San Diego, Cal., or call Home Phone 4120.

Sale of

FURS

Now On At

FACTORY PRICES

While They Last

Entire Stock of Millinery at
Half Price

PROF. G. A. WILLIAMS

Hair Store and Toilet Parlors

1018-1024

TELEPHONES:

SIXTH STREET

Main 757

Home 1057

TABLE OF ELEVATIONS AND DISTANCES

From San Diego of different localities
in San Diego county:

	Dis- tance miles.	Eleva- tion feet.
Alpine	30	1850
Banner	63	2775
Bernardo	28	300
Buckman Springs.....	63	3375
Campo	51	2550
Chula Vista.....	8	100
Cuyamaca	54	4677
Dehesa	23	670
Del Mar.....	23	114
Descanso	42	3480
Dulzura	30	1200
El Cajon.....	15	463
Encinitas	29	81
Escondido	33	700
Fallbrook	60	306
Foster	24	452
Jamul	21	1700
Julian	58	4300
Laguna	58	5580
La Jolla	16	25
Lakeside	21	391
La Mesa	11	530
Lemon Grove.....	9	440
National City.....	4	19
Oceanside	42	44
Old Town	3	14
Pala	58	411
Pt. Loma, Old Lighthouse..	12	422
Ramona	37	1450
Santa Ysabel.....	51	2987
San Pasqual	36	376
Sheckler's	35	800
Spring Valley.....	12	559
Valley Center.....	45	1200
Warner's Hot Springs.....	67	3300
Wynola	52	3655

TABLE OF CONTENTS
AND INDEXES

THE SAN DIEGO ADVERTISING AGENCY

OLDEST
ESTABLISHED
AGENCY
IN
SAN DIEGO

ADVERTISING
SPECIALISTS

WRITING
DESIGNING
PLACING
NEWSPAPER
BOOKLETS
ADV. NOVELTIES
SOLICITING

816 TIMKEN BUILDING

Phone Main 831

Consult Us Before You Do Any
More Advertising

CHURCHES.

Adventist—Seventh day, G and 18th streets, A. G. Christlonsen, pastor; res. City Heights.

BAPTIST.

Bethel Baptist Church—(Swedish) N. E. Cor. 16th and E streets, Rev. C. M. Nelson, pastor; res. 2019 Russ Blvd.

First Baptist Church—N. W. Cor. 10th and E Sts., Rev. W. H. Geistwelt; 2139 2nd St.

First Baptist Church (colored)—N. W. Cor. 1st and B Sts., Rev. W. A. Mitchell, pastor; res. 705 Front St.

Grand Avenue Baptist Church—Rev. J. B. Fox, pastor; res. 1425 Grand Ave.

Mt. Zion Baptist Church—1529 Greeley Ave., Rev. J. H. Price, pastor; res. adjoins church.

CHRISTIAN.

Central Christian Church—S. E. Cor. F and 9th Sts., Rev. W. E. Crabtree, pastor; res. 770 21st St.

University Heights Christian Church—N. E. Cor. Cleveland Ave. and Richmond St., Rev. A. Lyle De Jeanette, pastor; res. 4325 Jackdaw.

CHRISTIAN SCIENCE.

First Church of Christ—2nd and Laurel. Mrs. Chas. L. Kirtland, reader.

CONGREGATIONAL.

First Congregational Church—N. W. Cor. 6th and A Sts., Rev. Willard B. Thorp, pastor; res. 4th and A Sts.

Logan Heights Congregational Church—S. W. Cor. Sampson St. and Kearney Ave., Rev. Stephen G. Emerson, pastor; res. 878 Julian Ave.

EPISCOPAL.

All Saints Church—S. E. Cor. 6th and Pennsylvania Ave.

St. James Episcopal Church—Kearney Ave., near Evans St., Rev. A. K. Glover, rector; res. 818 Evans St.

St. Paul's Episcopal Church—S. W. Cor. 8th and C Sts.; Chas. L. Barnes, 1308 Nutmeg St.

JEWISH.

Congregational Beth Israel—N. W. Cor. 2nd and Beech Sts., A. Blochman, pres.; res. 834 9th St.

Congregation Tifereth Israel—6th and H Sts., B. A. Brilliant, Pres.

LUTHERAN.

First English Lutheran Church—2d bet. A and Ash Sts.; Geo. L. Hilerman, pastor, 1140 21st St.

SNYDER'S I. X. L. LAUNDRY

Tenth and I Streets

Phones: Home 1526; Sunset, Main 526

Yours for Good Laundry Work.

Try Us.

GAEBEL ENGRAVING
COMPANY

"Artists THAT CREATE"
The ADVERTISING CUTS
THAT BRING RESULTS

TIMKEN BUILDING
NINTH FLOOR

PANAMAS A SPECIALTY

BOSTON HAT WORKS

C. F. CRANE, Proprietor

Telephones:

Works, Home 3550

House, 5104

HATS BLOCKED AND CLEANED

Panama, Ladies' and Men's Felt Hats

838 6th Street, San Diego, Cal.

CHURCHES—Continued

German Evangelical Church—24th St. and Grant Ave., Rev. C. F. Leimbrock, pastor; res. 1025 Dewey Street.

METHODIST.

First M. E. Church—N. W. Cor. C and 9th Sts., Rev. L. T. Guild, pastor; res. 2nd and Ivy Sts. Ass't pastor, D. N. Oleson; 2220 D St.

Central M. E. Church—N. E. Cor. Sampson St. and Harrison Ave., Rev. W. G. Barron, pastor; res. 929 Sampson St.

Taylor M. E. Church—S. W. Cor. University Bldg and Campus Ave., Rev. W. W. Hull, res. 4445 Cleveland St.

City Heights M. E. Church—Stockton near Anna; F. W. Gorman, pastor, 1632 5th St.

Free Methodist Church—S. E. Cor. Beech and Front Sts.; J. A. Grant, pastor; res. 317 Beech St.

Park Place—M. E. Church South—N. W. Cor. 5th and Olive. Rev. J. T. French, pastor; res. Klauber and Monroe Sts.

German M. E. Church—N. W. Cor. 16th and I Sts., Rev. N. M. Rogatzky, pastor; res. 16th and I Sts.

African M. E. Church—1649 Front St., Rev. R. H. Harbert, pastor; res. 1647 Front St.

PRESBYTERIAN.

First Presbyterian Church—S. W. Cor. 8th and D Sts., Rev. E. F. Hallenbeck, pastor, D. D., residence 3595 6th St.

Spanish Presbyterian Church—347 13th St., Rev. Enrique Vazquez, pastor; res. 345 13th St.

United Presbyterian Church—N. W. Cor. 2nd and H Sts., Rev. S. J. Shaw, pastor; res. 3330 F St.

ROMAN CATHOLIC.

Church of the Immaculate Conception—North San Diego, Rev. Joseph C. Mesuy, pastor.

St. Joseph's Catholic Church—N. E. Cor. 3rd and Beech Sts., Rev. Bernard Smyth, pastor; res. N. W. Cor. 4th and Beech Sts.

Church of our Lady of Angels—S. W. Cor. 34th and G Sts., Rev. H. F. Quinlan, pastor; res. 24th and G Sts.

SALVATION ARMY.

Salvation Army Barracks—940 3rd St.

SPIRITUALISTS.

First Spiritualist Society—1240 7th St.
San Diego Spiritual Society—352 National Ave.

HENRY'S

RESTAURANT

OCEAN BEACH

Coney Island Clam
Chowder with the
best Fish Dinner on
the Pacific Coast for
THIRTY-FIVE CENTS

We do a General Livery Business. Fine Rigs
Good Teams, Careful Drivers



FANNING'S STABLES

FRED FANNING, Prop.
Stables 6th & A Sts. Sun. 235; Home 1235

SWEDENBORGIAN.

New Jerusalem Church—S. W. Cor.
Tyler and Campus Ave.

THEOSOPHICAL.

Universal Brotherhood and Theosophical
Society—Point Loma. Public meetings
at Isis Theatre, 4th St. bet. B and C.
H. P. B. Branch Theosophical Society—
Meets Sundays 3 p. m. at 1222 4th St.

UNITARIAN.

First Unitarian Church—Clarence J.
Harris, 943 18th St.

MISCELLANEOUS.

Church of God—537 13th St.
Church of the Nazarene—Rev. A. M.
Bowes, pastor; res. 1010 15th St.
First Friends Church—31st St. bet.
L and M Sts., Miss Susan Allan, pastor;
res. 20th, near H St.
Japanese Mission—527 3th St.
K St. Park Mission—2203 K St.
Peniel Mission—N. W. Cor. 5th and F
Sts.
Pentecost Mission—1421 H St.
Pentecostal Church—S. W. Cor. 10th
and G Sts., Rev. Percy Girvin, pastor,
res. 2380 H St.
United Brethren in Christ—752 5th
St., Rev. Homer Gallaher, pastor.
Voy Yong Gong Sue Chinese Mission—
428 3rd Street.
Latter Day Saints—Church of Jesus
Christ, of Latter Day Saints, 913 5th
St.
Universal Centre of Truth—Miss Ida
S. Proud, pastor, 3rd St., bet. Beech and
Cedar.
Y. M. C. A.—F. D. Fagg, Secretary.
Helping Hand Home—16th and H Sts.;
Pastor, Rev. E. M. Hutchens; res. 16th
and H Sts.
Joseph L. Hunter, Chaplain, Fort Rose-
crans.

3:30 PM
6 phone
or 9 AM Sunday

Home 2377.

ADDRESSES

Arnold Schneider
1669 First St.
Cor 1st & Date St.

Real Est 1142 D

fr. Escondido to Smith Mts

R.R. to Escondido via
Ocean Side

Stop over at Escondido Hotel
next day by stage

Smith Mts. offers the same
accommodation about as
Warner's

Smith Mts in Palomar

go from Oceanside?

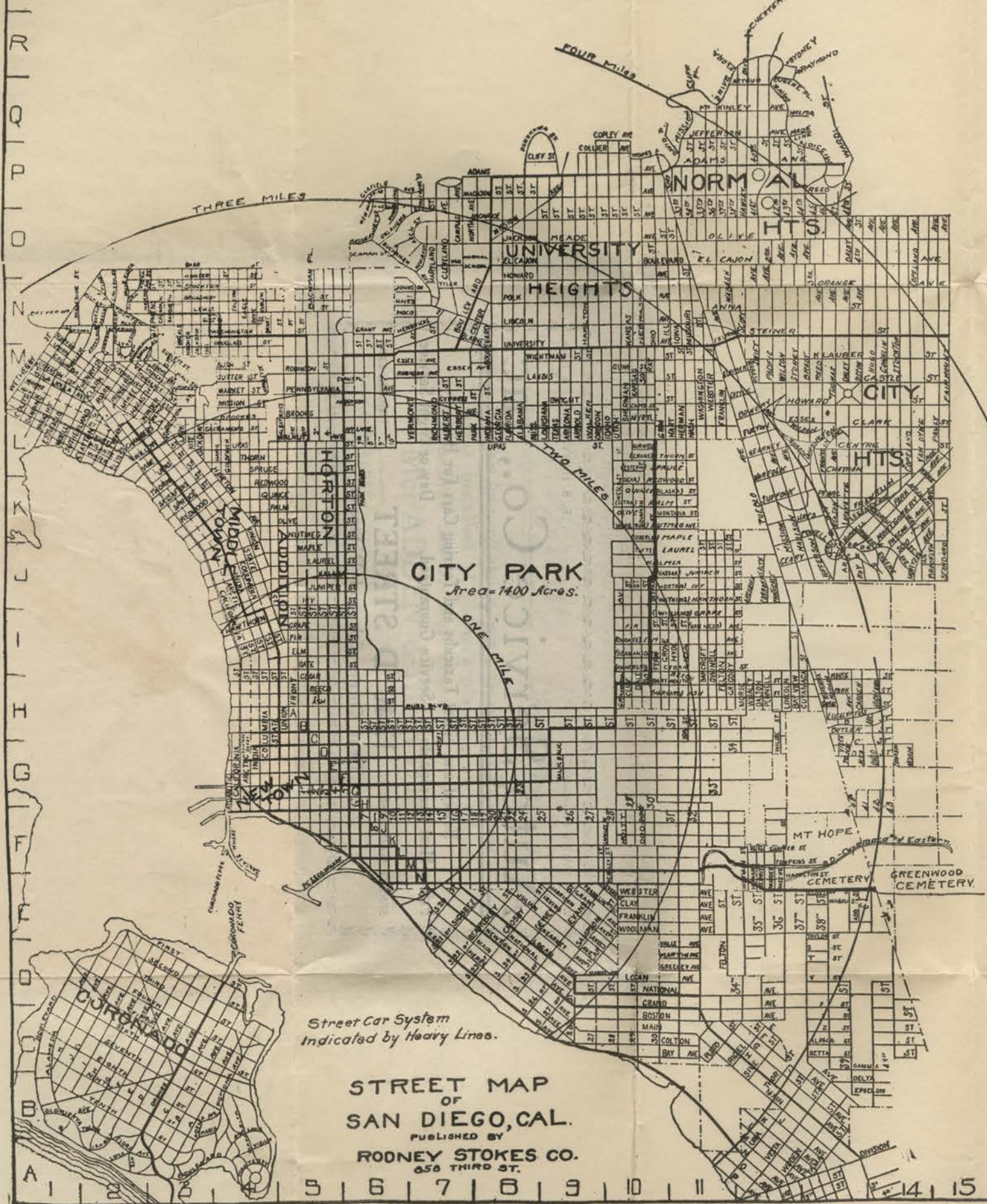
Telephone to Escondido

Mr. Bailey & wife Mrs

MEMORANDUM

See Ed Fletcher T & D.
Rest. about Palomar

INDEX	22 nd ST	9F	46 th ST	13-0	ARTHUR	12Q	BRANT	3N	CLAYTON	2L	DEPT. BEECH	10H	ELEVENTH	7F	FLORIDA	9L	GRAPE	5T	HENSLEY	10F	PENN.	12G
	23 rd ST	9F	47 th ST	3-0	ASH	6H	BROADWAY	4N	CLEVELAND	8N	DATE	61-91	ELM	5B	FORTYFIFTH	11-13C	GREENE	9D	HERBERT	8L	PENNSYLVANIA	12H
	24 th ST	9F	48 th ST	13-0	ATLANTIC	4G	BROOKLYN	15U	CLIFF	9F-8H	DAVID PL	10P	EPSELON	13B	FORTYFIRST	11-13C	GREGORY	10H	HERMAN	10L	PENNSYLVANIA	6M
	25 th ST	9F					BROOKS	6L	CLIFF PL	11Q	DELAWARE	7P	ESSEX	7M-2L	FOURTEENTH	8F	GRIM	10I	HIGHLAND	13H	PIERCE	8C
	26 th ST	9F					BROOKS	6L	COLLIER	9P	DELTA	13B	ESTUDILLO	9K	FRANKLIN-AT	12K-11L	GROVE	10J	HOFFMAN	11E	PLUTO	11C
	27 th ST	9F					BROOKS	6L	COLLIER	9P	DELAWARE	7P	ESTUDILLO	9K	FRANKLIN-AT	12K-11L	GROVE	10J	HOFFMAN	11E	PLUTO	11C
	28 th ST	9F					BROOKS	6L	COLLIER	9P	DELAWARE	7P	ESTUDILLO	9K	FRANKLIN-AT	12K-11L	GROVE	10J	HOFFMAN	11E	PLUTO	11C
	29 th ST	9F					BROOKS	6L	COLLIER	9P	DELAWARE	7P	ESTUDILLO	9K	FRANKLIN-AT	12K-11L	GROVE	10J	HOFFMAN	11E	PLUTO	11C
	30 th ST	9F					BROOKS	6L	COLLIER	9P	DELAWARE	7P	ESTUDILLO	9K	FRANKLIN-AT	12K-11L	GROVE	10J	HOFFMAN	11E	PLUTO	11C
	31 st ST	9F					BROOKS	6L	COLLIER	9P	DELAWARE	7P	ESTUDILLO	9K	FRANKLIN-AT	12K-11L	GROVE	10J	HOFFMAN	11E	PLUTO	11C
	32 nd ST	9F					BROOKS	6L	COLLIER	9P	DELAWARE	7P	ESTUDILLO	9K	FRANKLIN-AT	12K-11L	GROVE	10J	HOFFMAN	11E	PLUTO	11C
	33 rd ST	9F					BROOKS	6L	COLLIER	9P	DELAWARE	7P	ESTUDILLO	9K	FRANKLIN-AT	12K-11L	GROVE	10J	HOFFMAN	11E	PLUTO	11C
	34 th ST	9F					BROOKS	6L	COLLIER	9P	DELAWARE	7P	ESTUDILLO	9K	FRANKLIN-AT	12K-11L	GROVE	10J	HOFFMAN	11E	PLUTO	11C
	35 th ST	9F					BROOKS	6L	COLLIER	9P	DELAWARE	7P	ESTUDILLO	9K	FRANKLIN-AT	12K-11L	GROVE	10J	HOFFMAN	11E	PLUTO	11C
	36 th ST	9F					BROOKS	6L	COLLIER	9P	DELAWARE	7P	ESTUDILLO	9K	FRANKLIN-AT	12K-11L	GROVE	10J	HOFFMAN	11E	PLUTO	11C
	37 th ST	9F					BROOKS	6L	COLLIER	9P	DELAWARE	7P	ESTUDILLO	9K	FRANKLIN-AT	12K-11L	GROVE	10J	HOFFMAN	11E	PLUTO	11C
	38 th ST	9F					BROOKS	6L	COLLIER	9P	DELAWARE	7P	ESTUDILLO	9K	FRANKLIN-AT	12K-11L	GROVE	10J	HOFFMAN	11E	PLUTO	11C
	39 th ST	9F					BROOKS	6L	COLLIER	9P	DELAWARE	7P	ESTUDILLO	9K	FRANKLIN-AT	12K-11L	GROVE	10J	HOFFMAN	11E	PLUTO	11C
	40 th ST	9F					BROOKS	6L	COLLIER	9P	DELAWARE	7P	ESTUDILLO	9K	FRANKLIN-AT	12K-11L	GROVE	10J	HOFFMAN	11E	PLUTO	11C
	41 st ST	9F					BROOKS	6L	COLLIER	9P	DELAWARE	7P	ESTUDILLO	9K	FRANKLIN-AT	12K-11L	GROVE	10J	HOFFMAN	11E	PLUTO	11C
	42 nd ST	9F					BROOKS	6L	COLLIER	9P	DELAWARE	7P	ESTUDILLO	9K	FRANKLIN-AT	12K-11L	GROVE	10J	HOFFMAN	11E	PLUTO	11C
	43 rd ST	9F					BROOKS	6L	COLLIER	9P	DELAWARE	7P	ESTUDILLO	9K	FRANKLIN-AT	12K-11L	GROVE	10J	HOFFMAN	11E	PLUTO	11C
	44 th ST	9F					BROOKS	6L	COLLIER	9P	DELAWARE	7P	ESTUDILLO	9K	FRANKLIN-AT	12K-11L	GROVE	10J	HOFFMAN	11E	PLUTO	11C
	45 th ST	9F					BROOKS	6L	COLLIER	9P	DELAWARE	7P	ESTUDILLO	9K	FRANKLIN-AT	12K-11L	GROVE	10J	HOFFMAN	11E	PLUTO	11C



J	J AVE	13B	JACKSON	3M	JEFFERSON	12J-10P	JEFFERSON-ST	1M	JEROME	2M	JOHNSON	7N	JULIAN	8E	JUNIPER	5J-10J	
K	K AVE	11B	K ST	7F	KALMIA	6J	KANSAS	10L	KEARNEY	10K-9E	KITE	3L	KLAUBER	11M	KNEALE	7P	
L	L AVE	11B	L ST	7F	LAFAYETTE	12K	LA JOLLA	1M	LANDIS	8M	LANLEY	10F	LARK	3L	LAUREL	6J-11J	
M	M AVE	11A	M ST	7F	MADLINE	12P	MADISON	8P-11K	MAINE	80	MAINE	15K	MAPLE	6J-10J	MARCEY-AVE	10D	
N	N AVE	13A	N ST	8E	NASH	10D	NATIONAL	10D	NEALE	3M	NEARBY	2M	NELSON	12J	NEVADA	13G	
O	O AVE	11A	OHIO	13G-10N	OKLAHOMA	70	OLIVE	5K-11O	ORANGE	12N	ORIZABA	2N	PACIFIC	11A	PANORAMA	8Q	
P	P AVE	11A	PACIFIC	11M	PANORAMA	8Q	PALM	5K	PARK	13K-12H	PARDEE	12E	PARK BLVD	8L	PASCOE	7H-12E-13U	
Q	QUINCE	5K-11K	RAILROAD	8D	RANDOLPH	3H	RAVENNA	13M	RAY	10M	RAYMOND	13Q	REEDWOOD	5K-10K	REED	13M	
R	RAILROAD	8D	RANDOLPH	3H	RAVENNA	13M	RAY	10M	RAYMOND	13Q	REEDWOOD	5K-10K	REED	13M	RHODE-ISLAND	70	
S	S ST	13D	SACRAMENTO	4L	SAMPSON	10P	SASSAFRAS	3K	SCIO	14J	SEAMAN/DATE	6O-10I	SEVENTH	8G	SHAFTER	12F	
T	TAYLOR	13D	TEXAS	8L	THOMAS	13M	THOR	12B	THORN	5L-11L	TOMPKINS	13F	TORRENCE	3M	TRAINOR	14J	
U	UNION	12A	UNIVERSITY	8M	UPAS	5L	UTAH	10L	V	V ST	13D	VALLE	11D	VAN BUREN	8-0	VAN DYKE	14L
V	V ST	13D	VALLE	11D	VAN BUREN	8-0	VAN DYKE	14L	VAN HESSER	11I	VESTA	13A	VERMONT	7L	VILLA TERRACE	8U	
W	WABASH	11N-13E-13L	WALL	13J	WALNUT	13P	WARD	13P	WASHINGTON	4N-11M	WEBSTER	11M-10E	WESCOTT	10K	WETHERBY	1M	
X	X ST	13C	Y ST	13C	YAMA	13A	Z ST	13C									

Z. F. CALLAHAN President
 B. D. PERKINS Secretary
 BURTON I. PIERCE Treasurer

CALLAHAN CONSTRUCTION CO.

809-10 AMERICAN NATIONAL BANK BUILDING
 SAN DIEGO, CALIFORNIA

Home 3568 AUTHORIZED CAPITAL, \$200,000 Sunset 2128

W. H. SMITH, President

E. B. HARVEY, Secy & Treas

Auto Service Co., Inc.

Newest and Finest Taxicabs and Touring Cars For Hire
Prices Most Reasonable Service Guaranteed Day or Night Service

SUNSET MAIN 3082

1340 D STREET

Near Corner 5th and D Streets

HOME 3305

Corner 30th and Kalmia

Branch Office at Burlingame

MAIN OFFICE
1109-11 D STREET

McFADDEN & BUXTON

Largest lots, all street improvements and cement walks installed. Children's playground. Close to business center. Restrictions.

*The Peer of all San
Diego Home Tracts*

Burlingame



AMERICAN NATIONAL BANK

AMERICAN NATIONAL BANK BUILDING
N. E. Cor. 5th and D Streets

Capital	\$ 100,000.00
Surplus and Profits	100,000.00
Total Resources	1,700,000.00

Central Location---Modern Equipment
Special Attention Given to Transient Accounts

J. W. SEFTON, JR., Pres.	C. E. WILLIAMS, Cashier
I. SAAC IRWIN, V-Pres.	L. J. RICE, Ass't Cashier
	T. C. HAMMOND, Ass't Cashier