

PRELIMINARY REPORT AND INDEX
OF
NAVIGATION, DEPTH, MAGNETIC AND SUBBOTTOM PROFILER DATA
SOUTHTOW EXPEDITION
LEG 12

R/V T. WASHINGTON
Pago Pago, Samoa (29 Dec. 1972)
To
Honolulu, Hawaii (23 Jan. 1973)

Chief Scientist, Leg 12 - F. N. Spiess
Cruise Coordinator - J. Mudie
Airgun Tech. - R. M. Byrne
Computer Tech. - J. L. Abbott
Resident Marine Tech. - R. C. Wilson
Data Processed by - U. Albright, J. Moore, O. McConnell

Geological Data Center

T. E. Chase - Curator
S. M. Smith - Data Processing Coordinator
Scripps Institution of Oceanography
La Jolla, California

March 6, 1973

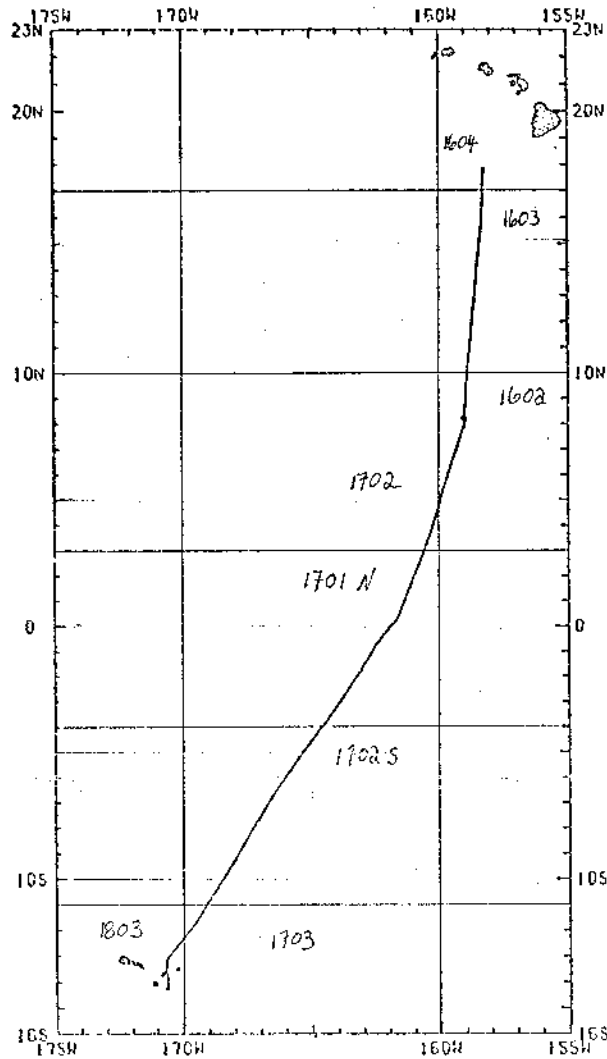
Preliminary Report and Index of Navigation, Depth, Magnetic and Subbottom Profiler Data

Contents:

- Index Chart - gives track of cruise leg and boundaries of depth compilation plots (see below).
- Track Charts - annotated with dates (day/month) and hour ticks. The scale (.3"/deg. long) is the same as the index charts of previous SIO cruises published as Report IMR TR-25.
- Profiles - Depth and magnetic anomaly vs. distance. Dates (day/month) and positions of major course changes (greater than 30 degrees) are annotated. Sections of track having subbottom profiler (airgun) records have a solid black line along the bottom of the profile.

For information on the availability and reproduction costs of data in the following forms, contact T. E. Chase, Curator, Geological Data Center, Scripps Institution of Oceanography, La Jolla, California 92037 (714-453-2000, Ext. 1534):

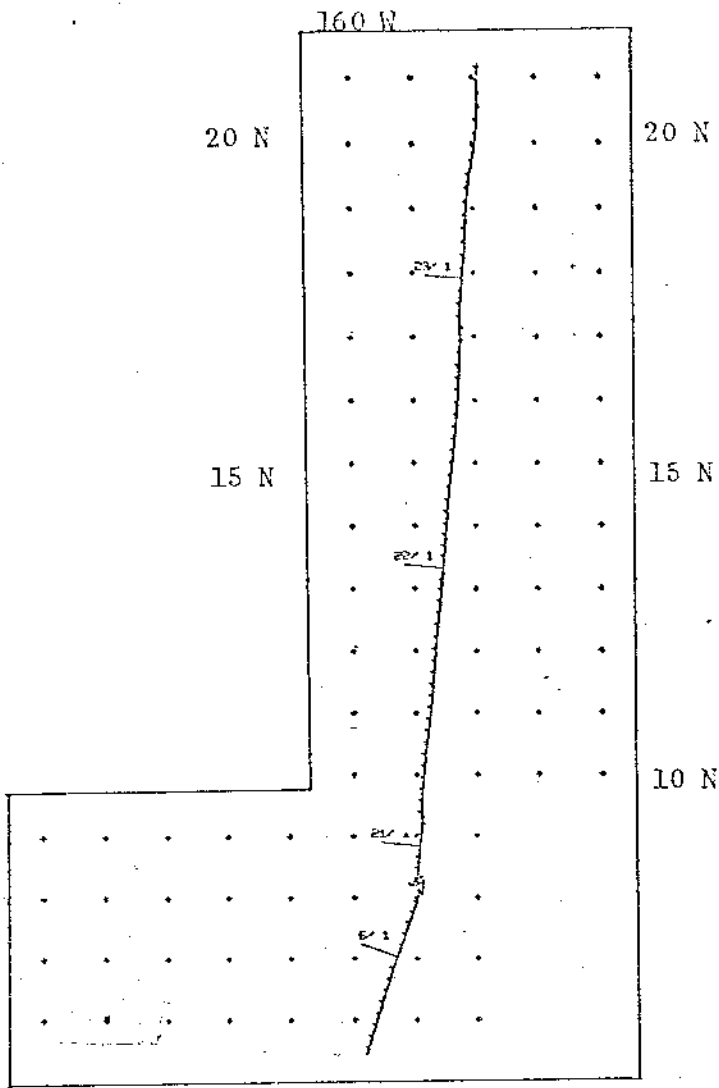
1. Navigation listing of times and positions of course and speed changes, fixes and drift velocity.
 2. Depth compilation plots - in fathoms (assumed sound velocity of 800 fm./sec.) at approximately 1 mile spacing, plotted at 4" degree with standard U.S. Navy Oceanographic Office BC series boundaries (see index chart).
 3. Plots of magnetic anomaly profiles along track-map scale = 1.2"/degree; anomaly scale between 15°N and 15°S latitude = 500 gamma/inch; anomaly scale north of 15°N and south of 15°S = 1000 gamma/inch) from values retrieved at approximately 1 mile spacing and regional field removed using the 1965 IGRF.
 4. Card Decks of navigation, depth and magnetics (for specific formats, contact S. M. Smith, Geological Data Center).
 5. S.I.O. Sample Index - list of beginning and end times and positions of all underway records as well as all other samples (geology, biology, physical oceanography, etc.) collected on the cruise leg.
 6. Microfilm or Xerox copies of:
 - a. Echosounder records - 12 and 3.5 kHz frequency
 - b. Subbottom profiler records (airgun)
 - c. Magnetometer records
 - d. Underway Data Log
-



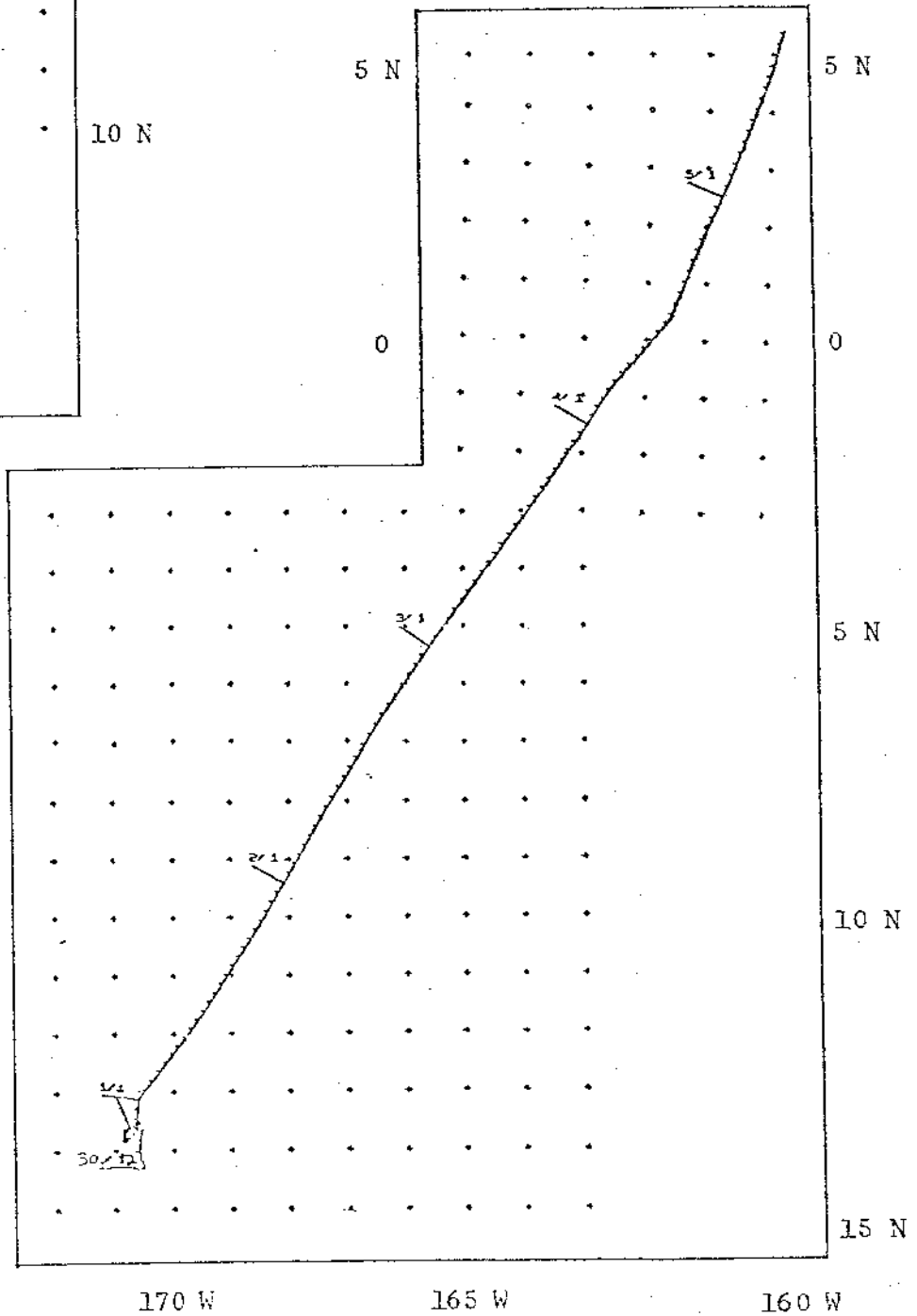
SOUTHFLOW EXPEDITION
 LEG 12
 R/V T. WASHINGTON
 Chief Scientist - F.N. Spiess
 Pago Pago, Samoa - Honolulu, Hawaii
 (29 December 1973 - 23 January 1973)

TOTAL MILEAGE

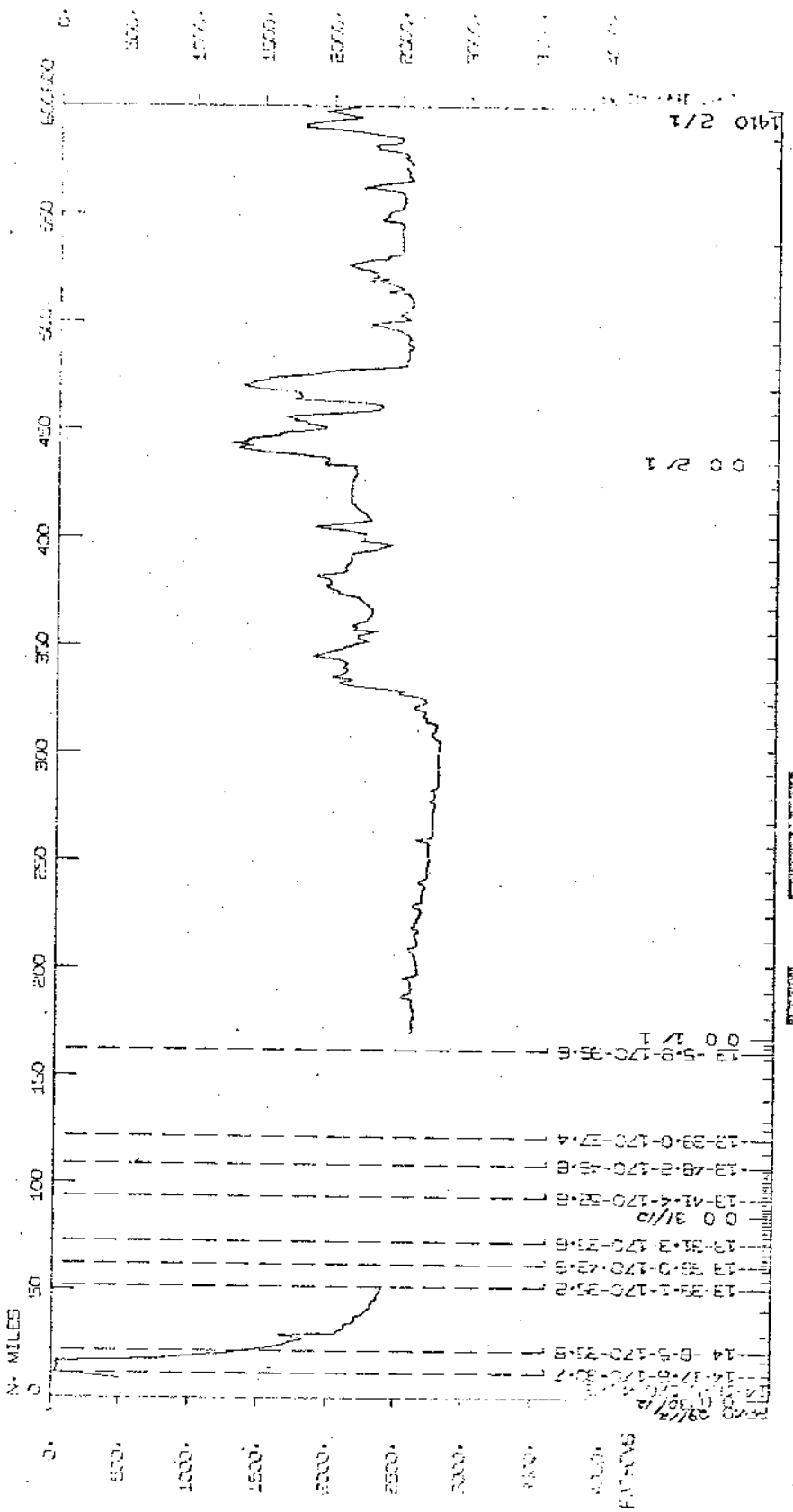
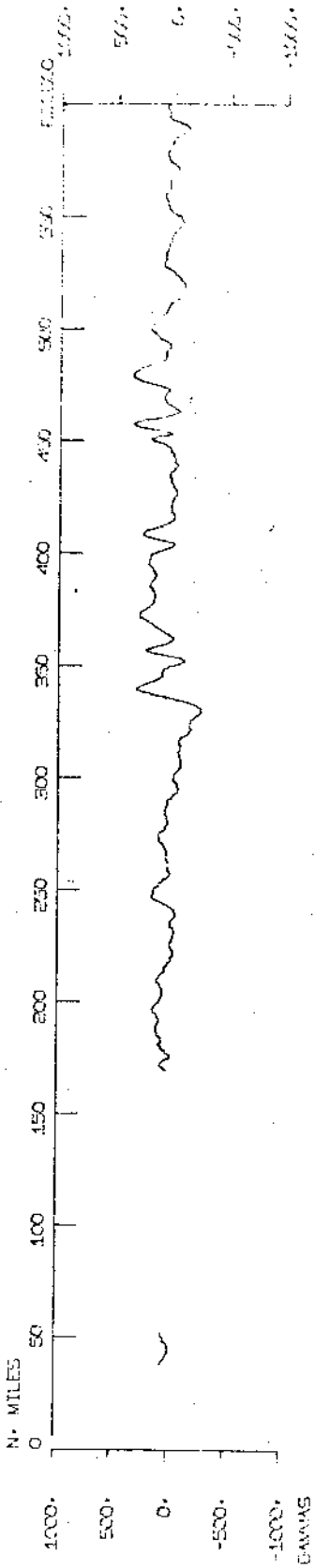
- 1) Cruise - 3200.6 miles
- 2) Bathymetry - 2180 miles
- 3) Magnetics - 2105 miles
- 4) Seismic Reflection - 735 miles



SOUTHTON LEG 12
trackplot



SOUTHWEST LEG 12



1910 2/1

00 2/1

00 2/1

00 31/12

13-35-1-170-302

13-35-0-170-302

13-35-2-170-302

13-35-3-170-302

13-35-4-170-302

13-35-5-170-302

13-35-6-170-302

13-35-7-170-302

13-35-8-170-302

13-35-9-170-302

13-35-10-170-302

13-35-11-170-302

13-35-12-170-302

13-35-13-170-302

13-35-14-170-302

13-35-15-170-302

13-35-16-170-302

13-35-17-170-302

13-35-18-170-302

13-35-19-170-302

13-35-20-170-302

13-35-21-170-302

13-35-22-170-302

13-35-23-170-302

13-35-24-170-302

13-35-25-170-302

13-35-26-170-302

13-35-27-170-302

13-35-28-170-302

13-35-29-170-302

13-35-30-170-302

13-35-31-170-302

13-35-32-170-302

13-35-33-170-302

13-35-34-170-302

13-35-35-170-302

13-35-36-170-302

13-35-37-170-302

13-35-38-170-302

13-35-39-170-302

13-35-40-170-302

13-35-41-170-302

13-35-42-170-302

13-35-43-170-302

13-35-44-170-302

13-35-45-170-302

13-35-46-170-302

13-35-47-170-302

13-35-48-170-302

13-35-49-170-302

13-35-50-170-302

13-35-51-170-302

13-35-52-170-302

13-35-53-170-302

13-35-54-170-302

13-35-55-170-302

13-35-56-170-302

13-35-57-170-302

13-35-58-170-302

13-35-59-170-302

13-35-60-170-302

13-35-61-170-302

13-35-62-170-302

13-35-63-170-302

13-35-64-170-302

13-35-65-170-302

13-35-66-170-302

13-35-67-170-302

13-35-68-170-302

13-35-69-170-302

13-35-70-170-302

13-35-71-170-302

13-35-72-170-302

13-35-73-170-302

13-35-74-170-302

13-35-75-170-302

13-35-76-170-302

13-35-77-170-302

13-35-78-170-302

13-35-79-170-302

13-35-80-170-302

13-35-81-170-302

13-35-82-170-302

13-35-83-170-302

13-35-84-170-302

13-35-85-170-302

13-35-86-170-302

13-35-87-170-302

13-35-88-170-302

13-35-89-170-302

13-35-90-170-302

13-35-91-170-302

13-35-92-170-302

13-35-93-170-302

13-35-94-170-302

13-35-95-170-302

13-35-96-170-302

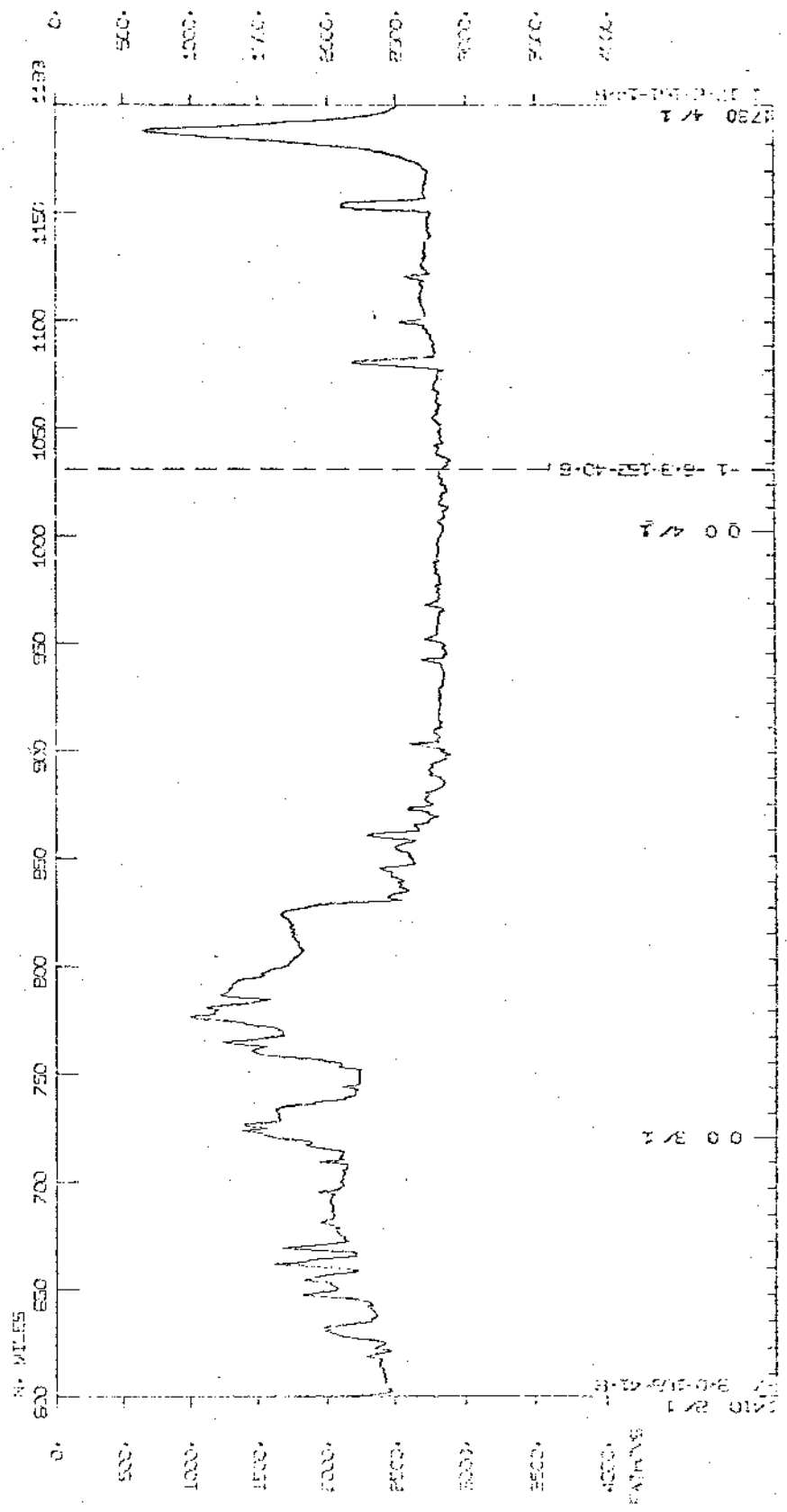
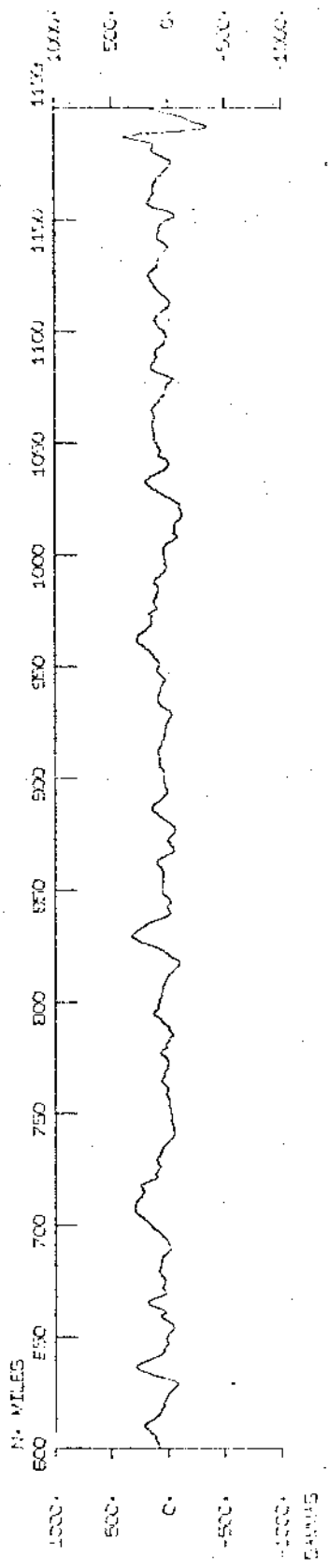
13-35-97-170-302

13-35-98-170-302

13-35-99-170-302

13-35-100-170-302

COLLECTION LOG 12

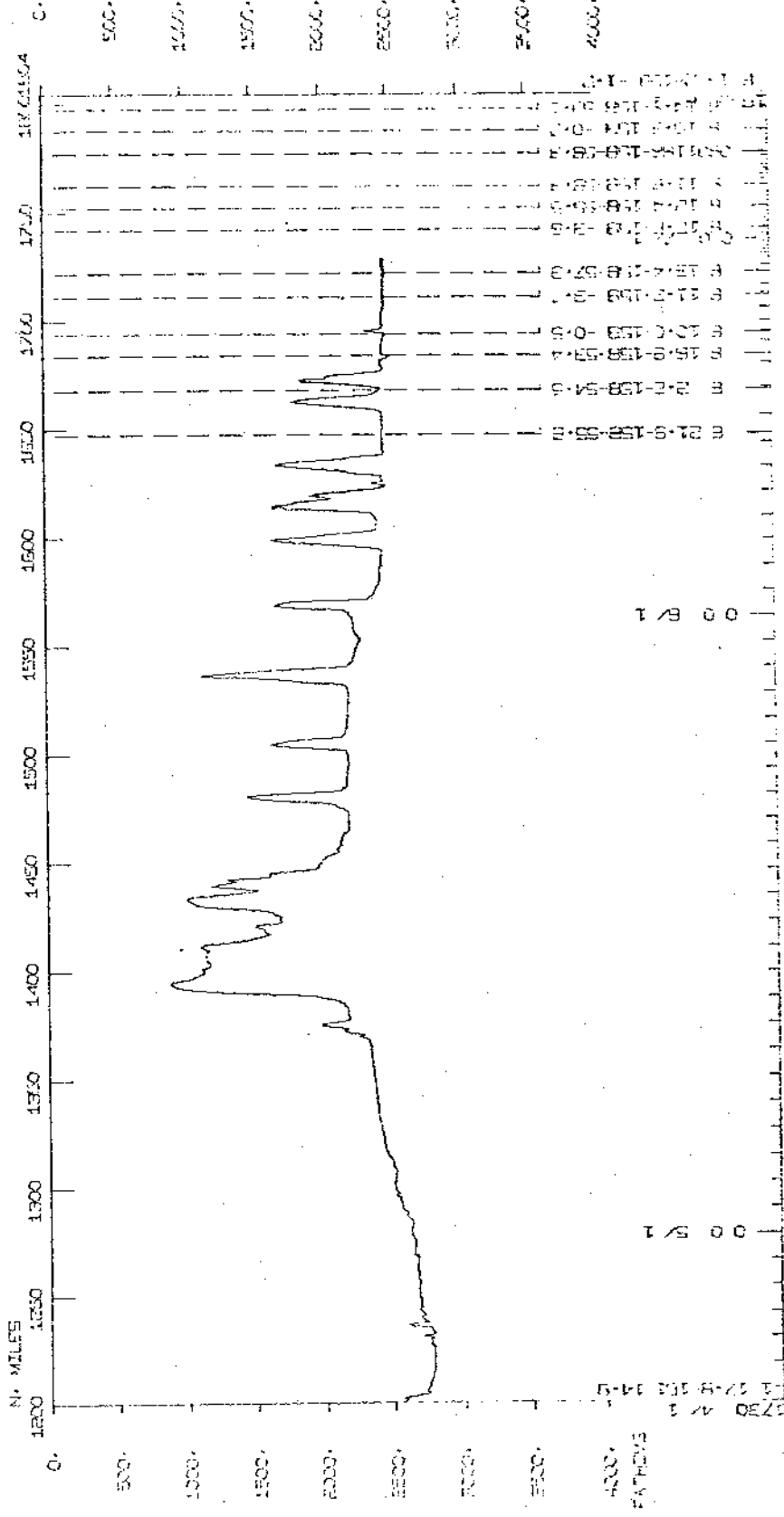
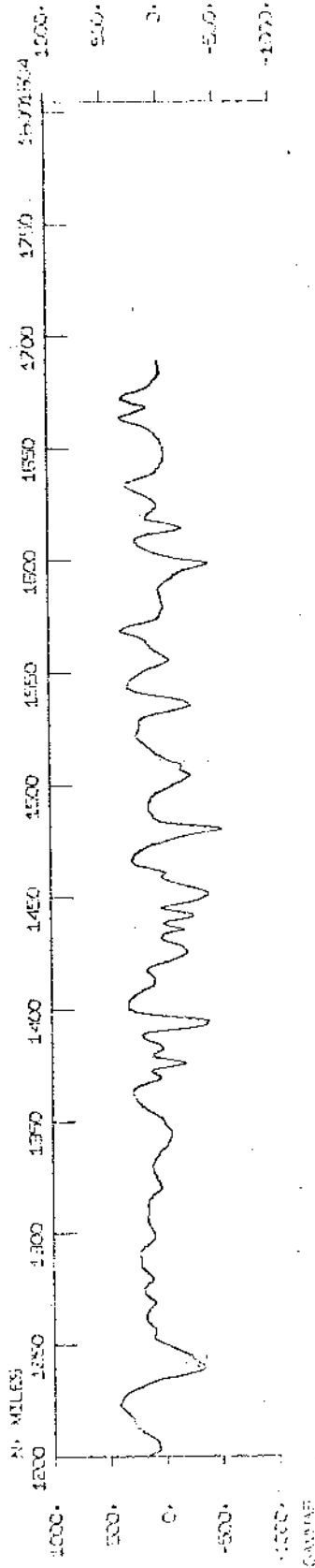


1230 4/1

00 4/1

00 3/1

1230 4/1



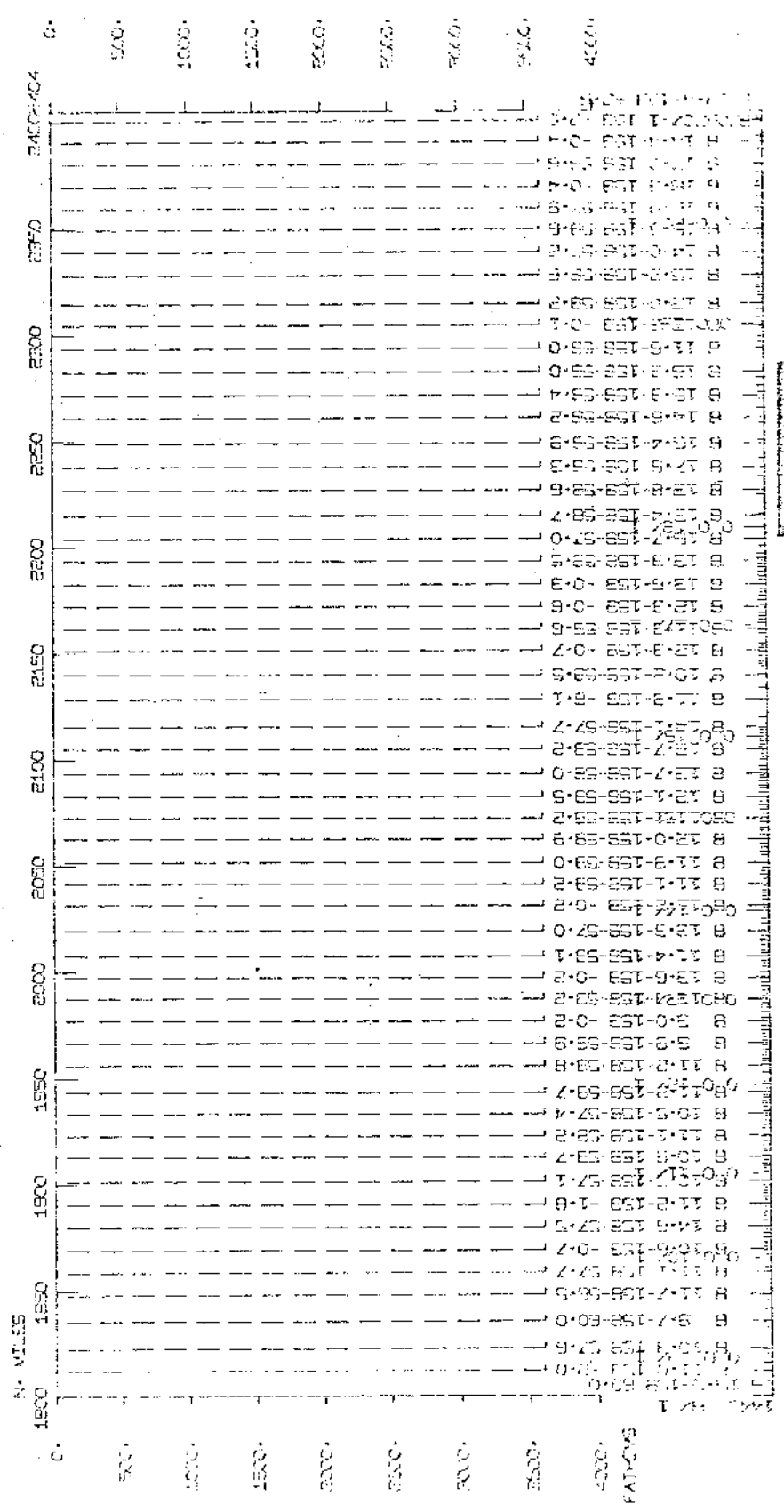
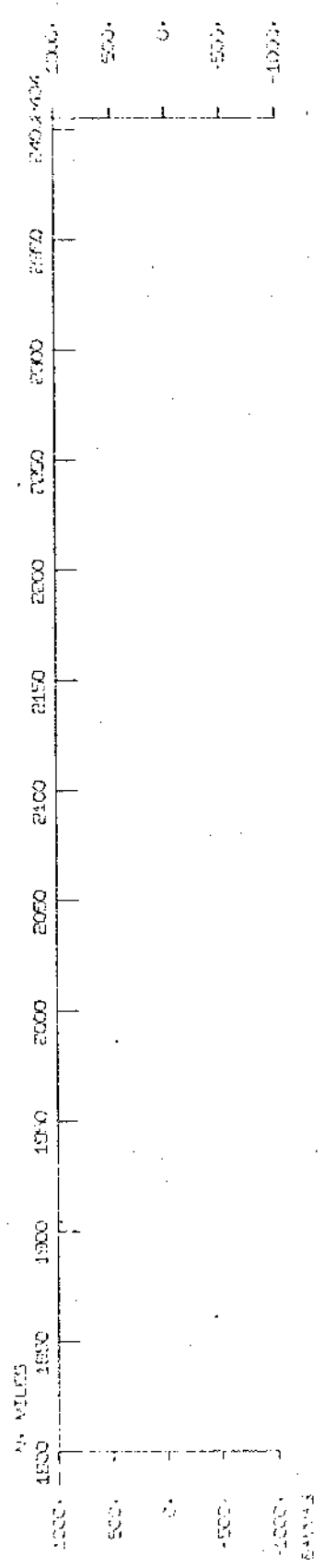
00 R 1

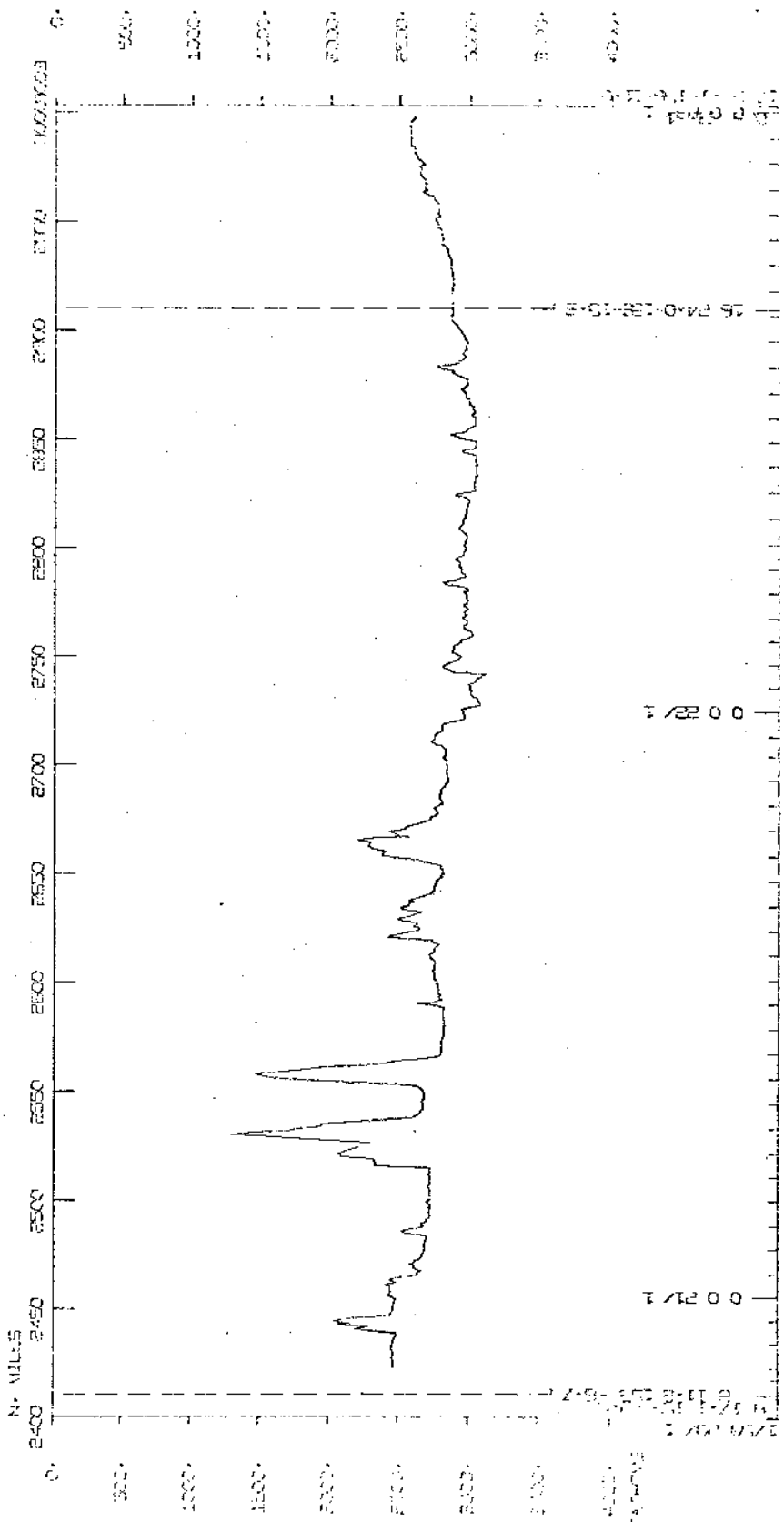
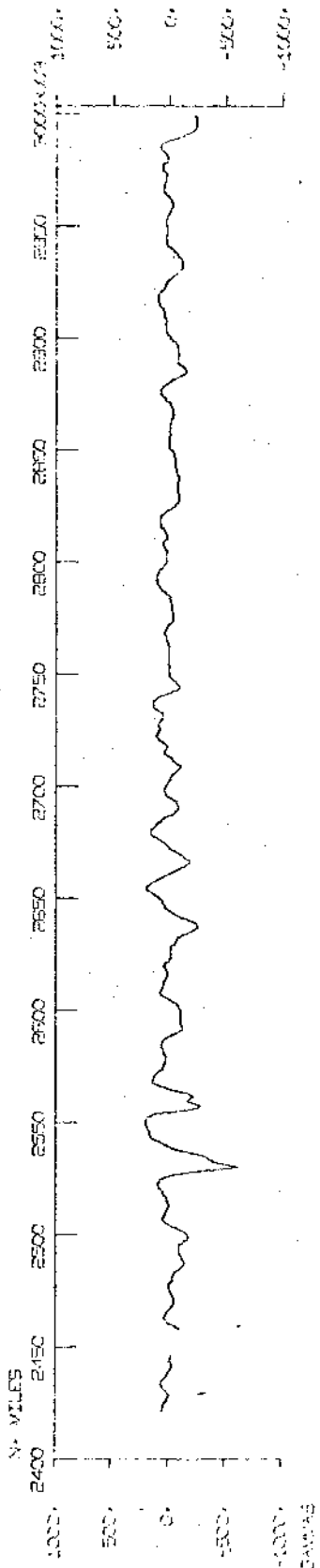
00 R 1

0230 M 1
 1 17-8 10 14-5

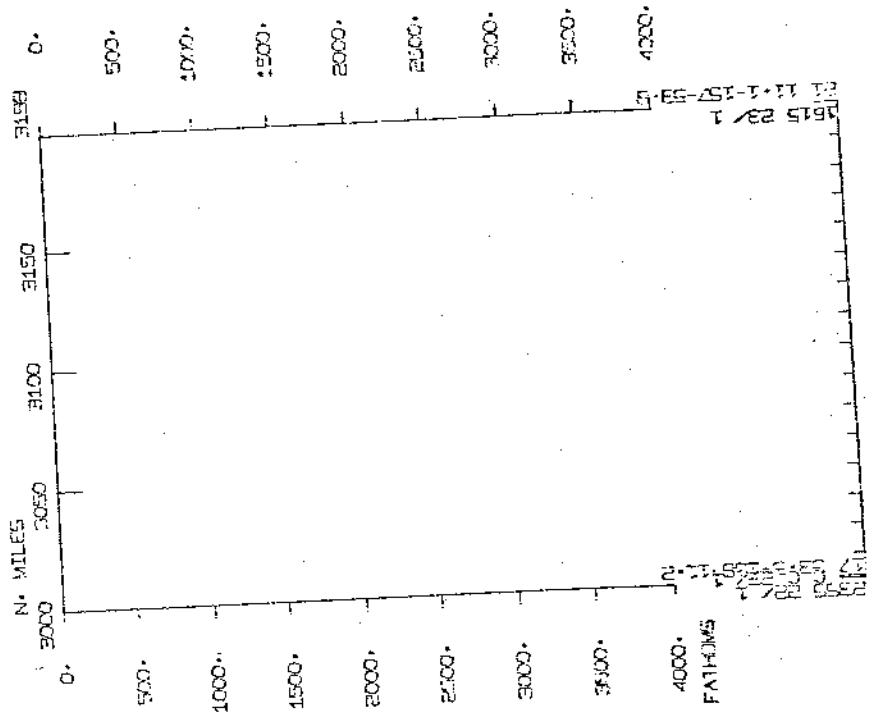
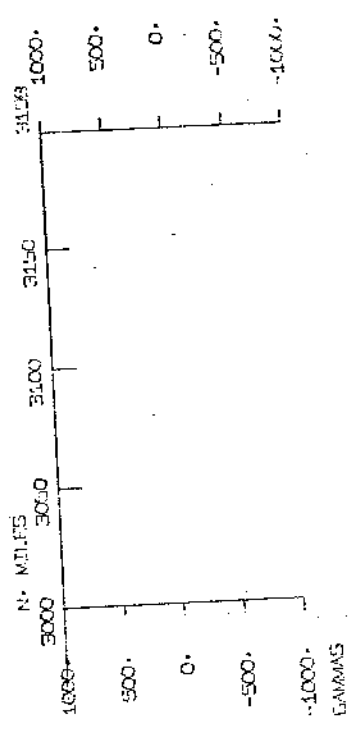
SCIENTIFIC ELECTRONICS

SOUTH INDIAN FIELD





THE UNITED STATES GOVERNMENT



SOUTH TOW LEG 12

19615 22 1

1000
2000
3000
4000

*** NOTE *** TIME ZONES AND MINUTES OF LATITUDE AND LONGITUDE ARE LISTED
IN TENTHS (E.G. 10.6 IS LISTED AS 106)

TIME GMT	DATE D.M.Y.	TIME TZ	SAMP LOC CODE	SAMP IDENT.	SURF. DISP TEMP. CODE	LAT.	LONG.	CRUISE LEG-SHIP
1000	301272		DT	B DEEP-TOW SOTW200		MPL 13 395S	170 347W	S SOTW12WT
1	1 173		DT	E DEEP-TOW SOTW200		MPL 13 67S	170 365W	S SOTW13WT
1109	6 173		DT	B DEEP-TOW SOTW201		MPL 8 127N	158 582W	S SOTW12WT
2030	20 173		DT	E DEEP-TOW SOTW201		MPL 8 149N	159 0W	S SOTW12WT

UNDERWAY DATA - CURATOR T.E. CHASE 2ND FLOOR AQUARIUM (EXT. 1534)

*** NAVIGATION PLOTS ***

TIME GMT	DATE D.M.Y.	TIME TZ	SAMP LOC CODE	SAMP IDENT.	SURF. DISP TEMP. CODE	LAT.	LONG.	CRUISE LEG-SHIP
615	301272		NVCP B	DR PLOT 12-01		GDC 14 181S	170 313W	S SOTW12WT
1015	1 173		NVCP E	DR PLOT 12-01		GDC 11 349S	169 264W	S SOTW12WT
1200	1 173		NVCP B	DR PLOT 12-02		GDC 11 187S	169 162W	S SOTW12WT
0	3 173		NVCP E	DR PLOT 12-02		GDC 5 218S	165 350W	S SOTW12WT
100	3 173		NVCP B	DR PLOT 12-03		GDC 5 124S	165 283W	S SOTW12WT
1300	4 173		NVCP E	DR PLOT 12-03		GDC 0 266N	161 342W	S SOTW12WT
1315	4 173		NVCP B	DR PLOT 12-04		GDC 0 295N	161 331W	S SOTW12WT
535	6 173		NVCP E	DR PLOT 12-04		GDC 8 23N	158 573W	S SOTW12WT
1020	301272		NVBP B	BRIDGE PLOT 12-1		GDC 13 391S	170 362W	S SOTW12WT
1530	1 173		NVBP E	BRIDGE PLOT 12-1		GDC 10 462S	168 557W	S SOTW12WT
1530	1 173		NVBP B	BRIDGE PLOT 12-2		GDC 10 462S	168 557W	S SOTW12WT
1034	3 173		NVBP E	BRIDGE PLOT 12-2		GDC 3 400S	164 209W	S SOTW12WT
1034	3 173		NVBP B	BRIDGE PLOT 12-3		GDC 3 400S	164 209W	S SOTW12WT
348	5 173		NVBP E	BRIDGE PLOT 12-3		GDC 3 138N	160 296W	S SOTW12WT
348	5 173		NVBP B	BRIDGE PLOT 12-4		GDC 3 138N	160 296W	S SOTW12WT
1000	21 173		NVBP E	BRIDGE PLOT 12-4		GDC 10 430N	158 481W	S SUTW12WT
1000	21 173		NVBP B	BRIDGE PLOT 12-5		GDC 10 430N	158 481W	S SUTW12WT
1800	23 173		NVBP E	BRIDGE PLOT 12-5		GDC 21 112N	157 538W	S SUTW12WT

*** MAGNETOMETER ***

TIME GMT D.M.Y.	DATE TZ LOC	SAMP LOC CODE	SURF. TEMP.	DISP CODE	SAMPLE IDENT.	LAT.	LONG.	CRUISE LEG-SHIP
645	301272	MGR	6	MACNET-ROLL12-01	GDC 14	146S	170 321W	S SOTW12WT
1	23 173	MGR	E	MAGNET-ROLL12-01	GDC 17	547N	158 111W	S SOTW12WT

*** CURRENT MEASUREMENT ***

TIME GMT D.M.Y.	DATE TZ LOC	SAMP LOC CODE	SURF. TEMP.	DISP CODE	SAMPLE IDENT.	LAT.	LONG.	CRUISE LEG-SHIP
754	201172	CMAB	B	SOTW-10 DROP	DTG 14	165S	170 409W	S SOTW10WT
1753	311272	CMAB	E	SOTW-12 RCVR	DTG 13	374S	170 396W	S SOTW12WT
104	201172	CMAB	B	SOTW-10 DROP	DTG 14	165S	170 409W	S SOTW10WT
2346	311272	CMAB	E	SOTW-12 RCVR	DTG 13	71S	170 364W	S SOTW12WT

GEOLOGICAL SAMPLES - CURATOR W.R.RIEDEL (EXT.1579)

*** CORES ***

TIME GMT D.M.Y.	DATE TZ LOC	SAMP LOC CODE	SURF. TEMP.	DISP CODE	SAMPLE IDENT.	LAT.	LONG.	CRUISE LEG-SHIP
43	12 173	C	G	SOTW12G	12-202	GCR 8	109N 158 593W	S SOTW12WT
312	12 173	C	G	SOTW12G	12-203	GCR 8	148N 159 8W	S SOTW12WT
1624	13 173	C	G	SOTW12G	12-204	GCR 8	138N 158 564W	S SOTW12WT

DATA COLLECTION AND PROCESSING GROUP-F.WILKES (EXT.1140)

*** SALINITY SAMPLES ***

TIME GMT D.M.Y.	DATE TZ LOC	SAMP LOC CODE	SURF. TEMP.	DISP CODE	SAMPLE IDENT.	LAT.	LONG.	CRUISE LEG-SHIP
607	301272	SSSA		2MM--SAL-12-01	28.6	DCP 14	188S 170 326W	S SOTW12WT
1201	301272	SSSA		62HH-SAL-12-02	28.5	DCP 13	307S 170 428W	S SOTW12WT
1755	301272	SSSA		42PP-SAL-12-03	28.4	DCP 13	313S 170 352W	S SOTW12WT
2350	301272	SSSA		P13--SAL-12-04	28.6	DCP 13	378S 170 452W	S SOTW12WT
600	311272	SSSA		27HH-SAL-12-05	28.3	DCP 13	437S 170 519W	S SOTW12WT
1215	311272	SSSA		98XX-SAL-12-06	28.2	DCP 13	496S 170 482W	S SOTW12WT
1410	311272	SSSA		20PP-SAL-12-07	28.4	DCP 13	352S 170 394W	S SOTW12WT
12	1 173	SSSA		93---SAL-12-08	28.4	DCP 13	57S 170 359W	S SOTW12WT
322	1 173	SSSA		92A---SAL-12-09	28.7	DCP 12	358S 170 126W	S SOTW12WT
603	1 173	SSSA		0076-SAL-12-10	28.7	DCP 12	136S 169 553W	S SOTW12WT
906	1 173	SSSA		T196-SAL-12-11	28.6	DCP 11	456S 169 341W	S SOTW12WT
1220	1 173	SSSA		X----SAL-12-12	28.2	DCP 11	156S 169 142W	S SOTW12WT
1501	1 173	SSSA		6037-SAL-12-13	27.9	DCP 10	507S 168 585W	S SOTW12WT
1919	1 173	SSSA		52YV-SAL-12-14	28.4	DCP 10	105S 168 322W	S SOTW12WT

TIME GMT	DATE D-M-Y	TIME TZ	SAMP LDC	SAMP CODE	SAMPLE IDENT.	SURF. TEMP.	DISP CODE	LAT.	LONG.	CRUISE LEG-SHIP
2115	1	173	SSSA	SSSA	1741-SAL-12-15	29.7	DCP	9 525S	168 211W	S SOTW12WT
5	2	173	SSSA	SSSA	T152-SAL-12-16	29.5	DCP	9 242S	168 46W	S SOTW12WT
312	2	173	SSSA	SSSA	T158-SAL-12-17	29.9	DCP	8 538S	167 474W	S SOTW12WT
606	2	173	SSSA	SSSA	T164-SAL-12-18	27.4	DCP	8 257S	167 314W	S SOTW12WT
905	2	173	SSSA	SSSA	T164-SAL-12-19	29.9	DCP	7 556S	167 140W	S SOTW12WT
1207	2	173	SSSA	SSSA	44YY-SAL-12-20	30.0	DCP	7 245S	166 544W	S SOTW12WT
1500	2	173	SSSA	SSSA	43YY-SAL-12-21	28.8	DCP	6 541S	166 366W	S SOTW12WT
1800	2	173	SSSA	SSSA	43JJ-SAL-12-22	29.7	DCP	6 228S	166 168W	S SOTW12WT
2100	2	173	SSSA	SSSA	009 -SAL-12-23	00.0	DCP	5 514S	165 556W	S SOTW12WT
0	3	173	SSSA	SSSA	GC29-SAL-12-24	29.2	DCP	5 218S	165 350W	S SOTW12WT
404	3	173	SSSA	SSSA	T155-SAL-12-25	28.0	DCP	5 26S	165 211W	S SOTW12WT
610	3	173	SSSA	SSSA	Q010-SAL-12-26	29.5	DCP	4 430S	165 69W	S SOTW12WT
759	3	173	SSSA	SSSA	18RR-SAL-12-27	29.8	DCP	4 228S	164 520W	S SOTW12WT
959	3	173	SSSA	SSSA	MM1 -SAL-12-28	30.0	DCP	4 50S	164 391W	S SOTW12WT
1201	3	173	SSSA	SSSA	LL62-SAL-12-29	29.6	DCP	3 458S	164 247W	S SOTW12WT
1400	3	173	SSSA	SSSA	JJ46-SAL-12-30	29.8	DCP	3 254S	164 114W	S SOTW12WT
1600	3	173	SSSA	SSSA	11VV-SAL-12-31	29.2	DCP	3 61S	163 577W	S SOTW12WT
1800	3	173	SSSA	SSSA	W76 -SAL-12-32	29.9	DCP	2 467S	163 446W	S SOTW12WT
2000	3	173	SSSA	SSSA	JJ16-SAL-12-33	29.8	DCP	2 273S	163 318W	S SOTW12WT
2356	3	173	SSSA	SSSA	GG4 -SAL-12-34	29.5	DCP	2 80S	163 191W	S SOTW12WT
201	4	173	SSSA	SSSA	NN97-SAL-12-35	29.2	DCP	1 314S	162 550W	S SOTW12WT
401	4	173	SSSA	SSSA	CC9 -SAL-12-36	29.2	DCP	1 118S	162 437W	S SOTW12WT
600	4	173	SSSA	SSSA	00R3-SAL-12-37	28.6	DCP	0 543S	162 332W	S SOTW12WT
839	4	173	SSSA	SSSA	40HH-SAL-12-38	28.7	DCP	0 364S	162 216W	S SOTW12WT
1046	4	173	SSSA	SSSA	Q07 -SAL-12-39	29.2	DCP	0 126S	162 38W	S SOTW12WT
1466	4	173	SSSA	SSSA	40UU-SAL-12-40	29.0	DCP	0 59N	161 489W	S SOTW12WT
1600	4	173	SSSA	SSSA	CC26-SAL-12-41	29.1	DCP	0 168W	161 402W	S SOTW12WT
2000	4	173	SSSA	SSSA	LL98-SAL-12-42	28.7	DCP	0 382N	161 301W	S SOTW12WT
2200	4	173	SSSA	SSSA	FF60-SAL-12-43	28.6	DCP	1 9N	161 211W	S SOTW12WT
0	5	173	SSSA	SSSA	KX8R-SAL-12-44	28.7	DCP	1 234N	161 127W	S SOTW12WT
200	5	173	SSSA	SSSA	76SS-SAL-12-45	29.0	DCP	1 457N	161 41W	S SOTW12WT
400	5	173	SSSA	SSSA	620D-SAL-12-46	29.1	DCP	2 80N	160 552W	S SOTW12WT
606	5	173	SSSA	SSSA	R64 -SAL-12-47	29.0	DCP	2 305N	160 458W	S SOTW12WT
800	5	173	SSSA	SSSA	11MM-SAL-12-48	29.5	DCP	2 531N	160 376W	S SOTW12WT
1003	5	173	SSSA	SSSA	82K -SAL-12-49	29.1	DCP	3 161N	160 287W	S SOTW12WT
1200	5	173	SSSA	SSSA	21HH-SAL-12-50	28.8	DCP	3 406N	160 200W	S SOTW12WT
1500	5	173	SSSA	SSSA	57KK-SAL-12-51	28.7	DCP	4 25N	160 131W	S SOTW12WT
1823	5	173	SSSA	SSSA	3LL -SAL-12-52	28.8	DCP	4 261N	160 59W	S SOTW12WT
2110	5	173	SSSA	SSSA	V66 -SAL-12-53	28.6	DCP	4 479N	159 588W	S SOTW12WT
0	6	173	SSSA	SSSA	89CC-SAL-12-57	27.0	DCP	7 17N	159 179W	S SOTW12WT
300	6	173	SSSA	SSSA	W15 -SAL-12-58	28.0	DCP	7 349N	159 66W	S SOTW12WT
600	6	173	SSSA	SSSA	84K -SAL-12-59	27.6	DCP	8 70N	158 571W	S SOTW12WT
920	6	173	SSSA	SSSA	45HH-SAL-12-60	26.3	DCP	8 62N	158 536W	S SOTW12WT
1200	6	173	SSSA	SSSA	G69 -SAL-12-61	27.9	DCP	8 99N	159 0W	S SOTW12WT
1800	6	173	SSSA	SSSA	H10 -SAL-12-62	27.1	DCP	8 121N	158 557W	S SOTW12WT
0	7	173	SSSA	SSSA	X6 -SAL-12-63	27.6	DCP	8 126N	158 585W	S SOTW12WT
1204	7	173	SSSA	SSSA	LL20-SAL-12-64	26.0	DCP	8 153N	158 590W	S SOTW12WT
2050	7	173	SSSA	SSSA	9400-SAL-12-65	26.4	DCP	8 164N	158 596W	S SOTW12WT
605	8	173	SSSA	SSSA	JJ44-SAL-12-66	27.1	DCP	8 172N	158 504W	S SOTW12WT
1824	8	173	SSSA	SSSA	4800-SAL-12-67	26.8	DCP	8 116N	158 589W	S SOTW12WT

TIME GMT	DATE M.P.Y.	TIME LOC	TZ LOC	SAMP CODE	SAMPLE IDENT.	SURF. TEMP.	DISP CODE	LAT.	LONG.	CRUISE LEG-SHIP
2355	8	173		SSSA	PP92-SAL-12-68	27.8	DCP	8 141N	158 593W	S SOTW12WT
1159	9	173		SSSA	N90-SAL-12-69	26.9	DCP	8 107N	159 10W	S SOTW12WT
600	10	173		SSSA	K65-SAL-12-70	26.9	DCP	8 122N	158 569W	S SOTW12WT
1800	10	173		SSSA	36HH-SAL-12-71	27.7	DCP	8 145N	158 588W	S SOTW12WT
1800	11	173		SSSA	15CC-SAL-12-72	27.6	DCP	8 87N	158 589W	S SOTW12WT
600	12	173		SSSA	023-SAL-12-73	27.2	DCP	8 113N	158 594W	S SOTW12WT
4	13	173		SSSA	GG61-SAL-12-74	27.7	DCP	8 131N	158 591W	S SOTW12WT
1149	13	173		SSSA	95HH-SAL-12-75	27.6	DCP	8 115N	158 583W	S SOTW12WT
601	14	173		SSSA	44HH-SAL-12-76	27.6	DCP	8 116N	158 588W	S SOTW12WT
1800	14	173		SSSA	E92-SAL-12-77	27.5	DCP	8 112N	158 599W	S SOTW12WT
1153	15	173		SSSA	T22-SAL-12-78	27.4	DCP	8 127N	158 581W	S SOTW12WT
602	16	173		SSSA	11G-SAL-12-79	26.0	DCP	8 121W	159 77W	S SOTW12WT
1800	16	173		SSSA	62TT-SAL-12-80	27.5	DCP	8 131N	158 597W	S SOTW12WT
556	17	173		SSSA	64TT-SAL-12-81	27.2	DCP	8 133N	159 0W	S SOTW12WT
1800	17	173		SSSA	65PP-SAL-12-82	27.3	DCP	8 126N	158 599W	S SOTW12WT
0	18	173		SSSA	CC76-SAL-12-83	27.6	DCP	8 124N	158 560W	S SOTW12WT
1153	18	173		SSSA	EE34-SAL-12-84	27.3	DCP	8 163N	158 560W	S SOTW12WT
600	19	173		SSSA	AA86-SAL-12-85	27.4	DCP	8 148N	158 571W	S SOTW12WT
1	20	173		SSSA	PP55-SAL-12-86	27.0	DCP	8 156N	158 574W	S SOTW12WT
600	20	173		SSSA	K422-SAL-12-87	27.2	DCP	8 165N	158 573W	S SOTW12WT
1800	20	173		SSSA	26Z-SAL-12-88	27.2	DCP	8 170N	159 28W	S SOTW12WT
2100	20	173		SSSA	29Z-SAL-12-89	26.5	DCP	8 185N	159 1W	S SOTW12WT
0	21	173		SSSA	PP16-SAL-12-90	26.0	DCP	8 505N	158 567W	S SOTW12WT
305	21	173		SSSA	86J-SAL-12-91	27.0	DCP	9 248N	158 555W	S SOTW12WT
614	21	173		SSSA	15XX-SAL-12-92	27.0	DCP	9 599N	158 530W	S SOTW12WT
900	21	173		SSSA	9MM-SAL-12-93	26.3	DCP	10 316N	158 496W	S SOTW12WT
1225	21	173		SSSA	0035-SAL-12-94	25.8	DCP	11 102N	158 453W	S SOTW12WT
1800	21	173		SSSA	471-SAL-12-95	27.0	DCP	11 407N	158 426W	S SOTW12WT
1800	21	173		SSSA	0076-SAL-12-96	25.8	DCP	12 135N	158 396W	S SOTW12WT
2105	21	173		SSSA	89K-SAL-12-97	25.6	DCP	12 490N	158 353W	S SOTW12WT
6	22	173		SSSA	32M-SAL-12-98	26.8	DCP	13 194N	158 325W	S SOTW12WT
600	22	173		SSSA	8MM-SAL-12-99	25.2	DCP	14 250N	158 269W	S SOTW12WT
1700	22	173		SSSA	R62-SAL-12-100	24.4	DCP	15 342N	158 167W	S SOTW12WT
1805	22	173		SSSA	C54-SAL-12-101	23.1	DCP	16 455N	158 142W	S SOTW12WT
2351	22	173		SSSA	46-SAL-12-102	26.0	DCP	17 527N	158 113W	S SOTW12WT
559	23	173		SSSA	KK17-SAL-12-103	26.0	DCP	19 57N	158 63W	S SOTW12WT
1200	23	173		SSSA	R63-SAL-12-104	24.2	DCP	20 210N	157 554W	S SOTW12WT

*** BATHYTHERMOGRAPHI ***

TIME GNT	DATE O.M.Y.	TIME TZ	SAMP LOC	SAMP LOC	IDENT.	TEMP.	DISP CODE	LAT.	LONG.	CRUISE LEG-SHIP
607	301272			BTX	XBT 12-01	28.6	BTS 14	188S	170 326W	S SOTW12WT
1201	301272			BTX	XBT 12-02	28.5	BTS 13	367S	170 428W	S SOTW12WT
1755	301272			BTX	XBT 12-03	28.4	BTS 13	313S	170 352W	S SOTW12WT
2350	301272			BTX	XBT 12-04	28.6	BTS 13	378S	170 452W	S SOTW12WT
600	311272			BTX	XBT 12-05	28.3	BTS 13	437S	170 518W	S SOTW12WT
1217	311272			BTX	XBT 12-06	28.2	BTS 13	495S	170 462W	S SOTW12WT
1810	311272			BTX	XBT 12-07	28.4	BTS 13	352S	170 394W	S SOTW12WT
12	1 173			BTX	XBT 12-08	28.4	BTS 13	57S	170 359W	S SOTW12WT
322	1 173			BTX	XBT 12-09	28.7	BTS 12	358S	170 126W	S SOTW12WT
603	1 173			BTX	XBT 12-10	28.7	BTS 12	136S	169 553W	S SOTW12WT
906	1 173			BTX	XBT 12-11	28.6	BTS 11	456S	169 341W	S SOTW12WT
1220	1 173			BTX	XBT 12-12	28.2	BTS 11	156S	169 142W	S SOTW12WT
1500	1 173			BTX	XBT 12-13	27.9	BTS 10	509S	168 586W	S SOTW12WT
1919	1 173			BTX	XBT 12-14	28.4	BTS 10	105S	168 322W	S SOTW12WT
2115	1 173			BTX	XBT 12-15	29.7	BTS 9	525S	168 211W	S SOTW12WT
5	2 173			BTX	XBT 12-16	29.5	BTS 9	242S	168 46W	S SOTW12WT
312	2 173			BTX	XBT 12-17	29.9	BTS 8	538S	167 474W	S SOTW12WT
606	2 173			BTX	XBT 12-18	27.4	BTS 8	297S	167 314W	S SOTW12WT
905	2 173			BTX	XBT 12-19	29.9	BTS 7	596S	167 140W	S SOTW12WT
1207	2 173			BTX	XBT 12-20	30.0	BTS 7	245S	166 544W	S SOTW12WT
1500	2 173			BTX	XBT 12-21	28.8	BTS 6	541S	166 566W	S SOTW12WT
1800	2 173			BTX	XBT 12-22	29.7	BTS 6	228S	166 168W	S SOTW12WT
2100	2 173			BTX	XBT 12-23	00.0	BTS 5	514S	165 556W	S SOTW12WT
0	3 173			BTX	XBT 12-24	29.2	BTS 5	214S	165 350W	S SOTW12WT
205	3 173			BTX	XBT 12-25	28.0	BTS 5	21S	165 207W	S SOTW12WT
404	3 173			BTX	XBT 12-26	29.5	BTS 4	430S	165 69W	S SOTW12WT
610	3 173			BTX	XBT 12-27	29.8	BTS 4	224S	164 520W	S SOTW12WT
759	3 173			BTX	XBT 12-28	30.0	BTS 4	50S	164 391W	S SOTW12WT
1201	3 173			BTX	XBT 12-30	29.8	BTS 3	254S	164 114W	S SOTW12WT
1400	3 173			BTX	XBT 12-31	29.2	BTS 3	61S	163 577W	S SOTW12WT
1600	3 173			BTX	XBT 12-32	29.9	BTS 2	467S	163 446W	S SOTW12WT
1800	3 173			BTX	XBT 12-33	29.9	BTS 2	273S	163 318W	S SOTW12WT
2000	3 173			BTX	XBT 12-33	29.9	BTS 2	273S	163 318W	S SOTW12WT
2356	4 173			BTX	XBT 12-34	29.5	BTS 2	60S	163 191W	S SOTW12WT
201	4 173			BTX	XBT 12-36	29.2	BTS 1	118S	162 437W	S SOTW12WT
401	4 173			BTX	XBT 12-37	28.6	BTS 0	543S	162 332W	S SOTW12WT
600	4 173			BTX	XBT 12-38	28.7	BTS 0	364S	162 216W	S SOTW12WT
802	4 173			BTX	XBT 12-39	28.7	BTS 0	364S	162 216W	S SOTW12WT
1046	4 173			BTX	XBT 12-40	29.0	BTS 0	181S	162 79W	S SOTW12WT
1201	4 173			BTX	XBT 12-41	29.1	BTS 0	163N	161 489W	S SOTW12WT
1400	4 173			BTX	XBT 12-42	28.7	BTS 0	382N	161 402W	S SOTW12WT
1600	4 173			BTX	XBT 12-43	28.6	BTS 1	9N	161 211W	S SOTW12WT
1800	4 173			BTX	XBT 12-44	28.7	BTS 1	234N	161 127W	S SOTW12WT
2000	4 173			BTX	XBT 12-45	29.0	BTS 1	457N	161 41W	S SOTW12WT
2200	4 173			BTX	XBT 12-46	29.1	BTS 2	80N	160 552W	S SOTW12WT
0	5 173			BTX	XBT 12-47	29.0	BTS 2	305N	160 458W	S SOTW12WT

TIME GMT	DATE D.M.Y.	TIME LUC	IZ LOC	SAMP CODE	SAMPLE IDENT.	SURF. TEMP.	DISP CODE	LAT.	LONG.	CRUISE LEG-SHIP
200	5	173		BTX	XBT 12-48	29.5	BTS	2 531N	160 370W	S SOTW12WT
400	5	173		BTX	XBT 12-49	29.1	BTS	3 161N	160 287W	S SOTW12WT
606	5	173		BTX	XBT 12-50	28.8	BTS	3 406N	160 200W	S SOTW12WT
800	5	173		BTX	XBT 12-51	28.7	BTS	4 25N	160 131W	S SOTW12WT
1003	5	173		BTX	XBT 12-52	28.8	BTS	4 261N	160 55W	S SOTW12WT
1200	5	173		BTX	XBT 12-53	28.6	BTS	4 479N	159 588W	S SOTW12WT
1500	5	173		BTX	XBT 12-54	29.4	BTS	5 222N	159 496W	S SOTW12WT
1824	5	173		BTX	XBT 12-55	27.0	BTS	5 593N	159 380W	S SOTW12WT
2110	5	173		BTX	XBT 12-56	27.5	BTS	6 306N	159 293W	S SOTW12WT
0	6	173		BTX	XBT 12-57	27.0	BTS	7 17N	159 179W	S SOTW12WT
300	6	173		BTX	XBT 12-58	28.0	BTS	7 349N	159 66W	S SOTW12WT
600	6	173		BTX	XBT 12-59	27.6	BTS	8 70N	158 571W	S SOTW12WT
920	6	173		BTX	XBT 12-60	26.3	BTS	8 62N	158 536W	S SOTW12WT
1209	6	173		BTX	XBT 12-61	27.9	BTS	8 99N	158 591W	S SOTW12WT
1802	6	173		BTX	XBT 12-62	27.1	BTS	8 121N	158 595W	S SOTW12WT
0	7	173		BTX	XBT 12-63	27.6	BTS	8 126N	158 585W	S SOTW12WT
1205	7	173		BTX	XBT 12-64	26.0	BTS	8 153N	158 590W	S SOTW12WT
2050	7	173		BTX	XBT 12-65	26.4	BTS	8 164N	158 596W	S SOTW12WT
605	8	173		BTX	XBT 12-66	27.1	BTS	8 172N	158 584W	S SOTW12WT
1224	8	173		BTX	XBT 12-67	26.8	BTS	8 116N	158 589W	S SOTW12WT
2355	8	173		BTX	XBT 12-68	27.8	BTS	8 141N	158 593W	S SOTW12WT
1159	9	173		BTX	XBT 12-69	26.9	BTS	8 107N	159 10W	S SOTW12WT
601	10	173		BTX	XBT 12-70	26.9	BTS	8 123N	158 570W	S SOTW12WT
1800	10	173		BTX	XBT 12-71	27.7	BTS	8 145N	158 588W	S SOTW12WT
1804	11	173		BTX	XBT 12-72	27.6	BTS	8 87N	158 590W	S SOTW12WT
600	12	173		BTX	XBT 12-73	27.2	BTS	8 113N	158 594W	S SOTW12WT
4	13	173		BTX	XBT 12-74	27.7	BTS	8 131N	158 591W	S SOTW12WT
1149	13	173		BTX	XBT 12-75	27.6	BTS	8 115N	158 583W	S SOTW12WT
601	14	173		BTX	XBT 12-76	27.6	BTS	8 116N	158 588W	S SOTW12WT
1800	14	173		BTX	XBT 12-77	27.5	BTS	8 113N	158 599W	S SOTW12WT
1153	15	173		BTX	XBT 12-78	27.4	BTS	8 127N	158 581W	S SOTW12WT
602	16	173		BTX	XBT 12-79	26.0	BTS	8 121N	159 77W	S SOTW12WT
1803	16	173		BTX	XBT 12-80	27.5	BTS	8 131N	158 597W	S SOTW12WT
556	17	173		BTX	XBT 12-81	27.2	BTS	8 133N	159 0W	S SOTW12WT
1800	17	173		BTX	XBT 12-82	27.3	BTS	8 126N	158 598W	S SOTW12WT
2354	17	173		BTX	XBT 12-83	27.6	BTS	8 134N	158 560W	S SOTW12WT
1153	18	173		BTX	XBT 12-84	27.3	BTS	8 163N	158 560W	S SOTW12WT
559	19	173		BTX	XBT 12-85	27.4	BTS	8 148N	158 571W	S SOTW12WT
2359	19	173		BTX	XBT 12-86	27.0	BTS	8 155N	158 574W	S SOTW12WT
600	20	173		BTX	XBT 12-87	27.2	BTS	8 165N	158 573W	S SOTW12WT
1800	20	173		BTX	XBT 12-88	27.2	BTS	8 170N	159 28W	S SOTW12WT
2160	20	173		BTX	XBT 12-89	26.5	BTS	8 183N	159 1W	S SOTW12WT
0	21	173		BTX	XBT 12-90	26.0	BTS	8 50N	158 567W	S SOTW12WT
305	21	173		BTX	XBT 12-91	27.0	BTS	9 24N	158 555W	S SOTW12WT
614	21	173		BTX	XBT 12-92	27.0	BTS	9 59N	158 530W	S SOTW12WT
855	21	173		BTX	XBT 12-93	26.3	BTS	10 30N	158 497W	S SOTW12WT
1222	21	173		BTX	XBT 12-94	25.8	BTS	11 90N	158 453W	S SOTW12WT
1508	21	173		BTX	XBT 12-95	27.0	BTS	11 407N	158 426W	S SOTW12WT
1800	21	173		BTX	XBT 12-96	25.8	BTS	12 135N	158 396W	S SOTW12WT
2105	21	173		BTX	XBT 12-97	25.6	BTS	12 490N	158 353W	S SOTW12WT
0	22	173		BTX	XBT 12-98	26.5	BTS	13 194N	158 325W	S SOTW12WT

TIME	DATE	TIME	IZ	SAMP		SURF.	DISP		LONG.	CRUISE
GMT	D.M.Y.	LOC	LOC	LOC	CODE	TEMP.	CODE	LAT.	LONG.	LEG-SHIP
600	22	173		BTX	XBT 12-99	25.2	BTS	14 250N	158 269W	S SOTW12WT
1200	22	173		BTX	XBT 12-100	24.4	BTS	15 342N	158 187W	S SOTW12WT
1805	22	173		BTX	XBT 12-101	23.1	BTS	16 455N	158 142W	S SOTW12WT
2351	22	173		BTX	XBT 12-102	26.0	BTS	17 527N	158 113W	S SOTW12WT
559	23	173		BTX	XBT 12-103	26.0	BTS	19 57N	158 63W	S SOTW12WT
1200	23	173		BTX	XBT 12-104	24.2	BTS	20 210N	157 554W	S SOTW12WT

THERMOGRAPH

TIME	DATE	TIME	IZ	SAMP		SURF.	DISP		LONG.	CRUISE
GMT	D.M.Y.	LOC	LOC	LOC	CODE	TEMP.	CODE	LAT.	LONG.	LEG-SHIP
443	30	1272		TGR	B THERMOGRAPH 12-01		DCP	14 166S	170 410W	S SOTW12WT
411	31	1272		TGR	E THERMOGRAPH 12-01		DCP	13 407S	170 513W	S SOTW12WT
418	31	1272		TGR	B THERMOGRAPH 12-02		DCP	13 407S	170 516W	S SOTW12WT
405	1	173		TGR	E THERMOGRAPH 12-02		DCP	12 294S	170 79W	S SOTW12WT
403	1	173		TGR	B THERMOGRAPH 12-03		DCP	12 294S	170 75W	S SOTW12WT
405	2	173		TGR	E THERMOGRAPH 12-03		DCP	8 452S	167 427W	S SOTW12WT
408	2	173		TGR	B THERMOGRAPH 12-04		DCP	8 447S	167 424W	S SOTW12WT
427	3	173		TGR	E THERMOGRAPH 12-04		DCP	4 393S	165 41W	S SOTW12WT
430	3	173		TGR	B THERMOGRAPH 12-05		DCP	4 388S	165 38W	S SOTW12WT
504	4	173		TGR	E THERMOGRAPH 12-05		DCP	0 446S	162 272W	S SOTW12WT
507	4	173		TGR	B THERMOGRAPH 12-06		DCP	0 442S	162 269W	S SOTW12WT
451	5	173		TGR	E THERMOGRAPH 12-06		DCP	3 260N	160 251W	S SOTW12WT
456	5	173		TGR	B THERMOGRAPH 12-07		DCP	3 270N	160 247W	S SOTW12WT
544	6	173		TGR	E THERMOGRAPH 12-07		DCP	8 40N	158 572W	S SOTW12WT
545	6	173		TGR	B THERMOGRAPH 12-08		DCP	8 42N	158 572W	S SOTW12WT
508	7	173		TGR	E THERMOGRAPH 12-08		DCP	8 110N	159 20W	S SOTW12WT
511	7	173		TGR	B THERMOGRAPH 12-09		DCP	8 110N	159 19W	S SOTW12WT
445	8	173		TGR	E THERMOGRAPH 12-09		DCP	8 159N	158 578W	S SOTW12WT
447	8	173		TGR	B THERMOGRAPH 12-10		DCP	8 159N	158 578W	S SOTW12WT
430	9	173		TGR	E THERMOGRAPH 12-10		DCP	8 121N	159 2W	S SOTW12WT
432	9	173		TGR	B THERMOGRAPH 12-11		DCP	8 121N	159 2W	S SOTW12WT
436	10	173		TGR	E THERMOGRAPH 12-11		DCP	8 108N	158 576W	S SOTW12WT
439	10	173		TGR	B THERMOGRAPH 12-12		DCP	8 108N	158 575W	S SOTW12WT
426	11	173		TGR	E THERMOGRAPH 12-12		DCP	8 112N	158 573W	S SOTW12WT
428	11	173		TGR	B THERMOGRAPH 12-13		DCP	8 111N	158 573W	S SOTW12WT
455	12	173		TGR	E THERMOGRAPH 12-13		DCP	8 133N	159 1W	S SOTW12WT
437	12	173		TGR	B THERMOGRAPH 12-14		DCP	8 132N	159 1W	S SOTW12WT
426	13	173		TGR	E THERMOGRAPH 12-14		DCP	8 130N	158 584W	S SOTW12WT
428	13	173		TGR	B THERMOGRAPH 12-15		DCP	8 130N	158 584W	S SOTW12WT
415	14	173		TGR	E THERMOGRAPH 12-15		DCP	8 105N	158 595W	S SOTW12WT
417	14	173		TGR	B THERMOGRAPH 12-16		DCP	8 105N	158 595W	S SOTW12WT
413	15	173		TGR	E THERMOGRAPH 12-16		DCP	8 119N	158 587W	S SOTW12WT
415	15	173		TGR	B THERMOGRAPH 12-17		DCP	8 119N	158 587W	S SOTW12WT
416	16	173		TGR	E THERMOGRAPH 12-17		DCP	8 127N	158 596W	S SOTW12WT
417	16	173		TGR	B THERMOGRAPH 12-18		DCP	8 127N	158 595W	S SOTW12WT
409	17	173		TGR	E THERMOGRAPH 12-18		DCP	8 120N	159 17W	S SOTW12WT
410	17	173		TGR	B THERMOGRAPH 12-19		DCP	8 120N	159 17W	S SOTW12WT
410	18	173		TGR	E THERMOGRAPH 12-19		DCP	8 171N	158 579W	S SOTW12WT
412	18	173		TGR	B THERMOGRAPH 12-20		DCP	8 171N	158 576W	S SOTW12WT
404	19	173		TGR	E THERMOGRAPH 12-20		DCP	8 126N	158 591W	S SOTW12WT

TIME GMT	DATE D.M.Y.	TIME TZ	SAMP LOC	IDENT.	SURF. TEMP.	DISP CODE	LAT.	LONG.	CRUISE LEG-SHIP
405	19	173	TGR	B THERMOGRAPH 12-21	DCP	8	126N	158 591W	S SOTW12WT
406	20	173	TGR	E THERMOGRAPH 12-21	DCP	8	169N	158 580W	S SOTW12WT
408	20	173	TGR	B THERMOGRAPH 12-22	DCP	8	169N	158 580W	S SOTW12WT
409	21	173	TGR	E THERMOGRAPH 12-22	DCP	9	357N	158 549W	S SOTW12WT
411	21	173	TGR	B THERMOGRAPH 12-23	DCP	9	370N	158 548W	S SOTW12WT
340	22	173	TGR	E THERMOGRAPH 12-23	DCP	13	596N	158 289W	S SOTW12WT
342	22	173	TGR	B THERMOGRAPH 12-24	UCP	13	600N	158 289W	S SOTW12WT
334	23	173	TGR	E THERMOGRAPH 12-24	DCP	18	356N	158 80W	S SOTW12WT
335	23	173	TGR	B THERMOGRAPH 12-25	DCP	18	358N	158 80W	S SOTW12WT
1800	23	173	TGR	E THERMOGRAPH 12-25	DCP	21	112N	157 538W	S SOTW12WT

INVERTEBRATE BIOLOGY-CURATOR ABRAHAM FLEMINGER (EXT. 1131)

TIME GMT	DATE D.M.Y.	TIME TZ	SAMP LOC	IDENT.	SURF. TEMP.	DISP CODE	LAT.	LONG.	CRUISE LEG-SHIP
513	30	1272	SNNT	B FLEMINGER 12-01	MIC	14	168S	170 409W	S SOTW12WT
517	30	1272	SNNT	E FLEMINGER 12-01	MIC	14	167S	170 406W	S SOTW12WT

OPEN NET

NON-SIO PROGRAMS-PROCESSOR J.L.COATS/NORTH EXT. 2846

AFROSOLS--A.W.HUGAN S.U.N.Y.

*** AIR SAMPLE ***

TIME GMT	DATE D.M.Y.	TIME TZ	SAMP LOC	IDENT.	SURF. TEMP.	DISP CODE	LAT.	LONG.	CRUISE LEG-SHIP
715	30	1272	ASNU	AEROSOL 12-01	AWH	14	95S	170 356W	S SOTW12WT
1218	30	1272	ASRU	AEROSOL 12-02	AWH	13	376S	170 429W	S SOTW12WT
2350	30	1272	ASNU	AEROSOL 12-03	AWH	13	376S	170 452W	S SOTW12WT
600	31	1272	ASNU	AEROSOL 12-04	AWH	13	437S	170 518W	S SOTW12WT
1200	31	1272	ASNU	AEROSOL 12-05	AWH	13	499S	170 486W	S SOTW12WT
2350	31	1272	ASNU	AEROSOL 12-06	AWH	13	71S	170 364W	S SOTW12WT
623	1	173	ASNU	AEROSOL 12-07	AWH	12	105S	169 529W	S SOTW12WT
1290	1	173	ASNU	AEROSOL 12-08	AWH	11	187S	169 162W	S SOTW12WT
1845	1	173	ASNU	AEROSOL 12-09	AWH	10	158S	168 356W	S SOTW12WT
2350	2	173	ASNU	AEROSOL 12-10	AWH	5	234S	165 361W	S SOTW12WT
0	3	173	ASNU	AEROSOL 12-11	AWH	5	218S	165 350W	S SOTW12WT
410	3	173	ASNU	AEROSOL 12-12	AWH	4	420S	165 62W	S SOTW12WT
1200	3	173	ASNU	AEROSOL 12-13	AWH	3	256S	164 115W	S SOTW12WT
1650	3	173	ASNU	AEROSOL 12-14	AWH	2	387S	163 392W	S SOTW12WT
2356	3	173	ASNU	AEROSOL 12-15	AWH	1	314S	162 550W	S SOTW12WT
600	4	173	ASNU	AEROSOL 12-16	AWH	0	364S	162 216W	S SOTW12WT

TIME	DATE	FIRE	IZ	SAMP	SAMPLE	IDENT.	TEMP.	DISP	LAT.	LONG.	CRUISE		
GMT	O.M.Y.	LOC	LDC	CODE			CGDE				LEG-SHIP		
1200	4	173		ASNU	AEROSOL	12-17	AWH	0	166N	161	403W	S	SOTW12WT
1500	4	173		ASNU	AEROSOL	12-18	AWH	1	234N	161	127W	S	SOTW12WT
2356	4	173		ASNU	AEROSOL	12-19	AWH	2	297N	160	461W	S	SOTW12WT
610	5	173		ASNU	AEROSOL	12-20	AWH	3	413N	160	198W	S	SOTW12WT
1210	5	173		ASNU	AEROSOL	12-21	AWH	4	458N	159	582W	S	SOTW12WT
1823	5	173		ASNU	AEROSOL	12-22	AWH	5	51N	159	380W	S	SOTW12WT
2345	5	173		ASNU	AEROSOL	12-23	AWH	6	590N	159	189W	S	SOTW12WT
625	6	173		ASNU	AEROSOL	12-24	AWH	8	117N	158	568W	S	SOTW12WT
1200	6	173		ASNU	AEROSOL	12-25	AWH	8	99N	159	OW	S	SOTW12WT
1800	6	173		ASNU	AEROSOL	12-26	AWH	8	121N	158	557W	S	SOTW12WT
0	7	173		ASNU	AEROSOL	12-27	AWH	8	126N	158	585W	S	SOTW12WT
555	7	173		ASNU	AEROSOL	12-28	AWH	8	112N	159	7W	S	SOTW12WT
1155	7	173		ASNU	AEROSOL	12-29	AWH	8	151N	158	588W	S	SOTW12WT
1900	7	173		ASNU	AEROSOL	12-30	AWH	8	156N	158	579W	S	SOTW12WT
2	8	173		ASNU	AEROSOL	12-31	AWH	8	116N	158	587W	S	SOTW12WT
610	8	173		ASNU	AEROSOL	12-32	AWH	8	171N	158	586W	S	SOTW12WT
1213	8	173		ASNU	AEROSOL	12-33	AWH	8	127N	158	578W	S	SOTW12WT
1830	8	173		ASNU	AEROSOL	12-34	AWH	8	114N	158	589W	S	SOTW12WT
21	9	173		ASNU	AEROSOL	12-35	AWH	8	134N	158	589W	S	SOTW12WT
615	9	173		ASNU	AEROSOL	12-36	AWH	8	140N	158	584W	S	SOTW12WT
1145	9	173		ASNU	AEROSOL	12-37	AWH	8	109N	159	14W	S	SOTW12WT
1804	9	173		ASNU	AEROSOL	12-38	AWH	8	155N	158	578W	S	SOTW12WT
2358	9	173		ASNU	AEROSOL	12-39	AWH	8	88N	159	21W	S	SOTW12WT
600	10	173		ASNU	AEROSOL	12-40	AWH	8	122N	158	569W	S	SOTW12WT
1210	10	173		ASNU	AEROSOL	12-41	AWH	8	103N	158	595W	S	SOTW12WT
1810	10	173		ASNU	AEROSOL	12-42	AWH	8	145N	158	585W	S	SOTW12WT
2	11	173		ASNU	AEROSOL	12-43	AWH	8	125N	158	596W	S	SOTW12WT
600	11	173		ASNU	AEROSOL	12-44	AWH	8	109N	158	598W	S	SOTW12WT
1753	11	173		ASNU	AEROSOL	12-45	AWH	8	88N	158	588W	S	SOTW12WT
0	12	173		ASNU	AEROSOL	12-46	AWH	8	107N	158	594W	S	SOTW12WT
600	12	173		ASNU	AEROSOL	12-47	AWH	8	113N	158	594W	S	SOTW12WT
1147	12	173		ASNU	AEROSOL	12-48	AWH	8	103N	158	598W	S	SOTW12WT
1804	12	173		ASNU	AEROSOL	12-49	AWH	8	91N	159	1W	S	SOTW12WT
0	13	173		ASNU	AEROSOL	12-50	AWH	8	130N	158	590W	S	SOTW12WT
609	13	173		ASNU	AEROSOL	12-51	AWH	8	139N	159	1W	S	SOTW12WT
1714	13	173		ASNU	AEROSOL	12-52	AWH	8	120N	158	577W	S	SOTW12WT
1804	13	173		ASNU	AEROSOL	12-53	AWH	8	144N	158	554W	S	SOTW12WT
2330	13	173		ASNU	AEROSOL	12-54	AWH	8	107N	158	572W	S	SOTW12WT
610	14	173		ASNU	AEROSOL	12-55	AWH	8	115N	158	587W	S	SOTW12WT
1145	14	173		ASNU	AEROSOL	12-56	AWH	8	121N	158	593W	S	SOTW12WT
1819	14	173		ASNU	AEROSOL	12-57	AWH	8	116N	158	598W	S	SOTW12WT
0	15	173		ASNU	AEROSOL	12-58	AWH	8	113N	158	592W	S	SOTW12WT
555	15	173		ASNU	AEROSOL	12-59	AWH	8	117N	158	588W	S	SOTW12WT
1200	15	173		ASNU	AEROSOL	12-60	AWH	8	126N	158	579W	S	SOTW12WT
1610	15	173		ASNU	AEROSOL	12-61	AWH	8	103N	158	594W	S	SOTW12WT
2359	15	173		ASNU	AEROSOL	12-62	AWH	8	125N	158	586W	S	SOTW12WT
600	16	173		ASNU	AEROSOL	12-63	AWH	8	122N	159	74W	S	SOTW12WT
1203	16	173		ASNU	AEROSOL	12-64	AWH	8	129N	158	591W	S	SOTW12WT
1810	16	173		ASNU	AEROSOL	12-65	AWH	8	131N	158	596W	S	SOTW12WT
2358	16	173		ASNU	AEROSOL	12-66	AWH	8	121N	159	4W	S	SOTW12WT
600	17	173		ASNU	AEROSOL	12-67	AWH	8	133N	158	600W	S	SOTW12WT
1145	17	173		ASNU	AEROSOL	12-68	AWH	8	135N	159	5W	S	SOTW12WT
1810	17	173		ASNU	AEROSOL	12-69	AWH	8	127N	158	596W	S	SOTW12WT

TIME GMT	DATE D.M.Y.	TIME TZ	SAMP LOC CODE	SAMPLE IDENT.	SURF. TEMP.	DISP CODE	LAT.	LUNG.	CRUISE LEG-SHIP
2359	17	173	ASNU	AEROSOL 12-70	AWH	8	126N 158 560W	S	SOTW12WT
553	18	173	ASNU	AEROSOL 12-71	AWH	8	152N 158 592W	S	SOTW12WT
1145	18	173	ASNU	AEROSOL 12-72	AWH	8	163N 158 561W	S	SOTW12WT
1745	18	173	ASNU	AEROSOL 12-73	AWH	8	114N 158 578W	S	SOTW12WT
5	19	173	ASNU	AEROSOL 12-74	AWH	8	131N 158 598W	S	SOTW12WT
600	19	173	ASNU	AEROSOL 12-75	AWH	8	148N 158 571W	S	SOTW12WT
1200	19	173	ASNU	AEROSOL 12-76	AWH	8	153N 158 572W	S	SOTW12WT
1810	19	173	ASNU	AEROSOL 12-77	AWH	8	159N 158 555W	S	SOTW12WT
5	20	173	ASNU	AEROSOL 12-78	AWH	8	156N 158 574W	S	SOTW12WT
610	20	173	ASNU	AEROSOL 12-79	AWH	8	168N 158 572W	S	SOTW12WT
1145	20	173	ASNU	AEROSOL 12-80	AWH	8	181N 158 597W	S	SOTW12WT
1800	20	173	ASNU	AEROSOL 12-81	AWH	8	170N 159 28W	S	SOTW12WT
2330	20	173	ASNU	AEROSOL 12-82	AWH	8	452N 158 573W	S	SOTW12WT
610	21	173	ASNU	AEROSOL 12-83	AWH	9	591N 158 531W	S	SOTW12WT
1205	21	173	ASNU	AEROSOL 12-84	AWH	11	64N 158 456W	S	SOTW12WT
1800	21	173	ASNU	AEROSOL 12-85	AWH	12	135N 158 396W	S	SOTW12WT
10	22	173	ASNU	AEROSOL 12-86	AWH	13	212N 158 323W	S	SOTW12WT
610	22	173	ASNU	AEROSOL 12-87	AWH	14	269N 158 267W	S	SOTW12WT
1210	22	173	ASNU	AEROSOL 12-88	AWH	15	361N 158 185W	S	SOTW12WT
1800	22	173	ASNU	AEROSOL 12-89	AWH	16	445N 158 143W	S	SOTW12WT
2348	22	173	ASNU	AEROSOL 12-90	AWH	17	521N 158 113W	S	SOTW12WT
559	23	173	ASNU	AEROSOL 12-91	AWH	19	57N 158 63W	S	SOTW12WT
1145	23	173	ASNU	AEROSOL 12-92	AWH	20	179N 157 556W	S	SOTW12WT

END SAMPLE INDEX