

INFORMAL REPORT AND INDEX OF
NAVIGATION, DEPTH, MAGNETIC AND SUBBOTTOM PROFILER DATA
(Issued September 1988)

RAITT EXPEDITION

LEG 2

=====

R/V Washington

Acapulco, Mexico (11 February 1988)
to
Manzanillo, Mexico (13 March 1988)

Chief Scientist - R. Batiza

Northwestern University

Resident Marine Technician - R. Comer

Post-Cruise Processing and Report Preparation
by Geological Data Center, Scripps Institution of Oceanography

Data Collection and Processing Funded by NSF
Grant Number OCE87-02835

NOTE: This is an index of underway geophysical data edited and processed after the completion of the cruise leg and is intended primarily for informal use within the institution. This document is not to be reproduced or distributed outside Scripps without prior approval of the chief scientist or the Geological Data Center, Scripps Institution of Oceanography, La Jolla, California 92093.

GDC Cruise I.D.# 237

INFORMAL REPORT AND INDEX OF NAVIGATION
AND UNDERWAY GEOPHYSICAL DATA

Processed by the Geological Data Center
Scripps Institution of Oceanography

Contents:

Index Chart - gives track of cruise leg, dates, ports, and mileage
of each type of data collected.

Track Charts - annotated with dates and hour ticks.

Profiles - depth, magnetic anomaly and gravity free air anomaly
vs. distance. Sections of track having subbottom
profiles (airgun or watergun) records have a wide black
- line along the bottom of the profile. Sections having
Sea Beam are indicated by a narrow black line.

Sample Index - list of beginning and end times and positions of all
underway records as well as all other samples and
measurements (geology, biology, physical oceanography,
etc.) collected on the cruise leg.

NOTE: One or more of the underway data types may not be collected
on a given cruise leg.

For information on the availability and reproduction costs of data in
the following forms, contact S. M. Smith, Curator, Geological Data
Center, Scripps Institution of Oceanography, La Jolla, CA 92093.
Phone (619)534-2752.

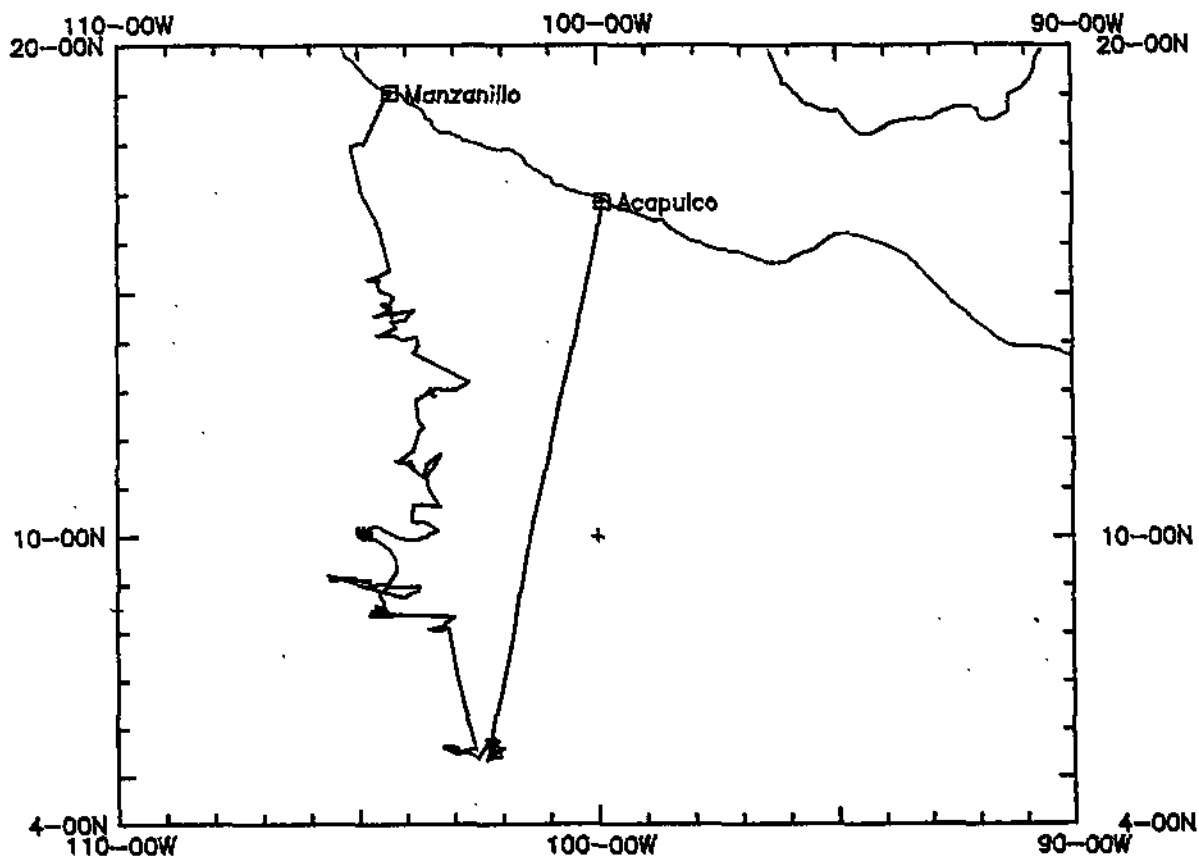
1. Navigation listing with times and positions of course and
speed changes, fixes and drift velocity.
2. Depth compilation plots - compilation plots at the
traditional scale of 4in/degree longitude (1:1,000,000) are
no longer produced for Sea Beam cruises. Custom plots
may be requested of vertical beam (2 $\frac{2}{3}$ degree beam width)
depths retrieved at one minute intervals of ship time.
3. Plots of depths, magnetics or gravity profiles along track -
custom plots at various map and profile scales on Mercator
projection may be requested.
4. Separate time series files of navigation, depth, gravity and
magnetics as well as these data merged in the MGD77 Exchange
format on magnetic tape.
5. Microfilm or Xerox copies of:
 - a. Echosounder records - 12 and 3.5 kHz frequency
 - b. Subbottom profiler records
 - c. Magnetometer records
 - d. Underway data log book

SIO Sea Beam Data

The following forms are available, subject to approval of the cruise leg chief scientist:

- 1) Archive copy of contour swath books generated in real time on board ship available for inspection at the data center.
- 2) Microfilm (35mm flowfilm) containing swath books plus, for some cruises, the Sea Beam monitor record and navigation list.
- 3) Sea Beam merged tapes - Sea Beam data merged with navigation. (Navigation is edited to the extent that DR courses and speeds are edited and poor fixes are removed after inspection of drift vectors between fix pairs. No editing is done on the basis of adjusting to overlapping Sea Beam swaths.)
- 4) Archive contour plots - 16"/degree chart scale, with contour interval nominally 50m, are generated for all transit lines. Some survey areas are plotted at appropriate scales as well. Available for inspection at data center; additional copies may be generated from plot files stored on tape.
- 5) Custom generated plots of Sea Beam swaths on Mercator projection in four colors at variable plot scales and contour intervals. There are provisions to adjust positions of individual track lines and to edit out beams (bad data or overlapping data on inside of turns).

revised October 1986



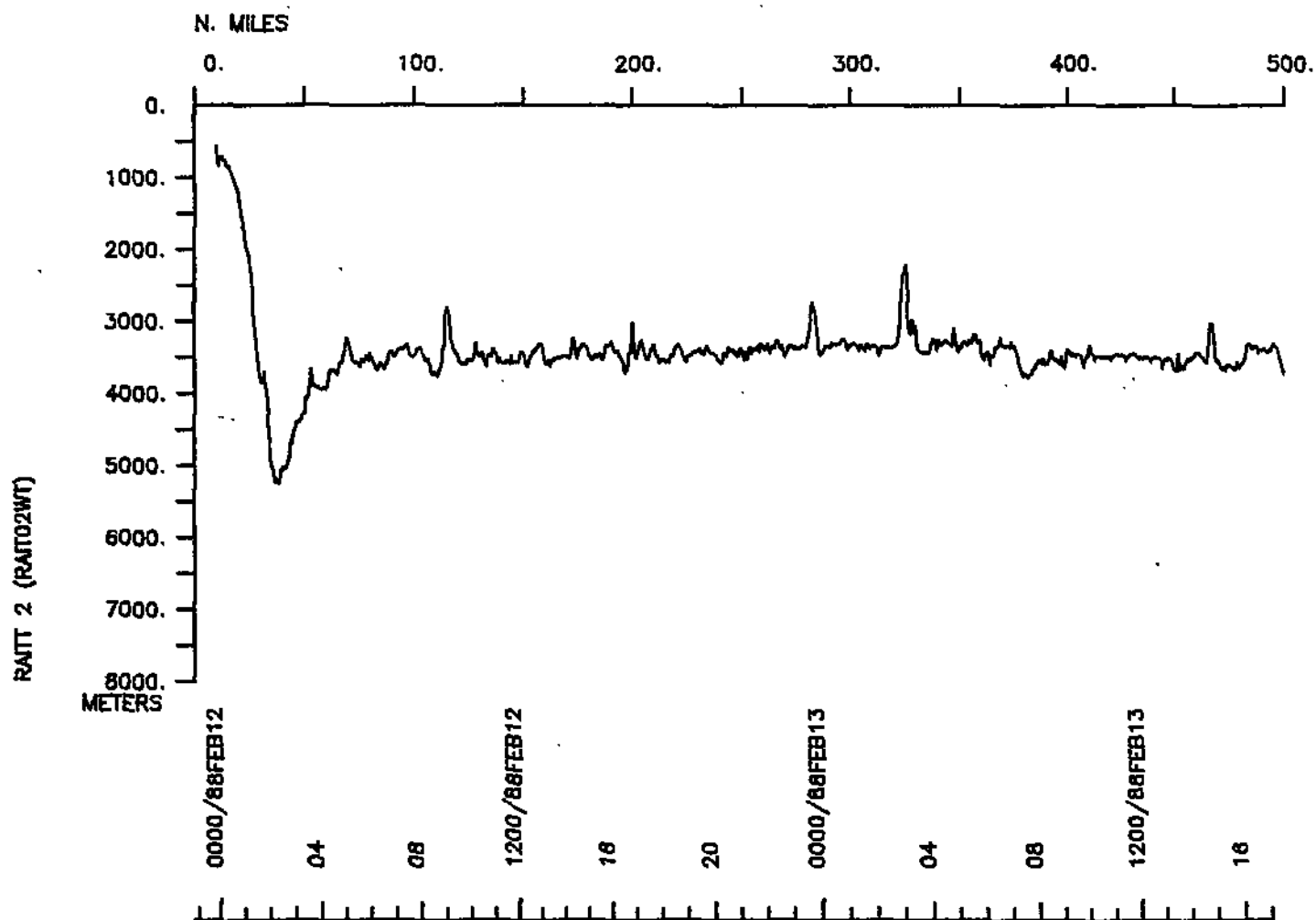
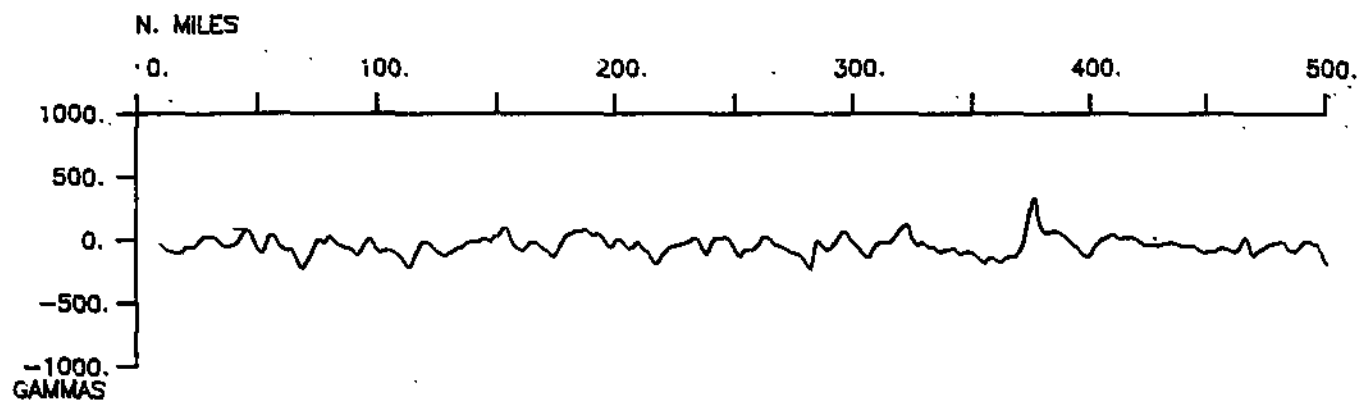
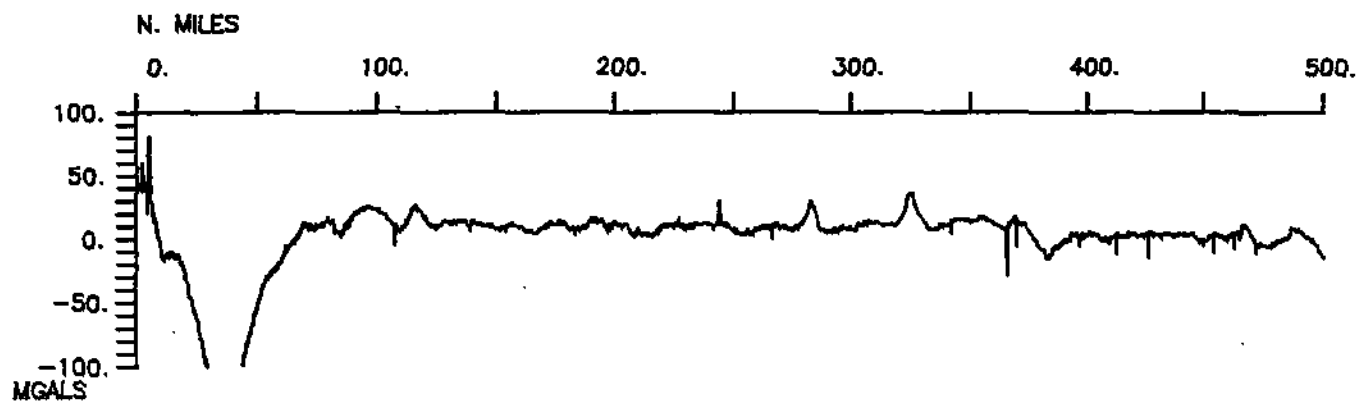
RAITT LEG 2 (RAIT02WT)

RAITT EXPEDITION LEG 2

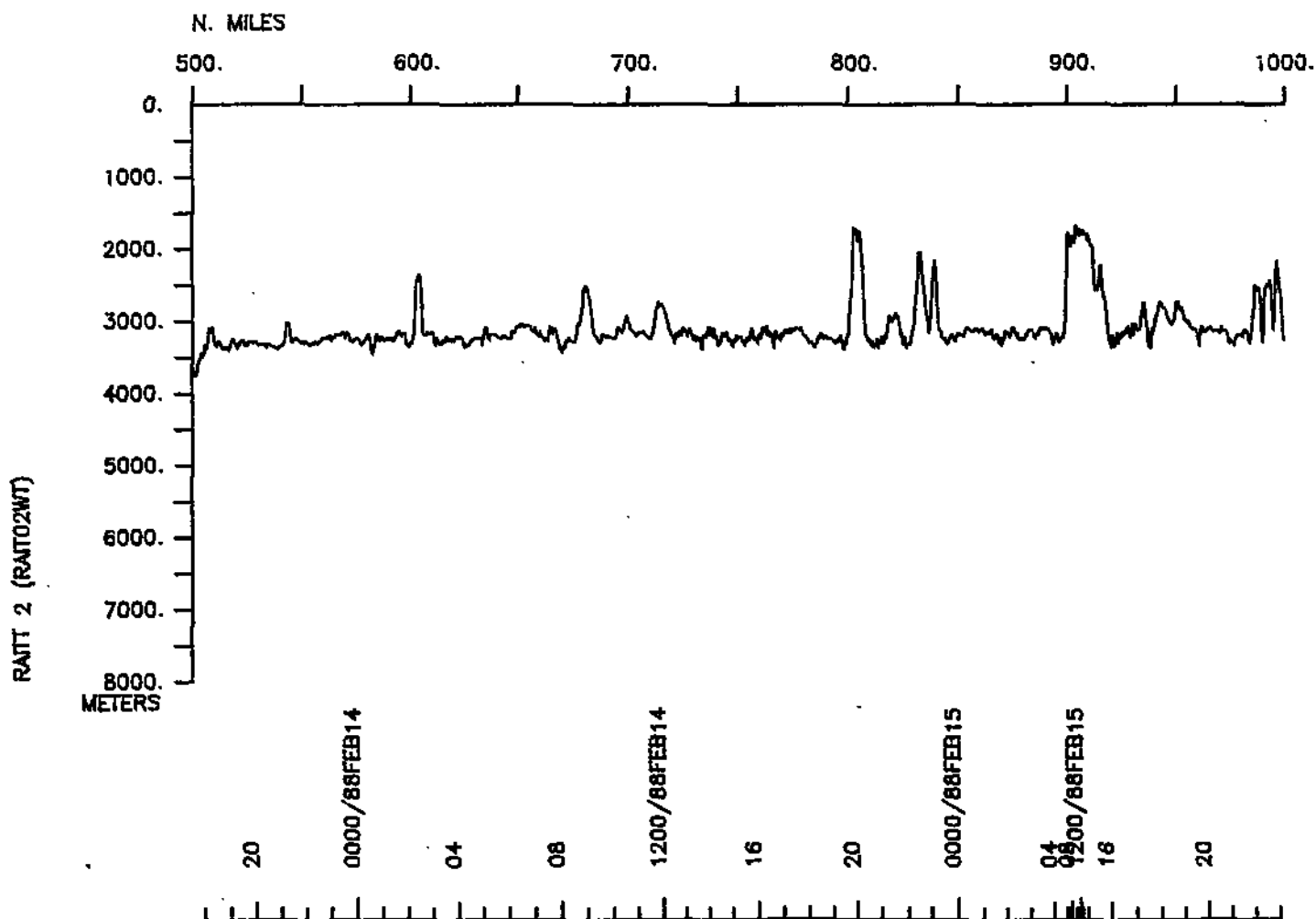
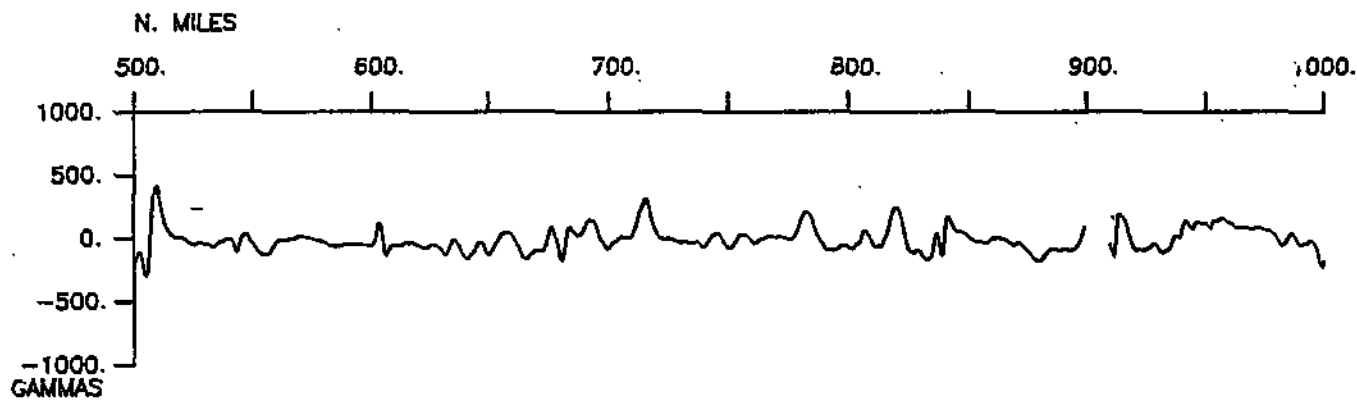
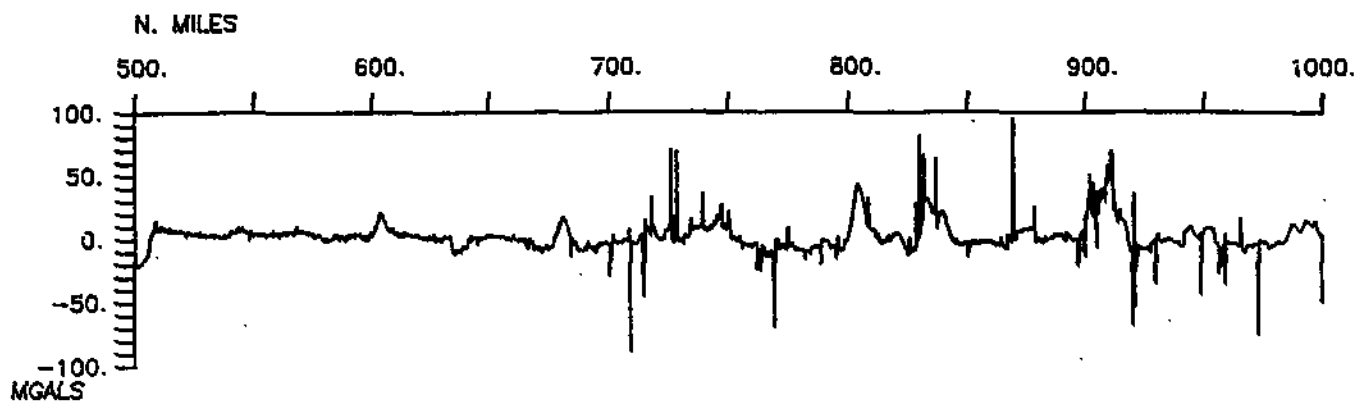
CHIEF SCIENTIST: R. Batiza (Northwestern University)
 PORTS: Acapulco - Manzanillo, Mexico
 DATES: 11 February - 13 March 1988
 SHIP: R/V T. Washington

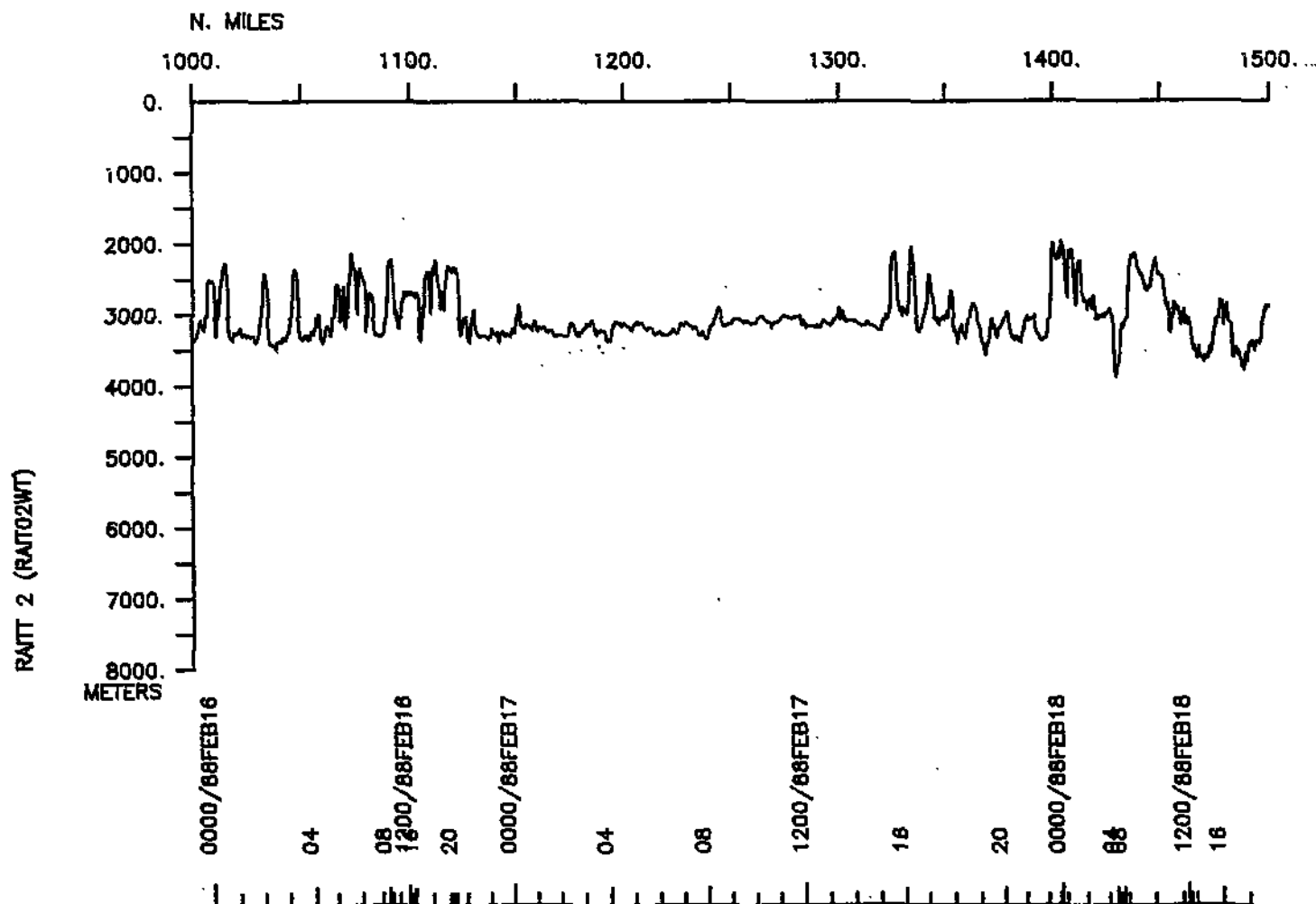
TOTAL MILEAGE OF UNDERWAY DATA COLLECTED

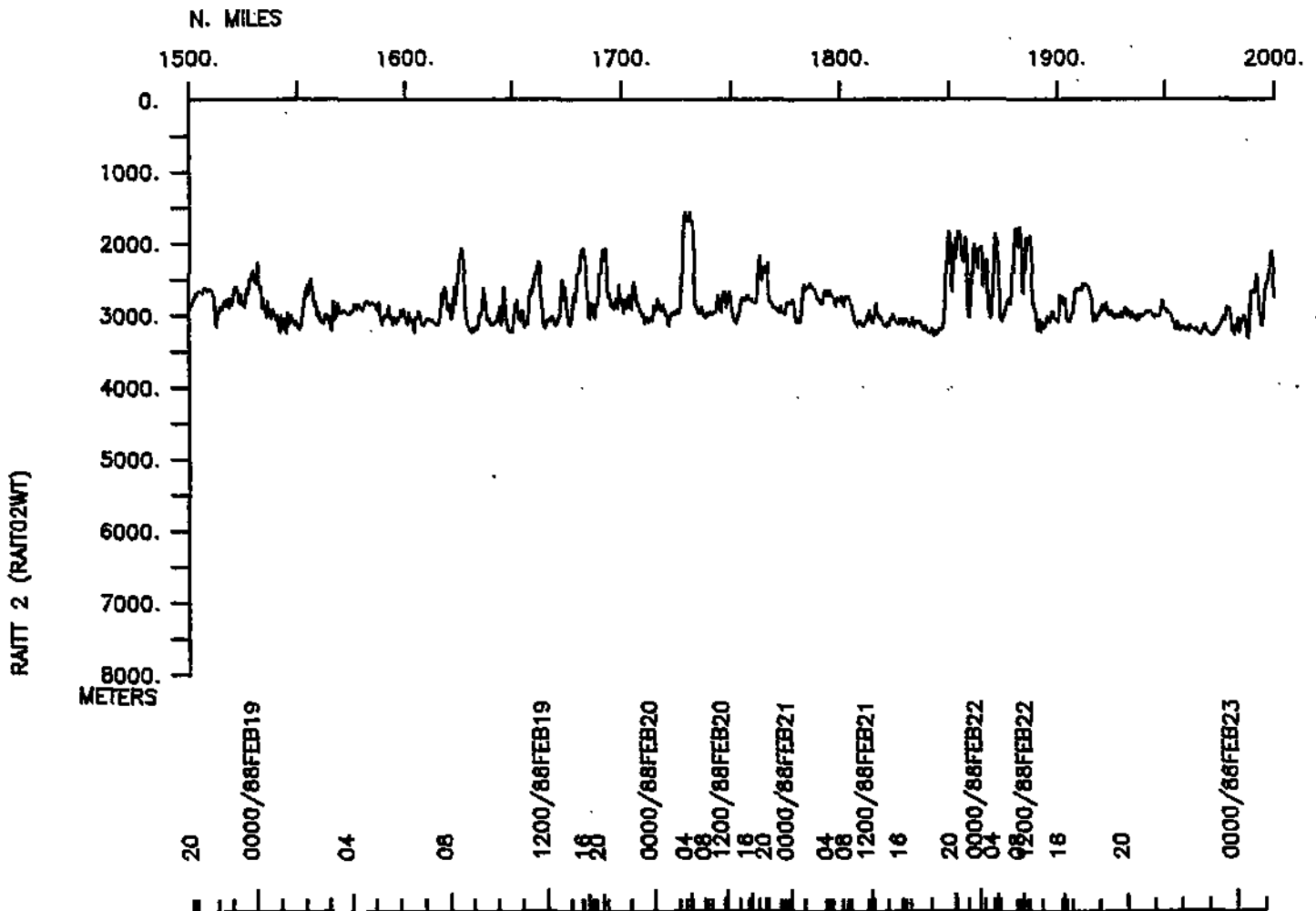
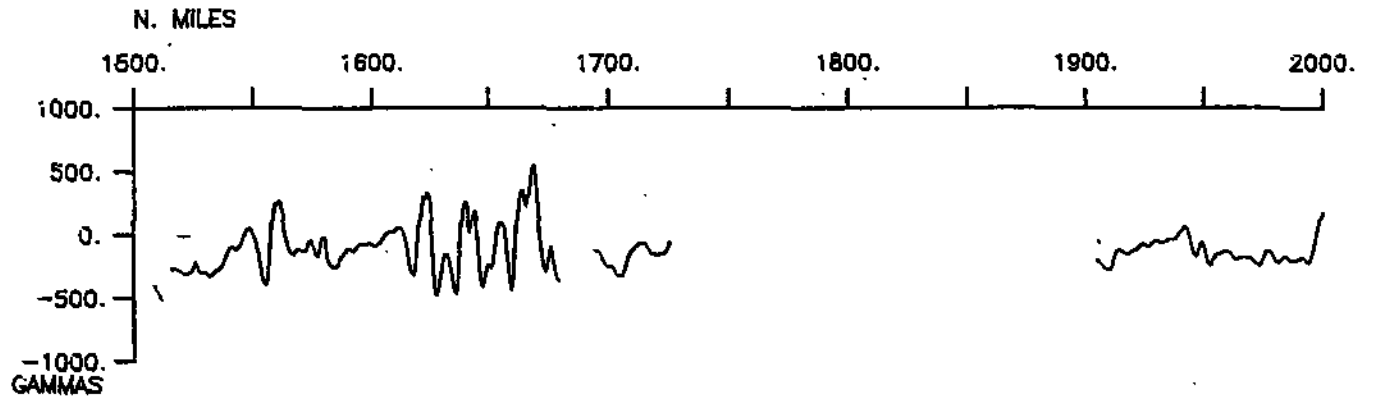
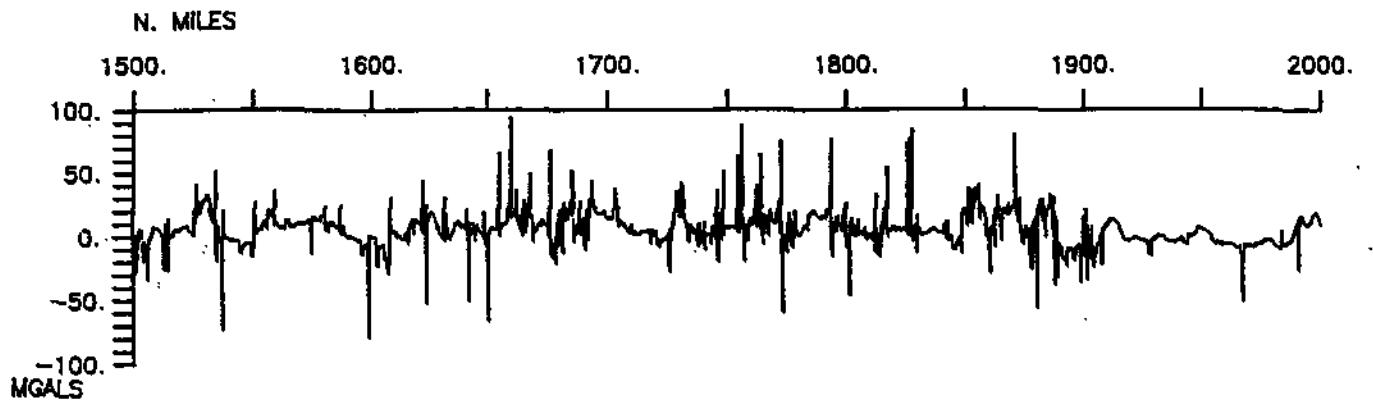
- 1) Cruise - 4365 miles
- 2) Bathymetry - 4350 miles
- 3) Magnetics - 2475 miles
- 4) Seismic Reflection - none collected
- 5) Gravity - 4365 miles
- 6) Sea Beam - 4350 miles

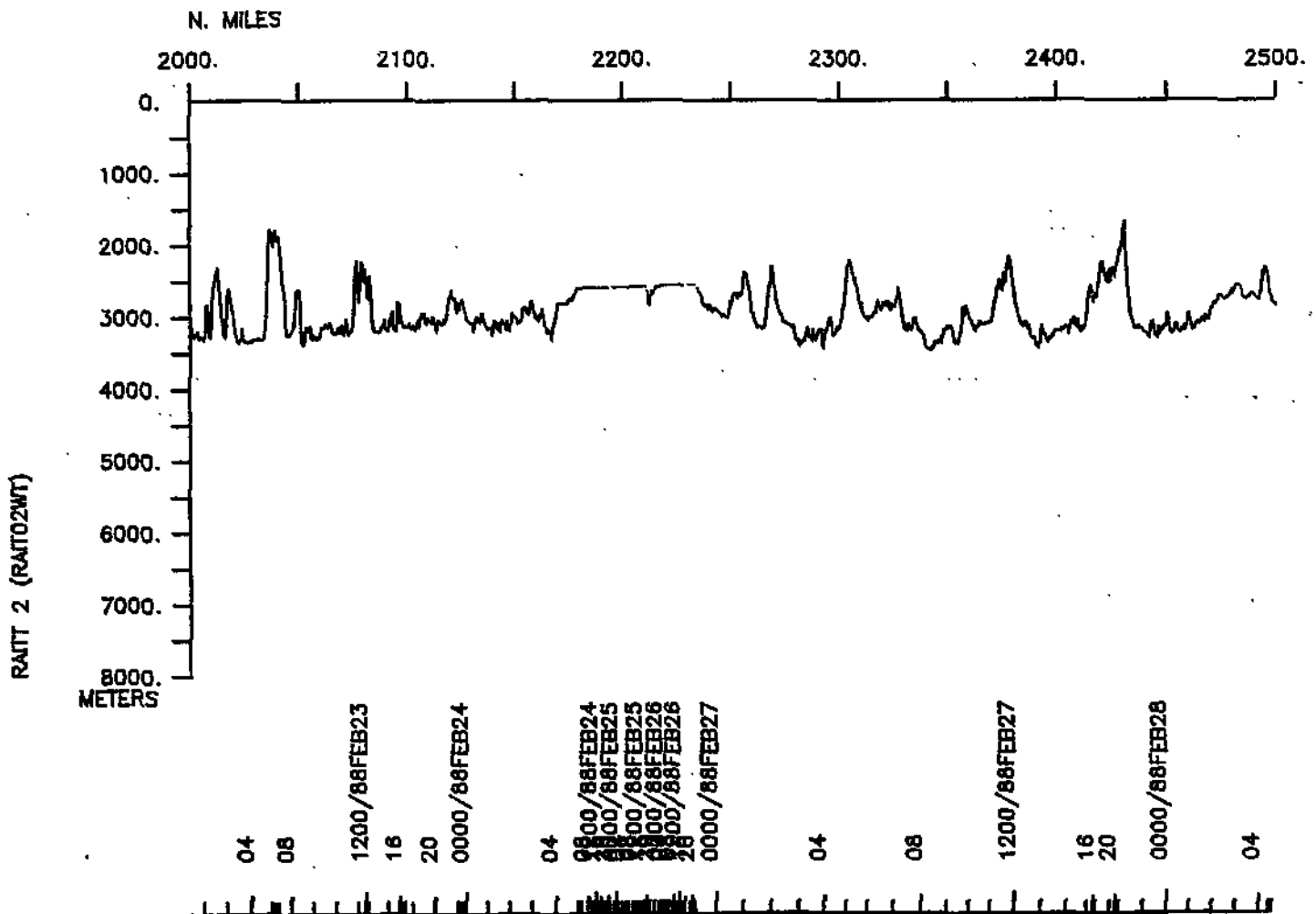
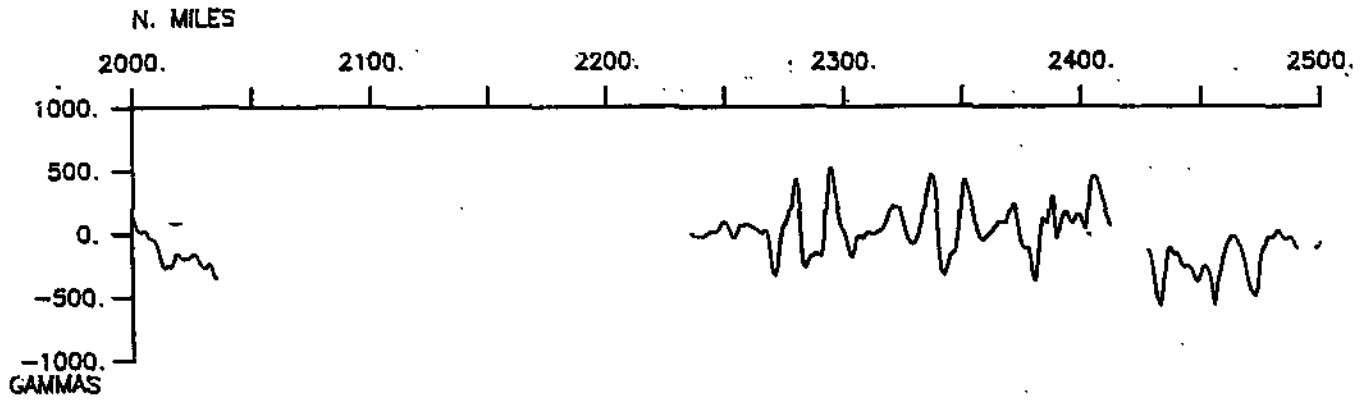
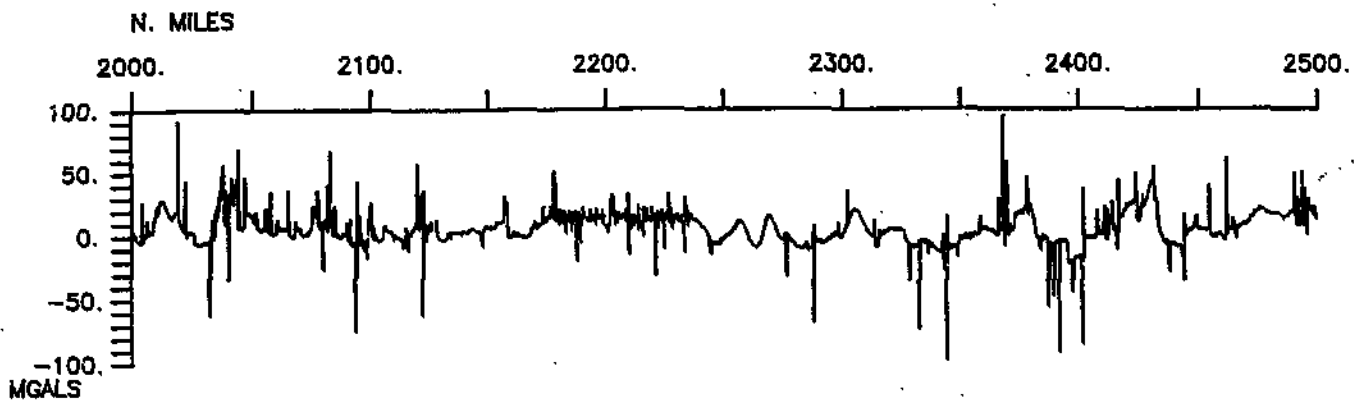


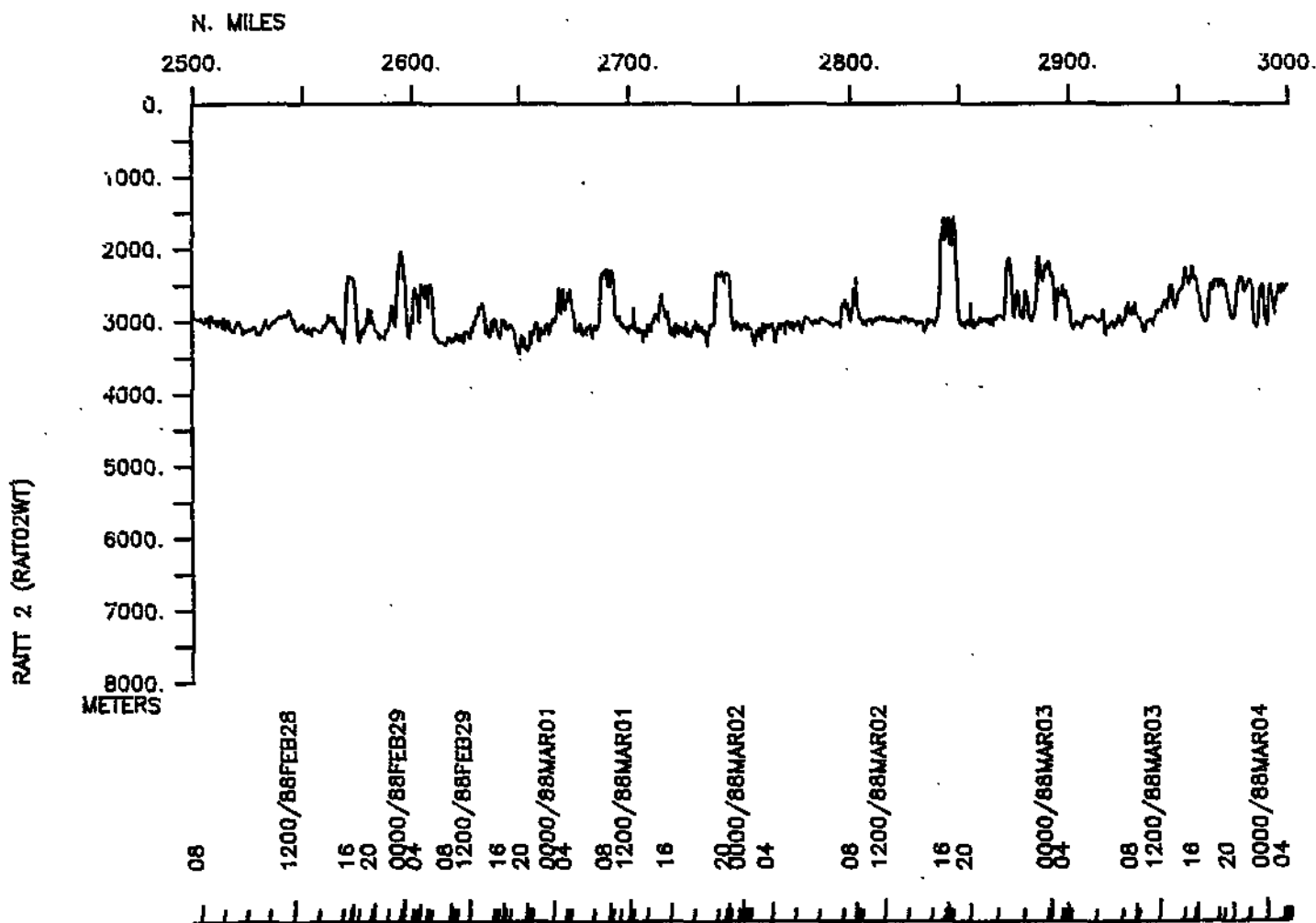
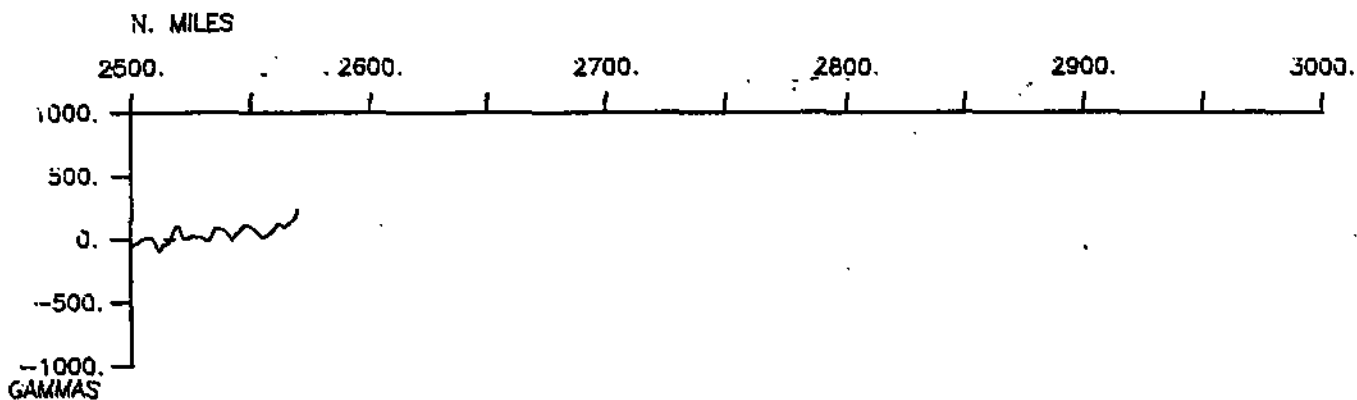
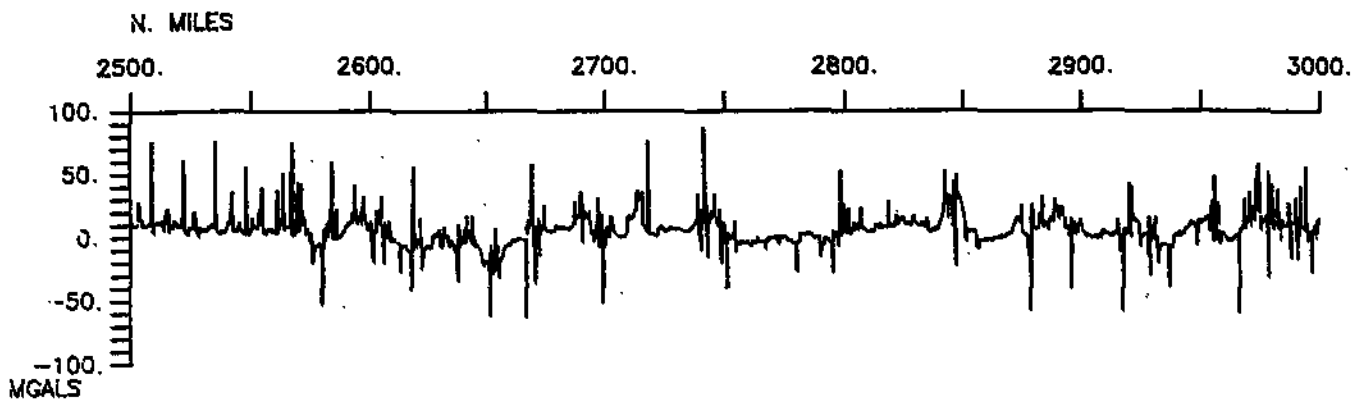
SEABEAM

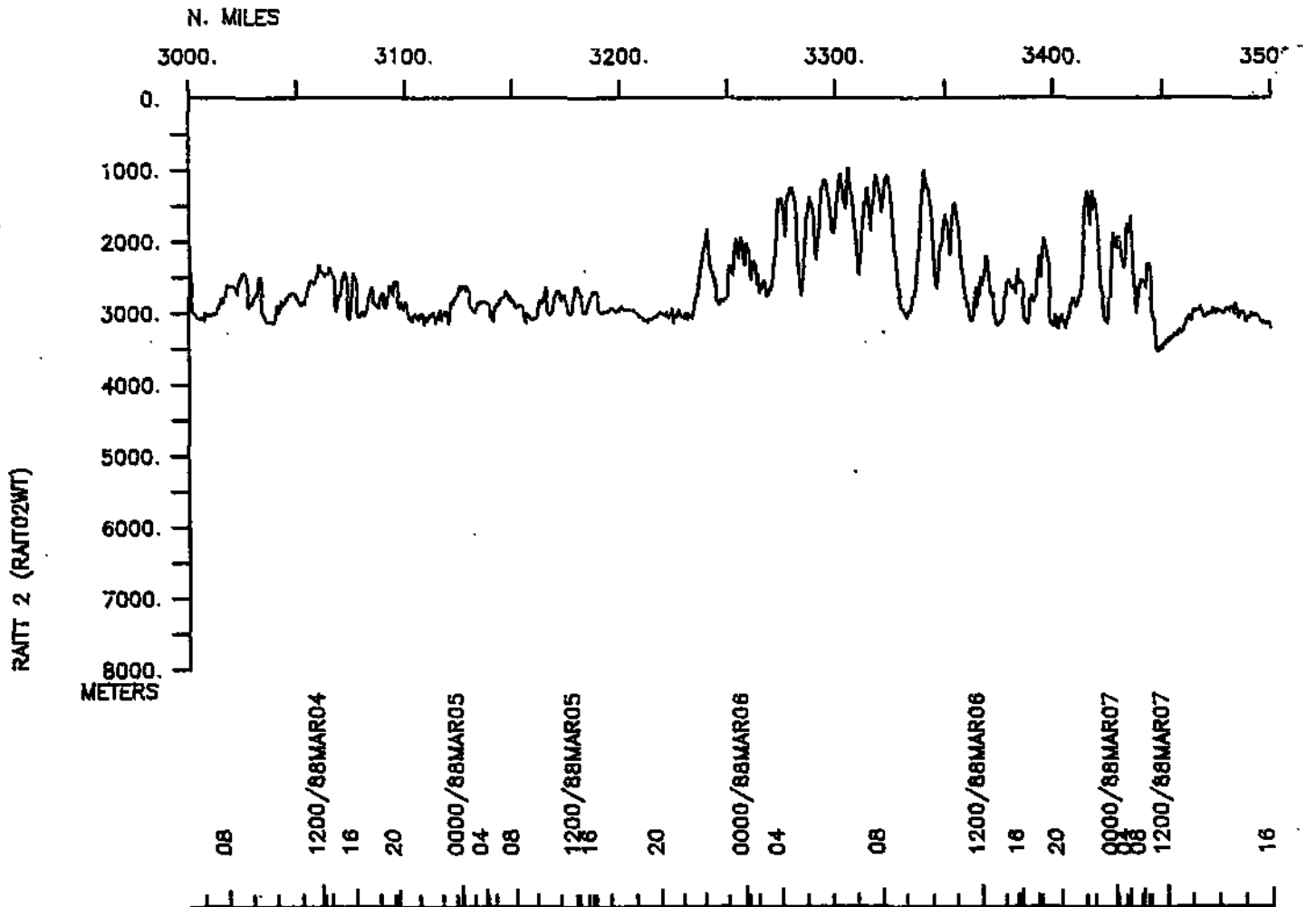
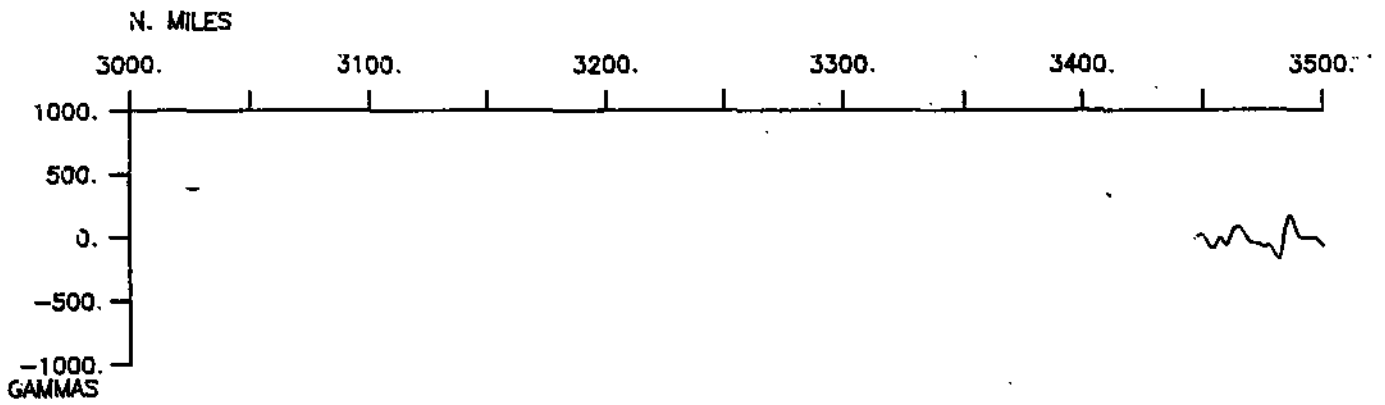
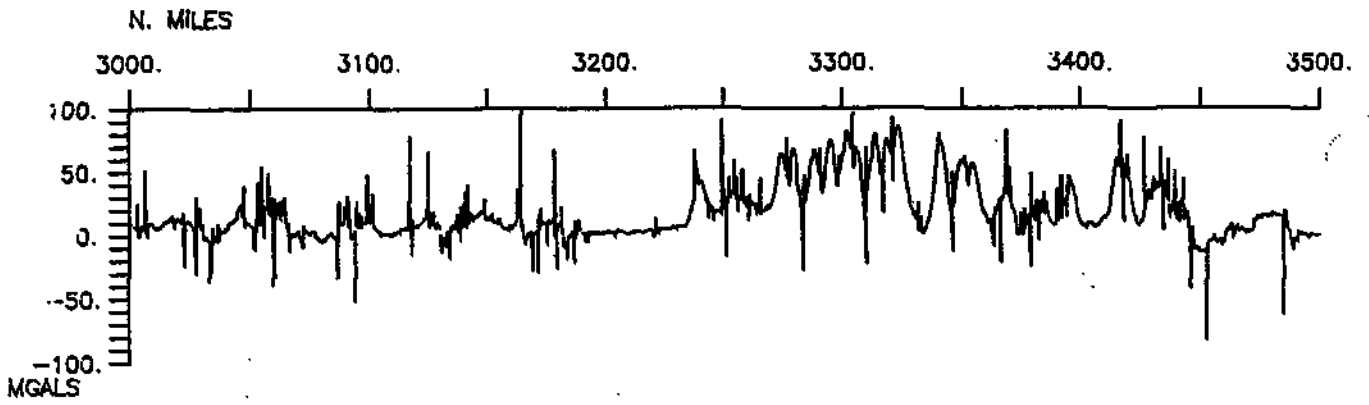


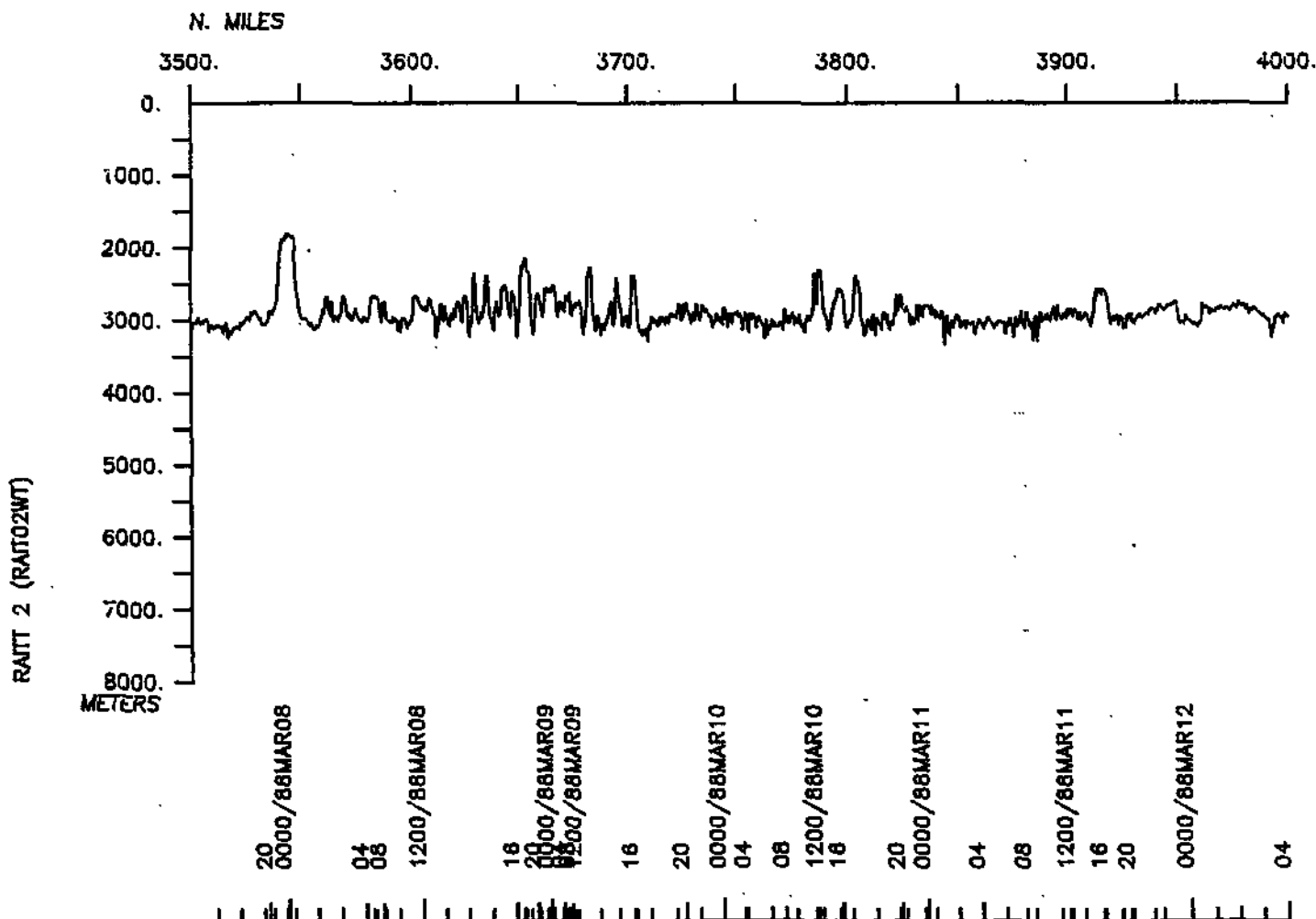
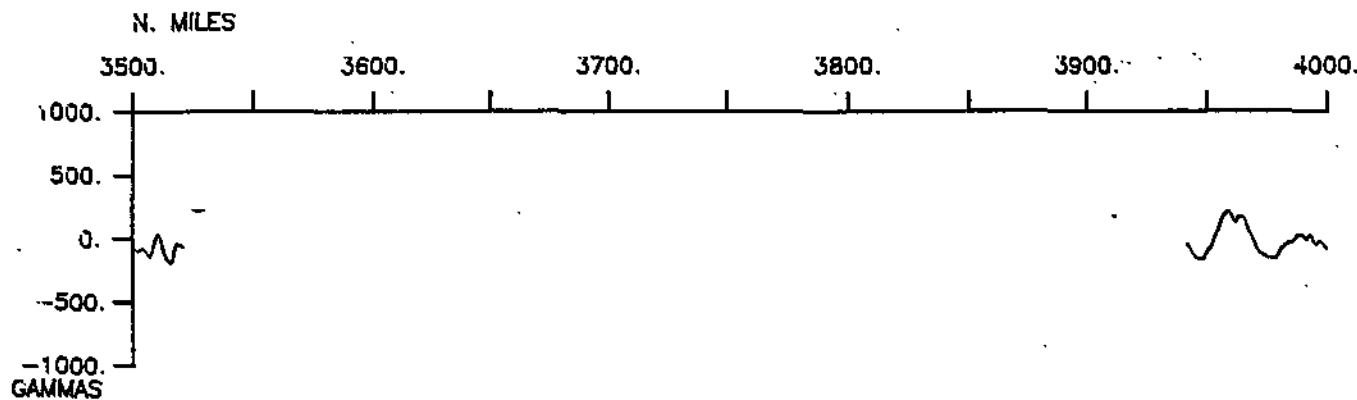
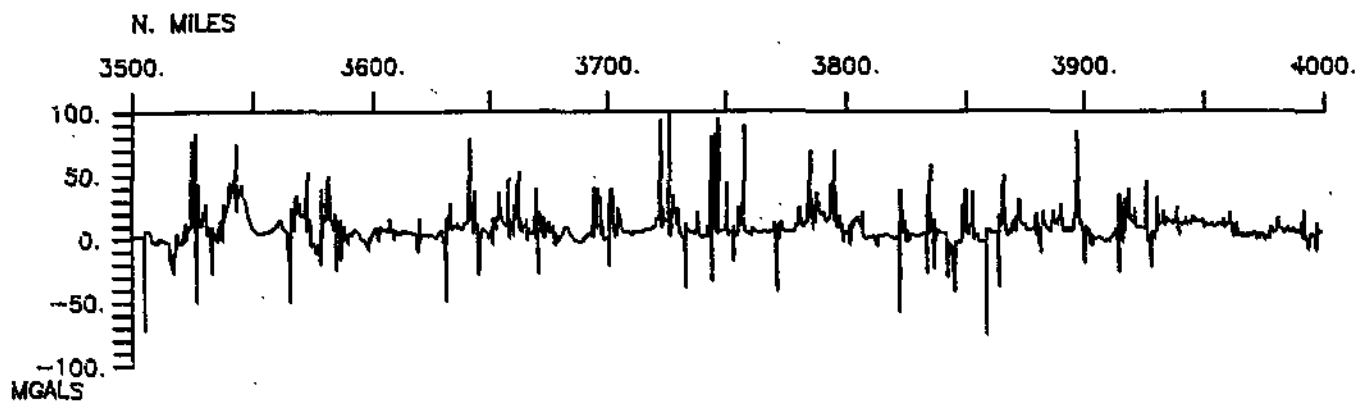


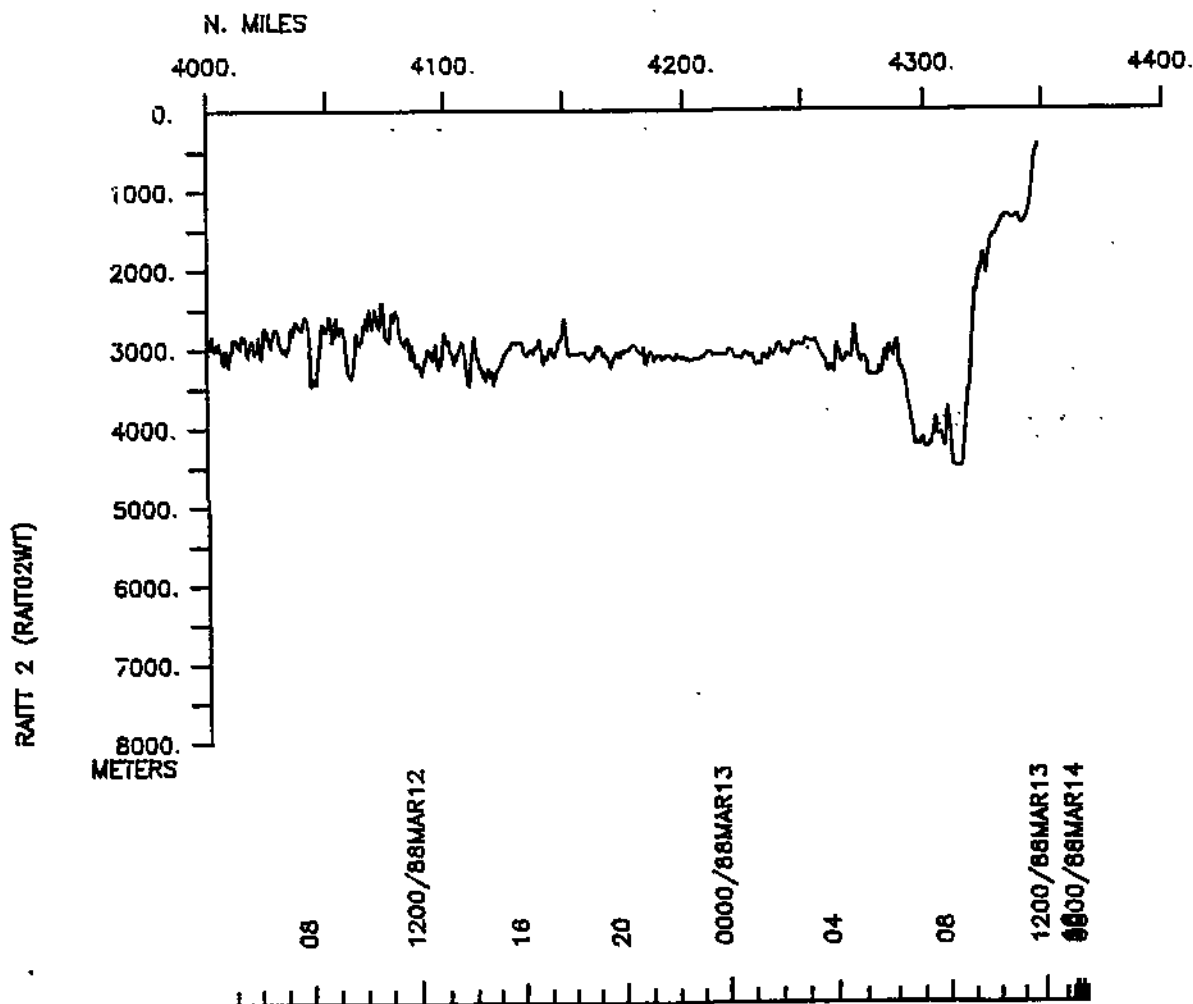
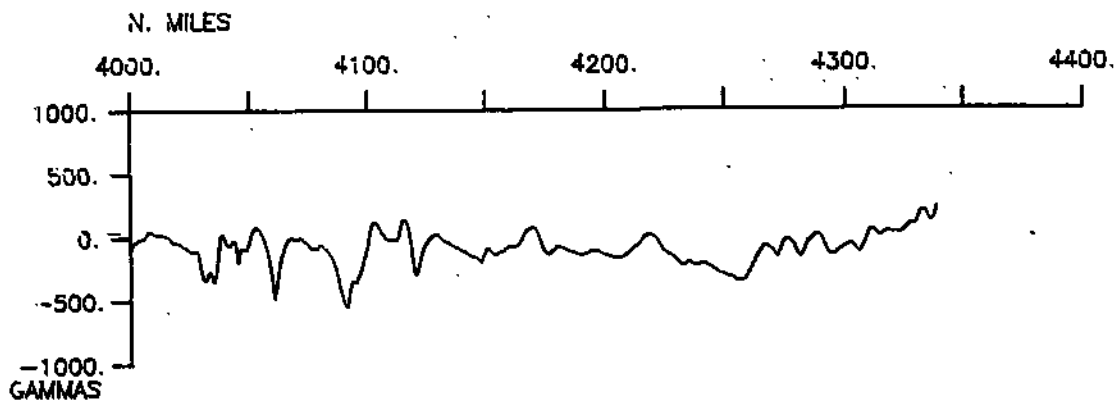
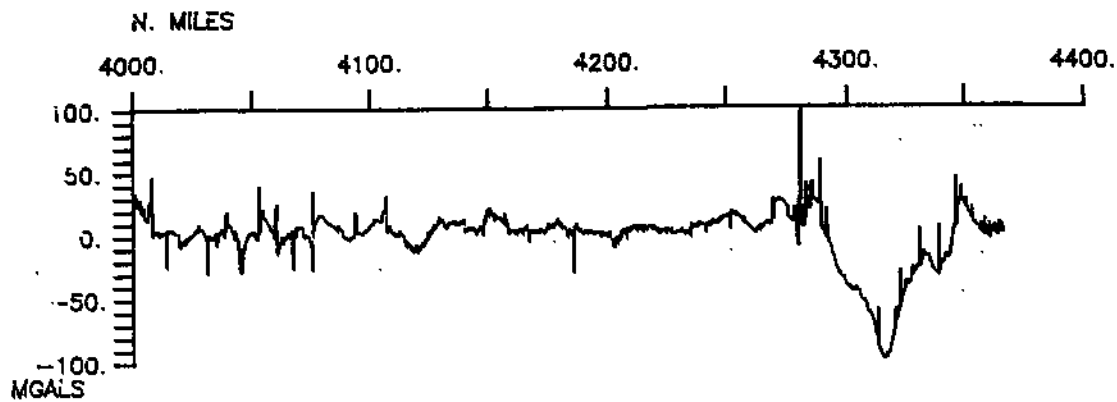












S.I.O. SAMPLE INDEX

(Issued September 1988)

RAITT EXPEDITION

Leg 2

=====

R/V T. Washington

Acapulco, Mexico (11 February 1988)
to
Manzanillo, Mexico (13 March 1988)

Chief Scientist - R. Batiza

Northwestern University

The Sample Index is a first level interdisciplinary listing of time, position, sample identification and disposition of all samples, records and measurements collected on this cruise leg. The index data are encoded at sea by the resident marine technician and processed on shore by the S.I.O. Geological Data Center shortly after the completion of the cruise leg.

Positions are interpolated on the basis of sample time by comparison to a single, edited navigation file. Samples beginning at one time and position and ending at another are entered on two consecutive lines. Disposition and sample type are represented by three and four character codes to permit further computer searches on these parameters. (Listings defining these codes are available from the Geological Data Center.)

GDC Cruise I.D.# 237

**** PORTS ****

2251 110288	LGPT B ACAPULCO, MEXICO	16-51 N 99-56 W fRAIT02WT
1200 130388	LGPT E MANZANILLO, MEXICO	19-03 N 104-20 W fRAIT02WT

**** PERSONNEL ****

	NAME	***TITLE***	***AFFILIATION***	**CRID**
PECS NWU	BATIZA, DR. R.	CHIEF SCIENTIST	NORTHWESTERN UNIV.	RAIT02WT
PERT STS	COMER, R. L.	RESIDENT TECH.	SCRIPPS INSTITUTION	RAIT02WT
PESP SIX	SACK, DR. R. O.	PROFESSOR	PURDUE UNIVERSITY	RAIT02WT
PESP SIX	VANKO, DR. D.	ASSIST. PROF.	GEORGIA STATE UNIV.	RAIT02WT
PESP NWU	KARSTEN, DR. J.	ASSIST. PROF.	NORTHWESTERN UNIV.	RAIT02WT
PECT STS	MOORE, M.	COMPUTER TECH.	SCRIPPS INSTITUTION	RAIT02WT
PEBE STS	PHILLIPS, J.	SEABEAM ENGINEER	SCRIPPS INSTITUTION	RAIT02WT
PEBO STS	SMITH, W.	SEABEAM OPERATOR	SCRIPPS INSTITUTION	RAIT02WT
PESP SIX	GEE, L.	TEACH. ASSIST.	PURDUE UNIVERSITY	RAIT02WT
PESP GSU	MILBY, B.	TECHNICIAN	U.S. GEOLOGICAL SURVEY	RAIT02WT
PESP SIX	DEXTRAZE, B.	RESEARCH ASSIST.	PURDUE UNIVERSITY	RAIT02WT
PEST SIX	CHEVERTON, S.	UNDERGRAD STUD.	UNIV. OF WISCONSIN	RAIT02WT
PEST NWU	MILLER, P.	GRAD. STUDENT	NORTHWESTERN UNIV.	RAIT02WT
PEST NWU	BRODHOLT, J.	GRAD. STUDENT	NORTHWESTERN UNIV.	RAIT02WT
PEVL NWU	HUNT, I.	VOLUNTEER	NORTHWESTERN UNIV.	RAIT02V
PEST NWU	JOHNSON, K.	GRAD. STUDENT	NORTHWESTERN UNIV.	RAIT02W
PEVL NWU	POTENZ, F. S.	VOLUNTEER	NORTHWESTERN UNIV.	RAIT02WT
PEVL NWU	MCCRERY, T.	VOLUNTEER	NORTHWESTERN UNIV.	RAIT02WT

****NOTES****

#AN 'X' IN THE (B)EGIN/(E)ND COLUMN FOLLOWING THE SAMPLE CODE INDICATES NO
 #SAMPLE OR DATA RECOVERED. A 'C' INDICATES CONTINUATION OF DATA COLLECTION
 #FROM BEFORE THE BEGINNING OR AFTER THE END OF A PARTICULAR LEG. (MOORED
 #BOTTOM INSTRUMENTS, FOR EXAMPLE.) THE NUMBER APPEARING IN THE COLUMNS
 #BETWEEN THE SAMPLE IDENTIFIER AND THE DISPOSITION CODE, FOR MANY SAMPLE
 #ENTRIES, IS THE WATER DEPTH IN CORRECTED METERS. POSITIONS ARE IN TENTHS
 #OF MINUTES.

#GMT	DDMMYY	LOC	T	SAMP	SAMPLE	DISP	LAT.	LONG.	CRUISE
#TIME	DATE	TIME	Z	CODE	IDENTIFIER	CODE			LEG-SHIP

****UNDERWAY DATA CURATOR - S. M. SMITH EXT. 42752

****LOG BOOKS****

2251	110288			LBUW	B UNDERWAY WATCH LOG	GDC	16-494N	99-546W	sRAITO2WT
1158	130388			LBUW	E UNDERWAY WATCH LOG	GDC	18-555N	104-249W	sRAITO2WT

**** MAGNETICS (EARTH TOTAL FIELD) ****

2349	110288			MGRA	B MAGNETICS R-01	GDC	16-434N	99-545W	sRAITO2WT
1046	130388			MGRA	E MAGNETICS R-01	GDC	18-463N	104-300W	sRAITO2WT

**** ECHO SOUNDER RECORDS ****

030	110288			MBRM	B SEABEAM MONITOR R-01	GDC	16-474N	99-537W	sRAITO2WT
0116	130288			MBRM	E SEABEAM MONITOR R-01	GDC	11-566N	100-584W	sRAITO2WT
0120	130288			MBRM	B SEABEAM MONITOR R-02	GDC	11-558N	100-586W	sRAITO2WT
1821	160288			MBRM	E SEABEAM MONITOR R-02	GDC	5-367N	103-106W	sRAITO2WT
1830	160288			MBRM	B SEABEAM MONITOR R-03	GDC	5-366N	103-107W	sRAITO2WT
1232	200288			MBRM	E SEABEAM MONITOR R-03	GDC	8-550N	104-330W	sRAITO2WT
1253	200288			MBRM	B SEABEAM MONITOR R-04	GDC	8-557N	104-300W	sRAITO2WT
1710	200288			MBRM	E SEABEAM MONITOR R-04	GDC	8-555N	104-236W	sRAITO2WT
1712	200288			MBRM	B SEABEAM MONITOR R-05	GDC	8-557N	104-234W	sRAITO2WT
0710	240288			MBRM	E SEABEAM MONITOR R-05	GDC	9-169N	104-133W	sRAITO2WT
0720	240288			MBRM	B SEABEAM MONITOR R-06	GDC	9-172N	104-133W	sRAITO2WT
0122	280288			MBRM	E SEABEAM MONITOR R-06	GDC	10-165N	104-375W	sRAITO2WT
0127	280288			MBRM	B SEABEAM MONITOR R-07	GDC	10-160N	104-368W	sRAITO2WT
2320	020388			MBRM	E SEABEAM MONITOR R-07	GDC	11-312N	103-339W	sRAITO2WT
2326	020388			MBRM	B SEABEAM MONITOR R-08	GDC	11-313N	103-339W	sRAITO2WT
2234	060388			MBRM	E SEABEAM MONITOR R-08	GDC	13-016N	102-570W	sRAITO2WT
0042	060388			MBRM	B SEABEAM MONITOR R-09	GDC	13-016N	102-570W	sRAITO2WT
18	100388			MBRM	E SEABEAM MONITOR R-09	GDC	14-369N	104-058W	sRAITO2WT
1824	100388			MBRM	B SEABEAM MONITOR R-10	GDC	14-369N	104-069W	sRAITO2WT
1158	130388			MBRM	E SEABEAM MONITOR R-10	GDC	18-555N	104-249W	sRAITO2WT

#GMT	DDMMYY	LOC T	SAMP	SAMPLE	DISP			CRUISE
#TIME	DATE	TIME Z	CODE	IDENTIFIER	CODE	LAT.	LONG.	LEG-SHIP
*** SEA BEAM SWATH BOOKS ***								
0030	120288		MBSB B	SEABEAM SWATH BK-01	GDC	16-354N	99-560W	sRAIT02WT
1319	120288		MBSB E	SEABEAM SWATH BK-01	GDC	14-142N	100-268W	sRAIT02WT
1319	120288		MBSB B	SEABEAM SWATH BK-02	BKC	14-142N	100-268W	sRAIT02WT
1440	130288		MBSB E	SEABEAM SWATH BK-02	GDC	9-173N	101-334W	sRAIT02WT
1440	130288		MBSB B	SEABEAM SWATH BK-03	GDC	9-173N	101-334W	sRAIT02WT
1540	140288		MBSB E	SEABEAM SWATH BK-03	GDC	5-379N	101-591W	sRAIT02WT
1540	140288		MBSB B	SEABEAM SWATH BK-04	GDC	5-379N	101-591W	sRAIT02WT
2351	150288		MBSB E	SEABEAM SWATH BK-04	GDC	5-373N	103-073W	sRAIT02WT
2351	150288		MBSB B	SEABEAM SWATH BK-05	GDC	5-373N	103-073W	sRAIT02WT
0955	170288		MBSB E	SEABEAM SWATH BK-05	GDC	7-070N	102-575W	sRAIT02WT
0956	170288		MBSB B	SEABEAM SWATH BK-06	GDC	7-072N	102-575W	sRAIT02WT
2150	180288		MBSB E	SEABEAM SWATH BK-06	GDC	8-237N	104-139W	sRAIT02WT
2150	180288		MBSB B	SEABEAM SWATH BK-07	GDC	8-237N	104-139W	sRAIT02WT
0945	200288		MBSB E	SEABEAM SWATH BK-07	GDC	8-548N	104-336W	sRAIT02WT
0945	200288		MBSB B	SEABEAM SWATH BK-08	GDC	8-548N	104-336W	sRAIT02WT
0622	220288		MBSB E	SEABEAM SWATH BK-08	GDC	8-488N	103-541W	sRAIT02WT
0622	220288		MBSB B	SEABEAM SWATH BK-09	GDC	8-488N	103-541W	sRAIT02WT
1504	230288		MBSB E	SEABEAM SWATH BK-09	GDC	9-039N	104-530W	sRAIT02WT
1504	230288		MBSB B	SEABEAM SWATH BK-10	GDC	9-039N	104-530W	sRAIT02WT
0500	250288		MBSB E	SEABEAM SWATH BK-10	GDC	9-262N	104-139W	sRAIT02WT
0500	250288		MBSB B	SEABEAM SWATH BK-11	GDC	9-262N	104-139W	sRAIT02WT
1947	260288		MBSB E	SEABEAM SWATH BK-11	GDC	9-401N	104-154W	sRAIT02WT

#GMT #TIME #	DDMMYY DATE	LOC T TIME Z	SAMP CODE	SAMPLE IDENTIFIER	DISP CODE	LAT.	LONG.	CRUISE LEG-SHIP
1947	260288		MBSB B	SEABEAM SWATH BK-12	GDC	9-401N	104-154W	sRAIT02WT
0051	280288		MBSB E	SEABEAM SWATH BK-12	GDC	10-122N	104-393W	sRAIT02WT
0051	280288		MBSB B	SEABEAM SWATH BK-13	GDC	10-122N	104-393W	sRAIT02WT
1715	290288		MBSB E	SEABEAM SWATH BK-13	GDC	10-178N	103-371W	sRAIT02WT
1715	290288		MBSB B	SEABEAM SWATH BK-14	GDC	10-178N	103-371W	sRAIT02WT
1155	020388		MBSB E	SEABEAM SWATH BK-14	GDC	11-224N	103-293W	sRAIT02WT
1155	020388		MBSB B	SEABEAM SWATH BK-15	GDC	11-224N	103-293W	sRAIT02WT
0331	040388		MBSB E	SEABEAM SWATH BK-15	GDC	11-334N	104-037W	sRAIT02WT
0331	040388		MBSB B	SEABEAM SWATH BK-16	GDC	11-334N	104-037W	sRAIT02WT
1548	050388		MBSB E	SEABEAM SWATH BK-16	GDC	12-202N	103-430W	sRAIT02WT
1548	050388		MBSB B	SEABEAM SWATH BK-17	GDC	12-202N	103-430W	sRAIT02WT
0032	060388		MBSB E	SEABEAM SWATH BK-17	GDC	13-022N	102-571W	sRAIT02WT
2132	060388		MBSB B	SEABEAM SWATH BK-18	GDC	13-022N	102-571W	sRAIT02WT
1316	080388		MBSB E	SEABEAM SWATH BK-18	GDC	14-094N	104-156W	sRAIT02WT
1316	080388		MBSB B	SEABEAM SWATH BK-19	GDC	14-094N	104-156W	sRAIT02WT
0753	100388		MBSB E	SEABEAM SWATH BK-19	GDC	14-273N	104-020W	sRAIT02WT
0753	100388		MBSB B	SEABEAM SWATH BK-20	GDC	14-273N	104-020W	sRAIT02WT
0133	120388		MBSB E	SEABEAM SWATH BK-20	GDC	14-304N	104-199W	sRAIT02WT
0133	120388		MBSB B	SEABEAM SWATH BK-21	GDC	14-304N	104-199W	sRAIT02WT
0235	130388		MBSB E	SEABEAM SWATH BK-21	GDC	17-393N	105-061W	sRAIT02WT
0235	130388		MBSB B	SEABEAM SWATH BK-22	GDC	17-393N	105-061W	sRAIT02WT
1158	130388		MBSB E	SEABEAM SWATH BK-22	GDC	18-555N	104-249W	sRAIT02WT

*** GRAVIMETER - CONTINUOUS RECORD ***

2251	110288		GVSF B	GRAVITY METER	GDC	16-494N	99-546W	sRAIT02WT
1200	130388		GVSF E	GRAVITY METER	GDC	18-558N	104-247W	sRAIT02WT

#GMT	DDMMYY	LOC T	SAMP	SAMPLE	DISP	LAT.	LONG.	CRUISE
#TIME	DATE	TIME Z	CODE	IDENTIFIER	CODE			LEG-SHIP
***** THERMOGRAPH RECORDS *****								
2110	110288		TGRC B	THERMOGRAPHS 1-29	GDC	16-509N	99-541W	sRAITO2WT
1405	130388		TGRC E	THERMOGRAPHS 1-29	GDC	19-042N	104-186W	sRAITO2WT
***** ROCK DREDGES *****								
0632	150288		DRRO B	ROCK DREDGE 01 1938M	GCR	5-466N	102-110W	sRAITO2WT
0748	150288		DRRO E	ROCK DREDGE 01 1834M	GCR	5-467N	102-107W	sRAITO2WT
0959	150288		DRRO B	ROCK DREDGE 02 1777M	GCR	5-467N	102-127W	sRAITO2WT
1209	150288		DRRO B	ROCK DREDGE 03 1788M	GCR	5-465N	102-127W	sRAITO2WT
1302	150288		DRRO E	ROCK DREDGE 03 1770M	GCR	5-469N	102-128W	sRAITO2WT
0825	160288		DRRO B	ROCK DREDGE 04 2320M	GCR	5-360N	103-011W	sRAITO2WT
0923	160288		DRRO E	ROCK DREDGE 04 2263M	GCR	5-361N	103-010W	sRAITO2W
1244	160288		DRRO B	ROCK DREDGE 05 2720M	GCR	5-325N	103-040W	sRAITO2WT
1449	160288		DRRO E	ROCK DREDGE 05 2700M	GCR	5-331N	103-037W	sRAITO2WT
1923	160288		DRRO B	ROCK DREDGE 06 2360M	GCR	5-363N	103-110W	sRAITO2WT
2350	160288		DRRO E	ROCK DREDGE 06 2360M	GCR	5-310N	102-504W	sRAITO2WT
2337	170288		DRRO B	ROCK DREDGE 07 2087M	GCR	8-087N	103-107W	sRAITO2WT
0012	180288		DRRO E	ROCK DREDGE 07 2020M	GCR	8-085N	103-114W	sRAITO2WT
0442	180288		DRRO B	ROCK DREDGE 08 3857M	GCR	8-212N	103-014W	sRAITO2WT
0742	180288		DRRO E	ROCK DREDGE 08 3180M	GCR	8-202N	103-036W	sRAITO2WT
1219	180288		DRRO B	ROCK DREDGE 09 3130M	GCR	8-235N	103-315W	sRAITO2WT
1328	180288		DRRO E	ROCK DREDGE 09 M	GCR	8-234N	103-311W	sRAITO2WT
1906	180288		DRRO B	ROCK DREDGE 10 2830M	GCR	8-209N	104-063W	sRAITO2WT
2000	180288		DRRO E	ROCK DREDGE 10 2741M	GCR	8-211N	104-065W	sRAITO2WT
1432	190288		DRRO X	ROCK DREDGE 11 2110M	GCR	8-236N	104-405W	sRAITO2WT

#GMT #TIME #	DDMMYY DATE	LOC TIME	T Z	SAMP CODE	SAMPLE IDENTIFIER	DISP CODE	LAT.	LONG.	CRUISE LEG-SHIP
1720	190288			DRRO B	ROCK DREDGE 12 2865M	GCR	8-218N	104-383W	sRAIT02WT
1807	190288			DRRO E	ROCK DREDGE 12 3020M	GCR	8-220N	104-391W	sRAIT02WT
2033	190288			DRRO B	ROCK DREDGE 13 2180M	GCR	8-241N	104-413W	sRAIT02WT
2101	190288			DRRO E	ROCK DREDGE 13 2140M	GCR	8-237N	104-412W	sRAIT02WT
0156	200288			DRRO B	ROCK DREDGE 14 1560M	GCR	8-458N	104-321W	sRAIT02WT
0230	200288			DRRO E	ROCK DREDGE 14 1690M	GCR	8-454N	104-322W	sRAIT02WT
0400	200288			DRRO B	ROCK DREDGE 15 1682M	GCR	8-461N	104-317W	sRAIT02WT
0433	200288			DRRO E	ROCK DREDGE 15 M	GCR	8-457N	104-320W	sRAIT02WT
0709	200288			DRRO B	ROCK DREDGE 16 2985M	GCR	8-506N	104-336W	sRAIT02WT
0800	200288			DRRO E	ROCK DREDGE 16 M	GCR	8-503N	104-340W	sRAIT02WT
1048	200288			DRRO B	ROCK DREDGE 17 2720M	GCR	8-547N	104-339W	sRAIT02WT
25	200288			DRRO E	ROCK DREDGE 17 2715M	GCR	8-544N	104-340W	sRAIT02WT
1425	200288			DRRO B	ROCK DREDGE 18 2720M	GCR	8-561N	104-274W	sRAIT02WT
1520	200288			DRRO E	ROCK DREDGE 18 M	GCR	8-557N	104-277W	sRAIT02WT
1828	200288			DRRO B	ROCK DREDGE 19 2375M	GCR	8-560N	104-243W	sRAIT02WT
1924	200288			DRRO E	ROCK DREDGE 19 2267M	GCR	8-562N	104-247W	sRAIT02WT
2213	200288			DRRO B	ROCK DREDGE 20 2985M	GCR	8-597N	104-224W	sRAIT02WT
2318	200288			DRRO E	ROCK DREDGE 20 2837M	GCR	9-000N	104-219W	sRAIT02WT
0314	210288			DRRO B	ROCK DREDGE 21 2711M	GCR	8-538N	104-086W	sRAIT02WT
0407	210288			DRRO E	ROCK DREDGE 21 2657M	GCR	8-534N	104-085W	sRAIT02WT
0721	210288			DRRO B	ROCK DREDGE 22 2761M	GCR	8-538N	104-061W	sRAIT02WT
0816	210288			DRRO E	ROCK DREDGE 22 2749M	GCR	8-542N	104-057W	sRAIT02WT
1110	210288			DRRO B	ROCK DREDGE 23 3025M	GCR	9-021N	104-027W	sRAIT02WT
1212	210288			DRRO E	ROCK DREDGE 23 M	GCR	9-020N	104-027W	sRAIT02WT

#GMT #TIME #	DDMMYY DATE	LOC T TIME Z	SAMP CODE	SAMPLE IDENTIFIER	DISP CODE	LAT.	LONG.	CRUISE LEG-SHIP
1552	210288		DRRO B	ROCK DREDGE 24 3140M	GCR	8-578N	103-525W	sRAIT02WT
1623	210288		DRRO E	ROCK DREDGE 24 3054M	GCR	8-579N	103-522W	sRAIT02WT
2047	210288		DRRO B	ROCK DREDGE 25 2220M	GCR	8-529N	103-473W	sRAIT02WT
2142	210288		DRRO E	ROCK DREDGE 25 1980M	GCR	8-530N	103-473W	sRAIT02WT
0026	220288		DRRO B	ROCK DREDGE 26 2105M	GCR	8-520N	103-512W	sRAIT02WT
0129	220288		DRRO E	ROCK DREDGE 26 M	GCR	8-526N	103-515W	sRAIT02WT
0354	220288		DRRO B	ROCK DREDGE 27 2051M	GCR	8-524N	103-463W	sRAIT02WT
0428	220288		DRRO X	ROCK DREDGE 27 1960M	GCR	8-519N	103-464W	sRAIT02WT
0658	220288		DRRO B	ROCK DREDGE 28 2076M	GCR	8-487N	103-541W	sRAIT02WT
0935	220288		DRRO E	ROCK DREDGE 28 1984M	GCR	8-487N	103-540W	sRAIT02WT
1603	220288		DRRO B	ROCK DREDGE 29 2726M	GCR	8-412N	104-043W	sRAIT02WT
1635	220288		DRRO E	ROCK DREDGE 29 M	GCR	8-418N	104-047W	sRAIT02WT
0556	230288		DRRO B	ROCK DREDGE 30 1863M	GCR	9-101N	105-357W	sRAIT02WT
0637	230288		DRRO E	ROCK DREDGE 30 M	GCR	9-107N	105-362W	sRAIT02WT
1225	230288		DRRO B	ROCK DREDGE 31 2454M	GCR	9-052N	105-012W	sRAIT02WT
1302	230288		DRRO E	ROCK DREDGE 31 2366M	GCR	9-053N	105-011W	sRAIT02WT
1642	230288		DRRO B	ROCK DREDGE 32 3025M	GCR	9-045N	104-544W	sRAIT02WT
1732	230288		DRRO E	ROCK DREDGE 32 M	GCR	9-051N	104-554W	sRAIT02WT
2212	230288		DRRO B	ROCK DREDGE 33 2880M	GCR	8-565N	104-482W	sRAIT02WT
2255	230288		DRRO E	ROCK DREDGE 33 2810M	GCR	8-560N	104-489W	sRAIT02WT
0614	240288		DRRO B	ROCK DREDGE 34 2611M	GCR	9-167N	104-134W	sRAIT02WT
0653	240288		DRRO E	ROCK DREDGE 34 M	GCR	9-168N	104-133W	sRAIT02WT
0855	240288		DRRO B	ROCK DREDGE 35 2511M	GCR	9-187N	104-132W	sRAIT02WT
0911	240288		DRRO E	ROCK DREDGE 35 2593M	GCR	9-193N	104-134W	sRAIT02WT
1057	240288		DRRO B	ROCK DREDGE 36 2594M	GCR	9-198N	104-131W	sRAIT02WT
1131	240288		DRRO E	ROCK DREDGE 36 2595M	GCR	9-197N	104-134W	sRAIT02WT

#GMT #TIME #	DDMMYY DATE	LOC TIME	T Z	SAMP CODE	SAMPLE IDENTIFIER	DISP CODE	LAT.	LONG.	CRUISE LEG-SHIP
1313	240288			DRRO B	ROCK DREDGE 37	2600M	GCR	9-200N	104-129W sRAIT02WT
1350	240288			DRRO E	ROCK DREDGE 37	M	GCR	9-202N	104-127W sRAIT02WT
1543	240288			DRRO B	ROCK DREDGE 38	2597M	GCR	9-203N	104-132W sRAIT02WT
1620	240288			DRRO E	ROCK DREDGE 38	M	GCR	9-205N	104-132W sRAIT02WT
1835	240288			DRRO B	ROCK DREDGE 39	2586M	GCR	9-211N	104-130W sRAIT02WT
1925	240288			DRRO E	ROCK DREDGE 39	2589M	GCR	9-212N	104-128W sRAIT02WT
2130	240288			DRRO B	ROCK DREDGE 40	2590M	GCR	9-222N	104-126W sRAIT02WT
2205	240288			DRRO E	ROCK DREDGE 40	M	GCR	9-222N	104-126W sRAIT02WT
0000	250288			DRRO B	ROCK DREDGE 41	2598M	GCR	9-244N	104-129W sRAIT02WT
0031	250288			DRRO E	ROCK DREDGE 41	M	GCR	9-241N	104-130W sRAIT02WT
0223	250288			DRRO B	ROCK DREDGE 42	2588M	GCR	9-252N	104-132W sRAIT02WT
0313	250288			DRRO E	ROCK DREDGE 42	2584M	GCR	9-256N	104-134W sRAIT02WT
.06	250288			DRRO B	ROCK DREDGE 43	2590M	GCR	9-262N	104-140W sRAIT02WT
0537	250288			DRRO E	ROCK DREDGE 43	2584M	GCR	9-265N	104-146W sRAIT02WT
0731	250288			DRRO B	ROCK DREDGE 44	2583M	GCR	9-280N	104-142W sRAIT02WT
0800	250288			DRRO E	ROCK DREDGE 44	2580M	GCR	9-282N	104-142W sRAIT02WT
0959	250288			DRRO B	ROCK DREDGE 45	2580M	GCR	9-290N	104-143W sRAIT02WT
1022	250288			DRRO E	ROCK DREDGE 45	2582M	GCR	9-292N	104-144W sRAIT02WT
1206	250288			DRRO B	ROCK DREDGE 46	2581M	GCR	9-300N	104-143W sRAIT02WT
1238	250288			DRRO E	ROCK DREDGE 46	2580M	GCR	9-303N	104-143W sRAIT02WT
1433	250288			DRRO B	ROCK DREDGE 47	2577M	GCR	9-307N	104-144W sRAIT02WT
1506	250288			DRRO E	ROCK DREDGE 47	2579M	GCR	9-309N	104-145W sRAIT02WT
1705	250288			DRRO B	ROCK DREDGE 48	2583M	GCR	9-313N	104-144W sRAIT02WT
1741	250288			DRRO E	ROCK DREDGE 48	2573M	GCR	9-316N	104-145W sRAIT02WT
2012	250288			DRRO B	ROCK DREDGE 49	2751M	GCR	9-314N	104-128W sRAIT02WT
2036	250288			DRRO E	ROCK DREDGE 49	2699M	GCR	9-319N	104-131W sRAIT02WT

#GMT #TIME #	DDMMYY DATE	LOC TIME	T Z	SAMP CODE	SAMPLE IDENTIFIER	DISP CODE	LAT.	LONG.	CRUISE LEG-SHIP
2339	250288			DRRO B	ROCK DREDGE 50 2570M	GCR	9-334N	104-142W	sRAIT02WT
0011	260288			DRRO E	ROCK DREDGE 50 2601M	GCR	9-335N	104-142W	sRAIT02WT
0159	260288			DRRO B	ROCK DREDGE 51 2575M	GCR	9-328N	104-146W	sRAIT02WT
0233	260288			DRRO E	ROCK DREDGE 51 2575M	GCR	9-330N	104-147W	sRAIT02WT
0420	260288			DRRO B	ROCK DREDGE 52 2590M	GCR	9-336N	104-148W	sRAIT02WT
0455	260288			DRRO E	ROCK DREDGE 52 2566M	GCR	9-339N	104-150W	sRAIT02WT
0632	260288			DRRO B	ROCK DREDGE 53 2563M	GCR	9-345N	104-147W	sRAIT02WT
0707	260288			DRRO E	ROCK DREDGE 53 2577M	GCR	9-346N	104-147W	sRAIT02WT
0845	260288			DRRO B	ROCK DREDGE 54 2559M	GCR	9-357N	104-150W	sRAIT02WT
0914	260288			DRRO E	ROCK DREDGE 54 2562M	GCR	9-359N	104-150W	sRAIT02WT
1110	260288			DRRO B	ROCK DREDGE 55 2565M	GCR	9-369N	104-153W	sRAIT02WT
1139	260288			DRRO E	ROCK DREDGE 55 2565M	GCR	9-371N	104-153W	sRAIT02WT
1326	260288			DRRO B	ROCK DREDGE 56 2561M	GCR	9-378N	104-151W	sRAIT02W
1351	260288			DRRO E	ROCK DREDGE 56 2558M	GCR	9-381N	104-151W	sRAIT02WT
1546	260288			DRRO B	ROCK DREDGE 57 2555M	GCR	9-380N	104-149W	sRAIT02WT
1623	260288			DRRO E	ROCK DREDGE 57 2554M	GCR	9-379N	104-148W	sRAIT02WT
1839	260288			DRRO B	ROCK DREDGE 58 2552M	GCR	9-398N	104-152W	sRAIT02WT
1916	260288			DRRO E	ROCK DREDGE 58 2550M	GCR	9-400N	104-153W	sRAIT02WT
2139	260288			DRRO B	ROCK DREDGE 59 2552M	GCR	9-404N	104-165W	sRAIT02WT
2217	260288			DRRO E	ROCK DREDGE 59 2552M	GCR	9-407N	104-168W	sRAIT02WT
1620	270288			DRRO B	ROCK DREDGE 60 2730M	GCR	10-000N	104-545W	sRAIT02WT
1722	270288			DRRO E	ROCK DREDGE 60 2640M	GCR	10-001N	104-548W	sRAIT02WT
2009	270288			DRRO B	ROCK DREDGE 61 2370M	GCR	9-599N	104-471W	sRAIT02WT
2055	270288			DRRO E	ROCK DREDGE 61 2364M	GCR	10-003N	104-473W	sRAIT02WT

#GMT #TIME #	DDMMYY DATE	LOC TIME	T Z	SAMP CODE	SAMPLE IDENTIFIER	DISP CODE	LAT.	LONG.	CRUISE LEG-SHIP
0527	280288			DRRO B	ROCK DREDGE 62 2440M	GCR	10-012N	104-116W	sRAIT02WT
0627	280288			DRRO E	ROCK DREDGE 62 2320M	GCR	10-015N	104-113W	sRAIT02WT
1522	280288			DRRO B	ROCK DREDGE 63 2380M	GCR	10-052N	103-276W	sRAIT02WT
1611	280288			DRRO E	ROCK DREDGE 63 2410M	GCR	10-058N	103-278W	sRAIT02WT
1844	280288			DRRO B	ROCK DREDGE 64 3029M	GCR	10-019N	103-343W	sRAIT02WT
1914	280288			DRRO E	ROCK DREDGE 64 3003M	GCR	10-017N	103-340W	sRAIT02WT
2240	280288			DRRO B	ROCK DREDGE 65 2180M	GCR	10-072N	103-246W	sRAIT02WT
2344	280288			DRRO E	ROCK DREDGE 65 2074M	GCR	10-078N	103-244W	sRAIT02WT
0203	290288			DRRO B	ROCK DREDGE 66 2620M	GCR	10-077N	103-200W	sRAIT02WT
0258	290288			DRRO E	ROCK DREDGE 66 2600M	GCR	10-084N	103-204W	sRAIT02WT
0509	290288			DRRO B	ROCK DREDGE 67 2644M	GCR	10-087N	103-178W	sRAIT02WT
0504	290288			DRRO E	ROCK DREDGE 67 2580M	GCR	10-079N	103-181W	sRAIT02WT
0917	290288			DRRO B	ROCK DREDGE 68 3220M	GCR	10-114N	103-247W	sRAIT02WT
1011	290288			DRRO E	ROCK DREDGE 68 3177M	GCR	10-122N	103-252W	sRAIT02WT
1409	290288			DRRO B	ROCK DREDGE 69 3000M	GCR	10-202N	103-383W	sRAIT02WT
1436	290288			DRRO E	ROCK DREDGE 69 2985M	GCR	10-196N	103-382W	sRAIT02WT
1705	290288			DRRO B	ROCK DREDGE 70 2964M	GCR	10-178N	103-371W	sRAIT02WT
1747	290288			DRRO E	ROCK DREDGE 70 2964M	GCR	10-175N	103-375W	sRAIT02WT
2103	290288			DRRO B	ROCK DREDGE 71 3368M	GCR	10-157N	103-440W	sRAIT02WT
2147	290288			DRRO E	ROCK DREDGE 71 3380M	GCR	10-158N	103-441W	sRAIT02WT
0138	010388			DRRO B	ROCK DREDGE 72 2834M	GCR	10-223N	103-556W	sRAIT02WT
0213	010388			DRRO E	ROCK DREDGE 72 2748M	GCR	10-227N	103-557W	sRAIT02WT
0409	010388			DRRO B	ROCK DREDGE 73 2547M	GCR	10-229N	103-554W	sRAIT02WT
0509	010388			DRRO E	ROCK DREDGE 73 M	GCR	10-226N	103-554W	sRAIT02WT

#GMT #TIME #	DDMMYY DATE	LOC T TIME Z	SAMP CODE	SAMPLE IDENTIFIER	DISP CODE	LAT.	LONG.	CRUISE LEG-SHIP
0858	010388		DRRO B	ROCK DREDGE 74 2500M	GCR	10-366N	103-508W	sRAIT02WT
0945	010388		DRRO E	ROCK DREDGE 74 2320M	GCR	10-371N	103-506W	sRAIT02WT
1235	010388		DRRO B	ROCK DREDGE 75 3115M	GCR	10-419N	103-523W	sRAIT02WT
1312	010388		DRRO E	ROCK DREDGE 75 M	GCR	10-414N	103-519W	sRAIT02WT
1929	010388		DRRO B	ROCK DREDGE 76 2413M	GCR	10-378N	103-144W	sRAIT02WT
2024	010388		DRRO E	ROCK DREDGE 76 2344M	GCR	10-388N	103-143W	sRAIT02WT
2300	010388		DRRO B	ROCK DREDGE 77 3051M	GCR	10-362N	103-143W	sRAIT02WT
0151	020388		DRRO E	ROCK DREDGE 77 3030M	GCR	10-359N	103-151W	sRAIT02WT
0830	020388		DRRO B	ROCK DREDGE 78 2700M	GCR	11-130N	103-354W	sRAIT02WT
0959	020388		DRRO E	ROCK DREDGE 78 2450M	GCR	11-130N	103-350W	sRAIT02WT
1523	020388		DRRO B	ROCK DREDGE 79 1600M	GCR	11-478N	103-146W	sRAIT02WT
1603	020388		DRRO E	ROCK DREDGE 79 1620M	GCR	11-474N	103-147W	sRAIT02WT
1810	020388		DRRO B	ROCK DREDGE 80 1670M	GCR	11-483N	103-151W	sRAIT02WT
1846	020388		DRRO E	ROCK DREDGE 80 1619M	GCR	11-481N	103-151W	sRAIT02WT
2350	020388		DRRO B	ROCK DREDGE 81 2174M	GCR	11-315N	103-337W	sRAIT02WT
0027	030388		DRRO E	ROCK DREDGE 81 M	GCR	11-319N	103-335W	sRAIT02WT
0259	030388		DRRO B	ROCK DREDGE 82 2632M	GCR	11-303N	103-362W	sRAIT02WT
0400	030388		DRRO E	ROCK DREDGE 82 2660M	GCR	11-306N	103-363W	sRAIT02WT
0835	030388		DRRO B	ROCK DREDGE 83 2905M	GCR	11-143N	103-356W	sRAIT02WT
1005	030388		DRRO E	ROCK DREDGE 83 2900M	GCR	11-141N	103-356W	sRAIT02WT
1426	030388		DRRO B	ROCK DREDGE 84 2385M	GCR	11-288N	103-522W	sRAIT02WT
1507	030388		DRRO E	ROCK DREDGE 84 2244M	GCR	11-289N	103-522W	sRAIT02WT
1814	030388		DRRO B	ROCK DREDGE 85 2459M	GCR	11-306N	104-000W	sRAIT02WT
1848	030388		DRRO E	ROCK DREDGE 85 2424M	GCR	11-303N	104-002W	sRAIT02WT

#GMT #TIME #	DDMMYY DATE	LOC T TIME Z	SAMP CODE	SAMPLE IDENTIFIER	DISP CODE	LAT.	LONG.	CRUISE LEG-SHIP
2135	030388		DRRO B	ROCK DREDGE 86	2559M	GCR 11-300N	103-586W	sRAIT02WT
2216	030388		DRRO E	ROCK DREDGE 86	2509M	GCR 11-303N	103-591W	sRAIT02WT
0152	040388		DRRO B	ROCK DREDGE 87	2600M	GCR 11-338N	104-038W	sRAIT02WT
0238	040388		DRRO E	ROCK DREDGE 87	2570M	GCR 11-336N	104-039W	sRAIT02WT
0427	040388		DRRO B	ROCK DREDGE 88	2560M	GCR 11-335N	104-041W	sRAIT02WT
0523	040388		DRRO E	ROCK DREDGE 88	2520M	GCR 11-330N	104-039W	sRAIT02WT
1252	040388		DRRO B	ROCK DREDGE 89	2490M	GCR 11-314N	103-528W	sRAIT02WT
1344	040388		DRRO E	ROCK DREDGE 89	2455M	GCR 11-311N	103-526W	sRAIT02WT
1833	040388		DRRO B	ROCK DREDGE 90	2599M	GCR 11-334N	104-117W	sRAIT02WT
1904	040388		DRRO E	ROCK DREDGE 90	2614M	GCR 11-332N	104-121W	sRAIT02WT
0011	050388		DRRO B	ROCK DREDGE 91	2620M	GCR 11-472N	103-511W	sRAIT02WT
0107	050388		DRRO E	ROCK DREDGE 91	2630M	GCR 11-477N	103-510W	sRAIT02WT
0004	050388		DRRO B	ROCK DREDGE 92	2904M	GCR 11-562N	103-534W	sRAIT02WT
0543	050388		DRRO E	ROCK DREDGE 92	2844M	GCR 11-565N	103-533W	sRAIT02WT
1202	050388		DRRO B	ROCK DREDGE 93	2680M	GCR 12-174N	103-387W	sRAIT02WT
1232	050388		DRRO E	ROCK DREDGE 93	2721M	GCR 12-174N	103-382W	sRAIT02WT
1526	050388		DRRO B	ROCK DREDGE 94	2725M	GCR 12-204N	103-429W	sRAIT02WT
1618	050388		DRRO E	ROCK DREDGE 94	2694M	GCR 12-200N	103-432W	sRAIT02WT
0048	060388		DRRO B	ROCK DREDGE 95	2067M	GCR 13-036N	103-284W	sRAIT02WT
0138	060388		DRRO E	ROCK DREDGE 95	2092M	GCR 13-034N	103-287W	sRAIT02WT
1436	060388		DRRO B	ROCK DREDGE 96	2530M	GCR 13-044N	103-272W	sRAIT02WT
1457	060388		DRRO E	ROCK DREDGE 96	2577M	GCR 13-043N	103-271W	sRAIT02WT
1751	060388		DRRO B	ROCK DREDGE 97	2360M	GCR 13-026N	103-192W	sRAIT02WT
1816	060388		DRRO E	ROCK DREDGE 97	2215M	GCR 13-024N	103-189W	sRAIT02WT
2157	060388		DRRO B	ROCK DREDGE 98	1490M	GCR 13-022N	102-569W	sRAIT02WT
2231	060388		DRRO E	ROCK DREDGE 98	1417M	GCR 13-017N	102-570W	sRAIT02WT
0054	070388		DRRO B	ROCK DREDGE 99	2010M	GCR 13-064N	102-494W	sRAIT02WT
0158	070388		DRRO E	ROCK DREDGE 99	1942M	GCR 13-058N	102-498W	sRAIT02WT

#GMT #TIME #	DDMMYY DATE	LOC TIME	T Z	SAMP CODE	SAMPLE IDENTIFIER	DISP CODE	LAT.	LONG.	CRUISE LEG-SHIP
0356	070388			DRRO B	ROCK DRDGE 100 1828M	GCR	13-078N	102-459W	sRAITO2WT
0442	070388			DRRO E	ROCK DRDGE 100 1816M	GCR	13-081N	102-459W	sRAITO2WT
0653	070388			DRRO B	ROCK DRDGE 101 2547M	GCR	13-115N	102-423W	sRAITO2WT
0745	070388			DRRO E	ROCK DRDGE 101 2565M	GCR	13-114N	102-420W	sRAITO2WT
0943	070388			DRRO B	ROCK DRDGE 102 2350M	GCR	13-127N	102-405W	sRAITO2WT
1026	070388			DRRO E	ROCK DRDGE 102 M	GCR	13-130N	102-409W	sRAITO2WT
2013	070388			DRRO B	ROCK DRDGE 103 2939M	GCR	13-501N	103-483W	sRAITO2WT
2110	070388			DRRO E	ROCK DRDGE 103 2870M	GCR	13-502N	103-478W	sRAITO2WT
2318	070388			DRRO B	ROCK DRDGE 104 1839M	GCR	13-541N	103-456W	sRAITO2WT
2357	070388			DRRO E	ROCK DRDGE 104 1851M	GCR	13-537N	103-452W	sRAITO2WT
0513	080388			DRRO B	ROCK DRDGE 105 2685M	GCR	14-075N	103-489W	sRAITO2WT
0624	080388			DRRO E	ROCK DRDGE 105 2679M	GCR	14-077N	103-491W	sRAITO2WT
0835	080388			DRRO B	ROCK DRDGE 106 2871M	GCR	14-065N	103-512W	sRAITO2WT
0920	080388			DRRO E	ROCK DRDGE 106 2746M	GCR	14-069N	103-511W	sRAITO2WT
1704	080388			DRRO B	ROCK DRDGE 107 2284M	GCR	14-105N	104-262W	sRAITO2WT
1801	080388			DRRO E	ROCK DRDGE 107 2169M	GCR	14-098N	104-269W	sRAITO2WT
2012	080388			DRRO B	ROCK DRDGE 108 2619M	GCR	14-096N	104-221W	sRAITO2WT
2038	080388			DRRO E	ROCK DRDGE 108 2630M	GCR	14-094N	104-219W	sRAITO2WT
2303	080388			DRRO B	ROCK DRDGE 109 2570M	GCR	14-082N	104-182W	sRAITO2WT
2353	080388			DRRO E	ROCK DRDGE 109 2610M	GCR	14-092N	104-181W	sRAITO2WT
0241	090388			DRRO B	ROCK DRDGE 110 2840M	GCR	14-089N	104-210W	sRAITO2WT
0328	090388			DRRO E	ROCK DRDGE 110 2760M	GCR	14-085N	104-214W	sRAITO2WT
0532	090388			DRRO B	ROCK DRDGE 111 2740M	GCR	14-097N	104-205W	sRAITO2WT
0633	090388			DRRO E	ROCK DRDGE 111 2640M	GCR	14-097N	104-207W	sRAITO2WT
0952	090388			DRRO B	ROCK DRDGE 112 2800M	GCR	14-090N	104-211W	sRAITO2WT
1043	090388			DRRO E	ROCK DRDGE 112 2762M	GCR	14-087N	104-214W	sRAITO2WT
1554	090388			DRRO B	ROCK DRDGE 113 2412M	GCR	14-103N	104-368W	sRAITO2WT
1626	090388			DRRO E	ROCK DRDGE 113 2415M	GCR	14-105N	104-368W	sRAITO2WT

MT	DDMMYY	LOC	T	SAMP	SAMPLE	DISP	LAT.	LONG.	CRUISE
IME	DATE	TIME	Z	CODE	IDENTIFIER	CODE			LEG-SHIP
55	090388			DRRO B	ROCK DRDGE 114 2771M	GCR	14-183N	104-154W	sRAITO2WT
29	090388			DRRO E	ROCK DRDGE 114 2780M	GCR	14-184N	104-153W	sRAITO2WT
23	100388			DRRO B	ROCK DRDGE 115 2910M	GCR	14-253N	104-169W	sRAITO2WT
03	100388			DRRO E	ROCK DRDGE 115 2940M	GCR	14-257N	104-169W	sRAITO2WT
37	100388			DRRO B	ROCK DRDGE 116 3008M	GCR	14-272N	104-017W	sRAITO2WT
35	100388			DRRO E	ROCK DRDGE 116 2876M	GCR	14-273N	104-020W	sRAITO2WT
30	100388			DRRO B	ROCK DRDGE 117 2380M	GCR	14-379N	103-536W	sRAITO2WT
01	100388			DRRO E	ROCK DRDGE 117 2300M	GCR	14-380N	103-537W	sRAITO2WT
53	100388			DRRO B	ROCK DRDGE 118 2594M	GCR	14-405N	103-475W	sRAITO2WT
32	100388			DRRO E	ROCK DRDGE 118 2594M	GCR	14-405N	103-479W	sRAITO2WT
03	100388			DRRO B	ROCK DRDGE 119 2657M	GCR	14-372N	104-120W	sRAITO2WT
58	100388			DRRO E	ROCK DRDGE 119 2680M	GCR	14-371N	104-117W	sRAITO2WT
07	110388			DRRO B	ROCK DRDGE 120 2797M	GCR	14-354N	104-195W	sRAITO2WT
37	110388			DRRO E	ROCK DRDGE 120 2795M	GCR	14-357N	104-195W	sRAITO2WT
59	110388			DRRO B	ROCK DRDGE 121 2995M	GCR	14-343N	104-311W	sRAITO2WT
45	110388			DRRO E	ROCK DRDGE 121 2879M	GCR	14-340N	104-313W	sRAITO2WT
33	110388			DRRO B	ROCK DRDGE 122 2850M	GCR	14-421N	104-198W	sRAITO2WT
11	110388			DRRO E	ROCK DRDGE 122 2832M	GCR	14-424N	104-198W	sRAITO2WT
49	110388			DRRO B	ROCK DRDGE 123 2584M	GCR	14-478N	104-304W	sRAITO2WT
24	110388			DRRO E	ROCK DRDGE 123 2580M	GCR	14-480N	104-308W	sRAITO2WT
23	110388			DRRO B	ROCK DRDGE 124 2930M	GCR	14-492N	104-236W	sRAITO2WT
13	110388			DRRO E	ROCK DRDGE 124 2964M	GCR	14-495N	104-239W	sRAITO2WT

*** BIOLOGY SAMPLE FROM ROCK DREDGES ***

000	160288			BLXX B	BIOLOGY SAMPLES FROM	MVC	5-365N	103-055W	sRAITO2WT
000	100388			BLXX E	ROCK DREDGES (15)	MVC	14-261N	104-190W	sRAITO2WT

#GMT	DDMMYY	LOC	T	SAMP	SAMPLE	DISP	LAT.	LONG.	CRUISE
#TIME	DATE	TIME	Z	CODE	IDENTIFIER	CODE			LEG-SHIP

*** EXPENDABLE BATHYTHERMOGRAPHS ***

1419	120288			BTXP	xbt 0001 Probe T-4	GDC	14-037N	100-291W	sRAITO2WT
1955	120288			BTXP	xbt 0002 Probe T-4	GDC	13-014N	100-441W	sRAITO2WT
0243	130288			BTXP	xbt 0003 Probe T-4	GDC	11-386N	101-019W	sRAITO2WT
1515	130288			BTXP	xbt 0004 Probe T-4	GDC	9-104N	101-345W	sRAITO2WT
2045	130288			BTXP	xbt 0005 Probe T-4	GDC	8-062N	101-449W	sRAITO2WT
0324	140288			BTXP	xbt 0006 Probe T-4	GDC	6-504N	102-006W	sRAITO2WT
1436	140288			BTXP	xbt 0007 Probe T-4	GDC	5-360N	101-593W	sRAITO2WT
2117	140288			BTXP	xbt 0008 Probe T-4	GDC	5-439N	102-112W	sRAITO2WT
1323	150288			BTXP	xbt 0009 Probe T-4	GDC	5-467N	102-128W	sRAITO2WT
0145	160288			BTXP	xbt 0010 Probe T-4	GDC	5-372N	102-581W	sRAITO2WT
1359	170288			BTXP	xbt 0011 Probe T-4	GDC	7-532N	103-042W	sRAITO2WT
2142	170288			BTXP	xbt 0012 Probe T-4	GDC	8-049N	103-127W	sRAITO2WT
1506	180288			BTXP	xbt 0013 Probe T-4	GDC	8-230N	103-345W	sRAITO2WT
0337	190288			BTXP	xbt 0014 Probe T-4	GDC	8-213N	104-270W	sRAITO2
1833	190288			BTXP	xbt 0015 Probe T-4	GDC	8-223N	104-393W	sRAITO2W.
1608	200288			BTXP	xbt 0016 Probe T-4	GDC	8-560N	104-275W	sRAITO2WT
0637	210288			BTXP	xbt 0017 Probe T-4	GDC	8-540N	104-060W	sRAITO2WT
0331	220288			BTXP	xbt 0018 Probe T-4	GDC	8-524N	103-463W	sRAITO2WT
2008	220288			BTXP	xbt 0019 Probe T-4	GDC	8-510N	104-329W	sRAITO2WT
0534	230288			BTXP	xbt 0020 Probe T-4	GDC	9-100N	105-359W	sRAITO2WT
1812	230288			BTXP	xbt 0021 Probe T-4	GDC	9-059N	104-554W	sRAITO2WT
0701	240288			BTXP	xbt 0022 Probe T-4	GDC	9-167N	104-133W	sRAITO2WT
0048	250288			BTXP	xbt 0023 Probe T-4	GDC	9-241N	104-130W	sRAITO2WT
1632	250288			BTXP	xbt 0024 Probe T-4	GDC	9-313N	104-144W	sRAITO2WT
0418	260288			BTXP	xbt 0025 Probe T-4	GDC	9-336N	104-148W	sRAITO2WT
1803	260288			BTXP	xbt 0026 Probe T-4	GDC	9-397N	104-151W	sRAITO2WT
1546	270288			BTXP	xbt 0027 Probe T-4	GDC	9-598N	104-546W	sRAITO2WT
0455	280288			BTXP	xbt 0028 Probe T-4	GDC	10-012N	104-116W	sRAITO2WT
1827	280288			BTXP	xbt 0029 Probe T-4	GDC	10-020N	103-345W	sRAITO2WT
0434	290288			BTXP	xbt 0030 Probe T-4	GDC	10-083N	103-173W	sRAITO2WT
1632	290288			BTXP	xbt 0031 Probe T-4	GDC	10-177N	103-369W	sRAITO2WT
0528	010388			BTXP	xbt 0032 Probe T-4	GDC	10-225N	103-553W	sRAITO2WT
1652	010388			BTXP	xbt 0033 Probe T-4	GDC	10-384N	103-252W	sRAITO2WT
0227	020388			BTXP	xbt 0034 Probe T-4	GDC	10-359N	103-156W	sRAITO2WT
1658	020388			BTXP	xbt 0035 Probe T-4	GDC	11-476N	103-144W	sRAITO2WT
0407	030388			BTXP	xbt 0036 Probe T-5	GDC	11-307N	103-363W	sRAITO2WT
0423	030388			BTXP	xbt 0037 Probe T-4	GDC	11-308N	103-362W	sRAITO2WT
1910	030388			BTXP	xbt 0038 Probe T-4	GDC	11-304N	104-001W	sRAITO2WT