

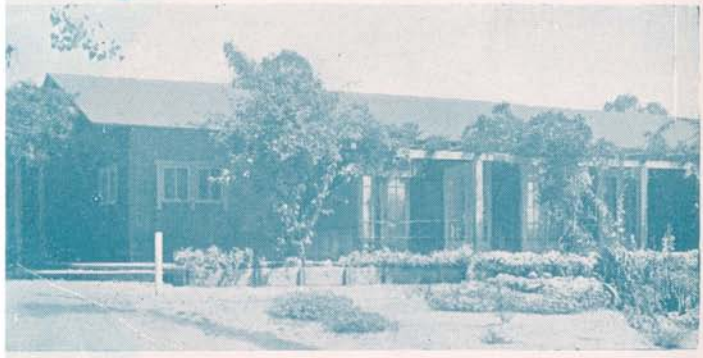


RAMONA

SAN DIEGO COUNTY

*Heart of the
Heaven-on-Earth Country*

CHAMBER of COMMERCE
RAMONA, CALIFORNIA



Visit Ramona

Elevation 1440 Feet



Population 5,000



Rainfall 18 Inches



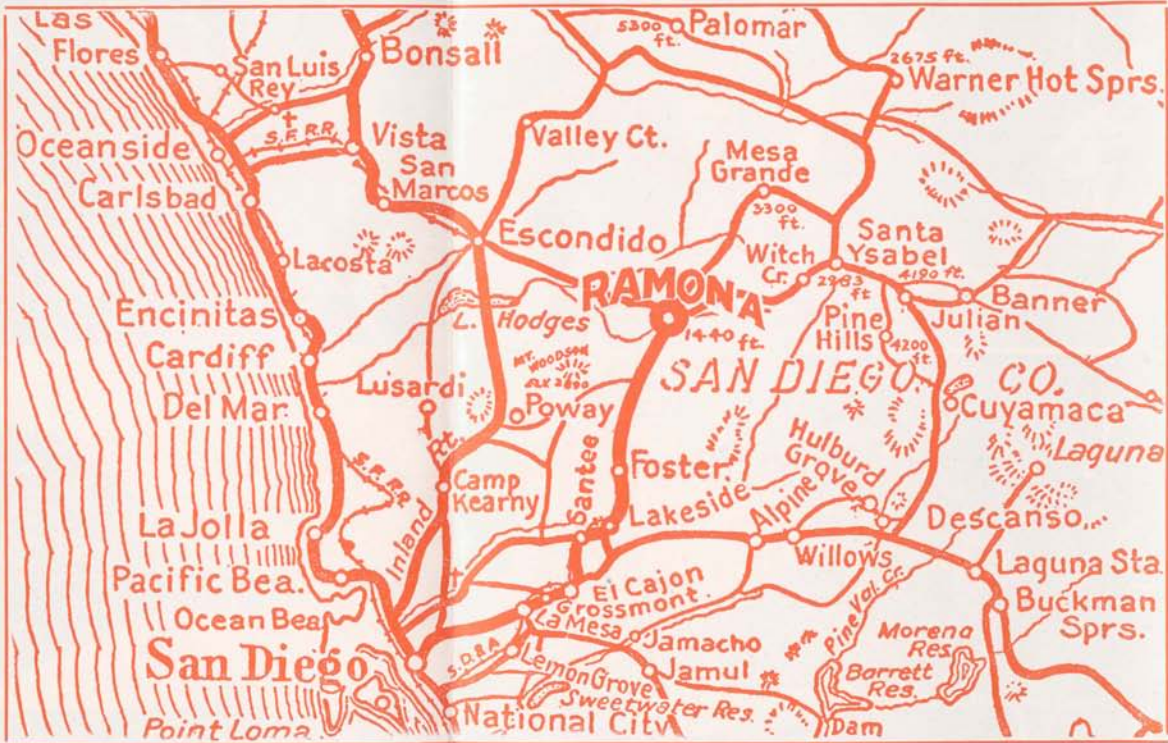
RAMONA UNION HIGH SCHOOL—Upper left. Fully accredited. 8 teachers and Principal. Modern in every respect. Student bus service.

RAMONA UNION Elementary School—Second from top. 10 teachers and Principal. 7½ acres lighted recreation field. New clubhouse under construction.

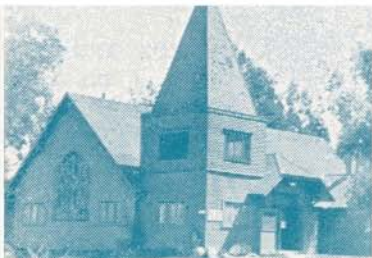
RAMONA WOMAN'S CLUB HOUSE—3rd from top. This club has an enviable record of achievement.

EUCALYPTUS Drive—Ramona's western approach.

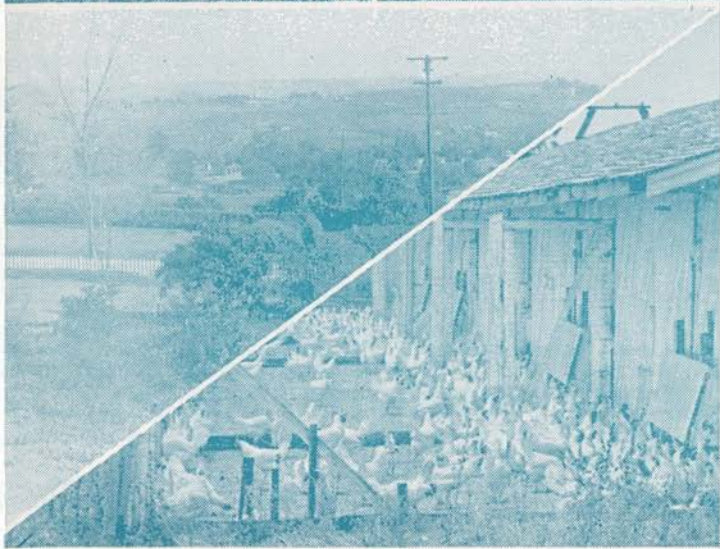
RAMONA CATTLE—In the mountain empire East of Ramona cattle raising prospers.



TRIANGULAR VIEWS (AT RIGHT). VALLEY SCENE AND CHICKEN RANCH. RAMONA HAS TWO EXCLUSIVE CHICKEN HATCHERIES IN OPERATION THE YEAR AROUND. RAMONA'S COMMUNITY LIFE IS CENTERED ABOUT A NUMBER OF REPRESENTATIVE FRATERNAL AND CIVIC CLUBS. CITIZENSHIP STANDARDS ARE TRADITIONALLY HIGH.



UPPER LEFT—Congregational Church; UPPER RIGHT—Friend's Church; CENTER LEFT—Seventh Day Adventist Church; CENTER RIGHT—Full Gospel Mission; OPPOSITE—Temple of the Jewelled Cross, Lemurian Fellowship Catholics, Episcopalians, Christian Science Society also hold regular services. BELOW Left and Right—Attractive Ramona homes.



CITRUS GROVES

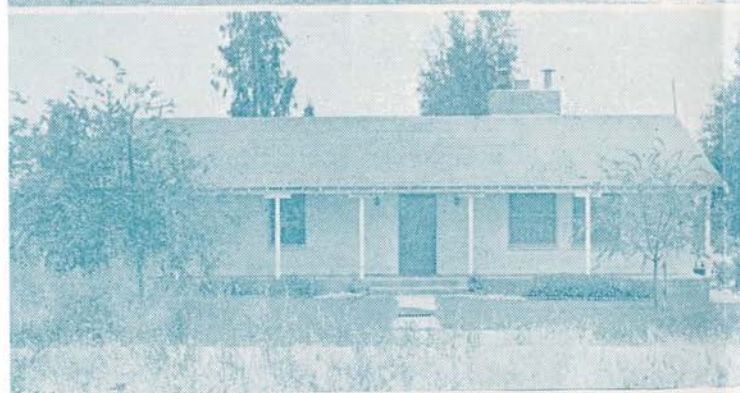
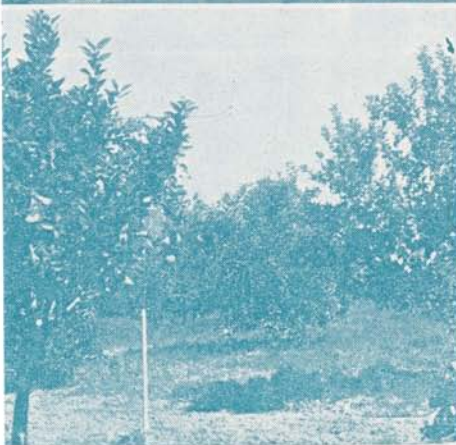
One of the great developments in this fertile valley, has been the planting of Citrus groves.

Smudge pots have never been used in the valley.

AT LEFT—Views of citrus groves. Lemons, oranges, and grapefruit flourish in Ramona's warm sunshine and rich soil.

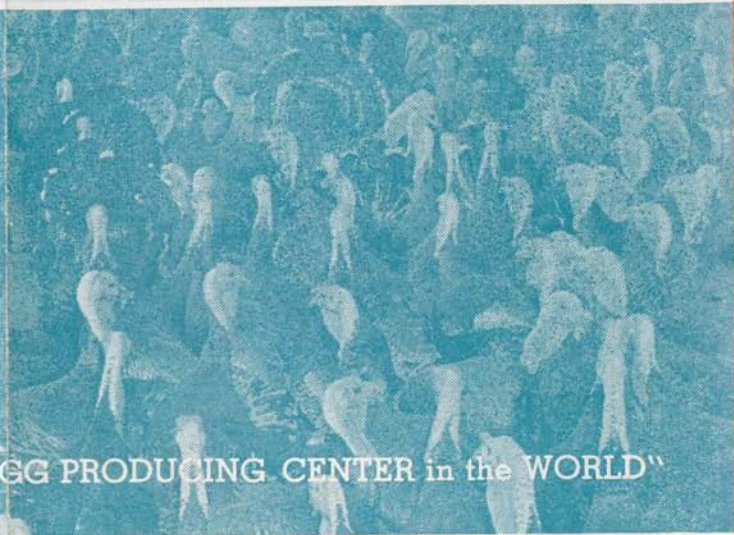
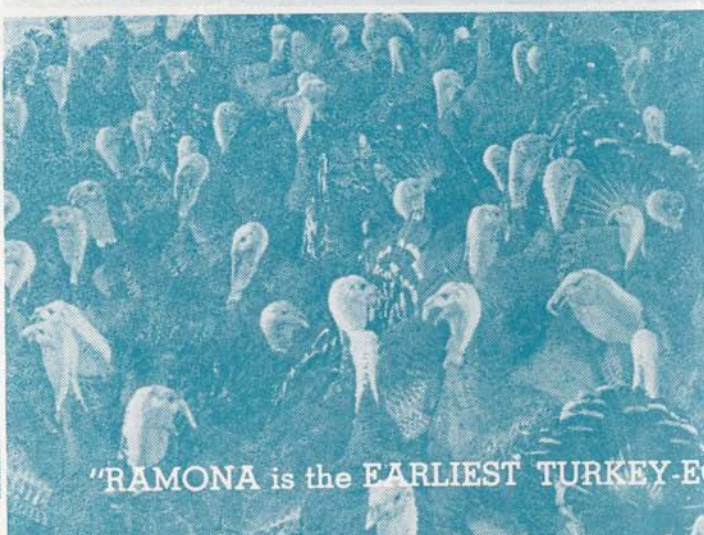
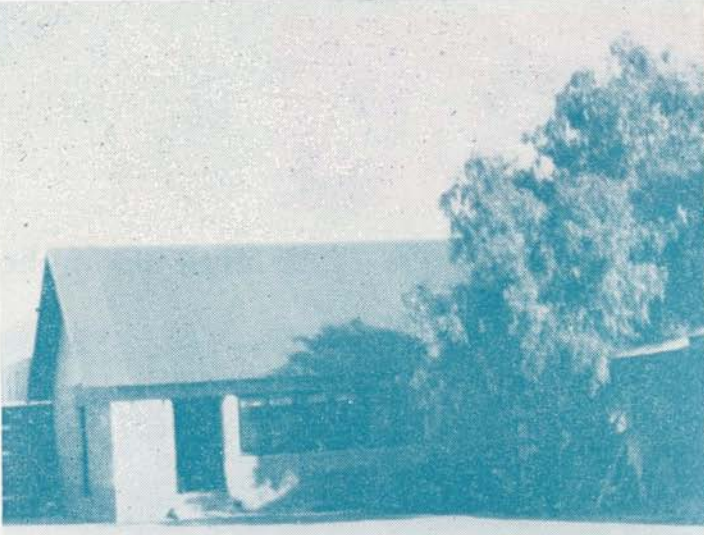
BELOW— Pastoral scene. Dairy farming is carried on extensively in the lush Santa Maria valley surrounding Ramona.

AT BOTTOM—Typical adobe ranch house built from soil taken from the site.

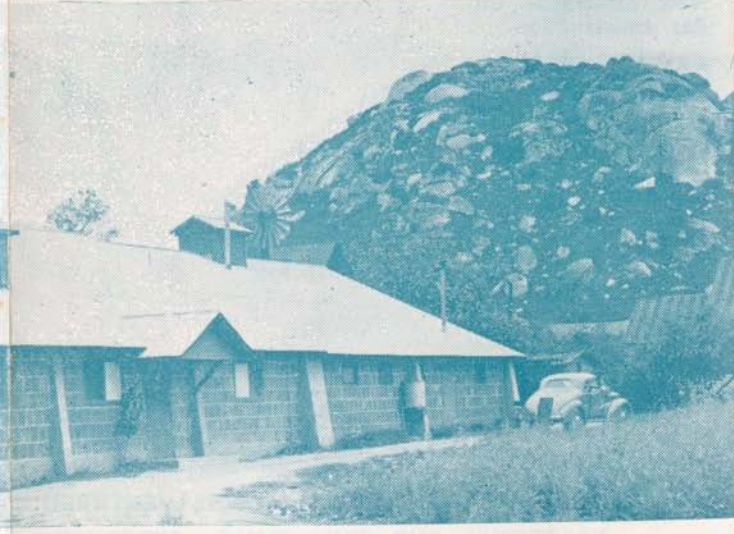


Ramona, Heart of San Diego county, the Heaven on Earth Country, is so happily located as to approach the perfect in climatic conditions. Twenty miles from Ocean or Mountains, it is warmed by the desert in winter and cooled by the ocean in summer! Only 20 miles from the border of Old Mexico, its winters are sunshiny and warm. Because of the clarity of the atmosphere here the Palomar Telescope is located on a mountain top only 40 miles from Ramona.

Midway between mountains and sea, Ramona offers a diversity of recreational advantages. Bathing, Fishing, Hunting, Riding, Skiing, Mountain Climbing.



"RAMONA is the EARLIEST TURKEY EGG PRODUCING CENTER in the WORLD"



AT TOP—Headquarters and Hatchery of the Ramona Turkey Growers Association, a non-profit cooperative of 70 members who sold 1,250,000 turkey hatching eggs last year. AT BOTTOM—Sycamore Fields Hatchery, owned by the Ramona Cooperative Turkey Producers. 250,000 day-old turkeys sold past season. INDEPENDENT turkey distributors also operate in Ramona, including two turkey processing plants, handling over 2,000,000 lbs. of dressed turkey annually.

E106-4814

C.M.X.06