

***Report and Index of
Underway Marine Geophysical Data***

Cook Expedition

Leg 16

(COOK16MV)

R/V Melville

(Issued March 2002)

Ports:

Papeete, Tahiti (9 November 2001)

to

Easter Island, Chile (24 December 2001)

**Chief Scientist: Donald Forsyth
Brown University**

**Computer Tech - John Chatwood
Resident Marine Tech - Bob Wilson**

**Post-Cruise processing and report preparation by
Shipboard Technical Support Group,
Scripps Institution of Oceanography
La Jolla, CA 92093-0223**

NOTE: This is an index of underway geophysical data edited and processed after the completion of the cruise leg and is intended primarily for informal use within the institution. This document is not to be reproduced or distributed outside Scripps without prior approval of the chief scientist or the Shipboard Technical Support Group, Scripps Institution of Oceanography, La Jolla, California 92093-0223.

GDC Cruise ID# 295

***Report and Index of Navigation
and Underway Geophysical Data***

Processed by the Shipboard Technical Support Group
Scripps Institution of Oceanography

Contents:

Index Chart – gives track of cruise leg, dates, ports, and mileage of each type of data collected.

Track Charts– annotated with dates and hour ticks

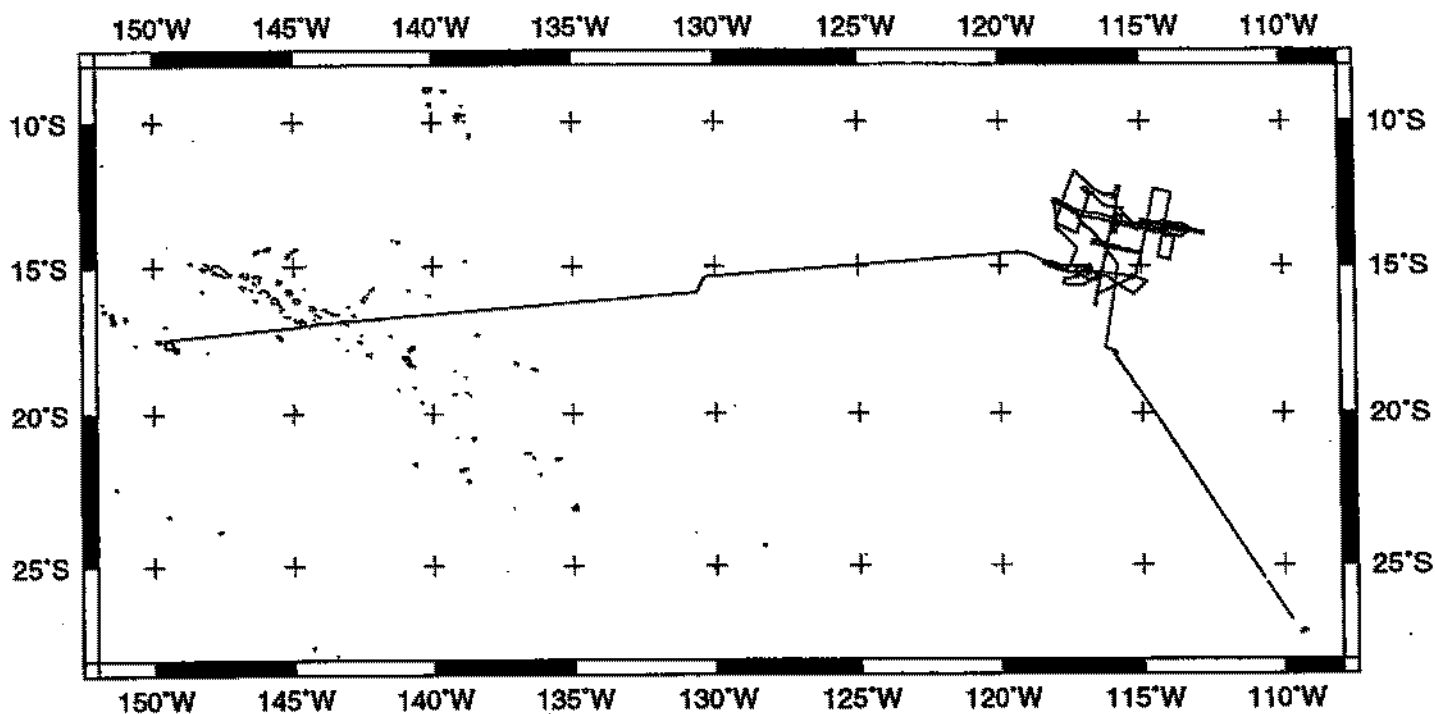
Profiles – depth, magnetic and gravity free air anomaly vs. distance. (Sections of track with seismic reflection data have a wide black line along the bottom of the profile.)

Sample Index – list of begin/end times and positions of all underway records as well as samples and measurements from other disciplines collected on the leg.

NOTE:

For information on the availability of this current digital data as well as archived digital data contact Stephen P. Miller, Geological Data Center, Scripps Institution of Oceanography, La Jolla, California 92093-0220 Phone: (858)534-1898, internet email: spmiller@ucsd.edu; or his Website: <http://SIOExplorer@ucsd.edu>

Rev 6/2001



COOK EXPEDITION LEG 16 (COOK16MV)

CHIEF SCIENTIST: Donald Forsyth, Brown University

PORTS: Papeete, Tahiti - Easter Island, Chile

DATES: 09 November - 24 December 2001

SHIP: R/V Melville

TOTAL MILEAGE OF UNDERWAY DATA COLLECTED

Cruise- 7599 miles

Magnetics- 4397 miles

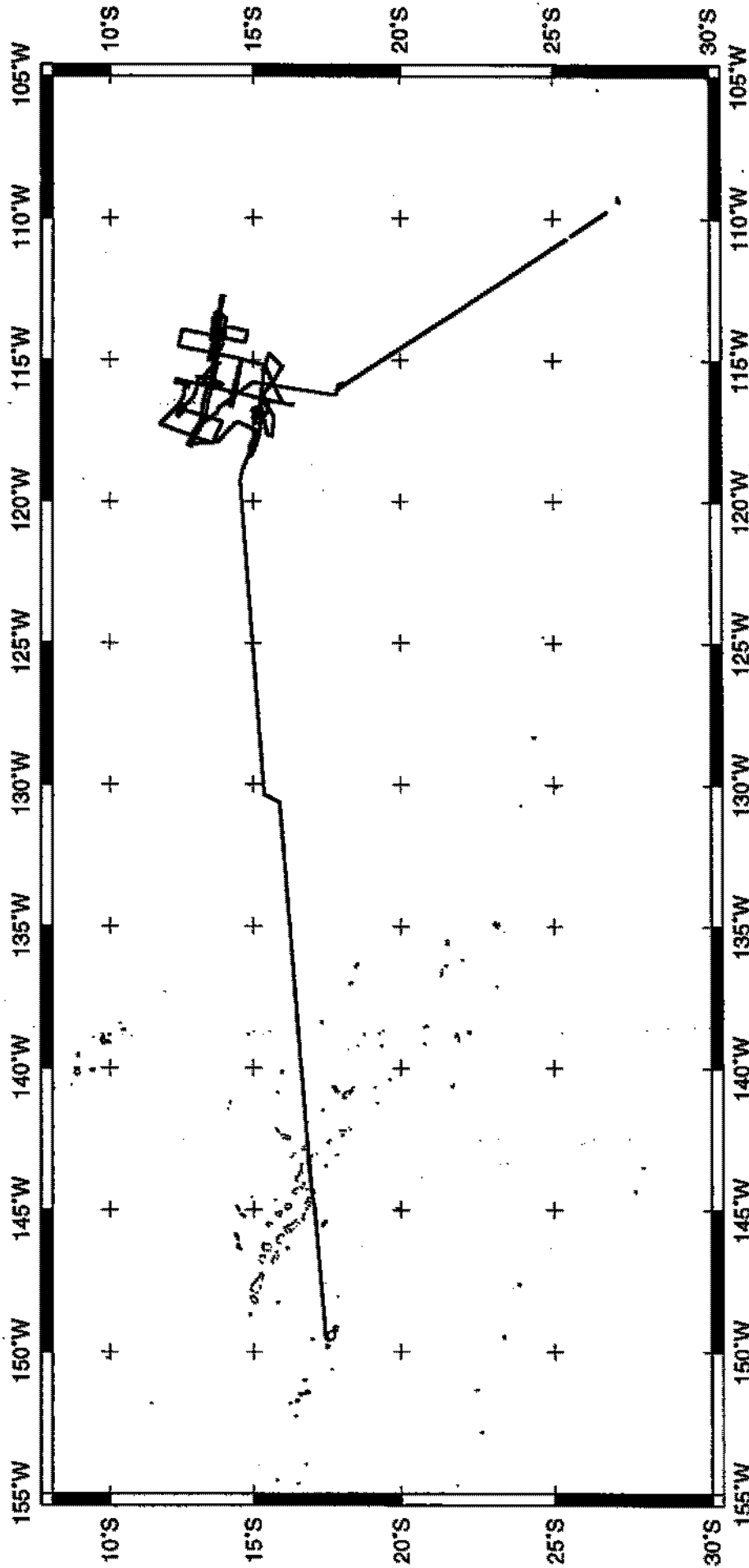
Bathymetry- 7074 miles

Seismic Reflection- 60 miles

Sea Beam- 7074 miles

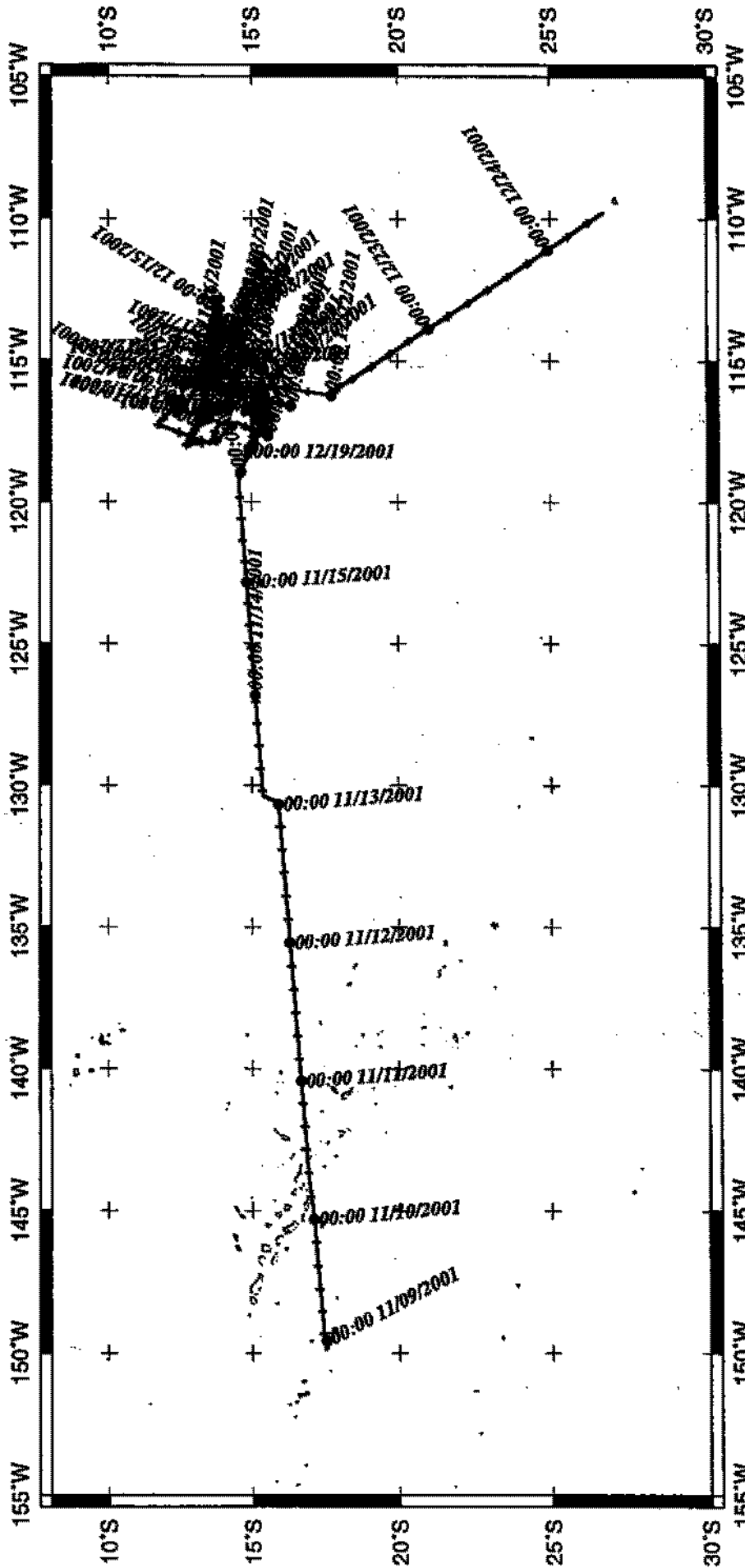
Gravity- 7399 miles

COOK16MV

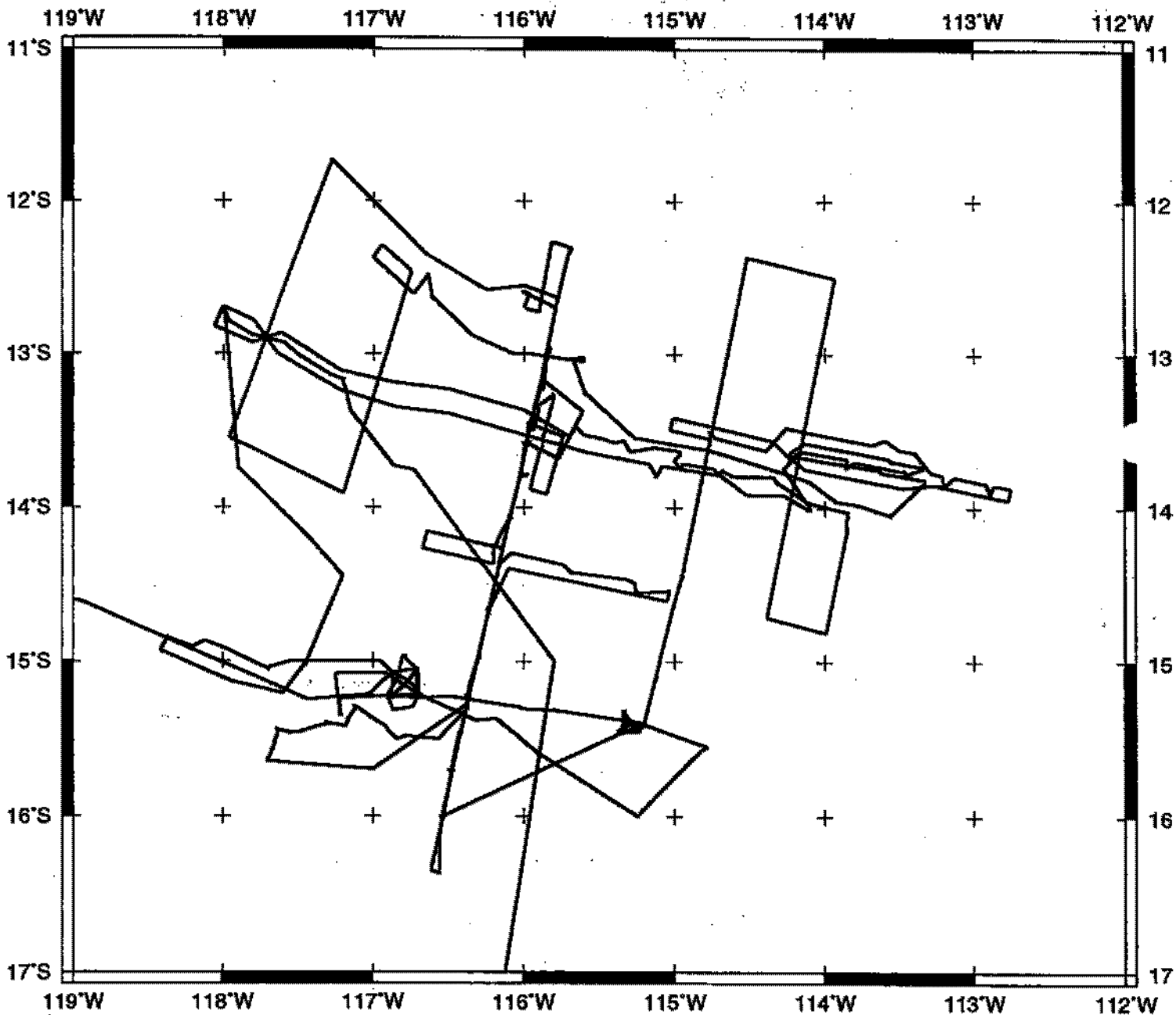


GMT 2002 Feb 8 10:11:50 : Papete, Tahiti - Easter Island, Chile 00 November - 24 December 2001:

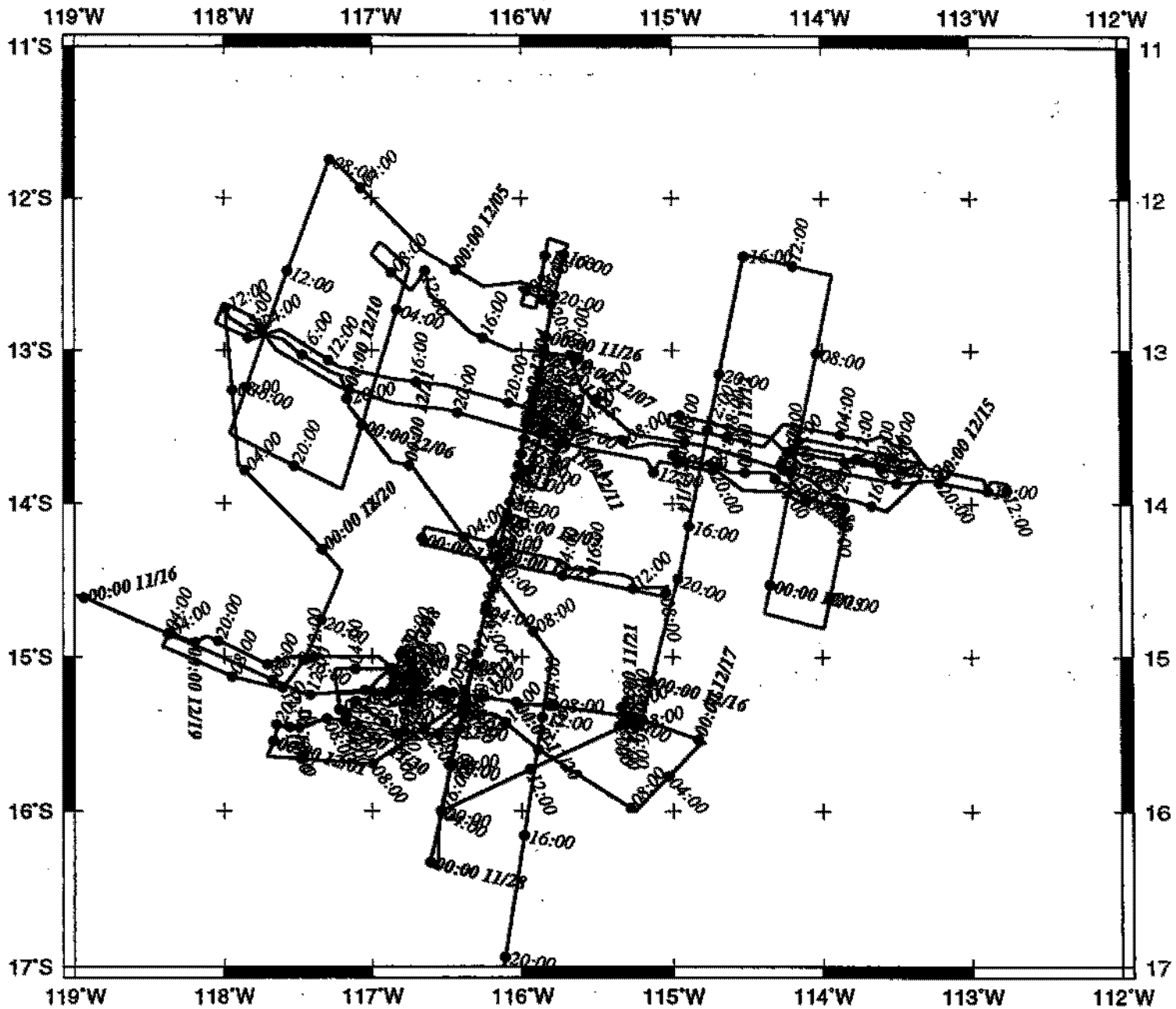
COOK16MV

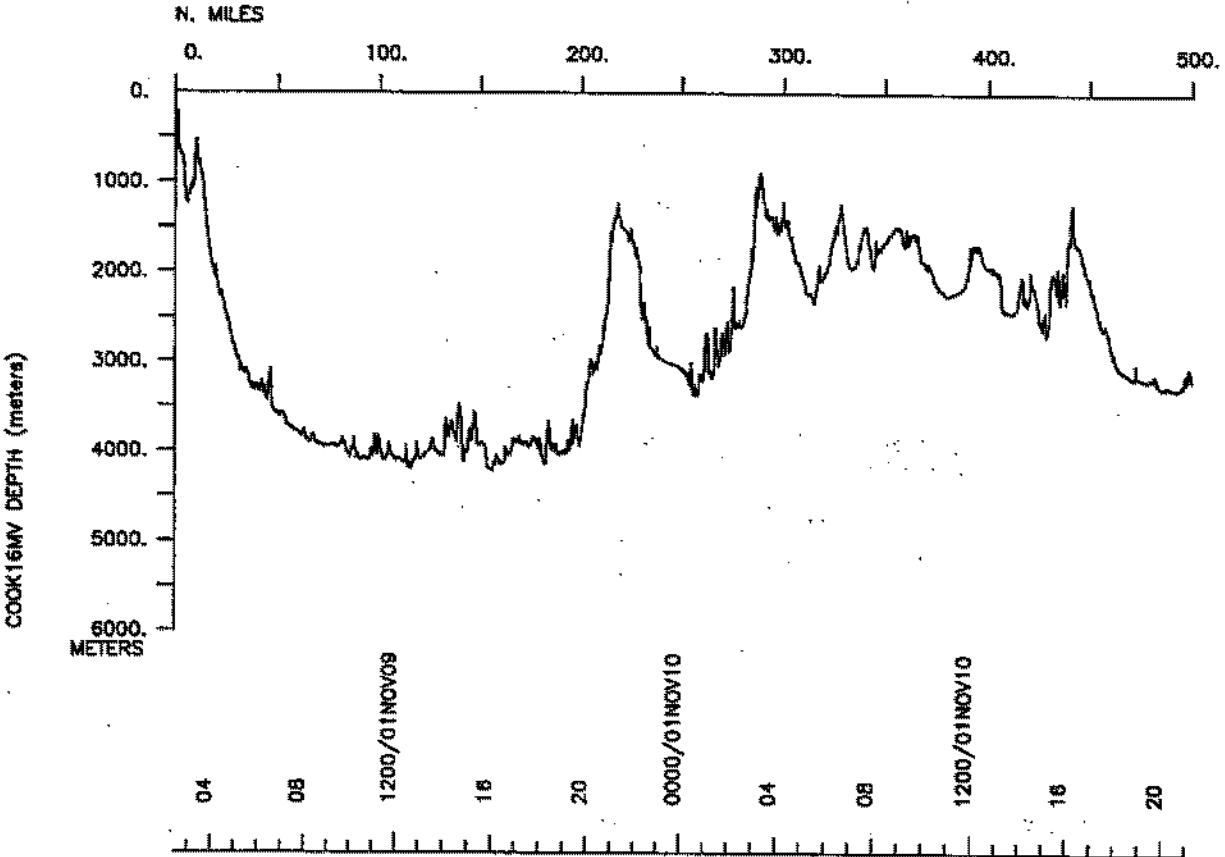
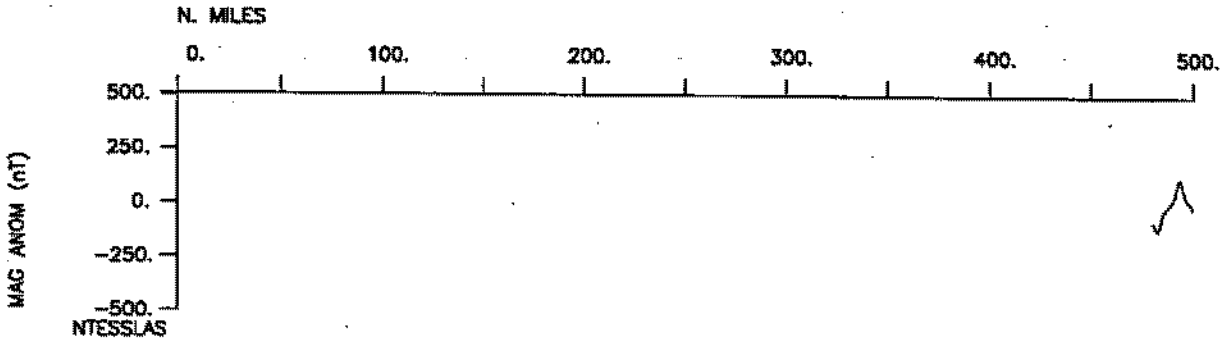
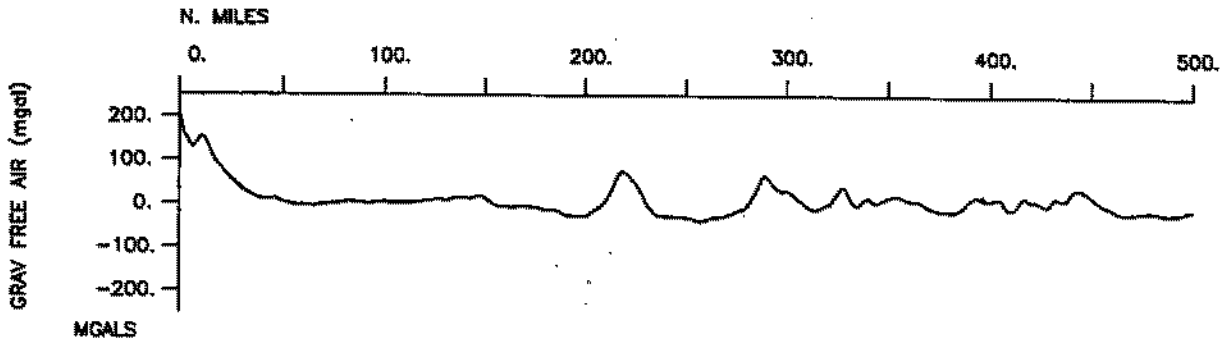


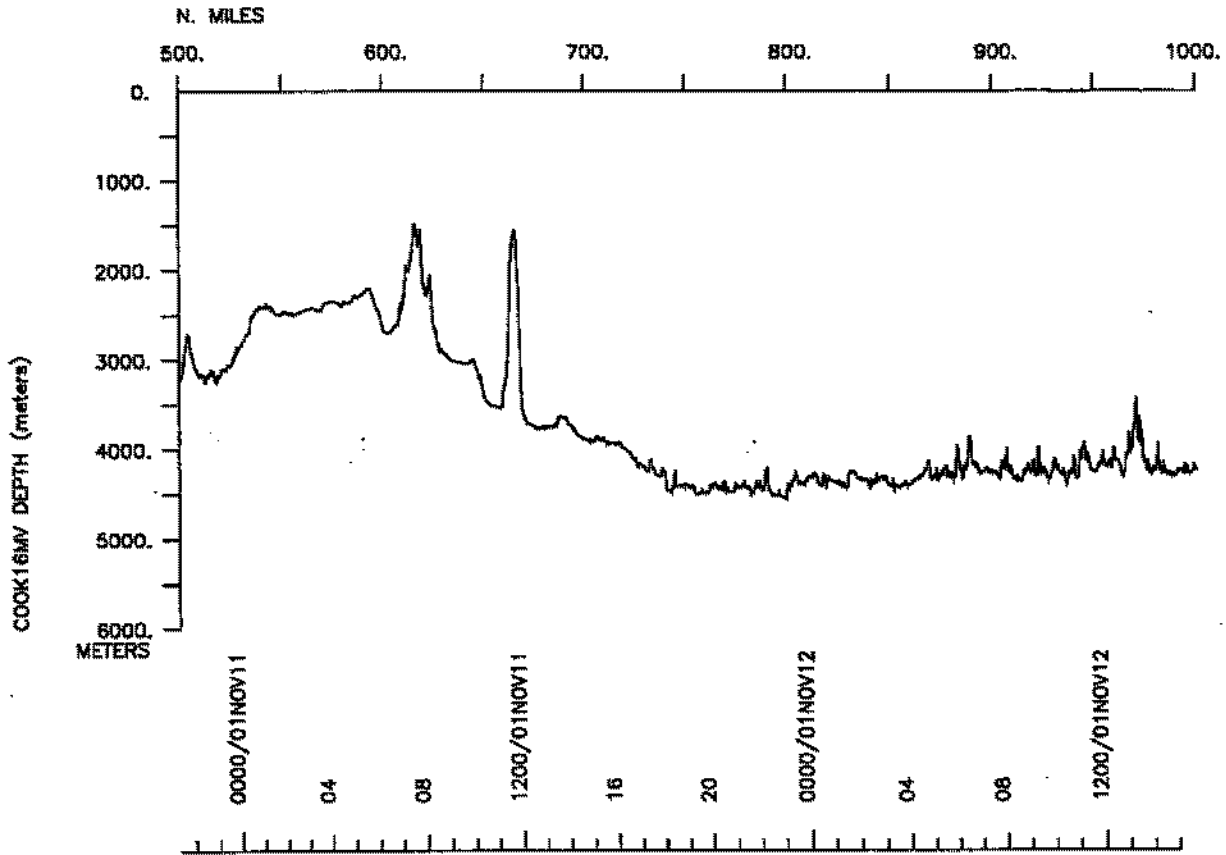
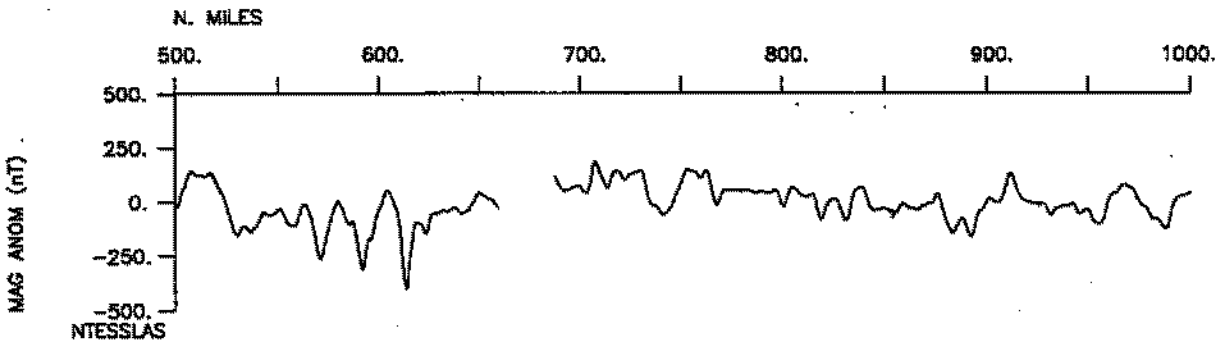
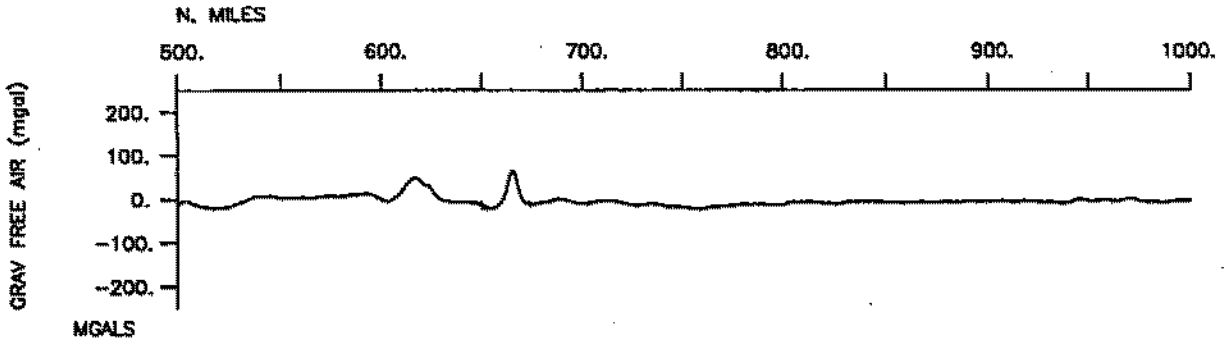
COOK16MV

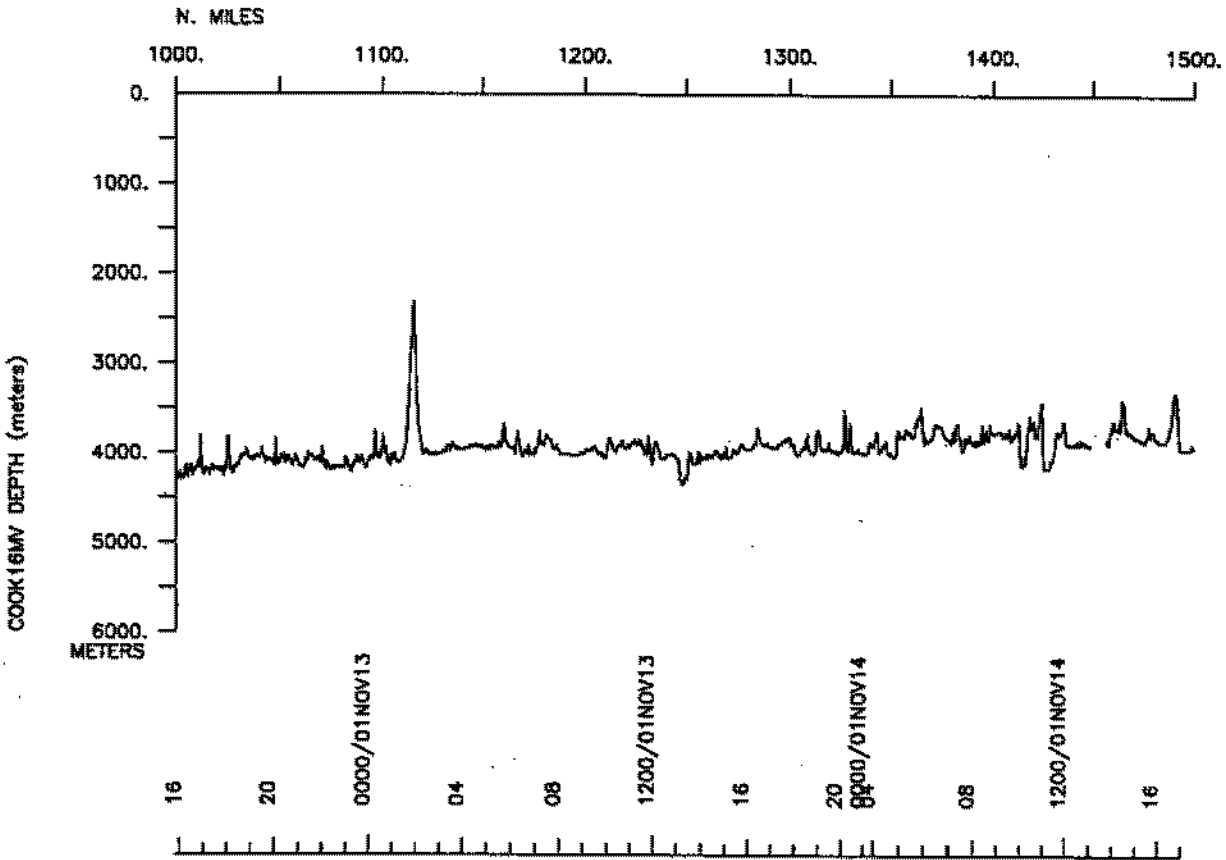
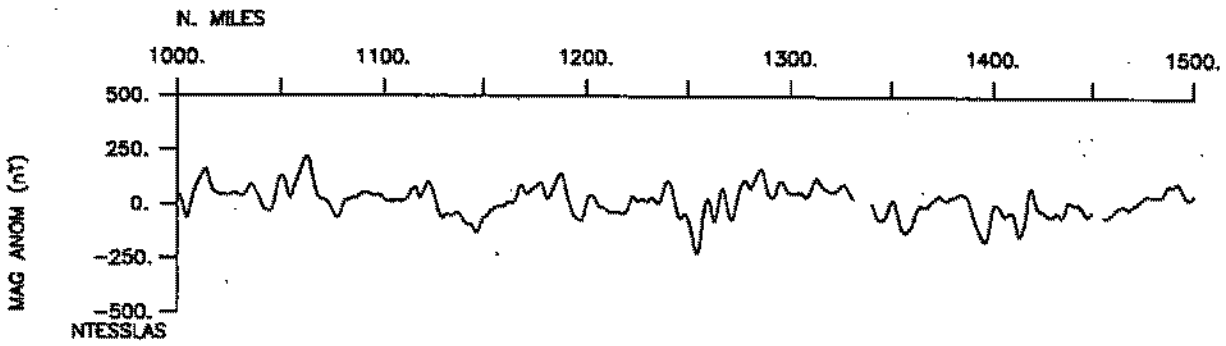
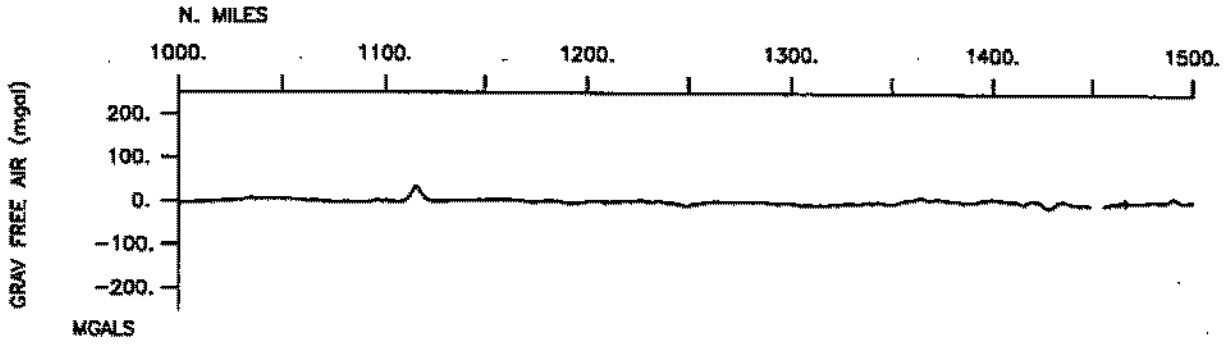


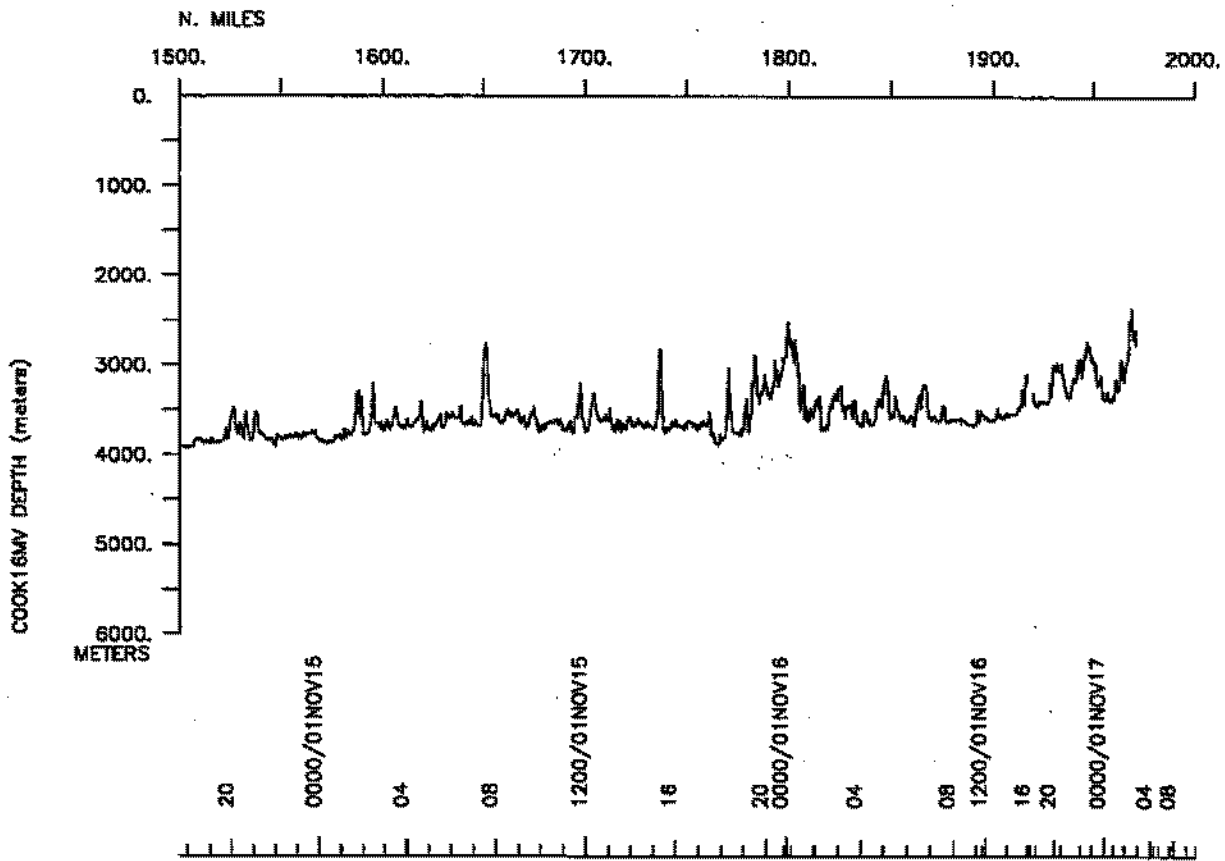
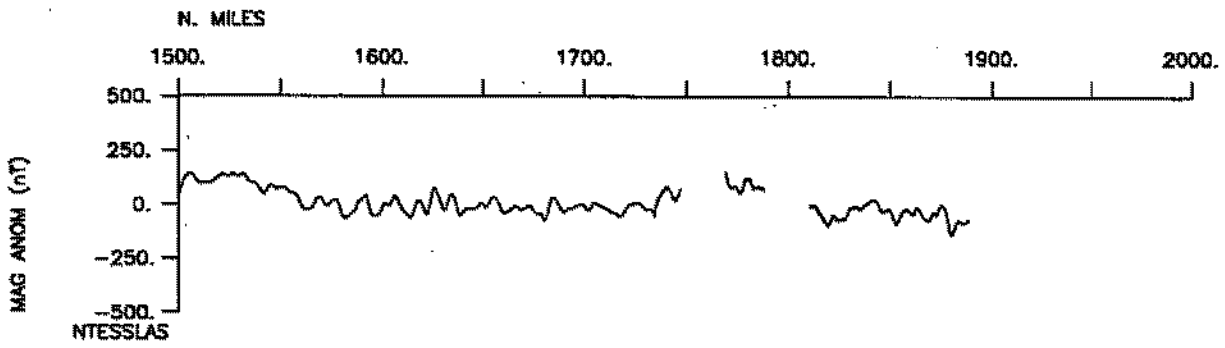
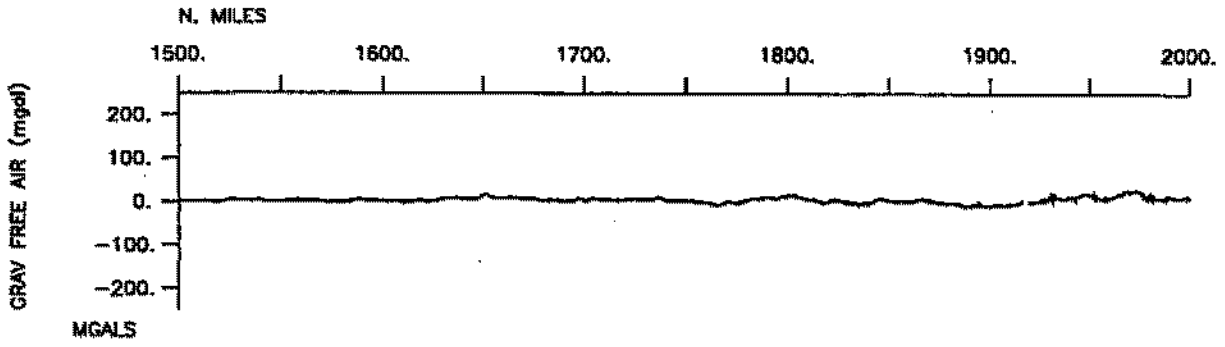
COOK16MV

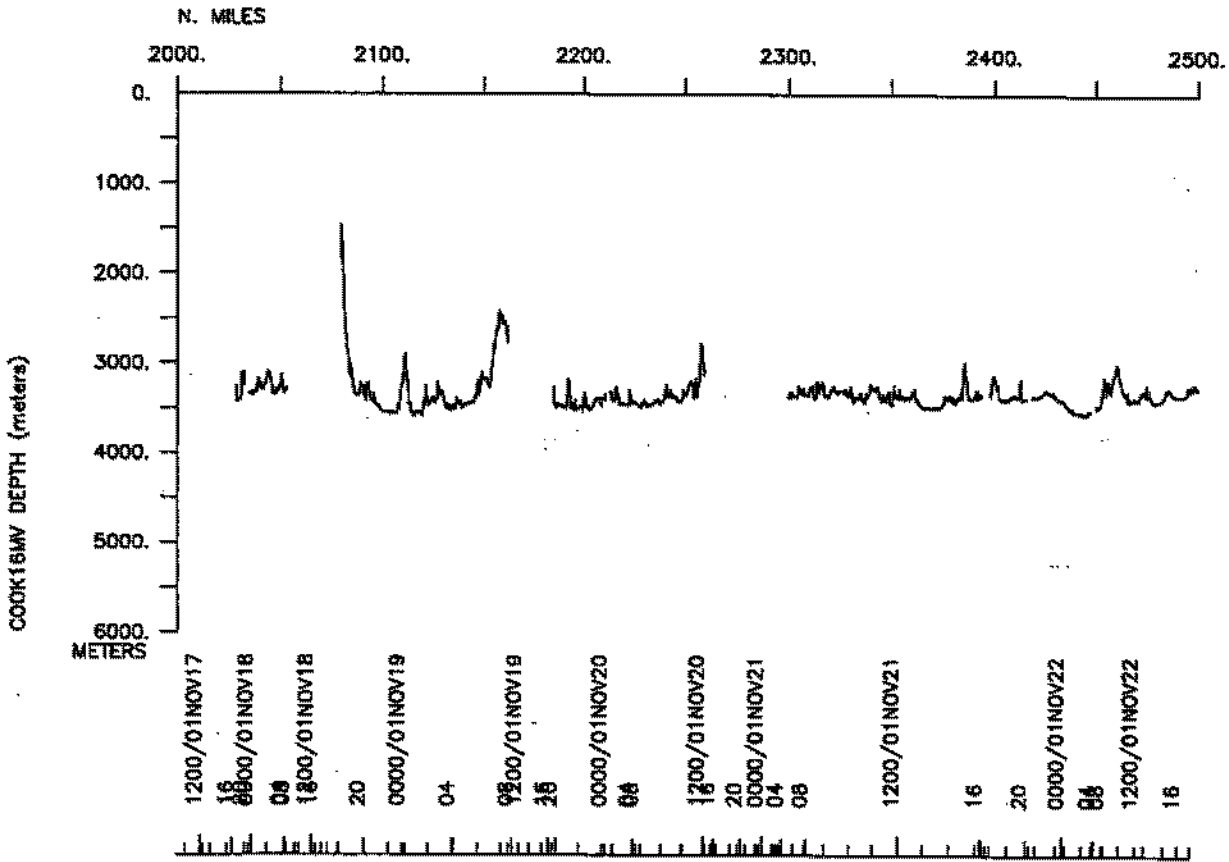
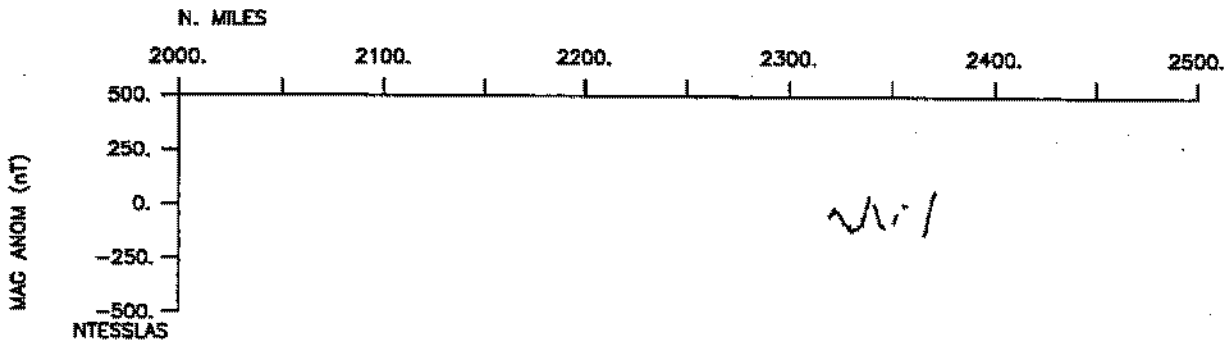
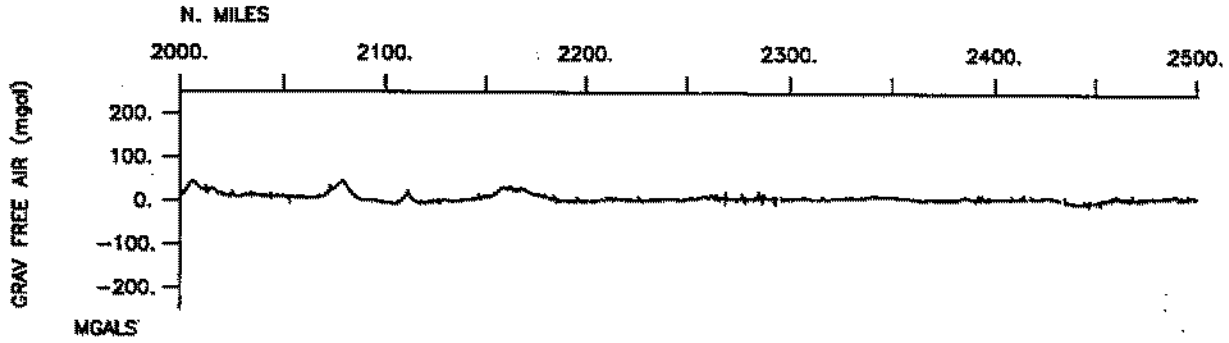


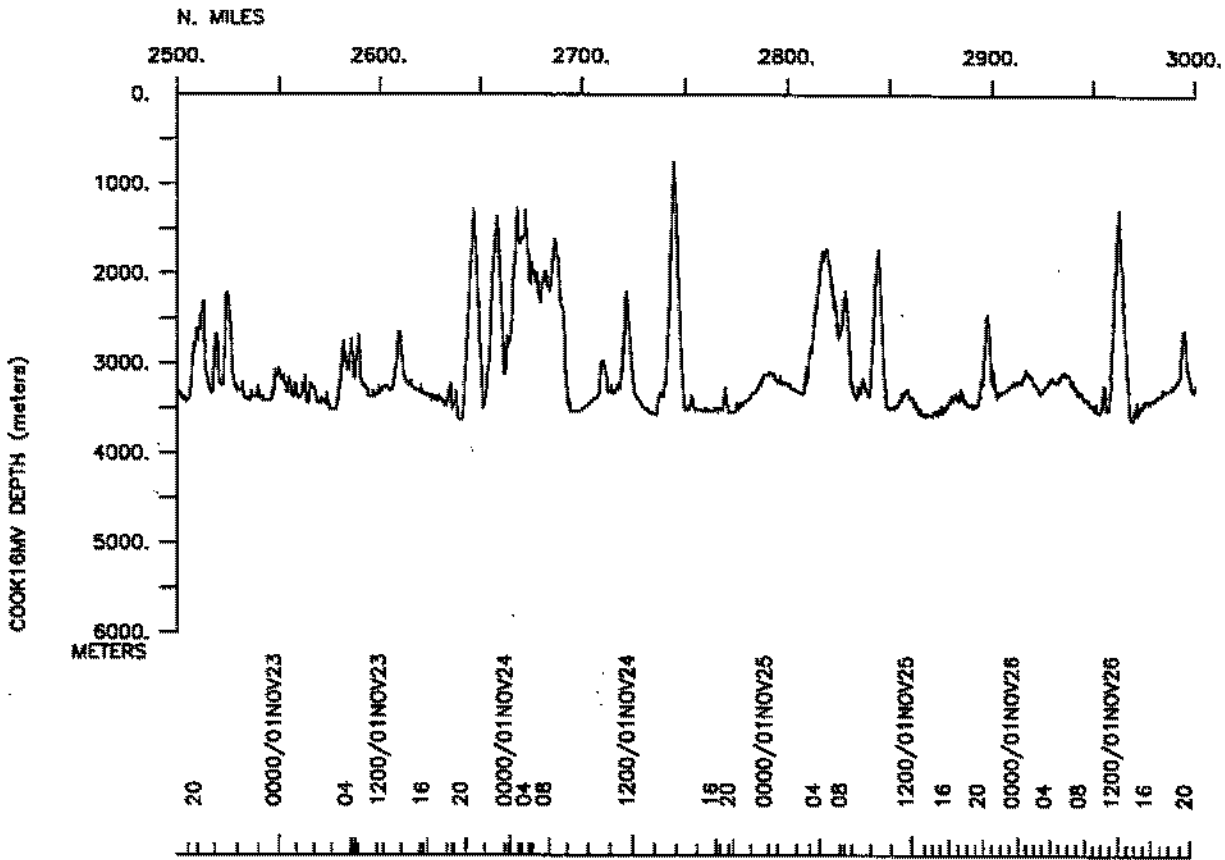
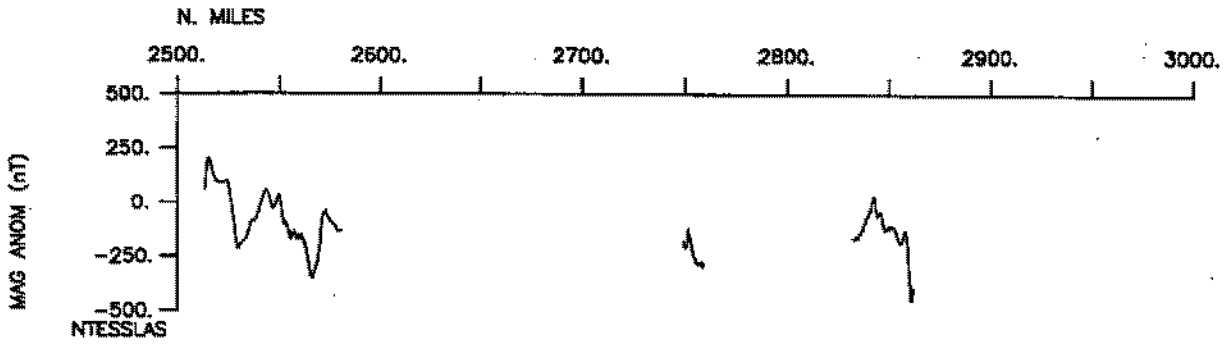
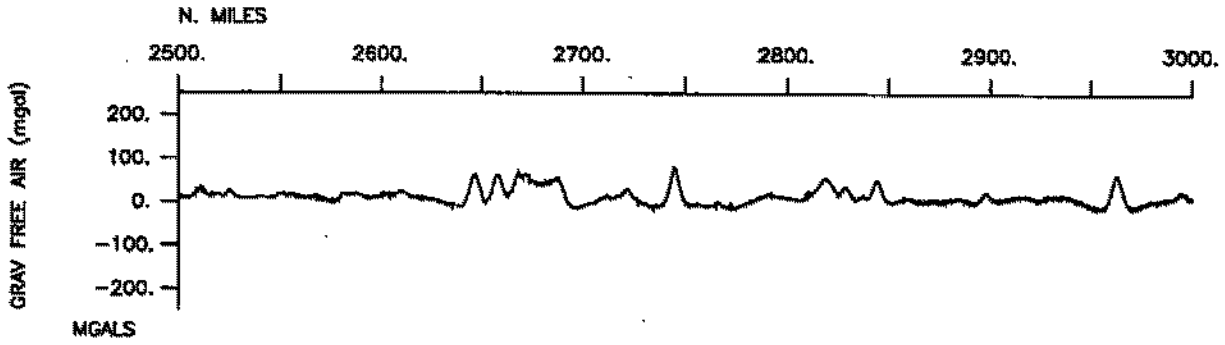


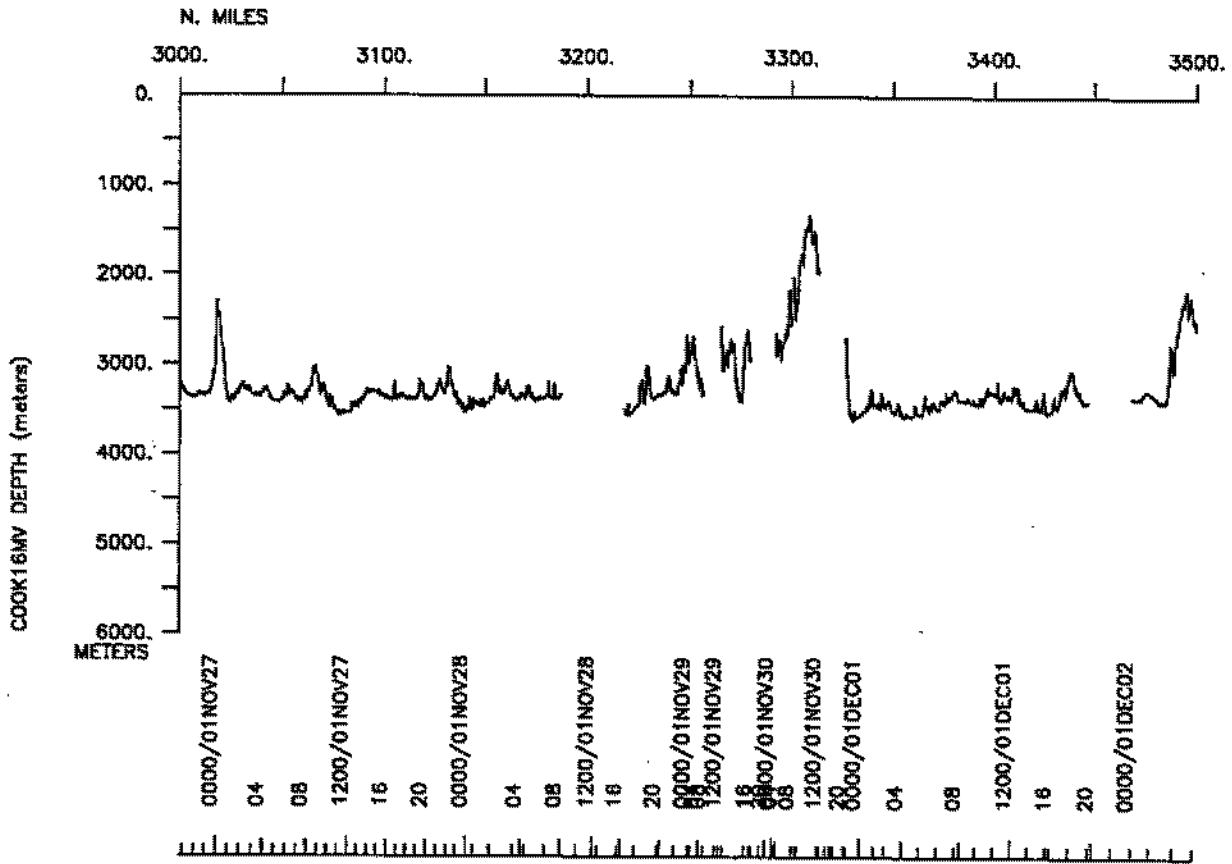
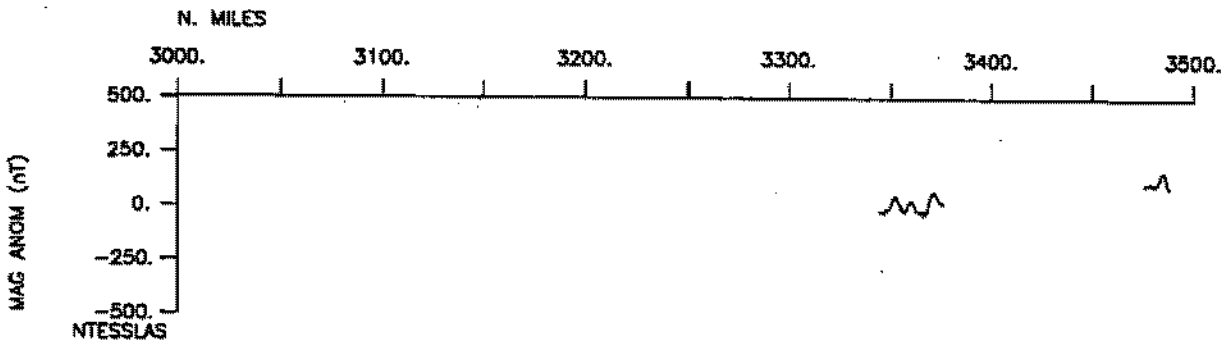
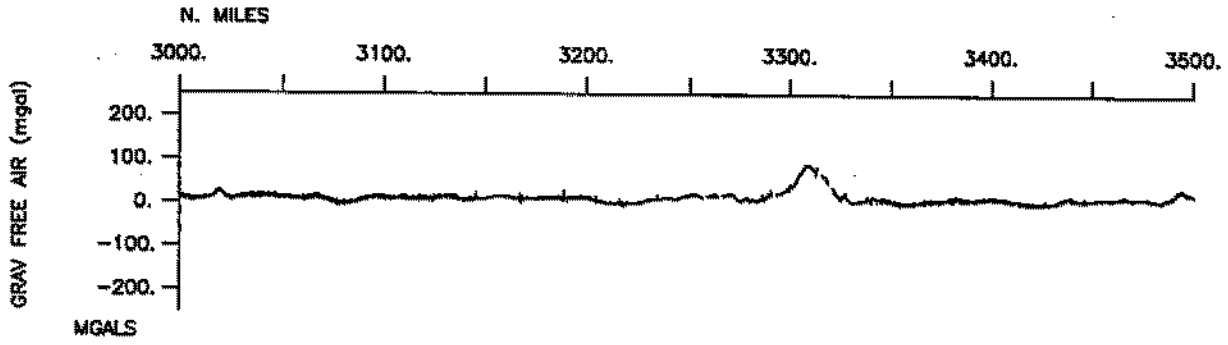


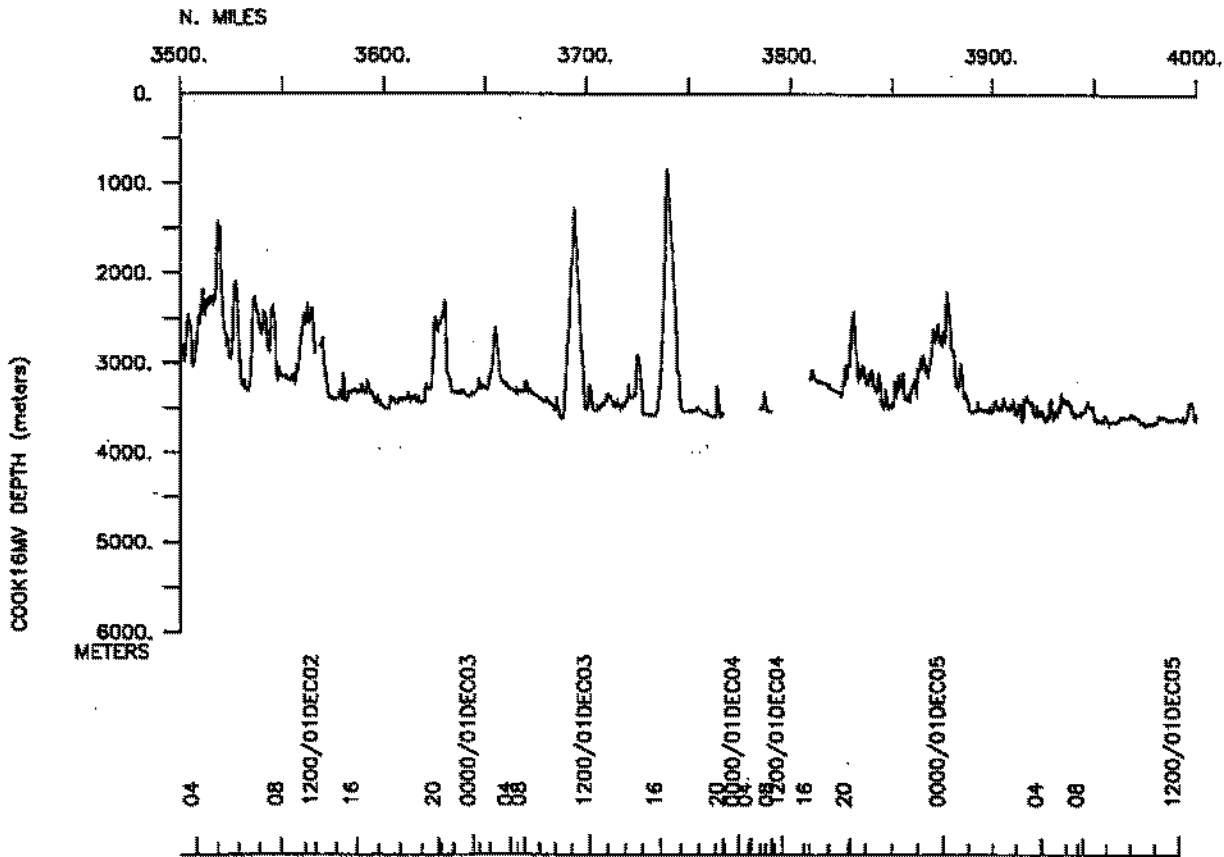
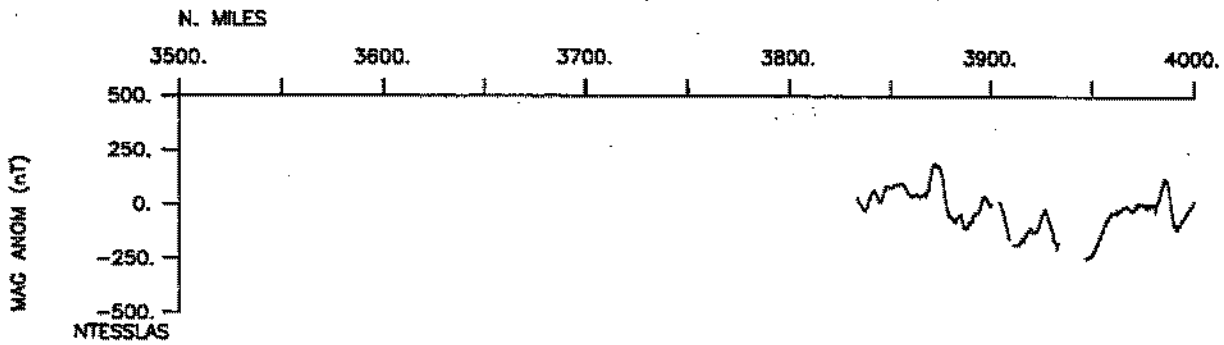
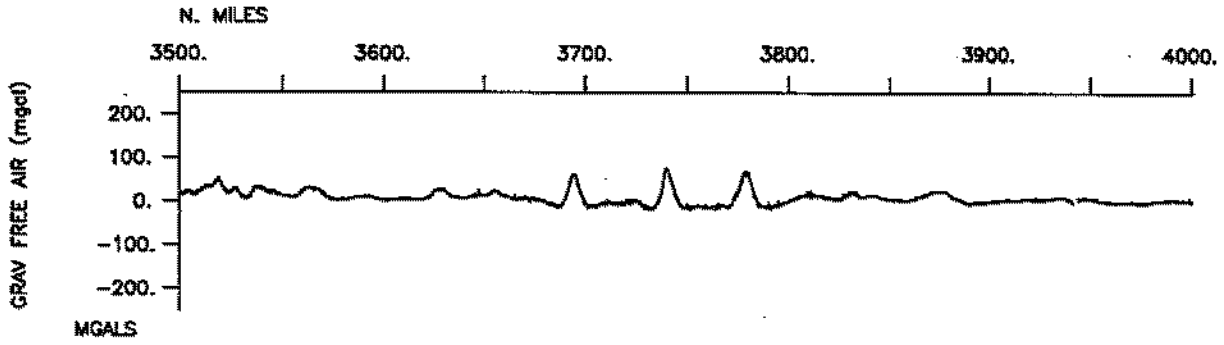


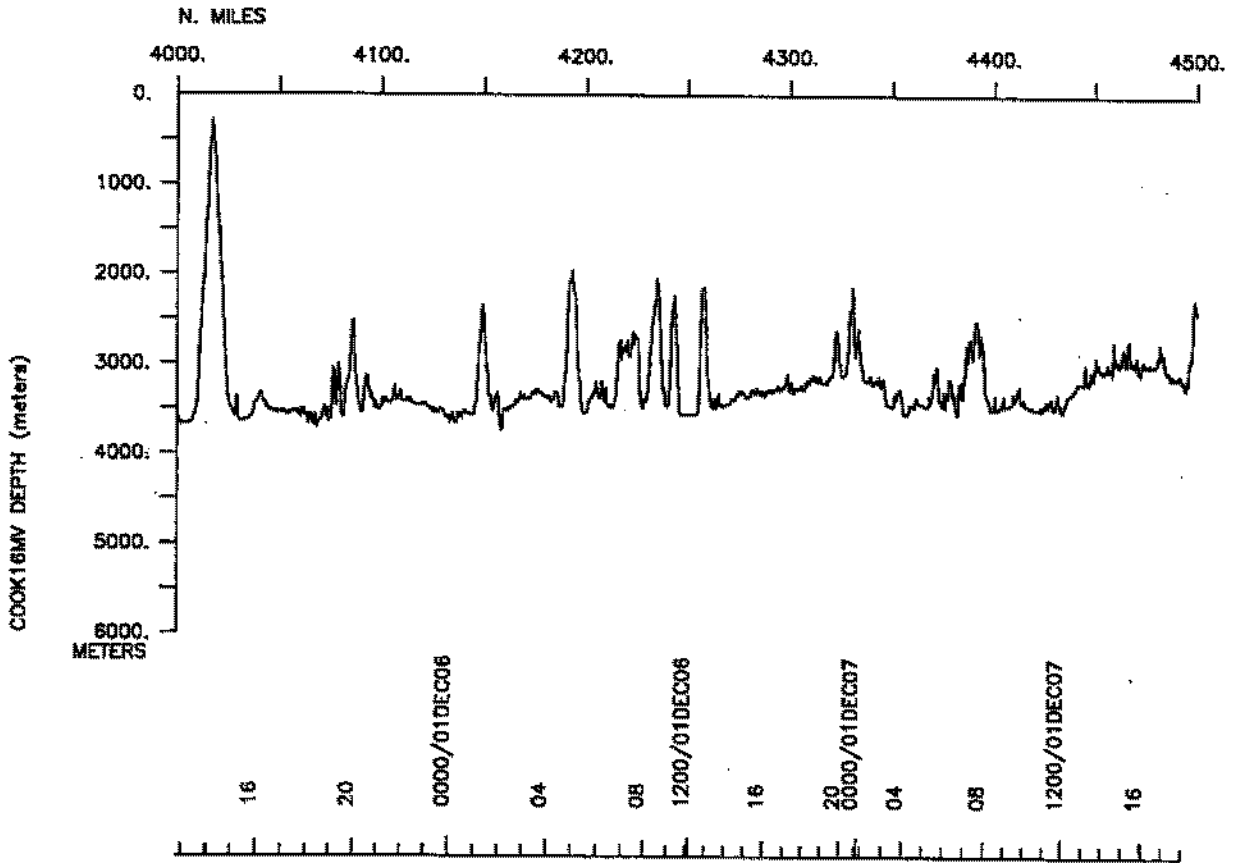
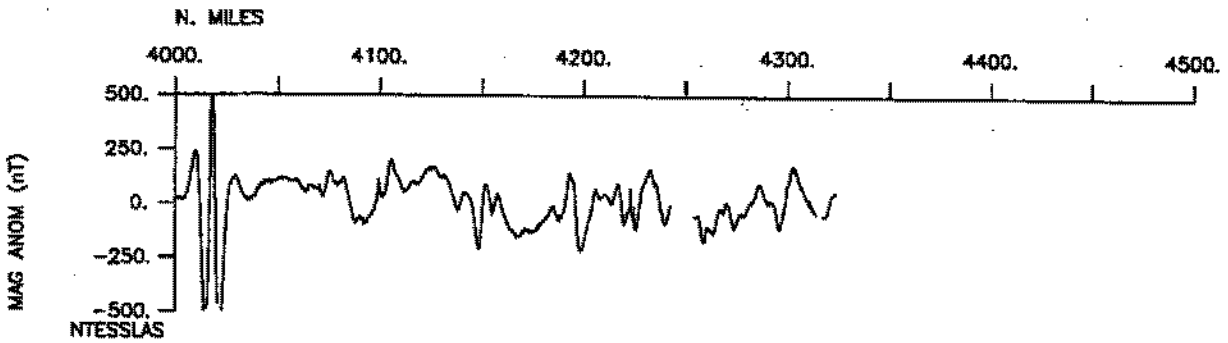
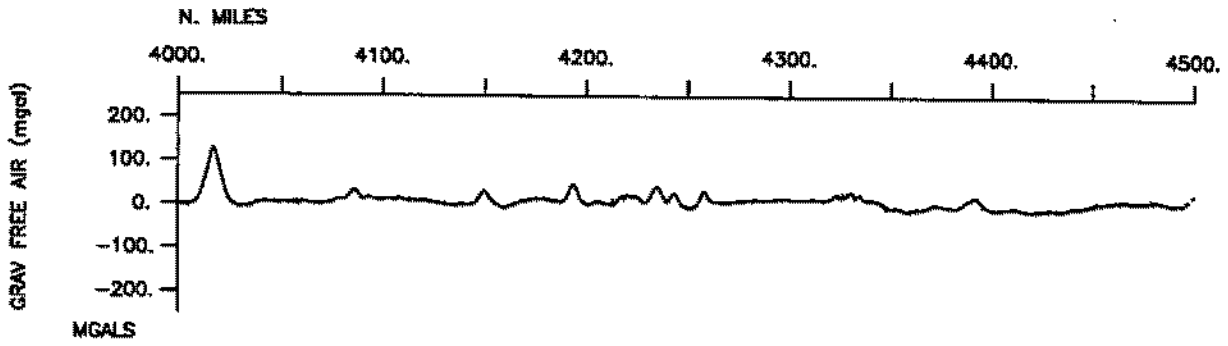


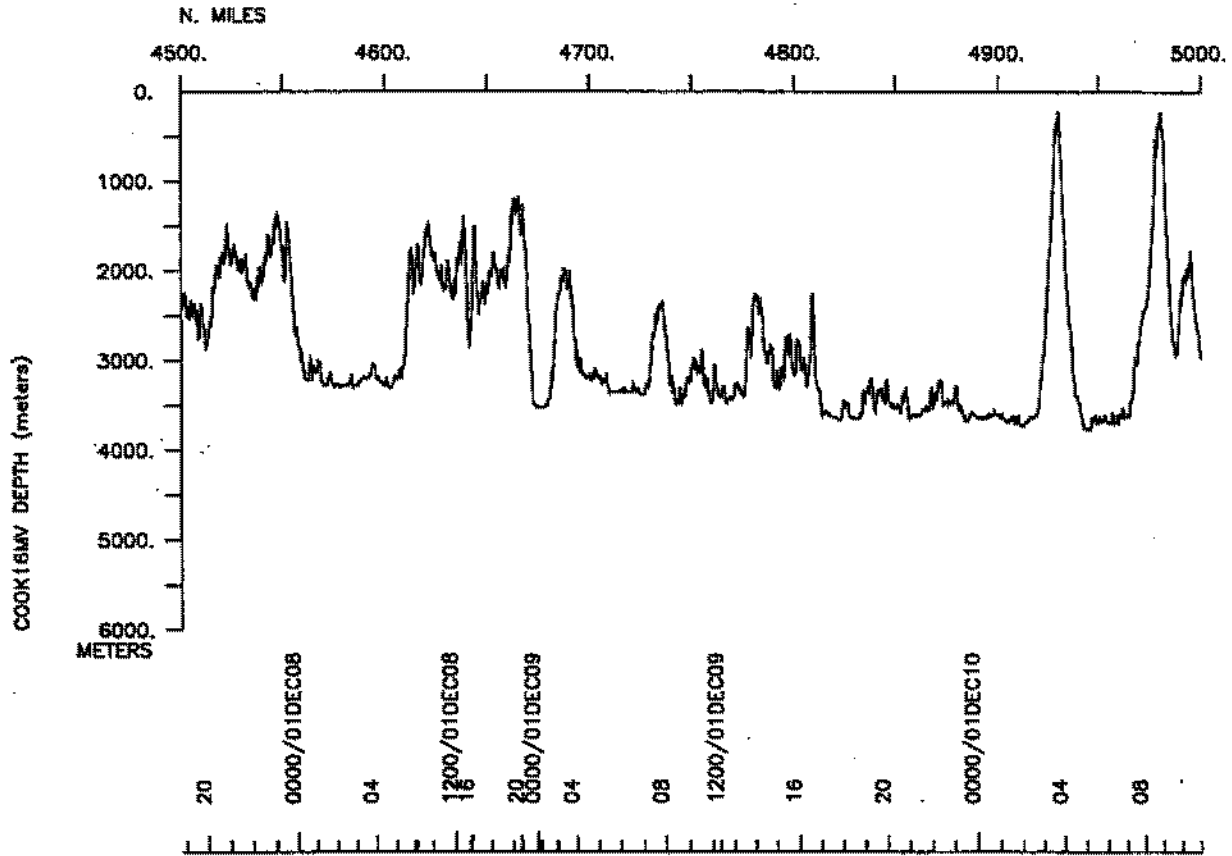
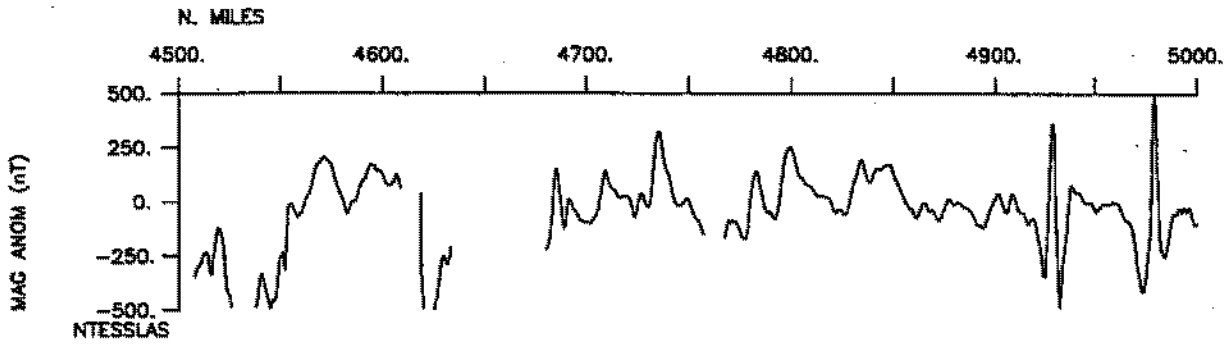


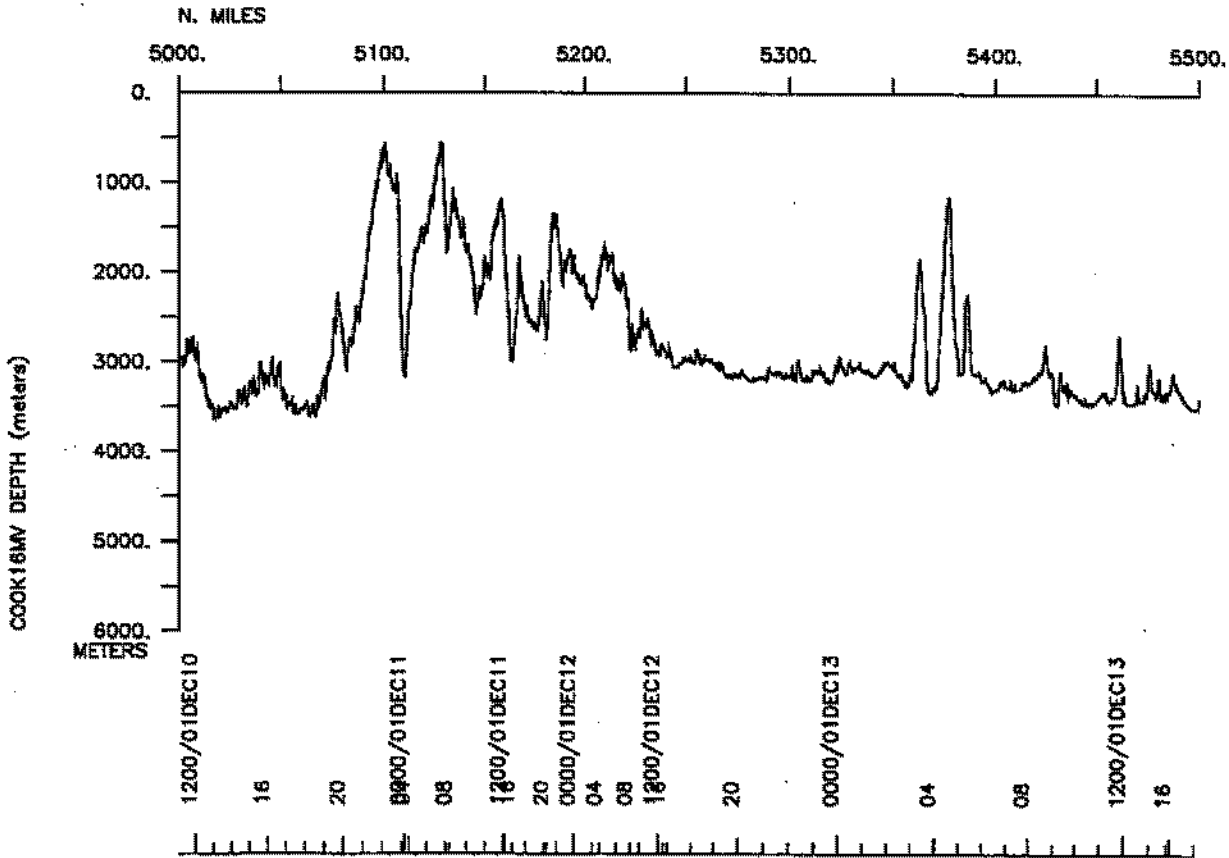
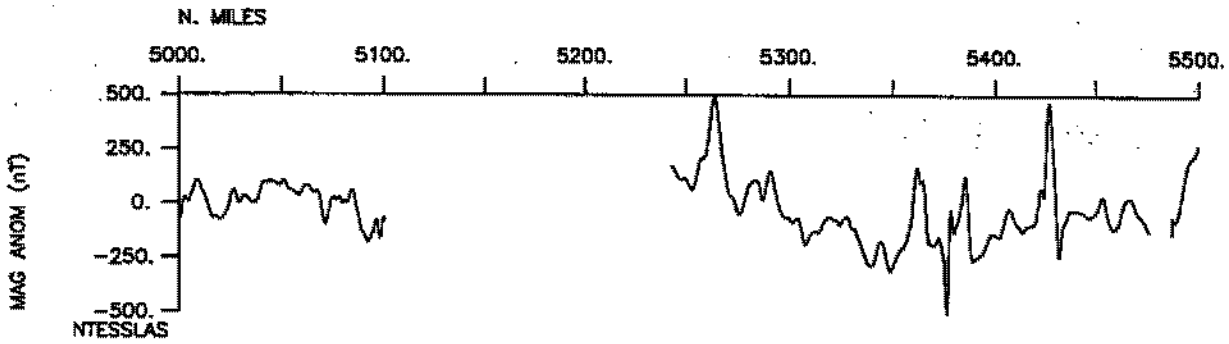
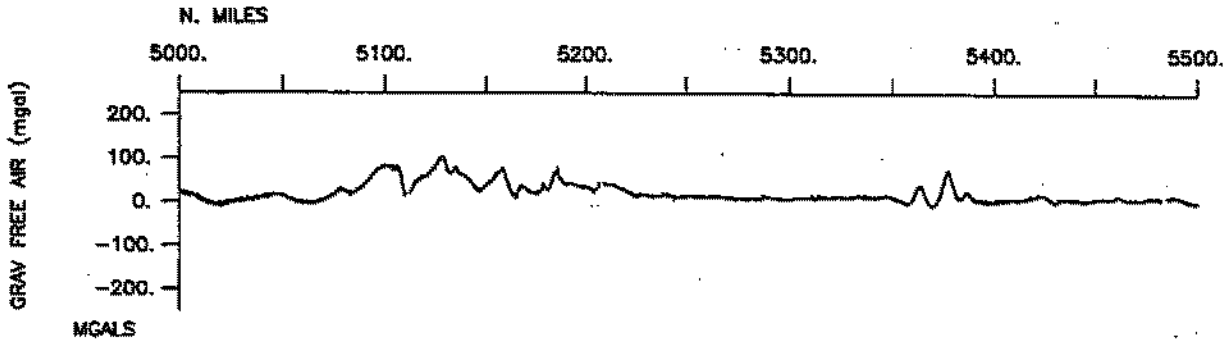


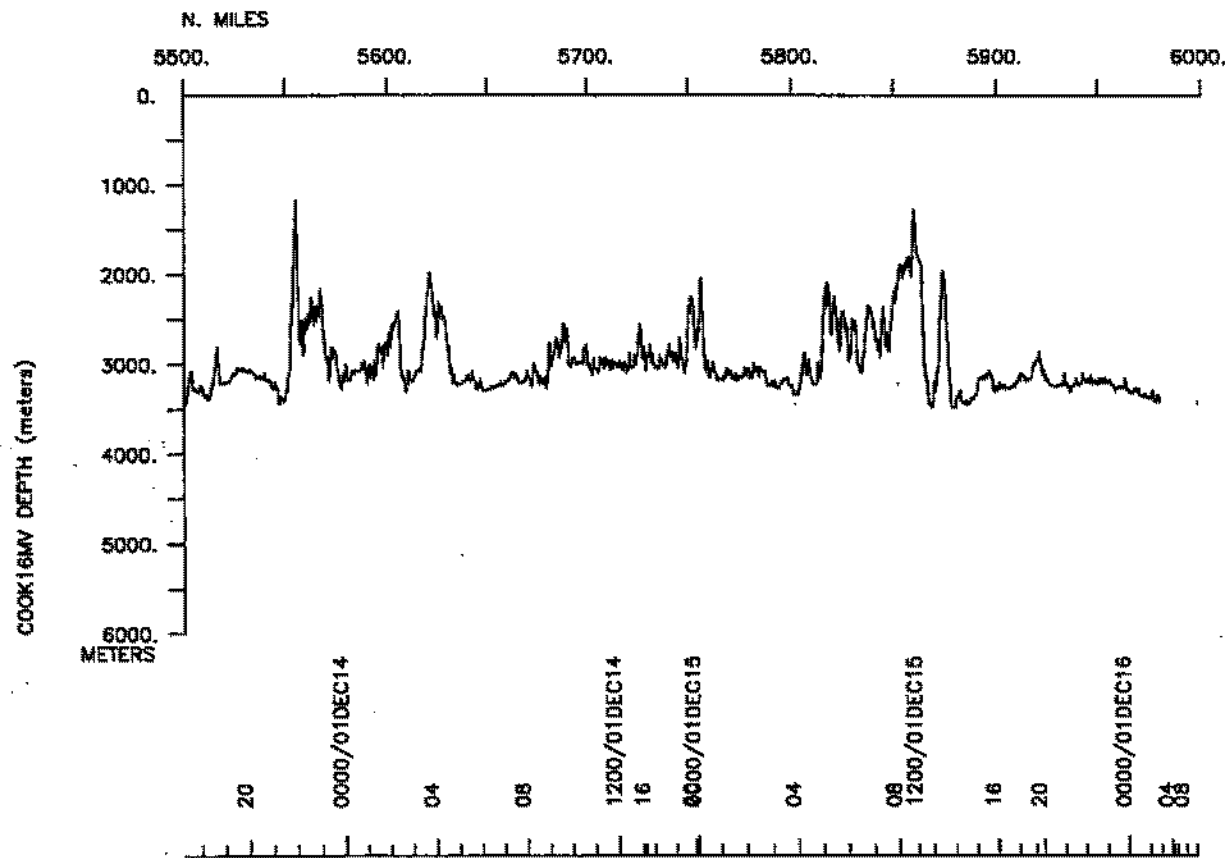
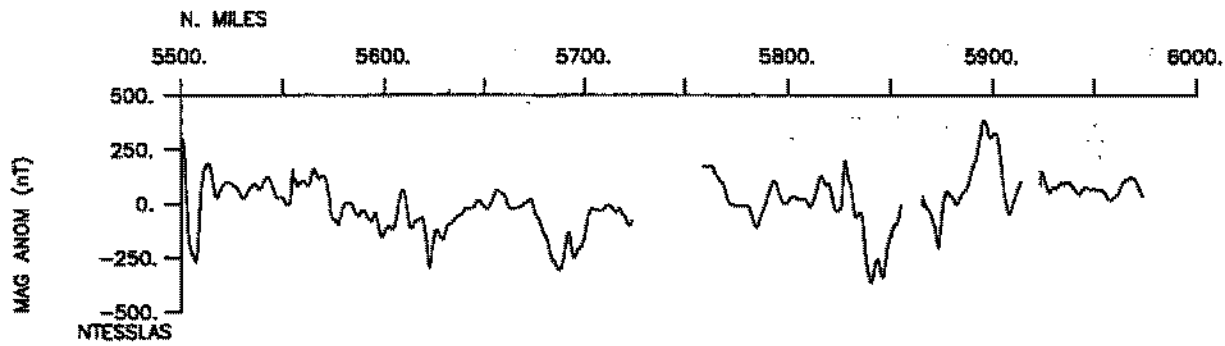


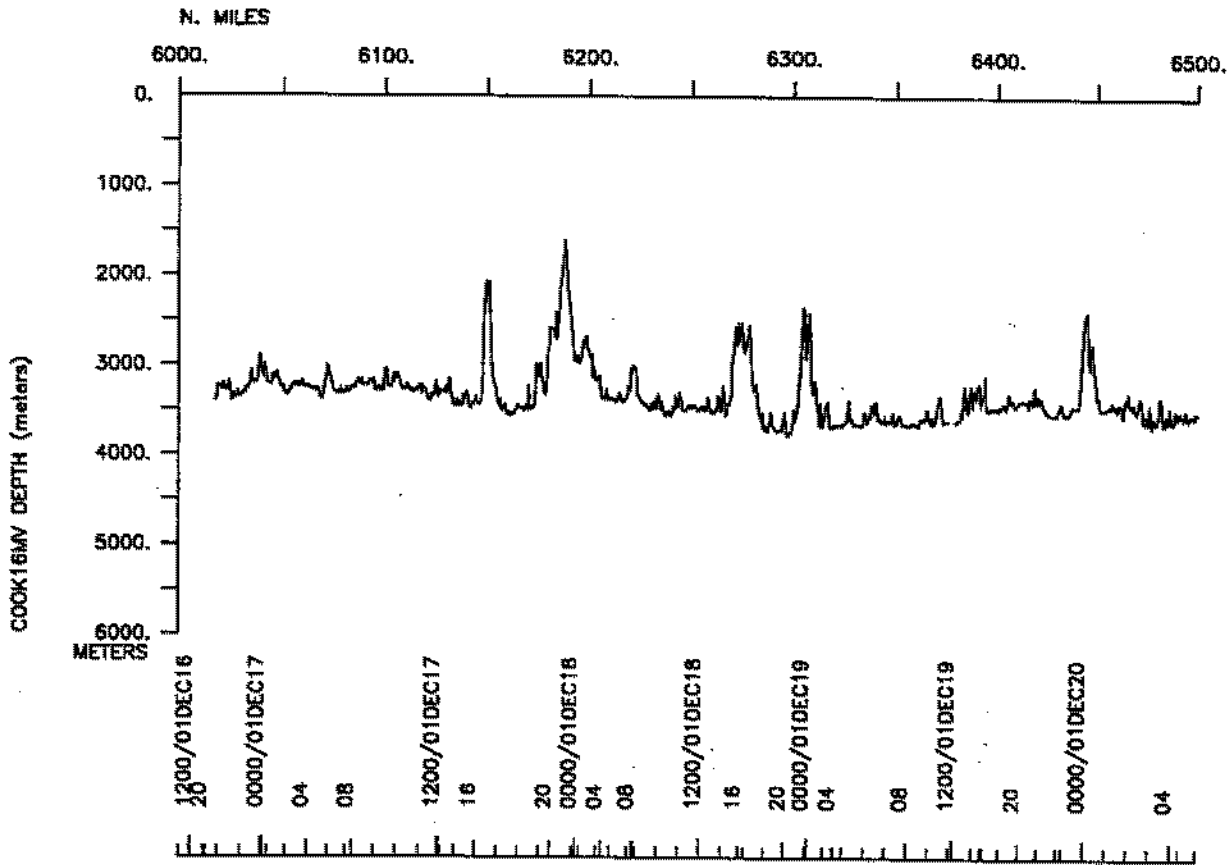
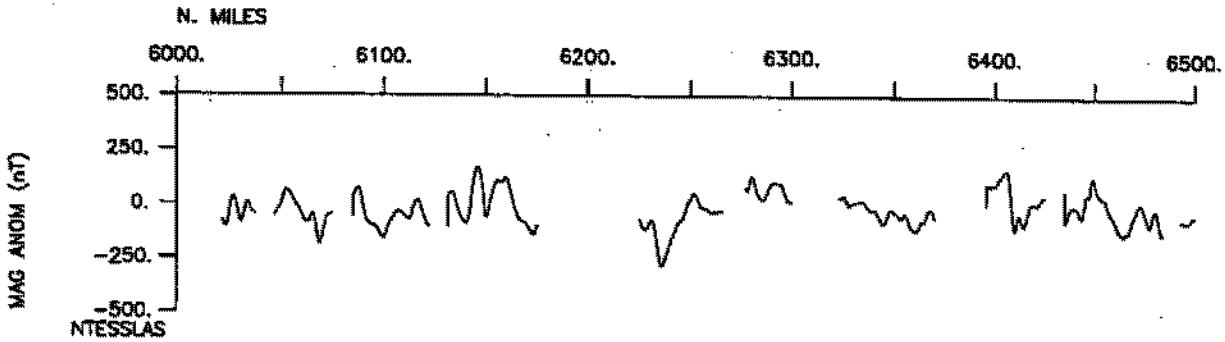


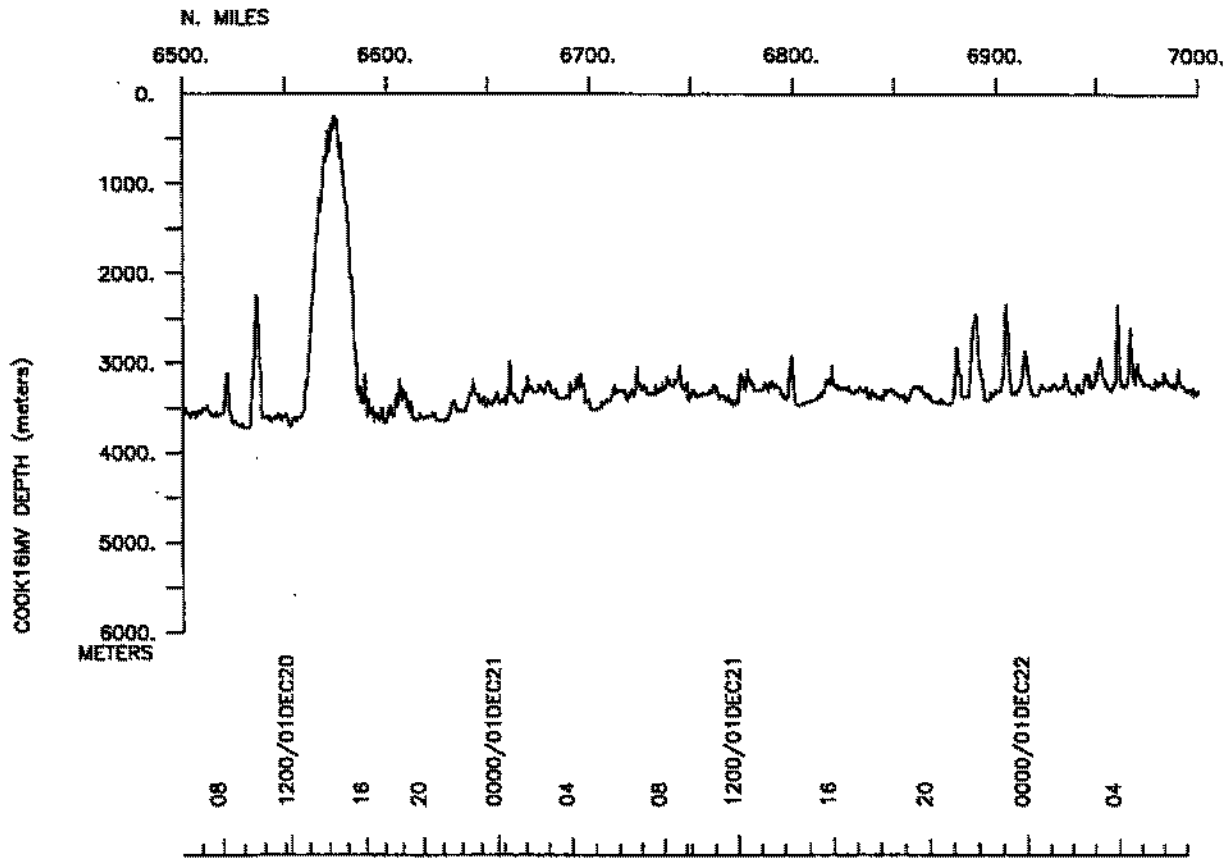
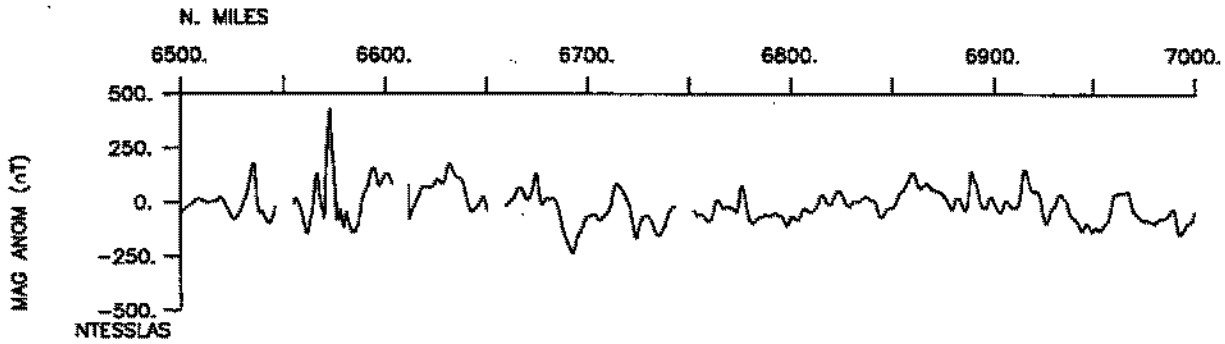
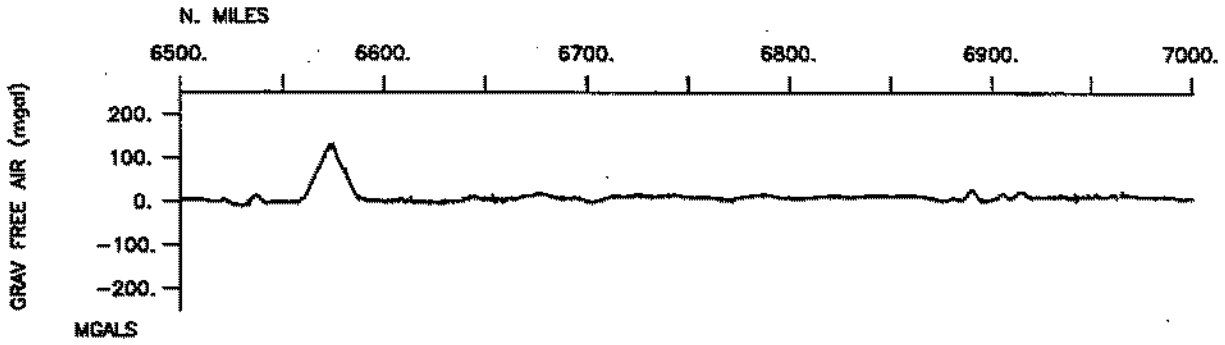


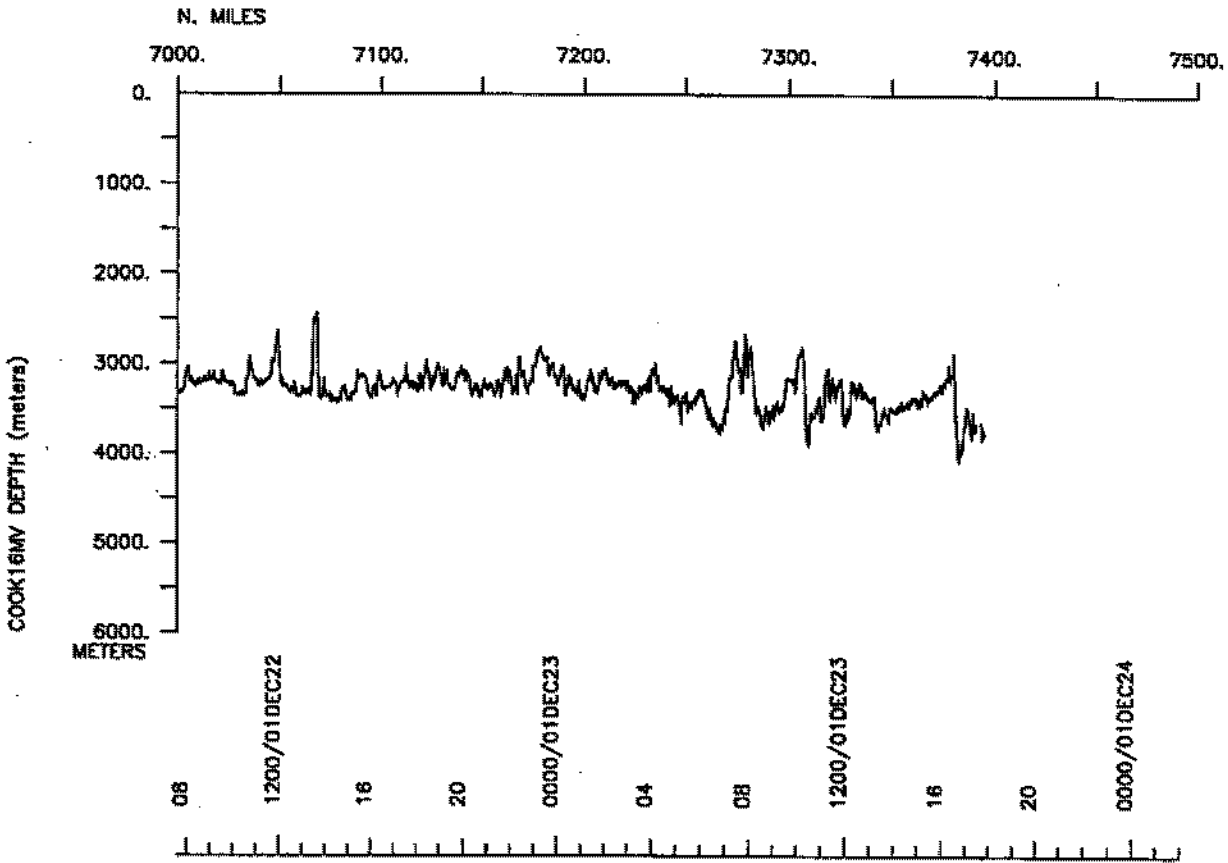
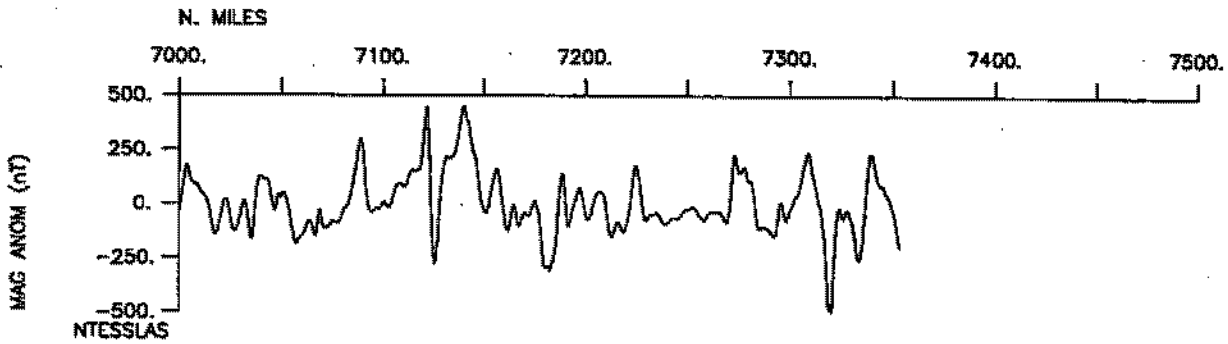
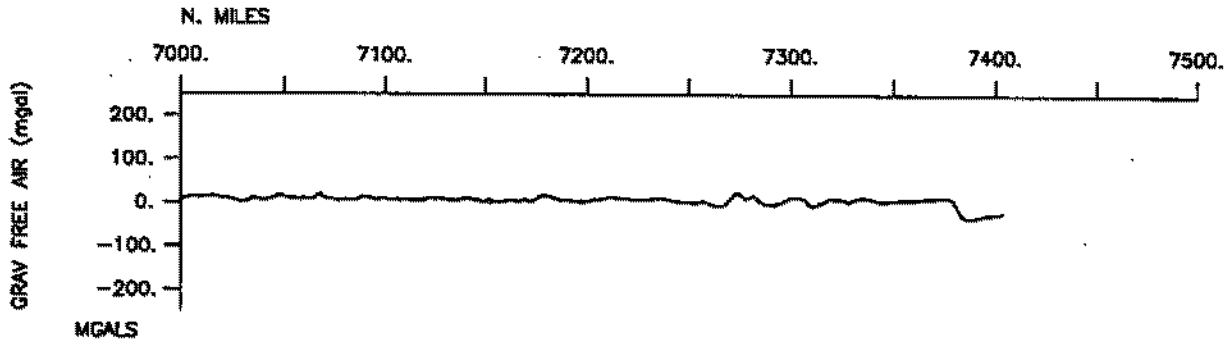


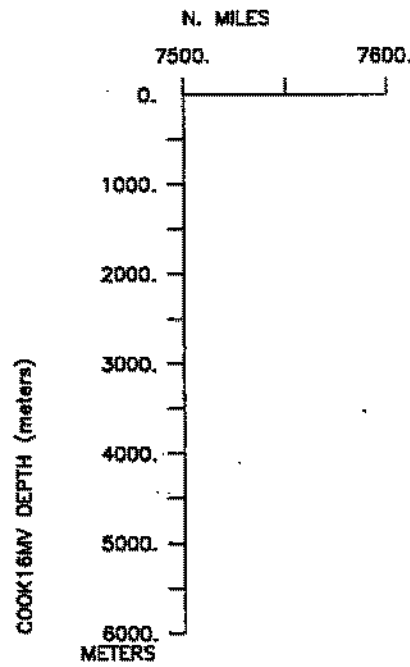
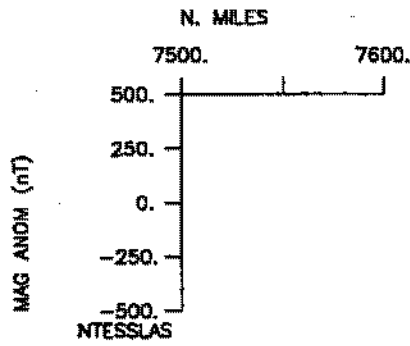
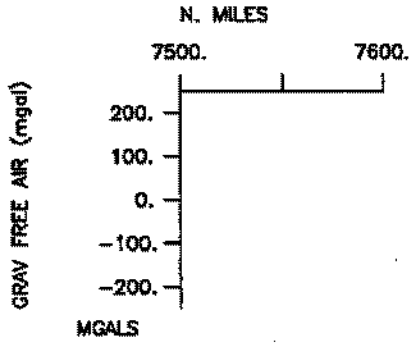












**** Ports ***

0230	091101	LGPT B	Papeete, Tahiti	17-32.00S	149-34.00W	f	COOK16MV
1100	241201	LGPT E	Easter Is., Chile	27-09.00S	109-27.00W	f	COOK16MV

**** Personnel ***

#	*****NAME*****	*****TITLE*****	*****AFFILIATION*****	**CRID**
PECS SIX	Forsyth, D.	Chief Scientist	Brown University	COOK16MV
PEST URI	Jordan, B.	Grad student	U. of Rhode Island	COOK16MV
PEST SIX	Yang, Y.	Grad student	Brown University	COOK16MV
PEST SIX	Harmon, N.	Grad student	Brown University	COOK16MV
PEST SIX	Rychert, C.	Grad student	Brown University	COOK16MV
PESP SIX	Scheirer, D.	Scientist	Brown University	COOK16MV
PESP SIX	Scheirer, A.	Scientist	Brown University	COOK16MV
PESP LDEO	Webb, S.	Scientist	Columbia University	COOK16MV
PESP LDEO	Jonke, P.	Scientist	Columbia University	COOK16MV
PEST LDEO	Mcklernan, B	Technician	Columbia University	COOK16MV
PEST SIX	Rittger, K.	Student	Brown University	COOK16MV
PEST LDEO	Cottrell, E.	Grad student	Lamont Doherty	COOK16MV
PEST LDEO	Donnelly, K.	Grad student	Lamont Doherty	COOK16MV
PESP LDEO	Hanley, J.	Technician	Lamont Doherty	COOK16MV
PEST SIX	Weeraratne, D.	Grad student	Brown University	COOK16MV
PECT SCG	Chatwood, J.	Computer tech	Scripps Institution	COOK16MV
PEAT SCG	Mogk, S.	Airgun tech	Scripps Institution	COOK16MV
PERT STS	Wilson, R.	Resident tech	Scripps Institution	COOK16MV

**** NOTES ***

#An 'X' in the (B)egin/(E)nd column following the sample code indicates no #sample or data recovered. A 'C' indicates continuation of data collection #from before the beginning or after the end of a particular leg, (moored #bottom instruments, for example.) The number appearing in the columns #between the sample identifier and the disposition code, for many sample #entries, is the water depth in corrected meters.

#GMT DDMYY	SAMP B	SAMPLE	DISP				p	CRUISE
#TIME DATE	TZ	CODE E	IDENTIFIER	CODE	LATITUDE	LONGITUDE	c	LEG-SHIP

**** Underway Data Curator - Shipboard Technical Support Group ext.41899 ***
 **** Digital Data Curator - Geological Data Center, S.P. Miller, ext.41898 ***

**** Log Books ***

0230	091101	0	LBSC B	Forsyth's Log	SIX	17-32.30S	149-34.16W	g	COOK16MV
1100	241201	0	LBSC E	Forsyth's Log	SIX	26-44.52S	109-46.63W	g	COOK16MV
0230	091101	0	LBSC B	Core-Dredge Log	LDEO	17-32.30S	149-34.16W	g	COOK16MV
1659	191201	0	LBSC E	Core-Dredge Log	LDEO	15-01.45S	117-26.92W	g	COOK16MV
0230	091101	0	LBSC B	OBS Log	LDEO	17-32.30S	149-34.16W	g	COOK16MV
1100	241201	0	LBSC E	OBS Log	LDEO	26-44.52S	109-46.63W	g	COOK16MV

#GMT #TIME #-----	DDMMYY DATE -----	TZ	SAMP B CODE E	SAMPLE IDENTIFIER	DISP CODE	LATITUDE	LONGITUDE	p c	CRUISE LEG-SHIP
*** MultiBeam Data (vertical beam and side scan) ***									
0235	091101	0	MBSR B	Seabeam r-01	GDC	17-31.30S	149-35.22W	g	COOK16MV
1227	091201	0	MBSR E	Seabeam r-01	GDC	13-47.16S	115-07.69W	g	COOK16MV
1235	091201	0	MBSR B	Seabeam r-02	GDC	13-46.10S	115-08.31W	g	COOK16MV
1750	231201	0	MBSR E	Seabeam r-02	GDC	23-53.82S	111-50.18W	g	COOK16MV
*** Digital Magnetics (Earth Total Field) ***									
1942	101101	0	MGDD B	Digital Magnetics	GDC	16-43.77S	141-17.98W	g	COOK16MV
1411	231201	0	MGDD E	Digital Magnetics	GDC	23-18.50S	112-15.40W	g	COOK16MV
*** Digital Gravity ***									
0230	091101	0	GVDD B	Digital Gravity	GDC	17-31.63S	149-35.38W	g	COOK16MV
1833	231201	0	GVDD E	Digital Gravity	GDC	24-00.80S	111-45.19W	g	COOK16MV
*** Integrated Meteorological Acquisition System ***									
0230	091101	0	IMET B	Weather measurements	GDC	17-31.63S	149-35.38W	g	COOK16MV
1100	241201	0	IMET E	Weather measurements	GDC	26-44.52S	109-46.63W	g	COOK16MV
*** Acoustic Doppler Current Profiler ***									
0230	091101	0	ADCP B	300kHz current meas.	GDC	17-31.63S	149-35.38W	g	COOK16MV
1100	241201	0	ADCP E	300kHz current meas.	GDC	26-44.52S	109-46.63W	g	COOK16MV
*** Echo Sounder Records ***									
1658	101101	0	DPR3 B	3.5KHZ R-01	GDC	16-46.35S	141-51.28W	g	COOK16MV
1102	161101	0	DPR3 E	3.5KHZ R-01	GDC	15-15.06S	117-26.22W	g	COOK16MV
1110	161101	0	DPR3 B	3.5KHZ R-02	GDC	15-15.05S	117-26.13W	g	COOK16MV
0745	241101	0	DPR3 E	3.5KHZ R-02	GDC	13-29.96S	115-50.98W	g	COOK16MV
0756	241101	0	DPR3 B	3.5KHZ R-03	GDC	13-30.51S	115-49.52W	g	COOK16MV
2230	021201	0	DPR3 E	3.5KHZ R-03	GDC	14-20.96S	116-09.56W	g	COOK16MV
2235	021201	0	DPR3 B	3.5KHZ R-04	GDC	14-20.15S	116-09.37W	g	COOK16MV
0948	121201	0	DPR3 E	3.5KHZ R-04	GDC	13-57.75S	114-06.50W	g	COOK16MV
0954	121201	0	DPR3 B	3.5KHZ R-05	GDC	13-57.75S	114-06.50W	g	COOK16MV
0445	181201	0	DPR3 E	3.5KHZ R-05	GDC	15-03.08S	116-42.65W	g	COOK16MV
0453	181201	0	DPR3 B	3.5KHZ R-06	GDC	15-03.08S	116-42.66W	g	COOK16MV
1845	231201	0	DPR3 E	3.5KHZ R-06	GDC	24-02.77S	111-43.78W	g	COOK16MV
*** Seismic Refraction ***									
1450	251101	0	SRXX B	REFRACTION LINE	LDEO	12-18.20S	115-42.15W	g	COOK16MV
0006	281101	0	SRXX E	OBS RECORD	LDEO	16-20.44S	116-36.61W	g	COOK16MV
*** Seismic Reflection Records ***									
0756	031201	0	SPRF B	Seismics r-01	GDC	13-47.14S	115-58.92W	g	COOK16MV
1800	031201	0	SPRF E	Seismics r-01	GDC	13-38.89S	115-50.68W	g	COOK16MV

#GMT	DDMMYY	SAMP	B	SAMPLE	DISP			P	CRUISE
#TIME	DATE	TZ	CODE	E IDENTIFIER	CODE	LATITUDE	LONGITUDE	c	LEG-SHIP
#									
*** Wax Cores ***									
1042	161101	0	CORG	CORE16-01	3518M LDEO	15-15.06S	117-26.22W	g	COOK16MV
2245	171101	0	CORG	CORE16-02	3347M LDEO	14-58.50S	116-48.50W	g	COOK16MV
0140	181101	0	CORG	CORE16-03	3129M LDEO	15-07.27S	116-50.60W	g	COOK16MV
1012	181101	0	CORG	CORE16-04	3304M LDEO	15-19.20S	116-52.21W	g	COOK16MV
1433	191101	0	CORG	CORE16-05	3116M LDEO	15-14.30S	116-33.60W	g	COOK16MV
1259	201101	0	CORG	CORE16-06	3176M LDEO	15-23.80S	115-13.85W	g	COOK16MV
0653	211101	0	CORG	CORE16-07	3342M LDEO	15-27.11S	115-14.62W	g	COOK16MV
*** Dredges ***									
2213	151101	0	DRRO	B D16-01	2925M LDEO	14-36.78S	118-56.55W	g	COOK16MV
2323	151101	0	DRRO	E D16-01	2796M LDEO	14-36.78S	118-56.34W	g	COOK16MV
1514	161101	0	DRRO	B D16-02	3049M LDEO	15-13.20S	117-03.00W	g	COOK16MV
1733	161101	0	DRRO	E D16-02	2900M LDEO	15-13.20S	117-02.41W	g	COOK16MV
1815	171101	0	DRRO	B D16-03	3381M LDEO	14-58.20S	116-48.10W	g	COOK16MV
1953	171101	0	DRRO	E D16-03	3191M LDEO	14-58.20S	116-47.65W	g	COOK16MV
0539	181101	0	DRRO	B D16-04	3283M LDEO	15-14.40S	116-54.60W	g	COOK16MV
0712	181101	0	DRRO	E D16-04	3260M LDEO	15-14.39S	116-54.19W	g	COOK16MV
1351	181101	0	DRRO	B D16-05	3341M LDEO	15-17.95S	116-44.28W	g	COOK16MV
1520	181101	0	DRRO	E D16-05	3241M LDEO	15-17.70S	116-44.07W	g	COOK16MV
2258	181101	0	DRRO	B D16-06	3251M LDEO	15-20.68S	117-13.10W	g	COOK16MV
0045	191101	0	DRRO	E D16-06	2916M LDEO	15-20.94S	117-13.00W	g	COOK16MV
0943	191101	0	DRRO	B D16-07	2286M LDEO	15-14.45S	116-45.00W	g	COOK16MV
1133	191101	0	DRRO	E D16-07	2180M LDEO	15-14.10S	116-45.00W	g	COOK16MV
1732	191101	0	DRRO	B D16-08	3463M LDEO	15-13.89S	116-29.06W	g	COOK16MV
1842	191101	0	DRRO	E D16-08	3430M LDEO	15-13.82S	116-28.80W	g	COOK16MV
2335	191101	0	DRRO	B D16-09	3404M LDEO	15-17.80S	116-02.37W	g	COOK16MV
0125	201101	0	DRRO	E D16-09	3236M LDEO	15-17.56S	116-02.07W	g	COOK16MV
0553	201101	0	DRRO	B D16-10	3450M LDEO	15-19.20S	115-47.62W	g	COOK16MV
0733	201101	0	DRRO	E D16-10	3450M LDEO	15-19.20S	115-47.23W	g	COOK16MV
0618	221101	0	DRRO	B D16-11	3448M LDEO	15-13.49S	116-22.70W	g	COOK16MV
0746	221101	0	DRRO	E D16-11	3182M LDEO	15-13.27S	116-22.55W	g	COOK16MV
0535	231101	0	DRRO	B D16-12	3085M LDEO	14-15.10S	116-11.85W	g	COOK16MV
0742	231101	0	DRRO	E D16-12	2782M LDEO	14-15.27S	116-11.43W	g	COOK16MV
0411	241101	0	DRRO	B D16-13	2127M LDEO	13-27.66S	115-57.88W	g	COOK16MV
0546	241101	0	DRRO	E D16-13	1850M LDEO	13-27.45S	115-57.63W	g	COOK16MV
0627	251101	0	DRRO	B D16-14	2389M LDEO	12-36.57S	115-57.97W	g	COOK16MV
0735	251101	0	DRRO	E D16-14	2182M LDEO	12-36.73S	115-57.84W	g	COOK16MV

#GMT	DDMMYY	SAMP	B	SAMPLE	DISP				P	CRUISE
#TIME	DATE	TZ	CODE	E IDENTIFIER	CODE	LATITUDE	LONGITUDE		c	LEG-SHIP
#										
2350	281101	0	DRRO	B D16-15	2921M	LDEO 15-29.15S	116-47.10W	g		COOK16MV
0249	291101	0	DRRO	E D16-15	2722M	LDEO 15-29.15S	116-46.60W	g		COOK16MV
0543	291101	0	DRRO	B D16-16	3315M	LDEO 15-30.53S	116-51.00W	g		COOK16MV
0714	291101	0	DRRO	E D16-16	3280M	LDEO 15-30.38S	116-50.59W	g		COOK16MV
1019	291101	0	DRRO	B D16-17	2883M	LDEO 15-25.79S	116-54.95W	g		COOK16MV
1140	291101	0	DRRO	E D16-17	2636M	LDEO 15-25.71S	116-54.69W	g		COOK16MV
1524	291101	0	DRRO	B D16-18	2938M	LDEO 15-17.70S	117-07.09W	g		COOK16MV
1730	291101	0	DRRO	E D16-18	2880M	LDEO 15-17.70S	117-06.65W	g		COOK16MV
2030	291101	0	DRRO	B D16-19	3126M	LDEO 15-22.95S	117-10.07W	g		COOK16MV
2217	291101	0	DRRO	E D16-19	3075M	LDEO 15-23.18S	117-09.66W	g		COOK16MV
0106	301101	0	DRRO	B D16-20	2868M	LDEO 15-25.45S	117-10.80W	g		COOK16MV
0250	301101	0	DRRO	E D16-20	2657M	LDEO 15-25.18S	117-10.52W	g		COOK16MV
0640	301101	0	DRRO	B D16-21	2522M	LDEO 15-24.19S	117-18.15W	g		COOK16MV
0753	301101	0	DRRO	E D16-21	2190M	LDEO 15-24.30S	117-18.02W	g		COOK16MV
1056	301101	0	DRRO	B D16-22	1963M	LDEO 15-27.82S	117-29.56W	g		COOK16MV
1257	301101	0	DRRO	E D16-22	1706M	LDEO 15-27.74S	117-29.07W	g		COOK16MV
1507	301101	0	DRRO	B D16-23	2280M	LDEO 15-27.80S	117-33.42W	g		COOK16MV
1702	301101	0	DRRO	E D16-23	1760M	LDEO 15-27.68S	117-33.10W	g		COOK16MV
1939	301101	0	DRRO	B D16-24	2800M	LDEO 15-26.53S	117-38.48W	g		COOK16MV
2204	301101	0	DRRO	E D16-24	2883M	LDEO 15-26.66S	117-37.96W	g		COOK16MV
1028	021201	0	DRRO	B D16-25	2819M	LDEO 14-33.11S	115-16.00W	g		COOK16MV
1255	021201	0	DRRO	E D16-25	2359M	LDEO 14-33.39S	115-15.67W	g		COOK16MV
2207	061201	0	DRRO	B D16-26	2857M	LDEO 13-02.13S	115-41.05W	g		COOK16MV
0043	071201	0	DRRO	E D16-26	2427M	LDEO 13-01.88S	115-40.65W	g		COOK16MV
0702	081201	0	DRRO	B D16-27	2191M	LDEO 13-47.30S	113-28.00W	g		COOK16MV
0853	081201	0	DRRO	E D16-27	1945M	LDEO 13-47.01S	113-27.99W	g		COOK16MV
1351	081201	0	DRRO	B D16-28	2810M	LDEO 13-44.33S	113-51.22W	g		COOK16MV
1555	081201	0	DRRO	E D16-28	2460M	LDEO 13-43.92S	113-50.91W	g		COOK16MV
2017	081201	0	DRRO	B D16-29	1604M	LDEO 13-39.71S	114-12.02W	g		COOK16MV
2228	081201	0	DRRO	E D16-29	1224M	LDEO 13-39.45S	114-11.65W	g		COOK16MV
0029	101201	0	DRRO	B D16-30	3171M	LDEO 13-13.71S	117-14.44W	g		COOK16MV
0231	111201	0	DRRO	E D16-30	2868M	LDEO 13-29.23S	115-38.90W	g		COOK16MV
0704	111201	0	DRRO	B D16-31	1465M	LDEO 13-35.40S	115-19.62W	g		COOK16MV
0828	111201	0	DRRO	E D16-31	1206M	LDEO 13-35.67S	115-19.45W	g		COOK16MV
1344	111201	0	DRRO	B D16-32	3001M	LDEO 13-44.62S	114-58.08W	g		COOK16MV
1511	111201	0	DRRO	E D16-32	2930M	LDEO 13-44.40S	114-57.88W	g		COOK16MV
1915	111201	0	DRRO	B D16-33	2755M	LDEO 13-46.97S	114-43.71W	g		COOK16MV
2130	111201	0	DRRO	E D16-33	2330M	LDEO 13-46.73S	114-43.27W	g		COOK16MV
0214	121201	0	DRRO	B D16-34	2075M	LDEO 13-50.13S	114-19.61W	g		COOK16MV
0411	121201	0	DRRO	E D16-34	1808M	LDEO 13-50.37S	114-19.21W	g		COOK16MV
0751	121201	0	DRRO	B D16-35	2880M	LDEO 13-58.06S	114-06.70W	g		COOK16MV
0934	121201	0	DRRO	E D16-35	2588M	LDEO 13-57.75S	114-06.50W	g		COOK16MV

#GMT #TIME #	DDMMYY DATE	TZ	SAMP CODE	B E	SAMPLE IDENTIFIER	DISP CODE	LATITUDE	LONGITUDE	P C	CRUISE LEG-SHIP
1327	121201	0	DRRO	B	D16-36	2836M	LDEO 14-01.69S	113-51.39W	g	COOK16MV
1544	121201	0	DRRO	E	D16-36	2714M	LDEO 14-01.44S	113-50.99W	g	COOK16MV
1431	141201	0	DRRO	B	D16-37	2980M	LDEO 13-55.24S	112-53.65W	g	COOK16MV
1627	141201	0	DRRO	E	D16-37	2686M	LDEO 13-55.14S	112-53.25W	g	COOK16MV
2102	141201	0	DRRO	B	D16-38	2820M	LDEO 13-51.81S	113-12.52W	g	COOK16MV
2252	141201	0	DRRO	E	D16-38	2567M	LDEO 13-51.63S	113-12.20W	g	COOK16MV
0935	151201	0	DRRO	B	D16-39	1792M	LDEO 13-30.88S	114-45.86W	g	COOK16MV
1136	151201	0	DRRO	E	D16-39	1425M	LDEO 13-31.26S	114-45.77W	g	COOK16MV
1316	161201	0	DRRO	B	D16-40	3320M	LDEO 15-23.21S	115-18.93W	g	COOK16MV
1512	161201	0	DRRO	E	D16-40	3188M	LDEO 15-23.44S	115-18.55W	g	COOK16MV
1816	161201	0	DRRO	B	D16-41	3400M	LDEO 15-27.65S	115-15.16W	g	COOK16MV
1954	161201	0	DRRO	E	D16-41	3310M	LDEO 15-27.47S	115-14.83W	g	COOK16MV
1455	181201	0	DRRO	B	D16-42	2690M	LDEO 15-02.82S	117-42.26W	g	COOK16MV
1644	181201	0	DRRO	E	D16-42	2345M	LDEO 15-02.85S	117-42.25W	g	COOK16MV
2216	181201	0	DRRO	B	D16-43	2782M	LDEO 14-54.66S	118-12.00W	g	COOK16MV
0011	191201	0	DRRO	E	D16-43	2412M	LDEO 14-54.66S	118-11.70W	g	COOK16MV
1448	191201	0	DRRO	B	D16-44	3390M	LDEO 15-01.07S	117-27.07W	g	COOK16MV
1659	191201	0	DRRO	E	D16-44	3166M	LDEO 15-01.45S	117-26.92W	g	COOK16MV

*** Ocean Bottom Seismometers ***

1030	231101	0	SBOB	B	VICTAR	LDEO	14-04.04S	116-05.53W	g	COOK16MV
0211	031201	0	SBOB	E	VICTAR	LDEO	14-04.05S	116-05.56W	g	COOK16MV
1411	231101	0	SBOB	B	SALOTE	LDEO	13-46.83S	116-01.21W	g	COOK16MV
0653	031201	0	SBOB	E	SALOTE	LDEO	13-46.79S	116-01.16W	g	COOK16MV
1730	231101	0	SBOB	B	NANCY	LDEO	13-34.98S	115-58.77W	g	COOK16MV
2209	031201	0	SBOB	E	NANCY	LDEO	13-35.00S	115-58.83W	g	COOK16MV
2221	231101	0	SBOB	B	TONY	LDEO	13-29.32S	115-57.67W	g	COOK16MV
0121	041201	0	SBOB	E	TONY	LDEO	13-29.39S	115-57.71W	g	COOK16MV
0135	241101	0	SBOB	B	MAGGIE	LDEO	13-25.29S	115-56.43W	g	COOK16MV
0352	041201	0	SBOB	E	MAGGIE	LDEO	13-25.37S	115-56.56W	g	COOK16MV
1636	241101	0	SBOB	B	ROGER	LDEO	13-20.90S	115-55.61W	g	COOK16MV
0636	041201	0	SBOB	E	ROGER	LDEO	13-20.89S	115-55.71W	g	COOK16MV
1918	241101	0	SBOB	B	ZIDANE	LDEO	13-16.01S	115-54.12W	g	COOK16MV
1046	041201	0	SBOB	E	ZIDANE	LDEO	13-15.89S	115-54.25W	g	COOK16MV
2259	241101	0	SBOB	B	SLICK	LDEO	13-00.01S	115-51.06W	g	COOK16MV
1523	041201	0	SBOB	E	SLICK	LDEO	13-00.06S	115-51.23W	g	COOK16MV
0246	251101	0	SBOB	B	SHRUB	LDEO	12-42.03S	115-47.46W	g	COOK16MV
2006	041201	0	SBOB	E	SHRUB	LDEO	12-42.17S	115-47.96W	g	COOK16MV
1629	211101	0	SBOB	B	UMA	LDEO	15-59.99S	116-31.82W	g	COOK16MV
0533	281101	0	SBOB	E	UMA	LDEO	15-59.98S	116-31.98W	g	COOK16MV

#GMT #TIME #	DDMMYY DATE	TZ	SAMP CODE	B E	SAMPLE IDENTIFIER	DISP CODE	LATITUDE	LONGITUDE	p c	CRUISE LEG-SHIP
2010	211101	0	SBOB	B	HARALD	LDEO	15-42.62S	116-28.30W	g	COOK16MV
1002	281101	0	SBOB	E	HARALD	LDEO	15-42.65S	116-28.60W	g	COOK16MV
2322	211101	0	SBOB	B	BUTTERCUP	LDEO	15-28.80S	116-25.15W	g	COOK16MV
1338	281101	0	SBOB	E	BUTTERCUP	LDEO	15-28.97S	116-25.48W	g	COOK16MV
0236	221101	0	SBOB	B	RON	LDEO	15-16.81S	116-22.25W	g	COOK16MV
1704	281101	0	SBOB	E	RON	LDEO	15-17.00S	116-22.35W	g	COOK16MV
1057	221101	0	SBOB	B	TOM	LDEO	14-58.80S	116-18.02W	g	COOK16MV
1943	011201	0	SBOB	E	TOM	LDEO	14-58.88S	116-18.05W	g	COOK16MV
1442	221101	0	SBOB	B	ELEANOR	LDEO	14-40.22S	116-13.79W	g	COOK16MV
0004	021201	0	SBOB	E	ELEANOR	LDEO	14-40.21S	116-13.96W	g	COOK16MV
1848	221101	0	SBOB	B	XENA	LDEO	14-22.19S	116-09.61W	g	COOK16MV
2157	021201	0	SBOB	E	XENA	LDEO	14-22.14S	116-09.68W	g	COOK16MV
1030	231101	0	SBOB	B	VICTOR	LDEO	14-04.04S	116-05.53W	g	COOK16MV
0211	031201	0	SBOB	E	VICTOR	LDEO	14-04.05S	116-05.56W	g	COOK16MV
1411	231101	0	SBOB	B	SALOTE	LDEO	13-46.83S	116-01.21W	g	COOK16MV
0653	031201	0	SBOB	E	SALOTE	LDEO	13-46.79S	116-01.16W	g	COOK16MV
1730	231101	0	SBOB	B	NANCY	LDEO	13-34.98S	115-58.77W	g	COOK16MV
2209	031201	0	SBOB	E	NANCY	LDEO	13-35.00S	115-58.83W	g	COOK16MV
2221	231101	0	SBOB	B	TONY	LDEO	13-29.32S	115-57.67W	g	COOK16MV
0121	041201	0	SBOB	E	TONY	LDEO	13-29.39S	115-57.71W	g	COOK16MV
0135	241101	0	SBOB	B	MAGGIE	LDEO	13-25.29S	115-56.43W	g	COOK16MV
0352	041201	0	SBOB	E	MAGGIE	LDEO	13-25.37S	115-56.56W	g	COOK16MV
1636	241101	0	SBOB	B	ROGER	LDEO	13-20.90S	115-55.61W	g	COOK16MV
0636	041201	0	SBOB	E	ROGER	LDEO	13-20.89S	115-55.71W	g	COOK16MV
1918	241101	0	SBOB	B	ZIDANE	LDEO	13-16.01S	115-54.12W	g	COOK16MV
1046	041201	0	SBOB	E	ZIDANE	LDEO	13-15.89S	115-54.25W	g	COOK16MV
2259	241101	0	SBOB	B	SLICK	LDEO	13-00.01S	115-51.06W	g	COOK16MV
1523	041201	0	SBOB	E	SLICK	LDEO	13-00.06S	115-51.23W	g	COOK16MV
0246	251101	0	SBOB	B	SHRUB	LDEO	12-42.03S	115-47.46W	g	COOK16MV
2006	041201	0	SBOB	E	SHRUB	LDEO	12-42.17S	115-47.96W	g	COOK16MV
0049	011201	0	SBOB	B	UMA	LDEO	15-38.99S	117-42.00W	g	COOK16MV
1200	241201	0	SBOB	C	UMA	LDEO	26-45.17S	109-46.15W	g	COOK16MV
0728	011201	0	SBOB	B	RON	LDEO	15-41.97S	117-00.05W	g	COOK16MV
1200	241201	0	SBOB	C	RON	LDEO	26-45.17S	109-46.15W	g	COOK16MV
1413	011201	0	SBOB	B	BUTTERCUP	LDEO	15-16.82S	116-22.20W	g	COOK16MV
1200	241201	0	SBOB	C	BUTTERCUP	LDEO	26-45.17S	109-46.15W	g	COOK16MV
2105	021201	0	SBOB	B	HARALD	LDEO	14-22.15S	116-09.40W	g	COOK16MV
1200	241201	0	SBOB	C	HARALD	LDEO	26-45.17S	109-46.15W	g	COOK16MV

#GMT	DDMMYY	SAMP	B	SAMPLE	DISP				p	CRUISE
#TIME	DATE	TZ	CODE	E IDENTIFIER	CODE	LATITUDE	LONGITUDE		c	LEG-SHIP
#										
2112	031201	0	SBOB	B SALOTE	LDEO	13-34.97S	115-58.53W		g	COOK16MV
1200	241201	0	SBOB	C SALOTE	LDEO	26-45.17S	109-46.15W		g	COOK16MV
1424	041201	0	SBOB	B TOM	LDEO	12-59.98S	115-51.32W		g	COOK16MV
1200	241201	0	SBOB	C TOM	LDEO	26-45.17S	109-46.15W		g	COOK16MV
0612	051201	0	SBOB	B NANCY	LDEO	11-44.01S	117-16.51W		g	COOK16MV
1200	241201	0	SBOB	C NANCY	LDEO	26-45.17S	109-46.15W		g	COOK16MV
1015	061201	0	SBOB	B SLICK	LDEO	12-28.97S	116-38.02W		g	COOK16MV
1200	241201	0	SBOB	C SLICK	LDEO	26-45.17S	109-46.15W		g	COOK16MV
0016	091201	0	SBOB	B ROGER	LDEO	13-44.98S	114-16.82W		g	COOK16MV
1200	241201	0	SBOB	C ROGER	LDEO	26-45.17S	109-46.15W		g	COOK16MV
1029	091201	0	SBOB	B MAGGIE	LDEO	13-48.02S	115-07.22W		g	COOK16MV
1200	241201	0	SBOB	C MAGGIE	LDEO	26-45.17S	109-46.15W		g	COOK16MV

*** Expendable Bathythermographs ***

0504	091101	0	BTXP	MK21	# 2	Fast_Deep	GDC	17-25.71S	149-06.95W	g	COOK16MV
0402	101101	0	BTXP	MK21	# 3	Fast_Deep	GDC	16-59.80S	144-30.14W	g	COOK16MV
0257	111101	0	BTXP	MK21	# 4	Fast_Deep	GDC	16-37.10S	139-52.25W	g	COOK16MV
0323	121101	0	BTXP	MK21	# 5	Fast_Deep	GDC	16-13.75S	134-52.31W	g	COOK16MV
0235	131101	0	BTXP	MK21	# 6	Fast_Deep	GDC	15-28.81S	130-25.78W	g	COOK16MV
0358	141101	0	BTXP	MK21	# 9	Fast_Deep	GDC	15-06.25S	126-46.62W	g	COOK16MV
0134	151101	0	BTXP	MK21	# 10	Fast_Deep	GDC	14-47.52S	122-33.77W	g	COOK16MV
0151	151101	0	BTXP	MK21	# 11	Fast_Deep	GDC	14-47.29S	122-30.69W	g	COOK16MV
0147	161101	0	BTXP	MK21	# 12	Fast_Deep	GDC	14-41.23S	118-46.06W	g	COOK16MV
0008	181101	0	BTXP	MK21	# 13	Fast_Deep	GDC	15-01.33S	116-49.07W	g	COOK16MV
0217	191101	0	BTXP	MK21	# 18	Fast_Deep	GDC	15-18.49S	117-13.19W	g	COOK16MV
2026	221101	0	BTXP	MK21	# 19	Fast_Deep	GDC	14-19.57S	116-09.07W	g	COOK16MV
2327	301101	0	BTXP	MK21	# 20	Fast_Deep	GDC	15-27.65S	117-37.95W	g	COOK16MV
2016	041201	0	BTXP	MK21	# 21	Fast_Deep	GDC	12-42.01S	115-47.65W	g	COOK16MV
0123	061201	0	BTXP	MK21	# 27	Fast_Deep	GDC	13-13.87S	116-59.08W	g	COOK16MV
0357	111201	0	BTXP	MK21	# 31	Fast_Deep	GDC	13-29.93S	115-38.21W	g	COOK16MV
0003	151201	0	BTXP	MK21	# 32	Fast_Deep	GDC	13-51.12S	113-12.65W	g	COOK16MV
0116	191201	0	BTXP	MK21	# 33	Fast_Deep	GDC	14-54.80S	118-11.30W	g	COOK16MV
1924	221201	0	BTXP	MK21	# 34	Fast_Deep	GDC	20-15.97S	114-24.02W	g	COOK16MV

End Sample Index

COOK16MV