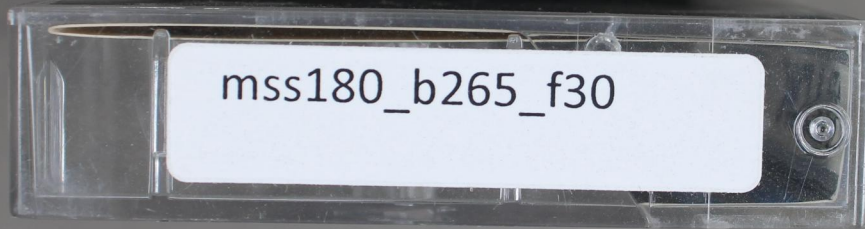
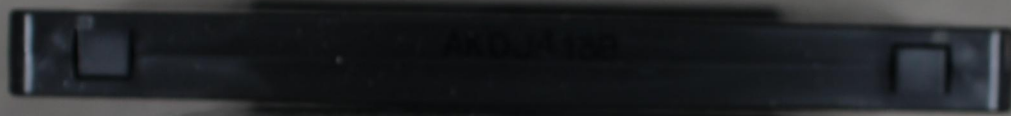


LABORATORY STANDARD CASSETTE MECHANISM

Each element of the Laboratory Standard Cassette Mechanism is designed for optimum tape transport and running performance. Mirror image shell halves, bubble surface liner sheets, and a new dual spring pressure pad maximize tape to head contact. Exact A/B side response is achieved through tapered and flanged seamless guide rollers, along with perfectly circular double clamp and hub assemblies.

Printed in Japan



mss180_b265_f30