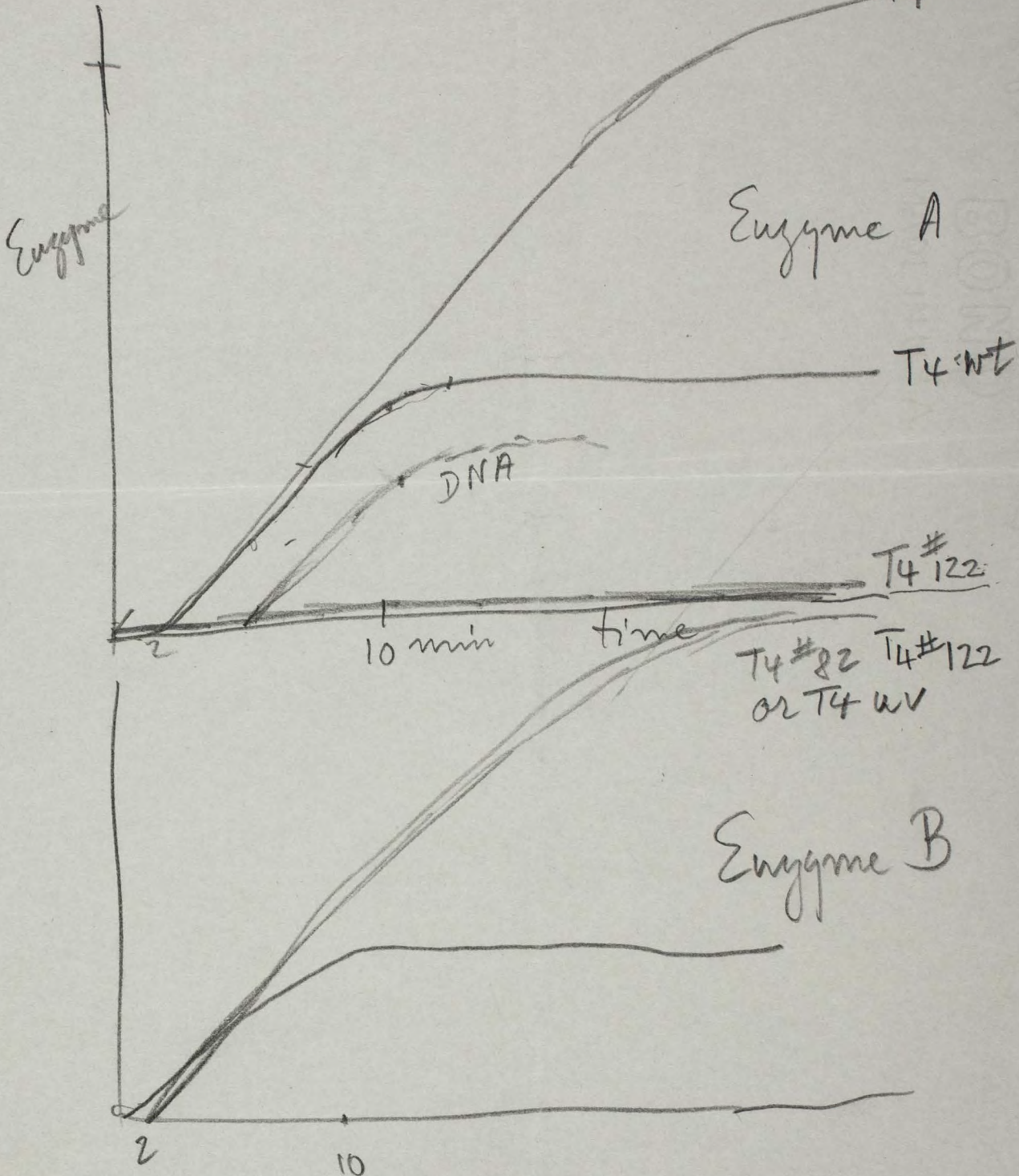


HOTEL  
DUPONT  
PLAZA

DUPONT CIRCLE AND NEW HAMPSHIRE AVENUE N. W., WASHINGTON 6, D. C.

TELEPHONE  
HUDSON 3-6000

T4 #82



HOTEL  
DUPONT  
PLAZA

DUPONT CIRCLE AND NEW HAMPSHIRE AVENUE N. W., WASHINGTON 6, D. C.

TELEPHONE  
HUDSON 3-6000

B

Ph

$i^+ z^+$

$i^- z^+$

like case 2

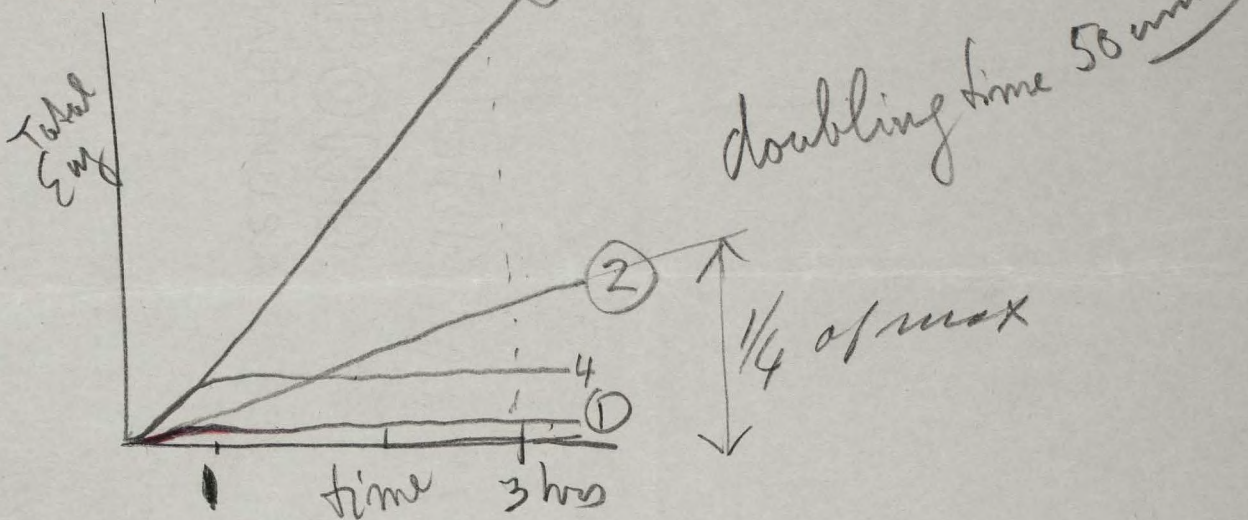
compare with (2)

HOTEL  
DUPONT  
PLAZA

DUPONT CIRCLE AND NEW HAMPSHIRE AVENUE N. W., WASHINGTON 6, D. C.

TELEPHONE  
HUDSON 3-6000

Bacterium	Phage	Place
i <sup>+</sup> z <sup>-</sup>	i <sup>+</sup> z <sup>+</sup>	①
i <sup>+</sup> z <sup>-</sup>	i <sup>-</sup> z <sup>+</sup>	②
i <sup>+</sup> z <sup>-</sup>	i <sup>-</sup> z <sup>+</sup>	③
i <sup>-</sup> z <sup>-</sup>	i <sup>-</sup> z <sup>+</sup>	④
i <sup>-</sup> z <sup>-</sup>	i <sup>+</sup> z <sup>+</sup>	③

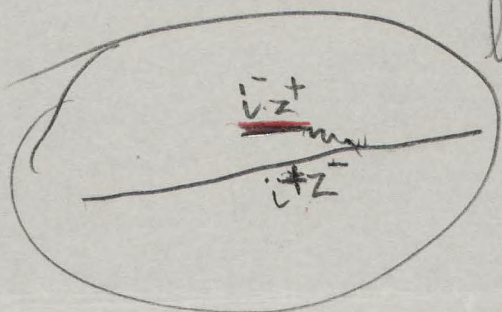
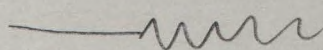
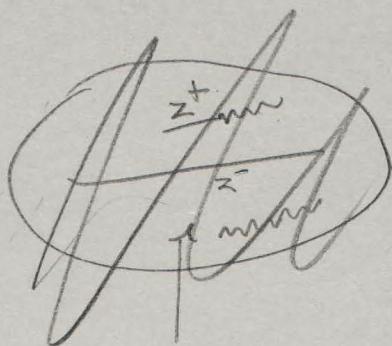


5 to 10%  
phage under ②<sup>+</sup>

HOTEL  
DUPONT  
PLAZA

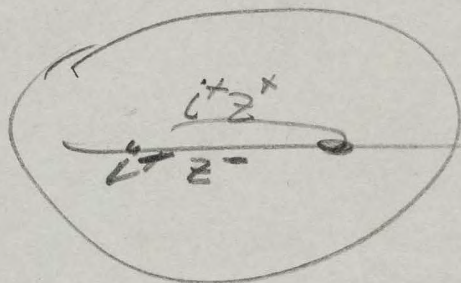
DUPONT CIRCLE AND NEW HAMPSHIRE AVENUE N. W., WASHINGTON 6, D. C.

TELEPHONE  
HUDSON 3-6000



$lac^-$  isogenic for  $P1 lac^+$   
fully repressed

not near



+UV is  
longely; derepressed



NE # 240

5:30 - 7:12

please call him  
will call again

THE

Statler



Hilton

SWIN 50189

Frochman  
Finley  
Bank

Rot



WE INVITE YOU TO THESE FINE STATLER HILTON RESTAURANTS  
for your enjoyment and convenience

CAFE  
ROUGE

TERRACE  
ROOM

COFFEE  
SHOP

Fuller-Hill  
Inland Kennel  
Princeton

De 2-5563

2877

Observe the

~~Sheet~~

NO

Re 7-2500

Sum



1416 - 35 sheet

Cybil Sum

TL 8-0356