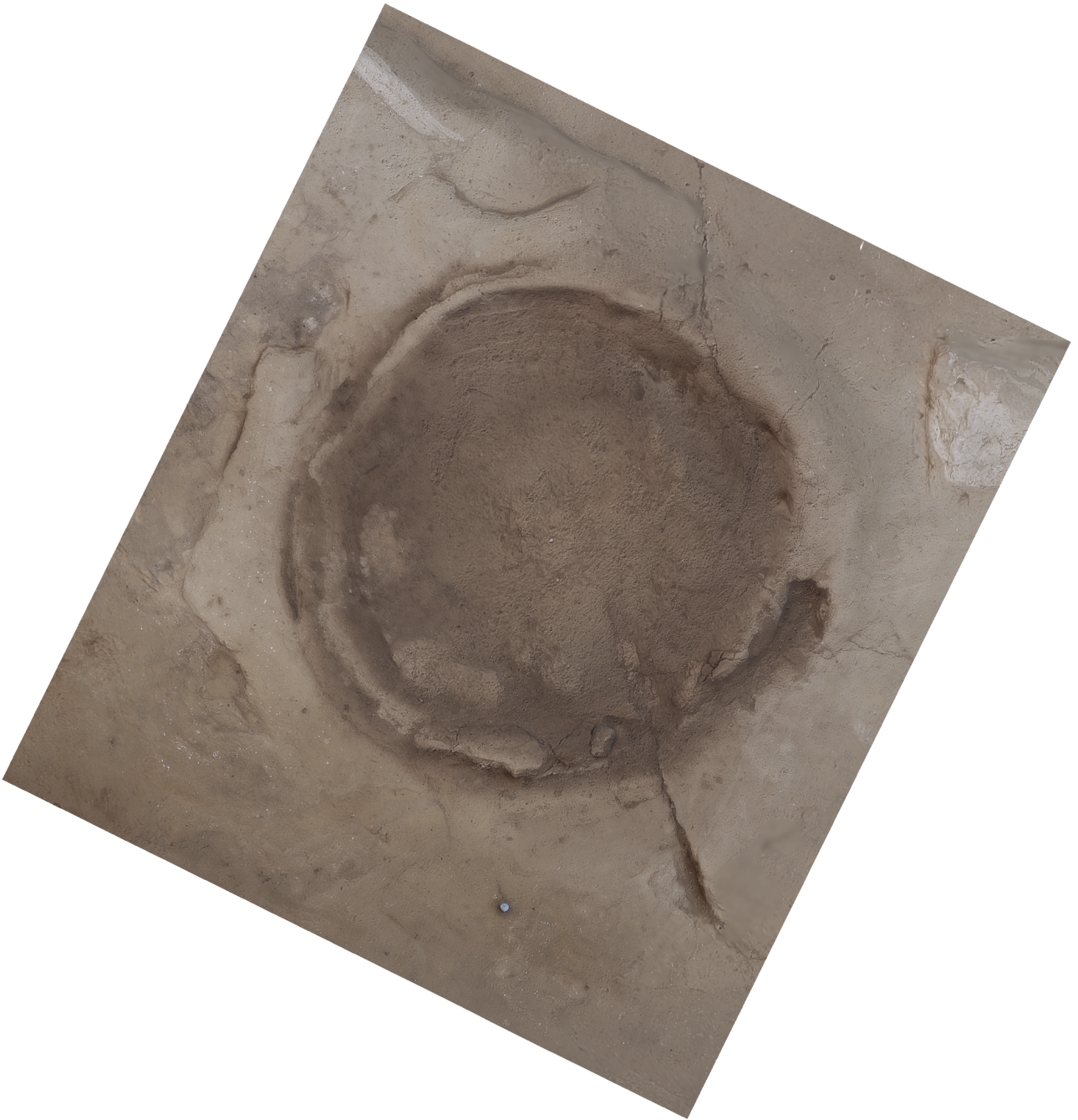


Agisoft PhotoScan

Processing Report
01 November 2014



Survey Data

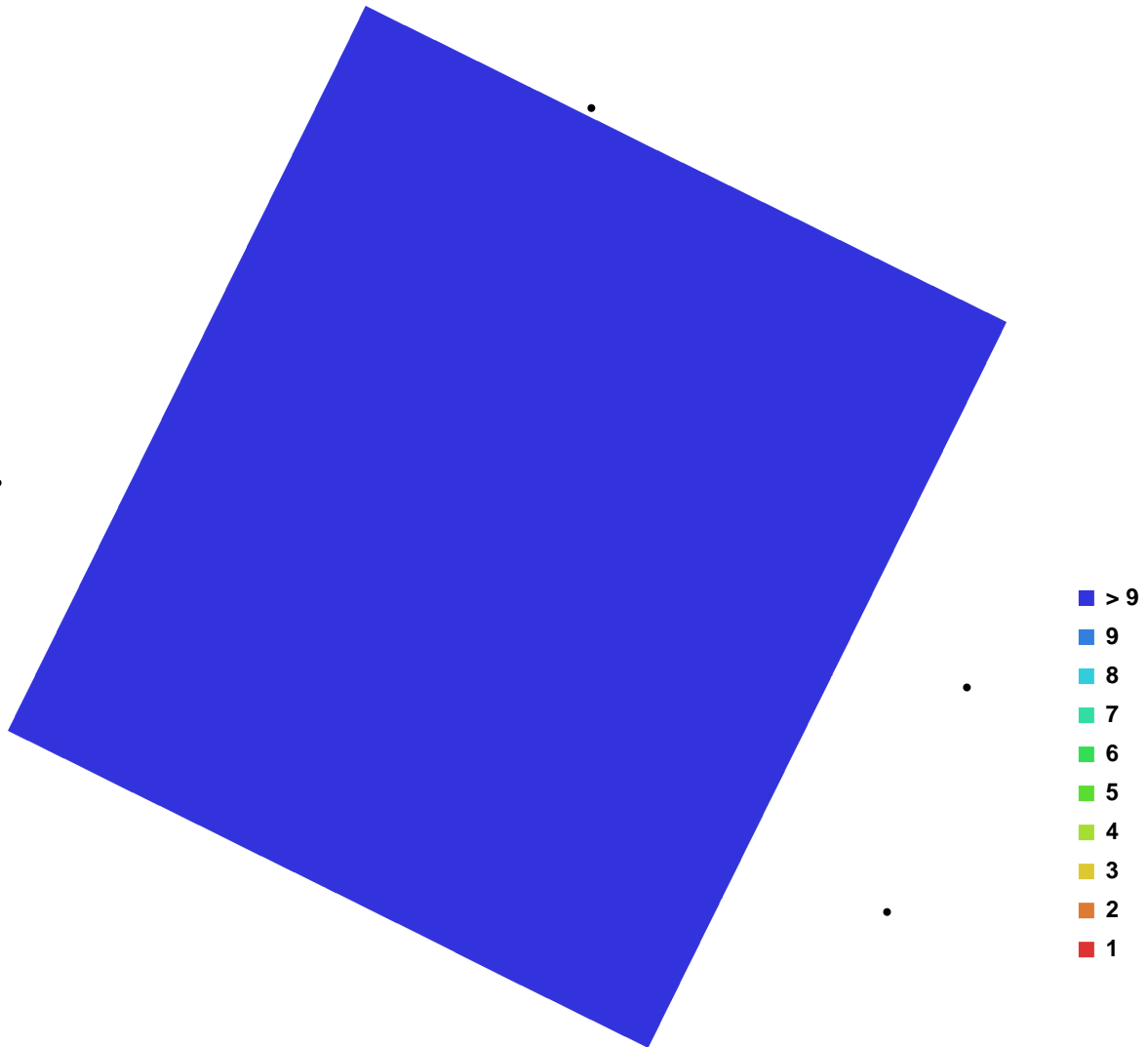


Fig. 1. Camera locations and image overlap.

Number of images:	27	Camera stations:	27
Flying altitude:	2.12396 m	Tie-points:	79896
Ground resolution:	0.000329851 m/pix	Projections:	204171
Coverage area:	9.82834e-007 sq km	Error:	0.784079 pix

Camera Model	Resolution	Focal Length	Pixel Size	Precalibrated
Canon EOS M (22 mm)	5184 x 3456	22 mm	4.384 x 4.384 um	No

Table. 1. Cameras.

Digital Elevation Model

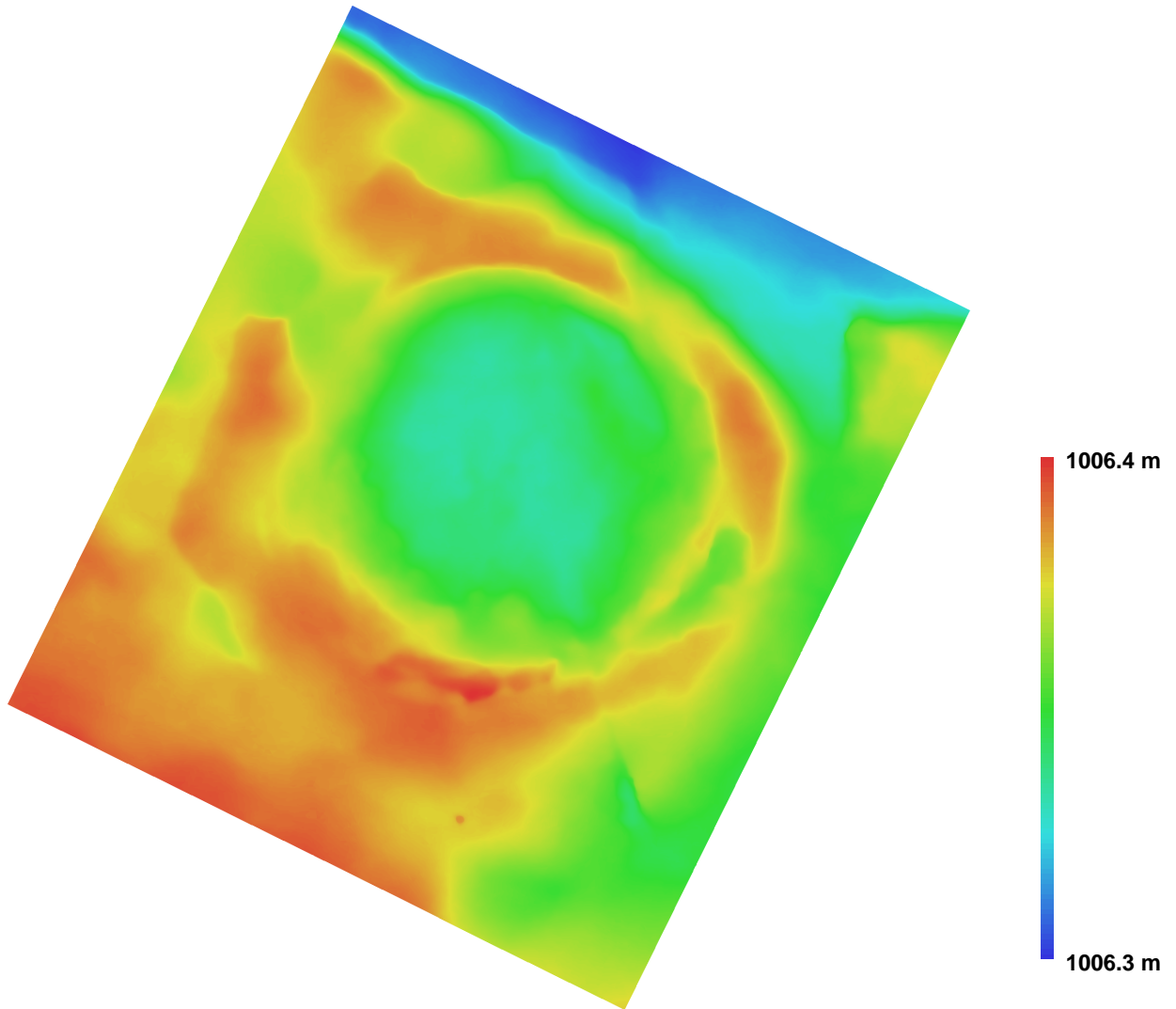


Fig. 2. Reconstructed digital elevation model.

Resolution: 0.0013194 m/pix
Point density: 574439 points per sq m