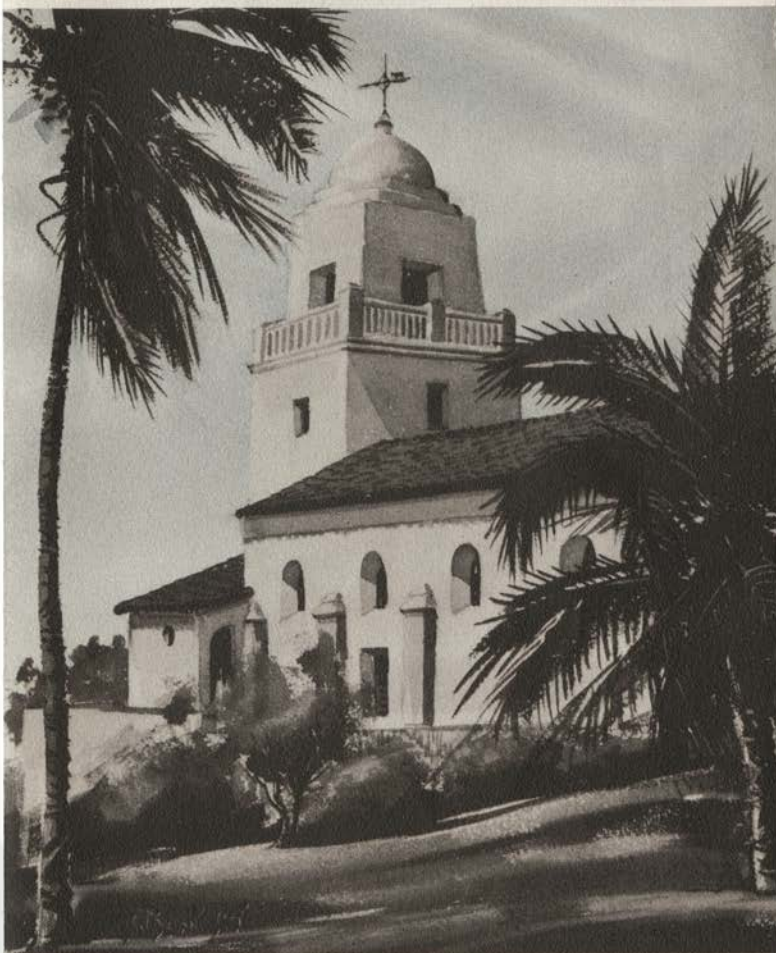


Welcome to **OLD**
SAN DIEGO

BIRTHPLACE OF CALIFORNIA 1769



COURTESY OF

Manuel's

FAMOUS HISTORICAL RESTAURANTÉ
California's Historical Landmark #70
2616 SAN DIEGO AVE. • CY 5-9101

CASA DE PEDRORENA

Manuel's

San Diego's First and Only
HISTORICAL RESTAURANTÉ
Open 11:00 A.M. — 10 P.M. Daily



FINEST

Spanish—Mexican and American Cuisine

Wines

Cocktails

Beer

INTERESTING FACTS ABOUT

Manuel's

HISTORICAL RESTAURANTÉ IN THE

CASA DE PEDRORENA

1. Built 1838 by Don Miguel De Pedrorena, a Spanish Don, graduate of Oxford and Madrid Universities.
2. Building is the original structure except where partitions were removed and rest-rooms added.
3. Walls are of solid adobe 24 inches thick.
4. Roof is the first frame peak roof built on an adobe home in Calif.
5. The indoor dining room originally consisted of a central hallway with four rooms opening off it. The large exposed ceiling beams outline the original hallway. Partitions were removed to form the present dining room.
6. The window frames were brought from Spain around Cape Horn in a sailing ship.
7. Rain spouts are hollowed out of a single piece of solid wood.
8. The Spanish cannon, El Jupiter, was found in the patio and was donated to the Ft. Stockton Museum where it may be seen.
9. The building is one of the first six adobe homes built in Calif.
10. Manuel's is located between the Casa De Estudillo (Ramona's Marriage Place) and the Casa De Altamirana (the first frame house in San Diego and the home of the first publishing of the San Diego Union newspaper).
11. The historic patio containing many rare and lovely plants, sheltered by high adobe walls, is conducive to pleasant dining in romantic old world atmosphere throughout most of the year.
12. Richard Henry Dana, General Fremont, Commodore Stockton and many other important persons were frequent guests here.

affiliated with
San Diego Tourist & Convention Bureau
and San Diego County Historical Association

**FEATURED IN "FORD TIMES"
FAMOUS RESTAURANTS, AND IN
HOLIDAY MAGAZINE**

A TOURIST MUST!!!

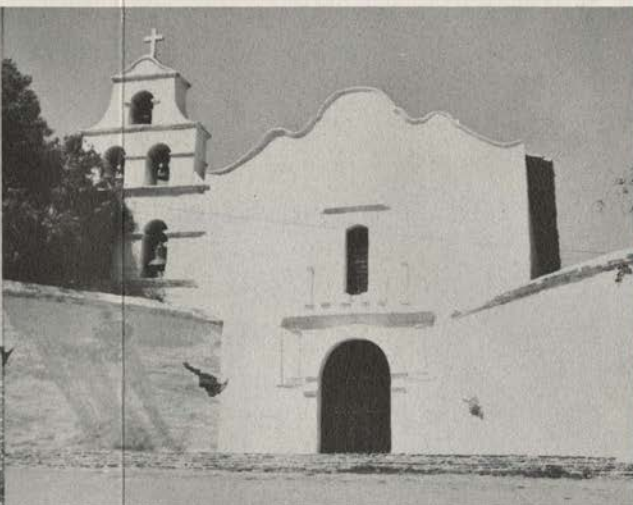
A Photographer's Paradise

HISTORICAL
LANDMARKS
OF

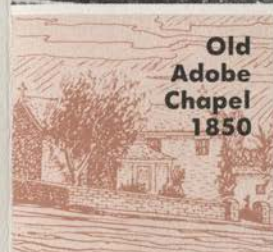
OLD SAN DIEGO—



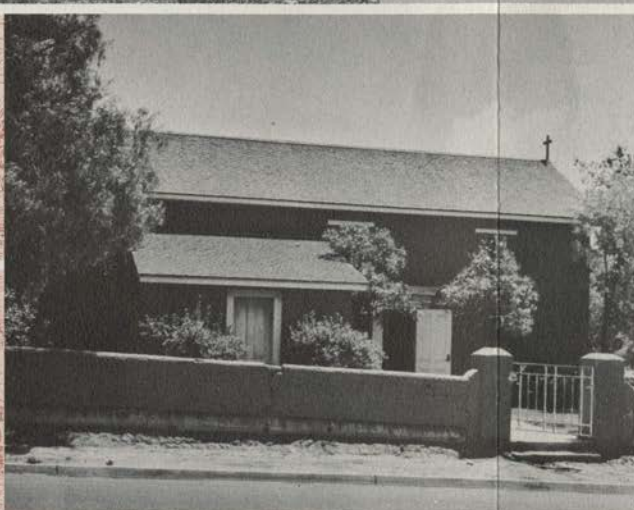
Cabrillo
National
Monument
1542



Mission
San
Diego
de Alcalá
1769



Old
Adobe
Chapel
1850



Casa de
Bandini
1829



Plaza and
Ramona's
Marriage
Place
1823



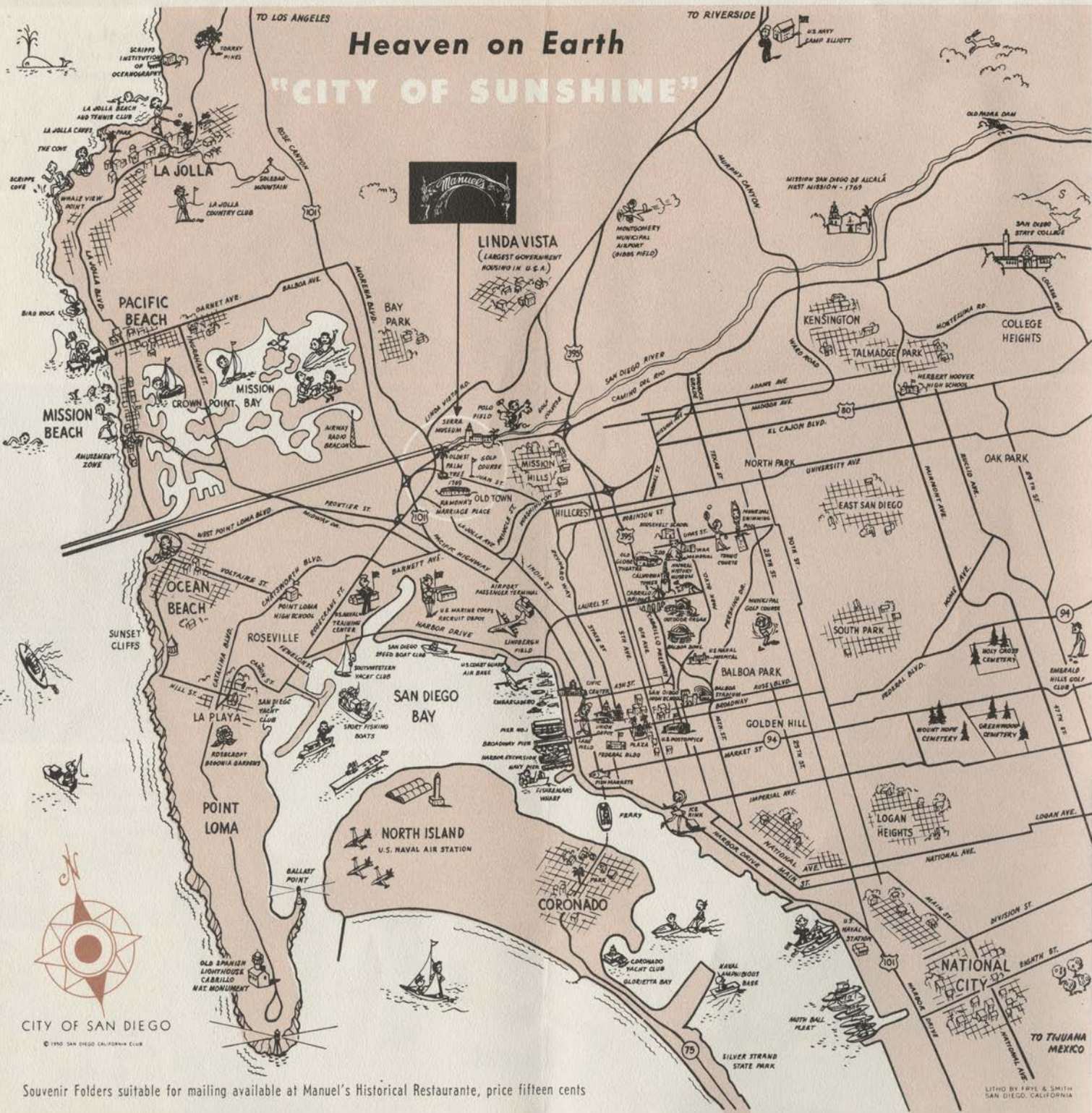
Casa
de Carrillo
1820

Your

TOURIST MAP OF SAN DIEGO

Heaven on Earth

"CITY OF SUNSHINE"



CITY OF SAN DIEGO

© 1940 SAN DIEGO CALIFORNIA CLUB

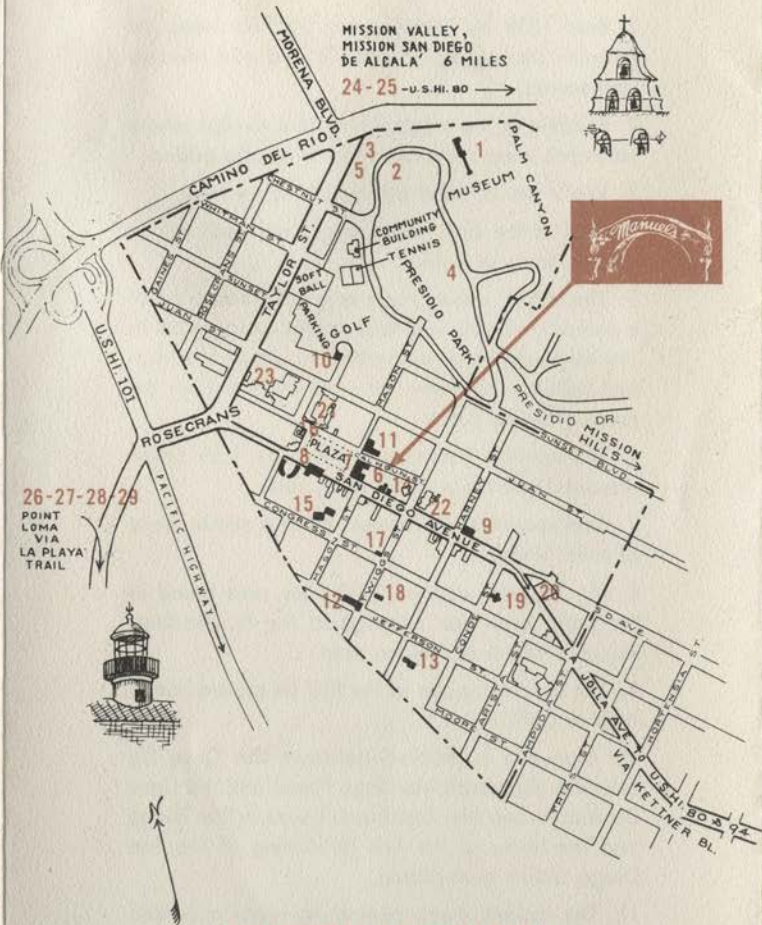
Souvenir Folders suitable for mailing available at Manuel's Historical Restaurante, price fifteen cents

LITHO BY FRYE & SMITH SAN DIEGO, CALIFORNIA

7931
6-

Tourist Map of

OLD SAN DIEGO



HISTORICAL LANDMARKS

PRESIDIO PARK

1. Serra Museum
2. Junipero Serra Cross
3. Presidio Ruins
4. Fort Stockton
5. Franciscan Gardens

OLD TOWN

6. Casa de Pedrorena
7. Casa de Estudillo (Ramona's)
8. Casa de Machado
9. Whaley House
10. Casa de Carrillo
11. Casa de Bandini
12. Casa de Lopez
13. Pendleton House
14. Casa de Altamirana

15. Casa de Stewart

16. Site of Masonic Hill
17. Site of Casa de Cota
18. Emmett House
19. Old Adobe Chapel
20. El Campo Santo
21. Casa de Pico

ADDITIONAL HISTORICAL POINTS

22. Church
23. Olive Factory
24. Mission San Diego de Alcala
25. First Dam in California
26. Cabrillo National Monument
27. Portuguese Chapel
28. Ballast Point
29. La Playa Trail