

*REPORT AND INDEX OF
UNDERWAY MARINE GEOPHYSICAL DATA*

KIWI EXPEDITION

LEG 14

(KIWI14RR)

R/V Revelle

(Issued January 1999)

Ports:

Honolulu, Hawaii (9 July 1998)

to

Honolulu, Hawaii (11 July 1998)

Chief Scientist:

Christian deMoustier, Scripps Institution
email: cdemoustier@ucsd.edu

No Resident Marine Technician on board

Computer Technician - Jim Charters

Post-Cruise Processing and Report Preparation by the
Geological Data Center, Scripps Institution of Oceanography
La Jolla, California 92093-0223

NOTE: *This is an index of underway geophysical data edited and processed after the completion of the cruise leg and is intended primarily for informal use within the institution. This document is not to be reproduced or distributed outside Scripps without prior approval of the chief scientist or the Geological Data Center, Scripps Institution of Oceanography, La Jolla, California 92093-0223*

GDC Cruise I.D.# 276

**REPORT AND INDEX OF NAVIGATION
AND UNDERWAY GEOPHYSICAL DATA**

Processed by the Geological Data Center
Scripps Institution of Oceanography

Contents:

Index Chart - gives track of cruise leg, dates, ports, and mileage of each type of data collected.

Track Charts - annotated with dates and hour ticks.

Profiles - depth, magnetic and gravity free air anomaly vs. distance. (Sections of track with seismic reflection data have a wide black line along the bottom of the profile.)

Sample Index - list of begin/end times and positions of all underway records as well as samples and measurements from other disciplines collected on the leg.

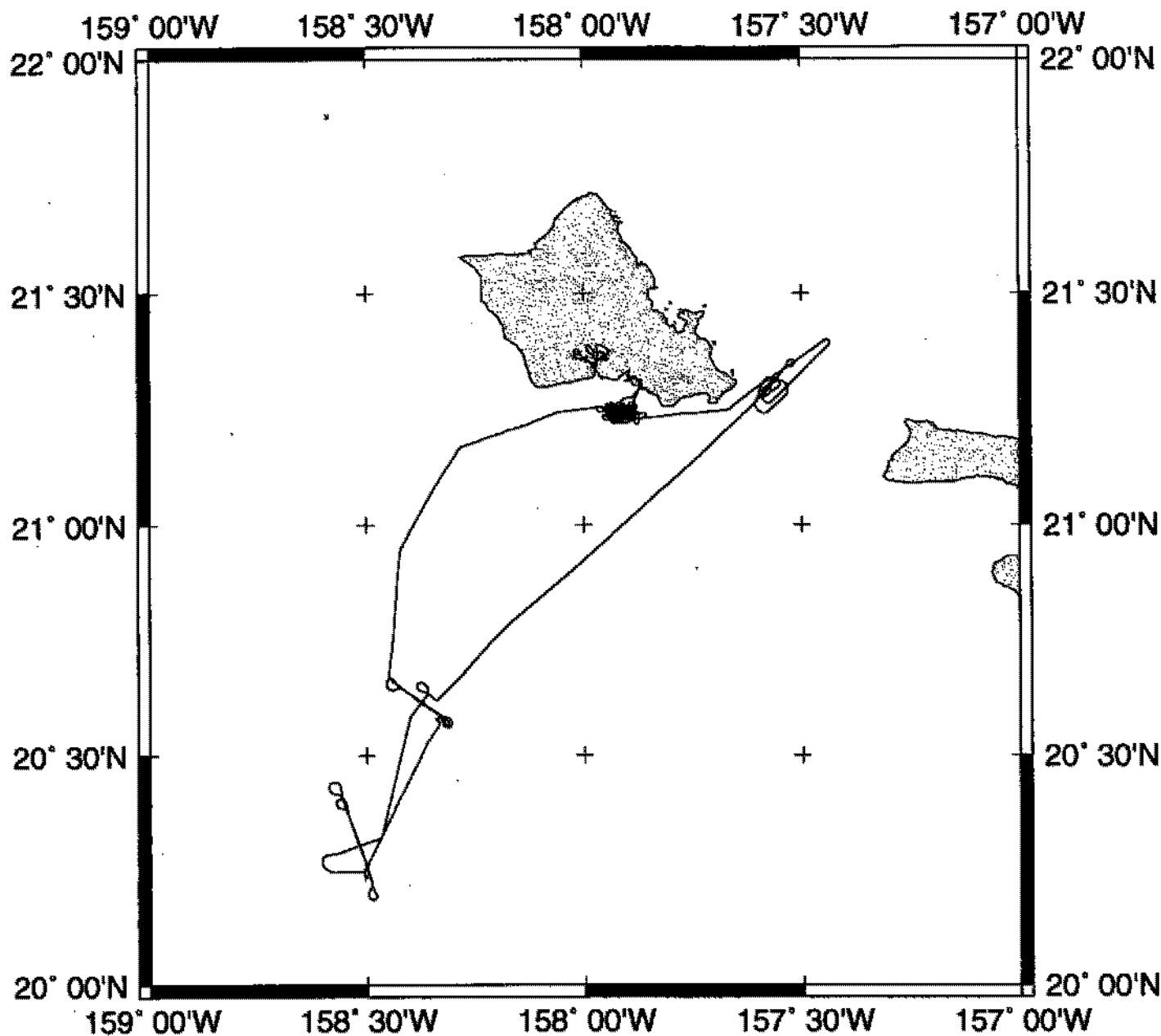
NOTE: One or more of the underway data types may not be collected on a given leg. For information on the availability and reproduction costs of data in the following forms, contact S.M. Smith, Curator, Geological Data Center, Scripps Institution of Oceanography, La Jolla, California 92093-0223. Phone: (619)534-2752, FAX: (619)534-6500, Internet email: ssmith@ucsd.edu

1. Files via ftp or on 8mm (Exabyte) and 4mm (DAT) magnetic tape:
 - a) Separate time series ASCII files of navigation, single beam depth, gravity and magnetics.
 - b) Above data in a single merged ASCII file in the MGD77 Exchange Format.
 - c) SeaBeam depth data (binary, Sun byte order)
 - d) SeaBeam Sidescan data.

2. Microfilm (35 mm flowfilm) or hard copies of:
 - a) Underway watch log book.
 - b) SeaBeam vertical beam profile/Sidescan records.
 - c) 3.5 kHz and 12 kHz echosounder records.
 - d) Seismic reflection profiler records.

3. Navigation listing with times and positions of fixes and course and speed changes.

4. Custom plots in Mercator projection:
 - a) Track plots.
 - b) SeaBeam depth contour plots.
 - c) Depth, magnetic or gravity values printed or profiled along track.



KIWI EXPEDITION LEG 14 (KIWI14RR)

CHIEF SCIENTIST: Christian deMoustier, Scripps Institution

PORTS: Honolulu - Honolulu, Hawaii

DATES: 09 - 11 July 1998

SHIP: R/V Revelle

TOTAL MILEAGE OF UNDERWAY DATA COLLECTED

Cruise - 453 miles

Magnetics - none collected

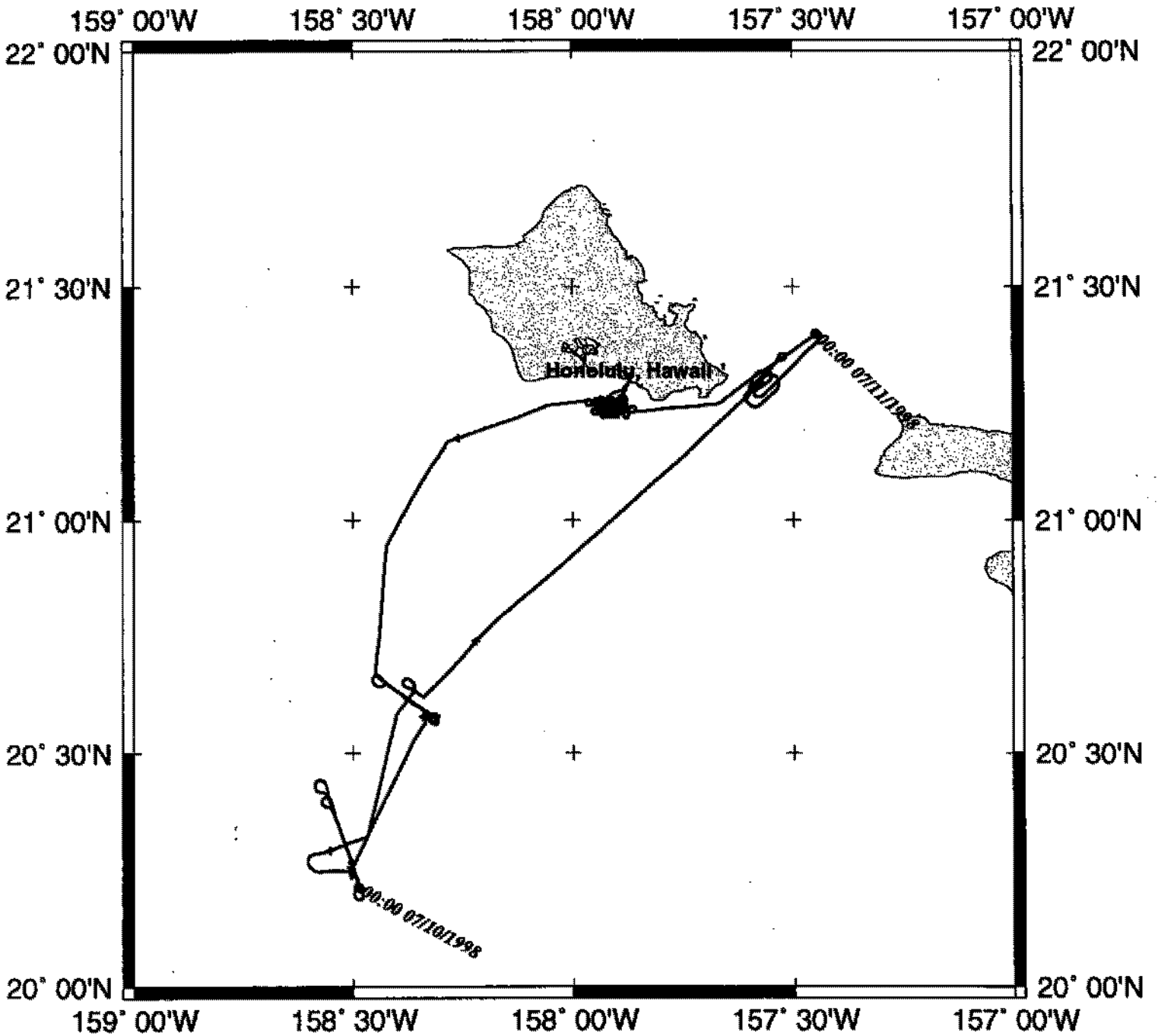
Bathymetry - 266 miles

Seismic Reflection - none collected

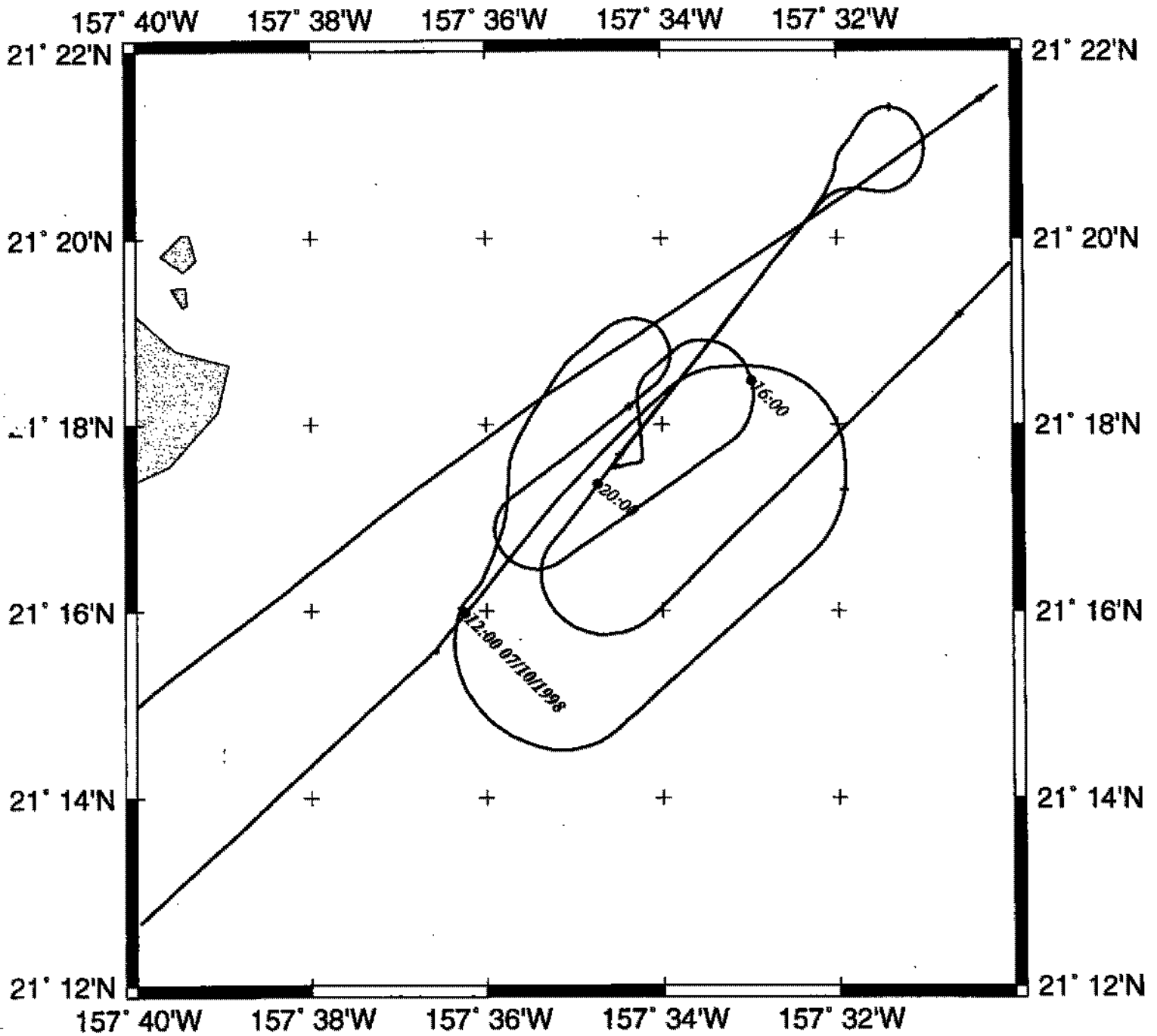
Sea Beam - 266 miles

Gravity - none collected

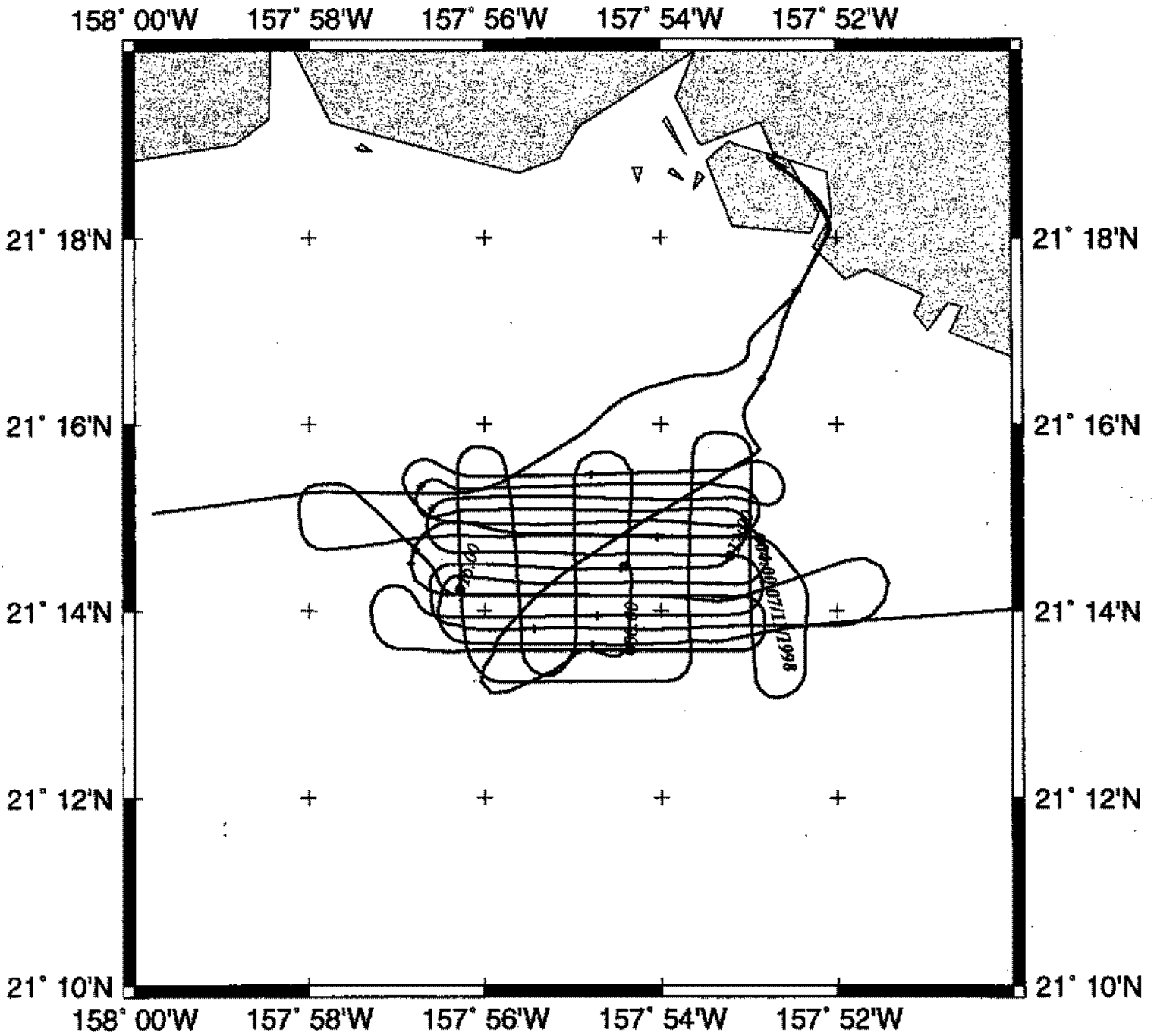
KIWI14RR Track

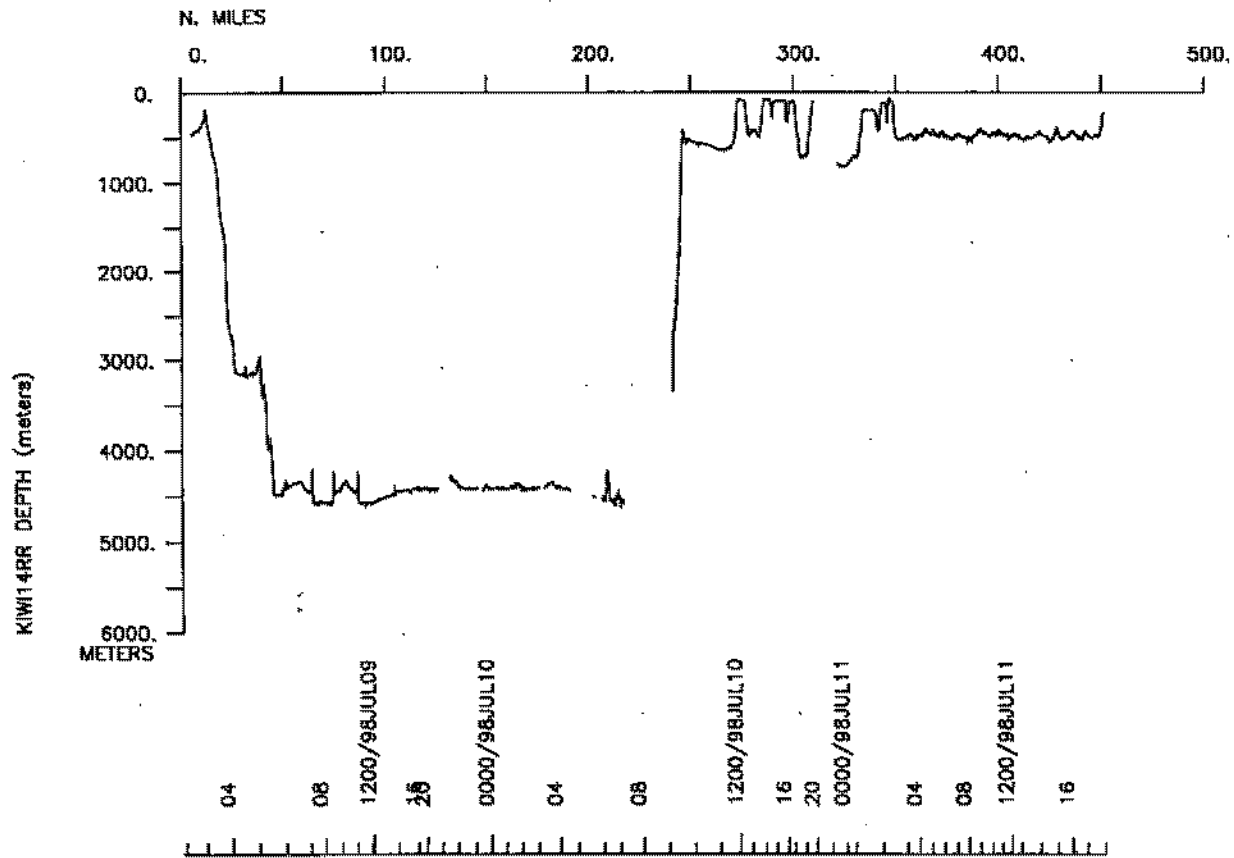
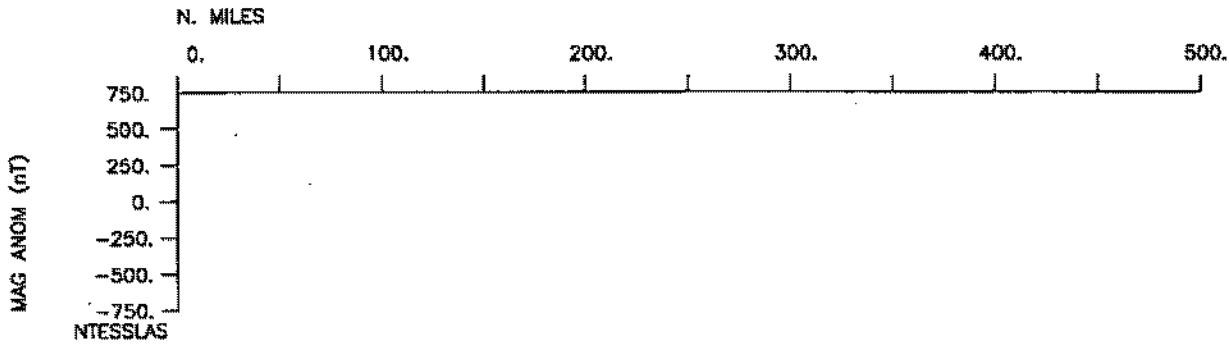
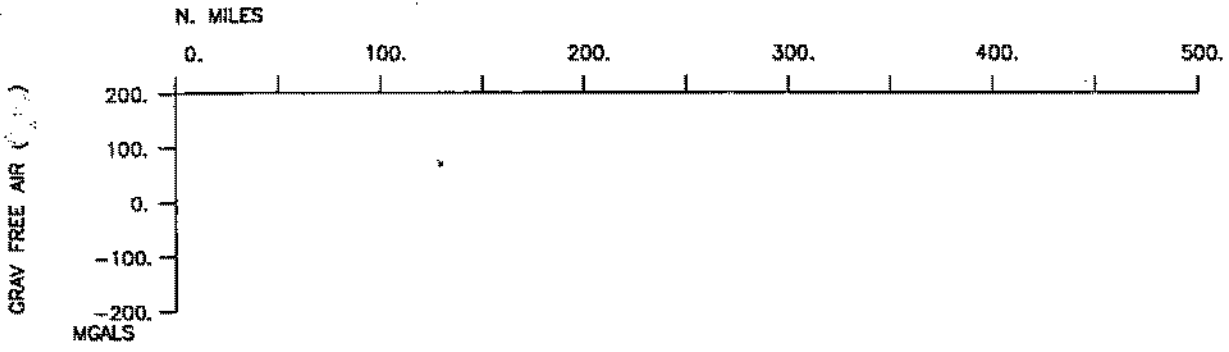


KIWI14RR Survey 1



KIWI14RR Survey 2





S.I.O. SAMPLE INDEX

KIWI EXPEDITION

LEG 14

(KIWI14RR)

R/V Revelle

(Issued January 1999)

Ports:

Honolulu, Hawaii (9 July 1998)

to

Honolulu, Hawaii (11 July 1998)

Chief Scientist:

Christian deMoustier, Scripps Institution

The Sample Index is a first level interdisciplinary listing of time, position, sample identification and disposition of all samples, records and measurements collected on this cruise leg. The index data are encoded at sea by the resident marine technician and processed on shore by the S.I.O. Geological Data Center shortly after the completion of the cruise leg.

Positions are interpolated on the basis of sample time by comparison to a single, edited navigation file. Samples beginning at one time and position and ending at another are entered on two consecutive lines. Disposition and sample type are represented by three and four character codes to permit future computer searches on these parameters. (Listings defining these codes are available from the Geological Data Center.)

GDC Cruise I.D.# 276

