

**IMPERIAL VALLEY
BUTTER**



**7,000,000 POUNDS
SHIPPED ANNUALLY**



Imperial Valley

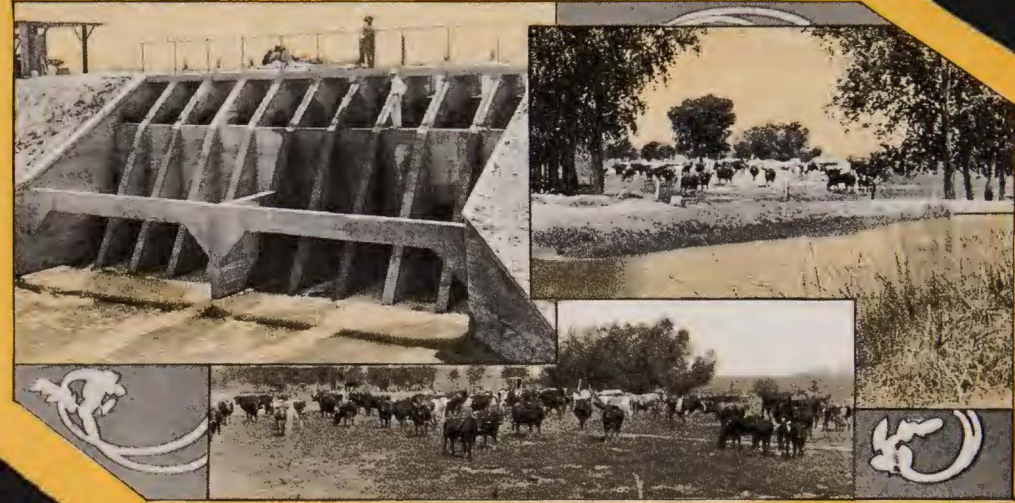
“The Hollow of God’s Hand”



There is not another farming district in America like Imperial Valley, "The Hollow of God's Hand." Picture a great fertile basin lying below sea level, surrounded by the Ancient Beach Line, inclosing hundreds of thousands of acres of the most productive land in the world. The ingenuity and courage of man overcoming almost unsurmountable obstacles has carved out the greatest irrigation system in America. The land is a sedimentary soil richly laden with the fertilizing silt of the Colorado River that furnishes the water supply.

Imperial Valley, the baby county of California, is the greatest butter producing county in the state, shipping over 7,000,000 pounds annually. It has the lowest death rate in the world averaging 3.5 per thousand. The growing season is 365 days a year. There are 300,000 acres under a high state of cultivation with 523,000 acres under the canal system. With an extended canal system 1,500,000 more acres will be put under cultivation. It serves the United States with the first Celery, Asparagus and Cantaloupes of the season. The citrus industry is just coming into its own. 26,000 Grape Fruit trees were planted this spring. No county produces more Alfalfa per acre than Imperial Valley. Hog raising, Dairying and the Cattle industry offer tremendous returns on the investment. The average production for cotton is 500 pounds per acre. Pioneer days have passed. Thriving towns dot the Valley. They have all the modern utilities and conveniences. The county is penetrated through the heart by the Southern





National Highway. The schools are a pride. The libraries, churches and social life generally are on a very high plane. Imperial Valley is achieving her destiny.

IMPERIAL VALLEY IN TABLOID

1902—Assessed Land Values.....	Nothing.
1909— " " ".....	9 Millions
1915— " " ".....	27 "

1900—No land under irrigation.
 1909—Under Irrigation, 180,000 acres.
 1915— " 300,000 "
 1915— " Canal System, 523,000 "
 1902—Population, 50.
 1915— " 50,000.

Additional area of land subject to irrigation, 1,500,000 acres.
 No Winters—No Snow—No Crop Failures.
 The earliest and longest growing season in the world.





Sp. 5011
A
F
I
1915

CHAMBERS OF COMMERCE

For authentic and reliable information concerning conditions generally relative to the Valley, address,

Imperial Valley Chamber of Commerce, El Centro, Cal.

Business Mens Club, Holtville.

Farmers and Merchants Club, Calexico,

Farmers and Merchants Club, Seeley,

Commercial Club, Heber,

Chamber of Commerce, Imperial,

Chamber of Commerce, Niland,

Chamber of Commerce, Calipatria,

Chamber of Commerce, El Centro.

Chamber of Commerce, Brawley.

65
COMPLIMENTS OF IMPERIAL VALLEY
"THE HOLLOW OF GOD'S HAND"

ONE CENT STAMP
HERE

15-203
9