



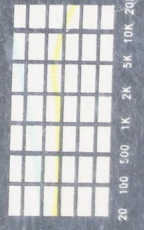
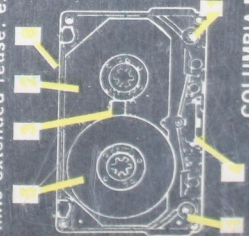
This premium quality cassette, engineered by COLUMBIA MAGNETICS establishes new standards for trouble free, professional recordings. All Columbia full-feature cassettes contain:

1. Steel pins and Delrin rollers.
2. Graphite impregnated mylar slip sheets.
3. Sealed plastic dustproof windows.
4. Constant tension pressure pads encapsulated in a mumental tape shield.
5. Special formulation low noise, extended range, calendared gamma ferric oxide tape.
6. High temperature plastic shells.

Each cartridge meets or exceeds all Norelco/Philips specifications. Made and assembled in U.S.A.

Frequency Response: 20-20,000 HZ/Wow & Flutter \leq .25%

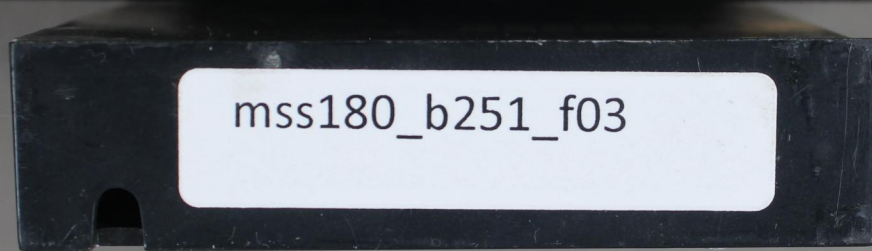
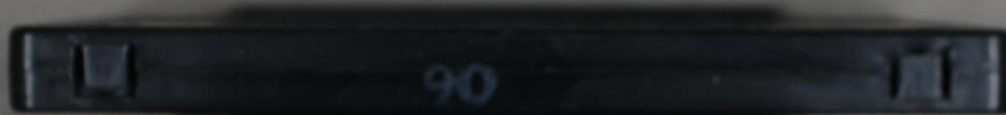
The exceptional long life of this cassette permits extended reuse; extra labels are provided.



COLUMBIA MAGNETICS
A product of Columbia Records
A Division of Columbia Broadcasting System, Inc.
Danbury, Conn.

© Columbia





mss180_b251_f03