

*Report and Index of
Underway Marine Geophysical Data*

Tui Malila

Leg 03

(TUIM03MV)

R/V Melville

(Issued May 2005)

Ports:

Papeete, Tahiti (09-Feb-2005)

to

Papeete, Tahiti (21-Mar-2005)

Chief Scientist: Mitch Lyle
Boise State University
mlyle@cgiss.boisestate.edu

Computer Tech - Geoff Davis
Resident Tech - Gene Pillard

Post-Cruise processing and report preparation by the
Shipboard Technical Support Group,
Scripps Institution of Oceanography
La Jolla, CA 92093-0223

Note: *This is an index of underway geophysical data edited and processed after the completion of the leg and is intended primarily for informal use within the institution. This document is not to be reproduced or distributed outside Scripps without prior approval of the chief scientist or Shipboard Technical Support, Scripps Institution of Oceanography, La Jolla, California 92093-0223*

STS Cruise ID#306

Report and Index of Navigation and Underway Geophysical Data

Contents:

Index Chart - give track of cruise leg, dates, ports.

Track Charts - annotated with dates and hour ticks.

Profiles - depth, magnetic and gravity free air anomaly vs. distance.

Sample Index - list of begin/end times and positions of all underway records as well as samples and measurements from other disciplines collected on the leg.

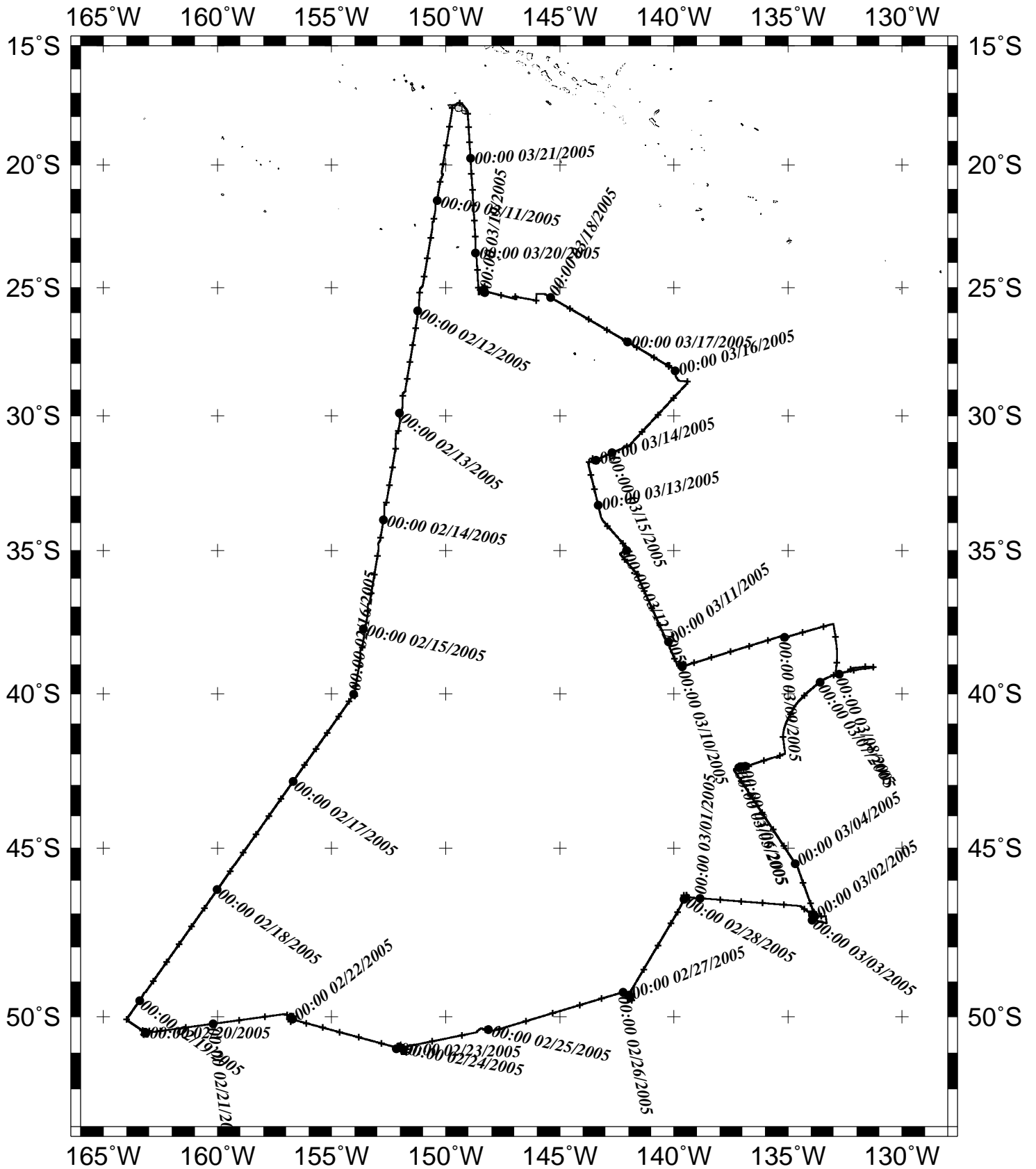
Note:

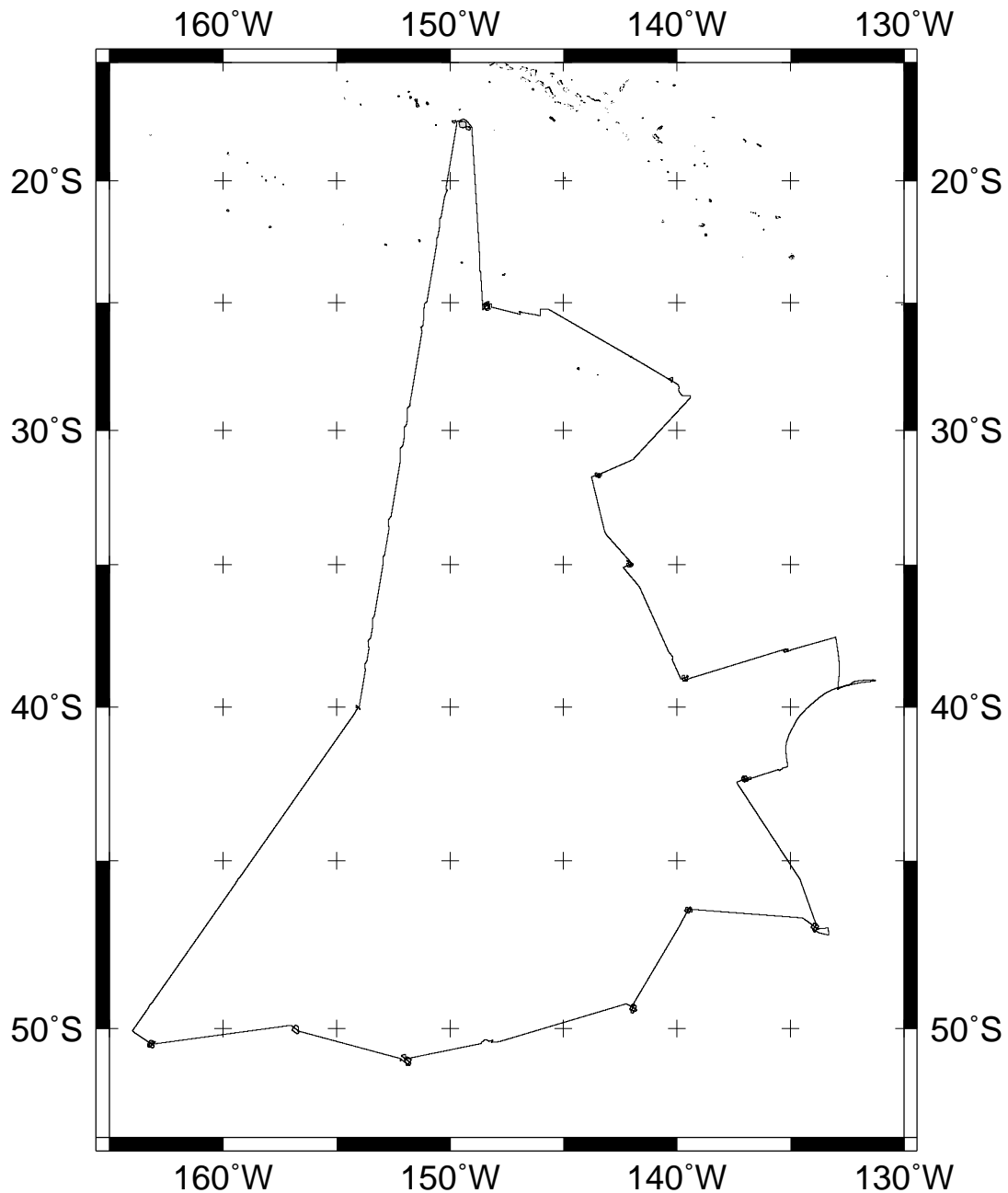
For information on the availability of this current digital data as well as archived digital data contact:

Stephen P. Miller
Geological Data Center
Scripps Institution of Oceanography
La Jolla, California 92093-0220
Phone: (858) 534-1898
Internet email: spmiller@ucsd.edu; or his website: <http://SIOExplorer@ucsd.edu>

Rev 05/2002

TUIM03MV





TUI MALILA EXPEDITION LEG 3 (TUIM03MV)

=====

CHIEF SCIENTIST: Mitch Lyle, Boise State University

PORTS: Papeete - Papeete, Tahiti

DATES: 10 February - 21 March 2005

SHIP: R/V Melville

TOTAL MILEAGE OF UNDERWAY DATA COLLECTED

Cruise-7686 miles

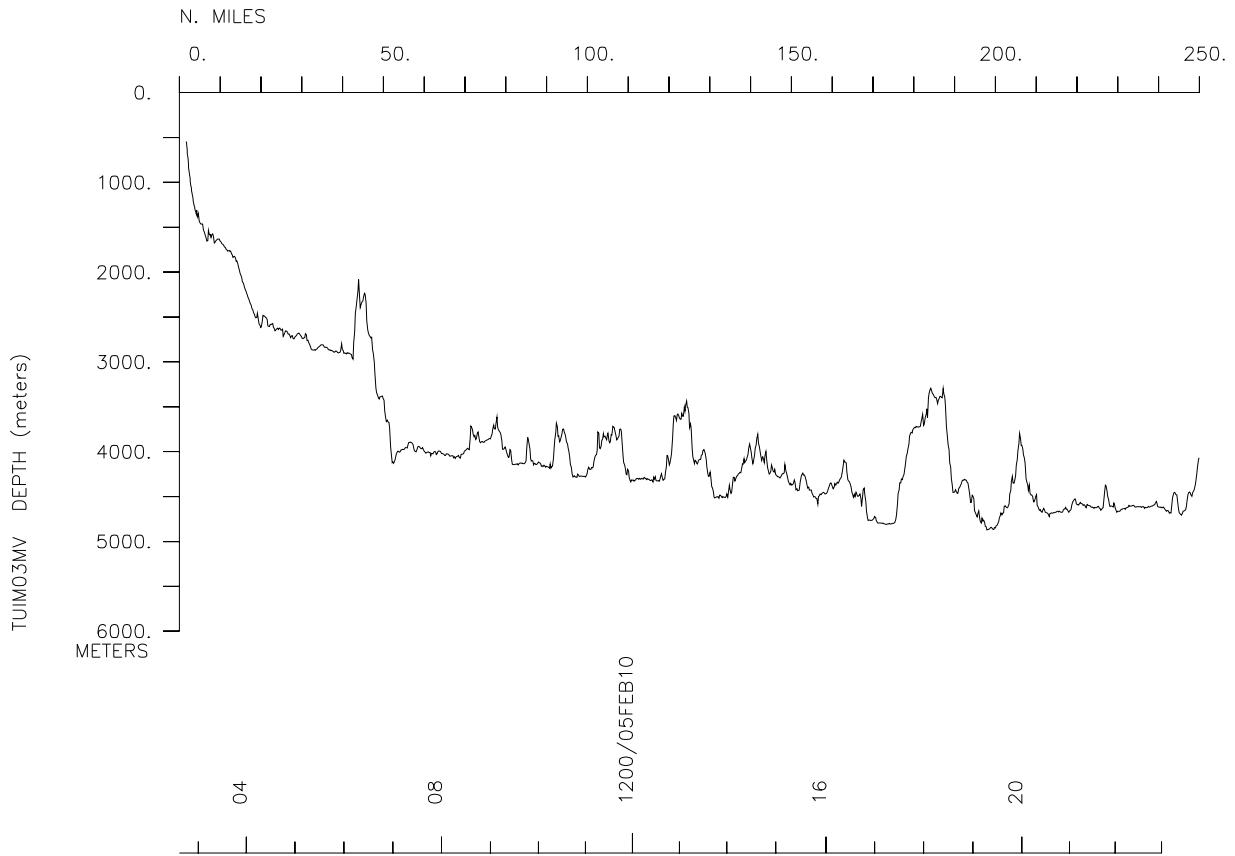
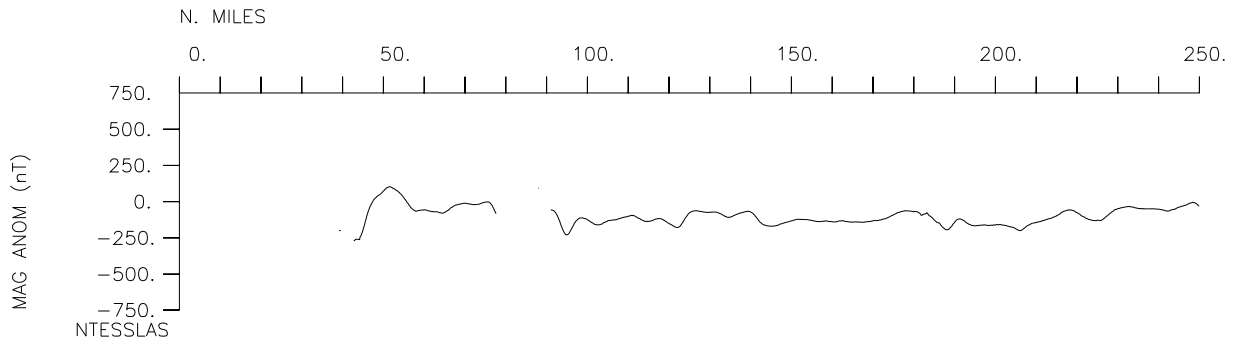
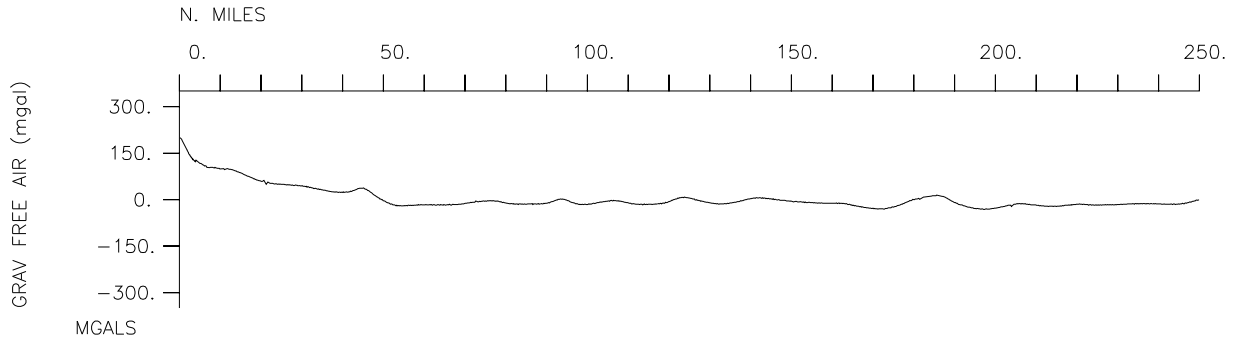
Magnetics-5079 miles

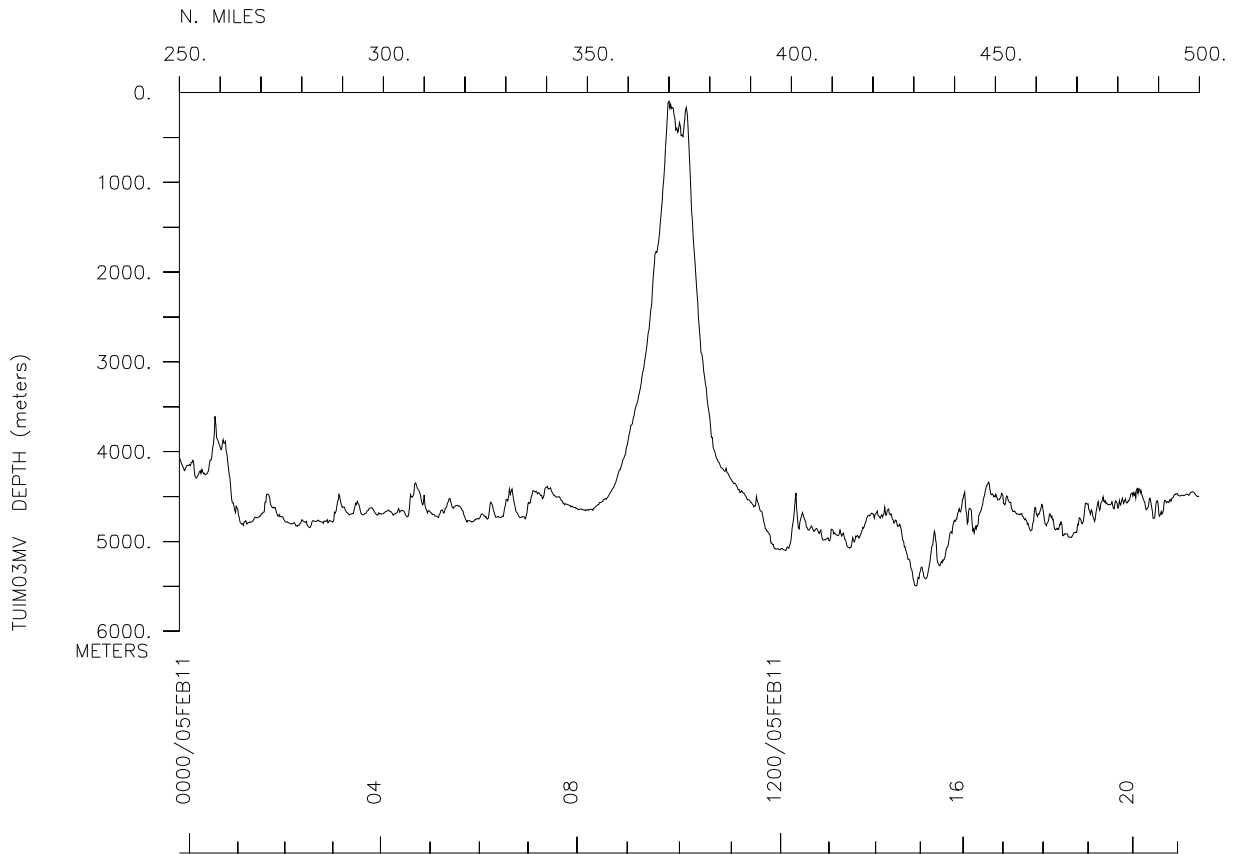
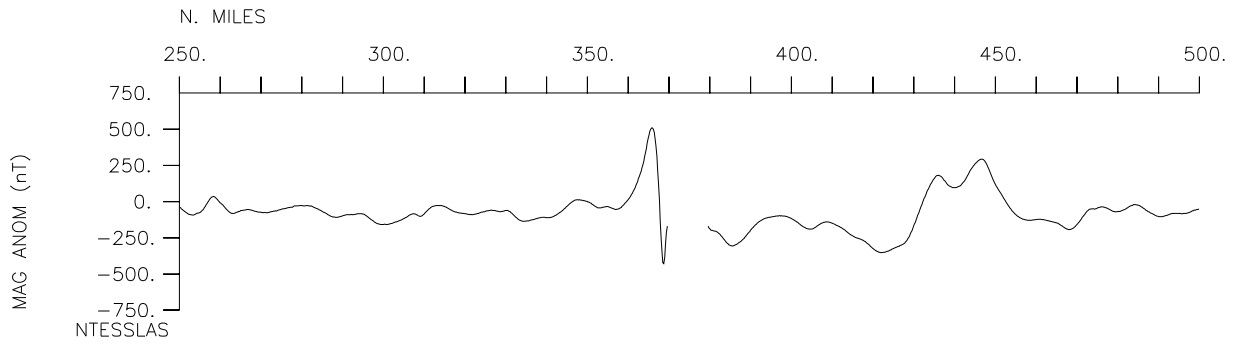
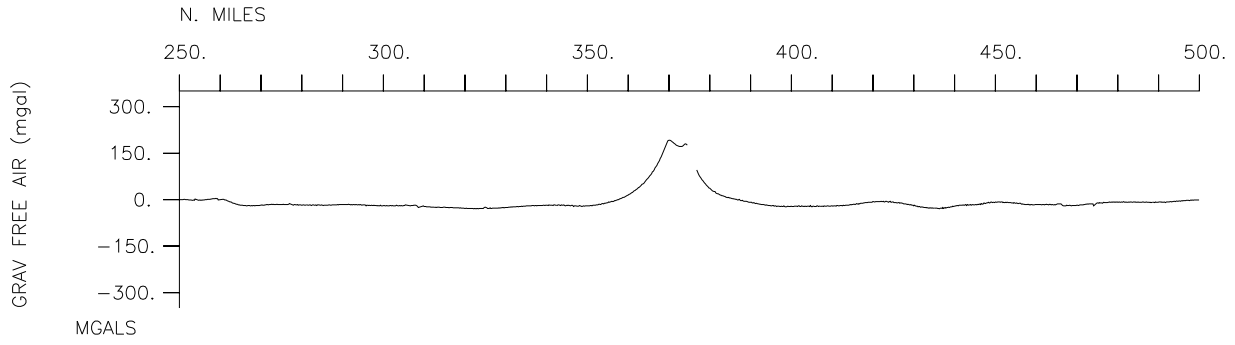
Bathymetry-7623 miles

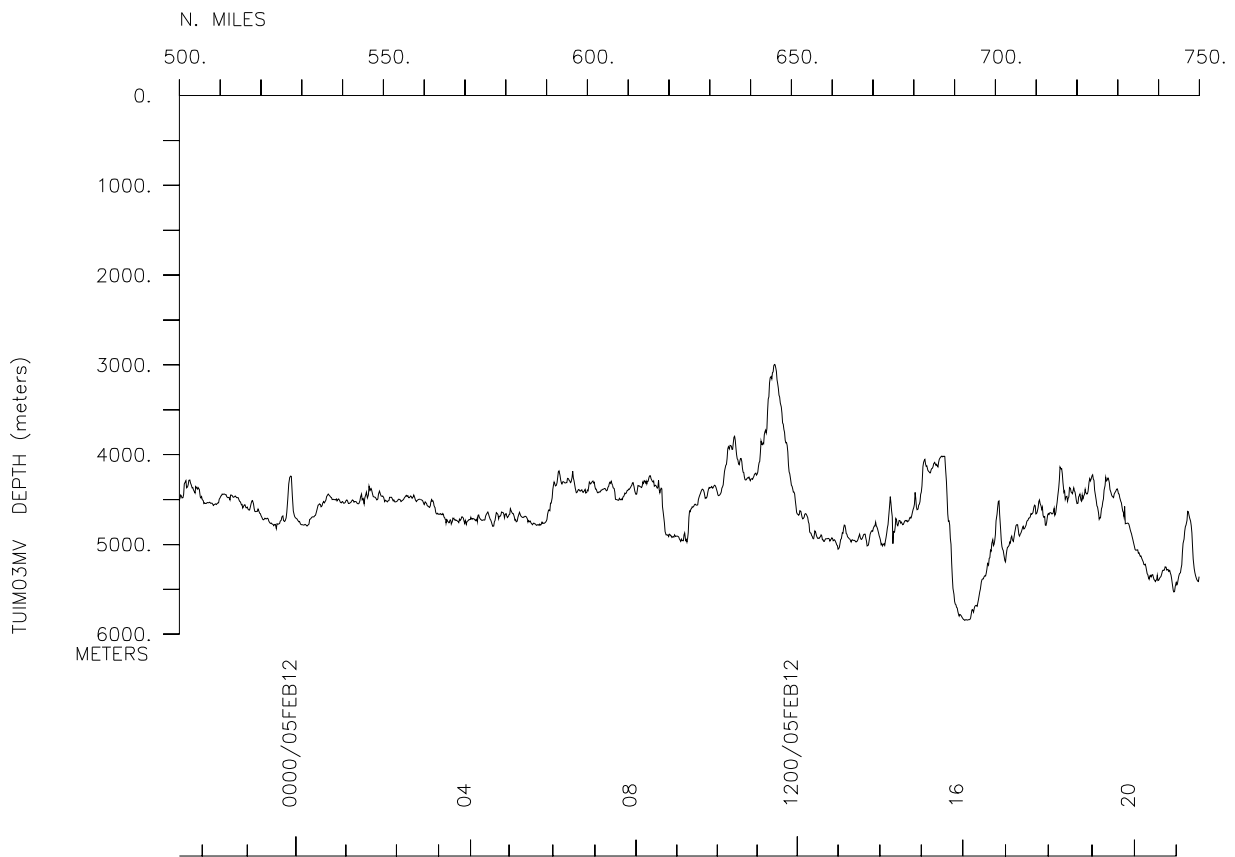
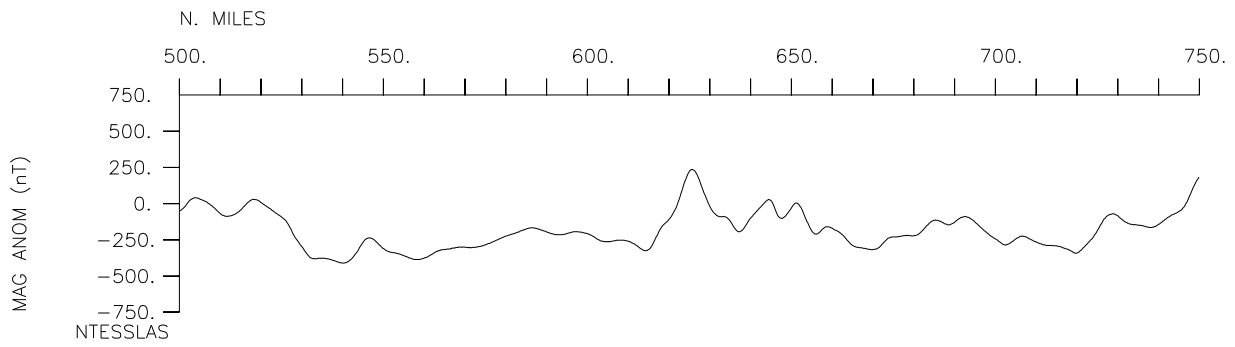
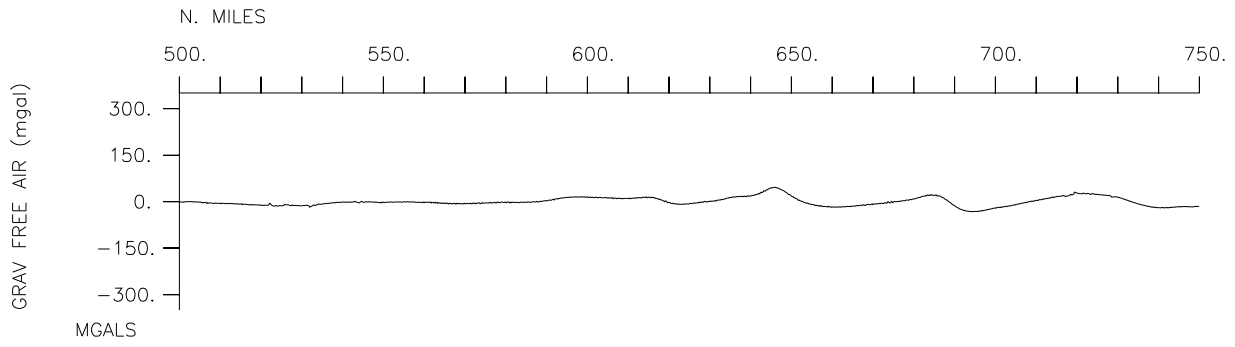
Seismic Reflection-none collected

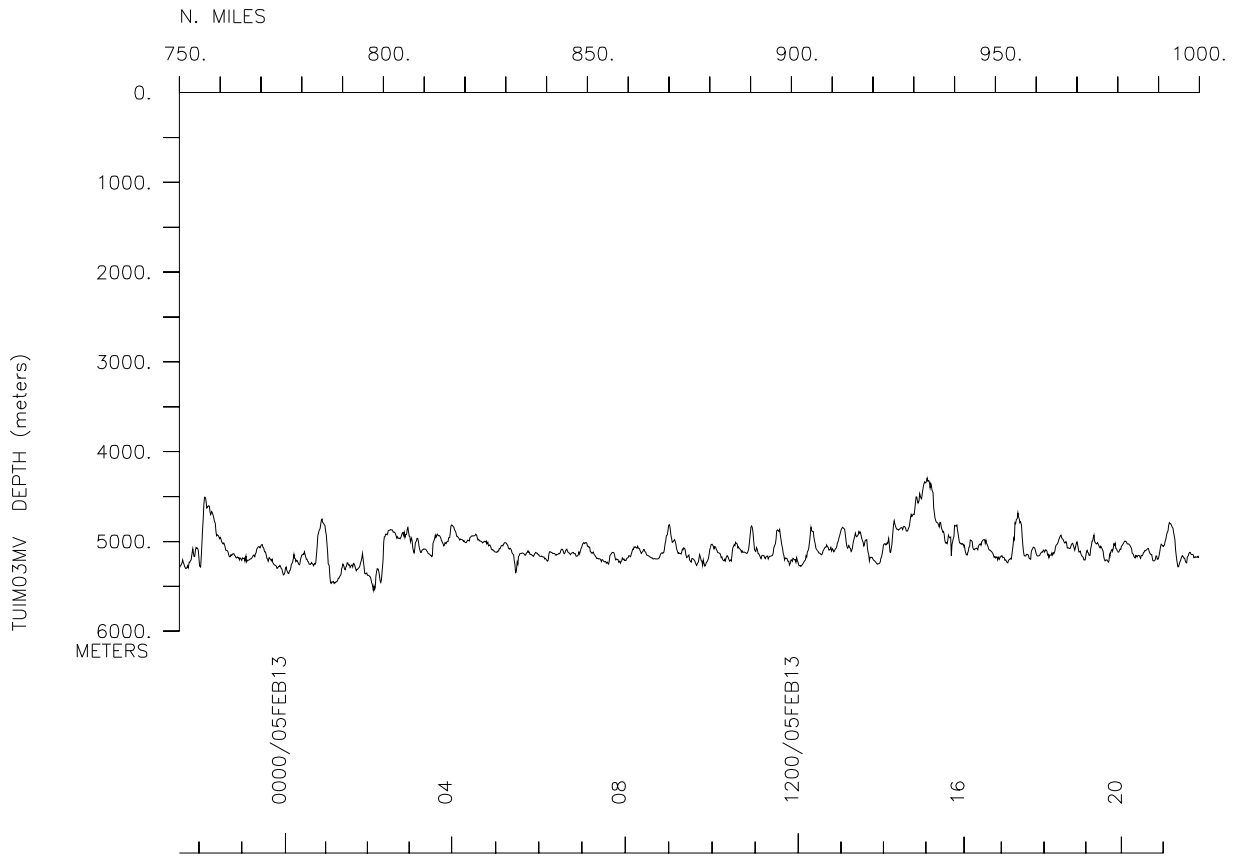
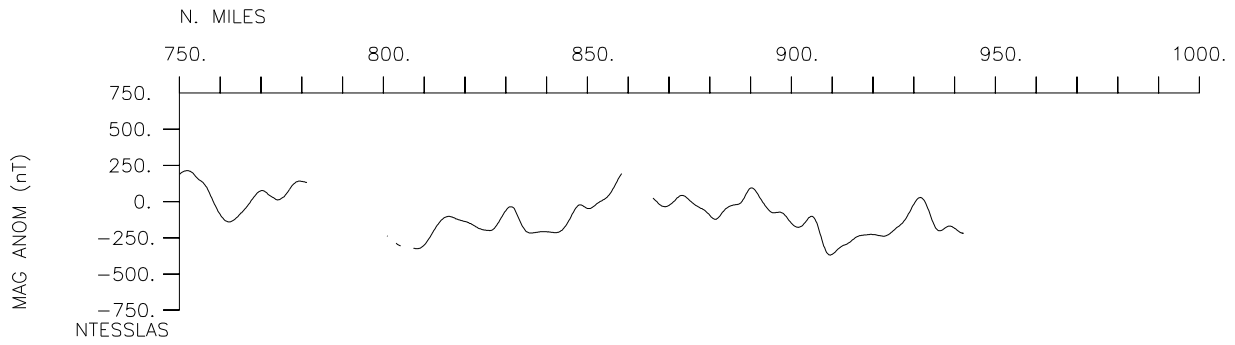
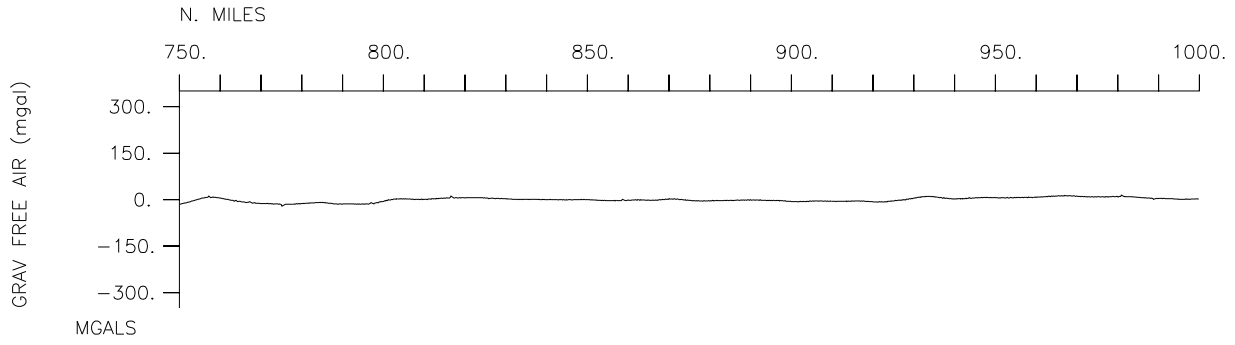
Multibeam-7623 miles

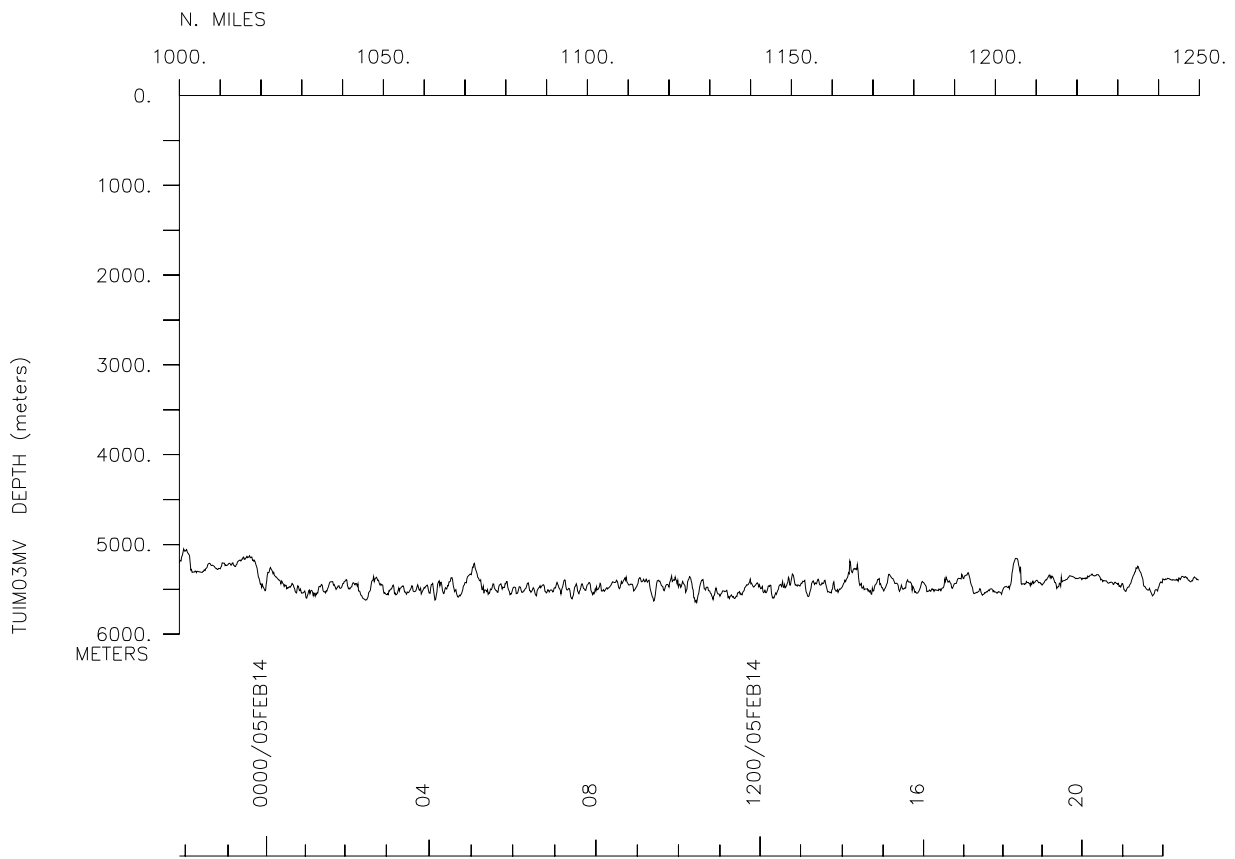
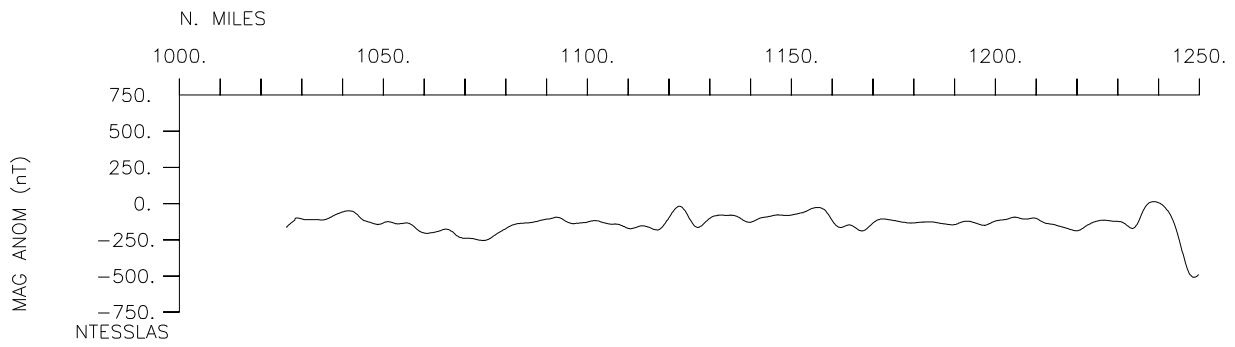
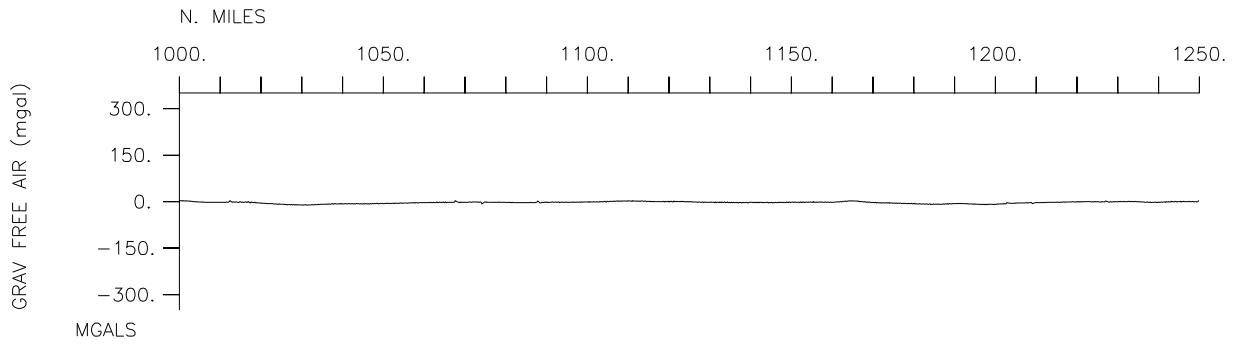
Gravity-7682 miles

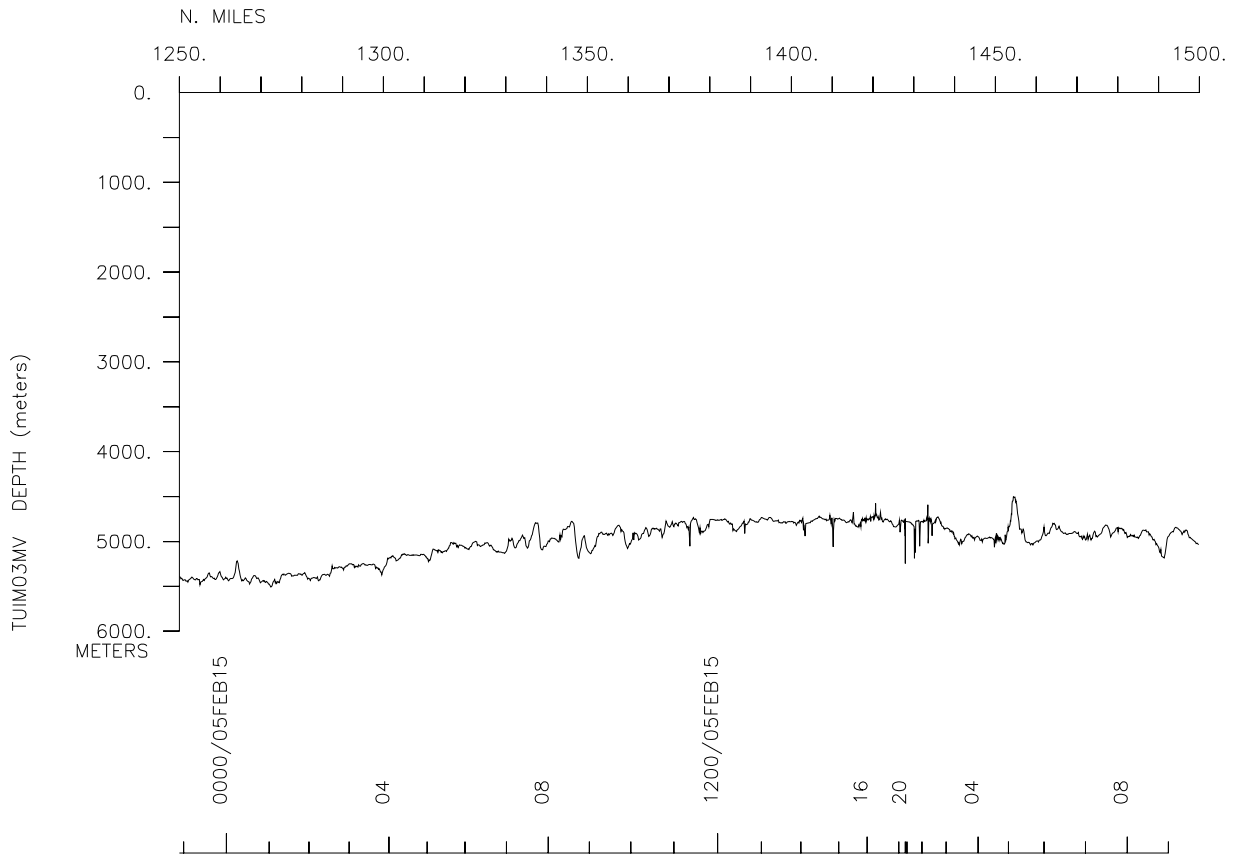
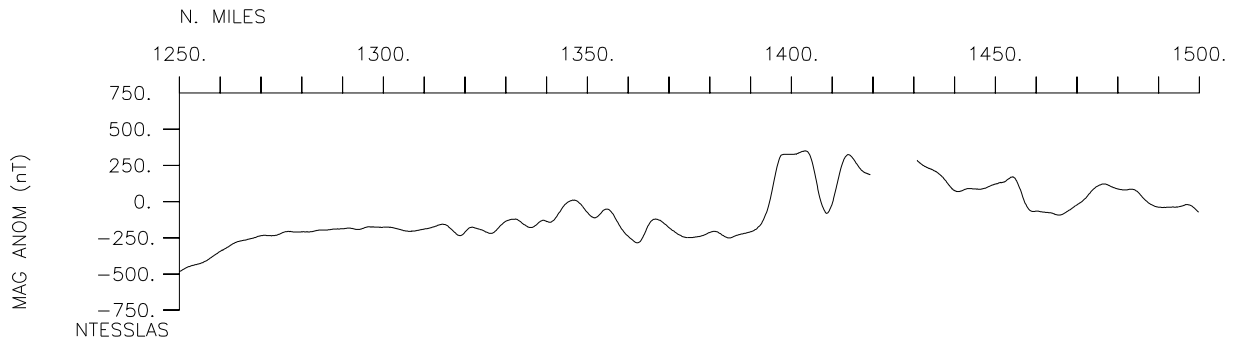
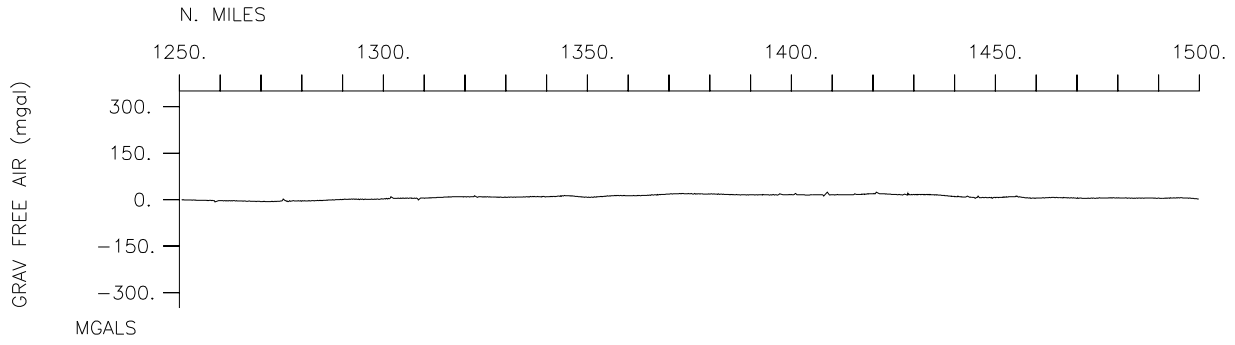


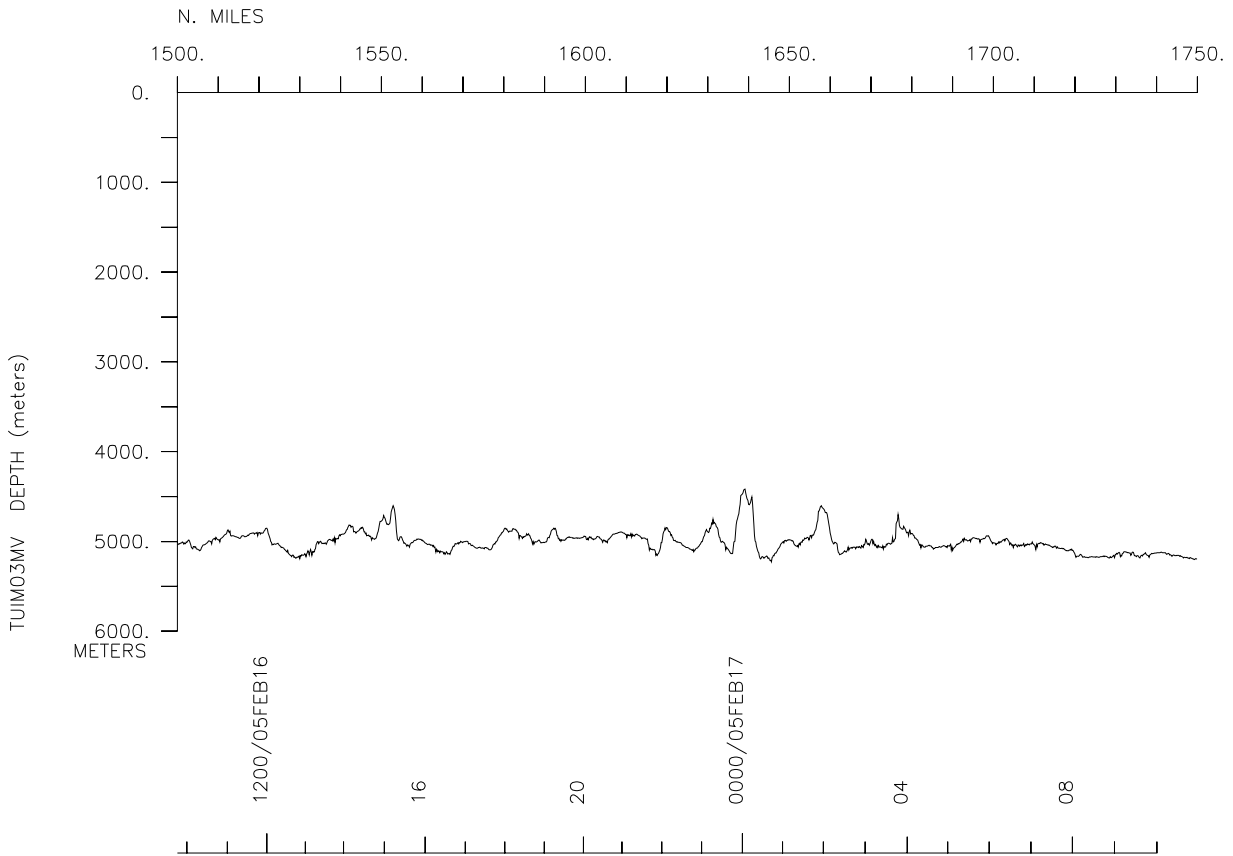
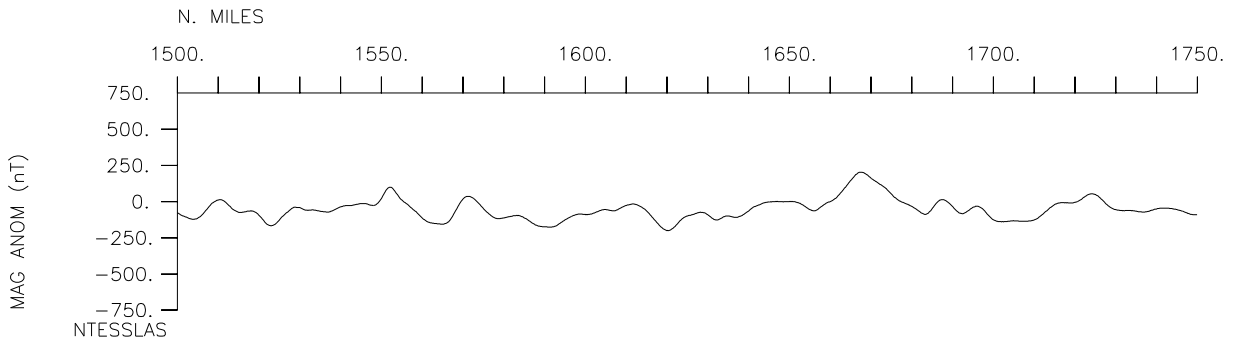
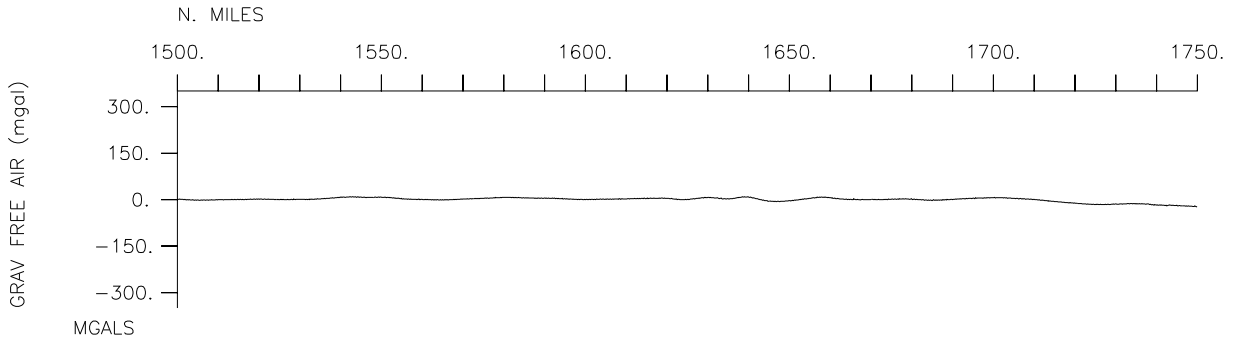


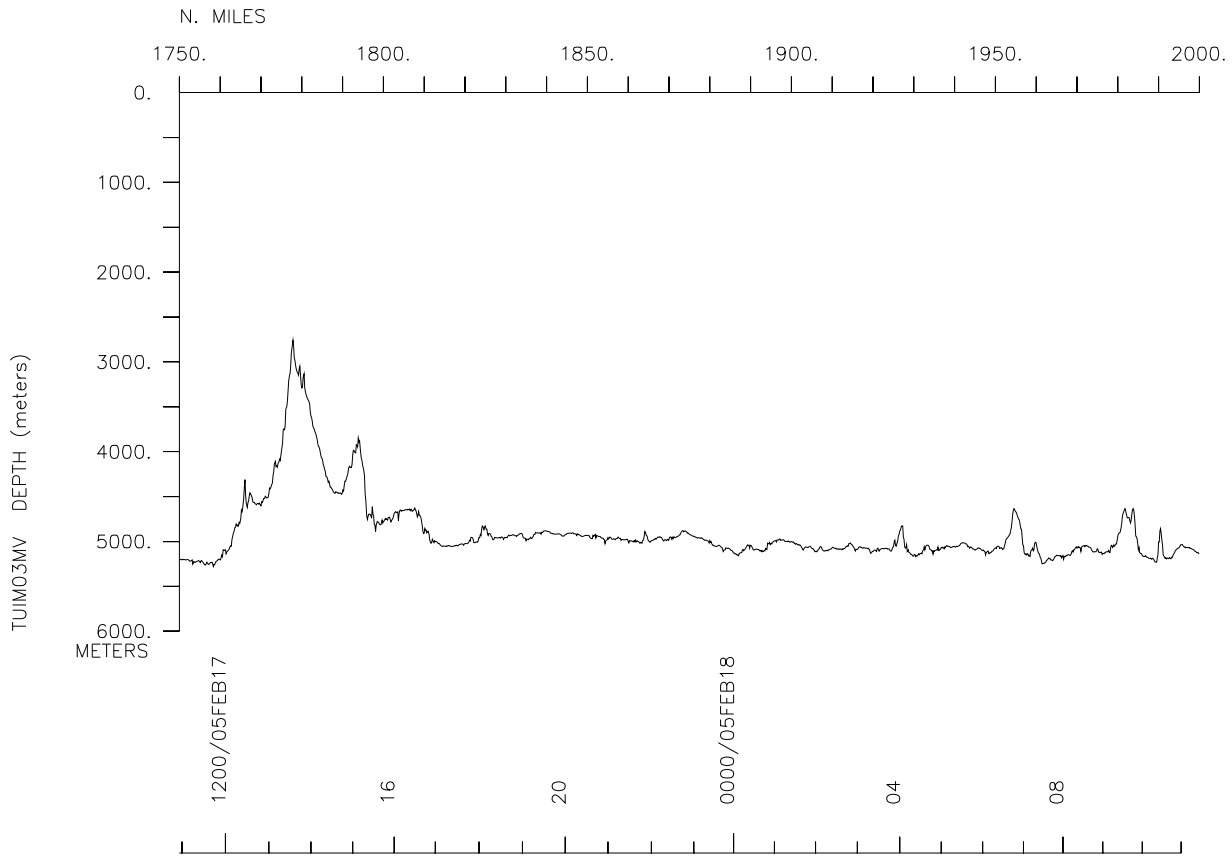
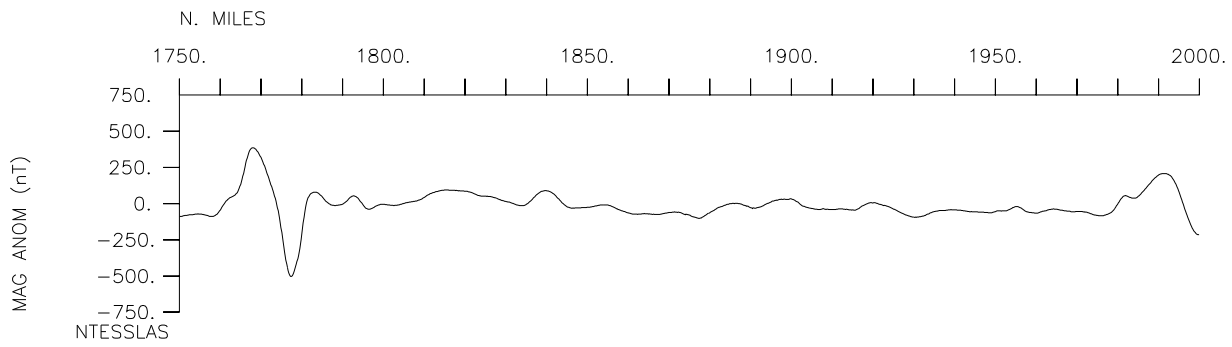
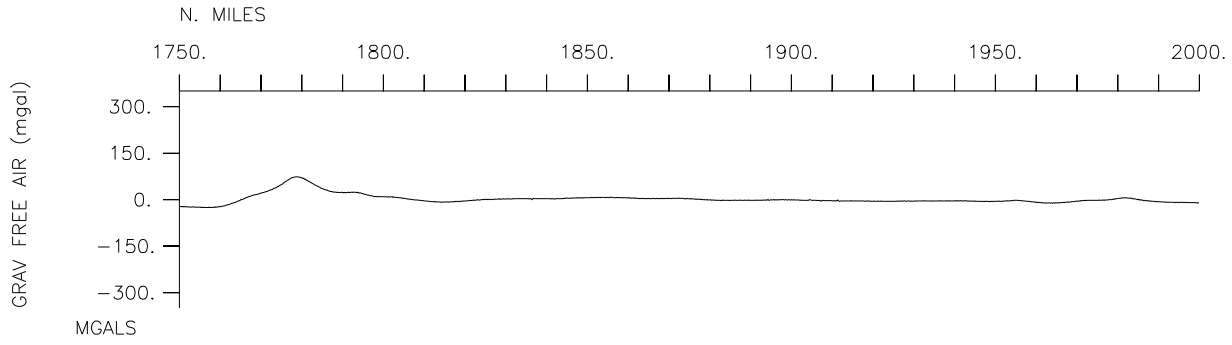


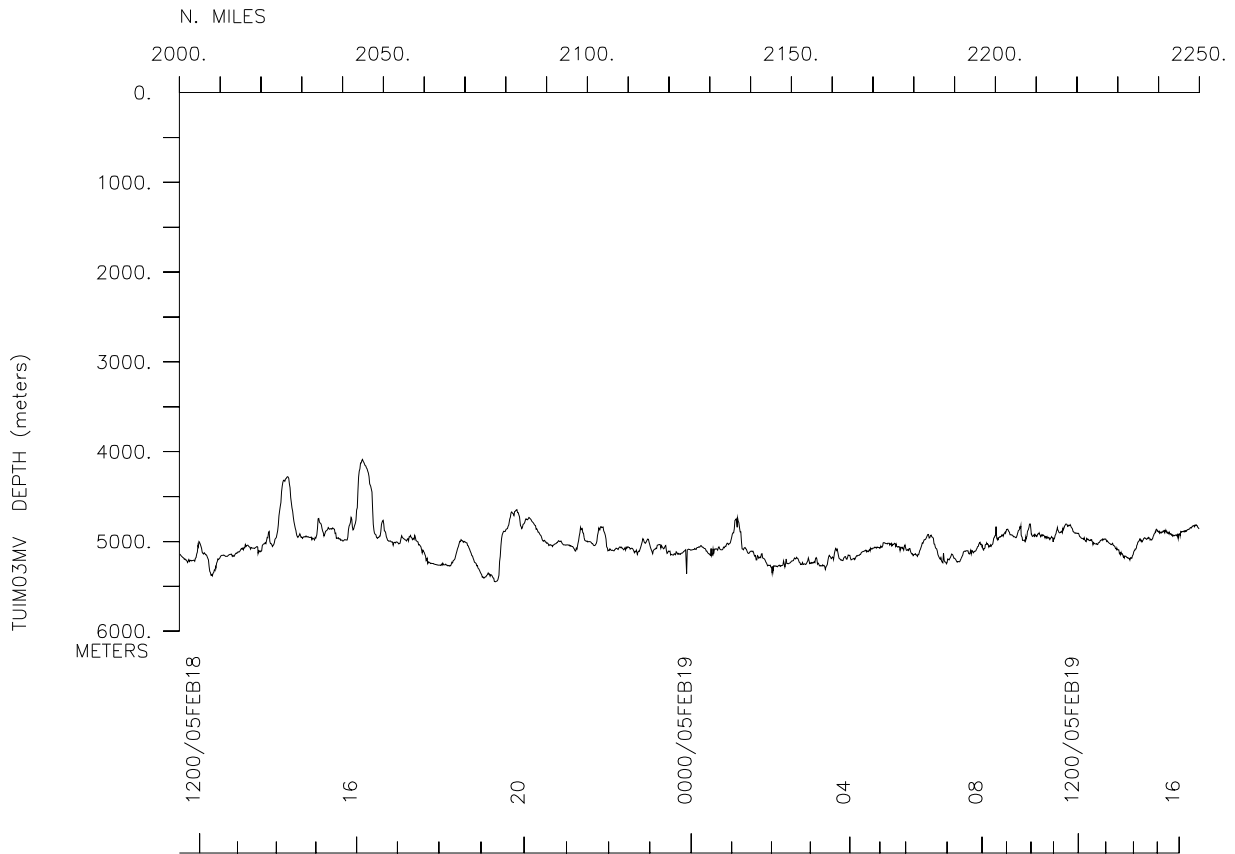
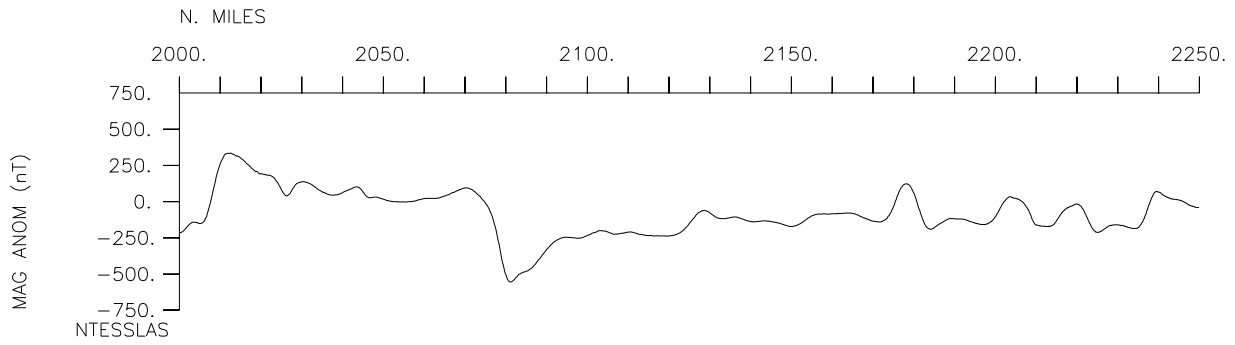
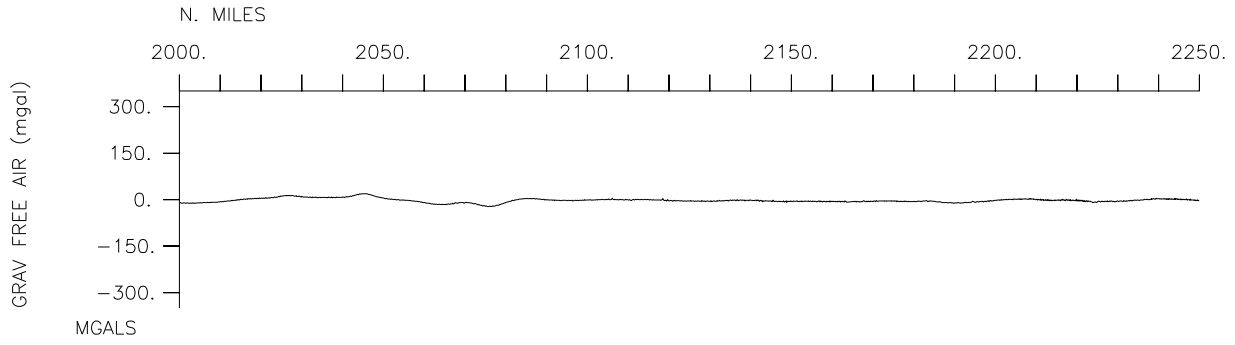


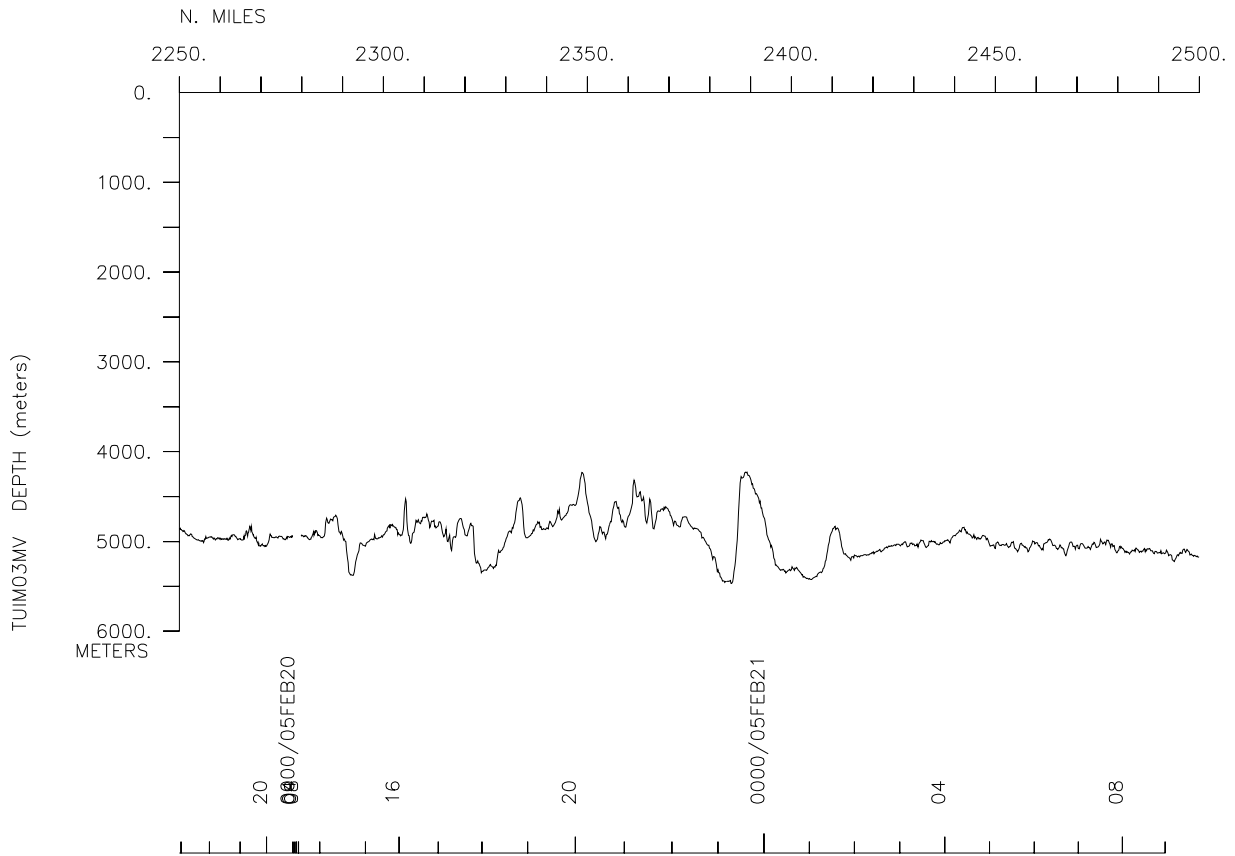
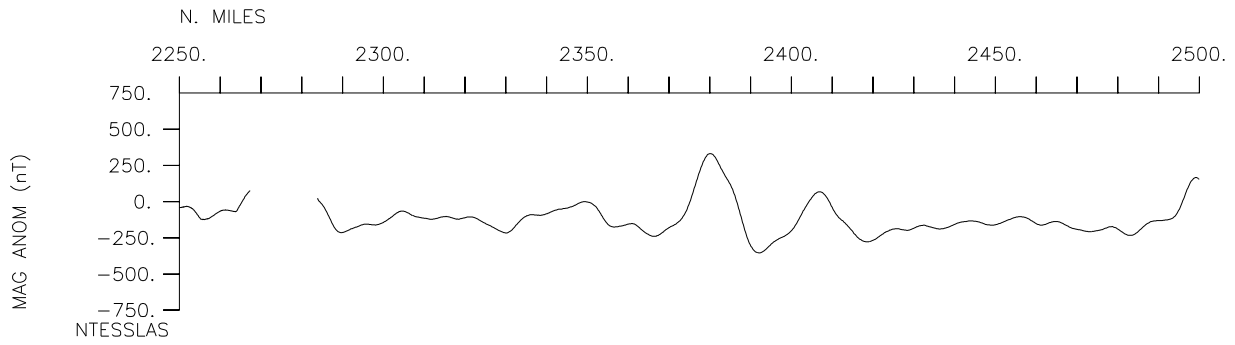
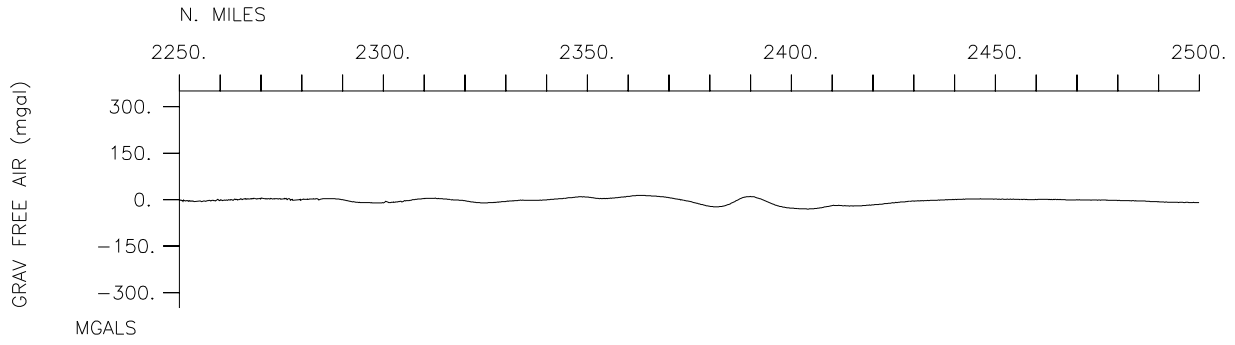


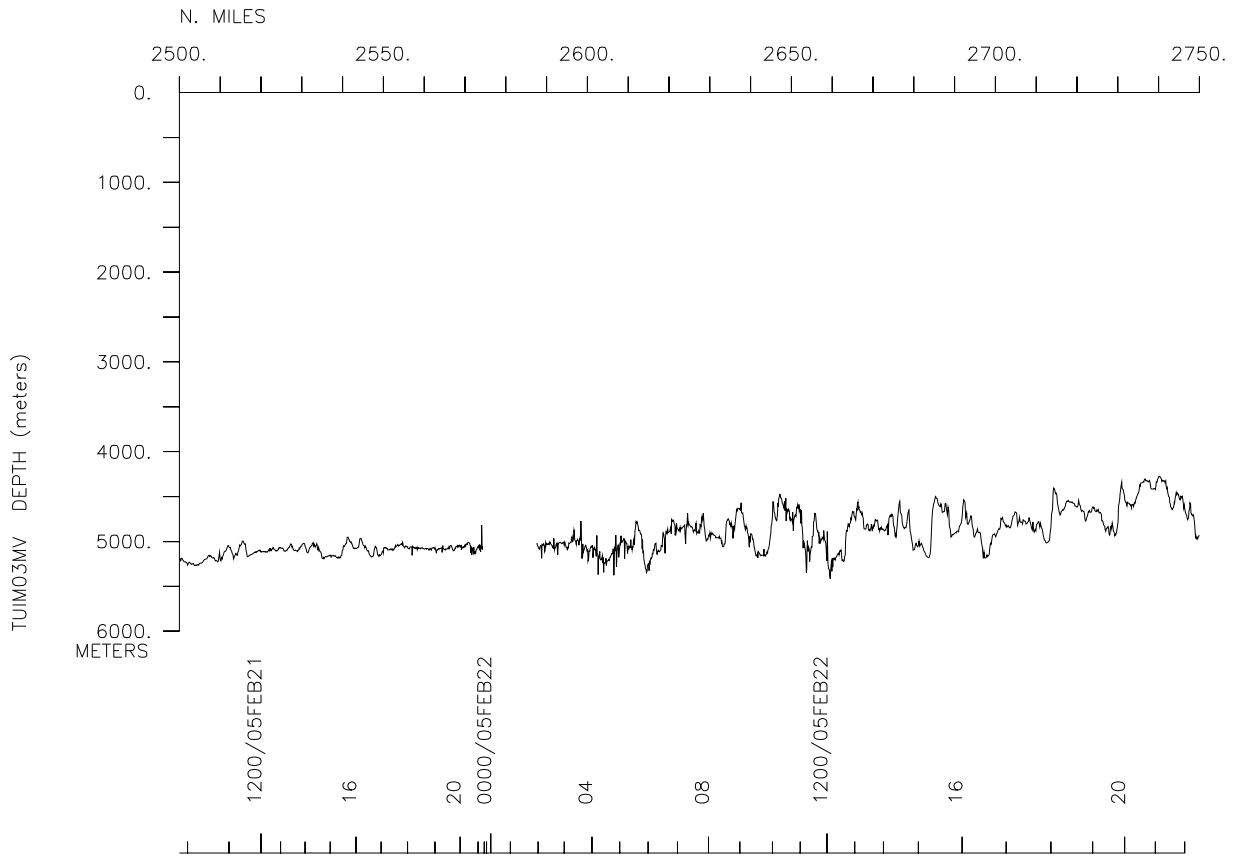
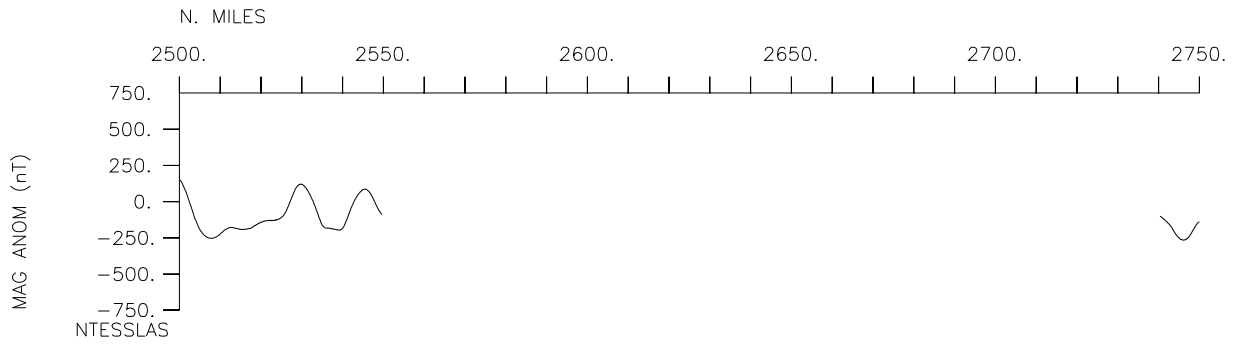
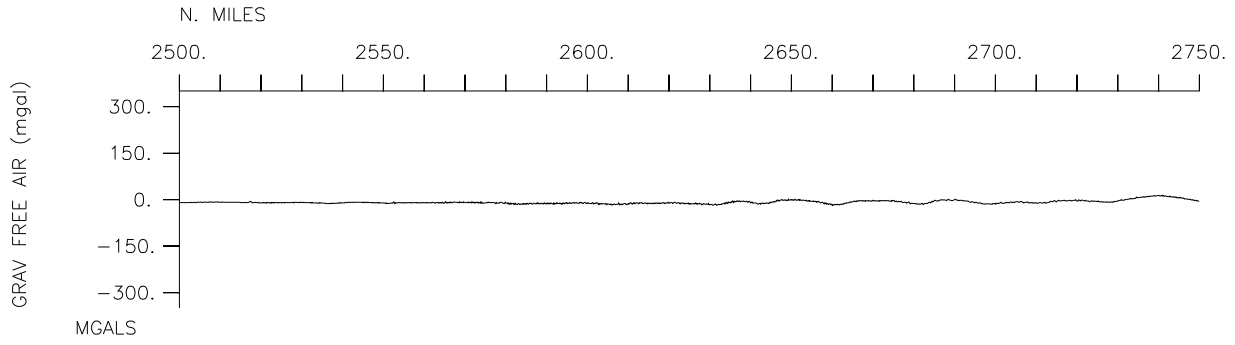


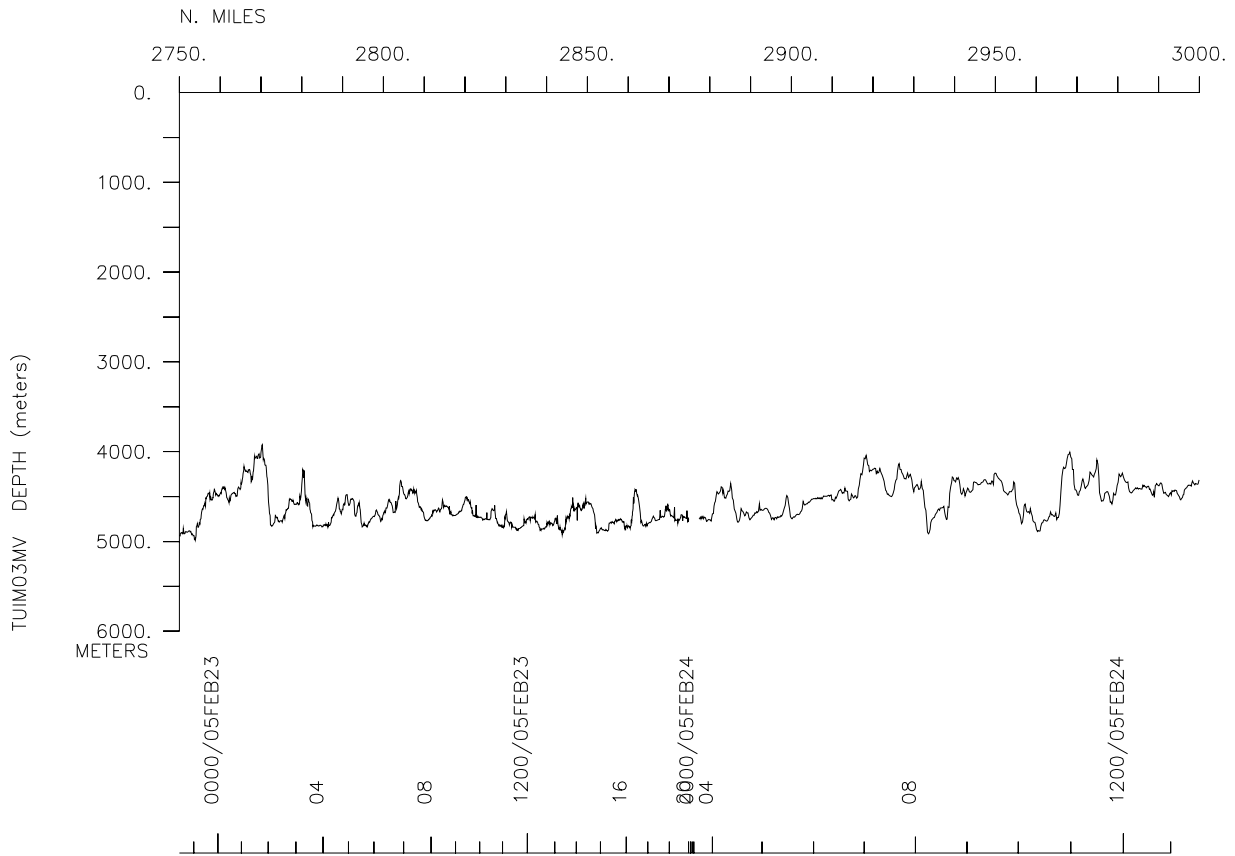
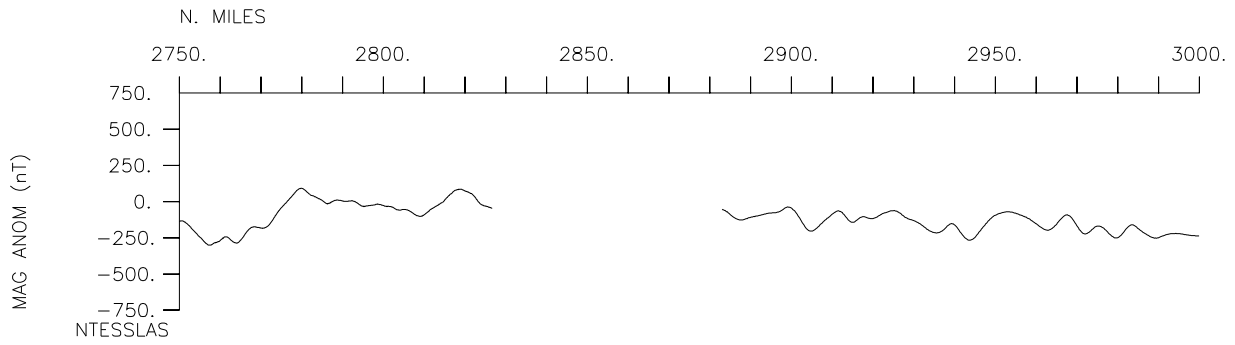
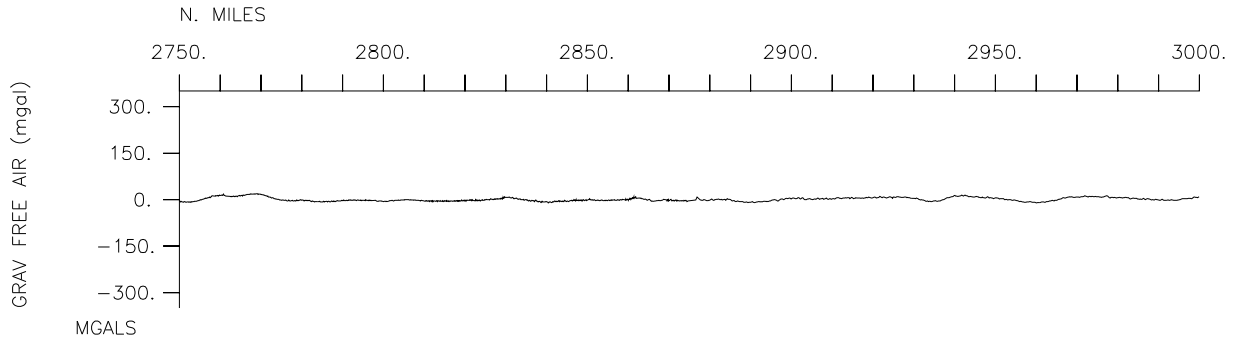


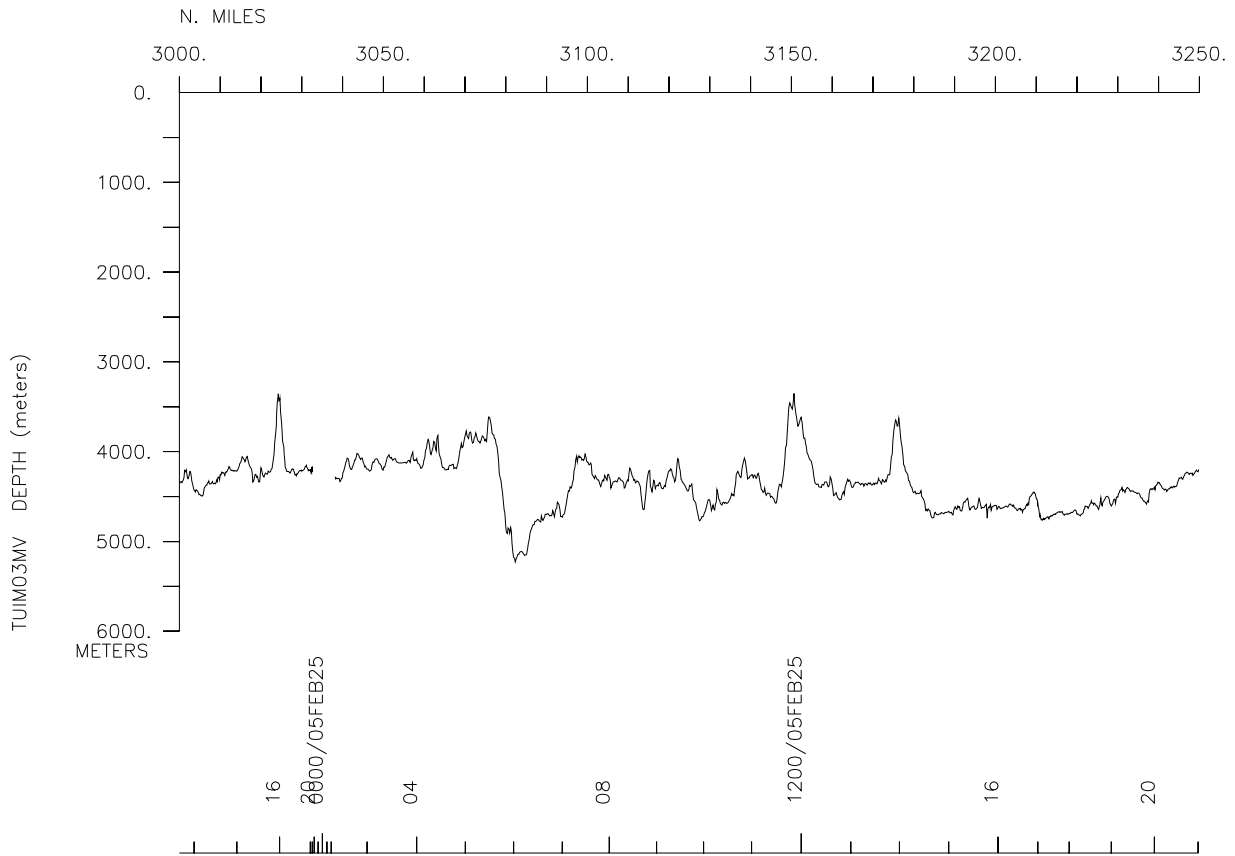
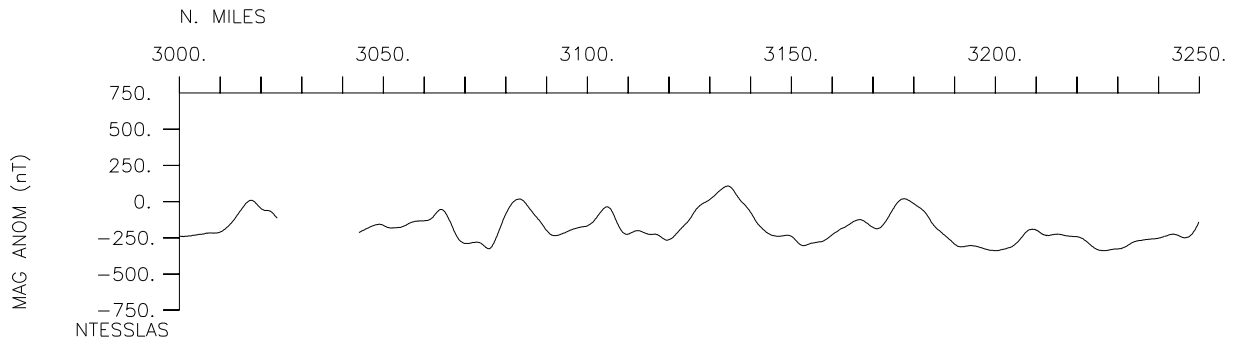
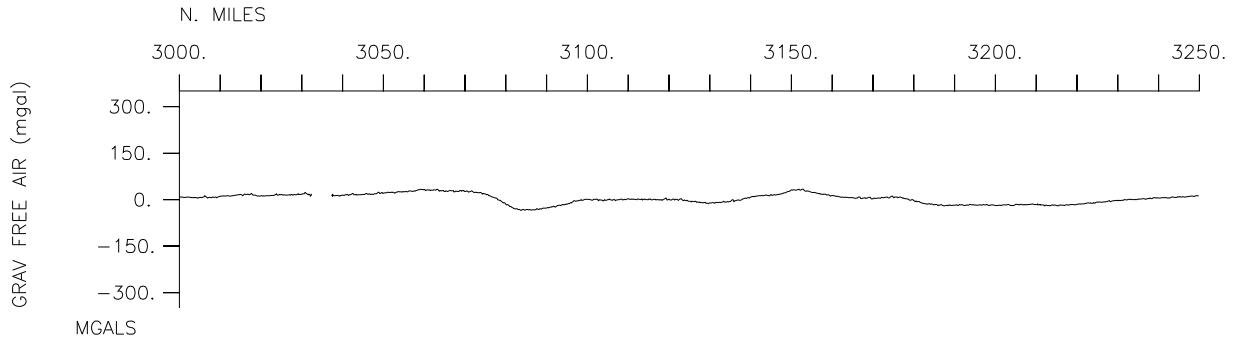


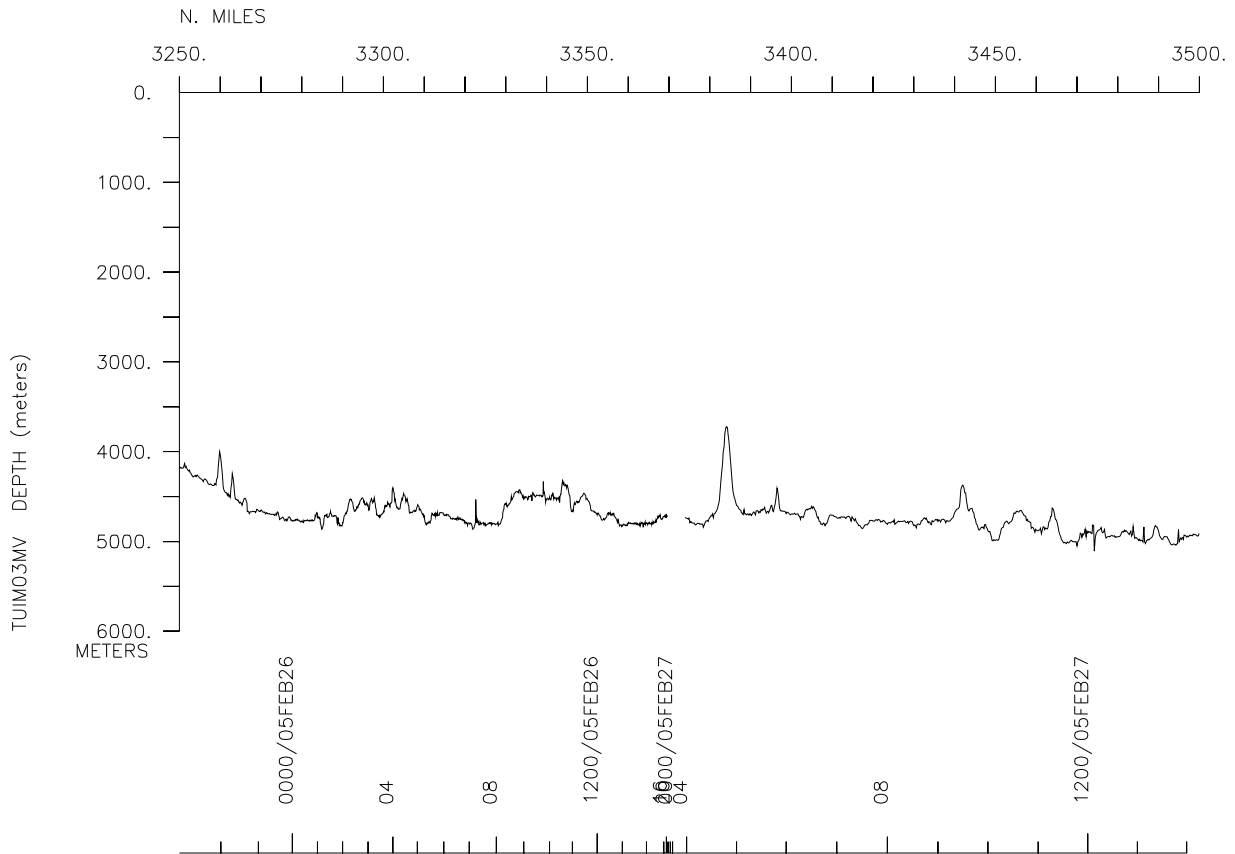
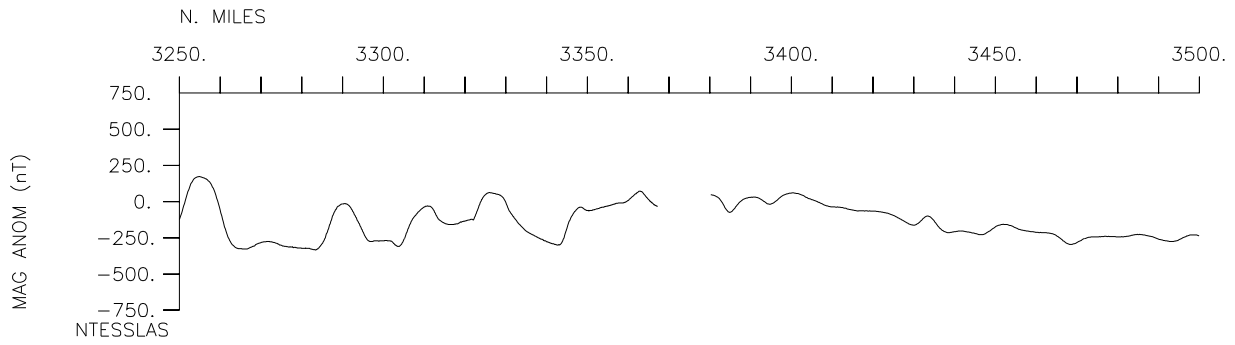
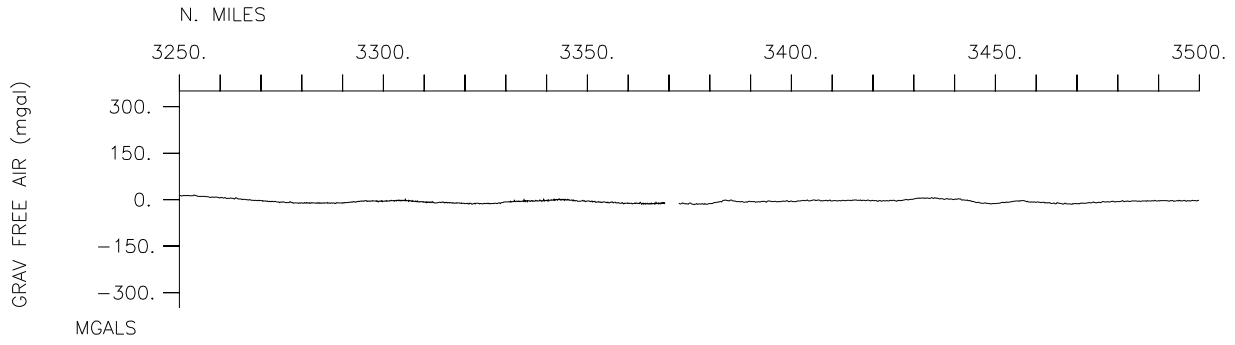


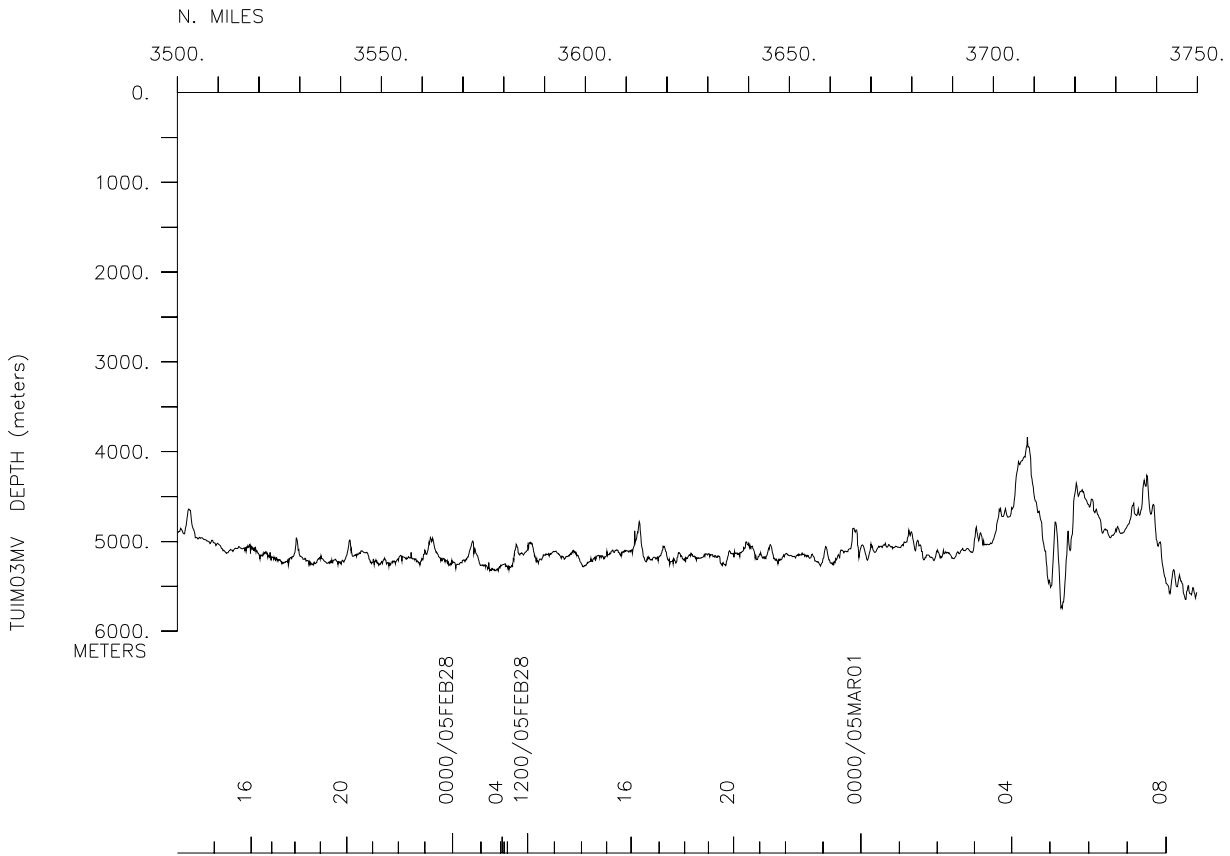
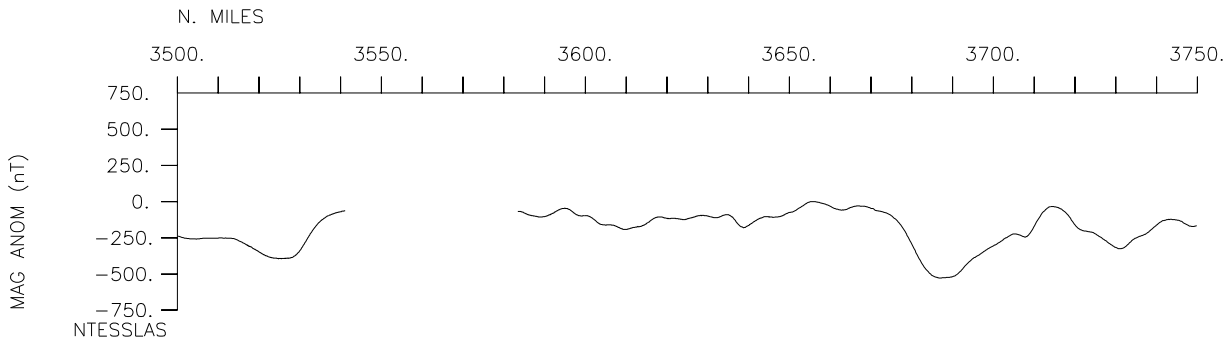
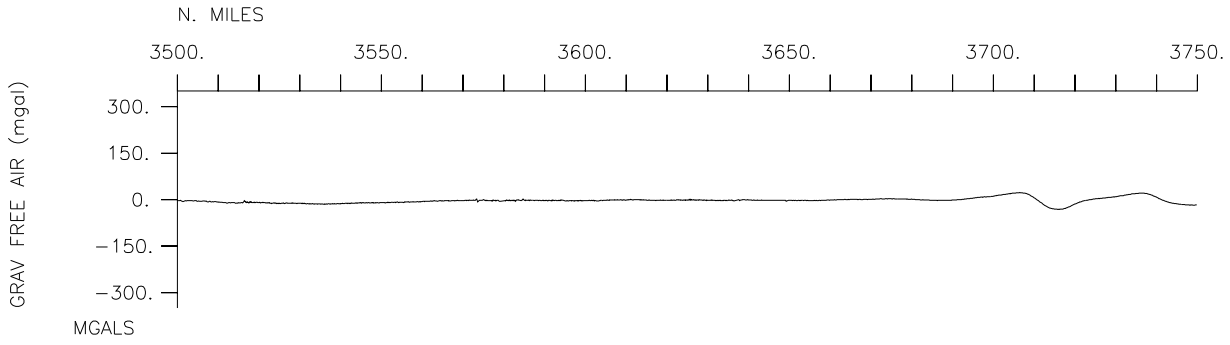


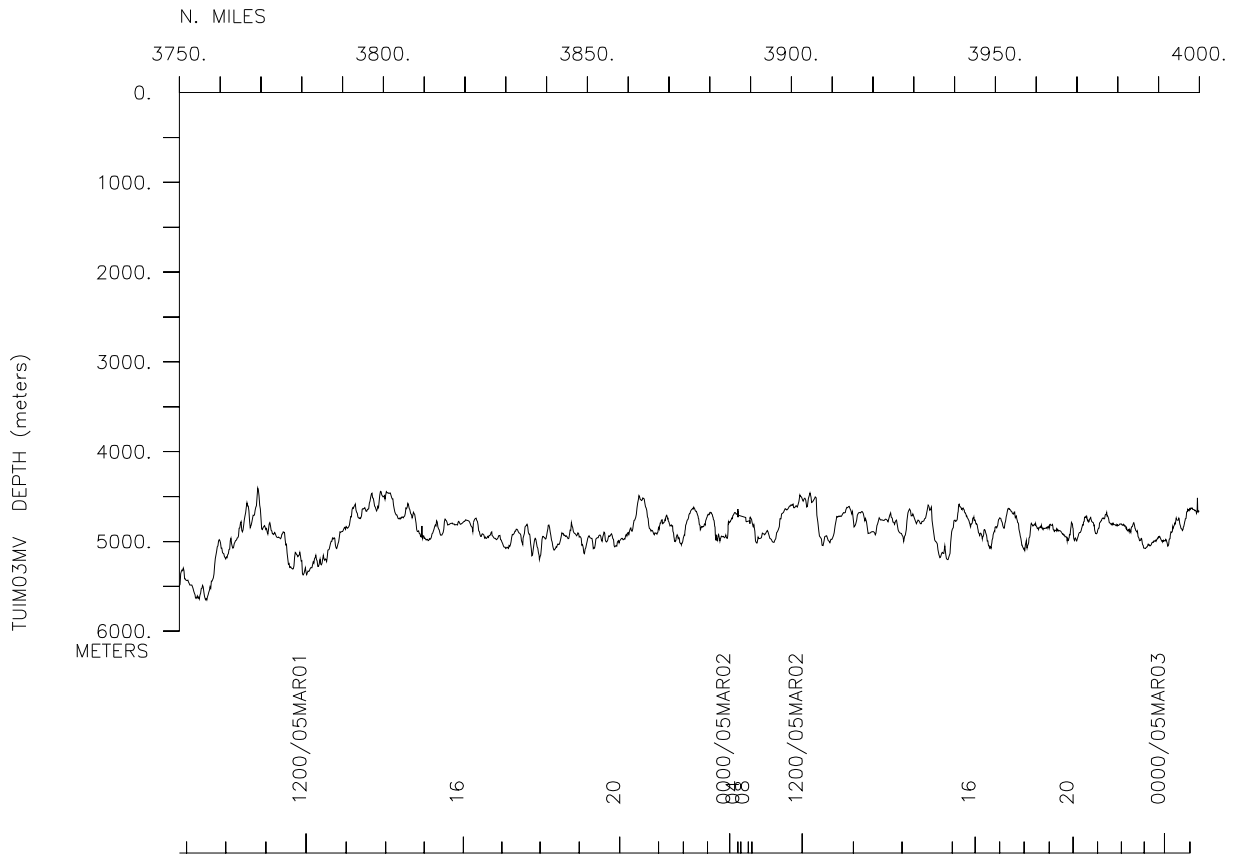
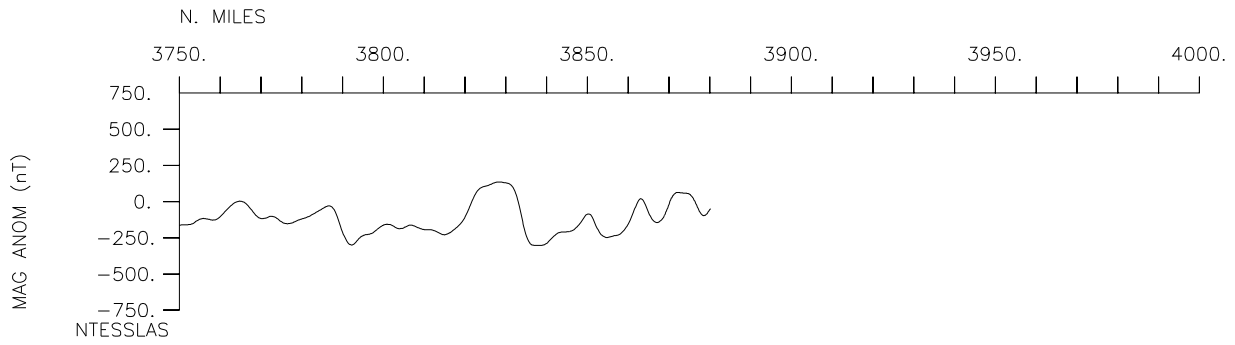
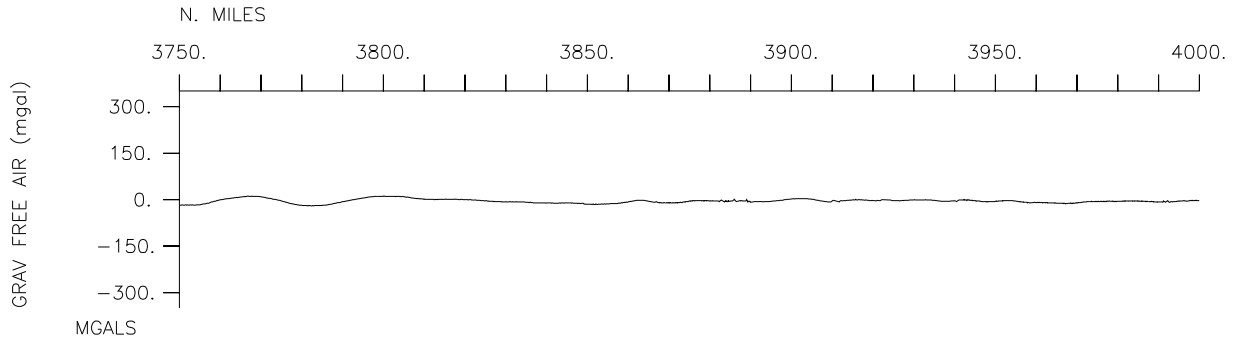


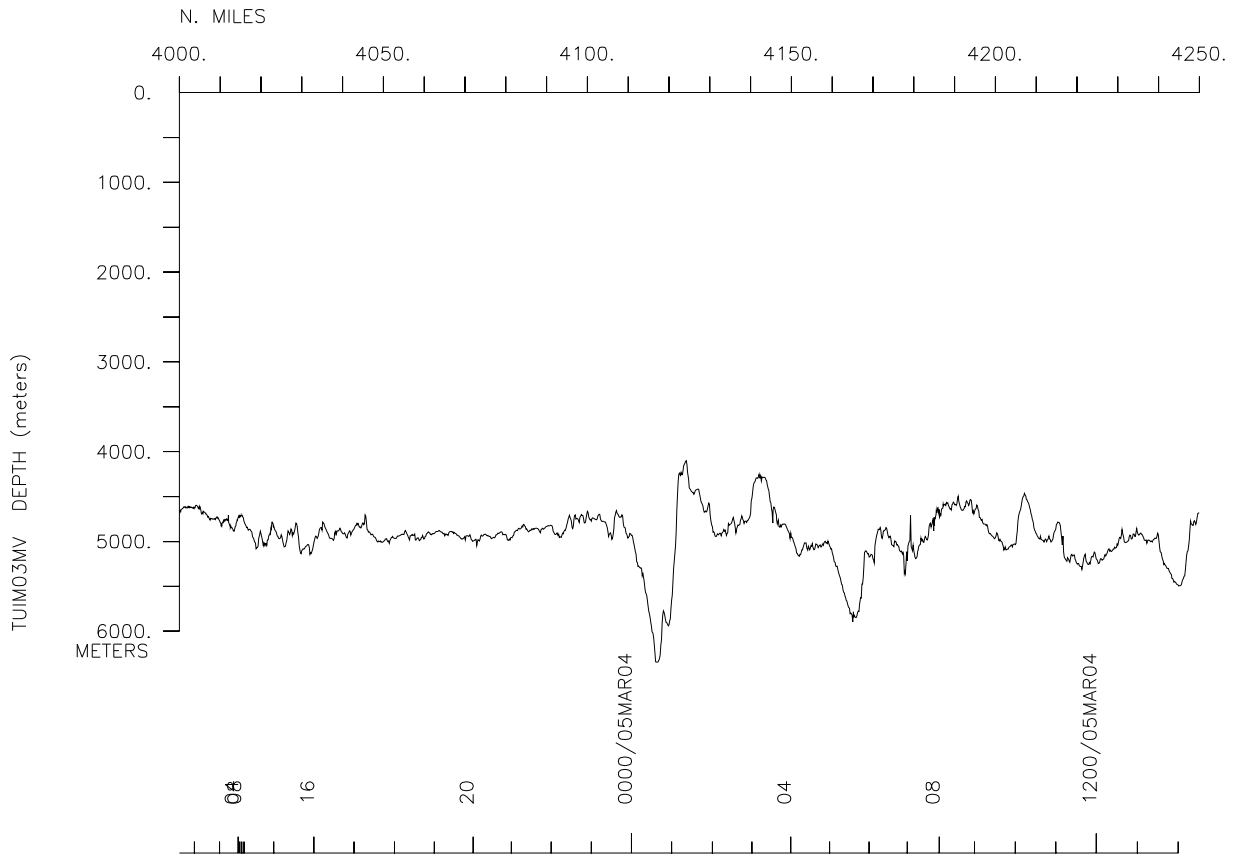
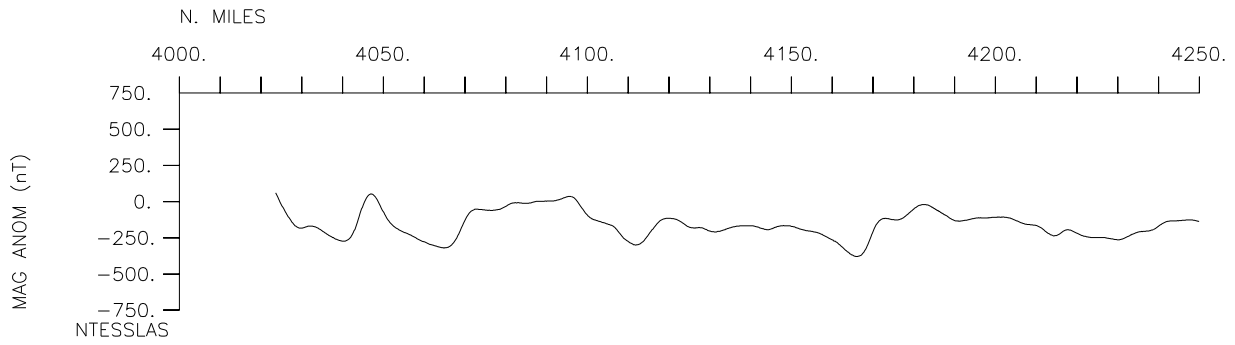
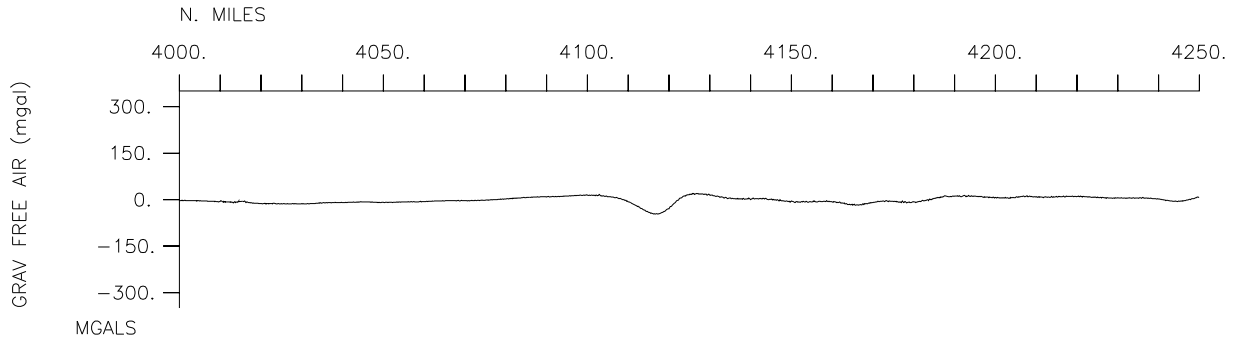


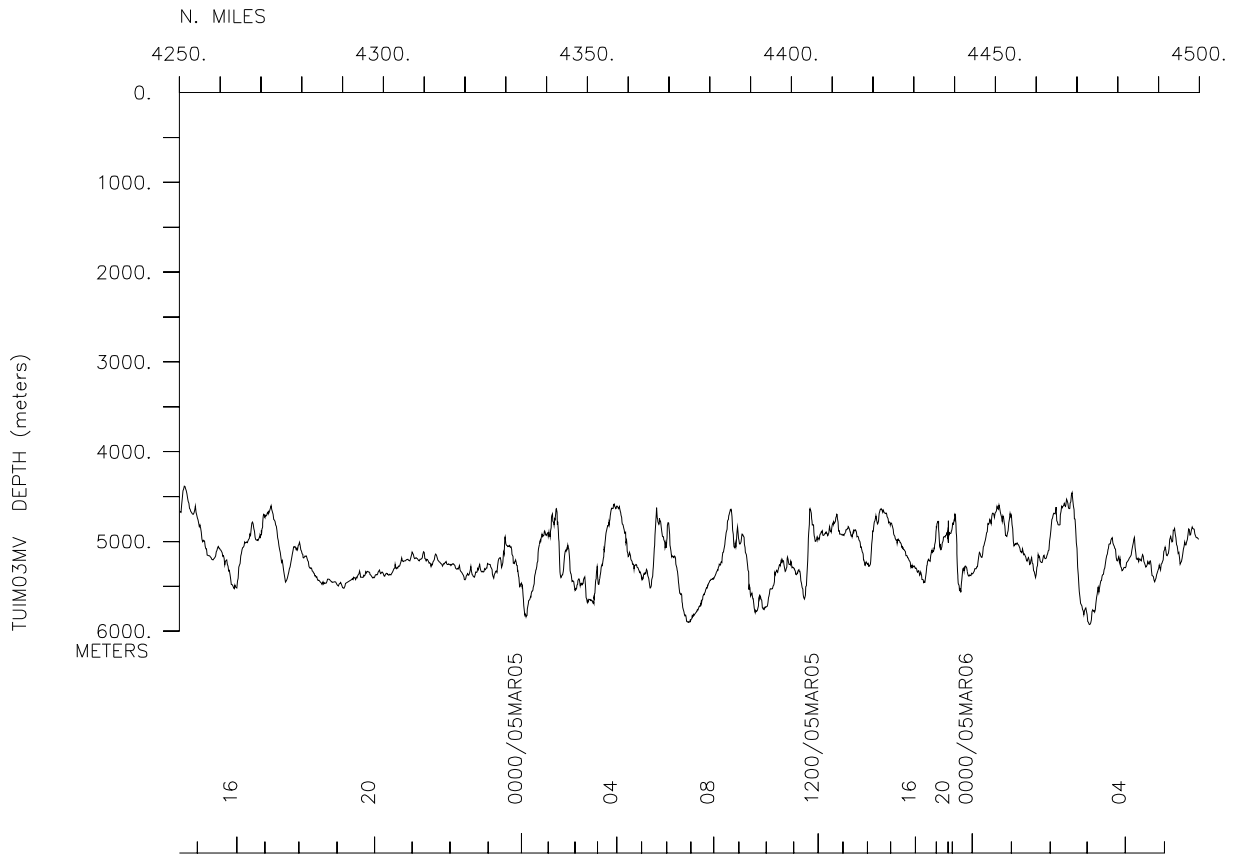
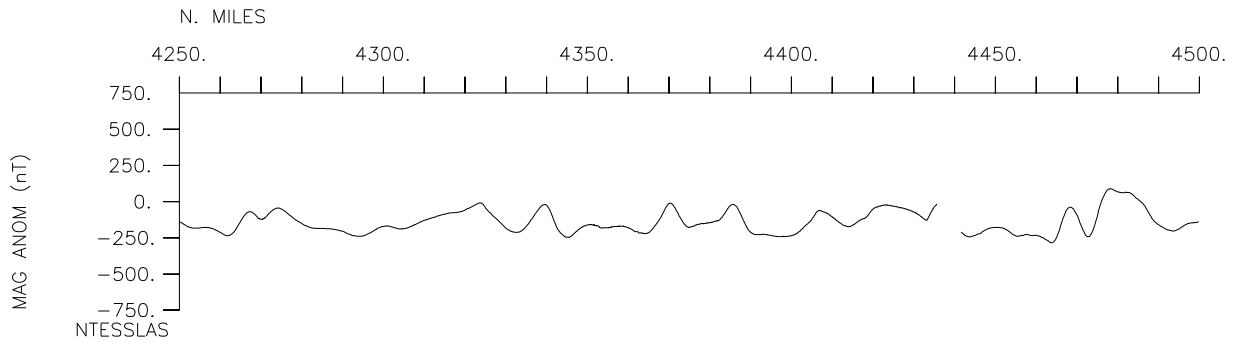
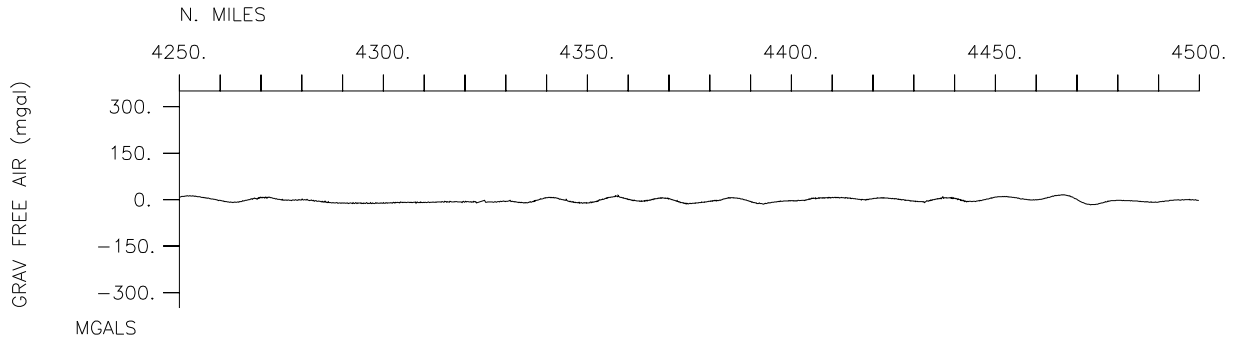


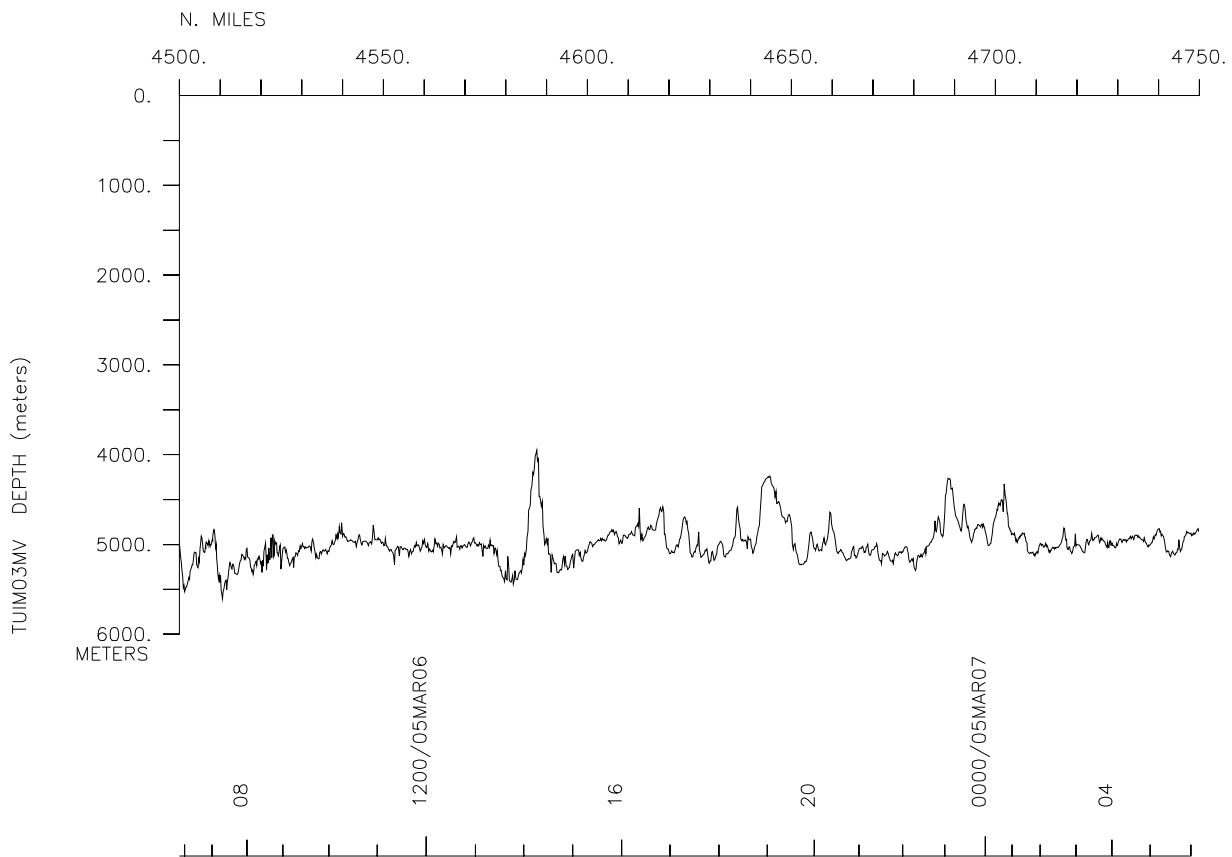
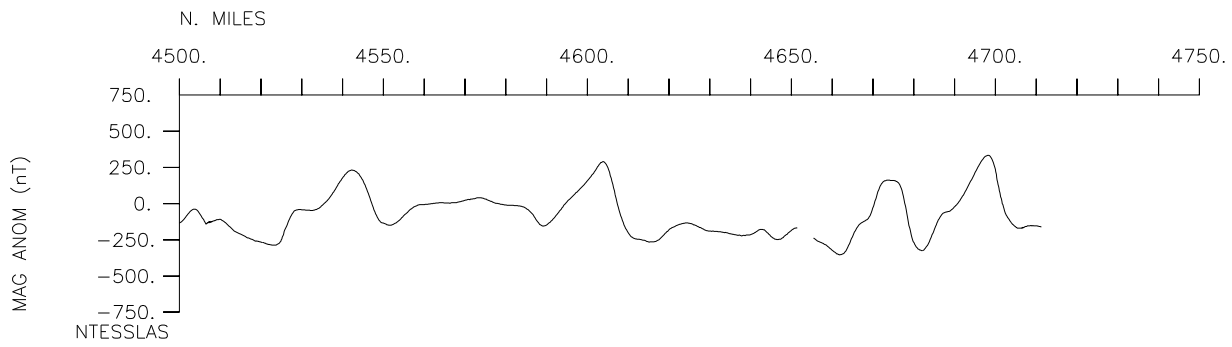
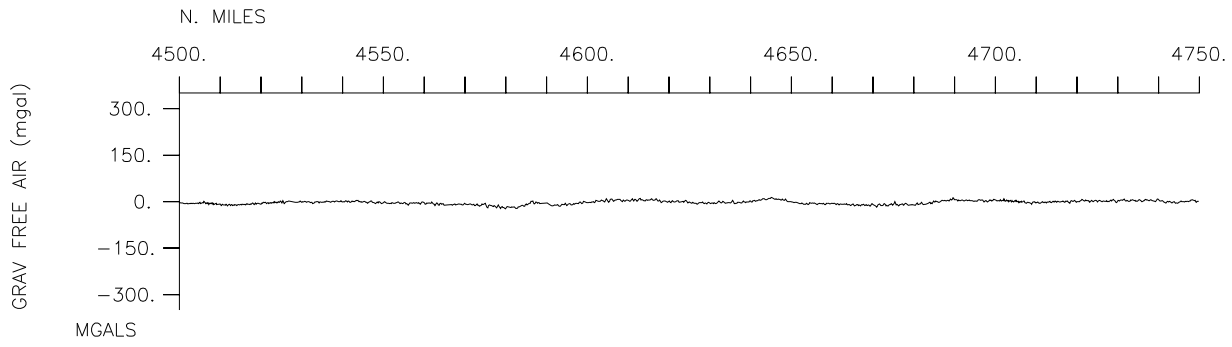


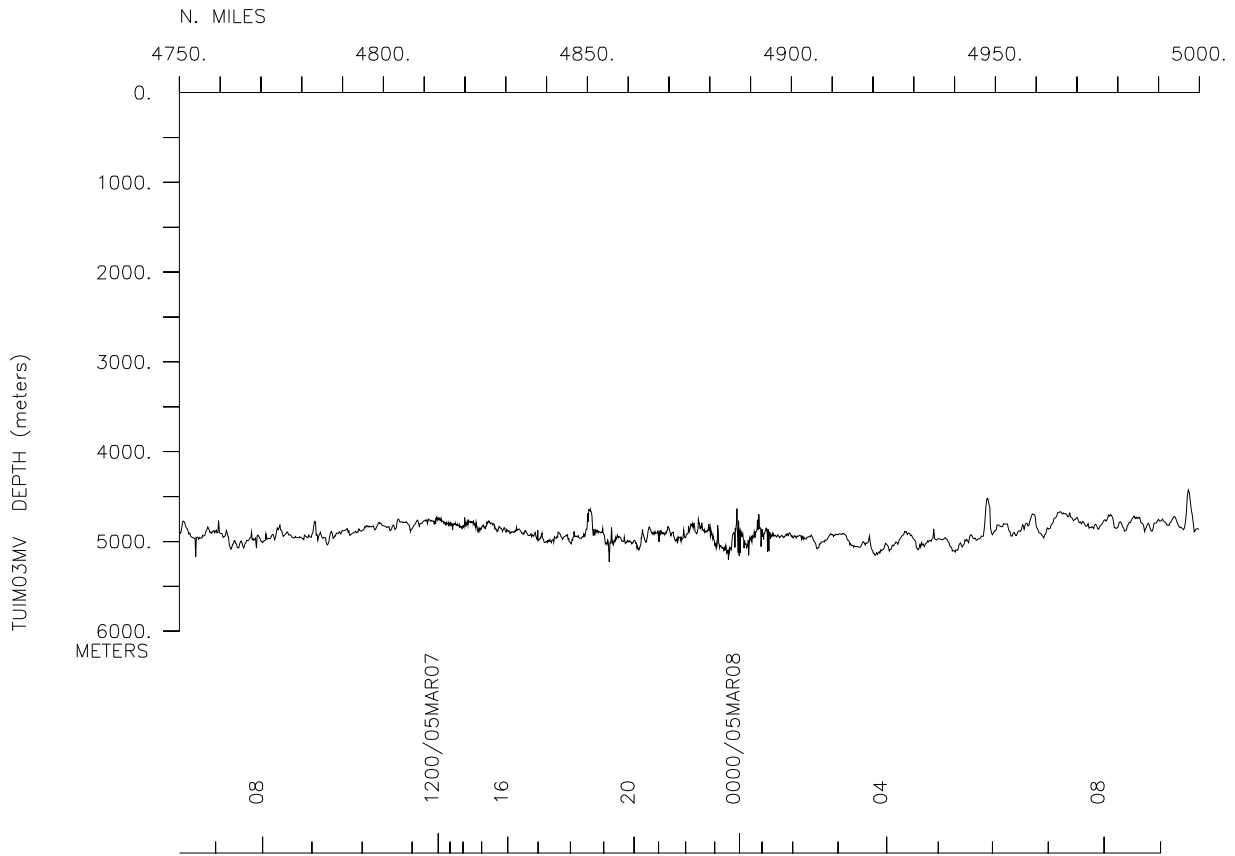
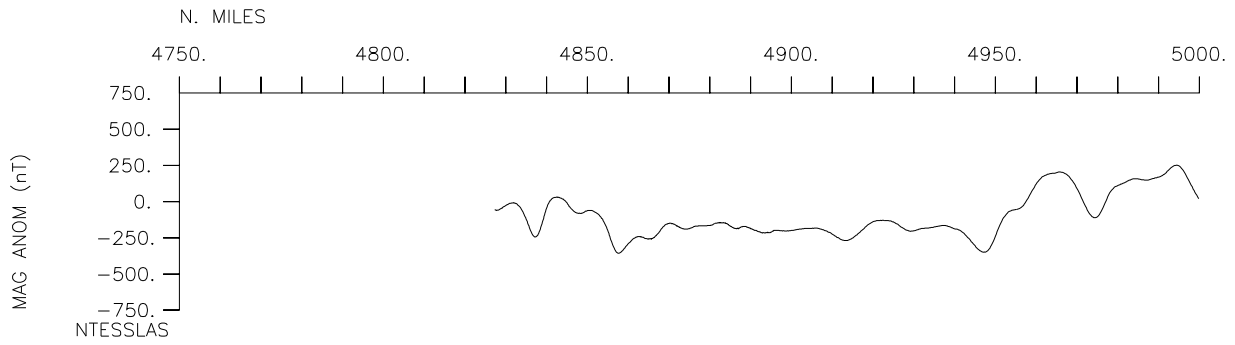
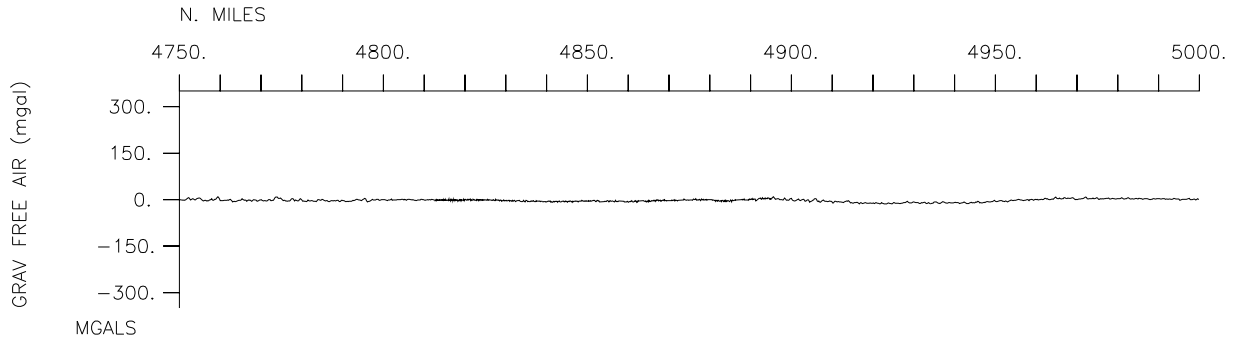


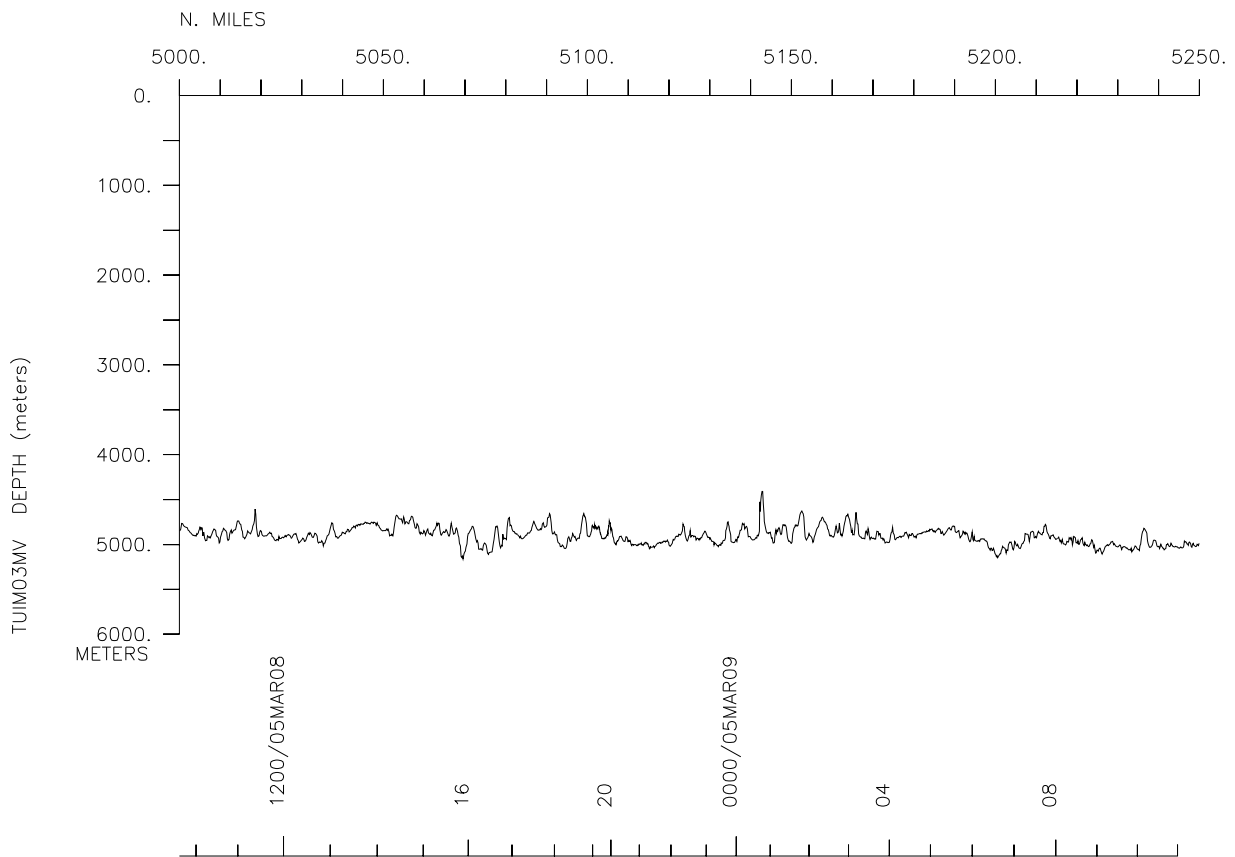
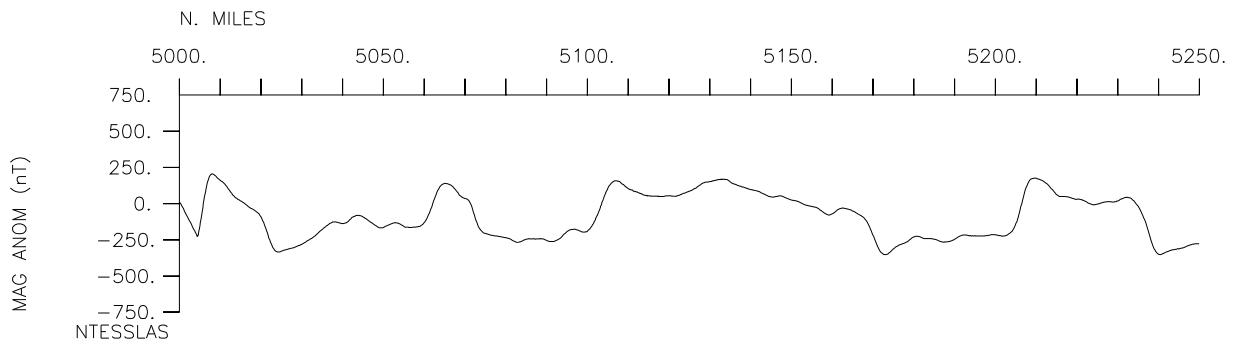
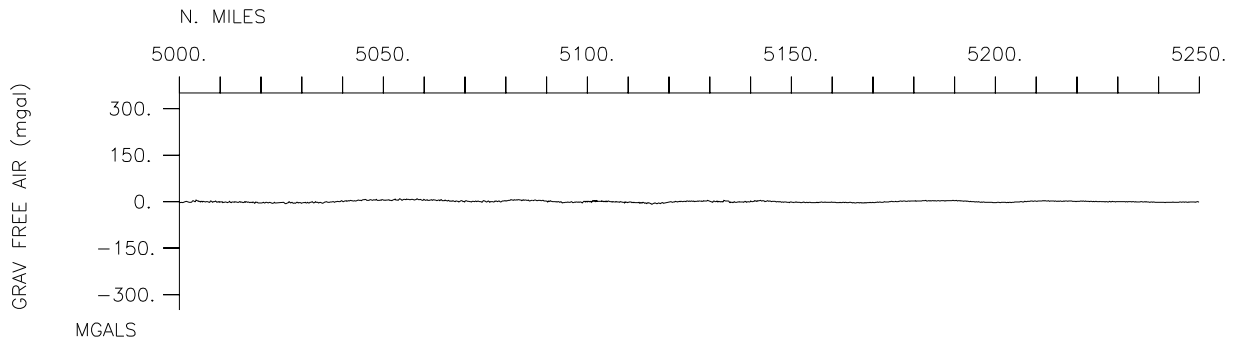


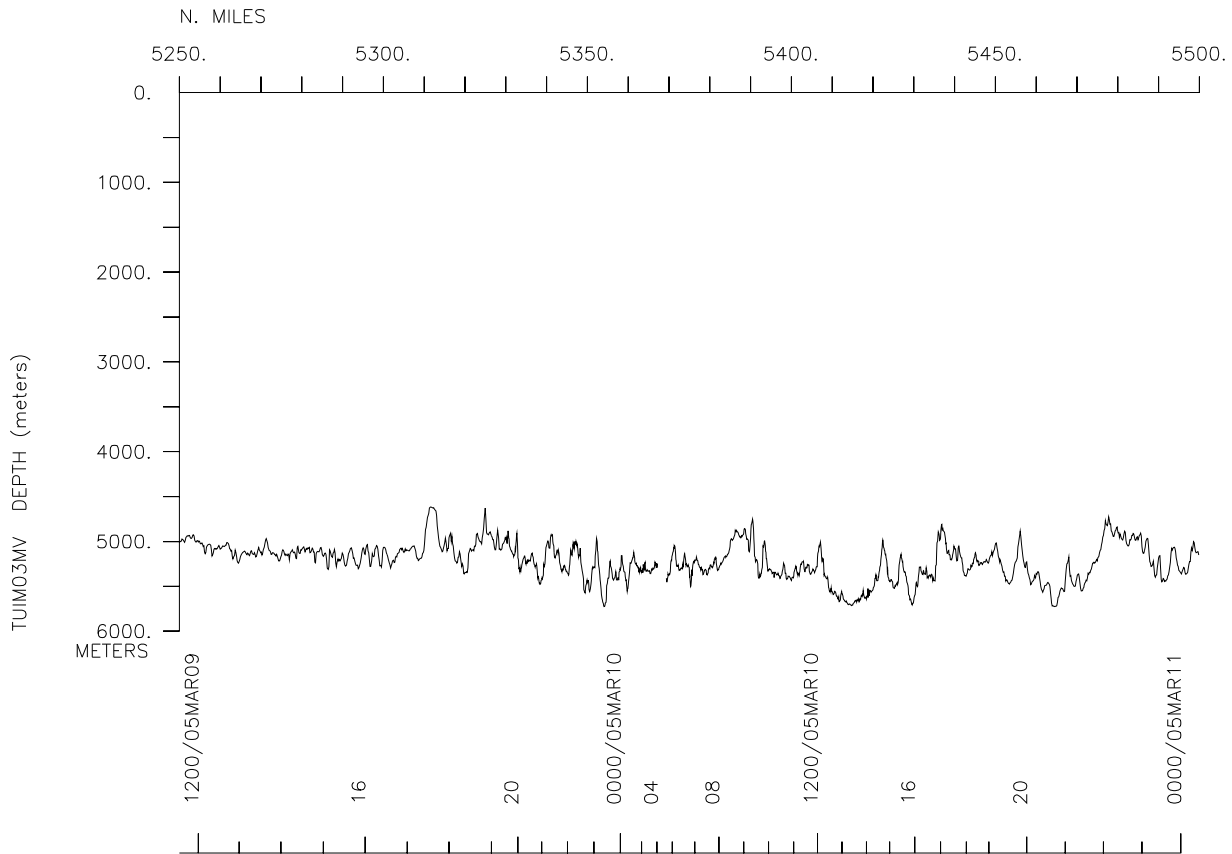
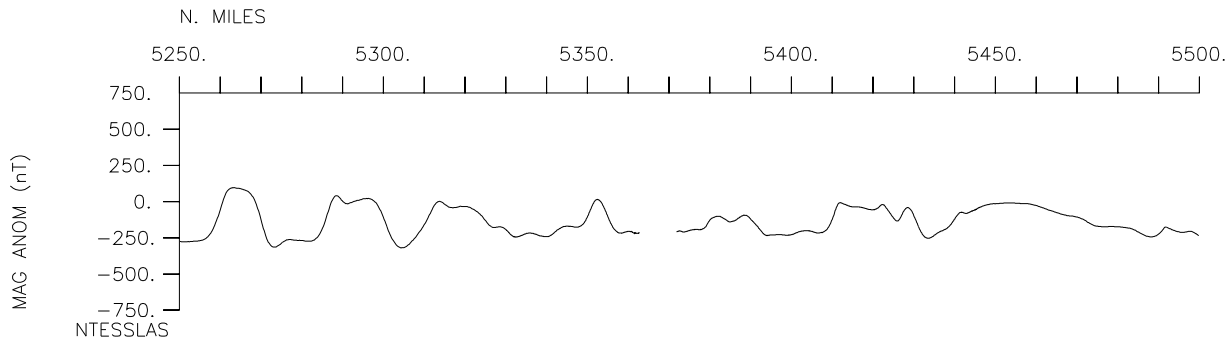
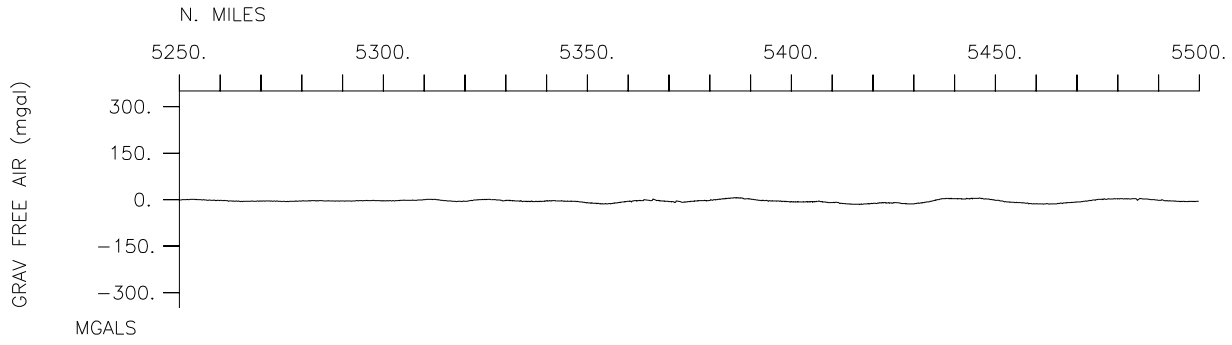


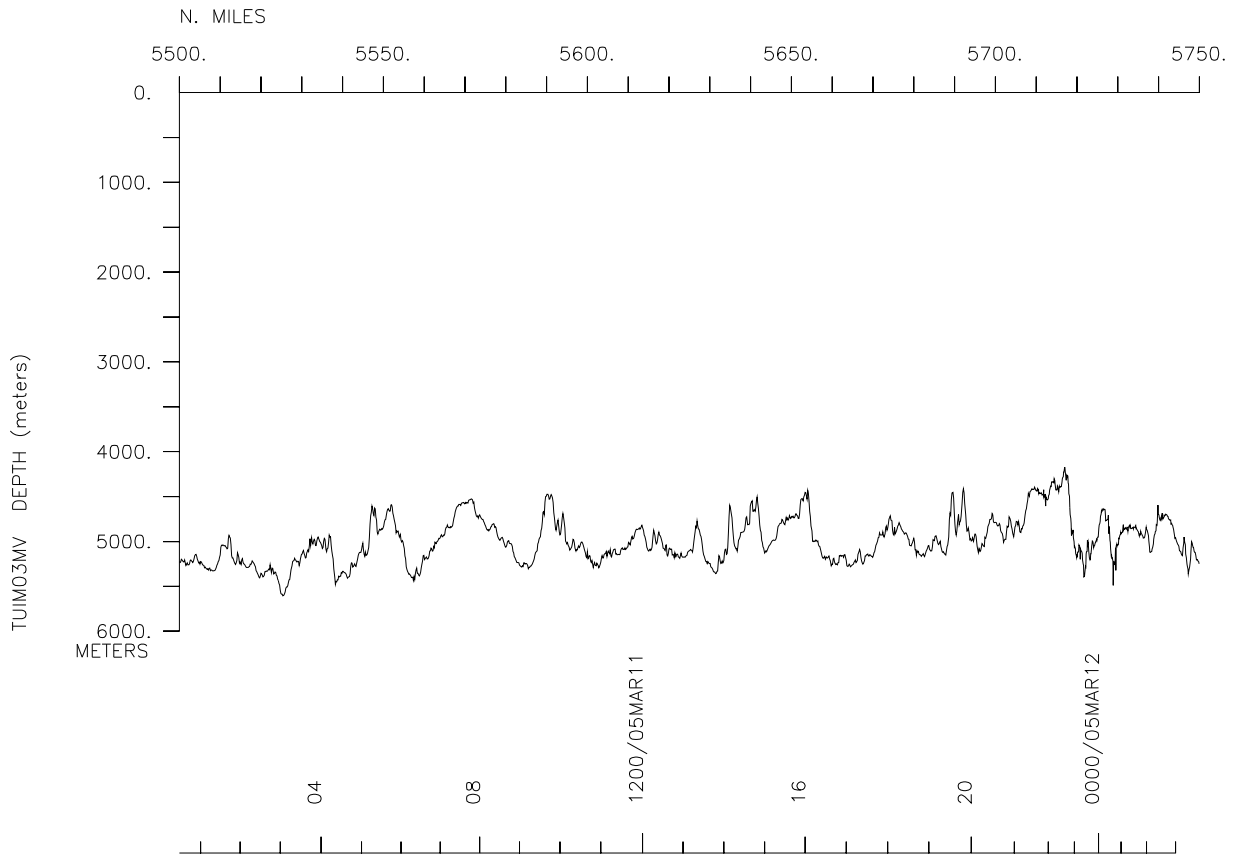
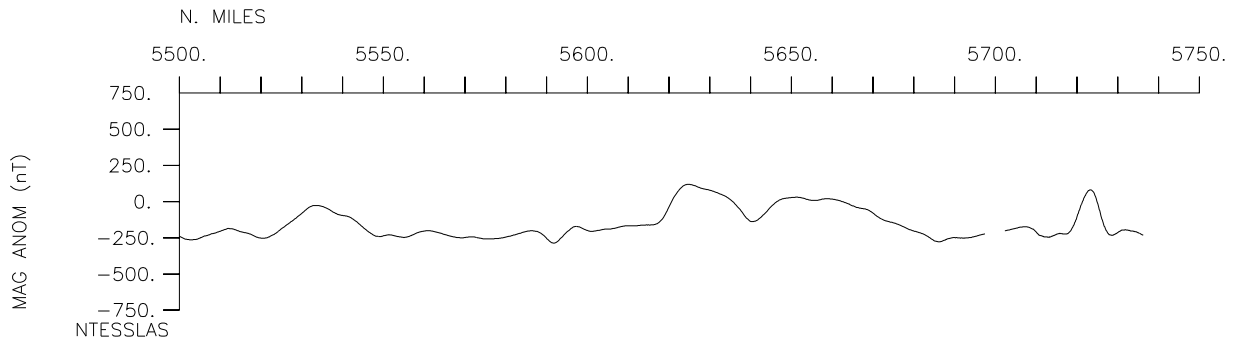
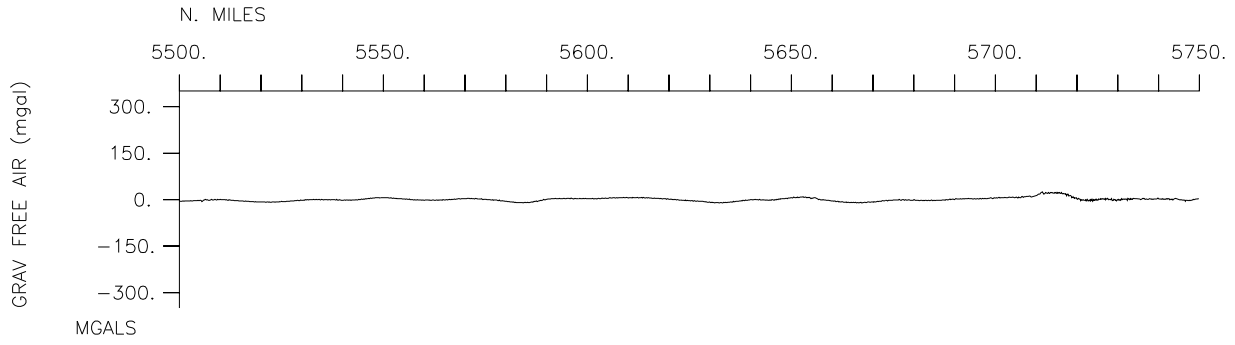


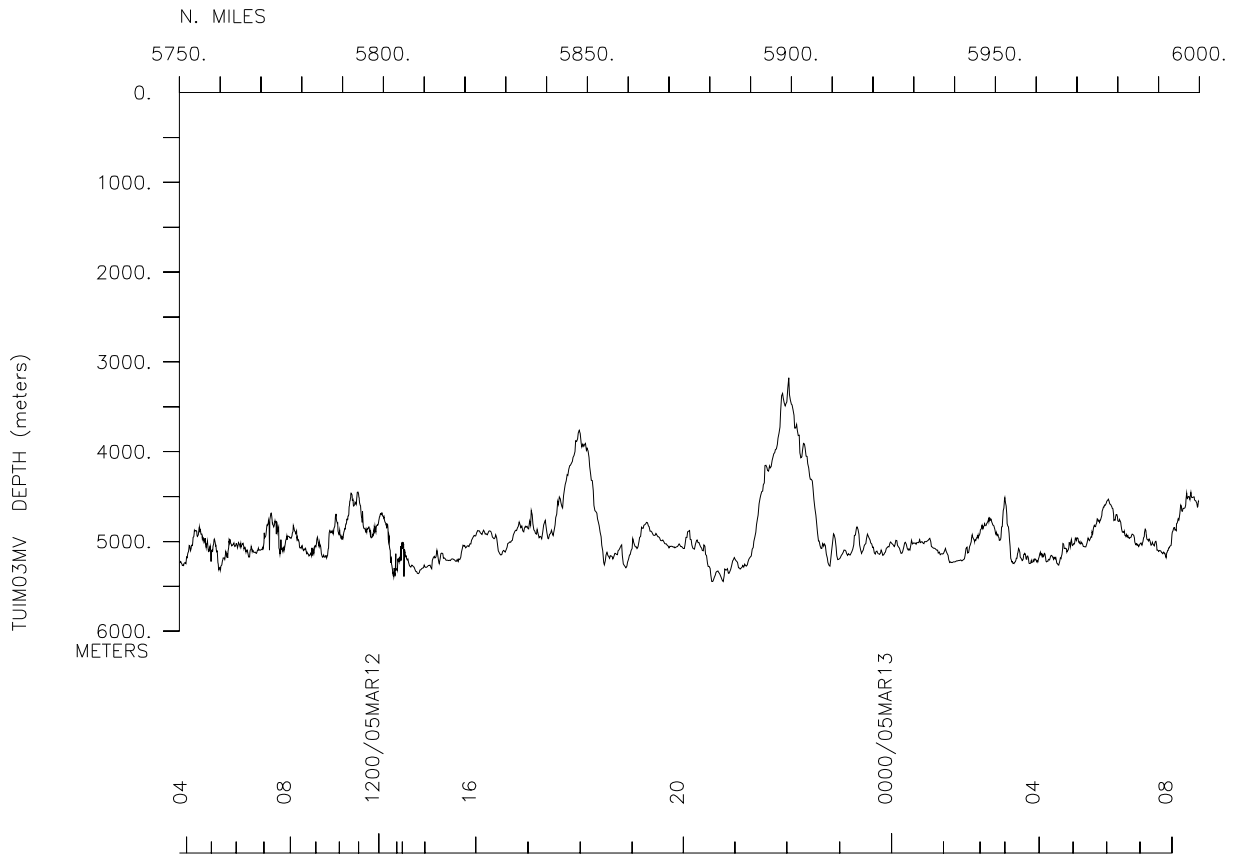
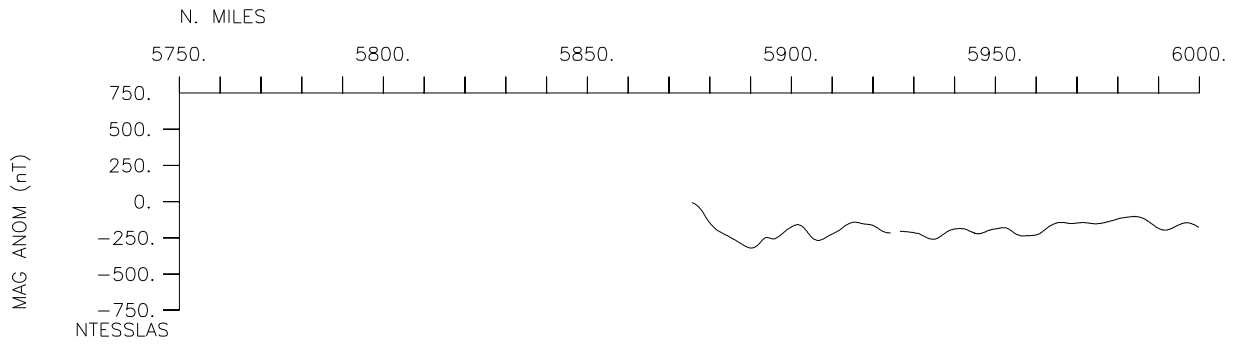
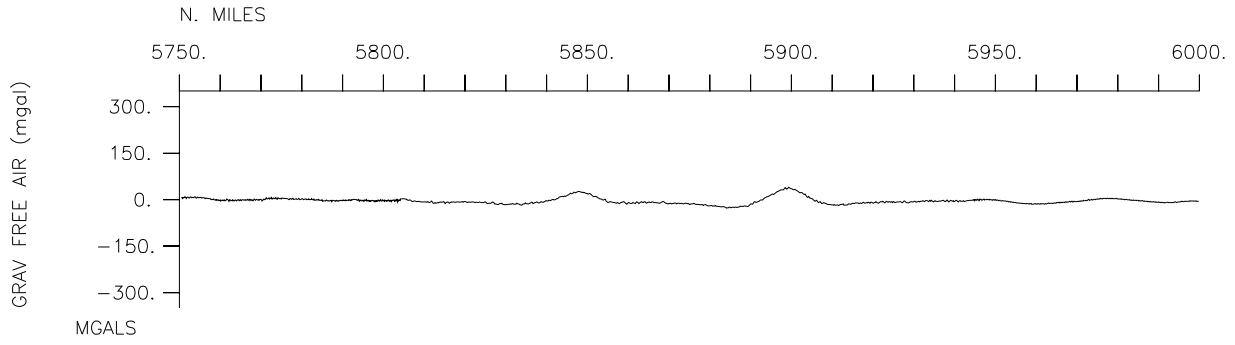


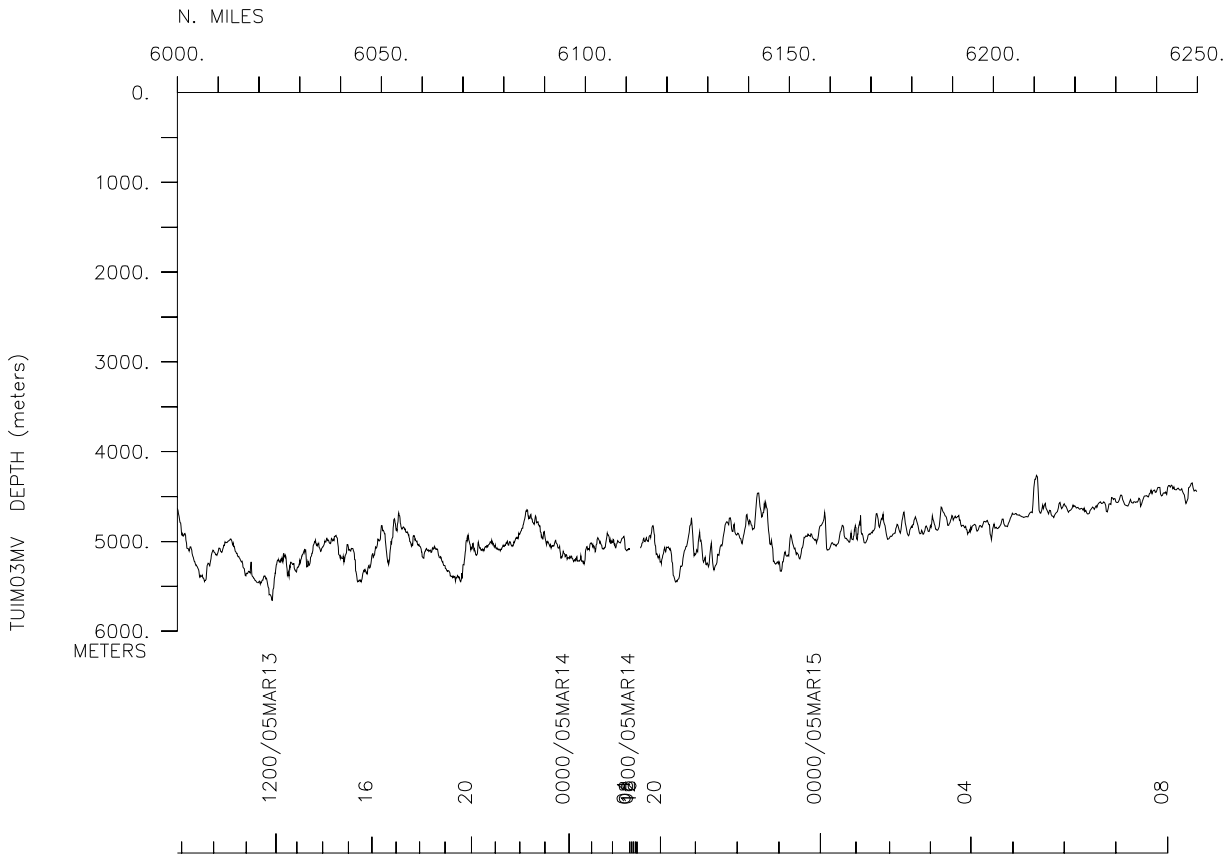
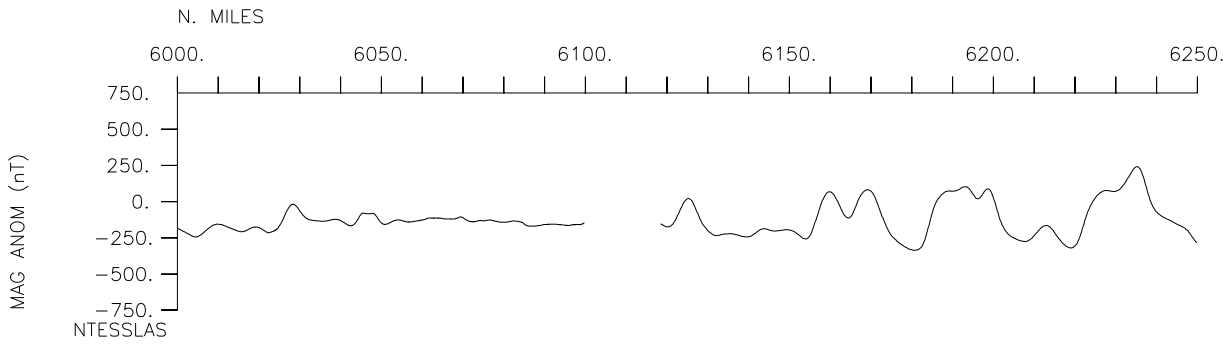
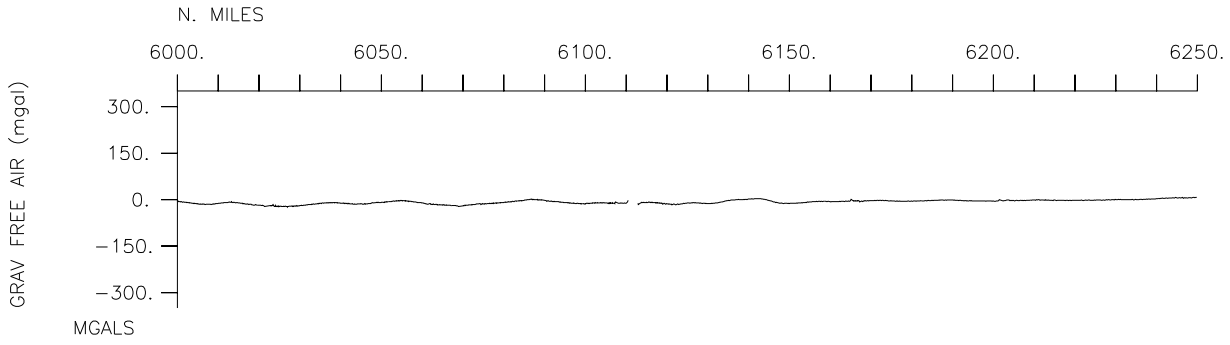


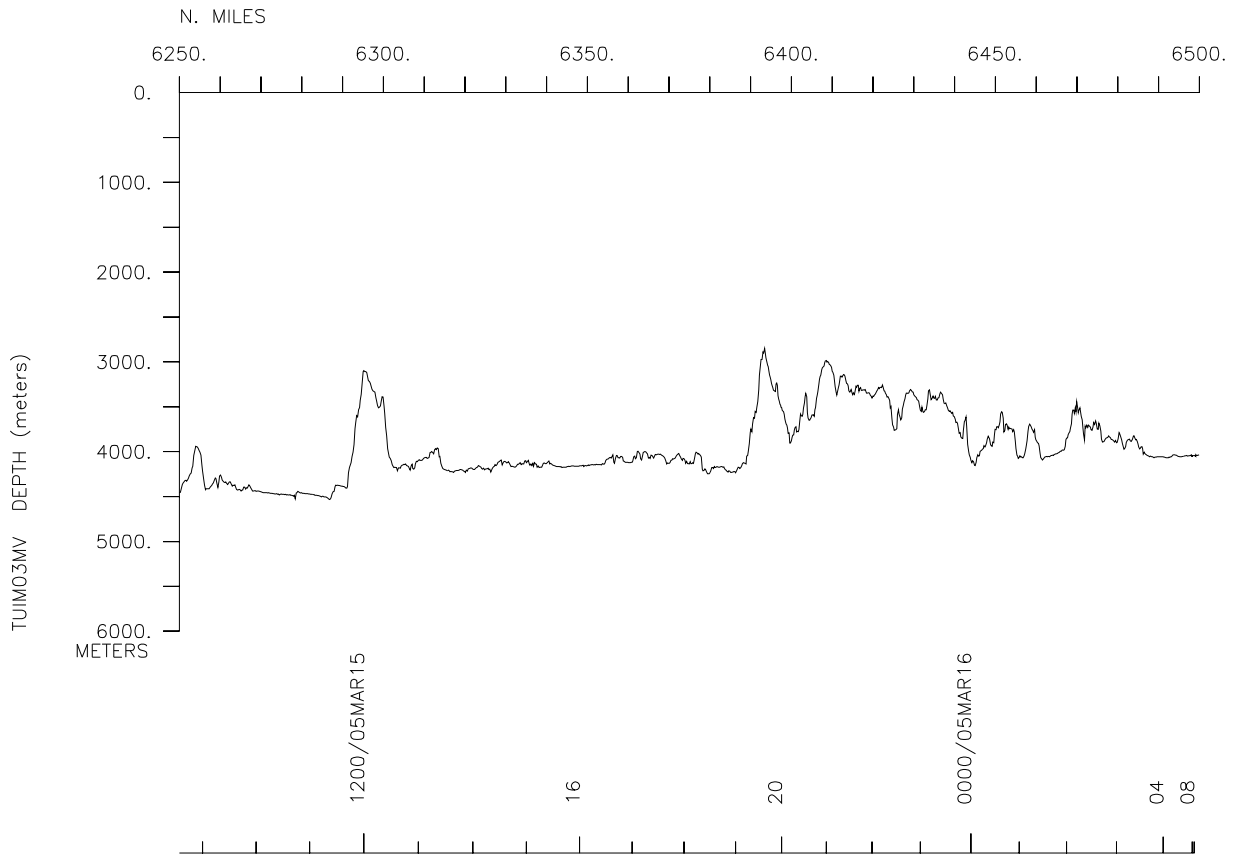
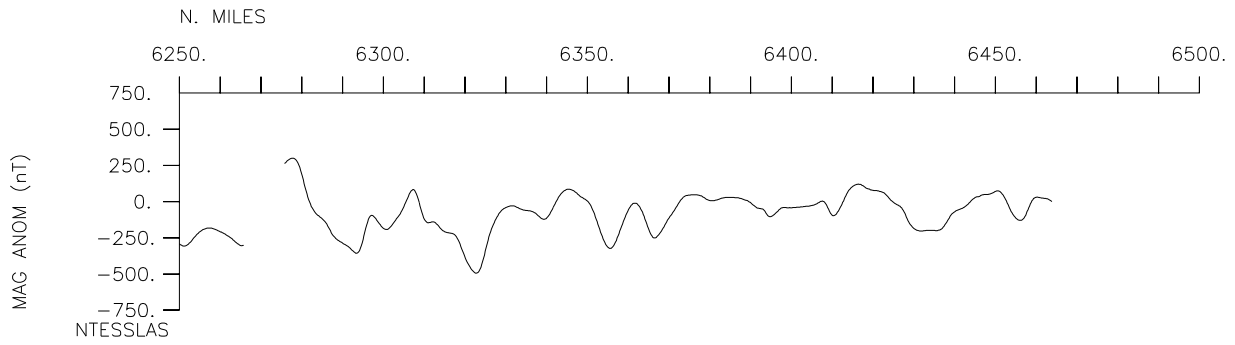
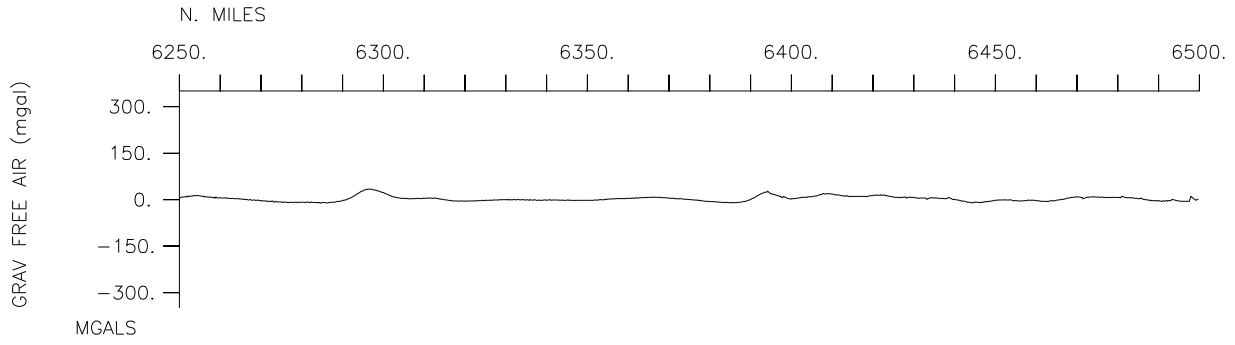


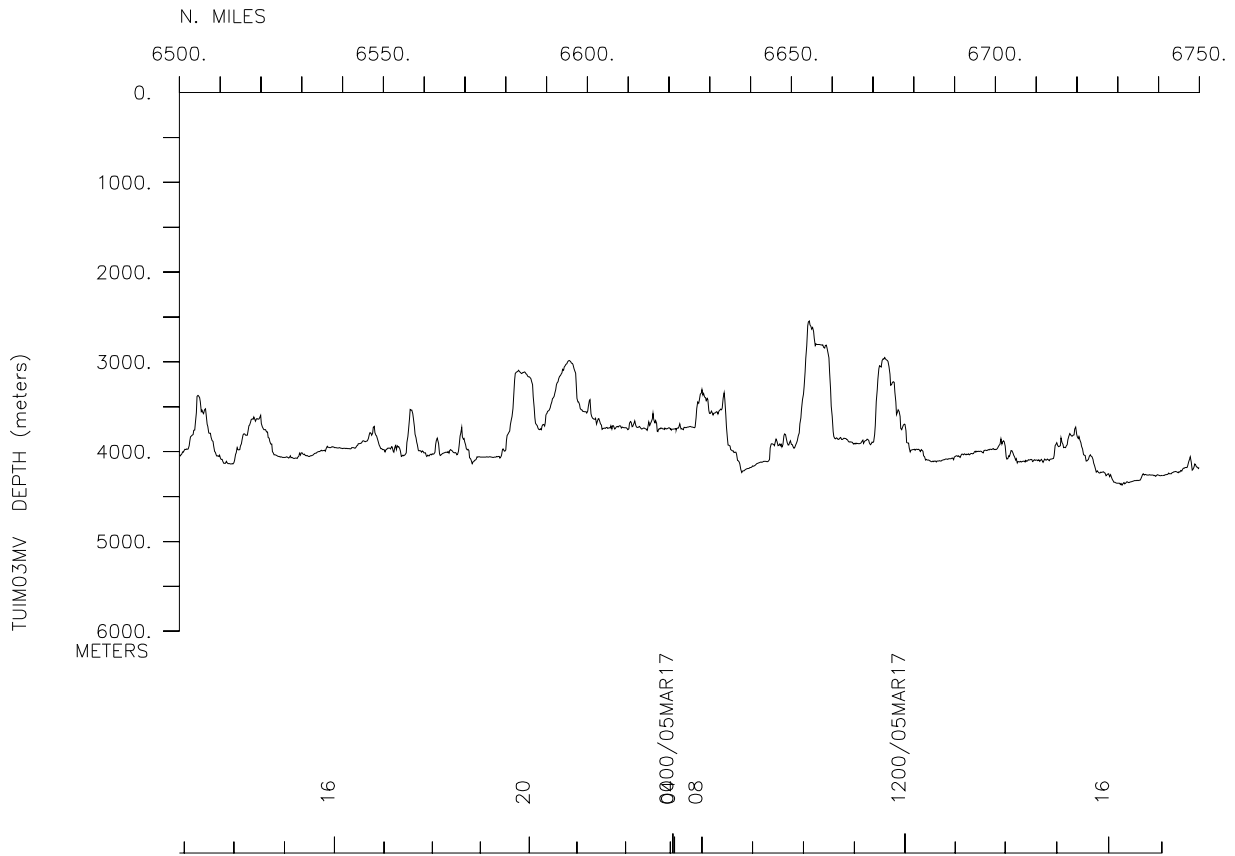
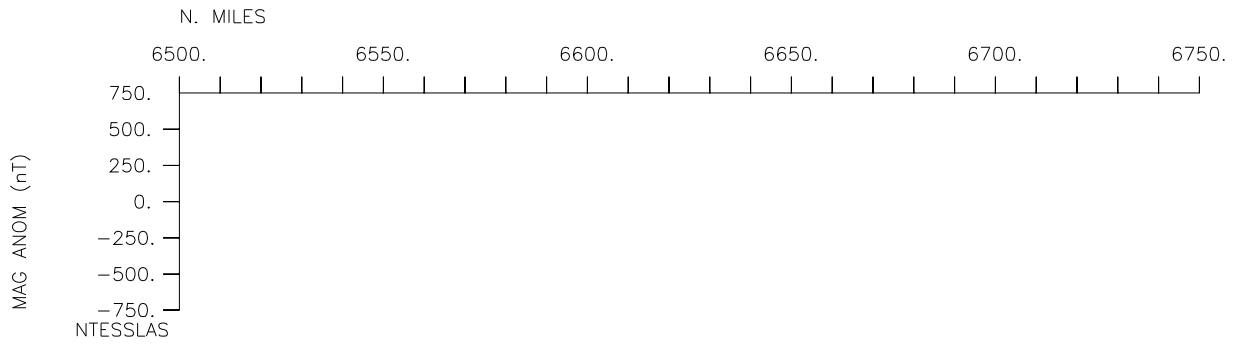
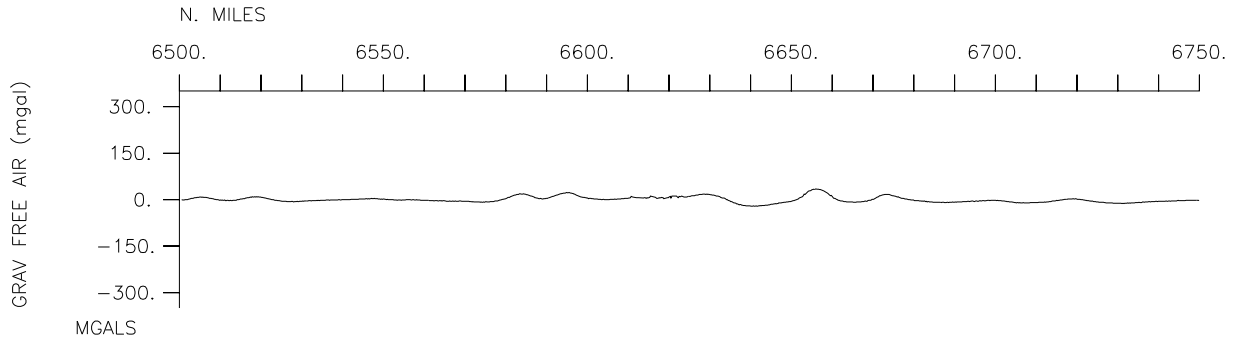


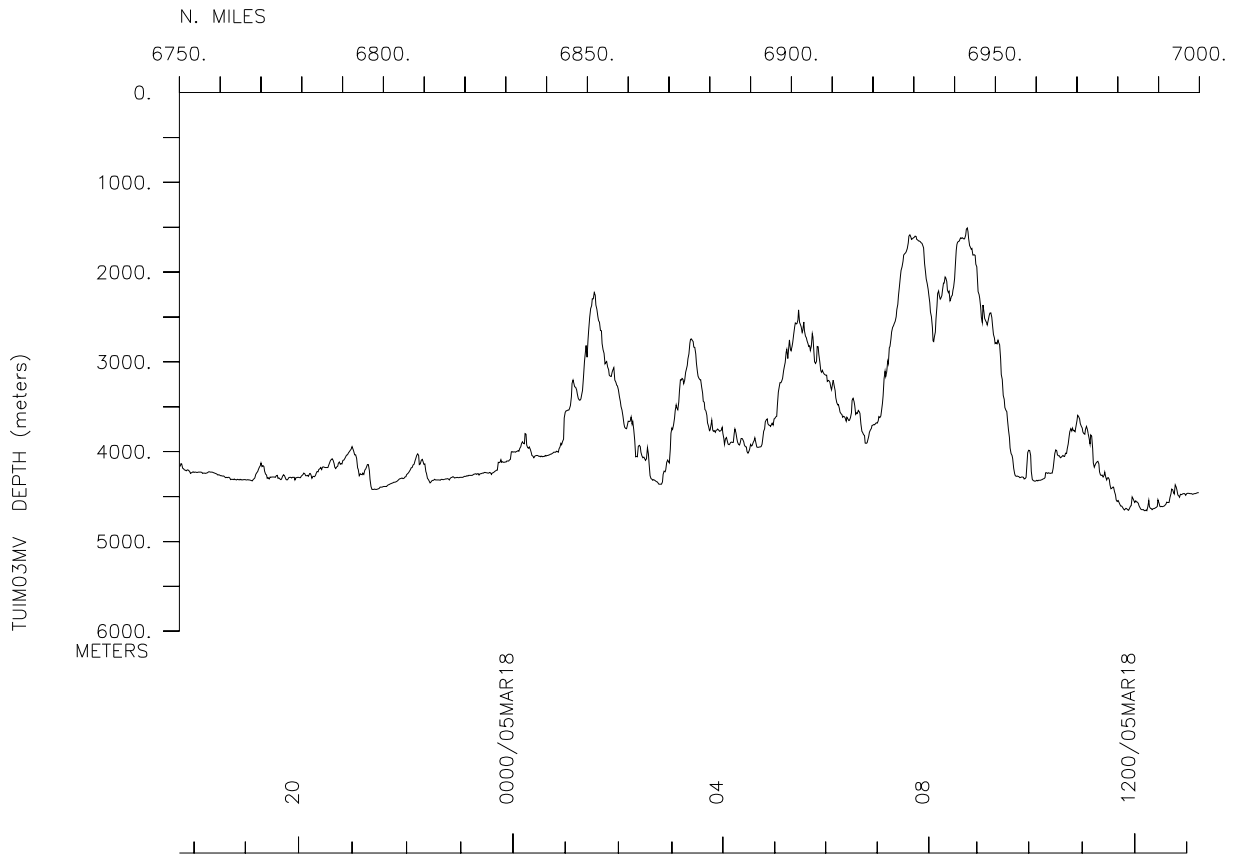
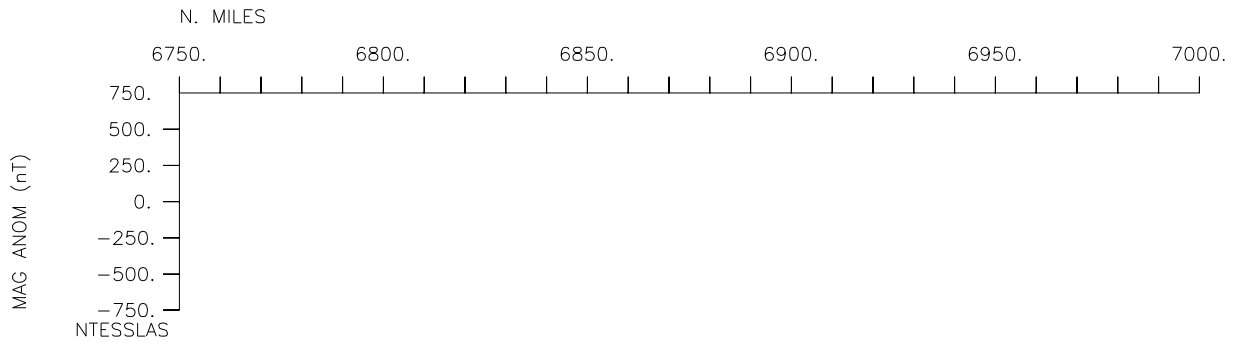
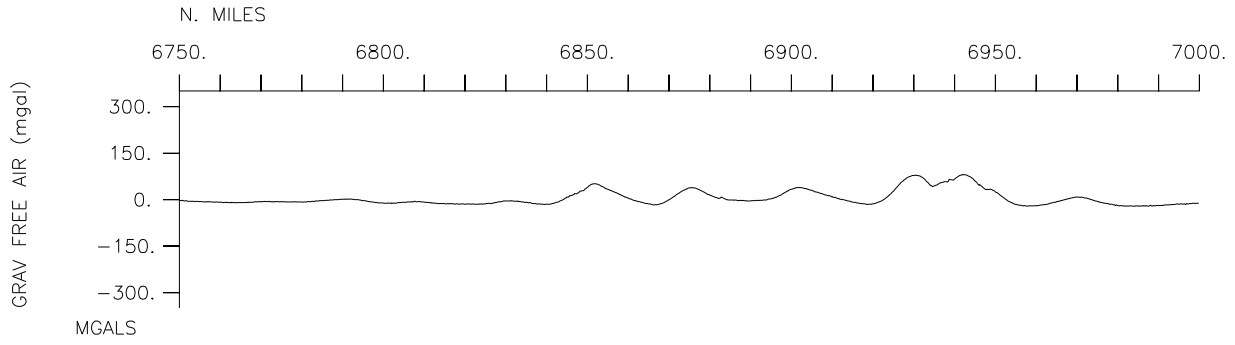


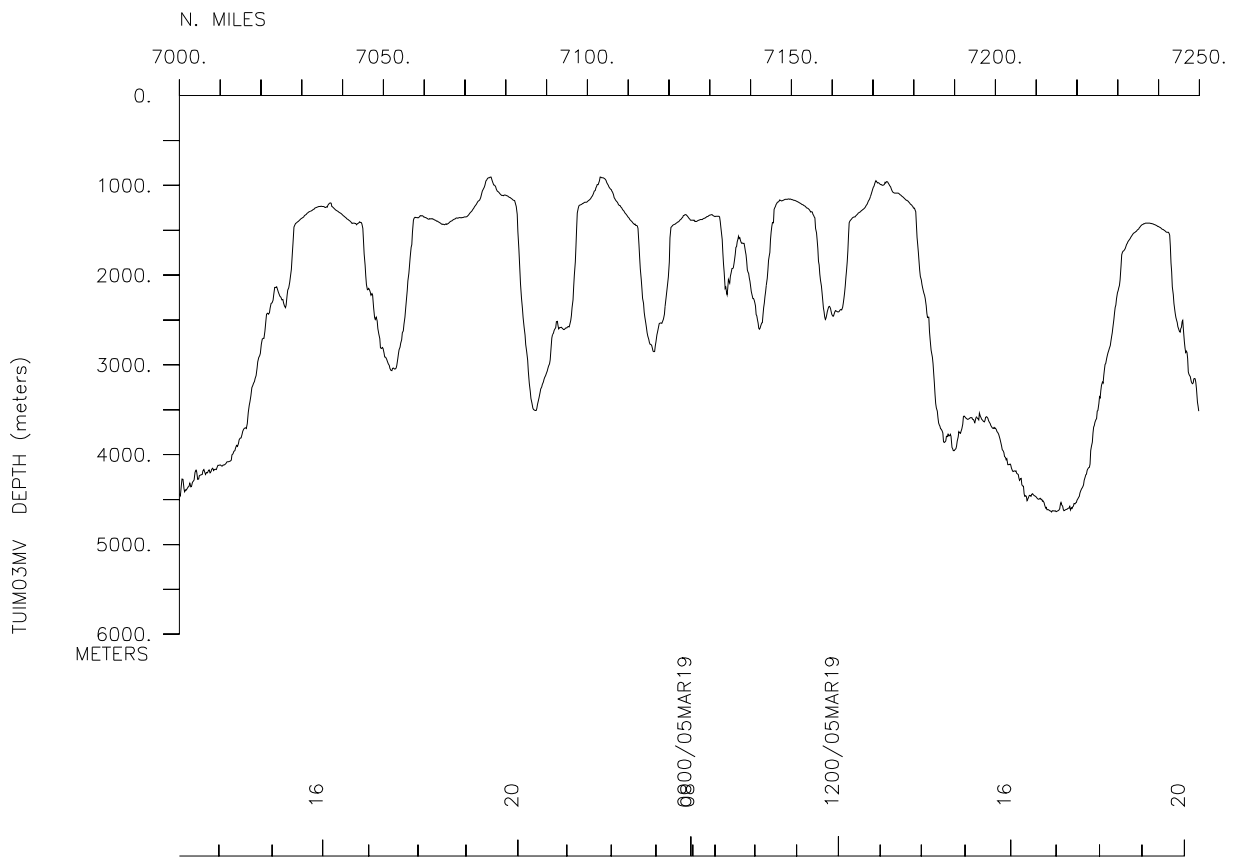
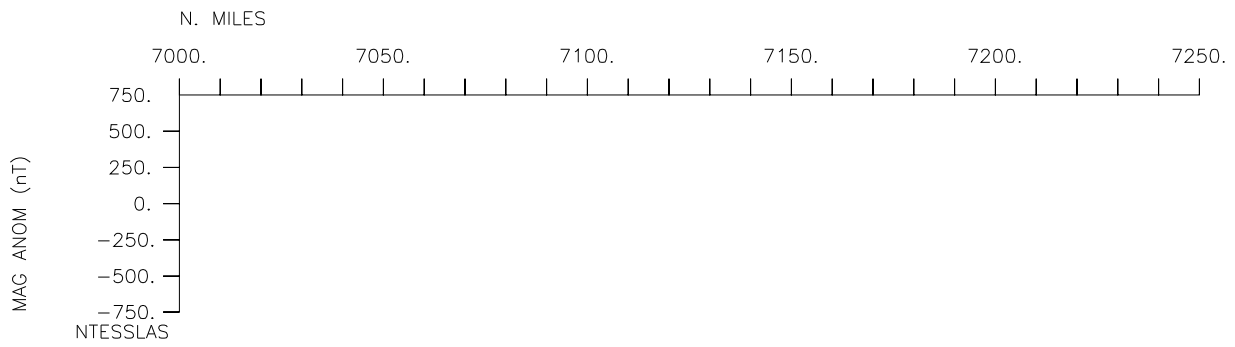
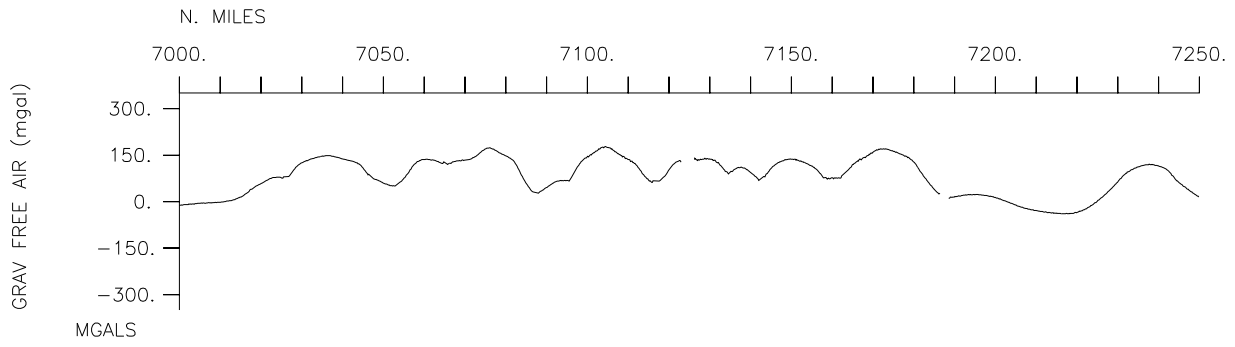


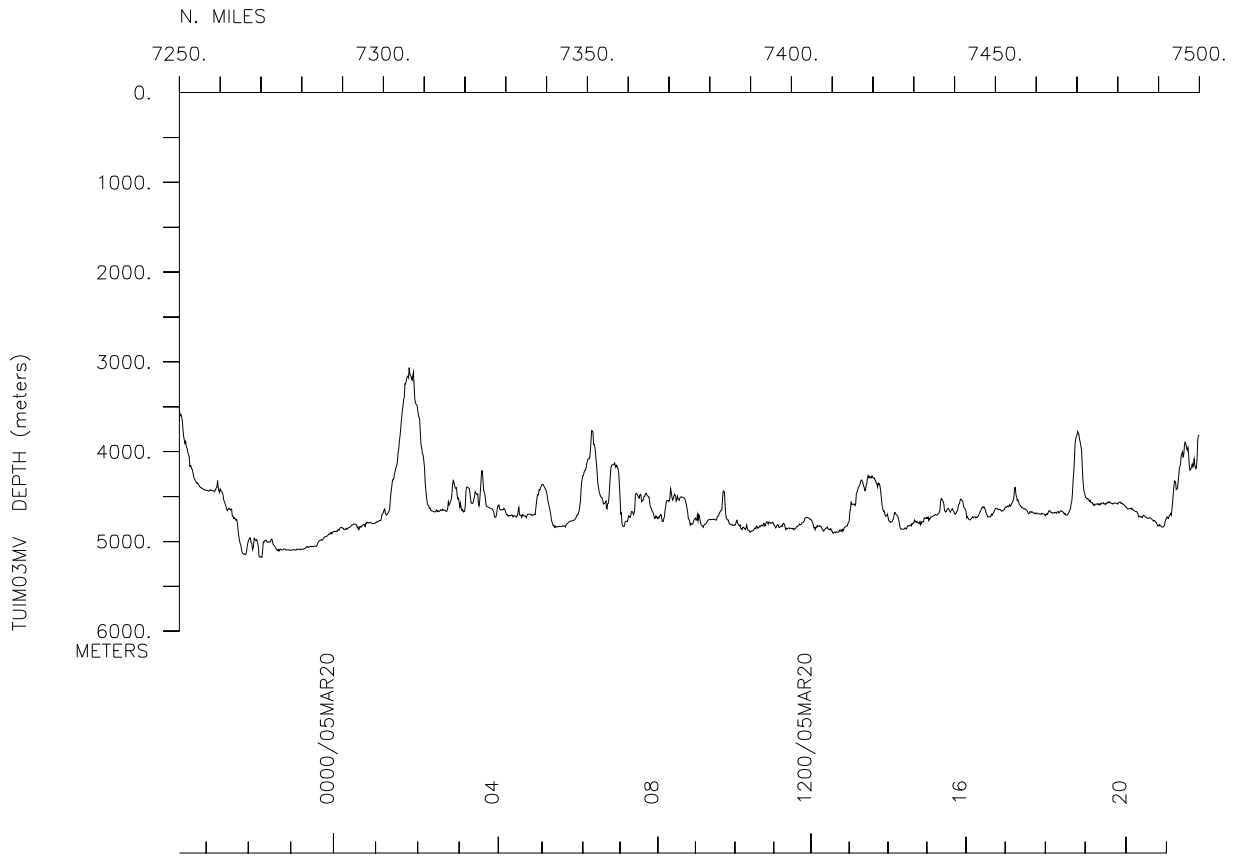
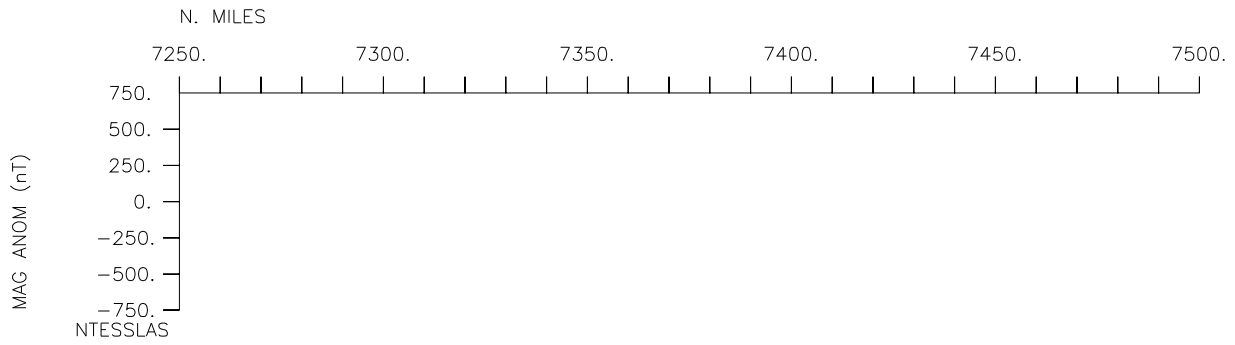
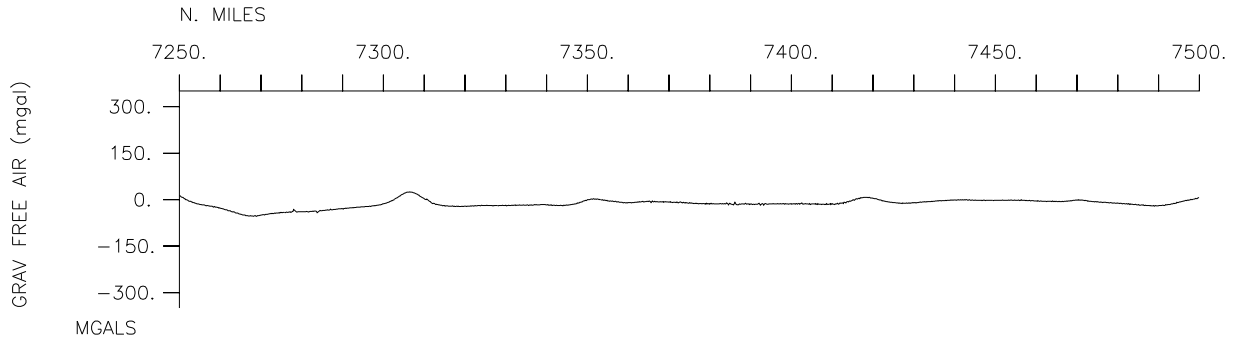


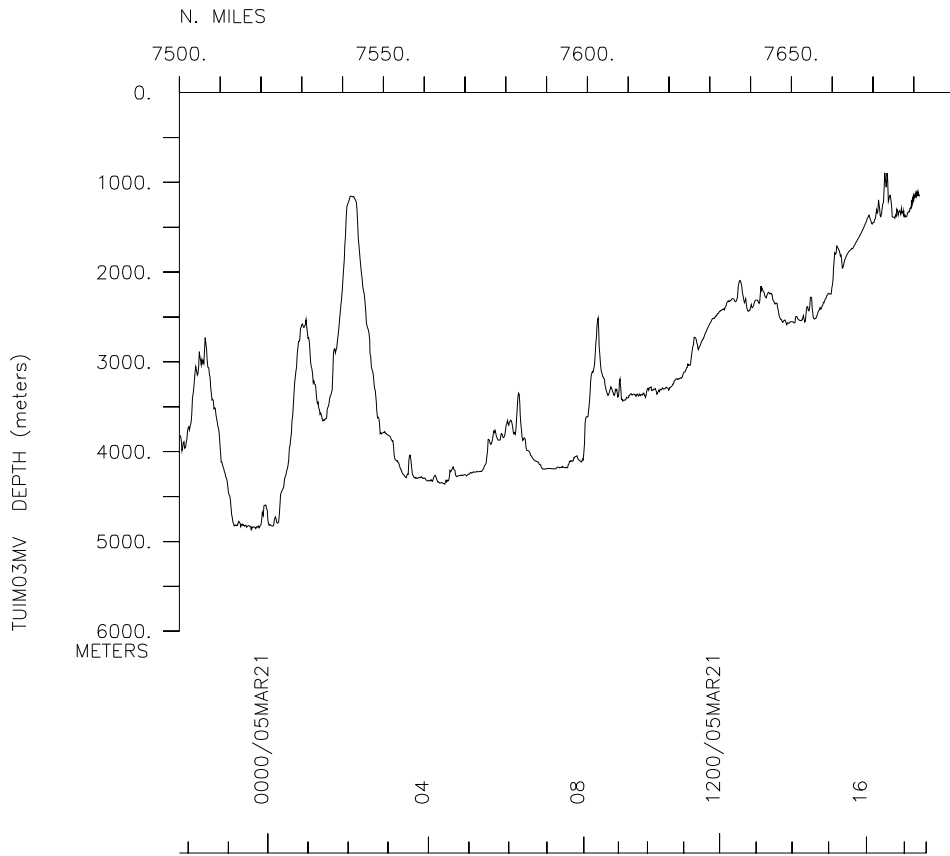
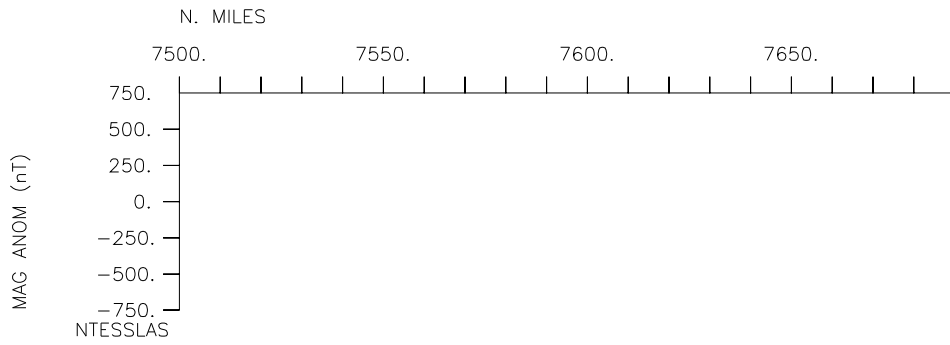
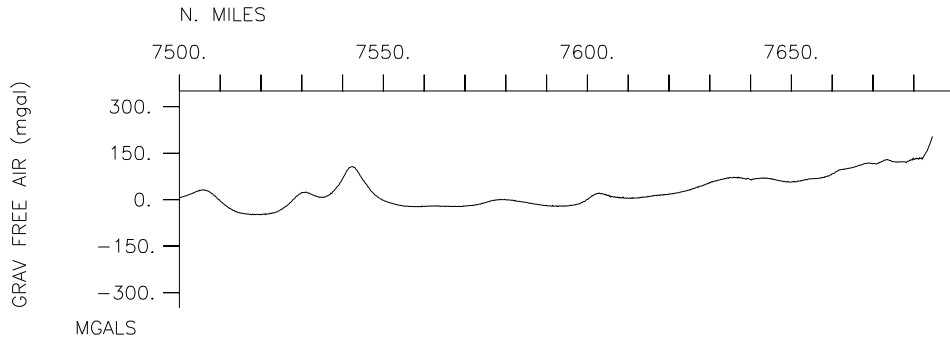












**** NO CORRECTIONS OR ADDITIONS WERE MADE TO THIS SAMPLE INDEX.
 **** IT WAS NOT RUN THROUGH THE NAVIGATION PROGRAM.
 **** USE WITH CAUTION.

PECS	BSU	LYLE,M.	Chief Scientist	BOISE STATE UNIV.	TUMI03MV
PESP	UOM	REA,D	SCIENTIST	UNIV. OF MICHIGAN	TUMI03MV
PESP	TAMU	THOMAS,D.	SCIENTIST	TEXAS A&M UNV.	TUMI03MV
PEST	UOM	STANCIN,A.	GRAD STUDENT	UNIV. OF MICHIGAN	TUMI03MV
PVEL		REA,T	OBSERVER		TUMI03MV
PEST	UOM	GLEASON, J.	GRAD STUDENT	UNIV. OF MICHIGAN	TUMI03MV
PESP	UOM	OWEN,R.	SCIENTIST	UNIV. OF MICHIGAN	TUMI03MV
PEST	UOM	HENDY, I	GRAD STUDENT	UNIV. OF MICHIGAN	TUMI03MV
PESP	USCG	OLMSTEAD,R.	TECHNICIAN	U.S. COAST GUARD	TUMI03MV
PEST	UOM	LATIMER,J.	GRAD STUDENT	UNIV. OF MICHIGAN	TUMI03MV
PESP	IUPA	HOVEN,S.	SCIENTIST	INDIANA UNIV. OF PA	TUMI03MV
PEST	IUPA	BOLYN,M.	GRAD STUDENT	INDIANA UNIV. OF PA	TUMI03MV
PESP	BSU	LIBERTY,L.	SCIENTIST	BOISE STATE UNIV.	TUMI03MV
PEST	BSU	PAUL,C.	GRAD STUDENT	BOISE STATE UNIV.	TUMI03MV
PEST	BSU	MURPHY,B.	GRAD STUDENT	BOISE STATE UNIV.	TUMI03MV
PESP	OSU	MOSER,C.	TECHNICIAN	OREGAN STATE UNIV.	TUMI03MV
PESP	USCG	HENDRICKSON,G.	TECHNICIAN	U.S. COAST GUARD	TUMI03MV
PESP	STS	KNODOR,J.	MAMMAL OBSERVER	SCRIPPS INSTITUTION	TUMI03MV
PESP	STS	HOEFER,C.	MAMMAL OBSERVER	SCRIPPS INSTITUTION	TUMI03MV
PERT	STS	PILLARD,G.	RESIDENT TECH	SCRIPPS INSTITUTION	TUMI03MV
PEST	STS	DAVIS,G.	COMPUTER TECH	SCRIPPS INSTITUTION	TUMI03MV
PESP	STS	ELLETT	SEISMIC TECH	SCRIPPS INSTITUTION	TUMI03MV

0200	100205	LGPT B	DEPART PAPEETE		17-32.35S	149-34.22W	TUMI03MV
1800	210305	LGPT E	ARRIVE PAPEETE		17-32.35S	149-34.22W	TUMI03MV
0200	100205	LBUW B	UNDERWAY LOG	GDC	17-32.35S	149-34.22W	TUMI03MV
0000	190205	LBUW E	PAGES 1-79	BSU	17-32.35S	149-34.22W	TUMI03MV
0500	100205	MGDR B	MAGNETOMETER	GDC	17-49.24S	149-44.19W	TUMI03MV
0200	160305	MGDR E	COMPUTER LOGGED	GDC	28-02.81S	140-17.55W	TUMI03MV
0323	120205	SPDL B	SEISMIC RELECTION	BSU	26-31.31S	151-18.22W	TUMI03MV
2121	140305	SPDL E	LINES 1-	GDC	31-35.34S	143-11.99W	TUMI03MV
1809	150205	COPS B	PISTON CORE #1 4836m	OSU	40-00.53S	154-02.60W	TUMI03MV
2315	150205	C0PG E	Core #1 on deck DK	OSU	40-00.53S	154-02.60W	TUMI03MV
2153	190205	COPS B	PISTON CORE	OSU	50-27.14S	163-07.63W	TUMI03MV
0200	200205	C0PG X	PRETRIP	OSU	50-27.14S	163-07.63W	TUMI03MV
0628	200205	COPS B	PISTON CORE #2 4999m	OSU	50-27.14S	163-07.62W	TUMI03MV
1131	200205	C0PG E		OSU	50-27.14S	163-07.63W	TUMI03MV
2023	230205	COPS B	PISTON CORE #3	OSU	50-51.90S	151-58.01W	TUMI03MV
2326	230205	C0PG E	OSU	OSU	50-51.89S	151-58.01W	TUMI03MV
1941	240205	COPS B	PISTON CORE #4 4243m	OSU	50-20.40S	148-07.55W	TUMI03MV
0037	250205	C0PG E		OSU	50-22.50S	148-08.24W	TUMI03MV
1619	260205	COPS B	PISTON CORE #5	OSU	49-23.09S	141-59.73W	TUMI03MV
2111	260205	C0PG X	PRETRIP	OSU	49-23.10S	141-59.71W	TUMI03MV
2250	260205	COGV B	GRAV-CORE #6 4832m	OSU	49-23.09S	141-59.72W	TUMI03MV
0315	270205	COGV E		OSU	49-23.09S	141-59.72W	TUMI03MV
0220	280205	COPS B	PISTON CORE #7 5362m	OSU	46-26.95S	139-26.82W	TUMI03MV
0505	280205	C0PG E		OSU	46-26.95S	139-26.83W	TUMI03MV
0104	020305	COPS B	PISTON CORE #8 4731m	OSU	47-04.21S	133-51.46W	TUMI03MV
0538	020305	C0PG X	WIRE PARTED	OSU	47-04.21S	133-51.46W	TUMI03MV
0617	030305	COPS B	PISTON CORE #9 4781m	OSU	46-57.53S	133-52.50W	TUMI03MV
1154	030305	C0PG E		OSU	46-57.53S	133-52.50W	TUMI03MV

1803	050305	COGV	B	GRAV-CORE #10	5010m	OSU	42-25.79S	136-58.66W	TUMI03MV
2219	050305	COGV	E			OSU	42-25.79S	136-58.66W	TUMI03MV
0200	100305	COGV	B	GRAV-CORE #11	5335m	OSU	39-06.06S	139-42.41W	TUMI03MV
0452	100305	COGV	E			OSU	39-06.07S	139-42.41W	TUMI03MV
1408	120305	COGV	B	GRAV-CORE #12		OSU	34-57.71S	141-59.73W	TUMI03MV
1412	120305	COGV	X	WEATHER ABORTED		OSU	34-57.72S	141-59.76W	TUMI03MV
0250	140305	COGV	B	GRAV-CORE #13	5144m	OSU	31-42.06S	143-30.23W	TUMI03MV
1929	130305	COGV	E			OSU	31-39.16S	143-36.53W	TUMI03MV
0643	140305	COGV	B	GRAV-CORE #14	5162m	OSU	31-42.20S	143-30.33W	TUMI03MV
0900	140305	COGV	E			OSU	31-42.20S	143-30.34W	TUMI03MV
1206	140305	COPS	B	PISTON CORE 15	5177m	OSU	31-42.20S	143-30.33W	TUMI03MV
1757	140305	C0PG	E			OSU	31-42.20S	143-30.33W	TUMI03MV
0526	160305	COPS	B	PISTON CORE 16	4090m	OSU	28-05.15S	140-14.14W	TUMI03MV
1012	160305	C0PG	E			OSU	28-05.15S	140-14.14W	TUMI03MV
0050	170305	COPS	B	PISTON CORE 17	3778m	OSU	27-08.68S	142-01.64W	TUMI03MV
0518	170305	C0PG	E			OSU	27-08.68S	142-01.64W	TUMI03MV
2355	180305	COGV	B	GRAV-CORE #18	1390m	OSU	25-11.24S	148-17.27W	TUMI03MV
0057	190305	COGV	E			OSU	25-11.25S	148-17.26W	TUMI03MV
0318	190305	COPS	B	PC #19	1390m	OSU	25-11.25S	148-17.26W	TUMI03MV
0526	190305	C0PG	E			OSU	25-11.25S	148-17.26W	TUMI03MV
0423	100205	0	BTXP	MK21 # 1	Fast_Deep	GDC	17-42.22S	149-42.91W	g TUIM03MV
0158	110205	0	BTXP	MK21 # 2	Fast_Deep	GDC	21-49.55S	150-27.04W	g TUIM03MV
0657	120205	0	BTXP	MK21 # 3	Fast_Deep	GDC	27-06.14S	151-24.71W	g TUIM03MV
0704	120205	0	BTXP	MK21 # 4	Fast_Deep	GDC	27-07.33S	151-24.93W	g TUIM03MV
0709	120205	0	BTXP	MK21 # 5	Fast_Deep	GDC	27-08.12S	151-25.08W	g TUIM03MV
2217	120205	0	BTXP	MK21 # 6	Fast_Deep	GDC	29-37.85S	151-53.22W	g TUIM03MV
0100	140205	0	BTXP	MK21 # 7	Fast_Deep	GDC	34-02.68S	152-45.38W	g TUIM03MV
0321	150205	0	BTXP	MK21 # 8	Fast_Deep	GDC	38-19.42S	153-38.39W	g TUIM03MV
2213	160205	0	BTXP	MK21 # 9	Fast_Deep	GDC	42-39.08S	156-27.90W	g TUIM03MV
2221	160205	0	BTXP	MK21 # 10	Fast_Deep	GDC	42-40.21S	156-28.96W	g TUIM03MV
0524	180205	0	BTXP	MK21 # 11	Fast_Deep	GDC	47-01.39S	160-46.28W	g TUIM03MV
0635	190205	0	BTXP	MK21 # 12	Fast_Deep	GDC	50-16.10S	163-33.93W	g TUIM03MV
2332	220205	0	BTXP	MK21 # 13	Fast_Deep	GDC	50-51.93S	152-10.04W	g TUIM03MV
0403	270205	0	BTXP	MK21 # 14	Fast_Deep	GDC	49-20.37S	141-57.29W	g TUIM03MV
1207	280205	0	BTXP	MK21 # 15	Fast_Deep	GDC	46-30.24S	139-23.46W	g TUIM03MV
1217	280205	0	BTXP	MK21 # 16	Fast_Deep	GDC	46-31.18S	139-24.18W	g TUIM03MV
1936	030305	0	BTXP	MK21 # 17	Fast_Deep	GDC	46-07.79S	134-18.24W	g TUIM03MV
0113	060305	0	BTXP	MK21 # 18	Fast_Deep	GDC	42-20.50S	136-36.40W	g TUIM03MV
0048	090305	0	BTXP	MK21 # 19	Fast_Deep	GDC	38-00.97S	135-14.93W	g TUIM03MV
2210	100305	0	BTXP	MK21 # 20	Fast_Deep	GDC	38-29.47S	140-08.97W	g TUIM03MV
0004	130305	0	BTXP	MK21 # 21	Fast_Deep	GDC	33-19.94S	143-19.42W	g TUIM03MV
2015	140305	0	BTXP	MK21 # 22	Fast_Deep	GDC	31-39.58S	143-23.31W	g TUIM03MV
2007	150305	0	BTXP	MK21 # 23	Fast_Deep	GDC	28-40.59S	139-24.96W	g TUIM03MV
1901	170305	0	BTXP	MK21 # 24	Fast_Deep	GDC	25-56.14S	144-21.40W	g TUIM03MV
2005	180305	0	BTXP	MK21 # 25	Fast_Deep	GDC	25-05.00S	148-30.24W	g TUIM03MV
2027	180305	0	BTXP	MK21 # 26	Fast_Deep	GDC	25-03.66S	148-32.31W	g TUIM03MV
2012	200305	0	BTXP	MK21 # 27	Fast_Deep	GDC	20-20.67S	148-52.46W	g TUIM03MV
2022	200305	0	BTXP	MK21 # 28	Fast_Deep	GDC	20-18.91S	148-52.58W	g TUIM03MV