

*Report and Index of
Underway Marine Geophysical Data*

La Perouse Expedition

Leg 1

(LPRS01RR)

R/V Revelle

(Issued September 2002)

Ports:

San Diego, California (8 June 2002)

to

Newport, Oregon (22 June 2002)

Chief Scientist: David Chadwell
Scripps Institution of Oceanography
dchadwell@ucsd.edu

Computer Tech - Bill French
Resident Marine Tech – Tammy Baiz

Post-Cruise processing and report preparation by the
Shipboard Technical Support Group,
Scripps Institution of Oceanography
La Jolla, CA 92093-0223

NOTE: This is an index of underway geophysical data edited and processed after the completion of the cruise leg and is intended primarily for informal use within the institution. This document is not to be reproduced or distributed outside Scripps without prior approval of the chief scientist or Shipboard Technical Support, Scripps Institution of Oceanography, La Jolla, California 92093-0223.

STS Cruise ID# 298

**Report and Index of Navigation
and Underway Geophysical Data**

Processed by the Shipboard Technical Support Group
Scripps Institution of Oceanography

Contents:

Index Chart - gives track of cruise leg, dates, ports, and mileage of each type of data collected.

Track Charts- annotated with dates and hour ticks

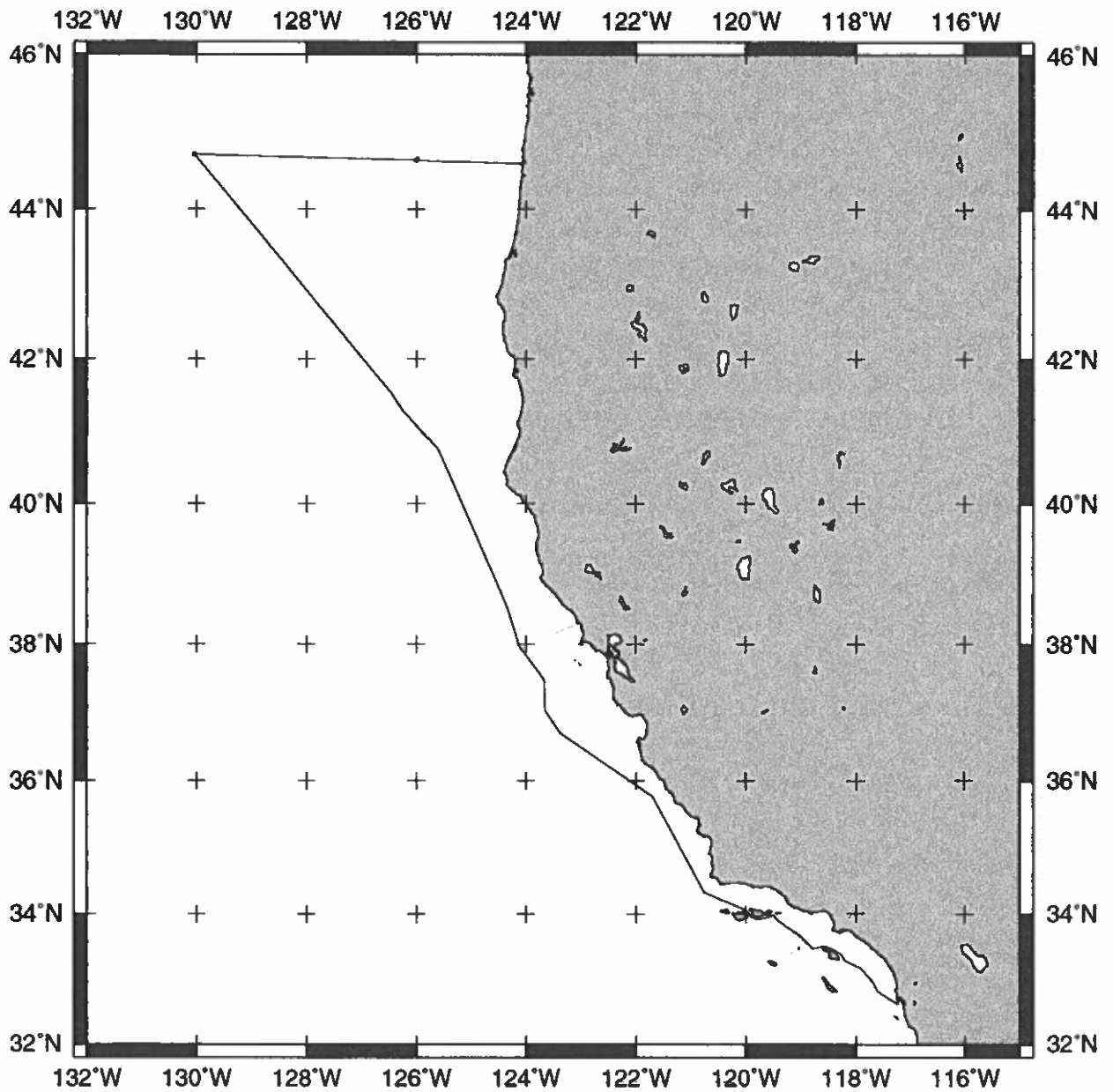
Profiles - depth, magnetic and gravity free air anomaly vs. distance. (Sections of track with seismic reflection data have a wide black line along the bottom of the profile.)

Sample Index - list of begin/end times and positions of all underway records as well as samples and measurements from other disciplines collected on the leg.

NOTE:

For information on the availability of this current digital data as well as archived digital data contact Stephen P. Miller, Geological Data Center, Scripps Institution of Oceanography, La Jolla, California 92093-0220 Phone: (858)534-1898, internet email: spmiller@ucsd.edu; or his Website: <http://SIOExplorer@ucsd.edu>

Rev 6/2001



LAPEROUSE EXPEDITION LEG 1 (LPRS01RR)

CHIEF SCIENTIST: David Chadwell, Scripps Institution

PORTS: San Diego, California - Newport, Oregon

DATES: 08 - 22 June 2002

SHIP: R/V Revelle

TOTAL MILEAGE OF UNDERWAY DATA COLLECTED

Cruise-1306 miles

Magnetics-886 miles

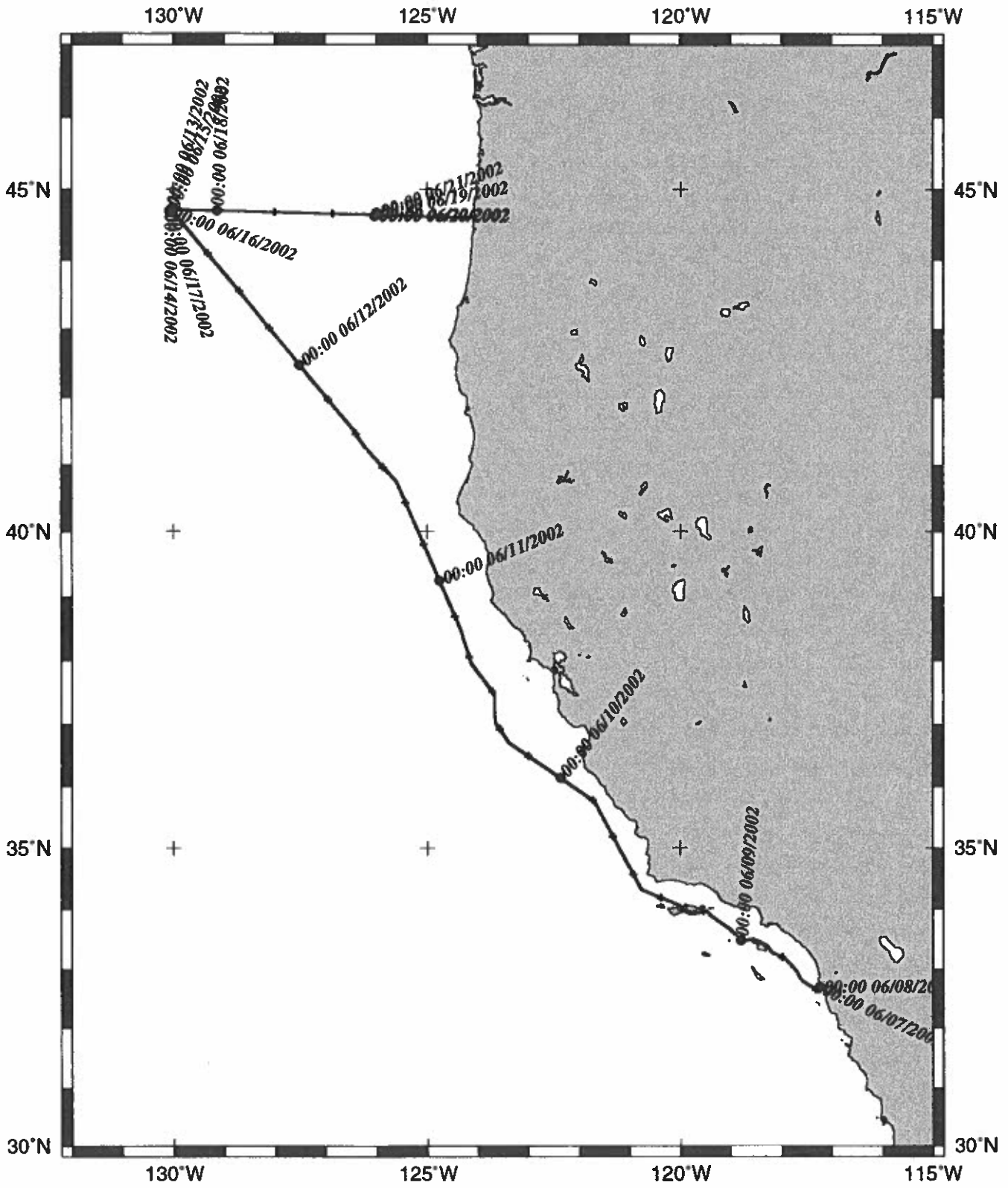
Bathymetry-1131 miles

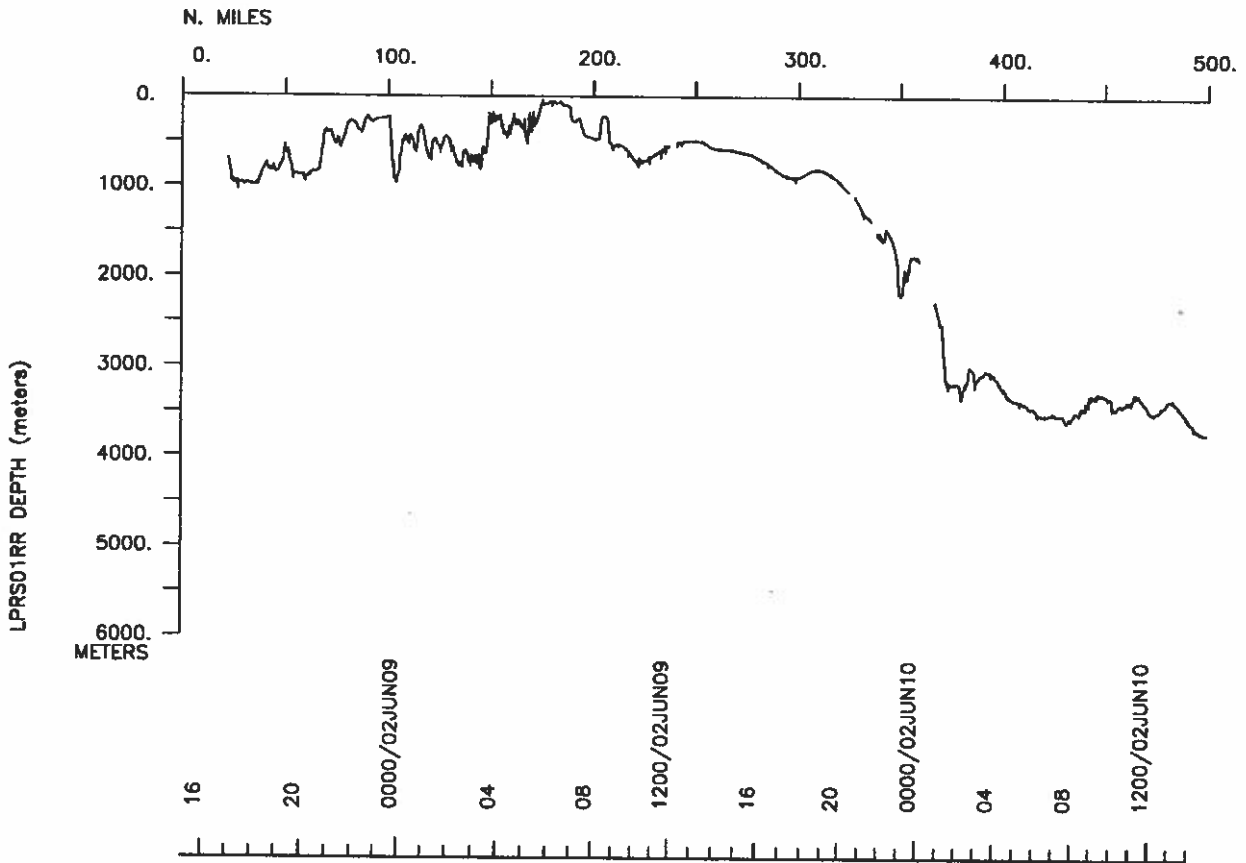
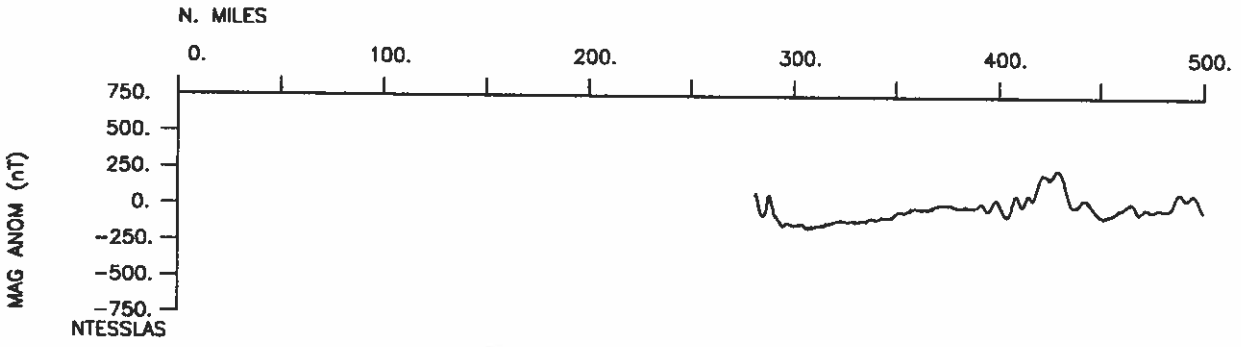
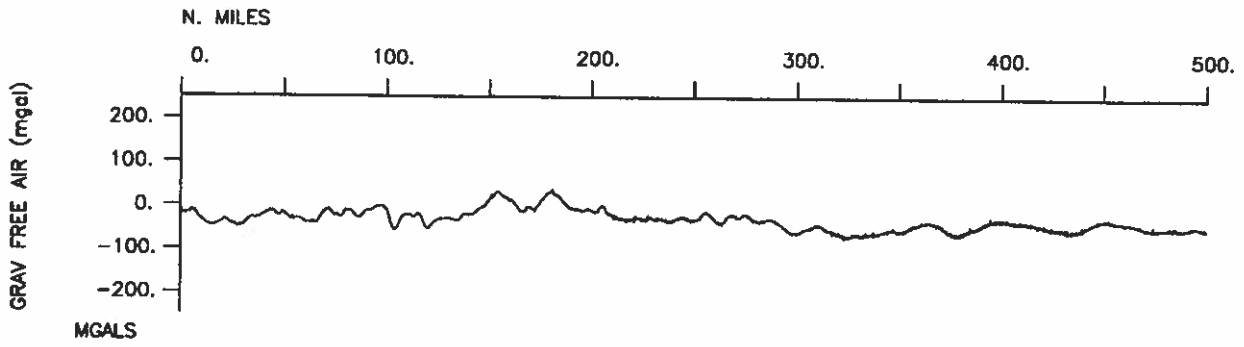
Seismic Reflection-none collected

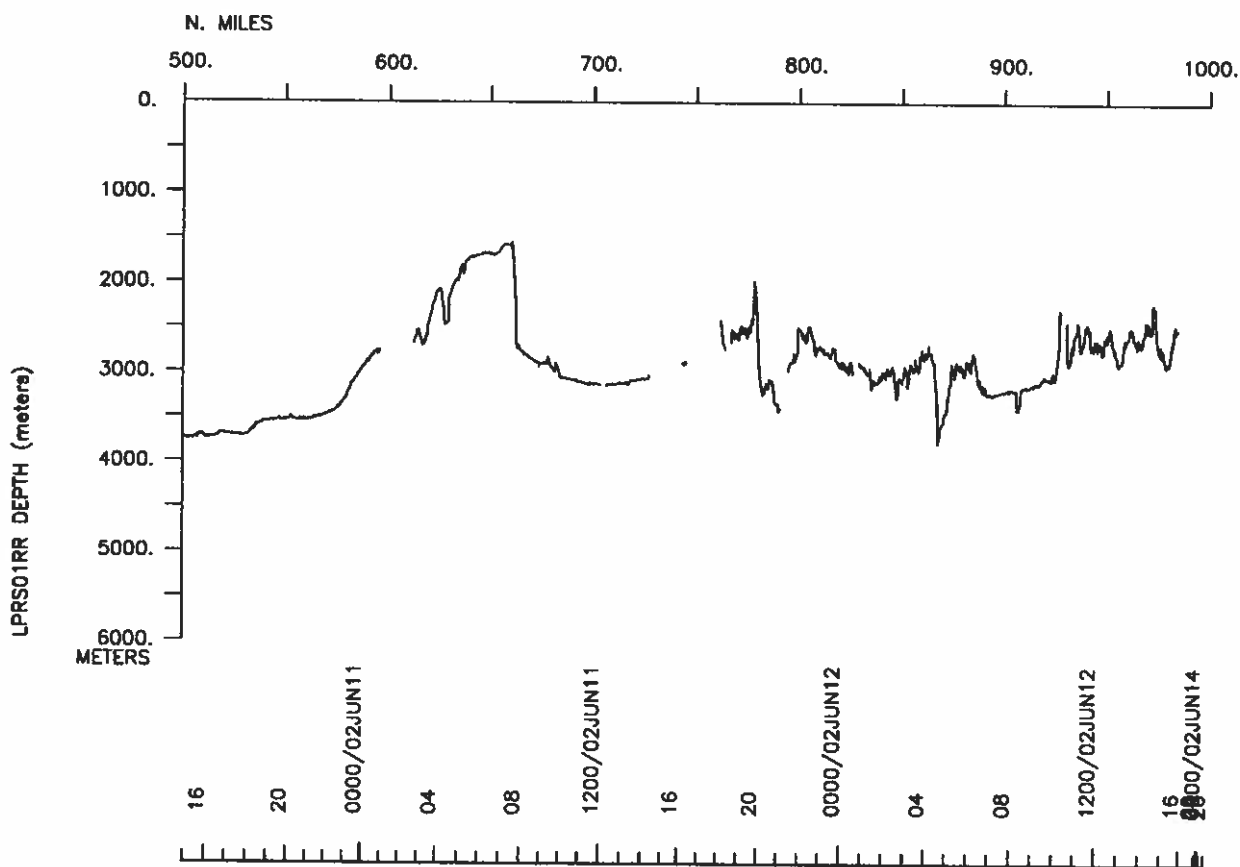
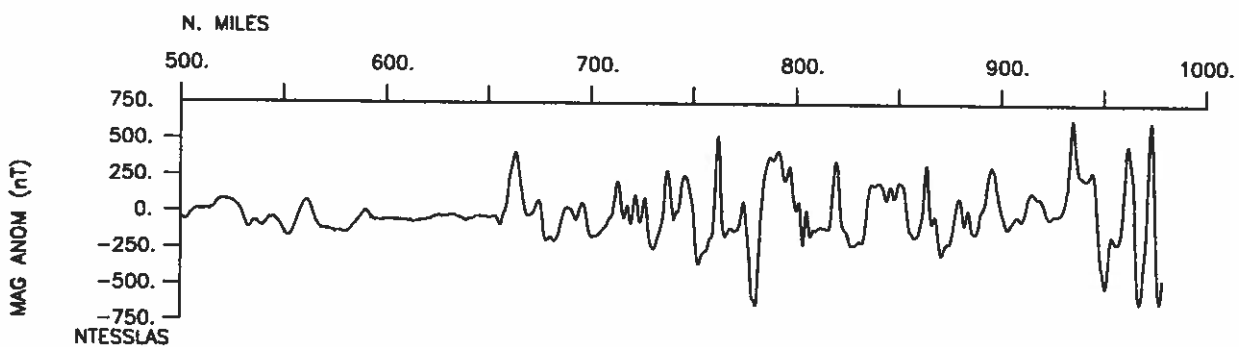
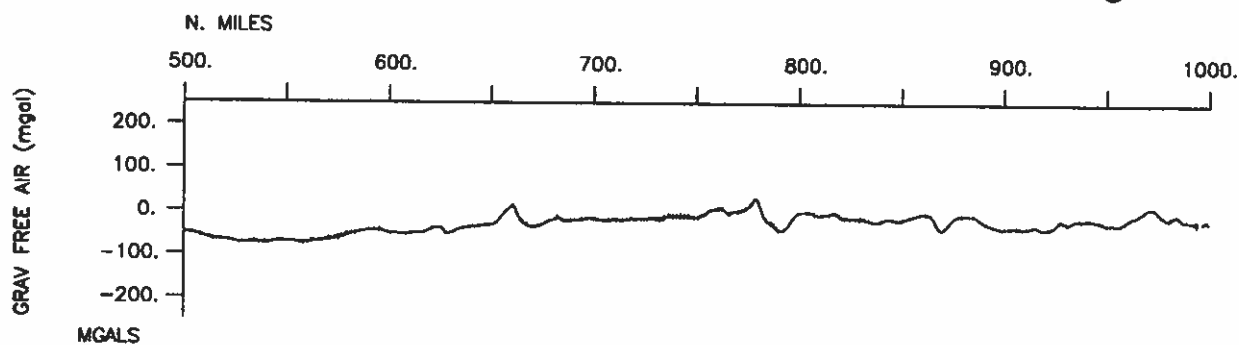
Multibeam-1131 miles

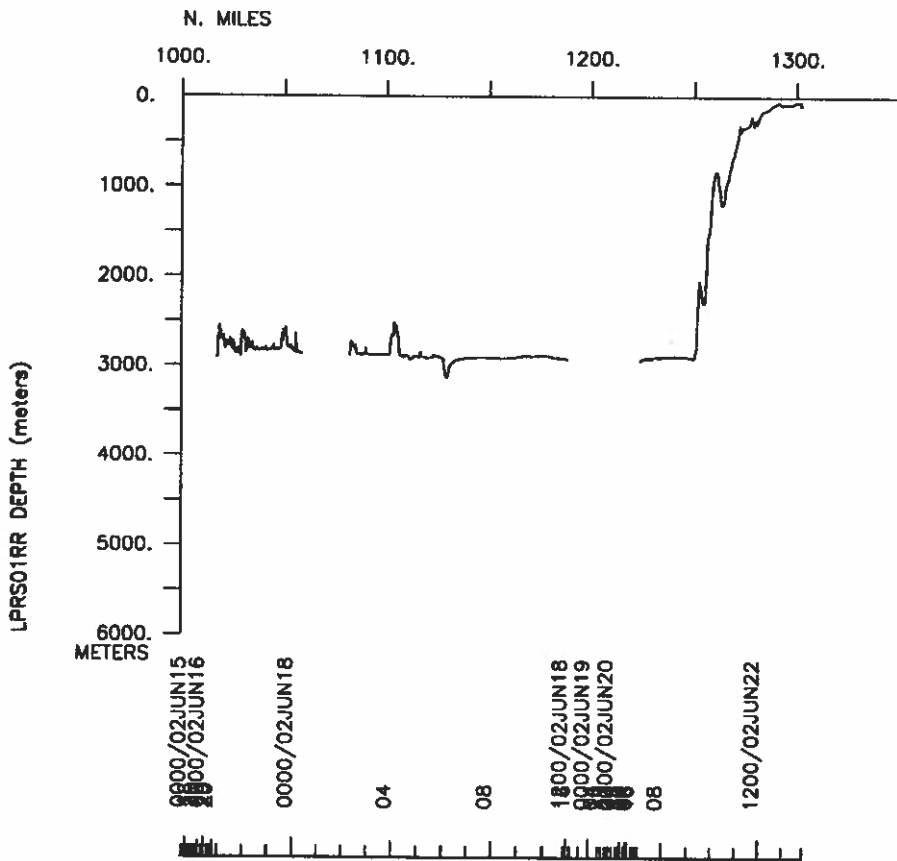
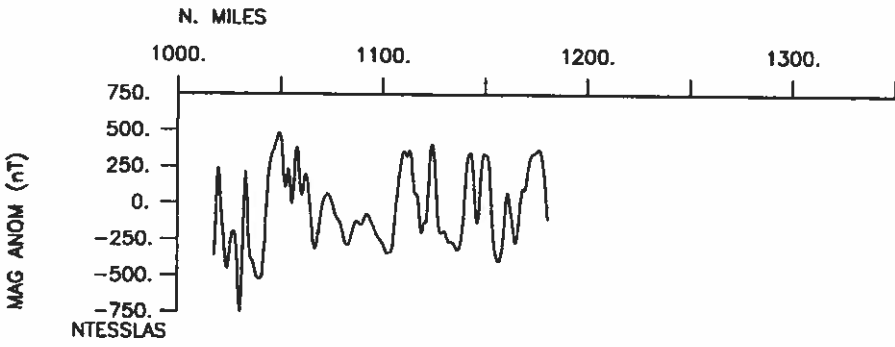
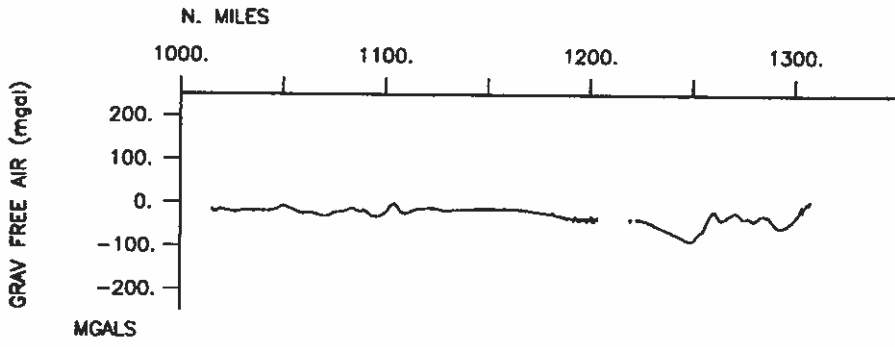
Gravity-1276 miles

LPRS01RR









S.I.O. Sample Index

La Perouse Expedition

Leg 1

(LPRS01RR)

R/V Revelle

(Issued September 2002)

PORTS:

San Diego, California (8 June 2002)
to
Newport, Oregon (22 June 2002)

Chief Scientist: David Chadwell
Scripps Institution of Oceanography

The Sample Index is a first level interdisciplinary listing of time, position, sample identification and disposition of all samples, records and measurements collected on this cruise leg. The index data are encoded at sea by the resident marine technician and processed on shore by the S.I.O. Shipboard Technical Support shortly after the completion of the cruise leg.

Positions are interpolated on the basis of sample time by comparison to a single, edited navigation file. Samples beginning at one time and position and ending at another are entered on two consecutive lines. Disposition and sample type are represented by three and four character codes to permit future computer searches on these parameters. (Listings defining these codes are available from the Shipboard Technical Support Group.)

STS Cruise ID# 298

**** Ports ***

```
1457 080602    LGPT B San Diego, California    32-40.00N 117-14.00W f LPRS01RR
1452 220602    LGPT E Newport, Oregon          44-41.00N 124-05.00W f LPRS01RR
```

**** Personnel ***

```
# *****NAME***** *****TITLE***** *****AFFILIATION***** **CRID**
#-----
PECS MPL Chadwell, D.           Chief Scientist      Scripps Institution  LPRS01RR
PESP MPL Zimmerman, R.         Scientist            Scripps Institution  LPRS01RR
PESP MPL Price, D.             Scientist            Scripps Institution  LPRS01RR
PESP MPL Phillips, K.         Scientist            Scripps Institution  LPRS01RR
PESP MPL Rimmington, D.       Scientist            Scripps Institution  LPRS01RR
PECT SCG French, Bill          Computer Tech        Scripps Institution  LPRS01RR
PERT STS Baiz, Tammy          Resident Tech        Scripps Institution  LPRS01RR
PEVL UCSD Gary, L.            Volunteer            U.of Cal.San Diego  LPRS01RR
PEVL UCSD Chau, P.            Volunteer            U.of Cal.San Diego  LPRS01RR
PEVL UCSD Langford, A.        Volunteer            U.of Cal.San Diego  LPRS01RR
PEVL UCSD Pierson, A.         Volunteer            U.of Cal.San Diego  LPRS01RR
PEVL UCSD Winanat, C.         Volunteer            U.of Cal.San Diego  LPRS01RR
```

**** NOTES ***

```
#An 'X' in the (B)egin/(E)nd column following the sample code indicates no
#sample or data recovered. A 'C' indicates continuation of data collection
#from before the beginning or after the end of a particular leg, (moored
#bottom instruments, for example.) The number appearing in the columns
#between the sample identifier and the disposition code, for many sample
#entries, is the water depth in corrected meters.
```

```
#GMT DDMMYY    SAMP B SAMPLE          DISP          p CRUISE
#TIME DATE    TZ CODE E IDENTIFIER    CODE LATITUDE LONGITUDE c LEG-SHIP
#-----
```

```
**** Underway Data Curator - Shipboard Technical Support Group ext.41899 ***
**** Digital Data Curator - Geological Data Center, S.P. Miller, ext.41898 ***
```

**** MultiBeam Data (SIMRAD) ***

```
1704 080602    0 MBSI B EM120 multibeam data GDC  32-46.37N 117-31.62W g LPRS01RR
1345 220602    0 MBSI E EM120 multibeam data GDC  44-35.83N 124-07.65W g LPRS01RR
```

**** Digital Magnetics (Earth Total Field) ***

```
1605 090602    0 MGDD B digital magnetics     GDC  35-12.34N 121-20.30W g LPRS01RR
1017 180602    0 MGDD E digital magnetics     GDC  44-38.66N 126-10.55W g LPRS01RR
```

**** Digital Gravity ***

```
1454 080602    0 GVDD B digital gravity        GDC  32-42.40N 117-14.18W g LPRS01RR
1452 220602    0 GVDD E digital gravity        GDC  44-37.50N 124-02.05W g LPRS01RR
```

#GMT	DDMMYY	SAMP	B	SAMPLE	DISP				p	CRUISE
#TIME	DATE	TZ	CODE	E IDENTIFIER	CODE	LATITUDE	LONGITUDE		c	LEG-SHIP
#	-----	--	-----	-----	-----	-----	-----	-----	-----	-----
*** Acoustic Doppler Current Profiler ***										
1455	080602	0	ADCP	B current measurements	GDC	32-42.40N	117-14.18W	g	LPRS01RR	
1450	220602	0	ADCP	E current measurements	GDC	44-37.50N	124-02.05W	g	LPRS01RR	
*** Integrated Meteorological Acquisition System ***										
1455	080602	0	IMET	B weather measurements	GDC	32-42.40N	117-14.18W	g	LPRS01RR	
1450	220602	0	IMET	E weather measurements	GDC	44-37.50N	124-02.05W	g	LPRS01RR	
*** Conductivity, Temperature, Depth ***										
1947	120602	0	TDCT	B CTD deployed	MPL	44-42.79N	130-02.53W	g	LPRS01RR	
1233	140602	0	TDCT	E CTD recovered	MPL	44-42.75N	130-02.58W	g	LPRS01RR	
0331	160602	0	TDCT	B CTD deployed	MPL	44-42.73N	130-02.58W	g	LPRS01RR	
1836	170602	0	TDCT	E CTD recovered	MPL	44-42.74N	130-02.59W	g	LPRS01RR	
0527	210602	0	TDCT	B CTD deployed	MPL	44-38.44N	126-00.39W	g	LPRS01RR	
1439	210602	0	TDCT	E CTD recovered	MPL	44-38.43N	126-00.39W	g	LPRS01RR	
1536	210602	0	TDCT	B CTD deployed	MPL	44-38.43N	126-00.39W	g	LPRS01RR	
0642	220602	0	TDCT	E CTD recovered	MPL	44-38.43N	126-00.40W	g	LPRS01RR	
*** Tide Gauges ***										
1922	120602	0	CMTG	B Tide gauge deployed	MPL	44-42.78N	130-02.52W	g	LPRS01RR	
2019	170602	0	CMTG	E Tide Gauge Recovered	MPL	44-42.73N	130-02.56W	g	LPRS01RR	
1212	180602	0	CMTG	B Tide gauge deployed	MPL	44-38.43N	126-00.40W	g	LPRS01RR	
1516	210602	0	CMTG	E Tide Gauge Recovered	MPL	44-38.42N	126-00.28W	g	LPRS01RR	
*** Deep Tow Controlled Vehicle ***										
0618	140602	0	DTWS	B CV Deployed	MPL	44-42.75N	130-02.58W	g	LPRS01RR	
0321	160602	0	DTWS	E CV Recovered	MPL	44-42.73N	130-02.58W	g	LPRS01RR	
1328	180602	0	DTWS	B CV Deployed	MPL	44-39.55N	125-58.97W	g	LPRS01RR	
1750	180602	0	DTWS	E CV Recovered	MPL	44-39.57N	125-58.97W	g	LPRS01RR	
1823	180602	0	DTWS	B CV Deployed	MPL	44-39.57N	125-58.98W	g	LPRS01RR	
2156	180602	0	DTWS	E CV Recovered	MPL	44-39.58N	125-58.97W	g	LPRS01RR	
0118	190602	0	DTWS	B CV Deployed	MPL	44-38.43N	126-00.40W	g	LPRS01RR	
2328	200602	0	DTWS	E CV Recovered	MPL	44-39.59N	125-58.95W	g	LPRS01RR	
0041	210602	0	DTWS	B CV Deployed	MPL	44-39.54N	125-58.93W	g	LPRS01RR	
0408	210602	0	DTWS	E CV Recovered	MPL	44-39.47N	125-59.05W	g	LPRS01RR	
*** Expendable Bathythermographs ***										
1748	080602	0	BTXP	MK12 # 1 Fast_Deep	GDC	32-51.99N	117-38.33W	g	LPRS01RR	
1536	090602	0	BTXP	MK12 # 2 Fast_Deep	GDC	35-07.39N	121-17.00W	g	LPRS01RR	
2115	170602	0	BTXP	MK12 # 3 Fast_Deep	GDC	44-42.82N	129-56.95W	g	LPRS01RR	
#				End Sample Index					LPRS01RR	