

SAN DIEGO & ARIZONA RAILWAY

THE CARRISO GORGE ROUTE

THE LAST TRANSCONTINENTAL
LINK

CHICAGO
NEW ORLEANS
KANSAS CITY
EL PASO
SAN DIEGO

THROUGH MEXICO AND THE GREAT
IMPERIAL VALLEY



ENTRANCE BALBOA PARK, SAN DIEGO, CALIFORNIA



California's Newest Scenic Marvel, the Wonderful Carriso Gorge. For Eleven Miles the San Diego and Arizona Railway Traverses this Giant Abyss and every turn of the Train Affords Thrilling Views.

SAN DIEGO AND ARIZONA RAILWAY

MAIN LINE

From San Diego EASTBOUND		Miles	Corrected to June 18, 1921	Elev.	To San Diego WESTBOUND	
No. 52 Mixed Daily	No. 4 Daily				No. 3 Daily	No. 51 Mixed Daily
10 30PM	10 00AM		Lv San Diego.....S. D. & A. Ar	10	2 45PM	7 00AM
s10 53	s10 16	5.0	" National City....." Lv	s 2 27	s 6 31	
s11 02	s10 22	7.4	" Chula Vista....." Lv	s 2 21	s 6 23	
f11 11	f10 28	11.1	" Palm City....." Lv	f 2 15	f 6 13	
s11 20	s10 35	15.5	Ar Tia Juana (U. S.).....T. & T. Ar	s 2 07	s 6 00	
s11 35	s10 40	16.2	Ar Tijuana (Mexico)....." Lv	s 2 02	s 5 49	
f11 54	f10 54	24.0	" Garcia....." Lv	f 1 51	f 5 29	
f12 06AM		27.5	" Matanuca....." Lv		f 5 20	
s12 36	s11 20	36.6	" Redondo....." Lv	f 1 32	f 4 55	
f 1 16		48.4	" La Puerta....." Lv	1590	f 4 21	
s 1 33	s12 00	52.8	" Tecate....." Lv	1690	s 1 02	s 4 11
f 1 55	f12 17	59.6	" Lindero....." Lv	2120	f12 48	f 3 52
s 2 21	s12 34	65.8	" Campo (U. S.).....S. D. & A. Ar	2590	f12 34	s 3 36
s 3 25	f 1 20	84.5	" Hipass....." Lv	3660	f11 58AM	s 2 40
s 3 55	s 1 40	92.9	" Jacumba Hot Springs....." Lv	2830	s11 28	s 1 50
f 4 22	f 2 04	100.7	" Carriso Gorge....." Lv	2380	f10 59	f 1 05
f 4 53	f 2 34	109.7	" Dos Cabezas....." Lv	1670	f10 28	
s 5 20		117.7	" Sugar Leaf....." Lv	790		f11 30PM
s 5 37	s 3 01	122.5	" Coyote Wells....." Lv	290	s 9 45	s11 10
f 6 13	f 3 20	134.4	" Dixieland....." Lv	-10	s 9 23	f10 40
s 6 29	s 3 29	139.8	" Seeley....." Lv	-44	s 9 15	s10 26
s 6 50	s 3 50	148.1	Ar El Centro....." Lv	-49	s 9 00	10 00
f 7 05	f 3 50	148.1	Lv El Centro.....Sou. Pac. Ar	s 9 00	s 9 45	
f 7 30	f 4 15	157.2	Ar Calexico (U. S.)....." Lv	-2	s 8 35	f 9 15
f 9 30	f 4 25	157.2	Lv Calexico (U. S.)....." Ar	-2	s 8 13	s15 30
s 9 40	f 4 30	157.5	" Mexicali (Mexico)....." Lv	s 8 08	s 5 20	
		208.9	" Cantu (U. S.)....." Lv			
		211.9	" Araz Junction....." Lv			
s 1 00PM	f 6 28	218.5	Ar Yuma (P. T.)....." Lv	137	6 10	2 00
4 48	8 07PM	218.5	Lv Yuma (M. T.).....Sou. Pac. Ar		6 40AM	12 14
9 30PM	12 55AM	384.0	" Maricopa....." Lv		1 55	6 45AM
	7 40		Lv Maricopa.....A. E. Ar	12 10	5 40	
	9 00	419.0	Ar Phoenix....." Lv	11 00PM	4 40AM	
* Tues.	12 55		Lv Maricopa.....Sou. Pac. Ar		1 55	Wed.
Tues.	3 35	469.7	Lv Tucson....." Lv	2390	11 35	Wed.
		593.0	Ar Douglas.....E. P. & S. W. Ar		7 35	Wed.
Tues.	12 35PM	781.6	" El Paso (M. T.).....Sou. Pac. Ar		1 25	Wed.
Tues.	12 50	781.6	Lv El Paso (M. T.).....E. P. & S. W. Ar	3713	1 05	Wed.
Wed.	5 30	1733.	Ar Kansas City.....C. R. I. & P. Lv	766	9 25AM	Tues.
Wed.	9 00PM		Lv Kansas City.....C. R. I. & P. Ar	766	7 50	Tues.
Thur.	7 40AM	2029.	Ar St. Louis....." Lv	600	9 03PM	Mon.
Wed.	6 30PM		Lv Kansas City.....C. R. I. & P. Ar	766	8 30AM	Tues.
Thur.	9 15AM	2249.	Ar Chicago....." Lv	603	6 30PM	* Mon.
No. 102	No. 110		Lv Yuma (M. T.).....Sou. Pac. Ar	137	No. 109	No. 101
4 48PM	12 10AM	218.5	" Maricopa....." Lv	1172	12 14PM	2 35PM
9 30	6 05	383.6	" Tucson....." Lv	2390	6 45AM	9 38AM
11 59PM	10 05	469.7	Ar El Paso (M. T.)....." Lv	3713	3 33	7 25
8 30AM	10 00PM	781.6	Lv El Paso (M. T.)....." Ar	3713	4 30PM	10 00PM
9 50	11 30	781.6	Lv El Paso (C. T.)....." Ar	3713	5 00	10 45
3 20	11 30	1401.6	" San Antonio....." Lv	661	7 30	5 00AM
9 30	7 20	1612.6	Lv Houston....." Lv	64	11 45AM	10 45PM
8 00PM	6 50PM	1975.6	Ar New Orleans....." Lv	7	11 30PM	12 10

Black type denotes p. m.; light type a. m.
f—Indicates trains stop on flag to receive and discharge passengers.
s—Indicates regular stop. Where no time is shown train does not stop.
*—Example by days. Service Daily. †—Stops for meals.

NOS. 3 and 4

Pullman between San Diego and Chicago daily.
(S-D-C)

Through Coaches and Baggage Car between San Diego and Yuma.

Observation and Dining service operated on trains 3 and 4 between San Diego and Yuma, provide high-class service between San Diego and Chicago.

Westbound between El Paso and Tucson train is operated via E. P. & S. W.; Eastbound via Southern Pacific.

NOS. 51 and 52—IMPERIAL VALLEY LOCAL

Pullman Sleeper, Coach and Baggage Car, Between San Diego, El Centro, Calexico and Yuma.

LAKESIDE LINE

EASTWARD		AM	AM	PM	PM	PM	PM	PM	PM	PM
San Diego (foot of B St.).....	7 20	10 30	12 25	2 35	5 15	5 45	9 20	11 00		
San Diego (1st and Bdwy.).....	7 25	10 35	12 30	2 40	5 20	5 50	9 25	11 05		
San Diego (13th and N Sts.).....	7 34	10 44	12 39	2 49	5 29	5 59	9 34	11 14		
Encanto.....	7 52	11 02	12 57	3 07	5 47	6 17	9 52	11 32		
Lemon Grove.....	8 07	11 12	1 07	3 17	5 57	6 27	10 02	11 42		
La Mesa.....	8 10	11 20	1 15	3 25	6 05	6 35	10 10	11 50		
Grossmont.....	8 18					6 43				
El Cajon.....	8 22					6 47				
Santee.....	8 31					6 56				
Riverview.....	8 35					7 01				
Lakeside.....	8 40					7 05				
WESTWARD		AM	AM	PM	PM	PM	PM	PM	PM	PM
Lakeside.....	6 45	8 55								
Riverview.....										
Santee.....	6 52	9 05								
El Cajon.....	7 01	9 14								
Grossmont.....	7 08	9 21								
La Mesa.....	7 14	9 30	11 30	1 30	4 30	6 18	10 15	11 55		
Lemon Grove.....	7 21	9 37	11 37	1 37	4 37	6 27	10 22	12 02		
Encanto.....	7 28	9 45	11 45	1 45	4 44	6 34	10 30	12 09		
San Diego (13th and N Sts.).....	7 43	10 03	12 03	2 03	5 00	6 48	10 48	12 24		
San Diego (1st and Bdwy.).....	7 50	10 10	12 10	2 10	5 07	6 55	10 55	12 31		
San Diego (foot of B St.).....	7 55	10 15	12 15	2 15	5 10	7 00	11 00	12 35		

†Daily.

†Daily except Sunday.

cWednesday and Saturday only.

A Daily except Wednesday and Saturday.

For information regarding freight rates, passenger fares, tickets, baggage and Pullman reservations, call upon or address the following representatives:

SAN DIEGO AND ARIZONA RAILWAY

324 Broadway or 606 Spreckels Building, San Diego

D. W. PONTIUS..... General Manager
F. B. DORSEY..... Assistant Traffic Manager
A. D. HAGAMAN..... District Freight and Passenger Agent

SOUTHERN PACIFIC LINES

SAN FRANCISCO, CAL., Southern Pacific Bldg., 65 Market St.
Chas. S. Fee, Passenger Traffic Manager
LOS ANGELES, CAL., Pacific Electric Bldg., 6th and Main Sts.
F. E. Batturs, Asst. Passenger Traffic Manager
F. McGinnis, General Passenger Agent
PORTLAND, ORE., John M. Scott, General Passenger Agent
HOUSTON, TEX., Jos. Hellen, General Passenger Agent
NEW ORLEANS, LA., J. T. Monroe, General Passenger Agent
TUCSON, ARIZ., E. J. Fenchurch, Asst. General Freight and Passenger Agent

General and District Agents

ATLANTA, GA., Healey Bldg., Walton and Forsyth Sts..... D. Asbury, General Agent
BALTIMORE, MD., Hartman Bldg., Light and Redwood Sts..... W. B. Johnson, General Agent
BIRMINGHAM, ALA., Woolworth Bldg., 19th St. and Third Ave..... S. J. Brown, General Agent
BOSTON, MASS., 294 Washington Street..... J. H. Glynn, General Agent
CHICAGO, ILL., Southern Pacific Bldg., 35-37 W. Jackson Blvd..... C. L. McFaul, General Agent
CINCINNATI, O., Second National Bank Bldg., 9th and Main Sts..... H. F. Kern, General Agent
DENVER, COLO., 315-316 Denham Bldg., 18th and California Sts..... F. W. Sedgwick, General Agent
DETROIT, MICH., Majestic Bldg., Woodward and Michigan Aves..... W. W. Hale, General Agent
EL CENTRO, CAL.,..... C. W. Runge, District Freight and Passenger Agent
EL PASO, TEX., 206 N. Oregon St..... W. C. McCormick, District Freight and Passenger Agent
KANSAS CITY, MO., Railway Exchange Bldg., 7th and Walnut Sts..... L. B. Banks, General Agent
MEMPHIS, TENN., Exchange Bldg., 130 Madison Ave..... L. C. Bouchard, General Agent
MEXICO CITY..... George F. Jackson, General Agent
NEW YORK, N. Y.,..... A. J. Poston, General Agent, Passenger Department
165 Broadway..... S. C. Chiles, General Agent, Freight Department
PHILADELPHIA, PA., 1602 Chestnut St..... F. T. Brooks, General Agent
PHOENIX, ARIZ., Adams and Central Ave..... P. Bancroft, Dist. Freight and Passenger Agent
PITTSBURGH, PA., Chamber of Commerce Bldg., 7th Ave. and Smithfield St.....
G. G. Herring, General Agent
SAN ANTONIO, TEX., 315 W. Marys St..... H. A. Loeffler, District Freight and Passenger Agent
SAN DIEGO, CAL.,..... A. D. Hagaman, Dist. Freight and Passenger Agent
ST. LOUIS, MO., Southern Pacific Bldg., 217-314 No. Sixth St..... C. T. Collett, General Agent
MEXICALI, MEXICO, Inter-California Railway (Southern Pacific).....
E. G. Burdick, General Manager

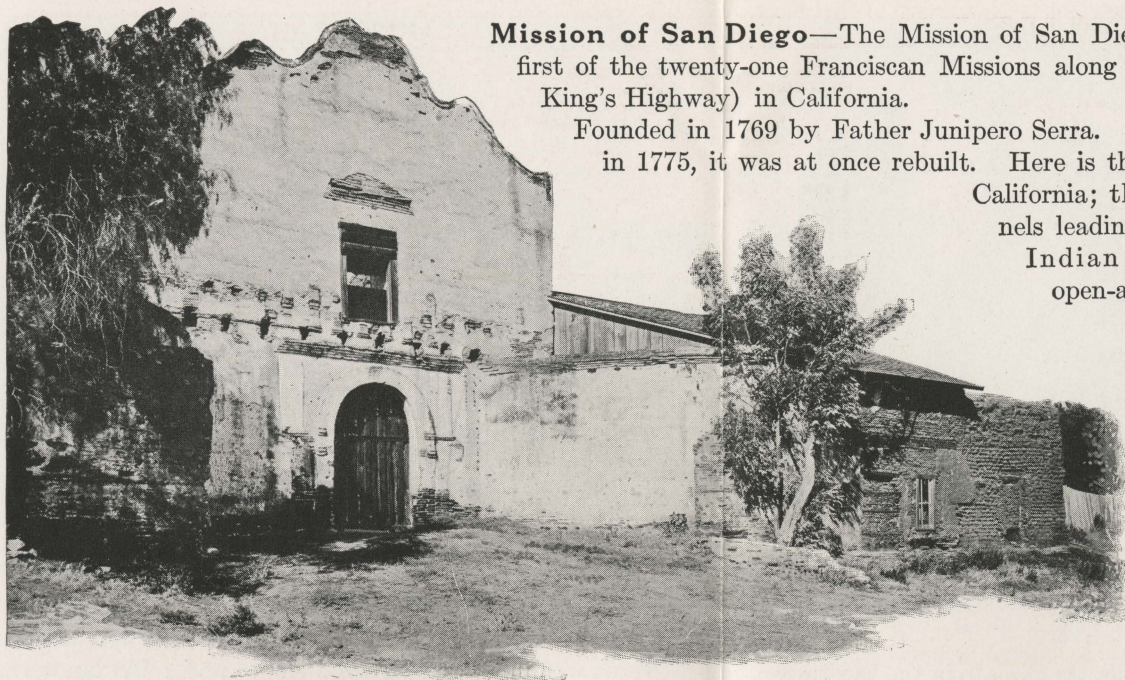
EUROPEAN AGENCIES

LIVERPOOL, ENGLAND, 21 Water St..... Thomas Cooper, General Agent
LONDON, ENGLAND, 49 Leadenhall St..... R. G. Bonsor, Agent
PARIS, FRANCE, 3 Rue Tronchet..... H. Desmidt, General Agent
HAMBURG, GERMANY, 25-27 Ferdinand Strasse..... R. Falek, General Agent
GENOA, ITALY, 10 Piazza San Siro..... Brizzolesi, Kimsley & Millbourn, Agent



THE WAY TO SEE CALIFORNIA IS TO SEE SAN DIEGO FIRST

SAN DIEGO AND ARIZONA RAILWAY



Mission of San Diego—The Mission of San Diego de Alcalá was the first of the twenty-one Franciscan Missions along El Camino Real (The King's Highway) in California.

Founded in 1769 by Father Junipero Serra. Destroyed by Indians in 1775, it was at once rebuilt. Here is the first olive grove in

California; the underground tunnels leading to the old well; the Indian school building and open-air shrine. It was from

here that Serra in 1770 wrote to his King, saying, "This California is a goodly land. The wild vines are loaded with grape and the roses here are like those of Castile."

Where California Began. The Mission of San Diego de Alcalá, the First Mission Built in California.



THE WAY TO SEE CALIFORNIA IS TO SEE SAN DIEGO FIRST.

SAN DIEGO AND ARIZONA RAILWAY



In the Residence District, San Diego

San Diego—Eighty thousand people, has doubled its population within the last ten years and will double it again within the next five.

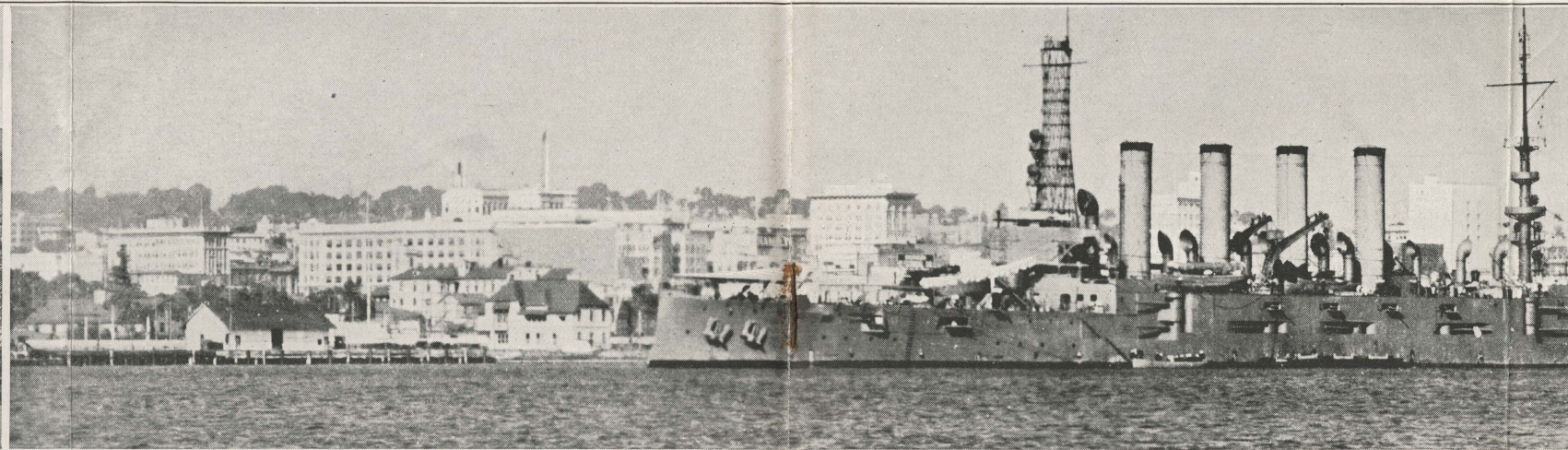
Of all American cities its climate is the most even and desirable. Winters are mild and summers are cool. The highest and lowest temperature on an average winter day are 62° and 46°. In summer there is a mean of 72° in the day time and 64° in the night time. January mean temperature is 54°, which is only 14° cooler than July. There

is an almost total absence of cold waves and winter storms and there are few rainy days.

It is a city of charming homes, set in semi-tropical verdure, built upon terraced slopes and table lands that face the sunset sea, with a background of granite-walled mountains.

The hotels, first-class and of modern pretensions, are excellent and in variety. Apartment houses care for thousands of winter visitors. Coronado Tent City, at

SAN DIEGO AND ARIZONA RAILWAY



San Diego Harbor, Home of the Pacific Fleet

Coronado Beach, cares for thousands more in the summer; there are daily band concerts.

Commercially, San Diego is rapidly becoming one of the great manufacturing and distributing seaports of the Pacific.

At this time, in added water supply, good roads and new docks, \$5,750,000 is being expended and private enterprise is spending double that amount.

It is now the nearest seaport city in California by rail



The Great Outdoor Organ, Balboa Park

to the East. The \$18,000,000 San Diego and Arizona Railroad has made it the terminus of the great transcontinental short line; fewer miles between the Atlantic and the Pacific, over the route of the least resistance and the ways of the Golden State Limited and the Sunset Limited.

North Island—Connecting link between the sea, the land and the air; the two great western bases of aviation, army and navy; \$3,000,000 recently spent on



Imperial Valley Cotton Ready for Shipment



Alfalfa and Dairy Scene, Imperial Valley



An Imperial Valley Irrigation Canal



Date-Growing in the Imperial Valley

THE WAY TO SEE CALIFORNIA IS TO SEE SAN DIEGO FIRST

THE WAY TO SEE CALIFORNIA IS TO SEE SAN DIEGO FIRST

SAN DIEGO AND ARIZONA RAILWAY

permanent improvements and work still under way; great dirigibles and hundreds of planes.

Only a few minutes ride from the business center of the City of San Diego and open to visitors.

Two hundred and sixteen aeroplanes have been in flight over the City of San Diego at one time; every day they are "up in the air."

San Diego Harbor—The land-locked home of 103 battleships and destroyers, the great Pacific fleet of the United States.

The greatest haven of our navy; \$27,000,000 now being spent by the Government on additions to marine facilities.

Nearest American harbor on the Pacific to the Panama Canal; admits the vessels of greatest draught; free from storms; room for all the commerce of the Pacific; miles of available water front.

Balboa Park—1400 acres of trees, lawns and flowers in the heart of the city.

Here are the permanent palaces which formed a part of the Panama-California International Exposition held in 1915-16.

An immense pipe organ in a concrete amphitheater (a gift to the city by J. D. and A. B. Spreckels) is in this park; it is the finest outdoor organ ever built. Free organ recitals are given every day in the year, excepting Mondays, for the entertainment of visitors.

Imperial Valley—Trimmed with the jewel-colored mountains of the desert; set below sea level at the delta of the greatest of western rivers; watered with the rains and snows of the Rocky Mountains running swiftly through the Grand Canyon of the Colorado to the miracle valley of the desert, a great semi-tropic garden; wide fields of cotton, mile after mile; cantaloupes covering thousand of acres; alfalfa

knee deep in February, waist high in June, as far as the eye may see; date palms, lemons, grapefruit; cities shiningly new, strung along the railroad—all this a transformation from the unwatered, uninhabited, iridescent "bottom of the bowl" of the Colorado desert in twenty years, to a home place of 60,-

000 people, having an annual soil production measured at approximately \$65,000,000.

Carriso Gorge—Eleven miles long and takes its name from a grass in its depths which is used by Indians in basket-work.

Across its precipices, its gulfs and crags, and its mountain pinnacles, are spread gorgeous blanket-patterns of color, measured in miles and woven from fluid rocks when the world was made. The reds and oranges of the sunset, splashed upon the walls of the chasms, are broken by lozenges of Navajo black, as big as a house, or edged with a border of white crystal, ten or twenty feet wide and half a mile long. The knots in this mighty tapestry are tied with outcroppings of marble; its foundation is of granite and hard rock, amethyst in the dawn, gray-black or burnt-umber under the brilliant noon-day sky, and toning to purples and violets in the haze of the distant peaks.

To build a railroad along the ragged canyons of Carriso Gorge, an enterprise long considered impossible, finally was accomplished by blasting from solid rock, a broad and secure avenue, on an easy gradient, for the rails of the San Diego and Arizona Railway, "The Carriso Gorge Route."

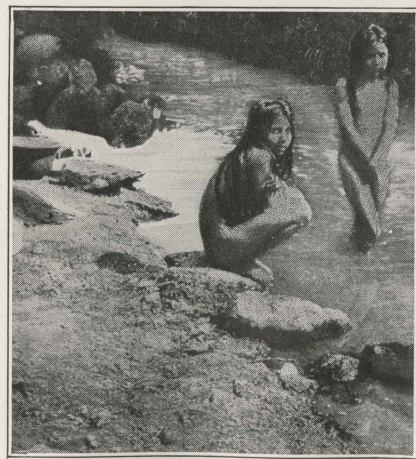
Mexico—The San Diego and Arizona, operated in connection with the Southern Pacific, passes across the border four times between San Diego and Yuma, through that peaceful portion of Mexico—Lower California. This delightful trip through scenic Mexican territory is a novel experience not to be had on any other trans-continental journey.

Trains stop at Tijuana, Tecate and Mexicali, Mexico, and at Calexico and Cantu, California, where passengers have opportunity to view these interesting border towns and acquaint themselves with the customs of the people.

Passports are not required for passing through Mexico, either over the San Diego and Arizona or the Southern Pacific. Arrangements have been made with the United States and Mexican Customs authorities so that passengers are not inconvenienced in any manner whatever when crossing the border.



Spanish Dancers, Tijuana, Mexico



A Mexican Bathing Pool

THE WAY TO SEE CALIFORNIA IS TO SEE SAN DIEGO FIRST

SAN DIEGO AND ARIZONA RAILWAY

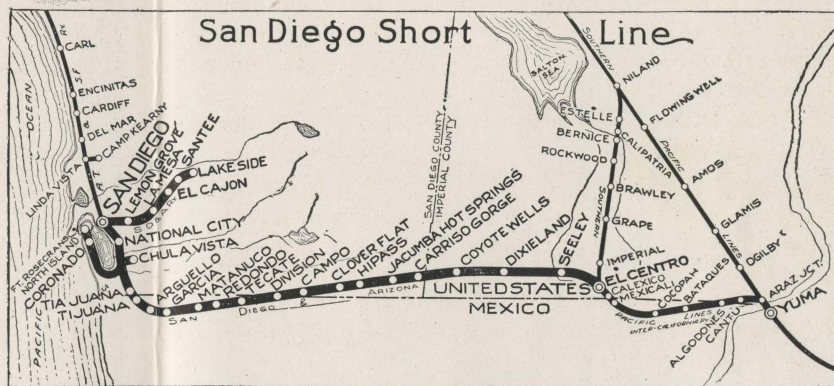


Hotel del Coronado, Coronado Beach—On San Diego Bay, is one of America's most famous all-year resort hotels. The brilliancy and frequency of indoor entertainment events and social functions, summer and winter, is on a par with elaborate and varied opportunities offered guests in out-of-door amusements and attractions.

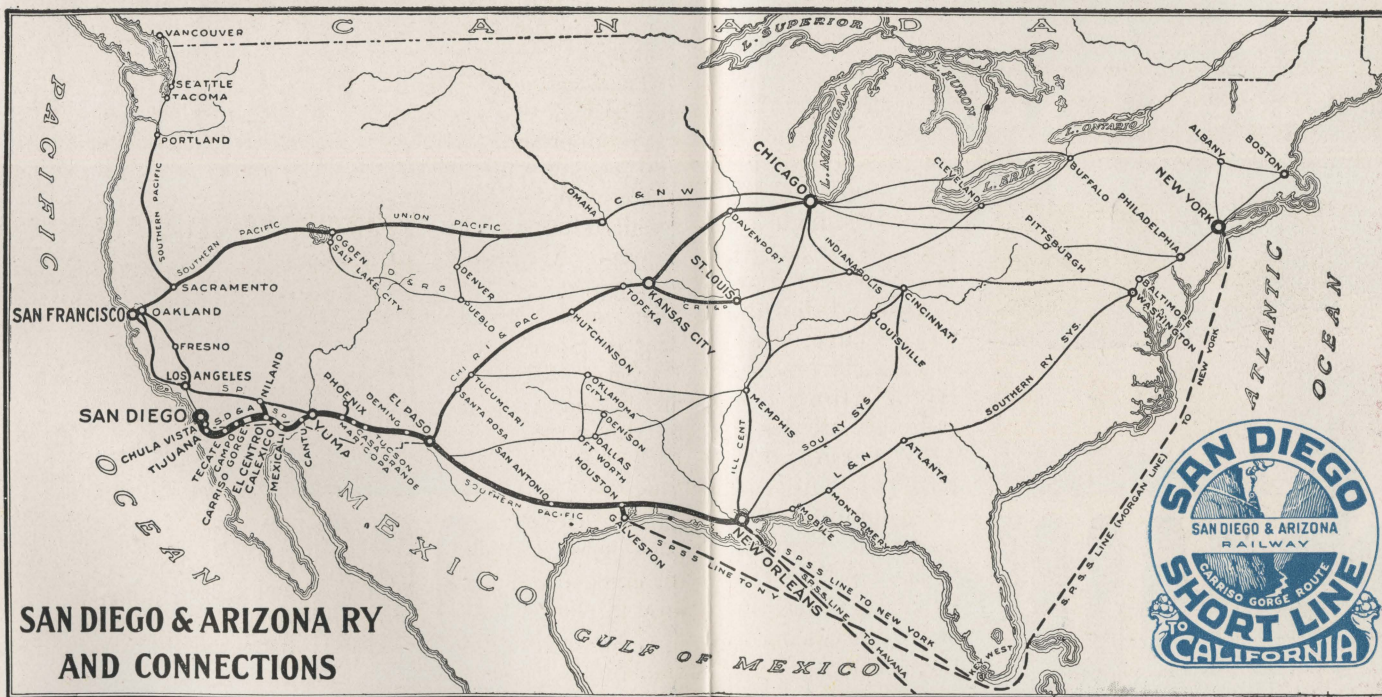
Polo reigns supreme from January to April, and supplanting this sport in summer and fall are the Trap Shooting Tournaments, motoring, golf, tennis, bay and surf bathing, boating, fishing and flying, enjoyed all year.



Govt. Departmental Headquarters, Mexicali, Mex.



Map of San Diego and Arizona Railway.



**SAN DIEGO & ARIZONA RY
AND CONNECTIONS**

THE WAY TO SEE CALIFORNIA IS TO SEE SANDIEGO FIRST