

VIEWS OF THE TWO GREAT  
PANAMA  
EXPOSITIONS

SAN FRANCISCO • • • SAN DIEGO

Thos. W. Jackson Publishing Co., Chicago.



29D  
116

35-

Feb. 20, 1915—Panama-Pacific International Exposition, San Francisco—Dec. 4, 1915



Great South Gardens, Horticultural Hall, Fountain of Energy, Tower of Jewels and Facade of Exposition Palaces. Photo Supplied by Underwood & Underwood, N. Y.

Sitting like a gem on the golden shores of the Pacific, the Panama-Pacific International Exposition, commemorating the world's greatest commercial achievement, the completion of the Panama Canal.

No former exposition has even approached it in architectural lines and beautiful colorings of its buildings. It is a marvel of wonder; it is a dream city by day, a fairy land by night. It adequately does honor to the great achievement which it celebrates.

The Exposition is not a local or a California affair. Every state and all the people are alike interested, and it is a duty that every American feel a responsibility in its success.

The Exposition will not only entertain, but will also enlighten the many, many millions who are fortunate enough to attend.

The Exposition has been completed at an expenditure of more than fifty million dollars. The doors were thrown open to the public on schedule time, February 20th. The big show will continue until December 4th, with the aid of California's ideal climate, making it possible to keep open house for nine and one-half months.

The Exposition grounds comprise an area of six hundred and thirty-five acres, covering a section one-half mile wide by two miles long, skirting the shores of the beautiful San Francisco Bay, just inside of the Golden Gate.





President Moore delivering his address at the formal opening of the Panama-Pacific International Exposition, showing some of the great crowd, of which there was an attendance of two hundred and fifty thousand, which is the largest number to participate in any like event.



On the opening day, showing the great crowd massed in front of the grandstand facing the Tower of Jewels.





Court of the Universe, showing the sunken gardens in the center, also fountains of the rising and setting sun, and the triumphal arch of the Nations of the East may be seen.

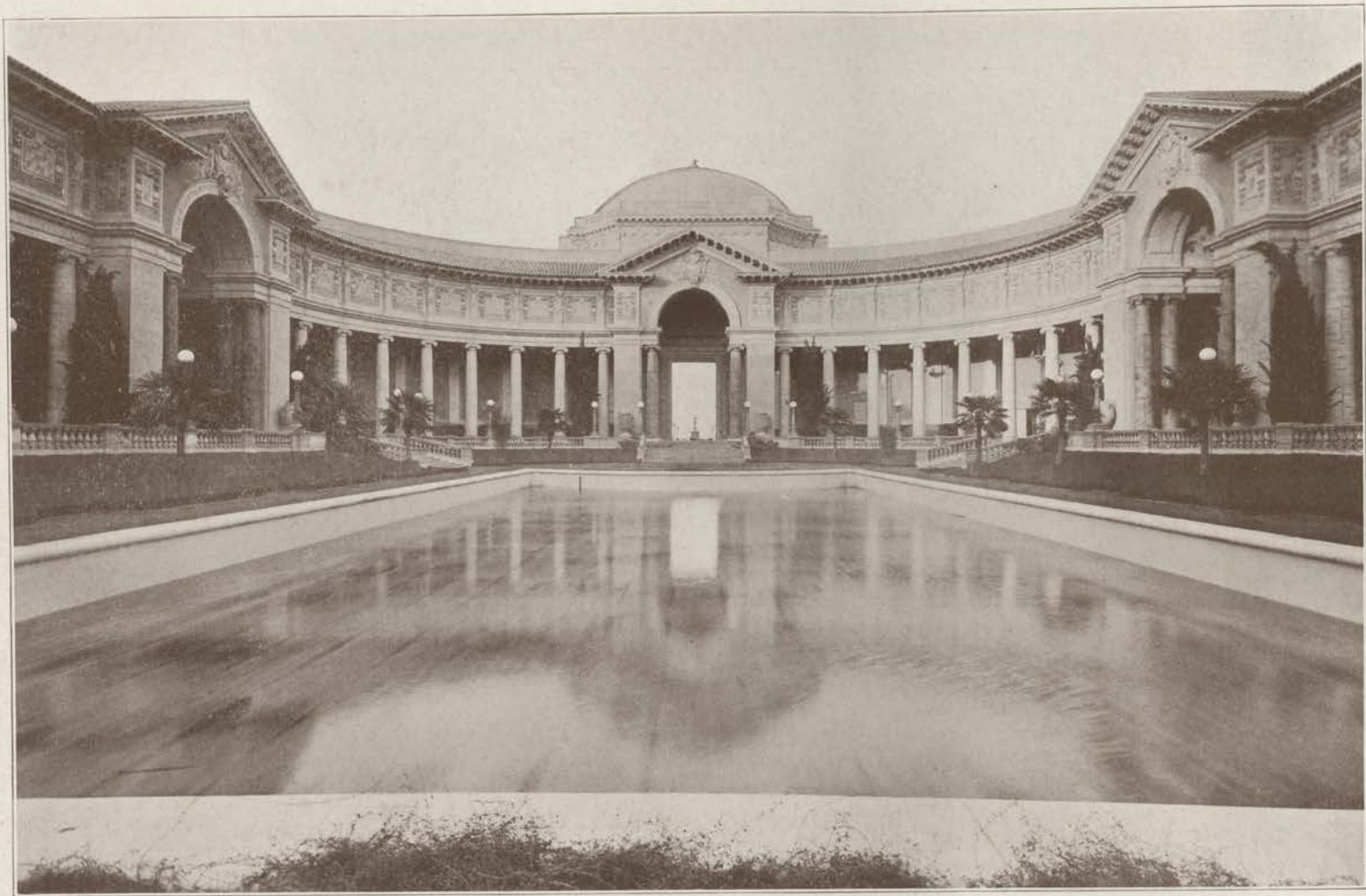
Photo Supplied by Underwood & Underwood, N. Y.



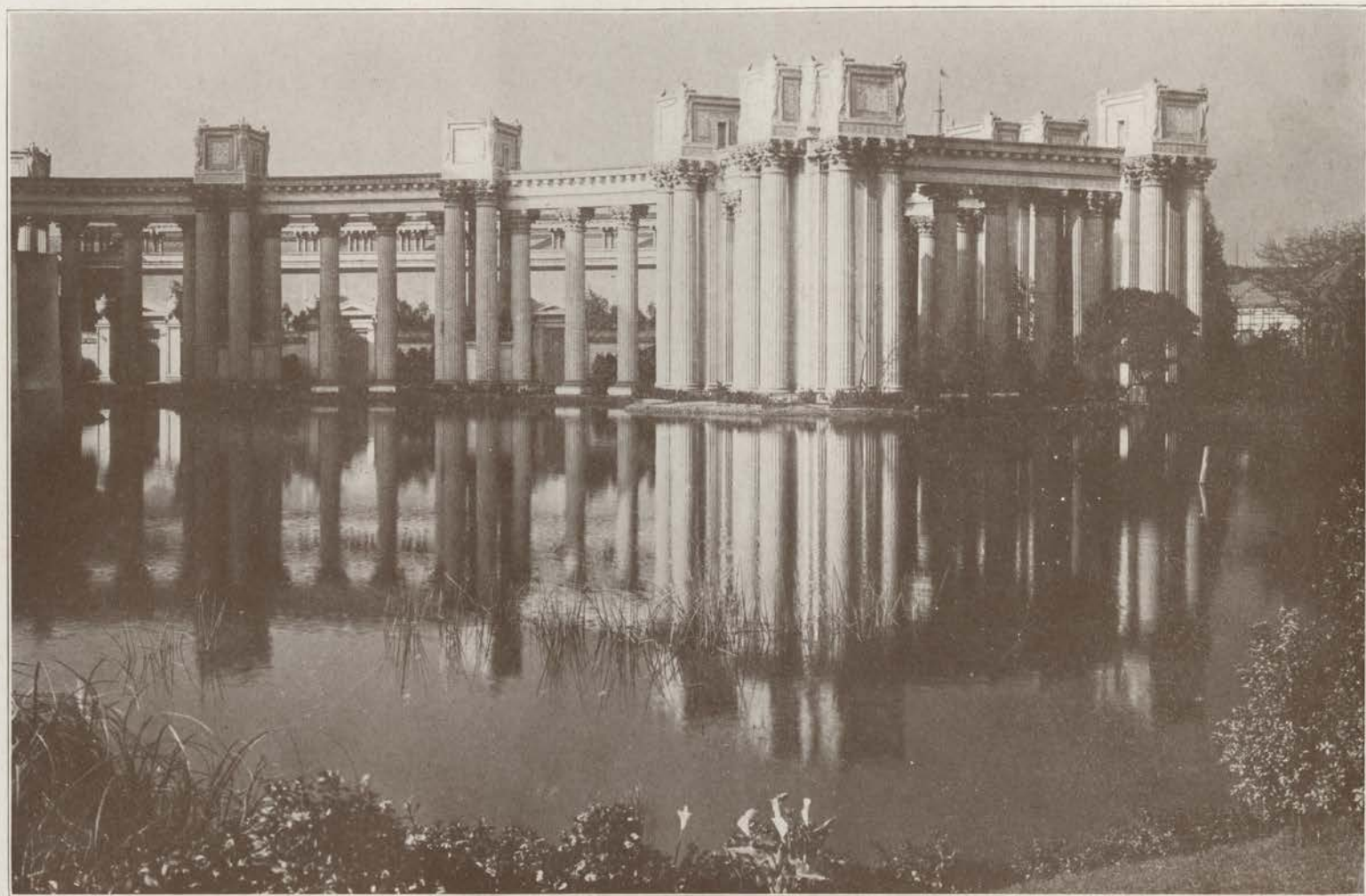
Court of Abundance. In the center is the huge Gothic Tower rising 270 feet in height. On the right may be seen the colonnade through which visitors pass.

Photograph, Underwood & Underwood, N. Y.





Court of Palms.

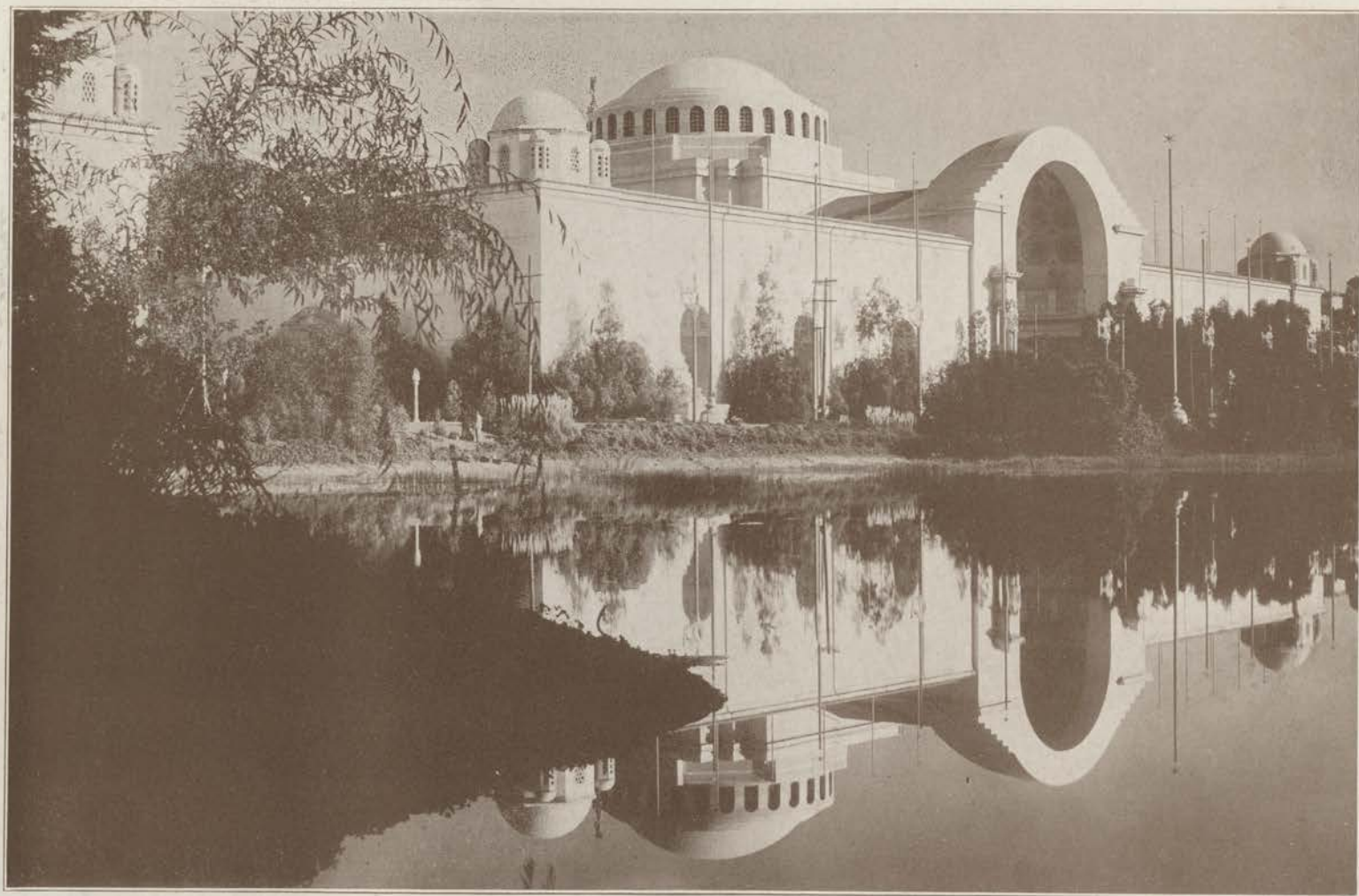


Colonnades of Palace of Fine Arts across the Lagoon.



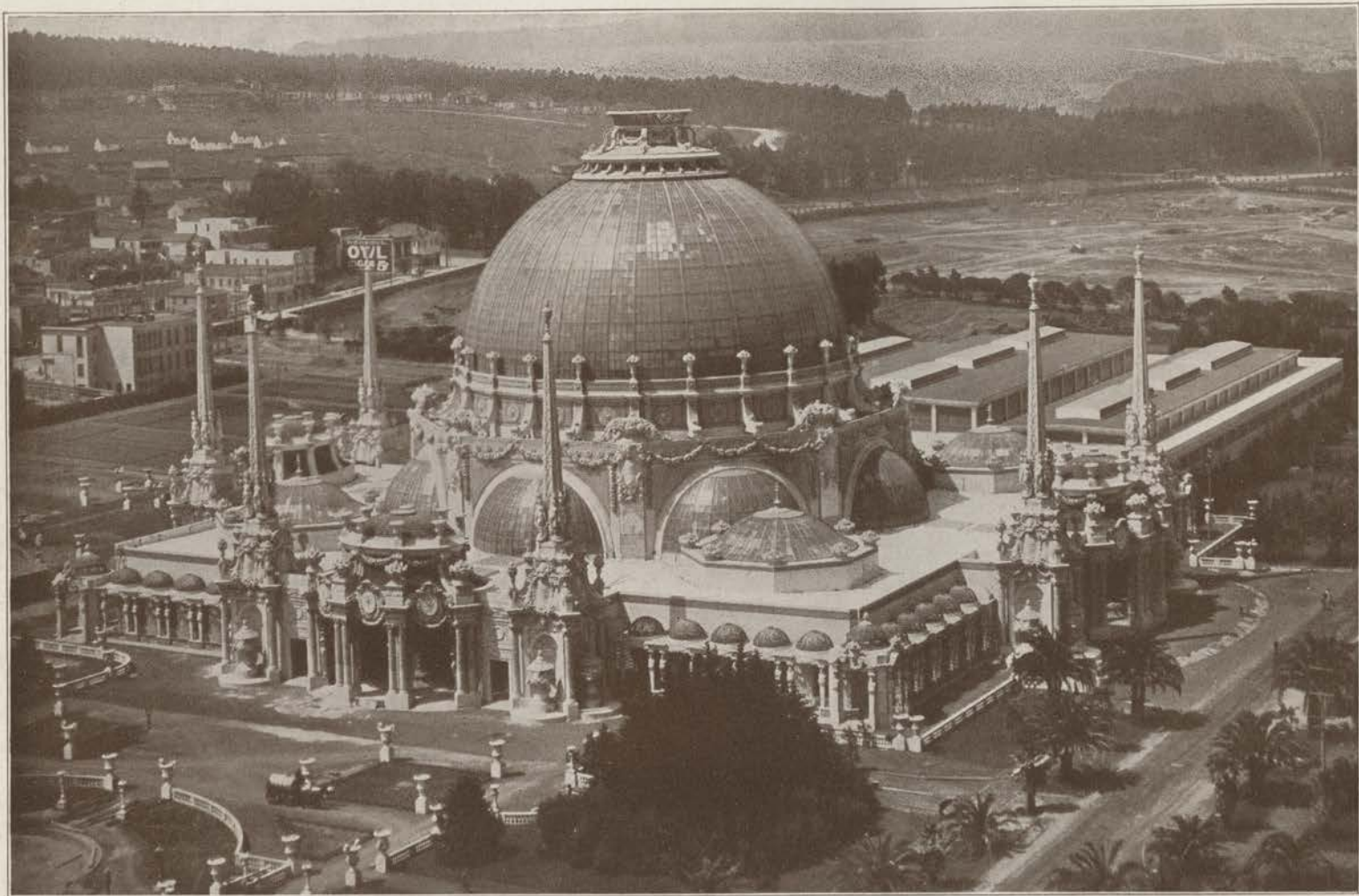


Looking South in the Court of the Four Seasons.



The Palace of Education across the Lagoon.



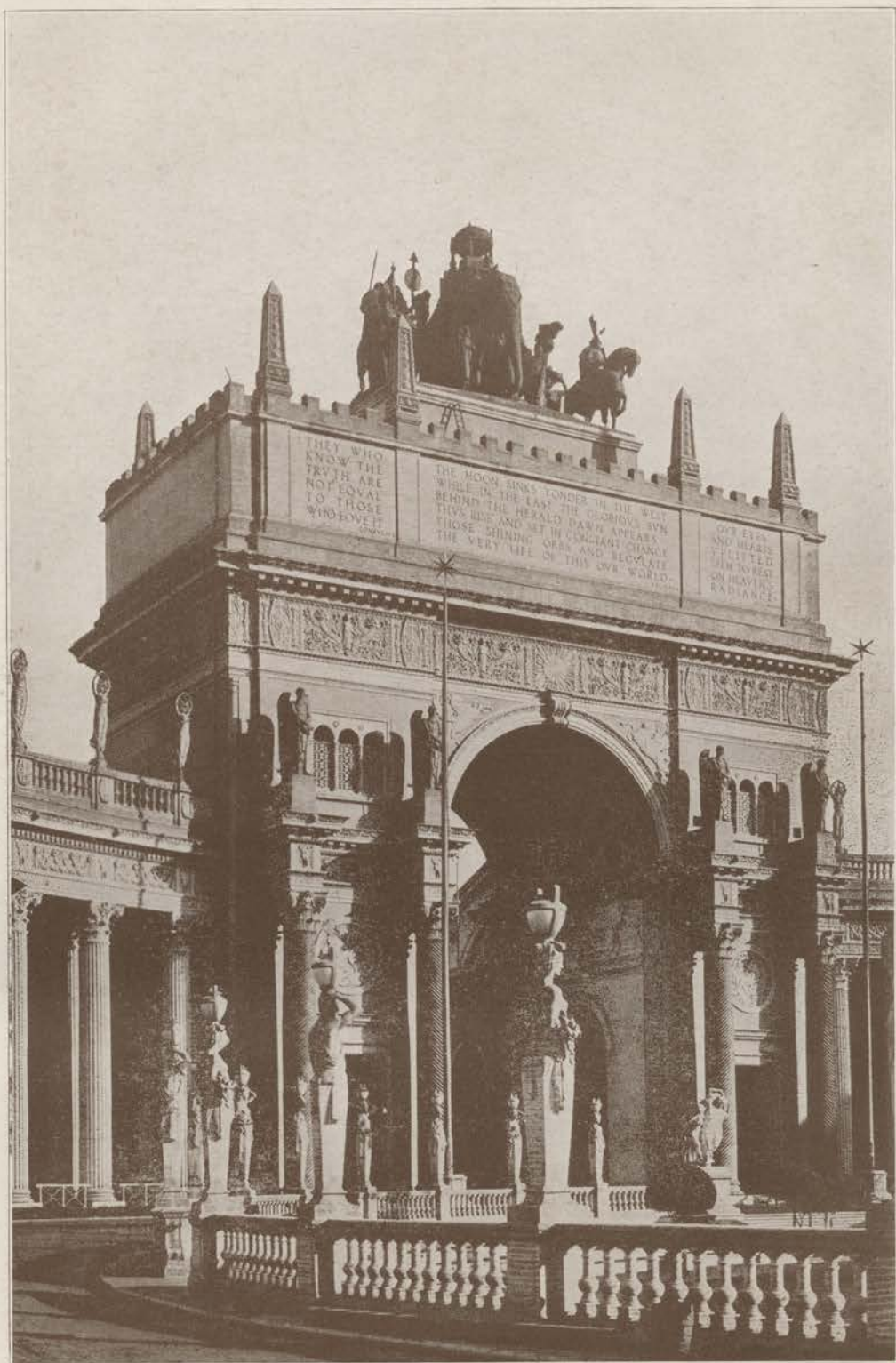


Palace of Horticulture, one of the most notable structures of the kind ever built, being composed almost entirely of glass.

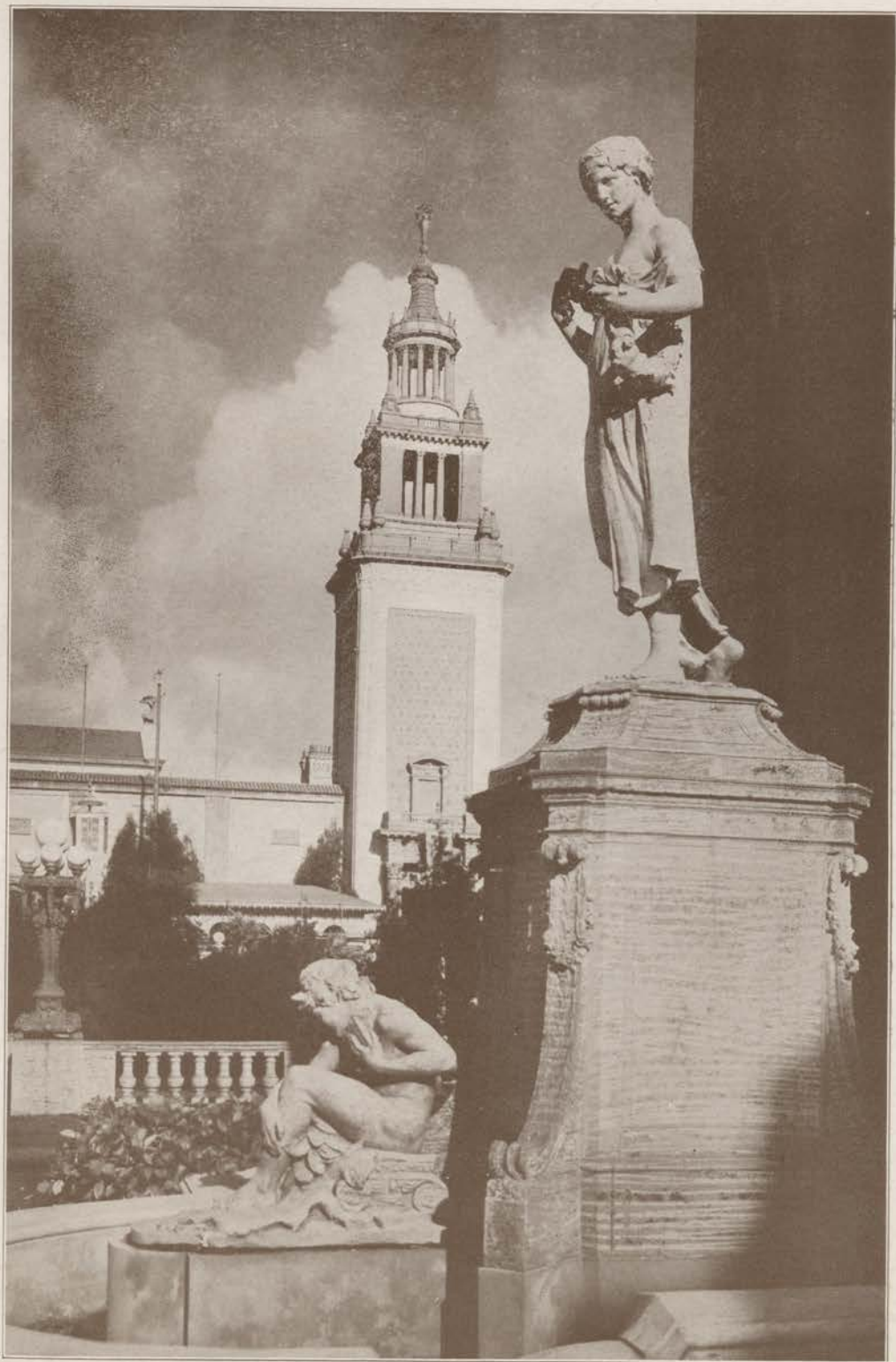


Looking across the South Gardens towards the Avenue of Palms.



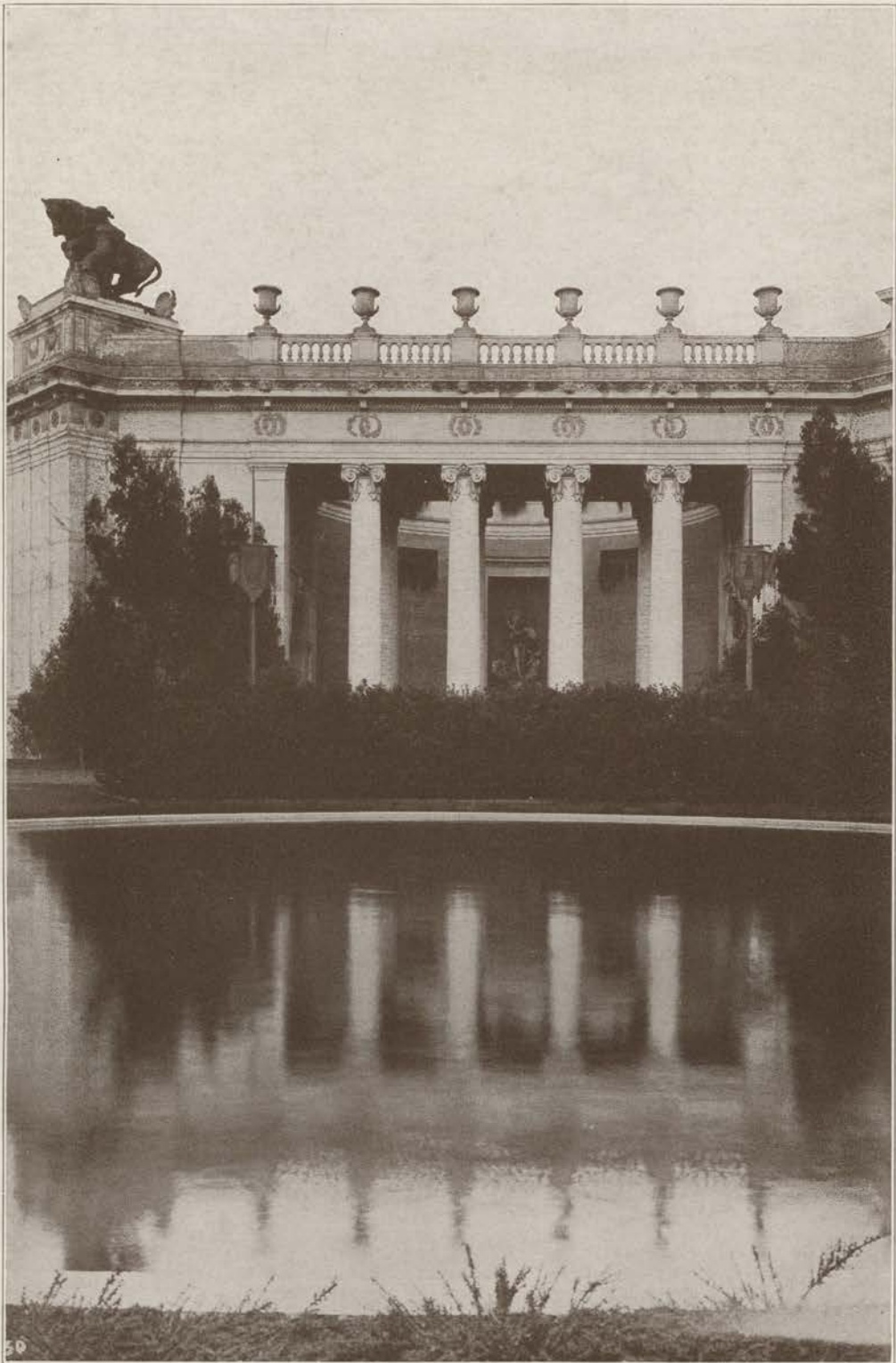


Arch of the Rising Sun across the Court of the Universe.



Sculpture Outside of Festival Hall, by E. Fry.



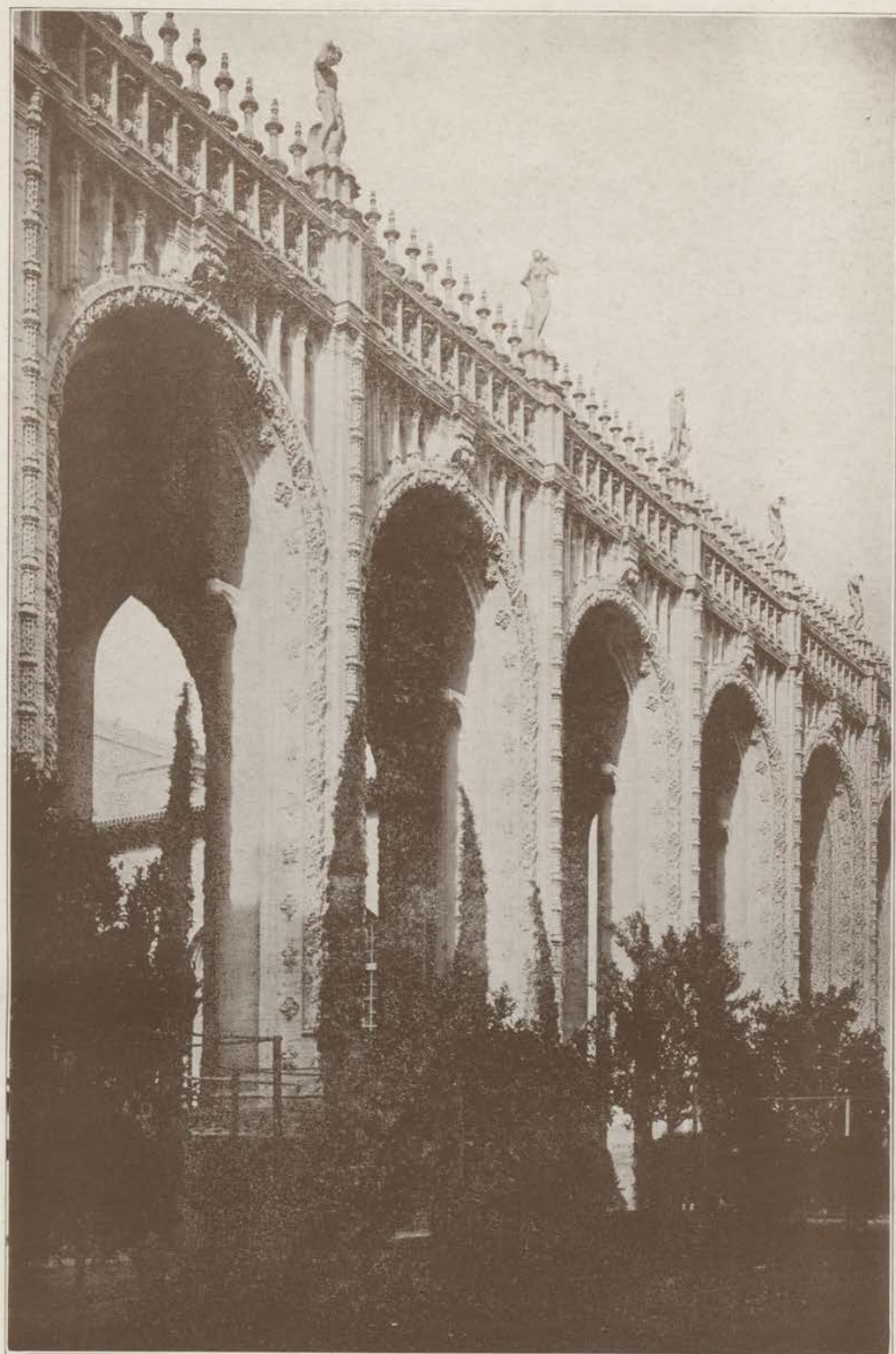


Niche in the Court of Four Seasons.



Italian Tower at Entrance of Court of Palms.





Court of Abundance.



Oregon State Building.



Washington State Building.





New York State Building, showing the crowd at dedication services.



Dedication services at the Maryland State building.



Dedication services at the Kansas State building.



Illinois State Building.





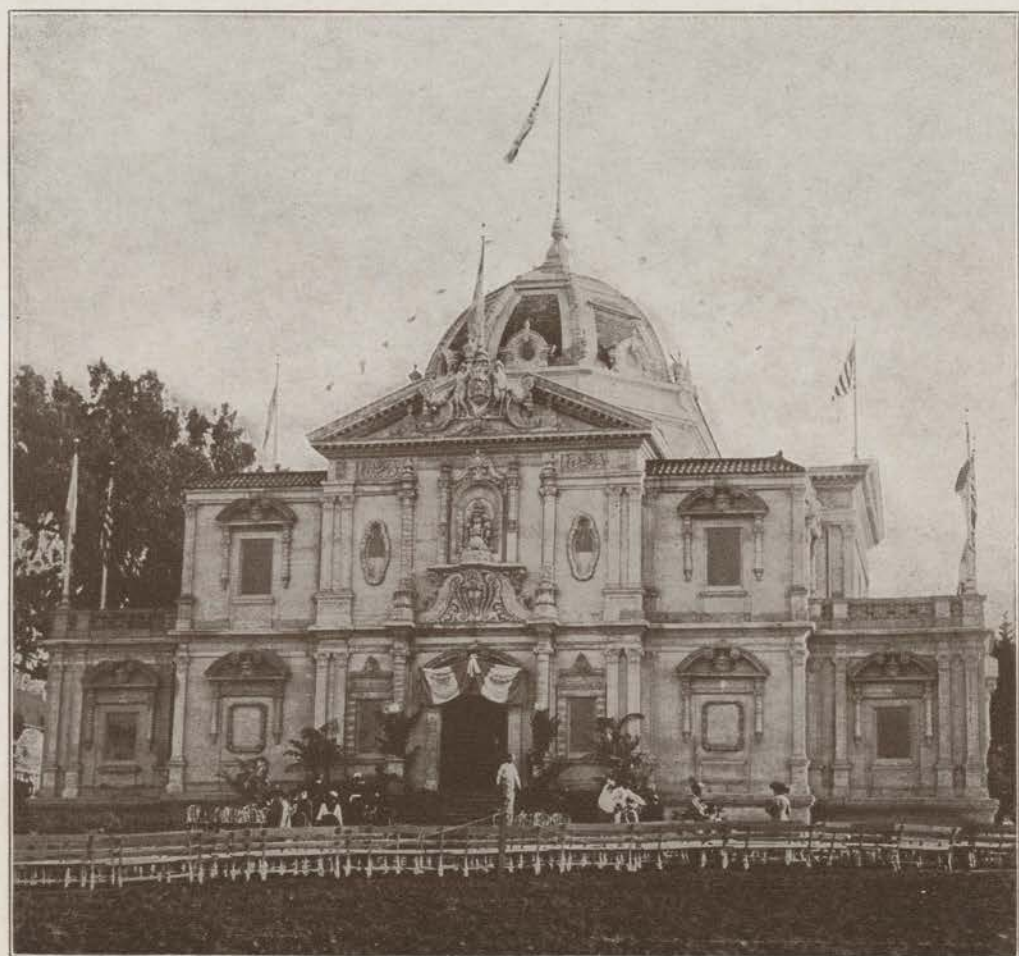
Hawaiian Building, showing dedication ceremonies.



Canadian Building, showing dedication ceremonies.

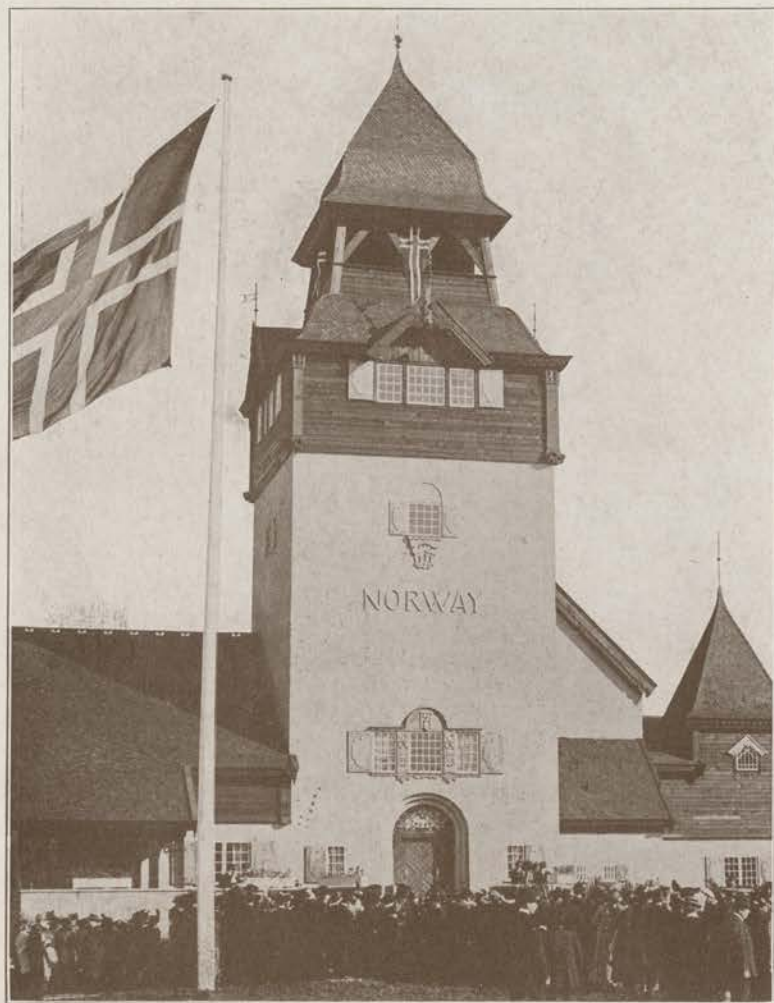


Australia Building.



Guatemala Building.





Norway Building, showing dedication ceremonies.



Holland Building.



China Exhibit—Panama-Pacific International Exposition.



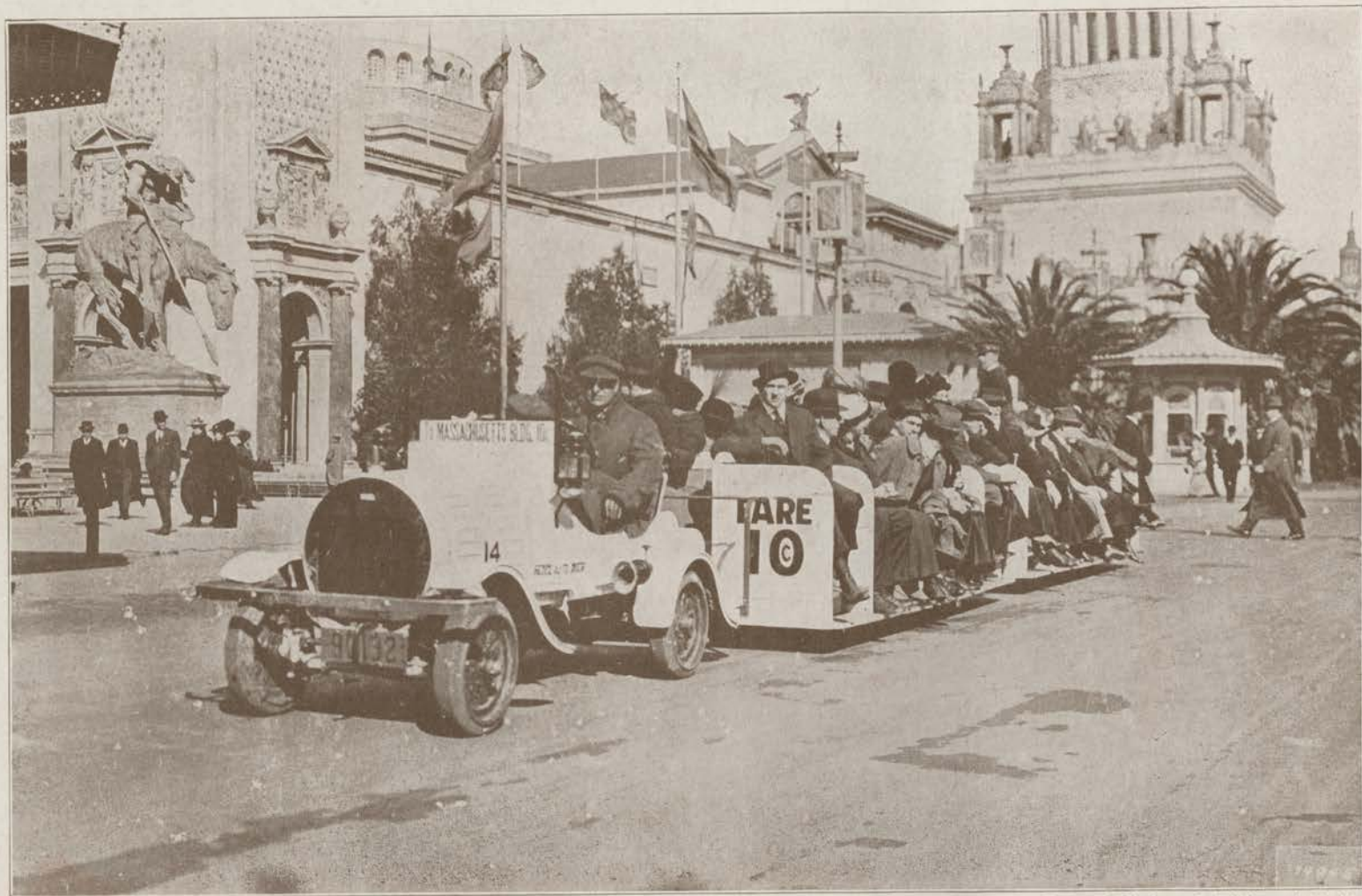


General view of the Panama-Pacific International Exposition, showing the beautiful Tower of Jewels in the center rising to a height of 430 feet, from which the size of the exhibit palaces may be judged.



Panorama view showing a section of San Francisco's business center. More than four square miles of the city has recently been built at a cost exceeding that of the Panama Canal.

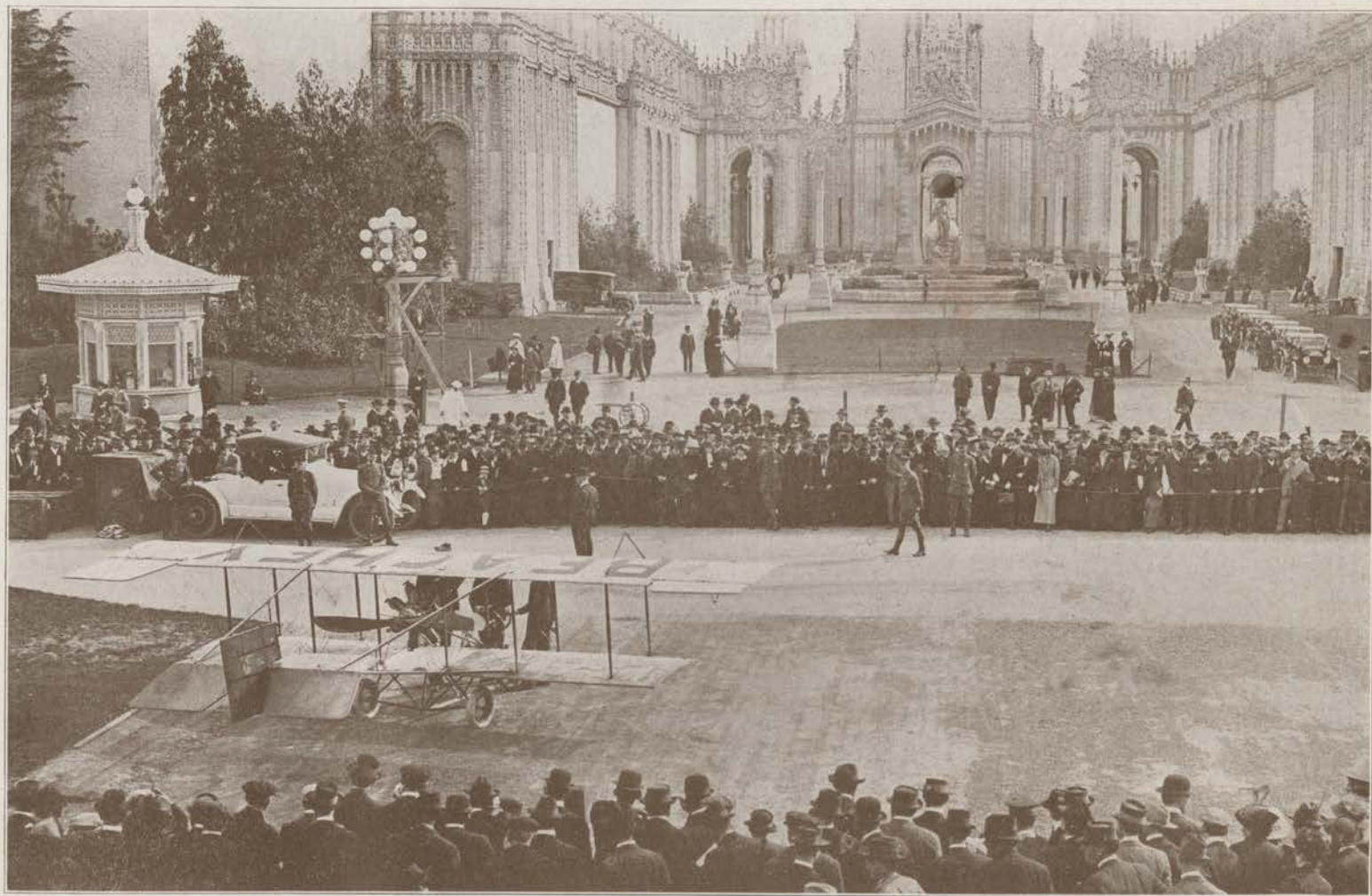




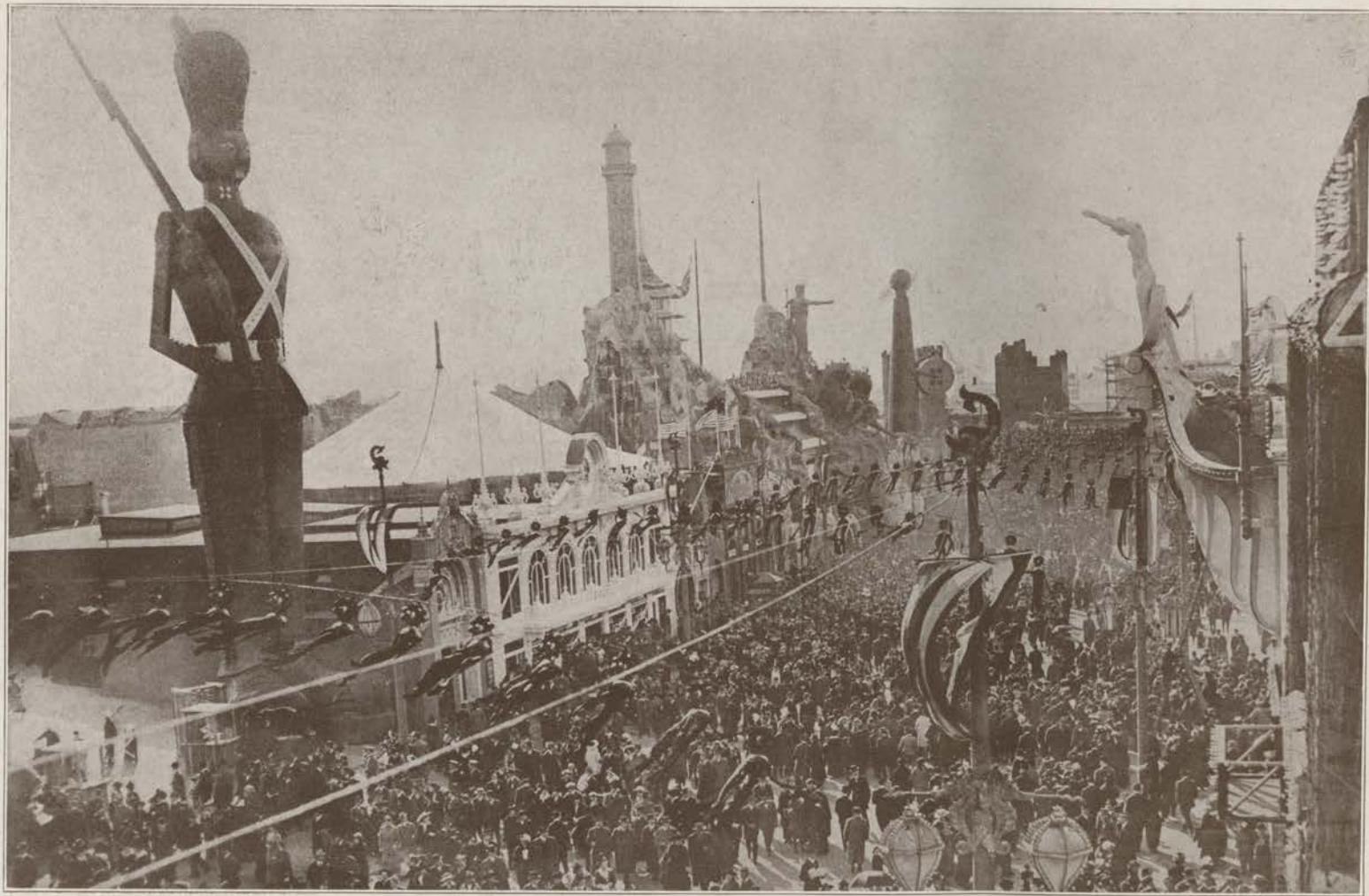
Photograph, Underwood & Underwood, N. Y.

A Small Automobile Train which carries the exposition visitors from one end of the grounds to the other for 10c.





Beachey, the Human Bird, about to go up in front of the entrance to Court of Abundance.



The Joy Zone—Go as far as you like, the sky is the limit.





General view of the Grandstand, showing Vanderbilt Cup races—San Francisco Exposition



A portion of San Francisco's water front as seen from the bay. The high tower raising 225 feet is the Ferry Building at the foot of Market street, the busiest ferry station in the world, more than one million people passing through its gates every week in the year.





A Glimpse of San Francisco's Chinatown, of which there are more than 8,000 population.

## San Diego Panama California Exposition—Open all the year of 1915



The Plaza de Panama, from the Washington Building, San Diego Exposition.

Photo. Supplied by Underwood & Underwood, N. Y.

San Diego, The Rainbow City, where summer never dies, where it is always June time, where they use the shortest thermometers in the world, which makes it possible to keep the Exposition open for the entire year.

The San Diego Exposition is unique and quite different from any previous exposition. It bears all the quaintness of a Fifteenth Century walled city. The buildings are all white, old Spanish Palace style of architecture, quaint, romantic and beautiful.

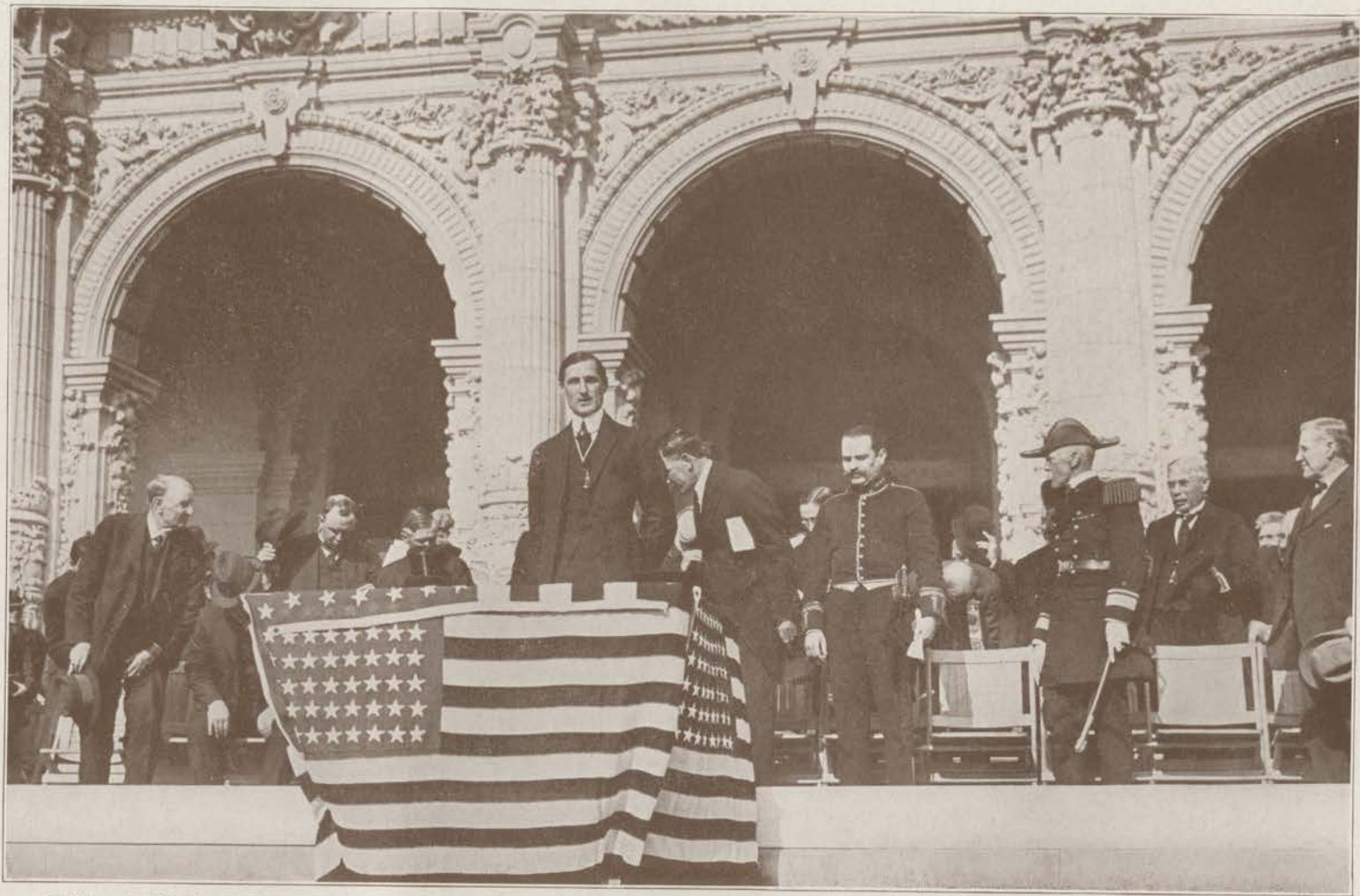
Once inside the magic walls the present disappears, the turmoil of the busy world is forgotten; the old Spanish days of California return. It is sweet to dwell in the romance of the old days. It is a dream that has come true and it is all surrounded by a landscape of tropical verdure.

The Exposition presents to the world man's history from prehistoric stone age to the present time.

Horticulture is one of the big features of the Exposition. It contains every known specimen of plant life in the world, which it has been possible to transport and transplant.

San Diego Exposition has cost more than ten million dollars. The Exposition has been built on the site of Balboa Park and comprises 625 acres; has a commanding view of the surrounding country overlooking the city and beautiful bay.





William G. McAdoo, Secretary of the Treasury, and President Wilson's personal representative, addressing the thousands who thronged the Plaza de Panama to attend the opening exercises. In uniform to the right are: Count de Valle de Salazar, personal representative of King Alfonso XIII of Spain, and Rear Admiral Thomas Benton Howard, Commander of the Pacific Fleet.



Lagoona de Los Flores—From the Home Economy Building.

Photo Supplied by International News Service.





Looking East along the Prado.

Photo Supplied by International News Service.



A sectional view of the San Diego Exposition.

Photo Supplied by International News Service.





Varied Industries Building, from across El Prado—San Diego Exposition. Photo Supplied by Underwood & Underwood, N. Y.



Commerce and Industries Building.

Photo Supplied by Underwood & Underwood, N. Y.





New Mexico State Building.



Photo Supplied by International News Service.  
Colonnade at the entrance of the Commerce and Industries Building.





Photo Supplied by International News Service.  
Patio within the Southern California Building, San Diego Exposition.



In the Botanical Gardens—San Diego Exposition.

Photo Supplied by Underwood & Underwood, N. Y.





Photo Supplied by Underwood & Underwood, N. Y.  
A tropical scene in the Botanical Building—Panama-California Exposition, San Diego.



Along La Via de los Estados toward the Plaza de Panama.

Photo Supplied by International News Service.





Home Economy Building on the Plaza de Panama.

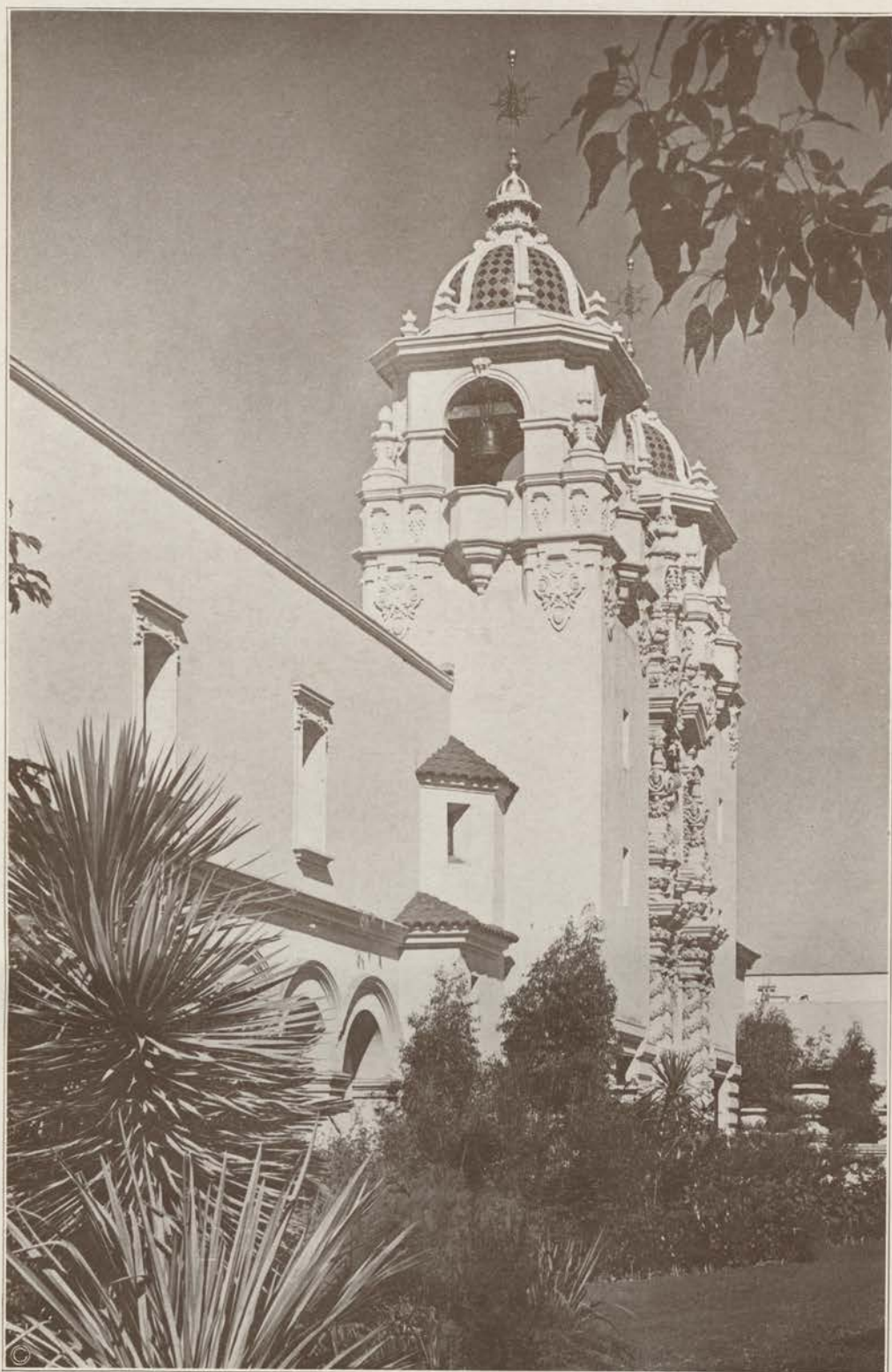


Photo Supplied by Underwood & Underwood, N. Y.  
**Mission Bells by a tropical garden.**





Photo Supplied by International News Service.  
Looking Westward on the El Prado.

SP  
RARE  
TC  
781  
.01  
V5  
1915



Photo Supplied by Underwood & Underwood, N. Y.

From the shrubbery by La Puerta del Oeste, San Diego Exposition.



A section of the business center of San Diego. The city has a population of one hundred thousand.