

INFORMAL REPORT AND INDEX OF
NAVIGATION, DEPTH, MAGNETIC AND SUBBOTTOM PROFILER DATA
(Issued October 1988)

TORTUGA EXPEDITION

LEG 3

=====

R/V Washington

Academy Bay, Galapagos (3 December 1987)
to
San Diego, California (16 December 1987)

Chief Scientist - M. Riedesel
University of Texas, Austin

Resident Marine Technician - E. Pillard

Post-Cruise Processing and Report Preparation
by Geological Data Center, Scripps Institution of Oceanography

Data Collection and Processing Funded by NSF
Grant Number OCE87-02835

NOTE: This is an index of underway geophysical data edited and processed after the completion of the cruise leg and is intended primarily for informal use within the institution. This document is not to be reproduced or distributed outside Scripps without prior approval of the chief scientist or the Geological Data Center, Scripps Institution of Oceanography, La Jolla, California 92093.

GDC Cruise I.D.# 237

INFORMAL REPORT AND INDEX OF NAVIGATION
AND UNDERWAY GEOPHYSICAL DATA

Processed by the Geological Data Center
Scripps Institution of Oceanography

Contents:

Index Chart - gives track of cruise leg, dates, ports, and mileage of each type of data collected.

Track Charts - annotated with dates and hour ticks.

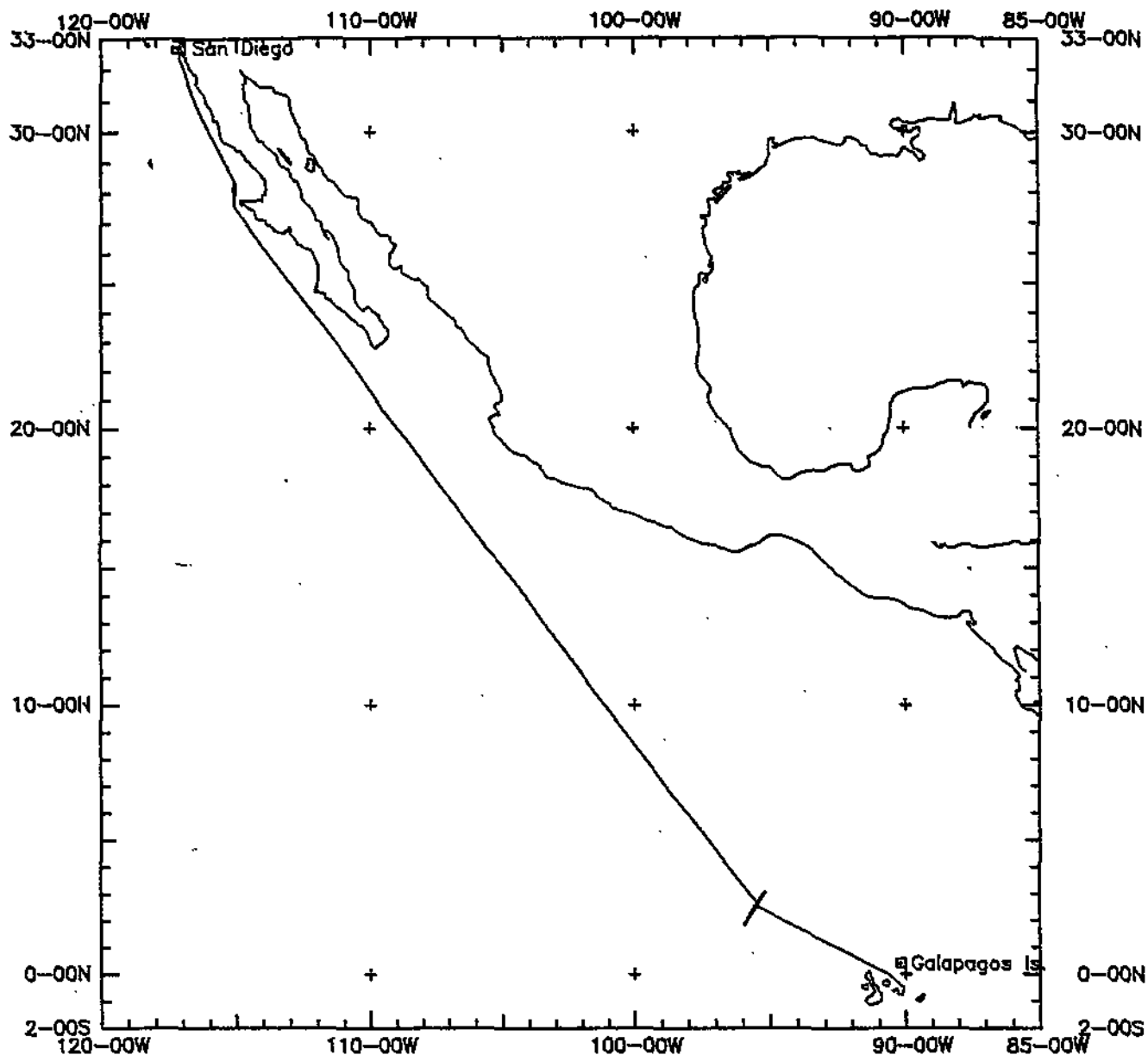
Profiles - depth, magnetic anomaly and gravity free air anomaly vs. distance. Sections of track having subbottom profiles (airgun or watergun) records have a wide black line along the bottom of the profile. Sections having Sea Beam are indicated by a narrow black line.

Sample Index - list of beginning and end times and positions of all underway records as well as all other samples and measurements (geology, biology, physical oceanography, etc.) collected on the cruise leg.

NOTE: One or more of the underway data types may not be collected on a given cruise leg.

For information on the availability and reproduction costs of data in the following forms, contact S. M. Smith, Curator, Geological Data Center, Scripps Institution of Oceanography, La Jolla, CA 92093. Phone (619)534-2752.

1. Navigation listing with times and positions of course and speed changes, fixes and drift velocity.
2. Depth compilation plots - compilation plots at the traditional scale of 4in/degree longitude (1:1,000,000) are no longer produced for Sea Beam cruises. Custom plots may be requested of vertical beam (2 $\frac{2}{3}$ degree beam width) depths retrieved at one minute intervals of ship time.
3. Plots of depths, magnetics or gravity profiles along track - custom plots at various map and profile scales on Mercator projection may be requested.
4. Separate time series files of navigation, depth, gravity and magnetics as well as these data merged in the MGD77 Exchange format on magnetic tape.
5. Microfilm or Xerox copies of:
 - a. Echosounder records - 12 and 3.5 kHz frequency
 - b. Subbottom profiler records
 - c. Magnetometer records
 - d. Underway data log book



TORTUGA LEG 3 (TUGA03WT)

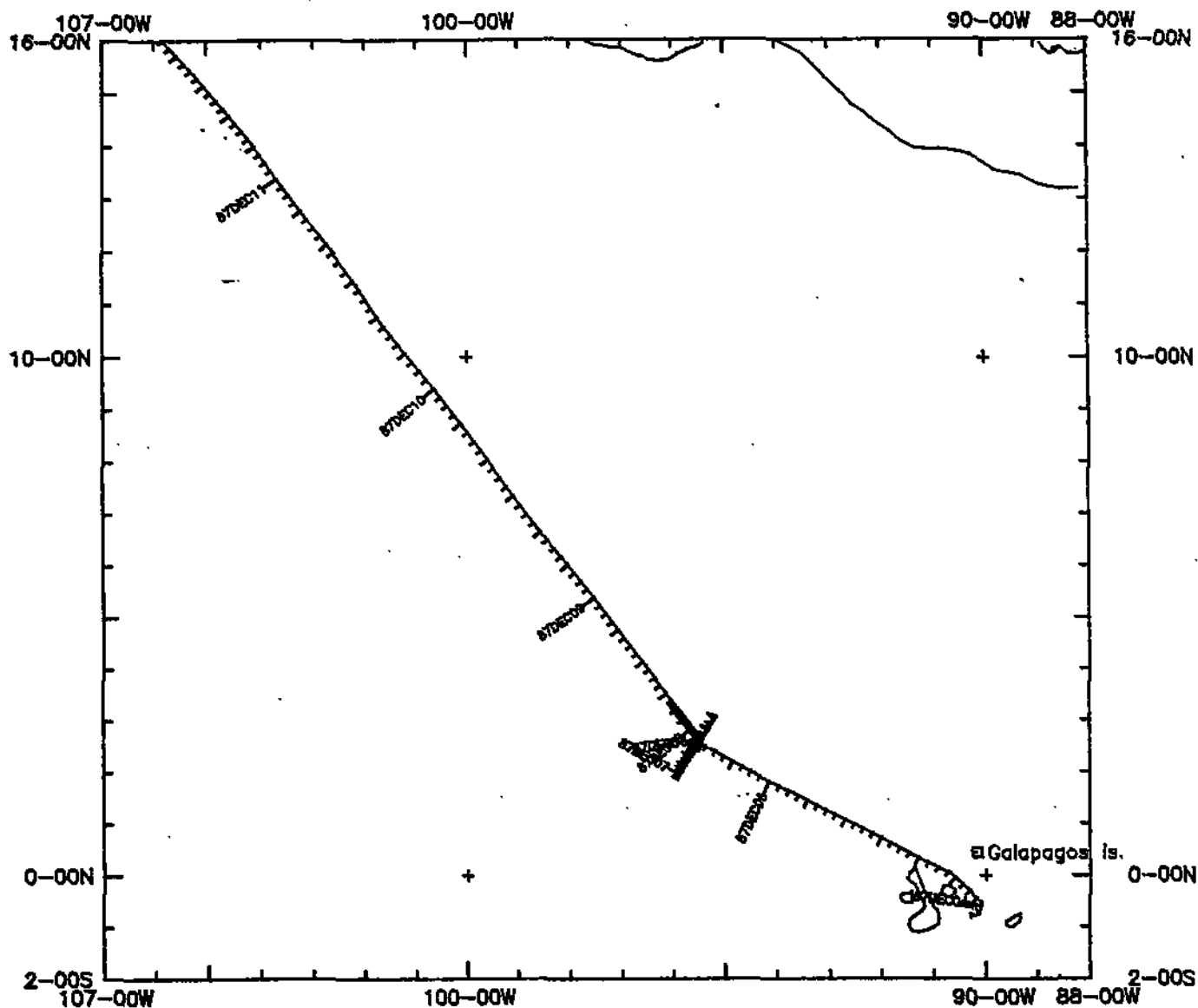
Track at .1632in/deg

TORTUGA EXPEDITION LEG 3

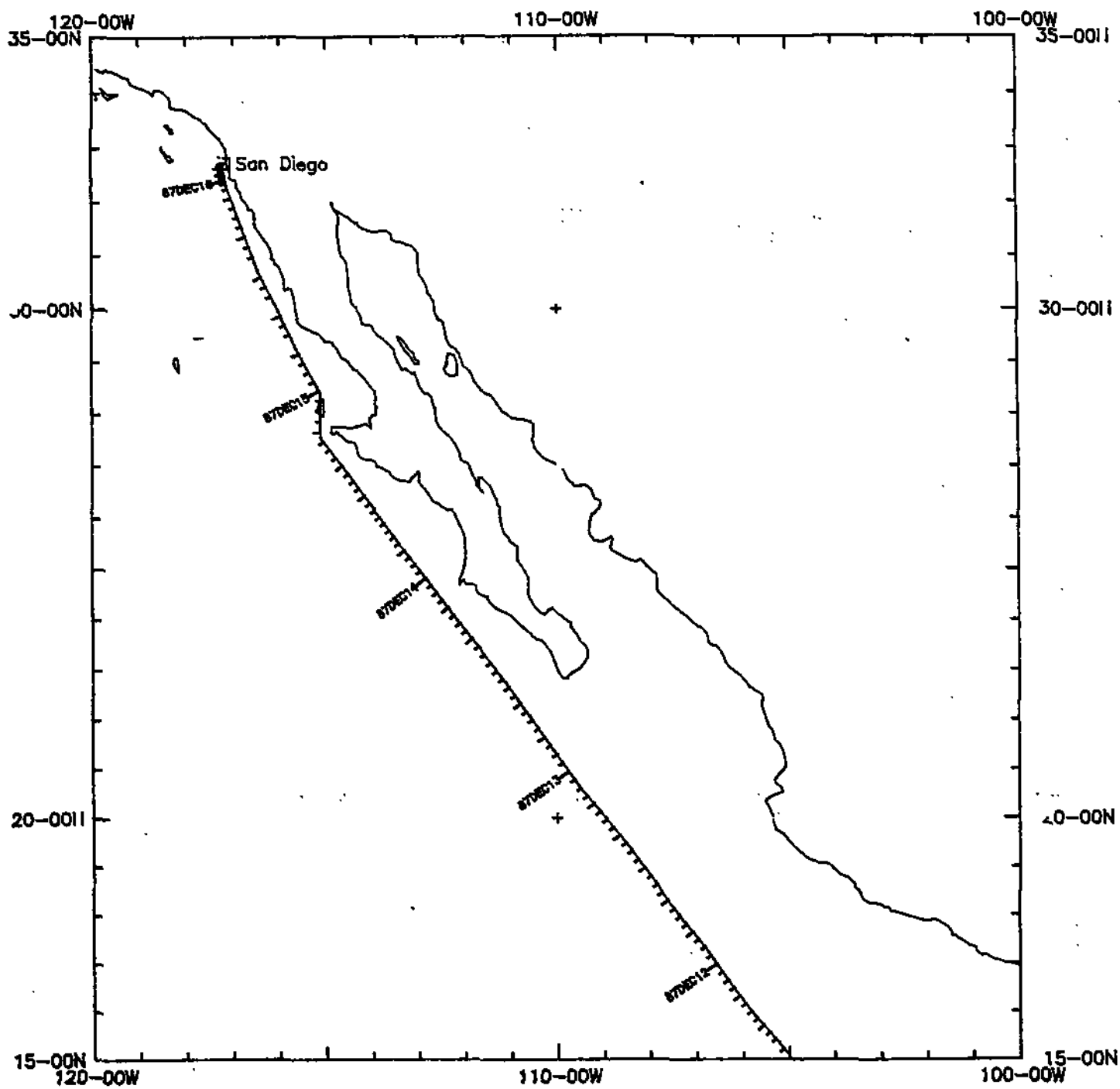
CHIEF SCIENTIST: M . Riedesel (Univ. of Texas, Austin)
 PORTS: Academy Bay, Galapagos - San Diego, California
 DATES: 3 December - 16 December 1987
 SHIP: R/V T. Washington

TOTAL MILEAGE OF UNDERWAY DATA COLLECTED

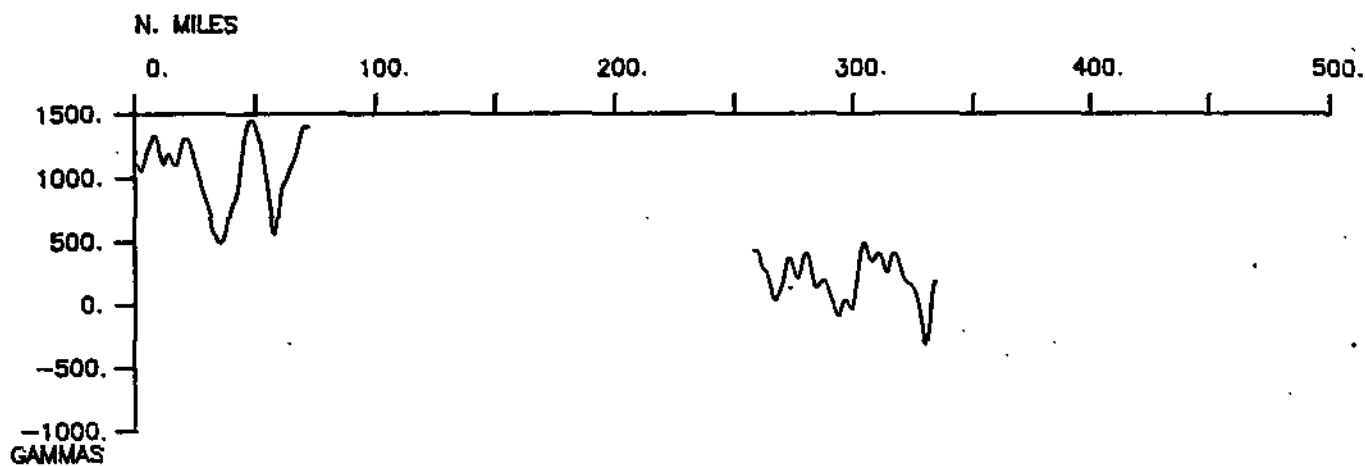
- 1) Cruise - 3893 miles
- 2) Bathymetry - 1835 miles
- 3) Magnetics - 1615 miles
- 4) Seismic Reflection - none collected
- 5) Gravity - 3893 miles
- 6) Sea Beam - none collected



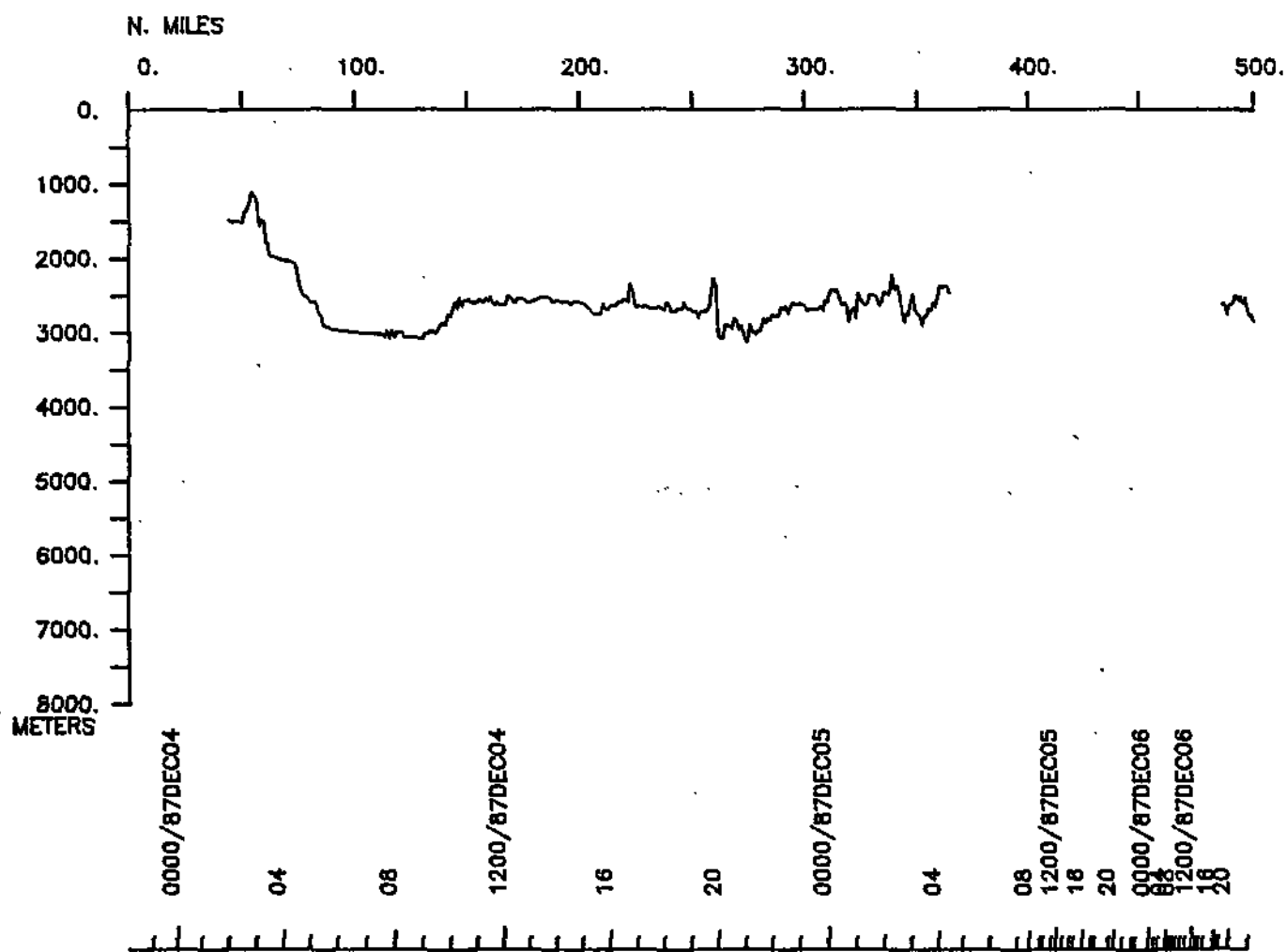
TORTUGA LEG 3 (TUGA03WT)
Track 1 of 2 at .312in/deg

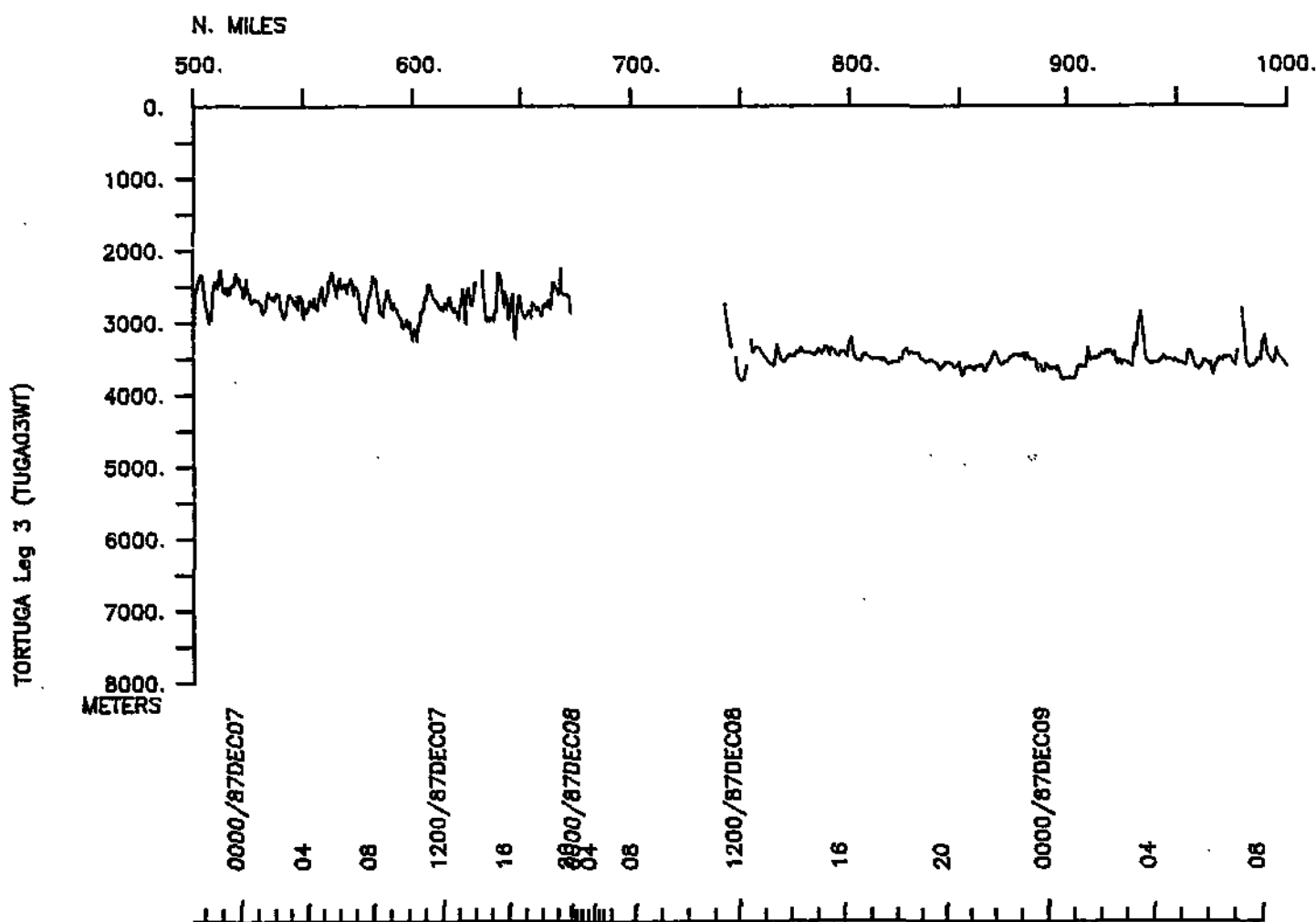
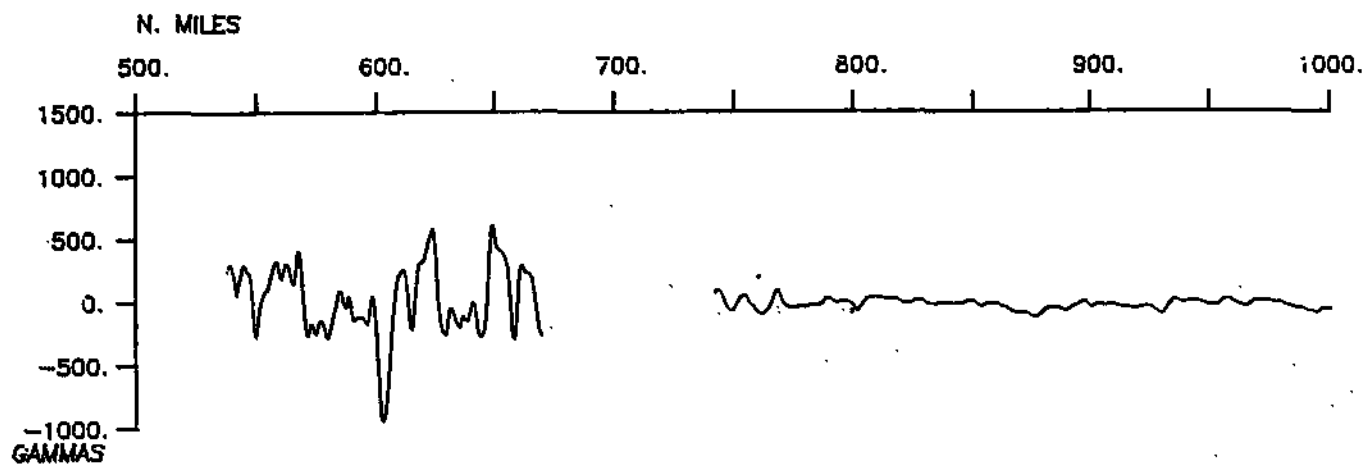


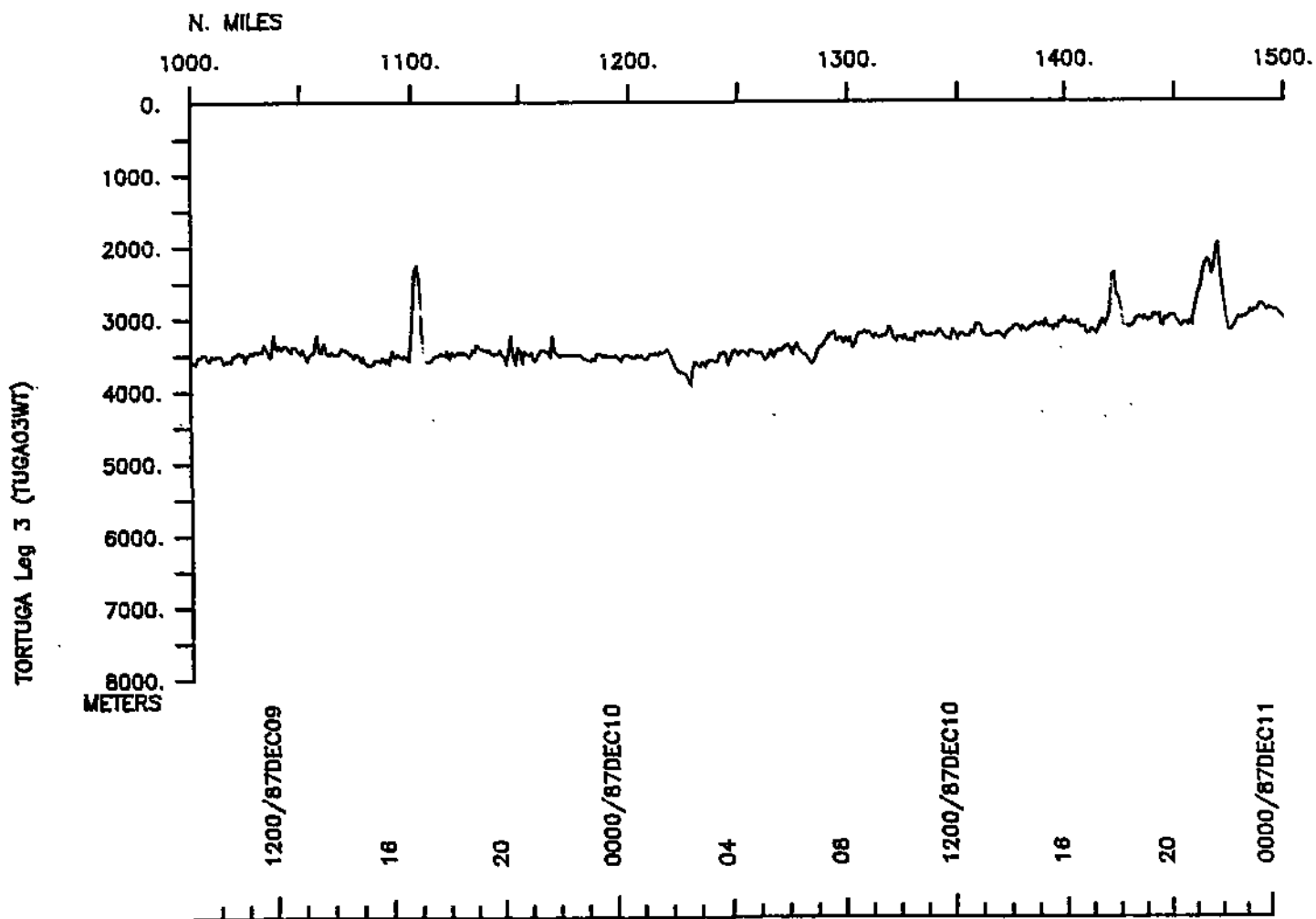
TORTUGA LEG 3 (TUGA03WT)
Track 2 of 2 at .312in/deg

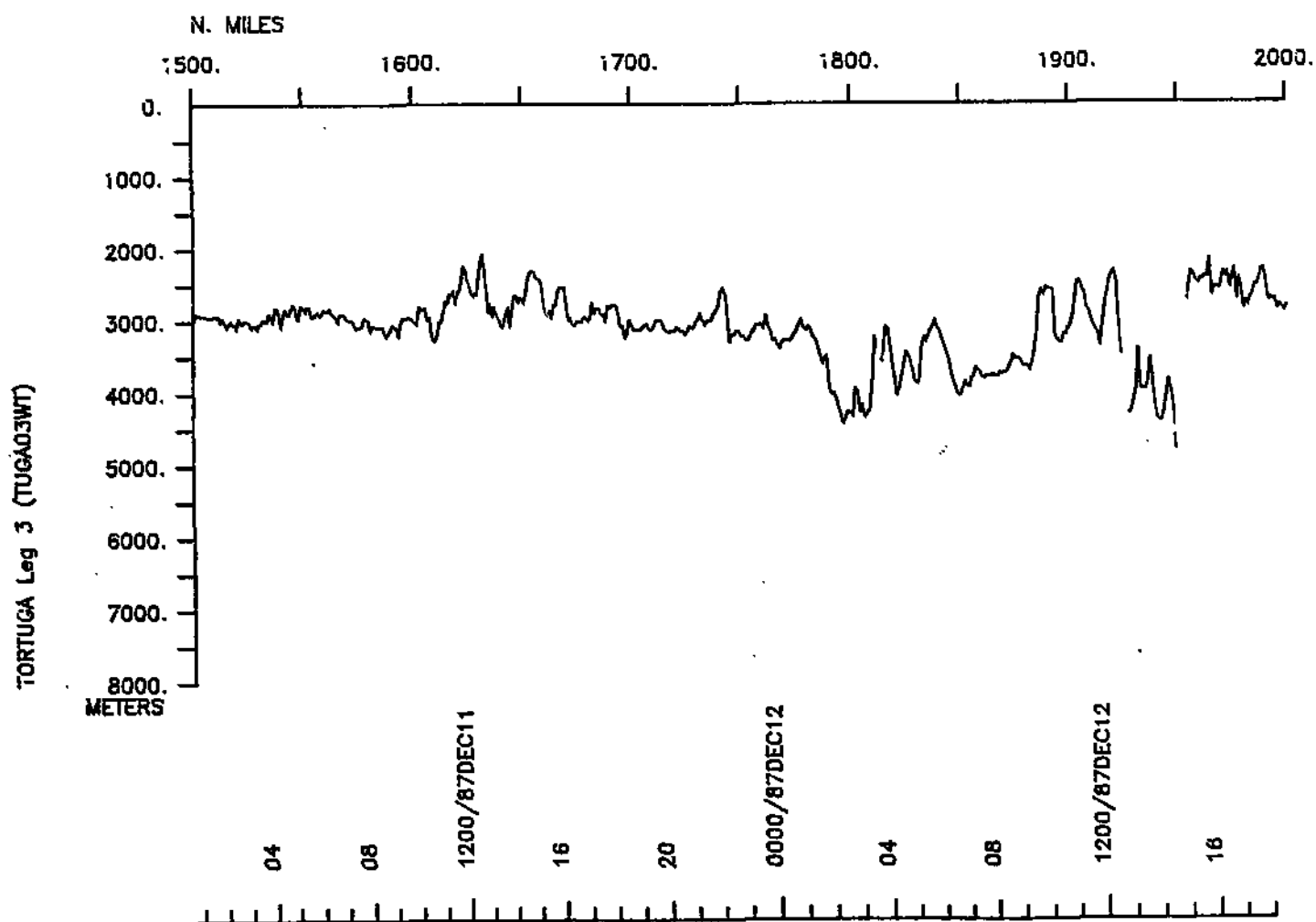
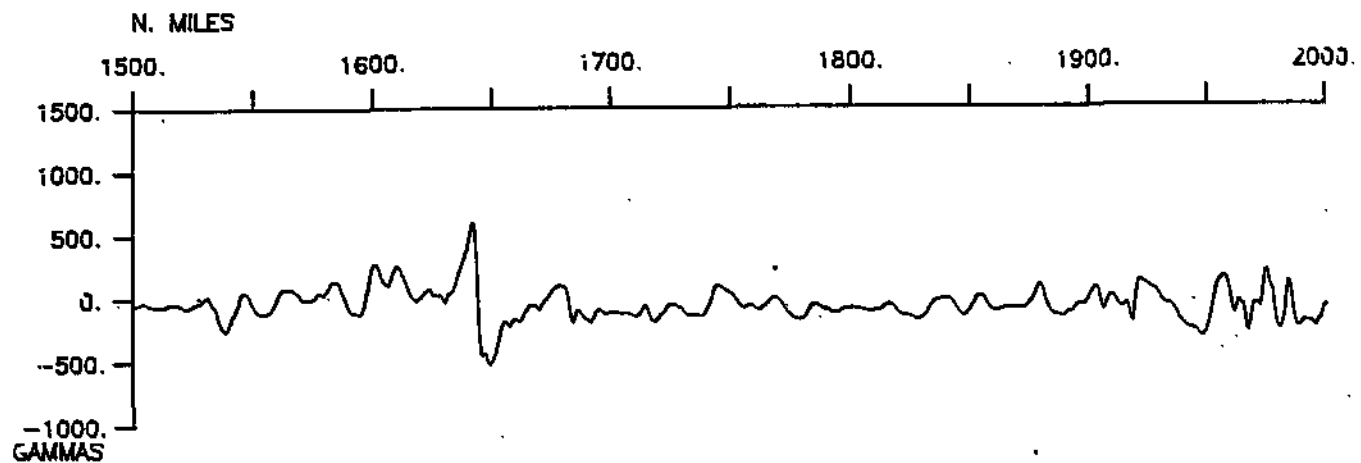


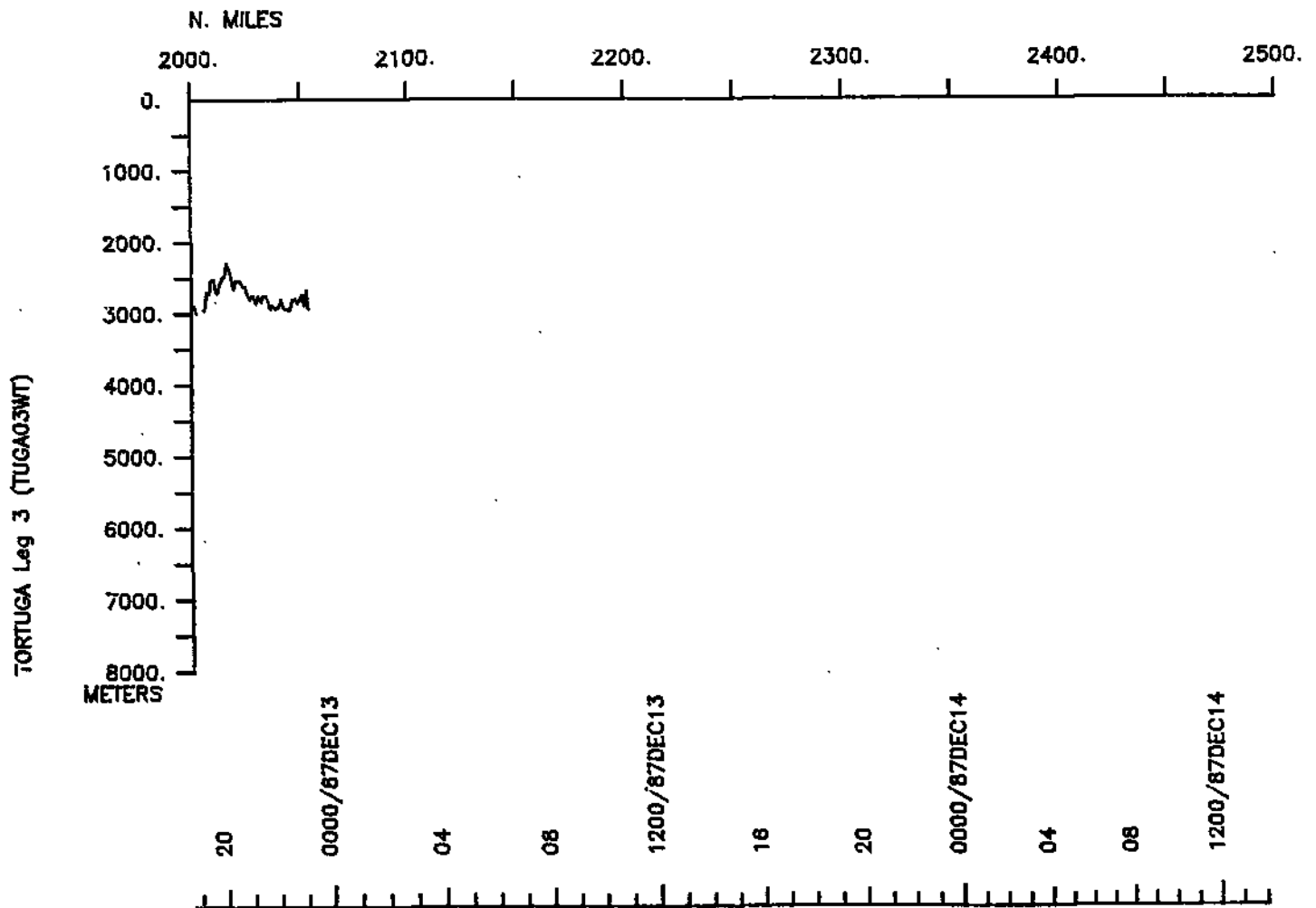
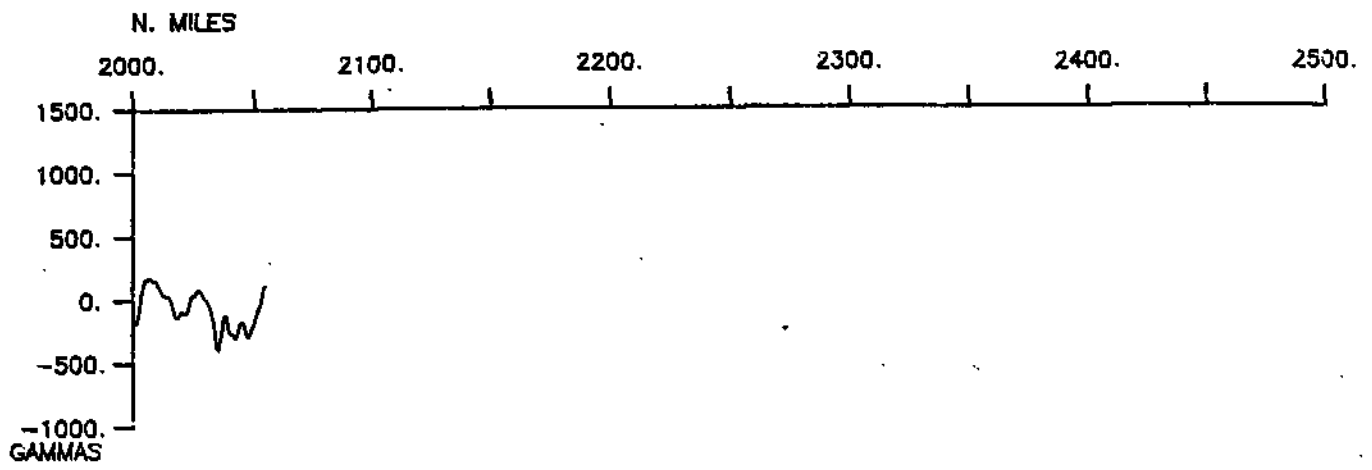
TORTUGA Leg 3 (TUGA03WT)



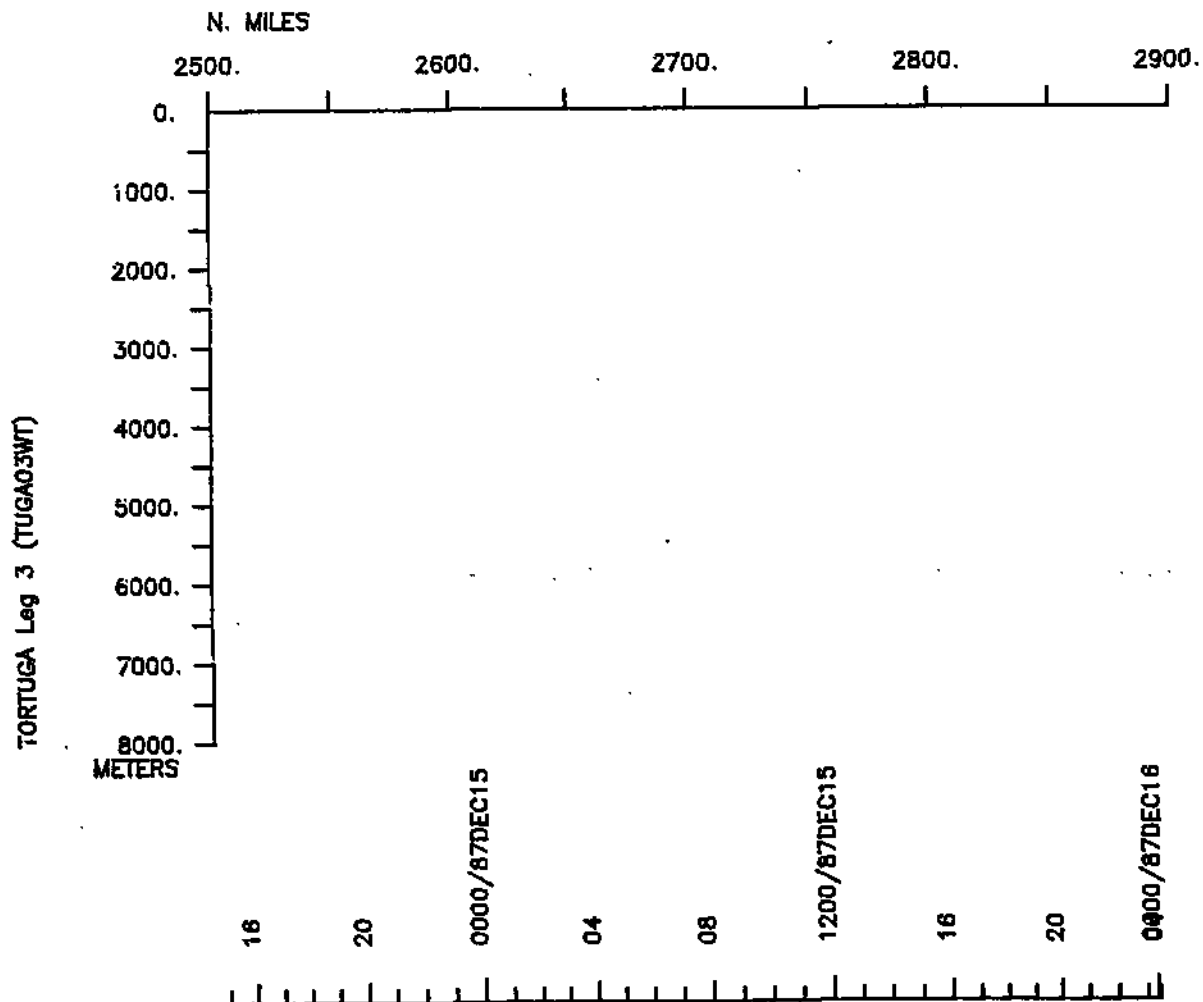
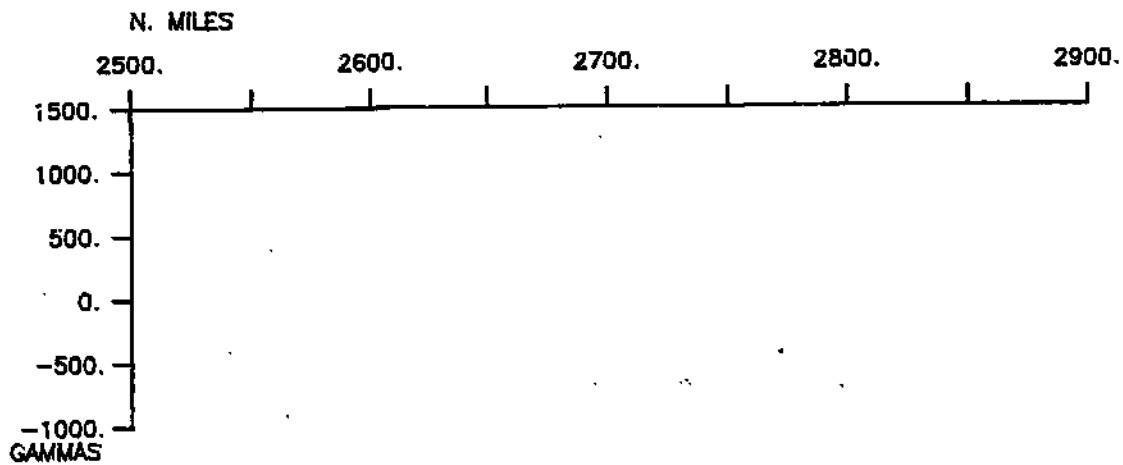








TORTUGA Leg 3 (TUGA03WT)



S.I.O. SAMPLE INDEX

(Issued October 1988)

TORTUGA EXPEDITION

Leg 3

=====

R/V T. Washington

Academy Bay, Galapagos (3 December 1987)
to
San Diego, California (16 December 1987)

Chief Scientist - M. Riedesel

University of Texas, Austin

The Sample Index is a first level interdisciplinary listing of time, position, sample identification and disposition of all samples, records and measurements collected on this cruise leg. The index data are encoded at sea by the resident marine technician and processed on shore by the S.I.O. Geological Data Center shortly after the completion of the cruise leg.

Positions are interpolated on the basis of sample time by comparison to a single, edited navigation file. Samples beginning at one time and position and ending at another are entered on two consecutive lines. Disposition and sample type are represented by three and four character codes to permit further computer searches on these parameters. (Listings defining these codes are available from the Geological Data Center.)

GDC Cruise I.D.# 237

**** PORTS ****

2200 031287	LGPT B ACADEMY BAY, GALAPAGOS	0-54 S 89-36 W	ftUGA03WT
0000 161287	LGPT E SAN DIEGO, CALIF.	32-43 N 117-14 W	ftUGA03WT

**** PERSONNEL ****

	NAME	***TITLE***	***AFFILIATION***	**CRID**
PECS UTA	RIEDELSEL, M.	CHIEF SCIENTIST	U. OF TEXAS, AUSTIN	TUGA03WT
PEST GRD	AJA, A.	GRAD STUDENT	SCRIPPS INSTITUTION	TUGA03WT
PEVL IGP	BRUNO, A.E.	VOLUNTEER	NON-SCRIPPS EMPLOYEE	TUGA03WT
PESP IGP	HOLLINSHEAD, C.	ELECT. TECH	SCRIPPS INSTITUTION	TUGA03WT
PEST GRD	KIM, I.	GRAD STUDENT	SCRIPPS INSTITUTION	TUGA03WT
PESP IGP	LAHAV, D.	RESEARCH ASSIST	SCRIPPS INSTITUTION	TUGA03WT
PECT STS	MOORE, M.	COMPUTER TECH	SCRIPPS INSTITUTION	TUGA03WT
PERT STS	PILLARD, E.G.	RESIDENT TECH	SCRIPPS INSTITUTION	TUGA03WT
PEVL IGP	TOELKES, P.	VOLUNTEER	NON-SCRIPPS EMPLOYEE	TUGA03WT

****NOTES****

#AN 'X' IN THE (B)EGIN/(E)ND COLUMN FOLLOWING THE SAMPLE CODE INDICATES NO
 #SAMPLE OR DATA RECOVERED. A 'C' INDICATES CONTINUATION OF DATA COLLECTION
 #FROM BEFORE THE BEGINNING OR AFTER THE END OF A PARTICULAR LEG. (MOORED
 #BOTTOM INSTRUMENTS, FOR EXAMPLE.) THE NUMBER APPEARING IN THE COLUMNS
 #BETWEEN THE SAMPLE IDENTIFIER AND THE DISPOSITION CODE, FOR MANY SAMPLE
 #ENTRIES, IS THE WATER DEPTH IN CORRECTED METERS. POSITIONS ARE IN TENTHS
 #OF MINUTES.

#GMT	DDMMYY	LOC T	SAMP	SAMPLE	DISP			CRUISE
#TIME	DATE	TIME Z	CODE	IDENTIFIER	CODE	LAT.	LONG.	LEG-SHIP

***UNDERWAY DATA CURATOR - S. M. SMITH EXT. 42752

*** LOG BOOKS ***

0200	041287		LBUW B	UNDERWAY WATCH LOG	GDC	0-176S	90-160W	sTUGA03WT
2304	121287		LBUW E	UNDERWAY WATCH LOG	GDC	20-470N	109-381W	sTUGA03WT

*** ECHO SOUNDER RECORDS ***

2200	031287		DPRT B	12 KHZ PDR R-01	GDC	0-454S	90-178W	sTUGA03WT
1418	071287		DPRT E	12 KHZ PDR R-01	GDC	3-040N	95-098W	sTUGA03WT
1425	071287		DPRT B	12 KHZ PDR R-02	GDC	3-048N	95-093W	sTUGA03WT
1813	101287		DPRT E	12 KHZ PDR R-02	GDC	12-286N	103-027W	sTUGA03WT
317	101287		DPRT B	12 KHZ PDR R-03	GDC	12-292N	103-031W	sTUGA03WT
304	121287		DPRT E	12 KHZ PDR R-03	GDC	20-470N	109-381W	sTUGA03WT

*** MAGNETIC (EARTH TOTAL FIELD) RECORD ***

0110	041287		MGRA B	MAGNETICS RECORD R-01	GDC	0-243S	90-086W	sTUGA03WT
2304	121287		MGRA E	MAGNETICS RECORD R-01	GDC	20-470N	109-381W	sTUGA03WT

*** GRAVIMETER - CONTINUOUS RECORDING ***

2200	031287		GVCR B	GRAVITY DATA	GDC	0-454S	90-178W	sTUGA03WT
0000	161287		GVCR E	GRAVITY DATA	GDC	32-414N	117-140W	sTUGA03WT

*** THERMOGRAPH RECORDS ***

2200	031287		TCRC B	THERMOGRAPH RECORDS	GDC	0-454S	90-178W	sTUGA03WT
0000	161287		TCRC E	THERMOGRAPH RECORDS	GDC	32-414N	117-140W	sTUGA03WT

#GMT #TIME	DDMMYY DATE	LOC T TIME Z	SAMP CODE	SAMPLE IDENTIFIER	DISP CODE	LAT.	LONG.	CRUISE LEG-SHIP
*** OCEAN BOTTOM SEISMOMETERS ***								
2200	031287		SBOB C	OCEAN BOTTOM #6M	IGP	2-315N	95-316W	sTUGA03WT
1013	051287		SBOB E	SEISMOMETER "JUAN"	IGP	2-317N	95-320W	sTUGA03WT
2200	031287		SBOB C	OCEAN BOTTOM #7M	IGP	2-310N	95-299W	sTUGA03WT
1304	051287		SBOB E	SEISMOMETER "LYNN"	IGP	2-307N	95-291W	sTUGA03WT
2200	031287		SBOB C	OCEAN BOTTOM #4M	IGP	2-331N	95-299W	sTUGA03WT
1544	051287		SBOB E	SEISMOMETER "PHRED"	IGP	2-332N	95-296W	sTUGA03WT
2200	031287		SBOB C	OCEAN BOTTOM #5M	IGP	2-323N	95-271W	sTUGA03WT
1750	051287		SBOB E	SEISMOMETER "JUDY"	IGP	2-325N	95-271W	sTUGA03WT
2200	031287		SBOB C	OCEAN BOTTOM #2M	IGP	2-352N	95-315W	sTUGA03WT
1957	051287		SBOB E	SEISMOMETER "JANICE"	IGP	2-354N	95-313W	sTUGA03WT
2200	031287		SBOB C	OCEAN BOTTOM #3M	IGP	2-353N	95-256W	sTUGA03WT
252	051287		SBOB E	SEISMOMETER "KAREN"	IGP	2-353N	95-262W	sTUGA03WT
2200	031287		SBOB X	SUZY #1M	IGP	2-374N	95-298W	sTUGA03WT
*** SEISMIC BOUY OCEAN FLOOR HYDROPHONE ***								
2200	031287		SBOH C	SEAFLOOR HYDROPHONE	IGP	2-381N	95-270W	sTUGA03WT
0312	061287		SBOH E	SEISMIC BOUY	IGP	2-385N	95-268W	sTUGA03WT

#GMT	DDMMYY	LOC T	SAMP	SAMPLE	DISP				CRUISE
#TIME	DATE	TIME Z	CODE	IDENTIFIER	CODE	LAT.	LONG.	LEG-SHIP	
***** EXPENDABLE BATHYTHERMOGRAPHS *****									
0600	041287		BTXP	xbt 0001 Probe T-4	GDC	0-088N	90-560W	FTUGA03WT	
1201	041287		BTXP	xbt 0002 Probe T-4	GDC	0-495N	91-565W	FTUGA03WT	
1800	041287		BTXP	xbt 0003 Probe T-4	GDC	1-154N	93-048W	FTUGA03WT	
1811	041287		BTXP	xbt 0004 Probe T-4	GDC	1-163N	93-066W	FTUGA03WT	
2358	041287		BTXP	xbt 0005 Probe T-4	GDC	1-488N	94-077W	FTUGA03WT	
0601	051287		BTXP	xbt 0006 Probe T-4	GDC	2-215N	95-138W	FTUGA03WT	
1808	051287		BTXP	xbt 0007 Probe T-4	GDC	2-325N	95-275W	FTUGA03WT	
0546	061287		BTXP	xbt 0008 Probe T-4	GDC	2-374N	95-297W	FTUGA03WT	
2213	061287		BTXP	xbt 0009 Probe T-4	GDC	2-183N	95-403W	FTUGA03WT	
1442	071287		BTXP	xbt 0010 Probe T-4	GDC	3-070N	95-085W	FTUGA03WT	
0303	081287		BTXP	xbt 0011 Probe T-4	GDC	2-376N	95-293W	FTUGA03WT	
1206	081287		BTXP	xbt 0012 Probe T-4	GDC	3-304N	96-093W	FTUGA03WT	
1758	081287		BTXP	xbt 0013 Probe T-4	GDC	4-273N	96-513W	FTUGA03WT	
2359	081287		BTXP	xbt 0014 Probe T-4	GDC	5-219N	97-334W	FTUGA03WT	
138	091287		BTXP	xbt 0016 Probe T-4	GDC	7-264N	99-101W	FTUGA03WT	
1834	091287		BTXP	xbt 0017 Probe T-4	GDC	8-290N	99-575W	FTUGA03WT	
2357	091287		BTXP	xbt 0018 Probe T-4	GDC	9-238N	100-391W	FTUGA03WT	
0558	101287		BTXP	xbt 0019 Probe T-4	GDC	10-239N	101-300W	FTUGA03WT	
1246	101287		BTXP	xbt 0020 Probe T-4	GDC	11-339N	102-194W	FTUGA03WT	
1802	101287		BTXP	xbt 0021 Probe T-4	GDC	12-286N	103-011W	FTUGA03WT	
0001	111287		BTXP	xbt 0022 Probe T-4	GDC	13-223N	103-433W	FTUGA03WT	
0600	111287		BTXP	xbt 0023 Probe T-4	GDC	14-152N	104-259W	FTUGA03WT	
1758	111287		BTXP	xbt 0024 Probe T-4	GDC	15-590N	105-492W	FTUGA03WT	
1808	111287		BTXP	xbt 0025 Probe T-4	GDC	16-002N	105-501W	FTUGA03WT	
0000	121287		BTXP	xbt 0026 Probe T-4	GDC	16-593N	106-331W	FTUGA03WT	
0602	121287		BTXP	xbt 0027 Probe T-4	GDC	17-590N	107-211W	FTUGA03WT	
1205	121287		BTXP	xbt 0028 Probe T-4	GDC	18-587N	108-078W	FTUGA03WT	
1800	121287		BTXP	xbt 0029 Probe T-4	GDC	19-584N	108-572W	FTUGA03WT	
0002	131287		BTXP	xbt 0030 Probe T-4	GDC	20-559N	109-450W	FTUGA03WT	
1830	131287		BTXP	xbt 0031 Probe T-4	GDC	23-599N	112-108W	FTUGA03WT	
1839	131287		BTXP	xbt 0032 Probe T-4	GDC	24-015N	112-121W	FTUGA03WT	
0302	141287		BTXP	xbt 0033 Probe T-4	GDC	25-136N	113-118W	FTUGA03WT	
1917	141287		BTXP	xbt 0034 Probe T-4	GDC	27-299N	115-056W	FTUGA03WT	
0416	151287		BTXP	xbt 0035 Probe T-4	GDC	29-119N	115-357W	FTUGA03WT	
1626	151287		BTXP	xbt 0036 Probe T-4	GDC	31-248N	116-463W	FTUGA03WT	

END SAMPLE INDEX ***