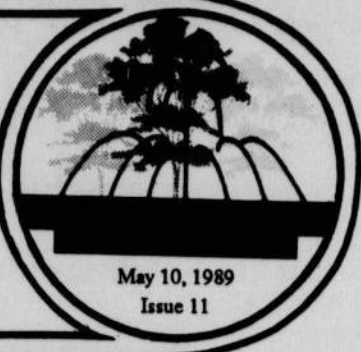


Revellations

A Revelle College Publication - University of California, San Diego



Committee Examines Humanities Bias

By Mary Ann Nogaki

Following an extensive investigation into charges of racial and sexual bias in the Revelle Humanities program, the Revelle Curriculum Review Committee concluded that a bias in the form of an active avoidance does not exist. However, the committee did recommend that the program increase its coverage of minority and women writers and issues.

The inquiry, prompted by two students who approached the board with charges of gender bias, examined the Humanities curriculum and its traditional focus on the development of Western Civilization. The committee also considered the inclusion of two Women's Studies classes as a potential option in satisfying the social science requirement.

In defining the content of the Humanities program, the professors who spoke to the committee explained that either a western concentration or a global perspective should be presented. The current emphasis of the Humanities program traces western civilization from its primary roots, stemming from Ancient Israel, through Greece, to Rome, and finally through Europe, excluding non-western ideas. Contrarily, a global perspective would obviously strive to include non-western culture, recognizing that such ideas have had an influence on modern culture. The committee also emphasized that some professors have already expanded the predominantly western curriculum, as they are given some leeway within any given humanities course.

In order to formulate recommendations to the Department, the committee heard the views of three Humanities professors and one Women's Studies professor. Dr. Jonathan Saville of the Theatre Department spoke in favor of the global perspective. In fact, as an experi-

ment, he plans to incorporate Buddhism and Hinduism in his Humanities 1 course for Winter quarter, 1990. He pointed out he has tried previously to include a female writer but because of practical considerations did not. In one case the literary piece was too lengthy, and in another the poetry was considered too difficult, considering the time limitations in the program.

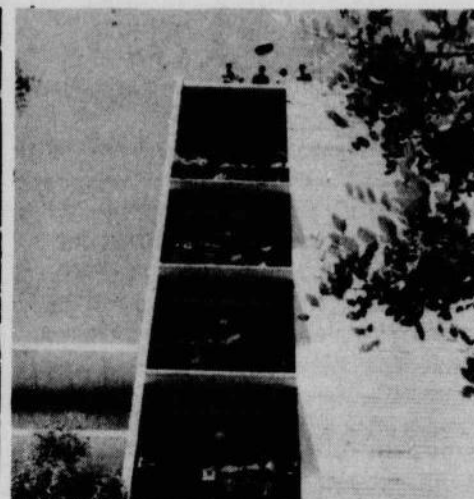
Dr. Stephen Cox of the Literature Department told the committee that it was important to maintain the focus on western culture. "Our program studies important ideas not because they are Greek ideas, or Hebrew ideas, or male ideas, but because they are relevant to the formation of contemporary values." He pointed out that in Humanities 1 and 2 it is difficult to include works by women and minorities due to the period of history covered. In Humanities 4, he has incorporated women writers because of their involvement in abolitionist reforms and the women's movement.

Dr. Chris Norris, Professor of Literature and member of the Women's Studies Program, explained that the Humanities traces the development of ideas, as opposed to the history of people. However, she also stated that she would like to see increased coverage of women and minorities within the Humanities. Dr. Norris suggested that more women and minorities should be encouraged to lecture, with guest lectures as one way to provide breadth without overloading the professor.

Nearly all the speakers pointed out that any professor who teaches Humanities takes on an enormous task, because the field is an interdisciplinary one. Often because of the large time frame covered, professors must lecture outside their area of expertise in order to instruct on a given period of history.

This quarter, Dr. Kathryn Shevelow,

Please see *Bias*, page 2.



Watermelon Tradition Continues *Queens Sought for Pageant*

By Aimee Nielsen

Imagine hundreds of people gathered around Urey Hall, filling the floors of Mayer Hall and the adjacent balconies, and you standing on the seventh floor of Urey Hall holding...a watermelon? Is this some sort of bizarre dream? No, it is the annual Watermelon Drop, one of the most celebrated events at Revelle College.

This Revelle tradition began in 1965 with the first undergraduate class at UCSD, when physics professor Bob Swanson asked on his final exam what the velocity on impact would be of a watermelon dropped from the seventh floor of Urey Hall. After the exam, an actual watermelon drop was held, and physics student Elizabeth Heller became the first "Watermelon Queen," with the honor of throwing the watermelon off the balcony. The splatter was measured to a diameter of ninety-one feet, and the terminal velocity was determined as 112 miles per hour.

Since then, the Watermelon Drop has grown into a full-fledged pageant in which students, regardless of gender, are encouraged to come up with the most original and comical ideas to become "Queen" of the Watermelon Drop. Revelle College Dean Ernie Mort cherishes the memories of some of the older pageants, but one of his favorites was in 1984, won by a group that called them-

selves The Implanted Seeds. "It had a real theme to it, and was well choreographed," said Mort, who went on to mention that it was a "high point" in the tradition of the Watermelon Drop.

Assistant Dean Yolanda Garcia recalls the pageant of 1978, when the first group of men were chosen to drop the watermelon from Urey Hall. The Clone Brothers, as they were called, "were tied to each other and moved the same and talked the same," said Yolanda. "It was really funny."

Contestants for queen and court are judged on originality, humor, spontaneity, and audience response. The application itself asks the probing question "How seedy are you?" Indeed, it encourages the students to be as creative and as "fruity" as possible. Carlos Lin, member of the queen's court two years ago, remembers the experience as being "incredibly fun. It was all we talked about for weeks." He remembers performing in front of Urey Hall and feeling like a "hero for a little bit." For future applicants, he suggests "be original, be creative, don't hold anything back, have lots of fun and start early."

Meet the Prof

This quarter, in recognition of the need to increase student-faculty interaction, the Council of Provosts has initiated a trial "Meet the Prof" session to be held on Fridays from 1:00 to 3:00 p.m. in lounge #10 of the Price Center.

The departments scheduled for the remainder of quarter are:

May 12 Literature
May 19 Psychology
May 26 Biology

Students in these majors, or even considering them, are encouraged to come and talk with faculty about the major, what it involves, and where it leads. Students have expressed a desire to have increased contact with faculty, and these sessions will test how strong that desire is. Other departments will be covered next year. Not surprisingly, Revelle will host the biology meeting, though Provost Bond will attend all but the May 19 meeting. Students with a desire for increased faculty contact but who are unable to make these sessions should feel free to make an appointment with Dr. Bond to discuss any ideas they have.

In Brief

Interested in being a model? NPB is having a spring fashion show on Friday, May 19th and wants student models to participate! Show off to your friends, be the first to try on the newest summer fashions, and have a lot of fun!! If you are interested, or just want more information, contact Diana at 558-2485 or Julia at 558-8911.

The Revelle Leadership Banquet will be held on Tuesday, May 16, from 6 to 8 p.m. in the Price Center Ballroom. Invitations have been mailed, and invitees are asked to RSVP by May 9 to 534-3493, between 8 a.m. and 4:30 p.m.

The Revelle Resident Dean's Office is sponsoring a trip to the San Diego Zoo on Saturday, May 20. Carpools will leave at 10:30 a.m., and more drivers are needed. Interested students should sign up in the Revelle Resident Dean's Office. Tickets are \$4.50 per person, and the trip is limited to the first 40 people who sign up.

Free Symposium on

"What's New in Psychiatry"

The UCSD Department of Psychiatry is sponsoring a free symposium to update the community on important advances in psychiatry. The event will be held from 6:30 to 8:30 p.m. on Wednesday, May 17, in Liebow Auditorium on the second floor of the Basic Science Building, UCSD School of Medicine.

Speakers for the "What's New in Psychiatry" symposium are Marc A. Schuckit, M.D., discussing how recreational use of street drugs can cause users to appear schizophrenic or manic-depressive, a little-known side effect of drugs of abuse; Renee Dupont, Ph.D., on how high-tech methods of brain imaging are revealing the physical side of mental disorders; Sidney Zisook, M.D., on who is at highest risk for developing severe depressive illness after loss of a spouse

and why; and Michael Irwin, M.D., on the mind-body connection, or how stress affects the immune system.

Refreshments will be served, and parking is free. For further information, contact the Health Science Communications office at 534-1505.

The UCSD symposium is presented in conjunction with the "Moods & Music" concert, a benefit performance by the San Diego Chamber Orchestra featuring music of manic-depressive composers Schumann, Wolf, Handel, Mahler, and Berlioz. Concert proceeds will benefit three non-profit mental health agencies: the San Diego chapter of the National Depressive and Manic-Depressive Association, the San Diego Alliance for the Mentally Ill, and the San Diego Mental Health Association.

Commentary

Reflections on Four Years at UCSD

By Sean Hayes

After spending the last four years here at UCSD, the innocence through which I first viewed this school has been shattered by the truth of the situation. Reality does that to a person. This is not to say that UCSD is a bad school. On the contrary, we're led to believe that the University is actually quite good. But I suppose it all depends upon who you talk to. Consider the following:

1.) For four years, I was constantly told that UCSD was the pre-med capital of all U.S. public schools. Imagine my shock during my medical school interviews when, time after time, my interviewers regarded UCSD as we regard SDSU. One even said, "It's a good thing you did well on your MCAT's, since otherwise we would have no way of evaluating you against good students."
 2.) As a Bioengineering/ Pre-med major, I take half of my courses from the AMES department and half from the Biology department. Every medical school I know of requires at least one biology laboratory course in the applicant's undergraduate curriculum. So what happens every time I sign up for a Bio lab? I'm told to "get lost," since I'm not a declared Biology major. Instead of trying to work out a solution, they tell me to head to the nearest community college. My major even specifies that I am pre-med in its title--Ha! Isn't

that funny!
 3.) Does this school have any school spirit? Any at all? Enough said.

4.) It seems that, every year, the A.S. elections are a joke. A candidate cheats, or registered students are not allowed to vote, there are re-counts, and the elections are invalidated. For the first time all year, A.S. President Maynard Dimmesdale made an intelligent statement when he said that the election process is "A real mess." He was elected, wasn't he?

5.) One thing I have hated is that every quarter, I have to walk over to the Provost's Office to get approval for 20+ units. That's O.K., though, since walking isn't going to kill me. What really irks me, though, is that now, with T-Reg, you have to wait until after classes start before you can even ask permission to take over 20 units. Thus, you are left with a guessing game, trying to decide which class to leave off your preferred enrollment list. And if you guess wrong, and that class fills up, it's just your tough luck. Two years ago, I was torn between an Economics and a Psychology minor. That quarter, I was planning on taking Psych 60, but since the lecture was in Peterson Hall, with 400+ seating capacity, I figured I could add the class later. Not only did it fill up, but there were 87 people ahead of me on the waiting list.

(This brings up another problem-- shortage of large classrooms, along with shortage of lab courses and space!) Thus, I was pushed into an Economics minor by forces outside my control. It was a rather rude shock that UCSD would punish its better students in this way. Really, if the Provost's Office could tell the Registrar's Office that so-and-so is eligible to do what they want, as long as their GPA stays over a certain level (3.0 sounds reasonable), then we wouldn't have this problem.

6.) Though I may not think the quality of teaching was all that outstanding, I still think I got about as good an education as anywhere else. The books are there--it's up to the student to study them. Actually, if you get bogged down with a poor lecturer, it's really immaterial; you can go to the textbook, OASIS, classmates, the TA's, or even other professors. I know that this is predominantly a research institution, but even though you may have to make an appointment, many professors will be happy to sit down with you and explain whatever it is you want to know. Sadly, some won't; just get help from the next one.

UCSD has the potential to be a great school, but I don't think it's quite there yet; although the administration keeps telling us otherwise.

Bias Continued from page 1.

Director of the Women's Studies program, spoke to the committee about the feasibility of adding two Women's Studies courses to the social science requirement. She emphasized that the courses, currently listed under Cultural Traditions, offer breadth by covering such fields as anthropology, social science, economics and political science with gender as the focal point.

In response to the original question of bias against women and minorities in the Humanities program, other Humanities professors reflected the views of those who had spoken before the committee. Dr. Avrum Stoll of the Philosophy Department stated, "I do not believe there is any bias against women and minorities in the Revelle humanities program; the program uses classifiable materials, some of which, of course, are devoted to women's issues in a variety of different ways. Such things as *Madame Bovary*, for example, or the role of Penelope, in Homer's *Odyssey*, and so on."

Professor Stoll believes that the focus on Western Civilization is a sensible idea and said "It's a mistake to water-down these programs in order to accommodate other kinds of interests... For example, those that might talk more about minorities and so on...it seems to me it's better to have parallel programs rather than, say, to water down what is a very classical and solid program."

In their draft report, the committee concluded that any unintentional omission of literary works by women or minority writers does not constitute a bias in the program. Because women and minorities were primarily excluded from past societies, few great or classic works were written by them. In explanation of the historical rationale, the committee determined that there are "certain limitations inherent in the general subject matter and goals of the program which restrict their discussion."

While the committee has made some preliminary recommendations, it is unlikely that they will be processed until next fall. After the final draft of the report is submitted to Revelle Provost Dr. Thomas Bond, it will be forwarded to the Humanities Committee, the implementing body of the review process. The final draft will then be examined by the Revelle College Executive Committee, which consists of the Provost, four elected faculty, two staff, and two students. Provost Bond does not force the issue moving onto the University's Committee on Educational Policy, unless the Humanities faculty is strongly divided on the subject or students approach the committee.

"The Revelle College Humanities sequence focuses on the 'great books, great thinkers, great events' of the western European tradition from its roots in the ancient civilizations of Greece, Rome, and the Near East to the twentieth century. It is arguable that this tradition itself contains bias against women and racial minorities, but the Humanities Program does not seek to perpetuate that bias. Most instructors in the sequence make these biases explicit and thus expose them to criticism. The Revelle College Curriculum Review Committee may want to consider whether or not the European focus is too narrow, but it should do so for academic reasons and not in response to ill-founded charges that the present sequence promotes racism or sexism."

--Alden A. Mosshammer
 Chair, Revelle College Humanities Committee

Accent on Academics

Dropping a course and the "W" grade:

A student may drop a course before the end of the ninth week of instruction by filing the appropriate form with the Registrar, after first notifying the instructor and/or department.

If you drop a course after the end of the fourth week of instruction but before the end of the ninth week of instruction, the Registrar will assign a final grade of "W" for that course.

After submitting an add/drop card for any reason, always request a class confirmation at the Registrar's Office, and CHECK IMMEDIATELY to verify that the add/drop has been processed correctly.

You may not drop a course after the end of the ninth week of instruction (June 2, 1989).

When considering dropping a course, keep in mind the minimum progress requirement of 36.0 units per academic year.

PLANNING AND SCHEDULING:

The fall '89 Schedule of Classes should be available at the Bookstore or the Revelle Sundry Store on May 5. Purchase a copy so that you can begin planning your fall classes.

TELEPHONE REGISTRATION FOR FALL '89:

May 10 through May 28 are the designated dates for telephone registration (T-REG). Packets will be mailed from the Registrar's Office containing your 72 hour registration time window beginning May 1. Please refer to the Schedule of Classes, your *Unravelling Revelle* or the video tapes in the library or Revelle Provost's Office for T-REG instruction.

ADVISING HOURS:

From Monday May 8 through Friday May 26, academic counselors will be available on a drop-in basis in order to better serve more students. For help with academic planning, come by the Provost's Office, open 8:30am-12:00pm, and 1:00-4:30pm.

GRADUATING SENIORS...now what??

For those of you who haven't decided what to do after college, the Career Services Center has many workshops planned to help you get started. Some topics include: Marketable Resume; Interviewing Skills; On-Camera Practice of Interviewing Skills; and Finding the Hidden Job Market. If these workshops sound interesting to you, go the Career Services Center or call 534-3750 for more information.

GRADUATING SENIORS:

Check the Revelle Plaza kiosk periodically to see if your name is listed on the "graduating seniors" list. If your name has been removed, check with us to see what problem(s) have developed.

FINALS:

Check your Spring 1989 Schedule of Classes (p.13) for a listing of final examinations. If there is a conflict, or if you have three or more finals on the same day, contact each instructor and try to make other arrangements. If you need verification of these problems, contact the Provost's office for assistance.



Relationships

How to Communicate

By Tanya McGraw

Throughout these last two years that I have been writing about relationships, the most common theme that has come up is open communication. However, saying "open communication" and actually having open communication are two entirely different things. It is a lot harder than it sounds, especially if you are afraid that expressing your feelings will make things worse instead of better.

Once, when I was in a Chinese restaurant, I got a fortune that said, "An angry man opens his mouth and shuts up his eyes." How many times has that happened to you? Many people have a problem communicating openly to their partner. One problem that usually occurs is when the person being talked to becomes defensive and won't listen to what you are trying to say. The other problem is when the person talking doesn't know how to express what they are feeling. In this article, I hope to teach you some basic listening and communicating skills to help you along.

How to be a good communicator:

1. Try not to put your partner on the defense. You should know your partner well enough to know what will make them angry. Always approach the situation with care.
2. When explaining what has made you upset, use the "I" term, rather than the "you" term. For example, when you are angry at your partner, rather than saying, "You make me so angry when you..." say, "I feel very upset when..." Phrasing things this way is less accusatory and tends to reduce the feeling of being accused.
3. Try to be very specific when talking about things. Don't be vague, like, "You are always putting me down." Instead say, "I feel very upset when you say that you don't like the way I do my hair." Then continue to question what it is that makes the person say what they do. It may be just a simple mistake or a very minor problem.
4. Always be open minded when listening to the other person's responses. Try to listen to exactly what is being said, and repeat back to them what you think they are trying to say. This eliminates any confusion that may have occurred in translation into your own language.
5. If things just aren't going well, call a time out. Don't try to keep communicating if you feel that you or your partner have shut your minds.

How to listen:

1. Always be open-minded when listening to the other person. If they say something that bothers you, try to understand where they are coming from, and what is causing them to say what they are saying. What the person actually says and what is really bothering them may be two completely different things.
2. Repeat back what the person said to you to make sure you correctly understood what they said. Ask questions when you don't understand something, rather than trying to interpret it in your own language.
3. When you do finally understand what has been bothering the other person, explain to them what you originally thought the problem was, and reassure them that you now understand what they are saying. Your anger from the situation can turn to empathy, and with this new understanding, you can work on correcting the situation.

Remember, when two people are angry, or when one person feels that they are being attacked, it creates a lot of hostile feelings. It is very easy to shut your mind to the situation, but this also makes it very difficult to find some sort of middle ground or a resolution to the problem. Always take a breather when you or your partner feels that the situation is out of hand, and remember not to say things to hurt them just because you are angry. Your goal is to try to work out some sort of resolution, not alienate each other even further. Good luck!

Co-Discoverer of AIDS Virus to Lecture at UCSD

Dr. Luc Montagnier, co-discoverer of the virus that causes AIDS, will give the Dean's Visiting Professor Lecture on "HIV-AIDS Pathogenesis" at 4 p.m. on Tuesday, May 9 in Licbow Auditorium in the Basic Science Building at the UCSD School of Medicine. The lecture will be simulcast to the UCSD Medical Center Auditorium.

Montagnier is a leading viral oncologist whose many important research contributions have facilitated a number of significant advances in virology, including the cloning of the interferon gene.

In 1983, Montagnier and his colleagues announced in *Science* the isolation

By Evan P. Kirvin

Do you know the answers to the following questions?

1. What is your cholesterol level?
2. With what company do you have health insurance?
3. What is the best way to manage stress?
4. What P.E. classes are best for cardiovascular fitness?
5. What is your overall health and fitness level?

If you can not answer any or all of the above questions, but would like to become better informed, then you should attend the free "Total Fitness as a Lifestyle Forum" at 3:00 p.m. on Thursday, May 11 in *Why Not Here?*, sponsored by Revelle's Faculty Student Programming Board.

The philosophy of Revelle College is a liberal education, and our curriculum is designed to produce a well-rounded individual. Unfortunately, we tend to under-emphasize the importance of physical fitness. Our broad-minded philosophy should emphasize a balance of mind and body.

John Cates, presenter of the Fitness Forum, is in his twentieth year of teaching at UCSD. Cates is a supervisor of Physical Education at UCSD, and is the coordinator for all physical conditioning classes (e.g. aerobics, weight training, swim conditioning and basic conditioning). Cates is also a member of the Student Health Advisory Committee and is concerned with helping students to start and maintain good health and fitness programs.

The forum will be structured towards those students who are not actively pursuing athletics at UCSD. Many students at UCSD are so involved with pursuing academics that they have little time for anything else; although their brains are getting a great workout, their bodies are being neglected. Students who want to become more aware of what they can do to improve and maintain their health and fitness will find this forum beneficial.

Some of the topics that John Cates will address are the prevention and care of injury, starting and maintaining an exercise program, the importance of cross-training, stress management, choosing the right personal equipment for different activities, and maintaining good health and nutrition. Cates will be encouraging student questions and interaction.

Also, for interested students, Cates will be conducting a health risk analysis for students after the lecture. This will consist of body composition measurement, posture analysis, flexibility measurement, and muscular strength and endurance analysis.

of a virus which they named lymphadenopathy-associated virus (LAV), and which they reported was the causative agent of acquired immune deficiency syndrome. An almost simultaneous announcement was made by Dr. Robert Gallo that the AIDS virus was one of a family of human T-cell lymphotropic viruses, named HTLV-III by Gallo. The two viruses, now called HIV, were found to be virtually identical.

Montagnier's visit to UCSD is co-sponsored by the UCSD School of Medicine and the World Immunological Network Foundation (WIN) Project Foundation.

UCSD NEWS SERVICE

Revelle Committees	Campus-wide
Revelle Programming Board Erik Councillor Chuck Coggin James Hsu Brad Fields Mona Saint Lara Hustana Nicole Mason Rosalind Young	Revelle Judicial Committee Cyndi Freeland Mitch Gross Erin Hausladen Evan Kirvin Kristine Clarke Elsie Chiang Ryland Madison Sunny Lee Mitzi Hill Bob DeCarli Carol Chikasawa Diana Langdon
Faculty Student Programming Board Jennifer Tracy Ashlee Tanimoto Allison Chung Melissa Arce Diana Hguyen Ronald Toyofuko Norman Padre	Revelle Semi-Formal Committee Sunny Lee Tracy Johnson Heather Carlson Vanessa Wallace Melissa Arce Grace Santos Diana Nguyen Tamara Wilcox Sue Hamilton Matt Ayon Adrienne Brown Katherine Roe
Noon Programming Board Dciphinc Lee Katherine Roe Julia Cochrane Jennifer Hamsaych Heather Carlson Steven Yoon	Counseling and Psych Services Advisory Dina Cohen Tracy Johnson Renee Dunne Cinda Christian Lisa Davis Grace Santos
Commuter Advisory Board Tim Cockerham Linda Reynolds Virginia Hire Richard McAndrew Elysia Paladino Cyndi Shadoan Loni Nguyen	College Bowl Committee Raquel Cabrales Jennifer Tracy Elsie Chiang Dina Maramba Sunny Lee
Student Health Advisory Committee David Nielson Allison Chung Christy Hicks Cyndi Shadoan	Community Outreach Raquel Cabrales Rebecca Perez Kim Vesco Kristine Clarke Eva Vadesy Donald Laurer Linda Baquiran Loni Nguyen Dina Maramba Lisa Willet
Revelle Organizational Committee Cyndi Freeland Dina Cohen Renee Herstoff Luis Ramirez Carol Chikasawa Linda Reynolds Virginia Hire Linda Reynolds Lisa Davis David Epstein Holly Foust Rebecca Perez Lara Hustana	Revelle Curriculum Review Board Matt Ayon Les Bruvold Garret Beauvais Ben Osborne Al-Karim Dhanji Lisa Willet Greg Szydiowski Renee Herstoff Mitch Gross Adrienne Brown Erin Hausladen Evan Kirvin Dina Christian
Student Financial Aid Advisory Board Sue Hamilton	Communication and Media Board Eryc Branham
Housing and Food Services Advisory Holly Foust	Bookstore Advisory Al-Karim Dhanji
Parking Advisory Committee Chuck Coggin	University Center Board Nick Long
Registration Fee Committee David Epstein	Alcohol and Substance Abuse Advisory Wendy Coupe
UE&SA Programming Board Stephen Chow	Student Organization Finance Board Linda Lee
A.S. Judicial Board Eva Vadesy	Lobby Annex Vanessa Wallace
Undergraduate Issues Forum Ann Von Holle	Revelle Elections Commissioner Linda Baquiran
Sun God Representative Karen Rotuman	

NPB Briefs

Due to unforeseen circumstances, we haven't had our usual number of events so far this quarter. However, we have a full array of events scheduled for the last half of the quarter which we hope will make up for our slow start. The weather should be nice (we hope!) and it's spring--so we hope everyone will join us on the plaza from 12-1 for the following events:

Wed. May 10--**Fun in the Sun Faire** featuring volleyball, waterballon toss & Win Lose or Draw. There will be a noon concert featuring Seventh Heaven, prizes and plenty of fun!

Fri. May 12--**Noon Concert**

Wed. May 17--**Law School Seminar:** Anyone aspiring to go to law school will benefit from this informative seminar conducted by Bar/Bri professional testing center. Hot tips will be given about the LSAT, the admission process, and more. This talk is especially useful for those seeking to take the LSAT in June or October. Free refreshments!

Fri. May 19--**Spring Fling Fashion Show** featuring student models (if you're interested in modeling it's not too late! Call 534-2519 and ask for Barbara) and fashions from local stores. Free refreshments!

May 24--**UCSD Karate Team Demonstration**

May 26--**Noon Concert**

May 31--**Magic Show**

June 2--**Comedy Hour** featuring local comedians from the Comedy Store & the Improv

June 5--**Bonita Vista High School Music Machine** song and dance ensemble

June 7--**Wild Animal Park Show** featuring animals from the San Diego Wild Animal Park

June 9--Celebrate the last day of classes at the annual Revelle Watermelon Drop and a noon concert featuring the Cardiff Reefers! Free watermelon!

Faculty-Student Interactive Programs Planned

Please note that some of the dates and times have been changed.

Roger Revelle Fireside, at his home Tuesday, May 9 at 8:00 PM Sign-up in the Revelle Commuter Lounge and pick up a map in the Commuter Lounge Intern Office. Space is limited, so please sign up soon. Refreshments will be provided.

John Cates Fitness Forum Thursday, May 11 at 3:00 PM, in WNH? Come find out about how you can get in better shape the easy way!!! Refreshments will be provided.

Humanities Reception, to celebrate the completion of the sequence for the sophomores.

All Revelle students, faculty and staff are invited.

Tuesday, May 23 beginning at 3:30 PM at Stonehenge.

Good food, live entertainment and impressive speakers.

Trip to Sea World for only \$4.00! Friday, June 2

Sign-ups will be in the Revelle Commuter Lounge beginning May 29 Space is limited, so remember to sign-up!!!

Commuter Update

Commuter Study Breaks and Movie Nights: Held on alternate Wednesdays, 5/3 and 5/17. Watch out for posters and Guardian ads for times, places, and the night's menu. Dinners are always a bargain and the movies are the latest hot titles.

Let's Tour San Diego: The Revelle Commuter Advisory Board will be sponsoring a day in and around San Diego on Saturday, June 3. We will caravan throughout America's Finest City, from Del Mar to the Mexican Border. Also, we will be stopping by Dean Ernie Mort's house in Del Mar and Assistant Dean Yolanda Garcia's home in Bonita for desserts and chats. It is an excellent chance for residents and commuters alike to see the town as you've never seen it before. We still need a few more commuters to act as tourguides, so stop by the Commuter Lounge to sign up.

Commuter Breakfasts: Our 50 cent all-you-can-eat breakfasts this quarter are scheduled for the following Wednesdays, from 7:30 to 9:30 a.m.: 4/26, 5/10, 5/24, and 6/7.

Padre Games and Tailgate Parties: Yes folks, we are actually going to see this mighty team that every sportsman is talking about. Our first trip was Monday, May 1, and the next is on Saturday, May 27 (Cap Night). Come see the games, meet new friends, and enjoy the party. Tickets are cheap, food is free, and rides are shared. Sign up in the Commuter Lounge ASAP.

If you would like to attend a meeting of the Commuter Advisory Board and let us hear your comments and suggestions, they are held every Monday at noon in the Commuter Lounge Intern Office. Or, call the Commuter Intern, Armin Afsahi, at 534-2519 or 534-3492.

Battle of the Bands

Friday, May 19
Revelle Caf

Trip to the San Diego Zoo

Saturday, May 20th
Leaving at 10:30 a.m.

We'll be carpooling to the zoo; Please drive if you are able to

Sign up in the Revelle Resident Dean's Office. Tickets are \$4.50 per person, Limited to first 40 people who sign up.

		10 MAY Commuter Breakfast NPB Fun in the Sun Fair	11 John Cates Fitness Forum, 3pm in WNH?	12 Noon Concert Sun God Festival	13 Mother's Day 14
15	16 Revelle Awards Banquet at Price Center	17 NPB Bar/Bri Law School seminar CAB Study Break Dinner and Movie	18	19 NPB Spring Fling Fashion Show RPB Drive-In Movie	20 Trip to S.D. Zoo Revelle Leadership Retreat 21
22	23 Humanities Reception at Stonehenge 3:30-4:30	24 Karate Team Demo on plaza	25	26 NPB noon concert and carne asada sale	27 Commuter Padre Night and Tailgate Party--Free cap night! 28
29 Memorial Day holiday observed	30 Memorial Day	31 NPB Magic Show	1 JUNE Commuter Off-campus Housing Workshop 4 p.m. in Why Not Here?	2 Trip to Sea World	3 CAB presents "Let's Tour San Diego" ICRHA Comedy Night 4
5 Christy's 21st Birthday NPB presents Bonita Vista H.S. Music Machine	6	7 Commuter Breakfast NPB presents San Diego Wild Animal Park Watermelon Queen Pageant	8	9 NPB Watermelon Drop w/ Cardiff Reefers	10 Senior Breakfast 11
12 Finals	13 Finals	14 Finals	15 Finals	16 Finals	17 Finals Sca World Graduation Party Father's Day GRADUATION 18