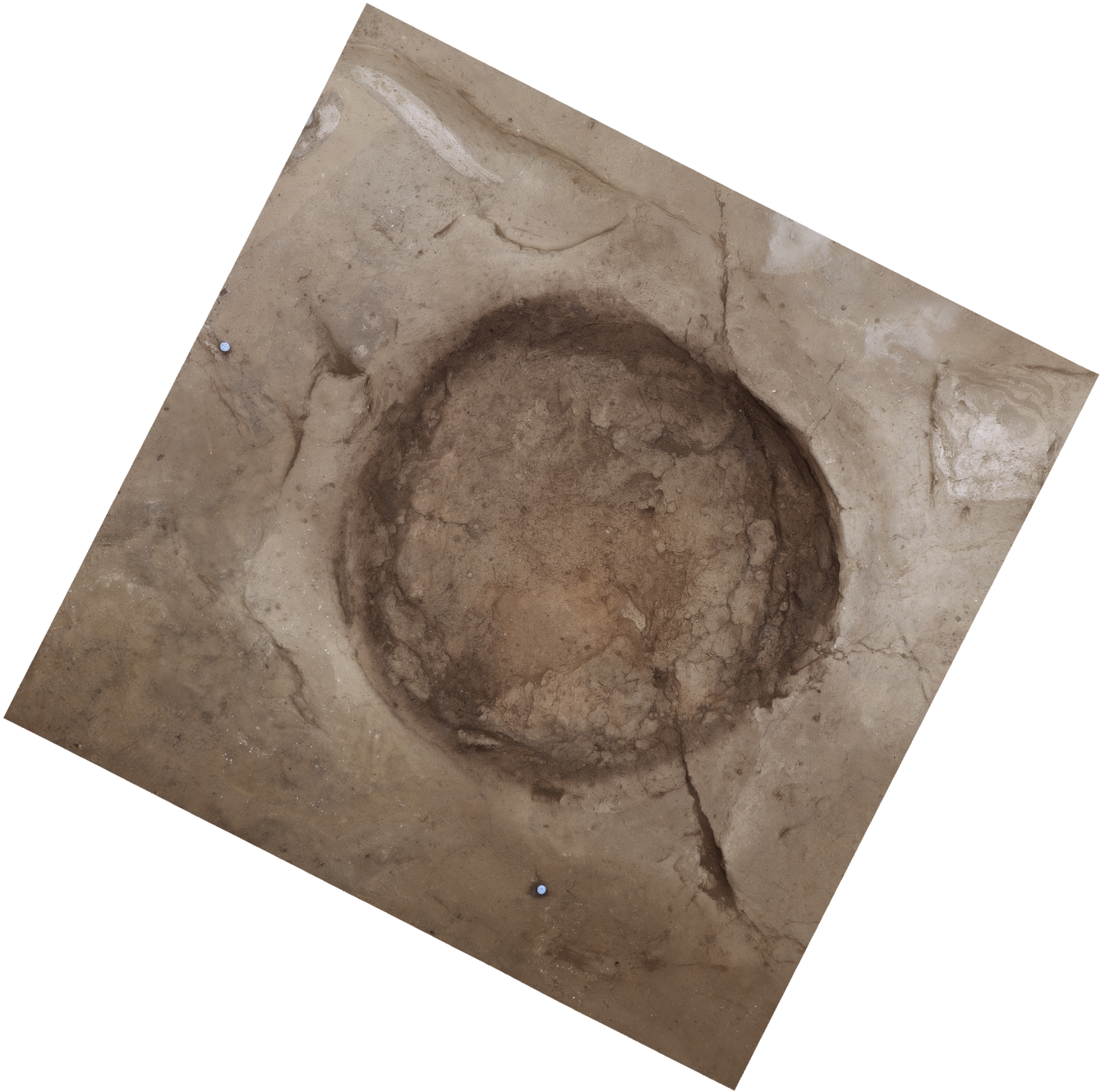


Agisoft PhotoScan

Processing Report
01 November 2014



Survey Data

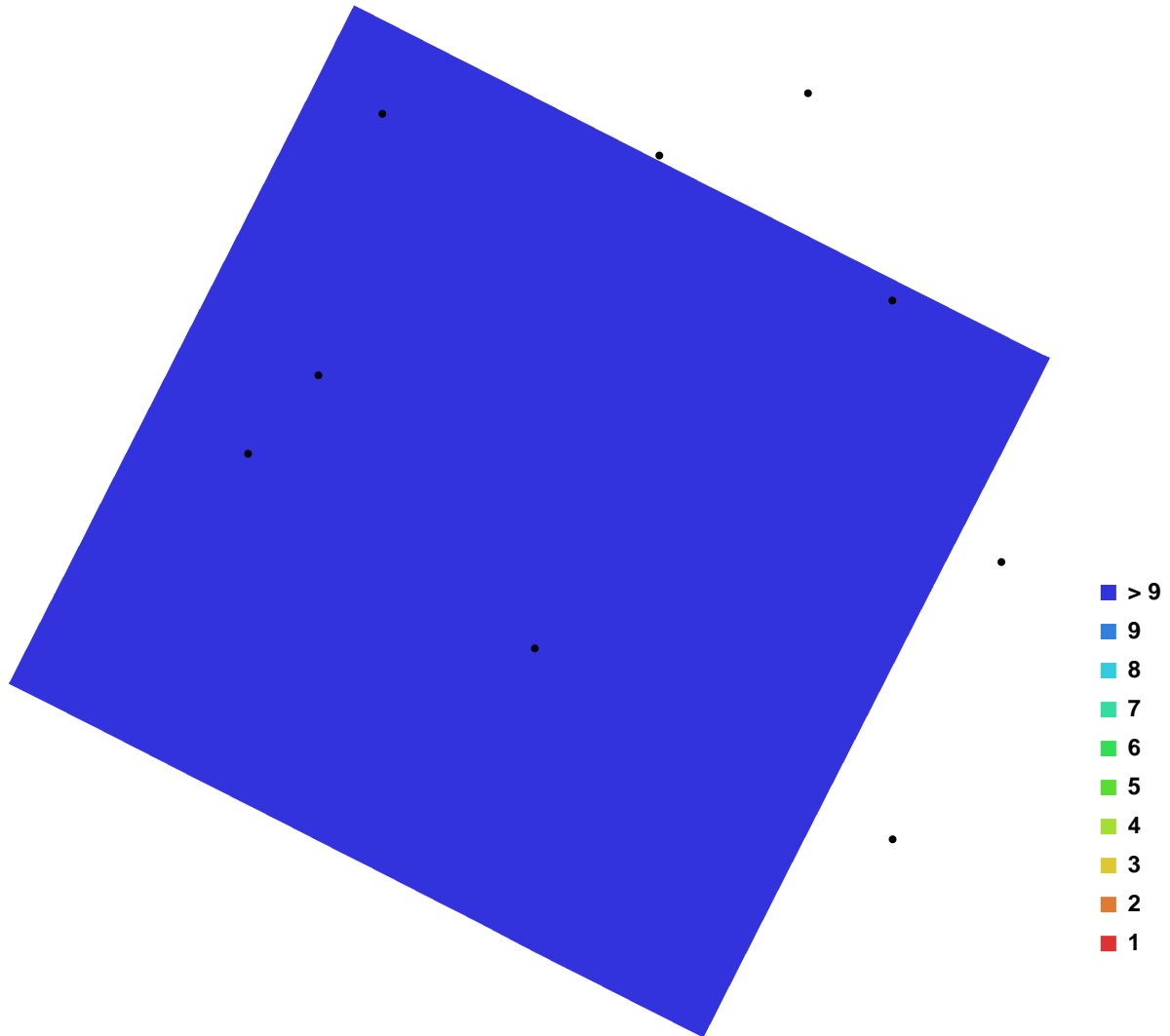


Fig. 1. Camera locations and image overlap.

Number of images:	20	Camera stations:	20
Flying altitude:	1.89521 m	Tie-points:	79167
Ground resolution:	0.000271464 m/pix	Projections:	231218
Coverage area:	1.14593e-006 sq km	Error:	0.769906 pix

Camera Model	Resolution	Focal Length	Pixel Size	Precalibrated
Canon EOS M (25 mm)	5184 x 3456	25 mm	4.384 x 4.384 um	No

Table. 1. Cameras.

Digital Elevation Model

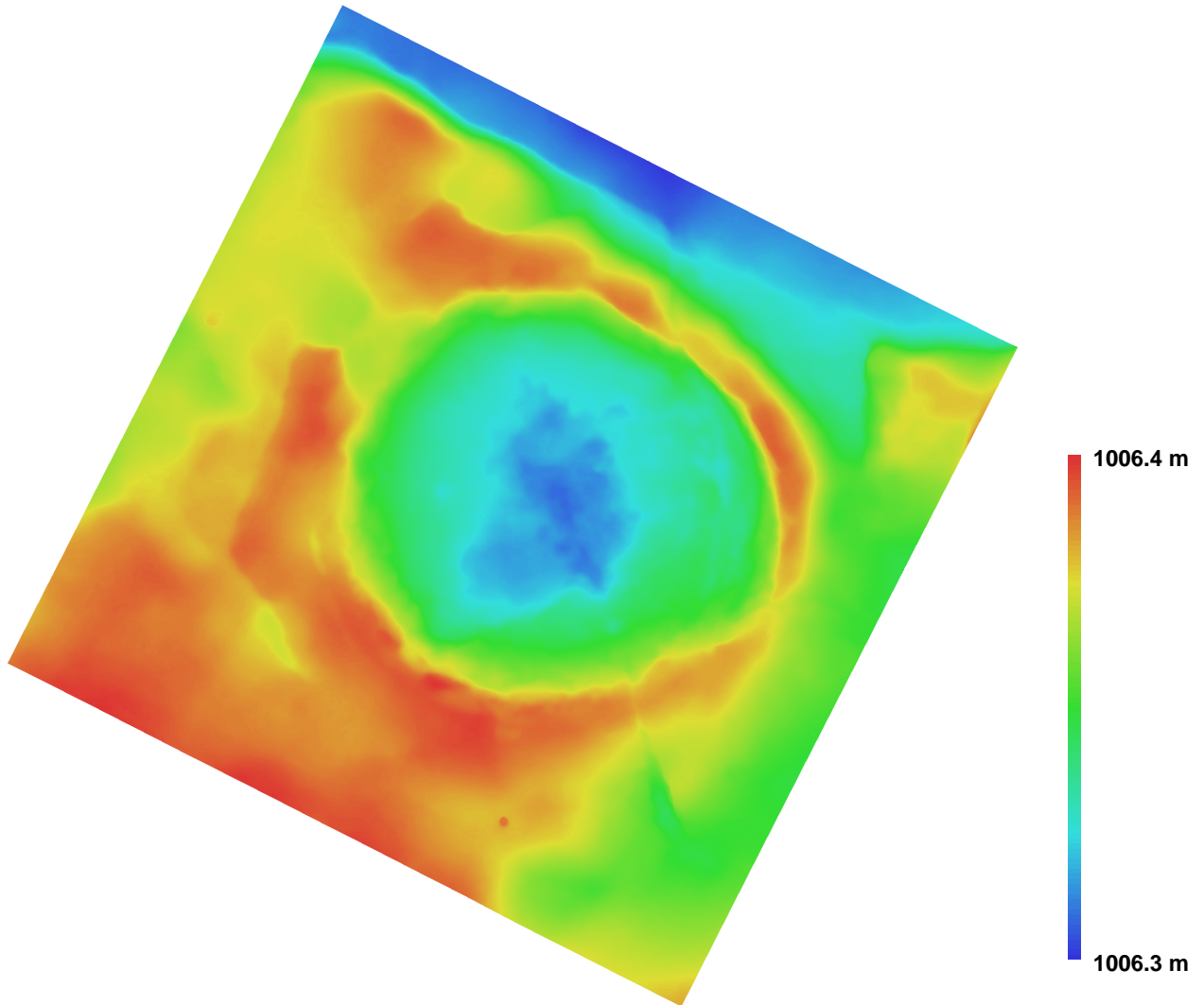


Fig. 2. Reconstructed digital elevation model.

Resolution: 0.00108585 m/pix
Point density: 848119 points per sq m