

***Report and Index of
Underway Marine Geophysical Data***

Cook Expedition

Leg 3

(COOK03MV)

R/V Melville

(Issued December 2000)

Ports:

Arica, Chile (16 October 2000)

to

Papeete, Tahiti (7 November 2000)

Chief Scientist:

Barry Eakins - Scripps Institution of Oceanography
beakins@ucsd.edu

Computer Tech - Ron Moe

Resident Marine Tech - Ron Comer

Post-Cruise processing and report preparation by the
Geological Data Center, Scripps Institution of Oceanography
La Jolla, CA 92093-0223

NOTE: This is an index of underway geophysical data edited and processed after the completion of the cruise leg and is intended primarily for informal use within the institution. This document is not to be reproduced or distributed outside Scripps without prior approval of the chief scientist or the Geological Data Center, Scripps Institution of Oceanography, La Jolla, California 92093-0223.

GDC Cruise ID# 295

**Report and Index of Navigation
and Underway Geophysical Data**

Processed by the Geological Data Center
Scripps Institution of Oceanography

Contents:

Index Chart – gives track of cruise leg, dates, ports, and mileage of each type of data collected.

Track Charts– annotated with dates and hour ticks

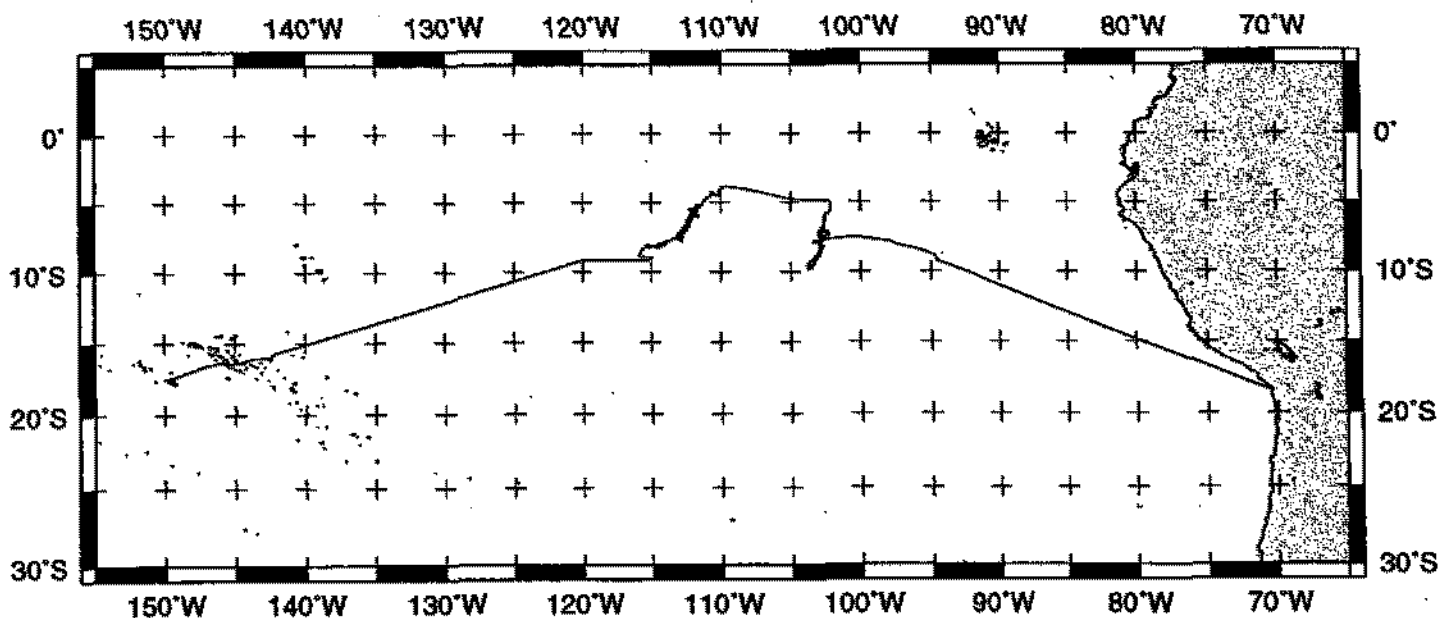
Profiles – depth, magnetic and gravity free air anomaly vs. distance. (Sections of track with seismic reflection data have a wide black line along the bottom of the profile.)

Sample Index – list of begin/end times and positions of all underway records as well as samples and measurements from other disciplines collected on the leg.

NOTE: One or more of the underway data types may not be collected on a given leg. For information on the availability and reproduction costs of data in the following forms, contact the Geological Data Center, Scripps Institution of Oceanography, La Jolla, California 92093-0223. Phone: (858)534-2752, Fax: (858)534-6500, internet email: ualbright@ucsd.edu or gwells@ucsd.edu

1. Files via ftp or on 8mm (Exabyte) magnetic tape or CDrom:
 - a) Separate time series ASCII files of navigation, single beam depth, gravity and magnetics.
 - b) Above data in a single merged ASCII file in the MGD77 Exchange Format.
 - c) SeaBeam depth data (binary, Sun byte order)
 - d) SeaBeam Sidescan data.
2. Microfilm (35mm flowfilm) or hard copies of:
 - a) Underway watch log
 - b) SeaBeam vertical beam profile/Sidescan records.
 - c) 3.5 kHz and 12 kHz echosounder records.
 - d) Seismic reflection profiler records.
3. Navigation abstract listing with times and positions of major course and speed changes.
4. Custom plots in Mercator projection:
 - a) Track plots.
 - b) SeaBeam depth contour plots.
 - c) Depths, magnetic or gravity values printed or profiled along track.

Rev 6/2000



COOK EXPEDITION LEG 3 (COOK03MV)

CHIEF SCIENTIST: Barry Eakins, Scripps Institution

PORTS: Arica, Chile - Papeete, Tahiti

DATES: 16 October - 7 November 2000

SHIP: R/V Melville

TOTAL MILEAGE OF UNDERWAY DATA COLLECTED

Cruise-6564 miles

Magnetics-5410 miles

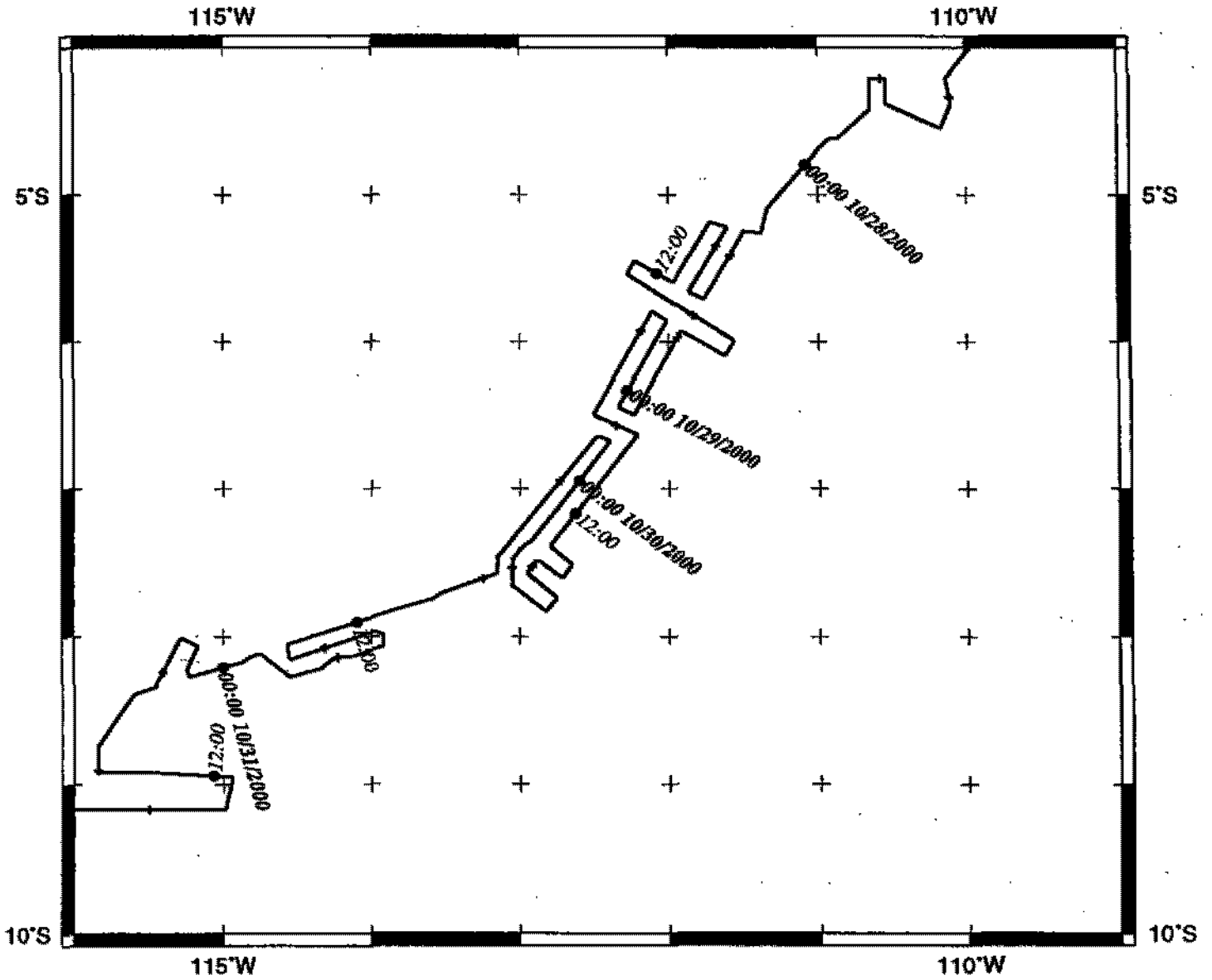
Bathymetry-6262 miles

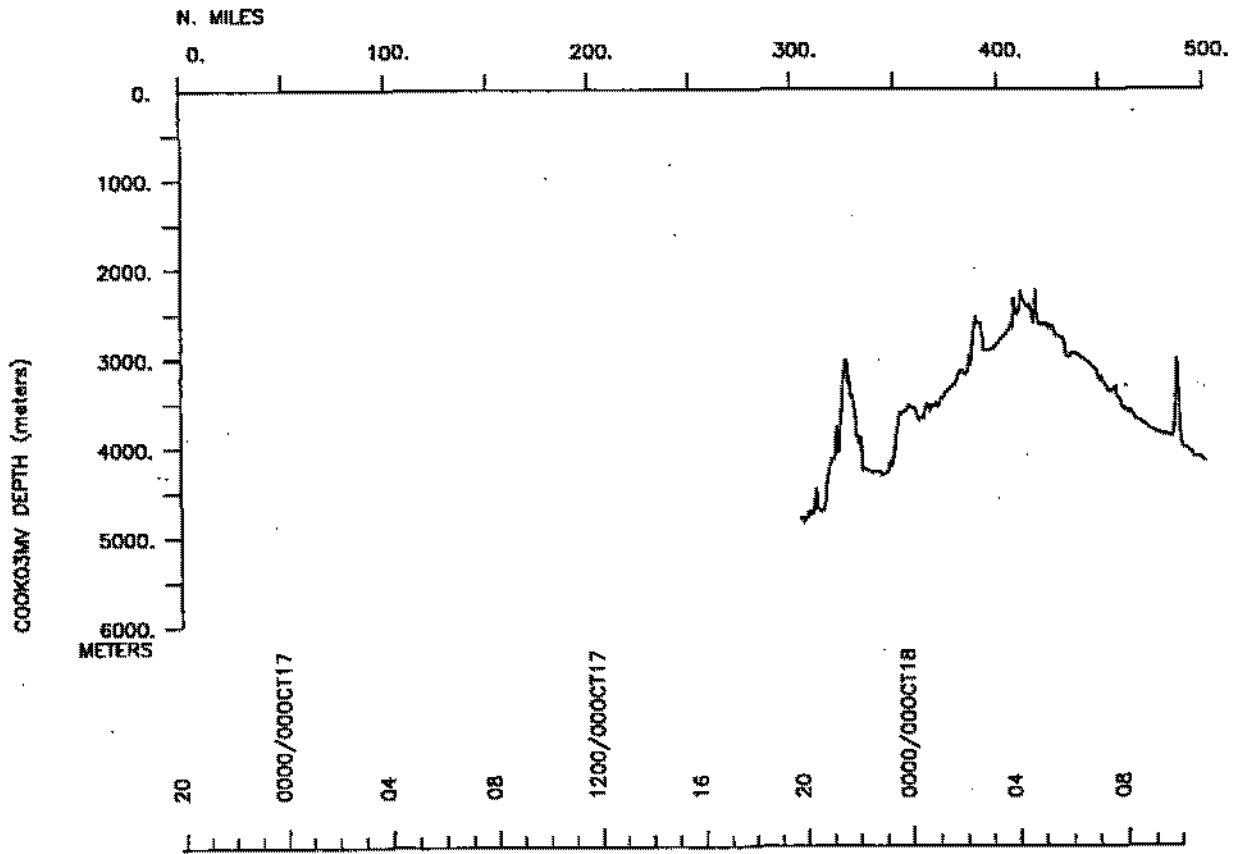
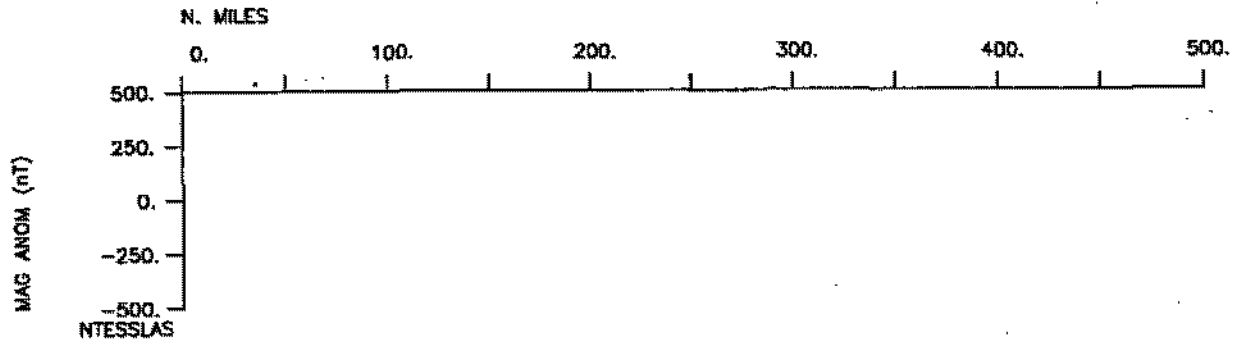
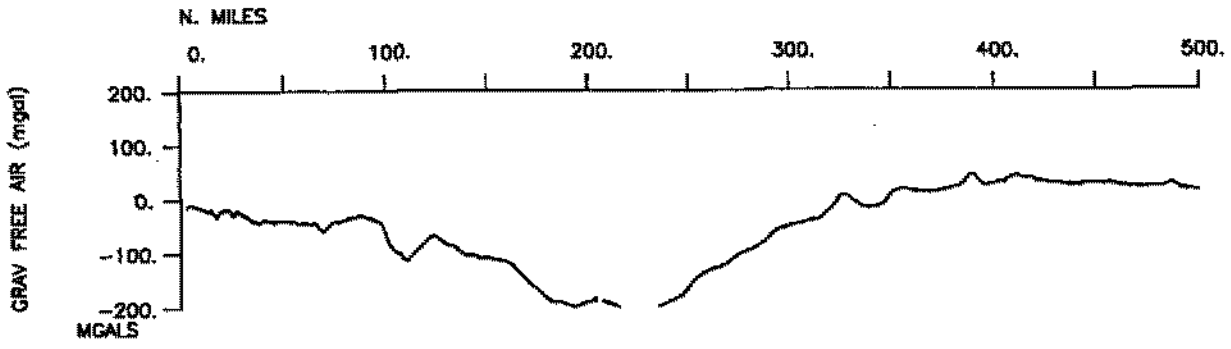
Seismic Reflection-none collected

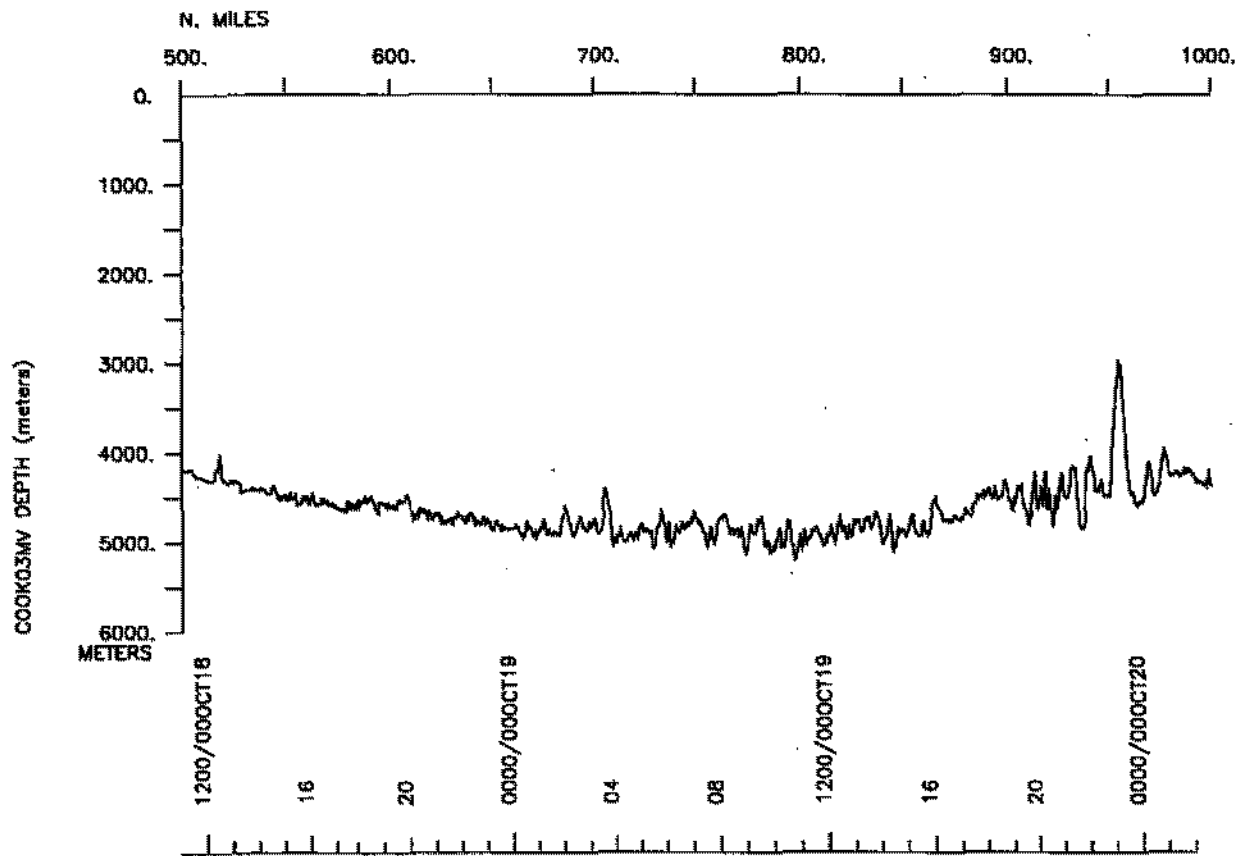
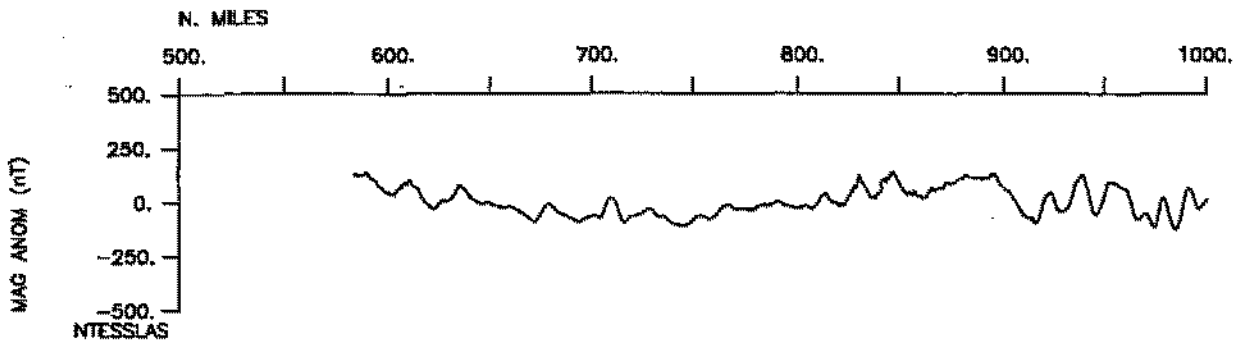
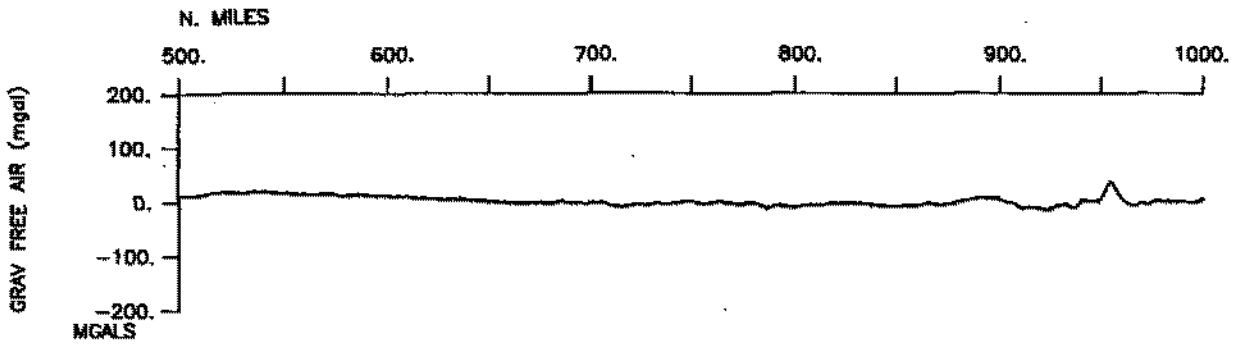
Sea Beam-6262 miles

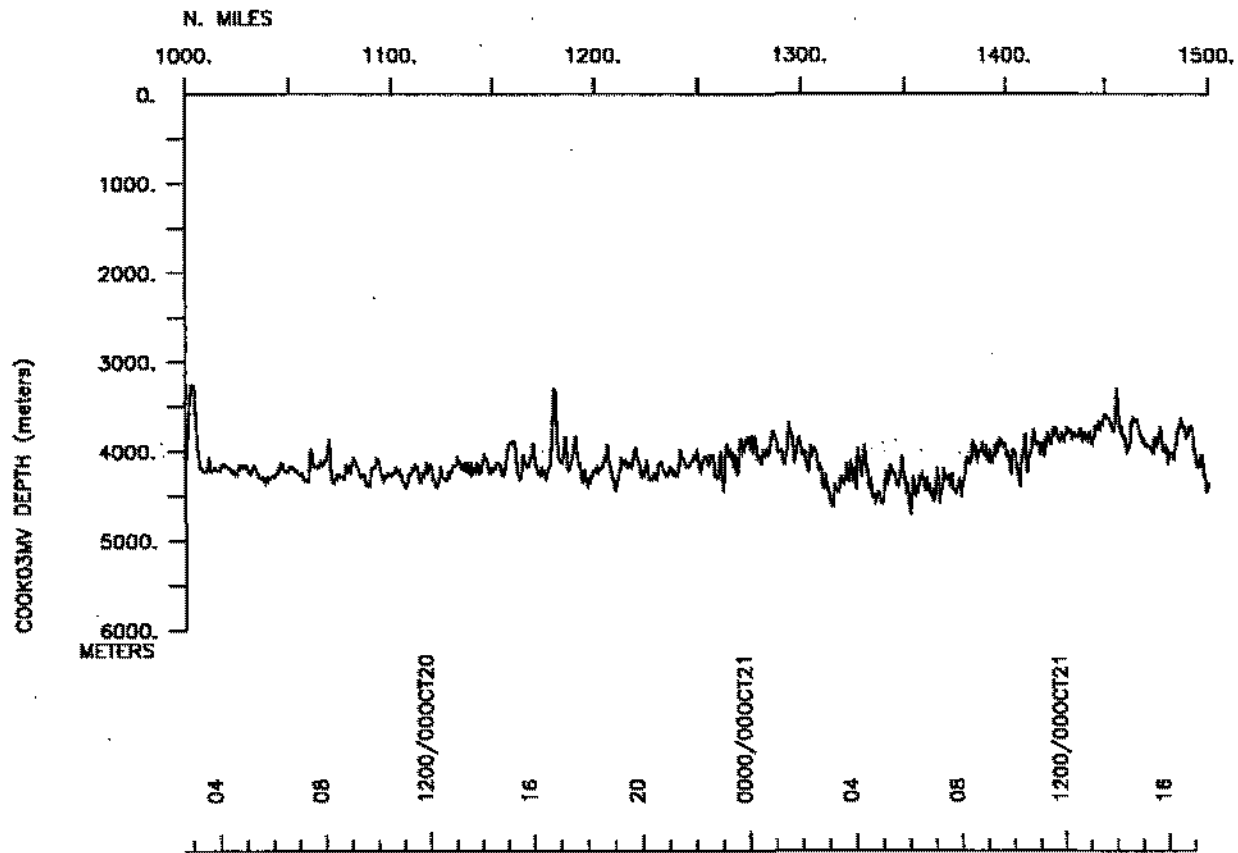
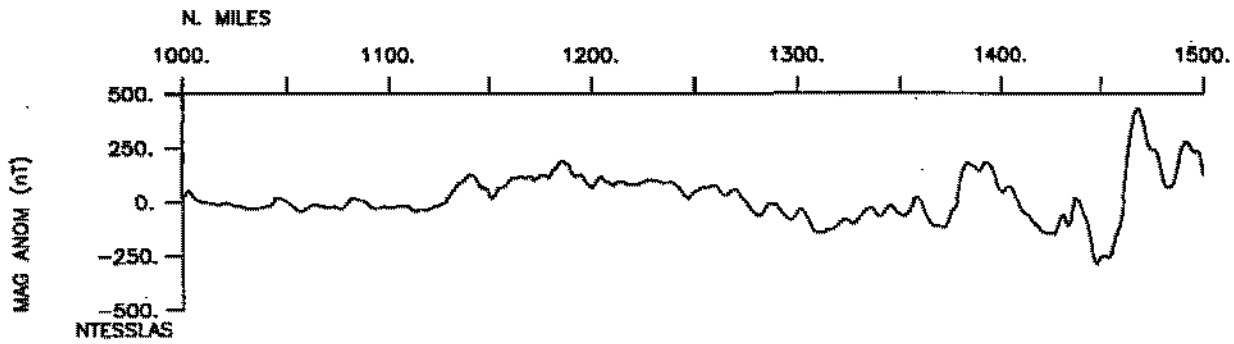
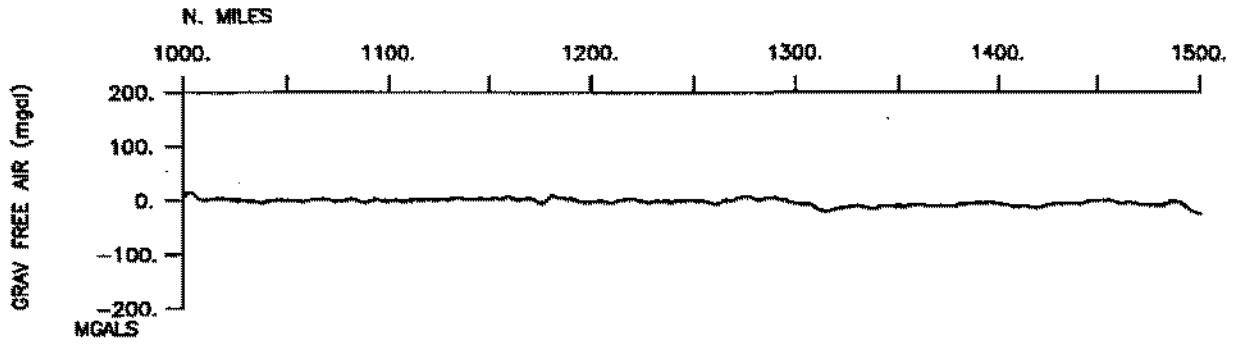
Gravity-6524 miles

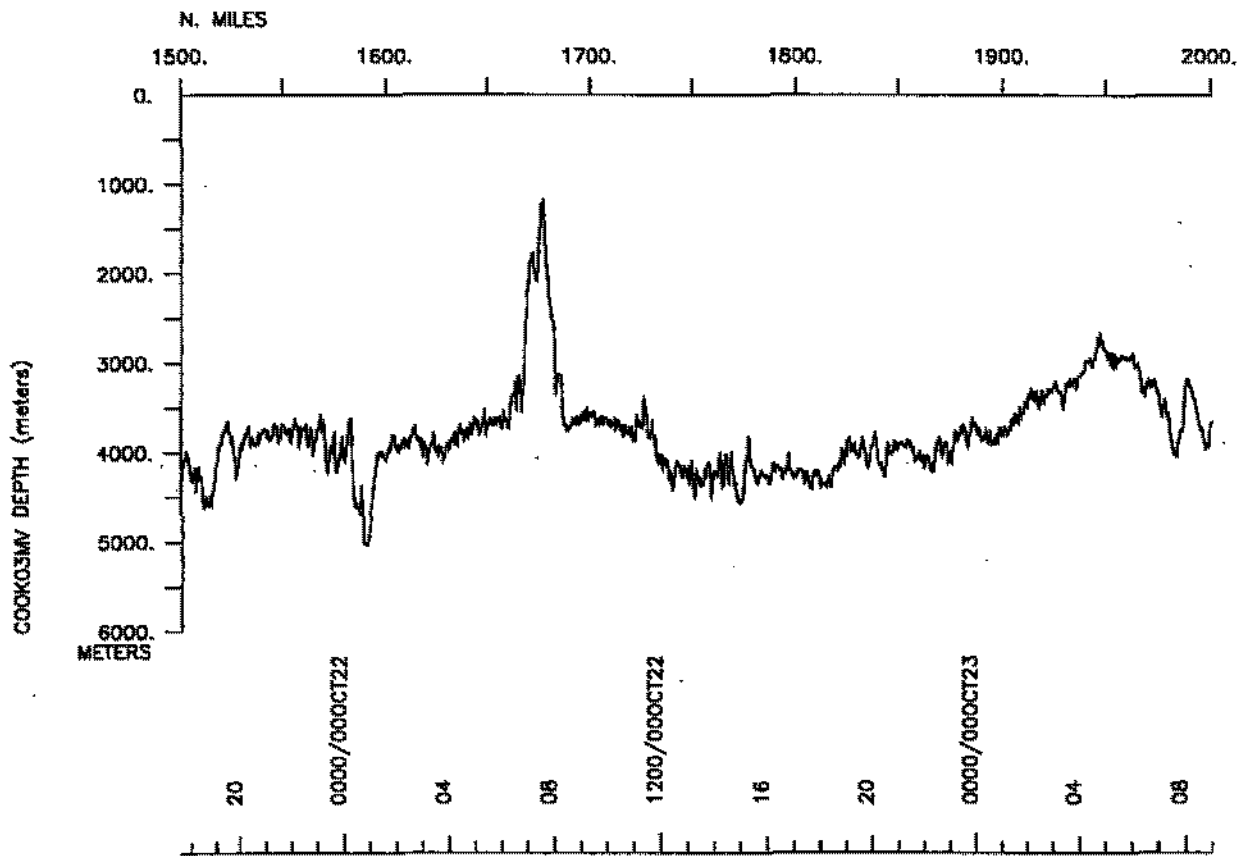
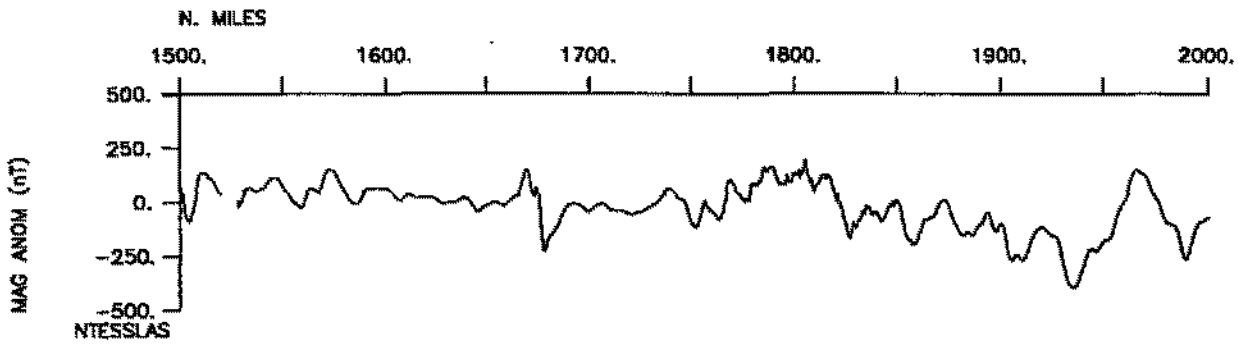
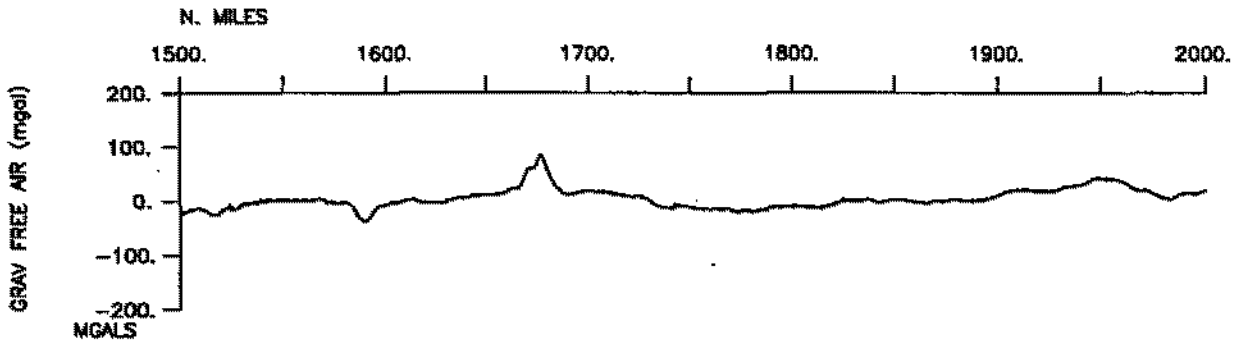
COOK03MV west survey track

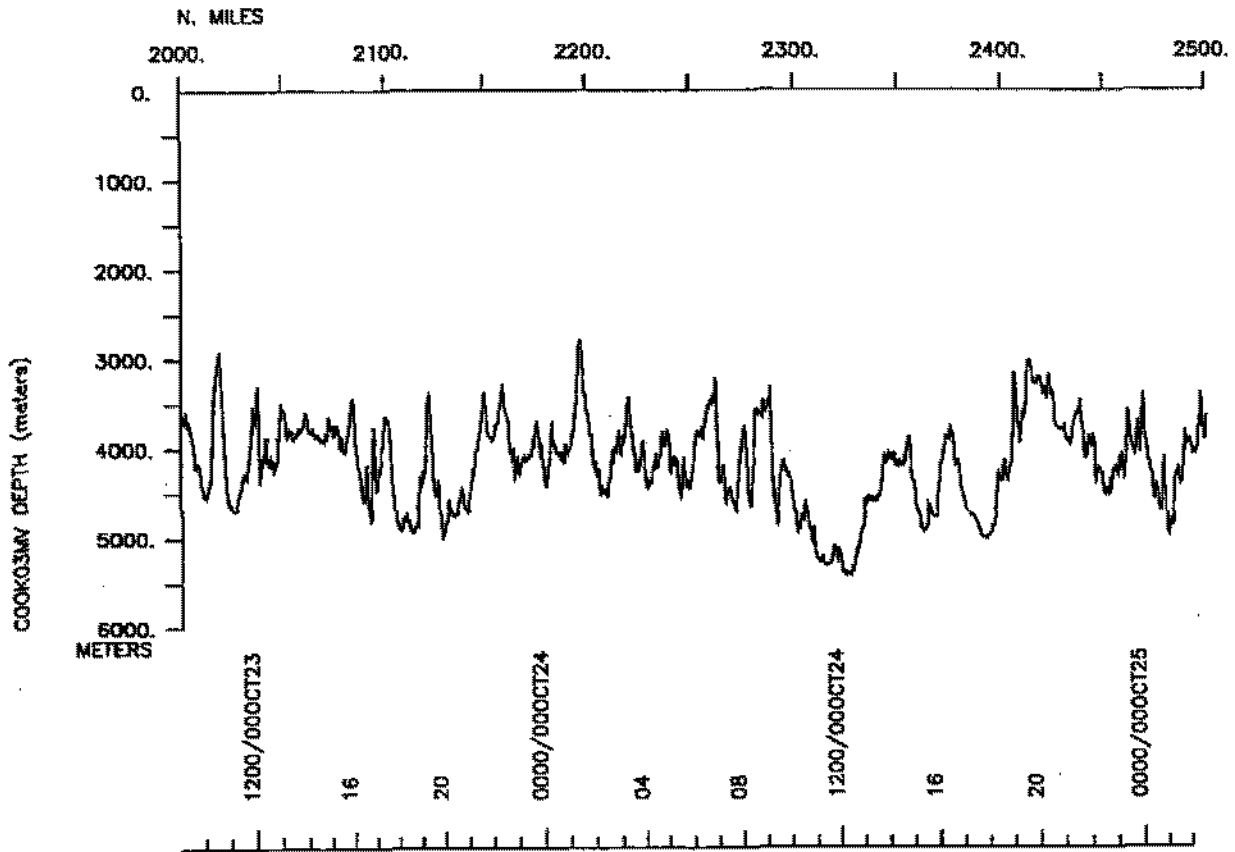
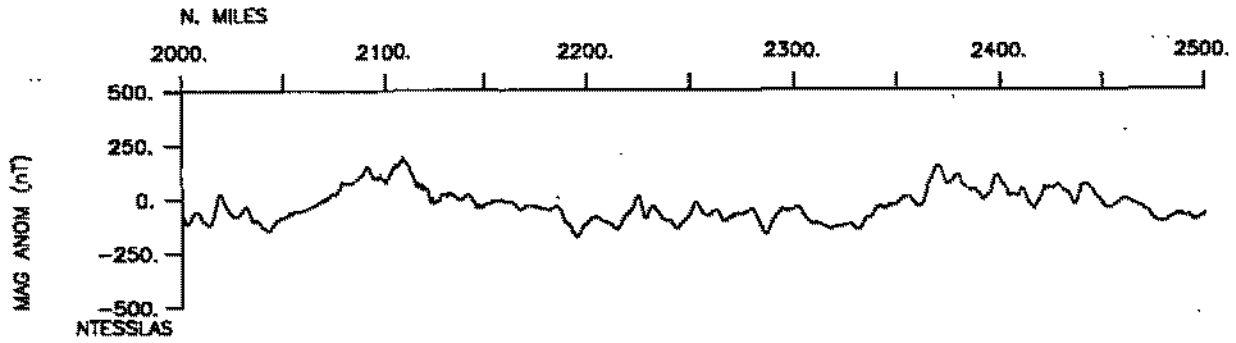
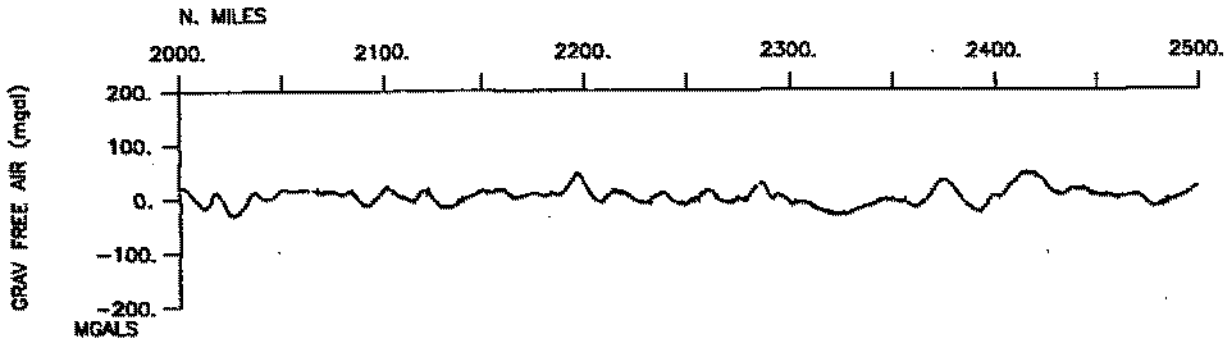


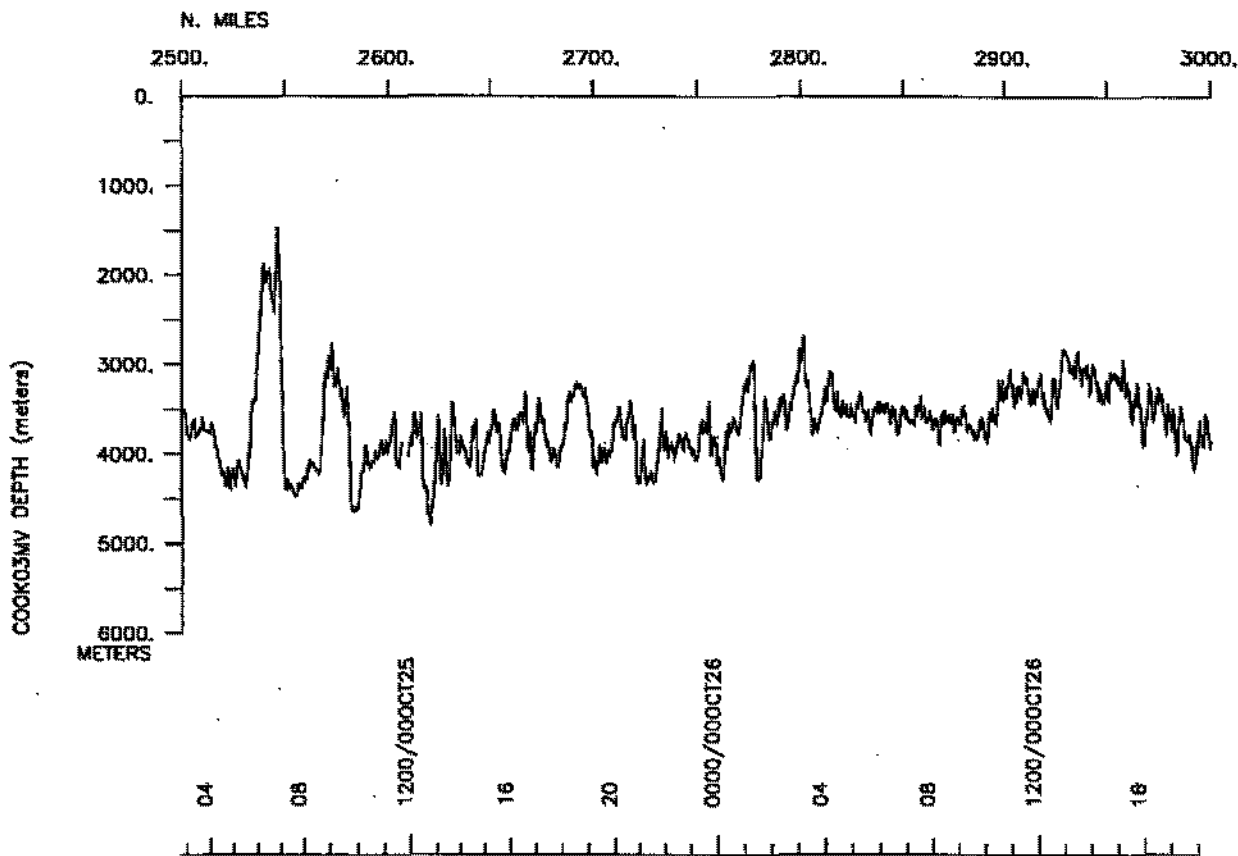
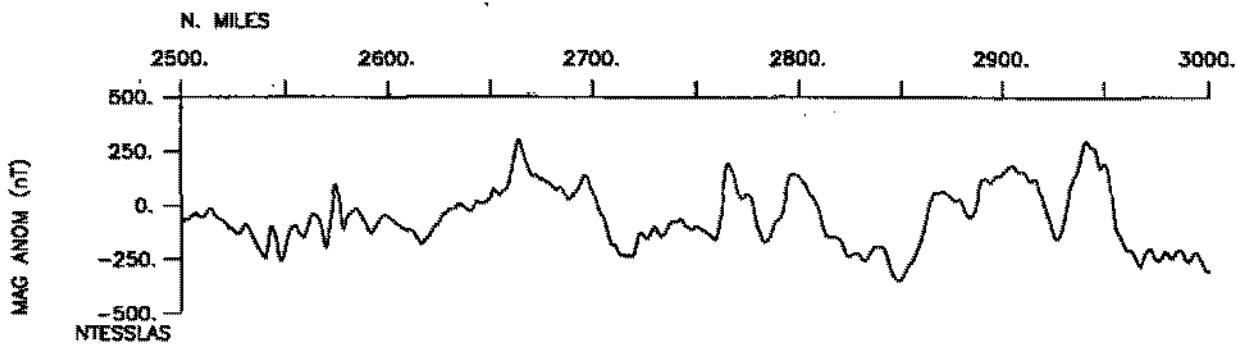
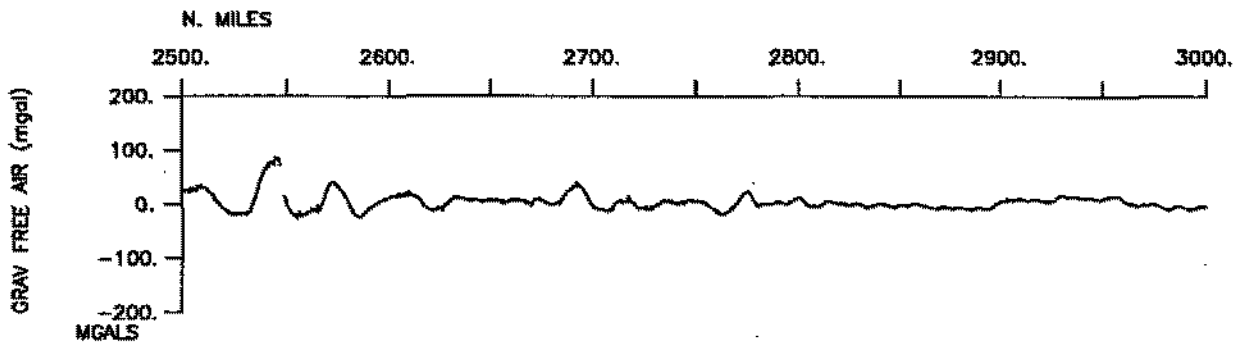


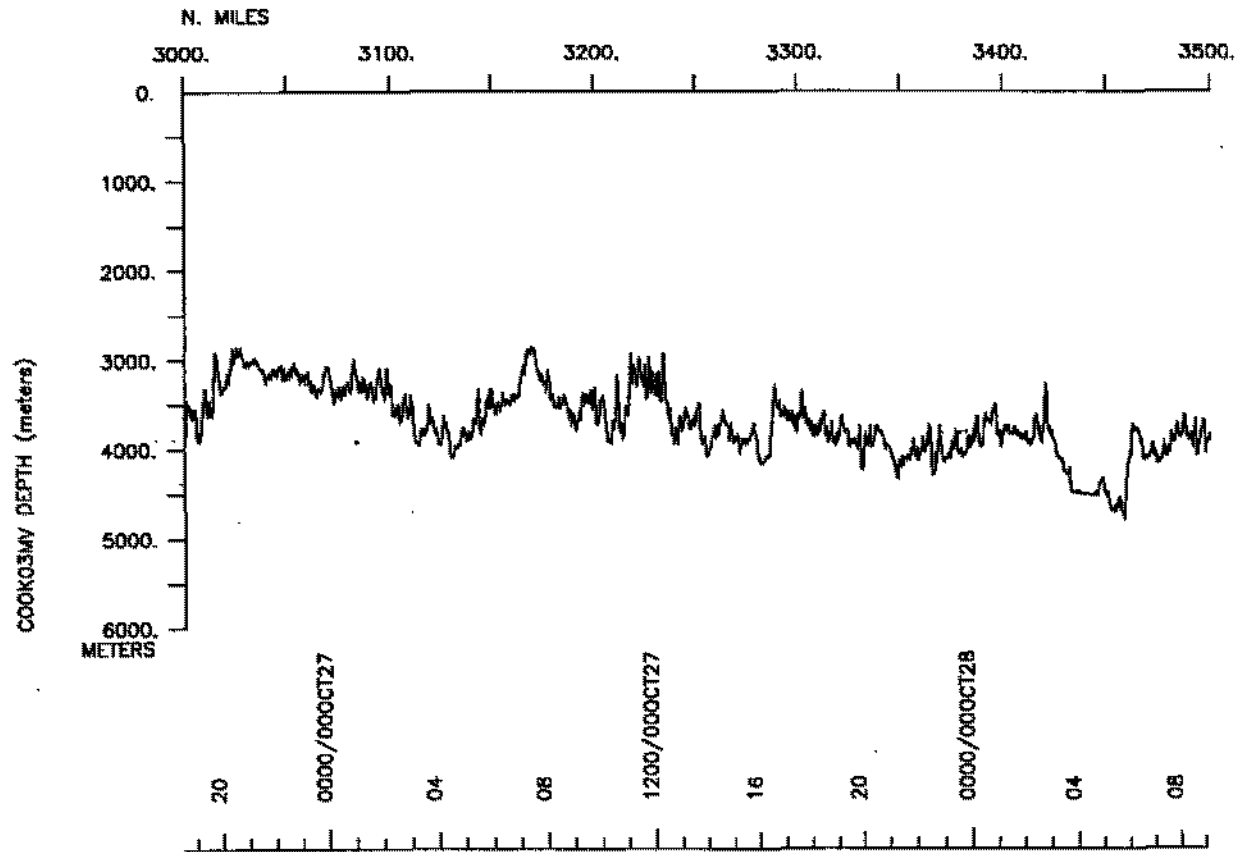
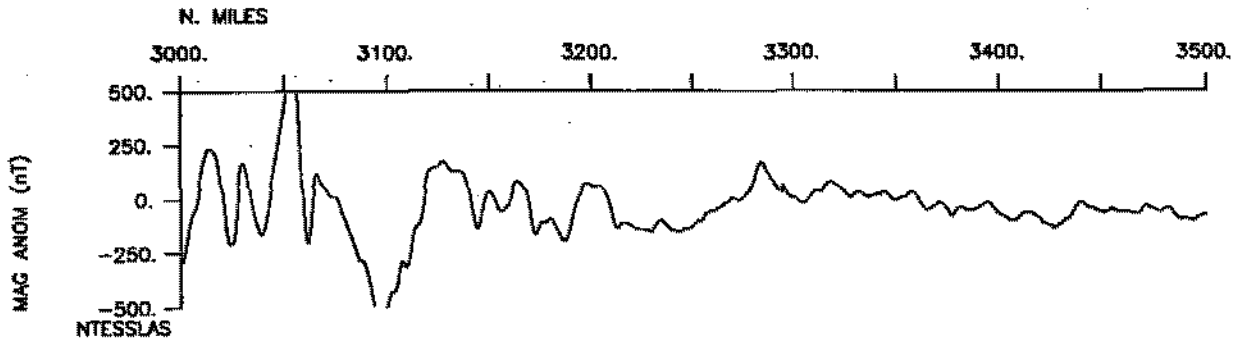
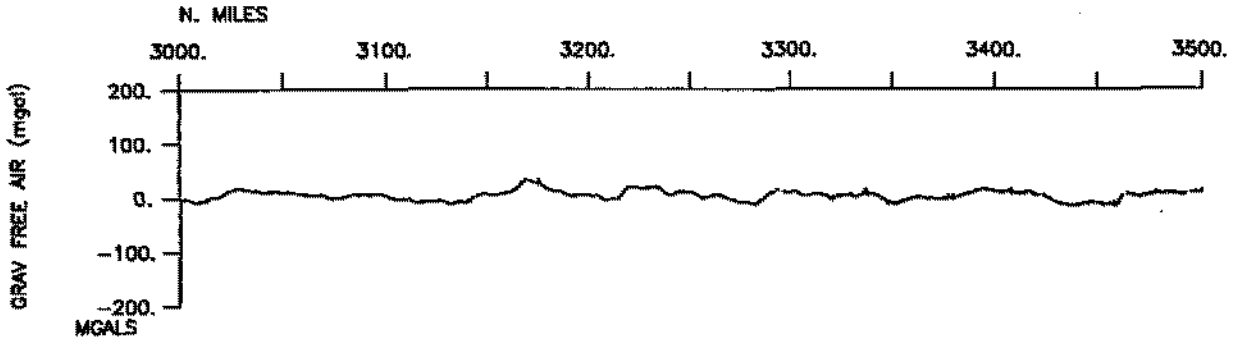


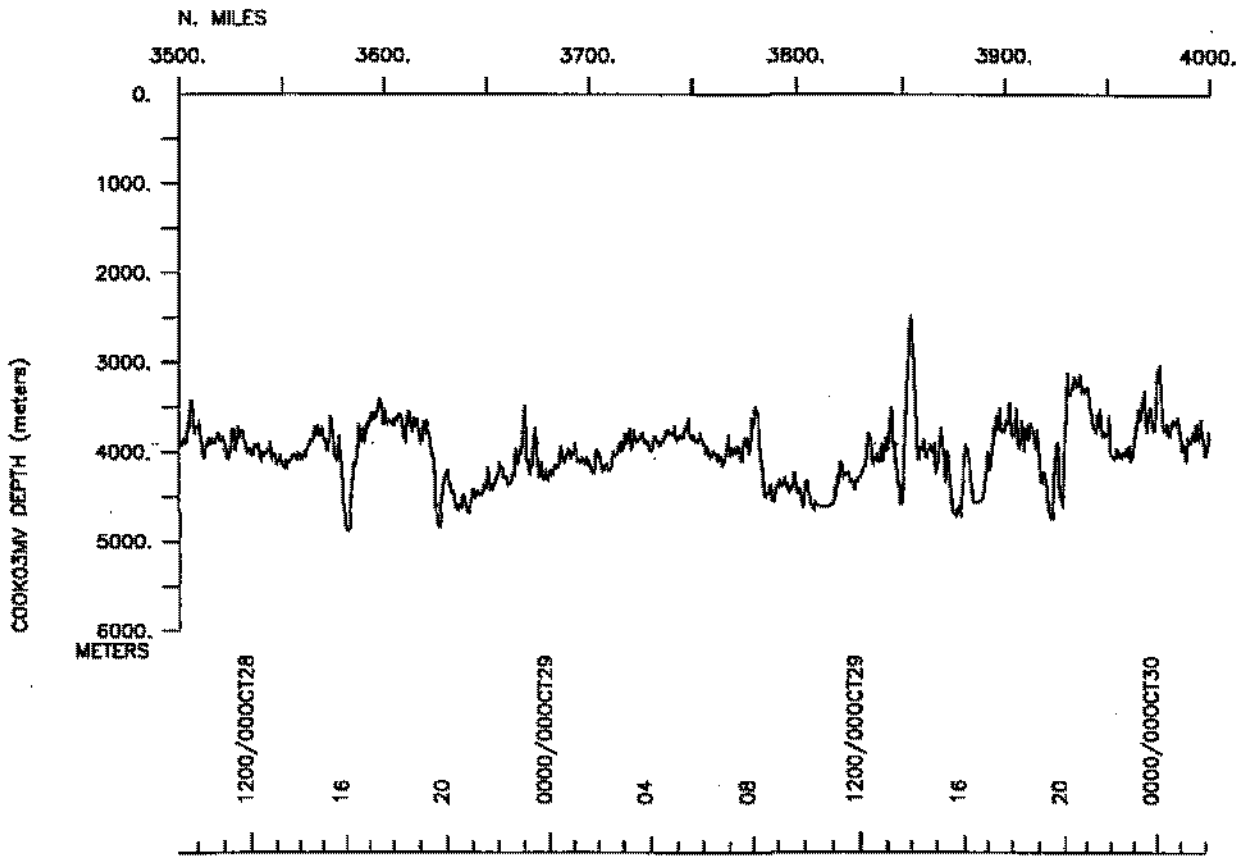
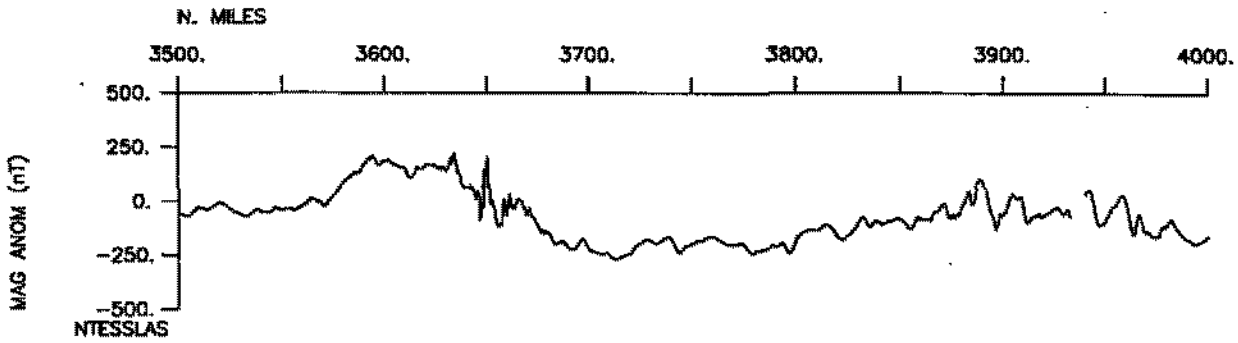
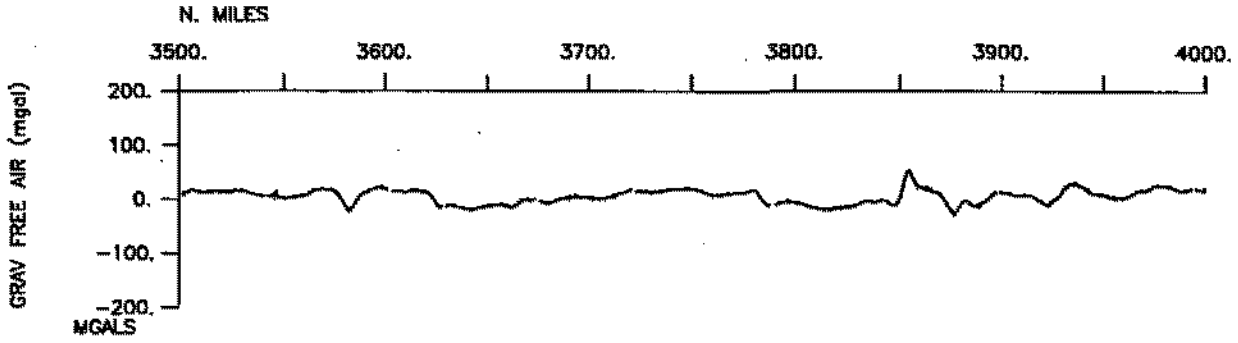


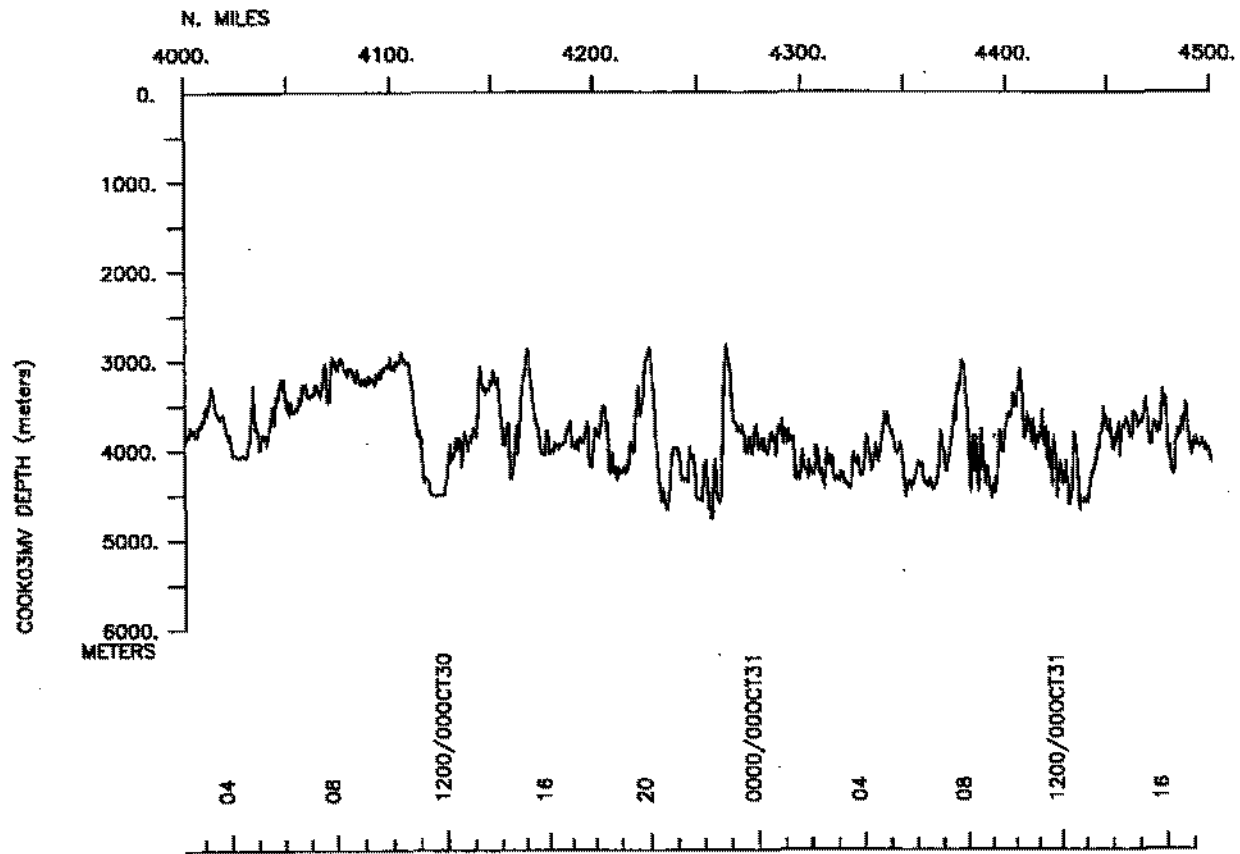
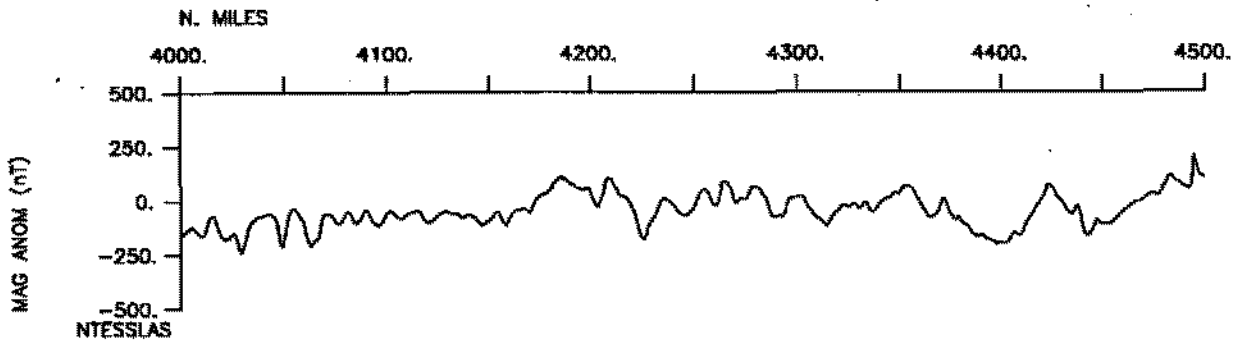
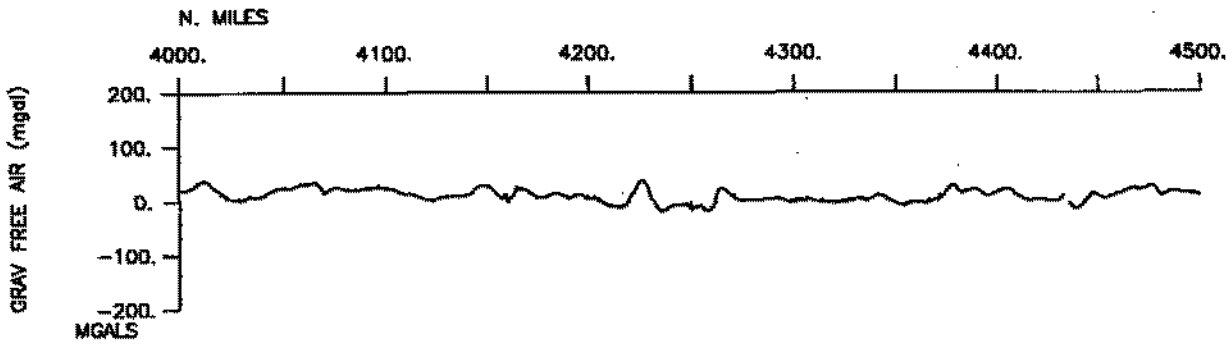


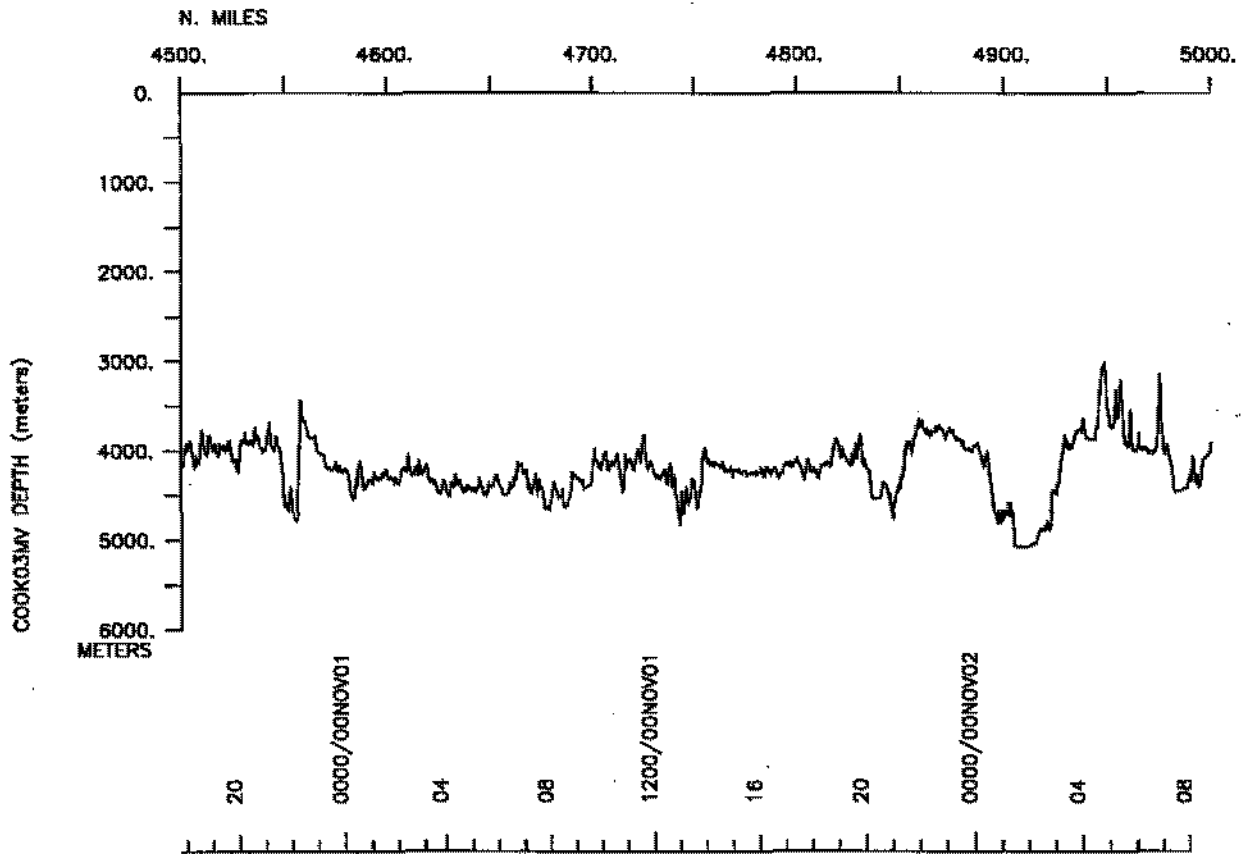
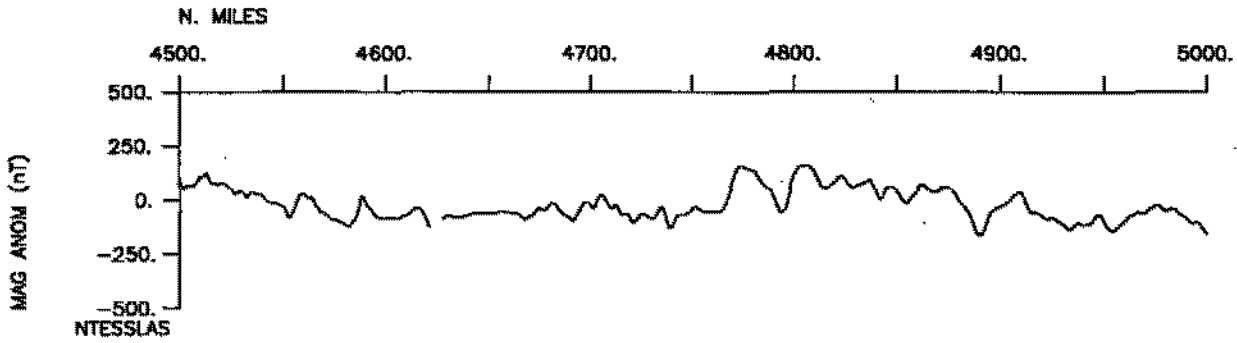
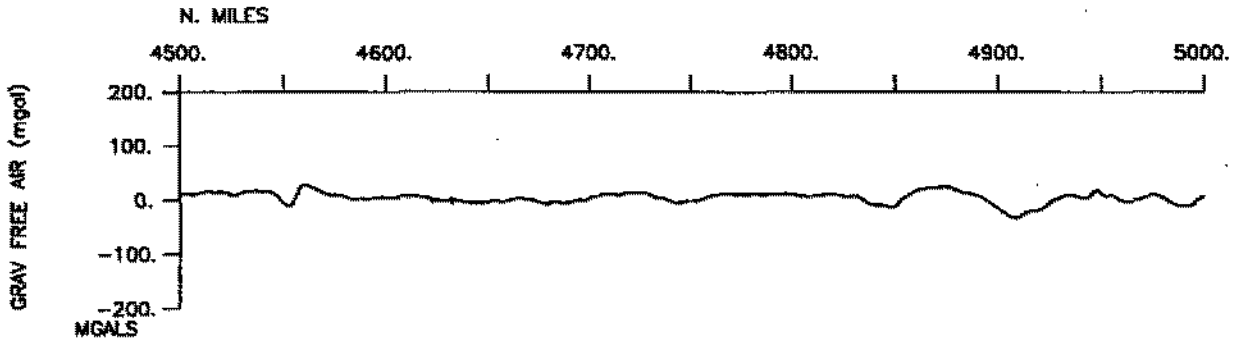


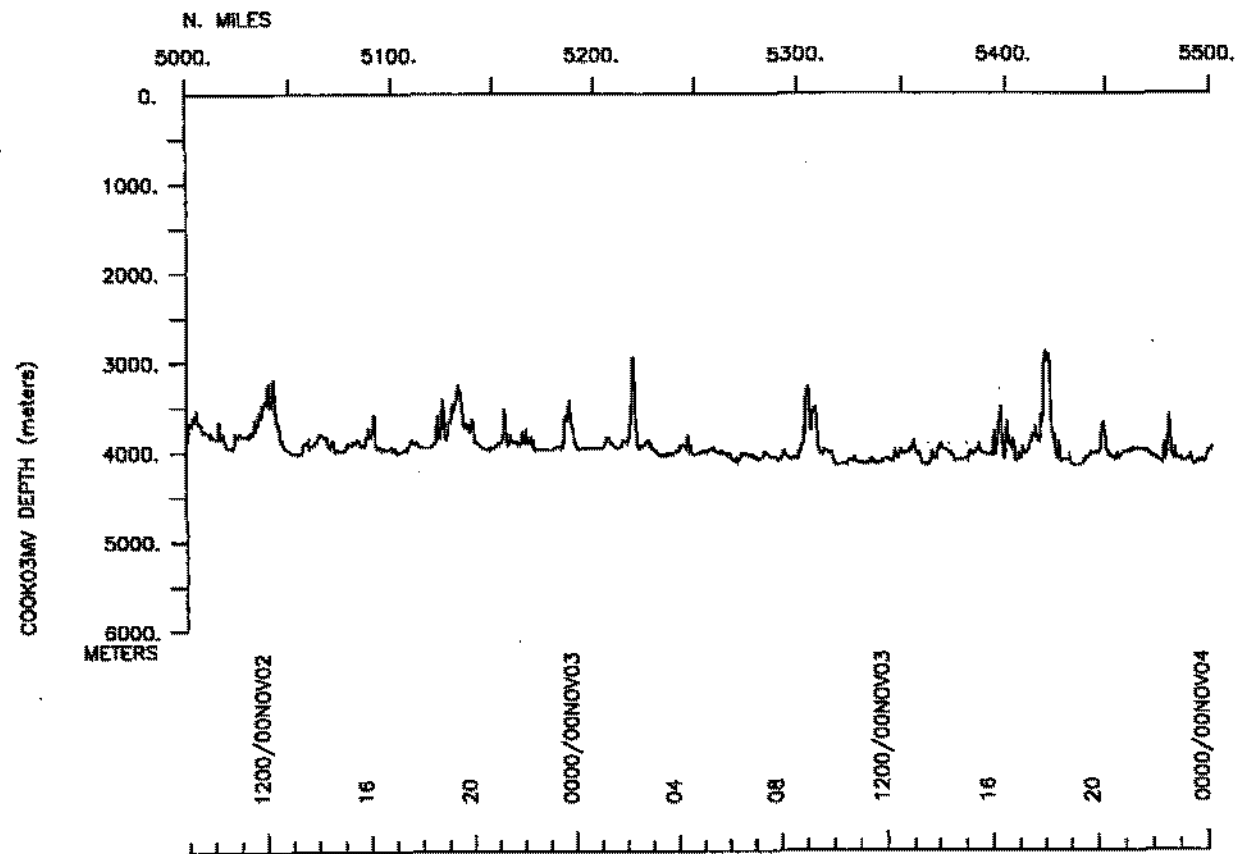
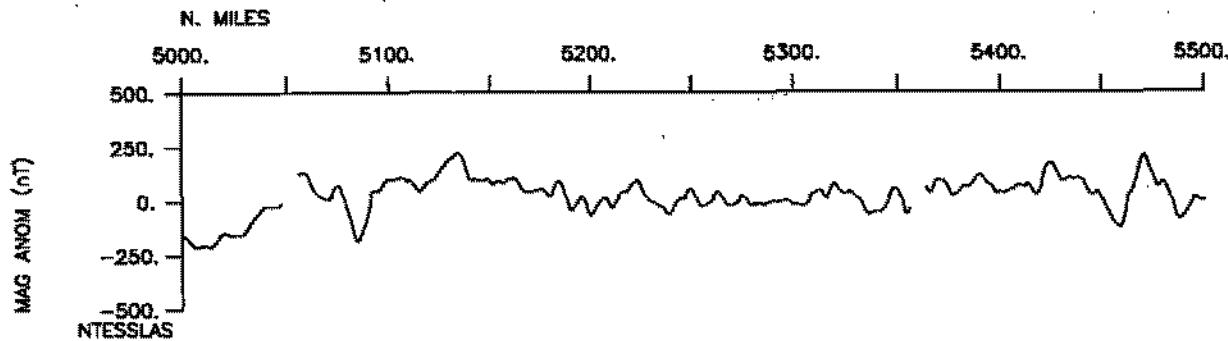
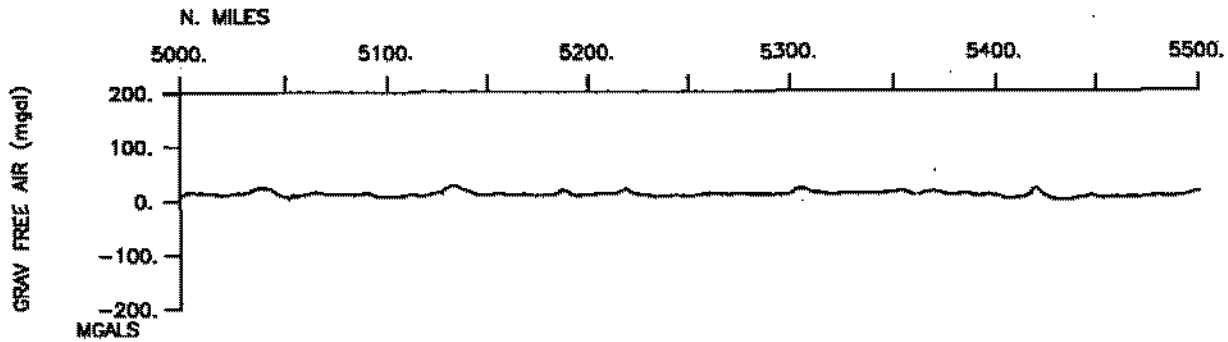


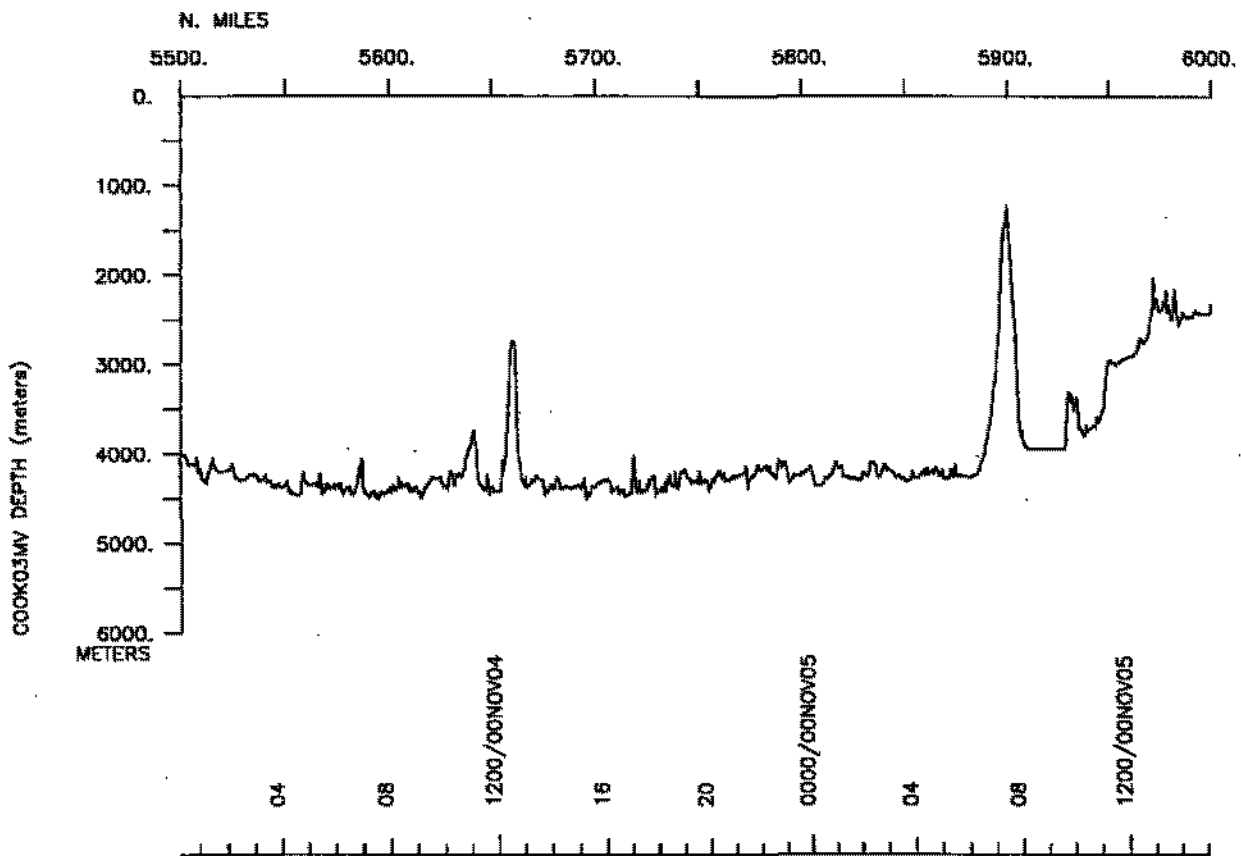
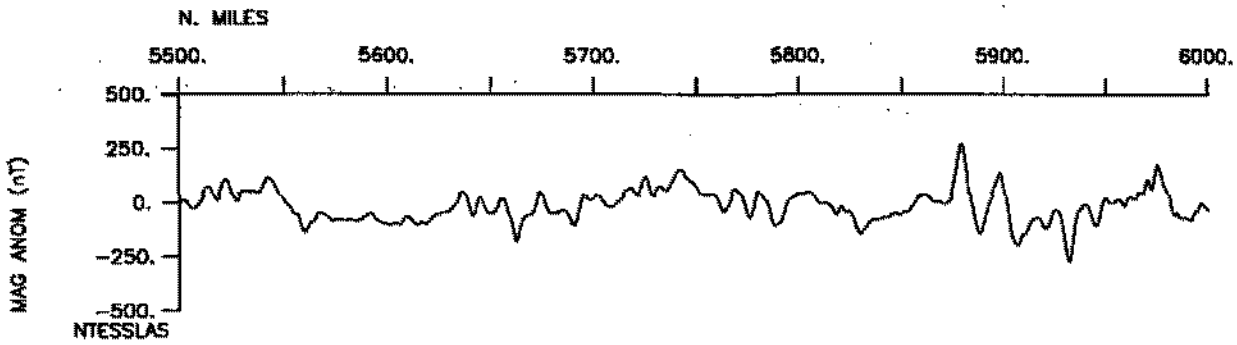
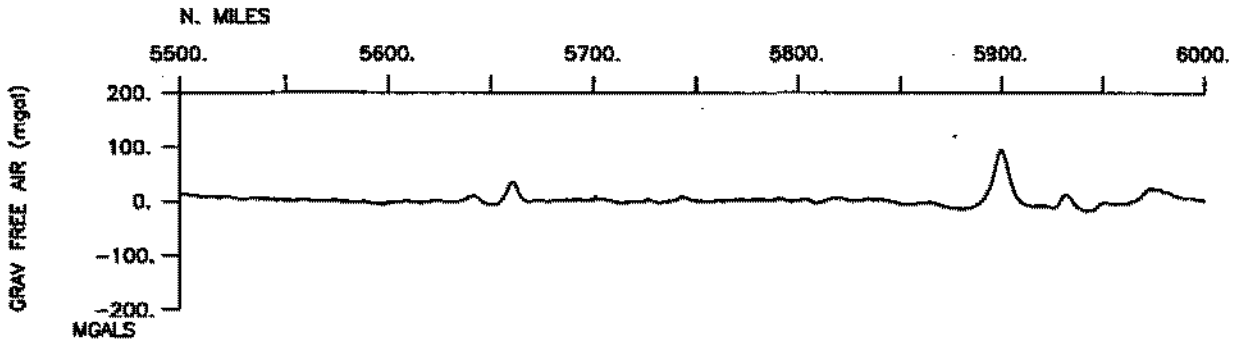


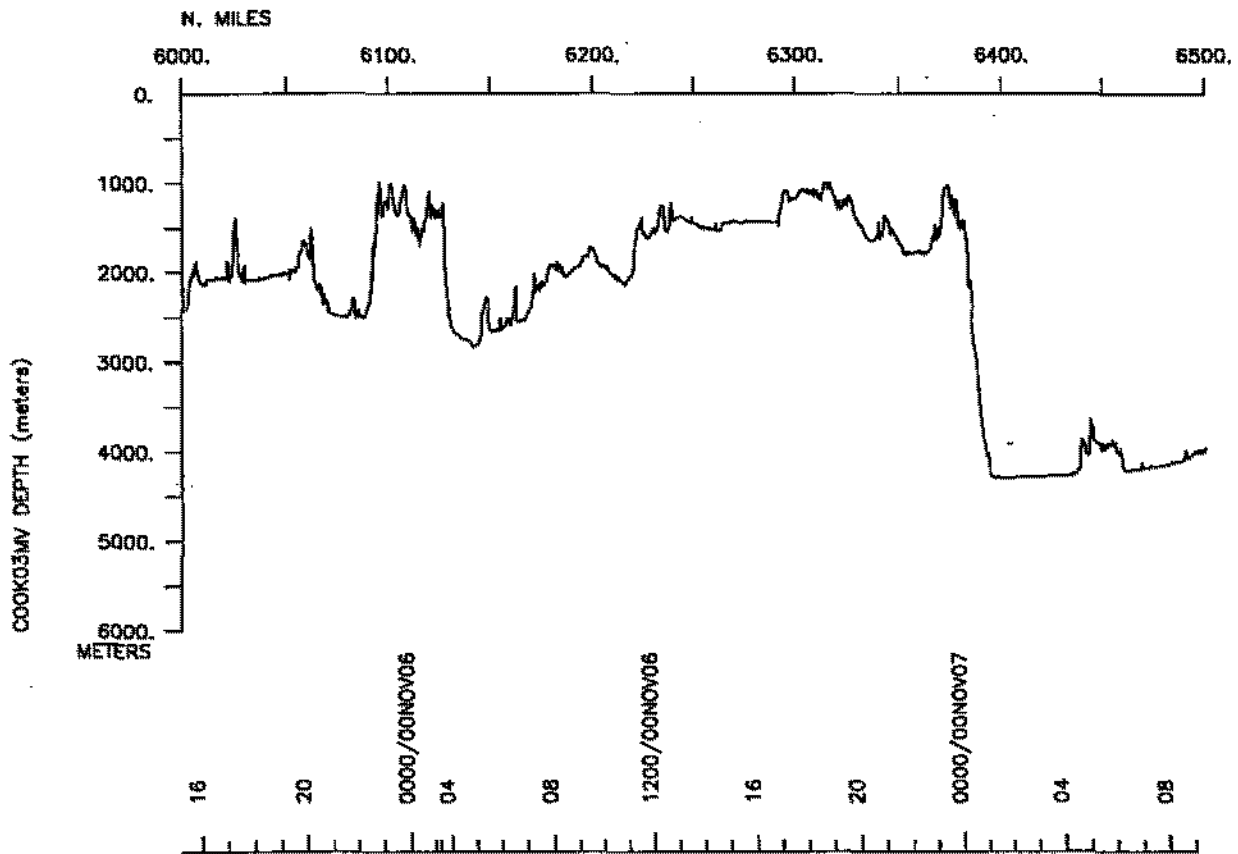
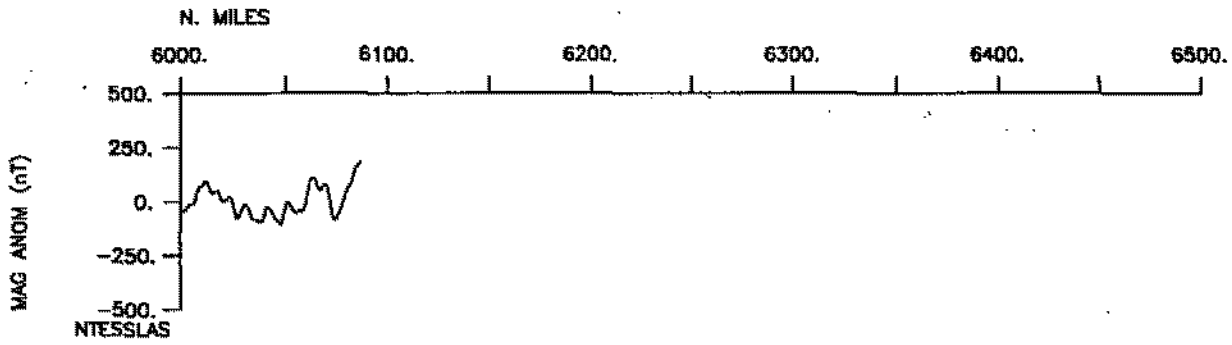
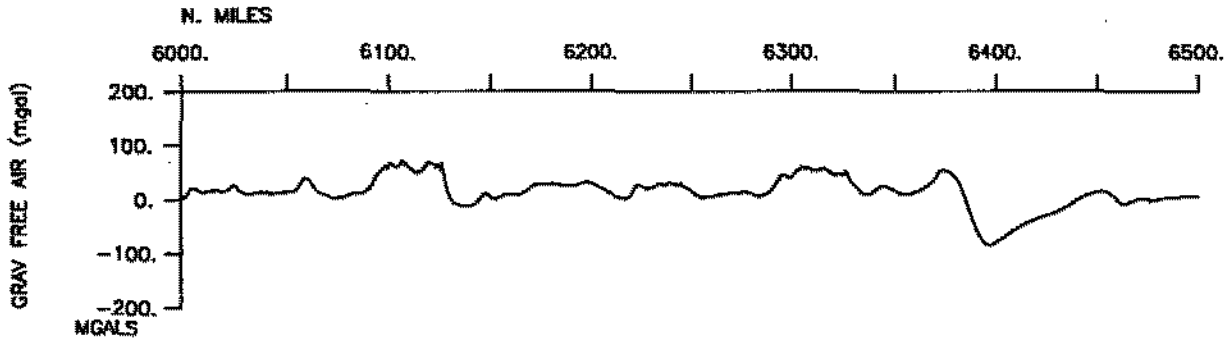


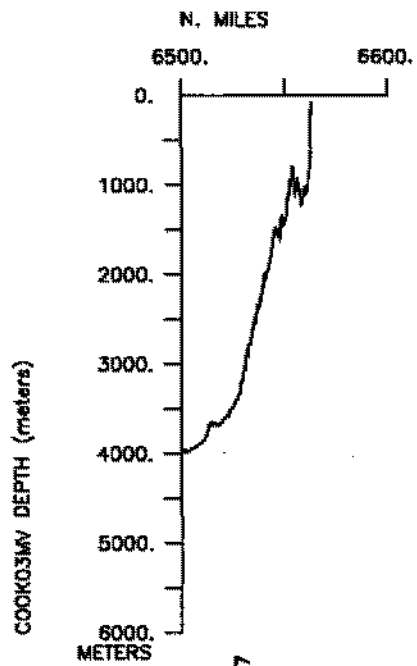
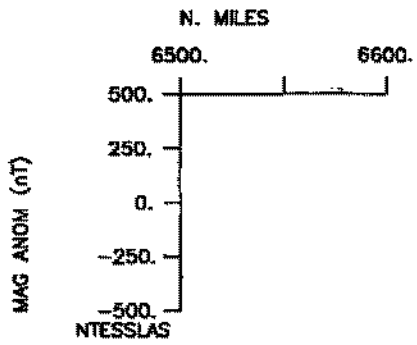
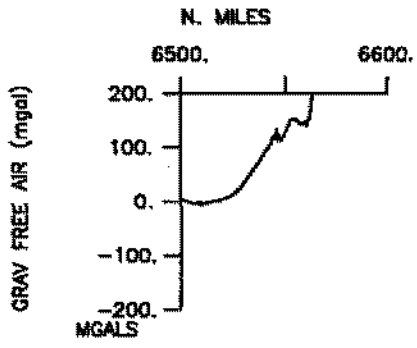












1200/00NOV07
16



S.I.O. Sample Index

Cook Expedition

Leg 3

(COOK03MV)

R/V Melville

(Issued December 2000)

PORTS:

Arica, Chile (16 October 2000)
to
Papeete, Tahiti (7 November 2000)

Chief Scientist:

Barry Eakins,
Scripps Institution of Oceanography

The Sample Index is a first level interdisciplinary listing of time, position, sample identification and disposition of all samples, records and measurements collected on this cruise leg. The index data are encoded at sea by the resident marine technician and processed on shore by the S.I.O. Geological Data Center shortly after the completion of the cruise leg.

Positions are interpolated on the basis of sample time by comparison to a single, edited navigation file. Samples beginning at one time and position and ending at another are entered on two consecutive lines. Disposition and sample type are represented by three and four character codes to permit future computer searches on these parameters. (Listings defining these codes are available from the Geological Data Center.)

GDC Cruise ID# 295

*** Ports ***

1935	161000	0	LGPT	B	Arica, Chile	GDC	18-28.46S	70-19.63W	g	COOK03MV
1801	071100	0	LGPT	E	Papeete, Tahiti	GDC	17-32.30S	149-34.16W	g	COOK03MV

*** Personnel ***

#	*****NAME*****	*****TITLE*****	*****AFFILIATION*****	**CRID**
PECS	GRD Eakins, B.	Chief Scientist	Scripps Institution	COOK03MV
PERT	STS Comer, R.L.	Resident Tech.	Scripps Institution	COOK03MV
PECT	STS Moe, R.	Computer Engineer	Scripps Institution	COOK03MV
PESP	UWA Schacht, K.	Technician	Univ. of Washington	COOK03MV

*** NOTES ***

#An 'X' in the (B)egin/(E)nd column following the sample code indicates no #sample or data recovered. A 'C' indicates continuation of data collection #from before the beginning or after the end of a particular leg, (moored #bottom instruments, for example.) The number appearing in the columns #between the sample identifier and the disposition code, for many sample #entries, is the water depth in corrected meters.

#GMT	DDMMYY	SAMP	B	SAMPLE	DISP				p	CRUISE
#TIME	DATE	TZ	CODE	E IDENTIFIER	CODE	LATITUDE	LONGITUDE		c	LEG-SHIP

*** Underway Data Curator - Geological Data Center ext. 41899 *

*** Log Books ***

1935	161000	0	LEUW	B	Underway watch log	GDC	18-28.46S	70-19.63W	g	COOK03MV
1801	071100	0	LEUW	E	Underway watch log	GDC	17-32.30S	149-34.16W	g	COOK03MV

*** Sea Beam Records (vertical beam and side scan) ***

2001	171000	0	MBSR	B	vbeam&sidescan r-01	GDC	16-37.60S	75-17.84W	g	COOK03MV
0408	261000	0	MBSR	E	vbeam&sidescan r-01	GDC	4-52.81S	102-43.89W	g	COOK03MV
0411	261000	0	MBSR	B	vbeam&sidescan r-02	GDC	4-52.79S	102-44.55W	g	COOK03MV
1740	021100	0	MBSR	E	vbeam&sidescan r-02	GDC	10-57.18S	125-56.98W	g	COOK03MV

*** Echo Sounder Records ***

1942	171000	0	DPR3	B	3.5khz Knudsen r-01	GDC	16-39.05S	75-13.98W	g	COOK03MV
1636	071100	0	DPR3	E	3.5khz Knudsen r-01	GDC	17-27.16S	149-28.28W	g	COOK03MV

*** Magnetics ***

1754	181000	0	MGDR	B	Digital Magnetics	GDC	14-56.50S	79-46.19W	g	COOK03MV
2201	041100	0	MGDR	E	Digital Magnetics	GDC	14-12.52S	136-53.39W	g	COOK03MV

#GMT	DDMMYY	SAMP	B	SAMPLE	DISP				p	CRUISE
#TIME	DATE	TZ	CODE	E IDENTIFIER	CODE	LATITUDE	LONGITUDE		c	LEG-SHIP

**** Digital Gravity ****

1935	161000	0	GVDR	B Digital gravity	GDC	18-28.46S	70-19.63W	g		COOK03MV
1801	071100	0	GVDR	E Digital gravity	GDC	17-32.30S	149-34.16W	g		COOK03MV

**** Integrated Meteorological Data Acquisition ****

1935	161000	0	IMET	B Weather measurements	GDC	18-28.46S	70-19.63W	g		COOK03MV
1801	071100	0	IMET	E Weather measurements	GDC	17-32.30S	149-34.16W	g		COOK03MV

**** Acoustic Doppler Current Profiler ****

1935	161000	0	ADCP	B 300khz Current meas.	GDC	18-28.46S	70-19.63W	g		COOK03MV
1801	071100	0	ADCP	E 300khz Current meas.	GDC	17-32.30S	149-34.16W	g		COOK03MV

**** Oceanographic CTD Floats ****

1933	211000	0	TDXX	Deploy ARGOS 418	UWA	9-08.67S	94-38.09W	g		COOK03MV
2200	221000	0	TDXX	Deploy SOLO 1169	SIO	7-35.88S	99-54.54W	g		COOK03MV
2041	291000	0	TDXX	Deploy ARGOS 408	UWA	7-25.26S	113-00.21W	g		COOK03MV
0330	011100	0	TDXX	Deploy ARGOS 402	UWA	9-10.04S	117-58.52W	g		COOK03MV
1301	021100	0	TDXX	Deploy SOLO 1176	SIO	10-39.99S	124-59.58W	g		COOK03MV
1330	031100	0	TDXX	Deploy ARGOS 421	UWA	12-09.70S	129-59.74W	g		COOK03MV

